



AgEcon SEARCH

RESEARCH IN AGRICULTURAL & APPLIED ECONOMICS

The World's Largest Open Access Agricultural & Applied Economics Digital Library

This document is discoverable and free to researchers across the globe due to the work of AgEcon Search.

Help ensure our sustainability.

Give to AgEcon Search

AgEcon Search

<http://ageconsearch.umn.edu>

aesearch@umn.edu

*Papers downloaded from **AgEcon Search** may be used for non-commercial purposes and personal study only. No other use, including posting to another Internet site, is permitted without permission from the copyright owner (not AgEcon Search), or as allowed under the provisions of Fair Use, U.S. Copyright Act, Title 17 U.S.C.*

No endorsement of AgEcon Search or its fundraising activities by the author(s) of the following work or their employer(s) is intended or implied.

SB 67 (1966)

USDA STATISTICAL BULLETINS

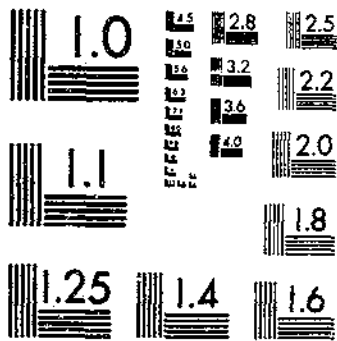
UPDATA

TRANSPORTATION OF GRAIN IN THE SOUTHWESTERN STATES BY RAIL AND TRUCK 1960-2

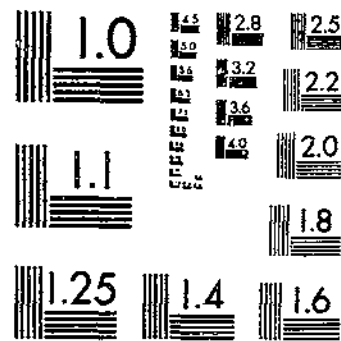
SMITH, H. V.

1 OF 1

START



MICROCOPY RESOLUTION TEST CHART
NATIONAL BUREAU OF STANDARDS-1963-A

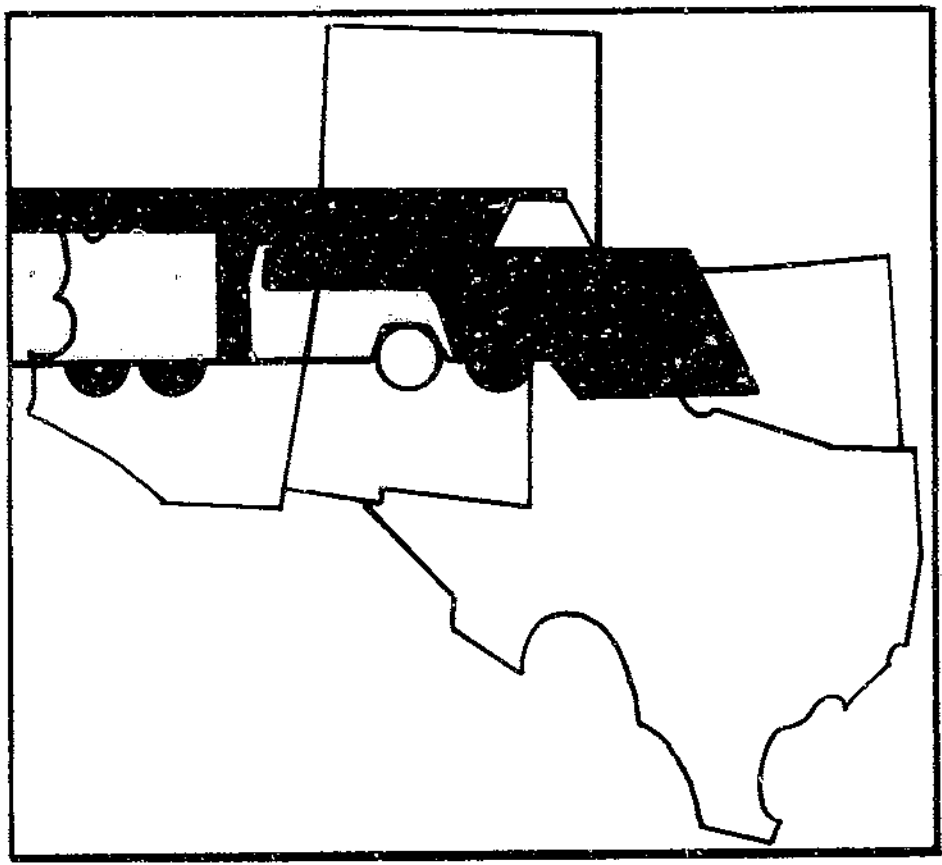
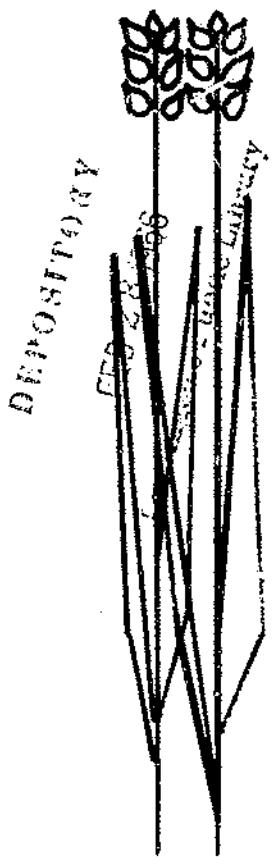


MICROCOPY RESOLUTION TEST CHART
NATIONAL BUREAU OF STANDARDS-1963-A

R.
20.5
53-13
367

REFERENCE
DO NOT LOAN

TRANSPORTATION OF GRAIN IN THE SOUTHWESTERN STATES BY RAIL AND TRUCK 1960-62



U.S. DEPARTMENT OF AGRICULTURE • ECONOMIC RESEARCH SERVICE
STATISTICAL BULLETIN NO. 367

For Sale by the Superintendent of Documents
U. S. Government Printing Office
Washington, D. C. 20402

PREFACE

This report concerns changing patterns in the transporting of grain in the five Southwestern States. It was prepared in response to continued interest expressed by grain producers and processors, operators of country and terminal elevators, and carrier groups and transportation agencies. In particular, the statistics will be useful to various shipper and carrier groups at hearings before the Interstate Commerce Commission.

Volumes moved interstate and intrastate and modes of transport used are given for the years 1960-62 for feed grains and for all grains produced and marketed in the following States: Arizona, Colorado, New Mexico, Oklahoma, and Texas. Marketing channels include country elevators, grain processors, and terminal elevators within the area of the five States. The analyses are based on a summary of primary data obtained by a sample survey collected by Agri Research, Inc., of Manhattan, Kans., under a contract with the U.S. Department of Agriculture.

Tables which provide receipts and shipments of individual grains by class of shipper and mode of transport at country elevators, grain processors, and terminal elevators are available in a supplement to this bulletin.

Related reports issued by the Department of Agriculture are:

Haldeman, Robert C. Grain Transportation in the North Central Region. Mktg. Res. Rpt. 490, 121 pp., July 1961.

Haldeman, Robert C. Grain Transportation Statistics for the North Central Region. Statis. Bul. 268, 131 pp., Aug. 1960.

Corley, Joseph R. An Analysis of Grain Transportation in the Northwest. ERS-200, 49 pp., Dec. 1964.

These publications can be obtained from Division of Information, Office of Management Services, U.S. Department of Agriculture, Washington, D.C. 20250.

CONTENTS

	<u>Page</u>
Introduction	1
The universe sampled	2
The sample	2
Production utilization and storage	4
Country elevators	12
Grain processors	17
Terminal elevators	22

GUIDE TO TABLES

Numbers in sample and universe, by State and type of handler, 1960-62	3
Production of feed grains in the Southwestern States, 1960-62	4
Storage capacity for bulk grain by type of handler, 1962	5
Storage inventory for bulk grain by type of handler, 1962	5
Storage inventory as percentage of capacity by type of handler, 1962	6
Storage capacity and inventory for feed and flour mills, 1962	6
Relative importance of States receiving feed grains and all grains, 1960-62:	
At country elevators	7
At grain processing plants	8
At terminal elevators	9
All grain received by truck, by type of carrier and handler, 1962	10
All grain shipped by truck, by type of carrier and handler, 1962	11
Country elevators:	
Receipts of feed grains and all grains by class of shipper and mode of transport, 1962 ...	13
Shipments of feed grains and all grains from country elevators to various classes of receivers by rail and truck, 1962	14
Interstate and intrastate movements of feed grains and all grains at country elevators by rail and truck, 1960-62	15
Interstate and intrastate shipments of feed grains and all grains from country elevators by rail and truck, 1960-62	16
Grain processors:	
Receipts of feed grains and all grains by class of shipper and mode of transport, 1962 ...	18
Shipments of feed grains and all grains from grain processors to various classes of receivers by rail and truck, 1960-62	19
Interstate and intrastate movements of feed grains and all grains to grain processors by rail and truck, 1960-62	20
Interstate and intrastate shipments of feed grains and all grains from grain processors by rail and truck, 1960-62	21
Terminal elevators:	
Receipts of feed grains and all grains by class of shipper and mode of transport, 1962 ...	23
Shipments of feed grains and all grains from terminal elevators to various classes of receivers by rail and truck, 1962	24
Interstate and intrastate movements of feed grains and all grains to terminal elevators by rail and truck, 1960-62	25
Interstate and intrastate shipments of feed grains and all grains from terminal elevators by rail and truck, 1960-62	26

TRANSPORTATION OF GRAIN IN THE SOUTHWESTERN STATES
BY RAIL AND TRUCK, 1960-62

By Helen V. Smith
Statistical Assistant
Marketing Economics Division
Economic Research Service

INTRODUCTION

The grain marketing system is currently faced with problems of change. Rapid increases in volumes of whole grain from enlarged production areas have resulted in construction of new country and terminal elevators as well as development of additional milling and mixing facilities for flour and feed.

This study of grain transportation patterns in the Southwest has been developed in response to the need of grain producers and marketing firms for information in appraising the markets for grain within this area. It will help both rail and motor carrier lines in presenting cases at Interstate Commerce Commission (ICC) hearings, in which the need for changes in freight rates may be judged by the volume and direction of the movement of grain and by variations in the services offered. The 1958 amendment passed by Congress requires that the ICC "consider the facts and circumstances attending the movement of the traffic by the carrier or carriers to which the rate is applicable." The movement patterns into and out of country elevators, grain processing plants, and terminal elevators are reported as receipts and shipments at each handler location, by State, for feed grains and for all grains. ^{1/}

These data were obtained by a sample survey conducted by interview in Arizona, Colorado, New Mexico, Oklahoma, and Texas, for 1960-62.

Interviews with managers were conducted at 321 country elevators, 93 feed mills, 10 flour mills, and 44 terminal and subterminal elevators in the 5 States. Information was obtained for 1960, 1961, and 1962 for major volume movements; and, in more detail for 1962 only.

Total volume of receipts and shipments was expanded to represent the entire grain movements for the Southwest. Use of selected categories of handlers provided coverage of practically all the grain transported into, within, and out of the Southwest.

The grain handlers in this study control all grain moving through the marketing channels, except that owned by the Commodity Credit Corporation (CCC). The CCC grain is handled and stored by grain handlers through contract under the Uniform Grain Storage Agreement. The USDA Agricultural Stabilization and Conservation Service controls the Government-owned grain and transportation decisions concerning it.

^{1/} For those desiring similar statistics for corn, oats, barley, grain sorghums, wheat, and soybeans, a supplement to this publication is available.

THE UNIVERSE SAMPLED

The universe of grain handlers sampled was defined as all active country elevators, feed mills, flour mills, and terminal and subterminal elevators in Texas, Oklahoma, New Mexico, Arizona, and Colorado. A master list of such handlers was assembled from the most up-to-date directories of warehouses approved by the Agricultural Stabilization and Conservation Service, USDA, and of State grain and feed associations; from listings by State agricultural experiment stations and extension workers in grain marketing, from State feed control agencies, and from directories published by grain trade magazines.

THE SAMPLE

A separate sample list of grain handlers was drawn for three categories of handlers in each of the five States. Random sampling was insured by numbering the handlers consecutively within each list and selecting the sample with a table of random numbers.

The expansion factors used to obtain the volume estimates for the universe in each State are shown in table 1. These factors were computed by multiplying the ratio of the number of handlers in the universe to the number in the sample by a ratio estimator of 0.9009. The ratio estimator is based on a comparison of the handlers' wheat receipts from farmers and wheat production in the States. The application of the ratio estimator brings the expanded total wheat receipts from farmers for 1962 into line with the average wheat production in the States for crop years 1961 and 1962, the wheat receipts for 1961 into line with the average production for crop years 1960 and 1961, and the wheat receipts for 1960 into line with the average production for the crop years 1959 and 1960. The ratio estimator was necessary because large handlers were sampled at a higher rate than small handlers, and consequently the sample represented a larger percentage of the handling volume for the universe than that indicated by the ratio of the number in the sample to the number in the universe. The expansion factors shown in table 1 were applied to the volumes reported for each category of handler in order to obtain estimates representative of all handlers in the States.

Table 1.--Numbers in sample and universe and expansion factor, by State and type of handler, 1960-62

State and type of handler	Number of useable schedules	Number in universe (adjusted)	Ratio of number in universe to number in sample	Expansion factor after application of ratio estimator $\frac{1}{}$
	<u>Number</u>	<u>Number</u>	<u>Percent</u>	<u>Number</u>
Country elevators:				
Arizona	7	23	3.286	2.960
Colorado	52	238	4.577	4.123
New Mexico	6	30	5.000	4.505
Oklahoma	81	394	4.864	4.382
Texas	175	854	4.880	4.396
Total	321	1,539	---	---
Grain processors:				
Arizona	8	14	1.750	1.577
Colorado	20	110	5.500	4.955
New Mexico	9	45	5.000	4.505
Oklahoma	31	141	4.548	4.097
Texas	35	172	4.914	4.427
Total	103	482	---	---
Terminal elevators:				
Arizona	---	---	---	---
Colorado	2	4	2.000	1.802
New Mexico	---	---	---	---
Oklahoma	7	18	2.571	2.316
Texas	35	160	4.571	4.118
Total	44	182	---	---

$\frac{1}{}$ Ratio estimator of 0.9009 was obtained by comparing the estimated total receipts from farmers with wheat production for the areas.

PRODUCTION, UTILIZATION, AND STORAGE

Large volumes of feed grains are produced in Arizona, Colorado, New Mexico, Oklahoma, and Texas. Much of this volume is transported to Texas gulf ports for export and to southern California for livestock feeding.

Motortrucks and railroads compete for these long hauls as well as for shorter movements into, within, and out of these States.

Production of corn, oats, barley, and sorghum grain decreased 21 percent in the five States from 1960 to 1962 (table 2). The decrease in each of the States ranged from 16 to 35 percent, with the exception of New Mexico, which increased in production about 5 percent for the same period.

Table 2.--Production of feed grains in the Southwestern States, 1960-62 ^{1/}

Crop year	Arizona	Colorado	New Mexico	Oklahoma	Texas	Total
	1,000 bushels	1,000 bushels	1,000 bushels	1,000 bushels	1,000 bushels	1,000 bushels
1960	17,310	44,925	12,031	59,560	320,084	453,910
1961	19,455	44,100	12,328	55,342	300,627	431,852
1962	14,600	37,810	12,667	38,666	253,409	357,152

^{1/} Corn, oats, barley, and sorghum grain.

SOURCE: 1960 - Crop Reporting Board, Statistical Research Service. Crop Production, 1961 Annual Summary. U.S. Dept. Agr., Cr Pr 2-1 (61), L. 15, 1961.

1961 - Crop Reporting Board, Statistical Research Service. Crop Production, 1962 Annual Summary. U.S. Dept. Agr., Cr Pr 2-1 (62), Dec. 18, 1962.

1962 - Crop Reporting Board, Statistical Research Service. Crop Production, 1963 Annual Summary. U.S. Dept. Agr., Cr Pr 2-1 (63), Dec. 18, 1963.

Storage capacity of bulk grain was greatest at country elevators in each of the States in 1962 (table 3). Texas and Oklahoma had 71 and 20 percent, respectively, of total country elevator capacity. Terminal elevators ranked second in total storage capacity, and grain processors were third. Texas and Oklahoma were again the largest handlers.

The majority of the terminal elevators were clustered around the following concentration points for grain: Denver, Colo.; Enid, and Oklahoma City, Okla.; Amarillo, Lubbock, and Wichita Falls, Tex.

The greatest concentration of grain processors was in Texas and Oklahoma.

Table 3.--Storage capacity for bulk grain by type of handler
in the Southwest, 1962

State	Country elevators	Grain processors <u>1/</u>	Terminal elevators	Total capacity all handlers
	1,000 bushels	1,000 bushels	1,000 bushels	1,000 bushels
Arizona	6,813	3,395	---	10,208
Colorado	47,306	8,816	5,766	61,888
New Mexico	3,396	4,573	---	7,969
Oklahoma	116,342	43,317	165,480	325,139
Texas	416,900	45,439	614,226	1,076,565
Total	590,757	105,540	785,472	1,481,769

1/ Feed and flour mills.

Storage inventory or stocks of bulk grain by type of handler in 1962 was greatest at the terminal elevators (table 4). Texas and Oklahoma had 88 and 11 percent, respectively, of the total terminal elevator inventory. Country elevators ranked second in their inventory or stocking of grains, utilizing 41 percent of capacity for all handlers. Again Texas, Oklahoma, and Colorado had percentages of 74, 17, and 8, respectively.

Table 4.--Storage inventory for bulk grain by type of handler
in the Southwest, 1962

State	Country elevators	Grain processors <u>1/</u>	Terminal elevators	Total inventory all handlers
	1,000 bushels	1,000 bushels	1,000 bushels	1,000 bushels
Arizona	4,146	1,805	---	5,951
Colorado	25,085	3,227	4,010	32,322
New Mexico	2,067	1,324	---	3,391
Oklahoma	55,359	20,107	48,738	124,204
Texas	241,167	26,244	373,180	640,591
Total	327,824	52,707	425,928	806,459

1/ Feed and flour mills.

The storage inventory as a percentage of storage capacity is shown in table 5. Arizona, New Mexico, and Texas had the highest percentage utilization at country elevators. Texas, Arizona, and Oklahoma were highest at grain processor plants, and Colorado and Texas were highest at the terminal elevators.

Table 5.--Storage inventory as percentage of storage capacity by type of handler in the Southwest, 1962

State	Country elevators	Grain processors ^{1/}	Terminal elevators	Total handlers
	Percent	Percent	Percent	Percent
Arizona	60.9	53.2	---	58.3
Colorado	53.0	36.6	69.5	52.2
New Mexico	60.9	29.0	---	42.6
Oklahoma	47.6	46.4	29.5	38.2
Texas	57.8	57.8	60.8	59.5
Total	55.5	49.9	54.2	54.4

^{1/} Feed and flour mills.

Storage capacity and inventory for feed and flour mills in 1962 are shown in table 6. The storage capacity utilized by the feed mills ranged from 28 percent in Arizona to 59 percent in Texas. The storage capacity utilized by the flour mills ranged from 13 percent in Colorado to 77 percent in Arizona.

Table 6.--Storage capacity and average storage inventory for feed and flour mills located in the Southwest, 1962

State	Feed mills ^{1/}			Flour mills ^{1/}		
	Storage capacity	Storage inventory	Percent utilized	Storage capacity	Storage inventory	Percent utilized
	1,000 bushels	1,000 bushels	Percent	1,000 bushels	1,000 bushels	Percent
Arizona	1,638	454	27.7	1,757	1,351	76.9
Colorado	8,141	3,137	38.5	675	90	13.3
New Mexico	4,518	1,306	28.9	55	18	32.7
Oklahoma	26,140	9,957	38.1	17,177	10,150	59.1
Texas	25,264	14,814	58.6	20,175	11,430	56.7
Total	65,701	29,668	45.2	39,839	23,039	57.8

^{1/} Grain processors.

Tables 7, 8, and 9 show the relative importance of States receiving feed grains and all grains at country elevators, grain processing plants, and terminal elevators for 1960-62.

Table 7.--Relative importance of States receiving feed grains and all grains at country elevators, 1960-62

Year and State	Feed grains <u>1/</u>		All grains <u>2/</u>	
	1,000 bushels	Percent	1,000 bushels	Percent
1960:				
Arizona	21,870	7.0	23,083	4.3
Colorado	36,746	11.8	80,122	15.0
New Mexico	10,379	3.3	17,811	3.3
Oklahoma	23,769	7.6	120,956	22.6
Texas	219,561	70.3	292,610	54.8
Total	312,325	100.0	534,582	100.0
1961:				
Arizona	22,069	7.2	23,078	4.1
Colorado	38,405	12.4	83,735	15.0
New Mexico	11,176	3.6	22,134	4.0
Oklahoma	28,596	9.3	127,837	22.9
Texas	208,413	67.5	300,938	54.0
Total	308,659	100.0	557,722	100.0
1962:				
Arizona	26,494	8.7	27,334	5.5
Colorado	41,674	13.7	89,006	18.0
New Mexico	11,269	3.7	20,413	4.2
Oklahoma	20,173	6.6	93,841	19.0
Texas	205,302	67.3	262,709	53.3
Total	304,912	100.0	493,303	100.0

1/ Corn, oats, barley, and grain sorghums.

2/ Feed grains plus wheat and soybeans.

Table 8.--Relative importance of States receiving feed grains and all grains at grain processing plants, 1960-62

Year and State	Feed grains <u>1/</u>		All grains <u>2/</u>	
	<u>1,000 bushels</u>	<u>Percent</u>	<u>1,000 bushels</u>	<u>Percent</u>
1960:				
Arizona	5,029	3.2	6,009	1.9
Colorado	50,703	32.2	54,227	16.8
New Mexico	3,217	2.0	3,843	1.1
Oklahoma	31,193	19.8	105,089	32.5
Texas	67,529	42.8	154,503	47.7
Total	157,671	100.0	323,671	100.0
1961:				
Arizona	5,794	3.8	6,715	2.1
Colorado	51,168	33.4	54,727	17.3
New Mexico	4,363	2.8	4,431	1.4
Oklahoma	30,071	19.6	102,296	32.3
Texas	61,852	40.4	148,575	46.9
Total	153,247	100.0	316,744	100.0
1962:				
Arizona	5,407	2.9	6,348	1.8
Colorado	48,081	25.8	51,468	15.1
New Mexico	9,128	4.9	9,802	2.9
Oklahoma	35,255	19.0	100,170	29.5
Texas	88,041	47.4	172,255	50.7
Total	185,912	100.0	340,043	100.0

1/ Corn, oats, barley, and grain sorghums.

2/ Feed grains plus wheat and soybeans.

Table 9.--Relative importance of States receiving feed grains and all grains at terminal elevators, 1960-62

Year and State	Feed grains <u>1/</u>		All grains <u>2/</u>	
	<u>1,000 bushels</u>	<u>Percent</u>	<u>1,000 bushels</u>	<u>Percent</u>
1960:				
Arizona	---	---	---	---
Colorado	7,248	1.2	25,964	1.7
New Mexico	---	---	---	---
Oklahoma	6,393	1.1	157,739	10.5
Texas	1/589,481	97.7	1/1,322,227	87.8
Total	1/603,122	100.0	1/1,505,930	100.0
1961:				
Arizona	---	---	---	---
Colorado	4,112	1.1	19,101	1.7
New Mexico	---	---	---	---
Oklahoma	12,865	3.5	139,541	12.8
Texas	1/351,886	95.4	1/933,519	85.5
Total	1/368,863	100.0	1/1,092,161	100.0
1962:				
Arizona	---	---	---	---
Colorado	4,113	3.4	58,613	6.8
New Mexico	---	---	---	---
Oklahoma	10,196	95.3	40,497	4.6
Texas	1/292,256	1.3	1/767,903	88.6
Total	1/306,565	100.0	867,013	100.0

1/ Includes unspecified quantities of rye and other small grains.

2/ Feed grains plus wheat and soybeans.

Operations of Truckers Hauling Grain

Forty-one percent of the receipts of all grains at handler locations in 1962 were from terminal elevators, and 70 percent of these receipts were from Texas (table 10).

Fifty-three percent of all grain transported by truckers in 1962 was to country elevators (table 10). Eighty-eight percent of this amount was delivered in farmer-owned trucks. Twenty-eight percent of the amount received by truck at grain processors was delivered in processor-owned trucks, and 25 percent was delivered by itinerant truckers. Seventy-three percent of the grain received by truck at terminal elevators was delivered in common and contract carriers.

Table 10.--All grain received by truck, by type of carrier and handler, Southwestern States, 1962

State	Type of carrier						Total truck receipts
	Owned	Common and contract	Farmer's own	Itinerant	Exempt for hire	Other handler's trucks	
	1,000 bushels	1,000 bushels	1,000 bushels	1,000 bushels	1,000 bushels	1,000 bushels	1,000 bushels
<u>Country elevators</u>							
Arizona	3,184	710	5,471	1,154	4,740	---	15,259
Colorado	5,518	2,452	57,550	20,978	---	---	86,498
New Mexico ...	---	---	20,407	6	---	---	20,413
Oklahoma	476	1,529	84,995	2,576	---	88	89,664
Texas	8,344	1,512	240,912	868	---	2,174	253,810
Total	17,522	6,203	409,335	25,582	4,740	2,262	465,644
<u>Grain processors</u>							
Arizona	197	209	3,165	467	1,105	164	5,307
Colorado	22,956	1,304	8,807	11,064	382	1,799	46,312
New Mexico ...	651	1,074	7,379	624	---	72	9,800
Oklahoma	1,671	14,669	7,464	24,109	---	273	48,186
Texas	27,075	21,305	8,606	9,887	---	10,732	77,605
Total	52,550	38,561	35,421	46,151	1,487	13,040	187,210
<u>Terminal elevators</u>							
Arizona	---	---	---	---	---	---	---
Colorado	---	2,412	364	54	---	---	2,830
New Mexico ...	---	---	---	---	---	---	---
Oklahoma	1,446	---	2,722	642	74	---	4,884
Texas	7,476	166,491	21,138	6,655	18,039	2,886	222,685
Total	8,922	168,903	24,224	7,351	18,113	2,886	230,399
All handlers ..	78,994	213,667	468,980	79,084	24,340	18,188	883,253

Seventy percent of all grain shipped by truck in 1962 left country elevators (table 11). Of this amount, 35 percent was hauled by common and contract carriers. About 43 percent of the truck shipments from grain processors were in farmer-owned trucks. Seventy-eight percent of the amount shipped from terminal elevators was hauled by common and contract carriers.

Shipments of all grains from all types of handlers to all classes of receivers in 1962 show that 67 percent were to terminal elevators and 52 percent of the shipments were from Texas (table 11).

Table 11.--All grain shipped by truck, by type of carrier and handler,
Southwestern States, 1962

State	Type of carrier						Total truck shipments
	Owned	Common and contract	Farmer's own	Itinerant	Exempt for hire	Other handler's trucks	
	1,000	1,000	1,000	1,000	1,000	1,000	1,000
	<u>bushels</u>	<u>bushels</u>	<u>bushels</u>	<u>bushels</u>	<u>bushels</u>	<u>bushels</u>	<u>bushels</u>
	<u>Country elevators</u>						
Arizona	345	1,395	904	---	11,772	118	14,534
Colorado	15,316	11,815	19,473	16,193	---	---	1/63,431
New Mexico ...	2,348	7,945	1,477	1,126	136	1,145	14,177
Oklahoma	2,555	21,511	11,280	3,045	1,238	3,389	43,018
Texas	25,990	40,009	6,975	6,685	15,994	4,824	100,477
Total	46,554	82,675	40,109	27,049	29,140	9,476	1/235,637
	<u>Grain processors</u>						
Arizona	---	129	---	---	---	---	129
Colorado	745	1,756	1,431	---	2,910	63	6,905
New Mexico ...	92	---	---	225	---	---	317
Oklahoma	2,734	1,064	985	716	---	17	5,516
Texas	2,310	---	7,123	---	32	70	9,535
Total	5,881	2,949	9,539	941	2,942	150	22,402
	<u>Terminal elevators</u>						
Arizona	---	---	---	---	---	---	---
Colorado	---	855	---	---	---	---	855
New Mexico ...	---	---	---	---	---	---	---
Oklahoma	631	56,275	332	667	---	2,819	60,724
Texas	1,664	5,929	500	4,102	4,415	2,542	19,152
Total	2,295	63,059	832	4,769	4,415	5,361	80,731
All handlers ..	54,730	148,683	50,480	32,759	36,497	14,987	338,770

1/ Includes 634 leased trucks.

COUNTRY ELEVATORS

The importance of the class of shipper and mode of transport used at the handler location are shown in tables 12 and 13.

In 1962, the farmer-producer shipped about 78 percent of the feed grains received at country elevators. Eighty-five percent of all grains received at the same termination were also direct receipts from farmers (table 12). Merchant truckers were second highest with 8 percent for feed grains and 5 percent for all grains.

Shipments of feed grains from country elevators to various classes of receivers in 1962 were predominantly to terminal elevators and feeders (tables 14 and 15). These ranged from less than 1 percent to 36 percent at terminal elevators. The shipments were predominantly rail to terminal elevators, mostly truck to feeders, and an even distribution by both modes to processors.

Shipments of all grains from country elevators for the same period amounted to 59 percent to terminal elevators and 21 percent to feeders. The shipments were predominantly rail to terminal elevators, mostly truck to feeders, and about an even percentage by each distributed to processors.

Interstate and intrastate movements of feed grains to country elevators were reported for 1960-62 (table 16). Total interstate receipts increased 24 percent from 1960 to 1962, while intrastate receipts decreased by 2 percent.

Interstate movements of all grains to country elevators reflected increases in total receipts amounting to 17 percent, while intrastate total receipts decreased 10 percent (table 17). Receipts by rail decreased for interstate and increased for intrastate; truck receipts increased for interstate and decreased for intrastate.

Interstate and intrastate shipments of feed grains and all grains from country elevators followed the same trends with increases in volumes moved by truck, and decreases in shipments by rail (tables 18 and 19). Total shipments increased by small percentages for each category.

Table 12.--Receipts of feed grains at country elevators, by class of shipper and mode of transport, 1962

State	Direct from farmers	From merchant truckers	From country elevators		From terminal elevators		From brokers by rail	Total receipts
			Rail	Truck	Rail	Truck		
	1,000 bu.	1,000 bu.	1,000 bu.	1,000 bu.	1,000 bu.	1,000 bu.	1,000 bu.	1,000 bu.
Arizona	4,699	1,154	1,890	1,725	10,184	6,840	---	26,492
Colorado	17,737	21,008	1,163	422	1,212	---	132	41,676
New Mexico ..	11,262	6	---	---	---	---	---	11,268
Oklahoma	15,866	2,576	643	966	---	122	---	20,173
Texas	188,082	894	6,826	7,667	1,834	---	---	205,303
Total ..	237,646	25,638	10,524	10,780	13,230	6,962	132	304,912

Table 13.--Receipts of all grains at country elevators, by class of shipper and mode of transport, 1962

State	Direct from farmers	From merchant truckers	From country elevators		From terminal elevators		From brokers by rail	Total receipts
			Rail	Truck	Rail	Truck		
	1,000 bu.	1,000 bu.	1,000 bu.	1,000 bu.	1,000 bu.	1,000 bu.	1,000 bu.	1,000 bu.
Arizona	5,471	1,154	1,890	1,794	10,184	6,840	---	27,333
Colorado	65,069	21,008	1,163	422	1,212	---	132	89,006
New Mexico ..	20,407	6	---	---	---	---	---	20,413
Oklahoma	84,995	2,576	1,573	1,970	2,604	123	---	93,841
Texas	243,963	894	6,826	8,953	2,075	---	---	262,711
Total ..	419,905	25,638	11,452	13,139	16,075	6,963	132	493,304

Table 14.--Shipments of feed grains from country elevators to various classes of receivers, by rail and truck, 1962

State	Farmers	Feeders		Country elevators		Terminal elevators		Processors		Merchant truckers	Retailers	Brokers	Total shipments
		Rail	Truck	Rail	Truck	Rail	Truck	Rail	Truck				
	1,000 bushels	1,000 bushels	1,000 bushels	1,000 bushels	1,000 bushels	1,000 bushels	1,000 bushels	1,000 bushels	1,000 bushels	1,000 bushels	1,000 bushels	1,000 bushels	1,000 bushels
Arizona ...	122	12,074	13,091	---	---	---	---	---	947	---	---	42	26,276
Colorado ...	14,804	---	21,434	---	7	345	1,118	1,689	1,056	396	---	---	40,849
New Mexico ...	1,342	---	6,569	---	6	2,333	---	482	810	1,126	---	---	12,668
Oklahoma ...	9,462	---	2,352	---	24	1,629	3,196	---	333	1,018	---	---	18,014
Texas	6,585	15,708	25,508	3,715	5,441	64,149	26,233	8,613	8,029	9,052	685	532	174,250
Total ...	32,315	27,782	68,954	3,715	5,478	68,456	30,547	10,784	11,175	11,592	685	574	272,057

Table 15.--Shipments of all grains from country elevators to various classes of receivers, by rail and truck, 1962

State	Farmers	Feeders		Country elevators		Terminal elevators		Processors		Merchant truckers	Retailers	Brokers	Total shipments
		Rail	Truck	Rail	Truck	Rail	Truck	Rail	Truck				
	1,000 bushels	1,000 bushels	1,000 bushels	1,000 bushels	1,000 bushels	1,000 bushels	1,000 bushels	1,000 bushels	1,000 bushels	1,000 bushels	1,000 bushels	1,000 bushels	1,000 bushels
Arizona ...	122	12,074	13,091	---	---	49	---	458	1,281	---	---	42	27,117
Colorado ...	14,814	---	21,434	---	7	22,614	22,132	1,689	3,079	1,967	---	---	87,736
New Mexico ...	1,478	---	6,569	---	6	5,116	3,717	1,612	1,280	1,126	---	---	20,904
Oklahoma ...	9,522	---	2,352	---	303	47,467	27,865	320	1,847	1,130	---	---	90,806
Texas	7,094	15,781	25,435	3,715	6,723	102,052	40,568	10,184	10,122	9,252	739	544	232,209
Total ...	33,030	27,855	68,881	3,715	7,039	177,298	94,282	14,263	17,609	13,475	739	586	458,772

Table 16.--Interstate and intrastate movements of feed grains to country elevators, by rail and truck, 1960-62

Year and State	Interstate receipts			Intrastate receipts			Total receipts
	Rail	Truck	Total	Rail	Truck	Total	
	1,000 bushels	1,000 bushels	1,000 bushels	1,000 bushels	1,000 bushels	1,000 bushels	1,000 bushels
1960:							
Arizona	8,782	7,138	15,920	1,586	4,364	5,950	21,870
Colorado	1,470	17,150	18,557	---	18,189	18,189	36,746
New Mexico ..	---	920	920	---	9,459	9,459	10,379
Oklahoma	---	1,927	1,927	643	21,199	21,842	23,769
Texas	649	653	1,302	4,620	213,639	218,259	219,561
Total	10,838	27,788	38,626	6,849	266,850	273,699	312,325
1961:							
Arizona	8,735	6,870	15,605	1,586	4,878	6,464	22,069
Colorado	1,408	18,497	19,905	---	18,500	18,500	38,405
New Mexico ..	---	1,206	1,206	---	9,970	9,970	11,176
Oklahoma	---	1,198	1,198	---	27,398	27,398	28,596
Texas	1,504	663	2,167	6,437	199,809	206,246	208,413
Total	11,647	28,434	40,081	8,023	260,555	268,578	308,659
1962:							
Arizona	10,489	9,682	20,171	1,586	4,737	6,323	26,494
Colorado	1,420	20,210	21,630	1,087	18,957	20,044	41,674
New Mexico ..	---	2,172	2,172	---	9,097	9,097	11,269
Oklahoma	---	2,578	2,578	643	16,952	17,595	20,173
Texas	530	625	1,155	8,130	196,017	204,147	205,302
Total	12,439	35,267	47,706	11,446	245,760	257,206	304,912

Table 17.--Interstate and intrastate movements of all grains to country elevators, by rail and truck, 1960-62

Year and State	Interstate receipts			Intrastate receipts			Total receipts
	Rail	Truck	Total	Rail	Truck	Total	
	1,000 bushels	1,000 bushels	1,000 bushels	1,000 bushels	1,000 bushels	1,000 bushels	1,000 bushels
1960:							
Arizona	8,782	7,173	15,955	1,586	5,542	7,128	23,083
Colorado	1,407	17,150	18,557	---	61,565	61,565	80,122
New Mexico ..	---	1,303	1,303	---	16,508	16,508	17,811
Oklahoma	4,128	1,927	6,055	1,763	113,138	114,901	120,956
Texas	769	812	1,581	4,977	286,052	291,029	292,610
Total	15,086	28,365	43,451	8,326	482,805	491,131	534,582
1961:							
Arizona	8,735	6,918	15,653	1,586	5,839	7,425	23,078
Colorado	1,408	18,497	19,905	---	63,830	63,830	83,735
New Mexico ..	---	1,521	1,521	---	20,613	20,613	22,134
Oklahoma	1,741	1,198	2,939	1,191	123,708	124,899	127,838
Texas	1,964	1,178	3,142	6,754	291,042	297,796	300,938
Total	13,848	29,312	43,160	9,531	505,032	514,563	557,723
1962:							
Arizona	10,489	9,751	20,240	1,586	5,508	7,094	27,334
Colorado	1,420	20,210	21,630	1,087	66,289	67,376	89,006
New Mexico ..	---	2,532	2,532	---	17,881	17,881	20,413
Oklahoma	2,412	2,578	4,990	765	87,086	87,851	92,841
Texas	650	846	1,496	8,250	252,963	261,213	262,709
Total	14,971	35,917	50,888	11,688	429,727	441,415	492,303

Table 18.--Interstate and intrastate shipments of feed grains from country elevators, by rail and truck, 1960-62

Year and State	Interstate shipments			Intrastate shipments			Total shipments
	Rail	Truck	Total	Rail	Truck	Total	
	1,000 bushels	1,000 bushels	1,000 bushels	1,000 bushels	1,000 bushels	1,000 bushels	1,000 bushels
1960:							
Arizona	---	---	---	5,590	4,355	9,945	9,945
Colorado	9	4,041	4,050	2,235	31,171	33,406	37,456
New Mexico	2,180	1,762	3,942	---	5,012	5,012	8,954
Oklahoma	2,683	1,888	4,571	419	14,318	14,737	19,308
Texas	36,598	1,730	38,328	20,230	70,432	90,662	128,990
Total	41,469	9,421	50,891	28,474	125,288	153,762	204,653
1961:							
Arizona	---	---	---	5,074	4,993	10,067	10,067
Colorado	236	349	585	2,515	36,520	39,035	39,620
New Mexico	504	536	1,040	1,288	6,095	7,383	8,423
Oklahoma	505	2,342	2,847	1,060	20,805	21,865	24,712
Texas	13,451	10,412	23,863	53,781	91,137	144,918	168,781
Total	14,696	13,639	28,335	63,718	159,550	223,268	251,603
1962:							
Arizona	---	---	---	12,074	14,202	26,276	26,276
Colorado	9	3,818	3,827	2,025	34,998	37,023	40,850
New Mexico	482	6,372	6,854	---	5,814	5,814	12,668
Oklahoma	760	1,455	2,215	869	14,929	15,798	18,013
Texas	13,619	27,954	41,573	1,401	131,276	132,677	174,250
Total	14,870	39,599	54,469	16,369	201,219	217,588	272,057

Table 19.--Interstate and intrastate shipments of all grains from country elevators, by rail and truck, 1960-62

Year and State	Interstate shipments			Intrastate shipments			Total shipments
	Rail	Truck	Total	Rail	Truck	Total	
	1,000 bushels	1,000 bushels	1,000 bushels	1,000 bushels	1,000 bushels	1,000 bushels	1,000 bushels
1960:							
Arizona	790	145	935	5,590	4,522	10,112	11,047
Colorado	20,697	22,594	43,291	5,451	32,302	37,753	81,044
New Mexico	6,163	3,029	9,192	---	5,012	5,012	14,204
Oklahoma	18,406	19,271	37,677	22,548	43,293	65,841	103,518
Texas	53,669	2,482	56,151	34,575	101,375	135,950	192,101
Total	99,725	47,521	147,246	68,164	186,504	254,668	401,914
1961:							
Arizona	388	123	511	5,686	5,215	10,901	11,412
Colorado	18,230	21,177	39,407	5,800	37,658	43,458	82,865
New Mexico	6,412	2,161	8,573	1,288	6,111	7,399	15,972
Oklahoma	40,266	8,219	48,485	21,015	49,459	70,474	118,959
Texas	29,047	22,508	51,555	74,509	131,631	206,140	257,695
Total	94,343	54,188	148,531	108,298	230,074	338,372	486,903
1962:							
Arizona	508	145	653	12,074	14,390	26,464	27,117
Colorado	19,846	26,589	46,435	5,442	35,861	41,303	87,738
New Mexico	4,393	10,090	14,483	---	6,421	6,421	20,904
Oklahoma	20,324	21,954	42,278	13,941	34,587	48,528	90,806
Texas	29,042	28,913	57,955	28,514	145,742	174,256	232,211
Total	74,113	87,691	161,804	59,971	237,001	296,972	458,776

GRAIN PROCESSORS

The importance of the class of shipper and mode of transport used at the handler location are shown in tables 20 and 21.

In 1962, the country elevators were the heaviest shippers of feed grains to the processing plants. Of total receipts at the processor, about 39 percent were from country elevators, 22 percent from terminal elevators, and 22 percent from merchant truckers. Trucks were used predominantly for transporting these grains. Forty-five percent of the receipts of all grains at the same termination came from terminal elevators; 28 percent of all grains came from country elevators. Terminal elevators used rail transportation for 32 percent of their shipments, and country elevators used mostly truck. Farmers and merchant truckers also had sizable truck shipments to grain processors.

Shipments of feed grains from grain processors to various classes of receivers in 1962 were mostly to feeders and processors (tables 22 and 23). Fifty percent of the shipments were received by feeders, 14 percent by farmers, 8 percent by processors, and 9 percent by retailers. Nearly all movements were by truck.

Interstate and intrastate movements of feed grains to grain processors were reported for 1960-62 (table 24). Total interstate receipts decreased about 1 percent from 1960 to 1962, and intrastate receipts increased 34 percent for the same period. Receipts of feed grains by truck increased 24 percent.

Interstate movements of all grains to grainprocessors decreased 4 percent, while intrastate receipts increased 13 percent (table 25). Receipts by rail decreased and receipts by truck increased, which is the usual trend in movements of this nature.

Interstate and intrastate shipments of feed grains increased by 37 and 58 percent, respectively (table 26). There were increases in both rail and truck for both interstate and intrastate shipments. All grain shipped interstate declined about 40 percent in volume and all intrastate shipments increased about 60 percent (table 27). Where there were interstate declines in rail shipments, truck shipments increased. There were increases in both rail and truck for intrastate shipments.

Table 20.--Receipts of feed grains at grain processing plants, by class of shipper and mode of transport, 1962

State	Direct from farmers	From merchant truckers	From country elevators		From terminal elevators		From brokers		Total receipts
			Rail	Truck	Rail	Truck	Rail	Truck	
	1,000	1,000	1,000	1,000	1,000	1,000	1,000	1,000	1,000
	bu.	bu.	bu.	bu.	bu.	bu.	bu.	bu.	bu.
Arizona	2,881	141	67	432	638	546	236	367	5,308
Colorado	8,299	10,127	2,862	20,044	1,666	504	2,683	1,897	48,082
New Mexico ..	6,776	---	---	1,795	---	556	---	---	9,127
Oklahoma	2,969	23,686	---	1,822	4,589	2,189	---	---	35,255
Texas	5,046	6,764	21,624	23,939	22,814	7,089	694	70	88,040
Total ..	25,971	40,718	24,553	48,032	29,707	10,884	3,613	2,334	185,812

Table 21.--Receipts of all grains at grain processing plants, by class of shipper and mode of transport, 1962

State	Direct from farmers	From merchant truckers	From country elevators		From terminal elevators		From brokers	Total receipts
			Rail	Truck	Rail	Truck		
	1,000	1,000	1,000	1,000	1,000	1,000	1,000	1,000
	bu.	bu.	bu.	bu.	bu.	bu.	bu.	bu.
Arizona	3,499	456	67	432	638	554	603	6,249
Colorado	9,794	11,058	810	23,058	1,307	863	1/4,580	51,470
New Mexico ..	7,379	---	---	1,798	---	624	---	9,801
Oklahoma	11,045	23,686	1,541	4,698	50,418	8,783	---	100,171
Texas	7,358	9,909	29,039	34,781	55,568	34,834	2/764	172,253
Total ..	39,075	45,109	31,457	64,767	107,931	45,658	5,947	339,944

1/ Includes 2,683 rail receipts.

2/ Includes 694 rail receipts.

Table 22.--Shipments of feed grains from grain processors to various classes of receivers, by rail and truck, 1962

State	Farmers	Feeders		Country elevators		Terminal elevators		Processors		Merchant truckers	Retailers	From brokers by rail	Total shipments
		Rail	Truck	Rail	Truck	Rail	Truck	Rail	Truck				
	1,000 bu.	1,000 bu.	1,000 bu.	1,000 bu.	1,000 bu.	1,000 bu.	1,000 bu.	1,000 bu.	1,000 bu.	1,000 bu.	1,000 bu.	1,000 bu.	1,000 bu.
Arizona	---	23	118	---	---	---	---	---	---	---	---	---	141
Colorado	2,052	189	3,814	1,080	---	---	---	27	160	---	263	958	8,543
New Mexico ..	27	---	62	644	---	---	---	---	---	---	---	---	733
Oklahoma	984	---	983	---	---	473	---	---	818	169	689	---	4,116
Texas	491	1,276	5,827	---	---	335	71	478	492	703	1,312	---	10,985
Total ..	3,554	1,488	10,804	1,724	---	808	71	505	1,470	872	2,264	958	24,518

Table 23.--Shipments of all grains from grain processors to various classes of receivers, by rail and truck, 1962

State	Farmers	Feeders		Country elevators		Terminal elevators		Processors		Merchant truckers	Retailers	Brokers	Total shipments
		Rail	Truck	Rail	Truck	Rail	Truck	Rail	Truck				
	1,000 bu.	1,000 bu.	1,000 bu.	1,000 bu.	1,000 bu.	1,000 bu.	1,000 bu.	1,000 bu.	1,000 bu.	1,000 bu.	1,000 bu.	1,000 bu.	1,000 bu.
Arizona	---	23	118	---	---	---	---	---	11	---	---	---	152
Colorado	2,088	189	3,814	1,080	---	290	659	27	367	22	263	1/1,021	9,820
New Mexico ..	27	---	62	644	---	300	---	---	229	---	---	---	1,262
Oklahoma	984	---	983	---	---	5,874	1,739	1,257	956	169	689	---	12,651
Texas	491	1,276	5,827	---	---	5,840	296	478	875	703	1,312	32	17,130
Total ..	3,590	1,488	10,804	1,724	---	12,304	2,694	1,762	2,438	894	2,264	1,053	41,015

1/ Includes 958 rail shipments.

Table 24.--Interstate and intrastate movements of feed grains to grain processors, by rail and truck, 1960-62

Year and State	Interstate receipts			Intrastate receipts			Total receipts
	Rail	Truck	Total	Rail	Truck	Total	
	1,000	1,000	1,000	1,000	1,000	1,000	1,000
	bushels	bushels	bushels	bushels	bushels	bushels	bushels
1960:							
Arizona	---	4,015	4,015	221	793	1,014	5,029
Colorado	4,310	13,836	18,146	198	32,359	32,557	50,703
New Mexico	---	1,214	1,214	---	2,003	2,003	3,217
Oklahoma	615	19,544	20,159	1,474	9,560	11,034	31,193
Texas	21,364	6,460	27,824	15,514	24,191	39,705	67,529
Total	26,289	45,069	71,358	17,407	68,906	86,313	157,671
1961:							
Arizona	368	1,986	2,354	14	3,426	3,440	5,794
Colorado	6,871	11,460	18,331	277	32,560	32,837	51,168
New Mexico	---	1,295	1,295	---	3,068	3,068	4,363
Oklahoma	2,149	17,430	19,579	2,332	8,160	10,492	30,071
Texas	18,953	8,750	27,703	13,683	20,466	34,149	61,852
Total	28,340	40,921	69,261	16,306	67,680	83,986	153,247
1962:							
Arizona	1,000	1,126	2,126	39	3,242	3,281	5,407
Colorado	4,988	13,054	18,042	169	29,870	30,039	48,081
New Mexico	---	1,383	1,383	---	7,745	7,745	9,128
Oklahoma	756	20,566	21,322	3,832	10,101	13,933	35,255
Texas	18,714	8,759	27,473	26,417	34,151	60,568	88,041
Total	25,458	44,888	70,346	30,457	85,109	115,566	185,912

Table 25.--Interstate and intrastate movements of all grains to grain processors, by rail and truck, 1960-62

Year and State	Interstate receipts			Intrastate receipts			Total receipts
	Rail	Truck	Total	Rail	Truck	Total	
	1,000	1,000	1,000	1,000	1,000	1,000	1,000
	bushels	bushels	bushels	bushels	bushels	bushels	bushels
1960:							
Arizona	---	4,015	4,015	221	1,773	1,994	6,009
Colorado	4,310	13,878	18,188	318	35,721	36,039	54,227
New Mexico	---	1,274	1,274	---	2,569	2,569	3,843
Oklahoma	18,812	33,797	52,609	26,040	26,440	52,480	105,089
Texas	62,802	13,996	76,798	43,809	33,896	77,705	154,503
Total	85,924	66,960	152,884	70,388	100,399	170,787	323,671
1961:							
Arizona	610	1,986	2,596	14	4,105	4,119	6,715
Colorado	6,871	11,502	18,373	277	36,077	36,354	54,727
New Mexico	---	1,363	1,363	---	3,068	3,068	4,431
Oklahoma	20,346	31,669	52,015	21,134	29,147	50,281	102,296
Texas	65,079	12,994	78,073	40,526	29,976	70,502	148,575
Total	92,906	59,514	152,420	61,951	102,373	164,324	316,744
1962:							
Arizona	1,000	1,449	2,449	39	3,860	3,899	6,348
Colorado	4,988	13,096	18,084	169	33,215	33,384	51,468
New Mexico	---	1,453	1,453	---	8,349	8,349	9,802
Oklahoma	10,716	38,178	48,894	31,282	19,994	51,276	100,170
Texas	60,056	16,541	76,597	38,131	57,527	95,658	172,255
Total	76,760	70,717	147,477	69,621	122,945	192,566	340,043

Table 26.--Interstate and intrastate shipments of feed grains from grain processors, by rail and truck, 1960-62

Year and State	Interstate shipments			Intrastate shipments			Total shipments
	Rail	Truck	Total	Rail	Truck	Total	
	1,000	1,000	1,000	1,000	1,000	1,000	1,000
	bushels	bushels	bushels	bushels	bushels	bushels	bushels
1960:							
Arizona	---	12	12	---	---	---	12
Colorado	970	1,126	2,096	1,012	2,245	3,257	5,353
New Mexico	414	---	414	---	21	21	435
Oklahoma	86	169	255	405	3,181	3,586	3,841
Texas	---	---	---	1,606	4,668	6,274	6,274
Total	1,470	1,307	2,777	3,023	10,115	13,138	15,915
1961:							
Arizona	---	---	---	---	---	---	---
Colorado	970	1,175	2,145	1,012	2,213	3,225	5,370
New Mexico	414	---	414	---	20	20	434
Oklahoma	---	169	169	676	3,316	3,992	4,161
Texas	---	---	---	1,141	4,509	5,650	5,650
Total	1,384	1,344	2,728	2,829	10,058	12,887	15,615
1962:							
Arizona	---	11	11	23	118	141	141
Colorado	1,173	1,651	2,824	1,025	4,693	5,718	8,542
New Mexico	643	---	643	---	88	88	731
Oklahoma	---	320	320	473	3,324	3,797	4,117
Texas	---	---	---	2,090	8,895	10,985	10,985
Total	1,816	1,982	3,798	3,611	17,118	20,729	24,516

Table 27.--Interstate and intrastate shipments of all grains from grain processors, by rail and truck, 1960-62

Year and State	Interstate shipments			Intrastate shipments			Total shipments
	Rail	Truck	Total	Rail	Truck	Total	
	1,000	1,000	1,000	1,000	1,000	1,000	1,000
	bushels	bushels	bushels	bushels	bushels	bushels	bushels
1960:							
Arizona	---	12	12	---	---	---	12
Colorado	1,125	1,581	2,706	1,075	2,797	3,872	6,578
New Mexico	808	---	808	---	21	21	829
Oklahoma	8,838	1,132	9,970	878	3,954	4,832	14,802
Texas	---	---	---	4,059	8,053	12,112	12,112
Total	10,771	2,725	13,496	6,012	14,825	20,837	34,333
1961:							
Arizona	---	---	---	---	---	---	---
Colorado	1,299	1,333	2,632	1,537	2,308	3,845	6,477
New Mexico	827	2	829	---	20	20	849
Oklahoma	10,623	1,205	11,828	1,263	3,759	5,022	16,850
Texas	---	---	---	1,195	15,631	16,826	16,826
Total	12,749	2,540	15,289	3,995	21,718	25,713	41,002
1962:							
Arizona	---	11	11	23	118	141	152
Colorado	1,521	2,111	3,632	1,025	5,161	6,186	9,818
New Mexico	943	229	1,172	---	88	88	1,260
Oklahoma	2,327	840	3,167	4,809	4,677	9,486	12,653
Texas	---	---	---	3,311	13,820	17,131	17,131
Total	4,791	3,191	7,982	9,168	23,864	33,032	41,014

TERMINAL ELEVATORS

The importance of the class of shipper and mode of transport used at the handler location are shown in tables 28 and 29.

In 1962, the heaviest receipts at terminal elevators were from other terminal elevators, about 64 percent. Thirty percent were from country elevators, and the largest volumes from each source arrived by rail. Receipts of all grains at terminal elevators were about 60 percent from other terminal elevators, 23 percent from country elevators, and about 70 percent received by rail.

Shipments of feed grains from terminal elevators (tables 30 and 31) show that terminal elevators and processors conduct a steady flow of shipments between each location. Shipments to other terminal elevators amounted to 65 percent of all shipments, and 24 percent were received by other processors. All grain followed the same pattern as feed grains. Eighty-one percent went to other terminal elevators, and 15 percent to processors.

Interstate and intrastate movements of feed grains to terminal elevators declined rapidly from 1960 to 1962. While unspecified amounts of rye and other small grains could not be isolated from volumes reported during some of the periods, it is reasonable to assume that sizable decreases occurred in interstate movements of these grains into terminal elevators. Intrastate receipts followed the pattern of total receipts, with a decrease around 50 percent. All grains moved to terminal elevators followed the feed grains movement (tables 32 and 33).

Interstate and intrastate shipments of feed grains from terminal elevators showed decreases in both categories ranging from 4 to 18 percent. Rail shipments remained stable for intrastate shipments. All grains shipped from terminal elevators declined in volume from 12 to 4 percent. These declines were influenced by the downward trend caused by feed grains at the location (tables 34 and 35).

Table 28.--Receipts of feed grains at terminal elevators, by class of shipper and mode of transport, 1962

State	Direct from farmers	Country elevators		Terminal elevators		Merchant truckers	Total receipts
		Rail	Truck	Rail	Truck		
	1,000 bushels	1,000 bushels	1,000 bushels	1,000 bushels	1,000 bushels	1,000 bushels	1,000 bushels
Colorado ..	4	3,748	---	360	---	---	4,112
Oklahoma ..	224	7,946	1,427	4	37	557	10,195
Texas	16,733	41,270	37,911	150,438	45,701	203	292,256
Total ..	16,961	52,964	39,338	150,802	45,738	760	306,563

Table 29.--Receipts of all grains at terminal elevators, by class of shipper and mode of transport, 1962

State	Direct from farmers	Country elevators		Terminal elevators		Merchant truckers	Total receipts
		Rail	Truck	Rail	Truck		
	1,000 bushels	1,000 bushels	1,000 bushels	1,000 bushels	1,000 bushels	1,000 bushels	1,000 bushels
Colorado ..	418	18,323	---	360	---	---	19,101
Oklahoma ..	2,718	70,233	3,984	2,477	37	557	80,006
Texas	20,222	111,818	109,113	433,400	87,408	5,942	767,903
Total ..	23,358	200,374	113,097	436,237	87,445	6,499	867,010

Table 30.--Shipments of feed grains from terminal elevators to various classes of receivers, by rail and truck, 1962

State	Farmers	Feeders		Country elevators		Terminal elevators		Processors		Merchant truckers	Retailers	Total shipments
		Rail	Truck	Rail	Truck	Rail	Truck	Rail	Truck			
	1,000 bu.	1,000 bu.	1,000 bu.	1,000 bu.	1,000 bu.	1,000 bu.	1,000 bu.	1,000 bu.	1,000 bu.	1,000 bu.	1,000 bu.	1,000 bu.
Colorado ..	---	153	---	---	---	102	---	4,352	105	---	---	4,712
Oklahoma ..	332	---	---	---	---	1,436	984	830	732	---	---	4,314
Texas	500	6,289	4,443	---	1,696	77,038	2,103	20,794	2,656	442	252	116,213
Total ..	832	6,442	4,443	---	1,696	78,576	3,087	25,976	3,493	442	252	125,239

Table 31.--Shipments of all grains from terminal elevators to various classes of receivers, by rail and truck, 1962

State	Farmers	Feeders		Country elevators		Terminal elevators		Processors		Merchant truckers	Retailers	Total shipments
		Rail	Truck	Rail	Truck	Rail	Truck	Rail	Truck			
	1,000 bu.	1,000 bu.	1,000 bu.	1,000 bu.	1,000 bu.	1,000 bu.	1,000 bu.	1,000 bu.	1,000 bu.	1,000 bu.	1,000 bu.	1,000 bu.
Colorado ...	---	153	---	---	---	436	---	5,837	855	---	---	7,281
Oklahoma ..	332	---	---	---	---	90,980	56,692	2,173	3,499	---	---	153,876
Texas	500	6,289	4,443	---	1,696	135,266	7,309	36,730	4,258	442	504	197,437
Total ..	832	6,442	4,443	---	1,696	226,682	64,201	44,740	8,612	442	504	358,594

Table 32.--Interstate and intrastate movements of feed grains to terminal elevators, by rail and truck, 1960-62

Year and State	Interstate receipts			Intrastate receipts			Total receipts
	Rail	Truck	Total	Rail	Truck	Total	
1960:	1,000	1,000	1,000	1,000	1,000	1,000	1,000
	<u>bushels</u>	<u>bushels</u>	<u>bushels</u>	<u>bushels</u>	<u>bushels</u>	<u>bushels</u>	<u>bushels</u>
Arizona	---	---	---	---	---	---	---
Colorado	5,026	98	5,124	1,872	252	2,124	7,248
New Mexico	---	---	---	---	---	---	---
Oklahoma	3,167	483	3,650	2,226	517	2,743	6,393
Texas	98,239	12,583	110,822	348,213	130,446	478,659	<u>1/589,481</u>
Total	106,432	13,164	119,596	352,311	131,215	483,526	<u>1/603,122</u>
1961:							
Arizona	---	---	---	---	---	---	---
Colorado	4,108	---	4,108	---	4	4	4,112
New Mexico	---	---	---	---	---	---	---
Oklahoma	5,024	402	5,426	5,590	1,849	7,439	12,865
Texas	15,018	107,278	122,296	218,978	10,612	229,590	<u>1/351,886</u>
Total	24,150	107,680	131,830	224,568	12,465	237,033	<u>1/368,863</u>
1962:							
Arizona	---	---	---	---	---	---	---
Colorado	4,109	---	4,109	---	4	4	4,113
New Mexico	---	---	---	---	---	---	---
Oklahoma	3,706	996	4,702	4,241	1,253	5,494	10,196
Texas	6,498	6,853	13,351	185,210	93,695	278,905	<u>1/292,256</u>
Total	14,313	7,849	22,162	189,451	94,952	284,403	<u>1/306,565</u>

1/ Includes unspecified quantities of rye and other small grains.

Table 33.--Interstate and intrastate movements of all grains to terminal elevators, by rail and truck, 1960-62

Year and State	Interstate receipts			Intrastate receipts			Total receipts
	Rail	Truck	Total	Rail	Truck	Total	
1960:	1,000	1,000	1,000	1,000	1,000	1,000	1,000
	<u>bushels</u>	<u>bushels</u>	<u>bushels</u>	<u>bushels</u>	<u>bushels</u>	<u>bushels</u>	<u>bushels</u>
Arizona	---	---	---	---	---	---	---
Colorado	23,328	152	23,480	1,872	612	2,484	25,964
New Mexico	---	---	---	---	---	---	---
Oklahoma	64,966	565	65,531	70,739	21,469	92,208	157,739
Texas	479,817	13,171	492,988	681,178	148,061	829,239	<u>1/1,322,227</u>
Total	568,111	13,888	581,999	753,789	170,142	923,931	<u>1/1,505,930</u>
1961:							
Arizona	---	---	---	---	---	---	---
Colorado	18,683	54	18,737	---	364	364	19,101
New Mexico	---	---	---	---	---	---	---
Oklahoma	63,749	424	64,173	65,885	9,483	75,368	139,541
Texas	149,807	108,059	257,866	522,292	153,361	675,653	<u>1/933,519</u>
Total	232,239	108,537	340,776	588,177	163,208	751,385	<u>1/1,092,161</u>
1962:							
Arizona	---	---	---	---	---	---	---
Colorado	18,683	54	18,737	39,511	305	39,816	58,613
New Mexico	---	---	---	---	---	---	---
Oklahoma	33,200	1,087	34,287	---	6,210	6,210	40,497
Texas	87,837	7,525	95,362	457,380	215,161	672,541	<u>1/767,903</u>
Total	139,720	8,666	148,386	496,891	221,736	718,627	<u>1/867,013</u>

1/ Includes unspecified quantities of rye and other small grains.

Table 34.--Interstate and intrastate shipments of feed grains from terminal elevators, by rail and truck, 1960-62

Year and State	Interstate shipments			Intrastate shipments			Total shipments
	Rail	Truck	Total	Rail	Truck	Total	
	1,000 bushels	1,000 bushels	1,000 bushels	1,000 bushels	1,000 bushels	1,000 bushels	1,000 bushels
1960:							
Arizona	---	---	---	---	---	---	---
Colorado	4,605	---	4,605	---	105	105	4,710
New Mexico	---	---	---	---	---	---	---
Oklahoma	3,837	1,600	5,437	17	1,511	1,528	6,965
Texas	9,477	6,429	15,906	97,837	12,971	110,808	126,714
Total	17,919	8,029	25,948	97,854	14,587	112,441	138,389
1961:							
Arizona	---	---	---	---	---	---	---
Colorado	4,605	---	4,605	---	105	105	4,710
New Mexico	---	---	---	---	---	---	---
Oklahoma	9,901	953	10,854	50	1,146	1,196	12,050
Texas	11,456	7,341	18,797	99,097	13,994	113,091	131,888
Total	25,962	8,294	34,256	99,147	15,245	114,392	148,648
1962:							
Arizona	---	---	---	---	---	---	---
Colorado	4,605	---	4,605	---	105	105	4,710
New Mexico	---	---	---	---	---	---	---
Oklahoma	1,615	1,034	2,649	651	1,013	1,664	4,313
Texas	7,781	6,272	14,053	96,685	5,995	102,680	116,733
Total	14,001	7,306	21,307	97,336	7,113	104,449	125,756

Table 35.--Interstate and intrastate shipments of all grains from terminal elevators, by rail and truck, 1960-62

Year and State	Interstate shipments			Intrastate shipments			Total shipments
	Rail	Truck	Total	Rail	Truck	Total	
	1,000 bushels	1,000 bushels	1,000 bushels	1,000 bushels	1,000 bushels	1,000 bushels	1,000 bushels
1960:							
Arizona	---	---	---	---	---	---	---
Colorado	6,425	---	6,425	---	855	855	7,280
New Mexico	---	---	---	---	---	---	---
Oklahoma	133,204	6,212	139,416	636	1,511	2,147	141,563
Texas	14,648	6,561	21,209	183,040	18,947	201,987	223,196
Total	154,277	12,773	167,050	183,676	21,313	204,989	372,039
1961:							
Arizona	---	---	---	---	---	---	---
Colorado	6,425	---	6,425	---	855	855	7,280
New Mexico	---	---	---	---	---	---	---
Oklahoma	142,750	48,213	190,963	669	2,233	2,902	193,865
Texas	19,807	7,545	27,352	195,217	20,578	215,795	243,147
Total	168,982	55,758	224,740	195,886	23,666	219,552	444,292
1962:							
Arizona	---	---	---	---	---	---	---
Colorado	6,425	---	6,425	---	855	855	7,280
New Mexico	---	---	---	---	---	---	---
Oklahoma	91,883	58,326	150,209	1,270	2,396	3,666	153,875
Texas	14,320	6,571	20,891	163,965	12,581	176,546	197,437
Total	112,628	64,897	177,525	165,235	15,832	181,067	358,592

U. S. Department of Agriculture
Washington, D.C. 20250

POSTAGE AND FEES PAID
U. S. Department of Agriculture

OFFICIAL BUSINESS

END