



AgEcon SEARCH

RESEARCH IN AGRICULTURAL & APPLIED ECONOMICS

The World's Largest Open Access Agricultural & Applied Economics Digital Library

This document is discoverable and free to researchers across the globe due to the work of AgEcon Search.

Help ensure our sustainability.

Give to AgEcon Search

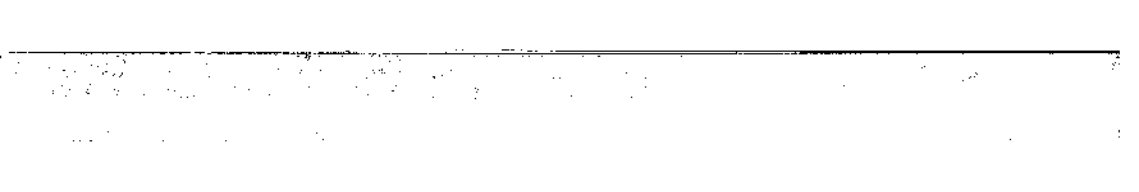
AgEcon Search

<http://ageconsearch.umn.edu>

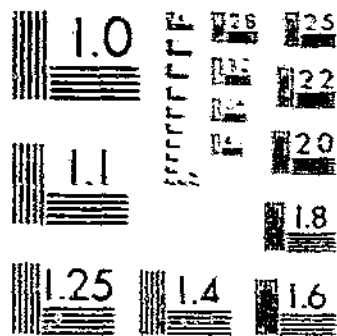
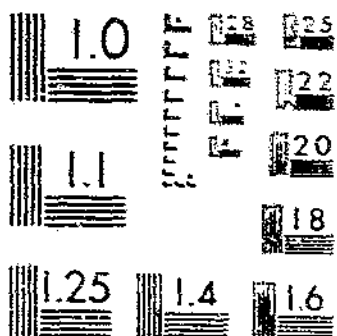
aesearch@umn.edu

*Papers downloaded from **AgEcon Search** may be used for non-commercial purposes and personal study only. No other use, including posting to another Internet site, is permitted without permission from the copyright owner (not AgEcon Search), or as allowed under the provisions of Fair Use, U.S. Copyright Act, Title 17 U.S.C.*

No endorsement of AgEcon Search or its fundraising activities by the author(s) of the following work or their employer(s) is intended or implied.



START



EC-107-10-11-60

Turkeys

FARM PRODUCTION
DISPOSITION
CASH RECEIPTS
GROSS INCOME
BY STATES

Revised Estimates 1955-59

INCLUDING NUMBERS ON FARMS

January 1, 1956 - 60

Statistical Bulletin No. 286

UNITED STATES DEPARTMENT OF AGRICULTURE
Statistical Reporting Service
Crop Reporting Board

Washington, D. C.

Indexed for effect
in market

May 1961

CONTENTS

	Page
Comments	3
TURKEYS:	
Table 1. --Farm production and disposition, by States, 1955-59:	
Number raised by breeds	5
Number raised all breeds, Number lost	6
Number produced, Pounds produced	7
Number consumed in farm household, Pounds consumed in farm household	8
Number sold from farms, Pounds sold from farms ..	9
Table 2. --Prices and value of production, by States, 1955-59	10
Table 3. --Value of birds consumed in farm household and cash receipts, by States, 1955-59	11
Table 4. --Gross income from farm production, by States, 1955-59 .	12
Table 5. --Average live weight per bird sold from farms, by classes, by States, 1955-59	13
Table 6. --All turkeys and breeder hens on farms January 1, by States, 1950-60	15
Table 7. --Value per head and total value on farms January 1, by States, 1950-60	18
Table 8. --Percentage death loss of turkeys, by regions, 1955-59...	19

For earlier years in the series covered
in this report see bulletins with similar
title for

1950-54.	Published June	1956
1945-49.	Published May	1952
1929-44.	Published June	1953

TURKEYS

Farm Production, Disposition, Cash Receipts, and Gross Income, By States
Revised Estimates 1955-59, and Numbers on Farms January 1, 1955-60

Revised estimates of farm production, disposition, and income from turkeys are presented in this report for 1955-59. These revisions resulted from a review and analysis of the 1959 Census of Agriculture enumeration of turkeys kept for breeders and turkeys raised during 1959 and of other available data relating to the production and disposition of turkeys. Revised estimates of breeder hens and all turkeys on January 1, 1955-60 also appear in this bulletin.

Turkeys Raised: These estimates are based primarily on hatchery records of placement of poults with allowance for death loss, adjusted where necessary in line with Census enumeration, market receipts, or assessor's enumerations.

January 1 Inventory Numbers: Inventory numbers of turkey breeder hens on farms January 1, 1960 were based primarily upon the Census enumeration and upon records of turkeys tested for pullorum disease. Annual changes in the estimates for intervening years are based on surveys of turkey growers and records of turkeys tested by official State agencies. Estimates of all turkeys on January 1 are made by adding estimates of market turkeys to the number of breeders on hand. Market turkeys are determined from grower surveys and from slaughter records.

Death Loss of Turkeys on Farms January 1: The estimates of the annual death loss of turkeys on farms are derived from losses as reported by turkey producers. These losses represent primarily the loss of breeder hens.

Turkeys Produced: This estimate represents the net annual farm production of turkeys, computed from the number raised during the year, less the death loss of turkeys that were on hand at the beginning of the year.

Farm Consumption: Consumption of turkeys in the households of farm producers is estimated from information from turkey growers who report the number of turkeys consumed in their households. The average consumption per turkey farm was multiplied by the estimated number of farms raising turkeys. Consumption in households of producers is less than 1 percent of production for the United States and will no longer be estimated as a separate item. Turkeys consumed in households of producers will be included in the estimate of turkeys sold.

Sales: The annual sales as shown in this publication are equal to the estimated production adjusted for inventory changes, less the consumption in farm households. Beginning with the year 1960, consumption in farm households will be included in the sales estimate.

Prices: The average value per head of turkeys on hand January 1, is based on the values reported by general crop correspondents. The average annual price per pound of turkey live weight is computed from monthly prices per pound received by farmers weighted by the estimated pounds sold each month.

Average Weight per Turkey Sold: The average live weight of turkeys sold is estimated from the average weights of turkey hens, toms, and fryer-roasters sold during the year as reported by turkey producers and from slaughter plant information.

Income: Cash receipts from turkeys is computed by multiplying the yearly total pounds of turkeys sold by the estimated annual price per pound received by farmers. Gross income is cash receipts plus the value of turkeys consumed in farm households, where produced. Turkey consumed at home is evaluated at the average annual price per pound received for turkeys sold.

Table 1.--Turkeys: Farm production and disposition, by States, 1955-59

State and division	Number raised									
	Heavy breeds					Light breeds				
	1955	1956	1957	1958	1959	1955	1956	1957	1958	1959
	Thou.	Thou.	Thou.	Thou.	Thou.	Thou.	Thou.	Thou.	Thou.	Thou.
Maine	156	151	150	145	64	173	16	7	4	2
New Hampshire	135	118	130	121	122	6	3	2	2	0
Vermont	111	113	108	72	61	2	2	2	1	0
Massachusetts	54	561	524	470	445	48	10	8	10	8
Rhode Island	48	41	37	28	18	4	2	2	1	2
Connecticut	251	254	225	197	199	20	9	9	5	2
New York	916	898	779	771	759	58	57	50	12	11
New Jersey	203	212	191	159	150	131	55	23	14	14
Pennsylvania	1,645	1,742	1,734	1,521	1,549	652	371	197	156	101
North Atlantic	4,080	4,060	3,680	3,440	3,389	1,020	507	280	205	142
Ohio	2,082	2,501	2,353	2,432	1,976	858	674	640	691	1,042
Indiana	1,324	1,563	1,450	2,674	2,548	632	416	500	516	631
Illinois	829	1,079	1,237	1,213	1,091	67	77	63	113	148
Michigan	795	915	1,076	1,005	1,049	169	174	296	149	200
Wisconsin	1,656	2,205	2,442	2,649	4,122	555	336	203	126	127
East North Cent.	8,666	9,359	9,266	9,803	10,768	2,319	1,679	1,722	1,577	2,345
Minnesota	9,137	7,939	6,652	9,313	11,582	2,643	1,626	1,286	1,226	1,631
Iowa	4,190	5,516	5,810	5,829	6,785	263	317	490	675	1,380
Missouri	1,653	2,723	3,053	3,154	3,397	589	378	110	199	492
North Dakota	387	532	621	722	833	120	46	21	25	20
South Dakota	171	519	585	676	714	68	93	96	32	77
Nebraska	77	895	846	1,016	945	69	66	61	23	38
Kansas	638	866	775	710	737	92	74	66	38	68
West North Cent.	11,437	19,011	20,342	21,500	24,953	3,654	2,392	2,134	2,410	3,726
Delaware	99	155	113	113	132	229	810	543	399	335
Maryland	224	300	294	241	209	311	107	162	67	45
Virginia	1,910	2,625	2,682	2,021	1,598	3,619	3,644	4,434	4,455	5,162
West Virginia	529	694	586	496	380	1,107	1,007	975	958	655
North Carolina	914	1,241	1,724	1,540	1,424	139	54	92	182	186
South Carolina	882	1,191	1,118	911	804	234	25	74	19	42
Georgia	210	351	389	336	373	6	9	7	1	4
Florida	115	154	174	164	175	50	69	134	92	274
South Atlantic	4,383	6,711	7,066	5,822	5,155	6,266	5,925	6,441	6,193	6,904
Kentucky	333	353	382	425	447	90	61	16	16	6
Tennessee	158	189	181	170	97	17	21	16	17	38
Alabama	150	208	137	232	192	126	57	88	118	123
Mississippi	123	157	159	155	138	24	5	4	20	70
Arkansas	1,136	1,743	2,057	2,120	1,682	421	484	340	343	393
Louisiana	64	74	76	70	65	12	3	3	0	0
Oklahoma	516	816	954	932	941	208	224	200	187	155
Texas	2,621	3,950	4,036	3,686	2,768	411	407	559	385	642
South Central	5,123	7,505	7,976	7,191	6,359	1,309	1,262	1,236	1,093	1,427
Montana	49	56	46	18	24	18	28	7	1	4
Idaho	98	140	177	179	195	24	30	29	35	45
Wyoming	9	10	10	11	10	4	4	2	1	2
Colorado	76	1,116	1,160	1,312	1,272	70	45	24	14	14
New Mexico	47	54	76	74	78	9	4	3	6	5
Arizona	94	120	108	100	103	3	2	1	0	0
Utah	2,033	2,322	2,480	2,591	2,238	739	395	185	207	266
Nevada	1	6	6	2	2	3	1	0	0	0
Washington	738	693	648	508	555	70	50	21	7	14
Oregon	1,200	1,252	1,276	1,422	1,193	245	176	195	141	214
California	9,353	11,656	13,593	13,231	12,340	643	967	1,073	430	707
Western	14,506	17,425	19,580	19,445	18,010	2,028	1,722	1,540	642	1,291
United States	48,827	63,070	66,094	67,204	66,655	16,852	13,707	13,353	12,348	15,658

Table 1.--Turkeys: Farm production and disposition, by States, 1955-59--Continued

State and division	Number raised all breeds					Number lost 1/				
	1955	1956	1957	1958	1959	1955	1956	1957	1958	1959
Maine	154	154	154	119	88	1	1	1	0	0
New Hampshire	140	121	119	123	122	1	1	1	1	1
Vermont	119	115	117	13	61	0	0	0	0	0
Massachusetts	710	711	710	622	551	1	2	2	1	1
Rhode Island	28	45	39	23	26	0	0	0	0	0
Connecticut	211	203	214	222	221	1	1	1	1	1
New York	474	335	209	793	710	3	3	3	3	2
New Jersey	114	211	211	113	166	1	1	1	0	0
Pennsylvania	1,227	1,113	1,321	1,671	1,658	6	3	4	3	3
North Atlantic	2,698	2,202	2,165	3,223	3,521	14	11	13	9	10
Ohio	2,920	3,259	3,203	3,153	3,220	11	10	12	11	11
Indiana	1,928	2,024	2,077	3,190	3,373	2	1	1	2	3
Illinois	89	1,156	1,306	1,126	1,293	2	3	2	2	3
Michigan	2,029	2,029	2,072	1,174	1,240	4	4	4	4	4
Wisconsin	2,021	2,023	2,023	2,117	2,243	3	3	3	3	3
East North Cent.	10,289	10,271	10,920	11,450	13,170	22	20	23	22	22
Minnesota	9,024	9,200	9,242	10,537	13,173	16	20	16	20	20
Iowa	2,459	2,033	2,070	2,824	2,155	5	1	10	11	11
Missouri	2,476	2,111	2,153	3,353	3,829	11	16	12	9	8
North Dakota	21	20	20	21	23	1	1	1	1	1
South Dakota	250	242	261	258	271	1	1	1	0	1
Nebraska	116	95	97	1,039	923	1	2	2	2	2
Kansas	1,200	1,224	1,211	1,218	1,223	3	2	2	2	2
West North Cent.	21,254	21,263	22,426	23,916	26,923	39	33	43	46	42
Delaware	219	215	218	212	217	0	0	0	0	0
Maryland	215	214	216	218	214	2	1	1	1	1
Virginia	2,223	2,122	2,116	2,128	2,126	11	10	13	11	11
West Virginia	215	211	211	214	215	2	2	2	2	2
North Carolina	2,053	2,225	2,225	2,722	2,680	2	2	2	4	3
South Carolina	1,111	1,226	1,192	910	826	4	4	3	3	2
Georgia	216	210	210	217	217	2	2	2	1	1
Florida	164	223	208	226	243	1	1	1	1	1
South Atlantic	11,229	12,219	13,501	12,215	12,229	24	23	24	22	21
Kentucky	213	211	200	212	213	3	3	3	3	2
Tennessee	211	210	217	217	215	1	1	1	2	1
Alabama	212	212	212	210	215	2	2	2	2	2
Mississippi	211	212	213	215	208	3	2	2	2	1
Arkansas	2,257	2,227	2,225	2,228	2,225	3	4	4	4	4
Louisiana	21	21	21	21	21	2	2	2	2	2
Oklahoma	211	212	214	219	209	4	4	4	4	4
Texas	2,122	2,227	2,229	2,221	2,220	14	15	21	16	19
South Central	9,222	9,227	9,212	9,224	9,227	33	34	42	35	35
Kentucky	21	21	21	21	21	0	0	0	0	0
Idaho	120	120	206	214	226	0	0	0	0	0
Wyoming	12	12	12	12	12	0	0	0	0	0
Colorado	2,222	2,222	2,222	2,222	2,222	1	1	1	1	1
New Mexico	21	21	21	21	21	0	0	0	0	0
Arizona	21	21	21	21	21	0	0	0	0	0
Utah	21	21	21	21	21	2	2	2	2	2
Nevada	21	21	21	21	21	0	0	0	0	0
Washington	21	21	21	21	21	5	5	5	3	3
Oregon	21	21	21	21	21	12	12	12	12	10
California	21	21	21	21	21	32	42	44	67	41
Western	10,222	10,222	10,222	10,222	10,222	56	65	66	65	57
United States	67,222	67,222	67,222	67,222	67,222	189	208	235	219	199

1/ Death loss during year of turkeys on hand January 1.

Table 1.--Turkeys: Farm production and disposition, by States, 1955-59--Continued

State and division	Number produced					Pounds produced				
	1955	1956	1957	1958	1959	1955	1956	1957	1958	1959
	Thou.	Thou.	Thou.	Thou.	Thou.	1,000 pounds	1,000 pounds	1,000 pounds	1,000 pounds	1,000 pounds
Yale	258	158	158	119	88	1,535	2,379	2,266	1,987	1,558
New Hampshire	141	120	131	122	121	2,566	2,400	2,489	2,404	2,372
Vermont	116	116	110	73	61	2,162	2,345	2,045	1,387	1,177
Massachusetts	91	56	54	43	42	11,153	10,697	9,180	8,658	8,181
Rhode Island	52	45	39	23	20	920	788	722	421	380
Connecticut	47	26	23	19	20	4,751	5,056	4,404	3,496	3,880
New York	71	93	86	70	76	17,380	16,683	14,508	15,132	14,899
New Jersey	33	28	23	17	16	4,795	4,512	3,877	3,304	3,055
Pennsylvania	2,291	2,110	1,927	1,654	1,647	35,969	33,494	32,759	31,638	31,128
North Atlantic	5,072	4,556	4,135	3,616	3,523	83,231	77,354	72,250	68,427	66,630
Maine	1,347	7,185	2,991	3,142	3,009	46,657	52,553	50,249	53,099	48,745
Indiana	1,347	2,353	2,669	3,188	3,376	30,483	34,696	43,905	57,384	57,392
Illinois	94	1,157	1,208	1,121	1,236	17,433	22,945	24,662	22,368	23,350
Michigan	26	1,086	1,268	1,151	1,245	16,668	18,028	22,709	20,833	22,783
Wisconsin	2,238	2,340	2,639	2,773	4,244	36,433	35,306	46,641	41,041	65,782
East North Cent.	6,683	27,217	30,985	33,778	33,110	147,014	163,528	161,766	194,725	216,062
Minnesota	6,613	9,334	9,385	10,519	13,147	120,256	143,010	147,894	161,993	207,723
Iowa	4,148	5,826	6,290	6,793	8,154	86,291	101,954	108,188	119,557	143,511
Missouri	2,422	3,665	3,151	3,344	3,821	43,776	54,296	57,033	63,536	72,166
North Dakota	54	57	61	76	92	8,652	9,982	11,217	13,066	16,018
South Dakota	168	61	60	76	70	5,594	9,359	11,424	11,470	11,929
Nebraska	815	353	364	1,036	960	15,322	18,584	16,725	20,513	19,404
Kansas	77	938	839	746	823	13,613	15,471	14,766	14,099	15,708
West North Cent.	17,312	21,545	22,431	23,672	28,621	300,904	352,656	367,766	404,230	436,079
Delaware	119	85	86	512	467	8,914	10,519	8,954	5,581	6,117
Maryland	533	456	475	327	251	6,876	5,603	7,030	5,265	4,327
Virginia	5,518	6,452	7,103	6,465	6,749	66,216	73,445	79,554	71,761	67,490
West Virginia	1,634	1,698	1,529	1,453	1,234	18,954	21,226	19,265	17,436	14,932
North Carolina	1,651	1,203	1,384	1,718	1,677	16,768	23,532	31,920	36,237	30,522
South Carolina	1,112	1,212	1,189	927	811	18,793	22,906	21,758	17,521	16,120
Georgia	314	358	394	336	376	5,903	6,767	7,407	6,350	7,558
Florida	164	222	307	255	118	2,673	3,663	4,575	4,183	6,720
South Atlantic	11,245	12,613	13,477	11,993	12,048	147,037	173,661	178,463	158,334	153,766
Kentucky	423	451	397	441	451	8,972	8,158	7,226	8,203	8,640
Tennessee	174	209	195	185	134	3,028	3,616	3,588	3,570	2,412
Alabama	273	260	223	348	313	3,740	4,061	3,725	5,743	5,228
Mississippi	144	160	161	173	207	2,390	2,816	3,010	3,201	3,519
Arkansas	1,554	2,223	2,401	2,464	2,071	23,776	37,569	42,018	43,613	37,693
Louisiana	76	86	75	68	63	1,285	1,368	1,357	1,258	1,215
Oklahoma	76	1,036	1,150	1,115	1,092	12,358	16,161	19,550	19,625	20,311
Texas	3,018	2,342	4,748	3,455	3,411	53,418	78,156	82,224	61,154	59,352
South Central	6,349	8,753	9,170	8,249	7,742	106,967	151,905	162,696	146,367	134,569
Montana	57	81	53	19	25	992	1,478	954	304	504
Idaho	122	171	206	214	240	2,087	3,009	3,687	3,681	4,240
Wyoming	13	14	12	12	12	204	235	216	212	208
Colorado	559	1,151	1,183	1,325	1,265	16,493	22,524	23,424	36,235	25,443
New Mexico	88	98	79	80	83	958	1,050	1,485	1,520	1,635
Arizona	11	112	109	100	103	1,736	2,403	2,136	1,990	2,019
Utah	2,111	2,715	2,663	2,796	2,522	47,368	49,976	51,129	54,243	48,675
Nevada	11	11	6	2	2	174	126	120	40	40
Washington	83	73	662	512	566	15,820	14,465	13,240	10,496	11,829
Oregon	1,520	1,413	1,459	1,551	1,397	27,816	26,847	28,159	29,779	26,962
California	10,164	12,600	14,622	13,594	13,006	191,064	233,100	269,045	255,567	248,414
Western	15,460	19,022	21,054	20,205	19,244	304,782	355,193	393,595	304,131	369,829
United States	65,471	76,569	81,232	79,333	84,294	1,094,735	1,274,297	1,356,043	1,366,220	1,433,055

Table 1.--Turkeys: Farm production and disposition, by States, 1955-59--Continued

State and division	Number consumed in farm household					Pounds consumed in farm household				
	1955	1956	1957	1958	1959	1955	1956	1957	1958	1959
	Thou.	Thou.	Thou.	Thou.	Thou.	1,000 pounds	1,000 pounds	1,000 pounds	1,000 pounds	1,000 pounds
Maine	2	3	2	2	1	27	52	34	33	18
New Hampshire	1	2	2	1	1	18	40	38	20	20
Vermont	3	3	2	2	2	56	61	37	38	39
Massachusetts	6	6	5	4	3	104	113	85	72	54
Rhode Island	1	1	1	1	0	18	18	18	18	0
Connecticut	4	4	3	3	2	70	77	57	55	39
New York	17	18	17	10	8	304	322	306	194	155
New Jersey	5	5	4	3	2	72	83	73	57	37
Pennsylvania	30	30	26	21	16	471	462	442	397	302
North Atlantic	69	72	62	47	35	1,140	1,229	1,080	684	564
Ohio	16	20	22	16	12	274	330	370	270	194
Indiana	11	11	12	10	8	172	186	196	180	135
Illinois	8	10	16	14	11	156	199	304	279	208
Michigan	7	7	9	8	6	121	116	149	145	110
Wisconsin	7	7	7	6	5	116	97	108	89	78
East North Cent.	49	55	66	54	42	819	928	1,127	963	728
Minnesota	11	11	13	12	11	178	185	194	185	174
Iowa	9	8	11	10	8	179	140	189	176	141
Missouri	14	16	17	16	14	252	282	308	304	260
North Dakota	15	15	16	14	11	256	260	280	252	207
South Dakota	8	9	10	10	9	122	131	168	162	136
Nebraska	7	7	7	6	6	132	136	130	119	119
Kansas	8	9	9	9	8	143	149	158	170	149
West North Cent.	72	75	81	77	67	1,258	1,263	1,427	1,358	1,182
Delaware	3	3	2	2	1	29	33	21	22	13
Maryland	11	11	10	8	5	142	152	148	129	86
Virginia	18	18	20	17	14	216	221	224	189	140
West Virginia	7	8	8	7	6	81	100	101	84	73
North Carolina	19	20	21	17	14	338	364	368	299	255
South Carolina	14	16	15	13	11	237	302	293	246	210
Georgia	23	23	24	20	17	432	435	451	378	342
Florida	12	12	11	9	8	196	198	164	148	120
South Atlantic	107	111	112	93	78	1,671	1,685	1,770	1,495	1,239
Kentucky	7	13	13	12	12	216	240	237	223	235
Tennessee	22	22	23	21	21	383	381	423	405	378
Alabama	31	31	31	27	25	425	480	518	446	418
Mississippi	29	32	32	28	21	481	563	598	518	357
Arkansas	20	20	20	17	14	306	338	350	301	255
Louisiana	35	32	34	21	18	592	547	615	388	347
Oklahoma	14	14	15	13	10	234	218	255	229	186
Texas	79	85	82	68	54	1,393	1,530	1,476	1,204	940
South Central	243	249	250	207	175	4,035	4,297	4,472	3,714	3,116
Montana	12	12	12	10	8	178	211	216	194	143
Idaho	5	6	6	5	4	86	106	107	86	70
Wyoming	5	6	3	3	2	78	101	54	53	35
Colorado	11	10	11	10	9	211	194	218	198	178
New Mexico	8	8	9	6	5	137	145	169	114	98
Arizona	8	5	5	4	3	149	98	98	60	59
Utah	6	5	7	5	4	103	92	134	97	77
Nevada	2	2	2	1	1	35	36	40	20	20
Washington	11	11	11	7	6	217	216	220	144	125
Oregon	13	12	12	9	7	238	228	232	173	135
California	32	32	30	24	18	602	592	552	451	325
Western	113	109	108	84	66	2,034	2,019	2,040	1,610	1,266
United States	653	671	661	582	461	10,955	11,541	11,926	10,034	8,197

Table 1.--Turkeys: Farm production and disposition, by States, 1955-59--Continued

State and division	Number sold from farms					Pounds sold from farms				
	1955	1956	1957	1958	1959	1955	1956	1957	1958	1959
	Thou.	Thou.	Thou.	Thou.	Thou.	1,000 pounds	1,000 pounds	1,000 pounds	1,000 pounds	1,000 pounds
Maine	261	135	137	119	91	3,576	2,362	2,362	1,987	1,611
New Hampshire	140	119	130	118	120	2,548	2,380	2,470	2,325	2,352
Vermont	115	111	109	72	61	2,162	2,261	2,027	1,358	1,177
Massachusetts	635	563	541	474	446	11,049	10,584	9,197	8,532	8,073
Rhode Island	52	41	39	22	20	920	770	722	403	360
Connecticut	272	260	230	183	192	4,787	5,018	4,347	3,349	3,725
New York	966	910	799	761	780	17,649	16,289	14,382	15,151	15,132
New Jersey	340	263	213	171	162	4,896	4,445	3,877	3,266	2,981
Pennsylvania	2,273	2,082	1,925	1,657	1,639	35,686	32,063	32,555	31,317	30,977
North Atlantic	5,074	4,487	4,113	3,597	3,511	83,273	76,175	71,879	67,690	66,406
Ohio	2,923	3,150	2,963	3,101	3,032	46,476	51,975	49,778	52,407	49,118
Indiana	1,958	2,038	2,645	3,175	3,377	30,545	34,442	43,162	57,150	57,409
Illinois	886	1,140	1,280	1,109	1,225	17,277	22,686	24,320	22,069	23,152
Michigan	967	1,086	1,366	1,131	1,255	16,729	18,028	22,676	20,471	22,966
Wisconsin	2,171	2,459	2,615	2,617	4,388	35,822	34,160	40,271	38,732	67,890
East North Cent.	6,905	9,073	10,872	11,115	13,229	146,049	161,311	180,297	190,229	226,535
Minnesota	1,554	9,483	9,663	10,172	13,136	127,264	182,245	140,959	159,729	207,549
Iowa	4,426	5,795	6,260	6,648	8,118	85,864	101,412	107,672	117,685	142,877
Missouri	2,431	3,042	3,182	3,328	3,693	43,758	53,539	57,594	63,232	72,410
North Dakota	189	564	619	706	845	8,362	9,757	10,832	12,768	15,886
South Dakota	363	631	653	679	827	5,518	9,213	10,970	11,000	12,488
Nebraska	803	933	886	1,021	989	15,096	18,194	16,391	20,255	19,582
Kansas	722	913	852	732	814	12,324	15,156	14,995	13,835	15,140
West North Cent.	17,168	21,361	22,315	23,598	26,022	296,706	349,316	365,413	396,644	469,932
Delaware	915	863	658	511	464	6,065	10,497	6,975	5,570	6,076
Maryland	529	392	474	321	252	6,224	5,410	7,015	5,168	4,309
Virginia	5,200	6,574	7,080	6,453	6,810	66,240	78,400	79,296	71,628	68,310
West Virginia	1,624	1,687	1,542	1,439	1,236	18,838	21,068	19,429	17,268	14,756
North Carolina	1,031	1,251	1,787	1,693	1,658	18,352	22,766	31,272	29,797	30,176
South Carolina	1,111	1,198	1,178	919	830	18,776	22,642	21,557	17,369	15,653
Georgia	289	332	399	317	352	5,433	6,275	7,501	5,991	7,075
Florida	151	202	281	239	453	3,451	3,333	4,187	3,920	6,945
South Atlantic	11,171	12,399	13,399	11,692	12,065	145,509	170,413	177,232	156,711	153,632
Kentucky	403	428	390	431	471	6,690	7,681	7,090	6,017	6,524
Tennessee	154	189	177	170	112	2,680	3,270	3,257	3,261	2,016
Alabama	242	229	194	231	237	3,315	3,550	3,240	5,452	4,793
Mississippi	113	126	134	145	189	1,876	2,218	2,506	2,701	3,213
Arkansas	1,510	2,191	2,381	2,448	2,083	23,103	37,026	41,668	43,330	37,911
Louisiana	37	46	51	55	48	659	787	923	1,018	926
Oklahoma	722	997	1,131	1,111	1,097	12,057	15,553	19,227	19,378	20,441
Texas	2,939	4,201	4,520	3,269	3,481	52,020	75,618	81,360	57,661	60,569
South Central	6,122	8,405	8,978	7,952	7,740	122,400	145,905	159,295	141,048	133,533
Montana	57	72	48	11	21	541	1,267	756	213	378
Idaho	117	163	205	268	231	2,001	2,885	3,670	3,578	4,078
Wyoming	11	21	9	9	10	110	168	162	159	173
Colorado	868	1,144	1,175	1,309	1,276	16,666	22,194	23,265	25,318	25,268
New Mexico	48	50	71	72	77	821	905	1,335	1,368	1,517
Ariston	83	118	105	97	97	1,544	2,325	2,058	1,910	1,901
Utah	2,799	2,955	2,671	2,822	2,469	47,179	48,892	51,283	54,747	47,652
Nevada	8	5	4	1	1	137	90	80	20	20
Washington	738	730	681	580	584	15,721	14,112	13,620	10,660	12,206
Oregon	1,426	1,370	1,474	1,520	1,396	27,377	26,448	28,448	29,568	26,943
California	10,097	12,153	14,653	13,578	12,914	189,824	224,830	269,615	255,266	246,657
Western	16,318	17,622	21,097	20,167	19,078	322,225	344,676	394,292	383,427	366,790
United States	64,706	75,007	80,767	78,276	84,305	1,019,343	1,247,356	1,348,302	1,338,357	1,411,870

Table 2.--Turkeys: Prices and value of production, by States, 1955-59

State and division	Average annual price per pound ^{1/}					Value of production				
	1955	1956	1957	1958	1959	1955	1956	1957	1958	1959
	Cents	Cents	Cents	Cents	Cents	1,000 dollars	1,000 dollars	1,000 dollars	1,000 dollars	1,000 dollars
Maine	32.8	32.3	33.3	28.3	26.6	1,159	763	761	562	414
New Hampshire	32.3	31.9	32.0	26.5	25.7	829	766	796	637	610
Vermont	33.3	33.0	33.0	27.8	26.5	720	774	675	386	312
Massachusetts	35.3	34.9	34.9	29.3	28.7	3,937	3,733	3,204	2,580	2,346
Rhode Island	36.3	35.9	35.7	36.4	29.6	334	283	298	128	112
Connecticut	36.3	35.9	36.0	31.0	29.6	1,725	1,815	1,585	1,084	1,148
New York	35.1	35.6	32.9	30.2	31.1	6,448	5,939	4,773	4,570	4,634
New Jersey	36.3	36.4	34.5	30.4	30.3	1,836	1,733	1,338	1,070	987
Pennsylvania	37.1	36.8	34.5	31.6	29.0	13,344	11,958	10,574	9,998	9,027
North Atlantic	36.4	35.9	33.7	30.7	29.8	30,332	27,769	24,364	21,015	19,572
Ohio	30.5	28.5	23.5	23.3	23.2	14,291	13,821	11,609	12,372	11,309
Indiana	30.0	28.5	23.0	23.1	23.5	9,145	8,882	10,006	13,256	13,487
Illinois	30.6	27.5	23.5	24.5	24.9	5,334	6,310	5,796	5,840	5,817
Michigan	32.3	28.8	22.9	23.3	22.2	5,364	4,832	5,200	4,854	5,058
Wisconsin	31.5	29.1	24.2	25.0	22.7	11,513	10,274	9,835	10,260	14,933
East North Cent.	30.9	28.2	23.5	23.7	23.2	45,047	44,119	42,645	40,222	50,604
Minnesota	29.2	28.2	22.2	24.1	22.7	31,452	31,469	32,833	39,040	47,153
Iowa	28.6	28.0	22.1	23.4	23.4	26,405	26,508	23,910	27,976	33,582
Missouri	29.4	25.7	22.5	22.5	22.6	12,914	13,954	12,832	14,296	16,314
North Dakota	29.0	25.9	23.7	23.2	21.8	2,587	2,585	2,658	3,032	3,492
South Dakota	30.0	27.8	25.4	23.6	23.2	1,678	2,583	2,902	2,707	2,768
Nebraska	29.3	26.1	23.4	23.0	24.2	4,489	4,880	3,914	4,718	4,696
Kansas	28.4	25.0	22.2	22.4	22.0	3,657	3,868	3,278	3,158	3,368
West North Cent.	29.0	28.0	22.4	21.5	22.9	69,181	91,817	62,321	94,227	111,373
Delaware	34.4	30.7	27.5	27.7	25.9	3,068	3,229	1,912	1,548	1,584
Maryland	33.5	32.9	28.6	26.1	26.2	2,303	1,731	2,011	1,374	1,134
Virginia	29.7	28.4	23.9	24.8	23.0	19,666	20,973	19,013	17,797	15,583
West Virginia	31.4	27.2	24.6	25.7	23.7	5,762	5,773	4,739	4,481	3,539
North Carolina	30.9	29.4	25.0	27.3	26.5	5,781	7,036	7,480	8,255	8,088
South Carolina	30.5	30.4	27.2	28.3	27.2	6,108	6,963	5,918	4,958	4,385
Georgia	31.2	29.4	26.6	24.4	24.7	2,078	1,969	2,118	1,549	1,867
Florida	31.1	30.6	28.4	26.5	26.4	952	1,267	1,482	1,276	2,043
South Atlantic	31.1	29.2	25.3	26.0	24.6	43,756	48,981	43,413	41,236	39,163
Kentucky	29.7	29.7	23.3	23.3	22.4	2,029	2,146	1,094	1,911	1,900
Tennessee	29.7	28.2	25.8	26.0	24.6	893	1,020	862	928	593
Alabama	30.8	30.2	25.9	25.9	24.5	1,227	1,368	865	1,487	1,281
Mississippi	30.4	28.4	24.6	25.7	25.2	778	842	750	823	687
Arkansas	29.0	28.3	23.3	23.2	24.0	6,657	9,505	9,430	10,118	9,046
Louisiana	31.1	30.9	23.3	27.4	26.4	471	492	452	345	380
Oklahoma	29.7	28.3	22.1	22.2	23.4	3,123	3,327	4,321	4,357	4,753
Texas	28.0	28.5	21.8	23.0	22.8	14,957	13,148	17,725	14,065	13,532
South Central	29.4	28.2	22.0	23.2	23.4	30,401	30,351	30,339	34,044	32,322
Montana	30.0	27.2	22.1	23.3	24.7	28	32	230	68	184
Idaho	30.0	28.4	22.9	21.7	25.0	632	74	214	39	1,050
Wyoming	30.0	28.0	23.0	25.0	25.6	63	88	9	53	53
Colorado	30.3	28.4	23.2	24.0	23.6	4,733	5,446	5,200	6,296	6,513
New Mexico	31.4	28.7	26.7	25.1	25.9	361	316	384	422	223
Arizona	30.4	28.4	25.3	25.0	25.6	58	222	310	498	517
Utah	30.0	28.5	22.4	21.9	23.5	13,713	13,238	11,742	11,874	11,439
Nevada	30.2	27.9	22.9	22.0	25.4	5	35	27	9	10
Washington	29.7	28.9	22.3	22.3	23.2	4,433	4,079	3,005	2,347	2,714
Oregon	31.9	30.8	21.7	22.0	22.7	4,763	7,155	6,111	6,551	6,180
California	28.8	28.9	21.9	22.7	24.9	55,032	62,704	58,924	58,014	61,855
Western	30.0	29.9	21.9	22.6	24.6	64,037	65,433	60,230	60,508	60,040
United States	30.2	29.2	23.4	23.9	23.9	269,014	346,512	317,619	328,342	342,972

^{1/} Weighted average of monthly prices per pound received by farmers.

Table 3.--Turkeys: Value of birds consumed in farm household and cash receipts, by States, 1955-59

State and District	Value of turkeys consumed in farm household ^{1/}					Cash receipts from farm sales				
	1955	1956	1957	1958	1959	1955	1956	1957	1958	1959
	dollars	dollars	dollars	dollars	dollars	dollars	dollars	dollars	dollars	dollars
Alaska	1,000	1,000	1,000	1,000	1,000	1,000	1,000	1,000	1,000	1,000
Arizona	1,000	1,000	1,000	1,000	1,000	1,000	1,000	1,000	1,000	1,000
Arkansas	1,000	1,000	1,000	1,000	1,000	1,000	1,000	1,000	1,000	1,000
California	1,000	1,000	1,000	1,000	1,000	1,000	1,000	1,000	1,000	1,000
Colorado	1,000	1,000	1,000	1,000	1,000	1,000	1,000	1,000	1,000	1,000
Connecticut	1,000	1,000	1,000	1,000	1,000	1,000	1,000	1,000	1,000	1,000
Delaware	1,000	1,000	1,000	1,000	1,000	1,000	1,000	1,000	1,000	1,000
District of Columbia	1,000	1,000	1,000	1,000	1,000	1,000	1,000	1,000	1,000	1,000
Florida	1,000	1,000	1,000	1,000	1,000	1,000	1,000	1,000	1,000	1,000
Georgia	1,000	1,000	1,000	1,000	1,000	1,000	1,000	1,000	1,000	1,000
Idaho	1,000	1,000	1,000	1,000	1,000	1,000	1,000	1,000	1,000	1,000
Illinois	1,000	1,000	1,000	1,000	1,000	1,000	1,000	1,000	1,000	1,000
Indiana	1,000	1,000	1,000	1,000	1,000	1,000	1,000	1,000	1,000	1,000
Iowa	1,000	1,000	1,000	1,000	1,000	1,000	1,000	1,000	1,000	1,000
Kansas	1,000	1,000	1,000	1,000	1,000	1,000	1,000	1,000	1,000	1,000
Kentucky	1,000	1,000	1,000	1,000	1,000	1,000	1,000	1,000	1,000	1,000
Louisiana	1,000	1,000	1,000	1,000	1,000	1,000	1,000	1,000	1,000	1,000
Maine	1,000	1,000	1,000	1,000	1,000	1,000	1,000	1,000	1,000	1,000
Maryland	1,000	1,000	1,000	1,000	1,000	1,000	1,000	1,000	1,000	1,000
Massachusetts	1,000	1,000	1,000	1,000	1,000	1,000	1,000	1,000	1,000	1,000
Michigan	1,000	1,000	1,000	1,000	1,000	1,000	1,000	1,000	1,000	1,000
Minnesota	1,000	1,000	1,000	1,000	1,000	1,000	1,000	1,000	1,000	1,000
Mississippi	1,000	1,000	1,000	1,000	1,000	1,000	1,000	1,000	1,000	1,000
Missouri	1,000	1,000	1,000	1,000	1,000	1,000	1,000	1,000	1,000	1,000
Montana	1,000	1,000	1,000	1,000	1,000	1,000	1,000	1,000	1,000	1,000
Nebraska	1,000	1,000	1,000	1,000	1,000	1,000	1,000	1,000	1,000	1,000
Nevada	1,000	1,000	1,000	1,000	1,000	1,000	1,000	1,000	1,000	1,000
New Hampshire	1,000	1,000	1,000	1,000	1,000	1,000	1,000	1,000	1,000	1,000
New Jersey	1,000	1,000	1,000	1,000	1,000	1,000	1,000	1,000	1,000	1,000
New Mexico	1,000	1,000	1,000	1,000	1,000	1,000	1,000	1,000	1,000	1,000
New York	1,000	1,000	1,000	1,000	1,000	1,000	1,000	1,000	1,000	1,000
North Carolina	1,000	1,000	1,000	1,000	1,000	1,000	1,000	1,000	1,000	1,000
North Dakota	1,000	1,000	1,000	1,000	1,000	1,000	1,000	1,000	1,000	1,000
Ohio	1,000	1,000	1,000	1,000	1,000	1,000	1,000	1,000	1,000	1,000
Oklahoma	1,000	1,000	1,000	1,000	1,000	1,000	1,000	1,000	1,000	1,000
Oregon	1,000	1,000	1,000	1,000	1,000	1,000	1,000	1,000	1,000	1,000
Pennsylvania	1,000	1,000	1,000	1,000	1,000	1,000	1,000	1,000	1,000	1,000
Rhode Island	1,000	1,000	1,000	1,000	1,000	1,000	1,000	1,000	1,000	1,000
South Carolina	1,000	1,000	1,000	1,000	1,000	1,000	1,000	1,000	1,000	1,000
South Dakota	1,000	1,000	1,000	1,000	1,000	1,000	1,000	1,000	1,000	1,000
Tennessee	1,000	1,000	1,000	1,000	1,000	1,000	1,000	1,000	1,000	1,000
Texas	1,000	1,000	1,000	1,000	1,000	1,000	1,000	1,000	1,000	1,000
Utah	1,000	1,000	1,000	1,000	1,000	1,000	1,000	1,000	1,000	1,000
Vermont	1,000	1,000	1,000	1,000	1,000	1,000	1,000	1,000	1,000	1,000
Virginia	1,000	1,000	1,000	1,000	1,000	1,000	1,000	1,000	1,000	1,000
Washington	1,000	1,000	1,000	1,000	1,000	1,000	1,000	1,000	1,000	1,000
West Virginia	1,000	1,000	1,000	1,000	1,000	1,000	1,000	1,000	1,000	1,000
Wisconsin	1,000	1,000	1,000	1,000	1,000	1,000	1,000	1,000	1,000	1,000
Wyoming	1,000	1,000	1,000	1,000	1,000	1,000	1,000	1,000	1,000	1,000
Total	1,000	1,000	1,000	1,000	1,000	1,000	1,000	1,000	1,000	1,000

1. Value of birds consumed on farms where produced.

Table 2.—Turkeys: Gross income from farm production, by States, 1955-59

State and division	Gross income from farm production				
	1955	1956	1957	1958	1959
	dollars	dollars	dollars	dollars	dollars
Maine	1,000	1,000	1,000	1,000	1,000
New Hampshire	1,182	760	776	571	434
Vermont	829	772	802	621	609
Massachusetts	739	767	681	391	322
Rhode Island	3,337	3,733	3,240	2,564	2,332
Connecticut	341	282	264	126	112
New York	1,763	1,829	1,586	1,055	1,115
New Jersey	6,661	5,914	4,833	4,635	4,754
Pennsylvania	1,903	1,731	1,363	1,076	975
North Atlantic	13,445	11,969	11,054	10,621	9,071
Ohio	36,719	27,789	24,601	21,062	19,726
Indiana	14,222	13,756	11,785	12,274	11,456
Illinois	9,216	8,665	9,972	13,244	13,523
Michigan	5,335	6,294	5,786	5,475	5,817
Wisconsin	5,442	4,863	5,227	4,804	5,122
East North Central	11,357	9,971	9,772	9,705	15,429
Minnesota	45,682	43,732	49,542	45,542	51,311
Iowa	37,212	37,321	32,768	36,546	47,153
Missouri	26,328	26,403	23,838	27,626	33,466
North Dakota	12,583	13,832	13,028	14,295	16,424
South Dakota	2,571	2,554	2,633	3,006	3,508
Nebraska	1,630	2,573	2,829	2,634	2,929
Kansas	7,462	6,784	3,855	4,686	4,768
West North Central	3,672	3,826	3,394	3,137	3,364
Delaware	68,926	91,329	62,225	93,824	111,612
Maryland	3,666	3,233	1,924	1,599	1,577
Virginia	2,334	1,719	2,048	1,263	1,152
West Virginia	19,737	20,736	19,006	17,811	15,741
North Carolina	5,732	5,763	4,805	4,460	3,562
South Carolina	5,745	6,917	7,910	8,217	8,065
Georgia	6,179	6,975	5,944	6,895	4,369
Florida	2,064	1,973	2,274	1,554	1,832
South Atlantic	686	1,222	1,410	1,241	2,147
Kentucky	45,893	46,558	45,321	41,266	36,445
Tennessee	2,010	2,136	1,709	1,800	1,969
Alabama	964	1,029	966	958	589
Mississippi	1,283	1,298	973	1,531	1,276
Arkansas	788	831	763	627	900
Louisiana	6,555	9,454	9,731	10,123	9,160
Oklahoma	454	479	512	385	335
Texas	3,425	3,872	4,305	4,353	4,827
South Central	14,957	18,921	18,058	13,585	14,024
Montana	16,369	17,963	17,097	13,682	13,100
Idaho	1,000	402	234	95	129
Wyoming	827	760	865	795	1,038
Colorado	58	73	54	53	53
New Mexico	4,614	5,310	5,213	6,268	6,514
Arizona	311	316	401	372	418
Utah	528	688	546	502	522
Nevada	13,712	12,970	11,004	12,611	12,216
Washington	12	33	27	8	10
Oregon	4,527	4,041	3,142	2,409	2,661
California	7,754	7,149	6,223	6,543	6,147
Western	54,642	60,638	59,167	58,047	61,499
United States	67,463	63,017	66,876	67,103	69,307
	26,765	342,401	318,662	322,473	344,599

Table 5.-Turkeys: Average live weight per bird sold from farms, by classes, by States, 1955-59

State and Division	1955				1956			
	Hens	Toms	Flyers	All	Hens	Toms	Flyers	All
	Pounds	Pounds	Pounds	Pounds	Pounds	Pounds	Pounds	Pounds
Maine	13.5	21.7	9.0	13.7	15.2	22.5	8.0	17.5
New Hampshire	14.2	23.4	8.5	18.2	16.4	25.2	8.0	20.0
Vermont	14.5	23.9	8.5	18.8	16.4	25.9	8.6	20.4
Massachusetts	14.2	22.2	8.5	17.4	15.9	23.0	8.5	18.8
Rhode Island	14.2	23.1	8.5	17.7	16.4	22.9	8.0	17.5
Connecticut	14.0	22.7	9.0	17.0	16.2	24.1	8.5	19.3
New York	13.5	23.4	8.0	17.9	14.3	22.8	9.5	17.9
New Jersey	14.3	23.0	8.0	14.4	14.5	25.9	9.0	15.9
Pennsylvania	14.0	22.5	8.3	13.7	14.0	22.4	6.4	15.4
North Atlantic	14.0	22.8	8.4	15.4	14.7	23.1	8.5	17.0
Ohio	14.5	24.0	7.9	15.9	15.1	23.5	7.9	15.5
Indiana	14.2	24.1	8.0	15.5	14.6	24.5	8.4	15.9
Illinois	15.2	27.9	8.0	19.5	15.1	26.3	8.5	19.9
Michigan	14.8	24.0	7.8	17.3	14.4	21.7	8.6	15.6
Wisconsin	14.9	24.2	7.8	16.5	14.2	23.2	9.1	13.9
East North Central	14.7	24.3	7.9	15.5	14.7	23.8	8.1	16.3
Minnesota	14.2	24.8	8.6	15.0	13.7	24.6	8.4	15.0
Iowa	14.2	25.0	8.3	19.4	14.2	25.8	8.1	17.5
Missouri	14.5	24.2	8.2	18.0	14.4	23.0	8.4	17.6
North Dakota	14.3	23.8	8.2	17.1	14.4	25.7	8.7	17.3
South Dakota	14.6	23.0	9.0	15.2	14.4	23.6	8.2	14.6
Nebraska	14.9	25.2	7.7	18.8	15.1	26.5	8.0	19.5
Kansas	14.5	24.0	8.2	17.9	14.4	23.5	8.4	16.4
West North Central	14.3	25.0	8.5	17.4	14.1	24.7	8.3	16.4
Delaware	14.0	23.5	8.5	9.7	13.7	21.4	8.9	10.9
Maryland	14.2	23.2	8.7	12.9	15.1	22.7	8.6	13.8
Virginia	13.8	22.4	8.5	12.0	13.4	20.8	8.6	12.3
West Virginia	13.8	21.5	8.7	11.5	13.6	20.1	8.3	12.5
North Carolina	14.0	23.5	8.5	17.8	14.5	23.9	8.7	18.2
South Carolina	14.0	24.4	8.7	15.9	14.0	25.6	8.5	18.9
Georgia	14.2	24.5	8.3	18.8	14.5	25.4	7.5	18.9
Florida	13.4	23.0	8.2	15.3	13.7	21.6	8.0	16.5
South Atlantic	13.9	23.1	8.6	13.1	13.8	22.7	8.6	13.7
Kentucky	14.0	23.9	8.0	12.6	14.0	23.9	8.1	18.5
Tennessee	14.2	23.7	8.0	17.4	13.8	21.8	8.0	17.3
Alabama	14.5	22.2	8.0	13.7	13.5	21.8	8.0	15.5
Mississippi	14.2	22.4	7.5	15.5	14.9	23.5	8.0	17.6
Arkansas	14.2	22.5	8.2	15.3	14.2	22.3	8.7	16.9
Louisiana	14.4	22.0	8.5	15.9	13.9	22.8	8.5	17.1
Oklahoma	14.4	24.2	8.0	15.7	13.7	22.3	8.7	15.6
Texas	14.5	24.2	7.1	17.7	14.3	23.9	8.3	18.0
South Central	14.4	23.5	7.8	15.7	14.2	23.2	8.5	17.4
Montana	14.0	25.0	7.5	14.8	14.5	23.0	7.7	17.6
Idaho	14.3	25.0	7.5	17.1	14.9	24.2	7.5	17.7
Wyoming	14.5	24.1	8.0	15.7	14.6	23.5	7.0	16.8
Colorado	15.0	25.4	7.3	19.2	15.0	25.4	7.5	19.4
New Mexico	15.0	24.0	7.5	17.1	13.9	23.3	7.0	18.1
Arizona	14.4	23.9	7.5	18.5	14.9	25.4	8.0	19.7
Utah	14.3	25.0	8.8	17.1	14.3	25.7	8.5	18.4
Nevada	15.0	23.0	8.0	17.4	15.3	27.5	9.0	18.0
Washington	15.3	25.4	7.1	19.7	15.4	25.8	8.0	19.6
Oregon	15.2	25.4	7.9	18.3	15.1	25.9	8.2	19.0
California	14.3	23.2	7.5	13.8	14.2	24.9	7.9	18.5
Western	14.5	25.4	8.1	18.5	14.4	25.1	8.0	13.6
United States	14.4	23.5	8.2	15.7	14.3	24.2	8.4	16.6

Table 2.--Turkeys: Average live weight per bird sold from farms, by classes, by States, 1955-59--Con.

State and Division	1957				1958				1959			
	Hens	Toms	Fryers	All	Hens	Toms	Fryers	All	Hens	Toms	Fryers	All
	Pounds	Pounds	Pounds	Pounds	Pounds	Pounds	Pounds	Pounds	Pounds	Pounds	Pounds	Pounds
Maine	14.9	19.9	9.0	15.8	14.9	19.3	9.0	15.7	14.8	20.8	9.0	17.7
New Hampshire	14.9	24.1	9.0	18.0	14.9	21.5	9.5	19.7	15.5	24.5	9.0	19.6
Vermont	14.4	24.0	9.0	18.6	14.5	23.9	9.0	19.0	15.0	24.0	9.0	19.3
Massachusetts	15.0	20.7	9.0	17.0	14.7	21.8	9.5	18.0	14.5	21.9	9.0	18.1
Rhode Island	14.8	23.7	8.5	18.5	14.4	21.7	9.0	18.3	15.2	22.9	---	19.0
Connecticut	15.6	23.9	9.0	18.9	14.9	21.8	9.0	18.3	15.5	23.9	9.5	19.4
New York	15.1	23.5	8.0	18.0	15.3	24.1	9.3	19.4	15.4	24.4	9.0	19.4
New Jersey	14.8	23.8	8.0	18.2	14.5	23.4	8.0	19.1	14.3	22.6	9.0	18.4
Pennsylvania	14.1	22.1	7.9	17.0	15.1	23.4	8.5	18.0	15.3	23.7	8.3	18.0
North Atlantic	14.6	22.3	8.1	17.5	15.0	23.1	8.9	18.3	15.2	23.5	8.6	18.9
Ohio	14.5	23.4	8.3	15.8	14.9	23.7	7.5	15.9	14.3	23.3	8.0	15.2
Indiana	14.4	23.2	7.5	15.3	14.7	23.9	8.1	18.0	14.5	23.2	7.8	17.0
Illinois	14.5	25.2	9.1	19.0	15.9	25.6	9.5	19.9	15.2	24.5	8.5	18.9
Michigan	14.3	23.1	9.0	16.6	14.8	24.4	8.7	18.1	14.7	24.5	8.2	18.3
Wisconsin	14.5	23.0	8.5	15.4	14.5	24.3	9.0	16.8	15.0	24.9	9.2	15.5
East North Cent.	14.6	23.8	8.3	16.6	14.8	24.2	8.5	17.1	14.7	24.0	8.6	16.6
Minnesota	14.2	24.1	8.6	14.9	14.2	23.8	8.8	15.4	13.9	24.3	9.2	15.8
Iowa	14.3	24.1	8.1	17.2	14.2	24.8	8.3	17.6	14.2	25.4	8.1	17.5
Missouri	14.7	24.4	7.1	18.1	14.9	24.7	8.0	19.0	14.9	24.9	9.0	18.6
North Dakota	14.0	23.0	8.0	17.5	13.5	22.7	8.5	18.0	14.0	24.0	9.5	18.8
South Dakota	14.6	24.0	8.5	15.8	13.7	24.0	9.0	16.2	13.9	23.8	8.5	15.1
Nebraska	14.9	25.7	8.0	18.5	14.4	25.0	8.5	19.8	14.9	25.2	7.5	19.8
Kansas	14.8	23.4	8.0	17.6	14.8	23.7	8.1	18.9	14.9	24.3	8.4	18.6
West North Cent.	14.7	24.5	8.7	16.4	14.3	23.4	8.7	16.9	14.2	24.8	8.9	17.0
Delaware	13.4	21.4	8.0	10.6	14.5	21.4	8.7	10.9	12.3	19.1	8.5	13.1
Maryland	14.9	22.3	8.6	14.8	14.3	23.0	8.0	16.1	15.0	21.1	8.7	17.1
Virginia	13.8	19.8	8.2	11.2	14.4	21.2	8.0	11.1	14.4	21.0	7.8	10.0
West Virginia	13.0	19.4	8.9	12.6	14.3	20.6	8.5	12.0	12.2	18.8	8.3	12.1
North Carolina	13.5	23.3	8.9	17.5	14.0	22.9	8.5	17.6	14.2	23.2	8.8	18.2
South Carolina	14.3	24.4	7.5	18.3	14.3	24.0	9.0	18.9	13.9	24.7	8.0	19.1
Georgia	14.9	24.5	8.1	18.8	14.0	24.0	8.1	18.9	15.5	24.9	8.5	20.1
Florida	14.3	20.3	8.0	14.9	12.9	20.6	8.0	16.4	11.1	19.4	7.5	15.0
South Atlantic	13.8	21.3	8.3	13.2	14.2	22.2	8.1	13.2	13.8	21.9	7.9	12.7
Kentucky	14.7	25.8	7.0	18.2	14.4	22.9	9.0	18.6	15.0	24.4	8.2	19.6
Tennessee	13.8	23.8	7.4	18.4	14.7	24.1	9.0	19.3	14.1	22.4	7.9	18.0
Alabama	13.8	21.9	7.0	16.7	13.0	21.2	8.4	16.5	13.4	22.2	7.5	16.7
Mississippi	15.5	22.6	7.0	18.7	14.5	22.7	8.5	18.5	13.8	20.8	9.0	17.0
Arkansas	14.3	23.6	8.3	17.5	14.5	24.0	8.2	17.7	14.9	23.0	8.2	18.2
Louisiana	14.9	21.0	7.0	18.1	14.0	23.0	8.0	18.5	15.5	23.0	8.5	19.3
Oklahoma	14.9	21.0	8.0	17.0	14.0	21.7	8.5	17.6	14.4	23.4	8.3	18.6
Texas	14.0	23.0	8.1	18.0	14.2	23.3	8.7	17.7	14.2	24.1	8.0	17.4
South Central	14.2	23.3	8.1	17.7	14.3	23.2	8.5	17.7	14.5	23.5	8.0	17.9
Montana	14.4	23.1	7.8	18.0	14.9	23.9	8.0	19.4	13.0	22.4	---	18.0
Idaho	14.2	24.3	7.8	17.9	14.4	23.6	7.0	17.2	14.4	24.2	8.4	17.5
Wyoming	13.8	22.2	---	18.0	14.3	21.0	8.0	17.7	13.7	21.0	---	17.3
Colorado	14.7	25.0	9.0	19.8	14.6	25.2	8.4	19.8	14.5	25.4	9.0	19.8
New Mexico	14.7	23.8	8.0	16.8	13.8	24.3	7.5	19.0	14.3	24.9	7.5	19.7
Arizona	14.8	24.8	7.5	19.6	15.0	25.0	8.0	19.9	15.5	26.0	8.5	19.6
Utah	15.0	25.8	8.3	19.2	14.4	24.9	8.6	19.4	14.8	25.5	7.5	19.3
Nevada	15.0	25.0	---	20.0	15.0	25.0	8.5	20.0	15.0	25.0	---	20.5
Washington	15.3	25.8	7.0	20.0	15.3	25.1	8.0	20.5	16.0	26.5	9.0	20.9
Oregon	15.6	25.9	8.0	19.3	14.9	24.8	9.3	19.2	15.0	25.1	7.8	19.3
California	14.2	24.9	7.6	18.4	13.9	24.7	7.6	18.8	13.9	25.3	7.5	19.1
Western	14.4	25.1	7.8	18.7	14.1	24.8	7.7	19.0	14.2	25.3	7.6	19.2
United States	14.3	24.0	8.3	16.7	14.3	24.1	8.4	17.1	14.3	24.4	8.4	17.0

Table 6.—Turkeys: All turkeys and breeder hens in flock January 1, by States, 1964-68

State and Territory	All heavy breed turkeys					Heavy breeder hens				
	1964	1965	1966	1967	1968	1964	1965	1966	1967	1968
Maine	10	10	10	10	10	10	10	10	10	10
New Hampshire	10	10	10	10	10	10	10	10	10	10
Vermont	10	10	10	10	10	10	10	10	10	10
Massachusetts	10	10	10	10	10	10	10	10	10	10
Rhode Island	10	10	10	10	10	10	10	10	10	10
Connecticut	10	10	10	10	10	10	10	10	10	10
New York	10	10	10	10	10	10	10	10	10	10
New Jersey	10	10	10	10	10	10	10	10	10	10
Pennsylvania	10	10	10	10	10	10	10	10	10	10
North Carolina	10	10	10	10	10	10	10	10	10	10
Virginia	10	10	10	10	10	10	10	10	10	10
West Virginia	10	10	10	10	10	10	10	10	10	10
Illinois	10	10	10	10	10	10	10	10	10	10
Michigan	10	10	10	10	10	10	10	10	10	10
Wisconsin	10	10	10	10	10	10	10	10	10	10
East North Cent.	10	10	10	10	10	10	10	10	10	10
Minnesota	10	10	10	10	10	10	10	10	10	10
Iowa	10	10	10	10	10	10	10	10	10	10
Missouri	10	10	10	10	10	10	10	10	10	10
North Dakota	10	10	10	10	10	10	10	10	10	10
South Dakota	10	10	10	10	10	10	10	10	10	10
Nebraska	10	10	10	10	10	10	10	10	10	10
Kansas	10	10	10	10	10	10	10	10	10	10
West North Cent.	10	10	10	10	10	10	10	10	10	10
Delaware	10	10	10	10	10	10	10	10	10	10
Maryland	10	10	10	10	10	10	10	10	10	10
Virginia	10	10	10	10	10	10	10	10	10	10
West Virginia	10	10	10	10	10	10	10	10	10	10
North Carolina	10	10	10	10	10	10	10	10	10	10
South Carolina	10	10	10	10	10	10	10	10	10	10
Georgia	10	10	10	10	10	10	10	10	10	10
Florida	10	10	10	10	10	10	10	10	10	10
South Atlantic	10	10	10	10	10	10	10	10	10	10
Kentucky	10	10	10	10	10	10	10	10	10	10
Tennessee	10	10	10	10	10	10	10	10	10	10
Alabama	10	10	10	10	10	10	10	10	10	10
Mississippi	10	10	10	10	10	10	10	10	10	10
Arkansas	10	10	10	10	10	10	10	10	10	10
Louisiana	10	10	10	10	10	10	10	10	10	10
Oklahoma	10	10	10	10	10	10	10	10	10	10
Texas	10	10	10	10	10	10	10	10	10	10
South Central	10	10	10	10	10	10	10	10	10	10
Montana	10	10	10	10	10	10	10	10	10	10
Idaho	10	10	10	10	10	10	10	10	10	10
Wyoming	10	10	10	10	10	10	10	10	10	10
Utah	10	10	10	10	10	10	10	10	10	10
New Mexico	10	10	10	10	10	10	10	10	10	10
Arizona	10	10	10	10	10	10	10	10	10	10
Utah	10	10	10	10	10	10	10	10	10	10
Nevada	10	10	10	10	10	10	10	10	10	10
Washington	10	10	10	10	10	10	10	10	10	10
Oregon	10	10	10	10	10	10	10	10	10	10
California	10	10	10	10	10	10	10	10	10	10
Western	10	10	10	10	10	10	10	10	10	10
United States	10	10	10	10	10	10	10	10	10	10

Table 1. - Cattle: All breeds and breeder base on June 1, by State, 1950-50--Continued

State and District	All Breed Cattle					Light Breeder Base					
	1950	1951	1952	1953	1954	1955	1956	1957	1958	1959	1960
Alabama											
Alaska											
Arizona											
Arkansas											
California											
Colorado											
Connecticut											
Delaware											
District of Columbia											
Florida											
Georgia											
Idaho											
Illinois											
Indiana											
Iowa											
Kansas											
Kentucky											
Louisiana											
Maine											
Maryland											
Massachusetts											
Michigan											
Minnesota											
Mississippi											
Missouri											
Montana											
Nebraska											
Nevada											
New Hampshire											
New Jersey											
New Mexico											
New York											
North Carolina											
North Dakota											
Ohio											
Oklahoma											
Oregon											
Pennsylvania											
Rhode Island											
South Carolina											
South Dakota											
Tennessee											
Texas											
Utah											
Vermont											
Virginia											
Washington											
West Virginia											
Wisconsin											
Wyoming											
Total	187	187	187	187	187	187	187	187	187	187	187

Sl. No.	Name of the Institution	No. of Keys					No. of Keys				
		1980	1981	1982	1983	1984	1985	1986	1987	1988	
101	Al. V. Arunachalam	11	11	11	11	11	11	11	11	11	
102	Al. V. Prasad	11	11	11	11	11	11	11	11	11	
103	Al. V. Srinivasan	11	11	11	11	11	11	11	11	11	
104	Al. V. Subramanian	11	11	11	11	11	11	11	11	11	
105	Al. V. Suresh	11	11	11	11	11	11	11	11	11	
106	Al. V. Venkatesh	11	11	11	11	11	11	11	11	11	
107	Al. V. Venkateswari	11	11	11	11	11	11	11	11	11	
108	Al. V. Venkateswari	11	11	11	11	11	11	11	11	11	
109	Al. V. Venkateswari	11	11	11	11	11	11	11	11	11	
110	Al. V. Venkateswari	11	11	11	11	11	11	11	11	11	
111	Al. V. Venkateswari	11	11	11	11	11	11	11	11	11	
112	Al. V. Venkateswari	11	11	11	11	11	11	11	11	11	
113	Al. V. Venkateswari	11	11	11	11	11	11	11	11	11	
114	Al. V. Venkateswari	11	11	11	11	11	11	11	11	11	
115	Al. V. Venkateswari	11	11	11	11	11	11	11	11	11	
116	Al. V. Venkateswari	11	11	11	11	11	11	11	11	11	
117	Al. V. Venkateswari	11	11	11	11	11	11	11	11	11	
118	Al. V. Venkateswari	11	11	11	11	11	11	11	11	11	
119	Al. V. Venkateswari	11	11	11	11	11	11	11	11	11	
120	Al. V. Venkateswari	11	11	11	11	11	11	11	11	11	
121	Al. V. Venkateswari	11	11	11	11	11	11	11	11	11	
122	Al. V. Venkateswari	11	11	11	11	11	11	11	11	11	
123	Al. V. Venkateswari	11	11	11	11	11	11	11	11	11	
124	Al. V. Venkateswari	11	11	11	11	11	11	11	11	11	
125	Al. V. Venkateswari	11	11	11	11	11	11	11	11	11	
126	Al. V. Venkateswari	11	11	11	11	11	11	11	11	11	
127	Al. V. Venkateswari	11	11	11	11	11	11	11	11	11	
128	Al. V. Venkateswari	11	11	11	11	11	11	11	11	11	
129	Al. V. Venkateswari	11	11	11	11	11	11	11	11	11	
130	Al. V. Venkateswari	11	11	11	11	11	11	11	11	11	
131	Al. V. Venkateswari	11	11	11	11	11	11	11	11	11	
132	Al. V. Venkateswari	11	11	11	11	11	11	11	11	11	
133	Al. V. Venkateswari	11	11	11	11	11	11	11	11	11	
134	Al. V. Venkateswari	11	11	11	11	11	11	11	11	11	
135	Al. V. Venkateswari	11	11	11	11	11	11	11	11	11	
136	Al. V. Venkateswari	11	11	11	11	11	11	11	11	11	
137	Al. V. Venkateswari	11	11	11	11	11	11	11	11	11	
138	Al. V. Venkateswari	11	11	11	11	11	11	11	11	11	
139	Al. V. Venkateswari	11	11	11	11	11	11	11	11	11	
140	Al. V. Venkateswari	11	11	11	11	11	11	11	11	11	
141	Al. V. Venkateswari	11	11	11	11	11	11	11	11	11	
142	Al. V. Venkateswari	11	11	11	11	11	11	11	11	11	
143	Al. V. Venkateswari	11	11	11	11	11	11	11	11	11	
144	Al. V. Venkateswari	11	11	11	11	11	11	11	11	11	
145	Al. V. Venkateswari	11	11	11	11	11	11	11	11	11	
146	Al. V. Venkateswari	11	11	11	11	11	11	11	11	11	
147	Al. V. Venkateswari	11	11	11	11	11	11	11	11	11	
148	Al. V. Venkateswari	11	11	11	11	11	11	11	11	11	
149	Al. V. Venkateswari	11	11	11	11	11	11	11	11	11	
150	Al. V. Venkateswari	11	11	11	11	11	11	11	11	11	

Table 11.—Duckys: Value per head and total value on farms January 1, by States, 1936-40

State and division	Value per head					Total value				
	1936	1937	1938	1939	1940	1936	1937	1938	1939	1940
	Dollars	Dollars	Dollars	Dollars	Dollars	\$1,000	\$1,000	\$1,000	\$1,000	\$1,000
Maine	6.80	6.10	6.00	6.00	6.00	27.00	24.00	24.00	24.00	24.00
New Hampshire	7.00	6.00	6.00	6.00	6.00	28.00	24.00	24.00	24.00	24.00
Vermont	7.00	6.00	6.00	6.00	6.00	28.00	24.00	24.00	24.00	24.00
Massachusetts	7.00	6.00	6.00	6.00	6.00	28.00	24.00	24.00	24.00	24.00
Rhode Island	7.00	6.00	6.00	6.00	6.00	28.00	24.00	24.00	24.00	24.00
Connecticut	7.00	6.00	6.00	6.00	6.00	28.00	24.00	24.00	24.00	24.00
New York	6.00	6.00	6.00	6.00	6.00	24.00	24.00	24.00	24.00	24.00
New Jersey	6.00	6.00	6.00	6.00	6.00	24.00	24.00	24.00	24.00	24.00
Pennsylvania	6.00	6.00	6.00	6.00	6.00	24.00	24.00	24.00	24.00	24.00
North Atlantic	6.00	6.00	6.00	6.00	6.00	24.00	24.00	24.00	24.00	24.00
Ohio	6.00	6.00	6.00	6.00	6.00	24.00	24.00	24.00	24.00	24.00
Indiana	6.00	6.00	6.00	6.00	6.00	24.00	24.00	24.00	24.00	24.00
Illinois	6.00	6.00	6.00	6.00	6.00	24.00	24.00	24.00	24.00	24.00
Michigan	6.00	6.00	6.00	6.00	6.00	24.00	24.00	24.00	24.00	24.00
Wisconsin	6.00	6.00	6.00	6.00	6.00	24.00	24.00	24.00	24.00	24.00
East North Cent.	6.00	6.00	6.00	6.00	6.00	24.00	24.00	24.00	24.00	24.00
Minnesota	6.00	6.00	6.00	6.00	6.00	24.00	24.00	24.00	24.00	24.00
Iowa	6.00	6.00	6.00	6.00	6.00	24.00	24.00	24.00	24.00	24.00
Missouri	6.00	6.00	6.00	6.00	6.00	24.00	24.00	24.00	24.00	24.00
North Dakota	6.00	6.00	6.00	6.00	6.00	24.00	24.00	24.00	24.00	24.00
South Dakota	6.00	6.00	6.00	6.00	6.00	24.00	24.00	24.00	24.00	24.00
Nebraska	6.00	6.00	6.00	6.00	6.00	24.00	24.00	24.00	24.00	24.00
Kansas	6.00	6.00	6.00	6.00	6.00	24.00	24.00	24.00	24.00	24.00
West North Cent.	6.00	6.00	6.00	6.00	6.00	24.00	24.00	24.00	24.00	24.00
Delaware	6.00	6.00	6.00	6.00	6.00	24.00	24.00	24.00	24.00	24.00
Maryland	6.00	6.00	6.00	6.00	6.00	24.00	24.00	24.00	24.00	24.00
Virginia	6.00	6.00	6.00	6.00	6.00	24.00	24.00	24.00	24.00	24.00
West Virginia	6.00	6.00	6.00	6.00	6.00	24.00	24.00	24.00	24.00	24.00
North Carolina	6.00	6.00	6.00	6.00	6.00	24.00	24.00	24.00	24.00	24.00
South Carolina	6.00	6.00	6.00	6.00	6.00	24.00	24.00	24.00	24.00	24.00
Georgia	6.00	6.00	6.00	6.00	6.00	24.00	24.00	24.00	24.00	24.00
Florida	6.00	6.00	6.00	6.00	6.00	24.00	24.00	24.00	24.00	24.00
South Atlantic	6.00	6.00	6.00	6.00	6.00	24.00	24.00	24.00	24.00	24.00
Kentucky	6.00	6.00	6.00	6.00	6.00	24.00	24.00	24.00	24.00	24.00
Tennessee	6.00	6.00	6.00	6.00	6.00	24.00	24.00	24.00	24.00	24.00
Alabama	6.00	6.00	6.00	6.00	6.00	24.00	24.00	24.00	24.00	24.00
Mississippi	6.00	6.00	6.00	6.00	6.00	24.00	24.00	24.00	24.00	24.00
Arkansas	6.00	6.00	6.00	6.00	6.00	24.00	24.00	24.00	24.00	24.00
Louisiana	6.00	6.00	6.00	6.00	6.00	24.00	24.00	24.00	24.00	24.00
Oklahoma	6.00	6.00	6.00	6.00	6.00	24.00	24.00	24.00	24.00	24.00
Texas	6.00	6.00	6.00	6.00	6.00	24.00	24.00	24.00	24.00	24.00
South Central	6.00	6.00	6.00	6.00	6.00	24.00	24.00	24.00	24.00	24.00
Montana	6.00	6.00	6.00	6.00	6.00	24.00	24.00	24.00	24.00	24.00
Wyoming	6.00	6.00	6.00	6.00	6.00	24.00	24.00	24.00	24.00	24.00
Idaho	6.00	6.00	6.00	6.00	6.00	24.00	24.00	24.00	24.00	24.00
Utah	6.00	6.00	6.00	6.00	6.00	24.00	24.00	24.00	24.00	24.00
New Mexico	6.00	6.00	6.00	6.00	6.00	24.00	24.00	24.00	24.00	24.00
Arizona	6.00	6.00	6.00	6.00	6.00	24.00	24.00	24.00	24.00	24.00
Nevada	6.00	6.00	6.00	6.00	6.00	24.00	24.00	24.00	24.00	24.00
Pacific States	6.00	6.00	6.00	6.00	6.00	24.00	24.00	24.00	24.00	24.00
Washington	6.00	6.00	6.00	6.00	6.00	24.00	24.00	24.00	24.00	24.00
Oregon	6.00	6.00	6.00	6.00	6.00	24.00	24.00	24.00	24.00	24.00
California	6.00	6.00	6.00	6.00	6.00	24.00	24.00	24.00	24.00	24.00
Western	6.00	6.00	6.00	6.00	6.00	24.00	24.00	24.00	24.00	24.00
United States	6.00	6.00	6.00	6.00	6.00	24.00	24.00	24.00	24.00	24.00

Table 8.--Percentage death loss of turkeys

Geographic regions	Young turkeys lost as a percent of total number bought and home hatched				
	1955	1956	1957	1958	1959
	Percent	Percent	Percent	Percent	Percent
North Atlantic	9	7	7	7	7
East North Central...	10	10	10	9	9
West North Central...	10	10	10	9	9
South Atlantic	12	10	9	9	8
South Central	9	9	12	9	9
Western	8	8	8	8	8
United States	9.8	9.1	9.7	8.5	8.6

Geographic regions	Breeding stock lost as a percent of brooders on hand January 1				
	1955	1956	1957	1958	1959
	Percent	Percent	Percent	Percent	Percent
North Atlantic	7	5	7	6	5
East North Central...	7	6	7	6	6
West North Central...	6	8	6	6	6
South Atlantic	6	6	5	5	5
South Central	6	6	7	7	5
Western	6	6	5	7	5
United States	6.2	6.3	6.0	6.6	5.4



Growth Through Agricultural Progress

END