



AgEcon SEARCH

RESEARCH IN AGRICULTURAL & APPLIED ECONOMICS

The World's Largest Open Access Agricultural & Applied Economics Digital Library

This document is discoverable and free to researchers across the globe due to the work of AgEcon Search.

Help ensure our sustainability.

Give to AgEcon Search

AgEcon Search

<http://ageconsearch.umn.edu>

aesearch@umn.edu

*Papers downloaded from **AgEcon Search** may be used for non-commercial purposes and personal study only. No other use, including posting to another Internet site, is permitted without permission from the copyright owner (not AgEcon Search), or as allowed under the provisions of Fair Use, U.S. Copyright Act, Title 17 U.S.C.*

No endorsement of AgEcon Search or its fundraising activities by the author(s) of the following work or their employer(s) is intended or implied.

SB 223 (1959)

USDA STATISTICAL BULLETINS

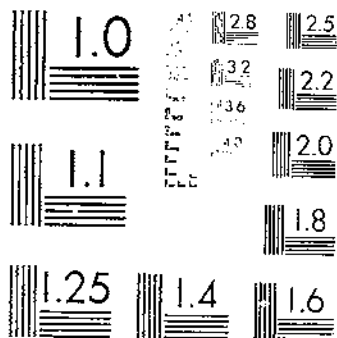
UPDATA

FRESH FRUIT AND VEGETABLE PRICES 1957

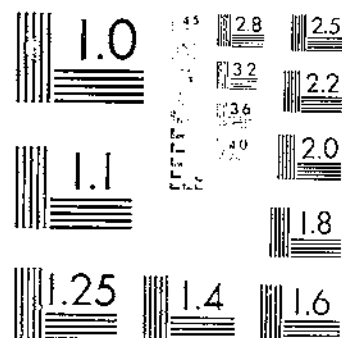
HEFLIN, L.G.

12071

START



MICROCOPY RESOLUTION TEST CHART
NATIONAL BUREAU OF STANDARDS-1963-A



MICROCOPY RESOLUTION TEST CHART
NATIONAL BUREAU OF STANDARDS-1963-A

#223

REFERENCE
DO NOT LOAN

FRESH FRUIT and VEGETABLE PRICES • 1957



WHOLESALE
CHICAGO AND
NEW YORK CITY

AUCTION
CHICAGO AND
NEW YORK CITY

F.O.B.
LEADING
SHIPPING POINTS

STATISTICAL BULLETIN No. 223

UNITED STATES DEPARTMENT OF AGRICULTURE
Agricultural Marketing Service
Fruit and Vegetable Division
Washington, D. C. APRIL 1958

CONTENTS

	<u>Page</u>
Introduction	1
Table 1.--Wholesale prices of specified fruits and vegetables at New York City and Chicago, each month by market, origin and description, 1957	3
<u>Berries</u>	
Blueberries	3
Cranberries	3
Raspberries	3
Strawberries	3
<u>Citrus Fruits</u>	
Limes	4
<u>Other Fruits</u>	
Apples	4
Avocados	4
Cherries	4
Peaches	5
Pears	6
Prunes, Fresh	6
<u>Miscellaneous Melons</u>	
Cantaloups	6
Honeydew melons	6
Watermelons	7
<u>Vegetables</u>	
Artichokes, Globe type	7
Asparagus	7
Beans, Lima	7
Beans, Snap, Green	7
Beets	8
Broccoli	8
Brussels Sprouts	8
Cabbage	8
Carrots	9
Cauliflower	9
Celery	10
Corn, Green	10
Cucumbers	10
Eggplant	15
Endive-Chicory	11
Escarole	11
Kale	11
Lettuce	11
Mushrooms	11
Onions	11
Peas, Green	12
Peppers, Green	12
Potatoes, White	13
Radishes	13
Rhubarb	13
Shallots	14
Spinach	14
Sweetpotatoes	14
Tomatoes	14

Table 2.--Auction prices of specified citrus and deciduous fruits in New York City and Chicago, each month, by market origin and description, 1957

<u>Citrus Fruits</u>	
Grapefruit	16
Lemons	16
Oranges	16
<u>Deciduous Fruits</u>	
Apples	16
Apricots	16
Cherries	17
Grapes	17

Table 2.--Continued

<u>Deciduous Fruits--Continued</u>	
Nectarines	18
Peaches	18
Pears	18
Pineapples	19
Plums	19
Prunes, Fresh	19

Table 3.--Average prices of specified fruits and vegetables at leading shipping points, each month by description of sale, 1957

<u>Berries</u>	
Blueberries	20
Raspberries	20
Strawberries	20
<u>Other Fruits</u>	
Apples	21
Apricots	23
Cherries	24
Grapes	24
Nectarines	24
Peaches	25
Pears	28
Plums	28
Prunes, Fresh	29
<u>Melons</u>	
Cantaloups	29
Honeydews	30
Miscellaneous Melons	30
Watermelons	30

<u>Vegetable-</u>	
Asparagus	31
Beans, Lima	31
Beans, Snap, Green	31
Beans, Snap, Wax	32
Brussels Sprouts	32
Cabbage	32
Carrots	33
Cauliflower	34
Celery	34
Chinese Cabbage	35
Corn, Green	35
Cucumbers	35
Eggplant	36
Endive	36
Escarole	36
Lettuce	36
Onions	37
Peppers, Green	38
Potatoes, White	39
Radishes	43
Spinach	43
Sweetpotatoes	43
Tomatoes	44

Table 4.--Computed wholesale values per carlot of domestic fresh fruits and vegetables, New York City and Chicago, by months, 1956-1957

Table 5.--Index of wholesale prices of fresh fruits and vegetables at New York City and Chicago, by months, 1938-1957

FRESH FRUIT AND VEGETABLE PRICES - 1957

<u>WHOLESALE</u>	<u>AUCTION</u>	<u>F.O.B.</u>
CHICAGO AND NEW YORK CITY	CHICAGO AND NEW YORK CITY	LEADING SHIPPING POINTS

Prepared by Leo G. Heflin, Fruit and Vegetable Division,
Market News Branch, Agricultural Marketing Service

INTRODUCTION

The prices listed in this report represent sales in wholesale lots of fresh fruits and vegetables at New York City, Chicago, and at important shipping points where Market News field stations were located during 1957. The report also includes monthly average auction prices for important fresh fruits, compiled by the Statistical and Historical Research Branch, Agricultural Marketing Service, from information contained in the New York Daily Fruit Reporter and the Chicago Daily Fruit and Vegetable Reporter.

The wholesale prices for private sales at New York and Chicago are simple averages of representative prices for each Tuesday in the month. The local market reporters estimate volume of sale at different price levels, taking into consideration quality, condition, and other factors. These wholesale prices in most cases represent private sales in quantities of less than carload lots. They generally represent sales made by the first seller on the wholesale market. In a few instances, prices representing sales in carlots or sales at auction are reported, but these are indicated in the body of the report. PRICES ARE FOR STOCK OF GENERALLY GOOD MERCHANTABLE QUALITY AND CONDITION - U.S. NO. 1 GRADE WHEN QUOTED.

The prices reported for important shipping points or shipping areas are simple averages of the mid-points of the daily range throughout the year as reported by the local Market News offices. They refer to sales in straight or mixed carloads or truckloads, unless otherwise noted. An average shipping point price for a month generally is shown only when there were quotations for six or more days during that month.

"Sales f.o.b." refer to transactions in which the buyer assumes responsibility for the commodity at shipping point. "Delivered sales, shipping point basis", refer to transactions in which the seller assumes responsibility for delivery to the market. Prices for the latter group of transactions are adjusted to a shipping point basis by making appropriate deductions for transportation and protective services.

The index of wholesale prices for fruits and vegetables at New York and Chicago was computed by weighting the monthly prices shown in this report by the monthly carlot and trucklot unloads, adjusted to carlot equivalents, reported in New York and Chicago. The index was adjusted for seasonal variation based on experience in the base period, 1935-39. The index of wholesale prices of fruits and vegetables at New York and Chicago was computed from prices for the most important fruits and vegetables. The index numbers should be considered as representative of prices of fruits and vegetables on the markets at New York and Chicago. They should not be considered as exact weighted indices. They do not include prices for produce sold in other sections of the country, nor do they include products sold on these markets but not included in this price summary.

A table of estimated value per carlot of fresh fruits and vegetables 1956 to 1957 by months at New York and Chicago is included in this report. These estimates are intended to indicate a comparative trend rather than an absolute value per car. Therefore, uniform loadings (prewar basis) per carload were used over the entire period in computing relative values.

- - - - -

Table 1.--Wholesale prices of specified fruits and vegetables at New York City and Chicago, each month by market, origin, and description, 1957 1/

BERRIES

Market, Origin and description	Jan.	Feb.	Mar.	Apr.	May	June	July	Aug.	Sept.	Oct.	Nov.	Dec.
- - - Dollars Per Unit - - -												
<u>Blueberries</u>												
<u>New York:</u>												
<u>Cultivated, per pint--</u>												
Del.	-	-	-	-	-	.34	-	-	-	-	-	-
Md.	-	-	-	-	-	.28	-	-	-	-	-	-
N.J.	-	-	-	-	-	.34	.29	.32	.38	-	-	-
N.C.	-	-	-	-	-	.40	-	-	-	-	-	-
<u>Chicago:</u>												
<u>Cultivated per pint--</u>												
Ill.	-	-	-	-	-	.34	.35	-	-	-	-	-
Mich.	-	-	-	-	-	-	.30	.28	.31	.35	-	-
N.J.	-	-	-	-	-	.36	.31	-	-	-	-	-
S.C.	-	-	-	-	-	.38	-	-	-	-	-	-
<u>Cranberries</u>												
<u>New York:</u>												
<u>24-1-lb. film bags, carton--</u>												
Mass., early varieties	-	-	-	-	-	-	-	4.42	4.38	4.12	-	-
late Howe	4.00	-	-	-	-	-	-	-	-	3.95	4.70	-
N.Y., early varieties	-	-	-	-	-	-	-	-	-	4.25	4.09	3.75
<u>Chicago:</u>												
<u>24-1-lb. film bags, carton--</u>												
Mass., early varieties	-	-	-	-	-	-	-	4.28	3.78	3.65	-	-
Howe	4.04	-	-	-	-	-	-	-	-	4.13	4.89	-
Wis., Howe	-	-	-	-	-	-	-	-	-	4.13	4.72	-
Wis., Searle	-	-	-	-	-	-	-	-	-	3.70	3.79	4.90
<u>Raspberries</u>												
<u>New York:</u>												
Calif., Reds, 1/2-pint	-	-	-	-	-	.42	.37	-	-	.21	.40	.57
N.J., Reds, pint	-	-	-	-	-	.39	.33	-	-	-	-	-
N.Y., Reds, pint	-	-	-	-	-	-	.37	-	-	-	-	-
<u>Chicago:</u>												
Calif., Red, 12-1/2 pint tray	-	-	-	-	-	3.25	4.25	-	-	-	-	-
Ill., Red, 18-1/2 pint flats ...	-	-	-	-	-	4.18	4.50	-	-	-	-	-
Mich., Red, 24 pint crate	-	-	-	-	-	-	5.44	-	-	-	-	-
Black, 24 pint crate ..	-	-	-	-	-	-	4.60	-	-	-	-	-
<u>Strawberries</u>												
<u>New York:</u>												
<u>Pint--</u>												
Calif., various varieties	-	-	-	.47	.38	.28	.32	.35	.34	.43	.54	.72
Fla., Missionary and No. 90..	.31	.32	.28*	-	-	-	-	-	-	-	-	.76
La., Klondike and Klommore..	-	-	.39	.35	.25	-	-	-	-	-	-	-
<u>Quart--</u>												
N.J., various varieties	-	-	-	-	.50	.40	-	-	-	-	-	-
N.Y., L.I. various varieties ..	-	-	-	-	-	.36	-	-	-	-	-	-
N.Y., Oswego Sect. var. varie..	-	-	-	-	-	.41	-	-	-	-	-	-
Va., various varieties	-	-	-	-	.37	-	-	-	-	-	-	-
<u>Chicago:</u>												
<u>24-quart crate--</u>												
Ill., Blakemore	-	-	-	-	4.50*	-	-	-	-	-	-	-
<u>16-quart crate--</u>												
Ill., Blakemore	-	-	-	-	5.62	4.25	-	-	-	-	-	-
Ind., Blakemore	-	-	-	-	6.00	6.25	-	-	-	-	-	-
Ky., Robinson	-	-	-	-	5.25*	-	-	-	-	-	-	-
Mich., Premier	-	-	-	-	-	4.78	-	-	-	-	-	-
Mich., Robinson	-	-	-	-	-	4.12	5.25	-	-	-	-	-
Tenn., Blakemore	-	-	-	-	4.00	-	-	-	-	-	-	-
<u>24-pint crate--</u>												
La., Klondike and Klommore..	-	-	8.91	7.96	4.25	-	-	-	-	-	-	-
<u>12-pint crate--</u>												
Calif., various varieties	-	-	-	5.17	2.87	2.95	3.06	3.46	2.91	3.58	4.08	-
<u>Pint--</u>												
Fla., Missionary and No. 90..	.33	.32	-	-	-	-	-	-	-	-	-	-

1/ Prices shown are simple averages of representative prices for Tuesday of each week during the month.
* Fair quality.

Table 1.--Continued

CITRUS FRUITS 2/

Market, Origin and description	Jan.	Feb.	Mar.	Apr.	May	June	July	Aug.	Sept.	Oct.	Nov.	Dec.
- - - Dollars Per Unit - - -												

Limes

<u>New York:</u>												
<u>10-lb. flats--</u>												
Fla., Persian, Var. sizes	2.41	3.38	3.74	4.40	2.18	1.43	1.14	1.19	2.00	1.60	1.33	1.65
<u>Chicago:</u>												
<u>10-lb. flats--</u>												
Fla., Persian, Var. sizes	2.33	2.54	3.89	4.04	1.90	1.24	1.20	1.20	1.58	1.41	1.30	1.84

OTHER FRUITS

Apples 3/

<u>New York:</u>												
<u>Eastern box or bushel basket</u>												
<u>2 1/2-in up unless stated--</u>												
N.J., Starrs, 3/4-bushel bskt...	-	-	-	-	-	-	3.06	-	-	-	-	-
N.Y., Cortland	2.66	2.75	-	-	-	-	-	-	1.97	1.58	1.78	1.78
Delicious	4.38	4.71	4.75	4.75	-	-	-	-	3.38	3.03	2.44	2.70
Early McIntosh	-	-	-	-	-	-	-	4.00	-	-	-	-
Early McIntosh U.S.Fancy.	-	-	-	-	-	-	-	5.19	-	-	-	-
Fall Pippins	-	-	-	-	-	-	-	-	1.75	-	-	-
McIntosh	3.25	3.25	3.25	3.12	-	-	-	-	2.16	1.72	1.91	2.15
McIntosh	-	-	4.50#	4.62#	-	-	-	-	-	-	-	-
McIntosh, Orchard run	-	-	-	-	-	5.50	-	-	-	-	-	-
McIntosh, 96's cell pack..	-	-	-	5.60	5.88	-	-	-	-	-	-	-
Miltons	-	-	-	-	-	-	-	2.50	-	-	-	-
R.I. Greening	3.32	-	-	-	-	-	-	-	-	1.88	2.12	2.20
William Red	-	-	-	-	-	-	4.62	4.62	-	-	-	-
Va., Albemarle Pippins	-	-	-	-	4.25	-	-	-	-	-	-	-
<u>Chicago:</u>												
<u>Bushel basket, 2 1/2-in. up</u>												
<u>unless stated--</u>												
Ill., Golden Delicious	-	-	-	-	5.20	-	-	-	-	-	-	-
Jonathan, 2 1/2-in up	-	-	-	-	-	-	-	4.88	3.56	-	-	-
Transparent, 2-in. up	-	-	-	-	-	4.75	4.00	-	-	-	-	-
Wealthy, 2 1/2-in. up	-	-	-	-	-	-	3.12	2.75	-	-	-	-
William Red, 2 1/2-in. up ..	-	-	-	-	-	-	6.00	-	-	-	-	-
Willow Twig	-	-	4.00	4.17	4.15	4.32	4.78	-	-	-	-	-
Mich., Delicious	-	-	-	-	-	-	-	-	-	2.91	2.82	3.02
Duchess, 2 1/2-in. up	-	-	-	-	-	-	3.00	2.12	-	-	-	-
Golden Delicious	-	-	-	-	5.25	-	-	-	-	-	-	-
Jonathan, 2 1/2-in. up	3.03	3.65	3.94	4.00	-	-	-	-	-	2.24	2.32	2.61
McIntosh	3.00	3.24	2.75*	-	-	-	-	4.50	3.00	2.56	2.76	2.69
Northern Spy	-	-	-	-	3.25	-	-	-	-	-	-	-
Red Delicious	4.65	4.71	4.92	5.26	-	-	-	-	-	3.46	3.22	3.28
Starkes	-	-	-	-	3.00	-	-	-	-	-	-	-
Transparent, 2-in. up	-	-	-	-	-	-	3.58	-	-	-	-	-
Wealthy	-	-	-	-	-	-	-	2.38	2.37	-	-	-
Wis., N.W. Greening	-	-	-	-	-	-	-	2.94	2.82	-	-	-

Avocados

<u>New York:</u>												
<u>Var. varie. and sizes, flat--</u>												
Calif.,	-	5.05	6.04	5.87	5.90	6.13	5.03	3.44	-	-	-	-
Fla.,	2.49	2.65	4.32	-	-	-	2.67	2.34	1.88	1.89	1.62	1.55
<u>Chicago:</u>												
<u>Var. varie. and sizes flat--</u>												
Calif.,	-	5.00	5.62	5.84	5.81	5.92	5.09	4.50	-	-	-	-
Fla.,	2.19	2.70	3.97	-	-	-	3.00	2.42	1.79	1.68	1.53	1.33

Cherries 3/

<u>New York:</u>												
<u>12-quart basket--</u>												
N.J., Red Sour	-	-	-	-	-	3.06	3.00	-	-	-	-	-
N.Y., Black Sour, 4-qt. basket.	-	-	-	-	-	-	1.55	-	-	-	-	-
Black Sour	-	-	-	-	-	-	4.06	-	-	-	-	-
Red Sour	-	-	-	-	-	-	3.36	-	-	-	-	-

2/ For oranges, grapefruit, and lemon prices see Table 2.
3/ For Western States see Table 2.

Controlled atmosphere storage.
* Fair quality.

Table 1.--Continued

OTHER FRUITS--CONTINUED

Market, Origin and description	Jan.	Feb.	Mar.	Apr.	May	June	July	Aug.	Sept.	Oct.	Nov.	Dec.
-- - Dollars Per Unit - - -												
<u>Cherries--Continued</u>												
<u>Chicago:</u>												
<u>16-quart crates--</u>												
Mich., Sour varieties	-	-	-	-	-	-	4.12	-	-	-	-	-
Mich., Sweet varieties	-	-	-	-	-	-	6.75	-	-	-	-	-
<u>Peaches ^{3/}</u>												
<u>New York:</u>												
<u>1/2-bushel baskets--</u>												
Ga., Coronets, 2-in. up	-	-	-	-	-	3.86	-	-	-	-	-	-
Dixie Red, 2-in. up	-	-	-	-	-	5.75	-	-	-	-	-	-
Dixie Gems, 2-in. up	-	-	-	-	-	3.50	-	-	-	-	-	-
Duke of Ga., 2-in. up	-	-	-	-	-	5.62	-	-	-	-	-	-
Elberta, 2-in. up	-	-	-	-	-	-	3.40	-	-	-	-	-
Pearson Hileys, 2-in. up	-	-	-	-	-	3.91	-	-	-	-	-	-
Southland, 2-in. up	-	-	-	-	-	-	3.52	-	-	-	-	-
S.C., Beauty Gems, 2-in. up	-	-	-	-	-	3.98	3.20	-	-	-	-	-
Cardinal, 2-in. up	-	-	-	-	-	4.50	-	-	-	-	-	-
Dixie Gems, 2-in. up	-	-	-	-	-	4.12	3.12	-	-	-	-	-
Dixie Reds, 2-in. up	-	-	-	-	-	4.40	-	-	-	-	-	-
Halshaven, 2-in. up	-	-	-	-	-	-	3.63	-	-	-	-	-
Redhaven, 2-in. up	-	-	-	-	-	-	3.70	-	-	-	-	-
<u>3/4-bushel baskets--</u>												
Ga., Elberta, 2-in. up	-	-	-	-	-	-	4.07	-	-	-	-	-
N.J., Brackets, 2-in. up	-	-	-	-	-	-	-	4.25	4.53	4.00	-	-
Early Red Froes	-	-	-	-	-	-	2.62	-	-	-	-	-
Elberta, 2-in. up	-	-	-	-	-	-	-	-	-	3.00	-	-
Hales, 2 1/2-in. up	-	-	-	-	-	-	-	4.50	6.40	6.00	-	-
Jerseylen., 2-in. up	-	-	-	-	-	-	4.00	-	-	-	-	-
Redhaven, 2-in. up	-	-	-	-	-	-	4.50	-	-	-	-	-
Rio Oso Gems, 2 1/2-in. up	-	-	-	-	-	-	-	-	6.25	6.50	-	-
Sunhigh, 2-in. up	-	-	-	-	-	-	-	3.25	-	-	-	-
Triogem, 2-in. up	-	-	-	-	-	-	-	3.19	-	-	-	-
Pa., Hales, 2 1/2-in. up	-	-	-	-	-	-	-	4.50	5.38	-	-	-
Hales, 2 1/2-in. up	-	-	-	-	-	-	-	-	-	-	-	-
Summercrest, 2-in. up	-	-	-	-	-	-	-	3.75	-	-	-	-
Sunrise, 2-in. up	-	-	-	-	-	-	4.75	-	-	-	-	-
Triogems, 2-in. up	-	-	-	-	-	-	-	3.12	-	-	-	-
S.C., Elberta, 2-in. up	-	-	-	-	-	-	4.08	3.70	-	-	-	-
Hales, 2-1/4 in. up	-	-	-	-	-	-	-	4.88	-	-	-	-
Southland, 2-in. up	-	-	-	-	-	-	5.75	-	-	-	-	-
Sunhigh, 2-in. up	-	-	-	-	-	-	4.50	-	-	-	-	-
Triogems, 2-in. up	-	-	-	-	-	-	6.75	-	-	-	-	-
<u>Bushel baskets--</u>												
Mch., Elberta, 2-in. up	-	-	-	-	-	-	-	-	4.52	-	-	-
N.J., Elberta, 2 1/2-in. up	-	-	-	-	-	-	-	-	4.50	-	-	-
Pa., Afterglow, 2 1/2-in. up	-	-	-	-	-	-	-	-	4.62	-	-	-
Elberta, 2-in. up	-	-	-	-	-	-	-	-	4.63	-	-	-
S.C., Hales, 2 1/2-in. up	-	-	-	-	-	-	-	6.80	-	-	-	-
Va., Elberta, 2-in. up	-	-	-	-	-	-	-	3.64	-	-	-	-
<u>Chicago:</u>												
Calif., Merrill Gems 20-lb. lug	-	-	-	-	-	-	-	-	-	-	-	-
70's and larger	-	-	-	-	-	5.75	-	-	-	-	-	-
<u>1/2-bushel baskets--</u>												
Ga., Burbank Elberta, 2-in. up	-	-	-	-	-	-	2.62	-	-	-	-	-
Dixie Gems, 2-in. up	-	-	-	-	-	-	3.08	-	-	-	-	-
Dixie Red, 2-in. up	-	-	-	-	-	5.40	-	-	-	-	-	-
Duke of Ga., 2-in. up	-	-	-	-	-	6.75	-	-	-	-	-	-
Elberta, 2-in. up	-	-	-	-	-	-	2.62	-	-	-	-	-
Golden Jubilee, 2-in. up	-	-	-	-	-	4.00	-	-	-	-	-	-
Southland, 2-in. up	-	-	-	-	-	-	3.31	-	-	-	-	-
Ill., Golden Jubilee, 2-in. up	-	-	-	-	-	-	2.33	-	-	-	-	-
Halshaven, 2-in. up	-	-	-	-	-	-	2.65	-	-	-	-	-
Redhaven, 2-in. up	-	-	-	-	-	-	2.67	-	-	-	-	-
S.C., Dixie Gems, 2-in. up	-	-	-	-	-	-	3.35	-	-	-	-	-
Dixie Reds, 2-in. up	-	-	-	-	-	4.60	3.25	-	-	-	-	-
Redhaven	-	-	-	-	-	-	3.20	-	-	-	-	-
Sullivan Elberta, 2-in. up	-	-	-	-	-	-	5.25	-	-	-	-	-
<u>3/4-bushel baskets--</u>												
Ga., Elberta, 2-in. up	-	-	-	-	-	-	4.68	3.25	-	-	-	-
S.C., Elberta, 2-in. up	-	-	-	-	-	-	3.25	-	-	-	-	-

^{3/} For Western States see Table 2.

Table 1. Continued

OTHER FRUITS--CONTINUED

Market, Origin and description	Jan.	Feb.	Mar.	Apr.	May	June	July	Aug.	Sept.	Oct.	Nov.	Dec.
- - - Dollars Per Unit - - -												
<u>Peaches--Continued</u>												
<u>Chicago:</u>												
<u>Bushel basket--</u>												
Ark., Elberta, 2-in. up	-	-	-	-	-	-	4.38	4.50	-	-	-	-
Ill., Elberta, 2-in. up	-	-	-	-	-	-	-	3.62	-	-	-	-
Ind., Elberta, 2-in. up	-	-	-	-	-	-	-	3.92	3.50	-	-	-
Mich., Elberta, 2-in. up	-	-	-	-	-	-	-	-	3.03	-	-	-
Golden Jubilee, 2-in. up	-	-	-	-	-	-	-	2.44	-	-	-	-
Halchaven, 2-in. up	-	-	-	-	-	-	-	2.64	-	-	-	-
Redhaven, 2-in. up	-	-	-	-	-	-	-	3.25	-	-	-	-
Pa., Elberta, 2-in. up	-	-	-	-	-	-	-	-	4.46	-	-	-
S.C., Elberta, 2-in. up	-	-	-	-	-	-	4.75	4.12	-	-	-	-
W.Va., Elberta, 2-in. up	-	-	-	-	-	-	-	-	3.75	-	-	-
<u>Pears 3/</u>												
<u>New York:</u>												
<u>Bushel basket--</u>												
N.Y., Bartlett	-	-	-	-	-	-	-	3.50	3.92	4.34	-	-
Clapp Favorite	-	-	-	-	-	-	-	2.88	3.74	4.19	-	-
Seckel, 1/2-bushel	-	-	-	-	-	-	-	-	2.63	3.53	-	-
<u>Chicago:</u>												
<u>Bushel basket--</u>												
Mich., Bosc	3.30	-	-	-	-	-	-	-	-	3.80	-	-
Bartlett	-	-	-	-	-	-	-	-	3.75	-	-	-
Clapp Favorite	-	-	-	-	-	-	-	-	2.12	-	-	-
Kieffers	-	-	-	-	-	-	-	-	-	2.36	-	-
<u>Prunes 3/</u>												
<u>New York:</u>												
<u>1/2-bushel basket--</u>												
Idaho, Italian type,	-	-	-	-	-	-	-	-	2.87	3.67	-	-
N.Y., Fellenberg	-	-	-	-	-	-	-	-	2.13	2.38	-	-

MELONS

Cantaloups

<u>New York:</u>												
<u>Jumbo crate--36's and 45's</u>												
Ariz.,	-	-	-	-	-	9.06	9.89	-	-	-	-	-
Ariz., 23's	-	-	-	-	-	-	-	6.56	-	-	-	-
Calif.,	-	-	-	-	14.00	9.78	9.35	7.84	7.13	8.55	5.50*	-
Calif., 27's	-	-	-	-	-	-	-	7.12	6.89	6.62	-	-
Texas,	-	-	-	-	9.55	8.25	-	-	-	-	-	-
Mexico,	13.67	15.94	13.75	12.52	16.69	-	-	-	-	-	-	17.00
Del. bushel basket	-	-	-	-	-	-	2.35	2.47	-	-	-	-
Del. 2/3 crate 24's	-	-	-	-	-	-	3.75	-	-	-	-	-
<u>Chicago:</u>												
<u>Jumbo crate--36's and 45's--</u>												
Ariz.,	-	-	-	-	-	9.00	9.17	-	-	-	-	-
Calif.,	-	-	-	-	10.75	9.62	8.25	6.94	6.02	6.50	-	-
Texas,	-	-	-	-	8.58	8.50	-	-	-	-	-	-
Mexico,	-	15.00	12.00	11.90	13.00	-	-	-	-	-	-	-

Honeydew Melons

<u>New York:</u>												
<u>Standard crate--9's - 12's--</u>												
Ariz.,	-	-	-	-	-	-	5.58	-	-	-	-	-
Calif.,	-	-	-	-	-	5.75	6.49	4.45	4.07	4.03	3.75	-
Calif., Jumbo 6-8's	-	-	-	-	-	-	-	3.97	4.11	4.02	4.00	-
Texas,	-	-	-	-	6.08	5.25	6.50	-	-	-	-	-
<u>Chicago:</u>												
<u>Standard crate--9's - 12's--</u>												
Ariz.,	-	-	-	-	-	-	5.56	4.50	-	-	-	-
Calif.,	-	-	-	-	-	5.42	5.68	4.40	3.56	3.35	3.00	-
Mexico, 36 - 45's Jumbo crate	-	-	-	7.88	8.38	-	-	-	-	-	-	-
Texas, 9 - 12's	-	-	-	-	-	-	5.25	5.62	-	-	-	-
36 - 45's Jumbo crate	-	-	-	-	8.62	8.90	-	-	-	-	-	-

3/ For Western States see Table 2.

Table 1. Continued

MELONS--CONTINUED

Market, Origin and description	Jan.	Feb.	Mar.	Apr.	May	June	July	Aug.	Sept.	Oct.	Nov.	Dec.
- - - Dollars Per Unit - - -												
<u>Watermelons</u>												
New York:												
Melon - various varieties, 30-lb. av. unless stated--												
Del., 28 - 31-lb. av.	-	-	-	-	-	-	-	1.25	1.10	-	-	-
Fla.,	-	-	-	-	2.18	1.56	1.00	-	-	-	-	-
Ga.,	-	-	-	-	-	-	1.12	-	-	-	-	-
Md., 25-lb. av.	-	-	-	-	-	-	-	.91	.85	-	-	-
N.C., 20-lb. av.	-	-	-	-	-	-	-	-	.70	-	-	-
N.C., 15-lb. av.	-	-	-	-	-	-	-	-	.50	-	-	-
N.C.,	-	-	-	-	-	-	-	.98	-	-	-	-
S.C.,	-	-	-	-	-	-	-	.88	-	-	-	-
Va., 25-lb. av.	-	-	-	-	-	-	1.05	.91	-	-	-	-
Chicago:												
Cvt.--												
Fla., Cannonball, 28-34-lb. av.	-	-	-	-	5.75	4.62	3.25	-	-	-	-	-
Long Gray, 24-32-lb. av.	-	-	-	-	5.29	4.34	3.25	-	-	-	-	-
Ga., Long Gray, 24-32-lb. av.	-	-	-	-	-	-	3.50	-	-	-	-	-
Mo., Cannonball, 24-36-lb. av.	-	-	-	-	-	-	3.25	2.50	-	-	-	-
Texas, Cannonball, 32-46-lb. av.	-	-	-	-	-	-	3.62	2.75	-	-	-	-
Long Gray, 26-28-lb. av.	-	-	-	-	-	-	3.50	2.00	-	-	-	-

VEGETABLES

<u>Artichokes, Globe type</u>												
New York:												
Calif., Var. sizes, special & 7-inch box	4.19	-	-	-	3.76	3.50	-	3.25	3.46	3.66	3.94	5.73
Var. sizes, boxes	8.96	10.06	7.33	6.05	-	-	-	-	-	8.13	-	-
Chicago:												
Calif., Var. sizes, 7-in. box ..	3.10	4.00	4.10	2.67	2.84	3.25	-	-	-	3.32	3.50	4.50
<u>Asparagus</u>												
New York:												
Pyramid crate--												
Calif., extra select	-	15.50	10.56	5.44	-	-	-	-	-	-	-	-
Jumbo 12-bchs	-	-	12.38	6.38	-	-	-	-	-	-	-	-
loose, large	-	-	7.92	4.69	4.00	-	-	-	-	-	-	-
select 12-bchs	-	13.50	9.88	5.13	-	-	-	-	-	-	-	-
N.J., colossal 12-bchs	-	-	-	3.85	4.16	4.02	-	-	-	-	-	-
Jumbo 12-bchs	-	-	-	-	-	4.50	-	-	-	-	-	-
loose colossal	-	-	-	3.75	4.04	3.83	-	-	-	-	-	-
Pa., Jumbo 12-bchs	-	-	-	5.75	6.97	6.28	-	-	-	-	-	-
Chicago:												
Pyramid crate--												
Calif., Extra select 12-bchs ...	-	15.00	11.75	5.90	5.25	-	-	-	-	-	-	-
loose, large	-	-	8.33	4.56	-	-	-	-	-	-	-	-
select 12-bchs	-	13.50	10.88	5.72	5.25	-	-	-	-	-	-	-
Ill., Godfrey Section, Fancy 12-bchs.	-	-	-	-	2.90	2.62	-	-	-	-	-	-
<u>Beans, Lima</u>												
New York:												
Bushel hamper--												
Fla.,	5.95	-	-	-	-	-	-	-	-	-	-	-
Md.,	-	-	-	-	-	-	3.35*	-	-	-	-	-
L.I.,	-	-	-	-	-	-	4.04	3.47	4.10	3.31	-	-
Chicago:												
Bushel hamper--												
Mich., 12-qt. basket	-	-	-	-	-	-	-	-	1.30	-	-	-
<u>Beans, Snap, Green</u>												
New York:												
Bushel hamper--												
Fla., Contender	5.49	7.55	5.62	4.51	4.18	-	-	-	-	-	4.17	5.56
Plentiful	4.94	6.59	4.62	3.00	-	-	-	-	-	-	3.92	-
Valentine	5.83	7.34	5.62	4.78	4.39	-	-	-	-	3.92	4.31	5.36
Md., Valentine	-	-	-	-	-	2.62	-	-	-	-	-	-
N.J., Contender	-	-	-	-	-	-	-	-	-	4.25	-	-
N.J., Valentine	-	-	-	-	-	2.36	3.75	-	2.72	4.17	-	-

* Fair quality.

Table 1.--Continued

VEGETABLES--CONTINUED

Market, Origin and description	Jan.	Feb.	Mar.	Apr.	May	June	July	Aug.	Sept.	Oct.	Nov.	Dec.
-- - - Dollars Per Unit - - -												
<u>Beans, Snap, Green--Continued</u>												
New York:												
<u>Bushel hamper--</u>												
N.C., Valentine	-	-	-	-	3.55	3.15	-	-	-	4.50	-	-
N.Y., Valentine	-	-	-	-	-	-	3.39	3.43	2.78	-	-	-
S.C., Valentine	-	-	-	-	4.41	-	-	-	-	3.89	4.08	-
Va., Valentine	-	-	-	-	-	3.38	-	-	-	3.38	-	-
Chicago:												
<u>Bushel hamper--</u>												
Fla., Contender	-	-	6.33	5.25	-	-	-	-	-	-	-	7.66
Fla., Valentine	5.93	7.25	5.38	5.10	3.75*	-	-	-	-	3.25*	4.00	4.42
Ill., Valentine	-	-	-	-	-	-	-	2.75	2.33	-	-	-
Ill., Contender	-	-	-	-	-	2.83	3.75	2.75	2.25	3.06	-	-
La., Valentine	-	-	-	-	3.67	4.00	-	-	-	3.75	-	-
Mich., Valentine	-	-	-	-	-	-	3.25	3.65	2.48	-	-	-
Miss., Contender	-	-	-	-	-	-	-	-	-	3.38	-	-
Miss., Valentine	-	-	-	-	4.17	3.58	-	-	-	-	-	-
N.Y., Valentine	-	-	-	-	-	-	-	-	2.92	-	-	-
S.C., Valentine	-	-	-	-	2.88	-	-	-	-	-	-	-
<u>Beets</u>												
New York:												
<u>1-3/5-bushel box--</u>												
N.C., 2 1/2-dozen bchs	-	-	-	-	2.60	2.75	-	-	-	-	-	-
N.J., per bunch	-	-	-	-	-	.09	.08	.06	.07	.06	.06	-
S.C., 2 1/2-dozen	-	-	-	1.90	2.23	-	-	-	-	-	-	-
Texas, 3-dozen 1/2-W.G.A.crate ..	3.08	3.16	3.10	3.45	-	-	-	-	-	-	-	4.68
Texas, 3 1/2-dozen Pony crate ...	3.56	3.62	3.75	-	-	-	-	-	-	-	-	4.40
Texas, 4-dozen Pony crate ...	-	-	3.92	4.56	-	-	-	-	-	-	-	-
50-lb. sack topped wshd	-	-	-	-	-	3.50	-	-	-	-	-	-
Chicago:												
<u>1-3/4-bushel box--</u>												
Ill., 18-bchs	-	-	-	-	-	-	-	-	-	1.09	-	-
Ill., 15-bchs	-	-	-	-	-	1.18	.94	1.15	-	-	1.00	-
Ill., 20-bchs	-	-	-	-	-	-	-	1.45	1.70	-	-	-
<u>1-3/5-bushel box--</u>												
Miss., 15's bunched	-	-	-	-	1.98	-	-	-	-	-	-	-
Mo., 2 1/2-dozen bchs	-	-	-	-	1.62*	-	-	-	-	-	-	-
S.C., 2 1/2-dozen bchs	-	-	-	-	-	2.82	2.42	-	-	-	-	-
Texas, 3-dozen bchs, 1/2-W.G.A.crate	2.78	2.72	2.68	3.17	4.00	-	-	-	-	-	3.50	2.75
Texas, 3 1/2-dozen Pony crate ...	3.24	3.00	3.04	3.78	-	-	-	-	-	-	-	3.75
<u>Broccoli</u>												
New York:												
<u>1/2 crate-14 bunches, unless stated--</u>												
Ariz.,	3.00	2.75	-	-	-	-	-	-	-	-	-	3.58
Calif.,	3.06	2.81	3.10	3.05	3.78	3.36	4.70	4.56	3.97	3.64	3.21	3.51
Pu., 12-bchs, 4/5-bu.crate..	-	-	-	-	-	2.50	2.90	2.81	2.62	2.50	2.50	2.50
Texas,	-	2.53	-	-	-	-	-	-	-	-	-	-
Chicago:												
<u>1/2 crates-14 bushel, unless stated--</u>												
Calif.,	2.55	2.48	2.69	2.29	2.9	2.91	3.31	3.21	3.23	3.20	2.76	3.09
Texas,	2.12	2.15	-	-	-	-	-	-	-	-	-	-
<u>Brussels Sprouts</u>												
New York:												
Calif., 25-lb. drums	2.20	2.75	-	-	-	-	-	-	-	3.00	3.00	3.22
Texas, Bushel basket	-	3.75	2.25	-	-	-	-	-	-	-	-	-
L.I., per quart	-	-	-	-	-	-	-	-	-	.21	.23	.25
<u>Cabbage</u>												
New York:												
<u>Danish type--</u>												
L.I., 1-3/5-bu. box,	1.38	-	-	-	-	-	-	1.62	1.32	1.10	1.24	1.85
N.Y., 50-lb. sacks,	1.02	1.09	1.60	2.25	-	-	-	1.88	1.39	1.15	1.18	1.72
<u>Domestic Round type--</u>												
Calif., cartons	-	-	4.33	-	-	-	-	-	-	-	-	-
Calif., 1-3/4 bu. crate	-	-	3.19	-	-	-	-	-	-	-	-	-
Fla., 1-3/4-bu. crate	2.45	2.80	3.42	2.36	2.75	-	-	-	-	-	-	3.33

* Fair quality.

Table 1.--Continued

VEGETABLES--CONTINUED

Market, Origin and description	Jan.	Feb.	Mar.	Apr.	May	June	July	Aug.	Sept.	Oct.	Nov.	Dec.
- - - Dollars Per Unit - - -												
<u>Cabbage--Continued</u>												
<u>Domestic Round Type--</u>												
Ge., 1-3/4-bu. crate	-	-	-	2.25	2.82	-	-	-	-	-	-	-
N.C., 1-3/4-bu. crate	-	-	-	-	2.15	-	-	-	-	-	-	-
N.J., 1-3/5-bu. crate	-	-	-	-	-	1.31	1.80	1.50	1.25	1.08	1.08	-
S.C., 1-3/4-bu. crate	-	-	-	2.26	2.76	-	-	-	-	-	-	-
Texas, 1-3/4-bu. crnte	2.47	2.50	-	-	-	-	-	-	-	-	-	3.21
Va., 1-3/4-bu. crate	-	-	-	-	2.51	1.51	-	-	-	1.75	1.72	2.02
<u>Chicago:</u>												
<u>Danish Type--</u>												
Wis., 50-lb. sacks	1.00	1.19	1.48	1.75	-	-	-	-	-	-	-	1.43
<u>Domestic Round type--</u>												
Ariz., 1-3/4-bu. crate	2.32	2.25	-	-	-	-	-	-	-	-	-	3.06
Calif., 1-3/4-bu. crate	2.15	2.74	3.63	-	-	-	-	-	-	-	-	-
Fla., 1-3/4-bu. crate	2.32	2.74	3.70	2.70	-	-	-	-	-	-	-	-
Ge., 1-3/4-bu. crate	-	-	-	2.57	-	-	-	-	-	-	-	-
Ill., 1-3/4-bu. crate	-	-	-	-	-	-	1.30	1.26	1.13	1.08	1.19	1.12
La., 50-lb. sack	-	-	3.85	2.70	-	-	-	-	-	-	-	-
Miss., 1-3/4-bu. crate	-	-	-	1.70	2.02	-	-	-	-	-	-	-
50-lb. sack	-	-	-	-	1.77	-	-	-	-	-	-	-
Mo., 1-3/4-bu. crate	-	-	-	-	-	2.08	-	-	-	-	-	-
Ohio, 1-3/4-bu. crate	-	-	-	-	-	2.06	1.48	-	-	-	-	-
S.C., 1-3/4-bu. crnte	-	-	-	-	1.88	-	-	-	-	-	-	-
Tenn., 1-3/4-bu. crate	-	-	-	-	2.06	1.82	-	-	-	-	-	-
Texas, 1-3/4-bu. crate	2.34	2.72	3.71	3.25	-	-	-	-	-	-	2.88	2.92
50-lb. sack	2.35	2.42	2.70	2.32	-	-	-	-	-	-	-	-
Ill., 50-60-lb. crate	-	-	-	-	-	1.65	1.54	1.56	1.44	1.41	1.62	1.75
Va., 1-3/4-bu. crate	-	-	-	-	2.00	-	-	-	-	-	-	-
Wis., 50-60-lb. crate	-	-	-	-	-	-	-	-	-	1.50	1.68	-
<u>Carrots</u>												
<u>New York:</u>												
<u>Bunches, 4-dozen--</u>												
Ariz., Pony crate	-	-	-	-	3.75	-	-	-	-	-	-	-
Calif., Pony crate	4.47	3.86	3.62	3.87	3.78	4.32	4.70	5.24	6.48	6.40	5.23	5.68
<u>Topped, washed--</u>												
Ariz., 48-1-lb. film bg. crt...	-	-	-	-	-	4.64	4.99	-	-	-	-	4.75
50-lb. sack	-	-	-	-	-	-	4.75	-	-	-	-	-
Calif., 50-lb. sack	-	-	-	-	-	-	3.34	3.89	4.18	3.52	2.92	3.61
48-1-lb. film bg. crt...	4.52	4.14	3.75	3.84	5.27	4.76	5.41	5.97	6.36	6.21	6.10	5.84
Colo., " " " " " "	-	-	-	-	-	-	-	-	-	-	5.50	-
N.J., 50-lb. sack	-	-	-	-	-	-	-	-	-	-	-	3.19
bushel basket	1.25	-	-	-	-	-	2.69	-	2.25	1.92	1.75	1.71
N.Y., 50-lb. sack	-	-	-	-	-	-	-	-	-	-	1.75	1.73
bushel basket	1.25	1.00	1.12	1.18	1.19	1.50	-	1.62	2.54	2.00	1.56	-
Texas, 48-1-lb. film bag crt...	4.03	3.68	3.54	3.50	4.71	4.25	-	-	5.98	5.97	5.75	5.47
50-lb. sack	-	-	-	-	-	-	-	-	4.38	-	-	-
<u>Chicago:</u>												
<u>Bunched, 4-dozen--</u>												
Ariz., Pony crate	-	-	-	-	4.00	4.00	-	-	-	-	-	-
Calif., Pony crate	3.87	4.15	3.68	3.65	4.18	4.50	4.28	-	-	-	-	-
<u>Topped, washed--</u>												
Ariz., 48-1-lb. film bag crt...	3.96	3.58	3.39	3.18	4.73	4.50	4.62	-	-	-	-	5.12
Calif., " " " " " "	4.14	3.58	3.33	3.38	4.73	4.46	5.03	5.36	5.69	5.51	5.62	5.42
50-lb. sack	2.02	-	-	-	2.42	3.33	3.45	3.57	4.03	3.24	2.63	2.94
Colo., 48-1-lb. film bag crt...	-	-	-	-	-	-	-	-	5.09	5.16	5.32	5.18
Ill., 50-lb. sack	1.00	.92	1.00	2.19	1.50	-	-	-	1.95	1.36	-	-
Miss., 50-lb. sack	-	-	-	-	-	-	-	-	-	-	1.82	-
N.Mex., 48-1-lb. film bag crt...	-	-	-	-	-	-	-	3.00	5.67	5.00	-	-
Texas, " " " " " "	3.76	3.41	3.16	3.22	4.64	4.00	-	-	-	-	-	4.74
50-lb. sack	1.75	1.66	2.05	3.14	2.50	-	-	-	-	-	-	-
<u>Cauliflower</u>												
<u>New York:</u>												
Calif., 18's & lgr. W.G.A. crt.	3.50	5.31	4.69	4.19	5.61	4.75	-	-	-	-	-	5.00
Fla., 12's & lgr. Pony crts..	-	1.25	-	-	-	-	-	-	-	-	-	-
L.I., 12's & lgr. L.I. type crt	-	-	-	-	-	-	-	-	1.08	1.63	2.08	2.90
N.J., 1-3/5-bushel box	-	-	-	-	2.25	1.64	-	-	-	-	-	-
N.Y., 12's cartons	-	-	-	-	-	-	3.38	2.05	2.53	1.50	-	-
12's & lgr. Catskill crt	-	-	-	-	-	-	3.25	2.45	2.53	1.50	-	-
Texas, 12's & lgr. L.I. type crt.	2.75	3.66	-	-	-	-	-	-	-	-	-	4.15

Table 1.--Continued

VEGETABLES--CONTINUED

Market, Origin and description	Jan.	Feb.	Mar.	Apr.	May	June	July	Aug.	Sept.	Oct.	Nov.	Dec.
- - - Dollars Per Unit - - -												
<u>Cauliflower--Continued</u>												
<u>Chicago:</u>												
Ariz., 12's & lgr. L.I. type crt	-	3.52	3.12	-	-	-	-	-	-	-	-	-
Calif., 18's & lgr. W.G.A. crt...	-	4.66	3.81	3.69	5.23	4.88	5.19	4.13	-	-	-	4.00
Colo., 12's L.I. type crt	-	-	-	-	-	-	-	2.74	2.92	-	-	-
Micha., 12's L.I. type crt.....	-	-	-	-	-	-	-	3.00	2.46	1.71	1.98	-
N.Y., 12's & lgr. L.I. type crt	-	-	-	-	-	-	-	-	-	-	2.92	3.38
Texas, 12's & lgr. L.I. type crt	2.35	3.55	-	-	-	-	-	-	-	-	3.00	3.56
<u>Celery</u>												
<u>New York:</u>												
<u>16-inch crate-Trimmed tops--</u>												
Calif., Pascal type, 2-2 1/2-do.	6.38	5.60	4.30	5.88	5.80	6.10	5.09	3.84	4.60	3.66	3.96	4.75
Fla., Golden Heart 2-6-do.	4.94	4.88	5.38	3.32	6.98	7.00	-	-	-	-	-	3.46
Pascal type, 2-4-do.	4.73	4.59	3.38	3.05	4.62	5.34	-	-	-	-	2.70	3.06
N.Y., Golden Heart, 3-4-do.	-	-	-	-	-	-	3.65	3.12	3.82	3.44	-	-
Pascal type, 2-3-do.	-	-	-	-	-	-	3.28	2.54	3.26	2.40	2.25*	-
Calif., Golden Heart, 3-6-do.	-	-	-	-	-	-	-	-	-	-	5.38	5.66
1/2 crate	-	-	-	-	-	-	-	-	-	-	-	-
<u>Chicago:</u>												
<u>16-inch crate-Trimmed tops--</u>												
Calif., Pascal type, 2-3-do.	6.00	5.25	3.79	5.22	5.10	5.89	4.50	3.59	4.15	3.14	3.60	4.30
Fla., Pascal type, 2-3-do.	4.72	4.51	3.48	3.24	4.23	4.62	-	-	-	-	-	2.97
Golden Heart, 4-6-do.	-	6.12	5.94	3.80	3.75	-	-	-	-	-	-	-
Mich., Pascal type, 2-3-do.	-	-	-	-	-	-	3.00	2.38	3.05	1.75	-	-
Golden Heart, 4-6-do.	-	-	-	-	-	-	-	-	-	-	-	-
4/5 crate	-	-	-	-	-	4.00	2.20	2.12	2.43	1.75	-	-
<u>Corn, Green</u>												
<u>New York:</u>												
<u>Crate--5-dozen--Yellow</u>												
Calif.,	-	-	-	-	-	-	-	-	-	5.22	3.42	-
Fla.,	4.21	3.83	4.00	3.67	3.94	4.06	3.80	-	-	-	3.17	3.28
N.J.,	-	-	-	-	-	-	3.16	2.38	-	-	-	-
N.Y.,	-	-	-	-	-	-	-	2.78	2.03	2.75	-	-
N.Y., (50-cars)	-	-	-	-	-	-	-	2.15	2.06	2.32	-	-
Va.,	-	-	-	-	-	-	2.88	-	-	-	-	-
Wash.,	-	-	-	-	-	-	-	-	-	4.88	-	-
<u>Chicago:</u>												
<u>Crate--5-dozen--Yellow</u>												
Ala., 4 1/2-5-dozen	-	-	-	-	-	-	3.70	-	-	-	-	-
Calif.,	-	-	-	-	-	4.00	3.97	-	-	3.81	2.92	-
Fla.,	3.82	3.74	4.19	3.75	3.87	3.68	3.75	-	-	-	2.88	3.32
Ill., 4-5-dozen	-	-	-	-	-	-	1.32	1.44	1.25	-	-	-
<u>Cucumbers</u>												
<u>New York:</u>												
<u>Bushel baskets-med.-lge--</u>												
Fla.,	5.40	7.71	6.99	5.96	4.87	-	-	-	-	3.58	3.52	8.72
L.I.,	-	-	-	-	-	-	3.25	2.58	2.50	1.50	-	-
Md.,	-	-	-	-	-	-	4.08	-	-	-	-	-
N.C.,	-	-	-	-	-	4.42	4.17	-	-	-	-	-
N.J.,	-	-	-	-	-	-	3.52	2.69	-	-	-	-
N.Y., (Western Section).....	-	-	-	-	-	-	-	2.56	3.25	-	-	-
Pa.,	-	-	-	-	-	-	-	2.38	-	-	-	-
S.C.,	-	-	-	-	7.17	5.68	-	-	-	3.55	3.65	-
Va.,	-	-	-	-	-	4.00	-	-	2.37	2.62	-	-
Cuba (Repacked).....	-	7.18	6.83	-	-	-	-	-	-	-	-	14.20
<u>Chicago:</u>												
<u>Bushel basket--med.-lge.--</u>												
Ala.,	-	-	-	-	3.94	3.42	-	-	-	-	-	-
Fla.,	5.25	7.06	7.38	6.15	4.81	-	-	-	-	3.67	3.32	7.08
Ill.,	-	-	-	-	-	4.75	3.75	1.82	1.62	-	-	-
Ia.,	-	-	-	-	4.12	3.67	-	-	3.50	3.00	-	-
Mich.,	-	-	-	-	-	-	5.25	2.12	2.00	-	-	-
N.C.,	-	-	-	-	-	3.95	3.25	-	-	-	-	-
S.C.,	-	-	-	-	-	5.06	-	-	-	3.50	-	-
Cuba, (Repacked).....	-	6.83	6.75	-	-	-	-	-	-	-	-	12.83

Eggplant--See page 15

1/ U.S. Fancy
* Fair quality.

Table 1.--Continued

VEGETABLES--CONTINUED

Market, Origin and description	Jan.	Feb.	Mar.	Apr.	May	June	July	Aug.	Sept.	Oct.	Nov.	Dec.
- - - Dollars Per Unit - - -												
<u>Endive--Chicory</u>												
New York:												
<u>1-1/9-bushel crate--</u>												
Fla.,	2.43	1.98	1.79	2.46	3.75	-	-	-	-	2.63	1.54	2.78
N.J.,	-	-	-	-	-	2.34	2.27	1.66	1.19	1.48	-	-
<u>Escarole</u>												
New York:												
<u>1-1/9-bushel crate--</u>												
Fla.,	2.41	1.87	1.59	1.72	2.58	-	-	-	-	2.00	1.57	2.21
N.J.,	-	-	-	-	-	1.50	1.49	1.28	1.10	1.20	-	-
Chicago:												
Fla., 1-1/9 bushel crate	2.25	2.12	1.76	1.67	2.84	3.75	-	-	-	-	1.69	2.17
Ill., bushel basket	-	-	-	-	-	1.25	1.12	1.22	1.20	1.02	1.00	-
Ohio, 16-qt. basket	-	-	-	-	-	-	1.50	1.30	1.12	1.00	-	-
<u>Kale</u>												
New York:												
N.J., 1-3/5-bushel box	-	-	-	.75	1.00	1.00	.75	1.00	1.06	.85	.85	.88
bushel basket	-	-	-	-	-	-	1.12	-	-	-	-	-
Va., bushel basket	1.15	1.10	1.14	1.03	-	-	-	-	-	-	-	1.14
<u>Lettuce</u>												
New York:												
<u>Iceberg type-24 heads, carton--</u>												
Ariz.,	4.75	-	-	3.74	3.33	-	-	-	-	5.26	3.73	3.24
Calif.,	3.84	3.10	2.46	4.63	3.14	4.04	4.74	5.70	4.17	4.73	3.50	3.33
Colo.,	-	-	-	-	-	-	-	5.00	-	-	-	-
N.J., Eastern crate, 18's	-	-	-	-	-	-	1.25	-	-	-	-	-
Eastern crate	-	-	-	-	1.88	1.83	1.75	-	-	3.24	2.36	-
N.Y., 1-1/2-bu. crate, 18-24's	-	-	-	-	-	1.52	2.62	4.54	2.22	1.63	-	-
Va.,	-	-	-	-	1.38	-	-	-	-	-	-	-
<u>Big Boston type-24 heads-Eastern crate--</u>												
Fla.,	2.94	4.00	3.38	3.13	3.75	-	-	-	-	-	2.12	3.10
N.J.,	-	-	-	-	1.31	.90	-	-	-	2.75	2.50	-
N.Y.,	-	-	-	-	-	-	3.06	3.29	2.00	2.00	-	-
<u>Romaine type--Eastern crate--</u>												
Ariz., 18's	-	-	-	-	-	-	-	-	-	-	-	2.40
Fla., 1-1/9-bushel crate	2.46	2.88	2.11	2.66	2.36	-	-	-	-	2.00	1.59	2.25
N.J., bushel basket	-	-	-	-	1.14	.96	.88	-	-	2.38	1.38	-
1-1/2-bushel crate,	-	-	-	-	-	-	.75	-	-	-	-	-
Chicago:												
<u>Iceberg type-24 heads, carton--</u>												
Ariz.,	3.37	2.60	2.31	3.01	3.48	-	-	-	-	4.38	2.94	2.65
Calif.,	3.37	2.68	2.29	3.37	2.76	3.95	3.81	4.25	3.12	3.75	2.87	3.18
Colo.,	-	-	-	-	-	-	-	3.12	3.50	-	-	-
Texas,	3.00	2.50	-	-	-	-	-	-	-	-	-	-
<u>Mushrooms</u>												
New York:												
<u>Extra Fancy & Special--</u>												
Pa., 4-quart basket	1.36	1.49	1.39	1.26	1.49	1.77	1.58	1.70	1.74	1.45	1.37	1.47
Chicago:												
Ill., 1-pound carton57	.58	.58	.57	.57	.58	.60	.62	.62	.61	.56	.55
<u>Onions</u>												
New York:												
<u>50-lb. sacks--</u>												
Ariz., Yellow Bermuda, Med....	-	-	-	-	3.75	4.25	3.29	-	-	-	-	-
Calif., Yellows, lgc.....	-	-	-	-	-	3.94	3.11	-	2.25	2.67	-	-
Idaho, Spanish type, mod.-lgr.	3.66	4.09	3.20	3.20	-	-	-	-	2.39	3.00	3.10	3.05
N.J., Yellow, med.	-	-	-	-	-	-	1.99	-	-	-	-	-
N.Y., Yellow, med.	1.71	1.76	1.55	2.28	2.70	-	-	-	-	-	-	-
Yellow, med.(Orange Co)	1.28	-	-	-	-	-	-	-	-	-	-	-
Yellow, med.(Western Section)	1.52	-	-	-	-	-	1.38	1.03	1.02	1.35	1.56	1.53
Texas, Yellow Bermuda, med....	-	-	-	4.38	3.82	4.38	3.25	-	-	-	-	-

Table 1.--Continued

VEGETABLES --CONTINUED

Market, Origin, and description	Jan.	Feb.	Mar.	Apr.	May	June	July	Aug.	Sept.	Oct.	Nov.	Dec.
- - - Dollars Per Unit - - -												
<u>Onions--Continued</u>												
New York:												
<u>50-lb. sacks--</u>												
Texas, Granex, lge.	-	-	2.88	3.16	3.12	-	-	-	-	-	-	-
Grano, lge.	-	-	-	3.64	2.99	3.88	-	-	-	-	-	-
Yellows, lge.	-	-	-	-	-	-	-	2.35	2.23	-	-	-
Wash., Yellows, lge.	-	-	-	-	-	-	-	2.36	2.30	-	-	-
Chicago:												
<u>50-lb. sacks--</u>												
Ariz., Yellow Bermuda	-	-	-	-	3.41	3.92	2.80	-	-	-	-	-
Calif., Yellows, lge.	-	-	-	-	-	4.98	2.74	2.00	-	-	-	-
Colo., Spanish type, 3" & lgr.	3.35	3.54	-	-	-	-	-	-	2.00	2.64	2.62	2.55
White Spanish, 3" & lgr.	3.36	3.57	-	-	-	-	-	-	2.01	2.15	2.37	2.61
" " medium ...	3.38	3.55	3.00	-	-	-	-	-	-	-	-	-
Ida-Ore.,												
Spanish type, 3" & lgr.	3.51	3.70	2.68	2.80	-	-	-	-	-	-	-	-
Midwestern,												
Yellow Globe, Med.	1.39	1.58	1.30	1.81	-	-	1.75	1.24	1.40	1.57	1.66	1.62
Texas, Yellow Bermuda, med. ...	-	-	-	3.56	3.45	4.12	-	-	-	-	-	-
Yellow 3" & lgr.	-	-	-	-	-	-	-	-	1.58	-	-	-
Grano, 3" & lgr.	-	-	-	3.27	2.42	3.18	-	-	-	-	-	-
Grano, med.	-	-	-	3.24	2.91	3.60	-	-	-	-	-	-
Crystal White Wax,												
3" & lgr.	-	-	3.25	3.09	3.75	-	-	-	-	-	-	-
Granex, Med.	-	-	2.80	3.09	3.25	-	-	-	-	-	-	-
Granex, 3" & lgr.	-	-	2.50	3.05	2.35	-	-	-	-	-	-	-
Utah, Spanish type, 3" & lgr.	2.65	-	-	-	-	-	-	-	-	-	-	-
<u>Peas, Green</u>												
New York:												
<u>Bushel basket--</u>												
Calif.,	-	-	-	3.86	3.76	5.22	6.50	-	4.38	4.66	5.56	5.06
Colo.,	-	-	-	-	-	-	5.69	4.98	-	-	-	-
Idaho,	-	-	-	-	-	4.69	4.88	4.13	4.45	-	-	-
L.I.,	-	-	-	-	-	2.70	3.25	-	-	-	-	-
N.Mex.,	-	-	-	-	-	-	5.75	-	-	-	-	-
Mexico,	4.06	3.90	5.73	-	-	-	-	-	-	-	-	5.80
Chicago:												
<u>Bushel basket--</u>												
Ariz.,	-	-	-	2.82	2.75	-	-	-	-	-	-	-
Calif.,	-	-	-	2.98	3.38	4.50	-	-	4.25	3.50	5.25	4.73
Colo.,	-	-	-	-	-	-	5.18	4.21	3.55	-	-	-
Idaho,	-	-	-	-	-	4.70	4.38	-	-	-	-	-
Wash.,	-	-	-	-	-	-	5.17	-	-	-	-	-
Mexico,	-	3.63	-	-	-	-	-	-	-	-	-	4.88
<u>Poppers, Green</u>												
New York:												
<u>Bushel basket- Calif. Wonder type--</u>												
Calif., 30-lb. crate	-	-	-	-	-	-	-	-	-	2.92	2.84	-
Fla.,	3.71	4.25	4.88	7.41	7.43	5.52	4.75	-	-	-	3.31	5.66
World Beater type	2.93	2.86	2.94	5.25	-	-	-	-	-	-	-	-
N.C.,	-	-	-	-	-	-	4.40	-	-	-	-	-
N.J.,	-	-	-	-	-	-	5.00	1.82	1.50	1.21	-	-
Texas,	-	-	-	-	-	-	-	-	-	-	3.49	4.81
Va.,	-	-	-	-	-	-	-	-	-	-	2.39	-
La., World Beater type	-	-	-	-	-	5.33	4.00	-	-	-	-	-
Chicago:												
<u>Bushel basket- Calif. Wonder type--</u>												
Fla.,	4.18	4.81	6.06	8.10	7.50	4.25*	-	-	-	-	-	6.64
Ill.,	-	-	-	-	-	-	5.21	2.48	1.81	1.37	-	-
La.,	-	-	-	-	6.90	4.44	3.75	-	-	-	-	-
Mich.,	-	-	-	-	-	-	-	2.38	2.31	-	-	-
N.C.,	-	-	-	-	-	-	4.58	-	-	-	-	-
Texas,	4.12	-	-	-	-	-	-	-	-	-	3.38	4.87
Calif., 30-lb. crate	-	-	-	-	-	-	-	-	-	3.00	3.05	-

* Fair quality.

Table 1.--Continued

VEGETABLES--CONTINUED

Market, Origin and description	Jan.	Feb.	Mar.	Apr.	May	June	July	Aug.	Sept.	Oct.	Nov.	Dec.
- - - Dollars Per Unit - - -												
<u>Potatoes, White</u>												
<u>New York:</u>												
U.S. No. 1, Size 3, 50-lb. sack--												
Calif., Long White, washed	-	-	-	-	2.27	2.21	2.45	2.78	-	-	-	-
Fin., Round Red, washed	2.74	2.46	2.22	2.13	2.32	-	-	-	-	-	-	-
Sebago, washed	-	2.41	2.26	1.91	2.11	1.85	-	-	-	-	-	-
Idaho, Russet Burbank, wshd 5/	2.36	2.34	2.31	2.23	2.39	2.70	-	-	2.48	2.32	2.32	2.32
Ida.-Oreg.,												
Early Gons, washed	-	-	-	-	-	-	-	2.71	-	-	-	-
Long Whites, washed	-	-	-	-	-	-	-	2.47	-	-	-	-
Russet, Burbank, wshd 5/	-	-	-	-	-	-	-	2.70	-	-	-	-
L.I.,												
Cobbler, unwashed	-	-	-	-	-	-	1.11	1.13	1.12	-	-	-
Chippewa & Katahdin,												
v/washed	1.39	1.31	1.26	1.25	-	-	-	1.20	1.17	1.16	1.30	1.31
Maine, Katahdin type, unwashed												
6/	1.50	1.40	1.34	1.31	1.36	1.33	1.52	-	-	1.30	1.33	1.42
N.C.,												
Cobbler, washed	-	-	-	-	-	1.40	-	-	-	-	-	-
Sebago, washed	-	-	-	-	-	-	1.45	-	-	-	-	-
S.C.,												
Sebago, washed	-	-	-	-	-	1.62	-	-	-	-	-	-
Wash.,												
Russets, washed	-	-	-	-	-	-	-	2.75	2.46	2.13	-	-
Long whites, washed ...	-	-	-	-	-	-	-	2.53	-	-	-	-
Va.,												
Cobblers, unwashed	-	-	-	-	-	1.28	1.07	-	-	-	-	-
<u>Chicago:</u>												
Carlot Sales-U.S.No. 1, Size A, 50-lb. sack--												
Fla., Round Red, washed	2.66	2.22	2.10	1.77	1.80	-	-	-	-	-	-	-
U.S.No. 1 Size A, 100-lb. sacks washed --												
Ariz., Round Reds	-	-	-	-	3.60	-	-	-	-	-	-	-
Calif., Long White	-	-	-	-	3.61	3.30	3.90	4.40	-	-	-	-
Round Red	-	-	-	-	3.20	3.56	3.90	-	-	-	-	-
Ida., Russet Burbank	3.90	3.71	3.71	3.55	3.79	-	-	-	-	-	3.89	3.86
Ida.-Oreg.,												
Long White	-	-	-	-	-	-	-	2.80	-	-	-	-
Round Red	-	-	-	-	-	-	3.50	3.40	-	-	-	-
Russet Burbank	-	-	-	-	-	-	-	3.95	4.01	3.72	-	-
Minn.,-N.Dak.,												
Round Reds	2.42	2.15	1.92	1.89	2.12	-	-	-	3.25	3.17	3.45	3.26
Wash.,												
Long Whites	-	-	-	-	-	-	-	3.98	-	-	-	-
Russet Burbank	-	-	-	-	-	-	-	4.00	3.69	3.48	3.65	-
Wisc.,												
Round Reds	-	-	-	-	-	-	-	-	2.76	3.03	-	-
<u>Radishes</u>												
<u>New York:</u>												
<u>16-quart basket--</u>												
Fla., Reds, topped, 30's, 8-oz.												
film bags	-	1.50	1.26	-	-	-	-	-	-	-	-	-
" " 30's-6-oz. film bq.	-	-	1.56	1.30	2.04	1.87	-	-	-	-	-	-
Del., Scarlet Globe 30's bchs	-	-	-	-	1.62	.91	-	-	-	-	-	-
N.J., " " 30-36-bunches												
4/5 bushel crate	-	-	-	-	1.50	-	-	-	-	-	-	-
Per bunch	-	-	-	-	.06	.04	.06	.05	.05	.05	.04	-
Ohio, 30's-6-oz. film bags	-	-	-	-	-	1.64	-	-	-	-	-	-
bunched 30's	-	-	-	-	-	-	1.00	1.23	-	-	-	-
<u>Chicago:</u>												
<u>16-quart basket--</u>												
Fla., Reds, topped, 30's, 8-oz.												
film bags	-	1.34	1.51	1.56	2.10	-	-	-	-	1.50	1.20	3.06
Ohio, " " 30's, 8-oz. film bq.	-	-	-	-	-	1.38	1.46	1.47	1.53	1.34	-	-
<u>Rhubarb</u>												
<u>New York:</u>												
Mich., extra fancy, 5-lb. ctn..	1.33	1.11	.92	1.10	-	-	-	-	-	-	-	-
N.J., Per bunch	-	-	-	-	.04	.05	-	-	-	-	-	-
24's, 1-1/9-bu. crt	-	-	-	1.68	-	-	-	-	-	-	-	-
Wash., 15-lb. box	-	-	-	2.65	1.50	-	-	-	-	-	-	-

5/ 2-inch minimum.
6/ 2-1/4-inch minimum.

Table 1.--Continued

VEGETABLES--CONTINUED

Market, Origin and description	Jan.	Feb.	Mar.	Apr.	May	June	July	Aug.	Sept.	Oct.	Nov.	Dec.
- - - Dollars Per Unit - - -												
<u>Rhubarb--Continued</u>												
<u>New York:</u>												
Ill., 35-40-lb. box	-	-	-	-	2.29	1.54	1.87	1.75	1.75	-	-	-
Mich., Extra fancy, 5-lb. ctn..	-	-	.60	.67	-	-	-	-	-	-	-	-
Wash., 15-lb. box, ex. fancy..	-	-	2.45	2.57	-	-	-	-	-	-	-	-
<u>Shallots</u>												
<u>New York:</u>												
La., 8-dozen bchs. crate ...	8.75	8.25	7.88	6.90	-	-	-	-	-	5.75 ^{7/}	5.62 ^{7/}	5.60 ^{7/}
<u>Chicago:</u>												
La., 8-dozen bchs., crate...	8.25	5.50	5.00	5.78	5.25	-	-	-	-	-	-	5.00
<u>Spinach</u>												
<u>New York:</u>												
<u>Savoy type--</u>												
N.J., bushel basket	-	-	-	.75	.72	1.12	1.79	2.21	2.08	-	-	-
N.J., 1-3/5-bushel box	-	-	-	-	-	-	-	-	-	1.25*	1.06*	-
N.Y., bu. basket (Catskill Sect.)	-	-	-	-	-	-	2.24	2.21	1.97	-	-	-
S.C., bushel basket	-	-	2.50	2.13	-	-	-	-	-	-	-	-
Texas, bushel basket	2.19	2.01	2.55	3.00	-	-	-	-	-	-	-	2.32
Va., bushel basket	-	-	-	1.36	-	-	-	-	-	-	-	-
<u>Chicago:</u>												
<u>Bushel basket--</u>												
Ill., Savoy type	-	-	-	-	-	-	-	-	-	1.00	-	-
Ill., Flat type	-	-	-	1.98	2.60	1.82	3.25	3.12	-	-	1.51	1.69
Ill., Semi-curley type	-	-	-	-	-	-	-	2.00	-	-	-	-
Mich., Flat type	-	-	-	-	-	-	-	2.08	2.12	1.62	-	-
Miss., Flat type	-	-	-	2.52	3.10	-	-	-	-	-	-	-
Texas, Flat type	1.80	1.54	1.99	2.00	-	-	-	-	-	-	-	2.33
Wash., Flat type	-	-	-	-	-	-	-	-	-	2.75	-	-
<u>Sweetpotatoes</u>												
<u>New York:</u>												
<u>Bushel basket--</u>												
Md., Maryland Golden	-	-	-	-	-	-	-	-	-	2.04	2.48	2.69
N.J., Orange Jersey type	2.90	3.00	3.00	3.58	3.76	4.34	5.04	-	-	2.82	3.22	3.79
N.J., Yellow Jersey type	3.33	3.62	3.75	4.13	-	-	-	-	-	3.81	4.24	4.65
N.J., Orlis	2.83	-	-	-	-	-	-	-	-	-	-	-
N.C., Porto Rican	4.32	4.27	4.22	4.75	5.36	5.94	6.38	-	3.62	3.31	3.65	4.30
Va., Maryland Golden	-	-	-	-	-	-	-	-	-	2.90	-	-
Va., Oklahoma type	-	-	-	-	-	-	5.50	3.46	2.02	2.00	2.17	2.50
Va., Porto Rico type	-	-	-	-	-	-	-	-	-	2.38	2.30	-
<u>50-lb. crate--</u>												
La., Porto Rican, cured	5.00	5.45	5.44	-	-	-	-	-	-	-	-	-
La., Porto Rican, uncured	-	-	-	-	-	-	6.42	4.19	3.82	-	-	-
<u>Chicago:</u>												
<u>50-lb. crate--</u>												
La., Porto Rican, cured	4.36	4.40	4.38	4.98	5.41	5.78	5.88	-	-	-	5.67	5.39
La., Porto Rican, uncured	-	-	-	-	-	-	5.85	3.79	3.64	3.68	4.10	4.25
Miss., Porto Rican, cured	-	-	-	-	-	-	-	-	-	-	-	4.82
N.J., Orange Jersey bu. bskt.	-	3.58	3.22	-	-	-	-	-	-	-	-	-
Tenn., Porto Rican, cured	3.32	-	-	-	-	-	-	-	-	-	-	-
Tenn., Porto Rican, uncured	-	-	-	-	-	-	-	-	2.92	3.15	4.12	3.75
Texas, Porto Rican, cured	-	-	-	-	-	-	-	-	-	-	5.00	-
Texas, Porto Rican, uncured	-	-	-	-	-	-	-	-	-	3.15	3.12	-
<u>Tomatoes</u>												
<u>New York - Auction average:</u>												
<u>Green Ripes and turning--</u>												
Calif., 6x6, lug box	-	-	-	-	-	-	3.55	5.60	-	4.20	4.88	-
Fla., 6x6 unwrapped, 60-lb. crt	7.00	6.22	5.09	10.51	9.88	8.10	-	-	-	-	9.85	9.68
Ga., 6x6 unwrpd., 60-lb. crt.	-	-	-	-	-	8.70	-	-	-	-	-	-
Pa., 6x6, 60-lb. crate	-	-	-	-	-	-	-	4.50	5.98	-	-	-
S.C., 6x6, 60-lb. crate	-	-	-	-	-	11.90	-	-	-	-	-	-
Texas, 6x6, lug box	-	-	-	-	-	3.78	-	-	-	-	-	-

^{7/} 7-dozen.

Table 1.--Continued

VEGETABLES--CONTINUED

Market, Origin and description	Jan.	Feb.	Mar.	Apr.	May	June	July	Aug.	Sept.	Oct.	Nov.	Dec.
- - - Dollars Per Unit - - -												
<u>Tomatoes Continued</u>												
<u>New York - Auction average:</u>												
<u>Street Sales--</u>												
Conn., 1/2-bu. hamper	-	-	-	-	-	-	-	-	1.88	-	-	-
Fla., 10-lb. bskt. vine ripened sm. & med.	-	1.36	-	-	-	-	-	-	-	-	1.63	1.68
8-lb. bskt vine ripened mod.- lge.	-	1.71	2.08	2.56	3.50	-	-	-	-	-	-	1.89
Mass., 12-qt. bskt. ripe	-	-	-	-	-	-	-	2.00	-	-	-	-
20-lb. box lge size	-	-	-	-	-	-	-	1.95	-	-	-	-
5/9 bushel box	-	-	-	-	-	-	-	-	1.27	-	-	-
N.J., 12-qt. bskt. ripe	-	-	-	-	-	-	1.88	2.04	2.00	-	-	-
Ohio, 8-lb. bskt. greenhouse, mod. size	-	-	-	-	-	-	-	-	-	2.65	2.66	2.74
Va. 12-qt. Trellis grown, mod.-lge.	-	-	-	-	-	2.50	2.00	-	-	-	-	-
20-lb. box Trellis grown, mod.-lge.	-	-	-	-	-	3.62	2.60	-	-	-	-	-
12-qt. basket ripe	-	-	-	-	-	-	1.92	-	-	-	-	-
<u>Chicago:</u>												
<u>Green, ripens and turning--</u>												
Calif., 6x6 & lgr. 30-lb. lug box 8/	-	-	-	-	-	5.75	4.00	2.92	3.85	4.31	4.78	-
6x6 & lgr. 20-lb. lug box 8/	-	-	-	-	-	4.20	3.71	2.75	-	-	-	-
Fla., 6x6 & lgr. 60-lb. crate 8/	8.05	7.60	8.96	13.25	12.83	-	-	-	-	-	-	10.72
10-lb. bskt., vine- ripened	1.94	2.30	2.35	-	-	-	-	-	-	-	-	-
8-lb. basket ripe	1.90	2.01	2.30	2.82	2.88	-	-	-	-	-	-	-
Ill., 10-lb. bskt. ripe	-	-	-	-	-	-	1.64	.80	.70	-	-	-
Midwestern, Greenhouse 8-lb. basket, med. size	-	-	-	-	3.04	2.52	1.79	1.25	-	-	2.58	2.79
Mich., 10-lb. basket ripe	-	-	-	-	-	-	1.38	.96	1.01	-	-	-
Texas, 6x6 & lgr. lug box 8/	-	-	-	-	5.92	6.44	3.25	-	-	-	-	-

8/ 85% or more U. S. No. 1

<u>Eggplant</u>												
<u>New York:</u>												
<u>Bushel basket--</u>												
Fla.,	2.74	3.39	2.48	2.50	4.26	3.54	3.54	-	-	3.70	2.63	3.63
N.J.,	-	-	-	-	-	-	3.58	1.88	1.43	2.10	-	-
<u>Chicago:</u>												
<u>Bushel basket--</u>												
Fla.,	3.31	3.58	2.81	2.75	3.67	3.19	3.70	-	-	3.78	2.86	3.14
Ill.,	-	-	-	-	-	-	3.75	2.12	1.59	1.30	-	-
N.C.,	-	-	-	-	-	-	3.94	-	-	-	-	-
Texas,	-	-	-	-	-	-	-	-	-	3.00	-	-

Table 2.--Auction prices of specified citrus and deciduous fruits in New York City and Chicago, each month, by market, origin, and description, 1957. Weighted average, all grades and sizes 1/

CITRUS FRUITS

Market, Origin and description	Jan.	Feb.	Mar.	Apr.	May	June	July	Aug.	Sept.	Oct.	Nov.	Dec.
-- -- Dollars For Unit -- --												
<u>Grapefruit</u>												
<u>New York:</u>												
<u>Various Varieties--</u>												
Calif., 1/2-box carton.....	-	-	-	-	-	1.87	3.14	2.55	2.03	-	-	-
Fla., 1-3/5 bushel box.....	4.73	4.43	4.51	4.22	4.37	3.98	5.13	4.27	4.83	4.59	4.50	4.42
<u>Chicago:</u>												
<u>Various Varieties--</u>												
Calif., 1/2-box carton.....	-	-	-	-	-	-	2.99	2.30	1.56	-	-	-
Fla., 1-3/5-bushel box.....	4.76	4.58	4.80	4.32	4.55	4.12	4.10	-	4.56	4.72	4.23	4.53
<u>Lemons</u>												
<u>New York:</u>												
Calif., 1/2-box carton.....	4.51	3.41	3.40	3.37	3.94	3.41	2.93	3.40	2.96	3.31	3.83	2.88
<u>Chicago:</u>												
Calif., 1/2-box carton.....	4.52	3.61	3.49	3.13	3.66	3.45	2.96	3.17	3.02	3.88	3.79	3.21
<u>Oranges</u>												
<u>New York:</u>												
Ariz. 1/2-box carton	-	-	-	-	-	-	-	-	-	-	-	-
Calif., Navel, 1/2-box,ctn..	3.37	3.07	3.18	3.29	3.24	2.89	-	-	-	-	4.07	3.85
Valencia,1/2-box,ctn..	-	-	-	-	2.88	2.79	2.86	2.99	3.73	3.79	3.76	2.43
Fla.,Var.varie.,1-3/5-bu.bx.	4.64	5.14	4.92	4.64	4.56	4.50	4.67	5.07	5.69	5.07	3.48	4.56
<u>Chicago:</u>												
Ariz. 1/2-box carton.....	2.72	2.28	2.22	2.68	2.96	2.80	-	-	-	-	3.81	3.79
Calif.,Navel,1/2-box,ctn....	3.36	3.01	3.06	3.19	3.08	2.49	-	-	-	-	3.64	3.97
Valencia,1/2-box,ctn..	-	-	-	2.65	3.01	2.74	2.89	3.10	3.53	3.82	3.34	-
Fla.Var.varie.,1-3/5-bu.bx..	4.10	4.04	4.10	4.29	3.89	4.01	4.47	4.49	-	4.15	3.47	4.61

DECIDUOUS FRUITS

<u>Apples</u>												
<u>New York:</u>												
<u>Boxes, all grades and sizes--</u>												
Calif., Gravenstein	-	-	-	-	-	-	-	4.17	-	-	-	-
Oreg., Delicious 2/.....	5.85	-	-	-	-	-	-	-	4.38	3.81	3.54	3.05
Golden Delicious...	3.93	-	-	-	-	-	-	-	-	-	3.18	2.96
Yellow Newtown.....	-	-	-	-	5.53	-	-	-	-	-	-	-
Wash., Delicious 2/	5.32	4.77	5.07	5.78	5.97	2.96	-	-	5.49	3.55	3.37	3.53
Golden Delicious...	3.93	4.27	4.32	4.89	5.95	-	-	-	3.71	4.03	3.83	3.63
Jonathan	-	-	-	-	-	-	-	-	2.59	-	-	-
Rome Beauty	2.59	-	-	3.63	-	3.16	-	-	-	3.98	3.25	3.15
Winesap	5.11	5.05	5.00	5.35	6.03	7.10	7.38	10.65	-	-	3.40	-
Yellow Newtown	-	-	-	-	5.51	-	-	-	-	-	-	-
<u>Chicago:</u>												
<u>Boxes, all grades and sizes--</u>												
Calif., Gravenstein	-	-	-	-	-	-	-	4.87	-	-	-	-
Oreg., Delicious 2/.....	5.20	-	-	-	-	-	-	-	-	-	-	3.57
Golden Delicious...	4.93	-	-	-	-	-	-	-	-	-	-	3.96
Wash., Delicious 2/.....	5.23	4.83	4.73	5.55	6.86	5.63	-	-	5.62	4.01	3.20	3.33
Golden Delicious...	4.50	4.29	3.68	4.92	4.67	-	-	-	-	4.45	4.52	4.41
Jonathan	2.78	1.94	-	-	-	-	-	-	3.90	2.75	2.58	3.02
Rome Beauty	4.49	4.28	3.43	4.32	2.82	3.25	-	-	-	3.43	3.04	3.10
Winesap	5.19	4.67	4.78	4.95	5.21	6.22	7.42	-	-	-	2.93	2.44
Yellow Newtown	-	-	2.90	4.55	-	-	-	-	-	-	-	-
<u>Apricots</u>												
<u>New York:</u>												
Calif., Royal, lug.....	-	-	-	-	-	3.86	3.91	-	-	-	-	-
Tilton,lug.....	-	-	-	-	-	5.83	4.38	-	-	-	-	-
<u>Chicago:</u>												
Calif., Royal, lug.....	-	-	-	-	-	3.79	3.32	-	-	-	-	-
Tilton,lug.....	-	-	-	-	-	-	3.96	-	-	-	-	-

1/ Compiled by Statistical and Historical Research.
2/ Includes double Red strains.

Table 2.--Continued

DECIDUOUS FRUITS--CONTINUED

Market, Origin, and Description	Jan.	Feb.	Mar.	Apr.	May	June	July	Aug.	Sept.	Oct.	Nov.	Dec.
	Dollars Per Unit											
<u>Cherries</u>												
<u>New York:</u>												
<u>15-pound lug--</u>												
Calif., Bing	-	-	-	-	7.81	5.64	-	-	-	-	-	-
Burbank	-	-	-	-	4.92	-	-	-	-	-	-	-
Chapman	-	-	-	-	4.94	-	-	-	-	-	-	-
Lambert	-	-	-	-	-	5.03	-	-	-	-	-	-
Republican	-	-	-	-	-	4.47	-	-	-	-	-	-
Royal anne	-	-	-	-	-	4.75	-	-	-	-	-	-
Tartarian	-	-	-	-	4.99	2.86	-	-	-	-	-	-
Oreg., Lambert	-	-	-	-	-	-	6.41	-	-	-	-	-
Republican	-	-	-	-	-	-	6.14	-	-	-	-	-
Wash., Bing	-	-	-	-	-	6.20	6.33	-	-	-	-	-
Lambert	-	-	-	-	-	5.33	6.41	-	-	-	-	-
<u>Chicago:</u>												
<u>15-pound lug--</u>												
Calif., Bing	-	-	-	-	7.17	5.34	-	-	-	-	-	-
Burbank	-	-	-	-	5.49	-	-	-	-	-	-	-
Chapman	-	-	-	-	4.88	-	-	-	-	-	-	-
Lambert	-	-	-	-	-	4.95	-	-	-	-	-	-
Republican	-	-	-	-	-	4.82	-	-	-	-	-	-
Tartarian	-	-	-	-	5.07	-	-	-	-	-	-	-
Oreg., Bing	-	-	-	-	-	7.75	5.49	-	-	-	-	-
Lambert	-	-	-	-	-	-	6.30	-	-	-	-	-
Wash., Bing	-	-	-	-	-	5.81	5.55	-	-	-	-	-
Lambert	-	-	-	-	-	5.73	5.89	6.58	-	-	-	-
<u>Grapes</u>												
<u>New York:</u>												
<u>Table Stock--lug--</u>												
Calif., Almerio	4.21	2.90	-	-	-	-	-	2.64	2.36	4.46	4.77	4.77
Black Rose	-	-	-	-	-	-	-	-	-	2.30	-	-
Calmerio	-	-	-	-	-	-	-	-	-	5.54	5.29	6.01
Cardinal	-	-	-	-	-	7.76	5.33	3.16	-	-	-	-
Cornichon	-	-	-	-	-	-	-	-	-	3.04	-	3.12
Delight	-	-	-	-	-	5.50	-	-	-	-	-	-
Emperor	4.27	4.52	4.56	4.13	-	-	-	4.69	3.03	3.11	3.29	3.68
Khandahar	-	-	-	-	-	-	-	-	-	-	-	-
Lady finger	-	-	-	-	-	-	3.92	-	-	-	-	-
Malaga	-	-	-	-	-	-	-	-	2.08	3.19	2.99	2.77
Muscat	-	-	-	-	-	-	-	3.72	3.31	3.98	4.10	2.99
Olivette	-	-	-	-	-	-	-	-	3.42	3.80	3.17	-
Perlette	-	-	-	-	10.78	8.83	6.39	4.08	-	-	-	-
Queen	-	-	-	-	-	-	4.42	2.87	2.18	-	-	-
Red Malaga	-	-	-	-	-	-	6.15	2.77	2.57	2.43	-	-
Ribier	7.32	-	-	-	-	-	7.43	4.80	3.66	3.81	3.98	4.00
Rishbaba	-	-	-	-	-	-	4.11	-	-	-	2.57	2.65
Thompson Seedless...	-	-	-	-	-	7.35	6.38	3.60	3.61	3.30	2.69	-
Tokay	-	-	-	-	-	-	-	-	2.76	3.13	-	-
<u>Chicago:</u>												
<u>Table Stock--lug--</u>												
Calif., Almeria	3.21	-	-	2.03	-	-	-	-	-	3.83	4.31	4.06
Black Rose	-	-	-	-	-	-	-	-	2.50	2.44	-	-
Calmeria	-	-	-	2.00	-	-	-	-	-	4.98	4.88	5.57
Cardinal	-	-	-	-	-	7.50	4.54	2.87	-	-	-	-
Cornichon	-	-	-	-	-	-	-	-	-	2.86	-	-
Emperor	4.32	4.63	4.36	4.49	-	-	-	-	-	3.12	3.07	3.49
Khandahar	-	-	-	-	-	-	-	5.28	3.55	-	-	-
Malaga	-	-	-	-	-	-	-	-	2.60	2.21	2.71	4.05
Muscat	-	-	-	-	-	-	-	-	3.18	3.22	-	3.36
Perlette	-	-	-	-	13.27	8.91	-	-	-	-	-	-
Olivette	-	-	-	-	-	-	-	-	3.56	3.90	4.10	-
Queen	-	-	-	-	-	-	-	-	2.40	2.98	-	-
Red Malaga	-	-	-	-	-	-	5.00	3.11	2.42	-	-	-
Ribier	5.57	-	-	-	-	-	6.85	4.42	3.75	3.39	3.55	4.33
Thompson Seedless...	-	-	-	-	-	7.13	6.03	3.35	3.40	3.62	2.44	-
Tokay	-	-	-	-	-	-	-	-	2.62	2.66	-	-

DECIDUOUS FRUITS--CONTINUED

Market, Origin and description	Jan.	Feb.	Mar.	Apr.	May	June	July	Aug.	Sept.	Oct.	Nov.	Dec.
	- - - Dollars Per Unit - - -											
<u>Nectarines</u>												
<u>New York:</u>												
<u>Crate--</u>												
Calif., Gower	-	-	-	-	-	-	3.97	1.53	-	-	-	-
John River	-	-	-	-	-	3.92	3.83	-	-	-	-	-
Quetta	-	-	-	-	-	-	3.13	2.28	2.91	-	-	-
<u>Chicago:</u>												
<u>Crate--</u>												
Calif., Gower	-	-	-	-	-	-	3.84	-	-	-	-	-
John River	-	-	-	-	-	3.41	3.34	-	-	-	-	-
Quetta	-	-	-	-	-	-	3.12	2.10	1.90	-	-	-
<u>Peaches</u>												
<u>New York:</u>												
<u>Box--</u>												
Calif., Albright.....	-	-	-	-	-	-	-	1.84	1.47	-	-	-
Cling	-	-	-	-	-	-	-	2.64	2.79	2.64	-	-
Elberta	-	-	-	-	-	-	2.32	-	-	-	-	-
Guam	-	-	-	-	-	-	-	-	1.45	-	-	-
Hale	-	-	-	-	-	-	-	-	2.51	-	-	-
Levi Cling	-	-	-	-	-	-	-	-	2.46	2.45	-	-
McDevitt	-	-	-	-	-	-	-	2.76	2.89	2.97	-	-
Percona	-	-	-	-	-	-	2.88	1.72	2.20	-	-	-
Red Bird	-	-	-	-	-	-	-	1.46	-	-	-	-
Rio Oso Gem	-	-	-	-	-	-	-	1.61	-	-	-	-
Wiley	-	-	-	-	-	-	-	1.94	2.15	3.11	-	-
<u>Songer lug--</u>												
Calif., Elberta	-	-	-	-	-	-	2.95	1.64	-	-	-	-
Hale	-	-	-	-	-	-	3.48	2.22	-	-	-	-
Rio Oso Gem	-	-	-	-	-	-	-	2.38	1.98	-	-	-
<u>Chicago:</u>												
<u>Box--</u>												
Calif., Cling	-	-	-	-	-	-	-	2.04	-	-	-	-
Elberta	-	-	-	-	-	-	2.15	1.74	-	-	-	-
Hale	-	-	-	-	-	-	-	1.43	-	-	-	-
Redhaven	-	-	-	-	-	-	2.23	-	-	-	-	-
Rio Oso Gem	-	-	-	-	-	-	-	1.47	-	-	-	-
<u>Songer lug--</u>												
Calif., Hale	-	-	-	-	-	-	2.89	2.22	-	-	-	-
Elberta	-	-	-	-	-	4.77	2.64	1.66	-	-	-	-
Redhaven	-	-	-	-	-	4.13	2.84	-	-	-	-	-
<u>Pears</u>												
<u>New York:</u>												
<u>All grades, box--</u>												
Calif., Bartlett	-	-	-	-	-	-	5.55	4.77	5.60	6.06	5.01	-
Bosc	-	-	-	-	-	-	-	-	4.36	4.93	4.84	4.33
Comice	5.28	-	-	-	-	-	-	-	4.62	5.59	5.27	4.80
D'Anjou	-	-	-	-	-	-	-	3.89	4.40	4.07	4.50	-
Eureka	-	-	-	-	-	-	-	-	4.77	-	-	-
Forelle	-	-	-	-	-	-	-	-	-	6.89	7.25	7.01
Hardy	-	-	-	-	-	-	-	-	3.71	3.93	3.89	-
Seckel	-	-	-	-	-	-	-	-	-	-	5.75	-
Winter Nelis	3.26	-	4.50	5.69	5.12	6.76	-	-	-	-	-	-
Oreg., Bartlett	-	-	-	-	-	-	-	-	4.41	4.23	3.97	3.64
Bosc	4.94	4.27	-	-	-	-	-	-	5.00	5.20	5.03	4.77
Comice	5.06	-	-	-	-	-	-	-	-	-	5.52	4.64
D'Anjou	5.14	4.88	5.20	5.75	5.21	-	-	-	-	4.83	4.74	5.08
Winter Nelis	-	-	-	-	5.42	-	-	-	-	-	-	-
Wash., Bartlett	-	-	-	-	-	-	-	-	-	4.35	-	-
Bosc	4.20	-	4.62	-	-	-	-	-	3.64	4.17	4.35	4.22
Comice	-	-	-	-	-	-	-	-	-	-	4.24	-
D'Anjou	3.75	4.14	3.90	-	4.68	-	-	-	4.58	4.39	4.52	4.61
Flemish Beauty	-	-	-	-	-	-	-	-	3.61	-	3.52	-
<u>Chicago:</u>												
<u>All grades, box--</u>												
Calif., Bartlett	-	-	-	-	-	-	5.27	4.80	5.60	6.26	5.38	-
Bosc	-	-	-	-	-	-	-	-	4.94	4.91	5.12	4.92
Oreg., Bartlett	-	-	-	-	-	-	-	-	5.22	5.08	3.90	-
Bosc	5.23	5.88	6.00	-	-	-	-	-	-	4.80	4.99	4.72
D'Anjou	5.10	5.18	5.34	5.84	6.18	8.27	-	-	-	4.94	4.99	5.08

Table 2.--Continued

DECIDUOUS FRUITS--CONTINUED

Market, Origin and description	Jan.	Feb.	Mar.	Apr.	May	June	July	Aug.	Sept.	Oct.	Nov.	Dec.
- - - Dollars Per Unit - - -												
Pears--Continued												
Chicago:												
All grades, box--												
Wash., Bosc	4.43	-	-	-	-	-	-	-	-	3.68	-	4.34
D'Anjou	5.04	5.18	5.35	5.54	6.03	3.95	-	-	5.16	4.16	4.46	4.56
Flemish Beauty	-	-	-	-	-	-	-	-	3.83	3.44	-	3.59
Pineapples												
New York:												
Crate--												
Puerto Rico	6.50	6.37	4.44	5.19	4.72	5.07	4.60	4.01	5.44	4.42	5.75	6.67
Plums												
New York:												
Crate--												
Calif., Beauty	-	-	-	-	7.91	4.88	3.38	-	-	-	-	-
Becky Smith	-	-	-	-	-	-	6.02	4.68	-	-	-	-
Burbank	-	-	-	-	-	-	4.71	2.86	-	-	-	-
Duarte	-	-	-	-	-	-	5.95	3.53	-	-	-	-
Eldorado	-	-	-	-	-	-	6.81	7.76	-	-	-	-
Formosa	-	-	-	-	-	4.09	4.01	-	-	-	-	-
Gaviota	-	-	-	-	-	-	4.71	1.71	-	-	-	-
Giant	-	-	-	-	-	-	-	2.51	2.92	-	-	-
Kelsey	-	-	-	-	-	-	6.41	4.17	4.51	-	-	-
Late Duarte	-	-	-	-	-	-	-	3.42	3.69	-	-	-
Late Santa Rosa	-	-	-	-	-	-	6.70	4.63	4.71	-	-	-
Late Tragedy	-	-	-	-	-	-	5.49	3.79	-	-	-	-
President	-	-	-	-	-	-	7.19	3.86	4.10	4.64	-	-
Santa Rosa	-	-	-	-	-	5.70	5.67	-	-	-	-	-
Sharkey	-	-	-	-	-	-	-	3.32	-	-	-	-
Sugar	-	-	-	-	-	-	5.37	4.37	-	-	-	-
Tragedy	-	-	-	-	-	-	5.81	-	-	-	-	-
Wickson	-	-	-	-	-	-	5.77	3.22	-	-	-	-
Chicago:												
Crate--												
Calif., Beauty	-	-	-	-	6.53	4.45	3.72	-	-	-	-	-
Becky Smith	-	-	-	-	-	-	5.61	-	-	-	-	-
Burbank	-	-	-	-	-	-	4.50	-	-	-	-	-
Duarte	-	-	-	-	-	-	5.65	3.61	-	-	-	-
Eldorado	-	-	-	-	-	-	6.14	7.15	-	-	-	-
Formosa	-	-	-	-	-	4.01	4.01	-	-	-	-	-
Gaviota	-	-	-	-	-	-	4.14	3.34	-	-	-	-
Giant	-	-	-	-	-	-	-	2.49	2.03	-	-	-
Kelsey	-	-	-	-	-	-	-	4.14	-	-	-	-
Late Duarte	-	-	-	-	-	-	-	3.38	3.67	-	-	-
Late Santa Rosa	-	-	-	-	-	-	7.11	5.09	-	-	-	-
Late Tragedy	-	-	-	-	-	-	6.85	3.73	-	-	-	-
President	-	-	-	-	-	-	5.90	3.84	3.81	-	-	-
Santa Rosa	-	-	-	-	-	5.25	5.64	-	-	-	-	-
Sharkey	-	-	-	-	-	-	5.37	3.61	-	-	-	-
Sugar	-	-	-	-	-	-	4.19	4.16	-	-	-	-
Tragedy	-	-	-	-	-	-	5.52	4.54	-	-	-	-
Wickson	-	-	-	-	-	-	5.29	3.22	-	-	-	-
Prunes, Fresh												
New York:												
1/2-bushel basket, Italian 3/												
Idaho	-	-	-	-	-	-	-	3.60	2.79	3.76	-	-
Wash.	-	-	-	-	-	-	-	4.09	2.89	-	-	-
Chicago:												
1/2-bushel basket, Italian 3/												
Idaho	-	-	-	-	-	-	-	3.32	2.61	-	-	-
Wash.	-	-	-	-	-	-	-	3.58	2.54	-	-	-

3/ Includes Domaris and Wotherspoon Varieties.

Table 3.—Average prices of specified fruits and vegetables at leading shipping points, each month by description of sale, 1957

(Shipping point prices in this table are simple averages of the mid-points of the daily range and are only for months during which market news stations were in operation in the specified districts.)

BERRIES

Shipping point and description of sale	Jan.	Feb.	Mar.	Apr.	May	June	July	Aug.	Sept.	Oct.	Nov.	Dec.
- - - Dollars Per Unit - - -												
<u>Blueberries</u>												
<u>Michigan:</u>												
<u>Benton Harbor</u>												
<u>Cash market growers' sales--</u>												
<u>Cultivated, film wrapped</u>												
12 pint crate	-	-	-	-	-	-	3.43	-	-	-	-	-
8 quart basket	-	-	-	-	-	-	3.82	-	-	-	-	-
<u>Raspberries</u>												
<u>Michigan:</u>												
<u>Benton Harbor</u>												
<u>Cash market growers' sales--</u>												
2 1/2 pint crate, Black	-	-	-	-	-	-	4.71	-	-	-	-	-
" " " Red	-	-	-	-	-	-	5.97	-	-	-	-	-
" " carton, Red	-	-	-	-	-	-	6.66	-	-	-	-	-
12 pint carton, Red	-	-	-	-	-	-	3.40	-	-	-	-	-
<u>Strawberries</u>												
<u>Arkansas:</u>												
<u>Price to growers--</u>												
<u>Bald Knob Area</u>												
<u>2 1/2-quart crate--</u>												
Blakemore, U.S. No. 1	-	-	-	-	5.49	-	-	-	-	-	-	-
" " U.S. Combination	-	-	-	-	5.11	-	-	-	-	-	-	-
" " U.S. No. 2	-	-	-	-	4.95	-	-	-	-	-	-	-
<u>16-quart crate--</u>												
Blakemore, U.S. No. 1	-	-	-	-	4.26	-	-	-	-	-	-	-
" " U.S. Combination	-	-	-	-	3.83	-	-	-	-	-	-	-
" " U.S. No. 2	-	-	-	-	3.39	-	-	-	-	-	-	-
<u>Marshall Area:</u>												
<u>2 1/2-quart crate--</u>												
Blakemore, U.S. No. 1	-	-	-	-	5.50	-	-	-	-	-	-	-
" " U.S. Combination	-	-	-	-	4.75	-	-	-	-	-	-	-
" " U.S. No. 2	-	-	-	-	4.08	-	-	-	-	-	-	-
<u>Northwest Area:</u>												
<u>2 1/2-quart crate--</u>												
Blakemore, U.S. Combination	-	-	-	-	5.47	-	-	-	-	-	-	-
" " U.S. No. 2	-	-	-	-	4.92	-	-	-	-	-	-	-
" " Unclassified	-	-	-	-	4.36	-	-	-	-	-	-	-
<u>California:</u>												
<u>Central Points--</u>												
<u>Sales f.o.b. shipping point,</u>												
<u>including precooling and dry ice--</u>												
<u>University Varieties,</u>												
12-pint tray	-	-	-	-	2.34	2.02	2.15	-	-	-	-	-
<u>Florida:</u>												
<u>Auction sales--price to growers--</u>												
<u>Missionary & No. 90, per pint--</u>												
Dover26	.24	.27	-	-	-	-	-	-	-	-	-
Plant City26	.24	.29	-	-	-	-	-	-	-	-	-
<u>Indiana:</u>												
<u>Floyds Knob District:</u>												
<u>Sales f.o.b. shipping point</u>												
<u>16-quart crate--</u>												
Beauty, U.S. No. 1	-	-	-	-	4.75	-	-	-	-	-	-	-
" " U.S. No. 2	-	-	-	-	3.48	-	-	-	-	-	-	-
<u>Kentucky:</u>												
<u>Louisville</u>												
<u>Sale f.o.b. shipping point</u>												
<u>Paducah & So. Central Ky. pts:</u>												
<u>2 1/2-quart crate--</u>												
Blakemore, U.S. No. 1	-	-	-	-	5.21	-	-	-	-	-	-	-
" " U.S. No. 2	-	-	-	-	4.02	-	-	-	-	-	-	-

Table 3.--Continued

BERRIES--CONTINUED

Shipping point and description of sale	Jan.	Feb.	Mar.	Apr.	May	June	July	Aug.	Sept.	Oct.	Nov.	Dec.
- - - Dollars Per Unit - - -												
<u>Strawberries--Continued</u>												
<u>Kentucky:--Continued</u>												
<u>Louisville</u>												
<u>Sales f.o.b. shipping point</u>												
<u>Paducah & So. Central Ky.pts:</u>												
<u>24-quart crate--</u>												
Beauty, U.S. No. 1	-	-	-	-	5.83	-	-	-	-	-	-	-
" U.S. No. 2	-	-	-	-	4.65	-	-	-	-	-	-	-
<u>16-quart crate-U.S. No. 1--</u>												
Blakemore	-	-	-	-	3.32	-	-	-	-	-	-	-
Pocahontas	-	-	-	-	3.32	-	-	-	-	-	-	-
<u>Central Area:</u>												
<u>24-quart crates--</u>												
Blakemore	-	-	-	-	6.00	-	-	-	-	-	-	-
Beauty	-	-	-	-	7.12	-	-	-	-	-	-	-
Pocahontas	-	-	-	-	6.44	-	-	-	-	-	-	-
<u>16-quart crates-U.S. No. 1--</u>												
Blakemore	-	-	-	-	4.10	-	-	-	-	-	-	-
Beauty	-	-	-	-	4.70	-	-	-	-	-	-	-
" U.S. 2	-	-	-	-	3.31	-	-	-	-	-	-	-
<u>Louisiana:</u>												
<u>Hammond</u>												
<u>Sales f.o.b. cash track--</u>												
<u>Klondike and Klonmore</u>												
<u>24-pint crate--</u>												
U.S. No. 1	-	-	7.88	6.62	3.70	-	-	-	-	-	-	-
U.S. Combination	-	-	7.13	7.13	-	-	-	-	-	-	-	-
<u>Michigan:</u>												
<u>Benton Harbor</u>												
<u>Cash market growers' sales--</u>												
<u>16-quart crate--</u>												
Premier	-	-	-	-	-	4.10	-	-	-	-	-	-
Robinson	-	-	-	-	-	4.53	-	-	-	-	-	-
<u>Alcona District:</u>												
Robinson	-	-	-	-	-	-	5.07	-	-	-	-	-
<u>Houghton District:</u>												
Robinson	-	-	-	-	-	-	4.87	-	-	-	-	-
<u>North Carolina:</u>												
<u>Auction-Price to growers--</u>												
<u>Various varieties,</u>												
<u>24-quart crate--</u>												
Chadburn	-	-	-	8.72	7.21	-	-	-	-	-	-	-
Tabor City	-	-	-	4.15	4.18	-	-	-	-	-	-	-
Wellace	-	-	-	6.70	-	-	-	-	-	-	-	-
<u>Virginia:</u>												
<u>Eastern Shore--Auction-price to growers--</u>												
<u>Various varieties,</u>												
<u>16-quart crate--</u>												
Emore	-	-	-	-	4.42	-	-	-	-	-	-	-
Hopeton	-	-	-	-	3.39	-	-	-	-	-	-	-
Oak Hall	-	-	-	-	3.72	-	-	-	-	-	-	-
Onley	-	-	-	-	3.76	-	-	-	-	-	-	-
<u>Apples</u>												
<u>Michigan:</u>												
<u>Benton Harbor</u>												
<u>Cash market growers' sales--</u>												
<u>Dushel basket, U.S. No. 1,</u>												
<u>2-1/2 in. up unless stated--</u>												
Alexandria	-	-	-	-	-	-	3.53	-	-	-	-	-
Chenango, 2-1/4 in. up	-	-	-	-	-	-	4.33	-	-	-	-	-
Chenango,	-	-	-	-	-	-	4.63	3.01	-	-	-	-
Cortland,	-	-	-	-	-	-	-	2.09	-	-	-	-
Delicious	-	-	-	-	-	-	-	2.70	2.46	-	-	-
Duchess,	-	-	-	-	-	-	2.32	-	-	-	-	-

Table 3.--Continued

OTHER FRUITS--CONTINUED

Shipping point and description of sale	Jan.	Feb.	Mar.	Apr.	May	June	July	Aug.	Sept.	Oct.	Nov.	Dec.
--	------	------	------	------	-----	------	------	------	-------	------	------	------

--- Dollars Per Unit ---

Apples--Continued

Michigan:--Continued

Benton Harbor

Cash market growers' sales--

Bushel basket, U.S. No. 1,

2-1/2 in. up unless stated --

Duchess, 2-1/4 in. up	-	-	-	-	-	-	2.98	1.99	-	-	-	-
Golden Delicious,	-	-	-	-	-	-	-	-	2.88	-	-	-
Grimes Golden,	-	-	-	-	-	-	-	-	2.19	-	-	-
2-1/4 in. up	-	-	-	-	-	-	-	-	2.01	1.97	-	-
Jonathan	-	-	-	-	-	-	-	-	2.46	1.98	-	-
2-1/4 in. up	-	-	-	-	-	-	-	-	2.50	1.92	-	-
Maiden Blush, 2-1/4 in. up ...	-	-	-	-	-	-	-	2.56	2.12	-	-	-
McIntosh,	-	-	-	-	-	-	-	-	2.04	2.06	-	-
2-1/4 in. up	-	-	-	-	-	-	-	-	2.00	-	-	-
Red Astrachan, 2-1/4 in. up ..	-	-	-	-	-	-	-	3.02	-	-	-	-
Red Delicious,	-	-	-	-	-	-	-	-	3.70	3.10	-	-
Red Rome,	-	-	-	-	-	-	-	-	-	2.64	-	-
Red Stayman,	-	-	-	-	-	-	-	-	-	2.37	-	-
Rome,	-	-	-	-	-	-	-	-	-	2.07	-	-
Stayman,	-	-	-	-	-	-	-	-	-	2.07	-	-
Transparent, 2 in. up	-	-	-	-	-	-	2.48	2.09	-	-	-	-
Transparent, 2-1/4 in. up	-	-	-	-	-	-	3.15	2.41	-	-	-	-
Twenty Ounce	-	-	-	-	-	-	-	-	2.39	2.11	-	-
Turley-winesap	-	-	-	-	-	-	-	-	-	2.33	-	-
Wealthy,	-	-	-	-	-	-	-	2.56	2.01	-	-	-
2-1/4 in. up	-	-	-	-	-	-	-	2.32	1.97	-	-	-
Williams Rud,	-	-	-	-	-	-	-	5.27	-	-	-	-
Wolf River,	-	-	-	-	-	-	-	3.49	2.68	-	-	-

Michigan:

Benton Harbor

West Michigan Points

Sales f.o.b. shipping point--

U.S. No. 1 Bushel basket and Eastern crate--

2-1/2 in. up, unless stated--

Delicious,	-	-	-	-	-	-	-	-	2.60	2.72	2.57	-
Golden Delicious,	-	-	-	-	-	-	-	-	2.98	-	-	-
Grimes Golden, 2-1/4 in. up...	-	-	-	-	-	-	-	-	2.06	-	-	-
Jonathan,	-	-	-	-	-	-	-	-	2.06	2.07	-	-
2-1/4 in. up	2.75	-	-	-	-	-	-	-	2.31	2.07	2.19	2.22
McIntosh,	-	-	-	-	-	-	-	-	2.13	2.25	2.35	2.34
Red Delicious,	-	-	-	-	-	-	-	3.68	3.18	3.12	-	-
Red Rome,	-	-	-	-	-	-	-	-	2.86	2.87	2.74	-
Red Stayman,	-	-	-	-	-	-	-	-	2.43	2.69	2.52	-
Stayman,	-	-	-	-	-	-	-	-	2.27	2.31	-	-
Turley-winesap,	-	-	-	-	-	-	-	-	-	-	-	2.50
Wealthy,	-	-	-	-	-	-	-	2.06	-	-	-	-

Bushel carton--

Cortland,	-	-	-	-	-	-	-	-	-	-	-	1.83
Delicious,	3.69	3.80	3.66	-	-	-	-	-	-	-	-	-
Golden Delicious,	3.45	-	-	-	-	-	-	-	-	-	-	-
Jonathan, 2-1/4 in. up	2.79	3.39	-	-	-	-	-	-	-	2.19	2.14	2.01
McIntosh,	2.74	2.91	-	-	-	-	-	-	-	2.57	2.64	-
2-1/4 in. up	2.39	2.52	-	-	-	-	-	-	-	-	-	-
Northern Spy,	2.52	2.64	-	-	-	-	-	-	-	-	-	-
Red Delicious,	4.70	4.76	4.63	-	-	-	-	-	-	-	-	-
Red Rome,	3.70	-	-	-	-	-	-	-	-	-	-	-
Winesap,	3.10	-	-	-	-	-	-	-	-	-	-	-

New York:

Rochester, Western & Central Points:

Sales f.o.b. shipping point and

delivered sales shipping point basis--

U.S. No. 1 2-1/4 in. up--

12-3-lb. film bags--

Cortland,	2.82	-	-	-	-	-	-	-	-	2.55	2.50	2.45
Delicious,	4.23	4.34	-	-	-	-	-	-	-	-	-	-

Table 3.--Continued

OTHER FRUITS--CONTINUED

Shipping point and description of sale	Jan.	Feb.	Mar.	Apr.	May	June	July	Aug.	Sept.	Oct.	Nov.	Dec.
- - - Dollars Per Unit - - -												
<u>Apples--Continued</u>												
<u>New York:--Continued</u>												
<u>Rochester, Western & Central Points</u>												
<u>Sales f.o.b. shipping point and delivered sales shipping point basis--</u>												
<u>U.S. No. 1 2-1/4 in. up--</u>												
<u>12-3-lb. film bags--</u>												
McIntosh,	3.07	3.18	3.48	3.69	-	-	-	-	2.86	2.72	2.65	2.58
Red Delicious,	4.44	4.50	4.52	4.88	-	-	-	-	-	3.72	-	-
Red Rome,	3.59	3.54	3.50	3.87	-	-	-	-	-	-	-	-
Wealthy,	-	-	-	-	-	-	-	-	2.72	-	-	-
<u>8-5-lb. film bag--</u>												
Cortland,	2.91	-	-	-	-	-	-	-	-	-	-	-
<u>9-4-lb. film bag--</u>												
McIntosh,	-	-	-	-	-	-	-	-	-	-	2.60	2.59
Red Delicious,	-	-	-	-	-	-	-	-	-	-	-	3.15
Red Rome,	3.61	3.56	3.52	4.04	-	-	-	-	-	-	-	3.00
<u>Martinsburg, W. Va.</u>												
<u>Appalachian District--</u>												
<u>Sales f.o.b. shipping point--</u>												
<u>U.S. Fancy, 2-1/2 in. up, unless stated--</u>												
<u>Bushel basket--</u>												
Delicious,	3.72	3.76	-	-	-	-	-	-	-	-	2.65	-
Delicious, U.S. No. 1	-	-	3.46	-	-	-	-	-	-	-	-	-
Golden Delicious,	3.45	3.25	3.50	-	-	-	-	-	-	3.48	-	-
Golden Delicious, U.S. No. 1 ..	-	-	-	-	-	-	-	-	-	3.32	-	-
Red Delicious,	3.81	3.75	-	-	-	-	-	-	3.92	3.43	2.75	3.34
Red Delicious, U.S. No. 1	-	-	-	-	-	-	-	-	-	-	-	2.66
Red Rome,	3.12	3.23	-	-	-	-	-	-	-	-	2.69	-
Red Stayman,	3.05	2.81	-	-	-	-	-	-	-	-	2.59	2.58
Red York,	3.25	2.83	2.85	-	-	-	-	-	-	2.75	2.80	2.74
Rome,	-	3.17	3.24	-	-	-	-	-	-	-	-	-
Stayman,	3.07	2.83	2.72	-	-	-	-	-	-	3.00	-	-
Stayman, U.S. No. 1	3.05	2.72	2.72	-	-	-	-	-	-	-	-	2.38
Winesap,	3.79	3.68	3.82	-	-	-	-	-	-	-	-	3.60
York,	3.18	2.88	-	-	-	-	-	-	-	-	2.71	2.62
<u>N.W. Box--U.S. Fancy, 1 3/8's & lgr.--</u>												
Delicious,	4.81	4.92	-	-	-	-	-	-	-	3.47	3.29	2.88
Golden Delicious,	4.26	4.02	3.94	-	-	-	-	-	-	3.99	4.00	4.05
Red Delicious,	5.36	4.97	5.06	-	-	-	-	-	4.27	3.78	3.75	3.75
Red Rome,	3.95	3.90	3.79	-	-	-	-	-	-	2.93	2.99	2.99
Red Stayman,	3.71	3.67	-	-	-	-	-	-	3.67	3.34	2.95	2.83
Red York,	3.68	3.44	3.37	-	-	-	-	-	-	3.04	3.00	3.11
Rome,	3.80	3.64	3.35	-	-	-	-	-	-	-	-	-
Stayman,	3.68	3.42	-	-	-	-	-	-	2.94	2.83	-	-
Winesap,	4.42	4.45	4.59	-	-	-	-	-	-	3.85	-	3.73
York,	3.34	3.31	3.11	-	-	-	-	-	-	-	-	2.76
<u>Washington:</u>												
<u>Yakima Valley:</u>												
<u>Sales f.o.b. shipping point--</u>												
<u>Wrapped box--Extra Fancy, 1 3/8's & lgr.--</u>												
Delicious,	5.16	5.15	5.09	-	-	-	-	-	-	2.81	2.39	2.64
Jonathan,	-	-	-	-	-	-	-	-	3.03	2.20	-	-
Red Delicious,	5.78	5.93	5.98	-	-	-	-	-	4.28	3.92	3.62	3.85
Rome Beauty,	4.18	4.18	-	-	-	-	-	-	-	-	-	-
Winesap,	4.71	4.72	.72	5.01	5.54	-	-	-	-	-	3.10	3.05
Yellow Newton,	-	-	-	4.90	-	-	-	-	-	-	-	-
<u>Apricots</u>												
<u>Washington:</u>												
<u>Yakima Valley:</u>												
<u>Sales f.o.b. shipping point--</u>												
<u>Wash. No. 1--</u>												
Moorpark, 12-lb. lug	-	-	-	-	-	-	1.12	-	-	-	-	-
14-lb. lug	-	-	-	-	-	-	1.19	-	-	-	-	-

Table 3.--Continued

OTHER FRUITS--CONTINUED

Shipping point and description of sale	Jan.	Feb.	Mar.	Apr.	May.	June	July	Aug.	Sept.	Oct.	Nov.	Dec.
- - - Dollars Per Unit - - -												
<u>Cherries</u>												
<u>Washington:</u>												
<u>Yakima Valley</u>												
<u>Sales f.o.b. shipping point--</u>												
<u>U.S. No. 1--</u>												
<u>15-lb. lug--double faced--</u>												
<u>Ring:</u>												
10 row	-	-	-	-	-	5.80	-	-	-	-	-	-
11 row	-	-	-	-	-	5.30	-	-	-	-	-	-
12 row	-	-	-	-	-	4.80	-	-	-	-	-	-
<u>Loose-pack--</u>												
20-lb., 12 row & lgr.	-	-	-	-	-	5.84	5.72	-	-	-	-	-
12-lb., 13 row	-	-	-	-	-	2.43	2.59	-	-	-	-	-
<u>Lambert-- Loose-pack</u>												
20-lb., 12 row & lgr.	-	-	-	-	-	-	5.74	-	-	-	-	-
12-lb., 12-13 row	-	-	-	-	-	2.38	2.59	-	-	-	-	-
<u>Grapes</u>												
<u>California:</u>												
<u>Bakersfield & Kern Co. Points:</u>												
<u>Sales f.o.b. shipping point</u>												
<u>and sales to local buyers--</u>												
<u>U.S. No. 1, 28-lb. lug--</u>												
Cardinal,	-	-	-	-	-	-	4.03	-	-	-	-	-
Red Malaga,	-	-	-	-	-	-	3.48	2.21	-	-	-	-
Ribier,	-	-	-	-	-	-	4.85	3.32	-	-	-	-
Thompson Seedless	-	-	-	-	-	-	4.28	2.44	-	-	-	-
<u>Fresno & Central Calif. Points:</u>												
<u>Sales f.o.b. shipping point--</u>												
<u>U.S. No. 1, 28-lb. lug:</u>												
Almeria,	-	-	-	-	-	-	-	-	-	3.29	3.60	3.86
Emperor,	3.21	3.49	-	-	-	-	-	-	-	2.17	2.28	2.45
Italies,	-	-	-	-	-	-	-	2.50	2.02	-	-	-
Mandhar,	-	-	-	-	-	-	-	2.72	-	-	-	-
Lady Finger,	-	-	-	-	-	-	-	2.72	2.78	-	-	-
Olivettes,	-	-	-	-	-	-	-	-	2.67	2.62	-	-
Red Malaga,	-	-	-	-	-	-	-	2.01	-	-	-	-
Ribier,	-	-	-	-	-	-	-	3.04	2.56	2.51	2.71	2.85
Rush Baba,	-	-	-	-	-	-	-	2.81	2.73	-	-	-
Thompson Seedless,	-	-	-	-	-	-	-	2.20	2.28	2.49	2.31	-
<u>Lodi District:</u>												
<u>Sales f.o.b. shipping point--</u>												
<u>U.S. No. 1, 28-lb. lug--</u>												
Tokay,	-	-	-	-	-	-	-	2.15	1.69	2.10	-	-
<u>Michigan:</u>												
<u>Benton Harbor:</u>												
<u>Cash market growers' sales--</u>												
<u>Concord:</u>												
Fancy table, 8-2-qt. basket crt.	-	-	-	-	-	-	-	-	2.32	2.38	-	-
4-qt. basket	-	-	-	-	-	-	-	-	.39	.41	-	-
U.S. No. 1, 12-qt. basket	-	-	-	-	-	-	-	-	.67	.84	-	-
U.S. No. 2, 12-qt. basket	-	-	-	-	-	-	-	-	.60	.72	-	-
<u>Nectarines</u>												
<u>California:</u>												
<u>San Joaquin Valley Points:</u>												
<u>Sales f.o.b. shipping point--</u>												
<u>4-basket crate--</u>												
John River, 4 x 4's	-	-	-	-	-	2.55	-	-	-	-	-	-
Gower, 4 x 4's	-	-	-	-	-	-	3.29	-	-	-	-	-
4 x 5's	-	-	-	-	-	-	2.50	-	-	-	-	-
Sunrise, 4 x 4's	-	-	-	-	-	3.69	-	-	-	-	-	-
4 x 5's	-	-	-	-	-	3.12	-	-	-	-	-	-

Table 3.--Continued

OTHER FRUITS---CONTINUED

Shipping point and description of sale	Jan.	Feb.	Mar.	Apr.	May	June	July	Aug.	Sept.	Oct.	Nov.	Dec.
- - - Dollars Per Unit - - -												
<u>Nectarines--Continued</u>												
California:--Continued												
San Joaquin Valley Points:												
Sales f.o.b. shipping point--												
2-layer lug-cup pack--												
Early LeGrand, 96's	-	-	-	-	-	-	3.38	-	-	-	-	-
" " 80-84's	-	-	-	-	-	-	3.91	-	-	-	-	-
" " 70's & lgr.	-	-	-	-	-	-	4.40	-	-	-	-	-
LeGrand, 96's	-	-	-	-	-	-	2.68	-	-	-	-	-
" 80-84's	-	-	-	-	-	-	2.93	2.03	-	-	-	-
" 70's & lgr.	-	-	-	-	-	-	3.42	2.47	-	-	-	-
Late LeGrand, 80-84's	-	-	-	-	-	-	-	2.15	-	-	-	-
" " 70's & lgr.	-	-	-	-	-	-	-	2.74	-	-	-	-
Sun Grand, 96's	-	-	-	-	-	-	3.96	-	-	-	-	-
" " 80-84's	-	-	-	-	-	-	4.42	-	-	-	-	-
" " 70's & lgr.	-	-	-	-	-	-	4.96	-	-	-	-	-
Sunrise, 96's & smlr.	-	-	-	-	-	3.12	-	-	-	-	-	-
" 84's & lgr.	-	-	-	-	-	3.68	-	-	-	-	-	-
Star Grand, 96's	-	-	-	-	-	-	4.25	-	-	-	-	-
" " 80-84's	-	-	-	-	-	-	4.75	-	-	-	-	-
" " 70's & lgr.	-	-	-	-	-	-	5.25	-	-	-	-	-
<u>Peaches</u>												
Alabama:												
Chilton County Points--												
Sales f.o.b. shipping points--												
U.S. No. 1, 2 in. up.												
1/2-bushel basket--												
Dixie Gem	-	-	-	-	-	3.22	-	-	-	-	-	-
Dixie Reds,	-	-	-	-	-	4.34	-	-	-	-	-	-
Early Red Frees,	-	-	-	-	-	3.61	-	-	-	-	-	-
Golden Jubilee,	-	-	-	-	-	2.92	-	-	-	-	-	-
Halehaven,	-	-	-	-	-	-	2.24	-	-	-	-	-
Redhaven,	-	-	-	-	-	3.27	-	-	-	-	-	-
Bushel basket--												
Elberta,	-	-	-	-	-	-	4.88	-	-	-	-	-
Halehaven,	-	-	-	-	-	-	4.47	-	-	-	-	-
Southland,	-	-	-	-	-	-	3.91	-	-	-	-	-
Sullivan Elberta,	-	-	-	-	-	-	5.10	-	-	-	-	-
Arkansas:												
Nashville Area--												
Sales f.o.b. shipping point--												
U.S. No. 1, 2 in. up.												
1/2-bushel basket--												
Burbank Elberta,	-	-	-	-	-	-	2.17	-	-	-	-	-
Dixie Gem,	-	-	-	-	-	3.05	2.28	-	-	-	-	-
Dixie Red,	-	-	-	-	-	3.02	2.28	-	-	-	-	-
Early Rose,	-	-	-	-	-	3.00	-	-	-	-	-	-
Fair Beauty,	-	-	-	-	-	3.07	2.21	-	-	-	-	-
Halehaven,	-	-	-	-	-	-	2.12	-	-	-	-	-
Redhaven,	-	-	-	-	-	3.02	-	-	-	-	-	-
Bushel basket--												
Burbank Elberta,	-	-	-	-	-	-	3.91	-	-	-	-	-
Fair Beauty,	-	-	-	-	-	-	3.72	-	-	-	-	-
Elberta,	-	-	-	-	-	-	3.91	-	-	-	-	-
Halehaven,	-	-	-	-	-	-	3.81	-	-	-	-	-
Sullivan Elberta,	-	-	-	-	-	-	4.68	-	-	-	-	-
California:												
San Joaquin Valley Points												
Sales f.o.b. shipping point--												
2-layer lug-cup pack--												
Blazing Gold, 84's & lgr.	-	-	-	-	-	2.99	-	-	-	-	-	-
" " 88's-96's	-	-	-	-	-	2.09	-	-	-	-	-	-
" " 70's & lgr.	-	-	-	-	-	2.62	-	-	-	-	-	-
Early Elberta, 70's & lgr.	-	-	-	-	-	-	1.81	-	-	-	-	-
" "Pch box, 65's & lgr..	-	-	-	-	-	-	1.30	-	-	-	-	-
Elberta, 70's & lgr.	-	-	-	-	-	-	-	1.49	-	-	-	-
" Pch box, 65's & lgr.	-	-	-	-	-	-	1.29	1.25	-	-	-	-
Fay Elberta, Pch box, 65's & lgr.	-	-	-	-	-	-	-	1.25	-	-	-	-

Table 3.--Continued

OTHERS FRUITS--CONTINUED

Shipping point and description of sale	Jan.	Feb.	Mar.	Apr.	May	June	July	Aug.	Sept.	Oct.	Nov.	Dec.
- - - Dollars Per Unit - - -												
<u>Peaches--Continued</u>												
<u>California: --Continued</u>												
<u>San Joaquin Valley Points</u>												
<u>Sales f.o.b. shipping point--</u>												
<u>2-layer lug-cup pack--</u>												
Gold Dust, 84's & lgr.	-	-	-	-	-	2.52	-	-	-	-	-	-
" " 88's-96's	-	-	-	-	-	1.73	-	-	-	-	-	-
" " 70's & lgr.	-	-	-	-	-	2.33	-	-	-	-	-	-
Hales, 70's & lgr.	-	-	-	-	-	-	2.33	1.62	-	-	-	-
" Sanger lug	-	-	-	-	-	-	2.15	1.62	-	-	-	-
Merrill Beauty, 80-88's	-	-	-	-	-	2.27	-	-	-	-	-	-
" " 70's & lgr.	-	-	-	-	-	2.73	-	-	-	-	-	-
Merrill Gems, 80-88's	-	-	-	-	-	2.91	-	-	-	-	-	-
" " 70's & lgr.	-	-	-	-	-	3.31	-	-	-	-	-	-
Redheaven, 84's & lgr.	-	-	-	-	-	2.41	1.59	-	-	-	-	-
" 70's & lgr.	-	-	-	-	-	2.94	2.09	-	-	-	-	-
Rio Oso Gems, 70's & lgr.	-	-	-	-	-	-	-	1.82	-	-	-	-
" " Sanger lug	-	-	-	-	-	-	-	1.79	-	-	-	-
Robbins, 96's	-	-	-	-	-	2.31	-	-	-	-	-	-
<u>Colorado:</u>												
<u>Palisade District:</u>												
<u>Sales f.o.b. shipping point and delivered sale's shipping point basis--</u>												
<u>U.S. No. 1 wrapped--</u>												
<u>Elberta--</u>												
bu-basket, 2-1/4 in. up	-	-	-	-	-	-	-	-	3.28	-	-	-
box 70's & lgr.	-	-	-	-	-	-	-	-	1.43	-	-	-
<u>Georgia:</u>												
<u>Nacon & Georgia Points--</u>												
<u>Sales f.o.b. shipping point--</u>												
<u>U.S. No. 1 (incl. U.S. Extra No. 1)</u>												
<u>2-in. up. unless stated--</u>												
<u>1/2-bushel basket--</u>												
Dixie Gem,	-	-	-	-	-	3.19	2.12	-	-	-	-	-
" " 1-7/8 in. up.	-	-	-	-	-	2.73	-	-	-	-	-	-
Dixie Reds,	-	-	-	-	-	4.64	-	-	-	-	-	-
" " 1-7/8 in. up.	-	-	-	-	-	4.06	-	-	-	-	-	-
Duke of Georgia, 1-7/8 in. up ..	-	-	-	-	-	4.19	-	-	-	-	-	-
Hilands,	-	-	-	-	-	5.38	-	-	-	-	-	-
" 1-7/8 in. up	-	-	-	-	-	5.16	-	-	-	-	-	-
Hileys,	-	-	-	-	-	3.14	-	-	-	-	-	-
Pearson Hileys,	-	-	-	-	-	3.02	-	-	-	-	-	-
Red Cups,	-	-	-	-	-	4.62	-	-	-	-	-	-
Southland,	-	-	-	-	-	3.50	2.15	-	-	-	-	-
" 1-7/8 in. up	-	-	-	-	-	2.84	-	-	-	-	-	-
Sullivan Elberta,	-	-	-	-	-	-	2.75	-	-	-	-	-
<u>3/4-bushel basket--</u>												
Dixie Gems,	-	-	-	-	-	4.34	-	-	-	-	-	-
Early Elberta,	-	-	-	-	-	-	3.28	-	-	-	-	-
Elberta,	-	-	-	-	-	-	3.45	-	-	-	-	-
Sullivan Elberta,	-	-	-	-	-	-	3.73	-	-	-	-	-
<u>Bushel Basket--</u>												
Elberta,	-	-	-	-	-	-	4.50	-	-	-	-	-
Sullivan Elberta,	-	-	-	-	-	-	4.86	-	-	-	-	-
<u>Michigan:</u>												
<u>West Michigan Points:</u>												
<u>Sales f.o.b shipping point--</u>												
<u>U.S. No. 1, bushel basket--</u>												
Elberta, 2-in. up	-	-	-	-	-	-	-	2.80	-	-	-	-
<u>Benton Harbor--</u>												
<u>Cash market growers' sales--</u>												
<u>U.S. No. 1, 2 in. up. unless state --</u>												
<u>Bushel basket--</u>												
Amber Gems,	-	-	-	-	-	-	-	3.06	-	-	-	-
Early Elberta,	-	-	-	-	-	-	-	3.06	-	-	-	-
Elberta,	-	-	-	-	-	-	-	-	2.59	-	-	-
Early Halehaven,	-	-	-	-	-	-	-	2.79	-	-	-	-

Table 3.--Continued

OTHER FRUITS--CONTINUED

Shipping point and description of sale	Jan.	Feb.	Mar.	Apr.	May	June	July	Aug.	Sept.	Oct.	Nov.	Dec.
-- - - Dollars Per Unit - - -												
<u>Peaches--Continued</u>												
<u>Michigan: (Continued)</u>												
<u>Benton Harbor--</u>												
<u>Cash market growers' sales--</u>												
<u>U.S. No. 1, 2 in. up unless stated--</u>												
<u>Bushel basket--</u>												
Fairhaven,	-	-	-	-	-	-	-	3.06	-	-	-	-
Golden Jubilee,	-	-	-	-	-	-	-	2.10	-	-	-	-
Hales,	-	-	-	-	-	-	-	-	2.73	-	-	-
Hales, 2-1/2 in. up	-	-	-	-	-	-	-	-	5.30	-	-	-
Kalhaven,	-	-	-	-	-	-	-	2.98	3.20	-	-	-
Redhaven,	-	-	-	-	-	-	-	3.34	-	-	-	-
Redhaven, 2-1/4 in. up	-	-	-	-	-	-	-	3.79	-	-	-	-
Rio Oso Gem,	-	-	-	-	-	-	-	-	3.56	-	-	-
" " " 2-1/4 in. up	-	-	-	-	-	-	-	-	4.12	-	-	-
" " " 2-1/2 in.	-	-	-	-	-	-	-	-	5.00	-	-	-
<u>New York:</u>												
<u>Western & Central Pts--</u>												
No quotations 1957 due to light crop.												
<u>North Carolina:</u>												
<u>Southern Pines Area</u>												
not reported in 1957.												
<u>South Carolina:</u>												
<u>Spartanburg:</u>												
<u>Sales f.o.b. shipping point--</u>												
<u>U.S. No. 1 or better 2-in. Up</u>												
<u>1/2-bushel basket--</u>												
Dixie Gem,	-	-	-	-	-	-	2.12	-	-	-	-	-
July Elberta,	-	-	-	-	-	-	2.44	-	-	-	-	-
Redhaven,	-	-	-	-	-	-	2.33	-	-	-	-	-
Southland,	-	-	-	-	-	-	2.81	-	-	-	-	-
Sunhigh,	-	-	-	-	-	-	2.77	-	-	-	-	-
Triogem,	-	-	-	-	-	-	2.88	-	-	-	-	-
<u>3/4 bushel basket--</u>												
Dixie Gem,	-	-	-	-	-	-	3.19	-	-	-	-	-
Elberta,	-	-	-	-	-	-	3.10	2.42	-	-	-	-
Golden East,	-	-	-	-	-	-	3.94	-	-	-	-	-
July Elberta,	-	-	-	-	-	-	3.63	-	-	-	-	-
Redhaven,	-	-	-	-	-	-	3.42	-	-	-	-	-
Southland,	-	-	-	-	-	-	3.97	-	-	-	-	-
Sullivan Elberta,	-	-	-	-	-	-	3.47	-	-	-	-	-
<u>Bushel basket--</u>												
Elberta,	-	-	-	-	-	-	4.03	2.95	-	-	-	-
Golden East,	-	-	-	-	-	-	4.88	-	-	-	-	-
" Jubilee,	-	-	-	-	-	-	2.88	-	-	-	-	-
Halohaven,	-	-	-	-	-	-	4.62	-	-	-	-	-
July Elberta,	-	-	-	-	-	-	4.47	-	-	-	-	-
Redskin,	-	-	-	-	-	-	5.40	-	-	-	-	-
Southland,	-	-	-	-	-	-	4.21	-	-	-	-	-
Sullivan Elberta,	-	-	-	-	-	-	4.35	-	-	-	-	-
<u>Washington:</u>												
<u>Yakima Valley:</u>												
<u>Sales f.o.b. shipping point--</u>												
<u>Wash. No. 1, wrapped, box--</u>												
Elberta, 72's & lgr.	-	-	-	-	-	-	-	1.45	-	-	-	-
Hale, 65's & lgr.	-	-	-	-	-	-	-	1.50	-	-	-	-
" 65's & lgr.cup-pack..	-	-	-	-	-	-	-	2.31	-	-	-	-
<u>West Virginia:</u>												
<u>Martinsburg:</u>												
<u>Appalachian District-(Md., Pa., Va., W.Va.)</u>												
<u>Sales f.o.b. shipping point--</u>												
<u>U.S. No. 1, bushel basket--2-in. up-</u>												
Elberta,	-	-	-	-	-	-	-	3.14	-	-	-	-
Halohaven,	-	-	-	-	-	-	-	2.98	-	-	-	-

Table 3.--Continued

OTHER FRUITS--CONTINUED

Shipping point and description of sale	Jan.	Feb.	Mar.	Apr.	May	June	July	Aug.	Sept.	Oct.	Nov.	Dec.
--- Dollars Per Unit ---												
Peaches-- Continued												
West Virginia: (Continued)												
Martinsburg:												
Appalachian Distric-(Md., Pa., Va., W.Va.)												
Sales f.o.b. shipping point--												
U.S. No. 1, 3/4 bushel basket-												
2 in. up unless stated--												
Elberta,	-	-	-	-	-	-	-	2.60	-	-	-	-
Halchaven,	-	-	-	-	-	-	-	2.62	-	-	-	-
Hales, 2-1/2 in. up	-	-	-	-	-	-	-	5.00	-	-	-	-
Hales, 2-1/4 in. up	-	-	-	-	-	-	-	4.08	-	-	-	-
Sunhigh,	-	-	-	-	-	-	-	2.93	-	-	-	-
Pears												
New York:												
Rochester, Western and Central New York Pts.												
Sales f.o.b. shipping point and delivered												
sales shipping point basis--												
U.S. No. 1:												
Bartlett, 2 in. up. bu. bskt...	-	-	-	-	-	-	-	-	3.72	-	-	-
Washington:												
Yakima Valley:												
Sales f.o.b. shipping point--												
Bartlett, comb. ex. fancy & fancy	-	-	-	-	-	-	-	3.29	3.05	-	-	-
165's & 1gr. box	-	-	-	-	-	-	-	3.46	3.76	3.99	-	-
Bartlett, Ex. fancy, 165's &	-	-	-	-	-	-	-	1.05	.85	-	-	-
1gr. box	-	-	-	-	-	-	-	-	-	-	-	-
Bartlett, 14-lb. lug	-	-	-	-	-	-	-	-	-	-	-	-
D'Anjou, Ex. fancy box, var.	-	-	-	-	-	-	-	-	-	3.76	4.08	-
sizes	4.20	-	-	-	-	-	-	-	-	-	-	-
D'Anjou, Fancy various sizes..	-	-	-	-	-	-	-	-	-	3.32	3.34	-
D'Anjou, U.S. No. 1, various	-	-	-	-	-	-	-	-	-	-	-	-
sizes, box	3.95	4.09	4.16	-	-	-	-	-	-	3.70	3.87	4.19
Plums												
California:												
San Joaquin Valley Points:												
Sales f.o.b. shipping point--												
U.S. No. 1, 4-basket crate--												
Beauty, 4 x 4,	-	-	-	-	3.88	-	-	-	-	-	-	-
5 x 5,	-	-	-	-	3.38	-	-	-	-	-	-	-
Becky Smith, 4 x 5,	-	-	-	-	-	-	3.61	-	-	-	-	-
Durmoso, 3 x 4,	-	-	-	-	-	4.50	-	-	-	-	-	-
4 x 4,	-	-	-	-	-	4.04	-	-	-	-	-	-
4 x 5,	-	-	-	-	-	3.54	-	-	-	-	-	-
Duarte, 4 x 5,	-	-	-	-	-	-	4.05	-	-	-	-	-
Eldorado, 4 x 5,	-	-	-	-	-	-	4.01	-	-	-	-	-
Kelsey, 4 x 4,	-	-	-	-	-	-	4.25	-	-	-	-	-
Late Santa Rosa, 4 x 5,	-	-	-	-	-	-	4.50	3.99	-	-	-	-
President, 4 x 5,	-	-	-	-	-	-	4.25	3.43	-	-	-	-
Santa Rosa, 3 x 4,	-	-	-	-	-	4.11	-	-	-	-	-	-
4 x 4,	-	-	-	-	-	4.31	4.56	-	-	-	-	-
4 x 5,	-	-	-	-	-	3.79	4.06	-	-	-	-	-
Trudegy, 5 x 6,	-	-	-	-	-	-	3.84	-	-	-	-	-
Wickson, 4 x 5,	-	-	-	-	-	-	3.81	-	-	-	-	-
North California Points:												
Sales f.o.b. shipping point,												
U.S. No. 1, 4-basket crate--												
Beauty, 4 x 5,	-	-	-	-	-	3.25	-	-	-	-	-	-
5 x 5,	-	-	-	-	-	2.69	-	-	-	-	-	-
Durbank, 4 x 5,	-	-	-	-	-	-	3.14	-	-	-	-	-
Duarte, 4 x 5,	-	-	-	-	-	-	4.01	3.38	-	-	-	-
Eldorado, 4 x 5,	-	-	-	-	-	-	4.17	-	-	-	-	-
Gavito, 4 x 5,	-	-	-	-	-	-	3.39	-	-	-	-	-
Late Duarte, 4 x 5,	-	-	-	-	-	-	-	2.70	-	-	-	-
Late Santa Rosa, 4 x 5,	-	-	-	-	-	-	-	3.93	-	-	-	-
President, 4 x 5,	-	-	-	-	-	-	-	2.83	-	-	-	-
Santa Rosa, 4 x 4,	-	-	-	-	-	-	4.50	-	-	-	-	-
" " 4 x 5,	-	-	-	-	-	-	4.08	-	-	-	-	-

Table 3.--Continued

OTHER FRUITS--CONTINUED

Shipping point and description of sale	Jan.	Feb.	Mar.	Apr.	May	June	July	Aug.	Sept.	Oct.	Nov.	Dec.
-- -- Dollars Per Unit -- --												
<u>Plums--Continued</u>												
<u>North California Points:(Continued)</u>												
<u>Sales f.o.b shipping point,</u>												
<u>U.S. No. 1, 4-basket crate--</u>												
Sharkoy, 4 x 5,.....	-	-	-	-	-	-	3.65	-	-	-	-	-
Wickson, 4 x 4,	-	-	-	-	-	-	4.02	-	-	-	-	-
<u>Prunes, Fresh</u>												
<u>Idaho:</u>												
<u>Western Idaho and Malheur Co. Oreg.:</u>												
<u>Sales f.o.b. shipping point--</u>												
<u>U.S.No. 1,</u>												
Italian, 1/2-bu.basket--												
ring faced	-	-	-	-	-	-	-	2.00	1.62	-	-	-
<u>Washington:</u>												
<u>Yakima Valley:</u>												
<u>Sales f.o.b. shipping point--</u>												
<u>Demaris & Italian type, Wash. No. 1</u>												
1/2 bu. basket, faced	-	-	-	-	-	-	-	2.65	-	-	-	-
12-lb. lug, loose	-	-	-	-	-	-	-	1.12	-	-	-	-
15-lb. lug, loose	-	-	-	-	-	-	-	1.48	-	-	-	-
<u>MELONS</u>												
<u>Cantaloups</u>												
<u>Arizona:</u>												
<u>Sales f.o.b. shipping point, Top ice extra--</u>												
<u>Orange flesh, vine ripened, Jumbo crate--</u>												
<u>Phoenix District:</u>												
23's	-	-	-	-	-	-	4.12	-	-	-	-	-
27's	-	-	-	-	-	-	5.07	-	-	-	-	-
36's	-	-	-	-	-	-	6.07	-	-	-	-	-
45's	-	-	-	-	-	-	5.07	-	-	-	-	-
<u>Yuma District:</u>												
23's	-	-	-	-	-	-	3.33	-	-	-	-	-
27's	-	-	-	-	-	6.28	4.50	-	-	-	-	-
36's	-	-	-	-	-	6.89	5.50	-	-	-	-	-
45's	-	-	-	-	-	5.58	4.50	-	-	-	-	-
Std. crate 45's	-	-	-	-	-	3.88	-	-	-	-	-	-
<u>California:</u>												
<u>Sales f.o.b shipping point- Top ice extra--</u>												
<u>Orange flesh, vine ripened--</u>												
<u>El Centro, Imperial Valley:</u>												
Jumbo crt. 27's	-	-	-	-	7.38	-	-	-	-	-	-	-
" " 36's	-	-	-	-	7.64	-	-	-	-	-	-	-
" " 45's	-	-	-	-	7.36	-	-	-	-	-	-	-
Pony crt. 45-54's	-	-	-	-	2.58	-	-	-	-	-	-	-
Std. crate 45's	-	-	-	-	4.68	-	-	-	-	-	-	-
<u>West Side District:</u>												
<u>Jumbo crate--</u>												
23's	-	-	-	-	-	-	2.86	3.02	-	-	-	-
27's	-	-	-	-	-	-	4.03	3.55	2.72	-	-	-
36's	-	-	-	-	-	-	4.84	3.92	3.09	-	-	-
45's	-	-	-	-	-	-	4.66	3.68	2.87	-	-	-
<u>Delano-Whooier Ridge District:</u>												
<u>Jumbo crate--</u>												
23's	-	-	-	-	-	-	3.44	-	-	-	-	-
27's	-	-	-	-	-	-	4.75	-	-	-	-	-
36's	-	-	-	-	-	-	5.65	-	-	-	-	-
45's	-	-	-	-	-	-	5.05	-	-	-	-	-
<u>Texas:</u>												
<u>Lower Rio Grande Valley Points:</u>												
<u>Sales f.o.b. shipping points--</u>												
<u>Jumbo crate--</u>												
23's	-	-	-	-	5.72	-	-	-	-	-	-	-
27's	-	-	-	-	7.48	-	-	-	-	-	-	-
36's	-	-	-	-	8.48	-	-	-	-	-	-	-
45's	-	-	-	-	7.48	-	-	-	-	-	-	-

Table 3.--Continued

MELONS--CONTINUED

Shipping point and description of sale	Jan.	Feb.	Mar.	Apr.	May	June	July	Aug.	Sept.	Oct.	Nov.	Dec.
- - - Dollars Per Unit - - -												
<u>Honeydews</u>												
<u>California:</u>												
<u>Fresno & Central California Points:</u>												
<u>Sales f.o.b. shipping point--</u>												
Standard flat crate, 9-12's..	-	-	-	-	-	-	3.56	2.77	2.28	2.11	-	-
Jumbo flat crate, 6-8's...	-	-	-	-	-	-	3.06	1.97	1. ' 1.95	-	-	-
<u>MISC. MELONS</u>												
<u>California:</u>												
<u>San Joaquin Valley Pts., Fresno--</u>												
<u>Sales f.o.b. shipping point</u>												
<u>Flat crate - all sizes--</u>												
Casabas,	-	-	-	-	-	-	3.00	2.84	2.30	2.16	-	-
Cronshaws,	-	-	-	-	-	-	3.71	2.77	2.30	2.16	-	-
Persians,	-	-	-	-	-	-	3.45	2.97	2.40	2.16	-	-
<u>Watermelons</u>												
<u>Arizona:</u>												
<u>Phoenix District:</u>												
<u>Sales f.o.b shipping point-, per ton--</u>												
<u>Klondike and Peacock, 18-22-lb.</u>												
av.	-	-	-	-	-	64.41	86.39	-	-	-	-	-
12-16....	-	-	-	-	-	53.24	71.67	-	-	-	-	-
<u>California:</u>												
<u>Sales f.o.b. shipping point, per ton--</u>												
<u>El Centro-Imperial Valley:</u>												
<u>Klondike and Peacock,</u>												
16-18-lb.av.	-	-	-	-	87.22	61.36	-	-	-	-	-	-
12-14-lb.av.	-	-	-	-	63.75	44.09	-	-	-	-	-	-
<u>San Joaquin Valley Points:</u>												
Klondike, 18-20-lb. av.	-	-	-	-	-	-	52.78	23.97	-	-	-	-
<u>Florida:</u>												
<u>Progressing South Florida through</u>												
<u>North Florida Section:</u>												
<u>Sales f.o.b. cash track & Sales f.o.b. acceptance final--</u>												
<u>Combined crosswise & lengthwise loads, also light &</u>												
<u>heavy loads, 36-foot car - bulk per car--</u>												
<u>Long Gray, 4-layers--</u>												
21-23 lb. av.,	-	-	-	1207.	822.	483.	-	-	-	-	-	-
24-26-lb. av.,	-	-	-	1327.	947.	534.	-	-	-	-	-	-
27-28 lb. av.,	-	-	-	-	1109.	586.	-	-	-	-	-	-
29-32 lb. av.,	-	-	-	-	-	1124.	626.	-	-	-	-	-
<u>Long Gray, 5-layers--</u>												
13-14 lb. av.,	-	-	-	630.	932.	-	-	-	-	-	-	-
15-16 lb. av.,	-	-	-	-	732.	744.	-	-	-	-	-	-
17-20 lb. av.,	-	-	-	927.	811.	551.	-	-	-	-	-	-
<u>Georgia:</u>												
<u>South Central Georgia Points:</u>												
<u>Sales f.o.b cash track & sales f.o.b. acceptance final-</u>												
<u>36-foot car-bulk per car:</u>												
<u>Long Gray, 4-layers--</u>												
22-23 lb. av.,	-	-	-	-	-	382.	350.	-	-	-	-	-
24-26 lb. av.,	-	-	-	-	-	435.	417.	-	-	-	-	-
27-28 lb. av.,	-	-	-	-	-	485.	464.	-	-	-	-	-
30-32 lb. av.,	-	-	-	-	-	562.	536.	-	-	-	-	-
<u>Long Gray, 5-layers--</u>												
17-20 lb. av.,	-	-	-	-	-	450.	334.	-	-	-	-	-
<u>Blackstone, 3-layers--</u>												
24-26 lb. av.,	-	-	-	-	-	359.	404.	-	-	-	-	-
<u>South Carolina:</u>												
<u>Allendale & Nearby Points:</u>												
<u>Sales f.o.b. cash track--</u>												
<u>36-foot car - bulk per car:</u>												
<u>Long Gray, 5-layers--</u>												
17-22 lb. av.,	-	-	-	-	-	-	391.	-	-	-	-	-
<u>Long Gray, 4-layers--</u>												
21-23 lb. av.,	-	-	-	-	-	-	355.	-	-	-	-	-
24-26 lb. av.,	-	-	-	-	-	-	403.	-	-	-	-	-

Table 3.--Continued

MELONS--CONTINUED

Shipping point and description of sale	Jan.	Feb.	Mar.	Apr.	May	June	July	Aug.	Sept.	Oct.	Nov.	Dec.
- - - Dollars Per Unit - - -												
<u>Watermelons--Continued</u>												
<u>South Carolina: (Continued)</u>												
<u>Allendale & Nearby Points:</u>												
<u>Sales f.o.b. cash truck--</u>												
<u>36-foot car - bulk per car:</u>												
<u>Long Gray, 4-layers--</u>												
27-28 lb. av.,	-	-	-	-	-	-	499.	-	-	-	-	-
29-30 lb. av.,	-	-	-	-	-	-	518.	-	-	-	-	-
<u>VEGETABLES</u>												
<u>Asparagus</u>												
<u>Washington:</u>												
<u>Yakima Valley:</u>												
<u>Truck & L.C.L. sales--</u>												
<u>Wash. No. 1, crates per lb.--</u>												
Loose,	-	-	-	.12	.11½	.11½	-	-	-	-	-	-
Bunched,	-	-	-	.13	.12	.12	-	-	-	-	-	-
Unclassified,	-	-	-	.07	.051	.05	-	-	-	-	-	-
<u>Beans, Lima</u>												
<u>Florida:</u>												
<u>Plant City:</u>												
<u>Auction price to growers-bushel hamper:</u>												
Baby lima,	-	-	-	4.96	4.80	-	-	-	-	-	-	-
Butterbeans,	-	-	-	3.57	4.06	-	-	-	-	-	-	-
Fordhook,	-	-	-	-	4.18	-	-	-	-	-	-	-
<u>Pompano Beach Section:</u>												
<u>Sales to local buyers--</u>												
bushel hamper,	4.89	4.56	-	5.06	-	-	-	-	-	-	3.70	4.41
<u>New York:</u>												
<u>Long Island-Auction Sales-bushel hamper:</u>												
Southold,	-	-	-	-	-	-	-	3.34	2.46	-	-	-
<u>North Carolina:</u>												
<u>Auction price to growers-bushel hamper:</u>												
Faison,	-	-	-	-	-	-	2.83	-	-	-	-	-
<u>Beans, Snap, Green</u>												
<u>Florida:</u>												
<u>Sales f.o.b. shipping point-bushel hamper:</u>												
<u>Dade County Section:</u>												
Pole beans,	4.19	3.26	4.10	4.88	-	-	-	-	-	-	-	4.15
Tendergreen,	-	3.38	3.81	-	-	-	-	-	-	-	-	-
Valentine,	4.65	4.96	-	-	-	-	-	-	-	-	-	-
<u>Lake Okechobee Section:</u>												
Contender,	-	-	-	-	-	-	-	-	-	-	2.72	2.69
Plentiful,	-	-	-	-	-	-	-	-	-	-	-	1.94
Tendergreen,	-	-	3.43	-	-	-	-	-	-	-	2.10	2.16
Valentine,	4.18	5.09	3.57*	-	-	-	-	-	-	-	3.20	3.32
<u>Plant City:</u>												
<u>Auction price to growers-bushel hamper:</u>												
Pole beans,	-	-	-	5.60	4.85	-	-	-	-	-	-	-
Round Green type,	-	-	-	2.82	2.47	-	-	-	-	-	-	-
<u>Webster, Florida--</u>												
mostly Valentine field crate,	-	-	-	3.46	-	-	-	-	-	-	-	-
<u>Pompano Beach Section:</u>												
<u>Sales to local buyers--</u>												
Contender,	4.27	5.14	4.48	3.27	-	-	-	-	-	-	2.84	4.05
Plentiful,	3.50	4.46	-	-	-	-	-	-	-	-	-	2.66
Tendergreen,	3.57	3.77*	3.44	-	-	-	-	-	-	-	2.07	3.20
Valentine,	4.88	5.60	5.15	3.71	-	-	-	-	-	-	3.25	4.43
<u>Mississippi:</u>												
<u>Crystal Springs & Nearby points:</u>												
<u>Sales f.o.b. shipping point and delivered sales shipping point basis--</u>												
<u>Belt graded -- bushel hamper--</u>												
Contender,	-	-	-	-	3.22	2.67	-	-	-	-	-	-
Valentine,	-	-	-	-	3.88	2.80	-	-	-	-	-	-

* Fair quality.

VEGETABLES--CONTINUED

Shipping point and description of sale	Jan.	Feb.	Mar.	Apr.	May	June	July	Aug.	Sept.	Oct.	Nov.	Dec.
-- -- Dollars Per Unit -- --												
<u>Beans, Snap, Green--Continued</u>												
<u>Mississippi: (Continued)</u>												
<u>Crystal Springs & Nearby points:</u>												
<u>Sales f.o.b. shipping point and delivered sales shipping point basis--</u>												
<u>Belt graded - bushel hamper--</u>												
<u>Auction price to growers--</u>												
Contender,	-	-	-	-	2.28	1.92	-	-	-	-	-	-
Valentine,	-	-	-	-	2.91	1.87	-	-	-	-	-	-
<u>New York:</u>												
<u>Long Island - Auction sales</u>												
<u>Bushel hamper--</u>												
Southold,	-	-	-	-	-	-	-	-	1.83	-	-	-
Riverhead,	-	-	-	-	-	-	-	-	1.28	-	-	-
<u>North Carolina:</u>												
<u>Auction price to growers-bu. hamper--</u>												
<u>Faison:</u>												
Valentine,	-	-	-	-	2.28	1.62	-	-	-	-	-	-
Wade,	-	-	-	-	-	1.88	-	-	-	-	-	-
<u>Mt. Olive:</u>												
Valentine,	-	-	-	-	-	1.31	-	-	-	-	-	-
<u>Wallace:</u>												
Tendergreen,	-	-	-	-	-	1.42	-	-	-	-	-	-
<u>South Carolina:</u>												
<u>Auction price to growers--</u>												
<u>Bushel hamper--</u>												
<u>Charleston:</u>												
Wade,	-	-	-	-	-	1.33	-	-	-	-	-	-
<u>Beans, Snap, Wax</u>												
<u>Florida:</u>												
<u>Pompano Beach Section:</u>												
<u>Sales to local buyers--</u>												
Bushel hamper,	5.25	6.58	5.47	4.28	-	-	-	-	-	-	3.44	4.82
<u>Mississippi:</u>												
<u>Crystal Spring & Nearby Points:</u>												
<u>Auction prices to growers--</u>												
Bushel hamper,	-	-	-	-	3.32	1.72	-	-	-	-	-	-
<u>Brussels Sprouts</u>												
<u>New York:</u>												
<u>Long Island-Auction sales--</u>												
<u>16-quart crate--</u>												
Riverhead,	-	-	-	-	-	-	-	-	2.42	2.94	3.18	2.89
Southold,	-	-	-	-	-	-	-	-	2.74	3.51	3.56	3.33
<u>Cabbage</u>												
<u>California:</u>												
<u>El Centro, Imperial Valley--</u>												
<u>Sales f.o.b. shipping point--</u>												
<u>Domestic Round type:</u>												
W.C.A. crate,	1.96	2.24	2.30	-	-	-	-	-	-	-	-	-
50-lb. wirebound crate,	1.25	1.44	-	-	-	-	-	-	-	-	-	-
<u>Florida:</u>												
<u>Sales f.o.b. shipping point--</u>												
<u>Hastings:</u>												
<u>Domestic Round type:</u>												
1-3/4 bu. crate	1.48	1.66	2.68	1.56	-	-	-	-	-	-	-	-
50-pound sack,	1.23	1.43	2.40	1.36	-	-	-	-	-	-	-	-
<u>Lake Okechobee Section:</u>												
<u>Domestic Round type:</u>												
1-3/4 bu. crate,	1.46	1.69	2.51	1.39	-	-	-	-	-	-	1.56	1.84
50-pound sack,	1.21	1.43	2.25	-	-	-	-	-	-	-	1.38	1.81
<u>Red type:</u>												
1-3/4 bu. crate,	1.89	1.72	1.67	2.55	-	-	-	-	-	-	-	2.84
<u>Savoy type:</u>												
1-3/4 bushel crate,	1.68	1.29	2.51	2.62	-	-	-	-	-	-	-	-

VEGETABLES--CONTINUED

Shipping points and description of sale	Jan.	Feb.	Mar.	Apr.	May	June	July	Aug.	Sept.	Oct.	Nov.	Dec.
-- - - Dollars Per Unit - - -												
<u>Cabbage--Continued</u>												
<u>Florida: (Continued)</u>												
<u>Sales f.o.b. shipping point--</u>												
<u>Sanford-Oviedo-Zellwood Section:</u>												
<u>Domestic Round type:</u>												
1-3/4 bushel crate,	1.55	1.69	2.63	1.54	1.27	-	-	-	-	-	-	-
50-pound sack,	1.28	1.43	2.37	1.30	1.01	-	-	-	-	-	-	-
<u>Mississippi:</u>												
<u>Crystal Springs & Nearby Points:</u>												
<u>Sales f.o.b. shipping point--</u>												
<u>U.S.No. 1</u>												
<u>Domestic Round type:</u>												
1-3/4 bushel crate,	-	-	-	1.14	1.33	-	-	-	-	-	-	-
50-pound sack,	-	-	-	.88	1.12	-	-	-	-	-	-	-
<u>New York:</u>												
<u>Long Island-Auction Sales--</u>												
<u>1-3/5 bushel crate--</u>												
Riverhead,	-	-	-	-	-	-	-	-	1.10	1.11	1.17	1.77
Southold,	-	-	-	-	-	-	-	-	1.16	1.11	1.26	1.85
<u>Rochester, Western & Central N.Y. Pts.</u>												
<u>Sales f.o.b. shipping point and</u>												
<u>delivered sales shipping point basis--</u>												
<u>50-pound sack--</u>												
Danish type,80	.80	1.33	1.72	-	-	-	-	1.24	.96	1.06	1.45
Domestic Round type,	-	-	-	-	-	-	-	1.45	1.25	-	-	-
Red,97	-	-	-	-	-	-	-	-	-	-	-
<u>Texas:</u>												
<u>Lower Rio Grande Valley Points:</u>												
<u>Sales f.o.b. shipping point--</u>												
<u>Domestic Round type:</u>												
1-3/4 bushel crate,	1.59	1.69	2.22	-	-	-	-	-	-	-	-	1.87
50-pound sack,	1.34	1.42	1.98	-	-	-	-	-	-	-	-	1.59
<u>Wisconsin:</u>												
<u>Northern and Eastern Wisconsin Pts:</u>												
<u>Sales f.o.b. shipping point and</u>												
<u>delivered sales shipping point basis--</u>												
<u>50-pound sack--</u>												
Danish type,82	.98	1.61	-	-	-	-	-	-	1.18	1.17	-
Red,	1.00	-	-	-	-	-	-	-	-	-	1.52	-
<u>Carrots</u>												
<u>Arizona:</u>												
<u>Phoenix District:</u>												
<u>Sales f.o.b. shipping point--</u>												
<u>Bunched--</u>												
4-dozen, 5ml - med. 2/3-crate...	-	-	-	-	2.25	2.50	-	-	-	-	-	-
<u>Topped,</u>												
Crate, 48-1-lb. film bag	-	-	-	-	3.15	2.88	-	-	-	-	-	-
50-lb. sack, lgc	-	-	-	-	1.36	1.90	-	-	-	-	-	-
<u>California:</u>												
<u>El Centro, Imperial Valley District:</u>												
<u>Sales f.o.b. shipping point--</u>												
<u>Bunched - W.G.A. crate--</u>												
6-dozen, med. - lgc.,	3.36	-	-	-	-	-	-	-	-	-	-	-
<u>Bunched - 2/3-crate--</u>												
4-dozen, med. - lgc.,	2.32	2.11	1.97	1.99	2.26	-	-	-	-	-	-	-
<u>Topped,</u>												
Crate, 48-1-lb. film bag,	-	-	-	2.39	3.19	-	-	-	-	-	-	-
50-pound sack, 1 1/4-in. min. ...	-	-	-	1.04	1.36	-	-	-	-	-	-	-
<u>Salinas-Watsonville District:</u>												
<u>Sales f.o.b. shipping point--</u>												
<u>Bunched--</u>												
4-dozen, med.-lge. 2/3 crate ..	-	-	-	-	-	2.57	2.62	2.82	3.45	3.50	3.50	3.50
<u>Topped,</u>												
Crate, 48-1-lb. film bag,	-	-	-	-	-	2.85	3.46	3.88	4.12	4.14	3.93	4.09
50-pound sack, lgc.,	-	-	-	-	-	-	-	2.05	2.36	2.42	-	-

Table 3.--Continued

VEGETABLES--CONTINUED

Shipping point and description of sale	Jan.	Feb.	Mar.	Apr.	May	June	July	Aug.	Sept.	Oct.	Nov.	Dec.
-- - - Dollars Per Unit - - -												
<u>Carrots--Continued</u>												
<u>New York:</u>												
<u>Rochester, Western & Central N.Y. Pts:</u>												
<u>Sales f.o.b. shipping point and delivered sales shipping point basis--</u>												
<u>Topped,</u>												
Coreless, 50-pound sack	1.24	-	-	-	-	-	-	1.88	1.94	1.98	1.78	2.15
<u>Texas:</u>												
<u>Lower Rio Grande Valley Points:</u>												
<u>Sales f.o.b. shipping point--</u>												
<u>Topped,</u>												
48-1-lb. film bag, -W.D. crt..	2.79	2.46	2.35	2.39	-	-	-	-	-	-	-	4.09
" " " " " paper sack..	2.34	2.25	2.08	2.11	-	-	-	-	-	-	-	3.84
<u>Cauliflower</u>												
<u>Florida:</u>												
<u>Sales f.o.b. shipping point--</u>												
<u>Manatee-Ruskin Section:</u>												
Catskill crate 12-16's	1.81	1.75	-	2.32	-	-	-	-	-	-	-	-
<u>Sanford-Oviedo-Zellwood District:</u>												
<u>U.S. No. 1--</u>												
Pony crate 9-12's	1.49	1.72	-	1.58	-	-	-	-	-	-	-	-
Catskill crate 12's	1.92	2.25	2.80	2.34	-	-	-	-	-	-	-	-
Catskill crate 15-16's	1.45	-	-	-	-	-	-	-	-	-	-	-
<u>Michigan:</u>												
<u>Benton Harbor:</u>												
<u>Sales f.o.b. shipping point--</u>												
Long Island & flat crates 12's	-	-	-	-	-	-	-	-	1.85	1.59	-	-
<u>New York:</u>												
<u>Long Island-Auction sales-price to growers--</u>												
<u>Long Island crate--various sizes--</u>												
Riverhead,	-	-	-	-	-	-	-	-	1.45	1.39	1.86	2.47
Southold,	-	-	-	-	-	-	-	-	2.08	1.42	1.89	2.74
<u>Texas:</u>												
<u>Lower Rio Grande Valley Points:</u>												
<u>Sales f.o.b. shipping point--</u>												
Long Island crate mostly 12's	1.40	-	-	-	-	-	-	-	-	-	-	-
<u>Celery</u>												
<u>Arizona:</u>												
<u>Phoenix District:</u>												
<u>Sales f.o.b. shipping point--</u>												
<u>Trimmed tops, 16-inch crate--</u>												
Pascal type, 2-3 dozen,	-	3.34	2.36	-	-	-	-	-	-	-	-	-
<u>California:</u>												
<u>Sales f.o.b. shipping point--</u>												
<u>Trimmed tops,</u>												
<u>16-inch crate-Pascal type--</u>												
<u>Chula Vista - Oceanside District:</u>												
<u>U.S. No. 1-</u>												
2-3 dozen,	3.76	3.30	2.52	-	-	-	-	-	-	-	-	-
<u>Vanice-Oxnard-Orange Co., District:</u>												
<u>85% or more, U.S. No. 1</u>												
2-3 dozen,	-	-	2.22	2.95	3.06	3.38	-	-	-	-	-	-
<u>Salinas-Watsonville District:</u>												
2-3 dozen,	-	-	-	-	-	3.19	2.14	1.61	1.96	1.49	1.74	2.11
<u>Stockton-Delta District:</u>												
<u>North San Joaquin Valley Points:</u>												
2-3 dozen,	-	-	-	-	-	-	-	-	-	-	1.78	2.03
<u>Florida:</u>												
<u>Sales f.o.b. shipping point--</u>												
<u>Trimmed tops,</u>												
<u>16-inch crate--</u>												
<u>Lake Okechobee Section:</u>												
Golden Heart, 3-10 dozen, ...	3.54	3.90	3.78	2.01	-	-	-	-	-	-	-	3.06
Pascal type, 2-10 dozen,	2.98	3.15	2.03	1.70	2.39	-	-	-	-	-	2.46	1.98

Table 3.--Continued

VEGETABLES--CONTINUED

Shipping point and description of sale	Jan.	Feb.	Mar.	Apr.	May	June	July	Aug.	Sept.	Oct.	Nov.	Dec.
-- - - Dollars Per Unit - - -												
<u>Celery--Continued</u>												
<u>Florida: (Continued)</u>												
<u>Sales f.o.b. shipping point--</u>												
<u>Trimmed tops,</u>												
<u>16-inch crate--</u>												
<u>Sanford-Oviedo-Zellwood Section:</u>												
Golden Heart, 2 1/2-6-dozen	3.86	3.84	3.81	1.95	-	-	-	-	-	-	-	-
Pascal type, 2-6-dozen	3.01	3.15	2.02	1.75	2.58	-	-	-	-	-	-	-
<u>Sarasota Section:</u>												
Pascal type, 2-6-dozen	2.98	3.13	2.06	1.64	-	-	-	-	-	-	-	-
<u>Michigan:</u>												
<u>West Michigan Points:</u>												
<u>Trimmed tops,</u>												
<u>16-inch crate--</u>												
Pascal type, 2-3-dozen,	-	-	-	-	-	-	2.60	2.30	2.66	2.18	-	-
<u>New York:</u>												
<u>Rochester, Western & Central N.Y. Pts.</u>												
<u>Sales f.o.b. shipping point and</u>												
<u>delivered sales shipping point basis--</u>												
<u>Trimmed tops,</u>												
<u>16-inch crate--</u>												
Pascal type, 2-6-dozen	-	-	-	-	-	-	-	2.21	2.64	2.21	-	-
<u>Chinese Cabbage</u>												
<u>Florida:</u>												
<u>Lake Okeechobee Section:</u>												
<u>Sales f.o.b. shipping point--</u>												
16-inch crate, wrapped,	1.66	1.65	2.22	1.48	1.46	-	-	-	-	-	1.59	1.62
<u>Corn, Green</u>												
<u>California:</u>												
<u>Stockton-San Joaquin Valley Pts.</u>												
<u>Sales f.o.b. shipping point--</u>												
<u>U.S. No. 1--</u>												
Yellow, 5-doz. crate,	-	-	-	-	-	-	2.28	-	-	-	-	-
<u>Florida:</u>												
<u>Sales f.o.b. shipping point--</u>												
<u>U.S. Fancy, Yellow, 5-dozen crate-</u>												
Dade County Section,	2.70	2.84	-	-	-	-	-	-	-	-	-	-
Lake Okeechobee Section,	2.75	2.63	2.84	2.65	2.65	-	-	-	-	-	1.88	2.35
Pompano Beach Section,	2.80	2.68	2.99	3.00	-	-	-	-	-	-	1.75	2.65
Sanford-Oviedo-Zellwood Sect..	-	-	-	-	2.38	-	-	-	-	-	-	-
<u>North Carolina:</u>												
<u>Wallace:</u>												
<u>Auction price to growers--</u>												
Yellow, 5-dozen, crate,	-	-	-	-	-	1.34	1.22	-	-	-	-	-
<u>Cucumbers</u>												
<u>Florida:</u>												
<u>Dushol basket, unless stated--</u>												
<u>Ft. Myers-Immokalee Section:</u>												
<u>Sales f.o.b. shipping point--</u>												
<u>U.S. No. 1--</u>												
Waxed,	4.47	6.60	5.80	4.06	-	-	-	-	-	-	2.25 1/2	5.50 1/2
U.S. No. 1,	-	-	-	-	-	-	-	-	-	-	1.48	3.71
<u>Lake Okeechobee Section:</u>												
<u>Sales f.o.b. shipping point--</u>												
Waxed,	4.42	-	-	-	-	-	-	-	-	-	-	-
<u>Pompano Beach Section:</u>												
<u>Sales to local buyers--</u>												
Waxed,	3.28	5.70	5.83	4.06	-	-	-	-	-	-	-	6.62 1/2
U.S. No. 1	-	-	-	-	-	-	-	-	-	-	2.17	7.03
<u>Cuba Repack:</u>												
<u>U.S. No. 1</u>												
U.S. No. 1	-	-	-	-	-	-	-	-	-	-	-	10.60
U.S. No. 2,	-	-	-	-	-	-	-	-	-	-	-	6.95

1/ U. S. Fancy.

2/ U. S. Fancy quoted only Nov. 27-Dec 17. Other grades prices advanced sharply following severe freeze of Dec. 12 and 13th.

VEGETABLES--CONTINUED

Shipping point and description of sale	Jan.	Feb.	Mar.	Apr.	May	June	July	Aug.	Sept.	Oct.	Nov.	Dec.
-- Dollars Per Unit --												
<u>Cucumbers--Continued</u>												
Florida: (Continued)												
Central Florida Points:												
Sales f.o.b. shipping point--												
Waxed,	-	-	-	4.84	3.88	-	-	-	-	-	2.22	1/
U. S. No. 1,	-	-	-	-	-	-	-	-	-	-	1.48	-
Auction price to growers--												
Bushel field crate,	-	-	-	3.63	2.93	-	-	-	-	-	-	-
Webster:												
Auction price to growers--												
Bushel field crate,	-	-	-	4.45	3.05	-	-	-	-	-	-	-
Michigan:												
Benton Harbor:												
Sales f.o.b. shipping point--bushel baskets--												
Slicers, U. S. No. 1,	-	-	-	-	-	-	-	2.70	-	-	-	-
large,	-	-	-	-	-	-	-	1.46	-	-	-	-
U. S. No. 2,	-	-	-	-	-	-	-	1.46	-	-	-	-
12-qt. carton,	-	-	-	-	-	-	-	1.09	-	-	-	-
Cash market growers' sales--												
U.S. No. 1, bushel basket--												
Slicers,	-	-	-	-	-	-	4.97	2.44	-	-	-	-
large,	-	-	-	-	-	-	2.85	1.38	-	-	-	-
U. S. No. 2,	-	-	-	-	-	-	2.79	1.39	-	-	-	-
New York:												
Auction price to growers, bushel basket--												
Southold, L.I.,	-	-	-	-	-	-	-	-	2.07	-	-	-
North Carolina:												
Auction price to growers, bushel basket--												
Clinton,	-	-	-	-	-	1.77	2.79	-	-	-	-	-
Faison,	-	-	-	-	-	2.26	2.10	-	-	-	-	-
Mt. Olive,	-	-	-	-	-	2.28	-	-	-	-	-	-
Wallace,	-	-	-	-	-	1.46	1.31	-	-	-	-	-
Only Virginia & Eastern Shore Pts--												
Sales f.o.b. shipping points--												
Bushel basket,	-	-	-	-	-	3.34	-	-	-	-	-	-
South Carolina:												
Charleston:												
Auction price to growers--												
Field run, bushel basket,	-	-	-	-	-	3.46	-	-	-	-	-	-
<u>Eggplant</u>												
Florida:												
Bushel basket, unless stated--												
Plant City:												
Auction price to growers,												
Pompano Beach Section:	-	-	-	2.50	2.83	-	-	-	-	-	-	-
Sales to local buyers--												
Wrapped,	1.99	2.30	1.29	1.28	-	-	-	-	-	-	.99	2.81
North Carolina:												
Auction price to growers--												
Faison, bushel basket,	-	-	-	-	-	-	2.38	-	-	-	-	-
Clinton, " "	-	-	-	-	-	-	1.99	-	-	-	-	-
<u>Endive</u>												
Florida:												
Lake Okeechobee Section:												
Sales f.o.b. shipping point--												
1-1/9 bushel wirebound crate....	1.36	1.11	1.16	1.59	1.72	-	-	-	-	-	1.01	1.83
<u>Escarole</u>												
Florida:												
Lake Okeechobee Section:												
Sales f.o.b. shipping point--												
1-1/9 bushel wirebound crate....	1.34	1.07	.92	.93	1.28	-	-	-	-	-	.98	1.31
<u>Lettuce</u>												
Arizona:												
Sales f.o.b. shipping point--												
Iceberg type-drypack, carton-24's-												
Aguila Section,	-	-	-	2.12	1.99	-	-	-	-	-	-	-

1/U.S. Fancy.

Table 3.--Continued

VEGETABLES--CONTINUED

Shipping point and description of sale	Jan.	Feb.	Mar.	Apr.	May	June	July	Aug.	Sept.	Oct.	Nov.	Dec.
-- - - Dollars Per Unit - - -												
<u>Lettuce--Continued</u>												
<u>Arizona: (Continued)</u>												
<u>Sales f.o.b. shipping point--</u>												
<u>Iceberg type-drypack, carton-24's-</u>												
Phoenix District,	-	-	1.72	1.75	1.57	-	-	-	-	2.86	1.12	1.29
Yuma District, ...	1.91	.92	.96	-	-	-	-	-	-	-	-	1.44
<u>California:</u>												
<u>Sales f.o.b. shipping point--</u>												
<u>Iceberg type-drypack, carton-24's-</u>												
El Centro, Imperial Valley District,	1.88	1.12	.84	-	-	-	-	-	-	-	1.08	1.54
Salinas-Watsonville, District..	-	-	-	1.51	1.29	2.26	2.46	2.64	1.90	2.22	-	-
" " " 30's..	-	-	-	-	-	1.49	1.56	1.69	1.07	1.42	-	-
San Joaquin Valley, Brentwood Peterson District,	-	-	-	-	-	-	-	-	-	2.77	1.64	-
<u>Florida:</u>												
<u>Sales f.o.b. shipping point--</u>												
<u>Lake Okechobee Section:</u>												
Big Boston type, Eastern crate 24's	1.93	1.96	1.89	1.88	-	-	-	-	-	-	1.70	2.22
Iceberg type, drypack 24-36's	-	-	-	-	1.75	-	-	-	-	-	1.70	1.92
1/2 wirebound crate,	2.03	1.49	-	-	-	-	-	-	-	-	-	-
<u>Texas:</u>												
<u>Lower Rio Grande Valley Points:</u>												
<u>Sales f.o.b. shipping point--</u>												
<u>Iceberg type:</u>												
Dry pack, carton 24's,	2.11	1.46	-	-	-	-	-	-	-	-	-	1.49
<u>Onions</u>												
<u>Arizona:</u>												
<u>Phoenix District:</u>												
<u>Sales f.o.b. shipping point--</u>												
<u>U. S. No. 1, 50-lb. sack--</u>												
Yellow Bermuda, mod.,	-	-	-	-	2.54	2.84	-	-	-	-	-	-
Granex, med.,	-	-	-	-	2.57	2.84	-	-	-	-	-	-
<u>California:</u>												
<u>Stockton District:</u>												
<u>Sales f.o.b. shipping point--</u>												
<u>U. S. No. 1, 50-lb. sack--</u>												
Stockton Yellow, mod.,	-	-	-	-	2.36	2.50	-	-	-	-	-	-
" " lge.,	-	-	-	-	2.04	2.50	-	-	-	-	-	-
<u>Colorado:</u>												
<u>Arkansas Valley Points:</u>												
<u>Sales f.o.b. shipping point and delivered sales--</u>												
<u>U. S. No. 1, 50-lb. sack--</u>												
Spanish type, 1-3/4-3 in.	1.46	-	-	-	-	-	-	-	-	1.14	1.19	1.21
" " 3 in. minimum ..	2.77	-	-	-	-	-	-	-	-	2.00	1.91	2.01
White Spanish, 1-3/4-3 in.	2.92	-	-	-	-	-	-	-	-	1.40	1.89	2.13
" " 3 in. minimum ..	-	-	-	-	-	-	-	-	-	1.49	1.81	2.13
<u>Idaho-Oregon:</u>												
<u>Western Idaho-Malheur County Oregon:#</u>												
<u>Sales f.o.b. shipping point--</u>												
<u>U. S. No. 1, 50-lb. sack--</u>												
White Spanish, 2-3 1/8 in. ...	-	-	-	-	-	-	-	-	1.25	-	-	-
Yellow Spanish, 2-3 1/8 in. ...	-	-	-	-	-	-	-	-	.84	-	-	-
Yellow Spanish, 3 1/8 in. & larger	-	-	-	-	-	-	-	-	1.06	-	-	-
<u>Michigan:</u>												
<u>West Michigan Points:</u>												
<u>Sales f.o.b. shipping point--</u>												
<u>U. S. No. 1, 50-lb. sack--</u>												
Yellow Globe, 70% 2 in. & lgr.	1.24	1.42	1.13	-	-	-	1.28	1.17	1.08	1.26	1.33	1.26
<u>New York:</u>												
<u>Rochester, Western & Central Points:</u>												
<u>Sales f.o.b. shipping point and delivered sales shipping point basis--</u>												
<u>U. S. No. 1, 50-lb. sack--</u>												
Yellow Globe, 70-80% 2 in. & larger,	1.29	1.53	1.23	1.65	-	-	-	-	1.04	1.25	1.40	1.36

Reported only during September as no market news office in district during later months.

Table 3.--Continued

VEGETABLES--CONTINUED

Shipping point and description of sale	Jan.	Feb.	Mar.	Apr.	May	June	July	Aug.	Sept.	Oct.	Nov.	Dec.
- - - Dollars Per Unit - - -												
<u>Onions--Continued</u>												
<u>Texas:</u>												
<u>Sales f.o.b. shipping point--</u>												
<u>U. S. No. 1, 50-lb. sack--</u>												
<u>Laredo District:</u>												
Crystal White Wax, med.,	-	-	-	2.22	-	-	-	-	-	-	-	-
Granex, med.,	-	-	-	2.19	-	-	-	-	-	-	-	-
Grano, med.,	-	-	-	2.13	-	-	-	-	-	-	-	-
Grano, lge.,	-	-	-	2.20	-	-	-	-	-	-	-	-
Yellow Bermuda, med.,	-	-	-	2.52	-	-	-	-	-	-	-	-
<u>Lower Rio Grande Valley Points:</u>												
Crystal White Wax, med.,	-	-	2.83	-	-	-	-	-	-	-	-	-
Crystal White Wax, lge.,	-	-	2.76	-	-	-	-	-	-	-	-	-
Granex, med.,	-	-	1.82	-	-	-	-	-	-	-	-	-
Granox, lge.,	-	-	1.72	-	-	-	-	-	-	-	-	-
Grano, med.,	-	-	1.88	-	-	-	-	-	-	-	-	-
Grano, lge.,	-	-	2.02	-	-	-	-	-	-	-	-	-
Yellow Bermuda, med.,	-	-	2.15	-	-	-	-	-	-	-	-	-
<u>Winter Garden-Eagle Pass District:</u>												
Crystal White Wax, med.,	-	-	-	2.90	2.81	-	-	-	-	-	-	-
Grano, med.,	-	-	-	2.75	2.06	-	-	-	-	-	-	-
Grano, lge.,	-	-	-	2.56	1.70	-	-	-	-	-	-	-
Yellow Bermuda, med.,	-	-	-	3.15	2.58	-	-	-	-	-	-	-
<u>Virginia:</u>												
<u>Eastern Shore:</u>												
<u>Sales f.o.b. shipping point--</u>												
<u>85% or more, U.S. No. 1,</u>												
<u>50-lb. sack--</u>												
Yellow, 1-7/8 in min.,	-	-	-	-	-	3.11	-	-	-	-	-	-
<u>Washington:</u>												
<u>Walla-Walla District:</u>												
<u>Sales f.o.b. shipping point--</u>												
<u>50-lb. sack--</u>												
Yellow, med.	-	-	-	-	-	2.06	1.28	-	-	-	-	-
Yellow, large	-	-	-	-	-	2.06	1.46	-	-	-	-	-
<u>Peppers, Green</u>												
<u>California:</u>												
<u>North San Joaquin Valley-Stockton, Calif.</u>												
<u>Sales f.o.b. shipping point--</u>												
<u>Bushel hamper--</u>												
Calif., Wonder,	-	-	-	-	-	-	-	-	-	2.02	2.00	-
<u>Florida:</u>												
<u>Sales f.o.b. shipping point-unless stated:</u>												
<u>Ft. Myers-Immokalee Section:</u>												
<u>Bushel hamper--</u>												
Calif., Wonder, med.-lge.,	3.33	3.76	-	-	-	-	-	-	-	-	-	-
<u>Lake Okechobee Section:</u>												
<u>Bushel basket--</u>												
Calif., Wonder, med.-lge.,	3.29	3.82	4.38	5.95	-	-	-	-	-	-	2.98	4.15
<u>Plant City:</u>												
<u>Auction price to growers--</u>												
<u>Bushel basket--</u>												
Calif., Wonder, med.-lge.,	-	-	4.60	6.49	5.96	-	-	-	-	-	-	-
<u>Pompano Beach Section:</u>												
<u>Sales to local buyers--</u>												
<u>Bushel basket--</u>												
Calif., Wonder, med.-lge.,	2.99	3.45	4.49	6.40	-	-	-	-	-	-	2.89	4.67
World Boster, med.-lge.,	2.10	1.92	2.81	4.65	-	-	-	-	-	-	2.23	3.73
<u>Webster:</u>												
<u>Auction price to growers--</u>												
<u>Bushel field crate--</u>												
Calif., Wonder, field run,	-	-	-	7.06	5.55	-	-	-	-	-	-	-
<u>Mississippi:</u>												
<u>Auction price to growers--</u>												
<u>Bushel basket--</u>												
Calif., Wonder,	-	-	-	-	-	3.80	3.28	-	-	-	-	-

Table 3.--Continued

VEGETABLES--CONTINUED

Shipping point and description of sale	Jan.	Feb.	Mar.	Apr.	May	June	July	Aug.	Sept.	Oct.	Nov.	Dec.
- - - Dollars Per Unit - - -												
<u>Peppers, Green--Continued</u>												
<u>North Carolina:</u>												
<u>Auction price to growers--</u>												
<u>Bushel hamper--</u>												
<u>Clinton:</u>												
World Boster type.....	-	-	-	-	-	3.87	-	-	-	-	-	-
Italian type,	-	-	-	-	-	2.72	1.46	-	-	-	-	-
Calif., Wonder type,	-	-	-	-	-	4.16	2.72	-	-	-	-	-
<u>Faison:</u>												
World Boster type.....	-	-	-	-	-	4.33	-	-	-	-	-	-
Italian type,	-	-	-	-	-	2.57	1.79	-	-	-	-	-
Calif., Wonder type,	-	-	-	-	-	4.38	3.10	-	-	-	-	-
<u>Wallace:</u>												
Calif., Wonder type,	-	-	-	-	-	4.20	2.89	-	-	-	-	-
<u>Texas:</u>												
<u>Lower Rio Grande Valley Points:</u>												
<u>Sales f.o.b. shipping point--</u>												
<u>Bushel basket--</u>												
Calif., Wonder type, med.-lge...	-	-	-	-	-	-	-	-	-	-	2.09	-
<u>Potatoes, White</u>												
<u>Alabama:</u>												
<u>Poley & Southern Alabama Points:</u>												
<u>Sales f.o.b. shipping point and</u>												
<u>delivered sales shipping point basis--</u>												
<u>100-pound sack, washed--</u>												
<u>U.S. No. 1, size A</u>												
Round Red,	-	-	-	-	1.81	2.15	-	-	-	-	-	-
Sebago,	-	-	-	-	1.86	2.04	-	-	-	-	-	-
<u>U.S. No. 1, size B</u>												
Round Red,	-	-	-	-	1.24	1.16	-	-	-	-	-	-
Sebago,	-	-	-	-	1.14	1.11	-	-	-	-	-	-
<u>U.S. No. 2</u>												
Round Red,	-	-	-	-	1.29	1.30	-	-	-	-	-	-
Sebago,	-	-	-	-	1.15	1.34	-	-	-	-	-	-
<u>Arizona:</u>												
<u>Phoenix District:</u>												
<u>Sales f.o.b. shipping point--</u>												
<u>100-pound sack, washed--</u>												
<u>Round Red, U.S. No. 1 size A &</u>												
<u>U.S. No. 1 size A 2-in. min.</u>												
-	-	-	-	-	1.67	1.84	-	-	-	-	-	-
<u>Long Whites, U.S. No. 1, size</u>												
<u>A,</u>												
-	-	-	-	-	1.72	1.70	-	-	-	-	-	-
<u>California:</u>												
<u>Kern County Points, Bakersfield-</u>												
<u>Sales f.o.b. shipping point--</u>												
<u>100-pound sack, washed--</u>												
<u>Long White--</u>												
U.S. No. 1, size A,	-	-	-	2.30	1.70	1.40	1.60	-	-	-	-	-
U.S. No. 1, size B,	-	-	-	1.22	-	-	-	-	-	-	-	-
U.S. No. 2,	-	-	-	1.28	1.13	.77	.81	-	-	-	-	-
<u>Round Red--</u>												
U.S. No. 1, size A,	-	-	-	-	1.61	1.76	-	-	-	-	-	-
<u>Chino-Perris Valley District:</u>												
<u>Sales f.o.b. shipping point--</u>												
<u>100-pound sack, washed--</u>												
<u>Long White--</u>												
U.S. No. 1, size A,	-	-	-	-	-	2.26	-	-	-	-	-	-
U.S. No. 2,	-	-	-	-	-	1.24	-	-	-	-	-	-
<u>Stockton-Delta District:</u>												
<u>Sales f.o.b. shipping point and</u>												
<u>delivered sales shipping point basis--</u>												
<u>100-pound sack, washed--</u>												
<u>Long White--</u>												
U.S. No. 1, size A,	-	-	-	-	-	-	2.58	2.59	-	-	-	-
U.S. No. 2,	-	-	-	-	-	-	1.50	1.55	-	-	-	-

Table 3.--Continued

VEGETABLES--CONTINUED

Shipping point and description of sale	Jan.	Feb.	Mar.	Apr.	May	June	July	Aug.	Sept.	Oct.	Nov.	Dec.
- - - Dollars Per Unit - - -												
Potatoes, White--Continued												
Colorado:												
<u>Sales f.o.b. shipping point and delivered sales shipping point basis--</u>												
<u>100-pound sack, U.S. No. 1, size A, washed-</u>												
<u>Gilcrest District:</u>												
Cobblers, 2-inch min.,	-	-	-	-	-	-	-	1.79	-	-	-	-
Round Red, 2-inch min.,	-	-	-	-	-	-	-	2.24	2.37	-	-	-
Round Red, 2-3/4-in. min.,	-	-	-	-	-	-	-	2.41	2.57	-	-	-
<u>U.S. No. 2</u>												
Round Red, 2-inch min.,	-	-	-	-	-	-	-	1.35	1.59	-	-	-
<u>San Luis Valley:</u>												
<u>Red McClures--</u>												
2-3/4 in. min.,	2.12	1.99	1.83	1.67	-	-	-	-	-	2.82	2.89	2.73
2-1/8 in. min.,	1.97	1.81	1.63	1.38	-	-	-	-	-	2.38	2.51	2.35
2-1/8 in. min. unwashed,	-	1.51	1.39	1.23	-	-	-	-	-	2.15	2.42	2.21
<u>U.S. No. 2</u>												
Washed, 2-1/8 in. min.,	-	1.34	1.27	1.07	-	-	-	-	-	1.79	1.85	1.82
<u>Russet Burbank, U.S. No. 1, size A:</u>												
4-Oz. min. washed,	2.72	2.77	-	-	-	-	-	-	-	2.49	2.48	2.42
Connecticut:												
<u>Rockville Area:</u>												
<u>Sales f.o.b. shipping point-</u>												
<u>and sales to local buyers--</u>												
<u>U.S. No. 1, size A, 2-inch min.</u>												
Katahdin, unwashed, 100-lb sack												
and 50-lb. sack cwt,	2.30	2.01	1.98	1.92	-	-	-	-	-	-	-	2.19
Florida:												
<u>Sales f.o.b. shipping point:</u>												
<u>Dade County Section:</u>												
<u>50-pound sack, washed-</u>												
<u>Round Red--</u>												
U. S. No. 1, size A,	-	1.43	1.36	1.02	-	-	-	-	-	-	-	-
U. S. No. 1, size B,	-	1.43	1.37	1.01	-	-	-	-	-	-	-	-
<u>Sebago--</u>												
U.S. No. 1, size A,	-	-	1.37	1.17	-	-	-	-	-	-	-	-
U.S. No. 1, size B,	-	-	-	.96	-	-	-	-	-	-	-	-
<u>Ft. Myer-Immokalee Section:</u>												
<u>50-pound sack, washed,</u>												
<u>Round Red--</u>												
U.S. No. 1, size A,	1.98	1.48	1.52	-	-	-	-	-	-	-	-	-
U.S. No. 1, size B,	1.98	1.48	1.52	-	-	-	-	-	-	-	-	-
<u>Sebago--</u>												
U.S. No. 1, size A,	-	1.95	1.65	-	-	-	-	-	-	-	-	-
U.S. No. 1, size B,	-	1.50	-	-	-	-	-	-	-	-	-	-
<u>Hastings:</u>												
<u>Sales f.o.b. shipping point and</u>												
<u>delivered sales shipping point basis-</u>												
<u>U.S. No. 1, size A, washed--</u>												
<u>100-pound sack--</u>												
Round Red,	-	-	-	2.23	2.15	-	-	-	-	-	-	-
Sebago,	-	-	-	2.32	2.17	-	-	-	-	-	-	-
<u>U.S. No. 1, size B, washed--</u>												
<u>100-pound sacks--</u>												
Round Red,	-	-	-	-	1.83	-	-	-	-	-	-	-
Sebago,	-	-	-	1.35	1.28	-	-	-	-	-	-	-
<u>50-pound sack--</u>												
<u>U.S. No. 1, size A,</u>												
Round Red,	-	-	-	1.21	1.17	-	-	-	-	-	-	-
Sebago,	-	-	-	1.26	1.19	-	-	-	-	-	-	-
<u>U.S. No. 1, size B,</u>												
Round Red,	-	-	-	-	.96	-	-	-	-	-	-	-
Sebago,	-	-	-	.71	.70	-	-	-	-	-	-	-
<u>Lake Okechobee Section:</u>												
<u>50-pound sack, washed-</u>												
<u>Round Red--</u>												
U.S. No. 1, size A,	1.90	-	-	1.10	1.17	-	-	-	-	-	-	1.92
U.S. No. 1, size B,	1.86	-	-	-	-	-	-	-	-	-	-	2.17
<u>Sebago--</u>												
U.S. No. 1, size A,	-	-	1.45	1.32	1.19	-	-	-	-	-	-	-

Table 3.--Continued

VEGETABLES--CONTINUED

Shipping point and description of sale	Jan.	Feb.	Mar.	Apr.	May	June	July	Aug.	Sept.	Oct.	Nov.	Dec.
-- - - Dollars Per Unit - - -												
<u>Potatoes, White--Continued</u>												
<u>Idaho:</u>												
<u>Idaho Falls-Twin Falls District:</u>												
<u>Sales f.o.b. shipping point and delivered sales shipping point basis--</u>												
<u>Russet Burbank, washed, 2-inch min.</u>												
<u>U. S. No. 1 size A--</u>												
10-20%, 10-oz. & larger,	2.26	2.12	2.01	1.74	-	-	-	-	-	2.15	2.25	2.23
20-30%, 10-oz. & larger,	2.38	2.21	2.14	1.89	-	-	-	-	2.21	2.27	2.39	2.35
U.S. No. 2, 5-oz. min.,	1.44	1.33	1.34	1.22	-	-	-	-	1.31	1.60	1.54	1.29
<u>Sales f.o.b. cash truck--</u>												
<u>Russet Burbank, washed, U.S. No. 1, size A</u>												
10-20%, 10-oz. & larger,	2.13	1.99	1.85	1.65	-	-	-	-	2.04	2.07	2.13	2.11
20-30%, 10-oz. & larger,	2.26	2.09	1.99	1.79	-	-	-	-	2.13	2.14	2.29	2.25
U.S. No. 2, 5-oz. min.,	1.35	1.22	1.23	1.15	-	-	-	-	1.27	1.51	1.43	1.16
<u>Western Idaho and Malheur County, Oregon</u>												
<u>Sales f.o.b. shipping point and delivered sales shipping point basis--</u>												
<u>100-pound sack, washed-</u>												
<u>Dazoc--</u>												
U.S. No. 1, size A, 1-7/8	-	-	-	-	-	-	1.94	-	-	-	-	-
<u>Long White--</u>												
U.S. No. 1, size A, 2-1/8 in. min.	-	-	-	-	-	-	2.31	2.26	-	-	-	-
U.S. No. 2,	-	-	-	-	-	-	-	1.30	-	-	-	-
<u>Early Gems--</u>												
U.S. No. 1, size A	-	-	-	-	-	-	2.46	2.70	-	-	-	-
<u>Russet Burbank--</u>												
U.S. No. 1, size A, 2-1/8 in. or 4-oz. min.,	-	-	-	-	-	-	-	2.53	2.58	-	-	-
U.S. No. 2,	-	-	-	-	-	-	-	1.22	1.24	-	-	-
<u>Sales f.o.b. cash truck--</u>												
<u>100-pound sack, washed</u>												
<u>Dazoc--</u>												
U.S. No. 1, size A, 1-7/8 in.	-	-	-	-	-	-	1.78	-	-	-	-	-
<u>Long White--</u>												
U.S. No. 1, size A, 2-1/8 in. min.	-	-	-	-	-	-	2.29	2.14	-	-	-	-
U.S. No. 2,	-	-	-	-	-	-	1.22	1.21	-	-	-	-
<u>Early Gems--</u>												
U.S. No. 1, size A, 2-1/8 in. min.	-	-	-	-	-	-	2.34	2.67	-	-	-	-
U.S. No. 2,	-	-	-	-	-	-	1.35	1.52	-	-	-	-
<u>Russet Burbank--</u>												
U.S. No. 1, size A, 2-1/8 in. or 4-oz. min.,	-	-	-	-	-	-	-	2.43	2.49	-	-	-
U.S. No. 2,	-	-	-	-	-	-	-	1.23	1.17	-	-	-
<u>Maine:</u>												
<u>Aroostook County Points, Prasque Isle-</u>												
<u>Sales f.o.b. shipping point and delivered sales shipping point basis--</u>												
<u>Various varieties, mostly Katahdin type</u>												
U.S. No. 1, size A, 2-1/4-4 in.												
50-pound sack,92	.78	.72	.70	.78	-	-	-	-	.77	.83	.88
<u>Massachusetts:</u>												
<u>Connecticut River Valley Points:</u>												
<u>South Deerfield:</u>												
<u>Sales f.o.b. shipping point--</u>												
<u>U.S. No. 1, unwashed</u>												
<u>Various varieties, mostly Katahdin</u>												
100-pound sack,	2.21	1.94	1.90	-	-	-	-	-	-	-	2.12	2.17
50-pound sack,	1.15	.98	.95	-	-	-	-	-	-	-	1.10	1.08
<u>Michigan:</u>												
<u>Delivered sales shipping point basis--</u>												
<u>Various varieties, mostly Katahdin type, unwashed, U.S. No. 1</u>												
<u>West Michigan Points--</u>												
50-pound paper sack,	1.01	.93	.86	-	-	-	-	-	1.07	1.15	1.24	1.21
<u>Day City Points:</u>												
<u>Cobblers--</u>												
50-pound sack,	-	-	-	-	-	-	.87	.84	-	-	-	-
<u>Other Round Whites--</u>												
50-pound sack,	-	-	-	-	-	-	-	1.00	-	-	-	-

Table 3.--Continued

VEGETABLES--CONTINUED

Shipping point and description of sale	Jan.	Feb.	Mar.	Apr.	May	June	July	Aug.	Sept.	Oct.	Nov.	Dec.
-- Dollars Per Unit --												
<u>Potatoes, White--Continued</u>												
<u>Minnesota:</u>												
<u>East Grand Forks (Red River Valley of Minn.-N. Dak.)</u>												
<u>Sales f.o.b. shipping point and delivered sales--</u>												
<u>Shipping point basis--</u>												
<u>Round Reds mostly</u>												
<u>Pontiacs, washed--100-lb. sack--</u>												
U.S. No. 1, size A,	-	-	-	-	-	-	-	-	2.08	2.30	2.47	2.24
U.S. No. 2,	-	-	-	-	-	-	-	-	1.41	1.57	1.86	1.66
Cobblers, unwashed, U.S. No. 1, size A	-	-	-	-	-	-	-	-	1.54	1.47	1.52	-
<u>New Jersey:</u>												
<u>Central New Jersey Points:</u>												
<u>Sales f.o.b. shipping point and delivered sales shipping point basis--</u>												
<u>100-pound sack, U.S. No. 1, size A</u>												
<u>Unwashed--</u>												
Cobblers,	-	-	-	-	-	-	1.87	-	-	-	-	-
Chippewas & Katahdin,	-	-	-	-	-	-	2.07	1.98	2.03	-	-	-
<u>New York:</u>												
<u>Riverhead & Nearby Long Island Points:</u>												
<u>Sales f.o.b. shipping point and delivered sales shipping point basis--</u>												
<u>100-pound and 50-pound sack per cwt--</u>												
Cobbler,	-	-	-	-	-	-	1.81	1.97	2.00	-	-	-
Chippewas & Katahdin,	2.39	-	-	-	-	-	-	2.01	2.00	2.00	2.24	2.25
<u>Rochester, Western & Central New York Points--</u>												
<u>Sales f.o.b. shipping point and delivered sales shipping point basis--</u>												
<u>Various varieties, unwashed</u>												
<u>U.S. No. 1, size A</u>												
50-pound sack,	1.15	.98	.96	.98	-	-	-	1.18	1.23	1.24	1.26	1.22
15-pound sack,41	.37	.37	.38	-	-	-	.41	.41	.41	.44	.43
<u>North Carolina:</u>												
<u>Washington & Eastern N.C. Points:</u>												
<u>Sales f.o.b. shipping point and delivered sales shipping point basis--</u>												
<u>U.S. No. 1, size A, 100-pound sack</u>												
Canso, washed	-	-	-	-	-	2.05	-	-	-	-	-	-
" unwashed	-	-	-	-	-	1.92	-	-	-	-	-	-
Cobbler, washed	-	-	-	-	-	1.80	1.74	-	-	-	-	-
" unwashed	-	-	-	-	-	1.61	1.65	-	-	-	-	-
Round Red, washed	-	-	-	-	-	2.04	2.36	-	-	-	-	-
Sebago, washed	-	-	-	-	-	2.23	2.21	-	-	-	-	-
" unwashed	-	-	-	-	-	2.06	2.06	-	-	-	-	-
<u>50-pound sack--</u>												
Cobbler, washed	-	-	-	-	-	.96	.97	-	-	-	-	-
<u>Oregon:</u>												
<u>Central Area:</u>												
<u>Sales f.o.b. shipping point--</u>												
<u>100-lb. sacks, washed</u>												
<u>Russet Burbank--</u>												
U.S. No. 1, size A,	2.30	2.15	2.07	1.84	-	-	-	-	-	2.15	2.45	2.31
U.S. No. 2,	1.38	1.28	1.10	1.03	-	-	-	-	-	1.27	1.48	1.33
<u>Pennsylvania:</u>												
<u>East Penna. Points--</u>												
<u>Sales f.o.b. shipping point and delivered sales shipping point basis--</u>												
<u>U.S. No. 1, size A, unwashed</u>												
<u>Katahdin type--</u>												
50-pound sack,	1.20	1.11	-	-	-	-	-	-	-	1.11	1.25	1.22
<u>South Carolina:</u>												
<u>Charleston & Nearby Points:</u>												
<u>Sales f.o.b. shipping point--</u>												
<u>100-pound sack, washed</u>												
<u>Sebago--</u>												
U.S. No. 1, size A,	-	-	-	-	-	2.26	-	-	-	-	-	-
U.S. No. 1, size B,	-	-	-	-	-	1.12	-	-	-	-	-	-

Table 3.--Continued

VEGETABLES--CONTINUED

Shipping point and description of sale	Jan.	Feb.	Mar.	Apr.	May	June	July	Aug.	Sept.	Oct.	Nov.	Dec.
- - - Dollars Per Unit - - -												
<u>Potatoes, White--Continued</u>												
<u>Virginia:</u>												
<u>East Shore, Onley:</u>												
<u>Sales f.o.b. shipping point and delivered sales shipping point basis--</u>												
<u>U.S. No. 1, size A, unwashed--</u>												
Cobbler, 100-pound sack,	-	-	-	-	-	1.75	1.60	-	-	-	-	-
" 50-pound sacked cwt ...	-	-	-	-	-	1.82	1.70	-	-	-	-	-
Pungo, 100-pound sack,	-	-	-	-	-	-	1.88	-	-	-	-	-
Katabdin, 100-pound sack,	-	-	-	-	-	-	1.92	-	-	-	-	-
<u>Washington:</u>												
<u>Yakima Valley, Columbia Basin District:</u>												
<u>Sales f.o.b. shipping point--</u>												
<u>100-pound sack washed, unless stated--</u>												
<u>Round Red--</u>												
U.S. No. 1, size A,	-	-	-	-	-	-	1.71	-	-	-	-	-
U.S. No. 2,	-	-	-	-	-	-	1.24	-	-	-	-	-
<u>Long Whites--</u>												
U.S. No. 1, size A, 2-in. min... ..	-	-	-	-	-	-	2.47	2.30	-	-	-	-
U.S. No. 2,	-	-	-	-	-	-	1.46	1.33	-	-	-	-
<u>Russet Burbank--</u>												
U.S. No. 1, size A, 2-in. min... ..	2.02	1.97	1.87	-	-	-	-	2.40	1.98	1.80	2.23	2.20
U.S. No. 2,	-	-	-	-	-	-	-	1.28	1.02	1.24	-	-
U.S. No. 2, 50-lb. sack,70	.70	.66	-	-	-	-	.65	.52	.66	.87	.79
<u>Radishes</u>												
<u>Florida:</u>												
<u>Lake Okechobee Section:</u>												
<u>Sales f.o.b. shipping point--</u>												
<u>16-qt basket, 30's--</u>												
8-oz. film bags,	1.05	1.06	1.31	1.04	1.64	-	-	-	-	-	.87	2.51
<u>Spinach</u>												
<u>Texas:</u>												
<u>Eagle Pass-Winter Garden District:</u>												
<u>Sales f.o.b. shipping point--</u>												
<u>Bushel basket--</u>												
Savoy type,	1.20	1.06	-	-	-	-	-	-	-	-	-	1.33
Savoy type, cutleaf for packaging	1.61	1.46	-	-	-	-	-	-	-	-	-	1.90
<u>Sweetpotatoes</u>												
<u>Louisiana:</u>												
<u>Southwest Louisiana Points:</u>												
<u>Sales f.o.b. shipping point--</u>												
<u>Porto Rican, 50-lb. crate--</u>												
U.S. No. 1, cured,	3.75	3.75	3.76	4.38	-	-	-	-	-	-	4.80	4.75
U.S. No. 1, uncured,	-	-	-	-	-	-	4.37	3.01	2.95	2.87	3.21	3.50
U.S. No. 2, cured,	1.88	1.88	1.91	2.48	-	-	-	-	-	-	3.00	2.82
U.S. No. 2, uncured,	-	-	-	-	-	-	2.44	2.01	1.94	1.90	1.98	2.29
<u>North Carolina:</u>												
<u>Auction Sales--</u>												
<u>Bushel basket- Porto Rican type--</u>												
Benson,	-	-	-	-	-	-	-	-	-	2.12	2.27	-
Bethel,	-	-	-	-	-	-	-	-	2.09	2.04	1.73	-
Magnolia,	-	-	-	-	-	-	-	-	-	2.15	2.00	-
Tabor City,	-	-	-	-	-	-	-	-	-	2.11	2.08	-
<u>Maryland:</u>												
<u>Eastern Shore:</u>												
<u>Sales f.o.b. shipping point and delivered sales shipping point basis--</u>												
<u>U.S. No. 1</u>												
<u>Washed & waxed, bushel basket--</u>												
Okla., type, & No. 46,	-	-	-	-	-	-	-	-	1.63	1.94	-	-
<u>New Jersey:</u>												
<u>South New Jersey Points:</u>												
<u>delivered sales shipping point basis--</u>												
<u>U.S. No. 1, or better, Washed, waxed & cured--</u>												
<u>Bushel basket--</u>												
Orange Jersey type,	2.54	2.59	2.64	3.36	-	-	-	-	-	-	3.04	3.40

VEGETABLES--CONTINUED

Shipping point and description of sale	Jan.	Feb.	Mar.	Apr.	May	June	July	Aug.	Sept.	Oct.	Nov.	Dec.
-- Dollars Per Unit --												
<u>Sweetpotatoes--Continued</u>												
<u>New Jersey: (Continued)</u>												
<u>South New Jersey Points:</u>												
<u>Delivered sales shipping point basis--</u>												
<u>U.S. No. 1, or better, Washed, waxed & cured--</u>												
<u>Bushel basket--</u>												
Yellow Jersey type,	3.41	3.47	-	-	-	-	-	-	-	-	-	-
Yellow Jersey (Swadesboro Sect) Red soil	-	4.01	4.12	4.14	-	-	-	-	-	-	4.44	4.43
Virginian,	2.56	2.83	3.03	3.46	-	-	-	-	-	-	-	3.51
<u>Virginia:</u>												
<u>Eastern Shore:</u>												
<u>Sales f.o.b. shipping point and</u>												
<u>delivered sales shipping point basis--</u>												
<u>U.S. No. 1</u>												
<u>Washed & waxed, bushel basket--</u>												
Oklahoma type & No. 46,	-	-	-	-	-	-	-	-	1.62	1.86	-	-
<u>Tomatoes</u>												
<u>California:</u>												
<u>Sales f.o.b. shipping point--</u>												
<u>Merced District:</u>												
<u>Green, wrapped, U.S. No. 1</u>												
<u>3-layer lug--</u>												
6 x 6 & larger,	-	-	-	-	-	-	2.70	-	-	-	-	-
6 x 7,	-	-	-	-	-	-	2.24	-	-	-	-	-
<u>Sacramento-North San Joaquin Valley Points:</u>												
<u>85% or more, U.S. No. 1</u>												
<u>Green, wrapped, lug box--</u>												
6 x 6 & larger,	-	-	-	-	-	-	-	2.70	2.93	3.67	-	-
6 x 7,	-	-	-	-	-	-	-	2.34	2.68	3.28	-	-
7 x 7,	-	-	-	-	-	-	-	1.86	2.18	2.77	-	-
<u>San Joaquin Valley-Fresno:</u>												
<u>Pinks - 2 layer flats--</u>												
<u>Unclassified--</u>												
6 x 6 & larger,	-	-	-	-	-	2.39	2.45	-	-	-	-	-
6 x 7,	-	-	-	-	-	1.78	1.62	-	-	-	-	-
<u>Florida:</u>												
<u>Sales f.o.b. shipping point--</u>												
<u>Dud: County Section:</u>												
<u>85% or more, U.S. No. 1</u>												
<u>Green, unwrapped, 60-lb. crate--</u>												
6 x 6 & larger,	5.58	5.86	6.68	8.50	-	-	-	-	-	-	-	9.28
6 x 7,	4.28	4.69	4.91	7.00	-	-	-	-	-	-	-	6.17
7 x 7,	2.81	2.98	3.01	4.00	-	-	-	-	-	-	-	3.28
<u>Ft. Pierce Section:</u>												
<u>Green, unwrapped, 60-lb. crate--</u>												
<u>85% or more, U. S. No. 1</u>												
6 x 6 & larger,	-	-	-	10.79	10.25	-	-	-	-	-	10.21	7.88
6 x 7,	-	-	-	3.82	8.50	-	-	-	-	-	8.82	4.81
7 x 7,	-	-	-	6.62	6.25	-	-	-	-	-	6.00	2.88
<u>Immokalee Section-Ft. Myers:</u>												
<u>Green, unwrapped, 60-lb. crate--</u>												
<u>85% or more, U. S. No. 1</u>												
6 x 6 & larger,	6.10	-	-	-	-	-	-	-	-	-	-	-
6 x 7,	4.95	-	-	-	-	-	-	-	-	-	-	-
7 x 7,	3.44	-	-	-	-	-	-	-	-	-	-	-
<u>Nanatee-Buskin Section:</u>												
<u>Green, unwrapped, 60-lb. crate--</u>												
<u>85% or more, U.S. No. 1</u>												
6 x 6 & larger,	-	-	-	11.86	13.38	-	-	-	-	-	-	-
6 x 7,	-	-	-	9.94	11.82	-	-	-	-	-	-	-
7 x 7,	-	-	-	7.83	9.44	-	-	-	-	-	-	-
<u>Oxford Section:</u>												
<u>Green, unwrapped, 60-lb. crate--</u>												
<u>85% or more, U.S. No. 1</u>												
6 x 6 & larger,	-	-	-	-	8.20	-	-	-	-	-	-	-
6 x 7,	-	-	-	-	6.95	-	-	-	-	-	-	-
7 x 7,	-	-	-	-	5.94	-	-	-	-	-	-	-

Table 3.--Continued

VEGETABLES--CONTINUED

Shipping point and description of sale	Jan.	Feb.	Mar.	Apr.	May	June	July	Aug.	Sept.	Oct.	Nov.	Dec.
-- -- Dollars Per Unit -- --												
<u>Tomatoes--Continued</u>												
<u>Florida: (Continued)</u>												
<u>Pompano Beach Section:</u>												
<u>Sales to local buyers--</u>												
8-lb carton, vine ripened, Hydro-ponic, film wrapped med.-lge...	2.42	1.80	-	-	-	-	-	-	-	-	-	-
8-lb. carton, vine ripened, stake grown, unwrapped, med-lge. stems	1.58	1.52	1.77	-	-	-	-	-	-	-	-	-
8-lb. carton, vine ripened, stake grown, wrapped med.-lge, no stems	1.63	1.52	1.81	1.48	-	-	-	-	-	-	-	1.63
8-lb. flats, vine ripened, wrapped med-lge., no stems,	-	-	1.80	1.79	-	-	-	-	-	-	-	-
10-lb. basket vine ripened,	-	-	-	-	-	-	-	-	-	-	1.91	-
<u>Webster:</u>												
<u>Auction price to growers--</u>												
Field run,	-	-	-	-	6.82	-	-	-	-	-	-	-
<u>Michigan:</u>												
<u>West Michigan Points:</u>												
<u>Sales f.o.b. shipping point--</u>												
<u>Green, unwrapped, 60-lb. crate--</u>												
<u>U.S. No. 1</u>												
6 x 6 & larger,	-	-	-	-	-	-	-	3.66	-	-	-	-
6 x 7,	-	-	-	-	-	-	-	2.06	-	-	-	-
<u>Benton Harbor:</u>												
<u>Cash market growers sales--</u>												
Mich., No. 1, 8-qt. carton	-	-	-	-	-	-	1.68	.98	1.08	-	-	-
Mich., No. 1, 8 2-qt. bskt.	-	-	-	-	-	-	4.25	2.32	2.67	-	-	-
Mich., No. 2, 12-qt. bskt.	-	-	-	-	-	-	1.34	.76	.86	-	-	-
Mich., Plum type, 16-qt. crate..	-	-	-	-	-	-	6.02	2.62	2.33	-	-	-
<u>Mississippi:</u>												
<u>Jackson: (Crystal Springs Section)</u>												
<u>Green, Field run--</u>												
60-lb. crate,	-	-	-	-	-	4.48	-	-	-	-	-	-
<u>New York:</u>												
<u>Rochester, Western & Central New York Points:</u>												
<u>Sales f.o.b. shipping point and delivered sales shipping point basis--</u>												
<u>Green, unwrapped, 60-lb. crate--</u>												
6 x 6 & larger,	-	-	-	-	-	-	-	3.79	4.24	-	-	-
6 x 7,	-	-	-	-	-	-	-	2.83	3.10	-	-	-
<u>South Carolina:</u>												
<u>Charleston County Points:</u>												
<u>Sales f.o.b. shipping point--</u>												
<u>Green, unwrapped, 60-lb. crate--85% U.S. No. 1 or better--</u>												
6 x 6 & larger,	-	-	-	-	-	11.02	-	-	-	-	-	-
6 x 7,	-	-	-	-	-	8.08	-	-	-	-	-	-
7 x 7,	-	-	-	-	-	5.89	-	-	-	-	-	-
<u>Virginia:</u>												
<u>Onley-Eastern Shore Points--</u>												
<u>Sales f.o.b. shipping point--</u>												
<u>85% U.S. No. 1 or better--60-lb. crate</u>												
<u>Green</u>												
5 x 6,	-	-	-	-	-	6.31	5.29	-	-	-	-	-
6 x 6,	-	-	-	-	-	5.31	5.29	-	-	-	-	-
6 x 7,	-	-	-	-	-	4.88	4.10	-	-	-	-	-
7 x 7,	-	-	-	-	-	3.31	2.44	-	-	-	-	-
<u>Vine ripened--Trellis grown--</u>												
20-lb. crate,	-	-	-	-	-	-	3.34	-	-	-	-	-
10-lb. carton,	-	-	-	-	-	-	1.90	-	-	-	-	-
<u>Texas:</u>												
<u>East Texas Points:</u>												
<u>Sales f.o.b. shipping point--</u>												
<u>85% or more, U.S. No. 1</u>												
<u>Green, wrapped, 1up box--</u>												
6 x 6 & larger,	-	-	-	-	-	4.78	-	-	-	-	-	-
6 x 7,	-	-	-	-	-	3.96	-	-	-	-	-	-
7 x 7,	-	-	-	-	-	2.72	-	-	-	-	-	-

Table 3.--Continued

VEGETABLES--CONTINUED

Shipping point and description of sale	Jan.	Feb.	Mar.	Apr.	May	June	July	Aug.	Sept.	Oct.	Dec.	Dec.
---	------	------	------	------	-----	------	------	------	-------	------	------	------

- - - Dollars Per Unit - - -

Tomatoes--Continued

Texas: (Continued)

Lower Rio Grande Valley Points:

Sales f.o.b. shipping point--

Green, wrapped,

U.S. No. 1, lug box

6 x 6 & larger	-	-	-	-	5.12	-	-	-	-	-	-	-
6 x 7,	-	-	-	-	3.96	-	-	-	-	-	-	-
7 x 7,	-	-	-	-	2.84	-	-	-	-	-	-	-

Table 4.--Computed wholesale values ^{1/} per carlot of domestic fresh fruits and vegetables, New York City and Chicago, by months, 1956-1957.
(Values are based on stock of good merchantable quality and condition)

Year, market, and commodity	Jan.	Feb.	Mar.	Apr.	May	June	July	Aug.	Sept.	Oct.	Nov.	Dec.	Year
- - - Dollars Per Unit - - -													
1956 - New York City													
Fruits	2056	2242	2345	2253	2675	3163	2531	2376	2594	3021	3070	2722	2632
Vegetables	1964	1676	1882	1846	2142	2225	1769	1244	1176	1476	1780	1840	1756
Fruits and Vegetables	1993	1867	2013	1942	2305	2630	2128	1756	1738	2100	2246	2127	2080
1956 - Chicago													
Fruits	2311	2399	2480	2790	3507	3666	3009	2806	2632	2896	2819	2803	2917
Vegetables	1623	1674	1910	1985	2018	2275	2155	1433	1161	1383	1666	1727	1757
Fruits and Vegetables	1813	1898	2054	2175	2434	2841	2549	2029	1717	1863	1985	2012	2145
1957 - New York City													
Fruits	2570	2489	2244	2461	2797	3201	3054	2509	2580	2665	2521	2280	2681
Vegetables	1716	1668	1681	1863	1935	1809	1724	1596	1389	1507	1607	1883	1702
Fruits and Vegetables	1977	1917	1836	2017	2187	2378	2327	2010	1866	1964	1926	2008	2055
1957 - Chicago													
Fruits	2707	2505	2660	2856	3341	3776	3528	2620	2558	2643	2424	2530	2925
Vegetables	1565	1587	1651	1849	1955	1906	1813	1572	1377	1480	1749	2098	1719
Fruits and Vegetables	1860	1821	1885	2068	2314	2545	2516	2003	1791	1855	1923	2215	2091

^{1/} The monthly carlot values in this table were computed from representative average prices including both private sales and auction transactions, and average quantities per carload (pre-war basis) of each leading fruit and vegetable. For each commodity this average monthly carlot value was weighted by domestic carload, boat and available truck unloads in obtaining a monthly average carlot value for all commodities. Estimates of farmers' market truck receipts were not available for Chicago. Estimated values for the year were obtained by weighting the monthly figures shown in the table by the monthly unloads.

Fruits include: Apples, blueberries, cantaloups, cherries, cranberries, grapefruit, grapes, honeyball melons, honeydew melons, lemons, oranges, peaches, pears, plums and fresh prunes, strawberries, and watermelons. Vegetable include: Asparagus, beets, snap beans, broccoli, cabbage, carrots, cauliflower, celery, corn, cucumbers, eggplant, escarole, kale, lettuce, onions, peas, peppers, potatoes, radishes, spinach, sweetpotatoes, and tomatoes.

The ratio of the volume used each month to total domestic unloads varied generally from 85 to 95 percent. Some of the minor commodities were not used in the computations. Their inclusion would make little difference in the average value per car.

Table 5.--Index of wholesale price of fresh fruits and vegetables at New York City and Chicago, by months, 1938-57 ^{1/}

Corresponding month 1935-39 = 100

Market, commodity and year	Jan.	Feb.	Mar.	Apr.	May	June	July	Aug.	Sept.	Oct.	Nov.	Dec.	Year
NEW YORK													
Fruits													
1938	93	89	89	88	96	84	91	96	89	88	94	98	92
1939	80	80	79	78	79	90	88	83	98	100	92	80	87
1940	81	90	88	92	99	111	90	91	87	102	95	96	95
1941	93	91	92	87	89	119	106	105	114	132	126	111	108
1942	100	103	107	110	109	151	135	130	140	137	159	160	132
1943	117	132	143	137	170	240	224	238	212	204	189	168	186
1944	161	155	167	152	162	213	192	160	169	188	206	194	178
1945	186	177	173	167	170	168	165	167	193	190	194	211	179
1946	203	192	192	176	234	188	195	160	184	215	186	187	190
1947	163	182	176	164	185	200	168	163	180	181	167	152	174
1948	149	149	151	129	162	187	201	180	180	175	174	172	172
1949	185	191	192	187	192	209	195	147	145	173	162	163	176
1950	189	196	195	170	197	220	198	174	172	188	187	175	189
1951	179	197	175	150	160	189	194	187	195	195	178	176	183
1952	182	179	189	169	167	229	247	187	202	220	206	203	203
1953	213	212	212	195	188	221	229	192	198	204	216	194	207
1954	191	191	189	172	193	224	235	196	217	217	211	188	208
1955	192	193	178	196	210	271	251	188	179	189	194	187	205
1956	184	195	196	170	200	272	248	211	218	240	236	229	223
1957	230	216	188	186	209	275	299	223	216	212	194	192	227
Vegetables													
1938	98	93	86	89	90	90	93	99	100	105	92	99	93
1939	95	95	101	106	90	101	97	85	86	92	98	96	94
1940	104	114	109	110	112	99	92	94	81	75	83	88	94
1941	106	109	113	112	106	105	112	100	95	109	130	128	107
1942	141	136	122	132	122	118	138	161	128	138	153	173	134
1943	194	194	297	220	219	231	198	184	197	188	195	200	207
1944	203	180	163	172	180	179	204	177	194	174	173	191	179
1945	198	182	175	191	184	219	276	216	164	179	181	196	193
1946	185	186	192	190	172	186	203	189	177	157	176	167	179
1947	189	202	194	181	206	190	196	184	197	206	218	225	194
1948	230	227	204	216	230	201	236	190	183	170	185	188	200
1949	227	224	214	199	202	191	220	202	194	166	204	190	198
1950	187	177	162	180	178	177	195	153	147	161	180	195	172
1951	207	212	175	192	189	220	188	175	178	196	257	289	203
1952	265	235	232	260	224	231	317	251	226	215	248	265	243
1953	274	229	237	230	190	264	220	210	158	164	190	201	212
1954	203	193	194	177	192	175	230	199	180	175	187	208	189
1955	214	215	210	206	196	155	183	239	220	206	224	212	202
1956	255	215	219	198	236	280	294	212	184	215	227	229	228
1957	222	214	196	200	213	228	286	271	217	215	205	234	221
Fruits and Vegetables													
1938	95	91	86	88	93	89	92	97	92	93	92	100	92
1939	91	92	94	97	87	97	88	81	86	91	92	91	90
1940	95	107	102	107	108	102	88	87	79	86	88	97	94
1941	103	105	106	105	101	111	106	96	100	117	127	124	107
1942	124	125	119	127	119	132	133	135	127	131	154	171	132
1943	160	171	231	190	201	227	195	199	196	181	180	188	193
1944	187	173	169	168	173	186	193	160	171	172	177	196	175
1945	195	184	177	185	177	201	207	173	167	170	179	204	183
1946	193	193	191	185	185	186	193	163	170	176	171	179	180
1947	180	202	192	178	200	194	177	162	181	182	184	196	183
1948	195	196	185	186	205	195	211	173	173	163	173	184	185
1949	211	215	207	196	197	201	203	161	158	157	175	181	185
1950	190	190	175	179	181	201	194	157	148	164	173	189	177
1951	196	212	177	179	178	209	191	179	181	184	207	243	192
1952	230	215	217	231	203	236	274	203	202	202	216	239	221
1953	248	227	229	219	190	247	224	189	173	174	193	198	206
1954	198	195	181	176	196	210	232	196	195	188	189	199	196
1955	207	208	200	202	199	208	221	200	191	186	189	202	201
1956	225	210	210	189	223	283	264	201	191	212	218	229	222
1957	223	205	192	196	212	256	289	230	206	198	187	216	219

See footnote at end of table.

Table 5.--Continued

Market, commodity and year	Jan.	Feb.	Mar.	Apr.	May	June	July	Aug.	Sept.	Oct.	Nov.	Dec.	Year
CHICAGO													
Fruits													
1938	83	84	82	85	85	85	97	98	89	93	94	100	91
1939	85	82	82	88	79	97	97	87	103	105	94	87	92
1940	81	88	96	104	94	115	106	112	91	97	103	100	100
1941	95	94	98	89	83	112	113	108	101	130	132	115	108
1942	99	100	112	113	94	149	162	147	137	146	162	166	136
1943	131	142	151	150	169	236	245	230	221	227	219	196	200
1944	154	158	172	169	159	215	201	174	161	208	202	177	180
1945	157	168	174	153	175	187	197	216	173	215	219	216	190
1946	194	209	196	192	171	181	223	187	176	219	198	180	194
1947	152	190	177	162	177	212	238	194	183	180	164	157	186
1948	135	143	155	171	145	187	222	210	181	190	185	183	181
1949	184	185	206	200	211	207	218	171	155	179	161	183	188
1950	182	202	196	189	191	212	249	235	202	201	189	191	207
1951	172	195	196	163	163	190	218	231	211	203	200	204	198
1952	202	202	202	183	197	237	254	214	209	231	211	218	217
1953	204	206	233	221	203	210	251	221	222	227	238	220	223
1954	199	181	206	202	185	183	275	243	241	243	226	210	221
1955	228	195	217	209	248	340	333	283	222	223	217	220	254
1956	196	203	210	210	248	331	337	297	230	248	236	237	262
1957	230	212	225	215	236	341	395	278	223	226	203	214	262
Vegetables													
1938	93	91	87	94	89	91	80	86	91	94	95	105	92
1939	96	89	92	95	99	96	91	76	92	106	101	99	94
1940	99	95	97	104	120	102	85	82	103	88	86	94	97
1941	93	88	93	94	103	108	101	97	106	111	121	134	103
1942	136	132	113	121	136	130	137	144	139	165	165	170	139
1943	164	199	196	205	206	210	232	179	193	185	187	193	192
1944	176	159	146	161	180	205	197	179	188	175	178	195	176
1945	170	160	159	184	209	217	239	207	171	199	187	194	192
1946	172	168	166	171	160	173	203	169	168	160	170	162	169
1947	171	169	158	164	207	193	213	224	203	211	232	246	198
1948	236	227	198	212	241	222	207	172	236	198	187	202	211
1949	224	231	202	185	201	184	190	202	214	179	199	203	200
1950	193	174	159	173	185	182	203	187	164	174	184	214	182
1951	187	197	176	177	201	219	209	193	221	215	270	295	211
1952	259	228	229	215	244	265	298	266	246	258	260	262	251
1953	233	216	195	179	196	221	217	204	202	186	202	187	205
1954	183	163	178	180	199	215	233	183	181	217	211	200	197
1955	194	187	186	208	212	196	177	158	216	203	188	213	198
1956	214	213	222	209	227	282	315	235	201	225	229	236	236
1957	207	202	192	195	220	236	265	258	238	241	241	286	231
Fruits and Vegetables													
1938	89	88	85	90	87	89	87	92	95	94	93	104	91
1939	91	87	88	92	92	97	93	81	90	102	96	93	92
1940	92	92	96	104	112	107	95	98	99	91	90	94	98
1941	94	91	95	92	99	110	105	103	105	117	123	124	105
1942	120	119	112	119	122	138	146	144	143	151	161	165	137
1943	150	176	180	184	194	222	238	197	206	179	196	195	194
1944	166	160	154	164	173	209	200	177	175	179	178	186	176
1945	165	166	165	173	197	206	216	206	177	199	193	197	190
1946	183	191	171	176	160	178	212	178	179	174	169	161	177
1947	163	175	165	162	198	198	220	208	200	184	194	206	191
1948	193	191	181	195	207	208	211	187	211	181	177	190	195
1949	207	211	199	184	202	198	205	184	181	158	174	189	191
1950	186	182	167	174	186	198	219	199	181	172	171	196	187
1951	176	195	179	168	188	208	212	208	216	190	230	253	202
1952	232	213	216	200	229	255	273	235	228	225	228	239	232
1953	216	209	197	188	200	220	234	216	213	187	204	198	208
1954	185	165	185	182	196	206	256	215	211	222	205	199	205
1955	195	188	194	202	227	256	245	238	222	201	190	214	217
1956	203	207	213	204	238	313	326	265	220	216	220	232	243
1957	209	199	195	194	226	280	321	261	229	215	213	255	237

1/ The index of wholesale prices presented in this table were computed from prices representing private and auction sales, weighted according to the unloads of each fruit and vegetable for that month. Index numbers for the year were obtained by weighting the monthly data by the unloads for the respective months.

The following fruits and vegetables are included for the years 1935 to 1940: Apples, cantaloups, cherries, cranberries, grapefruit, grapes, honeyball melons, honeydew melons, lemons, oranges, peaches, pears, plums and prunes, strawberries, watermelon, asparagus, snap beans, broccoli, cabbage, carrots, cauliflower, celery, green corn, cucumbers, lettuce, onions, peas, peppers, potatoes, spinach, sweetpotatoes, and tomatoes. The following fruits and vegetables were added beginning 1941: Blueberries, beets, eggplant, escarole, kale, mushrooms and radishes.

END