



**AgEcon** SEARCH  
RESEARCH IN AGRICULTURAL & APPLIED ECONOMICS

*The World's Largest Open Access Agricultural & Applied Economics Digital Library*

**This document is discoverable and free to researchers across the globe due to the work of AgEcon Search.**

**Help ensure our sustainability.**

Give to AgEcon Search

AgEcon Search

<http://ageconsearch.umn.edu>

[aesearch@umn.edu](mailto:aesearch@umn.edu)

*Papers downloaded from **AgEcon Search** may be used for non-commercial purposes and personal study only. No other use, including posting to another Internet site, is permitted without permission from the copyright owner (not AgEcon Search), or as allowed under the provisions of Fair Use, U.S. Copyright Act, Title 17 U.S.C.*

*No endorsement of AgEcon Search or its fundraising activities by the author(s) of the following work or their employer(s) is intended or implied.*

SEP 1956 (1956)

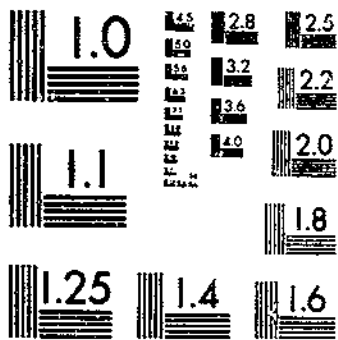
USDA STATISTICAL BULLETIN

UPDATA

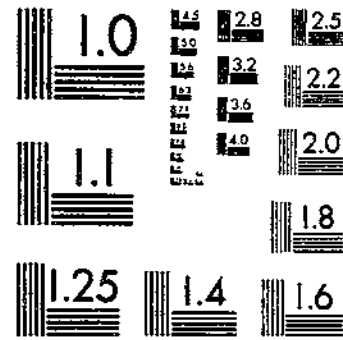
TREE NUTS BY STATES 1949-55, REVISED ESTIMATES

1 OF 1

# START



MICROCOPY RESOLUTION TEST CHART  
NATIONAL BUREAU OF STANDARDS-1963-A



MICROCOPY RESOLUTION TEST CHART  
NATIONAL BUREAU OF STANDARDS-1963-A

253-13  
#195

OFFICE  
OF STATISTICS

# TREE NUTS

BY STATES, 1949-55 • Revised Estimates

LOS ANGELES PUBLIC LIBRARY

● Production

● Use

● Value

DEC 19 1956

Statistical Bulletin No. 195

UNITED STATES DEPARTMENT OF AGRICULTURE  
 Agricultural Marketing Service • Crop Reporting Board  
 Washington D. C. October 1956

## CONTENTS

	<u>By States</u>	<u>U. S.</u>
	Page	Page
Edible Tree Nuts .....	--	2
Almonds .....	2	--
Filberts .....	5, 6	5, 6
Pecans .....	7-12	6, 12, 13
Tung Nuts .....	14	14
Walnuts .....	3, 4	3, 4

## TREE NUTS

By States, 1949-55 -- Revised Estimates, Production, Use,  
and Value

This report presents the estimates by States of production, farm disposition, value, and utilization of sales of English or Persian walnuts, almonds, filberts, pecans, and tung nuts grown in the United States during the years 1949-55. These statistics are revised on the basis of the 1954 Census of Agriculture and other pertinent data.

For the benefit of individuals who are interested primarily in the historical series for the United States, tables are included which show U. S. totals of production, farm disposition, value, and utilization of sales, 1934 through 1955. Available data by States for 1909-44 are shown in the Crop Reporting Board Bulletin entitled "Tree Nuts, Acreage, Production, Farm Disposition, Value, and Utilization of Sales, 1909-45" issued October 1947. The data for 1944-49 are shown in the Crop Reporting Board Bulletin "Tree Nuts, Production, Farm Disposition, Value and Utilization of Sales, 1944-51" issued August 1952. Values are for the crop seasons and should not be confused with calendar year income.

Production of walnuts, almonds, and filberts in commercial quantities is confined to the Pacific Coast States, while nearly all pecans come from 11 Southern and Southwestern States. Most of the English walnuts in the country are grown in California and Oregon, with California producing approximately 90 percent of the total. Almond production is limited almost exclusively to California. More than 90 percent of the U. S. filberts are grown in Oregon and most of the balance is grown in Washington.

Pecans are native to America, and more than half of the total crop comes from wild and seedling trees. Texas and Oklahoma are the leading States in the production of seedling pecans. Georgia is the principal producer of improved varieties.

Tung nuts are grown near the Gulf of Mexico in Louisiana, Mississippi, Alabama, Georgia, and Florida. These nuts are inedible and are grown only for the production of tung oil used mainly in paints and varnishes.

Table 1. - Edible Tree Nuts <sup>1/</sup>: Production, farm disposition, and value, United States, 1934-55

Season	Production 2/	Production having value 2/	Farm disposition		Value of production	Value of sales
			Home use	Sold		
	Tons	Tons	Tons	Tons	1,000 dollars	1,000 dollars
1934.....	88,396	88,396	5,812	82,584	18,474	16,989
1935.....	133,582	133,582	6,800	126,782	23,961	22,693
1936.....	88,494	88,494	5,785	82,709	22,210	20,753
1937.....	143,165	143,165	6,665	136,500	26,894	25,656
1938.....	113,302	113,302	6,390	106,912	24,497	23,186
1939.....	143,620	143,620	6,330	137,290	26,763	25,471
1940.....	130,452	130,452	6,592	123,860	28,322	26,886
1941.....	146,140	146,140	6,827	139,313	38,601	36,934
1942.....	135,657	132,607	6,086	126,521	46,505	44,428
1943.....	157,851	157,551	7,110	150,441	79,519	76,047
1944.....	181,072	180,672	7,106	173,566	89,685	86,298
1945.....	177,647	177,447	6,843	170,604	95,151	91,648
1946.....	165,662	165,662	5,312	160,350	91,774	88,378
1947.....	168,901	168,801	6,580	162,221	73,734	70,630
1948.....	202,002	201,232	7,455	193,777	68,146	66,059
1949.....	205,043	204,535	6,230	198,305	71,148	68,866
1950.....	170,885	170,005	6,201	163,804	83,233	79,876
1951.....	205,208	204,918	6,925	197,993	86,589	83,783
1952.....	207,708	207,488	6,255	201,233	87,076	84,381
1953.....	209,785	209,685	7,015	202,670	79,250	76,851
1954.....	174,520	174,070	5,260	168,810	77,509	74,843
1955.....	196,840	196,540	4,815	191,725	126,978	123,844

<sup>1/</sup> Almonds, filberts, pecans, and walnuts. <sup>2/</sup> Differences between production and production having value are quantities not harvested on account of economic conditions.

Table 2. - Almonds: Production, farm disposition, season average price received by growers, and value, California, 1934-55

Season	Production	Farm disposition		Price per ton <sup>1/</sup>	Value of production	Value of sales
		Home use	Sold			
	Tons	Tons	Tons	Dollars	1,000 dollars	1,000 dollars
1934.....	12,000	200	11,800	180	2,160	2,124
1935.....	12,700	200	12,500	280	3,556	3,500
1936.....	10,700	200	10,500	402	4,301	4,221
1937.....	24,600	200	24,400	275	6,765	6,710
1938.....	18,400	200	18,200	258	4,747	4,696
1939.....	28,700	200	28,500	209	5,998	5,956
1940.....	15,000	200	14,800	324	4,860	4,795
1941.....	9,500	200	9,300	704	6,688	6,547
1942.....	31,500	200	31,300	442	13,923	13,835
1943.....	20,500	200	20,300	732	15,006	14,860
1944.....	31,700	200	31,500	744	23,585	23,436
1945.....	32,000	200	31,800	720	23,040	22,896
1946.....	47,200	200	47,000	486	22,939	22,842
1947.....	35,700	200	35,500	558	19,921	19,809
1948.....	36,500	200	36,300	422	15,403	15,319
1949.....	43,300	200	43,100	330	14,289	14,223
1950.....	37,700	200	37,500	546	20,584	20,475
1951.....	42,700	200	42,500	472	20,154	20,060
1952.....	36,400	200	36,200	464	16,890	16,797
1953.....	38,600	200	38,400	476	18,374	18,278
1954.....	43,200	200	43,000	498	21,514	21,414
1955.....	38,300	200	38,100	861	32,976	32,804

<sup>1/</sup> For all methods of sale.

Table 3. - Walnuts: Production, farm disposition, season average price received by growers, and value, California and Oregon, 1949-55, and United States, 1934-55

State and season	Production 1/	Production having value 1/	Farm disposition		Price per ton 2/	Value of production	Value of sales
			Home use	Sold			
	Tons	Tons	Tons	Tons	Dollars	1,000 dollars	1,000 dollars
<b>California:</b>							
1949.....	80,200	80,200	400	79,800	363	29,113	28,967
1950.....	58,000	58,000	400	57,600	392	22,736	22,579
1951.....	68,300	68,300	400	67,900	440	30,052	29,876
1952.....	75,600	75,600	400	75,200	400	30,240	30,080
1953.....	54,800	54,800	400	54,400	415	22,742	22,576
1954.....	67,000	67,000	400	66,600	360	24,120	23,976
1955.....	72,000	72,000	400	71,600	555	39,960	39,738
<b>Oregon:</b>							
1949.....	7,900	7,500	500	7,100	220	1,672	1,562
1950.....	6,300	6,200	400	5,800	320	1,984	1,856
1951.....	9,100	9,100	500	8,600	340	3,094	2,924
1952.....	8,200	8,200	500	7,700	360	2,952	2,772
1953.....	4,400	4,400	350	4,050	370	1,628	1,498
1954.....	8,400	8,100	450	7,650	260	2,106	1,989
1955.....	5,400	5,100	400	4,700	500	2,550	2,350
<b>United States:</b>							
1934.....	47,100	47,100	700	46,400	191	9,003	8,853
1935.....	57,400	57,400	750	56,650	203	11,656	11,495
1936.....	45,800	45,800	600	45,200	217	9,955	9,818
1937.....	62,400	62,400	700	61,700	181	11,284	11,152
1938.....	55,300	55,300	850	54,450	221	12,232	12,047
1939.....	62,500	62,500	840	61,660	168	10,510	10,368
1940.....	50,800	50,800	830	49,970	230	11,691	11,512
1941.....	70,000	70,000	860	69,140	252	17,619	17,408
1942.....	61,200	58,250	770	57,480	307	17,872	17,643
1943.....	63,800	63,600	850	62,750	478	30,398	30,015
1944.....	71,800	71,300	900	70,600	446	31,915	31,512
1945.....	70,900	70,700	900	69,800	509	35,978	35,542
1946.....	71,900	71,900	900	71,000	555	39,826	39,378
1947.....	64,600	64,500	900	63,600	382	24,597	24,287
1948.....	71,100	70,650	950	69,700	419	29,480	29,171
1949.....	88,100	87,800	900	86,900	351	30,785	30,529
1950.....	64,300	64,200	800	63,400	385	24,720	24,435
1951.....	77,400	77,400	900	76,500	429	33,146	32,800
1952.....	83,800	83,800	900	82,900	396	33,192	32,852
1953.....	59,200	59,200	750	58,450	412	24,370	24,074
1954.....	75,400	75,100	850	74,250	350	26,226	25,965
1955.....	77,400	77,100	800	76,300	552	42,510	42,088

1/ Differences between production and production having value are quantities not harvested on account of economic conditions.

2/ Equivalent returns for bulk nuts at first delivery point. United States prices computed by weighting State prices by quantities sold.



Table 4. - Walnuts: Utilization of sales (unshelled basis) and production of shelled meats, California and Oregon, 1949-55, and United States, 1939-55

State and season	Total sales	Merchantable unshelled grades			Culls and blow			Orchard run		Local sales	Total shelled	Shelled meats produced
		Sold in the shell	Shelled	To oil mills	Shelled	To oil mills	Not used	Direct to shellers	To oil mills			
	Tons	Tons	Tons	Tons	Tons	Tons	Tons	Tons	Tons	Tons	Tons	Pounds
<b>California:</b>												
1949.....	79,800	42,380	13,630	2,590	1,520	8,880	---	9,000	1,700	100	24,150	18,990,000
1950.....	57,600	35,480	4,920	---	7,700	---	---	9,400	---	100	22,020	16,070,000
1951.....	67,900	43,200	7,800	---	7,900	---	---	8,900	---	100	24,600	18,090,000
1952.....	75,200	37,090	16,380	2,530	6,100	3,200	---	9,800	---	100	32,280	23,600,000
1953.....	54,400	31,400	7,500	---	6,700	---	---	8,700	---	100	22,900	16,170,000
1954.....	66,600	39,200	8,600	---	7,100	500	---	11,100	---	100	26,800	18,480,000
1955.....	71,600	36,500	1/	1/	1/	1/	1/	1/	1/	100	35,000	26,860,000
<b>Oregon: 3/</b>												
1949.....	7,250	3,100	1,400	120	700	410	100	1,050	70	300	3,150	1,993,000
1950.....	5,850	2,600	400	---	550	---	50	2,000	---	250	2,950	2,034,000
1951.....	8,700	4,500	1,100	---	1,200	---	100	1,500	---	300	3,800	2,558,000
1952.....	7,700	3,850	1,350	---	600	---	75	1,550	---	275	3,500	2,514,000
1953.....	4,050	2,040	610	---	390	---	50	760	---	200	1,760	1,230,000
1954.....	7,650	1,870	830	---	820	70	10	4,000	---	250	5,650	3,632,000
1955.....	4,700	900	220	---	420	---	10	2,950	---	200	3,590	2,374,000
<b>United States 2/ 3/</b>												
1939.....	61,720	31,190	13,560	---	11,100	---	---	5,590	---	280	30,250	20,026,000
1940.....	50,020	30,640	6,710	---	6,800	---	---	5,590	---	280	19,100	13,719,000
1941.....	69,210	33,580	17,020	---	10,610	---	40	7,660	---	300	35,290	26,857,000
1942.....	57,485	39,520	3,960	---	8,785	---	105	4,835	---	280	17,580	11,814,000
1943.....	62,800	41,170	3,330	---	9,700	---	25	8,275	---	300	21,305	14,270,000
1944.....	70,630	43,400	2,410	---	13,520	250	20	10,730	---	300	26,660	17,070,000
1945.....	69,900	48,180	3,380	---	8,075	---	60	9,905	---	300	21,360	15,695,000
1946.....	71,150	46,880	3,820	---	9,200	---	200	10,650	---	400	23,670	16,892,000
1947.....	63,650	37,020	9,005	---	10,050	---	325	6,950	---	300	26,005	18,958,000
1948.....	69,800	44,330	4,570	---	11,400	---	100	9,000	---	400	24,970	16,138,000
1949.....	87,050	45,480	15,030	2,710	2,220	9,290	100	10,050	1,770	400	27,300	20,983,000
1950.....	63,450	38,080	5,320	---	8,250	---	50	11,400	---	350	24,970	18,104,000
1951.....	76,600	47,700	8,900	---	9,100	---	100	10,400	---	400	28,400	20,648,000
1952.....	82,900	40,940	17,730	2,530	6,700	3,200	75	11,350	---	375	35,780	26,114,000
1953.....	58,450	33,440	8,110	---	7,090	---	50	9,460	---	300	24,660	17,400,000
1954.....	74,250	40,870	9,430	---	7,920	570	10	15,100	---	350	32,450	22,112,000
1955.....	76,300	37,400	1/	1/	1/	1/	1/	1/	1/	300	38,590	29,234,000

1/ Not available.

2/ Data not available prior to 1939.

3/ Includes the following quantities of Washington Walnuts shipped into Oregon, which are not included in Oregon production or farm disposition shown in Table 3: (tons) 1939, 60; 1940, 50; 1941, 70; 1942, 5; 1943, 50; 1944, 30; 1945, 100; 1946, 150; 1947, 50; 1948, 100; 1949, 150; 1950, 50; 1951, 100.

Table 5. - Filberts: Production, farm disposition, season average price received by growers, and value, Oregon and Washington, 1949-55, and United States, 1934-55

State and season	Production 1/	Production having value 1/	Farm disposition		Price per ton 2/	Value of production	Value of sales
			Home use	Sold			
	Tons	Tons	Tons	Tons	Dollars	1,000 dollars	1,000 dollars
<b>Oregon:</b>							
1949.....	9,700	9,600	250	9,350	220	2,112	2,057
1950.....	6,000	5,350	240	5,110	350	1,872	1,788
1951.....	6,100	5,850	250	5,600	350	2,048	1,960
1952.....	11,000	10,780	280	10,500	296	3,191	3,108
1953.....	4,300	4,200	200	4,000	344	1,445	1,376
1954.....	8,000	7,850	250	7,600	320	2,512	2,432
1955.....	7,400	7,400	250	7,150	420	3,108	3,003
<b>Washington:</b>							
1949.....	1,100	990	100	890	210	208	187
1950.....	570	440	100	340	354	156	120
1951.....	640	600	95	505	357	214	180
1952.....	790	790	95	695	330	261	229
1953.....	600	600	90	510	345	207	176
1954.....	620	620	90	530	322	200	171
1955.....	310	310	75	235	422	131	99
<b>United States:</b>							
1934.....	1,210	1,210	60	1,150	202	244	232
1935.....	1,240	1,240	85	1,155	263	326	304
1936.....	2,100	2,100	100	2,000	270	568	540
1937.....	2,570	2,570	120	2,450	217	557	531
1938.....	2,440	2,440	140	2,300	225	548	516
1939.....	3,890	3,890	160	3,730	226	861	844
1940.....	3,210	3,210	160	3,050	250	801	760
1941.....	5,750	5,750	180	5,570	306	1,759	1,703
1942.....	4,270	4,170	190	3,980	352	1,466	1,398
1943.....	7,030	6,930	270	6,660	499	3,457	3,322
1944.....	6,520	6,420	220	6,200	540	3,467	3,348
1945.....	5,320	5,320	250	5,070	551	2,933	2,795
1946.....	8,450	8,450	280	8,170	384	3,243	3,135
1947.....	8,800	8,800	330	8,470	252	2,235	2,132
1948.....	6,380	6,060	360	5,700	259	1,566	1,474
1949.....	10,800	10,590	350	10,240	219	2,320	2,244
1950.....	6,570	5,790	340	5,450	350	2,028	1,908
1951.....	6,740	6,450	345	6,105	351	2,266	2,140
1952.....	11,790	11,570	375	11,195	298	3,452	3,337
1953.....	4,900	4,800	290	4,510	344	1,652	1,552
1954.....	8,620	8,470	340	8,130	320	2,712	2,603
1955.....	7,710	7,710	325	7,385	420	3,239	3,102

1/ Differences between production and production having value are quantities not harvested on account of economic conditions.

2/ Equivalent returns for bulk nuts at first delivery point. United States prices computed by weighting State prices by quantities sold.

Table 6. - Filberts: Utilization of sales (unshelled basis) and production of shelled meats, Oregon and Washington, 1949-55, and United States, 1944-55

State and season	Total sales	Merchantable unshelled grades		Culls and blows		Orchard-rum shelled	Local sales	Total shelled	Shelled meats produced
		Sold in the shell	Shelled	Shelled	Not used				
	Tons	Tons	Tons	Tons	Tons	Tons	Tons	Tons	Pounds
<b>Oregon:</b>									
1949.....	9,350	5,110	2,780	370	410	480	200	3,630	2,771,000
1950.....	5,110	4,010	10	310	130	470	180	790	582,000
1951.....	5,600	4,720	20	320	130	210	200	550	391,000
1952.....	10,500	6,600	2,330	1,050	170	100	250	3,480	2,478,000
1953.....	4,000	3,100	45	250	245	210	150	505	339,000
1954.....	7,600	5,600	800	380	250	370	200	1,550	1,159,000
1955.....	7,150	5,435	175	395	145	750	250	1,320	885,000
<b>Washington:</b>									
1949.....	890	440	280	30	40	50	50	360	274,000
1950.....	340	255	---	20	10	30	25	50	37,000
1951.....	505	415	---	30	10	20	30	50	35,000
1952.....	695	405	150	100	15	---	25	250	195,000
1953.....	510	370	10	15	30	5	80	30	19,000
1954.....	530	390	30	25	20	5	60	60	22,000
1955.....	235	186	9	11	3	16	10	36	22,000
<b>United States 1/:</b>									
1944.....	6,200	4,990	60	110	195	520	325	690	513,000
1945.....	5,070	4,080	10	110	330	250	290	370	267,000
1946.....	8,170	6,190	730	70	410	390	380	1,190	932,000
1947.....	8,470	4,220	2,010	200	270	1,430	340	3,640	2,945,000
1948.....	5,700	4,320	110	350	155	405	360	865	604,000
1949.....	10,240	5,550	3,060	400	450	530	250	3,990	3,045,000
1950.....	5,450	4,265	10	330	140	500	205	840	619,000
1951.....	6,105	5,135	20	350	140	230	230	600	426,000
1952.....	11,195	7,005	2,480	1,150	185	100	275	3,730	2,943,000
1953.....	4,510	3,470	55	265	275	215	230	535	358,000
1954.....	8,130	5,990	830	405	270	375	260	1,610	1,181,000
1955.....	7,385	5,521	184	406	148	766	260	1,356	907,000

1/ Data not available prior to 1944.

Table 7. - Pecans: Quantity shelled commercially and quantity marketed in the shell, 11 principal producing States, 1948-55 1/

(Unshelled basis)

Season	Quantity shelled commercially	Quantity marketed in shell	Total sales
	1,000 pounds	1,000 pounds	1,000 pounds
1948.....	134,500	29,653	164,153
1949.....	100,350	15,780	116,130
1950.....	93,740	21,166	114,908
1951.....	114,790	30,985	145,775
1952.....	118,420	23,456	141,876
1953.....	170,450	32,170	202,620
1954.....	74,220	12,640	86,860
1955.....	121,400	18,480	139,880

1/ Data not available prior to 1948.

Table 8. - Pecans: Production, farm disposition, season average price received by growers, and value, by States, 1949-55, United States, 1934-55

State, variety, and season	Production 1,000 pounds	Farm disposition		Price per pound 1/ Cents	Value of production 1,000 dollars	Value of sales 1,000 dollars
		Home use 1,000 pounds	Sold 1,000 pounds			
<b>North Carolina</b>						
<u>All pecans:</u>						
1949.....	2,505	780	1,725	24.6	612	424
1950.....	1,640	650	990	30.6	497	303
1951.....	2,435	780	1,655	24.5	595	406
1952.....	2,546	780	1,766	24.7	626	437
1953.....	3,780	780	3,000	20.1	758	604
1954.....	1,000	550	450	29.1	289	131
1955.....	350	240	110	42.7	148	47
<u>Improved varieties:</u>						
1949.....	2,255	660	1,595	25.0	564	399
1950.....	1,492	550	942	31.0	463	292
1951.....	2,190	660	1,530	25.0	548	382
1952.....	2,340	670	1,670	25.0	585	418
1953.....	3,175	625	2,550	21.0	667	536
1954.....	860	460	400	30.0	258	120
1955.....	300	200	100	44.0	132	44
<u>Wild or seedling pecans:</u>						
1949.....	250	120	130	19.0	48	25
1950.....	148	100	48	23.0	34	11
1951.....	245	120	125	19.0	47	24
1952.....	206	110	96	20.0	41	19
1953.....	605	155	450	15.0	91	68
1954.....	140	90	50	22.0	31	11
1955.....	50	40	10	33.0	16	3
<b>South Carolina</b>						
<u>All pecans:</u>						
1949.....	2,740	430	2,310	20.8	569	480
1950.....	3,000	430	2,570	30.5	913	783
1951.....	4,330	450	3,880	24.0	1,040	932
1952.....	3,600	450	3,150	24.0	864	757
1953.....	6,680	480	6,200	18.0	1,200	1,115
1954.....	2,700	350	2,350	29.8	805	701
1955.....	200	50	150	42.7	85	64
<u>Improved varieties:</u>						
1949.....	2,350	370	1,980	21.5	505	426
1950.....	2,550	360	2,190	31.5	803	690
1951.....	3,680	380	3,300	25.0	920	825
1952.....	3,050	380	2,670	25.0	762	668
1953.....	5,580	380	5,200	18.8	1,049	978
1954.....	2,300	290	2,010	31.0	713	623
1955.....	140	40	100	46.0	64	46
<u>Wild or seedling pecans:</u>						
1949.....	390	60	330	16.5	64	54
1950.....	450	70	380	24.5	110	93
1951.....	650	70	580	18.5	120	107
1952.....	550	70	480	18.5	102	89
1953.....	1,100	100	1,000	13.7	151	137
1954.....	400	60	340	23.0	92	78
1955.....	60	20	50	35.0	21	18

1/ For all methods of sale. Prices for "all pecans" computed by weighting prices for improved and seedling pecans by quantities sold.

Table 8. - Pecans: Production, farm disposition, season average price received by growers, and value, by States, 1949-55, United States, 1934-55--Continued

State, variety, and season	Production 1,000 pounds	Farm disposition		Price per pound <sup>1/</sup>	Value of production 1,000 dollars	Value of sales 1,000 dollars
		Home use 1,000 pounds	Sold 1,000 pounds			
<b>Georgia</b>						
<u>All pecans:</u>						
1949.....	17,000	1,200	15,800	20.8	3,536	3,293
1950.....	41,000	2,500	38,500	30.6	12,555	11,797
1951.....	51,500	2,500	49,000	20.4	10,520	10,012
1952.....	50,500	2,500	48,000	23.8	12,008	11,415
1953.....	56,600	2,600	54,000	16.9	9,552	9,116
1954.....	20,000	1,200	18,800	30.8	6,148	5,785
1955.....	10,000	300	9,700	40.0	4,000	3,884
<u>Improved varieties:</u>						
1949.....	14,620	900	13,720	21.5	3,143	2,950
1950.....	35,000	2,000	33,000	31.5	11,025	10,395
1951.....	42,300	2,000	40,300	21.5	9,094	8,664
1952.....	41,000	2,000	39,000	25.0	10,250	9,750
1953.....	46,500	2,050	44,450	17.5	8,138	7,779
1954.....	16,400	900	15,500	32.0	5,248	4,960
1955.....	8,000	200	7,800	42.0	3,360	3,276
<u>Wild or seedling pecans:</u>						
1949.....	2,380	300	2,080	16.5	393	343
1950.....	6,000	500	5,500	25.5	1,530	1,402
1951.....	9,200	500	8,700	15.5	1,426	1,348
1952.....	9,500	500	9,000	18.5	1,758	1,665
1953.....	10,100	550	9,550	14.0	1,414	1,337
1954.....	3,600	300	3,300	25.0	900	825
1955.....	2,000	100	1,900	32.0	640	608
<b>Florida</b>						
<u>All pecans:</u>						
1949.....	3,130	520	2,610	17.9	559	466
1950.....	4,150	550	3,600	27.5	1,141	990
1951.....	5,280	550	4,730	18.3	964	866
1952.....	4,300	550	3,750	21.0	900	787
1953.....	7,300	600	6,700	14.7	1,069	982
1954.....	2,560	450	2,110	30.2	775	637
1955.....	10,900	600	10,300	37.9	4,128	3,906
<u>Improved varieties:</u>						
1949.....	1,790	290	1,500	19.5	349	292
1950.....	2,350	310	2,040	29.0	682	592
1951.....	3,440	310	3,130	20.0	688	626
1952.....	2,800	310	2,490	22.5	630	560
1953.....	4,000	300	3,700	16.0	640	592
1954.....	1,500	275	1,225	34.0	510	416
1955.....	6,400	300	6,100	42.0	2,688	2,562
<u>Wild or seedling pecans:</u>						
1949.....	1,340	230	1,110	15.7	210	174
1950.....	1,800	240	1,560	25.5	459	398
1951.....	1,840	240	1,600	15.0	276	240
1952.....	1,500	240	1,260	18.0	270	227
1953.....	3,300	300	3,000	13.0	429	390
1954.....	1,060	175	885	25.0	265	221
1955.....	4,500	300	4,200	32.0	1,440	1,344

<sup>1/</sup> For all methods of sale. Prices for "all pecans" computed by weighting prices for improved and seedling pecans by quantities sold.

Table 8. - Pecans: Production, farm disposition, season average price received by growers, and value, by States, 1949-55, United States, 1953-55--Continued

State, variety and season	Production 1,000 pounds	Farm disposition		Price per pound 1/ Cents	Value of production 1,000 dollars	Value of sales 1,000 dollars
		Home use 1,000 pounds	Sold 1,000 pounds			
<b>Alabama</b>						
<b>All pecans:</b>						
1949.....	14,025	1,200	12,825	19.2	2,589	2,463
1950.....	11,700	900	10,800	29.7	3,473	3,210
1951.....	26,000	1,450	24,550	19.1	4,965	4,692
1952.....	14,400	900	13,500	23.4	3,366	3,160
1953.....	30,000	1,400	28,600	15.4	4,620	4,408
1954.....	8,000	800	7,200	32.5	2,592	2,338
1955.....	8,000	800	7,200	41.8	3,332	3,006
<b>Improved varieties:</b>						
1949.....	11,500	900	10,600	20.0	2,300	2,120
1950.....	9,800	700	9,100	30.5	2,989	2,776
1951.....	21,300	1,100	20,200	20.0	4,260	4,040
1952.....	11,700	650	11,050	24.5	2,866	2,707
1953.....	24,000	1,000	23,000	16.0	3,840	3,680
1954.....	6,500	600	5,900	34.0	2,210	2,006
1955.....	6,800	600	6,200	43.0	2,924	2,666
<b>Wild or seedling pecans:</b>						
1949.....	2,525	300	2,225	15.4	389	343
1950.....	1,900	200	1,700	25.5	484	434
1951.....	4,700	350	4,350	15.0	705	652
1952.....	2,700	250	2,450	18.5	500	453
1953.....	6,000	400	5,600	13.0	780	728
1954.....	1,500	200	1,300	25.5	382	332
1955.....	1,200	200	1,000	34.0	408	340
<b>Mississippi</b>						
<b>All pecans:</b>						
1949.....	10,000	1,400	8,600	17.6	1,775	1,515
1950.....	3,700	1,112	2,588	27.6	1,044	713
1951.....	13,600	1,500	12,100	17.4	2,390	2,110
1952.....	6,000	840	5,160	20.9	1,264	1,078
1953.....	17,050	1,500	15,550	15.0	2,563	2,328
1954.....	5,000	800	4,200	26.6	1,342	1,118
1955.....	10,000	900	9,100	32.7	3,305	2,979
<b>Improved varieties:</b>						
1949.....	5,500	1,000	4,500	20.0	1,100	900
1950.....	1,706	762	944	32.0	546	302
1951.....	7,000	1,100	5,900	20.0	1,400	1,180
1952.....	2,800	540	2,260	24.0	672	542
1953.....	7,050	1,000	6,050	16.5	1,163	998
1954.....	2,400	500	1,900	31.0	744	589
1955.....	4,500	720	3,780	38.0	1,710	1,436
<b>Wild or seedling pecans:</b>						
1949.....	4,500	400	4,100	15.0	675	615
1950.....	1,994	350	1,644	25.0	498	411
1951.....	6,600	400	6,200	15.0	990	930
1952.....	3,200	300	2,900	18.5	592	536
1953.....	10,000	500	9,500	14.0	1,400	1,330
1954.....	2,600	300	2,300	23.0	598	529
1955.....	5,500	180	5,320	29.0	1,595	1,543

1/ For all methods of sale. Prices for "all pecans" computed by weighting prices for improved and seedling pecans by quantities sold.

Table 8. - Pecans: Production, farm disposition, season average price received by growers, and value, by States, 1949-55, United States, 1934-55--Continued

State, variety, and season	Production 1,000 pounds	Farm disposition		Price per pound 1/ Cents	Value of production 1,000 dollars	Value of sales 1,000 dollars
		Home use 1,000 pounds	Sold 1,000 pounds			
<b>Arkansas</b>						
<u>All pecans:</u>						
1949.....	4,900	600	4,300	18.5	908	794
1950.....	2,450	550	1,900	25.9	640	492
1951.....	5,350	600	4,750	18.7	1,003	888
1952.....	2,900	550	2,350	21.2	614	498
1953.....	10,650	650	10,000	15.4	1,638	1,535
1954.....	2,550	500	2,050	25.2	643	517
1955.....	7,950	650	7,300	32.0	2,547	2,334
<u>Improved varieties:</u>						
1949.....	650	150	500	22.0	143	110
1950.....	400	150	250	32.0	128	80
1951.....	800	150	650	23.0	184	150
1952.....	850	150	700	24.0	204	168
1953.....	1,600	200	1,400	17.5	280	245
1954.....	700	125	575	31.0	217	178
1955.....	1,800	200	1,600	39.0	702	624
<u>Wild or seedling pecans:</u>						
1949.....	4,250	450	3,800	18.0	765	684
1950.....	2,050	400	1,650	25.0	512	412
1951.....	4,550	450	4,100	18.0	819	738
1952.....	2,050	400	1,650	20.0	410	330
1953.....	9,050	450	8,600	15.0	1,358	1,290
1954.....	1,850	375	1,475	23.0	426	339
1955.....	6,150	450	5,700	30.0	1,845	1,710
<b>Louisiana</b>						
<u>All pecans:</u>						
1949.....	17,000	1,000	16,000	17.1	2,918	2,740
1950.....	9,100	900	8,200	26.4	2,408	2,162
1951.....	15,700	1,000	14,700	19.3	3,033	2,832
1952.....	13,500	900	12,600	20.0	2,706	2,519
1953.....	24,000	1,000	23,000	15.7	3,780	3,619
1954.....	10,500	750	9,750	25.9	2,714	2,523
1955.....	25,000	900	24,100	29.4	7,370	7,097
<u>Improved varieties:</u>						
1949.....	3,950	350	3,600	21.0	830	756
1950.....	1,900	300	1,600	32.0	608	512
1951.....	3,450	350	3,100	24.0	828	744
1952.....	3,200	300	2,900	25.0	800	725
1953.....	6,000	350	5,650	18.0	1,080	1,017
1954.....	3,750	250	3,500	31.0	1,162	1,085
1955.....	2,000	200	1,800	35.0	700	630
<u>Wild or seedling pecans:</u>						
1949.....	13,050	650	12,400	16.0	2,088	1,984
1950.....	7,200	600	6,600	25.0	1,800	1,650
1951.....	12,250	650	11,600	18.0	2,205	2,088
1952.....	10,300	600	9,700	18.5	1,906	1,794
1953.....	18,000	650	17,350	15.0	2,700	2,602
1954.....	6,750	500	6,250	23.0	1,552	1,438
1955.....	23,000	700	22,300	29.0	6,670	6,467

1/ For all methods of sale. Prices for "all pecans" computed by weighting prices for improved and seedling pecans by quantities sold.

Table 8. - Pecans: Production, farm disposition, season average price received by growers, and value, by States, 1949-55, United States 1934-55--Continued

State, variety, and season	Production 1,000 pounds	Farm disposition		Price per pound 1/ Cents	Value of production 1,000 dollars	Value of sales 1,000 dollars
		Home use 1,000 pounds	Sold 1,000 pounds			
<b>Oklahoma</b>						
<b>All pecans:</b>						
1949.....	24,000	600	23,400	18.7	4,504	4,378
1950.....	7,000	300	6,700	26.9	1,895	1,805
1951.....	25,000	600	24,400	18.6	4,665	4,546
1952.....	3,000	150	2,850	19.7	594	562
1953.....	27,600	600	27,000	15.5	4,286	4,187
1954.....	14,500	500	14,000	27.2	3,955	3,815
1955.....	33,000	1,000	32,000	30.3	10,032	9,710
<b>Improved varieties:</b>						
1949.....	2,040	200	1,840	27.0	551	497
1950.....	630	100	530	38.0	239	201
1951.....	1,500	100	1,400	29.0	435	406
1952.....	340	40	300	30.0	102	90
1953.....	1,600	100	1,500	24.1	386	362
1954.....	1,500	100	1,400	34.0	510	476
1955.....	3,300	300	3,000	38.5	1,270	1,155
<b>Wild or seedling pecans:</b>						
1949.....	21,960	400	21,560	18.0	3,953	3,881
1950.....	6,370	200	6,170	26.0	1,656	1,604
1951.....	23,500	500	23,000	18.0	4,230	4,140
1952.....	2,660	110	2,550	18.5	492	472
1953.....	26,000	500	25,500	15.0	3,900	3,825
1954.....	13,000	400	12,600	26.5	3,445	3,339
1955.....	29,700	700	29,000	29.5	8,762	8,555
<b>Texas</b>						
<b>All pecans:</b>						
1949.....	29,000	1,800	27,200	18.3	5,336	4,977
1950.....	39,000	1,800	37,200	27.3	10,673	10,152
1951.....	5,700	1,500	4,200	22.8	1,300	956
1952.....	47,200	1,900	45,300	20.6	9,728	9,320
1953.....	28,000	1,900	26,100	17.0	4,760	4,435
1954.....	24,000	1,800	22,200	27.0	6,468	5,984
1955.....	38,000	1,500	36,500	31.4	11,922	11,455
<b>Improved varieties:</b>						
1949.....	4,060	530	3,530	27.0	1,096	953
1950.....	5,070	500	4,570	36.5	1,851	1,668
1951.....	1,100	300	800	34.5	380	276
1952.....	8,000	500	7,500	28.5	2,280	2,138
1953.....	4,200	300	3,900	25.5	1,071	994
1954.....	4,100	300	3,800	34.0	1,394	1,292
1955.....	5,700	200	5,500	42.0	2,394	2,310
<b>Wild or seedling pecans:</b>						
1949.....	24,940	1,270	23,670	17.0	4,240	4,024
1950.....	33,930	1,300	32,630	26.0	8,822	8,484
1951.....	4,600	1,200	3,400	20.0	920	630
1952.....	39,200	1,400	37,800	19.0	7,448	7,182
1953.....	23,800	1,600	22,200	15.5	3,689	3,441
1954.....	19,900	1,500	18,400	25.5	5,074	4,692
1955.....	32,300	1,300	31,000	29.5	9,528	9,145

1/ For all methods of sale. Prices for "all pecans" computed by weighting prices for improved and seedling pecans by quantities sold.



Table 8. - Pecans: Production, farm disposition, season average price received by growers, and value, by States, 1949-55, United States, 1934-55--Continued

State, variety and season	Production 1,000 pounds	Farm disposition		Price per pound 1/ Cents	Value of production 1,000 dollars	Value of sales 1,000 dollars
		Home use 1,000 pounds	Sold 1,000 pounds			
<b>New Mexico</b>						
<u>Improved varieties:</u>						
1949.....	1,390	30	1,360	25.0	348	340
1950.....	1,890	30	1,860	35.0	662	651
1951.....	1,840	30	1,810	30.0	552	543
1952.....	3,490	40	3,450	25.0	872	862
1953.....	2,510	40	2,470	25.0	628	618
1954.....	3,790	40	3,750	35.0	1,326	1,312
1955.....	3,460	40	3,420	40.0	1,384	1,368
<b>United States</b>						
<u>All pecans:</u>						
1934.....	56,172	9,705	46,467	12.6	7,067	5,780
1935.....	124,485	11,530	112,955	6.8	8,423	7,394
1936.....	59,787	9,770	50,017	12.4	7,385	6,174
1937.....	107,190	11,290	95,900	7.7	8,288	7,263
1938.....	74,323	10,400	63,923	9.4	6,970	5,927
1939.....	97,060	10,260	86,800	9.7	9,374	8,303
1940.....	122,884	10,804	112,080	8.9	10,970	9,819
1941.....	121,781	11,174	110,607	10.3	12,535	11,276
1942.....	77,374	9,851	67,523	17.1	13,244	11,552
1943.....	133,042	11,581	121,461	23.0	30,658	27,850
1944.....	142,104	11,572	130,532	21.5	30,718	28,002
1945.....	138,854	10,985	127,868	23.8	33,200	30,415
1946.....	76,225	7,865	68,360	33.7	25,766	23,023
1947.....	119,602	10,300	109,302	22.3	27,001	24,402
1948.....	176,043	11,890	164,153	12.2	21,697	20,095
1949.....	125,690	9,560	116,130	18.8	23,754	21,870
1950.....	124,630	9,722	114,908	28.8	35,901	33,058
1951.....	156,735	10,960	145,775	19.7	31,027	28,783
1952.....	151,436	9,560	141,876	22.1	33,542	31,395
1953.....	214,170	11,550	202,620	16.3	34,854	32,947
1954.....	94,600	7,740	86,860	28.6	27,057	24,861
1955.....	146,860	6,980	139,880	32.8	48,253	45,850

1/ For all methods of sale. United States prices computed by weighting State prices by quantities sold.

Table 8. - Pecans: Production, farm disposition, season average price received by growers, and value, by States, 1949-55, United States, 1934-55--Continued

State, variety and season	Production	Farm disposition		Price per pound 1/	Value of production	Value of sales
		Home use	Sold			
	1,000 pounds	1,000 pounds	1,000 pounds	Cents	1,000 dollars	1,000 dollars
<b>United States (Cont.)</b>						
<b>Improved varieties:</b>						
1934.....	19,468	2/	2/	2/	2/	2/
1935.....	29,464	2/	2/	2/	2/	2/
1936.....	32,257	2/	2/	2/	2/	2/
1937.....	40,026	6,228	33,798	2/	2/	2/
1938.....	35,291	5,712	29,579	2/	2/	2/
1939.....	40,944	5,725	35,219	2/	2/	2/
1940.....	42,126	6,061	36,065	2/	2/	2/
1941.....	51,452	6,418	45,034	2/	2/	2/
1942.....	45,383	5,886	39,497	2/	2/	2/
1943.....	57,173	6,571	50,602	2/	2/	2/
1944.....	61,188	6,451	54,737	27.7	16,986	15,172
1945.....	59,236	6,365	52,871	29.2	17,261	15,416
1946.....	33,492	4,317	29,175	40.2	13,436	11,733
1947.....	45,193	5,660	39,533	29.4	13,311	11,616
1948.....	77,532	6,895	70,637	15.2	11,843	10,738
1949.....	50,105	5,380	44,725	21.8	10,929	9,743
1950.....	62,788	5,762	57,026	31.8	19,996	18,159
1951.....	88,600	6,480	82,120	21.7	19,289	17,836
1952.....	79,570	5,580	73,990	25.2	20,023	18,628
1953.....	106,215	6,345	99,870	17.8	18,942	17,799
1954.....	43,800	3,840	39,960	32.7	14,292	13,057
1955.....	42,400	3,000	39,400	40.9	17,328	16,117
<b>Wild or seedling pecans:</b>						
1934.....	36,704	2/	2/	2/	2/	2/
1935.....	95,021	2/	2/	2/	2/	2/
1936.....	27,530	2/	2/	2/	2/	2/
1937.....	67,164	5,062	62,102	2/	2/	2/
1938.....	39,032	4,688	34,344	2/	2/	2/
1939.....	56,116	4,535	51,581	2/	2/	2/
1940.....	80,758	4,743	76,015	2/	2/	2/
1941.....	70,329	4,756	65,573	2/	2/	2/
1942.....	31,991	3,965	28,026	2/	2/	2/
1943.....	75,869	5,010	70,859	2/	2/	2/
1944.....	80,916	5,121	75,795	16.9	13,732	12,830
1945.....	79,618	4,621	74,997	20.0	15,939	14,999
1946.....	42,733	3,548	39,185	28.8	12,330	11,290
1947.....	74,409	4,640	69,769	18.3	13,690	12,786
1948.....	98,511	4,995	93,516	10.0	9,854	9,357
1949.....	75,585	4,180	71,405	17.0	12,825	12,127
1950.....	61,842	3,960	57,882	25.7	15,905	14,899
1951.....	68,135	4,480	63,655	17.2	11,738	10,947
1952.....	71,866	3,980	67,886	18.8	13,519	12,767
1953.....	107,955	5,205	102,750	14.7	15,912	15,148
1954.....	50,800	3,900	46,900	25.2	12,765	11,804
1955.....	104,460	3,980	100,480	29.6	30,925	29,733

1/ For all methods of sale. United States prices computed by weighting State prices by quantities sold.

2/ Not available.

END