



**AgEcon** SEARCH

RESEARCH IN AGRICULTURAL & APPLIED ECONOMICS

*The World's Largest Open Access Agricultural & Applied Economics Digital Library*

**This document is discoverable and free to researchers across the globe due to the work of AgEcon Search.**

**Help ensure our sustainability.**

Give to AgEcon Search

AgEcon Search

<http://ageconsearch.umn.edu>

[aesearch@umn.edu](mailto:aesearch@umn.edu)

*Papers downloaded from **AgEcon Search** may be used for non-commercial purposes and personal study only. No other use, including posting to another Internet site, is permitted without permission from the copyright owner (not AgEcon Search), or as allowed under the provisions of Fair Use, U.S. Copyright Act, Title 17 U.S.C.*

*No endorsement of AgEcon Search or its fundraising activities by the author(s) of the following work or their employer(s) is intended or implied.*

SP. 172 (1956)

USDA STATISTICAL BULLETINS

UP DATA

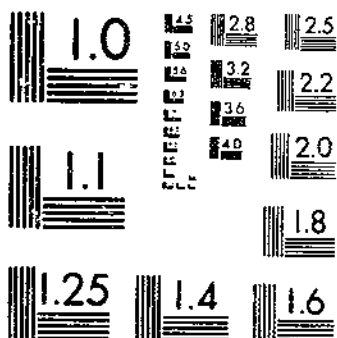
FRESH FRUIT AND VEGETABLE PRICES

1955

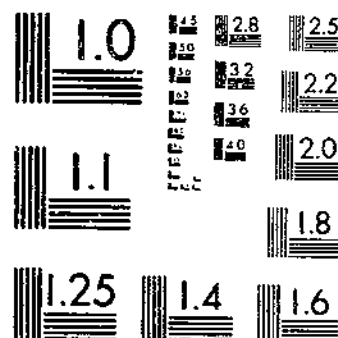
HEFLIN, L. G.

1 OF 1

# START



MICROCOPY RESOLUTION TEST CHART  
NATIONAL BUREAU OF STANDARDS-1963-A



MICROCOPY RESOLUTION TEST CHART  
NATIONAL BUREAU OF STANDARDS-1963-A

REFERENCE  
DC-10000

# FRESH FRUIT and VEGETABLE PRICES • 1955



WHOLESALE

CHICAGO AND  
NEW YORK CITY

AUCTION

CHICAGO AND  
NEW YORK CITY

F.O.B.

LEADING  
SHIPPING POINTS

STATISTICAL BULLETIN No. 172

UNITED STATES DEPARTMENT OF AGRICULTURE  
Agricultural Marketing Service  
Fruit and Vegetable Division  
Washington, D. C. APRIL 1956

CONTENTS

	<u>Page</u>
Introduction . . . . .	1
Table 1.--Wholesale prices of specified fruits and vegetables at New York City and Chicago, each month by market, origin and description, 1955. . . . .	3
<u>Berries</u>	
Blueberries . . . . .	3
Cranberries . . . . .	3
Strawberries. . . . .	3
<u>Citrus Fruits</u>	
Limes . . . . .	3
<u>Other Fruits</u>	
Apples. . . . .	4
Avocados. . . . .	4
Cherries. . . . .	4
Peaches . . . . .	5
Pears . . . . .	5
<u>Miscellaneous Melons</u>	
Cantaloups. . . . .	5
Honeydew melons . . . . .	6
Watermelons . . . . .	6
<u>Vegetables</u>	
Artichokes, Globe type. . . . .	6
Asparagus . . . . .	6
Beans, Lima . . . . .	6
Beans, Snap, Green. . . . .	7
Beets . . . . .	7
Broccoli. . . . .	7
Cabbage . . . . .	8
Carrots . . . . .	8
Cauliflower . . . . .	9
Celery. . . . .	9
Corn, Green, Yellow . . . . .	9
Cucumbers . . . . .	10
Eggplant. . . . .	10
Endive-Chicory. . . . .	10
Escarole. . . . .	10
Kale. . . . .	10
Lettuce . . . . .	10
Mushrooms . . . . .	11
Onions. . . . .	11
Peas, Green . . . . .	11
Peppers, Green. . . . .	11
Potatoes, White . . . . .	12
Rhubarb . . . . .	12
Shallots. . . . .	12
Spinach . . . . .	12
Sweetpotatoes . . . . .	13
Tomatoes. . . . .	13

Table 2.--Auction prices of specified citrus and deciduous fruits in New York City and Chicago, each month, by market origin and description, 1955. . . . . 14

<u>Citrus Fruits</u>	
Grapefruit. . . . .	14
Lemons . . . . .	14
Oranges . . . . .	14
<u>Deciduous Fruits</u>	
Apples . . . . .	14
Apricots . . . . .	15
Cherries . . . . .	15
Grapes . . . . .	16

Table 2.--Continued

<u>Deciduous Fruits--Continued</u>	
Nectarines. . . . .	16
Peaches . . . . .	16
Pears . . . . .	17
Pineapples . . . . .	17
Plums . . . . .	18
Prunes, Fresh . . . . .	18

Table 3.--Average prices of specified fruits and vegetables at leading shipping points, each month by description of sale, 1955 . . . . . 19

<u>Berries</u>	
Blueberries . . . . .	19
Raspberries . . . . .	19
Strawberries . . . . .	19
<u>Other Fruits</u>	
Apples . . . . .	20
Apricots . . . . .	22
Cherries . . . . .	22
Grapes . . . . .	22
Nectarines . . . . .	23
Peaches . . . . .	23
Pears . . . . .	24
Plums . . . . .	25
Prunes . . . . .	25

<u>Miscellaneous Melons</u>	
Cantaloups . . . . .	26
Honeydews . . . . .	26
Watermelons . . . . .	26

<u>Vegetables</u>	
Beans, Lima . . . . .	28
Beans, Snap, Green . . . . .	28
Beans, Snap, Wax . . . . .	29
Brussels Sprouts . . . . .	30
Cabbage . . . . .	30
Carrots . . . . .	31
Cauliflower . . . . .	31
Celery . . . . .	32
Chinese Cabbage . . . . .	32
Corn, Green. . . . .	32
Cucumbers. . . . .	33
Eggplant . . . . .	34
Endive . . . . .	34
Escarole . . . . .	34
Lettuce. . . . .	35
Onions . . . . .	35
Peas, Green. . . . .	36
Peppers, Green . . . . .	36
Potatoes, White . . . . .	37
Radishes . . . . .	41
Spinach. . . . .	42
Sweetpotatoes. . . . .	42
Tomatoes . . . . .	42

Table 4.--Index of wholesale prices of fresh fruits and vegetables at New York City and Chicago, by months, 1936-55. . . . . 45

Table 5.--Computed wholesale values per carlot of domestic fresh fruits and vegetables, New York City and Chicago, by months, 1954-1955. . . . . 47

FRESH FRUIT AND VEGETABLE PRICES - 1955

WHOLESALE

AUCTION

F.O.B.

CHICAGO AND  
NEW YORK CITY

CHICAGO AND  
NEW YORK CITY

LEADING  
SHIPPING POINTS

Prepared by Leo G. Heflin, Fruit and Vegetable Division,  
Market News Branch, Agricultural Marketing Service

INTRODUCTION

The prices listed in this report represent sales in wholesale lots of fresh fruits and vegetables at New York City, Chicago, and at important shipping points where Market News field stations were located during 1955. The report also includes monthly average auction prices for important fresh fruits, compiled by the Statistical and Historical Research Branch, Agricultural Marketing Service, from information contained in the New York Daily Fruit Reporter and the Chicago Daily Fruit and Vegetable Reporter.

The wholesale prices for private sales at New York and Chicago during the year are simple averages of representative prices based on the local market reporters' estimates of volume of sales at different price levels, quality, condition, and other factors for Tuesday of each week during the month. These wholesale prices in most cases represent private sales in quantities of less than carload lots and generally represent sales made by the first seller on the wholesale market. Prices are for stock of generally good merchantable quality and condition - U. S. No. 1 grade when quoted. In a few instances, prices representing sales in carlots or sales at auction are reported, but these are indicated in the body of the report.

The prices reported for important shipping points or shipping areas are simple averages of the mid-points of the daily range throughout the year as reported by the local Market News offices. They refer to sales in straight or mixed carloads or truckloads, unless otherwise noted. An average shipping point price for a month generally is shown only when there were quotations for six or more days during that month.

The report includes prices considered representative of a commodity as to origin, variety, size and container. For example, the monthly prices shown for apples represent fruit of good quality and condition, mostly 2½-inch minimum size for selected varieties, believed to represent a large proportion of the market supply of eastern and midwestern fruit.

"Sales f.o.b." refer to transactions in which the buyer assumed responsibility for the commodity at shipping point. "Delivered sales, shipping point basis", refer to transactions in which the seller assumed responsibility for delivery to the market. Prices for the latter group of transactions were adjusted by the market reporters to a shipping point basis by making appropriate deductions for transportation and protective services.

Terms and conditions of sales and definitions pertaining to trade practices are more fully described in regulations issued by the Secretary of Agriculture in connection with the administration of the Perishable Agricultural Commodities Act.

The index of wholesale prices for fruits and vegetables at New York and Chicago was computed by weighting the monthly prices shown in this report by the monthly carlot and trucklot unloads, adjusted to uniform carlot equivalents, reported in New York and Chicago. The index was adjusted for seasonal variation based on experience in the base period, 1935-39. The index of wholesale prices of fruits and vegetables at New York and Chicago was computed from prices for the most important fruits and vegetables. Although the index numbers are believed to be representative of prices of fruits and vegetables on the markets at New York and Chicago, they do not include prices for produce sold in other sections of the country, nor do they allow for products that are not generally sold on these two markets or for commodities sold on these markets but not included in this price summary.

A table of estimated value per carlot of fresh fruits and vegetables 1954 to 1955 by months at New York and Chicago is included in this report. These estimates are intended to give a comparison rather than an absolute value per car. Therefore, uniform loadings (prewar basis) per carload were used over the entire period in computing relative values.

For information relative to fresh fruit and vegetable containers, refer to Farmers' Bulletin No. 2013, U. S. Department of Agriculture.

Table 1.--Wholesale prices of specified fruits and vegetables at New York City and Chicago, each month by market, origin, and description, 1955 1/

BERRIES

Market, origin, and description	Jan.	Feb.	Mar.	Apr.	May	June	July	Aug.	Sept.	Oct.	Nov.	Dec.
	Dol.	Dol.	Dol.	Dol.	Dol.	Dol.	Dol.	Dol.	Dol.	Dol.	Dol.	Dol.
<u>Blueberries</u>												
<b>New York:</b>												
N. J., cultivated, per pint. . . . .	-	-	-	-	-	.38	.23	.30	.38	-	-	-
N. C., " " " " . . . . .	-	-	-	-	.42½	.44½	-	-	-	-	-	-
<b>Chicago:</b>												
Mich., cultivated, per pint. . . . .	-	-	-	-	-	-	.28	.26	.31	.30	-	-
N. J., " " " " . . . . .	-	-	-	-	-	.44	.30	-	-	-	-	-
<u>Cranberries</u>												
<b>New York: 24-1 lb.</b>												
Film bags, carton--												
Mass., early varieties. . . . .	-	-	-	-	-	-	-	-	3.75	3.75	3.81	3.88
Mass., late Howe. . . . .	4.50	-	-	-	-	-	-	-	-	-	-	4.05
<b>Chicago: 24-1 lb.</b>												
Film bags, carton--												
Mass., early varieties. . . . .	-	-	-	-	-	-	-	-	4.08	3.50	3.35	-
Mass., Howe . . . . .	-	-	-	-	-	-	-	-	-	-	3.60	3.60
Wis., Howe . . . . .	-	-	-	-	-	-	-	-	-	-	-	3.45
Wis., Searle. . . . .	-	-	-	-	-	-	-	-	4.00	3.83	3.55	3.28
<u>Strawberries</u>												
<b>New York:</b>												
Per Pint--												
Calif., various varieties . . . . .	-	-	-	-	.38	.40	.36	.38	.38	.40	.48	.86
Fla., Missionary and No. 90 . . . . .	.40	.37	.26	-	-	-	-	-	-	-	-	-
La., Klondike and Klomore. . . . .	-	-	.35	.37	.32	-	-	-	-	-	-	-
Per Quart--												
N. J., Sparkle . . . . .	-	-	-	-	.37	.36	-	-	-	-	-	-
N. Y., " " " " . . . . .	-	-	-	-	-	.48	.50	-	-	-	-	-
Md., Blakmore. . . . .	-	-	-	-	.36	-	-	-	-	-	-	-
Va., " " " " . . . . .	-	-	-	-	.35	-	-	-	-	-	-	-
<b>Chicago:</b>												
Per 24-quart crate--												
Ark., Blakmore . . . . .	-	-	-	-	8.25	-	-	-	-	-	-	-
Ill., " " " " . . . . .	-	-	-	-	8.62	-	-	-	-	-	-	-
Ind., " " " " . . . . .	-	-	-	-	10.00	-	-	-	-	-	-	-
Ky., " " " " . . . . .	-	-	-	-	9.42	-	-	-	-	-	-	-
Tenn., " " " " . . . . .	-	-	-	-	8.00	-	-	-	-	-	-	-
Per 16-quart crate--												
Ky., Blakmore. . . . .	-	-	-	-	5.25	-	-	-	-	-	-	-
Mich., Premier. . . . .	-	-	-	-	4.90	5.00	-	-	-	-	-	-
Mich., Robinson . . . . .	-	-	-	-	-	6.08	5.25	-	-	-	-	-
Per 24-pint crate--												
La., Klondike and Klomore. . . . .	-	-	7.75	8.19	6.82	-	-	-	-	-	-	-
Per 12-pint tray--												
Calif., various varieties . . . . .	-	-	-	-	3.75	4.19	4.06	3.89	4.25	4.60	5.08	-

CITRUS FRUITS 2/

Limes

<b>New York:</b>												
Fla., Persian, var. sizes, 1/5-bushel carton . . . . .	1.54	1.06	-	-	2.80	1.30	1.09	1.15	.96	1.55	1.61	1.75
<b>Chicago:</b>												
Fla., Persian, var. sizes, 1/5-bushel carton . . . . .	1.39	1.52	2.38	2.99	2.84	1.35	1.19	1.09	1.16	1.53	1.54	1.79

1/ Prices shown are simple averages of representative prices for tuesday of each week during the month.

2/ For orange, grapefruit, and lemon prices see Table 2.



Table 1.--Continued

OTHER FRUITS

Market origin, and description	Jan.	Feb.	Mar.	Apr.	May	June	July	Aug.	Sept.	Oct.	Nov.	Dec.
	Dol.	Dol.	Dol.	Dol.	Dol.	Dol.	Dol.	Dol.	Dol.	Dol.	Dol.	Dol.
<u>Apples 3/</u>												
<u>New York:</u>												
<u>Eastern box or bushel basket,</u>												
<u>2 1/2-in. up, unless stated--</u>												
N.Y., Twenty Ounce, 2-3/4 in. up	-	-	-	-	-	-	-	2.53	2.28	-	-	-
N.Y., Cortland	1.92	1.93	-	-	-	-	-	-	-	1.31	1.49	1.50
N.Y., Delicious	3.79	4.00	4.00	4.50	4.50	-	-	-	2.94	2.48	2.78	2.97
N.Y., Early McIntosh	-	-	-	-	-	-	-	4.25	-	-	-	-
N.Y., McIntosh	2.52	2.52	2.58	2.71	2.95	-	-	-	1.85	1.75	2.15	1.97
N.Y., R.I. Greening	-	-	-	-	-	-	-	-	1.38	1.60	1.80	1.72
<u>Chicago:</u>												
<u>Bushel basket, 2 1/2-in. up,</u>												
<u>unless stated--</u>												
Ill., Jonathan, 2 1/2 in. up	-	-	-	-	-	-	-	5.00	3.69	-	-	-
Ill., Red Delicious	-	-	-	-	-	-	-	-	-	3.47	3.00	-
Ill., Wealthy	-	-	-	-	-	-	-	2.60	-	-	-	-
Ill., Wealthy, 2 1/2 in. up	-	-	-	-	-	-	4.12	-	-	-	-	-
Ill., Transparent, 2 in. up	-	-	-	-	-	4.85	4.75	-	-	-	-	-
Ill., Willow Twig	-	-	-	3.48	3.83	-	-	-	-	-	-	-
Mich., Delicious	3.65	3.52	3.63	-	-	-	-	-	4.25	2.88	-	-
Mich., Duchess, 2 1/2 in. up	-	-	-	-	-	-	3.00	1.90	-	-	-	-
Mich., Jonathan, 2 1/2 in. up	3.30	3.25	3.25	-	-	-	-	-	-	2.62	2.69	2.75
Mich., McIntosh	3.15	3.09	3.13	3.25	-	-	-	3.75	2.52	2.41	2.60	2.45
Mich., R.I. Greening	3.12	3.00	-	-	-	-	-	-	-	-	-	-
Mich., Red Delicious	-	-	-	-	-	-	-	-	4.70	3.38	3.00	3.38
Mich., Transparent, 2 in. up	-	-	-	-	-	-	3.62	-	-	-	-	-
Mich., Wealthy	-	-	-	-	-	-	-	2.95	2.40	-	-	-
Mich., Baldwin	-	-	-	-	2.00	-	-	-	-	-	-	-
Wis., Dudley	-	-	-	-	-	-	-	2.37	2.12	-	-	-
Wis., McIntosh	-	-	-	-	-	-	-	-	-	2.47	2.50	-
Wis., R.I. Greening	-	-	-	-	-	-	-	-	-	-	2.35	-
<u>Avocados</u>												
<u>New York:</u>												
Calif., var. sizes, flat	-	3.00	3.05	2.94	2.95	3.04	3.53	3.62	-	-	-	-
Fla., var. sizes, flat	1.51	1.56	-	-	-	-	1.61	1.72	1.62	2.18	1.52	1.25
<u>Chicago:</u>												
Calif., var. sizes, flat	3.45	3.04	3.00	2.92	2.79	2.70	2.98	3.21	2.97	-	-	-
Fla., var. sizes, carton	1.44	1.38	-	-	-	-	1.95	1.71	1.44	2.56	1.48	1.39
<u>Cherries 3/</u>												
<u>New York:</u>												
<u>Per Quart--</u>												
N.Y., Sour varieties	-	-	-	-	-	.23	-	-	-	-	-	-
<u>12-quart basket--</u>												
N.Y., Sour varieties	-	-	-	-	-	-	2.06	-	-	-	-	-
<u>Chicago:</u>												
<u>16-quart crate--</u>												
Mich., Sour varieties	-	-	-	-	-	5.25	4.12	-	-	-	-	-
Mich., Sweet varieties	-	-	-	-	-	6.25	5.50	-	-	-	-	-

3/ For Western States see Table 2.

OTHER FRUITS—CONTINUED

Market, origin, and description	Jan.	Feb.	Mar.	Apr.	May	June	July	Aug.	Sept.	Oct.	Nov.	Dec.
	Dol.	Dol.	Dol.	Dol.	Dol.	Dol.	Dol.	Dol.	Dol.	Dol.	Dol.	Dol.
<u>Peaches 3/</u>												
<u>New York:</u>												
<u>3/4-bushel basket—</u>												
N. J., Elberta, 2 1/2 in. up . . . . .	-	-	-	-	-	-	-	2.85	-	-	-	-
N. J., Jerseyland, 2 1/2 in. up . . . . .	-	-	-	-	-	-	5.50	5.00	-	-	-	-
N. J., Triogen, 2 1/2 in. up . . . . .	-	-	-	-	-	-	-	3.86	-	-	-	-
Va., Elberta, 2 1/2 in. up . . . . .	-	-	-	-	-	-	-	-	3.00	-	-	-
<u>1/2-bushel basket—</u>												
Md., Redhaven, 2 1/2 in. up . . . . .	-	-	-	-	-	-	6.12	-	-	-	-	-
Md., Triogen, 2 1/2 in. up . . . . .	-	-	-	-	-	-	5.12	-	-	-	-	-
Md., Triogen, 2 in. up . . . . .	-	-	-	-	-	-	-	4.75	-	-	-	-
Md., Elberta, 2 in. up . . . . .	-	-	-	-	-	-	-	2.56	-	-	-	-
Va., Elberta, 2 1/2 in. up . . . . .	-	-	-	-	-	-	-	3.00	-	-	-	-
<u>Bushel basket—</u>												
N. Y., Elberta, 2 1/2 in. up . . . . .	-	-	-	-	-	-	-	-	2.73	-	-	-
Pa., Elberta, 2 1/2 in. up . . . . .	-	-	-	-	-	-	-	3.25	3.28	-	-	-
Southern States no quotations 1955 due crop failure.												
<u>Chicago:</u>												
<u>Bushel basket—</u>												
Ind., Halehaven, 2 in. up . . . . .	-	-	-	-	-	-	-	3.00	-	-	-	-
Ind., Redhaven, 2 in. up . . . . .	-	-	-	-	-	-	-	5.62	-	-	-	-
Mich., Early Elberta, 2 in. up . . . . .	-	-	-	-	-	-	-	3.75	-	-	-	-
Mich., Elberta, 2 in. up . . . . .	-	-	-	-	-	-	-	2.75	3.17	-	-	-
Mich., Fairhaven, 2 in. up . . . . .	-	-	-	-	-	-	-	4.10	-	-	-	-
Mich., Golden Jubilee, 2 in. up . . . . .	-	-	-	-	-	-	-	4.25	-	-	-	-
Mich., Halehaven, 2 in. up . . . . .	-	-	-	-	-	-	-	3.05	-	-	-	-
Mich., Redhaven, 2 in. up . . . . .	-	-	-	-	-	-	-	5.13	-	-	-	-
Southern States no quotations 1955 due crop failure.												
<u>Pears 3/</u>												
<u>New York:</u>												
<u>Bushel basket—</u>												
N. Y., Bosc . . . . .	-	-	-	-	-	-	-	-	-	-	3.15	3.04
N. Y., Bartlett . . . . .	-	-	-	-	-	-	-	-	3.20	3.20	-	-
N. Y., Clapp Favorite . . . . .	-	-	-	-	-	-	-	2.75	3.22	3.16	-	-
N. Y., Seckel . . . . .	-	-	-	-	-	-	-	-	-	2.49	2.01	1.88
<u>Chicago:</u>												
<u>Bushel basket—</u>												
Mich., Bosc, 2 in. up . . . . .	-	-	-	-	-	-	-	-	3.00	2.75	-	-
Mich., Bartlett, 2 in. up . . . . .	-	-	-	-	-	-	-	3.60	3.50	-	-	-
Mich., Clapp Favorite, 2 in. up . . . . .	-	-	-	-	-	-	-	2.75	-	-	-	-
<u>MELONS</u>												
<u>Cantaloups</u>												
<u>New York:</u>												
<u>Jumbo crate—36's and 45's</u>												
Ariz. . . . .	-	-	-	-	-	8.30	6.68	-	-	-	-	-
Calif. . . . .	-	-	-	-	-	8.58	8.41	5.08	5.75	7.82	-	-
Texas . . . . .	-	-	-	-	11.12	8.78	-	-	-	-	-	-
Mexico . . . . .	-	-	15.10	12.75	14.46	9.25	-	-	-	-	-	-
<u>Chicago:</u>												
<u>Jumbo crate—36's and 45's unless stated</u>												
Ariz. . . . .	-	-	-	-	-	7.38	6.10	-	-	-	-	-
Calif. . . . .	-	-	-	-	-	7.75	6.83	4.45	5.48	5.00	-	-
Ind., 24's and 36's . . . . .	-	-	-	-	-	-	-	1.68	-	-	-	-
Texas . . . . .	-	-	-	-	10.00	8.38	-	-	-	-	-	-
Mexico . . . . .	-	-	-	12.33	13.00	8.75	-	-	-	-	-	-

3/ For Western States see Table 2.

Table 1.--Continued

MELONS—CONTINUED

Market, origin, and description	Jan.	Feb.	Mar.	Apr.	May	June	July	Aug.	Sept.	Oct.	Nov.	Dec.
	Dol.	Dol.	Dol.	Dol.	Dol.	Dol.	Dol.	Dol.	Dol.	Dol.	Dol.	Dol.
<u>Honeydew Melons</u>												
<u>New York:</u>												
Standard crate--9's - 12's												
Ariz. . . . .	-	-	-	-	-	4.66	4.66	3.50	-	-	4.62	-
Calif. . . . .	-	-	-	-	-	4.81	4.44	3.29	3.30	3.52	-	-
Texas . . . . .	-	-	-	-	-	4.63	4.65	-	-	-	-	-
<u>Chicago:</u>												
Standard crate--9's - 12's												
Ariz. . . . .	-	-	-	-	-	4.42	3.85	3.35	2.78	3.16	2.98	-
Calif. . . . .	-	-	-	-	-	-	4.00	3.10	-	-	-	-
<u>Watermelons</u>												
<u>New York:</u>												
Per Melon--various varieties, 30-lb. average												
Fla. . . . .	-	-	-	-	2.58	1.89	1.50	-	-	-	-	-
S. C. . . . .	-	-	-	-	-	-	1.10	.99	-	-	-	-
Md. . . . .	-	-	-	-	-	-	-	-	.50	-	-	-
<u>Chicago:</u>												
Per Cwt.--												
Fla., Cannonball, 32-36-lb. av..	-	-	-	-	6.03	4.62	2.58	-	-	-	-	-
Okla. . . . .	-	-	-	-	-	-	-	3.04	-	-	-	-
Texas . . . . .	-	-	-	-	-	-	2.45	3.75	-	-	-	-
Fla., Long Grey, 24-28-lb. av..	-	-	-	-	6.03	4.35	3.00	-	-	-	-	-

VEGETABLES

<u>Artichokes, Globe type</u>												
<u>New York:</u>												
Calif., var. sizes, 7-inch box .	3.25	3.53	2.24	2.34	2.05	1.25	-	-	-	3.75	2.01	2.36
<u>Chicago:</u>												
Calif., var. sizes, 7-inch box .	-	-	-	-	-	-	-	-	3.19	1.79	2.31	2.22

Asparagus

<u>New York:</u>												
<u>Pyramid crate--</u>												
Calif., extra select & select 12 bunches. . . . .	-	-	9.50	9.66	-	-	-	-	-	-	-	-
Calif., loose, large. . . . .	-	-	13.00	6.98	-	-	-	-	-	-	-	-
N. J., colossal & extra fancy 12 bunches. . . . .	-	-	-	5.00	4.34	3.79	3.21	-	-	-	-	-
<u>Chicago:</u>												
<u>Pyramid crate--</u>												
Calif., select & extra fancy 12 bunches. . . . .	-	-	12.00	8.17	-	-	-	-	-	-	-	-
Calif., loose, large. . . . .	-	-	-	6.22	-	-	-	-	-	-	-	-
Ill., Godfrey Section fancy 12 bunches. . . . .	-	-	-	2.92	2.75	3.50	-	-	-	-	-	-

Beans, Lima

<u>New York:</u>												
<u>Bushel hamper--</u>												
Fla. . . . .	5.50	-	-	-	-	-	-	3.42	4.14	3.00	-	-
L. I. . . . .	-	-	-	-	-	-	-	-	-	-	-	-
<u>Chicago:</u>												
Fla., bushel hamper . . . . .	5.50	-	-	-	-	-	-	-	1.46	1.25	-	-
Mich., 12-qt. basket. . . . .	-	-	-	-	-	-	-	-	-	-	-	-

Table 1.—Continued

-7-

## VEGETABLES—CONTINUED

Market, origin, and description	Jan.	Feb.	Mar.	Apr.	May	June	July	Aug.	Sept.	Oct.	Nov.	Dec.
	Dol.	Dol.	Dol.	Dol.	Dol.	Dol.	Dol.	Dol.	Dol.	Dol.	Dol.	Dol.
<u>Beans, Snap, Green</u>												
<u>New York:</u>												
<u>Bushel hamper--</u>												
Fla., Plentiful	4.80	4.56	3.76	3.44	3.58	-	-	-	-	-	2.80	3.12
Fla., Valentine	5.94	5.04	4.30	4.30	5.00	-	-	-	-	-	3.42	3.64
N. J.	-	-	-	-	-	1.76	1.60	-	4.18	3.00	-	-
N. Y.	-	-	-	-	-	-	2.38	3.58	3.96	-	-	-
S. C., Various varieties	-	-	-	-	2.95	1.37	-	-	-	-	-	-
S. C.	-	-	-	-	3.46	-	-	-	-	-	-	-
Va., Valentine	-	-	-	-	-	1.58	-	-	-	3.11	-	-
<u>Chicago:</u>												
<u>Bushel hamper--</u>												
Fla., Valentine	6.00	5.31	4.39	4.69	5.25	-	-	-	-	-	3.64	3.69
Ill.	-	-	-	-	-	2.58	1.98	3.27	2.92	2.25	-	-
La.	-	-	-	-	4.58	3.12	-	-	-	-	4.00	-
Mich.	-	-	-	-	-	-	3.00	3.30	3.50	-	-	-
Miss.	-	-	-	-	3.70	2.72	-	-	-	-	-	-
S. C.	-	-	-	-	3.25	-	-	-	-	-	-	-
Va.	-	-	-	-	-	-	-	-	-	3.75	-	-
<u>Beets</u>												
<u>New York:</u>												
N. J., 2-dozen bunches	-	-	-	-	1.88	.86	.95	1.71	1.71	1.05	1.55	2.26
1-3/5-bushel box	1.44	-	-	-	-	-	-	-	-	-	-	-
S. C., 2-dozen bunches	-	-	-	-	2.42	-	-	-	-	-	-	-
1-3/5-bushel box	-	-	-	-	-	-	-	-	-	-	-	-
Texas, 3-dozen bunches	-	-	-	-	-	-	-	-	-	-	-	-
1/2 W.C.A. crate	3.07	2.79	3.19	2.92	-	-	-	-	-	-	-	3.54
Texas, 50-lb. sack topped, washed	2.74	-	-	-	-	-	-	-	-	-	-	-
<u>Chicago:</u>												
Ill., 18-bunches	-	-	-	-	-	.90	.84	.97	1.25	1.00	-	-
1-3/5-bushel box	-	-	-	-	-	-	-	-	-	-	-	-
Mo., 2-dozen bunches	-	-	-	-	2.38	1.37	-	-	-	-	-	-
1-3/5-bushel box	-	-	-	-	2.75	-	-	-	-	-	-	-
S. C., 2-1/2-dozen bunches	-	-	-	-	3.00	2.50	-	-	-	-	-	-
1-3/5-bushel box	-	-	-	3.00	2.50	-	-	-	-	-	-	-
Texas, 3-dozen bunches	-	-	-	-	-	-	-	-	-	-	-	-
1/2-L.A. crate	2.81	2.44	2.86	2.74	2.35	-	-	-	-	-	-	-
<u>Broccoli</u>												
<u>New York:</u>												
Calif., 28-bunches, pony crate	7.67	-	-	-	3.13	3.33	-	-	-	-	-	-
Calif., 14-bunches, 1/2-crate	-	4.34	3.42	3.07	-	-	-	3.42	4.18	3.14	3.17	3.42
Colo., 14-bunches, per crate	-	-	-	-	-	-	-	4.87	-	-	-	-
Pa., 12-bunches, 4/5-bushel crate	-	-	-	-	-	2.75	2.58	2.60	3.06	2.50	2.35	2.00
Texas, 28-bunches, pony crate	-	6.67	7.50	-	-	-	-	-	-	-	-	-
<u>Chicago:</u>												
Ariz., 14-bunches, 1/2-crate	-	-	-	-	-	-	-	-	-	-	-	3.10
Calif., 28-bunches, pony crate	7.45	6.12	5.98	-	-	-	-	-	-	-	-	-
Calif., 14-bunches, 1/2-crate	4.12	3.50	3.17	2.74	2.77	2.68	-	3.50	3.56	2.98	2.92	3.21
Texas, 28-bunches, pony crate	-	5.65	6.13	-	-	-	-	-	-	-	-	-

Table 1.—Continued

## VEGETABLES—CONTINUED

Market, origin, and description	Jan.	Feb.	Mar.	Apr.	May	June	July	Aug.	Sept.	Oct.	Nov.	Dec.
	Dol.	Dol.	Dol.	Dol.	Dol.	Dol.	Dol.	Dol.	Dol.	Dol.	Dol.	Dol.
<u>Cabbage</u>												
<u>New York:</u>												
<u>Danish type—</u>												
W. Y., 50-lb. sacks . . . . .	.95	1.42	1.98	-	-	-	-	-	1.94	1.50	1.97	1.97
<u>Domestic Round type—</u>												
Fla., 1-3/4-bushel crate . . . . .	2.53	2.38	2.25	2.34	3.56	-	-	-	-	-	3.12	2.95
N. J., 1-3/5-bushel box . . . . .	-	-	-	-	-	.80	.87	1.59	1.78	-	-	-
N. C., 1-3/4-bushel crate . . . . .	-	-	-	-	2.92	-	-	-	-	-	-	-
S. C., 1-3/4-bushel crate . . . . .	-	-	-	1.94	2.76	-	-	-	-	-	-	-
Texas, 1-3/4-bushel crate . . . . .	2.90	2.61	2.32	-	-	-	-	-	-	-	-	-
Va., 1-3/4-bushel crate . . . . .	-	-	-	-	3.60	.94	-	-	-	-	-	-
<u>Chicago:</u>												
<u>Danish type—</u>												
Wis., 50-pound sack . . . . .	1.31	1.50	-	-	-	-	-	-	-	-	2.30	1.80
<u>Domestic Round type—</u>												
Ariz., W.G.A. crate . . . . .	-	-	-	-	-	-	-	-	-	-	5.80	5.00
Ariz., 1-3/4-bushel crate . . . . .	-	-	-	-	-	-	-	-	-	-	-	3.00
Calif., W.O.A. crate . . . . .	-	-	-	-	5.90	3.25	-	-	-	-	-	-
Fla., 50-lb. sack . . . . .	-	-	-	2.65	-	-	-	-	-	-	-	-
Fla., 1-3/4-bushel crate . . . . .	2.25	2.45	2.44	2.75	2.50	1.55	-	-	-	-	-	3.12
Ca., 1-3/4-bushel crate . . . . .	-	-	-	2.20	3.32	-	-	-	-	-	-	-
Ill., 40-50-lb. crate . . . . .	-	-	-	-	-	1.48	1.01	-	-	-	-	-
Ill., 50-60-lb. crate . . . . .	-	-	-	-	-	-	-	1.42	1.91	1.57	2.50	-
Miss., 1-3/4-bushel crate . . . . .	-	-	-	-	3.17	1.25	-	-	-	-	-	-
S. C., 1-3/4-bushel crate . . . . .	-	-	-	-	3.55	-	-	-	-	-	-	-
Tenn., 1-3/4-bushel crate . . . . .	-	-	-	-	2.75	1.56	-	-	-	-	-	-
Texas, 1-3/4-bushel crate . . . . .	2.75	2.40	2.45	-	-	-	-	-	-	-	-	3.12
Texas, 50-lb. sack . . . . .	-	-	-	-	-	-	-	-	-	-	-	3.00
Wis., 50-60-lb. crate . . . . .	-	-	-	-	-	-	-	1.55	-	-	-	-
Wis., 50-lb. sack . . . . .	-	-	-	-	-	-	-	-	1.48	1.36	1.63	-
<u>Carrots</u>												
<u>New York:</u>												
<u>Bunched, 6-dozen—</u>												
Ariz., W.G.A. crate . . . . .	-	-	-	-	-	4.50	-	-	-	-	-	-
Calif., W.G.A. crate . . . . .	6.72	5.57	5.71	5.67	5.63	5.76	5.22	6.27	7.28	7.54	7.43	6.82
Texas, W.G.A. crate . . . . .	-	4.43	4.46	-	-	-	-	-	-	-	-	-
<u>Topped, washed—</u>												
Ariz., 48-1-lb. film bag, crate . . . . .	-	4.60	4.31	-	-	3.75	4.00	-	-	-	-	-
Calif., 48-1-lb. film bag, crate . . . . .	5.01	4.25	4.21	4.18	4.05	4.34	3.98	4.53	6.06	5.08	5.94	6.52
Texas, 48-1-lb. film bag, crate . . . . .	4.06	3.96	3.79	3.70	3.66	4.04	-	-	-	-	-	-
N. J., bushel basket . . . . .	-	-	2.00	2.00	-	-	1.71	1.37	1.28	-	-	-
N. Y., bushel basket . . . . .	1.42	1.66	1.52	-	-	-	-	-	-	-	1.76	2.06
<u>Chicago:</u>												
<u>Bunched, 6-dozen—</u>												
Ariz., W.G.A. crate . . . . .	-	-	-	-	-	-	-	-	-	-	-	5.62
Calif., W.G.A. crate . . . . .	5.82	5.49	5.00	4.78	4.53	5.92	4.59	5.26	5.65	-	-	5.62
<u>Chicago:</u>												
<u>Topped, washed—</u>												
Ariz., 48-1-lb. film bag, crate . . . . .	-	4.10	3.57	-	-	4.26	3.26	-	-	-	-	5.42
Calif., 48-1-lb. film bag, crate . . . . .	-	-	-	-	-	-	-	-	-	-	-	-
Calif., 50-lb. sack . . . . .	4.14	4.00	3.82	2.85	3.72	4.20	3.79	4.24	5.38	4.69	5.44	5.89
Ill., 50-lb. sack . . . . .	-	-	-	2.45	2.64	2.61	2.55	2.10	2.45	-	-	-
Ill., 50-lb. sack . . . . .	1.00	1.10	1.53	1.70	1.90	-	-	1.25	1.25	1.24	1.39	1.98
New Mexico, 48-1-lb. film bag, crate . . . . .	-	-	-	-	-	-	-	-	-	4.02	4.25	-
Texas, 48-1-lb. film bag, crate . . . . .	-	-	-	-	-	-	-	-	-	-	-	-
Texas, 50-lb. sack . . . . .	3.84	3.65	3.38	3.35	3.46	3.65	-	-	-	-	-	5.02
Texas, 50-lb. sack . . . . .	-	-	-	2.36	-	-	-	-	-	-	-	-
Wis., 50-lb. sack . . . . .	-	-	-	-	-	-	-	-	-	-	1.65	-

## VEGETABLES—CONTINUED

Market, origin, and description	Jan.	Feb.	Mar.	Apr.	May	June	July	Aug.	Sept.	Oct.	Nov.	Dec.
	Dol.	Dol.	Dol.	Dol.	Dol.	Dol.	Dol.	Dol.	Dol.	Dol.	Dol.	Dol.
<u>Cauliflower</u>												
<b>New York:</b>												
Calif., 18's & lgr. W.G.A. crate	-	-	-	5.21	5.27	-	-	-	-	-	-	-
Colo., 12's & lgr., W.G.A. crate	-	-	-	-	-	-	-	5.35	-	-	-	-
N. J., 12's & lgr. 1-3/5-bu. crate	-	-	-	-	-	1.43	-	-	-	-	-	-
<u>Double-deck crate—4/</u>												
Calif., 12's & lgr.	-	-	4.98	4.68	-	-	-	-	-	-	-	-
Del., 12's & lgr.	-	-	-	-	-	-	-	-	-	-	-	3.50
Fla., 12's & lgr.	-	4.02	3.92	-	-	-	-	-	-	-	-	-
L. I., 12's & lgr.	-	-	-	-	-	-	-	-	-	1.91	2.34	-
N. Y., 12's & lgr.	-	-	-	-	-	-	2.42	2.30	3.22	3.00	-	-
Texas, 12's & lgr.	3.56	4.84	5.00	-	-	-	-	-	-	-	-	4.17
<b>Chicago:</b>												
Calif., 12's & lgr., W.G.A. crate	4.50	-	-	-	-	-	-	-	-	-	-	-
Calif., 18's & lgr., W.G.A. crate	-	5.50	4.98	4.41	4.59	4.34	4.55	-	4.75	-	-	4.30
Colo., 18's & lgr., W.G.A. crate	-	-	-	-	-	-	-	4.85	5.05	-	-	-
Mich., 12's & lgr., W.G.A. crate	-	-	-	-	-	-	-	-	-	2.46	2.01	-
Mo., 11-12's, W.G.A. crate	-	-	-	-	-	2.00	-	-	-	-	-	-
<u>Double-deck crate—4/</u>												
Fla., 12's & lgr.	3.90	-	-	-	-	-	-	-	-	-	-	-
N. Y., 12's & lgr.	-	-	-	-	-	-	-	-	-	3.00	3.10	3.35
Texas, 12's & lgr.	3.39	-	-	-	-	-	-	-	-	-	-	3.67
Texas, 14-15's	-	4.38	-	-	-	-	-	-	-	-	-	-
<u>Pony crate—</u>												
Calif., 12's & lgr.	-	3.47	3.01	2.75	2.73	-	-	-	-	-	-	-
Colo., 13-15's	-	-	-	-	-	-	2.10	2.93	-	-	-	-
Wash., 10-12's	-	-	-	-	-	-	2.72	-	-	-	-	-
<u>Celery</u>												
<b>New York:</b>												
<u>16-inch crate—trimmed tops</u>												
Calif., Pascal type, 2-2 1/2 dozen	5.11	5.54	5.48	4.76	4.52	4.60	4.36	4.52	6.06	5.43	6.33	5.25
Fla., Pascal type, 2-3 dozen	3.28	4.14	3.80	3.40	3.16	3.51	-	-	-	-	-	-
Fla., Golden Heart, 6-10 dozen	4.96	6.53	5.31	4.25	4.52	-	-	-	-	-	-	-
N. Y., Golden Heart, 2-4 dozen	-	-	-	-	-	-	2.48	4.20	5.54	4.58	4.25	-
N. Y., Pascal type, 2-3 dozen	-	-	-	-	-	-	2.81	3.07	4.67	-	4.25	3.96
<b>Chicago:</b>												
<u>16-inch crate—trimmed tops</u>												
Calif., Pascal type, 2-3 dozen	4.18	5.02	5.21	4.71	3.97	4.08	4.15	4.23	5.35	5.02	4.05	3.61
Fla., Pascal type, 2-4 dozen	3.38	4.19	3.76	3.71	3.25	3.20	-	-	-	-	-	-
Fla., Golden Heart, 4-8 dozen	4.97	5.71	5.20	4.44	3.70	-	-	-	-	2.98	3.00	-
Mich., Golden Heart, 2-4 dozen	-	-	-	-	-	-	-	-	-	-	-	-
Mich., Pascal type, 2-3 dozen	-	-	-	-	-	-	-	2.56	3.56	2.92	-	-
Mich., Golden Heart, 3-6 dozen, 4/5-crate	-	-	-	-	-	3.25	1.46	-	-	-	-	-
<u>Corn, Green, Yellow</u>												
<b>New York:</b>												
<u>Per crate—5-dozen</u>												
Calif.	-	-	-	-	-	3.75	2.62	-	-	-	-	-
Fla.	4.39	3.88	4.14	4.17	2.66	3.06	2.18	-	-	-	-	-
N. J.	-	-	-	-	-	-	1.28	1.32	-	-	-	-
N. Y.	-	-	-	-	-	-	-	2.08	1.68	-	-	-
Va.	-	-	-	-	-	-	1.23	-	-	-	-	-
<b>Chicago:</b>												
<u>Per crate—</u>												
Calif., 5-dozen	-	-	-	-	-	3.19	2.62	-	-	-	-	-
Fla., 5-dozen	4.50	4.15	4.30	4.09	2.86	2.85	-	-	-	-	-	-
Ill., 4-5-dozen	-	-	-	-	-	-	.80	.93	1.25	-	-	-

4/ For Western States see table 2.

Table 1.—Continued

VEGETABLES—CONTINUED

Market, origin, and description	Jan.	Feb.	Mar.	Apr.	May	June	July	Aug.	Sept.	Oct.	Nov.	Dec.
	Dol.	Dol.	Dol.	Dol.	Dol.	Dol.	Dol.	Dol.	Dol.	Dol.	Dol.	Dol.
<u>Cucumbers</u>												
<u>New York:</u>												
<u>Bushel baskets—med.-lge.</u>												
Fla., . . . . .	5.25	6.34	11.50	5.95	6.18	-	-	-	4.38	3.46	3.40	5.01
L. I., . . . . .	-	-	-	-	-	-	-	-	-	3.00	-	-
Md., . . . . .	-	-	-	-	-	-	1.72	3.00	-	-	-	-
N. J., . . . . .	-	-	-	-	-	-	2.24	3.39	-	-	-	-
N. Y., . . . . .	-	-	-	-	-	-	-	4.12	3.69	3.50	-	-
N. C., . . . . .	-	-	-	-	-	2.28	-	-	-	-	-	-
S. C., . . . . .	-	-	-	-	5.57	2.15	-	-	-	-	-	-
Va., . . . . .	-	-	-	-	-	-	1.25	-	-	-	-	-
Cuba, . . . . .	-	7.88	10.20	19.00	-	-	-	-	-	-	-	-
<u>Chicago:</u>												
<u>Bushel baskets—med.-lge.</u>												
Ala., . . . . .	-	-	-	-	5.50	2.70	-	-	-	-	-	-
Fla., . . . . .	5.95	7.12	10.80	9.38	5.92	3.00	-	-	-	3.92	3.85	4.94
Ill., . . . . .	-	-	-	-	-	-	2.36	2.67	2.88	-	-	-
La., . . . . .	-	-	-	-	5.57	2.70	-	-	-	3.75	-	-
Mich., . . . . .	-	-	-	-	-	-	3.25	4.08	3.94	-	-	-
N. C., . . . . .	-	-	-	-	-	2.50	-	-	-	-	-	-
S. C., . . . . .	-	-	-	-	-	3.03	-	-	-	-	-	-
<u>Eggplant</u>												
<u>New York:</u>												
<u>Bushel basket—</u>												
Fla., . . . . .	2.51	4.04	3.95	2.36	2.94	2.98	2.10	-	-	2.27	1.99	1.78
N. C., . . . . .	-	-	-	-	-	-	2.48	-	-	-	-	-
N. J., . . . . .	-	-	-	-	-	-	-	1.60	1.41	1.16	-	-
<u>Chicago:</u>												
<u>Bushel basket—</u>												
Fla., . . . . .	2.59	3.25	4.13	2.25	3.02	2.65	-	-	-	2.65	2.17	1.92
Ill., . . . . .	-	-	-	-	-	-	-	1.50	1.49	1.50	-	-
<u>Endive-Chicory</u>												
<u>New York:</u>												
<u>1-1/9-bushel crate—</u>												
Fla., . . . . .	1.86	2.31	2.40	1.98	2.42	1.50	-	-	-	-	1.85	2.00
N. J., 1-1/2-bushel crate . . . . .	-	-	-	-	-	1.26	1.80	2.43	2.24	1.09	.81	-
<u>Escarole</u>												
<u>New York:</u>												
<u>Fla., 1-1/9-bushel crate . . . . .</u>												
	1.81	1.82	1.58	1.60	1.80	1.50	-	-	-	-	1.74	1.91
<u>N. J., 1-1/2-bushel crate . . . . .</u>												
	-	-	-	-	-	1.97	.96	1.71	2.40	1.02	.81	-
<u>Chicago:</u>												
<u>Ill., bushel basket . . . . .</u>												
	-	-	-	-	-	1.00	.99	1.41	1.71	1.15	1.00	-
<u>Kale</u>												
<u>New York:</u>												
<u>N. J., 1-1/2-bushel box . . . . .</u>												
	-	-	-	.88	.83	-	.81	.62	1.50	.98	.72	.82
<u>Va., bushel basket . . . . .</u>												
	1.23	1.36	1.10	.60	-	-	-	-	-	.96	.94	-
<u>Lettuce</u>												
<u>New York:</u>												
<u>Big Boston type—2 dozen heads</u>												
Fla., Eastern crate . . . . .	2.32	2.43	3.12	3.19	2.94	-	-	-	-	-	-	-
N. J., Eastern crate . . . . .	-	-	-	-	1.00	.80	1.32	-	-	-	-	-
N. Y., Eastern crate . . . . .	-	-	-	-	-	-	1.56	2.50	-	-	-	-
<u>Iceberg type—2 dozen heads</u>												
Ariz., carton . . . . .	4.29	3.56	-	3.44	2.86	-	-	-	-	-	3.78	3.57
Calif., carton . . . . .	4.32	3.72	4.02	4.20	2.05	3.58	3.41	4.02	4.32	3.42	3.50	3.66
N. J., Eastern crate . . . . .	-	-	-	-	-	.98	.95	-	-	-	-	-
N. Y., Eastern crate . . . . .	-	-	-	-	-	-	1.46	-	-	-	-	-
<u>Chicago:</u>												
<u>Iceberg type—2 doz. heads—carton</u>												
Ariz., . . . . .	3.55	3.16	3.16	3.48	2.71	-	-	-	-	-	2.84	3.01
Calif., . . . . .	3.59	3.32	3.50	3.42	2.29	3.22	3.10	3.57	3.78	2.78	2.28	2.87

## VEGETABLES—CONTINUED

Market, origin, and Description	Jan.	Feb.	Mar.	Apr.	May	June	July	Aug.	Sept.	Oct.	Nov.	Dec.
	Dol.	Dol.	Dol.	Dol.	Dol.	Dol.	Dol.	Dol.	Dol.	Dol.	Dol.	Dol.
<u>Mushrooms</u>												
New York:												
Extra Fancy & Special--												
Pa., 4-quart basket . . . . .	1.15	1.12	1.05	1.01	1.10	1.45	1.46	1.63	1.41	1.30	1.27	1.28
Chicago:												
Ill., 1-pound carton . . . . .	.53	.57	.55	.55	.54	.57	.57	.59	.62	.58	.57	.57
<u>Onions</u>												
New York:												
50-pound sack--												
Calif., Yellow . . . . .	-	-	-	-	-	2.65	2.60	2.61	-	-	-	-
Idaho, Spanish type 3" & larger . . . . .	2.66	2.66	2.67	3.95	-	-	-	2.68	2.79	2.63	2.59	2.70
N. J., Yellow, Med. . . . .	-	-	-	-	-	-	1.66	1.12	-	-	-	-
N. Y., Orange Co., Yellow, Med. . . . .	-	-	-	-	-	-	-	1.27	1.46	1.62	1.66	1.43
N. Y., Western Section, Yellow, Med. . . . .	1.80	1.68	1.39	1.52	1.24	-	-	-	-	-	2.13	1.96
Texas, Yellow Bermuda . . . . .	-	-	-	2.66	2.32	2.60	2.62	-	-	-	-	-
Texas, Grano, 3" min. . . . .	-	-	-	-	-	2.66	-	-	-	-	-	-
Wash., Yellow . . . . .	-	-	-	-	-	-	-	2.52	2.60	-	-	-
Chicago:												
50-pound sack--												
Ariz., Yellow Bermuda . . . . .	-	-	-	-	-	2.88	-	-	-	-	-	-
Calif., Yellow . . . . .	-	-	-	-	-	-	2.23	-	-	-	-	-
Calif., Spanish type, 3" & lgr. . . . .	-	-	-	-	-	2.32	2.25	2.32	2.39	-	-	-
Colo., Spanish type, 3" & lgr. . . . .	-	-	-	-	-	-	-	2.29	2.38	2.25	2.32	2.39
Idaho-Oreg. Spanish type, 3" & lgr. . . . .	2.34	2.33	2.38	3.00	-	-	-	2.30	-	2.15	2.29	2.36
Midwestern, Yellow Globe, Med. . . . .	1.50	1.35	1.19	1.09	.52	-	1.20	1.18	1.75	1.92	1.93	1.82
Texas, Yellow Bermuda . . . . .	-	-	-	2.60	2.05	2.30	-	-	-	-	-	-
Texas, Yellow, 3" & lgr. . . . .	-	-	-	-	-	-	-	2.25	-	-	-	-
Texas, Crystal White Wax, 2-3" . . . . .	-	-	-	2.99	2.87	3.08	-	-	-	-	-	-
Texas, Grano, 3" min. . . . .	-	-	-	2.10	1.96	2.15	-	-	-	-	-	-
Texas, Granax, 3" min. . . . .	-	-	-	2.10	1.96	1.90	-	-	-	-	-	-
Wash., Spanish type, 3" & lgr. . . . .	-	-	-	-	-	-	-	-	-	2.00	2.10	-
<u>Peas, Green</u>												
New York:												
Bushel basket--												
Calif., . . . . .	-	-	-	3.98	4.06	3.08	-	-	-	4.56	5.00	-
Colo. . . . .	-	-	-	-	-	-	-	3.42	5.25	-	-	-
Idaho . . . . .	-	-	-	-	-	4.25	4.19	3.75	-	-	-	-
Mexico . . . . .	5.56	5.12	4.99	4.29	-	-	-	-	-	-	-	-
Chicago:												
Bushel basket--												
Calif., . . . . .	-	-	-	3.66	4.06	3.15	-	-	5.32	4.22	3.30	-
Colo., . . . . .	-	-	-	-	-	4.00	4.10	3.06	3.25	-	-	-
Idaho . . . . .	-	-	-	-	-	-	3.75	-	-	-	-	-
New Mexico . . . . .	-	-	-	-	-	-	3.32	-	-	-	-	-
Mexico . . . . .	4.08	-	5.08	-	-	-	-	-	-	-	-	-
<u>Peppers, Green</u>												
New York:												
Bushel basket--												
Fla., Calif. Wonder type . . . . .	2.90	4.37	4.80	5.20	3.22	3.15	-	-	-	-	3.68	3.32
N. J., " " " " . . . . .	-	-	-	-	-	-	2.72	2.41	1.86	1.43	1.06	-
N. C., " " " " . . . . .	-	-	-	-	-	-	1.51	-	-	-	-	-
Texas, " " " " . . . . .	2.75	-	-	-	-	-	-	-	-	-	3.49	2.89
Va., " " " " . . . . .	-	-	-	-	-	-	-	-	-	2.14	2.25	-
Chicago:												
Bushel basket--												
Colo., Calif. Wonder type . . . . .	-	-	-	-	-	-	-	-	2.88	-	-	-
Fla., " " " " . . . . .	3.25	5.06	4.90	4.94	3.50	4.38	-	-	-	-	-	3.81
Ill., " " " " . . . . .	-	-	-	-	-	-	3.30	2.88	2.17	-	-	-
Ia., " " " " . . . . .	-	-	-	-	-	2.42	1.96	-	-	-	-	-
Texas, " " " " . . . . .	2.92	-	-	-	-	-	-	-	-	-	3.38	2.84
Calif., Calif. Wonder, 35-40-lb. crate . . . . .	-	-	-	-	-	-	-	-	6.00	5.45	4.91	-



Table 1.—Continued

VEGETABLES—CONTINUED

Market, Origin, and description	Jan.	Feb.	Mar.	Apr.	May	June	July	Aug.	Sept.	Oct.	Nov.	Dec.
	Dol.	Dol.	Dol.	Dol.	Dol.	Dol.	Dol.	Dol.	Dol.	Dol.	Dol.	Dol.
<u>Potatoes, White</u>												
<u>New York:</u>												
U. S. No. 1, Size A, 50-lb. sack												
Calif., Long White, washed	-	-	-	-	-	2.61	2.25	-	-	-	-	-
Fla., Round Red, washed	-	2.82	2.69	3.75	-	-	-	-	-	-	-	-
Fla., Sebago, washed	-	-	-	4.12	2.98	2.37	-	-	-	-	-	-
Idaho, Long White, washed	-	-	-	-	-	-	-	2.18	1.87	-	-	-
Idaho, Russet Burbank, washed/5	-	-	-	3.55	3.80	-	-	-	2.26	2.16	2.20	2.23
L. I., Gobbler, unwashed	-	-	-	-	-	-	.88	.79	.68	-	-	-
L. I., Katahdin, unwashed	-	-	-	-	-	-	-	-	.72	.74	.91	.91
Maine, Katahdin, unwashed/5	-	-	-	2.71	2.46	1.90	-	-	-	-	-	-
Maine, Katahdin, unwashed/7	-	-	-	-	-	-	-	-	-	-	1.14	1.16
U. S. No. 1, Size A, 100-lb. sack												
Calif., Long white, washed/5	-	-	-	-	-	-	4.20	4.33	-	-	-	-
Idaho, Russet Burbank, washed	5.23	5.40	5.55	-	-	-	-	-	-	-	-	-
L. I., Katahdin, unwashed	3.02	2.94	-	-	-	-	-	-	-	-	-	-
Maine, Katahdin, unwashed/5	3.07	3.00	2.97	3.62	-	-	-	-	-	-	-	-
<u>Chicago:</u>												
U. S. No. 1, Size A, 50-lb. sack												
Fla., Round Red, washed	-	2.68	2.50	4.19	4.38	-	-	-	-	-	-	-
U. S. No. 1, Size A, 100-lb. sack												
Calif., Long White, washed/6	-	-	-	-	5.05	3.85	3.21	3.73	-	-	-	-
Calif., Round Red, washed/6	-	-	-	-	6.15	4.12	3.06	-	-	-	-	-
Ida. & Oreg., Long White, washed/6	-	-	-	-	-	-	-	3.13	3.00	-	-	-
Ida. & Oreg., Round Red, washed/6	-	-	-	-	-	-	-	2.48	-	-	-	-
Hebr., Round Red, washed/6	-	-	-	-	-	-	-	2.40	-	-	-	-
Wisc., Round Red, washed/6	-	-	-	-	-	-	-	1.70	1.88	2.30	-	-
Midwestern, Round Reds, washed & unwashed/6	2.65	2.69	2.66	4.74	4.32	-	-	-	-	-	-	-
Colo. Red McClure, washed/6	3.48	3.35	-	-	-	-	-	-	-	-	-	-
Ida., Russet Burbank, washed/6	4.54	4.62	4.72	6.21	6.09	4.82	-	-	-	3.32	3.65	3.76
Red River Vly. Pontiacs, washed/6	-	-	-	-	-	-	-	-	-	2.73	2.86	2.86
Wash., Russet Burbank, washed/6	-	-	-	-	-	-	-	-	3.70	3.34	3.70	-
<u>Rhubarb</u>												
<u>New York:</u>												
5-pound carton—												
Mich., extra fancy	-	.82	.96	1.06	-	-	-	-	-	-	-	-
E. J., 1-3/5-bu. box	-	-	-	-	1.39	1.12	-	-	-	-	-	-
<u>Shallots</u>												
<u>New York:</u>												
La., 8-dozen bunches, crats.	4.38	4.21	5.40	6.50	-	-	-	-	-	-	-	-
<u>Chicago:</u>												
La., 8-dozen bunches, crats.	4.00	4.00	4.54	4.83	-	-	-	-	-	-	-	-
<u>Spinach</u>												
<u>New York:</u>												
<u>Savoy type—</u>												
N. J., bushel basket	-	-	-	.88	.69	.55	-	-	-	-	-	-
N. J., 1 1/2-bushel box	-	-	-	-	-	.76	.87	-	-	-	-	-
N. J., 1-3/5-bu. box	-	-	-	-	-	-	-	-	-	1.03	1.55	-
N. Y., 1 1/2-bushel box	-	-	-	-	-	-	2.00	-	-	-	-	-
N. Y., bushel basket	-	-	-	-	-	-	2.25	3.04	3.40	1.87	-	-
S. C., bushel basket	-	1.88	-	-	-	-	-	-	-	-	-	-
Texas, bushel basket	2.65	2.54	2.16	-	-	-	-	-	-	-	-	2.06
Va., bushel basket	1.42	1.18	1.71	1.72	-	-	-	-	-	-	2.02	1.44
<u>Chicago:</u>												
<u>Bushel basket—</u>												
Colo., Flat type, 26-lb. crats.	-	-	-	-	-	-	-	3.90	-	-	-	-
Ill., Flat type	1.58	-	-	1.00	.87	.98	1.50	2.63	2.16	1.09	1.36	-
Mich., Flat type	-	-	-	-	-	-	-	2.09	-	-	-	-
Texas, Flat type	2.22	1.91	2.12	-	-	-	-	-	-	-	1.75	1.68

/5 2-inch minimum    /6 Carlot sales.    /7 2-1/4" minimum.

VEGETABLES--CONTINUED

Market, origin and description	Jan.	Feb.	Mar.	Apr.	May	June	July	Aug.	Sept.	Oct.	Nov.	Dec.
	Dol.	Dol.	Dol.	Dol.	Dol.	Dol.	Dol.	Dol.	Dol.	Dol.	Dol.	Dol.
<u>Sweetpotatoes</u>												
<b>New York:</b>												
<u>Bushel basket--</u>												
Md., Maryland Golden . . . . .	-	-	-	-	-	-	-	-	-	2.08	2.38	2.37
N. J., Golden . . . . .	-	4.23	3.73	3.32	3.37	-	-	-	-	-	-	-
N. J., Jersey type . . . . .	3.08	3.33	-	-	-	-	-	-	-	2.88	3.01	2.84
N. C., Porto Rican . . . . .	4.87	4.96	5.00	4.79	4.69	4.78	4.62	4.12	3.41	3.26	3.73	3.98
Va., Maryland Golden . . . . .	-	-	-	-	-	-	-	2.88	1.78	1.95	2.10	-
<u>50-lb. crate--</u>												
La., Porto Rican . . . . .	-	-	-	-	-	-	-	4.06	3.17	-	-	-
<b>Chicago:</b>												
<u>50-lb. crate--</u>												
Fla., Porto Rican . . . . .	-	-	-	-	-	6.08	5.32	-	-	-	-	-
La., Porto Rican, cured . . . . .	4.89	5.10	5.08	5.11	4.85	5.12	-	-	-	-	-	3.63
La., Porto Rican, uncured . . . . .	-	-	-	-	-	-	4.11	2.84	2.89	2.70	3.02	2.98
Tenn., Porto Rican . . . . .	-	-	-	-	-	-	-	-	-	2.50	3.03	3.25
Texas, Porto Rican . . . . .	-	-	-	-	-	-	-	-	-	2.70	2.75	-
<u>Tomatoes</u>												
<b>New York - Auction average:</b>												
<u>Green, ripe and turning</u>												
Calif., 6 x 6, lug box . . . . .	-	-	-	-	-	-	-	-	-	3.73	5.44	-
Cuba, 6 x 6, lug box . . . . .	4.23	4.14	4.92	-	-	-	-	-	-	-	-	-
Texas, 6 x 6, lug box . . . . .	-	-	-	-	-	3.53	-	-	-	-	-	-
Fla., 6 x 6, unwrapped, 60-lb. crate . . . . .	6.20	6.36	8.95	5.79	7.32	-	-	-	-	-	8.08	4.94
S. O., 6 x 6, 60-lb. crate . . . . .	-	-	-	-	-	7.60	4.54	-	-	-	-	-
<u>Street Sales</u>												
Conn., 16-lb. hamper, ripe . . . . .	-	-	-	-	-	-	-	2.75	-	-	-	-
N. J., 12-qt. basket, " . . . . .	-	-	-	-	-	-	1.44	1.02	-	-	-	-
I. I., 12-qt. basket, " . . . . .	-	-	-	-	-	-	-	1.75	1.60	1.38	-	-
Va., 12-qt. basket, " . . . . .	-	-	-	-	-	-	-	.88	-	-	-	-
<b>Chicago</b>												
<u>Green, ripe and turning--</u>												
Calif., 6 x 6 & lgr., lug box/8 . . . . .	-	-	-	-	-	-	3.87	3.38	4.50	3.60	4.84	-
Fla., 6 x 6 & lgr., 60-lb. crate/8 . . . . .	8.50	8.47	11.40	8.19	8.30	-	-	-	-	-	8.25	6.67
Fla., 6 x 6 & lgr., lug box/8 . . . . .	4.00	-	-	-	-	-	-	-	-	-	5.00	-
Ill., 10-lb. basket, ripe . . . . .	-	-	-	-	-	-	1.00	.74	-	-	-	-
Mich., 10-lb. basket, ripe . . . . .	-	-	-	-	-	-	-	.92	1.09	-	-	-
Texas, 6 x 6 & lgr., lug box/8 . . . . .	-	-	-	-	3.81	4.12	4.36	-	-	-	-	-

/8 85% or more U. S. No. 1.

Table 2.—Auction prices of specified citrus and deciduous fruits in New York City and Chicago, each month, by market, origin, and description, 1955. Weighted average, all grades and sizes 1/

CITRUS FRUITS

Market, Origin and description	Jan.	Feb.	Mar.	Apr.	May	June	July	Aug.	Sept.	Oct.	Nov.	Dec.
	Dol.	Dol.	Dol.	Dol.	Dol.	Dol.	Dol.	Dol.	Dol.	Dol.	Dol.	Dol.
<u>Grapefruit</u>												
<u>New York:</u>												
<u>Various Varieties—</u>												
Calif., std. box . . . . .	-	-	-	-	4.25	-	5.72	4.89	5.54	-	-	-
" 1/2 box carton . . . . .	-	-	-	-	-	1.98	2.90	2.94	3.68	2.42	-	-
Fla., 1-3/5 bushel box . . . . .	4.05	3.66	3.48	3.64	3.74	3.86	4.32	3.74	3.05	4.24	4.29	4.17
<u>Chicago:</u>												
<u>Various Varieties—</u>												
Calif., std. box . . . . .	-	-	-	-	-	2.50	4.81	4.85	3.38	-	-	-
" 1/2 box carton . . . . .	-	-	-	-	-	-	2.99	2.60	2.97	-	-	-
Fla., 1-3/5 bushel box . . . . .	4.01	3.75	3.47	3.85	3.59	3.88	3.72	-	-	4.07	4.26	4.48
Texas, 1-3/5 bushel box . . . . .	-	2.54	2.22	-	-	-	-	-	-	-	-	2.95
<u>Lemons</u>												
<u>New York:</u>												
Calif., 1/2 box carton . . . . .	3.56	3.55	3.86	3.68	3.91	3.36	3.66	3.74	3.53	3.08	4.07	3.79
<u>Chicago:</u>												
Calif., 1/2 box carton . . . . .	3.86	3.87	4.07	3.76	3.57	3.59	3.83	3.76	3.22	3.28	4.57	4.62
<u>Oranges</u>												
<u>New York:</u>												
Calif., Navel, std. box . . . . .	5.88	5.81	6.80	7.65	7.73	8.88	-	-	-	-	-	8.30
" " 1/2 box carton . . . . .	2.73	2.60	3.12	3.69	3.56	3.77	-	-	-	-	-	4.26
" Valencia, std. box . . . . .	-	-	-	-	6.24	6.14	5.80	5.22	6.31	5.63	6.49	7.22
" " 1/2 box carton . . . . .	-	-	-	2.69	3.11	3.07	2.90	2.63	3.29	2.82	3.69	3.76
Fla., Var. varie., 1-3/5 bu. box . . . . .	3.95	4.17	4.45	4.40	4.58	5.01	5.42	5.59	5.04	4.07	4.06	4.59
<u>Chicago:</u>												
Ariz., Var. varie., std. box . . . . .	-	-	-	5.52	6.21	-	-	-	-	-	-	-
" " 1/2 box carton . . . . .	2.14	-	-	3.01	2.82	2.47	-	-	-	-	3.98	3.50
Calif., Navel, std. box . . . . .	5.83	5.45	6.46	7.20	7.37	6.57	-	-	-	-	-	8.33
" " 1/2 box carton . . . . .	2.57	2.59	3.08	3.10	3.01	2.77	-	-	-	-	-	4.07
" Valencia, std. box . . . . .	-	-	-	-	6.43	5.87	6.15	5.81	6.84	6.47	7.95	7.64
" " 1/2 box carton . . . . .	-	-	-	3.48	3.17	2.95	2.94	2.58	3.17	2.78	3.66	3.41
Fla., Var. varie., 1-3/5 bu. box . . . . .	3.45	3.79	3.95	4.06	4.33	4.60	5.47	-	-	-	3.66	4.31

DECIDUOUS FRUITS

<u>Apples</u>												
<u>New York:</u>												
<u>Boxes, all grades and sizes—</u>												
Calif., Delicious . . . . .	-	-	-	-	-	-	-	-	-	4.13	-	-
" Golden Delicious . . . . .	-	-	-	-	-	-	-	-	-	4.37	3.86	-
" Gravenstein . . . . .	-	-	-	-	-	-	3.20	4.55	-	-	-	-
Oreg., Delicious 2/ . . . . .	4.01	3.98	3.99	4.08	3.50	-	-	-	5.52	4.53	-	-
" Golden Delicious . . . . .	4.07	4.05	4.28	-	-	-	-	-	-	-	-	4.25
" Yellow Newtown . . . . .	3.65	-	3.88	3.25	3.53	-	-	-	-	-	-	-
Wash., Arkansas Black . . . . .	-	-	-	-	5.82	5.13	-	-	-	-	-	-
" Delicious 2/ . . . . .	5.51	5.70	5.96	5.32	4.28	3.87	3.71	-	-	4.87	4.76	4.94
" Golden Delicious . . . . .	4.59	3.72	4.18	4.17	5.80	4.60	-	-	-	4.88	5.09	4.14
" Pearmain . . . . .	-	-	4.51	3.28	2.97	-	-	-	-	-	-	-
" Rome Beauty . . . . .	3.87	3.72	4.44	3.03	3.11	3.13	-	-	-	3.45	-	3.21
" Winthrop . . . . .	4.93	-	-	-	6.17	6.50	-	-	-	-	-	-
" Yellow Newtown . . . . .	-	-	3.78	2.83	3.73	3.42	2.82	-	-	-	-	-

1/ Compiled by AMS Statistical and Historical Research Branch. 2/ Includes double Red stains.

Table 2.—Continued

DECIDUOUS FRUITS—CONTINUED

Market, origin, and description	Jan.	Feb.	Mar.	Apr.	May	June	July	Aug.	Sept.	Oct.	Nov.	Dec.
	Dol.	Dol.	Dol.	Dol.	Dol.	Dol.	Dol.	Dol.	Dol.	Dol.	Dol.	Dol.
<u>Apples—Continued</u>												
<u>Chicago:</u>												
<u>Boxes, all grades and sizes—</u>												
Calif., Golden Delicious	-	-	-	-	-	-	-	-	3.50	-	-	-
Gravenstein	-	-	-	-	-	-	3.30	3.72	-	-	-	-
Oreg., Delicious 2/	4.17	4.05	4.09	3.95	-	-	-	-	5.56	4.74	-	-
Golden Delicious	3.39	-	-	-	-	-	-	-	-	5.32	-	4.20
Jonathan	-	-	-	-	-	-	-	-	-	3.49	-	-
Wash., Arkansas Black	-	-	-	4.08	4.14	4.33	-	-	-	-	-	-
Delicious 2/	5.30	5.50	5.66	5.33	4.91	4.12	-	-	-	4.72	4.65	4.70
Golden Delicious	4.50	4.59	4.73	4.45	6.00	3.44	-	-	-	5.47	4.98	4.28
Jonathan	3.67	3.39	3.67	-	-	-	-	-	4.71	3.71	3.78	3.29
Pearmain	-	-	3.59	3.14	-	-	-	-	-	-	-	1.50
Rome Beauty	3.90	3.50	3.61	3.79	4.35	3.30	-	-	-	4.45	3.94	3.77
Winesap	4.54	4.48	4.58	4.56	4.60	4.84	4.75	-	-	-	-	-
Yellow Newtown	-	-	3.05	-	3.60	2.13	-	-	-	-	-	-
<u>Apricots</u>												
<u>New York:</u>												
Calif., Royal, lug	-	-	-	-	-	4.43	3.92	-	-	-	-	-
Pilton, lug	-	-	-	-	-	4.98	4.11	-	-	-	-	-
<u>Chicago:</u>												
Calif., Royal, lug	-	-	-	-	-	4.18	3.52	-	-	-	-	-
Pilton, lug	-	-	-	-	-	4.83	3.86	-	-	-	-	-
<u>Cherries</u>												
<u>New York:</u>												
<u>15-pound lug—</u>												
Calif., Bing	-	-	-	-	5.73	6.18	5.76	-	-	-	-	-
Burbank	-	-	-	-	4.86	3.37	-	-	-	-	-	-
Chapman	-	-	-	-	5.43	-	-	-	-	-	-	-
Lambert	-	-	-	-	-	5.39	4.99	-	-	-	-	-
Republican	-	-	-	-	-	4.72	3.74	-	-	-	-	-
Royal Anne	-	-	-	-	-	4.32	-	-	-	-	-	-
Tartarian	-	-	-	-	5.66	4.28	-	-	-	-	-	-
Oreg., Bing	-	-	-	-	-	-	3.66	4.28	-	-	-	-
Lambert	-	-	-	-	-	-	-	4.21	-	-	-	-
Wash., Bing	-	-	-	-	-	-	-	4.68	-	-	-	-
Lambert	-	-	-	-	-	-	-	3.58	-	-	-	-
Republican	-	-	-	-	-	-	2.71	-	-	-	-	-
<u>Chicago:</u>												
<u>15-pound lug—</u>												
Calif., Bing	-	-	-	-	6.82	5.84	5.16	-	-	-	-	-
Burbank	-	-	-	-	2.39	-	-	-	-	-	-	-
Chapman	-	-	-	-	5.03	-	-	-	-	-	-	-
Lambert	-	-	-	-	-	5.45	3.91	-	-	-	-	-
Republican	-	-	-	-	-	4.96	3.72	-	-	-	-	-
Tartarian	-	-	-	-	4.94	4.26	-	-	-	-	-	-
Oreg., Bing	-	-	-	-	-	-	4.36	4.25	-	-	-	-
Lambert	-	-	-	-	-	-	-	6.04	3.97	-	-	-
Wash., Bing	-	-	-	-	-	6.17	3.90	4.82	-	-	-	-
Lambert	-	-	-	-	-	-	3.93	3.75	-	-	-	-
Republican	-	-	-	-	-	-	2.31	-	-	-	-	-

2/ Includes double Red strains.

Table 2.—Continued

DECIDUOUS FRUITS—CONTINUED

Market, origin, and description	Jan.	Feb.	Mar.	Apr.	May	June	July	Aug.	Sept.	Oct.	Nov.	Dec.
	Dol.	Dol.	Dol.	Dol.	Dol.	Dol.	Dol.	Dol.	Dol.	Dol.	Dol.	Dol.
<u>Grapes</u>												
<u>New York:</u>												
<u>Table Stock—lug—</u>												
Calif., Almeria	-	-	-	-	-	-	-	-	-	4.10	3.87	3.33
Black Beauty	-	-	-	-	-	7.15	-	-	-	-	-	-
Black Rose	-	-	-	-	-	-	4.43	3.65	2.26	2.41	2.34	-
Calmeria	-	-	-	-	-	-	-	-	-	-	4.86	5.72
Cardinal	-	-	-	-	-	7.69	4.08	3.08	2.75	-	-	-
Cornichon	-	-	-	-	-	-	-	-	-	2.05	1.83	-
Crystal	-	-	-	-	-	-	-	3.27	-	-	-	-
Emperor	-	-	-	-	-	-	-	-	-	2.69	2.71	2.59
Khandahar	-	-	-	-	-	-	-	5.65	4.70	-	-	-
Lady Finger	-	-	-	-	-	-	-	3.27	2.27	-	-	-
Malaga	-	-	-	-	-	-	5.03	4.33	2.26	2.58	2.65	1.59
Muscat	-	-	-	-	-	-	-	4.91	4.80	3.05	3.97	2.60
Olivette	-	-	-	-	-	-	-	-	4.40	3.05	3.32	-
Perlette	-	-	-	-	-	11.55	5.47	3.92	-	-	-	-
Queen	-	-	-	-	-	-	-	-	2.64	2.49	2.72	-
Red Malaga	-	-	-	-	-	-	-	4.00	2.85	2.64	2.19	-
Ribier	-	-	-	-	-	-	-	5.98	4.95	3.47	4.11	3.95
Thompson Seedless	-	-	-	-	-	9.48	5.13	3.61	3.12	3.32	3.71	1.27
Tokay	-	-	-	-	-	-	-	-	3.09	2.45	2.05	-
<u>Chicago:</u>												
<u>Table Stock—lug—</u>												
Calif., Almeria	-	-	-	-	-	-	-	-	-	3.00	3.41	2.98
Black Rose	-	-	-	-	-	-	-	2.73	3.39	2.70	2.24	-
Calmeria	-	-	-	-	-	-	-	-	-	-	3.80	5.76
Cardinal	-	-	-	-	-	6.95	3.88	3.08	1.90	-	-	-
Cornichon	-	-	-	-	-	-	-	-	-	2.23	1.94	-
Emperor	-	-	-	-	-	-	-	-	-	2.49	2.67	2.59
Khandahar	-	-	-	-	-	-	-	5.15	5.03	-	-	-
Lady Finger	-	-	-	-	-	-	-	-	-	1.75	-	-
Malaga	-	-	-	-	-	-	3.91	-	-	1.95	2.18	-
Muscat	-	-	-	-	-	-	-	4.11	3.00	2.49	3.34	-
Olivette	-	-	-	-	-	-	-	-	4.84	2.79	2.46	-
Perlette	-	-	-	-	-	10.05	3.82	4.30	-	-	-	-
Red Malaga	-	-	-	-	-	-	4.08	2.81	2.75	2.00	-	-
Ribier	-	-	-	-	-	-	6.31	4.68	3.79	2.92	3.67	2.57
Thompson Seedless	-	-	-	-	-	8.44	4.78	3.14	2.83	3.30	2.89	-
Tokay	-	-	-	-	-	-	-	-	2.82	2.25	1.99	-
<u>Nectarines</u>												
<u>New York:</u>												
<u>Crate—</u>												
Calif., Gower	-	-	-	-	-	-	3.41	1.56	-	-	-	-
John River	-	-	-	-	-	5.19	3.80	-	-	-	-	-
Kirkman	-	-	-	-	-	-	3.82	-	-	-	-	-
Quetta	-	-	-	-	-	-	3.88	3.28	3.40	-	-	-
Stanwyck	-	-	-	-	-	-	-	-	-	1.85	-	-
<u>Chicago:</u>												
<u>Crate—</u>												
Calif., Gower	-	-	-	-	-	-	-	2.39	-	-	-	-
Quetta	-	-	-	-	-	-	-	3.00	-	-	-	-
<u>Peaches</u>												
<u>New York:</u>												
<u>Box—</u>												
Calif., Cling	-	-	-	-	-	-	-	1.73	3.65	3.42	-	-
Elberta	-	-	-	-	-	2.77	2.33	1.85	-	-	-	-
Gasm	-	-	-	-	-	-	-	-	1.75	-	-	-
Hale	-	-	-	-	-	-	-	1.71	3.01	-	-	-
Levi Cling	-	-	-	-	-	-	-	-	-	1.81	2.04	-
McBovitt	-	-	-	-	-	-	-	-	3.23	3.49	-	-
Percooca	-	-	-	-	-	-	2.63	1.87	-	-	-	-
Red Bird	-	-	-	-	-	-	-	2.06	-	-	-	-
Rio Oro Gem	-	-	-	-	-	-	-	1.83	-	-	-	-
Wiley	-	-	-	-	-	-	-	1.64	2.93	3.20	-	-
<u>Sanger lug—</u>												
Calif., Elberta	-	-	-	-	-	4.74	3.16	2.15	-	-	-	-
Hale	-	-	-	-	-	-	3.22	2.68	3.37	-	-	-

DECIDUOUS FRUITS—CONTINUED

Market, origin, and description	Jan.	Feb.	Mar.	Apr.	May	June	July	Aug.	Sept.	Oct.	Nov.	Dec.
	Dol.	Dol.	Dol.	Dol.	Dol.	Dol.	Dol.	Dol.	Dol.	Dol.	Dol.	Dol.
<u>Peaches—Continued</u>												
<b>Chicago:</b>												
<u>Box—</u>												
Calif., Elberta . . . . .	-	-	-	-	-	4.06	2.16	1.89	-	-	-	-
Gama . . . . .	-	-	-	-	-	-	-	1.61	-	-	-	-
Hale . . . . .	-	-	-	-	-	-	4.12	3.16	-	-	-	-
Levi Cling . . . . .	-	-	-	-	-	-	-	-	1.98	-	-	-
Redhaven . . . . .	-	-	-	-	-	-	2.18	-	-	-	-	-
Rio Oso Gem . . . . .	-	-	-	-	-	-	-	1.57	3.29	-	-	-
Red Bird . . . . .	-	-	-	-	-	-	2.68	1.89	-	-	-	-
<u>Sanger lug—</u>												
Calif., Hale . . . . .	-	-	-	-	-	-	3.94	2.61	-	-	-	-
Elberta . . . . .	-	-	-	-	-	-	3.11	2.10	-	-	-	-
Redhaven . . . . .	-	-	-	-	-	-	4.29	-	-	-	-	-
<u>Pears</u>												
<b>New York:</b>												
<u>All grades, and sizes, box—</u>												
Calif., Bartlett . . . . .	-	-	-	-	-	-	5.49	5.28	5.45	5.57	4.87	-
Bosc . . . . .	-	-	-	-	-	-	-	-	4.58	3.47	3.34	2.97
Comice . . . . .	5.43	3.83	-	-	-	-	-	-	4.94	4.60	4.60	4.62
D'Anjou . . . . .	-	-	-	-	-	-	-	-	4.15	3.89	4.15	3.83
Forelle . . . . .	-	-	-	-	-	-	-	-	-	4.99	5.00	5.72
Hardy . . . . .	-	-	-	-	-	-	-	-	4.14	4.55	-	-
Seckel . . . . .	-	-	-	-	-	-	-	-	-	5.45	-	-
Winter Nellis . . . . .	3.63	3.19	3.61	3.41	4.33	4.48	-	-	-	-	-	3.18
Oreg., Bartlett . . . . .	-	-	-	-	-	-	-	3.97	4.88	4.37	4.84	3.49
Bosc . . . . .	4.31	3.80	3.89	-	-	-	-	-	-	4.16	4.19	4.60
Bonne Bester . . . . .	-	-	-	-	4.22	4.55	-	-	-	-	-	-
Comice . . . . .	5.35	4.27	3.38	-	-	-	-	-	-	5.02	4.11	4.66
D'Anjou . . . . .	4.49	4.28	4.67	4.59	5.71	-	-	-	-	4.58	4.69	4.76
Forelle . . . . .	8.52	9.77	-	-	-	-	-	-	-	-	6.10	5.65
Peachum Triumph . . . . .	-	4.22	6.05	-	-	-	-	-	-	-	-	-
P. Barry . . . . .	-	-	-	-	3.81	3.48	3.65	-	-	-	-	-
Seckel . . . . .	-	-	-	-	-	-	-	-	7.50	7.81	6.23	-
Winter Nellis . . . . .	3.77	-	-	-	4.96	3.67	-	-	-	-	-	-
Wash., Bartlett . . . . .	-	-	-	-	-	-	-	-	4.10	3.63	-	2.30
Bosc . . . . .	2.76	-	2.67	-	-	-	-	-	-	2.79	3.52	3.44
Comice . . . . .	-	-	-	-	-	-	-	-	-	4.07	-	-
D'Anjou . . . . .	4.61	3.98	4.19	4.13	6.29	3.16	-	-	4.56	4.37	4.55	4.07
Flemish Beauty . . . . .	-	-	-	-	-	-	-	-	3.83	3.07	3.14	2.87
Seckel . . . . .	-	-	-	-	-	-	-	-	-	5.31	5.01	-
Winter Nellis . . . . .	-	-	2.26	2.58	-	-	-	-	-	-	-	-
<b>CHICAGO:</b>												
<u>All grades, and sizes, box—</u>												
Calif., Bartlett . . . . .	-	-	-	-	-	-	5.28	5.19	5.46	5.91	6.26	3.12
Bosc . . . . .	-	-	-	-	-	-	-	-	4.01	3.66	4.09	4.20
Winter Nellis . . . . .	-	1.94	-	-	-	-	-	-	-	-	-	-
Oreg., Bartlett . . . . .	-	-	-	-	-	-	-	3.95	4.68	4.91	5.04	-
Bosc . . . . .	3.49	2.46	-	-	-	-	-	-	-	3.88	3.75	4.26
Comice . . . . .	1.35	-	-	-	-	-	-	-	-	-	-	3.33
D'Anjou . . . . .	4.74	4.48	3.65	3.15	-	-	-	-	-	4.22	4.46	4.25
P. Barry . . . . .	-	-	-	-	-	5.83	-	-	-	-	-	-
Wash., Bartlett . . . . .	-	-	-	-	-	-	-	-	3.96	3.93	-	-
Bosc . . . . .	3.16	-	2.25	-	-	-	-	-	-	2.58	3.04	3.09
D'Anjou . . . . .	4.57	4.56	4.85	5.35	6.93	-	-	-	-	4.25	4.36	4.27
Flemish Beauty . . . . .	-	-	-	-	-	-	-	-	-	3.05	3.05	2.73
<u>Pineapples</u>												
<b>New York:</b>												
Puerto Rico, all sizes, crate . . . . .	6.34	4.44	5.25	4.53	5.04	4.83	3.65	3.96	4.88	6.90	4.97	4.29

Table 2.—Continued

DECIDUOUS FRUITS—CONTINUED

Market, origin, and description	Jan.	Feb.	Mar.	Apr.	May	June	July	Aug.	Sept.	Oct.	Nov.	Dec.
	Dol.	Dol.	Dol.	Dol.	Dol.	Dol.	Dol.	Dol.	Dol.	Dol.	Dol.	Dol.
<u>Plums</u>												
<u>New York:</u>												
<u>All sizes, crate—</u>												
Calif., Beauty . . . . .	-	-	-	-	10.02	4.76	3.58	-	-	-	-	-
Becky Smith . . . . .	-	-	-	-	-	-	3.58	2.62	-	-	-	-
Burbank . . . . .	-	-	-	-	-	-	3.12	2.04	-	-	-	-
Duarte . . . . .	-	-	-	-	-	-	3.71	2.70	-	-	-	-
Eldorado . . . . .	-	-	-	-	-	-	5.79	4.25	-	-	-	-
Formosa . . . . .	-	-	-	-	-	4.17	3.94	-	-	-	-	-
Gaviota . . . . .	-	-	-	-	-	-	2.69	2.26	-	-	-	-
Giant . . . . .	-	-	-	-	-	-	-	2.43	2.39	-	-	-
Kelsey . . . . .	-	-	-	-	-	-	-	3.89	4.32	2.79	-	-
Late Duarte . . . . .	-	-	-	-	-	-	-	3.62	2.82	-	-	-
" Santa Rosa . . . . .	-	-	-	-	-	-	-	3.69	2.82	-	-	-
" Tragedy . . . . .	-	-	-	-	-	-	4.74	4.17	1.53	-	-	-
President . . . . .	-	-	-	-	-	-	-	-	-	2.85	-	-
Santa Rosa . . . . .	-	-	-	-	-	6.03	4.78	4.55	-	-	-	-
Sharkey . . . . .	-	-	-	-	-	-	-	2.39	3.16	2.02	-	-
Sugar . . . . .	-	-	-	-	-	-	-	3.39	2.52	-	-	-
Tragedy . . . . .	-	-	-	-	-	-	-	4.88	3.27	-	-	-
Wickson . . . . .	-	-	-	-	-	-	-	3.57	2.62	1.22	-	-
<u>Chicago:</u>												
<u>All sizes, crate—</u>												
Calif., Beauty . . . . .	-	-	-	-	8.17	4.47	3.32	-	-	-	-	-
Becky Smith . . . . .	-	-	-	-	-	-	3.38	3.00	-	-	-	-
Burbank . . . . .	-	-	-	-	-	-	3.07	2.27	-	-	-	-
Duarte . . . . .	-	-	-	-	-	-	3.80	2.91	-	-	-	-
Eldorado . . . . .	-	-	-	-	-	-	5.66	4.28	-	-	-	-
Formosa . . . . .	-	-	-	-	-	3.58	3.94	-	-	-	-	-
Gaviota . . . . .	-	-	-	-	-	-	2.58	2.48	-	-	-	-
Giant . . . . .	-	-	-	-	-	-	-	2.64	2.76	-	-	-
Kelsey . . . . .	-	-	-	-	-	-	-	4.15	3.76	-	-	-
Late Duarte . . . . .	-	-	-	-	-	-	-	3.28	2.87	-	-	-
" Santa Rosa . . . . .	-	-	-	-	-	-	-	3.95	3.25	-	-	-
" Tragedy . . . . .	-	-	-	-	-	-	5.74	4.39	-	-	-	-
President . . . . .	-	-	-	-	-	-	-	3.43	2.92	-	-	-
Santa Rosa . . . . .	-	-	-	-	-	5.40	4.43	3.33	-	-	-	-
Sharkey . . . . .	-	-	-	-	-	-	-	2.92	.89	-	-	-
Sugar . . . . .	-	-	-	-	-	-	-	2.80	2.72	-	-	-
Tragedy . . . . .	-	-	-	-	-	-	-	3.79	4.40	-	-	-
Wickson . . . . .	-	-	-	-	-	-	-	3.65	2.97	-	-	-
<u>Prunes, Fresh</u>												
<u>New York:</u>												
<u>1/2-bushel basket, Italian 3/</u>												
Idaho . . . . .	-	-	-	-	-	-	-	-	2.26	3.04	3.46	-
Oreg. . . . .	-	-	-	-	-	-	-	4.28	2.35	2.31	-	-
Wash. . . . .	-	-	-	-	-	-	-	3.38	1.94	-	-	-
<u>Chicago:</u>												
<u>1/2-bushel basket, Italian 3/</u>												
Idaho . . . . .	-	-	-	-	-	-	-	-	2.10	2.35	-	-
Oreg. . . . .	-	-	-	-	-	-	-	2.41	2.26	2.16	-	-
Wash. . . . .	-	-	-	-	-	-	-	2.52	2.01	2.36	-	-

3/ Includes Demaris and Weatherspoon Varieties.

Table 3.—Average prices of specified fruits and vegetables at leading shipping points, each month by description of sale, 1955

(Shipping point prices in this table are simple averages of the mid-points of the daily range and are only for months during which market news stations were in operation in the specified districts.)

BERRIES

Shipping point and description of sale	Jan.	Feb.	Mar.	Apr.	May	June	July	Aug.	Sept.	Oct.	Nov.	Dec.
	Dol.	Dol.	Dol.	Dol.	Dol.	Dol.	Dol.	Dol.	Dol.	Dol.	Dol.	Dol.
<u>Blueberries</u>												
<u>Michigan:</u>												
<u>Benton Harbor</u>												
<u>Cash market growers' sales--</u>												
<u>Cultivated—film wrapped</u>												
12 pint crate . . . . .	-	-	-	-	-	-	3.21	2.97	3.13	-	-	-
<u>Cultivated—unwrapped</u>												
16 pint crate . . . . .	-	-	-	-	-	-	4.13	3.58	-	-	-	-
<u>Raspberries</u>												
<u>Michigan:</u>												
<u>Benton Harbor</u>												
<u>Cash market growers' sales--</u>												
Black, 24-pint crate . . . . .	-	-	-	-	-	5.29	5.03	-	-	-	-	-
Red, 24-pint crate . . . . .	-	-	-	-	-	9.42	5.41	-	-	-	-	-
<u>Strawberries</u>												
<u>Arkansas:</u>												
<u>Price to growers--</u>												
<u>24-quart crate--</u>												
<u>Bald Knob Area</u>												
Blakemore, U. S. No. 1 . . . . .	-	-	-	-	8.15	-	-	-	-	-	-	-
Blakemore, U. S. combination . . . . .	-	-	-	-	7.34	-	-	-	-	-	-	-
Blakemore, U. S. No. 2 . . . . .	-	-	-	-	6.20	-	-	-	-	-	-	-
<u>Marshall Area</u>												
Blakemore, U. S. No. 1 . . . . .	-	-	-	-	9.17	-	-	-	-	-	-	-
<u>Northwest Area</u>												
Blakemore, ungraded . . . . .	-	-	-	-	8.88	-	-	-	-	-	-	-
<u>California:</u>												
<u>Central Points</u>												
<u>Sales f. o. b. shipping point, including loading, bracing, precooling and dry ice--</u>												
<u>University Varieties,</u>												
12-pint tray . . . . .	-	-	-	-	3.26	3.28	3.16	-	-	-	-	-
<u>Florida:</u>												
<u>Auction sales—price to growers--</u>												
<u>Dover</u>												
Missionary & No. 90, per pint. . . . .	.36	.28	.21	-	-	-	-	-	-	-	-	-
<u>Plant City</u>												
Missionary & No. 90, per pint. . . . .	.35	.28	.21	.24	-	-	-	-	-	-	-	-
<u>Starke</u>												
Missionary, 36-pint crate. . . . .	-	-	9.19	9.95	-	-	-	-	-	-	-	-
<u>Louisiana:</u>												
<u>Hammond</u>												
<u>Carlot auction sales—weighted average--</u>												
<u>Klondike and Klomore,</u>												
24-pint crate. . . . .	-	-	6.32	7.66	5.98	-	-	-	-	-	-	-
<u>Michigan:</u>												
<u>Benton Harbor</u>												
<u>Cash market growers' sales--</u>												
<u>Premier and Various varieties,</u>												
Med.-lgs., 16-quart crate. . . . .	-	-	-	-	-	5.58	-	-	-	-	-	-



Table 3.—Continued

BERRIES—CONTINUED

Shipping point and description of sale	Jan.	Feb.	Mar.	Apr.	May	June	July	Aug.	Sept.	Oct.	Nov.	Dec.
	Dol.	Dol.	Dol.	Dol.	Dol.	Dol.	Dol.	Dol.	Dol.	Dol.	Dol.	Dol.
<u>Strawberries—Continued</u>												
<u>North Carolina:</u>												
<u>Auction price to growers—</u>												
<u>Various Varieties, 24-qt. crate</u>												
Chadbourn . . . . .	-	-	-	-	10.76	-	-	-	-	-	-	-
Fabor City . . . . .	-	-	-	-	10.84	-	-	-	-	-	-	-
Wallace . . . . .	-	-	-	-	6.25	-	-	-	-	-	-	-
<u>Virginia:</u>												
<u>Auction Sales—price to growers—</u>												
<u>Bayview</u>												
Blakemore, 24-qt. crate . . . . .	-	-	-	-	10.97	-	-	-	-	-	-	-
<u>East Shore of Virginia</u>												
<u>Various Varieties, 24-qt. crate.</u>												
Hopeton . . . . .	-	-	-	-	9.08	-	-	-	-	-	-	-
Blakemore, 24-qt. crate . . . . .	-	-	-	-	7.19	-	-	-	-	-	-	-
<u>OakHall</u>												
<u>Various Varieties—</u>												
24-qt. crate . . . . .	-	-	-	-	7.50	-	-	-	-	-	-	-
16-qt. crate . . . . .	-	-	-	-	7.62	-	-	-	-	-	-	-
<u>Onley</u>												
<u>Various Varieties—</u>												
24-qt. crate . . . . .	-	-	-	-	8.25	-	-	-	-	-	-	-

OTHER FRUITS

Apples

<u>Michigan:</u>												
<u>Benton Harbor</u>												
<u>Cash market growers' sales—</u>												
<u>U. S. No. 1, bushel basket—</u>												
Chenango, 2½-in. up . . . . .	-	-	-	-	-	-	-	4.41	-	-	-	-
Cortland, 2½-in. up . . . . .	-	-	-	-	-	-	-	-	2.64	1.82	-	-
Delicious, 2½-in. up . . . . .	-	-	-	-	-	-	-	-	3.27	2.69	-	-
Duchess, 2½-in. up . . . . .	-	-	-	-	-	-	2.87	2.02	-	-	-	-
Golden Delicious, 2½-in. up . . . . .	-	-	-	-	-	-	-	-	3.18	2.90	-	-
Grimes Golden, 2½-in. up . . . . .	-	-	-	-	-	-	-	-	2.24	1.89	-	-
Jonathan, 2½-in. up . . . . .	-	-	-	-	-	-	-	-	3.02	2.18	-	-
Jonathan, 2½-in. up . . . . .	-	-	-	-	-	-	-	-	2.76	2.42	-	-
Maiden Blush, 2½-in. up . . . . .	-	-	-	-	-	-	-	3.14	2.88	-	-	-
McIntosh, 2½-in. up . . . . .	-	-	-	-	-	-	-	3.28	2.21	-	-	-
McIntosh, 2½-in. up . . . . .	-	-	-	-	-	-	-	-	2.08	2.09	-	-
Red Delicious, 2½-in. up . . . . .	-	-	-	-	-	-	-	-	4.59	3.27	-	-
Red Stayman, 2½-in. up . . . . .	-	-	-	-	-	-	-	-	-	2.50	-	-
Rhode Is. Greening, 2½-in. up . . . . .	-	-	-	-	-	-	-	-	2.24	-	-	-
Stayman, 2½-in. up . . . . .	-	-	-	-	-	-	-	-	2.26	-	-	-
Transparent, 2-in. up . . . . .	-	-	-	-	-	-	2.74	2.15	-	-	-	-
Transparent, 2½-in. up . . . . .	-	-	-	-	-	-	3.18	-	-	-	-	-
Wealthy, 2½-in. up . . . . .	-	-	-	-	-	-	-	2.66	2.20	-	-	-
Williams Red, 2½-in. up . . . . .	-	-	-	-	-	-	-	4.95	-	-	-	-
<u>West Michigan Points</u>												
<u>Sales f.o.b. shipping point—</u>												
<u>U. S. No. 1, bushel basket—</u>												
Delicious, 2½-in. up . . . . .	-	-	-	-	-	-	-	-	3.31	2.72	2.80	2.97
Golden Delicious, 2½-in. up . . . . .	-	-	-	-	-	-	-	-	-	2.76	-	-
Grimes Golden, 2½-in. up . . . . .	-	-	-	-	-	-	-	-	2.24	2.10	-	-
Jonathan, 2½-in. up . . . . .	-	-	-	-	-	-	-	-	2.78	-	-	-
Jonathan, 2½-in. up . . . . .	-	-	-	-	-	-	-	-	2.94	2.46	2.59	2.64
Jonathan, 2½-in. up . . . . .	2.88	-	-	-	-	-	-	-	2.21	2.07	2.19	-
McIntosh, 2½-in. up . . . . .	-	-	-	-	-	-	-	-	2.15	-	-	-
McIntosh, 2½-in. up . . . . .	-	-	-	-	-	-	-	-	4.74	3.44	-	-
Red Delicious, 2½-in. up . . . . .	-	-	-	-	-	-	-	-	-	2.74	2.81	-
Red Rome, 2½-in. up . . . . .	-	-	-	-	-	-	-	-	-	2.64	2.85	-
Red Stayman, 2½-in. up . . . . .	-	-	-	-	-	-	-	-	-	-	2.81	-
Turley, 2½-in. up . . . . .	-	-	-	-	-	-	-	-	-	-	-	-

Table 3.--Continued

OTHER FRUITS--CONTINUED

Shipping point and description of sale	Jan.	Feb.	Mar.	Apr.	May	June	July	Aug.	Sept.	Oct.	Nov.	Dec.
	Dol.	Dol.	Dol.	Dol.	Dol.	Dol.	Dol.	Dol.	Dol.	Dol.	Dol.	Dol.
<u>Apples--Continued</u>												
<u>Michigan--Continued</u>												
<u>Benton Harbor--Continued</u>												
<u>West Michigan Points</u>												
<u>Sales f.o.b. shipping point--</u>												
<u>U. S. No. 1, bushel carton--</u>												
Delicious, 2½-in. up . . . . .	3.46	3.43	3.58	-	-	-	-	-	-	-	-	2.99
Golden Delicious, 2½-in. up . . . . .	3.58	3.53	-	-	-	-	-	-	-	-	-	-
Jonathan, 2½-in. up . . . . .	-	2.93	2.84	-	-	-	-	-	-	-	2.42	2.61
McIntosh, 2½-in. up . . . . .	2.81	-	2.70	-	-	-	-	-	-	-	-	-
Northern Spy, 2½-in. up . . . . .	2.53	2.48	2.42	-	-	-	-	-	-	-	-	-
Red Delicious, 2½-in. up . . . . .	4.14	-	-	-	-	-	-	-	-	-	-	-
Red Rome, 2½-in. up . . . . .	3.59	3.12	-	-	-	-	-	-	-	-	-	-
Stayman, 2½-in. up . . . . .	-	2.84	-	-	-	-	-	-	-	-	-	-
<u>New York</u>												
<u>Rochester, Western &amp; Central Points:</u>												
<u>Sales f.o.b. shipping point and</u>												
<u>delivered sales shipping point basis--</u>												
<u>U. S. No. 1, 12 3-lb. plastic bag--</u>												
Cortland, 2½-in. up . . . . .	2.77	-	-	-	-	-	-	-	-	-	-	-
Delicious, 2½-in. up . . . . .	-	-	-	3.75	-	-	-	-	-	-	-	-
McIntosh, 2½-in. up . . . . .	2.75	2.75	2.71	3.20	-	-	-	2.25	2.48	2.48	2.50	-
Red Delicious, 2½-in. up . . . . .	-	-	3.74	3.78	-	-	-	-	3.49	-	-	3.75
Red Rome, 2½-in. up . . . . .	3.19	-	3.33	-	-	-	-	-	-	-	-	2.39
Rome Beauty, 2½-in. up . . . . .	-	-	3.30	3.49	-	-	-	-	-	-	-	-
<u>U. S. No. 1, 8 5-lb. plastic bag--</u>												
Cortland, 2½-in. up . . . . .	-	-	-	-	-	-	-	2.25	2.21	2.25	2.25	-
McIntosh, 2½-in. up . . . . .	2.80	-	2.40	-	-	-	-	-	2.50	2.50	2.50	-
Rome Beauty, 2½-in. up . . . . .	-	3.10	3.11	-	-	-	-	-	-	-	-	-
Stayman, 2½-in. up . . . . .	2.56	-	-	-	-	-	-	-	-	-	-	-
<u>Appalachian area of Virginia,</u>												
<u>West Virginia, Maryland and</u>												
<u>Pennsylvania:</u>												
<u>Martinsburg, W. Va., and</u>												
<u>Winchester, Va. Section:</u>												
<u>Sales f.o.b. shipping point--</u>												
<u>U. S. Fancy, bushel basket--</u>												
Delicious, 2½-in. up . . . . .	3.08	2.89	2.79	-	-	-	-	3.45	3.43	-	-	-
Golden Delicious, 2½-in. up . . . . .	3.25	2.86	2.82	-	-	-	-	-	3.30	3.22	3.17	-
Jonathan, 2½-in. up . . . . .	-	-	-	-	-	-	-	3.31	-	-	-	-
Red Delicious, 2½-in. up . . . . .	3.22	2.97	-	-	-	-	-	4.22	3.72	3.46	-	-
Red Rome, 2½-in. up . . . . .	3.09	-	-	-	-	-	-	-	-	3.00	3.00	-
Red Stayman, 2½-in. up . . . . .	-	-	-	-	-	-	-	-	3.15	3.19	3.07	-
Red York, 2½-in. up . . . . .	-	-	-	-	-	-	-	-	2.94	3.08	3.19	-
Rome Beauty, 2½-in. up . . . . .	-	2.74	2.79	-	-	-	-	-	-	-	-	-
Stayman, 2½-in. up . . . . .	2.93	-	-	-	-	-	-	-	-	3.19	-	-
Winesap, 2½-in. up . . . . .	3.51	3.51	3.47	-	-	-	-	-	-	-	-	3.99
York Imperial, 2½-in. up . . . . .	2.64	2.37	-	-	-	-	-	-	-	-	-	-
<u>U. S. No. 1, bushel basket--</u>												
Black twig, 2½-in. up . . . . .	-	-	2.00	-	-	-	-	-	-	-	-	-
Delicious, 2½-in. up . . . . .	2.89	2.96	2.77	-	-	-	-	-	-	-	-	-
Golden Delicious, 2½-in. up . . . . .	-	-	2.79	-	-	-	-	-	-	3.10	3.04	-
Grimes Golden, 2½-in. up . . . . .	-	-	-	-	-	-	-	2.66	2.58	-	-	-
Red Rome, 2½-in. up . . . . .	3.22	2.93	-	-	-	-	-	-	-	-	-	-
Red Stayman, 2½-in. up . . . . .	-	-	-	-	-	-	-	-	-	2.75	-	-
Rome Beauty, 2½-in. up . . . . .	2.90	2.65	-	-	-	-	-	-	-	-	-	-
Stayman Winesap, 2½-in. up . . . . .	-	-	2.03	-	-	-	-	-	-	-	-	-
Winesap, 2½-in. up . . . . .	-	-	3.32	-	-	-	-	-	-	-	-	-
York Imperial, 2½-in. up . . . . .	2.50	2.43	-	-	-	-	-	-	-	-	-	-

Table 3.—Continued

OTHER FRUITS—CONTINUED

Shipping point and description of sale	Jan.	Feb.	Mar.	Apr.	May	June	July	Aug.	Sept.	Oct.	Nov.	Dec.
	Dol.	Dol.	Dol.	Dol.	Dol.	Dol.	Dol.	Dol.	Dol.	Dol.	Dol.	Dol.
<u>Apples—Continued</u>												
<u>Appalachian area of Virginia, West Virginia, Maryland and Pennsylvania—Continued</u>												
<u>Martinsburg, W. Va., and Winchester, Va. Section:</u>												
<u>Sales f.o.b. shipping point—Cont'd.</u>												
<u>U. S. Fancy, 1½'s &amp; 1gr.—W. W. Box</u>												
Delicious . . . . .	-	-	-	-	-	-	-	-	-	3.56	3.67	-
Golden Delicious . . . . .	3.82	3.38	3.12	-	-	-	-	-	-	4.00	4.00	4.00
Red Delicious . . . . .	-	-	-	-	-	-	-	-	-	4.04	4.00	-
Red Rome . . . . .	3.64	3.54	3.65	-	-	-	-	-	-	3.18	3.20	3.25
Red Staymaz . . . . .	3.42	-	-	-	-	-	-	-	-	3.29	3.17	-
Red York . . . . .	3.23	2.91	2.58	-	-	-	-	-	-	3.25	3.25	3.25
Rome Beauty . . . . .	3.42	3.10	-	-	-	-	-	-	-	-	-	-
Staymaz . . . . .	3.61	-	-	-	-	-	-	-	-	-	-	-
Winesap . . . . .	4.05	4.24	-	-	-	-	-	-	-	-	3.96	4.17
York Imperial . . . . .	2.78	2.59	-	-	-	-	-	-	-	-	-	-
<u>Roanoke Section, Virginia</u>												
<u>U. S. Fancy—Various sizes—W. W. Box—</u>												
Red Delicious . . . . .	-	-	-	-	-	-	-	-	4.81	4.14	-	-
<u>Southern Pennsylvania Section:</u>												
<u>U. S. Fancy - bushel basket—</u>												
Delicious, 2½-in. up . . . . .	-	-	-	-	-	-	-	-	-	3.18	-	-
Red Delicious, 2½-in. up . . . . .	-	-	-	-	-	-	-	-	4.15	3.73	-	-
<u>U. S. Fancy—1½'s &amp; 1gr.—W. W. Box—</u>												
Red Delicious . . . . .	-	-	-	-	-	-	-	-	4.50	3.85	-	-
Red York . . . . .	-	-	-	-	-	-	-	-	-	3.12	-	-
<u>Washington:</u>												
<u>Yakima Valley:</u>												
<u>Sales f.o.b. shipping point—</u>												
<u>Extra Fancy—16½'s &amp; 1gr.—</u>												
<u>Wrapped box:</u>												
Delicious . . . . .	4.26	4.48	4.83	5.00	-	-	-	-	-	3.29	3.40	3.29
Jonathan . . . . .	-	-	-	-	-	-	-	-	3.68	2.76	2.79	-
Red Delicious . . . . .	5.25	5.37	5.66	5.44	5.15	-	-	-	4.38	3.96	4.19	4.29
Red Rome . . . . .	-	-	-	-	-	-	-	-	-	-	4.08	4.18
Rome Beauty . . . . .	3.36	3.39	3.76	-	-	-	-	-	-	-	-	-
Winesap . . . . .	4.09	4.13	4.25	4.29	4.27	4.59	-	-	-	-	3.46	3.46
Yellow Newton . . . . .	-	-	-	3.80	-	-	-	-	-	-	-	-
<u>Apricots</u>												
<u>Washington:</u>												
<u>Yakima Valley:</u>												
<u>Sales f.o.b. shipping point—</u>												
Woorpark, 12-lb. lug . . . . .	-	-	-	-	-	-	2.00	.78	-	-	-	-
<u>Cherries</u>												
<u>Washington:</u>												
<u>Yakima Valley:</u>												
<u>Sales f.o.b. shipping point—</u>												
Bing, 15-lb. lug, 12-row . . . . .	-	-	-	-	-	4.25	3.28	-	-	-	-	-
" " " 11-row . . . . .	-	-	-	-	-	4.50	4.00	-	-	-	-	-
" " " 20-lb. loose . . . . .	-	-	-	-	-	5.17	4.47	-	-	-	-	-
<u>Grapes</u>												
<u>California:</u>												
<u>Fresno &amp; Central Calif. Points:</u>												
<u>Sales f.o.b. shipping point—</u>												
<u>U. S. No. 1, 28-lb. lug:</u>												
Almeria . . . . .	-	-	-	-	-	-	-	-	-	-	2.84	-
Emperor . . . . .	2.94	3.37	-	-	-	-	-	-	-	1.71	1.73	1.61
Red Malaga . . . . .	-	-	-	-	-	-	-	1.88	1.80	-	-	-
Ribier . . . . .	-	-	-	-	-	-	-	2.82	2.48	2.26	-	-
Thompson Seedless . . . . .	-	-	-	-	-	-	-	1.81	1.83	2.31	-	-

Table J.—Continued

OTHER FRUITS—CONTINUED

Shipping point and description of sale	Jan.	Feb.	Mar.	Apr.	May	June	July	Aug.	Sept.	Oct.	Nov.	Dec.
	Dol.	Dol.	Dol.	Dol.	Dol.	Dol.	Dol.	Dol.	Dol.	Dol.	Dol.	Dol.
<u>Grapes—Continued</u>												
<u>California:—Continued</u>												
<u>Bakersfield &amp; Kern Co. Points:</u>												
<u>Sales f.o.b. shipping point—</u>												
<u>and sales to local buyers—</u>												
<u>U. S. No. 1, 28-lb. lug:</u>												
Red Malaga . . . . .	-	-	-	-	-	-	2.96	2.14	-	-	-	-
Ribier. . . . .	-	-	-	-	-	-	-	3.26	-	-	-	-
Thompson Seedless . . . . .	-	-	-	-	-	-	3.79	2.26	-	-	-	-
<u>Lodi District:</u>												
<u>Sales f.o.b. shipping point—</u>												
<u>U. S. No. 1, 28-lb. lug:</u>												
Tokay . . . . .	-	-	-	-	-	-	-	-	1.54	1.44	1.65	-
<u>Michigan:</u>												
<u>Benton Harbor:</u>												
<u>Cash market growers' sales—</u>												
<u>Concord:</u>												
Fry. table, 8 2-qt. bakt. crt.	-	-	-	-	-	-	-	-	3.34	3.25	-	-
Fry. table, 4-qt. bakt. . . . .	-	-	-	-	-	-	-	-	.60	-	-	-
No. 1, 12-qt. bakt. . . . .	-	-	-	-	-	-	-	-	1.38	-	-	-
No. 2, 12-qt. bakt. . . . .	-	-	-	-	-	-	-	-	1.24	1.16	-	-
<u>Nectarines</u>												
<u>California:</u>												
<u>San Joaquin Valley Points:</u>												
<u>Sales f.o.b. shipping point—</u>												
<u>John River, 4-basket crate—</u>												
4 x 4's . . . . .	-	-	-	-	-	3.69	-	-	-	-	-	-
4 x 5's . . . . .	-	-	-	-	-	3.00	-	-	-	-	-	-
<u>Gower, 4-basket crate—</u>												
4 x 4's . . . . .	-	-	-	-	-	-	2.58	-	-	-	-	-
4 x 5's . . . . .	-	-	-	-	-	-	2.08	-	-	-	-	-
<u>LeGrandes, cup-pack,</u>												
22-lb. lug, 70's . . . . .	-	-	-	-	-	-	4.14	3.56	-	-	-	-
<u>Peaches 1/</u>												
<u>California:</u>												
<u>San Joaquin Valley Points—</u>												
<u>Sales f.o.b. shipping point—</u>												
<u>U. S. No. 1, wrapped,</u>												
Early Elberta, 75's & lgr. box	-	-	-	-	-	-	1.51	-	-	-	-	-
"    "    22-lb. lug, cup pack,	-	-	-	-	-	-	-	-	-	-	-	-
"    "    70's and lgr. . . . .	-	-	-	-	-	-	2.62	-	-	-	-	-
"    "    60's and lgr. . . . .	-	-	-	-	-	-	2.55	-	-	-	-	-
Elberta, 75's & lgr. box . . . . .	-	-	-	-	-	-	1.25	1.28	-	-	-	-
Red Haven, 75's & lgr. . . . .	-	-	-	-	-	-	2.34	-	-	-	-	-
"    "    22-lb. lug, cup-pack .	-	-	-	-	-	-	-	-	-	-	-	-
"    "    70's & lgr. . . . .	-	-	-	-	-	-	3.25	-	-	-	-	-
"    "    60's & lgr. . . . .	-	-	-	-	-	-	3.62	-	-	-	-	-
Hale, 48-65's & lgr. Sanger lug	-	-	-	-	-	-	2.25	2.26	-	-	-	-
Hale, cup-pack, Sanger lug . . . .	-	-	-	-	-	-	-	2.35	-	-	-	-
Rio Oso Gem, Sanger lug . . . . .	-	-	-	-	-	-	-	2.05	-	-	-	-
<u>Colorado:</u>												
<u>Palisade District:</u>												
<u>Sales f.o.b. shipping point—</u>												
<u>U. S. No. 1, wrapped</u>												
Elberta, 24-in. up, bn. bakt. . . . .	-	-	-	-	-	-	-	-	2.75	-	-	-
Elberta, 70's & lgr. box . . . . .	-	-	-	-	-	-	-	-	1.25	-	-	-

1/ No quotations from Georgia, Alabama, Carolinas, and Arkansas due to almost complete 1955 crop failure—freeze.

Table 3.—Continued

OTHER FRUITS--CONTINUED

Shipping point and description of sale	Jan.	Feb.	Mar.	Apr.	May	June	July	Aug.	Sept.	Oct.	Nov.	Dec.
	Dol.	Dol.	Dol.	Dol.	Dol.	Dol.	Dol.	Dol.	Dol.	Dol.	Dol.	Dol.
<u>Peaches—Continued 1/</u>												
<u>Michigan:</u>												
<u>West Michigan Points:</u>												
<u>Sales f.o.b. shipping point—</u>												
<u>U. S. No. 1, bushel basket—</u>												
Elberta, 2-in. up. . . . .	-	-	-	-	-	-	-	-	3.08	-	-	-
Halehaven, 2-in. up. . . . .	-	-	-	-	-	-	-	3.01	-	-	-	-
<u>Benton Harbor:</u>												
<u>Cash market growers' sales--</u>												
<u>U. S. No. 1, bushel basket--</u>												
Elberta, 2-in. up. . . . .	-	-	-	-	-	-	-	3.01	3.14	-	-	-
Elberta, 2 1/2-in. up. . . . .	-	-	-	-	-	-	-	3.20	3.53	-	-	-
Fairhaven, 2-in. up. . . . .	-	-	-	-	-	-	-	3.56	-	-	-	-
Golden Jubilee, 2-in. up. . . . .	-	-	-	-	-	-	-	3.48	-	-	-	-
Hale, 2 1/2-in. up. . . . .	-	-	-	-	-	-	-	-	5.12	-	-	-
Hale, 2 1/4-in. up. . . . .	-	-	-	-	-	-	-	-	3.93	-	-	-
Halehaven, 2-in. up. . . . .	-	-	-	-	-	-	-	3.44	-	-	-	-
Halehaven, 2 1/2-in. up. . . . .	-	-	-	-	-	-	-	3.69	-	-	-	-
Redhaven, 2-in. up. . . . .	-	-	-	-	-	-	6.04	5.65	-	-	-	-
Redhaven, 2 1/2-in. up. . . . .	-	-	-	-	-	-	6.33	7.06	-	-	-	-
Rio Oso Gem, 2 1/2-in. up. . . . .	-	-	-	-	-	-	-	-	5.28	-	-	-
<u>New York:</u>												
<u>Rochester, Western &amp; Central</u>												
<u>New York Pts.:</u>												
<u>Sales f.o.b. shipping point</u>												
<u>U. S. No. 1, bushel basket--</u>												
Elberta, 2-in. up. . . . .	-	-	-	-	-	-	-	-	2.48	-	-	-
<u>Washington:</u>												
<u>Yakima Valley:</u>												
<u>Sales f.o.b. shipping point--</u>												
<u>Wash. No. 1, wrapped</u>												
Elberta, 72's & lgr., per box. . . . .	-	-	-	-	-	-	-	1.23	1.11	-	-	-
Hale, 72's & lgr. per b.x. . . . .	-	-	-	-	-	-	-	-	1.05	-	-	-
Hale, 60's & lgr. Sanger lug . . . . .	-	-	-	-	-	-	-	-	1.98	-	-	-
Hale, 60's & lgr. cup-pack . . . . .	-	-	-	-	-	-	-	-	2.09	-	-	-
<u>West Virginia—Virginia—Pennsylvania:</u>												
<u>Martinsburg—Winchester, Roanoke,</u>												
<u>Piedmont, &amp; So. Penn. Sections:</u>												
<u>Sales f.o.b. shipping point--</u>												
<u>U. S. No. 1, bushel basket:</u>												
Elberta, 2-in. up. . . . .	-	-	-	-	-	-	-	2.67	2.50	-	-	-
Halehaven, 2-in. up. . . . .	-	-	-	-	-	-	-	4.28	-	-	-	-
<u>U. S. No. 1, 1/2-bushel basket--</u>												
Golden Jubilee, 2-in. up. . . . .	-	-	-	-	-	-	-	3.27	-	-	-	-
Halehaven, 2-in. up. . . . .	-	-	-	-	-	-	-	3.00	-	-	-	-
Jerseyland, 2-in. up. . . . .	-	-	-	-	-	-	-	3.50	-	-	-	-
Triogen, 2-in. up. . . . .	-	-	-	-	-	-	-	3.50	-	-	-	-
<u>Pears</u>												
<u>New York:</u>												
<u>Rochester, Western and</u>												
<u>Central New York Points:</u>												
<u>Sales f.o.b. shipping point--</u>												
<u>U. S. No. 1:</u>												
Bartlett, 2-in. up. bu. bakt. . . . .	-	-	-	-	-	-	-	-	2.77	-	-	-

1/ No quotations from Georgia, Alabama, Carolinas, and Arkansas due to almost complete 1955 crop failure--freeze.

Table 3.—Continued

OTHER FRUITS—CONTINUED

Shipping point and description of sale	Jan.	Feb.	Mar.	Apr.	May	June	July	Aug.	Sept.	Oct.	Nov.	Dec.
	Dol.	Dol.	Dol.	Dol.	Dol.	Dol.	Dol.	Dol.	Dol.	Dol.	Dol.	Dol.
<u>Pears—Continued</u>												
<u>Washington:</u>												
<u>Yakima Valley:</u>												
<u>Sales f.o.b. shipping point--</u>												
<u>U. S. No. 1, wrapped</u>												
<u>Extra fancy, box</u>												
D'Anjou, var. sizes. . . . .	3.60	-	-	-	-	-	-	-	-	3.48	3.50	3.62
<u>Comb. ex. fancy &amp; fancy</u>												
Bartlett, 165's & lgr.,												
14-lb. lug . . . . .								1.08	.96			
Bartlett, 165's & lgr. box,												
wrapped. . . . .								3.41	3.42			
Bartlett, 180's & lgr. box,												
wrapped. . . . .								3.21				
<u>Plums</u>												
<u>California:</u>												
<u>San Joaquin Valley Points:</u>												
<u>Sales f.o.b. shipping point--</u>												
<u>4-basket crate</u>												
Beauty, 80% U. S. No. 1 or better--												
4 x 4. . . . .						4.09						
4 x 5. . . . .						3.56						
5 x 5. . . . .						3.02						
Santa Rosa, U. S. No. 1--												
4 x 4. . . . .						4.62	4.41					
Santa Rosa, U. S. No. 1, 4 x 5						4.38	3.94	4.00				
Becky Smith, 4 x 5							2.81					
Duarte, 5 x 5												
Wickson, 4 x 5 . . . . .							2.94					
<u>Sacramento Valley, Calif.:</u>												
<u>Sales f.o.b. shipping point--</u>												
<u>U. S. Combination, 80% U. S. No. 1,</u>												
<u>or better - 4-basket crate--</u>												
Beauty, 4 x 4. . . . .						3.75						
4 x 5. . . . .						3.22						
5 x 5. . . . .						2.67						
Burbank, 4 x 5 . . . . .							2.38					
Duarte, 5 x 5 . . . . .							2.74					
Santa Rosa, 4 x 4. . . . .							4.66					
4 x 5. . . . .							4.15					
Wickson, 4 x 5 . . . . .							2.88					
<u>Prunes</u>												
<u>Idaho:</u>												
<u>Western Idaho and</u>												
<u>Malheur County, Oreg.:</u>												
<u>Sales f.o.b. shipping point--</u>												
<u>U. S. No. 1:</u>												
Italian, 1/2-bu. basket, ring									1.30			
faced . . . . .												
<u>Washington and Oregon:</u>												
<u>Walla Walla-Milton-Freewater</u>												
<u>District:</u>												
<u>Sales f.o.b. shipping point--</u>												
<u>U. S. No. 1:</u>												
Demaris, 1/2-bu. basket, faced . . . . .								2.03				
Italian, 1/2-bu. basket, faced . . . . .									1.38			
Italian, 12-lb. lug, loose . . . . .									.66			
<u>Yakima Valley, Wash.:</u>												
<u>Sales f.o.b. shipping point--</u>												
Demaris, Wash. No. 1, 1/2-bu.												
basket, faced . . . . .								1.96				
Demaris, 12-lb. lug, loose . . . . .								.86				
Italian, Wash. No. 1, 1/2-bu.												
basket, faced . . . . .									1.33			
Italian, 12-lb. lug, loose . . . . .									.64			

Table 3.--Continued

MELONS

Shipping point and description of sale	Jan.	Feb.	Mar.	Apr.	May	June	July	Aug.	Sept.	Oct.	Nov.	Dec.
	Dol.	Dol.	Dol.	Dol.	Dol.	Dol.	Dol.	Dol.	Dol.	Dol.	Dol.	Dol.
<u>Cantaloups</u>												
<u>Arizona:</u>												
<u>Phoenix District:</u>												
<u>Sales f.o.b. shipping point--Top ice extra</u>												
<u>Orange flesh, vine ripened--</u>												
27's, jumbo crate . . . . .	-	-	-	-	-	-	4.29	-	-	-	-	-
36's, " . . . . .	-	-	-	-	-	-	4.75	-	-	-	-	-
45's, " . . . . .	-	-	-	-	-	-	3.25	-	-	-	-	-
<u>Yuma District:</u>												
<u>Sales f.o.b. shipping point--Top ice extra</u>												
<u>Orange flesh, vine ripened--</u>												
27's, jumbo crate . . . . .	-	-	-	-	-	4.23	4.56	-	-	-	-	-
36's, " . . . . .	-	-	-	-	-	5.53	5.06	-	-	-	-	-
45's, " . . . . .	-	-	-	-	-	4.80	-	-	-	-	-	-
<u>California:</u>												
<u>Brawley, Imperial Valley:</u>												
<u>Sales f.o.b. shipping point--Top ice extra</u>												
<u>Orange flesh, vine ripened--</u>												
27's, jumbo crate . . . . .	-	-	-	-	-	5.31	-	-	-	-	-	-
36's, " . . . . .	-	-	-	-	-	6.25	-	-	-	-	-	-
45's, " . . . . .	-	-	-	-	-	6.72	-	-	-	-	-	-
<u>Fresno, West Side District:</u>												
<u>Sales f.o.b. shipping point--Top ice extra</u>												
<u>Orange flesh, vine ripened--</u>												
27's, jumbo crate . . . . .	-	-	-	-	-	-	4.05	2.32	2.43	-	-	-
36's, " . . . . .	-	-	-	-	-	-	4.80	2.64	2.88	-	-	-
45's, " . . . . .	-	-	-	-	-	-	4.24	2.12	2.42	-	-	-
<u>Michigan:</u>												
<u>Benton Harbor:</u>												
<u>Cash market growers' sales--</u>												
<u>U. S. No. 1</u>												
Honey Rock & Iroquois, open bushel basket . . . . .	-	-	-	-	-	-	-	1.96	1.95	-	-	-
<u>Texas:</u>												
<u>Lower Rio Grande Valley Points:</u>												
<u>Sales f.o.b. shipping point--Top ice extra</u>												
<u>Vine ripened--Jumbo crate</u>												
23's . . . . .	-	-	-	-	5.50	4.55	-	-	-	-	-	-
27's . . . . .	-	-	-	-	6.74	6.00	-	-	-	-	-	-
36's . . . . .	-	-	-	-	8.08	7.10	-	-	-	-	-	-
45's . . . . .	-	-	-	-	7.11	-	-	-	-	-	-	-
<u>Honeydews</u>												
<u>Arizona:</u>												
<u>Phoenix District:</u>												
<u>Sales f.o.b. shipping point--</u>												
<u>Various sizes, flat crate . . . . .</u>												
-	-	-	-	-	-	-	2.65	-	-	-	-	-
<u>California:</u>												
<u>Central California Pts., Fresno:</u>												
<u>Sales f.o.b. shipping point--</u>												
<u>Various sizes, flats &amp; crates . . . . .</u>												
-	-	-	-	-	-	-	2.44	1.80	1.78	-	-	-
<u>Watermelons</u>												
<u>Arizona:</u>												
<u>Phoenix District:</u>												
<u>Sales f.o.b. shipping point--</u>												
<u>Klondike and Peacock,</u>												
<u>18-20 lb. sv., per ton . . . . .</u>												
-	-	-	-	-	-	57.50	38.19	-	-	-	-	-
<u>California:</u>												
<u>Brawley, Imperial Valley:</u>												
<u>Sales f.o.b. shipping point--</u>												
<u>Klondike and Peacock,</u>												
<u>16-18 lb. sv., per ton . . . . .</u>												
-	-	-	-	-	-	71.18	-	-	-	-	-	-
<u>San Joaquin Valley Points:</u>												
<u>Sales f.o.b. shipping point--</u>												
<u>Klondike and Peacock,</u>												
<u>18-20 lb. sv., per ton . . . . .</u>												
-	-	-	-	-	-	-	38.25	29.29	-	-	-	-

Table 3.—Continued

MELONS—CONTINUED

Shipping point and description of sale	Jan.	Feb.	Mar.	Apr.	May	June	July	Aug.	Sept.	Oct.	Nov.	Dec.
	Dol.	Dol.	Dol.	Dol.	Dol.	Dol.	Dol.	Dol.	Dol.	Dol.	Dol.	Dol.
<b>Watermelons—Continued</b>												
<b>Florida:</b>												
<u>Progressing South Florida through North Florida Sections:</u>												
<u>Sales f.o.b. cash track—</u>												
<u>36-foot car-bulk per car:</u>												
<u>Cannonball, 3-layers</u>												
24-26-lb. av.	-	-	-	-	839.	570.	-	-	-	-	-	-
26-28 "	-	-	-	-	1024.	594.	-	-	-	-	-	-
30-32 "	-	-	-	-	1135.	700.	-	-	-	-	-	-
32-34 "	-	-	-	-	-	707.	-	-	-	-	-	-
34-36 "	-	-	-	-	1253.	-	-	-	-	-	-	-
<u>Congo, 4-layers</u>												
24-26-lb. av.	-	-	-	-	706.	615.	-	-	-	-	-	-
26-30 "	-	-	-	-	700.	709.	-	-	-	-	-	-
30-32 "	-	-	-	-	998.	745.	-	-	-	-	-	-
<u>Long Gray, 4-layers</u>												
22-24-lb. av.	-	-	-	-	1169.	586.	-	-	-	-	-	-
24-26 "	-	-	-	-	1254.	657.	-	-	-	-	-	-
26-28 "	-	-	-	-	1342.	683.	-	-	-	-	-	-
29-30 "	-	-	-	-	1550.	804.	-	-	-	-	-	-
30-32 "	-	-	-	-	1324.	827.	-	-	-	-	-	-
<u>Trenton, Fla.:</u>												
<u>36-foot car-bulk per car:</u>												
<u>Carlot Auction Sales:</u>												
<u>Cannonball, 3-layers</u>												
26-28-lb. av.	-	-	-	-	718.	-	-	-	-	-	-	-
30-31 "	-	-	-	-	715.	-	-	-	-	-	-	-
32-34 "	-	-	-	-	818.	-	-	-	-	-	-	-
<u>Congo, 4-layers</u>												
26-28-lb. av.	-	-	-	-	747.	-	-	-	-	-	-	-
28-30 "	-	-	-	-	776.	-	-	-	-	-	-	-
30-32 "	-	-	-	-	742.	-	-	-	-	-	-	-
32-34 "	-	-	-	-	879.	-	-	-	-	-	-	-
<u>Long Gray, 4-layers:</u>												
24-27-lb. av.	-	-	-	-	839.	-	-	-	-	-	-	-
27-28 "	-	-	-	-	822.	-	-	-	-	-	-	-
30-32 "	-	-	-	-	934.	-	-	-	-	-	-	-
<b>Georgia:</b>												
<u>South Georgia Points:</u>												
<u>Sales f.o.b. cash track—</u>												
<u>36-foot car-bulk per car:</u>												
<u>Cannonball, 3-layers</u>												
24-26-lb. av.	-	-	-	-	506.	159.	-	-	-	-	-	-
26-28 "	-	-	-	-	644.	-	-	-	-	-	-	-
28-30 "	-	-	-	-	557.	190.	-	-	-	-	-	-
32-34 "	-	-	-	-	602.	206.	-	-	-	-	-	-
<u>Congo, 4-layers</u>												
24-26-lb. av.	-	-	-	-	566.	194.	-	-	-	-	-	-
26-28 "	-	-	-	-	271.	210.	-	-	-	-	-	-
28-30 "	-	-	-	-	700.	248.	-	-	-	-	-	-
<u>Long Gray, 4-layers</u>												
24-26-lb. av.	-	-	-	-	574.	213.	-	-	-	-	-	-
26-28 "	-	-	-	-	689.	230.	-	-	-	-	-	-
28-30 "	-	-	-	-	759.	256.	-	-	-	-	-	-
<u>South Carolina:</u>												
<u>Allendale &amp; Nearby pts.:</u>												
<u>Sales f.o.b. cash track—</u>												
<u>36-foot car-bulk per car:</u>												
<u>Congo, 4-layers</u>												
all sizes	-	-	-	-	-	199.	-	-	-	-	-	-
<u>Long Gray, 4-layers</u>												
26-28-lb. av.	-	-	-	-	-	232.	-	-	-	-	-	-
28-30 "	-	-	-	-	-	291.	-	-	-	-	-	-



Table 3.—Continued

VEGETABLES

Shipping point and description of sale	Jan.	Feb.	Mar.	Apr.	May	June	July	Aug.	Sept.	Oct.	Nov.	Dec.
	Dol.	Dol.	Dol.	Dol.	Dol.	Dol.	Dol.	Dol.	Dol.	Dol.	Dol.	Dol.
<u>Beans, Lima</u>												
<u>Florida:</u>												
<u>Plant City:</u>												
<u>Auction price to growers--bushel hamper:</u>												
Baby Lima . . . . .	-	-	-	-	3.73	-	-	-	-	-	-	-
Butterbeans . . . . .	-	-	-	-	2.95	-	-	-	-	-	-	-
Fordhook . . . . .	-	-	-	-	3.67	-	-	-	-	-	-	-
<u>Pompano Beach Section:</u>												
<u>Sales to local buyers--</u>												
Bushel hamper . . . . .	4.41	4.63	4.22	3.75	-	-	-	-	-	-	4.34	2.71
<u>New York:</u>												
<u>Southold, L. I.,</u>												
<u>Auction sales</u>												
Bushel hamper . . . . .	-	-	-	-	-	-	-	-	4.76	-	-	-
<u>North Carolina:</u>												
<u>Auction price to growers--bushel hamper:</u>												
Burgaw . . . . .	-	-	-	-	-	1.50	-	-	-	-	-	-
Edenton . . . . .	-	-	-	-	-	2.45	1.71	-	-	-	-	-
Faison . . . . .	-	-	-	-	-	1.56	3.50	-	-	-	-	-
<u>South Carolina:</u>												
<u>Auction price to growers--bushel hamper:</u>												
Lake City . . . . .	-	-	-	-	-	2.12	-	-	-	-	-	-
<u>Beans, Snap, Green</u>												
<u>Florida:</u>												
<u>Lake County Section:</u>												
<u>Sales f.o.b. shipping point--</u>												
Pole bean, bushel hamper . . . . .	4.21	3.42	2.30	2.97	-	-	-	-	-	-	-	3.18
Tendergreen, " . . . . .	-	2.86	2.49	2.42	-	-	-	-	-	-	-	-
<u>Lake Okeechobee Section:</u>												
<u>Sales f.o.b. shipping point--</u>												
Contender, bushel hamper . . . . .	-	-	2.50	2.29	-	-	-	-	-	-	2.62	2.32
Plentiful, " . . . . .	-	-	-	2.35	2.48	-	-	-	-	-	2.23	2.01
Tendergreen, " . . . . .	-	-	2.42	2.38	3.13	-	-	-	-	-	2.24	2.14
Valentine, " . . . . .	4.48	-	3.54	3.29	4.04	-	-	-	-	-	2.89	2.72
<u>Plant City:</u>												
<u>Auction price to growers--</u>												
Pole bean, bushel hamper . . . . .	-	-	-	4.24	4.99	-	-	-	-	-	-	-
Valentine, " . . . . .	-	-	-	1.70	-	-	-	-	-	-	-	-
Other Round type, bu. hamper . . . . .	-	-	-	1.48	-	-	-	-	-	-	-	-
<u>Pompano Beach Section:</u>												
<u>Sales to local buyers--</u>												
Contender, bushel hamper . . . . .	4.38	3.68	2.73	3.00	-	-	-	-	-	-	2.06	2.41
Plentiful, " . . . . .	4.09	3.30	2.73	-	-	-	-	-	-	-	1.82	2.10
Tendergreen, " . . . . .	3.91	2.99	2.43	-	-	-	-	-	-	-	1.96	2.26
Valentine, " . . . . .	4.96	4.04	3.54	4.00	-	-	-	-	-	-	2.57	2.95
<u>Florida City:</u>												
<u>Sales to local buyers--</u>												
Contender, bushel hamper . . . . .	-	-	-	3.23	-	-	-	-	-	-	-	-
Pole bean, " . . . . .	-	-	-	2.55	-	-	-	-	-	-	-	-
Tendergreen, " . . . . .	-	-	-	2.35	-	-	-	-	-	-	-	-
Valentine, " . . . . .	-	-	-	4.11	-	-	-	-	-	-	-	-
<u>Maryland:</u>												
<u>Eastern Shore:</u>												
<u>Auction price to growers--</u>												
<u>Bushel hamper--</u>												
<u>Salisbury:</u>												
Valentine . . . . .	-	-	-	-	-	1.45	-	-	-	-	-	-
<u>Princess Anne:</u>												
Valentine . . . . .	-	-	-	-	-	1.56	-	-	-	-	-	-

Table 3.--Continued

VEGETABLES--CONTINUED

Shipping point and description of sale	Jan.	Feb.	Mar.	Apr.	May	June	July	Aug.	Sept.	Oct.	Nov.	Dec.
	Dol.	Dol.	Dol.	Dol.	Dol.	Dol.	Dol.	Dol.	Dol.	Dol.	Dol.	Dol.
<u>Beans, Snap, Green--Continued</u>												
<u>Mississippi:</u>												
<u>Crystal Springs &amp; nearby points:</u>												
<u>Sales f.o.b. shipping point--</u>												
<u>Belt graded</u>												
Contender, bushel hamper . . . . .	-	-	-	-	2.80	2.05	-	-	-	-	-	-
Valentine, " " . . . . .	-	-	-	-	3.59	2.41	-	-	-	-	-	-
<u>Auction price to growers--</u>												
Contender, bushel hamper . . . . .	-	-	-	-	2.61	1.54	-	-	-	-	-	-
Valentine, " " . . . . .	-	-	-	-	3.15	1.89	-	-	-	-	-	-
<u>North Carolina:</u>												
<u>Auction price to growers--</u>												
<u>Bushel hamper</u>												
<u>Burgaw:</u>												
Various varieties . . . . .	-	-	-	-	1.49	1.18	-	-	-	-	-	-
<u>Edenton:</u>												
Various varieties . . . . .	-	-	-	-	-	1.33	-	-	-	-	-	-
<u>Faison:</u>												
Various varieties . . . . .	-	-	-	-	2.02	1.59	-	-	-	-	-	-
<u>Mt. Olive:</u>												
Valentine . . . . .	-	-	-	-	2.12	1.12	-	-	-	-	-	-
<u>Wallace:</u>												
Various varieties . . . . .	-	-	-	-	2.03	1.50	-	-	-	-	-	-
<u>West Jefferson:</u>												
Wade, bulk per bushel . . . . .	-	-	-	-	-	-	1.37	-	-	-	-	-
<u>South Carolina:</u>												
<u>Auction sales, price to growers--</u>												
<u>Bushel hamper</u>												
<u>Lake City:</u>												
Tendergreen . . . . .	-	-	-	-	-	1.25	-	-	-	-	-	-
Valentine . . . . .	-	-	-	-	-	1.03	-	-	-	-	-	-
<u>Charleston:</u>												
Valentine . . . . .	-	-	-	-	-	.77	-	-	-	-	-	-
Wade . . . . .	-	-	-	-	-	1.39	-	-	-	-	-	-
<u>Virginia:</u>												
<u>Eastern Shore:</u>												
<u>Auction price to growers--</u>												
<u>Bushel hamper--</u>												
<u>Bayview:</u>												
Various varieties . . . . .	-	-	-	-	-	1.82	-	-	-	-	-	-
<u>Nelsonia:</u>												
Various varieties . . . . .	-	-	-	-	-	1.57	-	-	-	-	-	-
<u>Beans, Snap, Wax</u>												
<u>Florida:</u>												
<u>Sales to local buyers--</u>												
<u>Bushel hamper</u>												
Florida City: . . . . .	-	-	-	3.96	-	-	-	-	-	-	-	-
Pompano Beach Section: . . . . .	5.02	4.78	4.38	5.88	-	-	-	-	-	-	2.58	3.80
<u>Maryland:</u>												
<u>Eastern Shore:</u>												
<u>Auction price to growers--</u>												
<u>Bushel hamper--</u>												
Salisbury: . . . . .	-	-	-	-	-	1.78	-	-	-	-	-	-
<u>Mississippi:</u>												
<u>Crystal Springs &amp; Nearby Points:</u>												
<u>Bushel hamper--</u>												
<u>Sales f.o.b. shipping point. . . . .</u>												
-	-	-	-	-	-	2.35	-	-	-	-	-	-
<u>Auction price to growers . . . . .</u>												
-	-	-	-	-	3.07	1.88	-	-	-	-	-	-

Table 3.--Continued

VEGETABLES--CONTINUED

Shipping point and description of sale	Jan.	Feb.	Mar.	Apr.	May	June	July	Aug.	Sept.	Oct.	Nov.	Dec.
	Dol.	Dol.	Dol.	Dol.	Dol.	Dol.	Dol.	Dol.	Dol.	Dol.	Dol.	Dol.
<u>Beans, Snap, Wax--Continued</u>												
<u>North Carolina:</u>												
<u>Auction price to growers--</u>												
<u>Bushel hamper</u>												
Yaleton	-	-	-	-	-	1.78	-	-	-	-	-	-
Mt. Olive	-	-	-	-	2.30	-	-	-	-	-	-	-
<u>Virginia:</u>												
<u>Eastern Shore:</u>												
<u>Auction price to growers--</u>												
<u>Bushel hamper</u>												
Bayview	-	-	-	-	-	2.21	-	-	-	-	-	-
<u>Brussels Sprouts</u>												
<u>New York:</u>												
<u>Auction sales--</u>												
<u>16-quart crate</u>												
Riverhead, L. I.	-	-	-	-	-	-	-	4.64	4.13	3.71	3.71	-
Southold, L. I.	-	-	-	-	-	-	-	4.46	4.10	3.86	3.56	-
<u>Cabbage</u>												
<u>Arizona:</u>												
<u>Phoenix:</u>												
<u>Sales f.o.b. shipping point--</u>												
<u>Domestic Round type:</u>												
50-pound sack	-	-	-	-	-	-	-	-	-	-	2.15	1.88
<u>Florida:</u>												
<u>Sales f.o.b. shipping point--</u>												
<u>U. S. No. 1:</u>												
<u>Hastings:</u>												
<u>Domestic Round type:</u>												
1-3/4 bushel crate	1.45	1.55	1.42	1.81	-	-	-	-	-	-	-	-
50-lb. sack	1.19	1.29	1.15	1.54	-	-	-	-	-	-	-	-
<u>Lake Okechobee Section:</u>												
<u>Domestic Round type:</u>												
1-3/4 bushel crate	1.58	1.35	1.39	1.67	2.32	-	-	-	-	2.32	1.91	-
50-pound sack	1.36	1.15	1.22	1.57	-	-	-	-	-	-	-	1.66
<u>Red type:</u>												
1-3/4 bushel crate	2.67	2.29	2.36	2.75	2.85	-	-	-	-	-	-	2.94
<u>Savoy type:</u>												
1-3/4 bushel crate	2.06	1.56	1.17	2.13	-	-	-	-	-	-	-	-
<u>Manatee Ruskin Section:</u>												
<u>Domestic Round type:</u>												
1-3/4 bushel crate	1.74	-	-	-	-	-	-	-	-	-	-	-
<u>Sanford-Oviedo-Zellwood Sect.:</u>												
<u>Domestic Round type:</u>												
1-3/4 bushel crate	1.81	1.50	1.38	1.74	2.88	-	-	-	-	-	-	-
50-pound sack	1.57	1.27	1.11	1.50	2.45	-	-	-	-	-	-	-
<u>Mississippi:</u>												
<u>Crystal Springs &amp; Nearby Points:</u>												
<u>Sales f.o.b. shipping point--</u>												
<u>U. S. No. 1:</u>												
<u>Domestic Round type:</u>												
1-3/4 bushel crate	-	-	-	-	2.62	-	-	-	-	-	-	-
50-pound sack	-	-	-	-	2.34	-	-	-	-	-	-	-
<u>New York:</u>												
<u>Rochester, Western &amp; Central N. Y. pts.:</u>												
<u>Sales f.o.b. shipping point and delivered sales shipping point</u>												
<u>50-lb. sack</u>												
Danish type	.81	1.22	1.31	-	-	-	-	1.42	1.51	1.27	1.64	1.63
Domestic Round type	-	-	-	-	-	-	-	1.42	1.36	-	-	-
Red type	1.12	-	-	-	-	-	-	-	-	1.85	2.16	-
<u>Texas:</u>												
<u>Lower Rio Grande Valley Points:</u>												
<u>Sales f.o.b. shipping point--</u>												
<u>Domestic Round type:</u>												
1-3/4 bushel crate	1.65	1.54	1.16	-	-	-	-	-	-	-	-	2.13
50-pound sack	1.40	1.29	1.00	-	-	-	-	-	-	-	-	1.85

Table J.--Continued

VEGETABLES--CONTINUED

Shipping point and description of sale	Jan.	Feb.	Mar.	Apr.	May	June	July	Aug.	Sept.	Oct.	Nov.	Dec.
	Dol.	Dol.	Dol.	Dol.	Dol.	Dol.	Dol.	Dol.	Dol.	Dol.	Dol.	Dol.
<u>Cabbage--Continued</u>												
<u>Virginia:</u>												
<u>Eastern Shore:</u>												
<u>Sales f.o.b. shipping point--</u>												
<u>Domestic Round type:</u>												
1-3/4 bushel crate . . . . .	-	-	-	-	-	.98	-	-	-	-	-	-
<u>Wisconsin:</u>												
<u>Northern and Eastern Wis. Points:</u>												
<u>Sales f.o.b. shipping point and</u>												
<u>delivered sales shipping point</u>												
<u>basis--50-lb. sack</u>												
Danish type . . . . .	-	-	-	-	-	-	-	-	1.40	1.23	1.74	-
Domestic Round type . . . . .	-	-	-	-	-	-	-	-	1.28	1.16	-	-
Red type . . . . .	-	-	-	-	-	-	-	-	1.99	1.80	1.78	-
<u>Carrots</u>												
<u>Arizona:</u>												
<u>Phoenix:</u>												
<u>Sales f.o.b. shipping point--</u>												
<u>Topped, washed:</u>												
48 1-lb. film bag, crate . . .	-	-	-	-	-	2.90	-	-	-	-	-	-
<u>California:</u>												
<u>Salinas-Watsonville District:</u>												
<u>Sales f.o.b. shipping point--</u>												
<u>Medium to large size,</u>												
6-doz. bunches, W.G.A. crate .	-	-	-	-	-	3.18	3.11	3.20	3.67	4.14	4.47	4.75
<u>Topped, washed:</u>												
48 1-lb. film bag, crate . . .	-	-	-	-	-	2.82	2.48	2.72	3.62	3.21	4.22	4.43
<u>New York:</u>												
<u>Rochester, Western &amp; Central Pts.:</u>												
<u>Sales f.o.b. shipping point and</u>												
<u>delivered sales shipping point</u>												
<u>basis--</u>												
<u>Topped, washed:</u>												
Coreless, 50-pound sack. . . .	1.60	-	-	-	-	-	-	-	1.72	1.82	1.80	2.09
<u>Texas:</u>												
<u>Lower Rio Grande Valley Points:</u>												
<u>Sales f.o.b. shipping point--</u>												
<u>Topped, washed:</u>												
48 1-lb. film bag, crate . . .	2.91	2.81	2.46	2.49	2.35	-	-	-	-	-	-	4.13
1-inch Minimum, 50-lb. sack. .	1.35	1.42	1.46	1.44	1.39	-	-	-	-	-	-	-
<u>Cauliflower</u>												
<u>Florida:</u>												
<u>Lake Okechobee Section:</u>												
<u>Sales f.o.b. shipping point--</u>												
9'-12' pony crate. . . . .	1.50	1.80	-	-	-	-	-	-	-	-	-	-
<u>Manatee Ruskin Section:</u>												
<u>Sales f.o.b. shipping point--</u>												
12' & 1gr.,												
double deck crate . . . . .	2.28	2.74	2.75	-	-	-	-	-	-	-	-	-
<u>Sanford-Oviedo-Zellwood Dist.:</u>												
<u>Sales f.o.b. shipping point--</u>												
<u>U. S. No. 1</u>												
9'-12' pony crate. . . . .	1.80	2.47	2.26	2.14	-	-	-	-	-	-	-	-
<u>New York:</u>												
<u>Auction sales, price to grower--</u>												
<u>12' double deck crate</u>												
Riverhead, L. I.: . . . . .	-	-	-	-	-	-	-	-	3.32	2.11	2.03	1.81
Southold, L. I.: . . . . .	-	-	-	-	-	-	-	-	3.76	2.22	2.01	1.47
<u>Texas:</u>												
<u>Lower Rio Grande Valley Pts.:</u>												
<u>Sales f.o.b. shipping point--</u>												
12' catskill crate. . . . .	-	-	-	-	-	-	-	-	-	-	-	1.76

Table 3.—Continued

VEGETABLES—CONTINUED

Shipping point and description of sale	Jan.	Feb.	Mar.	Apr.	May	June	July	Aug.	Sept.	Oct.	Nov.	Dec.
	Dol.	Dol.	Dol.	Dol.	Dol.	Dol.	Dol.	Dol.	Dol.	Dol.	Dol.	Dol.
<u>Celery</u>												
<u>California:</u>												
<u>Sales f.o.b. shipping point--</u>												
<u>16-in. crate, Pascal type--</u>												
<u>Trimmed tops, individually washed--</u>												
<u>Ohula Vista-Oceanside Dist.:</u>												
<u>85% or better, U. S. No. 1:</u>												
2-5 doz., straight and mixed car	2.75	3.32	3.44/2	-	-	-	-	-	-	-	-	2.34/1
<u>Los Angeles, Venice Dist.:</u>												
<u>85% or more U. S. No. 1:</u>												
2-24 doz.	-	-	-	2.21	2.13	2.19	1.89	-	-	-	-	-
<u>Salinas-Watsonville Dist.:</u>												
2-3 doz.	-	-	-	-	-	-	-	2.22	3.42	2.88	2.28	1.95
<u>San Jose and Nearby Points:</u>												
<u>U. S. No. 1</u>												
2-4 doz.	-	-	-	-	-	2.31	2.18	1.98	-	-	-	-
<u>Stockton-Delta Dist.:</u>												
<u>North San Joaquin Valley Pts.</u>												
2-3 doz.	-	-	-	-	-	-	-	-	-	-	2.16	2.03
<u>Florida:</u>												
<u>Sales f.o.b. shipping point--</u>												
<u>Trimmed tops, indiv. washed--</u>												
<u>16-in. crate</u>												
<u>Lake Okeechobee Section:</u>												
<u>85% or more, U. S. No. 1</u>												
Golden Heart, 24-10 doz.	3.39	4.09	3.32	2.61	2.43	-	-	-	-	-	3.45	2.11
Pascal type, 2-10 doz.	2.40	2.93	2.76	2.17	1.93	-	-	-	-	-	2.45	1.72
<u>Sanford-Oviedo-Zellwood Section:</u>												
<u>U. S. No. 1</u>												
Golden Heart, 24-6 doz.	3.55	4.44	3.46	2.91	2.48	-	-	-	-	-	-	-
Pascal type, 2-6 doz.	2.40	3.02	2.77	2.09	1.85	-	-	-	-	-	-	-
<u>Sarasota Section:</u>												
<u>U. S. No. 1 - Pascal type</u>												
2-6 doz.	2.34	3.00	2.88/4	2.42/4	-	-	-	-	-	-	-	-
<u>Michigan:</u>												
<u>West Michigan Points:</u>												
<u>Sales f.o.b. shipping point--</u>												
<u>Trimmed tops, indiv. washed:</u>												
<u>Pascal type,</u>												
2-4 doz., 16-in. crate	-	-	-	-	-	-	2.44	2.59	3.60	2.96	-	-
<u>New York:</u>												
<u>Rochester, Western &amp; Central</u>												
<u>New York Pts.:</u>												
<u>Sales f.o.b. shipping point</u>												
<u>Trimmed tops, indiv. washed,</u>												
<u>16-in. crate:</u>												
Pascal type, 2-8 dozen.	-	-	-	-	-	-	-	3.48	4.20	2.87	-	-
<u>Chinese Cabbage</u>												
<u>Florida:</u>												
<u>Lake Okeechobee Section:</u>												
<u>Sales f.o.b. shipping point--</u>												
16-in. crate, wrapped	1.79	1.77	2.01	1.90	1.44	-	-	-	-	-	1.67	1.50
<u>Corn, Green</u>												
<u>California:</u>												
<u>San Joaquin Valley Pts.:</u>												
<u>Sales f.o.b. shipping point--</u>												
<u>U. S. No. 1</u>												
Yellow, 5-doz., crate	-	-	-	-	-	-	1.47	1.34	-	-	-	-

1/2 1-1/2-4 dozen.

1/3 1-1/2-3 dozen.

1/4 2-10 dozen.

Table 3.—Continued

VEGETABLES—CONTINUED

Shipping point and description of sale	Jan.	Feb.	Mar.	Apr.	May	June	July	Aug.	Sept.	Oct.	Nov.	Dec.
	Dol.	Dol.	Dol.	Dol.	Dol.	Dol.	Dol.	Dol.	Dol.	Dol.	Dol.	Dol.
<u>Corn, Green—Continued</u>												
<b>Florida:</b>												
<u>Sales f.o.b. shipping point—</u>												
<u>U. S. Fancy, Yellow, 5-doz.,</u>												
<u>Wirebound crate</u>												
Dade County Section: . . . . .	3.10	3.00	3.06	3.38	-	-	-	-	-	-	-	-
Ft. Myers-Limmokalee Section: . . . . .	3.56	3.12	-	-	-	-	-	-	-	-	-	-
Lake Okechobee Section: . . . . .	3.43	2.99	3.06	2.70	1.57	-	-	-	-	-	2.49	2.20
Pompano Beach Section: . . . . .	3.66	3.24	3.25	3.50	-	-	-	-	-	-	-	2.27
Sanford-Crisdo-Zellwood Sect.: 1 1/2 doz. . . . .	-	-	-	-	1.82	-	-	-	-	-	-	-
<b>North Carolina:</b>												
<u>Wallace:</u>												
<u>Auction price to growers—</u>												
Yellow, 5-doz., crate . . . . .	-	-	-	-	-	1.04	1.11	-	-	-	-	-
<b>Texas:</b>												
<u>Lower Rio Grande Valley Points:</u>												
<u>Sales f.o.b. shipping point—</u>												
White, 6-8 doz., sack . . . . .	-	-	-	-	1.95	-	-	-	-	-	-	-
Yellow, clipped, 5-7 doz., 1/2 bushel sack . . . . .	-	-	-	-	1.30	-	-	-	-	-	-	-
<u>Cucumbers</u>												
<b>Florida:</b>												
<u>Ft. Myers-Limmokalee Section:</u>												
<u>Sales f.o.b. shipping point—</u>												
<u>U. S. No. 1:</u>												
Waxed, bushel basket . . . . .	4.18	4.25	2.72	4.68	-	-	-	-	-	-	2.71	3.93
<u>Pompano Beach Section:</u>												
<u>Sales to local buyers—</u>												
Waxed, bushel basket . . . . .	4.32	5.58	9.61	6.58	-	-	-	-	-	-	2.37	3.70
<u>Wauchula:</u>												
<u>Sales f.o.b. shipping point—</u>												
<u>Waxed, bushel basket . . . . .</u>												
	-	-	11.00	8.12	4.50	-	-	-	-	-	-	-
<u>Auction price to growers—</u>												
Bushel field crate . . . . .	-	-	-	5.50	3.91	-	-	-	-	-	1.73	-
<u>Webster:</u>												
<u>Auction price to growers—</u>												
Bushel field crate . . . . .	-	-	-	3.84	4.12	-	-	-	-	-	-	-
<b>Michigan:</b>												
<u>Benton Harbor:</u>												
<u>Cash market growers' sales—</u>												
<u>U. S. No. 1:</u>												
Slicers, bushel basket . . . . .	-	-	-	-	-	-	3.58	4.12	3.72	-	-	-
" U. S. No. 2, bushel basket . . . . .	-	-	-	-	-	-	1.68	1.97	1.88	-	-	-
<b>New York:</b>												
<u>Southold, L. I.:</u>												
<u>Auction price to growers—</u>												
Bushel basket . . . . .	-	-	-	-	-	-	-	-	3.89	-	-	-
<b>North Carolina:</b>												
<u>Auction price to growers—</u>												
<u>Bushel basket</u>												
Burgaw: . . . . .	-	-	-	-	-	1.46	-	-	-	-	-	-
Clinton: . . . . .	-	-	-	-	-	1.25	.79	-	-	-	-	-
Dunn: . . . . .	-	-	-	-	-	1.58	-	-	-	-	-	-
Edenton: . . . . .	-	-	-	-	-	1.00	-	-	-	-	-	-
Faison: . . . . .	-	-	-	-	-	1.37	.96	-	-	-	-	-
Mt. Olive: . . . . .	-	-	-	-	-	1.42	-	-	-	-	-	-
Wallace: . . . . .	-	-	-	-	-	1.31	-	-	-	-	-	-

Table 3.—Continued

VEGETABLES—CONTINUED

Shipping point and description of sale	Jan.	Feb.	Mar.	Apr.	May	June	July	Aug.	Sept.	Oct.	Nov.	Dec.
	Dol.	Dol.	Dol.	Dol.	Dol.	Dol.	Dol.	Dol.	Dol.	Dol.	Dol.	Dol.
<u>Cucumbers—Continued</u>												
<u>South Carolina:</u>												
<u>Charleston:</u>												
<u>Sales f.o.b. shipping point--</u>												
Bushel basket . . . . .	-	-	-	-	-	2.38	-	-	-	-	-	-
<u>Lake City Section:</u>												
<u>Auction price to growers--</u>												
Field run, bushel basket. . . . .	-	-	-	-	-	1.08	-	-	-	-	-	-
<u>Virginia:</u>												
<u>Onley, East Shore Pts.:</u>												
<u>Sales f.o.b. shipping point--</u>												
Washed, waxed, bushel basket. . . . .	-	-	-	-	-	2.17	1.76	-	-	-	-	-
<u>Eggplant</u>												
<u>Florida:</u>												
<u>Ft. Myers-Immokalee Section:</u>												
<u>Sales f.o.b. shipping point--</u>												
Wrapped, bushel basket. . . . .	1.52/5	2.71/5	-	-	-	-	-	-	-	-	-	-
<u>Lake Okeechobee Section:</u>												
<u>Sales f.o.b. shipping point--</u>												
Wrapped, bushel basket. . . . .	-	-	-	-	-	-	-	-	-	-	.84	-
<u>Plant City:</u>												
<u>Auction price to growers--</u>												
Bushel basket . . . . .	-	-	-	-	3.13	-	-	-	-	-	-	-
<u>Pompano Beach Section:</u>												
<u>Sales to local buyers--</u>												
Wrapped, bushel basket. . . . .	1.91	4.62	2.81	1.26	-	-	-	-	-	-	.89	.91
<u>Wauchula:</u>												
<u>Auction price to growers--</u>												
Bushel basket . . . . .	-	-	-	-	-	-	-	-	-	-	.61	-
<u>North Carolina:</u>												
<u>Auction price to growers--</u>												
<u>Faison:</u>												
Bushel basket . . . . .	-	-	-	-	-	-	1.56	-	-	-	-	-
<u>Endive</u>												
<u>Florida:</u>												
<u>Lake Okeechobee Section:</u>												
<u>Sales f.o.b. shipping point--</u>												
1-1/9 bu. wirebound crate . . . . .	1.03	1.36	1.48	1.16	1.43	-	-	-	-	-	.95	1.20
<u>Escarole</u>												
<u>Florida:</u>												
<u>Lake Okeechobee Section:</u>												
<u>Sales f.o.b. shipping point--</u>												
1-1/9 bu. wirebound crate . . . . .	1.06	1.08	.91	.91	.97	-	-	-	-	-	.94	1.13

1/5 Fair quality.

Table 3.—Continued

VEGETABLES—CONTINUED

Shipping point and description of sale	Jan.	Feb.	Mar.	Apr.	May	June	July	Aug.	Sept.	Oct.	Nov.	Dec.
	Dol.	Dol.	Dol.	Dol.	Dol.	Dol.	Dol.	Dol.	Dol.	Dol.	Dol.	Dol.
<u>Lettuce</u>												
<u>Arizona:</u>												
Sales f.o.b. shipping point—												
Iceberg type:												
Drypack, 2-doz., carton												
Phoenix District: . . . . .	-	-	1.89	2.12	1.59	-	-	-	-	-	1.91	1.64
Yuma District: . . . . .	2.32	2.08	2.07	2.10	-	-	-	-	-	-	-	1.68
<u>California:</u>												
Sales f.o.b. shipping point—												
Iceberg type:												
Drypack, 2-doz., carton												
Brawley, Imperial Valley: . . . . .	2.36	2.34	2.20	-	-	-	-	-	-	-	-	1.63
Salinas-Watsonville District: . . . . .	-	-	-	1.78	1.13	1.92	1.80	2.29	2.08	1.65	1.16	-
<u>Florida:</u>												
Sales f.o.b. shipping point—												
Lake Okechobee Section:												
Big Boston type, 2-doz.,												
Eastern crate . . . . .												
	1.52 <sup>15</sup>	1.83	1.92	1.67	1.25	-	-	-	-	-	1.84	1.69
Iceberg type:												
Iced pack, 4-doz., W.G.A. crt..												
	5.00	4.58	-	-	-	-	-	-	-	-	-	-
" 5-doz., " "												
	4.22	3.89	-	-	-	-	-	-	-	-	-	-
Drypack, 4-doz., wireb. crt..												
	-	3.56	-	-	-	-	-	-	-	-	-	-
" 5-doz., " "												
	-	2.60	-	-	-	-	-	-	-	-	-	-
" 2-3-doz., 1/2-wireb. crt..												
	-	-	-	-	-	-	-	-	-	-	2.29	1.66
Manatee-Ruskin Section:												
Iceberg type:												
Iced pack, 4-doz., W.G.A. crt..												
	5.17	4.63	4.65	-	-	-	-	-	-	-	-	-
Drypack, 3-4-doz., " "												
	3.30	4.02	3.96	-	-	-	-	-	-	-	-	-
<u>Texas:</u>												
Lower Rio Grande Valley Points:												
Sales f.o.b. shipping point—												
Iceberg type:												
Iced pack, 4-doz., W.G.A. crt..												
	4.10	4.07	6.00	-	-	-	-	-	-	-	-	-
" 5-doz., " "												
	3.48	2.92	4.79	-	-	-	-	-	-	-	-	-
Drypack, 2-doz., carton . . . . .												
	2.40	2.17	3.08	-	-	-	-	-	-	-	-	1.57
<u>Onions</u>												
<u>Arizona:</u>												
Phoenix District:												
Sales f.o.b. shipping point—												
U. S. No. 1, 50-lb. sack												
Yellow Bermuda, medium. . . . .	-	-	-	-	1.04	1.23	-	-	-	-	-	-
<u>California:</u>												
Stockton District:												
Sales f.o.b. shipping point												
U. S. No. 1, 50-lb. sack												
Yellow, 3" & lgr. medium. . . . .	-	-	-	-	-	1.34	1.25	-	-	-	-	-
<u>Idaho-Oregon:</u>												
Western Idaho-Malheur County												
Oregon:												
Sales f.o.b. shipping point—												
U. S. No. 1, 50-pound sack												
White Spanish, 1 1/2-3-in. min. . . . .	-	-	-	-	-	-	-	1.50	1.58	-	-	-
Yellow Spanish, 2-3-in. min. . . . .	-	-	-	-	-	-	-	1.88	.96	-	-	-
" 3-in. min. . . . .	-	-	-	-	-	-	-	1.50	1.52	-	-	-
<u>Michigan:</u>												
West Michigan Points:												
Sales f.o.b. shipping point—												
U. S. No. 1, 50-80% 2-in. and larger, 50-pound sack												
Yellow Globe. . . . .	1.35	1.06	.98	-	-	-	-	1.46	1.58	1.76	1.7 <sup>14</sup>	1.53
White Globe . . . . .	-	-	-	-	-	-	-	2.00	2.05	-	-	-
<u>New York:</u>												
Rochester, Western and Central Points:												
Sales f.o.b. shipping point and delivered sales shipping pt. basis—												
U. S. No. 1, 50-pound sack												
70-80% 2-in. & larger												
Yellow Globe. . . . .	1.45	1.27	1.18	1.33	-	-	-	-	1.66	1.80	1.80	1.61

<sup>15</sup> Fair quality.



Table 3.—Continued

VEGETABLES—CONTINUED

Shipping point and description of sale	Jan.	Feb.	Mar.	Apr.	May	June	July	Aug.	Sept.	Oct.	Nov.	Dec.
	Dol.	Dol.	Dol.	Dol.	Dol.	Dol.	Dol.	Dol.	Dol.	Dol.	Dol.	Dol.
<u>Onions—Continued</u>												
<u>Texas:</u>												
<u>Sales f.o.b. shipping point--</u>												
<u>U. S. No. 1, 50-pound sack--</u>												
<u>Laredo District:</u>												
Crystal White Wax, 2-3-in. & lgr. . . . .	-	-	-	1.77	1.50	-	-	-	-	-	-	-
Grano, 2-3-in. min. . . . .	-	-	-	1.31	1.00	-	-	-	-	-	-	-
Grano, 3-in. & lgr. . . . .	-	-	-	1.80	1.12	-	-	-	-	-	-	-
Yellow Bermuda, 2-3 in. min. . . . .	-	-	-	1.62	1.09	-	-	-	-	-	-	-
<u>Lower Rio Grande Valley Points:</u>												
Crystal White Wax, 2-3-in. & lgr. . . . .	-	-	3.93	1.94	-	-	-	-	-	-	-	-
Granex, 2-3 in. & lgr. . . . .	-	-	1.92	1.96	-	-	-	-	-	-	-	-
" 3-in. & lgr. . . . .	-	-	2.14	2.30	-	-	-	-	-	-	-	-
Grano, 2-3 in. & lgr. . . . .	-	-	1.84	1.42	-	-	-	-	-	-	-	-
" 3-in. & lgr. . . . .	-	-	-	1.61	-	-	-	-	-	-	-	-
Yellow Bermuda, 2-3-in. & lgr. . . . .	-	-	2.12	1.78	-	-	-	-	-	-	-	-
<u>Winter Garden-Eagle Pass District</u>												
Crystal White Wax, 2-3 in. & lgr. . . . .	-	-	-	-	2.62	-	-	-	-	-	-	-
Grano, 2-3 in. min. . . . .	-	-	-	-	1.27	-	-	-	-	-	-	-
" 3-in. min. . . . .	-	-	-	-	1.45	-	-	-	-	-	-	-
Yellow Bermuda, 2-3 inches. . . . .	-	-	-	-	1.40	-	-	-	-	-	-	-
<u>North Texas Points:</u>												
Crystal White Wax, 2-3-in. . . . .	-	-	-	-	-	2.26	-	-	-	-	-	-
White Grano, 2-3-in. . . . .	-	-	-	-	-	2.49	-	-	-	-	-	-
" 3-in. & lgr. . . . .	-	-	-	-	-	2.74	-	-	-	-	-	-
Yellow Grano, 2-3-in. . . . .	-	-	-	-	-	1.68	-	-	-	-	-	-
" 3-in. & lgr. . . . .	-	-	-	-	-	2.05	-	-	-	-	-	-
Yellow Bermuda, 2-3-in. . . . .	-	-	-	-	-	1.66	-	-	-	-	-	-
<u>Virginia:</u>												
<u>East Shore:</u>												
<u>Sales f.o.b. shipping point--</u>												
<u>85% U. S. No. 1, or more</u>												
<u>50-pound sack</u>												
Bremexers . . . . .	-	-	-	-	-	2.01	1.89	-	-	-	-	-
<u>Washington:</u>												
<u>Walla-Walla:</u>												
<u>Sales f.o.b. shipping point--</u>												
<u>50-pound sack</u>												
Yellow, 1-3/4-in. min. . . . .	-	-	-	-	-	1.29	1.13	.90	-	-	-	-
" 3-in. min. . . . .	-	-	-	-	-	1.34	1.31	1.22	-	-	-	-
<u>Peas, Green</u>												
<u>Florida:</u>												
<u>Lake Okechobee Section:</u>												
<u>Sales f.o.b. shipping point--</u>												
Bushel hamper . . . . .	3.14	-	3.00	-	-	-	-	-	-	-	-	2.62
<u>Peppers, Green</u>												
<u>Florida:</u>												
<u>Florida City:</u>												
<u>Sales f.o.b. shipping point--</u>												
<u>Bushel basket</u>												
Calif. Wonder, large size . . . . .	-	-	-	4.21	-	-	-	-	-	-	-	-
" " medium to large. . . . .	-	-	-	2.68	-	-	-	-	-	-	-	-
World Beater, large size. . . . .	-	-	-	2.75	-	-	-	-	-	-	-	-
" " medium to large. . . . .	-	-	-	1.95	-	-	-	-	-	-	-	-
<u>Ft. Myer, Immokalee Section</u>												
<u>Sales f.o.b. shipping point--</u>												
<u>Bushel hamper</u>												
Calif. Wonder, med.-lge. size . . . . .	2.59	4.23	-	-	-	-	-	-	-	-	-	2.62
<u>Lake Okechobee Section</u>												
<u>Sales f.o.b. shipping point--</u>												
<u>Bushel basket</u>												
Calif. Wonder, med.-lge. size . . . . .	2.78	5.08	5.13	4.55	2.78	-	-	-	-	-	-	2.66
<u>Plant City</u>												
<u>Auction price to growers--</u>												
<u>Bushel basket</u>												
Calif. Wonder, med.-lge. size . . . . .	-	-	-	4.58	2.24	-	-	-	-	-	-	-

Table 3.--Continued

VEGETABLES--CONTINUED

Shipping point and description of sale	Jan.	Feb.	Mar.	Apr.	May	June	July	Aug.	Sept.	Oct.	Nov.	Dec.
	Dol.	Dol.	Dol.	Dol.	Dol.	Dol.	Dol.	Dol.	Dol.	Dol.	Dol.	Dol.
<u>Peppers, Green--Continued</u>												
<u>Florida - Continued:</u>												
<u>Pompano Beach Section:</u>												
<u>Sales to local buyers--</u>												
<u>Bushel basket</u>												
Calif. Wonder, med.-lge. size . . . . .	2.13	4.31	4.08	4.15	-	-	-	-	-	-	3.16	2.54
World Beater, med.-lge. size . . . . .	1.46	2.87	2.48	2.10	-	-	-	-	-	-	2.26	1.83
<u>Sanford-Oviedo-Zellwood District:</u>												
<u>Sales f.o.b. shipping point--</u>												
<u>Bushel basket</u>												
Calif. Wonder, large size . . . . .	-	-	-	-	2.58	-	-	-	-	-	-	-
<u>Mauchula</u>												
<u>Auction price to growers--</u>												
<u>Bullnose type, field run,</u>												
Bushel field crate . . . . .	-	-	-	3.06	2.00	-	-	-	-	-	3.08	-
<u>Webster</u>												
<u>Auction price to growers--</u>												
<u>Calif. Wonder, field run,</u>												
Bushel field crate . . . . .	-	-	-	4.24	2.24	-	-	-	-	-	-	-
<u>Mississippi:</u>												
<u>Crystal Springs</u>												
<u>Auction price to growers--</u>												
<u>Bushel basket</u>												
Calif. Wonder . . . . .	-	-	-	-	-	2.31	-	-	-	-	-	-
<u>North Carolina:</u>												
<u>Auction price to growers--</u>												
<u>Bushel hamper</u>												
<u>Clinton</u>												
Bullnose type . . . . .	-	-	-	-	-	1.84	1.03	-	-	-	-	-
Italian . . . . .	-	-	-	-	-	1.48	-	-	-	-	-	-
<u>Dunn</u>												
Bullnose type . . . . .	-	-	-	-	-	2.32	-	-	-	-	-	-
<u>Faison</u>												
Various Varieties . . . . .	-	-	-	-	-	1.94	1.06	-	-	-	-	-
<u>Wallace</u>												
Various varieties . . . . .	-	-	-	-	-	1.81	.81	-	-	-	-	-
<u>Texas:</u>												
<u>Lower Rio Grande Valley Points</u>												
<u>Sales f.o.b. shipping point--</u>												
<u>Bushel basket</u>												
Calif. Wonder type, med.-lge. size . . . . .	-	-	-	-	-	-	-	-	-	-	2.75	2.32
<u>Potatoes, White</u>												
<u>Alabama:</u>												
<u>Foley &amp; Southern Alabama Points</u>												
<u>Sales f.o.b. shipping point and delivered sales shipping point basis--</u>												
<u>100-pound sack</u>												
<u>U. S. No. 1, size A</u>												
Round Red, washed . . . . .	-	-	-	-	3.86	3.09	-	-	-	-	-	-
Sebago, " . . . . .	-	-	-	-	3.82	3.49	-	-	-	-	-	-
<u>U. S. No. 1, size B</u>												
Round Red, washed . . . . .	-	-	-	-	1.41	1.27	-	-	-	-	-	-
Sebago, " . . . . .	-	-	-	-	1.38	1.27	-	-	-	-	-	-
<u>U. S. No. 2</u>												
Round Red, washed . . . . .	-	-	-	-	2.19	1.93	-	-	-	-	-	-
Sebago, " . . . . .	-	-	-	-	-	1.93	-	-	-	-	-	-
<u>Arizona:</u>												
<u>Phoenix District:</u>												
<u>Sales f.o.b. shipping point--</u>												
<u>Round Red, 100-pound sack</u>												
U.S. No. 1, size A, washed . . . . .	-	-	-	-	4.53	2.46	-	-	-	-	-	-

Table 3.—Continued

VEGETABLES—CONTINUED

Shipping point and description of sale	Jan.	Feb.	Mar.	Apr.	May	June	July	Aug.	Sept.	Oct.	Nov.	Dec.
	Dol.	Dol.	Dol.	Dol.	Dol.	Dol.	Dol.	Dol.	Dol.	Dol.	Dol.	Dol.
<u>Potatoes, White—Continued</u>												
<b>California:</b>												
<u>Kern County Points, Bakersfield</u>												
<u>Sales f.o.b. shipping point and sales to local buyers—</u>												
<u>Long White, 100-pound sack</u>												
U. S. No. 1, size A, washed . . . . .	-	-	-	-	3.90	2.02	1.77	-	-	-	-	-
U. S. No. 1, size B, " . . . . .	-	-	-	-	2.50	-	-	-	-	-	-	-
U. S. No. 2 . . . . .	-	-	-	-	2.82	1.45	1.04	-	-	-	-	-
<u>Round Red, 100-pound sack</u>												
U. S. No. 1, size A, washed . . . . .	-	-	-	-	5.11	2.54	-	-	-	-	-	-
<u>Chino-Ferris Valley District:</u>												
<u>Sales f.o.b. shipping point—</u>												
<u>Long White, 100-pound sack</u>												
U. S. No. 1, size A, washed . . . . .	-	-	-	-	-	-	1.60	1.74	-	-	-	-
U. S. No. 2 . . . . .	-	-	-	-	-	-	.96	-	-	-	-	-
<u>Stockton-Delta District:</u>												
<u>Sales f.o.b. shipping point and delivered sales shipping point basis—</u>												
<u>Long White, 100-pound sack</u>												
U. S. No. 1, size A, washed . . . . .	-	-	-	-	-	-	1.81	1.84	-	-	-	-
U. S. No. 2 . . . . .	-	-	-	-	-	-	.89	1.08	-	-	-	-
<b>Colorado:</b>												
<u>Gilcrest District:</u>												
<u>Sales f.o.b. shipping point—</u>												
<u>100-pound sacks—U. S. No. 1, size A</u>												
Cobblers, 2 $\frac{1}{2}$ -in. min. washed . . . . .	-	-	-	-	-	-	1.22	-	-	-	-	-
Round Red, 2 $\frac{1}{2}$ -in. min. " . . . . .	-	-	-	-	-	-	1.08	1.36	1.67	-	-	-
<u>U. S. No. 2</u>												
Round Red, 2 $\frac{1}{2}$ -in. min. washed . . . . .	-	-	-	-	-	-	.82	.97	1.17	-	-	-
<u>Russel Burbank, 100-pound sack</u>												
U. S. No. 1, 5-oz. min. 25-30% 10-oz. and larger. . . . .	-	-	-	-	-	-	-	2.62	-	-	-	-
<u>San Luis Valley:</u>												
<u>Sales f.o.b. shipping point—</u>												
<u>Red McClures, 100-pound sack</u>												
<u>U. S. No. 1, size A</u>												
2-3 in. min. washed . . . . .	1.93	1.89	1.95	4.26	-	-	-	-	-	-	-	-
2-1/8 in. min. " . . . . .	-	-	-	-	-	-	-	1.52	2.08	2.26	2.17	-
2-1/8 in. min. unwashed . . . . .	-	-	-	-	-	-	-	1.41	1.93	2.10	2.03	-
<u>U. S. No. 2</u>												
Washed . . . . .	1.42	1.44	1.35	3.00	-	-	-	-	-	1.36	1.33	1.32
<u>Russel Burbank, 5-oz. min. 20-30% 10-oz. and larger. . . . .</u>												
	-	-	-	-	-	-	-	-	-	-	2.47	2.61
<b>Connecticut:</b>												
<u>Rockville Area</u>												
<u>Sales f.o.b. shipping point and sales to local buyers—</u>												
<u>U. S. No. 1, size A, 2-in. min. Katahdin, unwashed, 100-pound sack and 50-lb. sack per cwt. . . . .</u>												
	2.44	2.44	2.52	4.58	-	-	-	-	-	-	1.43	1.38
<b>Florida:</b>												
<u>Sales f.o.b. shipping point—</u>												
<u>Dade County Section:</u>												
<u>50-pound sack</u>												
<u>Round Red, washed</u>												
U. S. No. 1, size A . . . . .	-	1.98	1.82	3.38	-	-	-	-	-	-	-	-
U. S. No. 1, size B . . . . .	-	1.89	1.73	3.02	-	-	-	-	-	-	-	-
<u>Ft. Myer, Immokalee Section:</u>												
<u>50-pound sack, washed</u>												
<u>Round Red</u>												
U. S. No. 1, size A . . . . .	1.96	1.93	-	-	-	-	-	-	-	-	-	-
U. S. No. 1, size B . . . . .	1.77	1.79	-	-	-	-	-	-	-	-	-	-
U. S. No. 2 . . . . .	1.10	-	-	-	-	-	-	-	-	-	-	-

Table 3.--Continued

VEGETABLES--CONTINUED

Shipping point and description of sale	Jan.	Feb.	Mar.	Apr.	May	June	July	Aug.	Sept.	Oct.	Nov.	Dec.
	Dol.	Dol.	Dol.	Dol.	Dol.	Dol.	Dol.	Dol.	Dol.	Dol.	Dol.	Dol.
<u>Potatoes, White--Continued</u>												
<u>Florida:--Continued</u>												
<u>Hastings:</u>												
<u>100-pound sack</u>												
<u>U. S. No. 1, size A, washed</u>												
Round Red . . . . .	-	-	-	-	7.00	-	-	-	-	-	-	-
Sebago . . . . .	-	-	-	5.56	4.49	-	-	-	-	-	-	-
<u>U. S. No. 1, size B,</u>												
Round Red . . . . .	-	-	-	-	6.00	-	-	-	-	-	-	-
Sebago . . . . .	-	-	-	4.56	2.66	-	-	-	-	-	-	-
<u>50-pound sack</u>												
<u>U. S. No. 1, size A</u>												
Round Red . . . . .	-	-	-	-	3.60	-	-	-	-	-	-	-
Sebago . . . . .	-	-	-	2.88	2.34	-	-	-	-	-	-	-
<u>U. S. No. 1, size B</u>												
Round Red . . . . .	-	-	-	-	3.10	-	-	-	-	-	-	-
Sebago . . . . .	-	-	-	2.38	1.48	-	-	-	-	-	-	-
<u>Lake Okeechobee Section:</u>												
<u>50-pound sack</u>												
<u>Round Red</u>												
U. S. No. 1, size A, washed . . . . .	1.83	-	-	3.05	-	-	-	-	-	-	-	1.83
U. S. No. 1, size B, " . . . . .	1.83	-	-	2.85	-	-	-	-	-	-	-	1.81
<u>Sebago</u>												
U. S. No. 1, size A, washed . . . . .	-	-	-	2.72	-	-	-	-	-	-	-	-
U. S. No. 1, size B, " . . . . .	-	-	-	2.44	-	-	-	-	-	-	-	-
<u>Idaho:</u>												
<u>Idaho Falls-Twin Falls-Burley District:</u>												
<u>Sales f.o.b. shipping point and delivered sales shipping point basis--</u>												
<u>Russel Burbank, washed 2-in. min.</u>												
<u>U. S. No. 1, size A</u>												
10-20% 10-ox. & larger . . . . .	3.01	3.15	3.33	4.77	-	-	-	-	-	-	2.21	2.36
20-30% " . . . . .	3.21	3.35	3.52	4.99	-	-	-	-	-	1.93	2.28	2.41
U. S. No. 2, 5-ox. min. . . . .	1.55	1.81	2.35	3.50	-	-	-	-	-	1.06	1.23	1.15
<u>Sales f.o.b. cash track--</u>												
<u>Russel Burbank, washed</u>												
<u>U. S. No. 1</u>												
10-20% 10-ox. & larger . . . . .	2.88	3.04	3.22	4.63	-	-	-	-	-	-	2.11	2.18
20-30% " . . . . .	3.08	3.26	3.41	4.89	-	-	-	-	-	1.87	2.18	2.32
U. S. No. 2, 5-ox. min. . . . .	1.43	1.73	2.27	3.45	-	-	-	-	-	.94	1.13	1.04
<u>Western Idaho and Malheur County, Oregon</u>												
<u>Sales f.o.b. shipping point and delivered sales shipping point basis--</u>												
<u>100-pound sack</u>												
<u>Long White, washed</u>												
U. S. No. 1, size A . . . . .	-	-	-	-	-	-	-	1.64	1.61	-	-	-
<u>Round Red, washed</u>												
U. S. No. 1, size A . . . . .	-	-	-	-	-	-	1.21	-	-	-	-	-
<u>Russel Burbank, washed</u>												
U. S. No. 1, size A . . . . .	-	-	-	-	-	-	-	2.21	2.30	-	-	-
U. S. No. 2, 6-ox. min. . . . .	-	-	-	-	-	-	-	-	1.32	-	-	-
<u>Sales f.o.b. cash track--</u>												
<u>100-pound sack</u>												
<u>Long White, washed</u>												
U. S. No. 1, size A . . . . .	-	-	-	-	-	-	-	1.59	1.51	-	-	-
U. S. No. 2 . . . . .	-	-	-	-	-	-	-	.84	-	-	-	-
<u>Round Red, washed</u>												
U. S. No. 1, size A . . . . .	-	-	-	-	-	-	-	1.21	-	-	-	-
<u>Russel Burbank, washed</u>												
U. S. No. 1, size A . . . . .	-	-	-	-	-	-	-	2.11	2.25	-	-	-
U. S. No. 2, 6-ox. min. . . . .	-	-	-	-	-	-	-	-	1.24	-	-	-

Table 3.—Continued

VEGETABLES—CONTINUED

Shipping point and description of sale	Jan.	Feb.	Mar.	Apr.	May	June	July	Aug.	Sept.	Oct.	Nov.	Dec.
	Dol.	Dol.	Dol.	Dol.	Dol.	Dol.	Dol.	Dol.	Dol.	Dol.	Dol.	Dol.
<u>Potatoes, White—Continued</u>												
<b>Maine:</b>												
<u>Arcoostook County Points,</u>												
<u>Presque Isle</u>												
<u>Delivered sales shipping point basis--</u>												
<u>Various varieties, mostly Katahdin</u>												
<u>U. S. No. 1, size A, 2-in. min.</u>												
100-pound sack . . . . .	1.99	2.03	2.01	3.80	3.42	-	-	-	-	.53	.67	.69
50 " " /6 . . . . .	-	-	-	-	-	-	-	-	-	-	-	-
<b>Massachusetts:</b>												
<u>Connecticut River Valley Points:</u>												
<u>South Deerfield:</u>												
<u>Sales f.o.b. shipping point--</u>												
<u>U. S. No. 1, unwashed</u>												
<u>Various varieties</u>												
100-pound sack . . . . .	2.20	2.34	2.38	-	-	-	-	1.12	1.12	1.33	1.36	
50 " " . . . . .	-	-	-	-	-	-	-	-	.58	.70	.73	
<b>Michigan:</b>												
<u>West Michigan Points:</u>												
<u>Delivered sales shipping point basis--</u>												
<u>Various varieties, mostly Katahdin type, unwashed, U. S. No. 1</u>												
50-pound paper sack . . . . .	1.06	1.07	1.10	-	-	-	-	.79	.80	.91	.92	
<b>New Jersey:</b>												
<u>Central New Jersey Points:</u>												
<u>Delivered sales shipping point basis--</u>												
<u>100-pound sack</u>												
<u>Various varieties, unwashed</u>												
U. S. No. 1, size A . . . . .	-	-	-	-	-	1.20	1.21	1.04	1.11	-	-	
<b>New York:</b>												
<u>Riverhead and Nearby Points,</u>												
<u>Long Island:</u>												
<u>Sales f.o.b. shipping point and delivered sales shipping point basis--</u>												
<u>100-pound sack</u>												
<u>Various varieties, unwashed</u>												
U. S. No. 1, size A . . . . .	2.58	-	-	-	-	-	-	-	-	-	-	
50-pound sack . . . . .	-	-	-	-	-	.50	.57	.47	.45	-	-	
Cobbler . . . . .	-	-	-	-	-	-	.63	.52	.53	.74	.71	
Chippewas, Katahdin, & Pontiac . . . . .	-	-	-	-	-	-	-	-	.57	.72	.72	
Green Mountains . . . . .	-	-	-	-	-	-	-	-	-	-	-	
<u>Rochester, Western and Central</u>												
<u>New York Points:</u>												
<u>Sales f.o.b. shipping point and delivered sales shipping point basis--</u>												
<u>Various varieties, unwashed</u>												
<u>U. S. No. 1, size A</u>												
100-pound sack . . . . .	2.27	2.30	2.28	4.38	-	-	-	-	-	-	-	
50 " " . . . . .	1.15	1.18	1.22	2.29	-	-	-	.79	.65	.66	.83	.86
15 " " . . . . .	-	-	-	-	-	-	-	-	.25	.26	.31	.32
<b>North Carolina:</b>												
<u>Washington &amp; Eastern N. C. Points:</u>												
<u>Sales f.o.b. shipping point and delivered sales shipping point basis--</u>												
<u>U. S. No. 1, size A, 100-pound sack</u>												
Conso, washed . . . . .	-	-	-	-	-	2.97	2.18	-	-	-	-	
Conso, unwashed . . . . .	-	-	-	-	-	2.88	-	-	-	-	-	
Cobbler, washed . . . . .	-	-	-	-	-	2.57	2.08	-	-	-	-	
Cobbler, unwashed . . . . .	-	-	-	-	-	2.41	1.99	-	-	-	-	
Round red, washed . . . . .	-	-	-	-	-	2.51	-	-	-	-	-	
Sebago, washed . . . . .	-	-	-	-	-	2.78	2.21	-	-	-	-	
Sebago, unwashed . . . . .	-	-	-	-	-	2.67	2.06	-	-	-	-	

16 2 1/4-in. min.

Table 3.—Continued

## VEGETABLES—CONTINUED

Shipping point and description of sale	Jan.	Feb.	Mar.	Apr.	May	June	July	Aug.	Sept.	Oct.	Nov.	Dec.
	Dol.	Dol.	Dol.	Dol.	Dol.	Dol.	Dol.	Dol.	Dol.	Dol.	Dol.	Dol.
<u>Potatoes, White—Continued</u>												
<u>Pennsylvania:</u>												
<u>Lancaster-Allentown-Bloomsburg</u>												
<u>Sections:</u>												
<u>Delivered sales shipping point</u>												
<u>base—</u>												
<u>U. S. No. 1, size A</u>												
<u>Katahdin type, unwashed</u>												
100-pound sack . . . . .	2.41	2.42	2.40	-	-	-	-	-	.60	.63	.76	.72
50 " " . . . . .	-	-	-	-	-	-	-	-	-	-	-	-
<u>South Carolina:</u>												
<u>Charleston &amp; Nearby Points:</u>												
<u>Sales f.o.b. shipping point--</u>												
<u>Sebago, 100-pound sack, washed</u>												
U. S. No. 1, size A . . . . .	-	-	-	-	-	3.50	-	-	-	-	-	-
U. S. No. 1, size A, unwashed . . . . .	-	-	-	-	-	3.19	-	-	-	-	-	-
U. S. No. 1, size B . . . . .	-	-	-	-	-	1.50	-	-	-	-	-	-
U. S. No. 1, size A, 50-pound . . . . .	-	-	-	-	-	1.85	-	-	-	-	-	-
U. S. No. 1, size B, 50-pound . . . . .	-	-	-	-	-	.78	-	-	-	-	-	-
<u>Virginia:</u>												
<u>East Shore, Onley:</u>												
<u>Sales f.o.b. shipping point</u>												
<u>and delivered sales shipping</u>												
<u>point base—</u>												
<u>Cobbler, unwashed, U. S. No. 1,</u>												
<u>size A, 100-pound sack . . . . .</u>												
-	-	-	-	-	-	2.68	1.44	-	-	-	-	-
<u>Washington:</u>												
<u>Yakima Valley, Moses Lake-</u>												
<u>Ellensburg District:</u>												
<u>Sales f.o.b. shipping point--</u>												
<u>Long White, washed</u>												
<u>U. S. No. 1, size A, 2-in. min.,</u>												
<u>100-pound sack . . . . .</u>												
-	-	-	-	-	-	-	1.75	1.66	1.41	-	-	-
<u>Round Red, washed</u>												
<u>U. S. No. 1, size A, 2-in. min.,</u>												
<u>100-pound sack . . . . .</u>												
-	-	-	-	-	-	-	-	1.24	-	-	-	-
<u>U. S. No. 1, size A, 1-7/8 in.,</u>												
<u>min., 100-pound sack . . . . .</u>												
-	-	-	-	-	-	-	1.35	1.19	-	-	-	-
<u>U. S. No. 2, 50-pound sack . . . . .</u>												
-	-	-	-	-	-	-	.48	.45	-	-	-	-
<u>Russet Burbank, washed</u>												
<u>U. S. No. 1, size A, 2-in. min.</u>												
100-pound sack . . . . .	3.17	3.39	3.58	-	-	-	-	2.02	1.89	1.72	2.30	2.72
U. S. No. 2, 100-pound sack . . . . .	1.72	-	-	-	-	-	-	-	-	-	-	-
U. S. No. 2, 50 " " . . . . .	.92	.96	.98	-	-	-	-	.48	.50	.51	.61	.81
<u>Wisconsin:</u>												
<u>Madison and Other Wisconsin Points</u>												
<u>Sales f.o.b. shipping point--</u>												
<u>U. S. No. 1, size A</u>												
<u>100-pound sack</u>												
Katahdin, washed & unwashed . . . . .	1.95	1.97	2.06	-	-	-	-	-	1.1	-	-	-
Pontiac, washed and unwashed												
some ware . . . . .	1.92	2.25	-	-	-	-	-	-	-	-	-	-
Russet Burbank, washed and												
unwashed . . . . .	2.68	2.95	3.50	-	-	-	-	-	-	-	-	-
<u>Radishes</u>												
<u>Florida:</u>												
<u>Lake Okeechobee Section:</u>												
<u>Sales f.o.b. shipping point--</u>												
<u>16-qt. basket, 30's, 8-oz.</u>												
film bags . . . . .	1.59	1.72	1.63	2.02	1.52	-	-	-	-	-	1.07	1.58

1 Reports on Wisconsin potatoes discontinued in fall of 1955.

Table 3.--Continued

VEGETABLES--CONTINUED

Shipping point and description of sale	Jan.	Feb.	Mar.	Apr.	May	June	July	Aug.	Sept.	Oct.	Nov.	Dec.
	Dol.	Dol.	Dol.	Dol.	Dol.	Dol.	Dol.	Dol.	Dol.	Dol.	Dol.	Dol.
<u>Spinach</u>												
<u>Texas:</u>												
<u>Seale Pass-Winter Garden District:</u>												
<u>Sales f.o.b. shipping point--</u>												
Savoy type, bushel basket . . .	1.50	1.51	1.27	-	-	-	-	-	-	-	-	1.34
Savoy type, cutleaf for packaging, bushel basket . . .	2.22	2.40	1.96	-	-	-	-	-	-	-	-	2.00
<u>Sweetpotatoes</u>												
<u>Louisiana:</u>												
<u>Southwest Louisiana Points:</u>												
<u>Sales f.o.b. shipping point--</u>												
<u>Porto Rican, 50-lb. crate</u>												
U. S. No. 1, cured . . . . .	4.32	4.39	4.44	4.38	-	-	-	-	-	-	-	2.86
U. S. No. 1, uncured . . . . .	-	-	-	-	-	-	-	2.17	2.12	1.96	2.34	-
U. S. No. 2, cured . . . . .	2.25	2.36	2.42	2.38	-	-	-	-	-	-	-	1.39
U. S. No. 2, uncured . . . . .	-	-	-	-	-	-	-	1.20	1.12	1.12	1.29	-
<u>Maryland:</u>												
<u>Eastern Shore</u>												
<u>Sales f.o.b. shipping point and delivered sales shipping point basis--</u>												
<u>U. S. No. 1</u>												
<u>Washed &amp; waxed, bushel basket</u>												
Maryland Golden . . . . .	-	-	-	-	-	-	-	-	1.60	1.89	-	-
<u>Virginia:</u>												
<u>Eastern Shore</u>												
<u>Sales f.o.b. shipping point and delivered sales shipping point basis--</u>												
<u>U. S. No. 1</u>												
<u>Washed &amp; waxed, bushel basket</u>												
Maryland Golden and Oklahoma . . . . .	-	-	-	-	-	-	-	-	1.50	1.49	-	-
<u>Tomatoes</u>												
<u>California:</u>												
<u>Colata-Oxnard-Carpenteria District:</u>												
<u>Sales f.o.b. shipping point--</u>												
<u>Green, unwrapped, U. S. No. 1</u>												
<u>lug box:</u>												
6 x 6 and larger . . . . .	-	-	-	-	-	-	-	-	3.00	2.75	-	-
6 x 7 . . . . .	-	-	-	-	-	-	-	-	2.50	2.36	-	-
<u>Marced District:</u>												
<u>Sales f.o.b. shipping point--</u>												
<u>Green, wrapped, 85% or better</u>												
<u>U. S. No. 1, 3-layer lug:</u>												
6 x 6 and larger . . . . .	-	-	-	-	-	-	3.04	2.50	-	-	-	-
6 x 7 . . . . .	-	-	-	-	-	-	2.56	-	-	-	-	-
<u>North San Joaquin-Sacramento Valley Points:</u>												
<u>Sales f.o.b. shipping point--</u>												
<u>85% or more U. S. No. 1</u>												
<u>Green, wrapped, lug box:</u>												
6 x 6 and larger . . . . .	-	-	-	-	-	-	-	2.66	3.13	2.86	3.56	-
6 x 7 . . . . .	-	-	-	-	-	-	-	2.23	2.59	2.48	3.31	-
7 x 7 . . . . .	-	-	-	-	-	-	-	-	2.15	1.99	2.81	-

Table 3.—Continued

VEGETABLES—CONTINUED

Shipping point and description of sale	Jan.	Feb.	Mar.	Apr.	May	June	July	Aug.	Sept.	Oct.	Nov.	Dec.
	Dol.	Dol.	Dol.	Dol.	Dol.	Dol.	Dol.	Dol.	Dol.	Dol.	Dol.	Dol.
<u>Tomatoes—Continued</u>												
<u>Florida:</u>												
<u>Dade County Section:</u>												
<u>Sales f.o.b. shipping point--</u>												
<u>85% or more U. S. No. 1,</u>												
<u>Green, unwrapped, 60-lb. crate:</u>												
6 x 6 and larger . . . . .	5.89	7.78	9.09	7.02	-	-	-	-	-	-	-	4.60
6 x 7 . . . . .	5.89	6.72	6.91	5.52	-	-	-	-	-	-	-	3.48
7 x 7 . . . . .	4.38	5.31	3.98	3.44	-	-	-	-	-	-	-	2.51
<u>Immokalee Section—Ft. Myers:</u>												
<u>Sales f.o.b. shipping point--</u>												
<u>Green, unwrapped, 60-lb. crate:</u>												
<u>85% or more, U. S. No. 1</u>												
6 x 6 and larger . . . . .	5.67	-	-	7.44	6.75	-	-	-	-	-	7.13	4.80
6 x 7 . . . . .	5.19	-	-	6.40	4.81	-	-	-	-	-	5.31	3.50
7 x 7 . . . . .	4.00	-	-	4.71	3.12	-	-	-	-	-	3.56	2.50
<u>Ft. Pierce Section:</u>												
<u>Sales f.o.b. shipping point--</u>												
<u>Green, unwrapped, 60-lb. crate:</u>												
<u>85% or more U. S. No. 1</u>												
6 x 6 and larger . . . . .	-	-	-	6.53	8.23	-	-	-	-	-	7.39	4.61
6 x 7 . . . . .	-	-	-	5.53	5.80	-	-	-	-	-	5.54	3.39
7 x 7 . . . . .	-	-	-	4.22	3.82	-	-	-	-	-	3.99	2.37
<u>Manatee-Muskin Section:</u>												
<u>Sales f.o.b. shipping point--</u>												
<u>Green, unwrapped, 60-lb. crate:</u>												
<u>85% or more U. S. No. 1</u>												
6 x 6 and larger . . . . .	-	-	-	6.67	8.25	-	-	-	-	-	-	-
6 x 7 . . . . .	-	-	-	5.67	5.86	-	-	-	-	-	-	-
7 x 7 . . . . .	-	-	-	4.75	-	-	-	-	-	-	-	-
<u>Green, unwrapped, lug box:</u>												
6 x 6 and larger . . . . .	-	-	-	3.75	4.74	-	-	-	-	-	-	-
6 x 7 . . . . .	-	-	-	3.25	3.61	-	-	-	-	-	-	-
7 x 7 . . . . .	-	-	-	2.75	-	-	-	-	-	-	-	-
<u>Michigan:</u>												
<u>Benton Harbor:</u>												
<u>Cash market growers sales--</u>												
Mich. No. 1, 8-qt. carton . . .	-	-	-	-	-	-	1.24	.90	1.21	.94	-	-
Mich. No. 1, 8 2-qt. basket . .	-	-	-	-	-	-	-	2.04	2.45	1.79	-	-
Mich. No. 2, 12-qt. basket . . .	-	-	-	-	-	-	1.02	.53	.96	.64	-	-
<u>Mississippi:</u>												
<u>Jackson:</u>												
<u>Price to growers--</u>												
Green, field run, bulk per cwt. .	-	-	-	-	-	5.93	-	-	-	-	-	-
<u>New York:</u>												
<u>Rochester, Western &amp; Central N. Y.</u>												
<u>Points:</u>												
<u>Sales f.o.b. shipping point</u>												
<u>Green, unwrapped, 60-lb. crate:</u>												
6 x 6 and larger . . . . .	-	-	-	-	-	-	-	4.25	4.50	-	-	-
6 x 7 . . . . .	-	-	-	-	-	-	-	3.25	3.48	-	-	-
<u>South Carolina:</u>												
<u>Charleston &amp; Beaufort County Points:</u>												
<u>Sales f.o.b. shipping point--</u>												
<u>Green, unwrapped, 60-lb. crate:</u>												
6 x 6 and larger . . . . .	-	-	-	-	-	7.54	-	-	-	-	-	-
6 x 7 . . . . .	-	-	-	-	-	5.21	-	-	-	-	-	-
7 x 7 . . . . .	-	-	-	-	-	4.21	-	-	-	-	-	-



VEGETABLES--CONTINUED

Shipping point and description of sale	Jan.	Feb.	Mar.	Apr.	May	June	July	Aug.	Sept.	Oct.	Nov.	Dec.
	Dol.	Dol.	Dol.	Dol.	Dol.	Dol.	Dol.	Dol.	Dol.	Dol.	Dol.	Dol.

Tomatoes--Continued

Texas:

East Texas Points:

Sales f.o.b. shipping point--

85% or more U. S. No. 1,

Green, wrapped, lug box

6 x 6 and larger. . . . .	-	-	-	-	-	3.36	-	-	-	-	-	-
6 x 7 . . . . .	-	-	-	-	-	2.58	-	-	-	-	-	-
7 x 7 . . . . .	-	-	-	-	-	1.88	-	-	-	-	-	-

Lower Rio Grande Valley Points:

Sales f.o.b. shipping point--

U. S. No. 1, lug box

Green, wrapped

6 x 6 and larger. . . . .	-	-	-	-	3.31	3.29	-	-	-	-	-	-
6 x 7 . . . . .	-	-	-	-	2.25	2.16	-	-	-	-	-	-
7 x 7 . . . . .	-	-	-	-	1.78	1.65	-	-	-	-	-	-

Virginia: .

Only-Eastern Shore Points:

Sales f.o.b. shipping point

and delivered sales shipping

point basis--

U. S. No. 1, lug box

Green, wrapped

6 x 6 and larger. . . . .	-	-	-	-	-	2.90	2.42	-	-	-	-	-
6 x 7 . . . . .	-	-	-	-	-	-	2.67	-	-	-	-	-

85% or more, U. S. No. 1

Green, unwrapped, 60-lb. crate:

6 x 6 and larger. . . . .	-	-	-	-	-	-	4.40	-	-	-	-	-
6 x 7 . . . . .	-	-	-	-	-	-	3.69	-	-	-	-	-
7 x 7 . . . . .	-	-	-	-	-	-	3.16	-	-	-	-	-

Table 4.--Index of wholesale prices of fresh fruits and vegetables at New York City and Chicago, by months, 1936-55 <sup>1</sup>/<sub>1</sub>

Corresponding month 1935-39 = 100

Market, commodity and year	Jan.	Feb.	Mar.	Apr.	May	June	July	Aug.	Sept.	Oct.	Nov.	Dec.	Year
<u>NEW YORK</u>													
<u>Fruits</u>													
1936	110	102	108	102	109	116	119	107	116	118	115	106	113
1937	121	133	128	131	123	129	104	107	106	102	99	111	111
1938	93	89	89	88	96	84	91	96	89	88	94	98	92
1939	80	80	79	78	79	90	88	83	98	100	92	80	87
1940	81	90	88	92	99	111	90	91	87	102	95	96	95
1941	93	91	92	87	89	119	106	105	114	132	126	111	108
1942	100	103	107	110	109	151	135	130	140	137	159	160	132
1943	117	132	143	137	170	240	224	238	212	204	189	168	186
1944	161	155	167	152	162	213	192	160	169	188	206	194	178
1945	186	177	173	167	170	168	163	167	193	190	194	211	179
1946	203	192	192	176	234	188	193	160	184	215	186	187	190
1947	163	182	176	164	185	200	168	163	180	181	167	152	174
1948	149	149	151	129	162	187	201	180	180	175	174	172	172
1949	185	191	192	187	192	209	195	147	145	173	162	163	176
1950	189	196	195	170	197	220	198	174	172	188	187	175	189
1951	179	197	175	150	160	189	194	187	195	195	178	176	183
1952	182	179	189	169	167	229	247	187	202	220	206	203	203
1953	213	212	212	195	188	221	229	192	198	204	216	194	207
1954	191	191	189	172	193	224	235	196	217	217	211	188	208
1955	192	193	178	196	210	271	251	188	179	189	194	187	205
<u>Vegetables</u>													
1936	104	96	96	101	105	125	114	117	111	98	104	99	107
1937	109	115	118	98	122	101	98	103	111	101	107	100	107
1938	98	93	86	89	90	90	93	99	100	105	92	99	93
1939	95	95	101	106	90	101	97	85	86	92	98	96	94
1940	104	114	109	110	112	99	92	94	81	75	83	88	94
1941	106	109	113	112	106	105	112	100	95	109	130	128	107
1942	141	136	122	132	122	118	138	161	128	138	153	173	134
1943	194	194	297	220	219	231	198	184	197	188	195	200	207
1944	203	180	168	172	180	179	204	177	194	174	173	191	179
1945	198	182	175	191	184	219	276	216	164	179	181	196	193
1946	185	186	192	190	172	186	203	189	177	157	176	167	179
1947	189	202	194	181	206	190	196	184	197	206	218	225	194
1948	230	227	204	216	230	201	236	190	183	170	185	188	200
1949	227	224	214	199	202	191	220	202	194	166	204	190	198
1950	187	177	162	180	178	177	195	153	147	161	180	195	172
1951	207	212	175	192	189	220	188	175	178	196	257	289	203
1952	265	235	232	260	224	231	317	251	226	215	248	265	243
1953	274	229	237	230	190	264	220	210	158	164	190	201	212
1954	203	193	194	177	192	175	230	199	180	175	187	208	189
1955	214	215	210	206	196	155	183	239	220	206	224	212	202
<u>Fruits &amp; Vegetables</u>													
1936	104	96	99	101	105	121	117	112	118	112	111	90	109
1937	111	118	120	106	120	110	103	108	109	104	104	107	109
1938	95	91	86	88	93	89	92	97	92	93	92	100	92
1939	91	92	94	97	87	97	88	81	86	91	92	91	90
1940	95	107	102	107	108	102	88	87	79	86	88	97	94
1941	103	105	106	105	101	111	106	96	100	117	127	124	107
1942	124	125	119	127	119	132	133	135	127	131	154	171	132
1943	160	171	231	190	201	227	195	199	196	181	180	188	193
1944	187	173	169	168	173	186	193	160	171	172	177	196	175
1945	195	184	177	185	177	201	207	173	167	170	179	204	183
1946	193	193	191	185	185	186	193	163	170	176	171	179	180
1947	180	202	192	178	200	194	177	162	161	182	184	196	183
1948	195	196	185	186	205	195	211	173	173	163	173	184	185
1949	211	215	207	196	197	201	203	161	158	157	175	181	185
1950	190	190	175	179	181	201	194	157	148	164	173	189	177
1951	196	212	177	179	178	209	191	179	181	184	207	243	192
1952	230	215	217	231	203	236	274	203	202	202	216	239	221
1953	248	227	229	219	190	247	224	189	173	174	193	198	206
1954	198	195	181	176	196	210	232	196	195	188	189	199	196
1955	207	208	200	202	199	208	221	200	191	186	198	202	201

See footnote at end of table.

Table 4.—Continued

Corresponding month 1935-39 = 100

Market, commodity and year	Jan.	Feb.	Mar.	Apr.	May	June	July	Aug.	Sept.	Oct.	Nov.	Dec.	Year
<b>CHICAGO</b>													
<b>Fruits</b>													
1936	115	112	104	97	109	110	115	106	120	119	115	108	112
1937	118	118	124	122	117	128	100	105	109	98	93	95	109
1938	83	84	82	85	85	85	97	98	89	93	94	100	91
1939	85	82	82	88	79	97	97	87	103	105	94	87	92
1940	81	88	96	104	94	115	106	112	91	97	103	100	100
1941	95	94	98	89	83	112	113	108	101	130	132	115	108
1942	99	100	112	113	94	149	162	147	137	146	162	166	136
1943	131	142	151	150	169	236	245	230	221	227	219	196	200
1944	154	158	172	169	159	215	201	174	161	208	202	177	180
1945	157	168	174	153	175	187	197	210	173	215	219	216	190
1946	194	209	196	192	171	181	223	187	176	219	198	180	194
1947	152	190	177	162	177	212	238	194	183	180	164	157	186
1948	135	143	155	171	145	187	222	210	181	190	185	183	181
1949	184	185	206	200	211	207	218	171	155	179	161	183	188
1950	182	202	196	189	191	212	249	235	202	201	189	191	207
1951	172	195	196	163	163	190	218	231	211	203	200	204	198
1952	202	202	202	183	197	237	254	214	209	231	211	218	217
1953	204	206	233	221	203	210	251	221	222	227	238	220	223
1954	199	181	206	202	185	183	275	243	241	243	226	210	221
1955	228	195	217	209	248	340	333	283	222	223	217	220	254
<b>Vegetables</b>													
1936	94	91	83	91	102	129	141	143	130	113	106	107	110
1937	122	130	130	106	113	99	94	93	93	91	90	94	105
1938	93	91	87	94	89	91	80	86	91	94	95	105	92
1939	96	89	92	95	99	96	91	76	92	106	101	99	94
1940	99	95	97	104	120	102	85	82	103	88	86	94	97
1941	93	88	93	94	103	108	101	97	106	111	121	134	103
1942	136	132	113	121	136	130	137	144	139	165	165	170	139
1943	164	199	196	205	206	210	232	179	193	185	187	133	192
1944	176	159	146	161	180	205	197	179	188	175	178	195	176
1945	170	160	159	184	209	217	239	207	171	199	187	194	192
1946	172	168	166	171	160	173	203	169	168	160	170	162	169
1947	171	169	158	164	207	193	213	224	203	211	232	246	198
1948	236	227	198	212	241	222	207	172	236	198	187	202	211
1949	224	231	202	185	201	184	190	202	214	179	199	203	200
1950	193	174	159	173	185	182	203	187	164	174	184	214	182
1951	187	197	176	177	201	219	209	193	221	215	270	295	211
1952	259	228	229	215	244	265	238	266	246	258	260	262	251
1953	233	216	195	179	196	221	217	204	202	186	202	187	205
1954	183	163	178	180	199	215	233	183	181	217	211	200	197
1955	194	187	186	208	212	196	177	158	216	203	188	213	198
<b>Fruits &amp; Vegetables</b>													
1936	100	96	90	92	104	121	127	123	123	115	110	106	110
1937	120	124	127	110	114	109	98	99	101	95	92	95	106
1938	89	88	85	90	87	89	87	92	95	94	93	104	91
1939	91	87	88	92	92	97	93	81	90	102	96	93	92
1940	92	92	96	104	112	107	95	98	99	91	90	94	98
1941	94	91	95	92	99	110	105	103	105	117	123	124	105
1942	120	119	112	119	122	138	146	144	143	151	161	165	137
1943	150	176	180	184	194	222	238	197	206	179	196	195	194
1944	166	160	154	164	173	209	200	177	175	179	178	186	176
1945	165	166	165	173	197	206	216	206	177	199	193	197	190
1946	183	191	171	176	160	178	212	178	179	174	169	161	177
1947	163	175	165	162	198	198	220	208	200	184	194	206	191
1948	193	191	181	195	207	208	211	187	211	181	177	190	195
1949	207	211	199	184	202	198	205	184	181	158	174	189	191
1950	186	182	167	174	186	198	219	199	181	172	171	196	187
1951	176	195	179	168	188	208	212	208	216	190	230	253	202
1952	232	213	216	200	229	255	273	235	228	225	228	239	232
1953	216	209	197	188	200	220	234	216	213	187	204	198	208
1954	185	165	185	182	196	206	256	215	211	222	205	199	205
1955	195	188	194	202	227	256	245	238	222	201	190	214	217

<sup>1</sup> The index of wholesale prices presented in this table were computed from prices representing private and auction sales, weighted according to the unloads of each fruit and vegetable for that month. Index numbers for the year were obtained by weighting the monthly data by the unloads for the respective months.

The following fruits and vegetables are included for the years 1935 to 1940: Apples, cantaloupes, cherries, cranberries, grapefruit, grapes, honeyball melons, honeydew melons, lemons, oranges, peaches, pears, plums and prunes, strawberries, watermelons, asparagus, snap beans, broccoli, cabbage, carrots, cauliflower, celery, green corn cucumbers, lettuce, onions, peas, peppers, potatoes, spinach, sweetpotatoes, and tomatoes. The following fruits and vegetables were added beginning in 1941: Blueberries, beets, eggplant, escarole, kale, mushrooms and radishes.

Table 5.—Computed wholesale values <sup>1</sup> per carlot of domestic fresh fruits and vegetables, New York City and Chicago, by months, 1954-1955.  
(Values are based on stock of good merchantable quality and condition)

Year, market, and commodity	Jan.	Feb.	Mar.	Apr.	May	June	July	Aug.	Sept.	Oct.	Nov.	Dec.	Year
	Dol.	Dol.	Dol.	Dol.	Dol.	Dol.	Dol.	Dol.	Dol.	Dol.	Dol.	Dol.	Dol.
<b>1954 - New York City</b>													
Fruits	2134	2195	2250	2276	2583	2609	2395	2209	2567	2728	2739	2241	2462
Vegetables	1564	1502	1511	1648	1787	1387	1382	1169	1152	1230	2680	1675	1443
Fruits and Vegetables	1752	1733	1731	1812	2014	1953	1866	1711	1767	1863	2703	1852	1834
<b>1954 - Chicago</b>													
Fruits	2339	2145	2433	2678	2615	2028	2458	2295	2754	2846	2688	2484	2455
Vegetables	1385	1280	1530	1712	1774	1731	1595	1117	1049	1331	1535	1466	1465
Fruits and Vegetables	1654	1509	1789	1942	2008	1866	2001	1650	1652	1917	1855	1735	1808
<b>1955 - New York City</b>													
Fruits	2144	2223	2121	2589	2817	3151	2566	2131	2128	2375	2527	2222	2425
Vegetables	1650	1675	1803	1916	1782	1232	1099	1407	1408	1442	1754	1704	1556
Fruits and Vegetables	1878	1848	1918	2075	2054	1933	1782	1748	1730	1848	2045	1872	1885
<b>1955 - Chicago</b>													
Fruits	2682	2304	2564	2772	3512	3765	2980	2675	2545	2605	2588	2601	2827
Vegetables	1470	1468	1599	1974	1890	1579	1213	1078	1251	1248	1367	1564	1476
Fruits and Vegetables	1741	1720	1870	2150	2315	2324	1918	1826	1734	1730	1719	1860	1920

<sup>1</sup> The monthly carlot values in this table were computed from representative average prices including both private sales and auction transactions, and average quantities per carload (pre-war basis) of each leading fruit and vegetable. For each commodity this average monthly carlot value was weighted by domestic carload, boat and available truck unloads in obtaining a monthly average carlot value for all commodities. Estimates of farmers' market truck receipts were not available for Chicago. Estimated values for the year were obtained by weighting the monthly figures shown in the table by the monthly unloads.

Fruits included for 1954 and 1955: Apples, blueberries, cantaloups, cherries, cranberries, grapefruit, grapes, honeyball melons, honeydew melons, lemons, oranges, peaches, pears, plums and fresh prunes, strawberries, and watermelons. Vegetables included for 1954 and 1955: Asparagus, beets, snap beans, broccoli, cabbage, carrots, cauliflower, celery, corn, cucumbers, eggplant, escarole, kale, lettuce, onions, peas, peppers, potatoes, radishes, spinach, sweetpotatoes, and tomatoes.

The ratio of the volume used each month to total domestic unloads varied generally from 85 to 95 percent. Some of the minor commodities were not used in the computations. Their inclusion would make little difference in the average value per car.

**END**