



AgEcon SEARCH
RESEARCH IN AGRICULTURAL & APPLIED ECONOMICS

The World's Largest Open Access Agricultural & Applied Economics Digital Library

This document is discoverable and free to researchers across the globe due to the work of AgEcon Search.

Help ensure our sustainability.

Give to AgEcon Search

AgEcon Search
<http://ageconsearch.umn.edu>
aesearch@umn.edu

*Papers downloaded from **AgEcon Search** may be used for non-commercial purposes and personal study only. No other use, including posting to another Internet site, is permitted without permission from the copyright owner (not AgEcon Search), or as allowed under the provisions of Fair Use, U.S. Copyright Act, Title 17 U.S.C.*

California Department of Food and Agriculture

Agricultural Commissioners' Crop Reports

Lassen County

2010-2014

2010 Annual Crop & Livestock report



Lassen County

Department of Agriculture

Our Mission

The Agriculture Commissioner promotes Lassen County agriculture production by protecting it from injurious pests & diseases, to ensure the safety and wholesomeness of food and other products for the consumer, and to build consumer and business confidence in the market place through the maintenance of equity.

Personnel

Craig Hemphill, *Interim Agricultural Commissioner, Sealer/Deputy Sealer*

Tina Hilburn, *Agricultural Biologist II*

Dan E. McDonald, *Building & Weed Spray Foreman/Maintenance*

Cheryl Lauritsen, *Agricultural Biologist I*

Lysandra Lilburn, *Seasonal*

Robin Skeleton, *Seasonal*

Al Howe, *Seasonal*

Kim Olson, *Seasonal*

Dorothy Earll, *Seasonal*

Red Shepherd, *Seasonal*



Lassen County

Board of Supervisors

Bob Pyle, Chairman

District 1

Jim Chapman

District 2

Larry Wosick

District 3

Brian Dahle

District 4

Jack Hansen

District 5

County of Lassen



Department of Agriculture

• AGRICULTURE

• WEIGHTS & MEASURES

• PREDATORY ANIMAL CONTROL

November 1, 2011

KAREN ROSS, SECRETARY
CALIFORNIA DEPARTMENT OF FOOD & AGRICULTURE
AND
THE HONORABLE BOARD OF SUPERVISORS
LASSEN COUNTY

Craig A. Hemphill
Interim Agricultural Commissioner
Sealer of Weights & Measures
175 Russell Ave.
Susanville, CA 96130

Telephone: (530)251-8110

Fax: (530)251-2726

Email: agcommissioner@co.lassen.ca.us

In accordance with Section 2279 of the California Food and Agriculture Code, we are pleased to submit our annual crop report representing the production and value of crops produced in Lassen County during the 2010 calendar year.

This report is a summary estimate of the acreage, production and gross value of Lassen County agricultural products. **The values presented in this report are gross values only, and do not reflect net farm income or costs of production and marketing.**

Though the overall economy is struggling, favorable weather conditions and high livestock and hay prices brought the estimated gross crop values up to \$74,500,023, a 7.8% increase over the 2009 gross value of \$69,091,938.

Hay remained the top ranking crop in Lassen County with the acreage remaining stable and prices remaining high. However, the overall hay production decreased by 13%, possibly due to a cold spring and wet conditions during harvest resulting in a 10% decline below the 2009 value.

High cattle and sheep prices brought higher numbers of livestock to Lassen County resulting in a 30% value increase over 2009.

An increase in strawberry plant acreage and the overall timber harvest also brought up the value of agriculture in Lassen County.

Offsetting these increases was a decrease in the planted acres of alfalfa seed, garlic seed and wild rice resulting in a 32% value decrease in alfalfa seed, a 49% value decrease in garlic seed and a 60% value decrease in wild rice.

A special thank you is extended to the many producers and agencies, both private and governmental, and to Cheryl Lauritsen, Department Biologist, for their efforts in the compilation of this report.

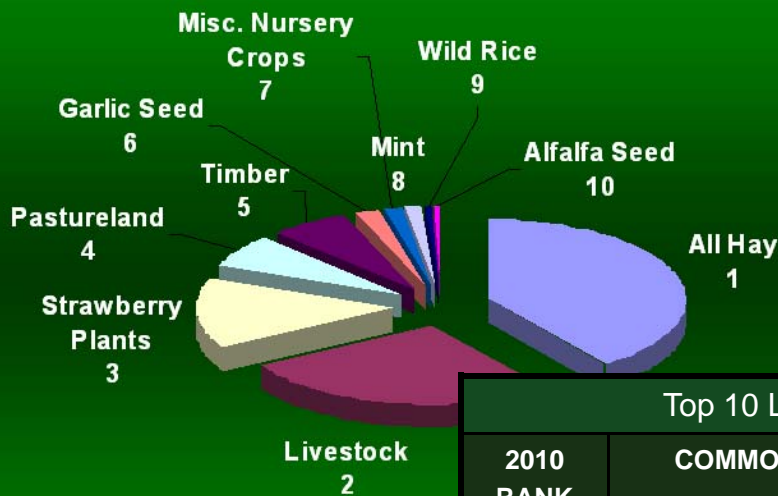
Respectfully submitted,

Craig A. Hemphill,
Interim Agricultural Commissioner/Sealer
Deputy Seal

Million Dollar Crops



TOP 10 LASSEN COUNTY CROPS



Top 10 Lassen County Crops

2010 RANK	COMMODITY	VALUE	2009 RANK
1	All Hay	\$29,251,080	1
2	Livestock	\$19,596,755	2
3	Strawberry Plants	\$10,537,590	3
4	Pastureland	\$4,873,859	4
5	Timber	\$4,686,859	5
6	Garlic Seed	\$1,559,800	6
7	Misc. Nursery Crops	\$1,000,000	8
8	Mint	\$985,230	9
9	Wild Rice	\$428,655	10
10	Alfalfa Seed	\$375,784	7

FIELD CROPS							
CROP	YEAR	ACRES HARVESTED	PRODUCTION PER ACRE	PRODUCTION UNIT	PRODUCTION TOTAL	VALUE PER UNIT	TOTAL VALUE
Hay, Alfalfa	2010	27,000	3.6	Ton	96,120	\$134.00	\$12,880,080
	2009	27,000	4.5	Ton	121,500	\$116.40	\$14,142,600
Hay, Triticale	2010	4,500	4.0	Ton	18,000	92.50	1,665,000
	2009	4,500	4.5	Ton	20,250	98.00	1,984,500
Hay, Grain	2010	4,200	3.0	Ton	12,600	90.00	1,134,000
	2009	4,200	2.3	Ton	9,702	140.00	1,358,280
Hay, Other	2010	29,000	4.0	Ton	116,000	117.00	13,572,000
	2009	29,000	4.4	Ton	126,150	121.00	15,264,150
Barley	2010	150	1.5	Ton	225	135.55	30,499
	2009	356	2.0	Ton	712	160.00	113,920
Oats	2010	117	2.0	Ton	234	189.71	44,392
	2009	441	2.3	Ton	992	160.00	158,720
Rye	2010	447	2.0	Ton	894	195.00	174,330
	2009	506	2.0	Ton	1,012	130.00	131,560
Wheat	2010	550	1.5	Ton	825	179.55	148,129
	2009	500	1.8	Ton	875	175.00	153,125
Triticale	2010	550	1.5	Ton	825	195.00	160,875
	2009	550	1.8	Ton	963	200.00	192,600
Pasture (irrigated)	2010	23,000	6.0	AUM	138,000	22.00	3,036,000
	2009	23,000	6.0	AUM	138,000	22.00	3,036,000
Pasture (non-irrigated)	2010	22,000	0.4	AUM	8,800	18.00	158,400
	2009	22,000	0.4	AUM	8,800	18.00	158,400
Pasture (range)	2010	1,291,253	0.1	AUM	129,125	13.00	1,678,625
	2009	1,291,253	0.1	AUM	129,125	13.00	1,678,625
Aftermath (stubble-all)	2010	20,000	1.0	AUM	20,000	23.00	460,000
	2009	20,000	1.0	AUM	20,000	23.00	460,000
Straw	2010	225	1.0	Ton	225	80.00	18,000
	2009	225	1.0	Ton	225	80.00	18,000
Total	2010						\$35,160,330
	2009						\$38,850,480



YORK RANCH 1912

Photo courtesy of Tim Purdy

SEED, FRUIT, VEGETABLE AND NURSERY CROPS							
CROP	YEAR	HARVESTED	PER	PRODUCTION	PRODUCTION	VALUE PER	TOTAL VALUE
		ACREAGE	ACRE	UNIT	TOTAL	UNIT	
Alfalfa Seed	2010	214	878.00	Lbs.	187892.0	\$2.00	\$375,784
	2009	436	825.00	Lbs.	359700.0	\$1.75	\$629,475
Strawberry Plants	2010	285	266.00	PI/M	75810.0	139.00	10,537,590
	2009	260	312.50	PI/M	81250.0	87.50	7,109,375
Garlic Seed	2010	421	9.50	Tons	3999.5	400.00	1,599,800
	2009	747	9.50	Tons	7096.5	440.00	3,122,460
Mint	2010	615	89.00	Lbs.	54735.0	18.00	985,230
	2009	674	80.00	Lbs.	53920.0	18.00	970,560
Wild Rice	2010	697	1500.00	Lbs.	1045500.0	0.41	428,655
	2009	835	1850.00	Lbs.	1544750.0	0.70	1,081,325
Misc. Crops (apples, endive, strawberries, raspberry plants, peaches, misc. vegetables & greenhouse flowers)	2010						1,000,000
	2009						1,000,000
Total	2010						\$14,927,059
	2009						\$13,913,195

*Plants in units of 1,000

DATA FROM 50 YEARS AGO (1960)

VEGETABLE CROPS: ACREAGE, PRODUCTION, AND VALUE							
Crop	Year	Harvested		Production		Value	
		Acreage	Per Acre	Unit	Total	Per Unit	Total
Potatoes	1960	12	18.16	ton	218	\$45.00	\$9,810
	1959	20	10	ton	200	40.00	\$8,000
Garlic	1960	28.9	5888.61	lbs	170181	0.21	35,738
	1959	6	3733.30	lbs/	2400	0.30	6,720
Total	1960						\$45,548
	1959						\$14,720
NURSERY STOCK							
Crop	Year	Harvested		Production		Value	
		Acreage	Per Acre	Unit	Total	Per unit	Total
Strawberry	1960	32	312000	M	9984000	\$12.00	\$119,808.00

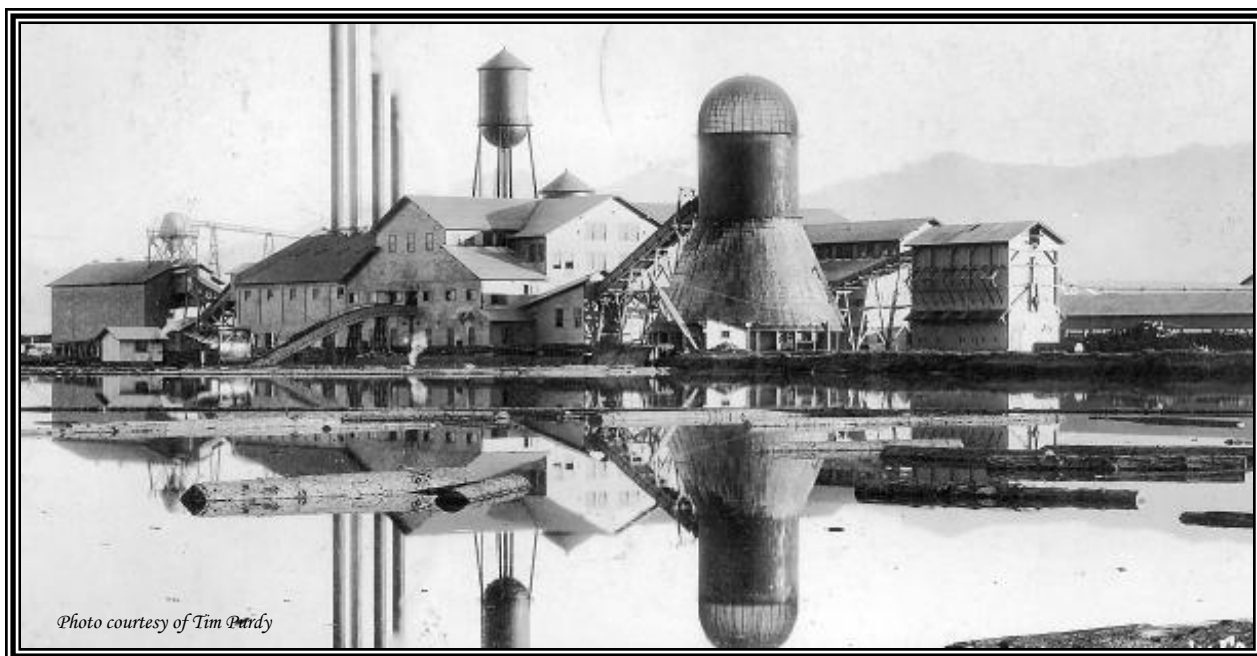
LIVESTOCK & POULTRY						
COMMODITY	YEAR	# OF HEAD	LIVEWEIGHT	UNIT	VALUE	
					PER UNIT	TOTAL VALUE
Cows	2010	6,250	62,500	Cwt.	55	\$3,460,625
	2009	4,950	49,500	Cwt.	38	\$1,881,000
Calves	2010	5,250	23,625	Cwt.	116	2,749,005
	2009	3,950	17,775	Cwt.	101	1,795,275
Heifers	2010	6,000	45,000	Cwt.	97	4,363,200
	2009	5,841	35,046	Cwt.	87	3,061,969
Steers	2010	8,500	63,750	Cwt.	97	6,181,200
	2009	8,330	49,980	Cwt.	97	4,833,566
Bulls	2010	1,250	21,875	Cwt.	65	1,430,406
	2009	1,000	17,500	Cwt.	54	938,000
Sheep/Lambs	2010	10,250	12,300	Cwt.	110	1,352,139
	2009	7,500	9,975	Cwt.	99	989,620
Hogs/Pigs	2010	200	500	Cwt.	60	30,200
	2009	200	500	Cwt.	44	21,925
Misc. Livestock	2010					30,000
(bison, pheasant, goats, chickens, emu, alpaca)	2009					30,000
Total		2010				\$19,596,775
		2009				\$13,551,355



Sample of wool pelts from Lassen
County sheep.



LIVESTOCK PRODUCTS		
COMMODITY	YEAR	TOTAL
Includes wool, eggs	2010	\$129,000
apiary & emu	2009	\$128,000
Total		2010
		\$129,000
		2009
		\$128,000



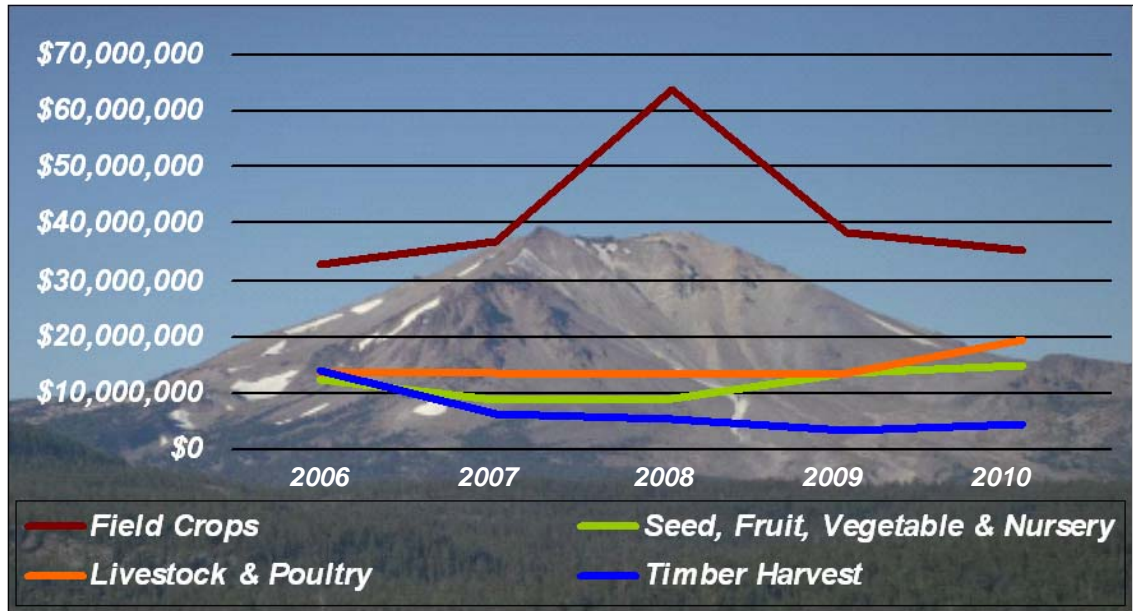
TIMBER HARVEST					
COMMODITY	YEAR	PRODUCTION	UNIT	VALUE	TOTAL
*Saw Timber	2010	47,418	NET MBF	\$98.84	\$3,391,085
	2009	31,015	NET MBF	\$61.20	\$1,898,056
*Misc. (posts, poles, cull logs, fire	2010				1,295,774
wood, Christmas trees, wood	2009				1,394,550
produced fuel chips)					
Total	2010				\$4,686,859
	2009				\$3,292,606

*Figures provided by the Timber Tax Division, California State Board of Equalization

The Fernley & Lassen Railroad, built in 1913, can be credited with development of the timber industry in Lassen County. Red River Lumber was the first of several sawmills to be established in the area. Recognized for establishing the town of Westwood to support its huge logging operation, it was the largest electrical sawmill of its time. Eventually the Lassen Lumber and Box Company and Fruit Growers Company saw mills were built in Susanville where they operated for several decades. In May of 2007, the last sawmill in Lassen County, owned and operated by Sierra Pacific Industries, was closed down due to lack of available timber.

Sierra Pacific Industries and Fruit Growers Supply Company still have logging operations in Lassen County along with W. M. Beaty and Associates, Inc. although all of their logs are shipped to mills in other areas.

5 YEAR SUMMARY OF PRODUCTION VALUES



10 YEAR COMPARATIVE PRODUCTION VALUES

2010	\$74,500,023
2009	\$69,091,938
2008	\$91,271,732
2007	\$65,633,696
2006	\$73,084,152
2005	\$67,549,795
2004	\$60,996,895
2003	\$55,186,474
2002	\$62,119,258
2001	\$58,858,424



ANNUAL SUSTAINABLE AGRICULTURE REPORT 2010

ORGANIC FARMING STATISTICS

Alfalfa Hay	1198.5	Acres Certified
Asparagus	24.5	Acres Certified
Endive	23.8	Acres Certified
Hairy Vetch/Triticale	29	Acres Certified
Pasture & Rangeland	3500	Acres Certified
Quinoa	7.7	Acres Certified
Spring Wheat	27	Acres Certified
Triticale Hay	141	Acres Certified
Cattle	2138	Certified Organic (# of head)

PEST ERADICATION

NET ACRES

Scotch thistle	Chemical	1353
Musk thistle	Chemical	44.5
Squarrose knapweed	Chemical	79.5
Spotted knapweed	Chemical/Mechanical	484.9
Dalmatian toadflax	Chemical/Mechanical/Biological	115.61
Yellow starthistle	Chemical/Mechanical	83.54
Tall whitetop	Chemical	824.32
Wavyleaf thistle	Chemical	2.5
Diffuse knapweed	Chemical	0.5
Puncturevine	Chemical/ Biological	18.48
Rush skeletonweed	Chemical	6.83
Russian knapweed	Chemical	343.26
Leafy spurge	Chemical	0.56
Purple starthistle	Chemical	1.6

PEST EXCLUSION

Exotic Pests
and/or Target Pests

Incoming plant material
via UPS Air, Truck or Mail

100 Shipments
Inspected

PEST DETECTION

Gypsy Moth	110 Traps in Lassen County	None Detected
Japanese Beetle	2 Traps in Lassen County	None Detected
European Grapevine Moth	110 Traps in Lassen County	None Detected

2011

Lassen County



Annual Crop & Livestock Report

Lassen County

Department of Agriculture

Our Mission

The Agriculture Commissioner promotes Lassen County agriculture production by protecting it from injurious pests & diseases, to ensure the safety and wholesomeness of food and other products for the consumer, and to build consumer and business confidence in the market place through the maintenance of equity.

PERSONNEL

Joe Moreo, *Agriculture Commissioner*

Craig Hemphill, *Deputy Sealer*

Tina Hilburn, *Deputy Agriculture Commissioner*

Cheryl Lauritsen, *Biologist II*

Josh Huffman, *Weed Spray Foreman*

Robin Skelton-Snipes, *Seasonal*

Kim Olson, *Seasonal*

Lysandra Lilburn, *Seasonal*

Red Shepherd, *Seasonal*

Todd Anderson, *Seasonal*

Bob Brinkman, *Seasonal*

Chase Sherman, *Seasonal*

Lassen County

Board of Supervisors

Jim Chapman, Chairman, District 2

Bob Pyle, District 1

Brian Dahle, District 4

Larry Wosick, District 3

Jack Hansen, District 5



Department of Agriculture

•AGRICULTURE

•WEIGHTS & MEASURES

•PREDATORY ANIMAL CONTROL

Joe Moreo
Agriculture Commissioner
Sealer of Weights and Measures
175 Russell Avenue
Susanville, Ca 96130-4215

☎Telephone (530) 251-8110
Fax (530) 251-2726

email: agcommissioner@co.lassen.ca.us

August 15, 2012

Karen Ross, Secretary

California Department of Food and Agriculture

And

The Honorable Lassen County Board of Supervisors

Pursuant to Section 2272 & Section 2279 of the California Food and Agricultural Code, I am pleased to submit the 2011 Annual Crop Report for Lassen County.

This report lists gross production and value of products and does not reflect net income to the producer. The value of agricultural products produced in Lassen County for 2011 was \$101,712,856. This represents an overall increase of 36% over 2010. The increase was due primarily to increased prices for livestock and hay crops.

I wish to express my sincere appreciation to the members of my staff for their efforts in collecting and compiling this report and to the many farmers, ranchers, and governmental agencies who provided the information which made this report possible.

Respectfully submitted,

A handwritten signature in black ink, appearing to read "Joe Moreo".

Joseph A Moreo, Agricultural Commissioner

FIELD CROPS							
CROP	YEAR	ACRES HARVESTED	PRODUCTION PER ACRE	UNIT	VALUE PER	PRODUCTION TOTAL	TOTAL VALUE
Hay, Alfalfa	2011	27,000	4.5	Ton	\$207.50	120,150	\$24,931,125
	2010	27,000	3.6	Ton	\$134.00	96,120	\$12,880,080
*Hay, Triticale	2011	~	~	~	~	~	~
	2010	4,500	4.0	Ton	92.50	18,000	1,665,000
Hay, Grain	2011	8,700	2.4	Ton	160.32	20,800	3,334,656
	2010	4,200	3.0	Ton	90.00	12,600	1,134,000
Hay, Other	2011	29,000	3.4	Ton	214.00	99,180	21,224,520
	2010	29,000	4.0	Ton	117.00	116,000	13,572,000
**Barley	2011			Ton			
	2010	150	1.5	Ton	135.55	225	30,499
**Oats	2011			Ton			
	2010	117	2.0	Ton	189.71	234	44,392
**Rye	2011			Ton			
	2010	447	2.0	Ton	195.00	894	174,330
Wheat	2011	2020	1.6	Ton	193.33	3232	624,843
	2010	550	1.5	Ton	179.55	825	148,129
***Triticale	2011			Ton			
	2010	550	1.5	Ton	195.00	825	160,875
Pasture (irrigated)	2011	23,000	6.0	AUM	22.00	138,000	3,036,000
	2010	23,000	6.0	AUM	22.00	138,000	3,036,000
Pasture (non-irrigated)	2011	22,000	0.4	AUM	18.00	8,000	158,000
	2010	22,000	0.4	AUM	18.00	8,800	158,400
Pasture (range)	2011	1,291,253	0.1	AUM	13.00	129,125	1,678,625
	2010	1,291,253	0.1	AUM	13.00	129,125	1,678,625
Aftermath (stubble-all)	2011	20,000	1.0	AUM	23.00	20,000	460,000
	2010	20,000	1.0	AUM	23.00	20,000	460,000
Straw	2011		1.0	Ton	80.00	225	18,000
	2010	225	1.0	Ton	80.00	225	18,000
Total	2011						\$55,465,769
	2010						\$35,160,330

*2011 totals for triticale are included in Grain Hay

**2011 information not available

***2011 totals for triticale grain are included in Wheat

SEED, FRUIT, VEGETABLE AND NURSERY CROPS

CROP	YEAR	HARVESTED ACREAGE	PRODUCTION PER ACRE	PRODUCTION UNIT	PRODUCTION TOTAL	VALUE PER UNIT	TOTAL VALUE
*Alfalfa Seed	2011	198					
	2010	214	878	Lbs.	187892	\$2.00	\$375,784.00
*Strawberry Plants	2011	363.5					
	2010	285	266	PI/M*	75810	139.00	10,537,590
*Garlic Seed	2011	118					
	2010	421	10	Tons	4000	400.00	1,599,800
*Mint	2011	455					
	2010	615	89	Lbs.	54735	18.00	985,230
*Wild Rice	2011						
	2010	447	1500	Lbs.	670500	0.45	301,725
Misc. Crops (alfalfa seed, apples, asparagus, endive, garlic seed, strawberries plants, raspberry rootstock, peaches, mint, wild rice and misc. vegetables & greenhouse flowers)	2011						9,700,000
	2010						1,000,000
Total	2011						\$10,000,000
	2010						\$14,800,129

* The 2011 figures are included in the Misc. Crops category as there were 3 producers or less

LIVESTOCK & POULTRY						
COMMODITY	YEAR	# OF HEAD	LIVEWEIGHT	UNIT	PER UNIT	TOTAL
Cows	2011	6,188	61,880	Cwt.	85.20	\$5,272,176
	2010	6,250	62,500	Cwt.	55.37	\$3,460,625
Calves	2011	5,197	23,386	Cwt.	124.00	2,899,864
	2010	5,250	23,625	Cwt.	116.36	2,749,005
Heifers	2011	5,940	44,550	Cwt.	115.63	5,151,317
	2010	6,000	45,000	Cwt.	96.96	4,363,200
Steers	2011	8,415	63,113	Cwt.	115.63	7,297,756
	2010	8,500	63,750	Cwt.	96.96	6,181,200
Bulls	2011	1,188	20,790	Cwt.	85.20	1,771,308
	2010	1,250	21,875	Cwt.	65.39	1,430,406
Sheep/Lambs	2011	10,250	12,300	Cwt.	121.00	1,488,300
	2010	10,250	12,300	Cwt.	109.93	1,352,139
Hogs/Pigs	2011	200	500	Cwt.	65.23	32,615
	2010	200	500	Cwt.	60.40	30,200
Misc. Livestock	2011					30,000
(bison, pheasant, goats, chickens, emu, alpaca)	2010					30,000
Total	2011					\$23,943,336
	2010					\$19,596,775

LIVESTOCK PRODUCTS		
COMMODITY	YEAR	TOTAL
Includes:	2011	\$129,000
wool, apiary, eggs, rabbits, emus	2010	\$129,000
Total	2011	\$129,000
	2010	\$129,000

TIMBER HARVEST					
COMMODITY	YEAR	PRODUCTION	UNIT	VALUE	TOTAL
*Saw Timber	2011	45,381	NET MBF	\$211.39	\$9,593,180
	2010	47,418	NET MBF	\$98.84	\$4,686,859
*Misc. (posts, poles, cull logs, fire wood, Christmas trees, wood produced fuel chips)	2011				\$2,579,560
	2010**				
Total	2011				\$12,172,740
	2010				\$4,686,859

*Figures provided by the Timber Tax Division, California State Board of Equalization

**Information not available

SUMMARY OF PRODUCTION VALUES		
COMMODITY GROUP	2011	2010
Field Crops	\$55,465,769	\$35,160,330
Seed, Fruit, Vegetable & Nursery	10,000,000	14,800,129
Livestock & Poultry	23,943,336	19,596,755
Livestock & Poultry Products	129,000	129,000
Timber Harvest	12,172,740	4,686,859
Total	\$101,712,856	\$74,373,073

TOP LASSEN COUNTY CROPS				
2011				
RANK	COMMODITY	VALUE	2010 RANK	
1	All Hay	\$49,490,301	1	
2	Livestock	\$23,943,336	2	
3	Timber	\$12,172,740	5	
4	Misc. Nursery Crops	\$10,000,000	7	
5	Pastureland	\$4,873,859	4	
6	Wheat/Triticale Grain	\$624,843	~	
7	Livestock Products	\$129,000	~	

FIVE YEAR SUMMARY OF PRODUCTION VALUES						
YEAR	FIELD CROPS	SEED, FRUIT, VEGETABLE & NURSERY	LIVESTOCK & POULTRY	LIVESTOCK PRODUCTS	TIMBER HARVEST	TOTAL
2011	55,465,769	10,000,000	23,943,336	129,000	12,172,740	\$101,712,856
2010	35,160,330	14,800,129	19,596,775	129,000	4,686,859	\$74,500,023
2009	38,617,632	13,501,907	13,551,355	128,000	3,292,606	\$69,091,500
2008	63,666,321	9,233,174	13,183,022	125,000	5,217,315	\$91,424,832
2007	37,062,950	8,734,400	13,642,830	125,000	6,068,516	\$65,633,696

10 YEAR COMPARATIVE PRODUCTION VALUES	
2011	\$101,712,856
2010	\$74,500,023
2009	\$69,091,500
2008	\$91,424,832
2007	\$65,633,696
2006	\$73,084,152
2005	\$67,549,795
2004	\$60,996,895
2003	\$55,186,474
2002	\$62,119,258

ANNUAL SUSTAINABLE AGRICULTURE REPORT 2011

ORGANIC FARMING STATISTICS		
Alfalfa Hay	1090	Acres Certified
Asparagus	24.5	Acres Certified
Endive	40	Acres Certified
Triticale	29	Acres Certified
Pasture & Rangeland	155,000	Acres Certified
Wheat	38.4	Acres Certified
Triticale Hay	160	Acres Certified
Australian Winter Pea	75.4	Acres Certified
Fallow Ground	79.7	Acres Certified
Cattle	1000	Certified Organic (# of head)

Pest Eradication

Net Acres

Scotch thistle	Chemical/Mechanical	175.98
Dalmatian toadflax	Chemical/Mechanical/Biological	18.16
Spotted knapweed	Chemical/Mechanical	9.8
Squarrose knapweed	Chemical	37.72
Leafy spurge	Chemical	0.5
Musk thistle	Chemical	2.94
Russian knapweed	Chemical/Biological	42.69
Yellow starthistle	Chemical/Mechanical	53.88
Tall whitetop	Chemical	31.81
Mediterranean sage	Chemical	10.38
Hoary cress	Chemical	0.89
Puncturevine	Chemical	51.28
Canada thistle	Chemical	8.08
Dyer's woad	Chemical	8.61

Pest Exclusion

Exotic Pests and/or
Target Pests

Incoming pland material
via UPS, Air, Truck or Mail

100 Shipments
Inspected

Pest Detection

Gypsy Moth	110 Traps in Lassen County	None Detected
Japanese Beetle	2 Traps in Lassen County	None Detected
European Grapevine Moth	110 Traps in Lassen County	None Detected

2012

Lassen County



Annual Crop & Livestock Report

Lassen County

Department of Agriculture



Our Mission

The Agriculture Commissioner promotes Lassen County agriculture production by protecting it from injurious pests & diseases, to ensure the safety and wholesomeness of food and other products for the consumer, and to build consumer and business confidence in the market place through the maintenance of equity.

PERSONNEL

Joe Moreo, *Agriculture Commissioner*

Craig Hemphill, *Deputy Sealer*

Tina Hilburn, *Deputy Agriculture Commissioner*

Cheryl Lauritsen, *Biologist*

Kim Olson, *Weed Spray Foreman*

Robin Skelton-Snipes, *Seasonal*

Dan Loeffelholz, *Seasonal*

Lysandra Lilburn, *Seasonal*

Red Shepherd, *Seasonal*

Isaiah Jimenez, *Seasonal*

Lassen County

Board of Supervisors

Brian Dahle, Chairman, District 4

Bob Pyle, District 1

Jim Chapman, District 2

Larry Wosick, District 3

Jack Hansen, District 5

County of Lassen



Department of Agriculture

•AGRICULTURE

•WEIGHTS & MEASURES

•PREDATORY ANIMAL CONTROL

Joe Moreo
Agriculture Commissioner
Sealer of Weights and Measures
175 Russell Avenue
Susanville, Ca 96130-4215

☎Telephone (530) 251-8110
Fax (530) 251-2726

email: agcommissioner@co.lassen.ca.us

August 6, 2013

Karen Ross, Secretary
California Department of Food and Agriculture
And
The Honorable Lassen County Board of Supervisors

Pursuant to Section 2272 & Section 2279 of the California Food and Agriculture Code, I am pleased to submit the 2012 Annual Crop Report for Lassen County.

This report lists gross production and value of products and does not reflect net income to the producer. The value of agricultural products produced in Lassen County for 2012 was \$101,633,576. An increase in wild rice acreage and higher beef prices offset economic losses due to lower hay prices, resulting in an overall decrease of only .08% from 2011.

I wish to express my sincere appreciation to the members of my staff for their efforts in collecting and compiling this report and to the many farmers, ranchers and governmental agencies who provided the information which made this report possible.

Respectfully submitted,

A handwritten signature in dark ink, appearing to read "Joe Moreo", is written over a horizontal dashed line.

Joseph A. Moreo, Agricultural Commissioner

FIELD CROPS

CROP	YEAR	ACRES HARVESTED	PRODUCTION PER ACRE	UNIT	VALUE PER	PRODUCTION TOTAL	TOTAL VALUE
Hay, Alfalfa	2012	28,680	3.5	Ton	\$ 210.00	100,380	\$21,079,800
	2011	27,000	4.5	Ton	207.50	120,150	24,931,125
Hay, Grain	2012	8,354	2.6	Ton	136.00	21,720	2,953,920
	2011	8,700	2.4	Ton	160.32	20,800	3,334,656
Hay, Other	2012	31,025	3.6	Ton	197.00	111,690	22,002,930
	2011	29,000	3.4	Ton	214.00	99,180	21,224,520
Wheat	2012	2779	1.1	Ton	227.46	3057	695,345
	2011	2020	1.6	Ton	193.33	3232	624,843
Pasture (irrigated)	2012	23000	6	AUM	22.00	138,000	3,036,000
	2011	23,000	6.0	AUM	22.00	138,000	3,036,000
Pasture (non-irrigated)	2012	22,000	0.0	AUM	18.00	8,000	158,000
	2011	22,000	0.0	AUM	18.00	8,000	158,000
Pasture (range)	2012	1,291,253	0.1	AUM	13.00	129,125	1,678,625
	2011	1,291,253	0.1	AUM	13.00	129,125	1,678,625
Aftermath (stubble-all)	2012	20,000	1.0	AUM	23.00	20,000	460,000
	2011	20,000	1.0	AUM	23.00	20,000	460,000
Straw	2012	225	1.0	Ton	80.00	225	18,000
	2011	225	1.0	Ton	80.00	225	18,000
Total	2012						\$52,082,620
	2011						\$55,465,769

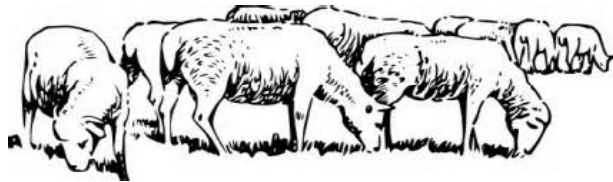
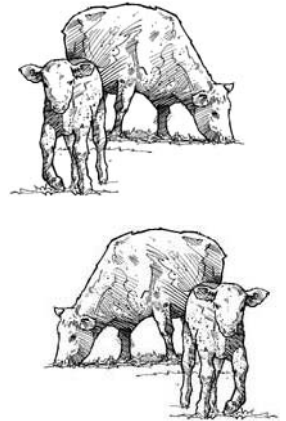


SEED, FRUIT, VEGETABLE AND NURSERY CROPS

CROP	YEAR	HARVESTED ACREAGE	PRODUCTION PER ACRE	PRODUCTION UNIT	PRODUCTION TOTAL	VALUE PER UNIT	TOTAL VALUE
*Alfalfa Seed	2012	203	396	lbs.	80,388	\$2.18	\$17,525
	2011	198		Lbs.			
*Strawberry Plants	2012	239					
	2011	363.5		PI/M*			
*Garlic Seed	2012	155					
	2011	118		Tons			
*Mint	2012	400					
	2011	455		Lbs.			
**Wild Rice	2012	1709	1350	Lbs.	2,307,150	.72/green lb	1,661,148
	2011	500		Lbs.			
Misc. Crops (alfalfa seed, apples, asparagus, endive, garlic seed, strawberries plants, raspberry rootstock, peaches, mint, wild rice, misc. vegetables & greenhouse flowers)	2012						9,700,000
	2011						9,700,000
Total	2012						\$11,378,673
	2011						\$10,000,000

LIVESTOCK & POULTRY

COMMODITY	YEAR	# OF HEAD	LIVEWEIGHT	UNIT	PER UNIT	TOTAL
Cows	2012	6,064	60,640	Cwt.	\$65	\$3,962,824
	2011	6,188	61,880	Cwt.	85.20	\$5,272,176
Calves	2012	5,093	26,685	Cwt.	160.39	4,280,007
	2011	5,197	23,386	Cwt.	124.00	2,899,864
Heifers	2012	6,059	45,445	Cwt.	123.09	5,593,825
	2011	5,940	44,550	Cwt.	115.63	5,151,317
Steers	2012	8,415	63,113	Cwt.	128.62	8,117,594
	2011	8,415	63,113	Cwt.	115.63	7,297,756
Bulls	2012	1,164	20,370	Cwt.	83.24	1,695,599
	2011	1,188	20,790	Cwt.	85.20	1,771,308
Sheep/Lambs	2012	10,240	12,288	Cwt	108.45	1,332,634
	2011	10,250	12,300	Cwt.	121.00	1,488,300
Hogs/Pigs	2012	200	500	Cwt	66.67	33,335
	2011	200	500	Cwt	60.40	30,200
Misc. Livestock (bison, pheasant, goats, chickens, emu, alpaca)	2012					30,000
	2011					30,000
Total						\$25,045,818
						\$23,973,536



LIVESTOCK PRODUCTS

COMMODITY	YEAR	TOTAL
Includes:	2012	\$129,000
wool, apiary, eggs, rabbits, emus	2011	\$129,000
Total		
	2012	\$129,000
	2011	\$129,000

TIMBER HARVEST

COMMODITY	YEAR	PRODUCTION	UNIT	VALUE	TOTAL
*Saw Timber	2012	74,433	NET MBF	\$174.62	\$12,997,465
	2011	45,381	NET MBF	\$211.39	\$9,593,180
Total					
	2012	74,433	NET MBF	\$174.62	\$12,997,465
	2011	45,381	NET MBF	\$211.39	\$9,593,180

* Figures provided by the Timber Tax Division, California State Board of Equalization



SUMMARY OF PRODUCTION VALUES		
COMMODITY GROUP	2012	2011
Field Crops	52,082,620	\$55,465,769
Seed, Fruit, Vegetable & Nursery	11,378,673	10,000,000
Livestock & Poultry	25,045,818	23,943,336
Livestock & Poultry Products	129,000	129,000
Timber Harvest	12,997,465	12,172,740
Total	101653576	\$101,712,856

TOP LASSEN COUNTY CROPS			
2012 RANK	COMMODITY	VALUE	2011 RANK
1	All Hay	\$46,036,650	1
2	Livestock	\$25,045,818	2
3	Timber	\$12,997,465	3
4	Misc. Nursery Crops	\$9,700,000	4
5	Pastureland	\$4,872,625	5
6	Wild Rice	\$1,661,148	~
7	Livestock Products	\$129,000	~

FIVE YEAR SUMMARY OF PRODUCTION VALUES						
YEAR	FIELD CROPS	SEED, FRUIT, VEGETABLE & NURSERY	LIVESTOCK & POULTRY	LIVESTOCK PRODUCTS	TIMBER HARVEST	TOTAL
2012	52,082,620	11,378,673	25,045,818	129,000	12,997,465	101,653,576
2011	55,465,769	10,000,000	23,943,336	129,000	12,172,740	\$101,712,856
2010	35,160,330	14,800,129	19,596,775	129,000	4,686,859	\$74,500,023
2009	38,617,632	13,501,907	13,551,355	128,000	3,292,606	\$69,091,500
2008	63,666,321	9,233,174	13,183,022	125,000	5,217,315	\$91,424,832

10 YEAR COMPARATIVE PRODUCTION VALUES	
2012	\$101,653,576
2011	\$101,712,856
2010	\$74,500,023
2009	\$69,091,500
2008	\$91,424,832
2007	\$65,633,696
2006	\$73,084,152
2005	\$67,549,795
2004	\$60,996,895
2003	\$55,186,474

ANNUAL SUSTAINABLE AGRICULTURE REPORT 2012



ORGANIC FARMING STATISTICS

Alfalfa Hay	400	Acres Certified
Asparagus	24.5	Acres Certified
Endive	40	Acres Certified
Grain	118	Acres Certified
Pasture & Rangeland	7,000	Acres Certified
Wheat	760	Acres Certified
Safflower	46	Acres Certified
Fallow Ground	40.8	Acres Certified
Cattle	1000	Certified Organic (# of head)

Pest Eradication

Scotch thistle	Chemical/Mechanical	155.83
Dalmatian toadflax	Chemical/Mechanical/Biological	10.53
Spotted knapweed	Chemical/Mechanical	30.41
Diffuse knapweed	Chemical	0.55
Squarrose knapweed	Chemical	28.61
Leafy spurge	Chemical	0.23
Rush skeletonweed	Chemical	3.15
Musk thistle	Chemical	3
Russian knapweed	Chemical/Biological	48.12
Yellow starthistle	Chemical/Mechanical	43.74
Tall whitetop	Chemcial	68.73
Mediterranean sage	Chemcial	16.48
Hoary cress	Chemical	0.33
Puncturevine	Chemical	31.99
Canada thistle	Chemcial	10.23
Wavyleaf thistle	Chemcial	0.78
Dyer's woad	Chemical	13.73

Net Acres

Pest Exclusion

Exotic Pests and/or Target Pests	Incoming plant material via UPS, Air, Truck or Mail	100 Shipments Inspected
-------------------------------------	--	----------------------------

Pest Detection

Gypsy Moth	110 Traps in Lassen County	None Detected
Japanese Beetle	2 Traps in Lassen County	None Detected



THE END

2013

Lassen County



Annual Crop & Livestock Report

Lassen County Department of Agriculture

Our Mission

The Agriculture Commissioner promotes Lassen County agriculture production by protecting it from injurious pests & diseases, to ensure the safety and wholesomeness of food and other products for the consumer, and to build consumer and business confidence in the market place through the maintenance of equity.

PERSONNEL

Joe Moreo, *Agriculture Commissioner*

Craig Hemphill, *Deputy Sealer*

Tina Hilburn, *Deputy Agriculture Commissioner*

Cheryl Lauritsen, *Biologist*

Kim Olson, *Weed Spray Foreman*

Robin Skelton-Snipes, *Seasonal*

Todd Anderson, *Seasonal*

Melinda Parks, *Seasonal*

Tom Teter, *Seasonal*

Isaiah Jimenez, *Seasonal*

Lassen County Board of Supervisors

Jack Hansen, Chairman, District 5

Bob Pyle, District 1

Jim Chapman, District 2

Larry Wosick, District 3

Aaron Albaugh, District 4

County of Lassen



Department of Agriculture

•AGRICULTURE

•WEIGHTS & MEASURES

•PREDATORY ANIMAL CONTROL

Joe Moreo
Agriculture Commissioner
Sealer of Weights and Measures
175 Russell Avenue
Susanville, Ca 96130-4215

☎Telephone (530) 251-8110
Fax (530) 251-2726

email: agcommissioner@co.lassen.ca.us

November 14, 2014

Karen Ross, Secretary
California Department of Food and Agriculture
And
The Honorable Lassen County Board of Supervisors

Pursuant to Section 2272 & Section 2279 of the California Food and Agriculture Code, I am pleased to submit the 2013 Annual Crop Report for Lassen County.

This report lists gross production and value of products and does not reflect net income to the producer. The value of agricultural products produced in Lassen County for 2013 was \$124,021,851. This is a 22% increase over 2012 brought about by another increase in wild rice acreage along with higher beef and hay prices.

I wish to express my sincere appreciation to the members of my staff for their efforts in collecting and compiling this report and to the many farmers, ranchers and governmental agencies who provided the information which made this report possible.

Respectfully submitted,

A handwritten signature in dark ink, appearing to read "Joe Moreo", is written over a horizontal line.

Joseph A. Moreo, Agricultural Commissioner

FIELD CROPS

CROP	YEAR	PRODUCTION			VALUE PER UNIT	PRODUCTION TOTAL	TOTAL VALUE
		ACRES HARVESTED	PER ACRE	UNIT			
Hay, Alfalfa	2013	28,000	4.40	Ton	\$240.00	123,200	\$29,568,000.00
	2012	28,680	3.50	Ton	210.00	100,380	21,079,800.00
Hay, Grain	2013	10,000	2.30	Ton	157.69	23,000	3,626,870.00
	2012	8,354	2.60	Ton	136.00	21,720	2,953,920.00
*Hay, Other	2013	29,000	4.00	Ton	228.33	116,000	26,486,280.00
	2012	31,025	3.57	Ton	197.00	111,690	22,002,930.00
Wheat	2013	2,800	2.40	Ton	220.00	6,720	1,478,400.00
	2012	2,779	1.10	Ton	227.46	3,057	695,345.00
**Pasture (irrigated)	2013	23,000	6.00	AUM	35.00	138,000	4,830,000.00
	2012	23,000	6.00	AUM	35.00	138,000	4,830,000.00
**Pasture (non-irrigated)	2013	22,000	2.00	AUM	15.00	8,777	131,655.00
	2012	22,000	2.00	AUM	15.00	8,777	131,655.00
**Pasture (range)	2013	1,291,253	0.10	AUM	1.35	129,125	174,319.00
	2012	1,291,253	0.10	AUM	1.35	129,125	174,319.00
**Aftermath (stubble-all)	2013	20,000	1.00	AUM	23.00	20,000	460,000.00
	2012	20,000	1.00	AUM	23.00	20,000	460,000.00
Straw	2013	225	1.00	Ton	80.00	225	18,000.00
	2012	225	1.00	Ton	80.00	225	18,000.00
Total							66,773,524.00
							52,345,969.00

*Grass Alfalfa Mix, Grain Hay & Grass Hay

** 2012 figures corrected for accuracy



SEED, FRUIT, VEGETABLE AND NURSERY CROPS

CROP	YEAR	HARVESTED ACREAGE	PRODUCTION PER ACRE	PRODUCTION UNIT	PRODUCTION TOTAL	VALUE PER UNIT	TOTAL VALUE
Wild Rice	2013	2109	1325	Lbs.	2,794,425	.71/green lb.	\$1,984,042.00
	2012	1709	1350	Lbs.	2,307,150	.72/green lb.	\$1,661,148.00
Misc. Crops (alfalfa seed,	2013						\$16,437,500.00
apples, asparagus, endive,	2012						\$9,700,000.00
garlic seed, peaches, mint,							
canola, safflower, blue-							
berries, watermelon,							
strawberries, misc.							
vegetables & greenhouse							
flowers)							
Total							\$18,421,542.00
							\$11,361,148.00

* Strawberries & Mint moved to misc. crops due to 3 producers or less

LIVESTOCK & POULTRY						
COMMODITY	YEAR	# OF HEAD	LIVEWEIGHT	UNIT	PER UNIT	TOTAL
Cows	2013	6,000	60,000	Cwt.	\$90.00	\$5,400,000.00
	2012	6,064	60,640	Cwt.	65.00	\$3,941,600.00
Calves	2013	5,200	27,300	Cwt.	168.56	4,601,688.00
	2012	5,093	26,685	Cwt.	160.39	4,280,007.00
Heifers	2013	6,254	46,905	Cwt.	128.06	6,006,654.00
	2012	6,059	45,445	Cwt.	123.09	5,593,825.00
Steers	2013	8,500	63,750	Cwt.	132.00	8,415,000.00
	2012	8,415	63,113	Cwt.	128.62	8,117,594.00
Bulls	2013	1,100	19,250	Cwt.	90.00	1,732,500.00
	2012	1,164	20,370	Cwt.	83.24	1,695,599.00
Sheep/Lambs	2013	10,000	12,000	Cwt.	94.00	1,128,000.00
	2012	10,240	12,288	Cwt.	108.45	1,332,634.00
Misc. Livestock	2013					64,000.00
(bison, pheasant, goats, chickens, alpaca, hogs)	2012					63,335.00
Total		2013				\$27,347,842.00
		2012				\$25,024,594.00

*Hog totals for 2012 are included in the Misc. Livestock category



LIVESTOCK PRODUCTS		
COMMODITY	YEAR	TOTAL
Includes:	2013	\$129,000
wool, apiary, eggs, rabbits	2012	\$129,000
Total	2013	\$129,000
	2012	\$129,000



Photo courtesy of Sierra Pacific Industries

TIMBER HARVEST					
COMMODITY	YEAR	PRODUCTION	UNIT	VALUE	TOTAL
*Saw Timber	2013	59,995	NET MBF	\$189.18	\$11,349,943
	2012	74,433	NET MBF	\$174.62	\$12,997,465
Total	2013	59,995	NET MBF	\$189.18	\$11,349,943
	2012	74,433	NET MBF	\$174.62	\$12,997,465

* Figures provided by the Timber Tax Division, California State Board of Equalization

SUMMARY OF PRODUCTION VALUES

COMMODITY GROUP

2013

Field Crops	\$66,773,524
Seed, Fruit, Vegetable & Nursery	18,421,542
Livestock & Poultry	27,347,842
Livestock & Poultry Products	129,000
Timber Harvest	11,349,943

Total \$124,021,851

TOP LASSEN COUNTY CROPS

2013 RANK	COMMODITY	VALUE	2012 RANK
1	All Hay	\$59,681,150	1
2	Livestock	\$27,347,842	2
3	Misc. Nursery Crops	\$16,437,500	4
4	Timber	\$11,349,943	3
5	Pastureland	\$4,872,625	5
6	Wild Rice	\$1,661,148	6
7	Livestock Products	\$129,000	7

FIVE YEAR SUMMARY OF PRODUCTION VALUES

YEAR	FIELD CROPS	SEED, FRUIT, VEGETABLE & NURSERY	LIVESTOCK & POULTRY	LIVESTOCK PRODUCTS	TIMBER HARVEST	TOTAL
2013	66,773,524	18,421,542	27,347,842	129,000	11,349,943	\$124,021,851
2012	52,082,620	11,378,673	25,024,594	129,000	12,997,465	\$101,612,352
2011	55,465,769	10,000,000	23,943,336	129,000	9,593,180	\$101,710,856
2010	35,160,330	14,800,129	19,596,775	129,000	4,686,859	\$74,500,023
2009	38,617,632	13,501,907	13,551,355	128,000	3,292,606	\$69,091,500

10 YEAR COMPARATIVE PRODUCTION VALUES

2013	\$124,021,851.00
2012	\$101,612,352.00
2011	\$101,710,856.00
2010	\$74,500,023.00
2009	\$69,091,500.00
2008	\$91,424,832.00
2007	\$65,633,696.00
2006	\$73,084,152.00
2005	\$67,549,795.00
2004	\$60,996,895.00

ANNUAL SUSTAINABLE AGRICULTURE REPORT 2013

ORGANIC FARMING STATISTICS

Alfalfa Hay	1542	Acres Certified
Asparagus	24.5	Acres Certified
Endive	38	Acres Certified
Pasture & Rangeland	5,350	Acres Certified
Cattle	2028	# of Head Certified

CERTIFIED FARMER'S MARKET

Susanville is the home of Lassen County's only Certified Farmer's Market. Hosted by the Lassen Land and Trails Trust, it is held on Saturday mornings from 8-12, June through October.



Photos courtesy of Lassen Land and Trails Trust

PEST MANAGEMENT



Dalmatian toadflax

Mecinus janthinus is a stem boring weevil assisting in the control of Dalmatian toadflax. The adult weevil feeds on the foliage of the plant and the larval form feeds on the vascular tissues which reduces flowering and causes wilting of shoots.

Photo courtesy of California Department of Food and Agriculture

<u>Pest Eradication</u>	<u>Method of Control</u>	<u>Net Acres</u>
Scotch thistle	Chemical/Mechanical	176.46
Dalmatian toadflax	Chemical/Mechanical/Biological	10.14
Spotted knapweed	Chemical/Mechanical	15.66
Diffuse knapweed	Chemical	0.15
Squarrose knapweed	Chemical	48.25
Leafy spurge	Chemical	0.07
Rush skeletonweed	Chemical	1.08
Musk thistle	Chemical	1.78
Russian knapweed	Chemical/Biological	30.02
Yellow starthistle	Chemical/Mechanical	70.26
Tall whitetop	Chemical	31.49
Mediterranean sage	Chemical	21.84
Hoary cress	Chemical	4.71
Puncturevine	Chemical	43.78
Canada thistle	Chemical	3.77
Wayleaf thistle	Chemical	0.13
Dyer's woad	Chemical	5.04
<u>Pest Exclusion</u>		
Exotic Pests and/or	Incoming plant material	100 Shipments
Target Pests	via UPS, Air, Truck or Mail	Inspected
<u>Pest Detection</u>		
Gypsy Moth	110 Traps in Lassen County	None Detected
Japanese Beetle	2 Traps in Lassen County	None Detected
Brown Marmorated Stink Bug	2 Traps in Lassen County	None Detected



The brown marmorated stink bug (*Halyomorpha halys*) was first found in Lassen County in 2012 at Sierra Army Depot. It was brought in on military vehicles shipped from the east coast. It is native to Asia and first arrived in Pennsylvania in 1996. It is a significant agricultural pest with no apparent natural predators.

Photo courtesy of Wikipedia



THE END
THE END



2014

**Lassen County Crop &
Livestock Report**



OUR MISSION

The Agriculture Commissioner promotes Lassen County agriculture production by protecting it from injurious pests & diseases, to ensure the safety and wholesomeness of food and other products for the consumer, and to build consumer and business confidence in the market place through the maintenance of equity.

PERSONNEL

Joe Moreo, Agriculture Commissioner

Craig A. Hemphill, Deputy Sealer

Tina Hilburn, Biologist II

Cheryl Lauritsen, Biologist

Mike Stewart, Seasonal

Robin Skelton-Snipes, Seasonal

Al Howe, Seasonal

Melinda Parks, Seasonal

Special thanks to all of the farmers and ranchers who provided the valuable information and photos used to compile this report.

COUNTY OF LASSEN



AGRICULTURAL COMMISSIONER/SEALER

CRAIG A. HEMPHILL

175 Russell Avenue

Susanville, CA 96130-4215

☎ Telephone (530) 251-8110 Fax (530) 251-2726

email: agcommissioner@co.lassen.ca.us

Karen Ross, Secretary

California Department of Food & Agriculture and
The Honorable Board of Supervisors of Lassen County

Bob Pyle, *District 1*

Jim Chapman, *District 2*

Larry Wosick, Chairman, *District 3*

Aaron Albaugh, *District 4*

Tom Hammond, *District 5*

Pursuant to Section 2272 & Section 2279 of the California Food and Agriculture Code, I am pleased to submit the 2014 Annual Crop and Livestock Report for Lassen County.

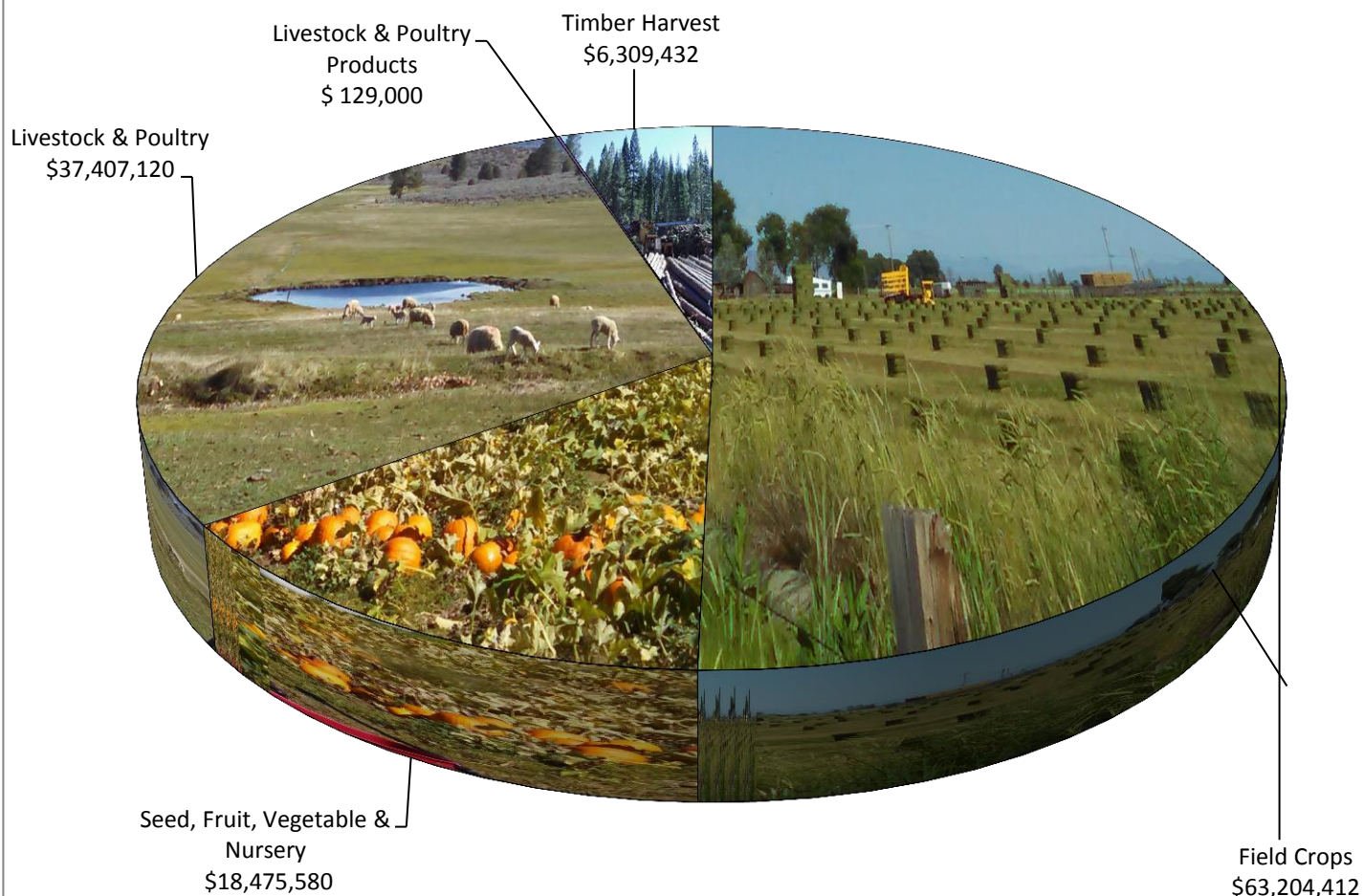
This report lists gross production and value of products and does not reflect net income to the producer. The value of agricultural products produced in Lassen County for 2014 was \$125,525,544. This 1% increase in overall value was affected positively by higher cattle prices and negatively by lower hay prices.

I wish to express my sincere appreciation to the members of my staff for their efforts in collecting and compiling this report and to the many farmers, ranchers and governmental agencies who provided the information which made this report possible.

Respectfully Submitted,

Craig A. Hemphill
Interim Agriculture Commissioner

Summary of Production Values



SUMMARY OF PRODUCTION VALUES

COMMODITY GROUP	2014
Field Crops	\$63,204,412
Seed, Fruit, Vegetable & Nursery	18,475,580
Livestock & Poultry	37,407,120
Livestock & Poultry Products	129,000
Timber Harvest	6,309,432
Total	\$125,525,544

FIELD CROPS

CROP	YEAR	ACRES HARVESTED	PRODUCTION PER ACRE	UNIT	PRODUCTION TOTAL	VALUE PER UNIT	TOTAL VALUE
Hay, Alfalfa	2014	28,000	4.17	Ton	116,760	\$217.13	\$25,352,098
	2013	28,000	4.40	Ton	123,200	\$240.00	\$29,568,000
Hay, Grain	2014	10,000	3.16	Ton	31,600	170.27	5,380,532
	2013	10,000	2.30	Ton	23,000	157.69	3,626,870
*Hay, Other	2014	29,000	4.01	Ton	116,290	210.78	24,511,606
	2013	29,000	4.00	Ton	116,000	228.33	26,486,280
Wheat	2014	2,600	1.45	Ton	3,770	351.02	1,323,345
	2013	2,800	2.40	Ton	6,720	220.00	1,478,400
**Pasture (irrigated)	2014	23,000	6.00	AUM	138,000	40.00	5,520,000
	2013	23,000	6.00	AUM	138,000	35.00	4,830,000
**Pasture (non-irrigated)	2014	22,000	1.00	AUM	22,000	17.00	374,000
	2013	22,000	2.00	AUM	44,000	15.00	660,000
**Pasture (range)	2014	1,291,253	0.10	AUM	129,125	1.69	218,221
	2013	1,291,253	0.10	AUM	129,125	1.35	174,319
**Aftermath (stubble-all)	2014	20,000	1.00	AUM	20,000	25.00	500,000
	2013	20,000	1.00	AUM	20,000	23.00	460,000
Straw	2014	225	1.25	Ton	281	87.50	24,609
	2013	225	1.00	Ton	225	80.00	18,000
Total	2014						\$63,204,412
	**2013						\$67,301,869

*Grass Alfalfa Mix, Grain Hay & Grass Hay

** 2013 figures corrected for accuracy



SEED, FRUIT, VEGETABLE AND NURSERY CROPS

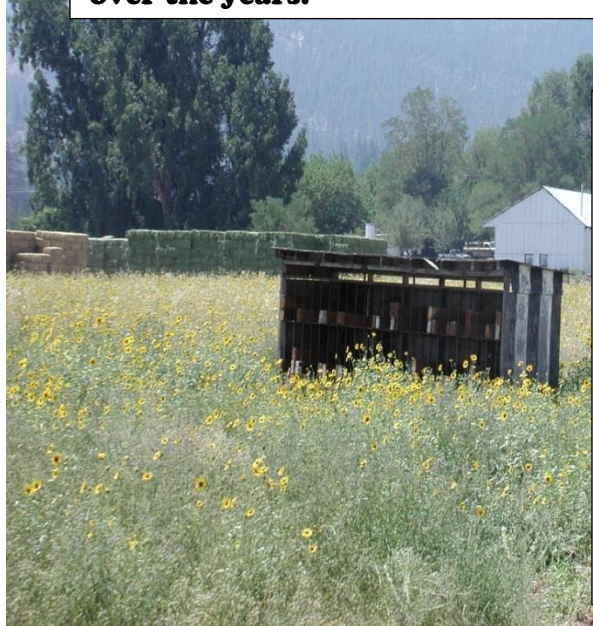
CROP	HARVESTED PRODUCTION			PRODUCTION		VALUE	
	YEAR	ACREAGE	PER ACRE	UNIT	TOTAL	PER UNIT	TOTAL VALUE
Wild Rice	2014	1,579	1,757	Lbs.	2,773,735	\$.82/green lb.	\$2,274,463
	2013	2,109	1,325	Lbs.	2,794,425	\$.71/green lb.	\$1,984,042
Misc. Crops (alfalfa seed, apples, endive, canola, garlic seed, peaches, mint, safflower, blueberries, watermelon, strawberries misc. vegetables & greenhouse flowers)	2014						16,201,118
	2013						16,437,500
Total	2014						\$18,475,580
	2013						\$18,421,542

* Strawberries & Mint moved to misc. crops due to 3 producers or less



Changes in market conditions have brought production changes to Lassen County. In 1909, 23 acres were harvested for strawberry fruit. In 1994, the 618 acres of strawberries were grown primarily for strawberry nursery stock. Wild rice and garlic seed crops have also varied in importance over the years.

Strawberries are the only fruit whose seeds grow on the outside. The average strawberry has about 200 seeds.



Bees are the only insects in the world that make food for humans. Alfalfa leaf cutting bees are used to help pollinate alfalfa. Their use in alfalfa fields has been the most successful use of a cavity nesting solitary bee for managed pollination. Research is on-going to study their usefulness in orchard and berry crops.



LIVESTOCK & POULTRY

COMMODITY	YEAR	# OF HEAD	LIVEWEIGHT	*UNIT	PER UNIT	TOTAL
Cows	2014	5,780	57,800	Cwt.	\$120.00	\$6,936,000
	2013	6,000	60,000	Cwt.	\$90.00	\$5,400,000
Calves	2014	5,500	30,250	Cwt.	200.00	6,050,000
	2013	5,200	27,300	Cwt.	168.56	4,601,688
Heifers	2014	6,254	49,605	Cwt.	180.00	8,937,000
	2013	6,254	46,905	Cwt.	128.06	6,006,654
Steers	2014	8,500	63,750	Cwt.	180.00	11,475,000
	2013	8,500	63,750	Cwt.	132.00	8,415,000
Bulls	2014	1,000	17,500	Cwt.	120.00	2,100,000
	2013	1,100	19,250	Cwt.	90.00	1,732,500
Sheep/Lambs	2014	10,000	12,000	Cwt.	153.76	1,845,120
	2013	10,000	12,000	Cwt.	94.00	1,128,000
Misc. Livestock	2014					64,000
(bison, pheasant, goats, chickens, alpaca, hogs)	2013					64,000
97% of the cattle ranches in the U.S are family owned. Cattle, calves and milk are among the top 5 commodities raised in California.						
Total	2014					\$37,407,120
	2013					\$27,347,842

*Unit is per 100 lbs. (Cwt)

President Woodrow Wilson grazed sheep on the White House South Lawn. The wool obtained from the sheep was sold to raise money for the Red Cross during World War I. The flock included "old Ike," a tobacco-chewing ram.

Texas, Wyoming and California are the U.S. states with the highest number of sheep. More than two thirds of the U.S. sheep are in the Southern Plains, Mountain and Pacific regions.

LIVESTOCK PRODUCTS

COMMODITY	YEAR	TOTAL
Includes: wool, eggs	2014	\$129,000
apiary & rabbits	2013	\$129,000
Total	2014	\$129,000
	2013	\$129,000

TIMBER HARVEST

COMMODITY	YEAR	PRODUCTION	UNIT	VALUE	TOTAL
*Saw Timber	2014	29,306	NET MBF	\$215.29	\$6,309,432
	2013	59,995	NET MBF	\$189.18	\$11,349,943
Total	2014	29,306	NET MBF	\$215.29	\$6,309,432
	2013	59,995	NET MBF	\$189.18	\$11,349,943

*Figures provided by the Timber Tax Division, California State Board of Equalization



Timber photos courtesy of W. M. Beaty & Associates, Inc. and Sierra Pacific Industries

ORGANIC FARMING STATISTICS

Alfalfa Hay	1,242.00	Acres Certified
Hay, other	20.00	Acres Certified
Asparagus	24.50	Acres Certified
Endive	38.40	Acres Certified
Quinoa	300.00	Acres Certified
Peas, dried	80.70	Acres Certified
Wheat	119.00	Acres Certified
Pasture & Rangeland	77,317.91	Acres Certified
Fallow Ground	68.50	Acres Certified
Cattle	1,142.00	Certified Organic (# of head)

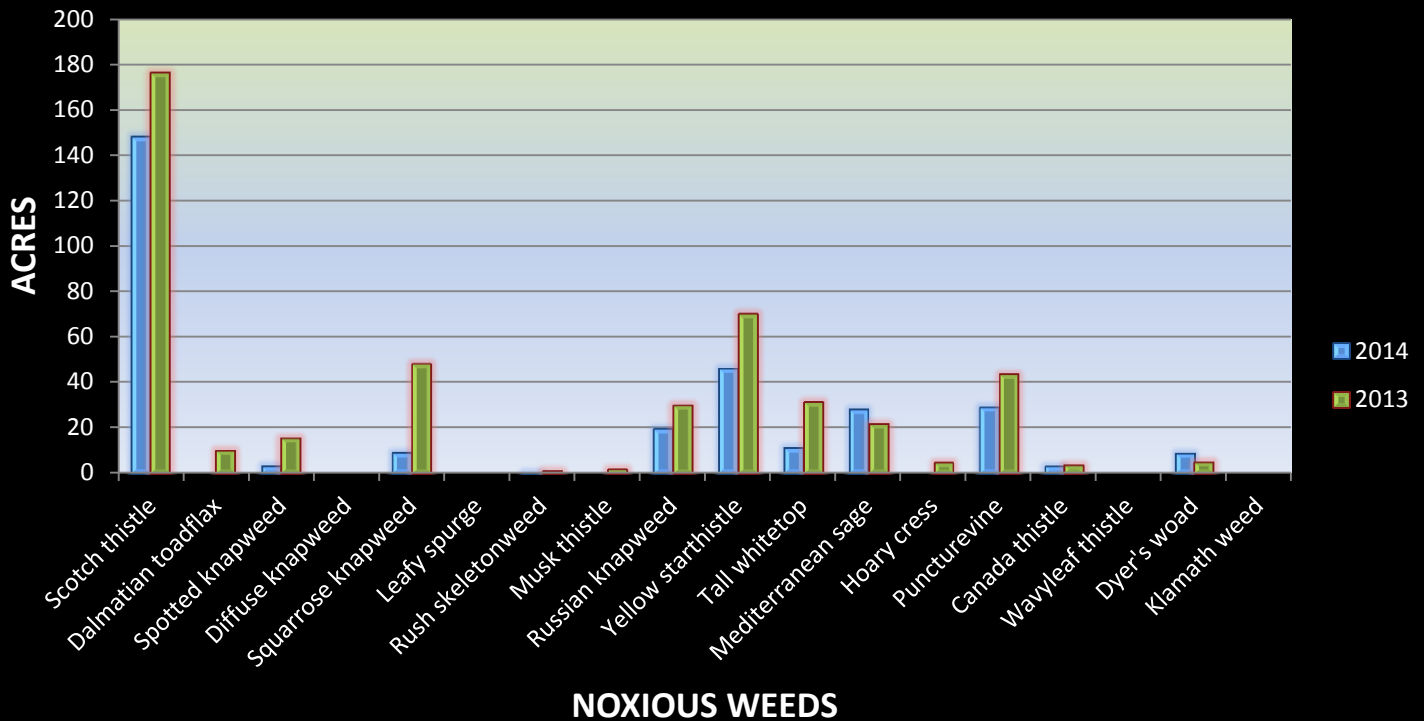
Total Organic Acres: 79,211.1 Total # of Cattle: 1,142

Total Value: \$1,746,443

With the increased focus on who, where and how food is produced, Lassen County continues to see an increase in organic producers. From the northern most corners of the county to the Honey Lake Valley, cattle and a wide variety of certified organic crops can be found. These crops and cattle contribute \$1,746,443 to the economy of Lassen County.

PEST MANAGEMENT

2 YEAR WEED WORK COMPARISON



<i>Pest Eradicated</i>	<i>Control Method</i>	<i>2014 Net Acres</i>	<i>2013 Net Acres</i>
Scotch thistle	Chemical/Mechanical	147.91	176.46
Dalmatian toadflax	Chemical/Mechanical/Biological	0.07	10.14
Spotted knapweed	Chemical/Mechanical	3.125	15.66
Diffuse knapweed	Chemical	0.15	0.15
Squarrose knapweed	Chemical	9.09	48.25
Leafy spurge	Chemical	0.2	0.07
Rush skeletonweed	Chemical	0.43	1.08
Musk thistle	Chemical	0	1.78
Russian knapweed	Chemical/Biological	19.56	30.02
Yellow starthistle	Chemical/Mechanical	46.14	70.26
Tall whitetop	Chemical	11.24	31.49
Mediterranean sage	Chemical	28.23	21.84
Hoary cress	Chemical	0.24	4.71
Puncturevine	Chemical	29.17	43.78
Canada thistle	Chemical	3.09	3.77
Wavyleaf thistle	Chemical	0	0.13
Dyer's woad	Chemical	8.79	5.04
Klamath weed	Chemical	0.12	0

Pest Detection and Exclusion

The Lassen County Agriculture Commissioner's Office, in cooperation with the California Department of Food and Agriculture's Plant Health and Pest Prevention Services Division works to protect our food supply, environment, natural resources, community and agriculture from the devastating impact of exotic pests. Our staff spends numerous hours and travels hundreds of miles monitoring insect detection traps and inspecting incoming nursery stock and plant material shipments to safeguard against the possibility of a pest becoming widely established in our area. Over the year, our efforts have met with success as no pests have been encountered.

Pest Detection

Gypsy Moth	110 Traps in Lassen County	None Detected
Japanese Beetle	2 Traps in Lassen County	None Detected
Brown Marmorated Stink Bug	4 Traps in Lassen County	None Detected

Exotic pests, otherwise known as an alien or non-native, are organisms that are brought into an area outside of their natural habitat. Most of the time, these "aliens" arrive in their new home accidentally. They have few natural enemies in their new environment hence their ability to over-run the native species.

Pest Exclusion

Exotic Pests and/or Target Pests	Incoming plant material via UPS, Air, Truck or Mail	100 Shipments Inspected
-------------------------------------	--	----------------------------

10 YEAR COMPARATIVE PRODUCTION VALUES

2014	\$125,525,544
**2013	\$124,550,196
2012	\$101,653,576
2011	\$101,712,856
2010	\$74,500,023
2009	\$69,091,500
2008	\$91,424,832
2007	\$65,633,696
2006	\$73,084,152
2005	\$67,549,795

**2013 figures corrected for accuracy

TOP LASSEN COUNTY CROPS

2014 RANK	COMMODITY	VALUE	2013 RANK
1	All Hay	\$55,244,236	1
2	Livestock	\$37,407,120	2
3	Misc. Nursery Crops	\$16,201,118	4
4	Timber	\$6,309,432	3
5	Pastureland	\$6,162,221	5
6	Wild Rice	\$2,274,463	6
7	Livestock Products	\$129,000	7

FIVE YEAR SUMMARY OF PRODUCTION VALUES

YEAR	FIELD CROPS	SEED, FRUIT, VEGETABLE & NURSERY	LIVESTOCK & POULTRY	LIVESTOCK PRODUCTS	TIMBER HARVEST	TOTAL
2014	62,754,412	18,475,580	44,343,120	129,000	6,309,432	\$125,525,544
2013**	66,773,524	18,421,542	27,347,842	129,000	11,349,943	\$124,550,196
2012	52,082,620	11,378,673	25,024,594	129,000	12,997,465	\$101,612,352
2011	55,465,769	10,000,000	23,943,336	129,000	9,593,180	\$101,710,856
2010	35,160,330	14,800,129	19,596,775	129,000	4,686,859	\$74,500,023

**2013 figures corrected for accuracy

*THANK YOU FOR
VISITING LASSEN
COUNTY
PLEASE COME AGAIN*

