



AgEcon SEARCH
RESEARCH IN AGRICULTURAL & APPLIED ECONOMICS

The World's Largest Open Access Agricultural & Applied Economics Digital Library

This document is discoverable and free to researchers across the globe due to the work of AgEcon Search.

Help ensure our sustainability.

Give to AgEcon Search

AgEcon Search

<http://ageconsearch.umn.edu>

aesearch@umn.edu

*Papers downloaded from **AgEcon Search** may be used for non-commercial purposes and personal study only. No other use, including posting to another Internet site, is permitted without permission from the copyright owner (not AgEcon Search), or as allowed under the provisions of Fair Use, U.S. Copyright Act, Title 17 U.S.C.*

California Department of Food and Agriculture

Agricultural Commissioners' Crop Reports

Ventura County

1962-1965

California County Agricultural Commissioners' Reports from the California Department of Food and Agriculture. This collection consists of annual crop and livestock data from each of the 58 California Counties. The collection covers 1915-1981; digitization of the rest of the collection is forthcoming.

This digitization project was funded by the Giannini Foundation of Agricultural Economics, <http://giannini.ucop.edu/>.

The work was completed by the staff of the Giannini Foundation Library, University of California, Berkeley, <http://are.berkeley.edu/library/>. **Please contact the Library to consult the originals.**



1962

7. 11. 62

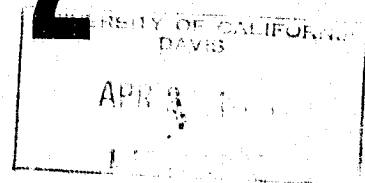
Local Copy

VENTURA COUNTY

ANNUAL REPORT

AND
CROP STATISTICS

1962



AGRICULTURAL
COMMISSIONER

A N N U A L R E P O R T
OF
C. J. B A R R E T T
A G R I C U L T U R A L C O M M I S S I O N E R
C O U N T Y O F V E N T U R A
C A L I F O R N I A
FOR
YEAR ENDING DECEMBER 31, 1962

TO

VENTURA COUNTY BOARD OF SUPERVISORS

J.K. MACDONALD, District 3, Chairman
(Ojai, Meiners Oaks, Oak View, Casitas Springs, Foster Park
& Ventura Avenue)

H.F. ROBINSON, District 1
(Ventura, Montalvo & Saticoy)

FRED E. IRELAND, District 4
(Santa Paula, Fillmore & Piru)

ROBERT W. LEFEVER, District 2
(Camarillo, Conejo Valley,
Moorpark & Simi Valley)

EDWIN L. CARTY, District 5
(Oxnard, Port Hueneme, El Rio
& Nyeland Acres)

AND

CHARLES PAUL, DIRECTOR OF AGRICULTURE
STATE OF CALIFORNIA

C O N T E N T S

	<u>Page</u>
Department Personnel.	1
Plant Quarantine.	3
Standardization	4
Nursery Inspection	5
Plant Disease Inspection.	8
Seed Inspection	10
Surveys	12
Field and Orchard Inspection.	16
Pest Control Supervision.	17
Weed Control.	19
Rodent Control	20
Treatments	22
Ship Inspections.	22
Apiary Inspection	23
Biological Control of Insects	23
Predatory Animal Control.	24
Financial Statement	25

Ventura County Crop Report

DEPARTMENT PERSONNEL

COMMISSIONER

G. J. BARRETT

Deputy Commissioner
Deputy Commissioner
Deputy Commissioner

John L. Schall
John C. Allee
Harry E. Bronson

Supervising Inspector - Standardization
Supervising Inspector - Nursery, Seed & Plant Disease

Paul B. Travis
Verner E. Holmer

Vacuum Fumigation

Murl Boren

Sr. Inspector, Ventura

Donald Anderson

Sr. Inspector, Oxnard - Quarantine
Sr. Inspector, Oxnard - Standardization & Pest Control
Sr. Inspector, Oxnard - Egg & Poultry Standardization
Inspector, Oxnard - Standardization
Inspector, Oxnard - Standardization

W. M. Dunning
Clyde May
Kenneth Weiss
Gene Fidel
Donald Hare

Sr. Inspector, Moorpark-Simi
Inspector, Moorpark-Simi - Weed & Rodent

I.L. Clements
Bruce Burns

Sr. Inspector, Ojai

Marvin Paregien

Sr. Inspector, Fillmore-Bardsdale

Harold Hawkins

Sr. Inspector, Camarillo-Somis-Thousand Oaks
Sr. Inspector, Camarillo-Somis-Thousand Oaks

Richard Chase
W. Mark Jones

Sr. Inspector, Santa Paula
Inspector, Santa Paula - Weed & Rodent & Plague Control

Ed R. Urban
Floyd Ward

Sr. Inspector - Apiary

Glenn M. Smith

Agricultural Field Assistant
Agricultural Field Assistant
Agricultural Field Assistant
Agricultural Field Assistant
Agricultural Field Assistant

Floyd Atmore
Robert Evans
Glenn Hackworth
Carroll Hannah
Carl Whittaker, Jr.

Account Clerk

Shirley Carter

Record Clerk II
Part-time Record Clerk II

Margaret Wallace
Jo Sanborn

ANNUAL REPORT TO THE BOARD OF SUPERVISORS
COUNTY OF VENTURA
AND
THE DIRECTOR
STATE DEPARTMENT OF AGRICULTURE

1962

We submit to you a short resume of the activities of the Agricultural Commissioner's office for the calendar year 1962.

The office of the Commissioner is charged with the enforcement of state and county regulations for the promotion and protection of the agricultural industry. While enforcement is our main purpose, we must always recognize the need for good public relations, and the cooperation of those with whom we work. Because of this, we frequently meet with interested groups or organizations to spread the gospel. We try to be of service to every taxpayer, commercial grower or city resident. The cooperation received from all concerned is most gratifying.

The expanding population of the county affects our office as it does other departments of the county government. Increased planting of ornamentals in yards, the movement of plant material and the changes in acreage from tree crops to vegetables adds tremendously to the work of our force. In spite of the increased load necessary to carry out the functions of our office, we have not added to our personnel. We have initiated in-service training to make the work more interesting to our staff members as well as make them better qualified to handle the necessary tasks.

We work in cooperation with the State Department of Agriculture, the United States Department of Agriculture and with other related agencies in carrying out our duties.

PLANT QUARANTINE

One of the major functions of the Commissioner is to enforce quarantine regulations on plant material, either entering from other states or from other counties within the state. State law requires that all incoming plant material be held for immediate inspection.

We find that during recent years the nursery stock grown in California is far more free of pests than formerly, but there are still certain pests from other locations not present in Ventura County. Plants are imported from many other states where insect and disease pests, not known to occur in California, are present. With this known factor, we must be ever alert if we are to prevent the introduction of new and serious pests into our area.

Following is a summary of plant quarantine work performed throughout the past year:

Interstate Plant Quarantine

	Shipments Inspected	No. Tons, Plants Or Packages Inspected	Shipments Rejected	No. Tons Or Plants Rejected	Shipments Released	No. Tons Or Plants Released
Grain	702	39,787	1	60	1	60
Plants	2,579	1,191,328	26	60		
Seed	170	946,292				

Intrastate Plant Quarantine

	Shipments Inspected	No. Tons, Plants Or Packages Inspected	Shipments Rejected	No. Tons Or Plants Rejected	Shipments Released	No. Tons Or Plants Released
Grain	60	1,379				
Plants	8,778	17,906,492	127	5,727	105	5,400
Seed	963	223,586				

Export Certification (European & Asian, by ship):

No. of shipments passed 2,122
 No. of packages passed 1,629,856

Number of hours spent on Interstate & Intrastate Plant Quarantine. . . 10,578

STANDARDIZATION

The passing of the general store and the village smithy has had an atmospheric change in the rural landscape, but has not changed the farmers concept of his particular soil, only his criteria. Economics stemming from urban encroachment has caused a revolution in method and effect. This county's rural area, naturally bountiful, has responded to man's demand for more production per acre.

The County Agricultural Commissioner and his inspectors, with the State Law as a guide, are watching this production explosion with care. They must assist the farmer and shipper get the product to market. At the same time, they must protect the consumer from fraud and deception by exacting inspections to see that the product meets the minimum requirements of the law regarding maturity, quality, labeling and deception, and that the article will be in compliance within an arm's length of the consumer.

In the field, in the packing houses and at retail level, this surveillance of fruits, nuts, vegetables, eggs, honey and poultry and rabbit meat serves as a guard for the public's health and safety.

Following is a summary of the standardization work done during 1962:

Fruits, Nuts and Vegetables

Containers inspected.	6,096,896
Containers certified.	3,263,344
Number of lots certified.	7,331
Number of containers rejected	26,070
Number of violation notices issued.	248

Eggs

Lots inspected.	1,926
Number of dozens inspected.	313,061
Number of dozens rejected	22,219
Number of violation notices issued.	106

Poultry and Rabbit Meat

Number of inspections	726
Number of carcasses inspected	65,150
Number of carcasses rejected.	396
Number of violation notices issued.	21

Total man hours spent on standardization in 1962 9,444

NURSERY INSPECTION

The nursery inspection program in Ventura County includes semi-annual inspection of all fruit tree nurseries (licensed and "own-use") and quarterly inspection of all other nurseries. At least one inspection during the year is made of properties adjoining retail nurseries. Supervision of pest treatments, at time of digging, in all citrus nurseries, is required.

If serious pests are found in a nursery, immediate eradictive measures are required and are applied under supervision of this office.

Since September 1, 1962, this county has been a member of the so-called "Pinto Tag Agreement" on a shipping basis only. This means nursery stock, other than citrus, moving from this county to any other member-county will be accepted without further inspection. We will continue to require destination inspection, as a condition of release for planting, of all nursery stock entering Ventura County.

Eighteen insect specimens were submitted to the Bureau of Entomology. Six specimens of diseased nursery stock and twenty soil and root samples for nematode determination were submitted to the Bureau of Plant Pathology. Many plant specimens were identified for us by Dr. T.C. Fuller, state department botanist.

Surveys for two pests new to California were made at the request of the State Nursery Service. Twenty seven nurseries were inspected for the presence of Holly Leaf Miner (Phytomyza illicis), a pest of Ilex species of ornamentals. Ten nurseries were inspected for an, as yet, unnamed Eriophyid mite attacking Sasa pygmaea, a dwarf species of bamboo much used in contemporary garden designs. Approximately five days were spent on these surveys. In the case of Holly Leaf Miner, findings were negative. One nursery, out of the ten inspected for Dwarf Bamboo Mite, was found infested. All hosts were treated to eradicate the pest.

A ninety-day follow-up survey for Veronica Leaf Miner (Phytomyza crassiseti) in six nurseries, involving 712 hosts, was made in the spring. Negative findings, in all cases, indicate that eradication was accomplished.

Aonidiella aurantii, California Red Scale, a serious pest of citrus was found in three nurseries during 1962. Eradictive treatment was required. Reinspections were made. Findings were negative.

Solanum elaeagnifolium, White Horsenettle, was found in one citrus nursery. All nursery stock in the area of infestation was destroyed. Solanum carolinense, Carolina Horsenettle, is present in one ornamental nursery. Cuttings only are allowed to move from the area of infestation. Eradication is mandatory in the case of these and all other "primary" noxious weeds. Until eradication is accomplished, no nursery stock with soil may move from the infested areas.

"Secondary" noxious weeds (Nutmgrass, Morning-glory) were found in ten nurseries. Eradication is required where feasible. Control of movement of

infested nursery stock is maintained through denial of shipping permits for stock growing in the infested areas in these nurseries.

The department sponsored program of soil fumigation for the control of soil-borne plant pathogens and of weeds has become an accepted nursery practice in Ventura County. Particular emphasis is placed on the elimination of nematodes from nursery growing grounds. The program is based on research that has been carried on in this county and on the recommendations of the University of California. Choice of materials, dosages and application techniques depend on the particular crop to be grown and on soil type. Five materials are approved for use in this program. Following are examples of dosages required per acre.

<u>Material</u>	<u>Sandy</u>	<u>Clay Loam</u>
DD	100 gal.	200 gal.
Telone	80 gal.	160 gal.
Methyl Bromide	300 lb.	600 lb.
Chloropicrin	300 lb.	600 lb.
Carbon Bisulfide	330 gallons in good balling soil.	

In treating fruit tree nursery soil, the dosage for any of these materials lies somewhere between the two extremes shown above, since a good balling consistency is neither sand nor clay.

All of these materials are effective nematocides. Two of them have the added ability to eliminate weeds and many soil-borne diseases. These two are finding particular favor with ornamental nurserymen. Soil fumigation demonstrations by office personnel were continued this year as a means of furthering the program. Regular sampling of soil and roots is carried on in fumigated nurseries to determine the nematode population. Visual inspections are made for weeds and other pests.

Origin certification of tomato plants free from nematode required 298 hours of field inspection in eleven nurseries, totalling 235 acres of seed bed. Intensive visual inspections were made throughout the shipping period. Laboratory sampling of all varieties moving intercounty is required. One three acre block involving two varieties was found infected and was destroyed. The balance, 232 acres, showed no evidence of the presence of nematode.

The following is a summary of nursery inspection for the year 1962:

Number of nursery inspections.	676
Number of reinspections to determine results of specific pest treatments.	58
Number of nurseries with "A" pests (eradication mandatory throughout the state).	2
Number of "B" pest infestations (serious pests of limited distribution; eradication mandatory in Ventura County)	10

Number of nurseries with "C" pests in excess of tolerance allowed. ("C" pests are pests of common occurrence. The tolerance allowed is defined in the rules and regulations of the Bureau of Nursery Service.)	72
Number of nurseries required to clean-up.	84
Number of notices of non-compliance issued (Includes those for Grades and Standards violations)	98
Hours spent on nursery inspection	2,145

PLANT DISEASE INSPECTION

Twelve hundred ten inspections relating to plant disease, other than those discussed under "Surveys", were made by this office during the year 1962. This represents an increase of thirty three per cent over the year 1961. Inspections were made in fields, orchards, nurseries and residential properties, covering a wide variety of problems including fungus, bacterial, virus and nematode infections; disorders resulting from minor element deficiencies and excesses; salt and alkali injury; fertilizer burn; chemical injury due to pest control materials; and physiological disorders resulting from cultural or environmental conditions or other causes.

Phytophthora cinnamomi, cinnamon fungus: Four new infections were found in 1962. This brings the total known infections in Ventura County to eighteen, and raises the infected acreage total from sixteen to nineteen and three quarters. No eradicated field treatment has been developed to date. Removal of infected hosts and replanting to immune crops is the control measure recommended. While there are many hosts of this disease, avocados are the principal agricultural crop affected. Most of our infected acreages have been replanted to citrus, an immune crop, thereby virtually eliminating the risk of spread to other properties. The disease was first reported in Ventura County in 1950. Since that time it has been found in all districts of the county except "Fillmore-Bardsdale-Piru". Avocado nurserymen continue to avail themselves of a service, offered by this office, which is designed to aid in combatting the disease. We are equipped to heat-treat avocado seed in the manner prescribed by Nursery Service in their "Avocado Nursery Stock Certification Program". Twenty two lots comprising 25,200 seeds were treated for nurserymen during 1962. The service is offered at cost to those interested.

The same equipment, used to heat-treat avocado seed, is used in the hot water treatment of citrus seed. Phytophthora parasitica and Phytophthora citrophthora, two serious soil-borne fungi attacking citrus, occur as contaminants on the seed coat. Their introduction into the seed bed can cause serious loss to the nurseryman. The hot water treatment is eradicated. Eight lots, comprising one hundred fourteen quarts of seed, were treated for nurserymen during 1962. With the seed count per quart ranging from 2,500 to 6,000 this represents a potential nursery tree count of more than 400,000.

Additional use has been made of this same equipment in treating, experimentally, selected lots of flower seed, for the control of seed-borne fungi. Little loss in germination has been experienced and much benefit is expected to result, according to the interested seed company.

Sclerotium rolfsii, a soil-borne fungus disease, unknown in Ventura County prior to 1958, continues to be confined to 10 properties, no new infections being found during 1962. Because of the wide range of crop hosts, regular surveys for this serious disease will continue.

We acknowledge again the cooperation of the Bureau of Plant Pathology, State Department of Agriculture, and the office of the Farm Advisor of this county. Their aid to department personnel in disease determination is appreciated.

Following is a summary of plant disease inspection for 1962:

<u>Host</u>	<u>No. of Inspections</u>
Avocados	31
Citrus	182
Deciduous Fruits & Nuts	134
Grapes, Caneberries	9
Vegetables	40
Field Crops	20
Melons, Cucumbers, Squash	9
Flowers	20
Ornamental Shrubs & Trees	624
Lawns	97
Miscellaneous	44
Total number of inspections	<u>1,210</u>

Number of hours spent on plant disease inspection. . . . 1,030

SEED INSPECTION

Seed inspection includes both regulatory and service duties.

The Commissioner enforces the "California Seed Law" (Sec. 910-20 Agri. Code; Sec. 3850-3894 Calif. Administrative Code); regulates movement and disposal of seed screenings (Sec. 154.3 Agric. Code); and under the rules of the California Crop Improvement Association, supervises the cleaning of all seed production facilities including threshers, seed cleaning machinery and storage bins; samples eligible lots (purity and germination), controls sealing and labeling and movement of those lots which meet the standards of the organization, and requires and enforces maintenance of identity of certified lots. Commercial grade sampling is done for the State Department of Agriculture.

Enforcement of the "Seed Law" and regulations affords protection to the buyer of seed by insuring proper labeling to show germination, purity, kind and variety, and weed seed content. This is accomplished through inspection, sampling and the occasional use of "Stop-Sales".

Legal disposal of lots in violation of seed law or quarantine is provided through maintenance of a list of approved mills. These mills are periodically inspected. They are required to maintain certain standards which guarantee that the viability of weed seed will be destroyed. Grinding for feed is permitted for most lots in violation. There are five approved mills in the county.

Following is a summary of this work performed during 1962:

Number of dealers' lots inspected	1,211
Lots in violation	55
Lots seized or destroyed	17
Stop-sale orders issued	35
Official samples drawn	21
California Crop Improvement Ass'n Certification Samples drawn	1
Quarantine samples drawn	18
Grade samples drawn	88
Number of seed houses inspected	141

Regular plant quarantine inspections (Interstate and Intrastate) made during the year 1962 afforded us a chance to inspect an additional 1,246 lots of seed destined for planting in Ventura County.

In addition to the regulatory work outlined above, the following seed certification services were performed by this department under Section 9113.31-9113.2 of the Ventura County Ordinance Code. This ordinance established a schedule of fees to be charged for services of this kind. This function of the Agricultural Commissioner's office is self supporting.

Tomato Seed Certification Program:

The tomato seed certification program in Ventura County operates under authority of the Director of Agriculture in collaboration with the Bureau of Plant Pathology, State Department of Agriculture. The rules and regulations of the program cover all phases of tomato seed production. Three field inspections during the growing season are required for the purpose of determining the presence or absence of Bacterial Canker (Corynebacterium michiganense), a seed-borne disease.

Nine hundred ninety (990) acres, representing the tomato seed production plantings of three major seed companies, were offered for inspection and certification in 1962. Inspection was refused on 89 acres (3 varieties) planted on land known to be infected with Bacterial Canker. Twenty four varieties (365 acres) were declared ineligible for certification for violation of the rules governing "extraction and processing". 535 acres, (67 varieties) were approved for certification. No Bacterial Canker (Corynebacterium michiganense), was found in any of the inspected acreages in Ventura County in 1962.

Pepper Seed Certification Program:

Pepper acreage is also accepted for inspection. A single inspection is required after fruit has reached maturity. Five hundred eighty seven (587) acres (28 varieties) were inspected during 1962 and found free from seed-borne disease.

Eggplant and Broccoli Seed Certification Programs:

One thirteen acre block (3 varieties) of eggplant was inspected and found free from seed-borne disease.

A one acre block of broccoli (one variety) was inspected and found free from seed-borne disease.

Supervision of all seed certification work is assigned to one member of the staff. Ten district men assisted in the field inspection.

Total number of hours spent on seed inspection in 1962. 1,270

SURVEYS

The 1962 survey season was an active one for the county. A total of twenty programs were completed during the year, resulting in the discovery of two new minor insect pests and one possible disease. The important result of the work, however, was the fact that complete and intensive inspections revealed that no new important pests have become established within the county.

The two new insects found this year are neither of great importance in Ventura County, although one of them, the Pear Psylla, is unimportant only because few commercial pears are grown here. This pest is the suspected vector of pear decline, the disease which has threatened the pear industry of California and the northwest. The insect was discovered in Ventura County in the Upper Cuyama Valley in a family orchard which is isolated from any pear plantings by several miles.

The other new pest found was a mite attacking dwarf bamboo. This Eriophyid mite is apparently a new species which has recently been reported in a few nurseries within California. A check of local nurseries revealed one infested property.

The suspected disease could be of some local significance. During the fall of 1962, a plant disorder among poinsettias was found by one of the county inspectors. Investigation by state plant pathologists indicated this to be a possible virus condition causing leaf crinkle and dwarfing of the flowers. A survey made of yard plantings throughout the county showed the condition to be widespread in Ventura, Oxnard and Camarillo; in Santa Paula, Moorpark and Ojai, it was found occasionally. Should this disorder actually be a virus, it could possibly be important in the Ventura area where the poinsettia is an important ornamental plant.

With eradication of the Japanese Beetle still under way in Sacramento, the trapping program for this insect throughout the state has continued to be stepped-up. Traps in the county were placed around airports and in areas favorable to the development of the beetle.

Citrus White Fly was again found in Sacramento. This resulted in increased inspection for that important citrus pest. Yards in all major towns in the county were surveyed.

Other major surveys made during the year included the Multiple Fruit Fly trapping program, Khapra Beetle, Quick Decline of Orange, and tomato seedling inspection for nematodes. Also, several minor surveys were conducted.

Following is a summary of detection and survey work done in Ventura County during 1962:

ENTOMOLOGY

=====

Citrus White Fly

<u>County Man Hours</u>	<u>Cooperating Agency</u>	<u>Properties Inspected</u>	<u>Hosts Inspected</u>
60	State	46	1,120

=====

Cucurbit Insects

<u>County Man Hours</u>	<u>Cooperating Agency</u>	<u>Properties Inspected</u>	<u>Acres Inspected</u>
8	State	13	424

=====

Eriophyid Bamboo Mite
(New Pest)

<u>County Man Hours</u>	<u>Cooperating Agency</u>	<u>Properties Inspected</u>	<u>Hosts Inspected</u>	<u>Properties Infested</u>	<u>Hosts Infested</u>
14	State	16	64	1	2

=====

European Corn Borer

<u>County Man Hours</u>	<u>Cooperating Agency</u>	<u>Properties Inspected</u>	<u>Acres Inspected</u>
16	State	18	468

=====

Holly Leaf Miner

<u>County Man Hours</u>	<u>Properties Inspected</u>	<u>Hosts Inspected</u>
19	27	2,006

=====

Japanese Beetle

<u>County Man Hours</u>	<u>Cooperating Agencies</u>	<u>Traps Operated</u>	<u>Properties Trapped</u>
60	State and Federal	27	7

=====

Khapra Beetle

<u>County Man Hours</u>	<u>Cooperating Agency</u>	<u>Properties Inspected</u>				<u>Specimens Collected</u>	
		<u>Type 2</u>	<u>Type 3</u>	<u>Initial</u>	<u>Repeat</u>		
290	Federal	43	157	179	21	200	135

=====

=====

Mexican Bean Beetle

<u>County Man Hours</u>	<u>Cooperating Agency</u>	<u>Properties Inspected</u>	<u>Acres Inspected</u>
8	State	30	2,295

=====

Multiple Fruit Fly

<u>County Man Hours</u>	<u>Cooperating Agency</u>	<u>Traps Operated</u> <u>Steiners McPhails</u>	<u>Properties Inspected</u>	<u>Specimens For Determination</u>
374	State	103 100	103	135

=====

Pear Psylla
(New Insect)

<u>County Man Hours</u>	<u>Cooperating Agency</u>	<u>Properties Inspected</u>	<u>Hosts Inspected</u>	<u>Properties Infested</u>	<u>Hosts Infested</u>
32	State	27	223	1	1

=====

Veronica Leaf Miner

<u>County Man Hours</u>	<u>Properties Inspected</u>	<u>Hosts Inspected</u>
5	6	712

=====

Wheat Sawfly

<u>County Man Hours</u>	<u>Cooperating Agency</u>	<u>Properties Inspected</u>	<u>Acres Inspected</u>
24	State	11	1,210

=====

PLANT PATHOLOGY

=====

General Pest Survey of Beans

<u>County Man Hours</u>	<u>Cooperating Agency</u>	<u>Properties Inspected</u>	<u>Acres Inspected</u>
32	State	30	1,230

=====

Broom Rape of Tomato

<u>County Man Hours</u>	<u>Cooperating Agency</u>	<u>Properties Inspected</u>	<u>Acres Inspected</u>
40	State	23	774

=====

=====

Club-Root of Crucifers

<u>County Man Hours</u>	<u>Cooperating Agency</u>	<u>Properties Inspected</u>	<u>Acres Inspected</u>
12	State	6	150

=====

Crinkle-Leaf of Poinsettias
(New)

<u>County Man Hours</u>	<u>Cooperating Agency</u>	<u>Properties Inspected</u>	<u>Hosts Inspected</u>	<u>Hosts Infected</u>
64	State	1,185	6,173	1,335

=====

Parasitic Nematode of Tomato Seedlings

<u>County Man Hours</u>	<u>Cooperating Agency</u>	<u>Properties Inspected</u>	<u>Acres Inspected</u>
72	State	2	215

=====

Peach Mosaic

<u>County Man Hours</u>	<u>Cooperating Agency</u>	<u>Properties Inspected</u>	<u>Plants Inspected</u>
16	State	203	625

=====

General Pest Survey of Peppers

<u>County Man Hours</u>	<u>Cooperating Agency</u>	<u>Properties Inspected</u>	<u>Acres Inspected</u>
40	State	11	214

=====

Quick Decline of Orange

<u>County Man Hours</u>	<u>Cooperating Agency</u>	<u>Properties Inspected</u>	<u>Acres Inspected</u>	<u>Samples Taken For Testing</u>
705	State	592	12,019	30

=====

FIELD AND ORCHARD INSPECTION

One of the most important duties regularly performed by personnel of this office is the inspection of fields and orchards to determine pest conditions. This is done either at the request of growers, or as a routine procedure in some cases. These inspections give us a current knowledge of common insects and plant diseases, which aids in making recommendations for control. We are always alert to the possibility of finding pests new to the locality during these inspections, which may require special control measures. Approximately 1,540 hours were spent on this activity during 1962.

There is an unusually wide variety of tree, vegetable and field crops now grown in the county. Since some crop or crops will be maturing at any time during the year, this fact complicates the necessary control program. Additional factors are increased interplanting, and double or triple cropping on some land. All of these cause complications because of the carry-over of pests from one crop to another, or from the effects of constant pest control work on natural parasites and predators.

The problem of preventing excess residues is becoming increasingly important and difficult, and is receiving the careful attention of all concerned in the production of a crop.

Following is a summary of the materials most commonly applied in treatment of the more important insect pests during the past year. It does not list every material used.

Citrus

Black Scale:	Oil, rotenone, parathion, malathion.
Citrus Aphis:	Nicotine, rotenone, oil, malathion, Systox, TEPP, parathion, Rhodrin.
Citrus Mites:	Oil, DN-111, Kelthane, Delnav, Trithion, Chlorobenzilate, Tedion.
Mealybugs:	Biological control, parathion, malathion, oil and rotenone.
Orange Tortrix:	Parathion, TDE, Sevin, cryolite.
Citrus Thrips:	Tartar emetic, sabadilla, dieldrin, parathion, Delnav.
Red Scale:	Combined spray and HCN fumigation, oil and malathion and parathion, Sevin.
Yellow Scale:	Oil, malathion, parathion
Brown Rot:	Bordeaux or other forms of copper.

Avocados

Brown Mite:	(Avoid treatment if possible), sulfur, Kelthane, Ovotran.
-------------	---

Walnuts

Husk Fly: Parathion, malathion, malathion bait spray.
Codling Moth: DDT.
Walnut Aphis: Thiodan, lindane, OMPA, Trithion, parathion, nicotine.
European Red Mite: Aramite, Kelthane, Tedion.

Field Crops and Vegetables

Spider Mites: Parathion, Kelthane, Systox, Trithion, TEPP, Phosdrin, sulfur.
Aphis: Parathion, TEPP, Phosdrin, Thiodan, malathion, Diazinon, nicotine, Systox, endrin, Dibrom.
Loopers: Malathion and Perthane, DDT, toxaphene, Phosdrin, parathion, Dibrom, Perthane, Bacillus thuringiensis.
Lygus spp. Toxaphene, DDT. Dylox (seed crops)

PEST CONTROL SUPERVISION

All persons engaged in the business of agricultural pest control are required to first qualify for and obtain an agricultural pest control operators license from the California Department of Agriculture. Those obtaining a license for the first time are examined as to their qualifications. This office assists the Department in giving these examinations. In addition, the operator is required to register with the Commissioner of any county in which he operates. The Commissioner, in turn, makes certain that the registrant has suitable equipment, legally marked, in proper condition, that it is supervised by competent men, that all state and county regulations are complied with, and that the work is properly performed. During 1962, 34 pest control operators were registered to engage in agricultural pest control work in Ventura County.

Section 1080 of the Agricultural Code requires that all persons, including pest control operators, using injurious pest control materials, first obtain from the Commissioner, a permit for such use. Injurious materials are those specified in Section 2461, California Administrative Code. This permit for use must be obtained before the materials may be purchased from a dealer. During 1962, there were 151 permits issued on an annual basis.

The use of injurious herbicides, such as 2,4-D, require a similar permit from the Commissioner, which must also be obtained before the material is purchased. Permits for small scale applications, such as weed control in

orchards, yards, etc., are issued on an annual basis. Permits for large scale operations, such as weed control in grain, other large fields, and brush control are issued on a seasonal basis from November 1st to February 15th. For the rest of the year, they are only issued for each separate job. This is done to reduce the chance of possible damage from drift. During 1962, 268 seasonal and 27 individual permits were issued.

Number of hours spent on pest control enforcement. . . . 2,671

Pest control plays an important, complex part in the production of agricultural crops in Ventura County. To give some idea of the extent of these treatments, the following figures, covering applications by commercial pest control operators in 1962, are included.

<u>Acres Treated</u>	<u>By Aircraft</u>			<u>By Ground Equipment</u>			
	<u>Sprays</u>	<u>Dusts</u>	<u>Total</u>	<u>Sprays</u>	<u>Dusts</u>	<u>Other</u>	<u>Total</u>
Field Crops							
Grains	5,734		5,734	191			191
Alfalfa, Clovers	102		102				
Beans	9,898	1,206	11,104	4,290	11,059	969	16,318
Corn		17	17		14		14
Other Field Crops	<u>41</u>	<u>20</u>	<u>61</u>	<u>122</u>	<u>68</u>	<u>222</u>	<u>412</u>
TOTAL FIELD CROPS	15,775	1,243	17,018	4,603	11,141	1,191	16,935
Vegetables							
Tomatoes	4,201	6,766	10,967	1,286	9,436	1,173	11,895
Lettuce	499	409	908	1,643	9,411	23	11,077
Other Vegetables	<u>1,530</u>	<u>3,248</u>	<u>4,778</u>	<u>7,674</u>	<u>12,658</u>	<u>70</u>	<u>20,402</u>
TOTAL VEGETABLES	6,230	10,423	16,653	10,603	31,505	1,266	43,374
Other Crops							
Deciduous Fruits					2		2
Nuts		182	182	6,847			6,847
Berries	232	245	477	720	865		1,585
Flowers, Ornamentals	106	494	600	216	1,078	17	1,311
Subtropical Fruits	4,313	185	4,498	82,400	1,036	432	83,868
Miscellaneous		<u>4</u>	<u>4</u>	<u>526</u>	<u>1</u>	<u>6,592</u>	<u>7,119</u>
TOTAL OTHER CROPS	4,651	1,110	5,761	90,711	2,990	7,041	100,732
TOTAL FIELD, VEGETABLE AND OTHER CROPS	<u>26,656</u>	<u>12,776</u>	<u>39,432</u>	<u>105,917</u>	<u>45,626</u>	<u>9,498</u>	<u>161,041</u>
TOTAL TREATED BY OPERATORS							<u>200,473</u>
ESTIMATED TOTAL ACREAGES TREATED BY OTHER THAN PEST CONTROL OPERATORS							<u>20,047</u>
Miscellaneous reported in other than acres:							<u>220,520</u>
Yards: Spray - 215; Fumigated - 9							
R.R. Right of Ways: Spray - 562 acres							

WEED CONTROL

Surveys were made by Departmental staff members to find and catalog new infestations of primary and secondary noxious weeds. All such infestations located were put under supervised control methods and will be closely observed for several seasons.

The Department of Agriculture has a contract with the California Division of Highways for the control of certain weeds along state highways. Ranchers and others concerned with the control of weed pests have found the results of this agreement to be highly advantageous. Also, in order to help these interested parties, new chemicals were applied on test plots of weeds, under various weather conditions and on different types of soil.

The Ventura County Department of Public Works, with its chemical weed control program along county roads, has been a tremendous help to agriculture.

The weeds below are under eradication measure in Ventura County:

Italian Thistle	Texas Blue Weed	White Horse Nettle
Johnson Grass	Pignut	Yellow Star Thistle
	Gaura Species	

The following are weeds that were treated in 1962, and a summary of materials used:

Bermuda Grass	Johnson Grass	Poverty Weed
Clotbur	Medusa Head Grass	Puncture Vine
Dogbane	Milkweed	Russian Knapweed
Hoary Cress	Morning Glory	Russian Thistle
Italian Thistle	Poison Oak	White Horse Nettle
	Yellow Star Thistle	

2,4-D Amine	15.88 qts.	Polybar Chlorate	24.0 lbs.
Amino Triazole	37.2 lbs.	Simazine	102.2 lbs.
Amitrol-T.	12.3 gals.	Telvar	13.0 lbs.
Dalapon.	169.33 lbs.	Trysben TBA.	8.0 gals.
Dinitro.	33.68 qts.	Weedone 638.	29.13 qts.
Fenac.	20.0 gals.	Straight Weed Oil.	5,052.0 gals.

Total area treated 3,596,595 sq. ft.

Total hours spent on weed control. 3,558

Total cost of weed control in 1962 \$ 7,608.33

RODENT CONTROL

Ground Squirrels

With all of Ventura County designated as bubonic plague area, special attention was given to the control of the California ground squirrel.

New sub-divisions in agricultural areas have stimulated the use of anti-coagulants baits, fumigants such as carbon-bisulfide and methyl bromide, and other non-secondary poison ground baits, because of the need to protect domestic animals from secondary poisons. Although these methods tend to increase labor costs, by close supervision of Department personnel very good results are being obtained.

Gophers

This pest caused severe damage in 1962 to citrus, avocados and other agricultural crops.

Poisoned baits were prepared and sold to ranchers at cost. Staff members gave many field demonstrations to instruct farmers in correct methods of poisoning and trapping. Poisoning and trapping programs were carried out along state highways as per our contract agreement with the California Division of Highways.

Rats

Because this rodent is a carrier of fleas that transmit diseases, stringent control programs were conducted against this pest. Cooperative agreements were made with some cities to control rats in sewer systems. Anti-coagulant grain baits were incorporated with paraffin wax and placed at strategic locations along the sewers. This proved to be an excellent means of control.

Anti-coagulant baits were given to farmers and others with rat problems, and demonstrations given as to best methods of applying same.

Miscellaneous Rodents

Field mice, cotton-tail rabbits, jack-rabbits and red fox squirrels were rodent nuisances to Ventura County agriculture. Many requests for help in combatting these pests were answered by this department. Poison grain baits were mixed and sold to farmers at cost.

Birds

Department personnel answered many calls pertaining to bird damage to crops. Young lettuce, cabbage and tomatoes suffered rather severe damage, as did seed crops, feed grain, deciduous fruits, peppers and strawberries. Linnets, white crowned sparrows, English sparrows, horned larks and blackbirds were predominant species causing trouble. Proper methods of pre-baiting and applying poison baits were demonstrated by our personnel. Baits were mixed and sold to farmers at cost.

Summary of the rodent control program for 1962:

Plague Control (Squirrels, Rats)

No. of acres treated in plague areas	203,130
No. of pounds of strychnine-treated grain	136
No. of pounds of 1080-treated grain	4,827
No. of pounds of warfarin-treated grain	2,513
No. of gallons of carbon bisulfide	940
No. of cases of methyl bromide capsules	47

Total cost of plague control \$ 20,899.58

Total hours spent on plague control 6,197

Rodent Control (Non-Plague)

No. of acres treated for non-plague rodents	8,700
No. of pounds strychnine-treated grain	4,854
No. of pounds pre-bait (for rabbits)	30
No. of cases of methyl bromide capsules	26
No. of ounces straight strychnine	28
No. of properties treated for birds	68
No. of pounds strychnine-treated bait for birds	1,053
No. of pounds pre-bait for birds	616
No. of ounces straight strychnine for birds	16

Total cost of material sold \$ 2,815.85

Total cost of non-plague rodent control \$ 4,552.09
(Less material sold)

Total hours spent on non-plague rodent control 2,274

TREATMENTS

Ventura County requires the treating or fumigation of all citrus and walnut trees before being planted. The work is done at the County Fumatorium at cost. This is a protection against the spread of serious insect pests unknown, or not widely spread, in this county, and for which eradication treatments are applied. This enables us to insure insect-free plant material without the necessity of rejecting and returning to point of origin.

The following is a summary of treatment work completed during the year 1962:

Vacuum Fumigation (HCN)

Citrus	295 lots	52,141 trees
--------	----------	--------------

Methyl Bromide Vacuum Fumigation

Citrus	5 lots	324 trees
Bags	14 "	12,461 bags
Miscellaneous	3 "	173 pieces

Methyl Bromide Atmospheric Fumigation

Citrus	16 lots	1,500 trees
Pepper Seed	4 "	134 sacks
Miscellaneous	1 "	3 boxes

Number of hours spent on fumigation 2,760

SHIP INSPECTIONS

The inspection of ships is made by the members of the Agricultural Commissioner's office. State and Federal quarantines restrict the movement of certain materials likely to introduce serious insect and disease pests. Ship's stores, cargo and passenger baggage, as well as the crew's quarters, are inspected for restricted items. Whenever found in violation, they are properly disposed of to safeguard the agricultural industry.

Garbage disposal is carefully enforced by the department to prevent the introduction of foot and mouth disease.

Number of ship inspections, 1962. 36
Number of hours spent on ship inspection. 112

APIARY INSPECTION

One of the duties required of this office is the inspection of apiaries for bee diseases. One man is employed full time to work with the beekeepers.

Because of the hazard of bee losses due to insecticide poisoning, we maintain a map recording all locations of apiaries in the county. This information is available to all parties concerned. The interest shown by both beekeepers and pest control operators proved effective, with little loss occurring during the year. Most beekeepers cooperated by promptly reporting all movement of bees.

Late rains were a factor in honey production, causing a good yield to the beekeeper.

Violations of the Agricultural Code proved costly to two beekeepers. Court proceedings were instituted, with both being found guilty and fined.

The following is a summary of the inspections made in apiaries in 1962:

	<u>No. Apiaries</u>	<u>No. Colonies</u>
Registered	215	15,000
Inspected	249	13,381
Infected with European Foulbrood	14	24
Infected with American Foulbrood	76	206
Burned for American Foulbrood	76	206
American Foulbrood to Wax Salvage	0	0
Man hours spent on apiary inspection.		2,078

BIOLOGICAL CONTROL OF INSECTS

As new beneficial insects are discovered, introduced and established in California, and as more information becomes available regarding the co-ordination of chemical and biological control, additional use is being made of this important means of insect control.

For many years, the citrus growers of this county have recognized the value of biological control, and have taken advantage of this means of control. During the past year this emphasis has been increased, especially in the Fillmore area.

Following is a brief summary of the beneficial insects produced in the county during 1962.

<u>Parasite</u>	<u>Host</u>	<u>Number</u>
<u>Aphycus (Metaphycus) helvolus</u>	Black Scale	4,000,000
<u>Aphycus (Metaphycus) lounsburyi</u>	Black Scale	25,000
<u>Aphytis melinus</u>	Red Scale	17,317,000
<u>Cryptolaemus montrouzieri</u>	Mealy Bug	48,386,000
<u>Coccophagus scutellaris</u>	Black Scale	10,000
<u>Leptomastix dactylopii</u>	Mealy Bug	46,350,000
<u>Pauridea peregrina</u>	Mealy Bug	4,950,000
Lacewings	Aphids	500,000
<u>Trichogramma minutum</u> (not released in Ventura County)	Lepidoptera	950,000,000

PREDATORY ANIMAL CONTROL

Ventura County entered into an agreement with the Fish and Wildlife Service, United States Department of Interior, in cooperation with the United States Department of Agriculture, in 1956, to furnish a predatory animal trapper. This was to augment a trapping program already in effect by the Agricultural Commissioner's office. The purpose was to decrease the population of skunks and other small animals presumed to be infected with rabies. Since Ventura County has been designated as one of the areas where rabies in animals is known to exist, this agreement is still in effect, with the Commissioner's office still assisting in the program.

Below is a tabulation of the results for this trapping program in 1962:

<u>Animal</u>	<u>Number</u>
Badger	28
Bobcat	116
Bear	1
Coyote	48
Fox	100
Lion	2
Opossum	191
Raccoon	39
Skunk	<u>291</u>
Total	816

FINANCIAL STATEMENT
 FISCAL YEAR 1961-1962
 VENTURA COUNTY DEPARTMENT OF AGRICULTURE

SALARIES AND WAGES

Commissioner	\$ 9,856.00	
Deputy Commissioners (3)	22,536.00	
Inspectors	126,239.78	
Office Help	10,952.20	
Extra Help	21,319.69	\$ 190,903.67

MAINTENANCE AND OPERATION 28,907.51

CAPITAL OUTLAY 4,843.99 \$224,655.17

REVENUE 29,982.82

CLASSIFICATION OF ESTIMATED EXPENDITURES BY FUNCTIONS:

Plant Quarantine (Interstate)	\$ 15,875.23	
Plant Quarantine (Intrastate)	23,972.36	
Standardization	30,667.57	
Insect Detection and Survey	7,712.80	
Plant Disease Detection and Survey	4,311.42	
Nursery Inspection	10,526.67	
Seed Inspection	4,478.18	
Rodent Control (County Expense)	8,322.74	
Plague Suppression (County Expense)	24,039.28	
Weed Control (County Expense)	10,235.50	
Apiary Inspection	7,840.70	
Pest Control Operator Enforcement	6,792.06	
Pest Control and Eradication Program	20,835.84	
Crop Statistics	6,540.74	
Other Items *	37,660.09	\$219,811.18

CAPITAL OUTLAY 4,843.99

* Functions Included in Other Items:

Vacuum Fumigation	\$ 8,036.67
Lettuce Inspection	4,341.14
Miscellaneous	25,282.28

VENTURA COUNTY
DEPARTMENT OF AGRICULTURE

Agricultural Building
Santa Barbara and Eighth Streets
Santa Paula, California

To The Director of the State Department of Agriculture:

Pursuant to Section 65.5 of the Agricultural Code, we submit the crop production, crop value and acreage report for the calendar year 1962.

The total values shown in this report are the highest on record for the County of Ventura. Part of this increase can be attributed to better means of gathering information and in some cases, better prices. These price increases were especially noted in celery, cabbage, lemons and oranges.

Credit should be given to growers who, in spite of growing urban developments, increased taxes and unfavorable weather during parts of the growing season, continued to operate and added greatly to the economy of the county.

Prices of production and labor rose during the year, and in some cases, little or no real profit was gained.

This report is based entirely on F.O.B. figures and in no way indicates profit or loss to the grower.

We are indebted to many individuals, companies, firms, and corporations who aided in compiling this report. To them we extend our thanks for this fine cooperation.



C.J. Barrett
Agricultural Commissioner

ACREAGE OF AGRICULTURAL CROPS FOR 1962

The following are the acres devoted to major agricultural crops in Ventura County. The non-bearing acres are those on which trees and vines are 5 years of age or less. A re-survey was conducted during the latter part of 1962 which brought the fruit and nut tree acreage up to date.

CROP	BEARING ACRES	NON-BEARING ACRES	TOTAL ACRES
Almonds	38.0	0	38.0
Apples	42.4	1.9	44.3
Apricots	159.6	4.1	163.7
Avocados	2,336.2	552.2	2,888.4
Carob	0	7.5	7.5
Cherimoya	0.5	0	0.5
Citron	4.7	0	4.7
Grapefruit	399.0	313.7	712.7
Grapes	43.1	0	43.1
Lemons	20,886.7	2,251.7	23,138.4
Macadamia Nuts	0	4.9	4.9
Olives	21.2	0	21.2
Orange, Navel	1,944.0	209.0	2,153.0
Orange, Valencia	15,066.0	2,713.7	17,779.7
Peaches	19.8	4.3	24.1
Pears	2.6	0	2.6
Strawberries	461.0	0	461.0
Tangerines	16.1	22.3	38.4
Walnuts	6,116.4	253.6	6,370.0
Beans, Dry	14,700.0	0	14,700.0
Beans, Seed	1,286.0	0	1,286.0
Cut Flowers	1,177.0	0	1,177.0
Hay & Grain	8,474.0	0	8,474.0
Nursery Stock	258.0	0	258.0
Seed	1,835.0	0	1,835.0
Sugar Beets	345.0	0	345.0
Vegetables	<u>42,642.0</u>	<u>0</u>	<u>42,642.0</u>
	<u>118,274.3</u>	<u>6,338.9</u>	<u>124,613.2</u>

FRUIT AND NUT CROPS
ACREAGE, PRODUCTION AND VALUES 1961 - 1962

CROP	YEAR	BEARING ACREAGE	PER ACRE	PRODUCTION		VALUE	
				TOTAL	UNIT	PER UNIT	TOTAL
APPLES	1962	42	6.50	272	Ton	\$ 150.00	\$ 40,900
	1961	52	7.69	400	"	80.00	32,000
AVOCADOS	1962	2,337	2.30	5,384	"	210.00	1,109,600
	1961	2,375	1.80	4,275	"	395.00	1,688,000
GRAPES	1962	42	2.50	105	"	60.00	6,300
	1961	67	2.00	134	"	60.00	8,000
GRAPEFRUIT							
Total	1962	399	19.81	7,898	"	68.86	544,000
	1961	364	17.70	6,444	"	89.30	575,000
Fresh Market	1962			4,680	"	106.64	499,000
	1961			5,147	"	107.00	551,000
Processed	1962			3,218	"	14.00	45,000
	1961			1,297	"	19.00	24,000
LEMONS							
Total	1962	20,886	14.47	307,107	"	101.24	31,093,000
	1961	22,656	13.60	308,000	"	97.66	30,079,000
Fresh Market	1962			195,191	"	135.59	27,467,000
	1961			204,000	"	128.00	26,112,000
Processed	1962			111,916	"	32.40	3,626,000
	1961			104,000	"	38.15	3,967,000
ORANGES, NAVEL							
Total	1962	1,944	8.48	16,704	"	181.30	3,028,400
	1961	1,991	8.00	15,940	"	174.00	2,774,700
Fresh Market	1962			13,921	"	210.54	2,931,000
	1961			14,220	"	190.80	2,713,000
Processed	1962			2,783	"	35.00	97,400
	1961			1,719	"	35.90	61,700
ORANGES, VALENCIA							
Total	1962	15,055	10.03	151,215	"	137.24	20,753,600
	1961	16,320	9.52	155,200	"	119.10	18,490,800
Fresh Market	1962			109,798	"	169.35	18,595,000
	1961			106,800	"	145.60	15,549,000
Processed	1962			41,417	"	52.12	2,158,600
	1961			48,470	"	60.00	2,909,000

FRUIT AND NUT CROPS
ACREAGE, PRODUCTION AND VALUE 1961 - 1962

CROP	YEAR	BEARING ACREAGE	PER ACRE	PRODUCTION		VALUE	
				TOTAL	UNIT	PER UNIT	TOTAL
STRAWBERRIES							
Total	1962	461	12.32	5,687	Ton	\$ 352.57	\$ 2,016,300
	1961	520	10.00	5,330	"	330.80	1,753,000
Fresh Market	1962			3,255	"	470.00	1,530,000
	1961			2,430	"	475.00	1,154,000
Processed	1962			2,432	"	200.00	486,300
	1961			2,900	"	210.00	609,000
TANGERINES							
	1962	16	3.50	56	"	186.00	10,400
	1961	24	4.50	110	"	220.00	24,200
WALNUTS							
	1962	6,116	.70	4,308	"	490.00	2,111,000
	1961	7,954	.27	2,115	"	523.00	1,106,000
TOTAL							
	1962	47,298					\$ 60,713,500
	1961	52,323					56,540,700

VEGETABLE CROPS
ACREAGE, PRODUCTION AND VALUE 1961 - 1962

CROP	YEAR	HARVEST- ED ACREAGE	PER ACRE	PRODUCTION		VALUE	
				TOTAL	UNIT	PER UNIT	TOTAL
BEANS, GREEN							
Processed	1962	12,250	2.03	24,905	Ton	\$ 168.00	\$ 4,184,000
	1961	13,200	1.96	25,900	"	166.00	4,299,000
BEANS, POLE							
	1962	30	8.00	240	"	151.00	36,200
	1961	42	8.00	334	"	157.00	52,440
BEETS, RED							
	1962	30	8.00	240	"	50.00	12,000
	1961	60	9.35	561	"	41.40	23,200

VEGETABLE CROPS
ACREAGE, PRODUCTION AND VALUE 1961 - 1962

CROP	YEAR	HARVEST- ED ACREAGE	PER ACRE	PRODUCTION		VALUE	
				TOTAL	UNIT	PER UNIT	TOTAL
						\$	\$
BROCCOLI							
Processed	1962	1,520	2.14	3,252	Ton	160.00	420,300
	1961	2,106	3.00	6,318	"	155.90	985,000
CABBAGE, RED	1962	91	12.00	1,092	"	60.00	65,500
	1961	67	14.00	938	"	59.30	55,600
CABBAGE, GREEN	1962	2,221	14.88	33,048	"	75.26	2,387,200
	1961	1,292	15.00	19,380	"	50.00	969,000
CARROTS	1962	385	15.10	5,816	"	45.00	261,700
	1961	538	13.20	7,114	"	60.30	429,000
CAULIFLOWER	1962	544	4.12	2,284	"	120.00	274,200
	1961	376	6.00	2,244	"	63.00	141,000
CELERY	1962	2,190	29.25	64,057	"	104.92	6,721,000
	1961	2,424	27.00	65,448	"	53.30	3,490,000
CHARD	1962	8	9.05	72	"	62.50	4,500
	1961	70	10.76	753	"	61.60	46,400
CORN, SWEET	1962	178	3.00	534	"	65.00	34,700
	1961	92	2.50	230	"	81.30	18,700
CUCUMBERS							
Total	1962	485	12.20	5,930	"	73.08	433,500
	1961	517	11.25	5,820	"	99.30	578,000
Fresh Market	1962	305	11.25	3,431	"	83.20	285,500
	1961	337	11.70	3,950	"	118.00	468,000
Pickling	1962	180	13.90	2,500	"	59.00	148,000
	1961	180	10.40	1,870	"	58.80	110,000
LETTUCE							
Total	1962	5,468	9.78	53,500	"	84.86	4,540,000
	1961	5,542	10.55	58,492	"	60.70	3,548,000
Head	1962	3,560	9.26	34,983	"	90.80	3,180,200
	1961	3,740	10.70	40,200	"	60.50	2,431,000
Leaf	1962	753	7.50	5,648	"	88.00	497,000
	1961	510	8.00	4,080	"	65.00	265,000
Romaine	1962	1,155	11.08	12,806	"	62.50	866,700
	1961	1,292	11.00	14,212	"	60.00	852,000

VEGETABLE CROPS
ACREAGE, PRODUCTION AND VALUE 1961 - 1962

CROP	YEAR	HARVEST- ED ACREAGE	PER ACRE	PRODUCTION		VALUE	
				TOTAL	UNIT	PER UNIT	TOTAL
ONIONS, GREEN	1962	108	18.00	1,944	Ton	\$ 75.36	\$ 146,500
	1961	35	20.00	700	"	88.00	61,500
PARSLEY	1962	175	22.35	4,012	"	51.00	205,000
	1961	153	30.50	4,670	"	51.00	238,000
PEAS							
Processed	1962	2,440	.76	1,870	"	83.00	155,000
	1961	3,050	1.10	3,350	"	81.20	272,000
PEPPERS, BELL							
Total	1962	533	10.00	5,343	"	76.00	406,400
	1961	610	9.00	5,500	"	82.50	454,000
Fresh Market	1962	193		1,544	"	120.00	186,000
	1961	290		2,300	"	120.80	278,000
Processed	1962	340		3,800	"	58.00	220,400
	1961	320		3,200	"	55.00	176,000
PEPPERS, GREEN CHILI							
	1962	1,670	7.70	12,875	"	65.00	832,000
	1961	1,236	7.00	8,650	"	65.00	562,000
PEPPERS, PIMIENTOS							
	1962	707	8.20	5,802	"	67.50	391,600
	1961	805	7.80	6,280	"	65.60	412,000
SPINACH							
Total	1962	1,110	6.61	7,338	"	54.18	397,600
	1961	1,020	8.06	8,230	"	40.00	329,000
Fresh Market	1962			2,748	"	100.00	274,800
	1961			2,350	"	73.20	172,000
Processed	1962			4,590	"	26.75	122,800
	1961			5,880	"	26.70	157,000
SQUASH, WINTER							
	1962	205	10.00	2,050	"	20.00	41,000
	1961	186	7.50	1,395	"	20.00	27,900

VEGETABLE CROPS
ACREAGE, PRODUCTION AND VALUE 1961 - 1962

CROP	YEAR	HARVEST- ED ACREAGE	PER ACRE	PRODUCTION		VALUE	
				TOTAL	UNI	PER UNIT	TOTAL
TOMATOES							
Total	1962	9,700	18.63	181,032	Ton	\$ 57.19	\$ 10,354,500
	1961	9,758	15.30	149,300	"	61.40	9,166,000
Fresh Market	1962			61,932	"	113.00	7,033,700
	1961			48,500	"	126.00	6,111,000
Processed	1962			119,100	"	27.88	3,320,800
	1961			100,800	"	30.30	3,055,000
TOMATOES, CHERRY	1962	48	14.20	681	"	112.00	76,400
	1961	42	14.00	588	"	200.70	118,000
MISC. VEGETABLES	1962	546	6.00	3,276	"	60.00	208,500
	1961	405	8.00	3,240	"	60.00	194,000
MUSHROOMS	1962			10,685	CWT	43.00	462,500
	1961			10,770	"	50.00	538,500
<hr/>							
<u>TOTAL</u>	1962	42,642					\$ 33,051,800
	1961	43,626					27,008,240

CUT FLOWER PRODUCTION

CROP	YEAR	ACREAGE	TOTAL VALUE
CUT FLOWERS	1962	1,177	\$ 1,681,500
	1961	1,054	1,526,000
<hr/>			
TOTAL	1962		\$ 1,681,500
	1961		1,526,000

FIELD CROPS
ACREAGE, PRODUCTION AND VALUE 1961 - 1962

CROP	YEAR	HARVEST- ED ACREAGE	PER ACRE	PRODUCTION		VALUE	
				TOTAL	UNIT	PER UNIT	TOTAL
BEANS							
Limas, Dry	1962	14,700	1.05	15,400	Ton	\$ 220.00	\$ 3,388,000
	1961	13,600	1.03	13,990	"	310.00	4,337,000
Seed Beans	1962	1,286	1.15	1,482	"	273.75	405,700
	1961	3,760	1.15	4,324	"	310.00	1,340,000
HAY							
Alfalfa, Green	1962	728	30.00	21,840	"	5.50	120,000
	1961	760	30.00	22,800	"	5.50	125,000
Oats, Barley	1962	3,300	1.16	3,828	"	32.00	122,500
	1961	3,156	.80	2,525	"	30.00	75,700
GRAIN							
Barley	1962	4,446	.85	3,828	"	49.00	185,000
	1961	1,400	.70	980	"	47.50	46,500
PERMANENT PASTURE		1962	497				
		1961	685				
SEED							
Flower	1962	101	239.00	24,140	lbs.	3.22	81,200
	1961	265	103.39	27,400	"	2.30	63,000
Vegetable	1962	1,734	225.00	390,600	"	2.81	1,098,400
	1961	1,312	256.00	336,228	"	2.88	970,000
SUGAR BEETS							
	1962	345	22.52	7,770	Ton	10.81	78,500
	1961	760	28.55	21,700	"	13.00	282,000
TOTAL		1962	27,137				\$ 5,479,300
		1961	25,698				7,239,200

NURSERY STOCK PRODUCTION

NURSERY STOCK	YEAR	PRODUCTION	VALUE
AVOCADOS, TREES	1962	9,560	\$ 23,900
	1961	6,000	15,000
CITRUS, TREES	1962	161,800	404,600
	1961	114,000	285,000
WALNUT, TREES	1962	11,500	14,400
	1961	12,000	15,000
ORNAMENTALS, PLANTS	1962	70,000	107,500
	1961	65,158	69,000
VEGETABLES, PLANTS			
Flats	1962	404,000	283,700
	1961	550,500	376,000
TOMATO PLANTS			
Field Grown	1962	109,687,000	764,500
	1961	127,985,000	742,000
<u>TOTAL</u>	1962		\$ 1,598,600
	1961		1,502,000

APIARY PRODUCTS

CROP	YEAR	PRODUCTION		VALUE	
		TOTAL	UNIT	PER UNIT	TOTAL
HONEY	1962	1,000	Tons	\$ 240.00	\$ 240,000
	1961	150	"	260.00	39,000
WAX	1962	80	"	860.00	64,000
	1961	20	"	860.00	17,200
<u>TOTAL</u>	1962			\$	304,000
	1961				56,200

Number of apiaries. 215
Number of colonies. 15,000

LIVESTOCK AND POULTRY
PRODUCTION AND VALUE 1961 - 1962

CROP	YEAR	PRODUCTION		VALUE		
		TOTAL	UNIT	PER UNIT	TOTAL	
HOGS	1962	7,430	Head	\$ 41.00	\$ 304,600	
	1961	8,200	"	34.00	279,000	
CATTLE	Range	1962	6,800	"	228.00	1,550,400
		1961	7,020	"	180.00	1,263,600
	Dairy	1962	2,011	"	170.00	342,000
		Feed Yard, Gain in Lbs.	1962	25,374,900	Lbs.	.24
	1961	23,423,000	"	.23	5,387,000	
CHICKEN EGGS	1962	17,073,500	Dz.	.30	5,122,000	
	1961	14,018,000	"	.37	5,187,000	
CHICKEN MEAT	1962	1,321,816	Lbs.	.05	66,000	
	1961	1,318,000	"	.07	92,200	
SQUABS	1962	0			0	
	1961	32,000	Bird	1.00	32,000	
TURKEYS	1962	123,000	"	4.80	590,400	
	1961	211,000	"	4.30	907,000	
<u>TOTAL</u>	1962				\$14,065,300	
	1961				13,147,800	

DAIRY PRODUCTS

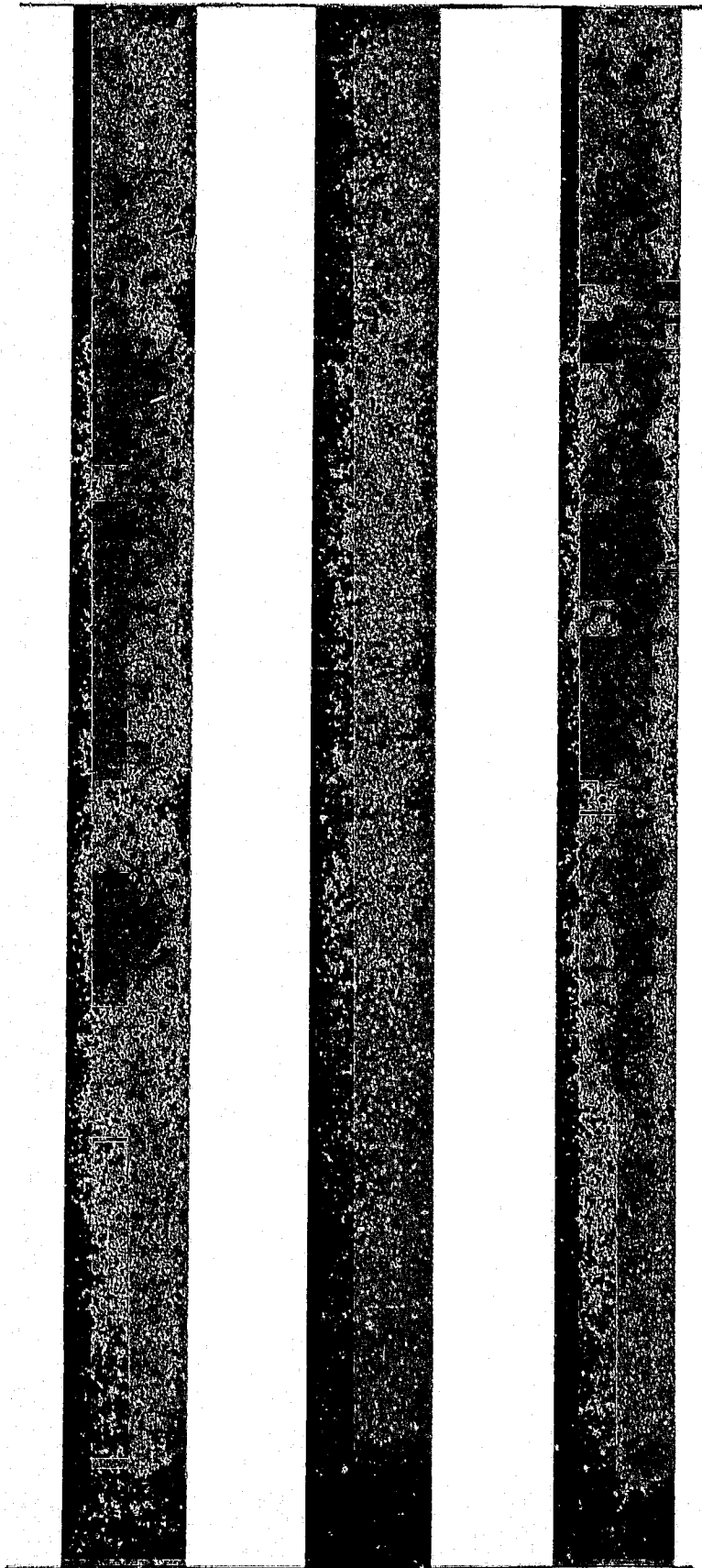
PRODUCT	YEAR	PRODUCTION		VALUE	
		TOTAL	UNIT	PER UNIT	TOTAL
MARKET MILK	1962	640,000	CWT	\$ 5.31	\$ 3,398,000
MFG. MILK	1962	2,540	"	3.15	8,000
ESTIMATED REVENUE	1962				\$ 3,406,000
	1961				3,623,000

AGRICULTURAL CROP REPORT RECAPITULATION

	YEAR	ACREAGE	VALUE
FRUIT & NUT CROPS	1962	47,298	\$ 60,713,500
	1961	52,323	56,540,700
VEGETABLE CROPS	1962	42,642	33,051,800
	1961	43,626	27,008,240
CUT FLOWERS	1962	1,177	1,681,500
	1961	1,054	1,526,000
FIELD CROPS	1962	27,131	5,471,300
	1961	25,698	7,239,200
NURSERY STOCK	1962		1,598,600
	1961		1,502,000
APIARY PRODUCTS	1962		304,000
	1961		56,200
LIVESTOCK & POULTRY	1962		14,065,300
	1961		13,147,800
DAIRY PRODUCTS	1962		3,406,000
	1961		3,623,000
<u>GRAND TOTAL CROP REPORT</u>		1962	\$ 120,292,000
		1961	110,643,140

=====

1957 Crop Valuation	\$ 82,473,986
1958 Crop Valuation	100,666,263
1959 Crop Valuation	102,821,348
1960 Crop Valuation	102,631,750
1961 Crop Valuation	110,643,140
1962 Crop Valuation	120,292,000



1963

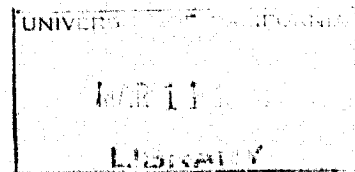
VENTURA COUNTY

ANNUAL REPORT

AND
CROP STATISTICS

1963

AGRICULTURAL
COMMISSIONER



ANNUAL REPORT
OF
C. J. BARRETT
AGRICULTURAL COMMISSIONER
COUNTY OF VENTURA
CALIFORNIA
FOR
YEAR ENDING DECEMBER 31, 1963

TO

VENTURA COUNTY BOARD OF SUPERVISORS

H. F. ROBINSON, District 1, Chairman
(Ventura, Montalvo & Saticoy)

JOHN C. MONTGOMERY, District 2
(Camarillo, Conejo Valley,
Moorpark & Simi)

FRED E. IRELAND, District 4
(Santa Paula, Fillmore & Piru)

J. K. MACDONALD, District 3
(Ojai, Meiner Oaks, Oak View,
Casitas Springs, Foster Park &
Ventura Avenue)

EDWIN L. GARTY, District 5
(Oxnard, Port Hueneme, El Rio
& Nyeland Acres)

AND

CHARLES PAUL, DIRECTOR OF AGRICULTURE

STATE OF CALIFORNIA

IN MEMORIAM
WALTER M. DUNNING
1893 - 1963

This issue of our annual report is dedicated to the memory of Walter M. Dunning, Senior Agricultural Inspector, who was employed by the Ventura County Department of Agriculture from April 1, 1922 to August 9, 1963.

Mr. Dunning was a dedicated public servant whose enjoyment came from doing a good job in serving those with whom he associated.

DEPARTMENT PERSONNEL

COMMISSIONER

Deputy Commissioner
Deputy Commissioner
Deputy Commissioner

Supervising Inspector - Nursery, Seed & Plant Disease
Supervising Inspector - Standardization

Vacuum Fumigation

Sr. Inspector, Ventura

Sr. Inspector, Oxnard - Quarantine
Sr. Inspector, Oxnard - Quarantine
Sr. Inspector, Oxnard - Standardization & Pest Control
Sr. Inspector, Oxnard - Egg & Poultry Standardization
Inspector, Oxnard - Standardization
Inspector, Oxnard - Standardization

Sr. Inspector, Moorpark-Simi
Inspector, Moorpark-Simi - Weed & Rodent Control

Sr. Inspector, Ojai

Sr. Inspector, Fillmore-Bardsdale

Sr. Inspector, Camarillo-Somis-Thousand Oaks
Inspector, Camarillo -Somis-Thousand Oaks

Sr. Inspector, Santa Paula
Inspector, Santa Paula - Weed & Rodent & Plague Control

Sr. Inspector, Apiary

Agricultural Field Assistant
Agricultural Field Assistant
Agricultural Field Assistant
Agricultural Field Assistant

Account Clerk

Record Clerk
Part-time Record Clerk
Part-time Record Clerk

C. J. BARRETT

John C. Allee
Harry E. Bronson
John L. Schall

Verner E. Holmer
Paul B. Travis

Murl Boren

Donald Anderson

Richard Chase
Walter M. Dunning
Clyde May
Kenneth Weiss
Gene Fidel
Donald Hare

I.L. Clements
Bruce Burns

Marvin Paregien

Harold Hawkins

W. Mark Jones
Richard Watts

Ed R. Urban
Floyd Ward

Glenn M. Smith

Robert Evans
Glen Hackworth
Carroll Hannah
Carl Whittaker, Jr.

Shirley Carter

Margaret Wallace
Ramona Chavez
Angie Cardella

VENTURA COUNTY
DEPARTMENT OF AGRICULTURE

Agricultural Building
Santa Barbara and Eighth Streets
Santa Paula, California

To The Director of the State Department of Agriculture:

Pursuant to Section 65.5 of the Agricultural Code, we submit the crop production, crop value and acreage report for the calendar year 1963.

The total values shown in this report are the highest on record for Ventura County. The increase is partly due to better means of gathering information and to price increases on citrus fruits.

Credit is due to all growers in the county who, in spite of rising prices of labor, equipment, and materials plus increases in taxes continue to make the best use possible of a shrinking agricultural acreage.

This report is based entirely on the F.O.B. value of the crops, and in no way indicates net returns to the growers. Values include all the expenses necessary to grow, prepare and package the crops for sale.

We are indebted to many individuals, companies, firms, and corporations who aided in compiling this report. To them, we extend our thanks and appreciation for their assistance and cooperation.

C. J. Barrett

C. J. Barrett
Agricultural Commissioner

FINANCIAL STATEMENT
 FISCAL YEAR 1962-1963
 VENTURA COUNTY DEPARTMENT OF AGRICULTURE

SALARIES AND WAGES

Commissioner	\$ 10,343.00	
Deputy Commissioners (3)	24,345.00	
Inspectors	136,655.67	
Office Help	11,715.92	
Extra Help	24,406.29	\$ 207,465.88

MAINTENANCE AND OPERATION

28,251.79

CAPITAL OUTLAY

704.16

\$236,421.83

REVENUE

35,652.60

CLASSIFICATION OF ESTIMATED EXPENDITURES BY FUNCTIONS:

Plant Quarantine (Interstate)	\$ 13,601.74	
Plant Quarantine (Intrastate)	27,080.77	
Standardization	36,422.36	
Insect Detection and Survey	6,419.84	
Plant Disease Detection and Survey	6,353.71	
Nursery Inspection	11,474.79	
Seed Inspection	4,449.64	
Rodent Control (County Expense)	7,413.61	
Plague Suppression (County Expense)	25,457.87	
Weed Control (County Expense)	12,235.84	
Apiary Inspection	8,226.06	
Pest Control Operator Enforcement	3,648.70	
Pest Control and Eradication Program	34,329.37	
Crop Statistics	6,614.77	
Other Items (Miscellaneous)	32,692.76	\$236,421.83

ACREAGE OF AGRICULTURAL CROPS FOR 1963

The following are the acres devoted to major agricultural crops in Ventura County. The non-bearing acres are those on which trees and vines are 5 years of age or less.

CROP	BEARING ACRES	NON-BEARING ACRES	TOTAL ACRES
Almonds	37.9		37.9
Apples	43.0	0.3	43.3
Apricots	173.6	2.1	175.7
Avocados	2,574.2	299.8	2,874.0
Carob		7.5	7.5
Cherimoya		0.5	0.5
Citron	4.7		4.7
Grapefruit	482.2	253.9	736.1
Grapes	42.5	0.6	43.1
Lemons	22,895.2	1,101.8	23,997.0
Macadamia Nuts	2.6	2.3	4.9
Olives	21.2		21.2
Orange, Navel	2,039.2	112.1	2,151.3
Orange, Valencia	15,435.8	2,605.7	18,041.5
Peaches	21.4	4.3	25.7
Pears	2.6		2.6
Strawberries	480.0		480.0
Tangerines	21.2	18.4	39.6
Walnuts	5,581.3	102.7	5,684.0
Beans, Dry	14,500.0		14,500.0
Beans, Seed	1,291.0		1,291.0
Cut Flowers	1,160.0		1,160.0
Hay & Grain	6,871.0		6,871.0
Nursery Stock	235.0		235.0
Seed	1,439.0		1,439.0
Sugar Beets	1,882.0		1,882.0
Vegetables	41,514.0		41,514.0
Total	118,750.6	4,512.0	123,262.6

FRUIT AND NUT CROPS
ACREAGE, PRODUCTION AND VALUES 1962 - 1963

CROP	YEAR	BEARING ACREAGE	PER ACRE	PRODUCTION		VALUE	
				TOTAL	UNIT	PER UNIT	TOTAL
APPLES	1963	43	8.22	353	Ton	\$ 100.00	\$ 35,300
	1962	42	6.50	272	"	150.00	40,900
AVOCADOS	1963	2,574	1.81	4,654	"	267.00	1,242,700
	1962	2,337	2.30	5,384	"	210.00	1,109,600
GRAPEFRUIT							
Total	1963	482	16.47	7,941	"	112.05	889,800
	1962	399	19.81	7,898	"	68.86	544,000
Fresh Market	1963			5,081	"	168.37	855,500
	1962			4,680	"	106.64	499,000
Processed	1963			2,860	"	12.00	34,300
	1962			3,218	"	14.00	45,000
LEMONS							
Total	1963	22,895	12.61	288,616	"	133.76	38,606,100
	1962	20,886	14.47	307,107	"	101.24	31,093,000
Fresh Market	1963			202,925	"	160.40	32,549,100
	1962			195,191	"	135.69	27,467,000
Processed	1963			85,691	"	70.68	6,057,000
	1962			111,916	"	32.40	3,626,000
ORANGES, NAVEL							
Total	1963	2,039	10.09	20,584	"	205.53	4,230,700
	1962	1,944	8.48	16,704	"	181.30	3,028,400
Fresh Market	1963			17,750	"	231.56	4,110,200
	1962			13,921	"	210.54	2,931,000
Processed	1963			2,834	"	42.51	120,500
	1962			2,783	"	35.00	97,400
ORANGES, VALENCIA							
Total	1963	15,436	12.78	197,310	"	135.21	26,679,300
	1962	15,055	10.03	151,215	"	137.24	20,753,600
Fresh Market	1963			129,611	"	167.62	21,725,100
	1962			109,798	"	169.30	18,595,000
Processed	1963			67,699	"	73.18	4,954,200
	1962			41,417	"	52.12	2,158,600

FRUIT AND NUT CROPS
ACREAGE, PRODUCTION AND VALUE 1962-1963

CROP	YEAR	BEARING ACREAGE	PER ACRE	PRODUCTION		VALUE	
				TOTAL	UNIT	PER UNIT	TOTAL
STRAWBERRIES							
Total	1963	480	11.50	5,520	Ton	\$ 411.25	\$ 2,270,100
	1962	461	12.32	5,687	"	352.57	2,016,300
Fresh Market	1963			4,032	"	480.00	1,935,300
	1962			3,255	"	470.00	1,530,000
Processed	1963			1,488	"	225.00	334,800
	1962			2,432	"	200.00	486,300
TANGERINES	1963	21	2.70	57	"	261.40	14,900
	1962	16	3.50	56	"	186.00	10,400
WALNUTS	1963	5,581	.32	1,811	"	400.11	724,600
	1962	6,116	.70	4,308	"	490.00	2,111,000
TOTAL	1963	49,550					\$ 74,693,500
	1962	47,298					60,713,500

VEGETABLE CROPS
ACREAGE, PRODUCTION AND VALUE 1962 - 1963

CROP	YEAR	HARVEST- ED ACREAGE	PER ACRE	PRODUCTION		VALUE	
				TOTAL	UNIT	PER UNIT	TOTAL
BEANS, GREEN							
Processed	1963	11,200	1.91	21,400	Ton	\$ 174.00	\$ 3,724,000
	1962	12,250	2.03	24,900	"	168.00	4,184,000
BEANS, POLE	1963	159	5.22	830	"	180.60	149,900
	1962	30	8.00	240	"	151.00	36,200
BEETS, RED	1963	47	9.21	433	"	49.69	21,520
	1962	30	8.00	240	"	50.00	12,000

VEGETABLE CROPS
ACREAGE, PRODUCTION AND VALUE 1962 - 1963

CROP	YEAR	HARVEST- ED ACREAGE	PER ACRE	PRODUCTION		VALUE	
				TOTAL	UNIT	PER UNIT	TOTAL
BROCCOLI							
Processed	1963	1,509	2.50	3,773	Ton	\$ 165.00	\$ 622,500
	1962	1,520	2.14	3,252	"	160.00	520,300
CABBAGE, RED	1963	139	11.00	1,529	"	35.58	54,400
	1962	91	12.00	1,092	"	60.00	65,500
CABBAGE, GREEN	1963	2,122	11.00	23,342	"	35.00	817,000
	1962	2,221	14.88	33,048	"	75.26	2,487,000
CARROTS	1963	313	15.61	4,889	"	40.00	195,500
	1962	385	15.10	5,816	"	45.00	261,700
CAULIFLOWER	1963	501	4.87	2,442	"	119.00	290,600
	1962	544	4.12	2,284	"	120.00	274,200
CELERY	1963	2,490	30.00	74,700	"	56.00	4,183,200
	1962	2,190	29.25	64,057	"	104.92	6,721,000
CHARD	1963	62	12.00	744	"	50.00	37,200
	1962	8	9.05	72	"	62.50	4,500
CORN, SWEET	1963	138	3.50	483	"	70.00	33,800
	1962	178	3.00	534	"	65.00	34,700
CUCUMBERS							
Total	1963	368	11.36	4,182	"	91.39	382,200
	1962	485	12.20	5,930	"	73.08	433,500
Fresh Market	1963			3,522	"	98.00	345,200
	1962			3,950	"	83.20	285,500
Pickling	1963			660	"	56.00	37,000
	1962			2,500	"	59.00	148,000
LETTUCE							
Total	1963	7,746	11.64	90,136	"	52.01	4,687,900
	1962	5,468	9.78	53,500	"	84.86	4,467,600
Head	1963	5,445	10.07	54,851	"	56.52	3,100,200
	1962	3,560	9.26	34,983	"	90.80	3,180,200
Leaf	1963	486	10.20	4,957	"	66.00	327,200
	1962	753	7.50	5,648	"	88.00	497,000
Romaine	1963	1,815	11.20	20,328	"	62.00	1,260,500
	1962	1,155	11.08	12,806	"	62.50	790,400

VEGETABLE CROPS
ACREAGE, PRODUCTION AND VALUE 1962 - 1963

CROP	YEAR	HARVEST- ED ACREAGE	PER ACRE	PRODUCTION		VALUE	
				TOTAL	UNIT	PER UNIT	TOTAL
ONIONS, GREEN	1963	205	13.34	2,735	Ton	\$ 56.82	\$ 155,400
	1962	108	18.00	1,944	"	88.00	61,500
PARSLEY	1963	240	28.00	6,720	"	39.00	262,000
	1962	175	22.35	4,012	"	51.00	205,000
PEAS							
Processed	1963	2,100	1.41	2,961	"	83.01	245,800
	1962	2,400	.76	1,870	"	83.00	155,000
PEPPERS, BELL							
Total	1963	794	7.47	5,937	"	74.23	440,700
	1962	533	10.00	5,343	"	76.00	406,400
Fresh Market	1963	270		2,112	"	100.00	211,200
	1962	193		1,544	"	120.00	186,000
Processed	1963	524		3,825	"	60.00	229,500
	1962	340		3,800	"	58.00	220,400
PEPPERS, GREEN CHILI	1963	1,629	6.00	9,774	"	65.00	635,300
	1962	1,670	7.70	12,875	"	65.00	832,000
PEPPERS, PIMIENTOS	1963	705	5.40	3,806	"	67.24	255,900
	1962	707	8.20	5,802	"	67.50	391,600
PINEAPPLE							
Total	1963	1,474	7.57	11,154	"	38.00	423,900
	1962	1,110	6.61	7,338	"	54.18	397,600
Fresh Market	1963			2,654	"	75.32	199,900
	1962			2,748	"	100.00	274,800
Processed	1963			8,500	"	26.35	224,000
	1962			4,590	"	26.75	122,800
SQUASH, WINTER	1963	160	10.00	1,600	"	20.00	32,000
	1962	205	10.00	2,050	"	20.00	41,000
SQUASH, SUMMER	1963	67	7.04	472	"	10.00	4,720
	1962				"		

VEGETABLE CROPS
ACREAGE, PRODUCTION AND VALUE 1962 - 1963

CROP	YEAR	HARVEST- ED ACREAGE	PER ACRE	PRODUCTION		VALUE	
				TOTAL	UNIT	PER UNIT	TOTAL
TOMATOES							
Total	1963	6,690	19.28	128,998	Ton	\$ 68.88	\$ 8,885,900
	1962	9,700	18.63	181,032	"	57.19	10,319,100
Fresh Market	1963			48,526	"	140.00	6,793,600
	1962			61,932	"	113.00	6,998,300
Processed	1963			80,472	"	26.00	2,092,300
	1962			119,100	"	27.88	3,320,800
TOMATOES, CHERRY	1963	47	10.00	470	"	194.04	91,200
	1962	48	14.20	681	"	112.00	76,400
MISC. VEGETABLES	1963	608	6.00	3,648	"	60.00	208,900
	1962	546	6.00	3,276	"	60.00	196,500
MUSHROOMS	1963			18,000	CWT	40.00	720,000
	1962			10,685	"	43.00	462,500
TOTAL	1963	41,513					\$27,561,440
	1962	42,642					33,051,800

CUT FLOWER PRODUCTION

CROP	YEAR	ACREAGE	TOTAL VALUE
CUT FLOWERS	1963	1,160	\$ 2,465,700
	1962	1,177	1,681,500
TOTAL	1963		\$ 2,465,700
	1962		1,681,500

FIELD CROPS
ACREAGE, PRODUCTION AND VALUE 1962 - 1963

CROP	YEAR	HARVEST- ED ACREAGE	PER ACRE	PRODUCTION		VALUE	
				TOTAL	UNIT	PER UNIT	TOTAL
BEANS							
Limas, Dry	1963	14,500	1.00	14,500	Ton	\$ 215.00	\$ 3,117,500
	1962	14,700	1.05	15,400	"	220.00	3,388,000
Seed Beans	1963	1,291	.93	1,195	"	278.32	332,600
	1962	1,286	1.15	1,482	"	273.75	405,700
HAY							
Alfalfa, Green	1963	801	30.00	24,040	"	5.00	120,200
	1962	728	30.00	21,840	"	5.50	120,000
Oats, Barley	1963	3,804	1.15	4,391	"	28.00	123,000
	1962	3,300	1.16	3,828	"	32.00	122,500
GRAIN							
	1963	3,067	.89	2,760	"	48.00	132,500
	1962	4,446	.85	3,828	"	49.00	185,000
SEED							
Flower	1963	147	66.89	9,833	Lbs.	3.07	30,200
	1962	101	239.00	24,100	"	3.22	81,200
Vegetable	1963	1,292	168.76	218,050	"	3.64	794,200
	1962	1,734	225.00	390,600	"	2.81	1,098,400
SUGAR BEETS							
	1963	1,882	27.05	50,905	Ton	12.92	657,800
	1962	345	22.52	7,770	"	10.81	78,500
TOTAL							
	1963	26,784					\$5,308,000
	1962	27,137					5,479,300

NURSERY STOCK PRODUCTION

NURSERY STOCK	YEAR	PRODUCTION		VALUE	
AVOCADOS, TREES	1963	12,749		\$	35,000
	1962	9,560			23,900
CITRUS, TREES	1963	167,901			418,800
	1962	161,800			404,600
CITRUS, SEED (Quarts)	1963	245			4,900
	1962	-			-
WALNUTS, TREES	1963	6,000			7,500
	1962	11,500			14,400
ORNAMENTALS, PLANTS	1963	61,083			65,100
	1962	70,000			107,500
VEGETABLES, PLANTS	1963	510,420			380,800
	1962	404,000			283,700
TOMATO PLANTS	1963	108,030			734,600
	1962	109,687			764,500
TOTAL	1963			\$	1,646,700
	1962				1,598,600

APIARY PRODUCTS

CROP	YEAR	PRODUCTION		VALUE	
		TOTAL	UNIT	PER UNIT	TOTAL
HONEY	1963	400,000	Lbs.	.15	\$ 60,000
	1962	2,000,000		.12	240,000
WAX	1963	60,000	"	40.00	24,000
	1962	160,000	"	43.00	64,000
TOTAL	1963				\$ 84,000
	1962				304,000

Number of apiaries 267

Number of colonies 16,431

LIVESTOCK AND POULTRY
PRODUCTION AND VALUE 1962 - 1963

CROP	YEAR	PRODUCTION		VALUE		
		TOTAL	UNIT	PER UNIT	TOTAL	
HOGS	1963	4,728	CWT	\$ 16.00	\$ 75,600	
	1962	14,876	"	20.50	304,600	
CATTLE	Range	1963	54,400	"	20.60	1,120,600
		1962	61,200	"	25.33	1,550,400
	Dairy	1963	16,112	"	16.50	265,800
		1962	16,038	"	21.25	342,000
	Feed Yard	1963	279,789	"	20.57	5,753,700
		1962	253,749	"	24.00	6,089,900
CHICKEN EGGS	1963	26,974,960	Dz.	.30	8,004,600	
	1962	17,073,500	"	.30	5,122,000	
CHICKEN MEAT	1963	1,825,880	Lbs.	.05	91,300	
	1962	1,321,816	"	.05	66,000	
TURKEYS	1963	1,540,000	"	.20	308,000	
	1962	2,460,000	"	.24	590,400	
TOTAL	1963				\$ 15,619,600	
	1962				14,065,300	

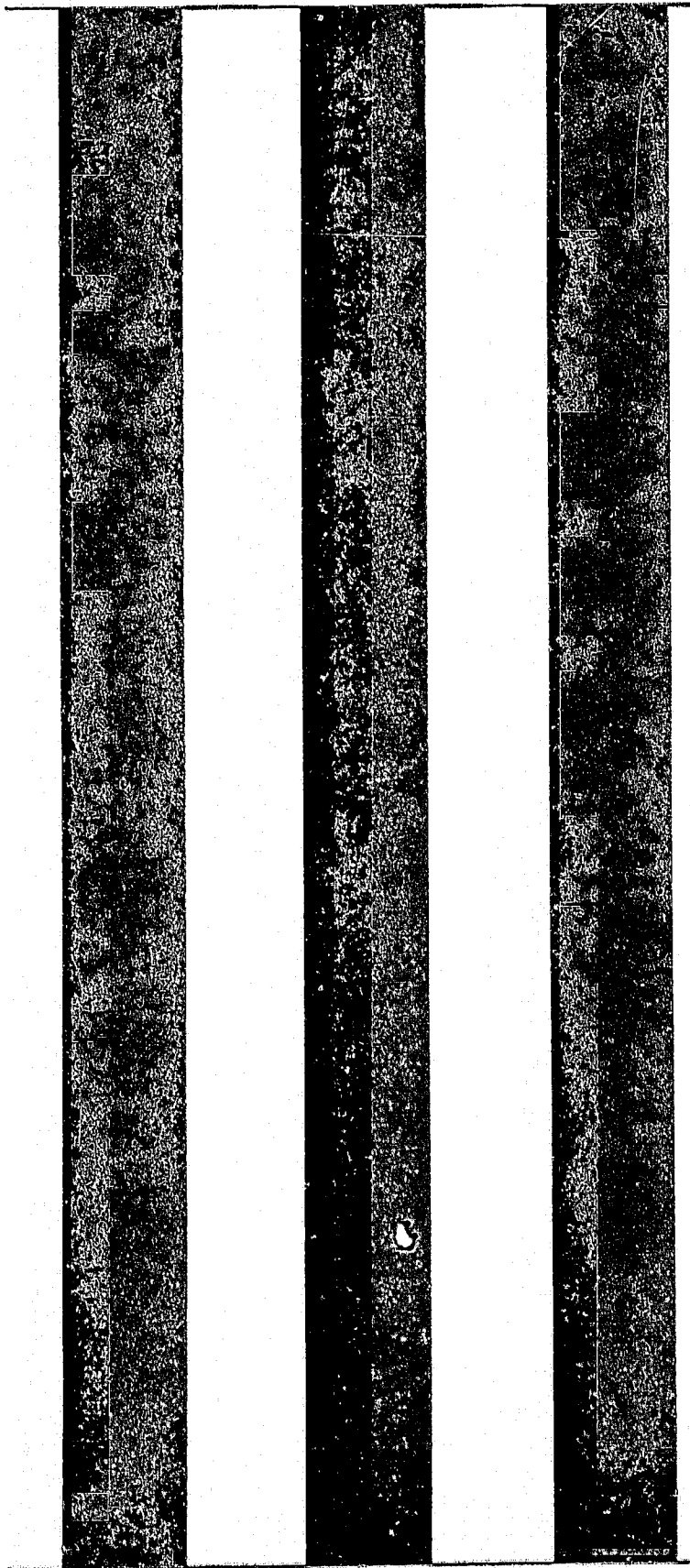
DAIRY PRODUCTS

PRODUCT	YEAR	PRODUCTION		VALUE	
		TOTAL	UNIT	PER UNIT	TOTAL
MARKET MILK	1963	693,000	CWT	\$ 5.23	\$ 3,624,000
	1962	640,000	"	5.31	3,398,000
MFG. MILK	1963	3,480	"	2.96	10,300
	1962	2,540	"	3.15	8,000
TOTAL	1963				\$ 3,634,300
	1962				3,406,000

AGRICULTURAL CROP REPORT RECAPITULATION

	YEAR	ACREAGE	VALUE
FRUIT & NUT CROPS	1963	49,550	\$ 74,693,500
	1962	47,298	60,713,500
VEGETABLE CROPS	1963	41,513	27,561,440
	1962	42,642	33,051,800
CUT FLOWERS	1963	1,160	2,465,700
	1962	1,177	1,681,500
FIELD CROPS	1963	26,784	5,308,000
	1962	27,131	5,479,300
NURSERY STOCK	1963		1,646,700
	1962		1,598,600
APIARY PRODUCTS	1963		84,000
	1962		304,000
LIVESTOCK & POULTRY	1963		15,619,600
	1962		14,065,300
DAIRY PRODUCTS	1963		3,634,300
	1962		3,406,000
<u>GRAND TOTAL CROP REPORT</u>	1963		\$ 131,013,240
	1962		120,292,000

1958 Crop Valuation	\$ 100,666,263
1959 Crop Valuation	102,821,348
1960 Crop Valuation	102,631,750
1961 Crop Valuation	110,643,140
1962 Crop Valuation	120,292,000
1963 Crop Valuation	131,013,240



1964

Publications

**VENTURA
COUNTY**

**ANNUAL
REPORT**

AND
CROP STATISTICS

1964

AGRICULTURAL
COMMISSIONER

ANNUAL REPORT
OF
C. J. BARRETT
AGRICULTURAL COMMISSIONER
COUNTY OF VENTURA
CALIFORNIA
FOR
YEAR ENDING DECEMBER 31, 1964

TO

VENTURA COUNTY BOARD OF SUPERVISORS

H. F. ROBINSON, District 1, Chairman
(Ventura, Montalvo & Saticoy)

JOHN C. MONTGOMERY, District 2
(Camarillo, Conejo Valley,
Moorpark & Simi)

FRED E. IRELAND, District 4
(Santa Paula, Fillmore & Piru)

J. K. MAC DONALD, District 3
(Ojai, Meiners Oaks, Oak View,
Casitas Springs, Foster Park &
Ventura Avenue)

EDWIN L. CARTY, District 5
(Oxnard, Port Hueneme, El Rio &
Nyeland Acres)

AND

CHARLES PAUL, DIRECTOR OF AGRICULTURE
STATE OF CALIFORNIA

I N M E M O R I A M
H A R R Y E. B R O N S O N

1908 - 1964

This issue of our annual report is dedicated to the memory of Harry E. Bronson, Deputy Agricultural Commissioner. Mr. Bronson was a member of our staff from January 1, 1950 to May 7, 1964.

Mr. Bronson was a dedicated public servant who loved the work and was highly successful.

His success was measured by the countless friends he made during his years of service.

DEPARTMENT PERSONNEL

COMMISSIONER

G. J. BARRETT

Deputy Commissioner
Deputy Commissioner
Deputy Commissioner
Deputy Commissioner

John C. Allee
Harry E. Bronson
Glyde W. May
John L. Schall

Supervising Inspector - Nursery, Seed & Plant Disease
Supervising Inspector - Standardization

Verner E. Holmer
Paul B. Travis

Vacuum Fumigation

Murl Boren

Sr. Inspector, Ventura

Donald Anderson

Sr. Inspector, Oxnard - Quarantine
Sr. Inspector, Oxnard - Egg & Poultry Standardization
Inspector, Oxnard - Standardization
Inspector, Oxnard - Standardization
Inspector, Oxnard - Standardization

Richard Chase
Kenneth Weiss
Gene Fidel
Donald Hare
George Peters

Sr. Inspector, Moorpark-Simi
Inspector, Moorpark-Simi - Weed & Rodent Control

I. L. Clements
Bruce Burns

Sr. Inspector, Ojai
Inspector, Ojai

(Part-time)

Marvin Paregien
Gerald Ashton

Sr. Inspector, Fillmore-Bardsdale

Harold Hawkins

Sr. Inspector, Camarillo-Somis-Thousand Oaks
Inspector, Camarillo-Somis-Thousand Oaks

W. Mark Jones
Richard Watts

Sr. Inspector, Santa Paula
Inspector, Santa Paula - Weed & Rodent & Plague Control

Ed R. Urban
Floyd Ward

Sr. Inspector, Apiary

Glenn M. Smith

Agricultural Field Assistant
Agricultural Field Assistant
Agricultural Field Assistant
Agricultural Field Assistant
Agricultural Field Assistant
Agricultural Field Assistant
Agricultural Field Assistant

Kenneth Clinton
James Fullmer
Glen Hackworth
Carroll Hannah
Donald Janssen
Dewey Runkle
Larry Stocker
Carl Whittaker, Jr.

Account Clerk

Shirley Carter

Record Clerk
Part-time Record Clerk

Elizabeth Smith
Ramona Chavez

ANNUAL REPORT TO THE BOARD OF SUPERVISORS
COUNTY OF VENTURA

AND

THE DIRECTOR
STATE DEPARTMENT OF AGRICULTURE

1964

We submit a short resume of the activities of the Agricultural Commissioner's office for the calendar year 1964.

The office of the Commissioner is charged with the enforcement of State and County regulations for the promotion and protection of the agricultural interests and for the protection of the public, in general.

Knowing that most people are too busy to read long reports and papers, we submit a condensed version of the activities of the Agricultural Commissioner's office for the year 1964.

Our office, like all others, is feeling the effect of increased population growth and the speculative practices. There has been a reduction in the agricultural acreage of the County, but the problems have multiplied.

We wish to thank those with whom we work for their understanding and cooperation given to make our task somewhat easier.

QUARANTINE

Quarantine involves the holding of plant material being moved from one area to another until an inspection has been made and the material found free of serious pests and then released for planting.

This is our first line of defense against the spread of serious pests, both from other states or countries and from areas within the State of California.

The following is a summary of the work done in Quarantine during the year 1964:

Interstate Quarantine

No. of Shipments Inspected	2,734
No. of Shipments Released	2,714
No. of Shipments Rejected	20
No. of Plants Inspected	1,266,251
No. of Plants Released	1,266,167
No. of Plants Rejected	84
** No. of Shipments of Grain Inspected	1,013
No. of Tons of Grain Inspected	63,974
No. of Tons of Grain Released	63,919
No. of Tons of Grain Rejected	55

** Cars designated to approved mills for treatment are not included in the number of inspections rejected.

Intrastate Quarantine

No. of Shipments Inspected	12,383
No. of Shipments Rejected	141
No. of Shipments Treated & Released	112
No. of Plants Inspected	11,893,672
No. of Plants Rejected	18,183
No. of Plants Treated & Released	17,957
No. of Shipments of Grain Inspected	154
No. of Shipments of Grain Released	154

Quarantine - Total Hours Used 9,908

SHIP INSPECTION

No. of Ships Inspected	34
------------------------	----

Ship Inspection - Total Hours Used 206

EXPORT CERTIFICATION

(European and Asian)

No. of Shipments Certified	3,771
No. of Packages Certified (Seed, Fruit, Beans & Vegetables)	3,556,244

Export Certification - Total Hours Used 1,198

TREATMENTS

Ventura County is well equipped to treat shipments of material infested with insect pests. The following is a summary of the treatment work done during the year 1964:

Vacuum Fumigation - HCN

Citrus Trees	319 lots	63,477 trees
Fruit	5 lots	83 boxes
Seed	1 lot	12 bags
Used Bags	1 lot	14 bales

Vacuum Fumigation - Methyl Bromide

Citrus Trees	3 lots	18 trees
Citrus Fruits	1 lot	46 boxes

Atmospheric Fumigation

Citrus Trees	1 lot	85 trees
--------------	-------	----------

Hot Water Treatments

Avocado Seed	14,600 Seeds
Citrus Seed	181 Quarts

Treatments - Total Hours Used 2,608

STANDARDIZATION

Standardization inspections are made to insure that the preparation and sale of products conform to minimum State requirements of quality, packaging, and labeling.

During the year 1964 the following work was done on Standardization:

Fruits, Nuts and Vegetables

No. of Inspections	16,189
No. of Containers Inspected	5,169,024
No. of Containers Rejected	18,114
No. of Shipments Certified	8,719
No. of Containers Certified	3,095,016
No. of Violations Issued	126

Eggs

No. of Lots Inspected	1,698
No. of Dozens Inspected	1,142,025
No. of Dozens Rejected	39,106
No. of Violations Issued	87
No. of Court Cases	1

Poultry Meat Certification

No. of Lots Inspected	897
No. of Packages & Carcasses Inspected	38,713
No. of Packages & Carcasses Rejected	124
No. of Non-Compliance Notices Issued	5

Honey

No. of Packages Inspected	6,009 Pounds
Standardization - Total Hours Used	9,105

SEED INSPECTION

The following is a summary of the Seed Inspection work accomplished in Ventura County during the year 1964:

No. of Lots of Seed Inspected	1,761
No. of Lots of Seed in Violation	47
No. of Lots of Seed Seized & Destroyed	28
No. of Stop-Sale Orders Issued	19
No. of Official Samples Drawn	7
No. of Grade Samples Drawn	9
No. of Quarantine Samples Drawn	8
No. of Lots of Seed Screenings Held	16

California Crop Improvement Program

Threshers & Warehouse Inspections	7
No. of Certification Samples Drawn	3

Seed Inspection - Total Hours Used	1,777
------------------------------------	-------

APIARY INSPECTION

Inspections are made in apiaries to detect the presence of serious diseases detrimental to bees. American Foulbrood is such a disease.

The following is a summary of the work done in Apiary Inspection:

	<u>No. of Apiaries</u>	<u>No. of Colonies</u>
Registered	270	20,427
Inspected	367	16,224
Infected (American Foulbrood)	81	272
Infected (European Foulbrood)	26	206
Burned (American Foulbrood)	71	206
Wax Salvage (American Foulbrood)	10	66
Percentage of American Foulbrood Infection		1.6%
Apiary Inspection - Total Hours Used		1,844

YARD SURVEY

Each year the Agricultural Commissioner's office conducts a general pest survey throughout certain areas of the County to determine the presence of serious pests.

We cooperate with the citrus industry in inspecting for the presence of certain serious citrus pests.

The following is a summary of the inspections made during the year 1964:

Yards Inspected	3,018
Yards Infested - Red Scale	57
Yards Infested - Dictyospermum Scale	2
Treatment - Sprayed	58
Treatment - Pulled	1
Yard Survey - Total Hours Used	2,779

APIARY INSPECTION

Inspections are made in apiaries to detect the presence of serious diseases detrimental to bees. American Foulbrood is such a disease.

The following is a summary of the work done in Apiary Inspection:

	<u>No. of Apiaries</u>	<u>No. of Colonies</u>
Registered	270	20,427
Inspected	367	16,224
Infected (American Foulbrood)	81	272
Infected (European Foulbrood)	26	206
Burned (American Foulbrood)	71	206
Wax Salvage (American Foulbrood)	10	66
Percentage of American Foulbrood Infection		1.6%
Apiary Inspection - Total Hours Used		1,844

YARD SURVEY

Each year the Agricultural Commissioner's office conducts a general pest survey throughout certain areas of the County to determine the presence of serious pests.

We cooperate with the citrus industry in inspecting for the presence of certain serious citrus pests.

The following is a summary of the inspections made during the year 1964:

Yards Inspected	3,018
Yards Infested - Red Scale	57
Yards Infested - Dictyospermum Scale	2
Treatment - Sprayed	58
Treatment - Pulled	1
Yard Survey - Total Hours Used	2,779

BIOLOGICAL CONTROL OF INSECTS

Ventura County is the leading county of the State in biological control of serious insect pests. The work is primarily on those insects that will respond to control by biological means. The beneficial insects are reared by one privately-owned insectary and by four citrus association insectaries.

The following are the beneficial insects reared in Ventura County during the year 1964:

<u>Parasite</u>	<u>Host</u>	<u>Number</u>
Trichogramma sps	Lepidoptera sp	799,584,000
Cryptolaemus sps	Mealybug	41,814,000
Aphytis melinus	Red Scale	15,255,000
Metaphycus sps	Black Scale	11,639,000
Pauridea & Leptomastix sps	Mealybug	390,000

NURSERY INSPECTION

The following is a summary of Nursery Inspections made in Ventura County for the year 1964:

No. of Nurseries	272
No. of Growing Grounds	73
No. of Inspections for Plant Pests	612
No. of Partial or Re-Inspections	174
No. of Nurseries with "A" Pests found	0
No. of Nurseries with "B" Pests ("B" Pests are those of a serious nature that require eradication in Ventura County.)	15
No. of Nurseries with "C" Pests	60
No. of Notices of Non-Compliance Issued	75

The following surveys were conducted in Ventura County nurseries during 1964:

Poinsettia Crinkleleaf	Disease of Poinsettia
Hypsoperine granminis	A turf grass nematode
Ferrisea virgata	Striped Mealy Bug - "A" Pest
Burrowing Nematode	"A" Pest
Root Knot Nematode	224 acres sampled
Celery Mosaic	For Host-Free period
Weed Surveys (Primary & Secondary)	33 acres inspected

Nursery Inspection - Total Hours Used 3,119

ORCHARD INSPECTIONS

One of the important phases of our work is to keep aware of pest conditions in our orchards and fields. To assure current knowledge of pest conditions, we make inspections to ascertain what, if any, treatment is needed, and to make recommendations as to the materials to be used and types of treatment to be made.

The following are some of the more important pests found in inspections:

CITRUS:	Black Scale, Citrus Asphis, Citrus Mites, Mealybugs, Orange Tortrix, Citrus Thrips, Red Scale, Yellow Scale, Soft Brown Scale and Brown Rot
AVOCADOS:	Brown Mite
WALNUTS:	Husk Fly, Codling Moth, Walnut Aphis, and European Red Mites
FIELD CROPS & VEGETABLES:	Spider Mites, Aphis, Loopers, Thrips, <u>Lygus</u> spp., Mildew, Smog injury, and Rust

Orchard Inspection - Total Hours Used 1,104

SEED CERTIFICATION

Certain countries of the world, as well as several of the States of the Union, require a certificate proclaiming the freedom from certain seed-borne diseases as provisions for entry. To assist the seed growers of the County in being able to properly claim freedom, a self-supporting program of field inspection was entered into during the year. The Commissioner's office makes the survey, as approved by the Bureau of Plant Pathology, State Department of Agriculture. This program is paid for by the seed growers.

During the year 1964 the following work was done:

Tomato Seed:

633.68 acres (52 varieties) were inspected.

439.38 acres (49 varieties) were approved for certification.

194.30 acres (17 varieties) were declared ineligible for certification due to failure to follow the prescribed extraction process.

No Bacterial Canker (*Corynebacterium michiganense*) was discovered in the County.

Three complete field inspections of each acre were necessary to qualify the field for certification.

Pepper Seed:

751.29 acres (31 varieties) were inspected during the growing season.

No seed-borne diseases were found; thus, all fields and varieties were approved for certification.

Eggplant Seed:

4.75 acres (1 variety) were inspected.

No seed-borne disease was found and the entire acreage was approved for certification.

- Total Hours spent on
Tomato, Pepper &
Eggplant Seed Inspection
and Certification 1,368

PLANT DISEASE INSPECTION

The inspection for plant diseases and the answering of requests for diagnosis are important phases of our work. Inspections include fields, orchards, and residential yards.

Following is a summary of the plant disease inspections made during the year 1964:

<u>Host</u>	<u>No.</u>	<u>Host</u>	<u>No.</u>
Avocados	37	Ornamental Shrubs & Trees	612
Citrus	185	Lawns	116
Deciduous Fruits & Nuts	111	Dichondra Lawns	13
Grapes & Caneberries	4	Strawberries	4
Vegetable Crops	35	Loquats	4
Melon, Squash & Cucumbers	6	Ivy Plants	8
Flower Crops, including bulbs	45	Olives	5
Field Crops	14	Miscellaneous Plants	12

Total Number of Inspections Made - 1,211

Phytophthora cinnamomi (cinnamon fungus of avocados) was found on three new locations. This brings the total number of infections to 24 found on 3,175 acres.

Plant Disease Inspection - Total Hours Used 980

PEST CONTROL SUPERVISION

Many of the insecticides are under a permit system for use, and sometimes it is necessary to make inspections before permits can be used.

The permit system is intended to insure the safe use of all pesticides, and to prevent injury to crops, animals, and humans.

No. of Inspections - 1,327 No. of Hours Spent - 1,893

ACRES TREATED BY AGRICULTURAL PEST CONTROL OPERATORS

	By Aircraft			By Ground Equipment		
	<u>Sprays</u>	<u>Dusts</u>	<u>Total</u>	<u>Sprays</u>	<u>Dusts</u>	<u>Total</u>
<u>Field Crops:</u>						
Grains	1,000		1,000			
Beans	6,056	2,308	8,364	3,279	12,070	15,349
Corn		75	75	38		38
Other Field Crops	<u>195</u>	<u>107</u>	<u>302</u>	<u>861</u>	<u>494</u>	<u>1,355</u>
TOTAL FIELD CROPS	7,251	2,490	9,741	4,178	12,564	16,742
<u>Vegetables:</u>						
Tomatoes	672	5,773	6,445	2,235	7,419	9,654
Potatoes	48		48	32		32
Lettuce	1,619	587	2,206	3,146	10,909	13,236
Other Vegetables	<u>1,490</u>	<u>3,434</u>	<u>4,924</u>	<u>8,714</u>	<u>12,896</u>	<u>21,610</u>
TOTAL VEGETABLES	3,829	9,794	13,623	14,127	30,405	44,532
<u>Other Crops:</u>						
Deciduous Fruits				3		3
Nuts	384		384	5,849		5,849
Berries		172	172	545	1,795	2,340
Flowers, Ornamentals	271	318	589	542	946	1,488
Avocados & Citrus	1,669		1,669	71,709		71,709
Miscellaneous Crops	<u>2,694</u>		<u>2,694</u>	<u>1,362</u>		<u>1,362</u>
TOTAL OTHER CROPS	5,018	490	5,508	80,010	2,741	82,751
TOTAL - ALL CROPS	16,098	12,774	28,872	98,315	45,710	144,025
FUMIGATION - SOIL AND TREES						<u>18,693</u>
						152,718

Total Acres Treated by Pest Control Operators - 180,803

Estimated Acres Treated by Owners - 9,040

Total 189,843

RODENT CONTROL

Rodent control work is conducted by the Commissioner's office to assist in decreasing the economic damage done by those pests, and to lessen the possibility of accidental injury due to the presence of Plague in the County. Ground squirrels and rats are suspected carriers of this disease and measures are taken to eliminate these rodents, especially around the areas of dense population. All of Ventura County, with the exception of one area, is designated a Plague area.

The materials used during 1964 for Plague Control are listed below:

<u>Material</u>	<u>Amount</u>
Strychnine-treated grain	1,590 lbs.
Warfarin-treated grain	4,773 lbs.
Zinc Phosphide-treated bait	208 lbs.
1080-treated bait	13,601 lbs.
Methyl Bromide	1,546 lbs.
Carbon Bisulfide	81 gals.
Total number of acres treated -	297,851
Total Hours Used -	10,059

Miscellaneous Rodent Control:

Control of gophers is performed under contract with the California State Division of Highways and also in certain areas where gophers are a menace to County road maintenance.

Bird control, when excessive damage to agricultural crops is encountered, is conducted under the supervision of this Department.

The following is a summary of this work done by the Commissioner's office during 1964:

Gophers:

<u>Materials</u>	<u>Amount</u>
1080-treated bait	2,250 lbs.
Strychnine-treated bait--3%	1,488 lbs.
Strychnine-treated bait	3,899 lbs.
Methyl Bromide	1,845 lbs.
Total number of acres treated -	22,595

Jack Rabbits:

<u>Materials</u>	<u>Amount</u>
Strychnine-treated bait	2,250 lbs.
Total number of acres treated -	6,393

Birds:

The following species of birds caused extensive damage to crops:

Blackbirds	English Sparrows
Crowned Sparrows	Horned Larks
Linnets	

A total of 1,275 pounds of strychnine-treated bait was used to treat 84 properties, totalling 5,064 acres.

Total Hours Used - Miscellaneous Rodent Control - 2,421

WEED CONTROL

The following is a summarization of the weed control work done by the Agricultural Commissioner's office during 1964:

<u>Weeds Treated</u>	<u>Size of Infestation</u>
Puncture Vine	807,120 square feet
Medusa Head Grass	885,630 square feet
Russian Knapweed	152,250 square feet
Milkweed	110,250 square feet
Hoary Cress	75,000 square feet
Italian Thistle	661,500 square feet
White Horse Nettle	487,250 square feet

A program was carried out along all County roads and streets to assist in reducing the cost of roadside maintenance by mechanical means.

The following listed Weed Control materials were used in 1964:

<u>Material</u>	<u>Amount</u>
Amitrol T	6.0 Gals.
Atrazine	3,136.0 Lbs.
Dalapon	256.50 Lbs.
Dinitro	2.0 Gals.
Fenac	6.0 Lbs.
Fenac	11.0 Gals.
Simazin	111.0 Lbs.
Trysben	710.0 Gals.
Weed Oil	5,301.0 Gals.
Weedone	22.0 Gals.
Weedone	2.50 Lbs.
X-77	3.25 Gals.
2,4,5-T	1.0 Qt.

17.50 acres of roadside and 3,179,000 square feet of ground area were treated.

Weed Control - Total Hours Used - 4,224

VENTURA COUNTY
DEPARTMENT OF AGRICULTURE

Agricultural Building
Santa Barbara and Eighth Streets
Santa Paula, California

To the Director of the State Department of Agriculture:

Pursuant to Section 65.5 of the Agricultural Code, we submit the crop production, crop value and acreage report for the calendar year 1964.

The total values shown in this report are the highest on record for Ventura County, and exceed the all-time high of 1963 by 10 million dollars.

This increase can be attributed to several factors. The double cropping of our land produces two crops a year on many of our farms. This, together with increased production due to more refined and technical methods, creates high production records per acre.

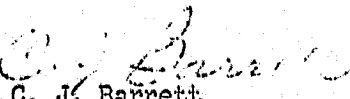
It is important to recognize that 1964 was the highest producing year of Lemons in the history of the County. The total production was 16,091,020 field boxes.

Valencia orange prices were increased over those of the past few years.

Credit is due to the growers of the County, who, in spite of rising prices, increased costs of equipment, pest control materials, and increased taxes, continue to make this one of the richest and highest producing counties of the Nation.

The values of this report are based entirely on the F.O.B. value of the crops, and in no way indicate net returns or profits to the growers. These values include all the expenses necessary to grow, prepare, and package the crops for sale.

We are indebted to many individuals, companies, firms, and corporations who aided in compiling this report. To them, we extend our thanks and appreciation for their assistance and cooperation.


C. J. Barrett
Agricultural Commissioner

COUNTY OF VENTURA
DEPARTMENT OF AGRICULTURE

FINANCIAL STATEMENT
FISCAL YEAR 1963-1964

SALARIES AND WAGES

Commissioner	\$ 13,464.00	
Deputy Commissioners (3)	23,869.46	
Inspectors	141,017.14	
Office Help	11,185.15	
Extra Help	25,948.41	\$ 215,484.16

MAINTENANCE AND OPERATION

30,887.71

CAPITAL OUTLAY

609.48 \$ 246,981.35

REVENUE

41,240.80

CLASSIFICATION OF ESTIMATED EXPENDITURES BY FUNCTION:

Plant Quarantine	\$ 39,029.12
Standardization	37,960.00
Insect Detection and Survey	4,929.24
Plant Disease Detection and Survey	6,147.58
Eradication and Control Programs	13,661.17
Field and Orchard	12,871.16
Nursery Inspection	10,293.00
Seed Inspection	5,266.22
Vertebrate Control (County Expense)	12,154.07
Plague Suppression (County Expense)	26,781.40
Weed Control (County Expense)	15,152.38
Apiary Inspection	8,234.65
Injurious Materials & Injurious Herbicides and Pest Control Operator Enforcement	7,301.35
Crop Statistics	5,248.80
Other Items (Miscellaneous)	41,951.21

\$ 246,981.35

ACREAGE OF AGRICULTURAL CROPS FOR 1964

The following are the acres devoted to major agricultural crops in Ventura County. The non-bearing acres are those on which trees are five years of age or less.

CROP	BEARING ACRES	NON-BEARING ACRES	TOTAL ACRES
Almonds	38	0	38
Apples	43	2	45
Apricots	164	0	164
Avocados	2,649	263	2,912
Carob	0	8	8
Cherimoya	0.5	0	0.5
Citron	4.7	0	4.7
Grapefruit	660	116	776
Lemons	21,876	1,057	22,933
Macadamia Nuts	0	4.9	4.9
Olives	21	0	21
Orange, Navel	1,941	138	2,079
Orange, Valencia	15,687	2,856	18,543
Peaches	21	4	25
Pears	3	0	3
Strawberries	489	0	489
Tangerines	23	18	41
Walnuts	4,961	165	5,126
Beans, Dry	10,000	0	10,000
Beans, Seed	1,276	0	1,276
Cut Flowers	1,388	0	1,388
Hay & Grain	7,557	0	7,557
Nursery Stock	237	0	237
Seed	1,667	0	1,667
Sugar Beets	4,421	0	4,421
Vegetables	42,021	0	42,021
Total	<u>117,148.2</u>	<u>4,631.9</u>	<u>121,780.1</u>

FRUIT AND NUT CROPS
ACREAGE, PRODUCTION AND VALUES 1963-1964

CROP	YEAR	BEARING ACREAGE	PER ACRE	PRODUCTION TOTAL UNIT	PER UNIT	TOTAL
APPLES	1964	43	2.38	102 Ton	\$117.65	\$ 12,000
	1963	43	8.22	353 "	100.00	35,300
AVOCADOS	1964	2,649	2.75	7,296 "	258.00	1,882,400
	1963	2,574	1.81	4,654 "	267.00	1,242,700
GRAPEFRUIT						
Total	1964	660	14.80	9,768 "	98.17	958,900
	1963	482	16.47	7,941 "	112.05	889,800
Fresh Market	1964			5,855 "	145.74	853,300
	1963			5,081 "	168.37	855,500
Processed	1964			3,913 "	26.99	105,600
	1963			2,860 "	12.00	34,300
LEMONS						
Total	1964	21,876	18.58	402,278 "	96.72	38,910,500
	1963	22,895	12.61	288,616 "	133.76	38,606,100
Fresh Market	1964			218,418 "	135.99	29,702,500
	1963			202,925 "	160.40	32,549,100
Processed	1964			183,860 "	50.08	9,208,000
	1963			85,691 "	70.68	6,057,000
ORANGES, NAVEL						
Total	1964	1,941	12.56	24,189 "	129.75	3,138,600
	1963	2,039	10.09	20,584 "	205.53	4,230,700
Fresh Market	1964			18,391 "	155.72	2,864,000
	1963			17,750 "	231.56	4,110,200
Processed	1964			5,798 "	47.36	274,600
	1963			2,834 "	42.51	120,500
ORANGES, VALENCIA						
Total	1964	15,687	12.11	189,996 "	157.86	29,992,200
	1963	15,436	12.78	197,310 "	135.21	26,679,300
Fresh Market	1964			120,273 "	193.50	23,273,700
	1963			129,611 "	167.62	21,725,100
Processed	1964			69,723 "	96.36	6,718,500
	1963			67,699 "	73.18	4,954,200

FRUIT AND NUT CROPS
ACREAGE, PRODUCTION AND VALUES 1963-1964

CROP	YEAR	BEARING ACREAGE	PER ACRE	PRODUCTION TOTAL UNIT	PER UNIT	TOTAL
STRAWBERRIES						
Total	1964	489	17.04	8,330	\$489.30	\$ 4,076,000
	1963	480	11.50	5,520	411.25	2,270,100
Fresh Market	1964			7,128	528.00	3,763,500
	1963			4,032	480.00	1,935,300
Processed	1964			1,202	260.00	312,500
	1963			1,488	225.00	334,800
TANGERINES	1964	23	2.90	67	240.00	16,000
	1963	21	2.70	57	261.40	14,900
WALNUTS	1964	4,961	.55	2,708	460.00	1,245,600
	1963	5,581	.32	1,811	400.11	724,600
FRUIT AND NUT CROPS -						
TOTALS						
	1964	48,329				\$80,232,200
	1963	49,550				74,693,500

DAIRY PRODUCTS
1963-1964

PRODUCT	YEAR	PRODUCTION		VALUE	
		TOTAL	UNIT	PER UNIT	TOTAL
Market Milk	1964	715,000	Cwt.	\$ 5.28	\$3,777,000
	1963	691,000	"	5.23	3,624,000
Manufacturing Milk	1964	1,260	Cwt.	3.89	4,900
	1963	3,050	"	3.28	10,300
DAIRY PRODUCTS -					
TOTALS					
	1964				\$3,781,900
	1963				3,634,300

VEGETABLE CROPS
ACREAGE, PRODUCTION AND VALUES 1963-1964

CROP	YEAR	HARVESTED ACREAGE	PER ACRE	PRODUCTION		VALUE	
				TOTAL	UNIT	PER UNIT	TOTAL
BEANS, GREEN							
Processed	1964	10,500	2.00	21,000	Ton	\$173.00	\$ 3,633,000
	1963	11,200	1.91	21,400	"	174.00	3,724,000
BEANS,							
Fresh Market	1964	138	4.30	597	"	166.33	99,300
	1963	159	5.22	830	"	180.60	149,900
BEETS, RED	1964	30	8.50	255	"	49.02	12,500
	1963	47	9.21	433	"	49.69	21,520
BROCCOLI, Processed	1964	1,693	2.62	4,442	"	148.10	657,800
	1963	1,509	2.50	3,773	"	165.00	622,500
CABBAGE, RED	1964	96	14.00	1,344	"	45.50	61,150
	1963	139	11.00	1,529	"	35.58	54,400
CABBAGE, GREEN	1964	2,254	13.00	29,302	"	47.00	1,377,200
	1963	2,122	11.00	23,342	"	35.00	817,000
CARROTS	1964	322	13.00	4,186	"	55.00	230,200
	1963	313	15.61	4,889	"	40.00	195,500
CAULIFLOWER	1964	376	4.35	1,637	"	112.00	183,300
	1963	501	4.87	2,442	"	119.00	290,600
CELERY	1964	2,597	29.45	76,481	"	80.00	6,118,500
	1963	2,490	30.00	74,700	"	56.00	4,183,200
CHARD	1964	16	8.12	130	"	50.00	6,500
	1963	62	12.00	744	"	50.00	37,200
CORN, SWEET	1964	750	3.50	2,625	"	70.00	183,700
	1963	138	3.50	483	"	70.00	33,800
CUCUMBERS							
Total	1964	485	10.81	5,243	"	82.35	431,800
	1963	368	11.36	4,182	"	91.39	382,200
Fresh Market	1964			4,493	"	87.00	390,900
	1963			3,522	"	98.00	345,200
Pickling	1964			670	"	61.00	40,900
	1963			660	"	56.00	37,000

VEGETABLE CROPS
ACREAGE, PRODUCTION AND VALUES 1963-1964

CROP	YEAR	HARVESTED ACREAGE	PER ACRE	PRODUCTION		VALUE	
				TOTAL	UNIT	PER UNIT	TOTAL
LETTUCE							
Head	1964	4,721	9.71	45,888	Ton	\$ 60.00	\$ 2,753,300
	1963	5,445	10.07	54,851	"	56.52	3,100,200
Leaf	1964	815	10.00	8,150	"	62.14	506,400
	1963	486	10.20	4,957	"	66.00	327,200
Romaine	1964	2,187	13.67	29,865	"	65.63	1,960,000
	1963	1,815	11.20	20,328	"	62.00	1,260,500
ONIONS, GREEN	1964	10	8.25	82	"	66.66	5,500
	1963	205	13.34	2,735	"	56.82	155,400
PARSLEY	1964	200	32.50	6,500	"	34.62	225,000
	1963	240	28.00	6,720	"	39.00	262,000
PEAS, Processed	1964	2,420	1.62	3,920	"	78.10	306,000
	1963	2,100	1.41	2,961	"	83.01	245,000
PEPPERS, BELL							
Total	1964	441	7.50	3,307	"	90.05	297,800
	1963	794	7.47,	5,937	"	74.23	440,700
Fresh Market	1964			955	"	137.00	130,800
	1963			2,112	"	100.00	211,200
Processed	1964			2,332	"	55.00	128,200
	1963			3,825	"	60.00	229,500
PEPPERS, GREEN CHILI	1964	1,948	6.00	11,688	"	57.43	671,200
	1963	1,629	6.00	9,774	"	65.00	635,300
PEPPERS, PIMIENTO	1964	918	6.37	5,848	"	67.50	394,700
	1963	705	5.40	3,806	"	67.24	255,900
SPINACH							
Total	1964	1,400	8.25	11,560	"	32.78	378,900
	1963	1,474	7.57	11,154	"	38.00	423,900
Fresh Market	1964			2,660	"	57.12	151,900
	1963			2,654	"	75.32	199,900
Processed	1964			8,900	"	25.50	227,000
	1963			8,500	"	26.35	224,000
SQUASH, WINTER	1964	113	10.00	1,130	"	20.00	22,600
	1963	160	10.00	1,600	"	20.00	32,000
SQUASH, SUMMER	1964	10	7.00	70	"	100.00	7,000
	1963	67	7.04	472	"	100.00	47,200

VEGETABLE CROPS
ACREAGE, PRODUCTION AND VALUES 1963-1964

CROP	YEAR	HARVESTED ACREAGE	PER ACRE	PRODUCTION		VALUE	
				TOTAL	UNIT	PER UNIT	TOTAL
TOMATOES							
Total	1964	6,954	19.98	139,080	Ton	\$ 62.50	\$ 8,691,200
	1963	6,690	19.28	128,998	"	68.88	8,885,900
Fresh Market	1964			43,771	"	137.70	6,027,900
	1963			48,526	"	140.00	6,793,600
Processed	1964			95,255	"	27.96	2,663,300
	1963			80,472	"	26.00	2,092,300
TOMATOES, CHERRY	1964	37	9.00	333	"	190.00	63,300
	1963	47	10.00	470	"	194.04	91,200
MISC. VEGETABLES	1964	590	6.00	3,540	"	65.00	230,100
	1963	608	6.00	3,648	"	60.00	208,900
MUSHROOMS	1964			18,375	CWT.	44.85	824,200
	1963			18,000	"	40.00	720,000
VEGETABLE CROPS -							
TOTALS							
	1964	42,021					\$30,332,150
	1963	41,513					27,561,440

APIARY PRODUCTS
1963-1964

PRODUCTS	YEAR	PRODUCTION		VALUE	
		TOTAL	UNIT	PER UNIT	TOTAL
HONEY	1964	1,800,000	Lbs.	.125	\$225,000
	1963	400,000	"	.15	60,000
WAX	1964	86,000	Lbs.	.40	34,400
	1963	60,000	"	.40	24,000
APIARY PRODUCTS -					
TOTALS					
	1964				\$259,400
	1963				84,000

Number of Apiaries - 270

Number of Colonies - 20,000

FIELD CROPS
ACREAGE, PRODUCTION AND VALUES - 1963-1964

CROP	YEAR	HARVESTED ACREAGE	PER ACRE	PRODUCTION		VALUE	
				TOTAL	UNIT	PER UNIT	TOTAL
BEANS							
Limas, Dry	1964	10,000	.87	8,750	Ton	\$260.00	\$2,275,000
	1963	14,500	1.00	14,500	"	215.00	3,117,500
Seed Beans	1964	1,276	1.08	1,372	"	309.16	424,200
	1963	1,291	.93	1,195	"	278.32	332,600
HAY							
Alfalfa, Green	1964	660	30.00	18,000	"	5.00	90,000
	1963	801	30.00	24,040	"	5.00	120,200
Oats, Barley	1964	3,687	.94	3,465	"	28.00	97,000
	1963	3,804	1.15	4,391	"	28.00	123,000
GRAIN							
	1964	3,870	.70	2,209	"	58.85	130,000
	1963	3,067	.89	2,760	"	48.00	132,500
SEED							
Flower	1964	177	150.00	26,550	Lbs.	2.68	71,200
	1963	147	66.89	9,833	"	3.07	30,200
Vegetable	1964	1,490	224.50	334,600	"	2.87	961,800
	1963	1,292	168.76	218,050	"	3.64	794,200
SUGAR BEETS							
	1964	4,421	25.90	114,577	Ton	13.83	1,584,600
	1963	1,882	27.05	50,905	"	12.92	657,800
FIELD CROPS -							
TOTAL							
	1964	25,521					\$5,633,800
	1963	26,784					5,308,000

NURSERY STOCK PRODUCTION
1963-1964

VARIETY	YEAR	PRODUCTION	VALUE
AVOCADO TREES	1964	7,640	\$ 21,000
	1963	12,749	35,000
CITRUS TREES	1964	119,720	239,400
	1963	167,901	418,800
CITRUS SEEDS (Quarts)	1964	181	3,600
	1963	245	4,900
WALNUT TREES	1964	12,424	14,500
	1963	6,000	7,500
ORNAMENTAL PLANTS	1964	1,656,034	559,300
	1963	61,083	65,100
VEGETABLE PLANTS -			
FLATS	1964	515,000	334,700
	1963	510,420	380,800
TOMATO PLANTS			
FIELD GROWN	1964	95,000,000	653,900
	1963	108,000,000	734,600
<hr/>			
NURSERY STOCK PRODUCTION			
TOTALS	1964		\$1,826,400
	1963		1,646,700

CUT FLOWER PRODUCTION
1963 - 1964

	YEAR	ACREAGE	TOTAL VALUE
CUT FLOWERS	1964	1,388	\$2,460,800
	1963	1,160	2,465,700

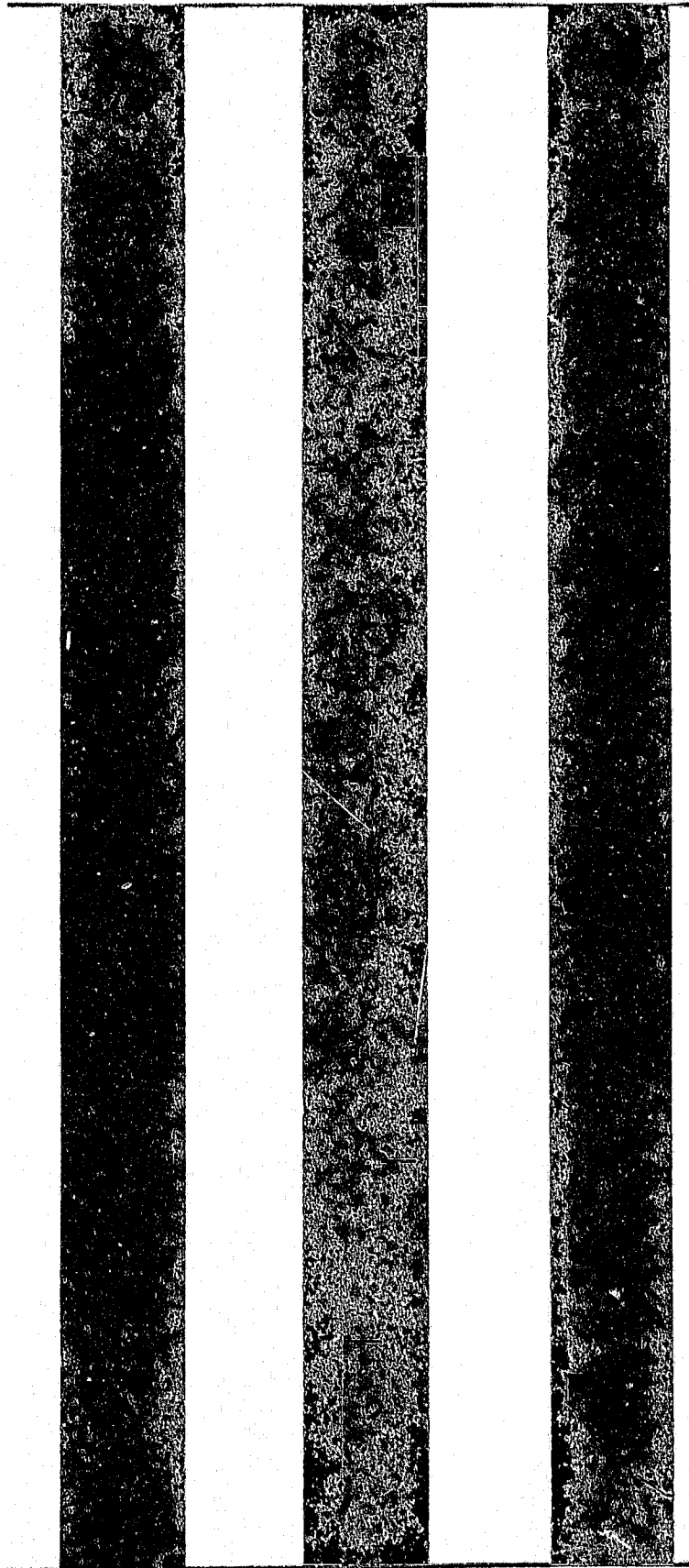
LIVESTOCK AND POULTRY
PRODUCTION AND VALUES 1963-1964

	YEAR	PRODUCTION		VALUE	
		TOTAL	UNIT	PER UNIT	TOTAL
HOGS	1964	5,730	Cwt.	\$ 16.00	\$ 91,600
	1963	4,728	"	16.00	75,600
CATTLE					
Range	1964	61,478	"	23.00	1,414,000
	1963	54,400	"	20.60	1,120,600
Dairy	1964	20,410	"	15.00	306,100
	1963	16,112	"	16.50	265,800
Feed Yard Gain in Weight	1964	244,172	"	23.00	5,616,000
	1963	279,789	"	20.57	5,750,000
CHICKEN EGGS	1964	34,133,705	Doz.	.30	10,240,000
	1963	26,974,960	"	.30	8,004,600
CHICKEN MEAT	1964	2,720,496	Lbs.	.04	108,800
	1963	1,825,880	"	.05	91,300
TURKEYS	1964	100,000	Lbs.	.20	20,000
	1963	1,540,000	"	.20	308,000
LIVESTOCK AND POULTRY					
TOTALS					
	1964				\$17,796,500
	1963				15,619,600

AGRICULTURAL CROP REPORT RECAPITULATION

	YEAR	ACREAGE	VALUE
FRUIT & NUT CROPS	1964	48,329	\$ 80,232,200
	1963	49,550	74,693,500
VEGETABLE CROPS	1964	42,021	30,332,150
	1963	41,513	27,561,440
CUT FLOWERS	1964	1,388	2,460,800
	1963	1,160	2,465,700
FIELD CROPS	1964	25,521	5,633,800
	1963	26,784	5,308,000
NURSERY STOCK	1964		1,826,400
	1963		1,646,700
APIARY PRODUCTS	1964		259,400
	1963		84,000
LIVESTOCK & POULTRY	1964		17,796,500
	1963		15,619,600
DAIRY PRODUCTS	1964		3,781,900
	1963		3,634,300
GRAND TOTAL	1964		\$142,323,150
	1963		\$131,013,240

1959 Crop Valuation	\$102,821,348
1960 Crop Valuation	102,631,750
1961 Crop Valuation	110,643,140
1962 Crop Valuation	120,292,000
1963 Crop Valuation	131,013,240
1964 Crop Valuation	142,323,150



1965

1965

VENTURA COUNTY

ANNUAL REPORT

AND
CROP STATISTICS



AGRICULTURAL
COMMISSIONER

UNIVERSITY OF CALIFORNIA
LIBRARY
APR 18 1965

A N N U A L R E P O R T

of

C. J. BARRETT
AGRICULTURAL COMMISSIONER

COUNTY OF VENTURA, CALIFORNIA

Year Ending December 31, 1965

to

BOARD OF SUPERVISORS
VENTURA COUNTY

District 1 - H. F. Robinson

District 3 - J. K. MacDonald

District 2 - John C. Montgomery

District 4 - Fred E. Ireland

District 5 - Thomas E. Laubacher

and

CHARLES PAUL, DIRECTOR OF AGRICULTURE
STATE OF CALIFORNIA

DEPARTMENT PERSONNEL

Commissioner

C. J. Barrett

Deputy Commissioners

John C. Allee (Quarantine, Surveys)
Clyde W. May (Pest Control)
John L. Schall (Weed and Vertebrate Control)

Supervising Inspectors

Verner E. Holmer (Nursery, Seed and Plant Disease)
W. Mark Jones (Camarillo-Oxnard District)
Paul B. Travis (Standardization)

Senior Inspectors

Donald Anderson (Ventura District Inspector)
Gerald Ashton (Ojai District Inspector)
Murl Boren (Santa Paula-Fumigation and Nursery Inspection)
Richard Chase (Oxnard-Quarantine)
I. L. Clements (Moorpark-Simi District Inspector)
Harold R. Hawkins (Fillmore-Bardsdale District Inspector)
George D. Peters (Oxnard-Pest Control)
Edward R. Urban (Santa Paula District Inspector)
Richard Watts (Camarillo-Somis-Thousand Oaks Inspector)
Kenneth G. Weiss (County-wide Egg Standardization, Poultry
Meat Standardization)

Agricultural Inspectors

Bruce Burns (Moorpark-Simi - Weed and Rodent Control)
Gene Fidel (Oxnard-Standardization)
Donald Hare (Oxnard-Standardization)
Dewey Runkle (Santa Paula - Weed and Rodent Control)
Larry Stocker (County-wide - Apiary Inspector)
Floyd Ward (Santa Paula - Weed and Rodent Control)

Agricultural Field Assistants

Kenneth Clinton (Weed and Rodent Control)
James Fullmer (Weed and Rodent Control)
Glen Hackworth (Weed and Rodent Control)
Carroll Hannah (Weed and Rodent Control)
Donald Janssen (Weed and Rodent Control)
Carl Whittaker, Jr. (Weed and Rodent Control)

Senior Account Clerk

Shirley Carter

Intermediate Clerk-Typists

Elizabeth Smith
Ramona Chavez (Part Time)

COUNTY OF VENTURA
DEPARTMENT OF AGRICULTURE

FINANCIAL STATEMENT

Fiscal Year 1964-1965

Salaries and Wages

Commissioner	\$ 13,464.00	
Deputy Commissioners (3)	25,722.00	
Inspectors	149,861.67	
Office Help	10,704.00	
Other Help	<u>21,997.64</u>	\$ 221,749.31

Maintenance and Operation 40,224.49

Capital Outlay 776.97 \$ 262,750.77

REVENUE \$ 37,283.21

* * * * *

\$ 225,467.56

Classification of Estimated Expenditures by Functions:

Plant Quarantine	\$ 44,170.37	
Standardization	37,306.99	
Insect Detection and Survey	9,093.59	
Plant Disease Detection and Survey	5,043.72	
Eradication and Control Programs	9,935.65	
Field and Orchard	11,910.52	
Nursery Inspection	11,677.90	
Seed Inspection	6,573.59	
Vertebrate Control (County Expense)	12,445.31	
Plague Suppression (County Expense)	28,024.11	
Weed Control (County Expense)	22,352.54	
Apiary Inspection	6,432.21	
Injurious Materials and Injurious Herbicides	1,725.99	
Pest Control Operator Enforcement	9,711.96	
Crop Statistics	6,781.15	
Other Items	<u>39,565.17</u>	\$ <u>262,750.77</u>

VENTURA COUNTY
DEPARTMENT OF AGRICULTURE

Agricultural Building
Santa Barbara and Eighth Streets
Santa Paula, California

TO THE DIRECTOR OF THE STATE DEPARTMENT OF AGRICULTURE:

Pursuant to Section 65.5 of the Agricultural Code, we submit the estimated production, crop values, and acreage figures for the calendar year 1965.

The totals shown for the year 1965 are lower than the record year of 1964. The decrease in F.O.B. values can be attributed to the prices received for some of the major crops, especially Valencia Oranges.

All values used in this report are F.O.B. and include all costs pertaining to growing, harvesting and selling, and in no way can they be construed as net profits. Many of the crops returned little or no profit for the year's work.

Highlighting the year was the loss of some crops due to rains, the shortage of experienced labor and the problems of extended seasons. Citrus, which accounts for almost one-half of the total value of the report, felt the shortage of labor more than did some of the other crops.

To show just what was necessary to harvest the citrus crops, the following figures are of importance. During the year 1965, a total of 6,273 workers was recruited and processed to maintain a peak of 3,265 persons to pick the total crop of 25,049,240 field boxes of all citrus fruits. During the year 1965, a total of 27,182 persons was recruited and processed as workers to maintain a peak work force of 3,300 persons to pick 21,896,702 field boxes of citrus fruit. This large recruitment program not only caused delay in harvesting the fruit but cost additional money. This extra cost, plus the decline in sales prices, was one of the reasons the year will long be remembered.

Tomatoes felt the labor shortage with a large reduction in acreage over the previous years. Much of the cannery tomato crop was harvested with mechanical harvesters.

Increases were shown in some of the vegetable crops, as well as in the nursery values. Acreage was lost to subdivisions and industry, and the loss is reflected in the total bearing acreage shown in this report.

We wish to extend our sincere appreciation and thanks to the many persons who gave of their time in furnishing us with data to compile this report.


G. J. BARRETT
Agricultural Commissioner

1965

AGRICULTURAL CROP ACREAGES

The following are the acres devoted to major agricultural crops in Ventura County for the year 1965. The non-bearing acres are those on which trees and plants are five years of age or less.

<u>CROP</u>	<u>BEARING ACRES</u>	<u>NON-BEARING ACRES</u>	<u>TOTAL ACRES</u>
Almonds	37	-	37
Apples	64	2	66
Apricots	149	-	149
Avocados	2,359	348	2,707
Carob	-	8	8
Citron	5	-	5
Grapefruit	660	168	828
Lemons	21,289	1,517	22,806
Macadamia Nuts	3	2	5
Olives	21	-	21
Oranges - Navel	1,998	93	2,091
Oranges-Valencia	16,146	2,719	18,865
Peaches	16	4	20
Pears	3	-	3
Strawberries	535	-	535
Tangerines	23	18	41
Walnuts	4,877	87	4,964
Beans - Dry	10,700	-	10,700
Beans - Seed	1,704	-	1,704
Cutflowers	1,487	-	1,487
Hay & Grain	6,868	-	6,868
Nursery Stock	664	-	664
Seed Crops	1,011	-	1,011
Sugar Beets	2,390	-	2,390
Vegetables	39,902	-	39,902
Total	<u>112,911</u>	<u>4,966</u>	<u>117,877</u>

FRUIT AND NUT CROPS
ACREAGE, PRODUCTION AND VALUES 1964-1965

CROP	YEAR	BEARING ACREAGE	PER ACRE	PRODUCTION TOTAL UNIT	PER UNIT	TOTAL
APPLES	1965	64	8.75	560.00 Ton	62.50	\$ 35,000
	1964	43	2.38	102.00 "	117.65	12,000
AVOCADOS	1965	2,359	1.62	3,832.00 "	504.00	1,931,300
	1964	2,649	2.75	7,296.00 "	258.00	1,882,400
GRAPEFRUIT						
Total	1965	660	16.12	10,638.22 "	98.40	1,046,700
	1964	660	14.80	9,678.00 "	98.17	958,900
Fresh Market	1965			7,036.22 "	133.74	941,100
	1964			5,855.00 "	145.74	853,300
Processed	1965			3,602.00 "	29.30	105,600
	1964			3,913.00 "	26.99	105,600
LEMONS						
Total	1965	21,289	14.96	318,610.00 "	116.19	37,020,300
	1964	21,876	18.34	402,278.00 "	96.47	38,910,500
Fresh Market	1965			198,275.59 "	156.90	31,109,400
	1964			218,418.00 "	135.99	29,702,500
Processed	1965			120,335.00 "	49.12	5,910,900
	1964			183,860.00 "	50.08	9,208,000
ORANGES, NAVEL						
Total	1965	1,998	13.79	27,556.34 "	137.55	3,790,400
	1964	1,941	12.46	24,189.00 "	129.75	3,138,600
Fresh Market	1965			24,713.34 "	150.53	3,720,000
	1964			18,391.00 "	155.72	2,864,000
Processed	1965			2,843.00 "	24.76	70,400
	1964			5,798.00 "	47.36	274,600
ORANGES, VALENCIA						
Total	1965	16,146	11.80	190,612.00 "	125.98	24,014,700
	1964	15,687	12.11	189,996.00 "	157.86	29,992,200
Fresh Market	1965			141,927.00 "	147.36	20,914,400
	1964			120,273.00 "	193.50	23,273,700
Processed	1965			48,685.00 "	63.68	3,100,300
	1964			69,723.00 "	96.36	6,718,500

FRUIT AND NUT CROPS (contd.)
ACREAGE, PRODUCTION AND VALUES 1964-1965

CROP	YEAR	BEARING ACREAGE	PER ACRE	PRODUCTION TOTAL UNIT	PER UNIT	TOTAL
TANGERINES	1965	23	3.00	69.00 "	196.00	13,500
	1964	23	2.90	67.00 "	240.00	16,000
STRAWBERRIES						
Total	1965	535	15.66	8,378.00 "	435.93	3,652,300
	1964	489	17.04	8,330.00 "	489.30	4,076,000
Fresh Market	1965			5,024.00 "	508.00	2,512,000
	1964			7,128.00 "	528.00	3,763,500
Processed	1965			3,354.00 "	340.00	1,140,300
	1964			1,202.00 "	260.00	312,500
WALNUTS	1965	4,877	.45	2,208.00 "	400.00	883,200
	1964	4,961	.55	2,708.00 "	460.00	1,245,600
FRUIT & NUT CROPS						
TOTALS	1965	47,951				\$72,387,400
	1964	48,329				80,232,200

VEGETABLE CROPS

ACREAGE, PRODUCTION AND VALUES 1964-1965

CROP	YEAR	HARVESTED ACREAGE	PER ACRE	PRODUCTION		VALUE	
				TOTAL	UNIT	PER UNIT	TOTAL
BEANS, GREEN							
Processed	1965	11,294	1.92	21,636	Ton	162.84	\$3,523,200
	1964	10,500	2.00	21,000	"	173.00	3,633,000
BEANS, GREEN							
Fresh Market	1965	84	4.00	336	"	240.18	80,700
	1964	138	4.30	597	"	166.33	99,300
BEETS, RED							
	1965	-	-	-	"	-	-
	1964	30	8.50	255	"	49.02	12,500
BROCCOLI							
Processed	1965	1,562	2.42	3,780	"	164.26	620,902
	1964	1,693	2.62	4,442	"	148.10	657,800
CABBAGE, RED							
	1965	87	10.50	913	"	60.00	54,800
	1964	96	14.00	1,344	"	45.50	61,150
CABBAGE, GREEN							
	1965	2,580	11.50	29,670	"	56.00	1,661,500
	1964	2,254	13.00	29,302	"	47.00	1,377,200
CARROTS							
	1965	390	17.81	6,945	"	42.27	293,600
	1964	322	13.00	4,186	"	55.00	230,200
CAULIFLOWER							
	1965	409	2.90	1,186	"	148.00	175,500
	1964	376	4.35	1,637	"	112.00	183,300
CELERY							
	1965	2,855	29.40	83,937	"	91.00	7,638,300
	1964	2,597	29.45	76,481	"	80.00	6,118,500
CHARD							
	1965	27	9.50	256	"	50.00	12,800
	1964	16	8.12	130	"	50.00	6,500
CORN, SWEET							
	1965	42	3.50	147	"	70.00	10,300
	1964	750	3.50	2,625	"	70.00	183,700
CUCUMBERS							
Total	1965	693	12.00	8,324	"	110.41	919,100
	1964	485	10.81	5,243	"	82.35	431,800
Fresh Market	1965			7,524	"	115.62	869,900
	1964			4,493	"	87.00	390,900
Pickling	1965			800	"	61.50	49,200
	1964			670	"	61.00	40,900

VEGETABLE CROPS (contd.)
ACREAGE, PRODUCTION AND VALUES 1964-1965

CROP	YEAR	HARVESTED ACREAGE	PER ACRE	PRODUCTION		VALUE	
				TOTAL	UNIT	PER UNIT	TOTAL
LETTUCE							
Head	1965	3,843	9.95	38,259	Ton	60.00	\$ 2,295,600
	1964	4,721	9.71	45,888	"	60.00	2,753,300
Leaf	1965	982	10.00	9,820	"	64.00	628,500
	1964	815	10.00	8,150	"	62.14	506,400
Romaine	1965	2,300	11.00	25,300	"	63.64	1,610,000
	1964	2,187	13.67	29,865	"	65.63	1,960,000
ONIONS, GREEN	1965	64	15.81	1,012	"	49.70	50,296
	1964	10	8.25	82	"	66.66	5,500
PARSLEY	1965	249	27.50	6,848	"	25.00	171,200
	1964	200	32.50	6,500	"	34.62	225,000
PEAS							
Processed	1965	2,610	2.05	5,351	"	77.00	412,027
	1964	2,420	1.62	3,920	"	78.10	306,000
PEPPERS, BELL							
Total	1965	445	8.44	3,760	"	107.39	403,800
	1964	441	7.45	3,287	"	78.80	259,000
Fresh Market	1965			1,980	"	150.00	297,000
	1964			955	"	137.00	130,800
Processed	1965			1,780	"	60.00	106,800
	1964			2,332	"	55.00	128,200
PEPPERS, GREEN CHILI							
	1965	1,388	6.18	8,578	"	65.00	557,570
	1964	1,948	6.00	11,688	"	57.43	671,200
PEPPERS, PIMIENTO							
	1965	1,000	4.90	4,900	"	70.26	344,300
	1964	918	6.37	5,848	"	67.50	394,700

VEGETABLE CROPS (contd.)

ACREAGE, PRODUCTION AND VALUES 1964-1965

CROP	YEAR	HARVESTED		PRODUCTION		VALUE	
		ACREAGE	PER ACRE	TOTAL	UNIT	PER UNIT	TOTAL
SPINACH							
Total	1965	1,140	7.06	8,045	Ton	30.63	\$ 246,400
	1964	1,400	8.25	11,560	"	32.78	378,900
Fresh Market	1965			745	"	81.73	60,900
	1964			2,660	"	57.12	151,900
Processed	1965			7,300	"	25.40	185,400
	1964			8,900	"	25.50	227,000
SQUASH, WINTER	1965	118	9.57	1,130	"	30.00	33,900
	1964	113	10.00	1,130	"	20.00	22,600
TOMATOES							
Total	1965	5,082	15.65	79,576	"	81.56	6,490,600
	1964	6,954	19.98	139,080	"	62.50	8,691,200
Fresh Market	1965			35,076	"	140.00	4,910,600
	1964			43,771	"	137.70	6,027,900
Processed	1965			44,500	"	35.50	1,580,000
	1964			95,255	"	27.96	2,663,300
TOMATOES, CHERRY	1965	18	10.00	180	"	180.00	32,400
	1964	37	9.00	333	"	190.00	63,300
MISC. VEGETABLES	1965	640	6.50	4,160	"	65.00	270,400
	1964	590	6.00	3,540	"	65.00	230,100
MUSHROOMS	1965			18,000	CWT.	40.00	720,000
	1964			18,375	"	44.85	824,200
VEGETABLE CROPS							
TOTALS	1965	39,902					\$29,257,675
	1964	42,021					30,332,150

FIELD CROPS
ACREAGE, PRODUCTION AND VALUES 1964-1965

CROP	YEAR	HARVESTED ACREAGE	PER ACRE	PRODUCTION		VALUE		
				TOTAL	UNIT	PER UNIT	TOTAL	
GRAIN								
Wheat, Dry	1965	10,700	.92	9,800	Ton	\$270.00	\$2,646,000	
	1964	10,000	.87	8,750	"	260.00	2,275,000	
Soy Beans	1965	1,704	1.04	1,772	"	296.50	525,400	
	1964	1,276	1.08	1,372	"	309.16	424,200	
HAY								
Alfalfa, Green	1965	425	30.00	12,750	"	6.00	76,500	
	1964	660	30.00	18,000	"	5.00	90,000	
Oats, Barley	1965	2,643	1.25	3,304	"	23.48	77,600	
	1964	3,687	.94	3,465	"	28.00	97,000	
GRAIN	1965	3,800	.75	2,850	"	55.17	157,200	
	1964	3,870	.57	2,209	"	58.85	130,000	
SEED								
Flower	1965	266	143.00	38,038	Lbs.	2.36	89,800	
	1964	177	150.00	26,550	"	2.68	71,200	
Vegetable	1965	745	181.00	134,845	"	3.06	412,600	
	1964	1,490	224.50	334,600	"	2.87	961,800	
SWEET BEETS	1965	2,390	25.88	61,853	Tons	13.57	839,300	
	1964	4,421	25.90	114,577	"	13.83	1,584,600	
TOTALS								
TOTALS	1965	22,673					\$4,824,400	
	1964	25,521					5,633,800	

LIVESTOCK AND POULTRY
PRODUCTION AND VALUES 1964-1965

	YEAR	PRODUCTION		PER UNIT	VALUE	
		TOTAL	UNIT			TOTAL
HOGS	1965	4,600	CWT.	\$ 24.00	\$	110,400
	1964	5,730	"	16.00		91,600
CATTLE						
	Range	1965	70,560	"	22.80	1,608,800
	1964	61,478	"	23.00		1,414,000
Dairy	1965	18,400	"	15.50		285,200
	1964	20,410	"	15.00		306,100
Feed Yard Gain in Weight	1965	231,200	"	23.50		5,433,200
	1964	244,172	"	23.00		5,616,000
CHICKEN EGGS	1965	33,571,000	DOZ.	.30		10,071,300
	1964	34,133,705	"	.30		10,240,000
CHICKEN MEAT	1965	2,717,500	LBS.	.04		108,700
	1964	2,720,496	"	.04		108,800
TURKEYS	1965	980,000	"	.24		235,200
	1964	100,000	"	.20		20,000
<u>LIVESTOCK AND POULTRY</u>						\$17,852,200
TOTALS	1965					17,796,500
	1964					

NURSERY STOCK PRODUCTION
1964-1965

VARIETY	YEAR	UNIT	PER UNIT	TOTAL PRODUCTION	VALUE
AVOCADOS	1965	Trees	2.50	20,240	\$ 50,600
	1964			7,640	21,000
CITRUS	1965	Trees	2.50	135,560	338,900
	1964			119,720	239,400
CITRUS SEED	1965	Quarts	20.00	476	9,500
	1964			181	3,600
AVOCADO SEED	1965	Seed	.12	35,000	4,200
	1964			-	-
WALNUTS	1965	Trees	1.25	12,080	15,100
	1964			12,424	14,500
ORNAMENTALS	1965	Plants	.81	800,000	648,000
	1964			1,655,034	559,300
VEGETABLE PLANTS	1965	Flats	.68	790,441	537,500
	1964			515,000	334,700
TOMATO PLANTS -- FIELD GROWN	1965	Plants	7.86/M	81,860,700	643,400
	1964			95,000,000	653,900
GROUND COVERS	1965				200,000
	1964				-
<u>NURSERY STOCK PRODUCTION</u>					
TOTALS	1965				\$2,902,600
	1964				1,826,400

CUT FLOWERS
1964-1965

	YEAR	ACREAGE	TOTAL VALUE
CUT FLOWERS	1965	1,487	\$3,440,700
	1964	1,388	2,460,800

The above acreages and values were accounted for by the following varieties of flowers: Chrysanthemums, Asters, Marguerites, Carnations, Daisies, Gladiolus, Stock, Daffodils and Dutch Iris.

APIARY PRODUCTS

1964-1965

PRODUCTS	YEAR	PRODUCTION		VALUE	
		TOTAL	UNIT	PER UNIT	TOTAL
HONEY	1965	2,290,920	LBS.	.11	\$252,000
	1964	1,800,000	"	.125	225,000
BEESWAX	1965	114,546	"	.40	45,800
	1964	86,000	"	.40	34,400
APIARY PRODUCTS TOTALS					
	1965				\$279,800
	1964				259,400

No. of Apiaries - 318
 No. of Colonies - 19,038

DAIRY PRODUCTS

1964-1965

PRODUCT	YEAR	PRODUCTION		VALUE	
		TOTAL	UNIT	PER UNIT	TOTAL
Market Milk	1965	796,000	CWT.	5.20	\$4,139,000
	1964	715,000	"	5.28	3,777,000
Manufacturing Milk	1965	1,210	"	3.97	4,800
	1964	1,260	"	3.89	4,900
DAIRY PRODUCTS TOTALS					
	1965	797,210	CWT.		\$4,143,800
	1964	716,260	"		3,781,900

AGRICULTURAL CROP REPORT RECAPITULATION

	YEAR	ACREAGE	VALUE
FRUIT & NUT CROPS	1965	47,951	\$ 72,387,400
	1964	48,329	80,232,200
VEGETABLE CROPS	1965	39,902	29,257,695
	1964	42,021	30,332,150
LIVESTOCK & POULTRY	1965		17,852,200
	1964		17,796,500
FIELD CROPS	1965	22,673	4,824,400
	1964	25,521	5,633,800
DAIRY PRODUCTS	1965		4,143,800
	1964		3,781,900
CUT FLOWERS	1965	1,487	3,440,700
	1964	1,388	2,460,800
NURSERY STOCK	1965		2,902,600
	1964		1,826,400
APIARY PRODUCTS	1965		279,800
	1964		259,400
GRAND TOTAL	1965		\$135,088,595
	1964		142,323,150

* * * * *

1960 Crop Valuation	102,631,750
1961 Crop Valuation	110,643,140
1962 Crop Valuation	120,292,000
1963 Crop Valuation	131,013,240
1964 Crop Valuation	142,323,150
1965 Crop Valuation	135,088,595