



AgEcon SEARCH
RESEARCH IN AGRICULTURAL & APPLIED ECONOMICS

The World's Largest Open Access Agricultural & Applied Economics Digital Library

This document is discoverable and free to researchers across the globe due to the work of AgEcon Search.

Help ensure our sustainability.

Give to AgEcon Search

AgEcon Search

<http://ageconsearch.umn.edu>

aesearch@umn.edu

*Papers downloaded from **AgEcon Search** may be used for non-commercial purposes and personal study only. No other use, including posting to another Internet site, is permitted without permission from the copyright owner (not AgEcon Search), or as allowed under the provisions of Fair Use, U.S. Copyright Act, Title 17 U.S.C.*

EPTD Discussion Paper No. 124

**SPATIAL PATTERNS OF CROP YIELDS
IN LATIN AMERICA AND THE CARIBBEAN**

Stanley Wood, Liangzhi You, and Xiaobo Zhang

Environment and Production Technology Division

International Food Policy Research Institute

2033 K Street, N.W.

Washington, D.C. 20006 U.S.A.

October 2004

Copyright © 2004: International Food Policy Research Institute

EPTD Discussion Papers contain preliminary material and research results, and are circulated prior to a full peer review in order to stimulate discussion and critical comment. It is expected that most Discussion Papers will eventually be published in some other form, and that their content may also be revised.

ABSTRACT

From a theoretical perspective crop yields should tend to converge over time and space as: growth in yield potential exhibits diminishing returns; an increasing share of farmers shift to using high yielding varieties (HYVs); barriers to the free flow of knowledge and information are removed; and significant investments continue to be made in supporting institutions whose mandates include facilitating and accelerating the cross-border flow of improved agricultural technologies. Using a new, sub-national crop yield database for Latin America and the Caribbean (LAC) we examine whether convergence is indeed occurring, and discover it is not. On the contrary, there is evidence of divergence. We test three hypotheses that might help account for this finding: that technology generation has been biased towards production in more-favored production systems leaving behind persistent pockets of production in more marginal lands; that rainfall patterns have changed in ways that exacerbate yield divergence, and that technology spillover across borders remains more problematic than within-country spillover. We find evidence to support all three of these hypotheses. Further work is needed to assess the relative importance of these sources of yield divergence both across and within LAC. As anticipated, rainfall variability is poorly linked to the variability of irrigated crop yields, but more strongly linked to variability in rainfed crops. The results suggest while some countries and regions within countries forge ahead with crop yield improvements there are many areas, often in smaller countries, where the livelihoods of many farmers - and likely a disproportionate share of LAC's rural poor - continue to be constrained by low-productivity agriculture. There remains significant work ahead for national governments and for publicly-funded regional and international agricultural technology institutions to remedy this situation.

KEYWORDS: crop yields, maize, rice, soybeans, Latin America, Caribbean

TABLE OF CONTENTS

1. Introduction.....	1
2. Comprehensive LAC Data Set.....	5
3. Spatial Patterns of Crop Yields.....	6
4. Underlying Causes.....	13
5. Conclusions.....	22
References.....	25
Appendix.....	28

SPATIAL PATTERNS OF CROP YIELDS IN LATIN AMERICA AND THE CARIBBEAN

Stanley Wood, Liangzhi You, and Xiaobo Zhang

1. INTRODUCTION

The rapid spread of new technologies across regions is key to a country's economic prosperity and balanced development. Taking agriculture as an example, the diffusion of improved crop varieties has been a major source of agricultural productivity growth (Evenson and Gollin 2003). Facing the increasing pressures of population growth, proportionately greater increases in the demand for food, and dwindling stocks of suitable land resources, the global agricultural research community has made tremendous strides in developing new, high-yield varieties (HYVs) over the past several decades in order to avoid the Malthusian nightmare (Alston 2002). The Green Revolution, widely recognized as a major achievement of these efforts, significantly improved the yield of the world's major food staples, but especially of wheat, rice and later maize, averted widespread famine, and lifted millions of poor farmers out of poverty (Borlaug 1970; Hazell and Ramasamy 1991). However, the significant gains in potential crop yield accomplished during the Green Revolution did not reach everywhere, and have become increasingly difficult to emulate over time (Cassman *et al* 2003). We believe that the search for new sources of productivity growth can be aided by improving our understanding of the spatio-temporal evolution of crop yields.

Economists (Griliches 1957, Rosenburg 1982, Grossman and Helpman 1995) have long recognized the importance of spatial spillover of technological innovation for economic growth in general and increase in productivity in particular. As Wan (2004) argues strongly, it is much

more challenging to develop a new technology than it is to adopt or adapt an existing one. In recognition of these strong economic arguments, the past several decades have witnessed the expansion of institutional mechanisms designed to foster the development and dissemination of agricultural technologies in a regional and sub-regional context.¹ Regardless of the institutional setting, however, the constant quest for incremental gains in the genetic yield potential of crops appears to be subject to the law of diminishing returns (Cassman et al. 2003). As yield potential increases, further improvement becomes more challenging. Furthermore, industry-scale yield growth in a region should diminish over time as farmers abandon traditional crop varieties and adopt HYV's (since the proportionate yield gain derived from the initial adoption of HYVs tends to be much larger than the individual yield increments made by adopting successive generations of HYVs). Given the generally ready access to agricultural technologies, technology latecomers may readily "catch up" simply by adopting existing technologies superior to their own. All of these factors suggest that, over time, one would expect crop yields to converge. On the other hand, agroecological factors play a more significant role in the potential for transferring agricultural technologies (i.e., technology spillover) than they do for industrial technologies (Wood and Pardey 1998). An HYV suited to cultivation in a certain location may not grow well in other areas due to differences in climate, terrain, or soil types. Spatial variations in agroclimatic conditions may be an impediment to the widespread transfer of agricultural technologies. Moreover, economic factors, such as relative prices of inputs and outputs, also matter to the adoption of all types of technologies, including HYVs. Whether the flow, adoption, and efficacy of technology have become more uniform over time and space is an empirical question we set out to address in this paper.

¹ For example in LAC: IICA, Instituto Internacional para la Cooperación Agropecuaria, and FONTAGRO, Fondo Regional de Tecnología Agropecuaria, as well as three research centers of the Consultative Group on International Agricultural Research (CGIAR).

Many studies on technology adoption and transfer are at a micro scale and few have examined the spatial patterns of technology spillover in a broader, cross-country context, and at the industry scale, primarily because of data limitations. To address this analytical gap we use medium-resolution crop production data to examine patterns of yield variation and variability across a regional scale. We also provide some exploratory analysis of why such patterns might exist. Such insights are useful to regional and sub-regional funding and technical agencies seeking to design investment strategies that maximize cross-country technology spillovers. Our study uses a sub-national agricultural output data set for LAC for three major crops (rice, maize, and soybean). The dataset, spanning the period 1975 to 1998, has been compiled by IFPRI and the International Center for Tropical Agriculture (CIAT) over several years (Alston *et al* 2000; Pardey *et al* 2000). To our knowledge, this is the most comprehensive agricultural production data set available for the LAC region.

The first objective of this study is to document the changes in spatial patterns of crop yield using the new data set. Our results show that yield levels across the region do not appear to have converged over the time period examined. This could be due to a broad range of information, institutional and geographical barriers to the flow of technology, but also to a growing disparity in the ability of farmers across the region to utilize any given technological opportunity. Therefore, our second objective aims to understand why spatial variations persist, using geographic information system (GIS) tools and an inequality decomposition method.

We propose three hypotheses to explain the observed increasing regional yield disparities. First, crop and crop management technologies developed over the past several decades have been heavily biased toward more favored (e.g., irrigated) production systems. Most HYVs are very responsive to modern inputs such as fertilizer, especially nitrogen, and water.

Modern varieties, therefore, have usually been adopted only in areas having sufficient rainfall or irrigation facilities, and fewer terrain and soil constraints. If farmers know the optimal irrigation schedule, the variability in yields generally decreases with increased irrigation (Hazell 1989). In rainfed, especially upland, areas lower-input, lower-yielding traditional varieties still predominate. The expansion of irrigated areas, a key feature of LAC agriculture over the past forty years, has thus given rise to a broader spectrum of irrigated and rainfed production domains, often existing in close proximity (Sanint and Wood 1998, for the case of rice). At the same time, there is abundant evidence of the expansion of rainfed production into less productive areas, particularly in the hillsides of Central America and the Andean region, and a general decline in the fallow periods and consequently in the fertility of soils associated with many low-input rainfed systems (Pender & Scherr 1999). These factors support the notion of a yield divergence over time on a regional basis. We use rice yield data at the district (municipio) level in Brazil to test this hypothesis.

Since yields of rainfed crops are strongly linked to weather conditions (Walker 1989), the second hypothesis is that changes in rainfall patterns during the period 1975-1998 have exacerbated yield divergence across LAC. Either a downward trend in annual rainfall totals or an increase in rainfall variability could plausibly be associated with the type of crop yield divergence observed. Third, we hypothesize that technology transfers across borders are often less efficient than those within a country due to lack of institutional arrangements and domestic research capacity to adapt new (“spillin”) technologies. This may create large between-country variations in yields. To test this hypothesis, we decompose total variation into *between-country* and *within-country* variations. If the variation is largely due to between-country difference, then regional (multi-country) technology intervention strategies and mechanisms, such as those

supported by IICA and the sub-regional networks (“PROCI’s”) they convene, FONTAGRO, and the CGIAR, are particularly important.

2. COMPREHENSIVE LAC DATA SET

In cooperation with various partners, notably CIAT, IFPRI compiled a sub-national data series for Latin America and the Caribbean (Pardey et al 2000). These data are taken from various sources such as national agricultural census and statistical publications. We developed a time series (from 1975-1998) of basic production statistics for eight crops, namely rice, wheat, maize, edible beans, sorghum, cassava, potato and soybean at the province or department level, focusing on obtaining disaggregated spatial information for geographically large countries, or those having a significant regional share of the production of those commodities. For Brazil, we have more detailed data at the district (municipio) level. To facilitate cross-country comparison of yield data derived from a wide variety of sources, we recalibrated sub-national area and production totals in each year by applying sub-national shares derived from the disaggregated data to published FAO national area and production totals.

In the current study, we choose to examine the yields of soybean, maize and rice because of their relative importance to LAC agriculture. Based on the value of production in 2000, soybean, maize and rice rank first, second and sixth respectively (FAOSTAT 2002 and authors’ calculations). Furthermore, the three crops are widely distributed across LAC, providing a spatially representative picture of LAC agriculture.

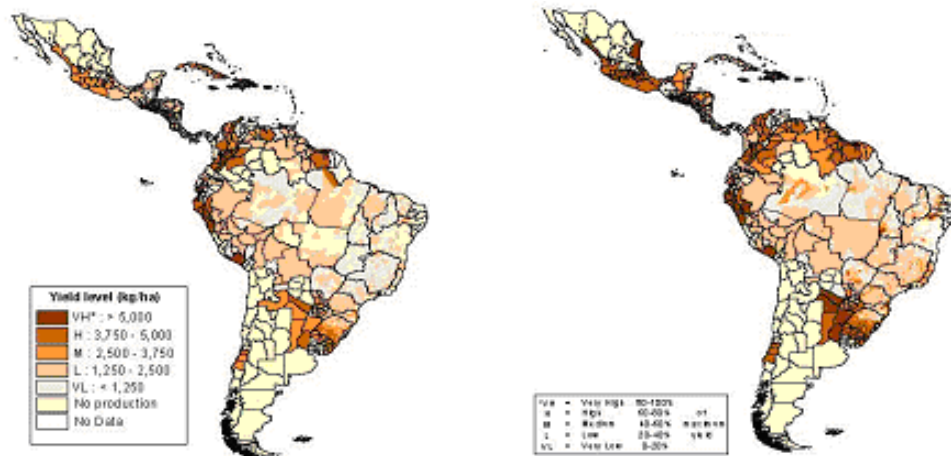
3. SPATIAL PATTERNS OF CROP YIELDS

Maps 1-3 shows the spatial patterns of yield levels of rice, maize and soybean, respectively, in 1975 and 1995.

Map 1--Spatial change of rice yields in Latin American and Caribbean

(a) 1975-77 Average

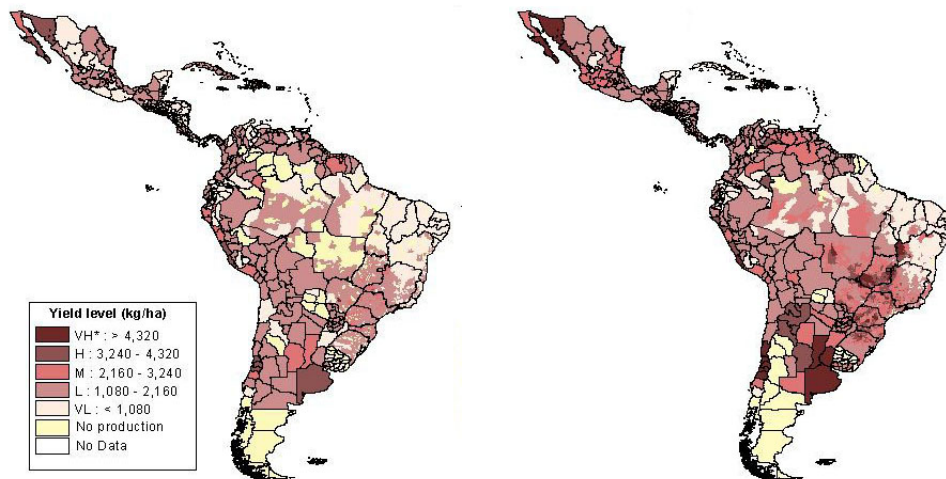
(b) 1993-95 Average



Map 2--Spatial change of maize yields in Latin American and Caribbean

(a) 1975-77 Average

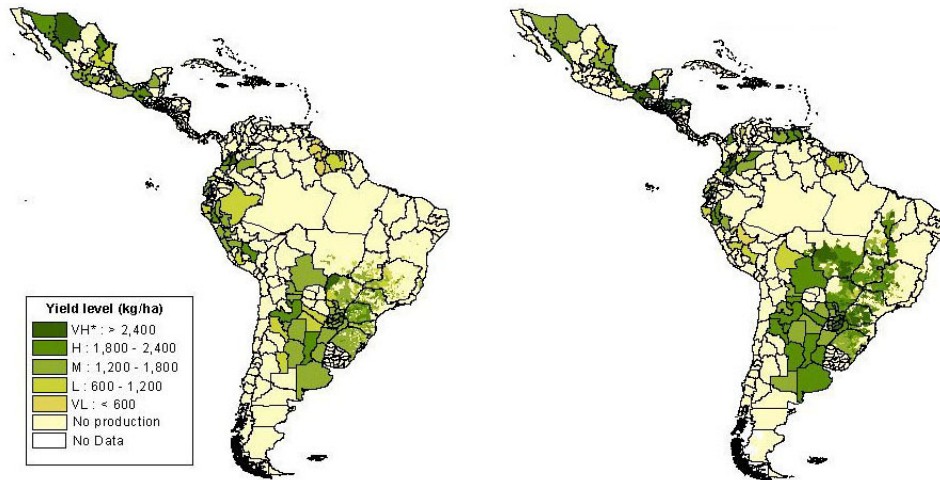
(b) 1993-95 Average



Map 3--Spatial change of soybean yields in Latin American and Caribbean

(a) 1975-77 Average

(b) 1993-95 Average



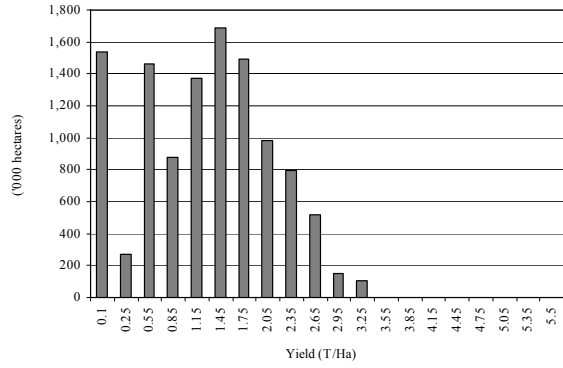
Two general trends are apparent from these maps. First, planted areas for all three crops have expanded and overall the yield levels have increased. In 1975, the highest rice yields were being obtained in the western parts of the Colombian savannah, and the Pacific coast areas of Peru and Ecuador. By 1995, the rice yields in those areas still remained high, but new high-yielding areas had emerged in the coastal areas of southern Mexico, Atlantic coastal regions of Guyana and Surinam, and the region along the joint borders of Brazil, Paraguay, Argentina and Uruguay. For example, rice yields in Santa Catarina, Brazil reached very high levels from a world perspective, even though the overall yields in Brazil are lower than the world average. Maize is widely grown in LAC, and Brazil shows obvious maize production expansion in its mid-west regions. Northern Mexico and East Argentina bordering Uruguay had the highest regional maize yields in both 1975 and 1995. The area along the south and east boundaries of Goias in Brazil shows dramatic increase in maize yields between 1975 and 1995. Soybean production exhibits perhaps the most dramatic change over the 1975-95 period. In 1975, most soybean production occurred to the

south of the 30-degree latitude. Since then soybean production has advanced northward (Pardey et al, in press). In 1975, the highest yields of soybean were to be found in Northern Mexico. In 1995, the midwest and southeast regions of Brazil, West Bolivia and North and West Argentina all have higher soybean yields.

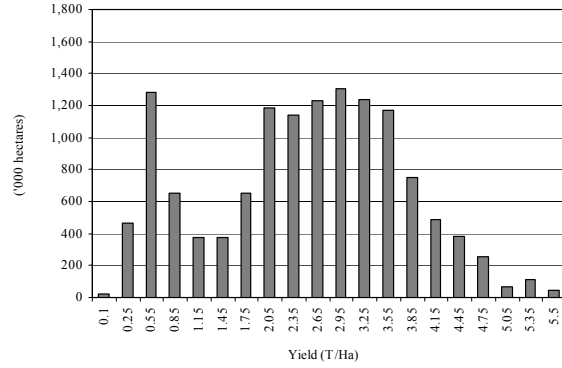
The maps provide a useful visualization of the spatial patterns and trends between the two snapshot years. To obtain a more quantitative sense of the changes involved, we further present histograms of yield distribution in Brazil and “LAC except Brazil” in Figures 1 and 2, respectively.

Figure 1--Crop yield distributions in Brazil: 1975-77 and 1993-95

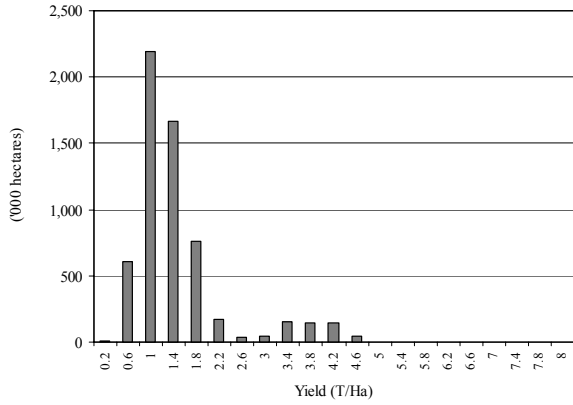
Maize, 1975-77



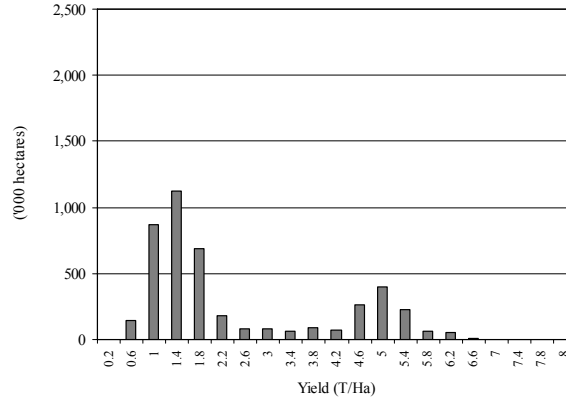
Maize, 1993-95



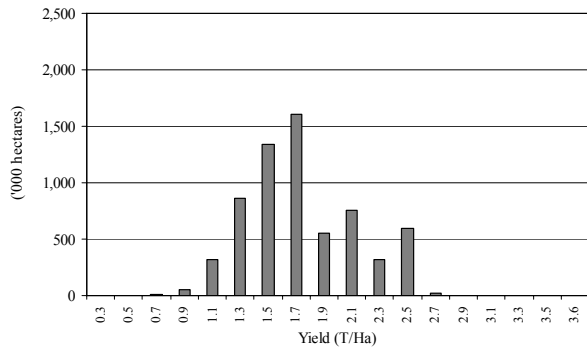
Rice, 1975-77



Rice, 1993-95



Soybean, 1975-77



Soybean, 1993-95

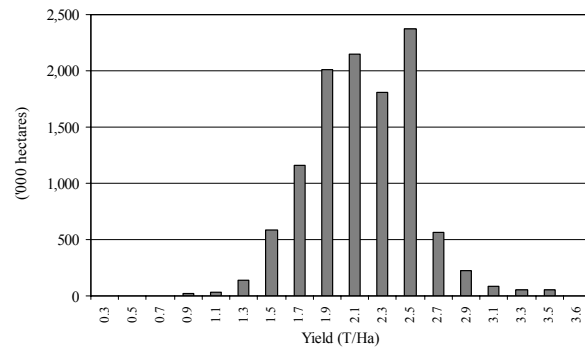
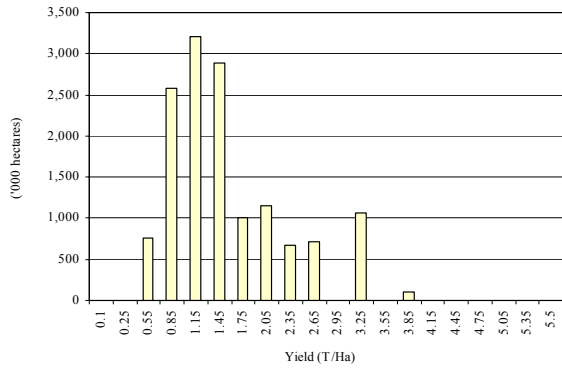
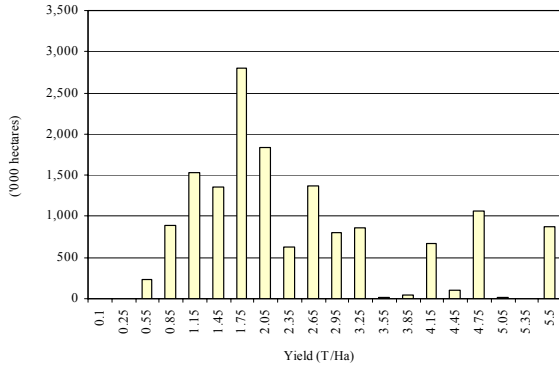


Figure 2--Crop yield distributions in Latin American and Caribbean except Brazil: 1975-77 and 1993-95

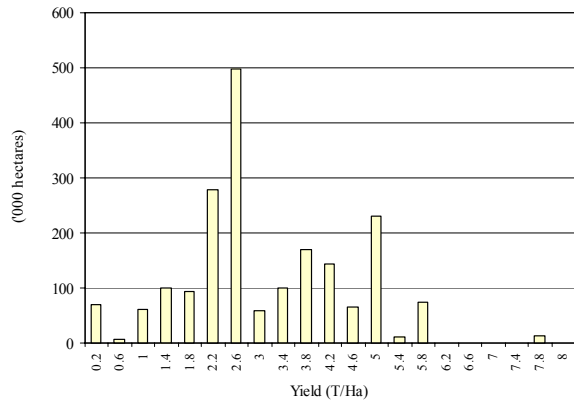
Maize, 1975-77



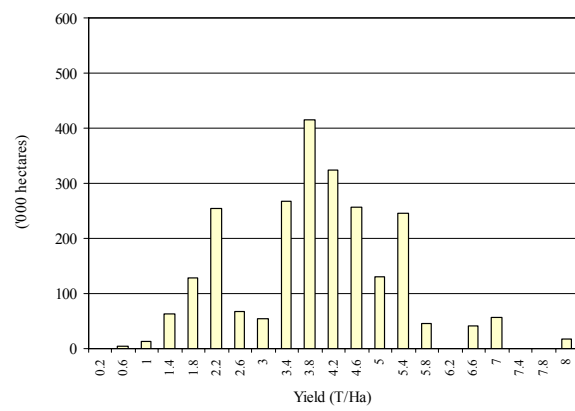
Maize, 1993-95



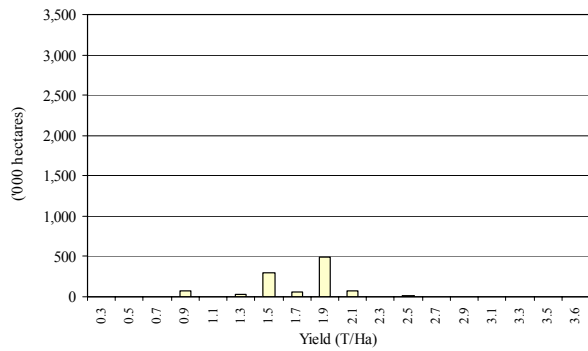
Rice, 1975-77



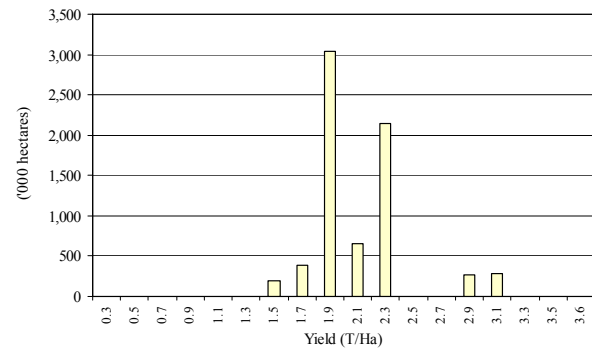
Rice, 1993-95



Soybean, 1975-77



Soybean, 1993-95



The histograms show the range and distribution of yields across LAC in terms of area harvested, and represent over 4,500 observations, including 4,276 municipalities in Brazil and 225 departments for the rest of LAC. For all three crops, the generally increasing yield trend is illustrated by the rightward shift of the yield distributions between 1975 and 1995. On average, LAC yields increased from 1.6 to 2.5 t ha⁻¹ for maize, 1.9 to 2.9 t ha⁻¹ for rice, and 1.7 to 2.2 t ha⁻¹ for soybean.

The figures also reveal an increasing spread of yield values. In 1975, most maize yields lay between 0.1 and 3.5 t ha⁻¹ with no yield higher than 4 t ha⁻¹. In 1995, regional maize yields were almost uniformly distributed between 0.1 and 4.5 t ha⁻¹. Rice shows an apparent structural shift into a bimodal distribution between 1975 and 1995, reflecting a growing polarization between irrigated and rainfed production systems. Brazil dramatically increased its high-yielding irrigated rice area between 1975 and 1995, but over two-thirds of its total rice production area is still rainfed with average yields of no more than 1.5 t ha⁻¹. For the rest of Latin America, yield increases are more spatially uniform, and over half of the rice area has yields of 4 t ha⁻¹ or more. Changes in the distribution of soybean yields are the inverse of those seen for maize. In 1995, in both Brazil and rest of LAC, large commercial soybean producers dominated regional production. Soybean yields are clustered around 2.0 t ha⁻¹ for most of the harvested area. At the same time, the total area planted to soybean has increased dramatically, making soybean the most extensive crop in LAC.

Table 1 reports spatial yield variability for three major crops at the department level using a generalized entropy measure (see the Appendix for technical details).

Table 1--Spatial yield variability in LAC: Maize, rice and soybean, 1975-95.

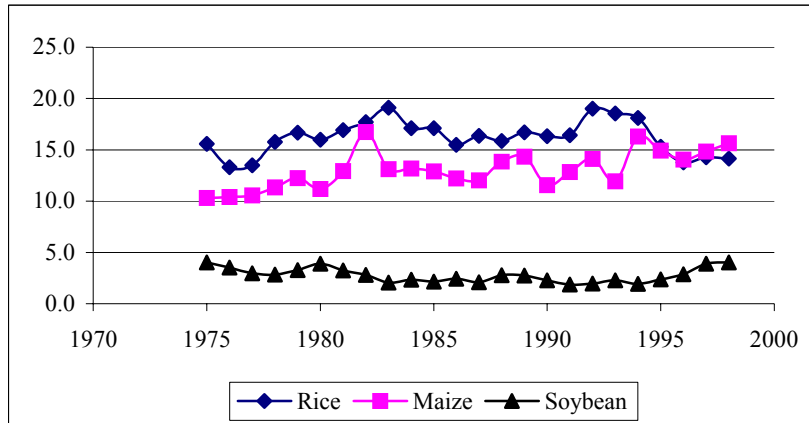
Year	Total Variation (Generalized Entropy Index)			Between-country /total variation (%) (Polarization Index)		
	Rice	Maize	Soybean	Rice	Maize	Soybean
	1975	15.6	10.3	4.0	44.8	29.7
1976	13.3	10.4	3.5	46.3	25.2	60.0
1977	13.5	10.6	2.9	45.0	26.8	52.2
1978	15.8	11.3	2.8	49.1	35.5	53.0
1979	16.7	12.3	3.3	52.5	43.7	60.3
1980	16.0	11.2	3.9	51.0	29.4	66.3
1981	16.9	12.9	3.2	50.1	26.3	59.5
1982	17.7	16.8	2.8	46.9	17.5	62.1
1983	19.1	13.1	2.1	43.3	21.9	59.1
1984	17.1	13.2	2.3	42.8	21.1	67.5
1985	17.1	12.9	2.2	39.2	26.1	64.7
1986	15.5	12.2	2.4	38.6	33.4	68.4
1987	16.4	12.0	2.1	37.0	29.1	60.4
1988	15.9	13.8	2.8	36.5	26.6	58.7
1989	16.7	14.3	2.7	33.2	21.4	54.3
1990	16.3	11.6	2.3	29.9	24.3	69.0
1991	16.4	12.8	1.9	25.7	20.7	70.2
1992	19.0	14.1	2.0	23.4	26.8	80.5
1993	18.5	12.0	2.3	19.7	35.8	65.4
1994	18.1	16.3	1.9	23.0	24.1	64.4
1995	15.3	14.9	2.4	25.8	25.8	57.2
1996	13.8	14.1	2.9	29.4	27.3	53.8
1997	14.3	14.9	3.9	28.2	28.7	55.4
1998	14.2	15.6	4.0	30.3	35.4	55.6

Note: Definitions of the indices is contained in the appendix. The Generalized Entropy index, I , is assessed with $c=0$. The Polarization Index, P , is the ratio of between-country variation relative to total variation for the three major crops. The entropy measures for rice and maize are weighted by planted area. Due to a significant number of missing values for area data, we assume equal weights in calculating the yield variation in soybean.

Figure 3 further plots the spatial variations in yield for the three major crops over the whole period. It is apparent that crop yields have not become convergent over the years. The spatial variation in maize yield has even increased. Smallholder farmers are the major producers for rice and maize. Maize production relies primarily on rainfall while rice production increasingly depends upon irrigation. Soybean yields seem less variable because the production scale/systems

are more homogeneous, e.g. more commercial farmers, and fewer small-scale and subsistence producers than for rice and maize. In order to better check the robustness of this finding, we calculate rice yield variability at municipal level in Brazil for the period of 1975-1995.

Figure 3--Spatial variability of rice, maize and soybean yields in LAC



The data set includes more than four thousand observations for each year. As shown in Figure 4, rice yields have become more spatially variable within Brazil, driven by the large increase in the spatial variability of rainfed rice systems. The large and persistent spatial yield variability in rainfed rice production suggests there may be still be large payoffs to improving the flow of and access to new rainfed rice technologies across regions in Brazil. Uncovering the causes of this large variation might provide information that is useful in helping the less productive areas to catch up.

4. UNDERLYING CAUSES

To explain the observed patterns of yield variability, we propose three hypotheses. The first hypothesis is that agricultural R&D in the past several decades has been biased toward generating technologies for use in more favorable production environments, e.g., areas with better access to reliable water supplies. The efficacy of many agricultural technologies is often

highly location specific. For example, a large part of agricultural R&D is aimed at ameliorating site specific constraints to crop production – for example, increasing the frost, drought, or water-logging tolerance of plants, or changing the susceptibility of crops and animals to different pests and diseases. A salient feature of agricultural R&D is that it has favored irrigated regions where scale effects are more pronounced than in rainfed areas. The potential for agricultural R&D spillover is greater for the relatively more homogenous irrigated areas than for the agro-ecologically heterogeneous rainfed areas. Complex aspects of agroecological specificity may inhibit technology spillover to less-favored production areas, and therefore reduce the potential payoffs to research investment. For these reasons, agricultural R&D systems generally prefer research agendas related to broad homogenous regions (Alston 2002). However, technologies developed for irrigated regions are generally not well-suited to rainfed areas having more erratic water inputs.

Taking rice as an example, an estimated 275 new varieties have been released in LAC over the past three decades. About 90 percent of those varieties were targeted to flooded production environments (Sanint and Wood 1998).² As shown in Table 2, the area of modern varieties planted in irrigated regions has increased from zero to over three million hectares. In contrast, the area devoted to modern varieties in rainfed systems shows little increase. Average yields in irrigated regions rose from 2.8 tonne per hectare in the mid 1960s to 4.4 t ha⁻¹ in the mid 1990s, while average yields in rainfed regions have changed little over four decades.

² Flooded areas include irrigated and rainfed wetland areas.

Table 2--Rice production in irrigated and rainfed areas in LAC

		1967	1981	1989	1995
Irrigated					
Area		1,573.1	2,470.9	3,248.3	3,802.8
	MSV	-	1,546.5	2,801.4	3,340.3
	Trad.	1,573.1	924.4	446.8	462.4
Production		4,436.2	9,566.7	14,218.5	16,890.7
	MSV	-	6,281.5	12,490.7	15,201.9
	Trad.	4,436.2	3,285.3	1,727.8	1,693.0
Yield		2.8	3.9	4.4	4.4
	MSV	-	4.1	4.5	4.6
	Trad.	2.8	3.6	3.9	3.7
Rainfed					
Area		4,258.1	5,785.0	4,427.4	3,048.5
	MSV	-	499.0	580.3	675.3
	Trad.	4,258.1	5,285.9	3,847.1	2,373.2
Production		5,945.2	6,160.7	5,610.3	4,190.2
	MSV	-	556.9	1,287.0	1,509.4
	Trad.	5,945.2	5,607.3	4,323.4	2,680.8
Yield		1.4	1.1	1.3	1.4
	MSV	-	1.1	2.2	2.2
	Trad.	1.4	1.1	1.1	1.1
Totals					
	Area	5,831.2	8,255.9	7,675.7	6,851.2
	Production	10,381.7	15,727.4	19,828.8	21,100.9
	Yield	1.8	1.9	2.6	3.1

Note: personal communications from Luis Roberto Sanint. MSV stands for modern semidwarf varieties and is equivalent to high yielding varieties (HYVs).

Modern rice varieties now account for around 98 percent of all rice production in irrigated area and one third of rice production in rainfed areas (Table 3).

Table 3--Share of modern semi-dwarf rice varieties in rice production and area

Production System	Percentage in production				Percentage in area			
	1965	1981	1989	1995	1965	1981	1989	1995
Irrigated	0.0	79.3	88.1	98.3	0.0	76.4	84.7	97.6
Mechanized rainfed	0.0	6.9	13.3	24.7	0.0	5.8	10.3	18.0
Traditional rainfed	0.0	30.0	30.0	30.0	0.0	26.0	28.2	31.2
Total LAC	0.0	49.9	67.5	80.3	0.0	28.2	43.6	58.8

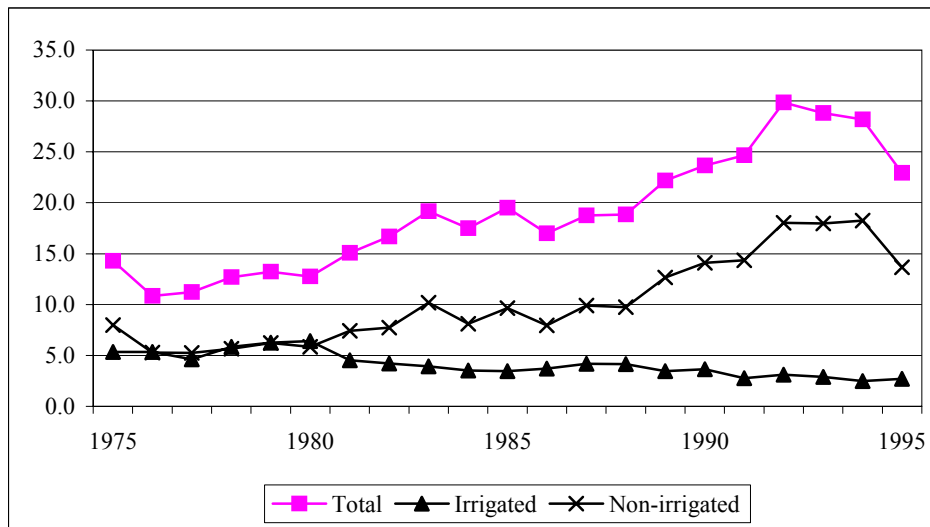
Source: Sanint and Wood (1998, p.406).

The difference in yield between traditional and modern varieties as well as the more rapid adoption of modern varieties in irrigated areas may thus be contributing to the observed increase in yield variation in LAC. We again use the Brazil municipio data to empirically test this hypothesis. Table 4 shows the mean and dispersion of rice yield in Brazil on average and for irrigated and non-irrigated areas, while Figure 4 plots the spatial variability for total, irrigated, and rainfed areas, respectively.

Table 4--Rice yield and dispersion in Brazil

Year	Average	Irrigated	Rainfed	Between variation/total variation
1975				
Mean (tonne/hectare)	1.5	3.5	1.2	
Variation	14.3	5.3	8.0	46.3
	(11.1, 16.9)	(3.6, 7.0)	(5.7, 9.9)	(32.9, 53.3)
1995				
Mean (tonne/hectare)	2.6	4.8	1.7	
Variation	22.9	2.7	13.7	53.9
	(21.8, 25.7)	(1.8, 3.4)	(9.1, 19.4)	(37.7, 76.1)
Changes in dispersion	8.6	-2.6	5.7	7.7
	(6.2, 11.4)	(-4.1, -0.2)	(2.6, 9.9)	

Note: Calculated by authors using the method developed by Biewen (2002). The figures in parentheses are 95% confidence intervals with 100 bootstrap replications.

Figure 4--Spatial variability of rice yields in Brazil

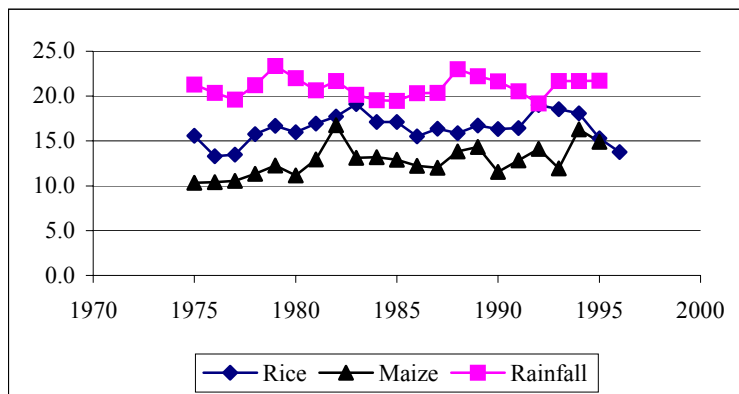
Rice yields in irrigated areas increased from 3.5 to 4.8 t ha⁻¹ over the period 1975-1995, while in rainfed areas yields reached only 1.7 t ha⁻¹ by 1995. The entropy index of yield dispersion in irrigated area has declined from 5.3 to 2.7, while in rainfed areas it has increased from 8.0 to 13.7. As shown in the last column of Table 4, all the changes are statistically significant at the 95% confidence level. This is consistent with the maize dispersion story for LAC as a whole shown in Table 1. Moreover, the yield spread between irrigated and rainfed areas has widened. The percentage share of total variation explained by variation between irrigated and rainfed area yields increased from 46.3 to 53.9. The findings seem to support our first hypothesis.

Our second hypothesis is related to weather variability. Agricultural production systems are intrinsically location specific and clearly a contributing factor to the spatial differences among yields is the relative resource endowment among locations, particularly for low-input production systems. The quality of these local resources can also change over time, and perhaps exacerbate variability among locations. For example, variability of and change in soil quality are considered to be key determinants of the productivity of LAC, but reliable regional data on the

spatial patterns of change in soil quality do not exist. However, we do have access to long term information on another resource, rainfall. There is growing evidence from some parts of the world about long-term trends and increased variability in agricultural production as a consequence of global warming and increased El Nino Southern Oscillation (ENSO) activity (see, for example, Dai *et al* 1997 and Adams et al 1999). We therefore examine whether these phenomena are observable over the period of our production data using a rainfall time series dataset covering the LAC region.

The Climate Research Unit of University of East Anglia constructed a 0.5 degree latitude/longitude gridded dataset of monthly rainfall data over the whole world for the period 1901-1996 (New, Hulme, and Jones 2000). From these gridded data, we calculate the annual rainfall for the sub-national geopolitical regions (departments) in LAC from 1975-95. Figure 5 plots regional variability in annual rainfall and the yields of rice and maize for the whole period.

Figure 5--Spatial variability in rainfall and the yields of rice and maize in LAC



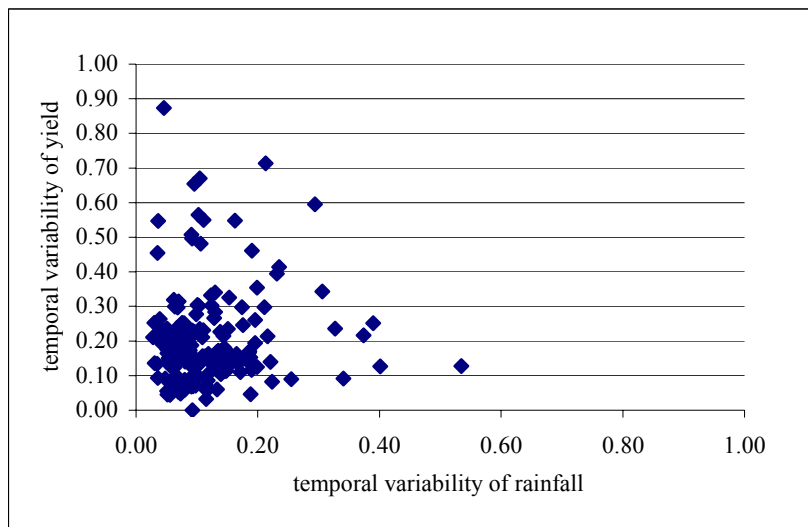
Firstly, of note, is that rainfall is more variable than yield, and that aggregate rice yields (including both irrigated and rainfed production) are more variable than maize yields. Second, there is a small but statistically significant downward trend in annual rainfall (a slope of -1.40 mm per year, with a t value of -4.47, controlling for fixed effects across departments). Third, in

the case of rice, the association between rice yield and rainfall variability is very weak (correlation coefficient -0.02). Rice and rainfall indices do not show co-movement for most years, nor does there appear to be a systematic divergence or convergence of the two series. Fourth, in the case of maize, the association of yield with rainfall variability appears much stronger (correlation coefficient 0.18), and maize yield variability appears to have increased over time. These findings are congruent with the changes in maize and rice yield distributions between 1975-77 and 1993-95 observed in Figure 1. The higher rice yield variability reflects the aggregation of both rainfed and irrigated rice systems in our regional database. Based on our Brazil analysis using data disaggregated by systems, we assume that most of the rice yield variability is attributable to rainfed rice production. The apparent growth in maize yield variability suggests that while significant progress has been made in the development and adoption of higher yielding maize varieties in many parts of LAC, there are large and pockets of subsistence production that still rely upon low yielding traditional varieties.

The finding of a downward trend in LAC annual rainfall over the 1975-95 period supports the hypothesis that changing weather patterns may have contributed to increasing yield divergence, since drier conditions are associated with lower yields in rainfed systems. To corroborate this finding we examined other literature on LAC rainfall trends. Dai *et al* (1997), in their study of global land precipitation variation between 1900 and 1988 also report an observed decline in land precipitation over the tropics in the 1970s and 1980s using a different data source. And while the IPCC assessment of regional impacts of climate change (1998) reported generally increasing rainfall trends in South America, east of the Andes, over the period 1901-95, annual rainfall time plots for Latin America and for the Caribbean region in the same report do suggest steady or declining average annual rainfall trends during the 1975-95 period.

For a particular region, however, there are likely more covariate patterns of variability of rainfall and yield (Walker, 1989). To check this, we further calculate temporal variability in rainfall and yield for the whole period (1975-1995) in each region.³ Figures 6 and 7 show these temporal variances in rainfall and yields of rice and maize, respectively. Figure 6 does not exhibit any apparent patterns between rainfall variability and yield variability in rice in the regions considered. In fact, the R^2 value is less than 0.1.

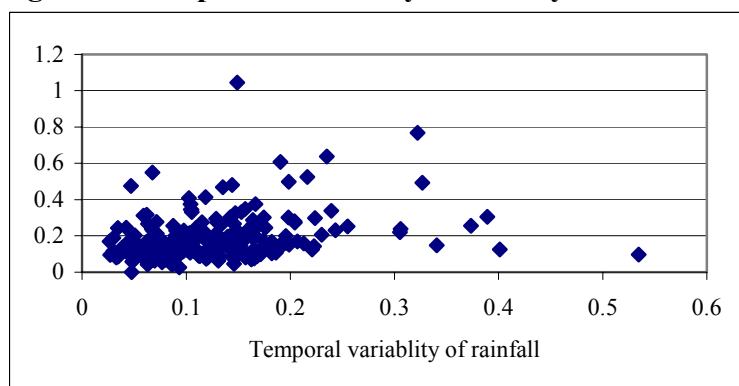
Figure 6--Temporal variability in rice yield and rainfall



Note: Rice yield is de-trended to remove the effect of technology change on temporal variability. In total, there are 176 observations at the department level.

However, Figure 7 exhibits some positive correlation when excluding several outliers, perhaps reflecting the fact that a much greater share of maize is produced under rainfed conditions and in other types of less-favored environments than is rice.

³ Because there is an upward trend in rice yields due to technology progress, we removed the time trend when calculating rice yield variability. Soybean and maize yields were treated in a similar way.

Figure 7--Temporal variability in maize yield and rainfall

Finally, agricultural production technologies generated in one country often spillover to other countries with similar agroecological conditions if regional or local capacity to adapt and disseminate the technologies is available. However, the capacities of national research and extension systems differ widely among countries. Many countries do not have enough research capacity to adapt the modern varieties to local needs, and many national agricultural research and development systems are experiencing increasing budget stringency (Alston *et al* 1998; Pardey *et al*, in process). And in addition to research and extension capacity, adopting new crop varieties requires a well-functioning sector to produce and market new technical inputs for the modern varieties and a literate labor force to use the new knowledge and technology effectively (Ruttan 2001). Therefore, ability to modify and adapt new technologies can differ significantly among countries. The differences in research capacity and institutions and human resource endowment may create barriers to country-to-country spillovers. This is our third hypothesis to test.

To capture the between-country variance in yield, we apply Shorrocks' decomposition method to quantify the relative contributions of *between-country* and *within-country* to overall spatial inequality. As shown in the last three columns in Table 1, the between-country variation in rice yield accounts for a large share of total variation, but that share has generally declined

over the whole period. For maize, the between-country contribution has been lower but more variable. Between-country variation in soybean yield has consistently contributed over half of the total variation. The finding calls for a better understanding of spillovers among countries. There seems to remain significant scope for improving the flow of information about new technologies, as well as flow of the technologies themselves among LAC countries.

5. CONCLUSIONS

We have examined the spatial and temporal patterns of variation in the yield of rice, maize, and soybean in LAC using sub-national data. Our analyses show that yields of three major crops in the LAC region have not converged over time. The yield dispersion for maize has even increased. Thus possible influences of technology convergence over time, have been counteracted by larger, yield diverging effects. We then explored some possible sources of such divergence: 1) divergence arising from technology bias to the more-favored production environments; 2) divergence arising from changing rainfall patterns; and 3) divergence arising from country-specific factors.

The large difference in yield between irrigated and rainfed areas does appear to play a significant role, particularly in the case of rice. Although irrigation may be effective in reducing yield variability in those areas where irrigation replaces rainfed production, it has lead to greater variability across locations since a significant share of LAC production remains in rainfed and mixed rainfed-irrigated farming systems. It appears that in LAC, as in the rest of the world, agricultural research has been biased against generating technologies applicable to less-favored production environments. And poorer farmers on poorer land are often less willing or able to adopt improved technologies if they involve larger costs or risks. With growing evidence on the

higher potential payoffs to investment in marginal lands, there is now much debate about the growth as well as the equity consequences of such historic biases (Fan, Hazell and Thorat 1999). The spatial variation in yield for soybean is much smaller than that for rice and maize, largely because soybean is grown as an industrial crop rather than as a food staple in LAC, often in larger-scale farm enterprises where external inputs such as water and fertilizer are used much more intensively to increase and stabilize yields. It seems that technology spillovers among such commercially-oriented farmers may be more efficient than those among smallholders. Therefore, in addition to developing technologies that can be adopted by and are more profitable for farmers in less-favored production environments, fostering improved diffusion of suitable existing technology among small-scale farmers also deserves high attention, and may often be more cost-effective.

Our empirical results also provide some support for the second hypothesis concerning linkages between observed increases in yield diversity and changing rainfall patterns, as the rainfall data show a small (about 1.4 mm yr^{-1}) downward trend in annual rainfall. But comparison with longer-term rainfall data suggests that this may be part of a short-term cycle. Yield variability in maize, a crop grown widely under rainfed, subsistence conditions in LAC, has increased over time and exhibits a greater correlation with rainfall variability than does rice, a crop grown extensively under irrigated (commercially-oriented) conditions. Finally, using an inequality decomposition method, we estimated the contribution of between-country variation to overall spatial inequality and found that the between-country component is rather large – though declining in the case of rice - suggesting the existence of persistent barriers to country-to-country spillovers of technology. These results should be of concern to those, often smaller, countries where yield growth rates appear to be falling behind LAC yield-growth leaders (e.g., many parts

of Argentina, Brazil and Mexico). They also send a message to the international, regional and sub-regional agricultural technology research and development community who clearly still face many challenges in achieving their goals of facilitating and accelerating the flow of improved technologies across the region, particularly those technologies targeted to smallholders.

While LAC as a region is well endowed with water, the increasing trend of urbanization and industrialization will likely limit the expansion of water use for irrigation in many areas, and reduce future growth potential of irrigated agriculture and the stabilization of crop yields. Therefore, improving the water use efficiency of crops remains an important research objective. But a central challenge to the research and development community is to make agricultural production more profitable and competitive by providing technology that can sustainably reduce unit production costs in less favored (non-irrigated) areas where the majority of LAC's farmers, and a disproportionate share of its rural poor, are to be found. It appears that significant potential may still remain for large payoffs to the continued strengthening of regional and national information, institutional, and physical capacities to promote the spillover of new knowledge and technologies and to make them more accessible to all farmers throughout the region.

REFERENCES

- Adams, R., C. Chen, B. McCarl and R. Weiher. 1999. The economic consequences of ENSO events for agriculture. *Climate Research*. 13(3): 165-172.
- Alston, J. M. 2002. Spillovers. *Australian Journal of Agricultural Economics*, 46 (3): 315-346.
- Alston, J.M., B.J. Craig, and J. Roseboom. 1998. Financing agricultural research: international investment patterns and policy perspective. *World Development* 26: 1057-1071.
- Alston, J.M., P. Pardey, S. Wood, and L. You. 2000, Strategic technology investments for lac agriculture: A framework for evaluating the local and spillover effects of R&D. Paper prepared as part of an IDB-sponsored project, Policies on Food, Agriculture and the Environment, and Indicators and Priorities for Agriculture Research. Washington, D.C.: International Food Policy Research Institute.
- Biewen, M. 2002. Bootstrap inference for inequality, mobility and poverty measurement. *Journal of Econometrics* 108: 317 – 342.
- Borlaug, N. 1970. The green revolution, peace and humanity. Nobel Peace Prize Lecture. Nobel Peace Prize. Nobel Museum. Stockholm. <http://www.nobel.se/peace/laureates/1970/borlaug-lecture.html>
- Cassman, K., A. Dobermann, D. Walters, and H. Yang. 2003. Meeting cereal demand while protecting natural resources and improving environmental quality. *Ann. Rev. Environ. Resourc.* 28: 315-58.
- Dai, A., I.Y. Fung, and A. D. Del Genio. 1997. Surface observed global land precipitation variations during 1900-88. *Journal of Climate* 10: 2943-2962.
- Evenson, R.E. and D. Gollin, eds. 2003. Crop variety improvement and its effect on productivity: The impact of international agricultural research. Wallingford, UK: CAB International.
- Fan, S., P. Hazell, and S. Thorat. 1999. *Government spending, agricultural growth and poverty: An analysis of interlinkages in rural India*. Research Report 110. Washington, DC: International Food Policy Research Institute.
- FAOSTAT. 2002, Food and Agriculture Organization of the United Nations, Statistical Databases, Accessed in August 2004 at <http://faostat.fao.org/default.html>.
- Griliches, Z. 1957. Hybrid corn: An exploration in the economics of technological change. *Econometrica* 25 (4): 501-522.

Grossman, G.M. and E. Helpman. 1995. *Innovation and growth in the global economy*. Cambridge, MA: The MIT Press.

Hazell, P. 1989. Changing patterns of variability in world cereal production. In *Variability in grain yields*, ed. Andersen, J.R. and P. Hazell. Baltimore, MD: The Johns Hopkins University Press.

Hazell, P. and C. Ramasamy. 1991. *The green revolution reconsidered: The impact of high-yielding rice varieties in south India*. Baltimore and London: The John Hopkins University Press.

Intergovernmental Panel on Climate Change (IPCC). 1998. *The regional impacts of climate change: an assessment of vulnerability – IPCC special report*. Cambridge University Press. <http://www.grida.no/climate/ipcc/regional/index.htm>.

Mills, Jeffrey A. and Sourushe Zandvakili. 1997. Statistical inference via bootstrapping for measures of inequality. *Journal of Applied Econometrics* 12 (2): 133-150.

New, M., M. Hulme, and P. Jones. 2000. Representing twentieth century space-time climate variability II: Development of 1901-1996 monthly grids of terrestrial surface climate. *Journal of Climate* 13: 2217-2238.

Pardey, P.G., J.M. Alston, C. Chan-Kang, E. Castello Magalhães, and S.A. Vosti. 2004. *Assessing and attributing the benefits from varietal improvement research in Brazil*. IFPRI Research Report No 136. Washington D.C.: International Food Policy Research Institute. Forthcoming.

Pardey, P.G., J.M. Alston, and R.R. Piggott. Forthcoming. *Agricultural R&D policy in the developing world*. Washington D.C.: International Food Policy Research Institute.

Pardey, P., C. Chan-Kang, and S. Wood. 2000. *The changing structure of Latin American agriculture: A quantitative regional response*. Paper prepared for the project, *Prioritizing Public Investments for Sustaining Growth in Latin American and Caribbean Agriculture*. Washington, D.C.: International Food Policy Research Institute.

Rosenberg, N. 1982. *Inside the black box: Technology and economics*. Cambridge, UK: Cambridge University Press.

Wood, S. and P. Pardey. 1998. Agroecological aspects of evaluating agricultural R&D. *Agricultural Systems* 57 (1): 13-41, May.

Pender, J. and S.J. Scherr. 1999. *Organizational development and natural resource management: evidence from central Honduras*. EPTD Discussion paper No. 49. Washington, D.C.: International Food Policy Research Institute.

Ruttan, V. 2002. *Technology, growth, and development: An induced innovation perspective*. New York: Oxford University Press.

Sanint, L.R. and S. Wood. 1998. Impact of rice research in Latin America and the Caribbean during the past three decades. In *Impact of rice research*, ed. Pingali, P.L. and M. Hossain. Thailand Development Research Institute and International Rice Research Institute.

Shorrocks, A. 1980. The class of additively decomposable inequality measures. *Econometrica*, 48: 613-25.

Shorrocks, A. 1984. Inequality decomposition by population subgroup. *Econometrica*, 52: 1369-85.

Walker, T. S. 1989. High-yielding varieties and variability in sorghum and pearl millet production in India. In *Variability in grain yields*, ed. Anderson, J.R. and P.B.R. Hazell. Baltimore: The Johns Hopkins University Press.

Wan, H. Y., Jr. 2004. *Economic development in a globalized environment*, Boston, Mass: Kluwer Academic Publishers.

Zhang, X. and R. Kanbur. 2001. What difference do polarisation measures make?' *Journal of Development Studies* 37 (3), 85-98.

APPENDICES

APPENDIX 1--THE GENERALIZED ENTROPY (GE) MEASURE (SHORROCKS, 1980 AND 1984) CAN BE WRITTEN AS:

$$I(y) = \begin{cases} \sum_{i=1}^K f(y_i) \left\{ \left(\frac{y_i}{\mu} \right)^c - 1 \right\} & c \neq 0,1 \\ \sum_{i=1}^K f(y_i) \left(\frac{y_i}{\mu} \right) \log \left(\frac{y_i}{\mu} \right) & c = 1 \\ \sum_{i=1}^K f(y_i) \log \left(\frac{\mu}{y_i} \right) & c = 0 \end{cases} \quad (1)$$

In the above equation, y_i is yield in the i^{th} region, μ is the total sample mean, $f(y_i)$ is the area share of the i^{th} region in the total planting area and K is the number of regions.

For K exogenously given countries indexed by g , the overall GE measure can be expressed as:

$$I(y) = \sum_g w_g I_g + I(\mu_1 e_1, \dots, \mu_K e_K) \quad (2)$$

$$\text{where } w_g = \begin{cases} f_g \left(\frac{\mu_g}{\mu} \right)^c & c \neq 0,1 \\ f_g \left(\frac{\mu_g}{\mu} \right) & c = 1 \\ f_g & c = 0 \end{cases}$$

where I_g is inequality in the g^{th} country, μ_g is the mean of the g^{th} country and e_g is a vector of 1's of length n_g , where n_g is the planting area of the g^{th} country. If n is the total planting area of all countries, then $f_g = \frac{n_g}{n}$ represents the share of the g^{th} country's area in the total planting area. The first term on the right side of (2) represents the within-group inequality. $\frac{w_g I_g}{I(y)} * 100$ is the g^{th} group's contribution to total inequality. The second term is the between-group (or inter-group) component of total inequality.

Following Zhang and Kanbur (2001), we define the polarization index, P , as:

$$P = \text{between-group inequality} / \text{total inequality} \quad (3)$$

EPTD DISCUSSION PAPERS

LIST OF EPTD DISCUSSION PAPERS

- 01 Sustainable Agricultural Development Strategies in Fragile Lands, by Sara J. Scherr and Peter B.R. Hazell, June 1994.
 - 02 Confronting the Environmental Consequences of the Green Revolution in Asia, by Prabhu L. Pingali and Mark W. Rosegrant, August 1994.
 - 03 Infrastructure and Technology Constraints to Agricultural Development in the Humid and Subhumid Tropics of Africa, by Dunstan S.C. Spencer, August 1994.
 - 04 Water Markets in Pakistan: Participation and Productivity, by Ruth Meinzen-Dick and Martha Sullins, September 1994.
 - 05 The Impact of Technical Change in Agriculture on Human Fertility: District-level Evidence From India, by Stephen A. Vosti, Julie Witcover, and Michael Lipton, October 1994.
 - 06 Reforming Water Allocation Policy through Markets in Tradable Water Rights: Lessons from Chile, Mexico, and California, by Mark W. Rosegrant and Renato Gazri S, October 1994.
 - 07 Total Factor Productivity and Sources of Long-Term Growth in Indian Agriculture, by Mark W. Rosegrant and Robert E. Evenson, April 1995.
 - 08 Farm-Nonfarm Growth Linkages in Zambia, by Peter B.R. Hazell and Behjat Hoijadi, April 1995.
 - 09 Livestock and Deforestation in Central America in the 1980s and 1990s: A Policy Perspective, by David Kaimowitz (Interamerican Institute for Cooperation on Agriculture. June 1995.
 - 10 Effects of the Structural Adjustment Program on Agricultural Production and Resource Use in Egypt, by Peter B.R. Hazell, Nicostrato Perez, Gamal Siam, and Ibrahim Soliman, August 1995.
 - 11 Local Organizations for Natural Resource Management: Lessons from Theoretical and Empirical Literature, by Lise Nordvig Rasmussen and Ruth Meinzen-Dick, August 1995.
-

EPTD DISCUSSION PAPERS

- 12 Quality-Equivalent and Cost-Adjusted Measurement of International Competitiveness in Japanese Rice Markets, by Shoichi Ito, Mark W. Rosegrant, and Mercedita C. Agcaoili-Sombilla, August 1995.
 - 13 Role of Inputs, Institutions, and Technical Innovations in Stimulating Growth in Chinese Agriculture, by Shenggen Fan and Philip G. Pardey, September 1995.
 - 14 Investments in African Agricultural Research, by Philip G. Pardey, Johannes Roseboom, and Nienke Beintema, October 1995.
 - 15 Role of Terms of Trade in Indian Agricultural Growth: A National and State Level Analysis, by Peter B.R. Hazell, V.N. Misra, and Behjat Hoiijati, December 1995.
 - 16 Policies and Markets for Non-Timber Tree Products, by Peter A. Dewees and Sara J. Scherr, March 1996.
 - 17 Determinants of Farmers' Indigenous Soil and Water Conservation Investments in India's Semi-Arid Tropics, by John Pender and John Kerr, August 1996.
 - 18 Summary of a Productive Partnership: The Benefits from U.S. Participation in the CGIAR, by Philip G. Pardey, Julian M. Alston, Jason E. Christian, and Shenggen Fan, October 1996.
 - 19 Crop Genetic Resource Policy: Towards a Research Agenda, by Brian D. Wright, October 1996.
 - 20 Sustainable Development of Rainfed Agriculture in India, by John M. Kerr, November 1996.
 - 21 Impact of Market and Population Pressure on Production, Incomes and Natural Resources in the Dryland Savannas of West Africa: Bioeconomic Modeling at the Village Level, by Bruno Barbier, November 1996.
 - 22 Why Do Projections on China's Future Food Supply and Demand Differ? by Shenggen Fan and Mercedita Agcaoili-Sombilla, March 1997.
 - 23 Agroecological Aspects of Evaluating Agricultural R&D, by Stanley Wood and Philip G. Pardey, March 1997.
 - 24 Population Pressure, Land Tenure, and Tree Resource Management in Uganda, by Frank Place and Keijiro Otsuka, March 1997.
-

EPTD DISCUSSION PAPERS

- 25 Should India Invest More in Less-favored Areas? by Shenggen Fan and Peter Hazell, April 1997.
 - 26 Population Pressure and the Microeconomy of Land Management in Hills and Mountains of Developing Countries, by Scott R. Templeton and Sara J. Scherr, April 1997.
 - 27 Population Land Tenure and Natural Resource Management: The Case of Customary Land Area in Malawi, by Frank Place and Keijiro Otsuka, April 1997.
 - 28 Water Resources Development in Africa: A Review and Synthesis of Issues, Potentials, and Strategies for the Future, by Mark W. Rosegrant and Nicostrato D. Perez, September 1997.
 - 29 Financing Agricultural R&D in Rich Countries: What's Happening and Why? by Julian M. Alston, Philip G. Pardey, and Vincent H. Smith, September 1997.
 - 30 How Fast Have China's Agricultural Production and Productivity Really Been Growing? by Shenggen Fan, September 1997.
 - 31 Does Land Tenure Insecurity Discourage Tree Planting? Evolution of Customary Land Tenure and Agroforestry Management in Sumatra, by Keijiro Otsuka, S. Suyanto, and Thomas P. Tomich, December 1997.
 - 32 Natural Resource Management in the Hillsides of Honduras: Bioeconomic Modeling at the Micro-Watershed Level, by Bruno Barbier and Gilles Bergeron, January 1998.
 - 33 Government Spending, Growth, and Poverty: An Analysis of Interlinkages in Rural India, by Shenggen Fan, Peter Hazell, and Sukhadeo Thorat, March 1998. Revised December 1998.
 - 34 Coalitions and the Organization of Multiple-Stakeholder Action: A Case Study of Agricultural Research and Extension in Rajasthan, India, by Ruth Alsop, April 1998.
 - 35 Dynamics in the Creation and Depreciation of Knowledge and the Returns to Research, by Julian Alston, Barbara Craig, and Philip Pardey, July, 1998.
 - 36 Educating Agricultural Researchers: A Review of the Role of African Universities, by Nienke M. Beintema, Philip G. Pardey, and Johannes Roseboom, August 1998.
-

EPTD DISCUSSION PAPERS

- 37 The Changing Organizational Basis of African Agricultural Research, by Johannes Roseboom, Philip G. Pardey, and Nienke M. Beintema, November 1998.
 - 38 Research Returns Redux: A Meta-Analysis of the Returns to Agricultural R&D, by Julian M. Alston, Michele C. Marra, Philip G. Pardey, and T.J. Wyatt, November 1998.
 - 39 Technological Change, Technical and Allocative Efficiency in Chinese Agriculture: The Case of Rice Production in Jiangsu, by Shenggen Fan, January 1999.
 - 40 The Substance of Interaction: Design and Policy Implications of NGO-Government Projects in India, by Ruth Alsop with Ved Arya, January 1999.
 - 41 Strategies for Sustainable Agricultural Development in the East African Highlands, by John Pender, Frank Place, and Simeon Ehui, April 1999.
 - 42 Cost Aspects of African Agricultural Research, by Philip G. Pardey, Johannes Roseboom, Nienke M. Beintema, and Connie Chan-Kang, April 1999.
 - 43 Are Returns to Public Investment Lower in Less-favored Rural Areas? An Empirical Analysis of India, by Shenggen Fan and Peter Hazell, May 1999.
 - 44 Spatial Aspects of the Design and Targeting of Agricultural Development Strategies, by Stanley Wood, Kate Sebastian, Freddy Nachtergaele, Daniel Nielsen, and Aiguo Dai, May 1999.
 - 45 Pathways of Development in the Hillsides of Honduras: Causes and Implications for Agricultural Production, Poverty, and Sustainable Resource Use, by John Pender, Sara J. Scherr, and Guadalupe Durón, May 1999.
 - 46 Determinants of Land Use Change: Evidence from a Community Study in Honduras, by Gilles Bergeron and John Pender, July 1999.
 - 47 Impact on Food Security and Rural Development of Reallocating Water from Agriculture, by Mark W. Rosegrant and Claudia Ringler, August 1999.
 - 48 Rural Population Growth, Agricultural Change and Natural Resource Management in Developing Countries: A Review of Hypotheses and Some Evidence from Honduras, by John Pender, August 1999.
-

EPTD DISCUSSION PAPERS

- 49 Organizational Development and Natural Resource Management: Evidence from Central Honduras, by John Pender and Sara J. Scherr, November 1999.
 - 50 Estimating Crop-Specific Production Technologies in Chinese Agriculture: A Generalized Maximum Entropy Approach, by Xiaobo Zhang and Shenggen Fan, September 1999.
 - 51 Dynamic Implications of Patenting for Crop Genetic Resources, by Bonwoo Koo and Brian D. Wright, October 1999.
 - 52 Costing the Ex Situ Conservation of Genetic Resources: Maize and Wheat at CIMMYT, by Philip G. Pardey, Bonwoo Koo, Brian D. Wright, M. Eric van Dusen, Bent Skovmand, and Suketoshi Taba, October 1999.
 - 53 Past and Future Sources of Growth for China, by Shenggen Fan, Xiaobo Zhang, and Sherman Robinson, October 1999.
 - 54 The Timing of Evaluation of Genebank Accessions and the Effects of Biotechnology, by Bonwoo Koo and Brian D. Wright, October 1999.
 - 55 New Approaches to Crop Yield Insurance in Developing Countries, by Jerry Skees, Peter Hazell, and Mario Miranda, November 1999.
 - 56 Impact of Agricultural Research on Poverty Alleviation: Conceptual Framework with Illustrations from the Literature, by John Kerr and Shashi Kolavalli, December 1999.
 - 57 Could Futures Markets Help Growers Better Manage Coffee Price Risks in Costa Rica? by Peter Hazell, January 2000.
 - 58 Industrialization, Urbanization, and Land Use in China, by Xiaobo Zhang, Tim Mount, and Richard Boisvert, January 2000.
 - 59 Water Rights and Multiple Water Uses: Framework and Application to Kirindi Oya Irrigation System, Sri Lanka, by Ruth Meinzen-Dick and Margaretha Bakker, March 2000.
 - 60 Community natural Resource Management: The Case of Woodlots in Northern Ethiopia, by Berhanu Gebremedhin, John Pender and Girmay Tesfaye, April 2000.
-

EPTD DISCUSSION PAPERS

- 61 What Affects Organization and Collective Action for Managing Resources? Evidence from Canal Irrigation Systems in India, by Ruth Meinzen-Dick, K.V. Raju, and Ashok Gulati, June 2000.
 - 62 The Effects of the U.S. Plant Variety Protection Act on Wheat Genetic Improvement, by Julian M. Alston and Raymond J. Venner, May 2000.
 - 63 Integrated Economic-Hydrologic Water Modeling at the Basin Scale: The Maipo River Basin, by M. W. Rosegrant, C. Ringler, DC McKinney, X. Cai, A. Keller, and G. Donoso, May 2000.
 - 64 Irrigation and Water Resources in Latin America and the Caribbean: Challenges and Strategies, by Claudia Ringler, Mark W. Rosegrant, and Michael S. Paisner, June 2000.
 - 65 The Role of Trees for Sustainable Management of Less-favored Lands: The Case of Eucalyptus in Ethiopia, by Pamela Jagger & John Pender, June 2000.
 - 66 Growth and Poverty in Rural China: The Role of Public Investments, by Shenggen Fan, Linxiu Zhang, and Xiaobo Zhang, June 2000.
 - 67 Small-Scale Farms in the Western Brazilian Amazon: Can They Benefit from Carbon Trade? by Chantal Carpentier, Steve Vosti, and Julie Witcover, September 2000.
 - 68 An Evaluation of Dryland Watershed Development Projects in India, by John Kerr, Ganesh Pangare, Vasudha Lokur Pangare, and P.J. George, October 2000.
 - 69 Consumption Effects of Genetic Modification: What If Consumers Are Right? by Konstantinos Giannakas and Murray Fulton, November 2000.
 - 70 South-North Trade, Intellectual Property Jurisdictions, and Freedom to Operate in Agricultural Research on Staple Crops, by Eran Binenbaum, Carol Nottenburg, Philip G. Pardey, Brian D. Wright, and Patricia Zambrano, December 2000.
 - 71 Public Investment and Regional Inequality in Rural China, by Xiaobo Zhang and Shenggen Fan, December 2000.
 - 72 Does Efficient Water Management Matter? Physical and Economic Efficiency of Water Use in the River Basin, by Ximing Cai, Claudia Ringler, and Mark W. Rosegrant, March 2001.
-

EPTD DISCUSSION PAPERS

- 73 Monitoring Systems for Managing Natural Resources: Economics, Indicators and Environmental Externalities in a Costa Rican Watershed, by Peter Hazell, Ujjayant Chakravorty, John Dixon, and Rafael Celis, March 2001.
- 74 Does Quaxi Matter to NonFarm Employment? by Xiaobo Zhang and Guo Li, June 2001.
- 75 The Effect of Environmental Variability on Livestock and Land-Use Management: The Borana Plateau, Southern Ethiopia, by Nancy McCarthy, Abdul Kamara, and Michael Kirk, June 2001.
- 76 Market Imperfections and Land Productivity in the Ethiopian Highlands, by Stein Holden, Bekele Shiferaw, and John Pender, August 2001.
- 77 Strategies for Sustainable Agricultural Development in the Ethiopian Highlands, by John Pender, Berhanu Gebremedhin, Samuel Benin, and Simeon Ehui, August 2001.
- 78 Managing Droughts in the Low-Rainfall Areas of the Middle East and North Africa: Policy Issues, by Peter Hazell, Peter Oram, Nabil Chaherli, September 2001.
- 79 Accessing Other People's Technology: Do Non-Profit Agencies Need It? How To Obtain It, by Carol Nottenburg, Philip G. Pardey, and Brian D. Wright, September 2001.
- 80 The Economics of Intellectual Property Rights Under Imperfect Enforcement: Developing Countries, Biotechnology, and the TRIPS Agreement, by Konstantinos Giannakas, September 2001.
- 81 Land Lease Markets and Agricultural Efficiency: Theory and Evidence from Ethiopia, by John Pender and Marcel Fafchamps, October 2001.
- 82 The Demand for Crop Genetic Resources: International Use of the U.S. National Plant Germplasm System, by M. Smale, K. Day-Rubenstein, A. Zohrabian, and T. Hodgkin, October 2001.
- 83 How Agricultural Research Affects Urban Poverty in Developing Countries: The Case of China, by Shenggen Fan, Cheng Fang, and Xiaobo Zhang, October 2001.
- 84 How Productive is Infrastructure? New Approach and Evidence From Rural India, by Xiaobo Zhang and Shenggen Fan, October 2001.
-

EPTD DISCUSSION PAPERS

- 85 Development Pathways and Land Management in Uganda: Causes and Implications, by John Pender, Pamela Jagger, Ephraim Nkonya, and Dick Sserunkuuma, December 2001.
 - 86 Sustainability Analysis for Irrigation Water Management: Concepts, Methodology, and Application to the Aral Sea Region, by Ximing Cai, Daene C. McKinney, and Mark W. Rosegrant, December 2001.
 - 87 The Payoffs to Agricultural Biotechnology: An Assessment of the Evidence, by Michele C. Marra, Philip G. Pardey, and Julian M. Alston, January 2002.
 - 88 Economics of Patenting a Research Tool, by Bonwoo Koo and Brian D. Wright, January 2002.
 - 89 Assessing the Impact of Agricultural Research On Poverty Using the Sustainable Livelihoods Framework, by Michelle Adato and Ruth Meinzen-Dick, March 2002.
 - 90 The Role of Rainfed Agriculture in the Future of Global Food Production, by Mark Rosegrant, Ximing Cai, Sarah Cline, and Naoko Nakagawa, March 2002.
 - 91 Why TVEs Have Contributed to Interregional Imbalances in China, by Junichi Ito, March 2002.
 - 92 Strategies for Stimulating Poverty Alleviating Growth in the Rural Nonfarm Economy in Developing Countries, by Steven Haggblade, Peter Hazell, and Thomas Reardon, July 2002.
 - 93 Local Governance and Public Goods Provisions in Rural China, by Xiaobo Zhang, Shenggen Fan, Linxiu Zhang, and Jikun Huang, July 2002.
 - 94 Agricultural Research and Urban Poverty in India, by Shenggen Fan, September 2002.
 - 95 Assessing and Attributing the Benefits from Varietal Improvement Research: Evidence from Embrapa, Brazil, by Philip G. Pardey, Julian M. Alston, Connie Chan-Kang, Eduardo C. Magalhães, and Stephen A. Vosti, August 2002.
 - 96 India's Plant Variety and Farmers' Rights Legislation: Potential Impact on Stakeholders Access to Genetic Resources, by Anitha Ramanna, January 2003.
 - 97 Maize in Eastern and Southern Africa: Seeds of Success in Retrospect, by Melinda Smale and Thom Jayne, January 2003.
-

EPTD DISCUSSION PAPERS

- 98 Alternative Growth Scenarios for Ugandan Coffee to 2020, by Liangzhi You and Simon Bolwig, February 2003.
 - 99 Public Spending in Developing Countries: Trends, Determination, and Impact, by Shenggen Fan and Neetha Rao, March 2003.
 - 100 The Economics of Generating and Maintaining Plant Variety Rights in China, by Bonwoo Koo, Philip G. Pardey, Keming Qian, and Yi Zhang, February 2003.
 - 101 Impacts of Programs and Organizations on the Adoption of Sustainable Land Management Technologies in Uganda, Pamela Jagger and John Pender, March 2003.
 - 102 Productivity and Land Enhancing Technologies in Northern Ethiopia: Health, Public Investments, and Sequential Adoption, Lire Ersado, Gregory Amacher, and Jeffrey Alwang, April 2003.
 - 103 Animal Health and the Role of Communities: An Example of Trypanosomiasis Control Options in Uganda, by Nancy McCarthy, John McDermott, and Paul Coleman, May 2003.
 - 104 Determinantes de Estrategias Comunitarias de Subsistencia y el uso de Prácticas Conservacionistas de Producción Agrícola en las Zonas de Ladera en Honduras, Hans G.P. Jansen, Angel Rodríguez, Amy Damon, y John Pender, Junio 2003.
 - 105 Determinants of Cereal Diversity in Communities and on Household Farms of the Northern Ethiopian Highlands, by Samuel Benin, Berhanu Gebremedhin, Melinda Smale, John Pender, and Simeon Ehui, June 2003.
 - 106 Demand for Rainfall-Based Index Insurance: A Case Study from Morocco, by Nancy McCarthy, July 2003.
 - 107 Woodlot Devolution in Northern Ethiopia: Opportunities for Empowerment, Smallholder Income Diversification, and Sustainable Land Management, by Pamela Jagger, John Pender, and Berhanu Gebremedhin, September 2003.
 - 108 Conservation Farming in Zambia, by Steven Haggblade and Gelsom Tembo, October 2003.
 - 109 National and International Agricultural Research and Rural Poverty: The Case of Rice Research in India and China, by Shenggen Fan, Connie Chan-Kang, Keming Qian, and K. Krishnaiah, September 2003.
-

EPTD DISCUSSION PAPERS

- 110 Rice Research, Technological Progress, and Impacts on the Poor: The Bangladesh Case (Summary Report), by Mahabub Hossain, David Lewis, Manik L. Bose, and Alamgir Chowdhury, October 2003.
 - 111 Impacts of Agricultural Research on Poverty: Findings of an Integrated Economic and Social Analysis, by Ruth Meinzen-Dick, Michelle Adato, Lawrence Haddad, and Peter Hazell, October 2003.
 - 112 An Integrated Economic and Social Analysis to Assess the Impact of Vegetable and Fishpond Technologies on Poverty in Rural Bangladesh, by Kelly Hallman, David Lewis, and Suraiya Begum, October 2003.
 - 113 Public-Private Partnerships in Agricultural Research: An Analysis of Challenges Facing Industry and the Consultative Group on International Agricultural Research, by David J. Spielman and Klaus von Grebmer, January 2004.
 - 114 The Emergence and Spreading of an Improved Traditional Soil and Water Conservation Practice in Burkina Faso, by Daniel Kaboré and Chris Reij, February 2004.
 - 115 Improved Fallows in Kenya: History, Farmer Practice, and Impacts, by Frank Place, Steve Franzel, Qureish Noordin, Bashir Jama, February 2004.
 - 116 To Reach The Poor – Results From The ISNAR-IFPRI Next Harvest Study On Genetically Modified Crops, Public Research, and Policy Implications, by Atanas Atanassov, Ahmed Bahieldin, Johan Brink, Moises Burachik, Joel I. Cohen, Vibha Dhawan, Reynaldo V. Eborá, José Falck-Zepeda, Luis Herrera-Estrella, John Komen, Fee Chon Low, Emeka Omaliko, Benjamin Odhiambo, Hector Quemada, Yufa Peng, Maria Jose Sampaio, Idah Sithole-Niang, Ana Sittenfeld, Melinda Smale, Sutrisno, Ruud Valyasevi, Yusuf Zafar, and Patricia Zambrano, March 2004
 - 117 Agri-Environmental Policies In A Transitional Economy: The Value of Agricultural Biodiversity in Hungarian Home Gardens, by Ekin Birol, Melinda Smale, And Ágnes Gyovai, April 2004.
 - 118 New Challenges in the Cassava Transformation in Nigeria and Ghana, by Felix Nweke, June 2004.
 - 119 International Exchange of Genetic Resources, the Role of Information and Implications for Ownership: The Case of the U.S. National Plant Germplasm System, by Kelly Day Rubenstein and Melinda Smale, July 2004.
-

EPTD DISCUSSION PAPERS

- 120 Are Horticultural Exports a Replicable Success Story? Evidence from Kenya and Côte d'Ivoire, by Nicholas Minot and Margaret Ngigi, August 2004.
- 121 Spatial Analysis of Sustainable Livelihood Enterprises of Uganda Cotton Production, by Liangzhi You and Jordan Chamberlin, September 2004

