



**AgEcon** SEARCH  
RESEARCH IN AGRICULTURAL & APPLIED ECONOMICS

*The World's Largest Open Access Agricultural & Applied Economics Digital Library*

**This document is discoverable and free to researchers across the globe due to the work of AgEcon Search.**

**Help ensure our sustainability.**

Give to AgEcon Search

AgEcon Search

<http://ageconsearch.umn.edu>

[aesearch@umn.edu](mailto:aesearch@umn.edu)

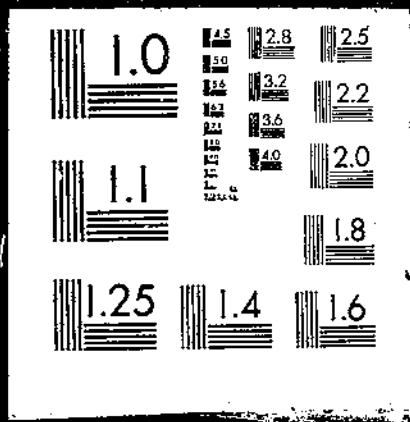
*Papers downloaded from **AgEcon Search** may be used for non-commercial purposes and personal study only. No other use, including posting to another Internet site, is permitted without permission from the copyright owner (not AgEcon Search), or as allowed under the provisions of Fair Use, U.S. Copyright Act, Title 17 U.S.C.*

USDA/FATUS-  
DEC 71

FATUS/FOREIGN AGRICULTURAL TRADE OF THE UNITED STATES, 1971 DECEMBER. Washington, DC:  
Economic Research Service.

(NAL Call No. A286:9/Ag8)

1 OF 1  
USDA  
FATUS  
DEC 71



Reserve

A286.9

Ag 8

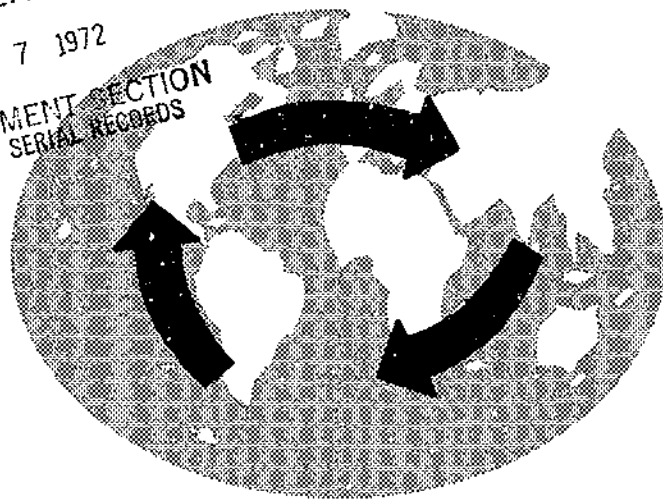
DECEMBER 1971

# FOREIGN AGRICULTURAL TRADE OF THE UNITED STATES

U. S. DEPT. OF AGRICULTURE  
NATIONAL AGRICULTURAL LIBRARY  
RECEIVED

JAN 7 1972

PROCUREMENT SECTION  
CURRENT SERIAL RECORDS



## IN THIS ISSUE

---

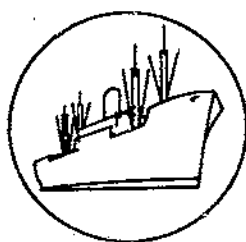
- U.S. Farm Exports to 50 Largest Markets, 1970/71
- Oilseeds' Role in World Agricultural Trade
- Summer Export Prices Rose; Import Prices Continued to Drop
- Trade Statistics, July-October

PUBLISHED MONTHLY BY ECONOMIC RESEARCH SERVICE, U.S. DEPARTMENT OF AGRICULTURE

## CONTENTS

	<u>Page</u>
Special in this issue:	
Index of Articles, July-December .....	3
U.S. Farm Exports to 50 Largest Markets, 1970/71 .....	8
Oilseeds' Role in World Agricultural Trade .....	24
Summer Export Prices Rose; Import Prices Continued to Drop .....	31
International Price Highlights .....	35
Export Highlights, July-October .....	39
Import Highlights, July-October .....	44
U.S. agricultural trade data for October and July-October :	
U.S. imports: Quantity and value by commodity .....	47
U.S. exports: Quantity and value by commodity .....	52
U.S. exports and imports: Value by country .....	56
Quantity indexes, by commodity groups, July-October:	
Exports .....	58
Explanatory Note .....	59

Trade Statistics and Analysis Branch  
Foreign Development and Trade Division  
Economic Research Service



## SPECIAL in this issue

---

### INDEX OF ARTICLES, JULY-DECEMBER 1971

	<u>Issue</u>	<u>Page</u>
<u>Special Articles</u>		
<b>U.S. Agricultural Exports:</b>		
U.S. Farm Exports Hit New High of \$1.8 Billion in 1970/71, by Dewain H. Rahe .....	Aug.	5
U.S. Agricultural Exports to EC Peak at \$1.8 Billion in Fiscal 1971, by Dewain H. Rahe .....	Sept.	5
U.S. Agricultural Export Shares by Regions and States, by Isaac E. Lemon .....	Oct.	6
U.S. Agricultural Exports as Share of Production .....	Oct.	19
Export Fact Sheet .....	Oct.	27
U.S. Farm Exports to 50 Leading Markets, 1970/71 .....	Dec.	8
<b>U.S. Agricultural Exports and Imports:</b>		
U.S. Agricultural Trade with Canada, by M. Louise Perkins .....	Nov.	29
Smaller Farm Trade with Mexico in 1970/71, by Thomas A. Warden .....	Nov.	38
<b>U.S. Agricultural Imports:</b>		
U.S. Agricultural Imports Rise 4 Percent in 1970/71 .....	Aug.	20
U.S. Imports of Fruits and Vegetables Under Quarantine .....	Sept.	24
Import Fact Sheet .....	Oct.	32
U.S. Imports of EC Farm Products Gained in 1960's, by Dewain H. Rahe ..	Nov.	47
<b>Dollar Sales and Government Programs:</b>		
U.S. Agricultural Exports Under Government Programs, 1970/71, by Isaac E. Lemon .....	Nov.	6
<b>Price Developments:</b>		
"Terms of Trade" of U.S. Agriculture Continue Sharp Rise in Spring, by Hans G. Hirsch .....	Sept.	45
Summer Export Prices Rose; Import Prices Continued to Drop, by Hans G. Hirsch .....	Dec.	31
<b>World Agricultural Trade:</b>		
Oilseeds' Role in World Agricultural Trade, by M. Louise Perkins .....	Dec.	24

	<u>Issue</u>	<u>Page</u>
<u>Commercial and Government Program Export Highlights</u>		
July-March 1970/71 .....	July	6

Ocean Freight Rate Highlights

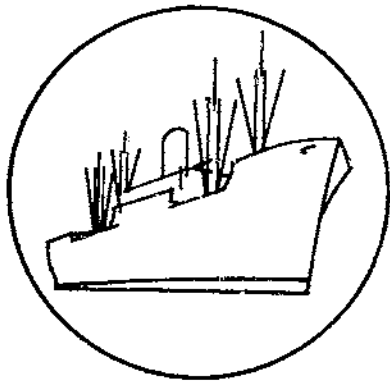
Ocean Freight Rates Gain in 1970 Despite Sharp Decline in Fourth Quarter, by T.Q. Hutchinson .....	July	18
Heavy Grain Rates Decline, by T.Q. Hutchinson .....	Nov.	55

Supplement

U.S. Foreign Agricultural Trade Statistical Report, Calendar Year 1970 .....	July	
--	------	--

Features Appearing Every Month

Agricultural Export Highlights  
 Agricultural Import Highlights  
 International Agricultural Price Highlights  
 Quantity Indexes of U.S. Agricultural Trade  
 U.S. Agricultural Trade Statistics for latest month  
 Cumulative U.S. Agricultural Trade Data for current fiscal year



# FOREIGN AGRICULTURAL TRADE OF THE UNITED STATES

---

## Digest

---

U.S. Farm Exports to 50 Largest Markets, 1970/71 (see p. 8). While U.S. agricultural exports of \$7.8 billion in 1970/71 went to over 150 destinations, 15 countries received 71 percent of the total. The top 50 markets took \$7.3 billion, or 94 percent, of U.S. farm-product exports, ranging from \$1.2 billion for Japan down to \$23 million for Algeria. The largest gains in 1970/71 were registered for West Germany, Korea, Japan, the Netherlands, and Yugoslavia. U.S. farm exports declined in only 13 of the 50 major markets, with India, South Vietnam, Pakistan, Indonesia, and Mexico showing the largest declines.

\* \* \* \* \*

Oilseeds' Role in World Agricultural Trade (see p. 24). World exports of oilseeds, nuts, and kernels totaled \$1.8 billion annually in 1967-69, compared with \$1.2 billion in 1960-62. The substantial value increase in oilseed exports was boosted largely by the recent rapid expansion in U.S. soybean exports.

The U.S. response to foreign demand for soybeans further generated a shift in the major oilseed suppliers. Until 1965, the less developed countries furnished about one-half of the world's oilseed requirements. With the recent growth in demand for soybeans, supplied mainly by the United States, nearly 57 percent of the world's oilseeds originated in the developed countries by the end of the 1960's. Throughout the decade, Japan and the West European countries served as import markets for nearly four-fifths of world oilseed exports.

\* \* \* \* \*

Summer Export Prices Rose; Import Prices Continued to Drop (see p. 31). The mid-summer drop in wheat and feed grain prices in response to bountiful crops still left quarterly and annual export prices significantly above year-earlier levels. Prices of soybeans and products as well as most other leading export products also rose significantly. Import prices, by contrast, declined, especially for tropical products. With the quarterly export price index at 108.1 percent of a year earlier, and the import price index at 94.5 percent, the terms of trade were 114.4 percent. Corresponding annual data pushed the 12-month terms-of-trade index to 112.1, an all-time high.

\* \* \* \* \*



International Price Highlights (see p. 35). Feed grain prices and, to a lesser extent, wheat prices were weak in October, reflecting U.S. harvests of one-third more corn and sorghum grain and one-ninth more wheat than a year ago. The rice price, although slightly down, was relatively stable and the soybean price was virtually unchanged. The cotton price rose decisively to a record level.

\* \* \* \* \*

U.S. Agricultural Exports, July-October 1971 (see p. 39). During October 1971, U.S. agricultural exports fell sharply because of the longshoremen's strike at East Coast and some Gulf ports. But the 80-day back-to-work injunction against the West Coast longshoremen boosted shipments from West Coast ports. At \$466 million, October 1971 agricultural exports were about 36 percent below the like month in 1970. For July-October, exports of farm products were \$2.3 billion, 3 percent below the level of a year earlier. Gains for cotton, soybeans, vegetable oils, protein meal, tobacco, and butter were about offset by substantial reductions for wheat and feed grains, and smaller dips for fruits, nuts, vegetables, alfalfa meal, and rice.

\* \* \* \* \*

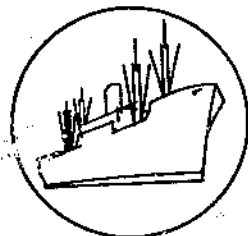
U.S. Agricultural Imports, July-October 1971 (see p. 44). At nearly \$2 billion, U.S. agricultural imports were 7 percent above similar months a year ago. Entries of agricultural products were influenced mainly by inventory accumulation prior to the longshoremen's walkout at Atlantic and Gulf ports on October 1. Entries through West Coast ports during July-September were less than half of those recorded a year earlier, while Atlantic and Gulf port imports showed a 36-percent gain. October agricultural imports dropped sharply to \$302 million from record levels of \$651 million in September and \$555 million in August. U.S. agricultural imports from Mainland China began in August after the lifting of a 20-year restriction.

\* \* \* \* \*

Table 1.--U.S. exports: Value of total and agricultural exports, including specified Government-financed programs and commercial (dollar) sales by selected commodities and commodity groups, averages 1955-59, 1960-64, and 1965-69; annual 1969/70 and 1970/71; and monthly 1970 to date <sup>1/</sup> <sub>2/</sub>

Year ending June 30	Animals and products	Cotton, and linters	Wheat and flour	Feed grains, excluding products	Milled rice	Oilseeds and products	Fruits and vegetable tables	Tobacco, and manufactured	Other	Total agri- cultural exports	Nonagri- cultural exports	Total all commodi- ties
-- Million dollars --												
<b>Average</b>												
<b>1955-59</b>												
Total .....	3/609	685	709	373	107	3/437	344	344	210	3,818	13,900	17,718
Commercial ..	422	399	240	231	57	329	328	310	196	2,512		
Programs ....	187	286	469	142	50	108	16	34	14	1,306		
<b>1960-64</b>												
Total .....	3/655	717	1,196	664	155	3/705	416	387	255	5,150	16,253	21,443
Commercial ..	553	548	506	545	80	589	413	333	229	3,696		
Programs ....	102	169	790	119	75	116	3	54	26	1,454		
<b>1965-69</b>												
Total .....	3/747	463	1,225	3/1,043	276	3/1,210	469	468	418	6,319	24,364	30,683
Commercial ..	609	353	543	948	163	1,103	467	436	367	4,989		
Programs ....	138	110	682	95	113	107	2	32	51	1,330		
<b>Annual</b>												
<b>1969/70</b>												
Total .....	811	347	942	3/988	322	1,676	548	562	525	6,721	34,338	41,059
Commercial ..	709	214	551	925	172	1,590	548	539	437	5,685		
Programs ....	102	133	391	63	150	86	6/	23	88	1,036		
<b>1970/71 <sup>5/</sup></b>												
Total .....	915	492	1,202	2/1,095	289	2,060	550	570	586	7,759	35,903	43,662
Commercial ..	781	368	835	1,030	123	1,947	550	548	514	6,696		
Programs ....	134	124	367	65	166	113	---	22	72	1,063		
<b>Monthly 1970/71 <sup>6/</sup></b>												
July .....	64	25	78	100	29	136	59	36	45	563	2,967	3,530
August .....	69	11	95	88	19	134	46	29	41	531	2,727	3,258
September .....	68	11	85	107	15	141	46	49	46	568	2,753	3,321
October .....	74	23	121	123	34	181	50	57	68	731	3,171	3,902
November .....	81	33	106	97	36	194	43	78	57	726	2,770	3,496
December .....	82	47	113	110	18	218	43	64	51	746	2,940	3,686
January .....	77	58	106	95	22	183	41	42	48	672	2,812	3,484
February .....	80	60	88	106	17	164	39	32	50	636	2,866	3,502
March .....	88	75	109	87	20	189	47	52	49	716	3,391	4,107
April .....	78	62	92	67	24	176	45	43	47	634	3,174	3,808
May .....	74	45	122	59	20	165	47	47	46	625	3,286	3,911
June .....	80	45	87	51	27	180	54	39	44	607	3,072	2,679
July-June .....	915	495	1,202	1,090	281	2,061	550	568	592	7,752	34,932	43,684
<b>Monthly 1971/72 <sup>6/</sup></b>												
July .....	60	31	88	76	12	196	38	41	37	579	2,773	3,352
August .....	71	24	75	68	17	160	34	46	51	546	2,831	3,377
September .....	79	48	110	115	35	176	43	84	60	750	3,460	4,209
October .....	71	30	62	39	30	133	53	4	44	466	2,375	2,841
July-October .....	277	133	335	298	93	665	168	176	190	2,341	11,438	13,779

1/ Government-financed programs include exports under Public Law 480 programs (sales for foreign currency, long-term dollar and convertible local currency credit sales, barter for strategic materials, and donations) and under AID programs. 2/ Commercial sales (exports outside Government-financed programs) include in addition to unassisted commercial transactions, shipments of some commodities with governmental assistance in the form of (1) barter shipments for overseas procurement for U.S. agencies, which benefit the U.S. balance of payments and rely primarily upon authority other than P.L. 480; (2) extension of credit and credit guarantees for relatively short periods; (3) sales of Government-owned commodities at less than domestic market prices; and (4) export payments in cash or in kind. 3/ Commodity group totals for feed grains, oilseeds and products, and animals and products include for years noted, in addition to the value reported by the Bureau of the Census, the estimated value of certain commodities donated through voluntary relief agencies, which are included by Census in "Other food for relief and charity." 4/ Less than \$500,000. 5/ Preliminary data. 6/ Commodities may not add to total due to rounding. Data by months for 1970/71 do not add to the 1970/71 totals for some commodities because some revisions in the yearly totals were not available by months.



## SPECIAL in this issue

---

### U.S. FARM EXPORTS TO 50 LARGEST MARKETS, 1970/71

The United States exported nearly \$7.8 billion worth of farm products to 157 countries in 1970/71, but 15 countries received 71 percent of the total (table 3). U.S. farm exports to the 50 major markets listed in table 6 amounted to \$7.28 billion or 94 percent of the exports to all countries. Shipments of farm commodities to the 50 individual countries ranged from \$1.22 billion worth to Japan to \$23 million worth to Algeria. Exports to 18 countries exceeded the \$100 million mark and four others approached that level.

Shipments of farm products to the European Community (EC) accounted for the largest single share of total U.S. agricultural exports. In 1970/71, the EC took a record \$1.77 billion worth -- a fourth above the previous year. The six-country EC total was nearly a fourth of all U.S. farm exports. West Germany was the largest market among EC countries, accounting for \$587 million, and was the top outlet for U.S. protein meal, nuts and preparations, and poultry meat. West Germany also ranked second for tobacco and third for oilseeds and fruits (table 3).

The Netherlands was our second-ranking market for oilseeds and feed grains, and a leading outlet for protein meal, fruits, vegetables, meats, and nuts. Italy's principal purchases were feed grains, oilseeds, protein meal, tobacco, cotton, and hides. France was a leading market for protein meal, oilseeds, meats, fruits, cotton, rice, and nuts, while Belgium-Luxembourg took large shipments of oilseeds, protein meal, and tobacco.

For the second consecutive year, Japan's purchases of U.S. farm commodities exceeded the billion-dollar level. Leading all other outlets for U.S. oilseeds, wheat, feed grains, cotton, and hides and skins, and ranking second or third for tobacco, fruits and preparations, animal fats, vegetables and preparations, poultry meat, and nuts and preparations, Japan took a record \$1.22 billion worth of our farm products, 12 percent more than a year earlier. Shipments to Japan accounted for nearly a fourth of total U.S. oilseed exports, nearly a third of the feed grains, and more than a fifth of U.S. cotton exports in 1970/71.

Farm product shipments to Canada advanced slightly to \$778 million, including U.S. grain and oilseed exports transshipped through Canadian ports. Canada remained our top foreign outlet for fruits, vegetables, and meats and a major market for cotton, protein meal, vegetable oils, rice, hides, and nuts. Large quantities of the oilseeds, wheat, and feed grains reported as exports to Canada were transshipped to other countries.

Of the 50 leading markets in 1970/71, 37 increased their purchases over the year before. Largest gains were registered for West Germany, Korea, Japan, the Netherlands, and Yugoslavia. Exports dropped in 1970/71 to the other 13 markets, with India, South Vietnam, Pakistan, Indonesia, and Mexico showing the largest declines.

Table 2.—Value of U.S. agricultural exports to 15 major markets,  
fiscal years 1966-71 <sup>1/</sup>

Country	1965/66	1966/67	1967/68	1968/69	1969/70	1970/71	Change 1965/66 to 1970/71
	-- Million dollars --						Percent
Japan .....	913.6	939.1	898.3	839.5	1,089.2	1,216.1	33.1
Canada .....	629.9	593.8	543.4	643.1	765.8	778.2	23.5
West Germany .....	476.5	494.3	387.2	401.0	431.2	587.3	23.3
Netherlands .....	514.7	472.6	493.2	425.8	452.9	548.8	6.6
United Kingdom .....	435.0	454.0	397.3	329.0	406.4	469.8	8.0
Korea, Republic of .....	89.1	116.0	176.9	258.7	171.1	303.2	240.3
Italy .....	277.2	211.0	237.6	205.0	220.3	246.9	-10.9
India .....	540.9	505.8	511.1	248.3	275.4	223.4	-58.7
France .....	142.4	152.9	144.7	142.3	140.1	194.7	36.7
Belgium-Luxembourg .....	182.8	179.1	140.1	126.2	138.6	188.2	3.0
Taiwan .....	65.1	103.2	121.5	113.1	114.1	168.5	158.8
Spain .....	200.6	157.8	158.2	124.5	169.1	167.6	-16.5
South Vietnam .....	102.6	196.0	153.9	111.2	165.3	134.1	30.7
Mexico .....	84.5	74.4	71.1	86.3	138.9	131.1	55.1
Israel .....	78.7	81.1	82.9	76.2	95.8	120.6	53.2
15 major markets .....	4,733.6	4,731.1	4,517.4	4,130.2	4,774.2	5,478.5	15.7
Other .....	1,947.3	2,030.1	1,795.1	1,610.7	1,947.2	2,280.5	17.1
Total .....	6,680.9	6,761.2	6,312.5	5,740.9	6,721.4	7,759.0	16.1

<sup>1/</sup> Not adjusted for transshipments.

Table 3.--Leading export markets for U.S. agricultural products, fiscal year 1971 1/

Commodity	Total	Leading 15 export markets by rank									
		1	2	3	4	5	6	7	8	9	
-- Million dollars --											
All commodities	7,759.0	Japan	Canada	W. Germ.	Nether.	U.K.	Korea	Italy	India	France	
		1,216.1	778.2	587.3	548.8	469.8	303.2	246.9	223.4	194.7	
Oilseeds	1,326.7	Japan	Nether.	W. Germ.	Canada	Spain	Italy	Taiwan	Denmark	France	
		311.6	171.8	161.2	141.1	120.0	69.9	60.9	59.7	41.0	
Wheat and flour	1,202.0	Japan	Korea	India	U.K.	Canada	Brazil	Pakistan	Venezuela	Morocco	
		170.9	99.4	87.1	67.6	54.4	48.8	40.0	38.0	36.6	
Feed grains	1,094.8	Japan	Nether.	Canada	U.K.	W. Germ.	Italy	Bel.-Lux.	Israel	Korea	
		338.3	138.8	76.6	75.5	73.8	73.5	59.2	39.2	25.0	
Tobacco, unmanufactured	570.3	U.K.	W. Germ.	Japan	Switz.	Nether.	Italy	Thailand	Sweden	Bel.-Lux.	
		123.3	101.5	55.5	27.7	27.1	19.3	17.4	17.3	16.5	
Cotton, excluding linters	491.9	Japan	Korea	Taiwan	India	Canada	Indonesia	Hong Kong	Thailand	S. Viet.	
		109.1	64.2	48.4	40.1	36.1	24.6	23.1	18.0	17.0	
Protein meal	397.7	W. Germ.	France	Nether.	Italy	Bel.-Lux.	Canada	Yugoslav.	Mexico	U.K.	
		78.9	62.4	59.2	26.5	25.9	24.6	18.5	9.4	9.2	
Fruits and preparations	341.5	Canada	Japan	W. Germ.	Nether.	Sweden	Hong Kong	U.K.	France	Bel.-Lux.	
		148.6	27.0	24.0	16.6	15.9	14.5	13.2	12.5	7.4	
Vegetable fats and oils	336.1	India	Yugoslav.	Pakistan	Canada	Iran	Morocco	Peru	Tunisia	Venezuela	
		38.5	35.1	34.6	21.3	21.2	18.3	12.7	12.4	10.8	
Rice, milled	287.3	Korea	Indonesia	S. Viet.	S. Africa	U.K.	S. Arabia	Canada	W. Germ.	Jamaica	
		72.2	55.3	44.8	15.2	11.0	9.8	9.8	9.7	5.8	
Animal fats and oils	272.7	U.K.	Japan	India	Nether.	Korea	UAR	Mexico	Pakistan	Spain	
		41.3	38.7	25.4	19.4	14.4	10.6	9.6	9.1	8.8	
Vegetables and preparations	208.5	Canada	U.K.	Japan	Venezuela	Mexico	W. Germ.	Sweden	Nether.	Brazil	
		77.3	19.9	10.8	8.7	8.4	7.9	5.1	4.5	3.9	
Hides and skins	174.5	Japan	Mexico	Canada	W. Germ.	U.K.	Italy	France	Czecho.	Switz.	
		49.6	19.5	14.6	14.3	12.2	6.0	5.4	5.3	5.2	
Meats, excluding poultry	142.4	Canada	France	U.K.	W. Germ.	Nether.	Japan	Bahamas	Mexico	Bel.-Lux.	
		26.6	22.9	16.9	11.7	10.7	10.6	10.0	4.7	4.2	
Dairy products	131.2	S. Viet.	Brazil	Mexico	Korea	Colombia	Chile	Turkey	U.K.	India	
		21.5	14.1	8.9	7.2	7.2	6.0	4.7	3.9	3.5	
Nuts and preparations	67.3	W. Germ.	Japan	Canada	U.K.	Sweden	Switz.	France	Nether.	Norway	
		12.5	10.7	8.3	5.8	4.5	3.5	3.3	2.5	2.3	
Poultry meat	41.9	W. Germ.	Japan	Hong Kong	Switz.	Canada	Jamaica	U.K.	Nether.	Greece	
		8.1	4.9	4.9	3.9	2.3	1.9	1.1	.8	.7	

1/ Not adjusted for transshipments.

Continued--

Table 3.--Leading export markets for U.S. agricultural products, fiscal year 1971 1/--Continued

Commodity	Leading 15 export markets by rank						High	All	High	
	10	11	12	13	14	15	15	others	15	
	-- Million dollars --						countries		countries	Percent
All commodities	Bel.-Lux. 188.2	Taiwan 168.5	Spain 167.6	S. Viet. 134.1	Mexico 131.1	Israel 120.6	5,478.5	2,280.5	70.6	
Oilseeds	Bel.-Lux. 40.7	Israel 37.8	Norway 23.8	U.K. 18.0	Mexico 12.7	Venezuela 9.7	1,279.9	46.8	96.5	
Wheat and flour	W. Germ. 34.0	Taiwan 32.8	Turkey 32.5	Romania 28.7	Philip. 28.2	Israel 26.3	825.3	376.7	68.7	
Feed grains	Portugal 20.8	Venezuela 15.8	Poland 14.7	Mexico 12.6	Yugoslav. 12.5	Czecho. 11.8	988.1	106.7	90.3	
Tobacco, unmanufactured	Denmark 15.2	S. Viet. 15.0	Australia 14.7	Ireland 12.8	Taiwan 9.7	Spain 7.7	480.7	89.6	84.3	
Cotton, excluding linters	Philip. 15.2	U.K. 12.2	W. Germ. 8.6	France 8.1	Italy 7.5	Bel.-Lux. 6.0	438.2	53.7	89.1	
Protein meal	Poland 8.4	Denmark 6.7	Czecho. 6.1	Ireland 5.9	Switz. 5.8	Philip. 5.1	352.6	45.1	88.7	
Fruits and preparations	Switz. 6.1	Venezuela 5.2	Denmark 4.9	Italy 4.6	Norway 4.2	Mexico 4.1	308.8	32.7	90.4	
Vegetable fats and oils	Nether. 10.1	U.K. 8.8	Chile 8.5	Poland 8.3	W. Germ. 7.9	UAR 7.8	256.8	79.3	76.4	
Rice, milled	France 4.3	Bel.-Lux. 4.0	Nether. 2.8	Switz. 2.7	Israel 2.1	Hong Kong 2.0	251.5	35.8	87.5	
Animal fats and oils	Italy 6.6	Colombia 6.2	Bel.-Lux. 5.8	W. Germ. 5.3	Poland 5.1	Canada 4.2	210.5	62.2	77.2	
Vegetables and preparations	Australia 3.4	Panama 2.9	France 2.8	Dom. Rep. 2.8	Hong Kong 2.8	Italy 2.7	163.9	44.6	78.6	
Hides and skins	Spain 4.6	Yugoslav. 3.4	Romania 3.4	Poland 2.9	Nether. 2.7	Taiwan 2.2	151.3	23.2	86.7	
Meats, excluding poultry	Jamaica 2.5	Israel 1.7	Panama 1.4	Hong Kong 1.1	Switz. .7	Venezuela .7	126.4	16.0	88.8	
Dairy products	Dom. Rep. 3.1	Nigeria 3.0	Philip. 2.8	Indonesia 2.8	Canada 2.6	Japan 1.7	93.0	38.2	70.9	
Nuts and preparations	Australia 1.5	Bel.-Lux. 1.5	Venezuela 1.3	Mexico 1.2	Denmark 1.0	Italy .9	60.8	6.5	90.3	
Poultry meat	Italy .7	Mexico .6	Bahamas .5	Bel.-Lux. .4	Sweden .4	France .2	31.4	10.5	74.9	

Table 4.—U.S. agricultural exports: Value by major areas and share of total, fiscal years 1966-71 <sup>1/</sup>

Area of destination	1965/66	1966/67	1967/68	1968/69	1969/70	1970/71
-- Million dollars --						
World .....	6,681	6,761	6,313	5,741	6,721	7,759
Europe .....	3,053	2,822	2,475	2,321	2,713	3,334
Asia .....	2,179	2,425	2,513	2,121	2,480	2,767
Canada .....	482	478	465	495	542	542
South America .....	306	338	330	287	308	368
Africa .....	358	397	228	193	230	295
Caribbean .....	105	117	124	133	139	164
Mexico .....	85	74	71	86	139	131
Central America .....	60	60	61	58	65	87
Australia-Oceania ..	53	50	46	47	56	59
Unspecified .....	—	—	—	—	49	12
-- Percent of total --						
World .....	100.0	100.0	100.0	100.0	100.0	100.0
Europe .....	45.7	41.7	39.2	40.4	40.4	43.0
Asia .....	32.6	35.9	39.8	37.0	36.9	35.7
Canada .....	7.2	7.1	7.4	8.6	8.0	7.0
South America .....	4.6	5.0	5.2	5.0	4.6	4.7
Africa .....	5.3	5.9	3.6	3.4	3.4	3.8
Caribbean .....	1.6	1.7	2.0	2.3	2.1	2.1
Mexico .....	1.3	1.1	1.1	1.5	2.1	1.7
Central America .....	.9	.9	1.0	1.0	1.0	1.1
Australia-Oceania ..	.8	.7	.7	.8	.8	.8
Unspecified .....	—	—	—	—	.7	.1

<sup>1/</sup> Adjusted for transshipments through Canada, the Netherlands, and Belgium.

Table 5.—U.S. agricultural exports: Value by country of destination,  
fiscal years 1970 and 1971 <sup>1/</sup>

Country	Not adjusted for transshipments		Adjusted for transshipments through Canada, the Netherlands, and West Germany	
	1969/70	1970/71	1969/70	1970/71
	— Million dollars —			
Japan .....	1,089	1,216	1,109	1,232
Canada .....	766	778	542	542
West Germany .....	431	587	539	700
Netherlands .....	453	549	384	486
United Kingdom .....	406	470	457	511
Korea, Republic of .....	171	303	171	303
Italy .....	220	247	229	260
India .....	275	223	275	223
France .....	140	195	191	218
Belgium-Luxembourg .....	139	188	139	201
China, Republic of .....	114	168	114	170
Spain .....	169	168	190	185
South Vietnam .....	165	134	165	134
Mexico .....	139	131	139	131
Israel .....	96	121	102	124
Other .....	1,948	2,281	1,975	2,339
Total .....	6,721	7,759	6,721	7,759

<sup>1/</sup> For estimates of transshipments of grains and oilseeds through Canada, the Netherlands, and Belgium by quantity, value, and country of destination, see U.S. Foreign Agricultural Trade Statistical Report, Fiscal Year 1971.



TABLE 6--U.S. AGRICULTURAL EXPORTS: MAJOR COUNTRIES OF DESTINATION BY COMMODITY GROUPS,  
FISCAL YEARS 1966-71

COUNTRY AND YEAR ENDING JUNE 30	GRAINS AND PREPARATIONS			COTTON	VEGETABLE		OIL SEEDS		OIL CAKE AND MEAL
	TOTAL	WHEAT AND FLOUR	RICE, MILLED	FEED GRAINS	EXCL. LINTERS	TOBACCO UNMPD.	FATS AND OILS		(PROTEIN MEAL)
-- 1,000 DOLLARS --									
TOTAL	6,680,940	1,402,235	220,062	1,350,989	385,764	394,717	229,423	778,708	215,734
1966	6,761,210	1,311,756	307,826	1,151,423	542,266	550,264	197,108	813,116	234,089
1967	6,312,542	1,277,436	337,090	1,000,325	474,768	493,565	161,495	788,015	252,729
1968	5,740,921	893,130	315,537	773,818	328,644	506,832	147,738	828,324	262,941
1969	6,721,367	941,619	320,004	985,929	346,627	539,617	233,655	1,119,725	322,587
1970	7,758,999	1,201,989	287,287	1,094,772	491,884	570,253	336,076	1,326,673	397,684
1971									
(01) JAPAN	913,607	114,141	38,606	233,590	91,642	39,781	3,318	210,332	2,137
1966	939,133	138,156	15,354	248,603	139,187	38,510	2,398	199,465	645
1967	898,278	140,822	470	226,896	112,300	32,938	3,075	216,679	1,039
1968	839,483	112,260	395	719,064	67,662	36,240	2,764	194,979	4,089
1969	1,089,165	136,083	427	334,331	73,753	50,214	4,528	260,059	5,685
1970	1,216,062	170,897	1	338,287	109,133	55,525	2,449	311,643	4,095
1971									
(02) CANADA	629,906	18,620	8,149	102,073	36,849	4,974	19,211	97,451	19,622
1966	593,806	42,136	8,916	75,677	34,806	3,881	5,818	66,559	22,000
1967	543,361	31,960	9,414	54,377	19,001	4,326	9,915	63,516	21,363
1968	643,144	23,243	10,027	81,225	12,406	3,296	12,226	101,858	23,113
1969	765,834	40,629	10,464	94,013	20,618	2,582	15,318	186,300	26,644
1970	776,225	54,370	9,808	76,646	36,088	2,821	21,796	141,105	24,620
1971									
(03) WEST GERMANY	476,484	22,886	7,623	110,138	12,749	66,055	8,674	98,609	38,825
1966	494,304	29,961	9,598	75,257	20,333	109,374	1,106	109,376	47,140
1967	387,214	20,949	9,691	62,934	12,435	72,927	784	93,631	43,413
1968	401,007	16,906	10,998	48,833	3,771	94,223	3,690	102,674	49,353
1969	431,171	6,999	12,695	45,999	3,243	79,675	7,284	105,394	68,717
1970	587,290	34,008	9,679	73,769	8,646	101,460	7,879	161,178	78,948
1971									
(04) NETHERLANDS	514,738	43,202	3,618	179,241	5,751	21,907	7,582	100,630	26,415
1966	472,550	30,637	6,042	152,476	3,742	23,590	10,065	119,292	33,987
1967	493,219	30,126	7,578	171,210	4,214	27,723	6,446	116,713	45,136
1968	425,751	22,320	8,347	109,058	2,487	26,400	8,457	115,089	47,456
1969	452,948	20,860	10,021	97,243	2,480	21,864	7,892	147,344	49,972
1970	548,780	22,831	2,815	138,809	4,796	27,121	10,088	171,762	59,199
1971									
(05) UNITED KINGDOM	434,982	41,881	6,305	118,812	17,659	94,770	5,030	23,768	8,384
1966	453,997	41,205	10,006	92,066	18,182	150,813	4,788	12,061	6,572
1967	397,333	16,222	10,421	81,493	14,828	152,894	3,520	11,019	10,333
1968	329,033	5,209	10,194	66,884	6,441	126,515	2,448	12,405	4,055
1969	406,419	14,109	11,418	76,924	4,935	144,535	13,752	20,194	4,335
1970	469,763	67,553	10,994	75,501	12,204	123,275	8,838	18,018	9,221
1971									
(06) KOREA, REPUBLIC OF	89,134	36,410	1	571	39,023	0	85	0	0
1966	115,979	55,754	16	1,827	37,307	0	376	2,393	0
1967	176,923	58,349	46,682	13,029	40,483	1	777	1,918	1
1968	258,738	88,770	80,380	12,556	51,966	1	1,231	1,643	208
1969	171,138	61,404	20,646	12,750	49,385	0	1,119	3,842	820
1970	303,100	90,002	72,242	24,974	64,244	0	1,448	7,744	3,598
1971									
(07) ITALY	277,208	11,716	2	154,027	14,035	2,406	760	44,346	13,224
1966	211,035	11,740	7	66,447	32,330	1,599	589	51,303	13,054
1967	237,638	10,501	3	104,943	30,876	5,829	464	42,187	16,970
1968	205,017	16,425	11	79,783	8,821	6,033	698	47,865	18,240
1969	220,314	8,610	17	65,365	6,063	17,289	745	68,324	24,304
1970	246,938	16,392	12	73,542	7,542	19,253	784	69,921	26,480
1971									
(08) INDIA	540,948	430,885	1,240	52,800	15,657	0	12,081	61	184
1966	505,830	256,872	9,540	116,908	42,945	2,273	29,918	12	145
1967	511,068	343,328	4	49,866	50,497	434	27,299	28	1,054
1968	248,334	139,090	8,874	6,017	11,955	630	24,176	5	28
1969	275,377	123,833	8,073	9,332	50,913	201	27,653	67	87
1970	223,372	87,091	0	2,007	40,068	0	38,456	10	149
1971									
(09) FRANCE	142,401	17,574	2,336	4,892	15,320	4,142	945	8,755	38,185
1966	152,908	16,822	3,518	3,301	21,083	4,732	891	6,774	40,751
1967	144,730	16,836	5,447	10,679	17,677	4,366	910	2,434	41,151
1968	142,282	20,734	5,058	6,893	11,210	6,280	1,091	1,243	42,854
1969	140,139	5,155	5,700	3,132	4,056	5,982	1,026	8,887	46,944
1970	194,682	4,284	4,338	3,101	8,055	6,771	743	41,038	62,407
1971									
(10) BELGIUM-LUXEMBOURG	182,758	10,045	1,331	89,718	5,866	10,490	277	25,771	12,824
1966	179,092	9,971	3,090	71,066	6,516	14,699	104	31,293	16,467
1967	140,082	9,462	2,826	41,927	4,975	13,250	97	23,391	22,978
1968	126,166	9,616	3,140	28,329	3,701	14,106	113	32,373	15,532
1969	138,567	6,667	3,791	35,212	2,337	2,337	10,472	42,176	16,831
1970	188,177	5,610	3,958	59,177	6,032	16,464	2,697	40,656	25,895
1971									

TABLE 6--U.S. AGRICULTURAL EXPORTS: MAJOR COUNTRIES OF DESTINATION BY COMMODITY GROUPS, FISCAL YEARS 1966-71--CONTINUED

COUNTRY AND YEAR ENDING JUNE 30	FRUITS AND PREPARATIONS	VEGETABLES AND PREPARATIONS	NUTS AND PREPARATIONS	ANIMAL FATS AND OILS	POULTRY MEAT	OTHER MEATS, EXCL. PRODUCTS	HIDES AND SKINS	DAIRY PRODUCTS	OTHER
-- 1,000 DOLLARS --									
TOTAL	326,639	169,746	46,116	201,724	58,541	105,939	139,303	174,070	481,230
1966	319,870	171,943	40,943	191,253	49,485	110,884	146,893	121,705	500,386
1967	287,378	169,189	40,626	157,407	45,451	97,416	111,230	115,723	502,699
1968	290,875	169,941	34,938	151,901	44,841	147,399	137,247	153,422	553,403
1969	341,301	209,033	60,080	213,118	39,178	139,987	157,298	108,934	642,675
1970	341,469	208,466	67,330	272,747	41,938	142,444	174,505	131,242	672,240
1971									
(01) JAPAN	13,840	3,698	2,724	43,088	4,119	672	44,068	8,845	59,006
1966	14,428	4,438	4,589	39,731	2,210	564	40,928	4,040	45,879
1967	16,134	4,530	6,004	38,490	4,379	1,261	42,501	1,389	49,371
1968	17,671	5,839	5,142	33,588	6,245	26,342	45,824	2,710	58,669
1969	25,863	10,462	6,656	33,934	3,314	18,817	60,755	1,854	62,430
1970	26,976	10,793	10,694	38,687	4,916	10,553	49,615	1,685	70,113
1971									
(02) CANADA	119,315	75,090	12,812	5,939	2,885	18,904	13,424	2,937	71,351
1966	120,062	70,238	13,225	5,327	3,241	25,142	12,262	3,867	80,647
1967	121,002	78,201	11,171	3,471	3,379	17,133	10,042	2,927	82,163
1968	130,002	70,563	12,805	4,149	3,701	38,957	13,594	2,873	89,106
1969	142,112	77,302	10,332	5,048	2,728	25,756	10,825	2,305	94,858
1970	148,599	77,278	8,310	4,204	2,340	26,567	14,610	2,635	126,510
1971									
(03) WEST GERMANY	29,254	10,042	3,288	7,617	21,426	5,312	11,071	902	22,013
1966	20,216	7,017	2,411	5,946	19,333	5,960	9,142	777	21,357
1967	13,797	4,663	3,010	4,441	13,815	4,859	7,072	475	18,318
1968	13,192	5,774	2,205	3,891	9,547	5,105	8,138	417	22,290
1969	25,685	8,092	11,657	4,625	8,548	9,240	7,597	671	25,050
1970	24,006	7,948	12,529	5,271	8,073	11,746	14,329	453	27,368
1971									
(04) NETHERLANDS	20,412	4,004	2,719	17,049	5,193	11,504	13,914	16,301	35,296
1966	18,363	4,659	1,610	14,178	1,745	10,985	5,524	194	35,481
1967	13,382	3,829	2,687	10,653	1,265	8,473	4,535	318	38,929
1968	16,380	4,313	1,406	8,355	952	7,517	5,398	209	45,607
1969	19,323	4,313	2,064	11,171	782	7,724	4,961	111	44,823
1970	16,627	4,458	2,497	19,360	815	10,656	2,663	116	54,167
1971									
(05) UNITED KINGDOM	25,055	18,868	4,856	20,363	2,005	16,606	4,415	1,453	26,732
1966	23,062	21,970	4,251	16,421	2,077	13,760	4,182	2,085	28,496
1967	18,147	16,661	4,316	14,320	1,755	12,738	3,285	1,928	23,453
1968	10,704	20,757	2,081	13,568	1,348	12,062	5,228	1,547	26,787
1969	13,916	19,793	4,841	27,248	987	15,235	4,339	1,642	28,216
1970	13,198	19,875	5,785	41,279	1,148	16,942	12,186	3,925	29,821
1971									
(06) KOREA, REPUBLIC OF	96	137	10	3,447	17	69	222	5,015	4,031
1966	97	148	8	4,775	7	87	2,061	7,143	3,980
1967	121	193	12	3,978	3	27	2,192	4,222	4,935
1968	282	128	13	5,605	3	32	3,185	7,188	5,367
1969	404	215	13	8,457	7	120	2,846	5,156	3,684
1970	680	268	33	14,421	13	214	2,160	7,246	4,513
1971									
(07) ITALY	3,172	1,540	73	11,568	1,696	164	3,661	1,329	13,489
1966	3,334	2,338	31	9,350	1,848	168	4,033	531	12,353
1967	2,911	1,226	46	6,193	1,116	129	4,653	78	9,513
1968	3,108	2,231	72	4,934	944	175	5,166	369	10,142
1969	4,121	2,126	621	4,674	681	120	5,833	552	10,869
1970	4,610	2,699	872	6,635	737	113	5,964	181	11,201
1971									
(08) INDIA	32	106	1	3,614	8	59	21	13,943	10,256
1966	30	92	2	14,064	10	96	17	8,821	24,085
1967	18	271	0	10,090	8	208	8	5,182	22,773
1968	11	48	4	15,740	22	36	6	12,613	28,899
1969	12	51	6	13,834	2	34	18	5,036	26,225
1970	6	29	2	25,410	2	81	38	3,491	26,532
1971									
(09) FRANCE	13,285	2,943	2,325	1,530	256	17,861	1,751	79	10,222
1966	15,369	5,386	307	1,427	211	20,641	2,960	26	8,709
1967	11,360	1,779	402	1,188	162	18,255	2,406	25	9,655
1968	11,304	1,863	407	763	307	18,109	3,677	20	10,469
1969	13,524	4,196	4,329	644	194	21,376	2,887	34	12,073
1970	12,527	2,828	3,284	2,250	193	22,873	5,372	67	14,551
1971									
(10) BELGIUM-LUXEMBOURG	13,001	1,582	2,361	879	214	1,571	762	479	5,587
1966	13,797	1,989	369	1,806	230	2,011	664	155	4,865
1967	11,168	737	858	742	281	2,405	520	177	4,308
1968	8,493	1,851	234	714	246	2,737	393	89	4,499
1969	7,355	1,598	737	1,831	365	4,097	433	74	5,224
1970	7,412	1,333	1,497	5,772	440	4,201	581	64	6,388
1971									

TABLE 6--U.S. AGRICULTURAL EXPORTS: MAJOR COUNTRIES OF DESTINATION BY COMMODITY GROUPS, FISCAL YEARS 1966-71

COUNTRY AND YEAR ENDING JUNE 30	TOTAL	GRAINS AND PREPARATIONS			COTTON EXCL. LINTERS	TOBACCO UNMFD.	VEGETABLE FATS AND OILS	OILSEEDS	OIL CAKE AND MEAL (PROTEIN MEAL)
		WHEAT AND FLOUR	RICE, MILLED	FEED GRAINS					
-- 1,000 DOLLARS --									
(11) REP. OF CHINA									
1966	65,061	17,496	0	1,044	20,120	3,332	1,157	14,567	0
1967	103,166	21,407	0	169	36,220	4,283	1,324	31,567	0
1968	121,477	31,876	0	221	34,557	11,342	1,275	32,658	4
1969	113,074	21,839	0	924	28,885	7,053	143	46,865	1
1970	114,117	21,841	0	766	18,432	10,588	125	53,659	98
1971	168,479	32,820	0	4,116	48,412	9,737	2,453	60,933	1
(12) SPAIN									
1966	200,568	1,045	0	101,018	2,774	2,335	9,616	49,849	10,984
1967	157,804	327	0	54,637	152	4,377	1,507	74,014	739
1968	198,249	2	3	51,222	805	3,568	571	84,219	229
1969	124,494	22	0	7,423	551	4,035	493	89,656	6,079
1970	169,103	0	4	39,102	540	2,566	269	96,426	6,581
1971	167,631	9,952	8	4,191	2,832	7,664	349	119,969	1,721
(13) SOUTH VIETNAM									
1966	102,616	6,492	45,327	1,905	8,278	6,319	2,876	0	5
1967	196,011	11,117	118,949	2,301	13,319	11,506	5,996	0	80
1968	153,859	9,071	104,899	1,746	3,138	8,452	5,550	0	0
1969	111,224	10,965	41,569	2,173	8,079	12,238	6,185	14	26
1970	165,292	17,095	95,968	6,506	14,675	7,624	1,553	0	5
1971	134,088	17,629	44,804	4,980	17,021	15,004	1,767	33	2,381
(14) MEXICO									
1966	84,469	82	3,150	9,183	0	2,292	8,589	803	3,634
1967	74,412	33	283	5,193	0	1,418	1,409	1,407	1,804
1968	71,125	68	30	6,516	8	1	1,767	1,295	336
1969	86,313	169	23	4,134	91	528	3,137	2,985	203
1970	138,932	238	34	25,975	9	0	15,209	15,247	328
1971	131,143	252	162	12,588	11	0	2,984	12,651	9,366
(15) ISRAEL									
1966	78,698	13,775	2,902	24,129	952	512	2,344	22,845	7
1967	81,053	14,089	2,963	25,083	329	684	2,887	31,292	6
1968	82,935	19,107	1,825	26,269	573	1,119	5,282	26,177	5
1969	76,154	21,606	2,408	22,708	180	1,557	4,874	17,974	16
1970	95,832	24,362	2,390	35,015	3	1,268	3,281	24,354	39
1971	120,589	26,348	2,131	39,161	277	1,667	7,649	37,826	31
(16) INDONESIA									
1966	3,468	140	603	101	48	0	388	0	0
1967	37,280	215	15,194	350	20,143	0	34	0	0
1968	49,325	166	32,088	184	9,809	520	141	0	0
1969	89,417	12,330	53,013	8	14,286	573	6	0	0
1970	123,778	26,342	59,876	7	27,994	1,098	113	1	0
1971	115,412	26,175	55,376	60	24,649	189	10	0	0
(17) VENEZUELA									
1966	82,319	23,485	10	3,558	842	105	6,766	3,774	24
1967	84,482	33,138	12	129	120	72	6,071	3,988	24
1968	88,379	39,188	9	1,318	6	85	6,286	4,190	14
1969	90,527	38,878	7	144	1	63	10,583	3,781	46
1970	96,781	40,626	4	4,663	85	108	7,818	6,394	12
1971	112,874	37,956	5	15,813	1,371	139	10,772	9,725	73
(18) YUGOSLAVIA									
1966	124,415	86,733	1	656	15,215	0	9,738	864	5,478
1967	64,163	15,567	0	214	21,253	0	3,035	1,080	11,257
1968	41,210	17,867	0	4	7,538	0	4,799	3	9,094
1969	21,906	5	22	1	7,233	0	1	0	12,019
1970	21,531	5	0	0	0	0	159	11	15,591
1971	101,073	23,597	20	12,519	286	149	35,139	3,644	18,457
(19) DENMARK									
1966	84,683	6	373	7,562	862	10,493	46	39,736	14,942
1967	86,969	4	346	4,517	923	18,258	66	42,056	9,575
1968	81,412	13	344	1,961	1,316	15,136	135	44,748	7,632
1969	63,343	8	286	61	251	15,319	64	36,306	1,695
1970	76,323	13	331	64	1	19,509	48	41,978	2,709
1971	97,812	3	166	4,687	1	15,221	24	59,689	6,664
(20) PAKISTAN									
1966	82,958	56,745	0	1	1,261	947	18,818	1	0
1967	120,695	69,785	7	25,189	587	675	15,425	0	17
1968	168,964	124,116	0	1	3,791	5,499	25,159	0	0
1969	49,156	28,845	0	465	325	0	15,653	0	0
1970	107,526	53,467	2	181	2,692	956	40,907	3	0
1971	90,297	40,039	1	290	2,728	1,500	34,578	6	0
(21) BRAZIL									
1966	78,958	51,093	7	871	0	10	7,733	14	0
1967	103,337	75,048	0	765	0	110	5,552	4	4
1968	112,184	82,620	0	486	76	10	4,132	31	5
1969	70,669	47,943	0	316	0	20	1,273	3	9
1970	72,193	49,554	0	311	0	18	1,701	3	17
1971	87,472	48,821	0	228	1,118	49	1,351	5	13

TABLE 6.--U.S. AGRICULTURAL EXPORTS: MAJOR COUNTRIES OF DESTINATION BY COMMODITY GROUPS,  
FISCAL YEARS 1966-71--CONTINUED

COUNTRY AND YEAR ENDING JUNE 30	FRUITS AND PREPA- RATIONS	VEGETABLES AND PREPA- RATIONS	NUTS AND PREPA- RATIONS	ANIMAL FATS AND OILS	POULTRY MEAT	OTHER MEATS, EXCL. PRODUCTS	HIDES AND SKINS	DAIRY PRODUCTS	OTHER
-- 1,000 DOLLARS --									
(11) REP. OF CHINA									
1966	193	176	0	3,204	0	2	285	1,454	2,031
1967	310	568	0	3,866	12	0	422	1,608	1,410
1968	417	696	7	3,709	3	2	856	1,938	1,916
1969	393	517	0	3,160	0	2	1,776	688	1,628
1970	570	1,133	2	3,160	13	5	1,242	207	2,296
1971	627	780	61	3,521	0	1	2,240	175	2,602
(12) SPAIN									
1966	763	2,240	73	7,963	357	821	3,190	2,987	4,553
1967	915	2,820	140	8,718	7	153	3,436	1,874	3,988
1968	400	1,900	27	6,677	4	176	2,477	2,149	3,820
1969	603	1,170	15	6,957	22	417	2,934	156	3,961
1970	745	2,532	58	12,562	0	216	2,682	191	4,632
1971	437	2,160	22	8,818	0	246	4,599	229	4,434
(13) SOUTH VIETNAM									
1966	91	358	1	77	19	64	0	24,589	6,215
1967	262	460	0	130	1	100	0	23,808	8,382
1968	447	1,112	0	91	1	59	5	8,648	10,620
1969	1,311	490	0	0	0	124	0	19,758	8,292
1970	409	513	0	77	11	275	0	15,585	4,996
1971	190	519	0	203	5	21	0	21,526	8,005
(14) MEXICO									
1966	4,604	2,874	822	2,670	291	2,871	7,543	6,887	28,174
1967	4,668	3,780	735	2,523	232	3,108	12,729	6,072	29,018
1968	4,177	4,460	706	2,314	571	3,008	12,292	5,055	28,521
1969	4,088	4,087	1,229	5,358	711	4,036	15,289	8,487	31,758
1970	4,298	8,119	1,494	13,209	535	5,076	16,070	7,639	27,452
1971	4,129	8,412	1,177	9,551	621	4,721	19,468	8,853	36,197
(15) ISRAEL									
1966	220	301	226	0	29	6,513	876	1,317	750
1967	228	410	360	1	45	1,124	439	171	942
1968	43	312	161	1	27	1,376	844	960	854
1969	367	247	7	3	29	1,092	887	520	1,679
1970	260	615	14	0	9	1,247	829	464	1,682
1971	194	202	71	2	1	1,734	1,006	479	1,810
(16) INDONESIA									
1966	60	58	1	5	15	95	0	299	1,658
1967	88	24	4	26	15	105	0	252	830
1968	36	18	2	0	10	11	0	645	5,695
1969	33	16	1	1	1	24	0	1,208	7,917
1970	42	12	2	2	1	44	0	1,618	6,626
1971	74	33	42	0	0	43	0	2,756	6,049
(17) VENEZUELA									
1966	8,236	6,269	772	1,677	5	1,569	821	3,594	20,817
1967	8,571	7,656	1,214	1,323	13	1,800	424	1,325	18,602
1968	6,604	6,736	1,016	1,706	18	966	344	1,462	18,431
1969	5,430	6,885	1,331	1,487	11	629	487	876	19,888
1970	6,426	8,039	1,028	1,016	20	539	452	469	19,082
1971	5,179	8,741	1,336	1,754	34	702	636	514	18,124
(18) YUGOSLAVIA									
1966	43	1	0	1,337	0	13	1,222	2,806	308
1967	37	0	0	0	0	0	4,893	440	387
1968	1	10	0	336	0	24	1,077	4	453
1969	7	33	0	0	0	0	2,241	1	343
1970	33	81	0	1,281	0	80	3,779	0	511
1971	2	31	111	1,631	0	582	3,416	0	1,494
(19) DENMARK									
1966	6,289	1,087	266	51	9	225	115	22	2,599
1967	7,062	891	304	39	2	166	210	152	2,398
1968	5,456	962	190	95	1	135	29	100	3,159
1969	4,625	1,325	201	36	16	193	66	41	2,850
1970	6,267	1,641	533	26	0	42	18	26	3,117
1971	4,898	1,691	1,037	56	8	63	225	40	3,339
(20) PAKISTAN									
1966	51	46	5	2,640	35	155	1	1,655	1,397
1967	42	55	5	7,693	24	87	6	485	613
1968	6	21	4	8,749	13	57	0	937	611
1969	3	12	0	2,639	11	33	0	754	416
1970	19	19	0	7,225	3	38	0	1,403	611
1971	18	46	2	9,133	19	19	0	982	936
(21) BRAZIL									
1966	173	345	453	13	2	1	41	11,826	6,376
1967	1,441	685	209	239	1	101	0	7,036	12,142
1968	1,659	1,333	129	69	47	16	3	10,943	10,625
1969	1,400	672	110	36	60	42	5	7,919	10,861
1970	1,370	3,109	259	90	17	20	0	6,667	9,057
1971	1,752	3,943	680	3,741	7	4	7	14,093	11,660

TABLE 6--U.S. AGRICULTURAL EXPORTS: MAJOR COUNTRIES OF DESTINATION BY COMMODITY GROUPS,  
FISCAL YEARS 1966-71

COUNTRY AND YEAR ENDING JUNE 30	TOTAL	GRAINS AND PREPARATIONS			COTTON EXCL. LINTERS	TOBACCO UNMFD.	VEGETABLE FATS AND OILS	DILSEEDS	OIL CAKE AND MEAL (PROTEIN HEAL)
		WHEAT AND FLOUR	RICE, MILLED	FEED GRAINS					
-- 1,000 DOLLARS --									
(22) SWITZERLAND	69,827	13,934	2,104	6,105	5,001	13,053	529	4,638	1,300
1966	69,590	10,377	1,513	5,618	10,661	19,101	59	1,467	2,871
1967	53,332	4,937	2,245	3,432	7,453	17,536	87	1,882	495
1968	47,122	9,339	2,065	2,061	4,220	24,461	90	1,284	4,972
1969	81,682	11,268	2,941	3,459	1,927	27,728	569	1,477	8,532
1970	86,182	10,431	2,720	1,594	4,741	27,658	1,246	3,264	5,760
1971									
(23) HONG KONG	41,590	1,482	84	352	11,158	4,210	1,762	77	72
1966	48,670	1,758	755	319	18,144	3,547	713	46	92
1967	77,613	2,218	15,771	280	26,846	4,211	1,189	243	408
1968	58,025	2,200	1,052	9	21,751	3,932	1,294	165	361
1969	55,421	3,241	3,322	22	7,071	3,812	1,122	257	206
1970	72,010	3,425	1,952	17	23,142	3,416	610	509	123
1971									
(24) PHILIPPINES	73,560	27,242	4,847	298	11,616	1,138	1,794	3,626	199
1966	87,115	32,777	5,992	2,871	15,258	4,393	1,503	18	2,204
1967	93,592	40,384	3,160	418	14,557	5,539	1,083	356	3,691
1968	89,298	33,129	11	72	15,549	6,965	783	281	3,883
1969	79,362	27,970	5	116	18,925	8,251	289	25	4,324
1970	71,747	28,210	6	1,215	15,208	3,181	395	26	5,063
1971									
(25) MOROCCO	25,399	10,991	0	725	1,538	257	8,012	0	0
1966	48,377	38,221	1	1,826	1,541	714	1,730	0	0
1967	42,155	29,693	0	146	3,560	562	3,660	0	0
1968	19,822	6,726	0	4	3,140	395	4,508	0	0
1969	28,447	14,547	1	101	3,361	161	4,311	5	0
1970	63,852	36,571	2	145	3,497	715	18,265	0	0
1971									
(26) SWEDEN	51,297	347	858	173	7,351	11,506	1,038	109	709
1966	57,007	0	770	178	7,902	17,789	871	151	68
1967	49,678	20	744	309	7,855	14,430	545	30	309
1968	51,172	1	1,018	195	6,301	12,968	1,086	156	459
1969	54,194	0	951	510	4,328	12,335	1,795	200	448
1970	59,646	0	1,196	440	3,790	17,293	2,537	1,064	481
1971									
(27) POLAND	29,355	2,024	0	1,601	5,016	0	3,062	1,598	4,928
1966	59,914	10,270	4,671	17,090	8,529	0	2,423	5,493	3,909
1967	52,373	2,686	0	13,785	10,178	641	2,754	3,647	5,651
1968	55,459	820	0	12,909	13,961	803	1,462	3,796	9,524
1969	52,294	606	0	7,377	6,269	717	3,668	13,555	9,773
1970	50,871	90	0	14,676	0	2	8,267	9,569	8,446
1971									
(28) COLOMBIA	38,204	12,738	68	3,759	6,932	3	5,349	38	0
1966	24,999	10,303	83	84	164	8	3,247	149	0
1967	26,971	8,620	10	1,369	0	4	1,528	45	0
1968	31,969	14,191	0	2,991	2	3	954	38	0
1969	36,057	14,646	0	936	0	5	2,563	200	0
1970	47,850	20,908	0	1,733	2	3	2,932	1,703	0
1971									
(29) PORTUGAL	24,568	6,877	3,314	7,118	1,023	1,784	817	0	499
1966	19,686	6,089	0	6,036	164	2,427	54	0	753
1967	15,730	785	3	4,469	1,062	4,238	327	0	1,235
1968	16,702	1,231	152	2,106	955	4,421	165	940	2,961
1969	23,953	6,236	128	7,322	174	3,474	9	2,737	1,221
1970	47,314	13,417	51	20,849	762	3,642	8	3,828	1,277
1971									
(30) ROMANIA	4,413	0	0	0	43	0	0	108	0
1966	4,794	0	0	0	0	0	0	3	0
1967	516	0	0	0	0	0	0	0	1,266
1968	3,594	0	0	0	0	0	0	0	0
1969	11,531	0	0	0	6,732	0	0	0	0
1970	43,874	28,682	0	5,865	4,545	0	0	0	0
1971									
(31) IRAN	38,339	16,715	10	15	0	0	14,940	11	207
1966	16,063	9,416	14	28	0	0	1,645	7	202
1967	11,682	153	4,607	23	0	0	1,402	64	291
1968	7,702	24	3	24	0	0	2,888	0	157
1969	19,353	27	24	11	0	0	12,446	0	92
1970	43,463	14,522	3	803	0	0	21,215	0	90
1971									
(32) NORWAY	49,171	10,070	37	9,662	1,376	4,577	75	12,272	300
1966	47,066	4,639	40	8,172	1,224	7,953	80	15,108	217
1967	47,300	3,336	31	9,563	654	8,124	80	16,431	9
1968	26,192	703	59	691	655	4,589	78	11,790	54
1969	34,607	3,420	38	1,874	96	7,700	56	12,421	76
1970	43,339	3,927	120	436	337	4,761	89	23,787	860
1971									

TABLE 6--U.S. AGRICULTURAL EXPORTS: MAJOR COUNTRIES OF DESTINATION BY COMMODITY GROUPS,  
FISCAL YEARS 1966-71--CONTINUED

COUNTRY AND YEAR ENDING JUNE 30	FRUITS AND PREPA- RATIONS	VEGETABLES AND PREPA- RATIONS	NUTS AND PREPA- RATIONS	ANIMAL FATS AND OILS	POULTRY MEAT	OTHER MEATS, EXCL. PRODUCTS	HIDES AND SKINS	DAIRY PRODUCTS	OTHER	
	-- 1,000 DOLLARS --									
(22) SWITZERLAND										
1966	5,113	2,793	1,517	3,586	1,405	526	741	442	7,040	
1967	5,092	1,843	747	2,467	802	807	294	608	5,463	
1968	4,472	1,680	1,060	1,176	791	649	221	385	4,831	
1969	5,247	2,033	560	1,050	3,722	522	263	197	5,036	
1970	5,716	1,869	3,209	761	5,176	777	338	267	5,658	
1971	6,148	2,165	3,453	1,686	3,905	712	5,185	392	5,120	
(23) HONG KONG										
1966	8,414	1,587	99	87	2,816	254	109	1,061	7,966	
1967	8,981	1,610	107	41	3,159	299	117	1,186	7,796	
1968	8,503	1,735	141	33	4,303	687	150	1,295	9,600	
1969	8,844	1,587	130	79	3,543	861	242	1,605	10,370	
1970	13,378	2,057	150	94	4,102	1,269	444	1,724	12,550	
1971	14,462	2,779	270	38	4,881	1,105	965	735	13,581	
(24) PHILIPPINES										
1966	3,192	1,487	83	1,346	80	663	145	9,060	6,544	
1967	3,563	1,543	81	801	54	803	685	6,941	7,628	
1968	3,359	2,147	201	911	112	983	766	8,070	7,855	
1969	3,567	1,897	140	905	87	1,020	657	13,182	8,070	
1970	2,330	1,707	107	1,408	44	714	420	4,385	8,342	
1971	722	634	107	1,109	18	372	482	2,828	12,170	
(25) MOROCCO										
1966	16	6	0	2,462	0	0	0	532	860	
1967	154	5	0	1,787	0	0	0	499	1,879	
1968	86	4	0	2,039	0	0	0	541	1,884	
1969	120	1	1	1,886	0	0	0	1,042	1,999	
1970	111	1	0	2,124	0	0	0	846	2,878	
1971	71	9	0	2,935	0	0	0	501	1,141	
(26) SWEDEN										
1966	14,010	5,120	3,277	345	200	1,657	474	136	3,987	
1967	14,030	5,157	2,269	271	273	1,610	500	170	4,998	
1968	11,606	5,227	2,078	202	407	1,361	513	202	3,849	
1969	13,291	6,228	1,466	161	804	1,405	793	1,220	3,620	
1970	14,008	6,906	5,055	43	951	1,129	526	1,097	3,912	
1971	15,937	5,057	4,461	100	417	483	1,410	489	4,491	
(27) POLAND										
1966	4	6	122	5,643	0	0	3,739	1,085	527	
1967	132	1	116	2,739	0	0	2,329	1,292	920	
1968	342	16	424	2,227	0	0	2,606	6,326	1,090	
1969	70	0	190	1,790	0	162	1,958	4,072	942	
1970	177	7	0	5,162	0	7	2,778	1,201	997	
1971	374	57	0	5,136	0	44	2,929	0	1,281	
(28) COLOMBIA										
1966	56	260	2	1,733	2	12	85	2,821	4,346	
1967	74	88	13	2,545	44	9	237	2,793	5,158	
1968	66	429	20	3,239	10	10	28	6,225	5,368	
1969	44	96	19	3,976	9	8	1	5,153	4,484	
1970	50	418	17	3,356	11	10	18	7,390	6,437	
1971	82	454	21	6,152	71	9	2	7,229	6,549	
(29) PORTUGAL										
1966	12	50	428	929	1	25	122	973	597	
1967	5	70	4	1,802	9	41	195	425	1,613	
1968	8	79	4	1,357	1	37	142	961	1,022	
1969	10	66	1	1,595	0	27	211	1,292	569	
1970	4	66	1	1,323	0	22	74	28	934	
1971	3	81	0	2,071	4	77	54	117	1,073	
(30) ROMANIA										
1966	0	239	0	0	0	0	3,942	0	81	
1967	0	124	0	36	21	0	4,499	0	111	
1968	0	0	0	0	0	0	423	0	93	
1969	0	198	0	0	0	0	2,038	0	92	
1970	0	0	0	0	0	0	3,713	0	1,086	
1971	2	1	0	0	0	0	3,350	1,060	369	
(31) IRAN										
1966	86	133	2	2,123	7	29	0	2,028	1,733	
1967	100	61	3	3,448	1	52	34	801	2,245	
1968	105	97	4	2,114	10	74	0	676	2,062	
1969	139	111	3	2,025	12	54	0	58	2,204	
1970	94	139	2	3,127	15	93	14	303	2,966	
1971	59	75	2	2,647	6	67	2	451	3,521	
(32) NORWAY										
1966	6,728	1,046	946	379	4	203	227	25	1,244	
1967	6,182	769	833	372	8	139	208	5	1,117	
1968	5,214	725	960	232	3	233	62	15	1,628	
1969	4,602	687	627	225	21	219	195	15	1,022	
1970	4,542	631	2,190	350	10	228	152	4	817	
1971	4,170	509	2,288	606	25	193	106	11	1,114	

TABLE 6.--U.S. AGRICULTURAL EXPORTS: MAJOR COUNTRIES OF DESTINATION BY COMMODITY GROUPS,  
FISCAL YEARS 1966-71

COUNTRY AND YEAR ENDING JUNE 30	TOTAL	GRAINS AND PREPARATIONS			COTTON EXCL. LINTERS	TOBACCO UNKMO.	VEGETABLE FATS AND OILS	OILSEEDS	OIL CAKE AND MEAL (PROTEIN MEAL)
		WHEAT AND FLOUR	RICE, MILLED	FEED GRAINS					
-- 1,000 DOLLARS --									
(33) THAILAND									
1966	20,539	169	17	4	6,973	9,766	115	6	1
1967	26,458	753	0	13	7,316	14,249	111	15	0
1968	28,726	605	3	17	8,930	13,375	209	6	2
1969	35,955	920	0	67	7,514	20,523	318	6	175
1970	32,149	815	0	18	5,946	17,602	115	11	340
1971	41,907	1,352	0	17	18,045	17,397	55	72	3
(34) TURKEY									
1966	43,487	24,883	1,847	385	0	0	3,355	0	0
1967	16,467	1,315	0	0	1	0	1,085	0	0
1968	15,376	2,382	0	75	0	0	1,473	10	0
1969	33,178	17,790	0	320	0	0	2,272	67	0
1970	45,486	36,583	0	1	0	0	1,140	0	0
1971	41,863	32,537	0	368	0	0	759	4	6
(35) AUSTRALIA									
1966	38,724	15	330	1,093	4,627	14,853	3,111	499	3,366
1967	35,193	14	365	5	1,834	17,972	2,404	316	3,071
1968	30,526	4	454	0	2,651	10,945	2,096	1,319	3,227
1969	31,024	0	361	0	9	15,266	1,229	476	2,925
1970	37,892	8	257	0	7	17,684	2,370	1,118	3,401
1971	40,033	0	30	15	1,094	14,667	5,394	1,257	3,608
(36) JAMAICA									
1966	22,225	1,630	3,868	1,925	661	1,112	1,404	4	110
1967	24,082	1,765	4,540	2,513	539	1,437	1,259	4	358
1968	26,158	2,181	3,737	2,466	99	1,806	1,154	6	368
1969	28,656	2,056	4,079	2,680	204	2,246	1,242	11	629
1970	32,608	2,738	5,138	3,784	216	1,862	1,918	54	827
1971	38,595	2,629	5,788	5,991	376	2,096	2,020	158	1,286
(37) PERU									
1966	34,211	13,289	2,102	182	447	0	2,653	407	75
1967	41,497	16,250	8,783	570	733	68	2,878	19	31
1968	30,620	17,430	53	987	0	64	987	14	4
1969	18,877	7,461	17	337	0	59	1,255	7	0
1970	24,385	9,852	8	177	0	30	4,629	539	9
1971	37,624	12,246	9	566	0	888	12,725	6	3
(38) DOMINICAN REPUBLIC									
1966	23,336	4,505	1,224	12	0	25	3,672	13	8
1967	22,841	4,889	2	343	58	43	2,388	1	9
1968	24,824	6,016	80	209	96	27	5,648	8	7
1969	24,710	5,185	1,203	26	11	31	3,159	1	11
1970	28,502	5,608	0	251	0	22	5,568	102	29
1971	36,770	7,438	105	174	16	2,715	5,369	622	77
(39) CHILE									
1966	38,072	17,739	1,328	1,437	429	4,933	1,560	6	4
1967	37,538	20,184	1,616	1,746	453	4,954	1,865	2	0
1968	24,610	8,578	1,750	3,420	92	907	745	0	0
1969	31,712	6,730	2,306	5,193	19	3,099	5,805	1	2
1970	25,876	1,265	1,411	8,884	127	2,831	3,677	0	0
1971	36,406	8,957	1,077	3,609	280	3,180	8,506	0	1,312
(40) REPUBLIC OF SOUTH AFRICA									
1966	43,867	9,249	12,590	9,501	3,721	47	882	102	36
1967	49,543	20,980	13,841	619	4,765	96	772	156	6
1968	24,727	0	14,434	227	2,828	724	144	81	41
1969	22,695	6	12,725	20	1,112	0	394	99	214
1970	25,557	18	14,967	6	457	0	596	140	315
1971	30,709	899	15,193	82	2,756	73	478	525	467
(41) NIGERIA									
1966	11,811	7,512	431	13	2	2,306	27	0	0
1967	15,021	10,501	334	41	0	2,161	28	0	0
1968	8,131	5,414	182	14	0	666	6	0	0
1969	23,366	9,917	782	85	0	836	14	0	0
1970	22,915	14,301	15	87	0	609	34	0	0
1971	29,418	18,407	0	274	0	1,378	69	0	0
(42) IRELAND									
1966	25,614	1,980	75	9,447	431	7,695	19	0	2,111
1967	30,316	2,430	65	2,562	1,224	17,863	10	2	1,905
1968	24,341	644	85	3,953	1,157	12,086	12	4	2,722
1969	19,072	131	166	882	67	12,136	13	0	2,198
1970	24,565	0	158	3,063	160	13,069	9	0	3,889
1971	29,342	2,228	63	1,918	1,009	12,806	8	55	5,868
(43) TUNISIA									
1966	11,841	3,943	0	1,225	1,628	760	3,754	0	0
1967	37,611	14,004	380	5,760	1,710	741	13,314	0	0
1968	29,777	15,908	0	991	1,817	0	9,496	0	0
1969	21,826	12,848	0	932	0	539	4,638	0	0
1970	27,680	14,030	0	590	595	411	9,482	0	0
1971	27,211	12,239	0	797	0	157	12,435	0	0

TABLE 6.--U.S. AGRICULTURAL EXPORTS: MAJOR COUNTRIES OF DESTINATION BY COMMODITY GROUPS,  
FISCAL YEARS 1966-71--CONTINUED

COUNTRY AND YEAR ENDING JUNE 30	FRUITS AND PREPA- RATIONS	VEGETABLES AND PREPA- RATIONS	NUTS AND PREPA- RATIONS	ANIMAL FATS AND OILS	POULTRY MEAT	OTHER MEATS, EXCL. PRODUCTS	HIDES AND SKINS	DAIRY PRODUCTS	OTHER
-- 1,000 DOLLARS --									
(33) THAILAND									
1966	197	338	13	1	24	23	0	817	2,075
1967	192	408	13	1	12	14	1	492	2,868
1968	268	367	23	2	9	20	1	1,168	3,721
1969	324	314	30	4	11	80	1	1,288	4,380
1970	597	366	22	7	8	116	0	1,356	4,830
1971	391	215	28	15	10	48	7	640	3,612
(34) TURKEY									
1966	2	7	0	3,610	0	23	2,800	3,675	2,900
1967	0	4	0	4,540	0	21	5,935	2,105	1,461
1968	1	4	4	726	0	16	1,581	8,064	1,040
1969	0	17	92	949	0	21	945	9,948	757
1970	0	0	0	4,217	0	22	750	2,596	197
1971	0	2	0	2,440	0	28	882	4,661	176
(35) AUSTRALIA									
1966	211	2,019	3,214	40	66	8	59	82	5,131
1967	241	1,813	1,360	142	45	22	90	103	5,396
1968	367	1,935	1,287	100	36	86	124	129	5,766
1969	356	2,120	1,383	74	23	170	133	151	6,348
1970	2,227	2,412	1,204	97	21	267	23	144	6,652
1971	1,151	3,413	1,547	75	47	198	134	143	7,260
(36) JAMAICA									
1966	415	1,129	23	833	708	2,214	0	1,202	4,987
1967	474	1,034	25	485	711	1,958	0	816	6,064
1968	467	1,206	41	541	861	1,886	0	1,391	7,948
1969	428	800	156	615	990	2,268	4	1,452	8,796
1970	516	1,394	187	706	1,175	1,881	3	1,206	9,003
1971	538	1,472	115	1,097	1,924	2,452	0	1,269	9,384
(37) PERU									
1966	837	358	105	4,070	327	135	23	4,511	4,690
1967	1,106	848	152	2,003	178	342	88	2,258	5,190
1968	350	997	56	1,828	92	147	21	2,384	5,206
1969	162	816	59	2,033	1	144	0	2,847	3,679
1970	153	1,070	60	2,058	6	75	0	1,622	4,097
1971	248	829	23	3,006	0	66	0	1,413	5,596
(38) DOMINICAN REPUBLIC									
1966	1,099	2,530	23	844	65	136	0	2,973	6,207
1967	956	1,855	3,507	1,018	45	112	8	1,210	8,397
1968	770	1,657	1,272	772	14	81	2	2,293	5,872
1969	1,110	1,533	44	1,049	113	87	0	3,624	7,523
1970	873	2,960	26	1,203	77	178	1	2,647	6,957
1971	1,144	2,809	80	1,564	98	221	0	3,102	11,006
(39) CHILE									
1966	23	180	7	19	2,182	18	0	5,572	2,637
1967	46	234	2	6	844	3	0	2,245	3,337
1968	22	97	4	41	9	5	12	4,908	4,020
1969	16	87	9	7	45	4	0	4,867	3,522
1970	32	1,271	0	16	14	0	0	3,086	3,456
1971	7	312	0	226	10	7	0	5,978	2,945
(40) REPUBLIC OF SOUTH AFRICA									
1966	267	418	96	2,478	1	14	9	782	3,674
1967	428	801	129	1,384	2	1	19	295	5,249
1968	524	678	312	1,341	1	11	42	239	3,600
1969	703	843	152	1,768	0	8	42	103	4,506
1970	383	752	164	1,502	7	84	63	692	5,411
1971	394	1,037	482	1,235	9	64	90	607	6,318
(41) NIGERIA									
1966	28	127	10	137	45	19	2	486	666
1967	41	150	11	161	63	22	0	724	784
1968	26	119	3	578	16	16	0	466	625
1969	35	406	1	156	0	8	0	5,376	5,750
1970	26	314	0	350	1	2	0	2,494	4,682
1971	65	443	4	351	18	9	0	3,034	5,366
(42) IRELAND									
1966	2,052	352	252	24	1	15	22	18	1,120
1967	2,396	504	42	67	3	8	128	26	1,081
1968	1,854	506	77	82	1	5	43	30	1,078
1969	946	724	95	41	4	7	41	131	1,490
1970	831	1,314	56	638	1	7	0	0	1,370
1971	824	1,498	115	517	0	6	22	12	2,399
(43) TUNISIA									
1966	0	2	0	0	3	0	10	171	345
1967	0	29	0	0	3	16	115	960	579
1968	0	0	0	0	0	0	271	1,017	277
1969	0	0	0	0	0	6	45	2,734	84
1970	0	0	0	0	0	0	247	2,243	82
1971	0	161	0	0	0	0	60	1,292	70



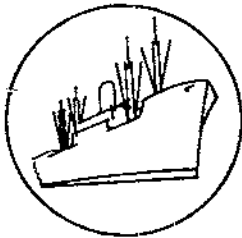
TABLE 6.--U.S. AGRICULTURAL EXPORTS: MAJOR COUNTRIES OF DESTINATION BY COMMODITY GROUPS,  
FISCAL YEARS 1966-71

COUNTRY AND YEAR ENDING JUNE 30	TOTAL	GRAINS AND PREPARATIONS			COTTON EXCL. LINTERS	TOBACCO UNMFD.	VEGETABLE FATS AND OILS	OIL SEEDS	OIL CAKE AND MEAL (PROTEIN MEAL)
		WHEAT AND FLOUR	RICE, HILLED	FEED GRAINS					
-- 1,000 DOLLARS --									
(44) BAHAMAS									
1966	15,606	25	868	235	0	64	965	1	5
1967	19,729	28	1,013	315	0	45	1,097	1	10
1968	23,995	25	1,018	253	0	51	1,179	9	11
1969	27,711	27	1,080	302	0	28	1,217	12	6
1970	26,669	217	1,124	185	0	97	897	12	24
1971	27,135	1,497	1,223	228	0	58	1,127	18	73
(45) PANAMA									
1966	17,850	2,385	60	1,143	16	241	1,932	397	792
1967	15,356	2,513	25	42	0	297	1,929	5	233
1968	16,945	2,829	16	229	0	665	1,982	1	148
1969	14,625	2,435	15	24	0	369	293	3	132
1970	18,255	2,804	18	193	0	755	1,547	0	164
1971	24,981	3,702	1,713	1,081	0	1,197	3,374	118	271
(46) SAUDI ARABIA									
1966	19,813	7,147	7,909	81	0	5	337	0	11
1967	24,398	7,443	11,967	127	0	0	340	0	15
1968	26,818	8,110	12,855	149	0	0	548	0	9
1969	24,197	5,591	12,644	35	0	0	676	0	26
1970	27,512	6,243	15,622	116	0	0	575	0	91
1971	24,487	7,471	9,834	48	0	0	797	0	97
(47) GREECE									
1966	33,186	2,174	605	19,084	684	42	4,581	98	715
1967	18,785	271	1,002	8,033	50	0	3,415	3	771
1968	17,931	64	842	9,973	1,904	10	284	6	211
1969	22,063	1,088	1,006	14,237	995	192	39	8	52
1970	27,257	202	805	20,019	91	176	37	13	4
1971	24,293	384	687	11,560	1,498	269	2,109	10	0
(48) UAR									
1966	124,997	82,844	57	284	0	13,420	14,171	1	175
1967	90,887	57,690	80	1,843	45	3,415	12,769	0	92
1968	10,293	1,459	0	1	181	687	921	0	67
1969	9,360	1	0	0	0	750	1,215	0	207
1970	26,952	1	0	2,595	0	1,857	11,543	0	438
1971	24,147	0	0	2,465	55	1,174	7,766	0	382
(49) CZECHOSLOVAKIA									
1966	39,798	0	0	32,287	0	219	0	3,113	816
1967	21,136	0	0	14,180	0	46	0	2,352	1,439
1968	6,761	0	27	3,385	0	66	0	426	892
1969	4,918	0	0	4	90	141	0	1,224	170
1970	5,785	0	0	0	0	116	1	1,347	1,372
1971	23,902	0	0	11,792	0	209	4	417	6,071
(50) ALGERIA									
1966	21,068	17,898	0	1	192	94	786	0	0
1967	48,915	40,912	0	761	91	123	2,961	0	0
1968	21,656	18,161	0	0	1,601	0	5	0	0
1969	24,346	17,452	0	0	3,253	415	242	0	0
1970	16,198	11,151	0	2	1,302	194	352	1	0
1971	23,052	15,304	0	0	4,355	113	1	0	0
LAFTA									
1966	292,086	97,517	6,655	15,645	7,908	7,611	28,064	1,389	3,748
1967	303,709	128,176	10,772	8,550	1,350	8,025	16,841	1,618	1,888
1968	393,496	176,730	1,891	18,791	182	1,788	16,688	5,811	381
1969	362,818	130,408	2,411	14,637	113	4,652	24,534	6,877	276
1970	432,217	136,785	1,454	40,959	222	3,572	31,375	22,436	388
1971	489,441	138,919	1,269	34,756	2,782	7,461	43,489	24,196	10,774
CACH									
1966	39,868	10,224	2,701	501	1	825	2,167	597	641
1967	42,299	12,214	3,448	257	96	548	1,796	462	1,364
1968	42,267	15,663	1,055	1,815	0	564	768	339	1,151
1969	41,589	17,425	85	211	230	222	1,025	167	1,217
1970	43,104	16,137	92	91	485	305	1,225	1,222	502
1971	59,362	22,209	259	1,993	646	303	1,759	359	1,686
EC									
1966	1,593,589	105,423	14,910	538,016	53,721	105,000	18,238	278,111	129,473
1967	1,509,889	99,131	22,255	368,547	84,004	153,994	12,755	318,038	151,399
1968	1,402,883	87,854	25,545	391,693	70,177	124,095	8,701	278,356	169,650
1969	1,300,222	86,001	27,554	268,896	29,989	147,042	14,050	299,244	173,435
1970	1,383,139	48,291	37,223	246,951	18,178	135,282	18,314	372,125	204,768
1971	1,765,868	83,124	8,950	346,318	35,071	171,070	22,190	484,555	252,929
EFTA									
1966	746,121	73,780	13,193	155,266	34,935	140,342	7,673	83,199	26,134
1967	759,563	63,327	12,759	116,843	41,655	225,159	5,957	71,750	27,639
1968	664,605	25,530	13,931	101,771	34,690	219,843	4,723	74,263	20,602
1969	569,817	16,782	13,960	72,251	19,251	193,944	3,957	63,018	14,401
1970	669,405	35,615	16,037	90,529	12,241	223,754	17,378	79,181	17,735
1971	828,687	96,373	8,827	105,584	22,096	280,076	13,184	109,656	24,483

TABLE 6.--U.S. AGRICULTURAL EXPORTS: MAJOR COUNTRIES OF DESTINATION BY COMMODITY GROUPS,  
FISCAL YEARS 1966-71--CONTINUED

COUNTRY AND YEAR ENDING JUNE 30	FRUITS AND PREPA- RATIONS	VEGETABLES AND PREPA- RATIONS	NUTS AND PREPA- RATIONS	ANIMAL FATS AND OILS	POULTRY MEAT	OTHER MEATS, EXCL. PRODUCTS	HIDES AND SKINS	DAIRY PRODUCTS	OTHER
-- 1,000 DOLLARS --									
(44) BAHAMAS									
1966									
1967	1,241	1,810	87	3	497	4,552	0	798	4,455
1968	1,528	1,775	85	14	713	6,690	0	916	5,499
1969	1,881	2,155	107	21	920	8,951	0	1,080	6,334
1970	2,167	2,589	89	21	1,080	10,990	0	1,261	6,842
1971	1,632	2,415	71	94	957	10,664	0	1,281	6,999
	1,511	2,111	59	72	503	9,999	0	1,114	7,542
(45) PANAMA									
1966	1,758	2,172	176	336	134	947	2	1,155	4,204
1967	1,885	1,988	239	290	104	971	0	1,149	3,686
1968	1,590	2,124	233	282	111	958	0	1,015	4,362
1969	1,739	2,388	215	271	93	1,079	0	1,352	4,214
1970	1,908	2,754	243	278	104	1,276	0	1,242	4,977
1971	2,049	2,893	324	85	106	1,406	1	1,306	5,355
(46) SAUDI ARABIA									
1966	336	782	78	1	713	112	0	511	1,790
1967	454	855	89	1	657	157	0	452	1,841
1968	402	1,074	76	11	567	208	0	542	2,267
1969	440	1,042	68	4	260	201	0	444	2,766
1970	350	852	73	21	136	290	0	313	2,830
1971	318	877	99	25	125	234	0	305	4,257
(47) GREECE									
1966	59	338	5	203	1,789	51	344	1,208	1,206
1967	77	657	0	14	1,606	33	625	751	1,477
1968	75	1,036	2	283	587	41	739	737	1,037
1969	51	983	4	213	555	100	373	313	1,234
1970	50	1,308	10	587	721	26	305	222	2,678
1971	79	1,307	5	720	745	31	330	113	4,446
(48) UAR									
1966	77	33	13	8,415	26	4	23	3,749	1,705
1967	27	184	8	10,715	0	2	140	2,488	1,369
1968	2	1	0	5,438	0	1	13	544	978
1969	0	1	0	6,474	0	0	5	37	668
1970	2	1	0	9,143	0	0	0	163	1,202
1971	0	0	0	10,599	0	0	12	0	1,689
(49) CZECHOSLOVAKIA									
1966	0	1	203	283	1	0	2,109	10	756
1967	3	2	435	0	0	0	2,779	10	390
1968	0	91	31	0	0	0	1,419	15	409
1969	0	38	0	0	0	0	3,186	0	65
1970	0	6	56	0	0	0	2,869	0	18
1971	0	13	73	0	0	0	5,321	0	?
(50) ALGERIA									
1966	150	55	0	1,824	0	2	0	0	66
1967	107	714	0	1,869	0	0	0	830	547
1968	0	781	0	1,107	0	0	0	0	4
1969	4	986	0	1,357	0	0	0	548	89
1970	0	0	0	2,483	0	0	0	636	77
1971	0	0	0	3,250	0	0	0	0	29
LAFTA									
1966	6,025	4,495	1,450	11,935	4,807	3,065	7,715	32,916	53,141
1967	7,647	5,957	1,281	10,180	1,299	3,581	13,057	21,665	61,827
1968	13,147	15,049	2,067	11,289	747	4,178	12,730	32,887	79,340
1969	11,494	13,094	2,858	15,250	839	4,891	15,787	33,472	81,225
1970	12,634	23,368	3,140	22,204	602	5,796	16,541	28,738	82,003
1971	11,655	23,887	3,651	29,647	742	5,523	20,201	40,419	90,070
CACM									
1966	1,340	929	172	4,139	54	280	40	2,920	12,367
1967	1,390	747	233	4,227	47	246	75	3,864	11,290
1968	1,366	768	233	5,165	20	227	133	2,909	10,091
1969	1,086	645	192	3,169	43	233	177	4,995	10,517
1970	940	803	199	6,065	25	212	78	4,131	10,592
1971	1,304	2,246	199	8,425	18	322	141	3,637	13,836
EC									
1966	79,124	20,111	10,766	38,643	28,785	36,412	31,159	19,090	86,607
1967	71,079	21,389	4,728	32,707	23,367	39,745	22,323	1,683	82,745
1968	52,618	12,234	7,003	23,217	16,639	34,131	19,184	1,073	80,713
1969	52,477	16,031	4,824	18,658	11,996	33,643	23,727	1,105	92,050
1970	70,013	20,326	19,407	22,945	10,570	42,557	21,711	1,442	98,036
1971	65,182	19,266	20,680	39,287	10,259	49,589	28,908	881	125,529
EFTA									
1966	65,811	29,613	11,685	25,780	4,100	19,483	6,615	3,224	45,288
1967	61,924	31,095	8,616	21,397	3,887	16,945	6,319	3,405	45,886
1968	50,573	25,673	8,824	17,413	3,439	15,219	4,801	3,728	39,582
1969	43,914	31,514	5,792	16,650	6,384	14,742	7,413	4,378	41,466
1970	50,589	31,554	16,672	29,781	7,428	17,521	6,212	3,189	13,989
1971	50,196	30,014	17,897	45,808	5,696	18,796	20,766	5,174	54,061

100-30, 02-1971



## SPECIAL in this issue

*100/30*  
OILSEEDS' ROLE IN WORLD AGRICULTURAL TRADE

by  
M. Louise Perkins <sup>1/</sup>

Oilseeds have been a growing component in world agricultural trade since the early 1960's. In 1960-62, oilseeds accounted for about 3 percent of world agricultural trade. The oilseed market expanded by some \$600 million in the 1960's to \$1.76 billion annually, and by the end of the decade accounted for nearly 5 percent of world agricultural trade.

The expanding role of oilseeds has been even more pronounced on our own agricultural trade. U.S. oilseed shipments, averaging nearly \$400 million annually in 1960-62, made up 8 percent of all U.S. farm exports. But by the end of the 10-year span, exports of oilseeds, prompted by rapid growth in U.S. soybean shipments, had increased 124 percent in value to represent better than 13 percent of total U.S. farm exports. Oilseed export growth far surpassed that of total U.S. agricultural exports in the 1960's.

While a detailed analysis of world oilseed trade is beyond the scope of this article, an examination of the trade flows -- the source and destination of oilseed trade -- will provide the preliminary framework for more detailed analyses of the nature and structure of world oilseed trade.

In the early 1960's, the less developed countries (LDC's) were the main factor in a \$1.2 billion oilseed market, supplying about half of world oilseed requirements. The developed countries supplied 42 percent of the market, while the centrally planned countries, the U.S.S.R., Eastern Europe, and Mainland China, furnished the remaining 8 percent. Greatly outpaced by rapid growth (10.2 percent year) in oilseed exports from the developed countries, the LDC's by 1965 relinquished their role as leading oilseed suppliers, and by 1967-69, their share plunged to about a third of a \$1.8 billion world oilseed market (table 7).

Value estimates of oilseed exports suggest that the reduced share of oilseeds coming from the LDC's is closely associated with, and even influenced by, a strong downtrend in oilseed shipments from the developing African countries (Africa, less the Republic of South Africa). During 1960-62, developing African nations supplied about \$342 million worth of oilseeds, 57 percent of oilseed exports from all LDC's. But by 1967-69, oilseed exports from these countries totaled \$309 million, or about 53 percent. The absolute value of oilseed exports by African countries dropped 10 percent during the 1960's. Oilseed exports by LDC's in 1967-69 were 7 percent below the \$605 million level of 1960-62.

<sup>1/</sup> Agricultural Economist, Trade Statistics and Analysis Branch, Foreign Development and Trade Division, Economic Research Service.

Table 7.--Distribution of oilseed exports by developed, less developed, and centrally planned countries, calendar years 1960-69

Year	World	Developed	Less developed	Central planned
-- Million dollars --				
1960 .....	1,272	487	628	157
1961 .....	1,161	501	589	71
1962 .....	1,228	557	597	74
1963 .....	1,367	627	671	69
1964 .....	1,496	757	634	105
1965 .....	1,657	830	695	132
1966 .....	1,822	990	665	167
1967 .....	1,723	990	545	188
1968 .....	1,782	984	607	191
1969 .....	1,759	1,058	545	156
-- Percent --				
1960 .....	100.0	38.3	49.4	12.3
1961 .....	100.0	43.2	50.7	6.1
1962 .....	100.0	45.4	48.6	6.0
1963 .....	100.0	45.9	49.1	5.0
1964 .....	100.0	50.6	42.4	7.0
1965 .....	100.0	50.1	41.9	8.0
1966 .....	100.0	54.3	36.5	9.2
1967 .....	100.0	57.5	31.6	10.9
1968 .....	100.0	55.2	34.1	10.7
1969 .....	100.0	57.7	33.5	8.8

Source: Data obtained from FAO, Trade Yearbook, 1966 and 1970.

The developing nations of Africa and Asia represent the world's major source of copra, groundnuts (peanuts), palm nuts and kernels, and sesame seeds. Copra and groundnuts account for over two-thirds of all oilseed exports from the LDC's. Oilseed exports from these areas account for a sizable share of foreign trade earnings essential for financing imports of goods they are unable to produce. Trade in fats and oils, for example, accounts for 25 percent of all exports from the Philippines, 30 percent from Sudan, 45 percent from Nigeria, and 80 percent of Senegal's foreign trade. However, copra and groundnuts, the major export items, showed virtually no growth during the 1960-69 span.

In dollar terms, world exports of copra, supplied mainly by the Asian countries and particularly by the Philippines, Indonesia, Ceylon, and New Guinea, dropped from \$203 million in 1960-62 to \$182 million in 1967-69 (table 8). The decline in exports of copra appears to be closely related to a downtrend in Philippine copra production during the 1960-69 period. Copra production in the Philippines trended downward at an annual average volume of 5,000 tons during the 10-year span.

In the case of groundnut exports by the LDC's, very modest gains were evident during the decade. Groundnut exports from the African countries, estimated at \$209 million in 1960-62, had increased a mere 2 percent by the end of the decade. Until 1967, groundnuts ranked second only to soybeans as a world source of all vegetable oils and consequently groundnut exports, primarily from Nigeria and Senegal, accounted for the bulk of African oilseed trade. In recent years, groundnut sales from the African countries have declined and now rank third behind sunflower seed as a source of vegetable oil.

A combination of factors contributed to a recent decline in peanut exports by the African countries. In Senegal, widespread droughts covering 40-45 percent of the land area during the 1966-67 and 1968-69 seasons drastically reduced the peanut crop. Adverse weather in Nigeria also contributed to reduced peanut production. Perhaps a more important factor in Nigeria was unattractive peanut prices in 1969 which contributed to a 20-percent reduction in peanut acreage as some peanut farmers diverted land to basic food crops.

Exports of palm nuts and kernels, accounting for about one-sixth of the LDC's oilseed exports, declined 38 percent in value during 1960-69.

Sesame seed, while relatively small in volume, pulled ahead at a rapid pace during the decade. In fact, exports of sesame seed, growing at an annual rate of 5.0 percent, advanced faster than other major oilseeds supplied by the developing countries. The absolute value gains in exports of sesame seeds and groundnuts, however, were not sufficient to offset the pronounced reductions in exports of copra and palm nuts. Consequently, the LDC's contribution to the world oilseed market declined \$38 million during 1960-69.

Lower value estimates for oilseed shipments from the developing countries, especially during the 1966-68 period, were in part a reflection of substantially lower world prices for oilseeds resulting from a temporary surplus of fats and oils. Furthermore, expanded processing facilities in the African countries, particularly Senegal and Nigeria, have increased domestic crushing and the increase has been in exports of oils and meals rather than oilseeds as such. The less developed region's increasing internal needs for oilseeds and products also have resulted in lower exportable supplies in recent years.

In contrast to the declining role of the LDC's in the oilseed export market, the developed nations made an impressive export showing during the 1960's. Oilseeds supplied by the developed countries were valued at \$1.01 billion in 1967-69, compared with \$515 million at the beginning of the decade. The value gain in oilseed exports by the developed countries accounted for nearly all of the increase in world oilseed exports during the 1960-69 period.

Table 8.--Value of principal oilseed exports by developed, less developed, and centrally planned countries, calendar years 1960-69

Economic group and commodity	1960	1961	1962	1963	1964	1965	1966	1967	1968	1969
-- Million dollars --										
Developed:										
Soybeans .....	336	351	414	477	573	660	771	779	815	825
Linseed .....	66	64	56	52	72	67	82	65	69	78
Rape and mustard seed ..	28	31	39	41	46	68	71	71	67	88
Less developed:										
Copra .....	242	183	184	245	231	261	218	168	232	146
Groundnuts .....	178	221	228	231	227	227	252	213	216	209
Palm nuts and kernels ..	118	88	78	92	92	110	92	48	68	61
Sesame seed .....	29	29	36	34	36	34	37	43	42	47
Central planned:										
Soybeans .....	115	43	43	43	61	77	72	73	74	56
Sunflower seed .....	22	23	27	21	30	32	56	70	66	70
Rape and mustard seed ..	5	1	1	1	1	8	18	17	25	11
Groundnuts .....	7	2	2	3	10	12	15	18	18	13

Source: Data obtained from FAO, Trade Yearbook, 1966 and 1970.

Since soybeans account for four-fifths of all oilseed exports from the developed markets, the rapid expansion in soybean exports (12.0 percent per year) greatly influenced the overall gain in oilseed shipments. More specifically, the developed countries' share of the world oilseed market was boosted largely by the increased foreign demand for soybeans, supplied mainly by the United States.

During the 1960's, rising per capita incomes generated a strong demand for more meat and other high-protein foods. To meet this demand, many countries accelerated efforts to increase and up grade their livestock production, requiring soybeans from a reliable and readily accessible source. In response to growing soybean requirements, U.S. soybean exports rose from \$362 million in 1960-62 to \$797 million in 1967-69. The \$435 million value gain in U.S. soybean exports accounted for roughly nine-tenths of the increase in oilseed shipments from the developed countries and over four-fifths of the value increase in world oilseed exports.

Sizable gains were also evident in exports of linseed and rape and mustard seed, the other major oilseeds exported by the developed countries. Combined rape and mustard seed exports, however, registered the most significant percentage increase during the decade -- 127 percent.

One of the highlights of the world's oilseed industry during the 1960's was the spectacular expansion in production and trade of certain oilseeds in the U.S.S.R. and, to a lesser extent, in Mainland China and the East European countries. While these centrally planned countries accounted for less than one-tenth of world oilseed exports in the 1960-69 period, their oilseed exports have been rapidly expanding at an annual rate of 12.7 percent since 1960. Soybeans, sunflower seed, rape and mustard seeds, and groundnuts are the principal oilseeds supplied by the centrally planned countries. Rapid growth in oilseed exports from these countries has been largely due to outstanding gains in exports of sunflower seed.

Sunflower seed, introduced as an oilseed crop toward the middle of the 19th century, was of little significance in international trade until recently. This reflected the relatively small size of the world crop and the fact that in many of the principal producing countries output was needed to meet domestic requirements. Virtually all of the sunflower seed produced by Argentina, Uruguay, and Chile is currently for domestic use. However, with the pronounced expansion in sunflower seed started largely by the U.S.S.R. in the late 1950's, exports of this commodity almost tripled, to the \$69 million level, by 1967-69. The substantial increase in sunflower seed sales accounted for better than half the total gain in oilseed exports by centrally planned countries.

While soybeans, exported primarily by Mainland China, continued to hold the lead in oilseed exports from the centrally planned countries, growth in soybean exports from this source has been extremely slow -- 1.1 percent per year. This slow growth pace in soybean exports since 1961 has been largely a reflection of Russia's increased sunflower seed output, aimed at replacing soybean imports from Mainland China.

#### Principal Market Outlets for Oilseeds

The developed countries provided a market for roughly nine-tenths of the world's oilseed output during the 1960's. Oilseed purchases were largely concentrated in the European Community (EC) and Japan. Total oilseed purchases by these countries since the mid-1960's have averaged \$1 billion annually, 60 percent of world exports. Oilseed imports by Japan rose to \$375 million in 1967-69 twice the level in 1960-62. Oilseed purchases by the EC advanced to \$677 million, a fourth over the level at the beginning of the decade (table 9).

As oilseed imports have grown, the origin of these imports has changed substantially since 1965. Until 1966, about 60 percent of EC oilseed purchases originated in the

Table 9.--Principal markets for oilseeds, and shares of world exports, calendar years 1960-69

Area	1960	1961	1962	1963	1964	1965	1966	1967	1968	1969
-- Million dollars --										
Western Europe:										
European Community ...	526	542	559	550	630	690	780	700	680	650
European Free Trade Association ...	240	249	258	230	215	245	235	220	205	185
Other .....	14	12	14	20	25	65	85	110	115	115
Total Western Europe .....	780	803	831	800	870	1,000	1,100	1,030	1,000	950
Japan .....	171	184	193	245	245	295	370	350	405	370
-- Percent of world oilseed exports --										
Western Europe:										
European Community ...	41.4	46.7	45.5	40.2	42.1	41.6	42.8	40.6	38.2	37.0
European Free Trade Association ...	18.9	21.5	21.0	16.8	14.4	14.8	12.9	12.8	11.5	10.5
Other .....	1.1	1.0	1.1	1.5	1.7	3.9	4.7	6.4	6.5	6.5
Total Western Europe .....	61.3	69.2	67.7	58.5	58.2	60.4	60.4	59.8	56.1	54.0
Japan .....	13.4	15.9	15.7	17.9	16.4	17.8	20.3	20.3	22.7	21.0

Source: Data obtained from FAO, Trade Yearbook, 1966 and 1970. United Nations, Monthly Bulletin of Statistics, May 1969-71.



LDC's, but by 1969 the share imported from these countries had dropped to about 38 percent. Much of this downtrend was offset by a countertrend in oilseeds from the developed suppliers. In 1967-69, developed countries accounted for 55 percent of the EC's oilseed imports, double the share in 1960-62.

Throughout the decade, developed countries continued to be the principal suppliers of Japan's oilseed imports. However, their share showed a slight downtrend from 71 percent in 1960-62 to 66 percent in 1967-69. The LDC's also accounted for a declining share of Japan's oilseed imports during the decade. The share originating in the centrally planned countries, however, increased to 16 percent of Japan's oilseed imports in 1967-69, compared with about 1 percent in 1960-62.

In essence, substantial oilseed imports by the EC and Japan were largely responsible for boosting total oilseed imports of developed countries to \$1.6 billion by 1967-69 -- a 45-percent advance over the beginning of the decade.

11-33



## SPECIAL in this issue

---

SUMMER EXPORT PRICES ROSE; IMPORT PRICES CONTINUED TO DROP //

by  
Hans G. Hirsch <sup>1/</sup>

U.S. corn exporters received an average \$1.46 a bushel in the summer (July-September), the same as a year earlier. Unlike last summer, however, when both farm and export prices firmed because of corn blight damage, prices dropped through the summer. More recently, in October, the farm price of corn was \$1 a bushel, the lowest in 3 years.

Export prices of wheat, at \$1.69 a bushel, and of sorghum grain, at \$1.45 a bushel, this summer were 7 and 15 percent, respectively, above year-earlier prices. By October, however, the farm prices of these grains were below year-earlier levels. Wheat flour was exported at \$4.10 a hundredweight during July-September, 11 percent above a year earlier.

Prices of soybeans and products were up significantly this summer. However, unlike grain prices, the soybean price received by farmers continued above a year earlier. A realignment of soybean product prices during the past year resulted in a 20-percent rise in the export price of soybean oil from summer 1970 to summer 1971. The soybean meal price increased by only 3 percent, but the soybean price gained 15 percent.

The quarterly cotton price of 30.6 cents a pound was 18 percent higher than a year earlier and far above the 22.6-27.5 cent range of the last 7 years. Moreover, export volume almost doubled. Thus, the value of cotton exports during the summer quarter was 2.2 times as much as a year earlier.

The export unit value of flue-cured tobacco continued a long uptrend, rising 3 percent above the summer 1970 level. The price of nonfat dry milk rose sharply to 29.4 cents a pound, 14 percent more than a year earlier and about double the price of 5 years earlier.

Only rice and inedible tallow prices were down, both by 2 percent. The inedible tallow price moved cyclically from a spring 1965 peak of 9.3 cents a pound to a summer 1968 trough of 5.7 cents, and from another peak of 9.1 cents last spring to 8.7 cents this summer.

The unit value of U.S. rice exports has fluctuated less than the Thai rice export price since the mid-1960's. Thai rice, often considered the leading indicator of rice prices in the world market, dropped 7 percent from summer 1970 to summer 1971, compared with a 2-percent drop in the unit value of U.S. rice exports during the period. Moreover, the

---

<sup>1/</sup> Agricultural Economist, Trade Statistics and Analysis Branch, Foreign Development and Trade Division, Economic Research Service.

April-June 1971 export price of U.S. rice was a record 9.6 cents a pound, while the Thai export price was at a long-time low of 5.5 cents a pound. The difference typically has been much smaller:

Rice export price

Summer quarter	U.S.	Thailand	Difference
— Cents per pound —			
1971 .....	8.7	6.1	2.6
1970 .....	8.8	6.5	2.3
1969 .....	8.3	8.7	-.4

The price increases in 12 leading U.S. export commodities between summer 1970 and a year later averaged 8.1 percent, slightly less than the 10.8-, 10.5- and 10.0-percent price increases for these commodities during the 3 preceding quarters. The price increase for the 12-month period ended last September over a year earlier was thus 10.1 percent. This year-to-year price increase was the highest for any 12-month period, at least since the summer of 1965.

All 12 leading commodity export prices increased. Rice and flue-cured tobacco prices rose the least, 1-2 percent. Prices of soybeans, soybean oil, and sorghum grains, on the other hand, climbed the most, 15-16 percent. Closest to the 10.1-percent average were the 12-percent increases in corn, cotton, and nonfat dry milk prices. Wheat, wheat flour, soybean meal, and inedible tallow prices increased 4-8 percent.

Import prices, by contrast, were down sharply. The quarterly import price index, 94.5 percent of a year earlier, was the lowest since the fourth quarter of 1965.

The price of coffee, the leading import item, dropped 15 percent from summer of 1970, and was below 40 cents a pound for the first time since late 1969. At that time, in response to the serious Brazilian freeze earlier that year, the coffee price began a climb, from a long-time trough of 31.8 cents in summer 1969 to a long-time record of 46.5 cents a year later. The price held relatively stable at 45.2 cents during the year ended last March, but then declined heavily during the spring and summer quarters. Thus, for the year ended September, the price was still slightly above a year earlier.

The quarterly rubber price was 15.3 cents a pound, 16 percent below a year earlier. The price decline was even steeper for the year ended in September: 15.7 cents a pound, a fourth below the previous year. Cocoa beans were down 13 percent to 24.2 cents a pound on a quarterly basis and down 20 percent to 27.5 cents a pound for the year ended September.

The price of bananas, the fourth major tropical import item, tended to be relatively stable in the past. This was attributed to the existence of some degree of vertical integration in the industry. However, the July-September quarterly price dropped to 4.3 cents a pound, the lowest in at least 7 years and 10 percent below a year earlier. For the 12-month period, the banana price was 4.4 cents, down 7 percent from the previous year.

Quarterly price drops of 10-16 percent for the 4 leading tropical import products may have significant implications for the tropical countries of origin. Although aggregate U.S. payments for these 4 products are up because of the greatly increased volume of coffee and rubber imports, the low prices for tropical products may affect the purchasing power of their suppliers for the goods they import from their trading partners, notably the United States.

Prices of 3 other import products, ham, wine, and clothing wool, were down 6-8 percent on a quarterly basis. Ham and wine prices declined slightly less on a 12-month basis; but wool was down 13 percent to 47 cents a pound, for the 12 months, an extremely low price. At the same time, the quantity of clothing-wool imports also dwindled to barely 75 million pounds, 57 percent of a year earlier and less than half the volume of 2 years ago.

Sugar, beef and veal, cattle (other than for breeding), and tobacco were the only import commodities with higher prices. The sugar price is administered under the provisions of the Sugar Act, and in line with changes in the parity index. Under the Sugar Act Amendments of 1971, the price objective in the future will change in line with the average change of the parity index and the more slowly rising wholesale price index.

The unit value of imported cattle has trended upward for years. Similarly, the unit value of imported beef and veal has risen for at least 7 years. The beef and veal value increased 6.5 percent over a year earlier in the summer quarter, less than the 8.0-percent average year-to-year increase of the last 7 years.

The tobacco price, at 59.5 cents a pound, was slightly above the unusually low price for summer 1970. But for the year ended September, the tobacco price was down 2.3 percent, continuing a downtrend that began in 1966. Fresh tomato imports were seasonally so small that no significance attaches to the 22-percent increase in their price. For the year ended in September, the imported tomato price did not change.

Price movements during the year ended in September for other leading import commodities tended to be similar to the quarterly price movements.

The price declines for all 12 leading import commodities averaged 5.5 percent this summer and 1.8 percent for the year ended September. These rates of decline were more moderate than for tropical products alone, but contrasted sharply to the steep average increase in the prices of export items. The annual terms of trade (export price index divided by import price index) stood at an alltime high of 112.1 percent. The quarterly terms of trade were even higher — 114.4 percent of a year earlier — but slightly lower than during the April-June quarter.

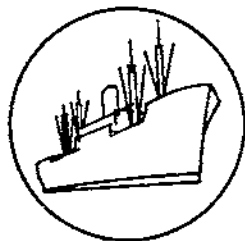
All quantity indexes obtained as byproducts in the calculation of the price indexes were up. The quarterly import quantity index stood at 131.4 percent of a year earlier, implying heavily accelerated imports in anticipation of dock strikes at East Coast and Gulf ports. Annual import quantities were up 6.6 percent; annual exports were up 5.5 percent, and quarterly exports, 8.0 percent.

Table 10.--Unit values of 24 leading U.S. agricultural trade commodities, years and quarters ending September 1971 1/

Commodity	Unit	Unit value					
		Year ending September			Quarter ending September		
		1971	1970	<u>1971</u> 1970	1971	1970	<u>1971</u> 1970
		Dollars	Dollars	Percent	Dollars	Dollars	Percent
<b>Export commodities:</b>							
Wheat .....	Bu.	1.675	1.553	107.9	1.686	1.571	107.3
Wheat flour .....	Cwt.	3.987	3.815	104.5	4.102	3.679	111.5
Corn .....	Bu.	1.538	1.377	111.7	1.463	1.457	100.4
Sorghum grain .....	Bu.	1.451	1.256	115.5	1.452	1.217	119.3
Soybeans .....	Bu.	3.086	2.667	115.7	3.216	2.805	114.7
Soybean meal .....	Cwt.	4.438	4.173	106.4	4.464	4.327	103.2
Soybean oil .....	Lb.	.143	.124	115.3	.155	.129	120.2
Cotton .....	Lb.	.272	.244	111.5	.306	.260	117.7
Tobacco, flue-cured .....	Lb.	1.101	1.033	101.7	1.101	1.067	103.2
Rice, milled .....	Cwt.	8.356	8.285	100.9	8.582	8.766	97.9
Tallow, inedible .....	Cwt.	8.983	8.483	105.9	8.718	8.938	97.5
Nonfat dry milk .....	Lb.	.266	.238	111.8	.294	.259	113.5
Average, i.e., index number 2/ .....				110.1			108.1
<b>Import commodities:</b>							
Coffee .....	Lb.	.420	.415	101.2	.395	.465	84.9
Sugar .....	Cwt.	7.121	6.909	103.1	7.213	6.946	103.8
Beef and veal, fresh, chilled, or frozen .....	Lb.	.523	.503	104.0	.544	.511	106.5
Hams .....	Lb.	.842	.873	96.4	.811	.880	92.2
Rubber .....	Lb.	.157	.208	75.5	.153	.183	83.6
Cocoa beans .....	Lb.	.275	.342	80.4	.242	.278	87.1
Bananas .....	Cwt.	4.425	4.799	92.9	4.272	4.732	90.3
Wines .....	Gal.	4.557	4.800	94.9	4.611	4.941	93.3
Tobacco .....	Lb.	.603	.617	97.7	.595	.582	102.2
Cattle, dutiable .....	No.	105.045	92.479	113.6	154.560	145.162	105.5
Tomatoes .....	Lb.	.148	.148	100.0	.148	.121	122.3
Wool, except free in bond .....	Lb.	.474	.546	86.8	.470	.501	93.8
Average, i.e., index number 2/ .....				93.2			94.5
Terms of trade (Export index ÷ import index) .....				112.1			114.4

1/ Unit values were computed from the value and quantity figures published in Foreign Agricultural Trade of the United States (FATUS). Cotton poundages were obtained from U.S. Bureau of the Census Reports, Supplement to EM 522. Unit values of hides, cattle, whole, were dropped from this table effective with this issue, because FATUS includes this commodity with "hides and skins, including furskins" a basket commodity for which no quantities can be reported.

2/ The index numbers are of "Fisher's Ideal" type.



## International Price Highlights

### SELECTED PRICE SERIES OF INTERNATIONAL SIGNIFICANCE

Most prices were weak in October in comparison with September and also with October 1970 (table 11).

Corn prices were hardest hit. Reflecting a change from scarcity to surplus, the prices of U.S. No. 2 yellow corn, f.o.b. Gulf ports, and of U.S. No. 3 yellow corn, c.i.f. U.K., were both 24 percent below a year ago. These prices dropped in November last year but peaked in January and again in June. In October 1971, the f.o.b. Gulf port price was \$46.06 a metric ton, 30 percent below its June peak, and the c.i.f. U.K. price was \$58.37, 23 percent below its June peak.

October prices of sorghum grain and Argentine corn, c.i.f. U.K., were both 21 percent below a year earlier and 5 percent below September. Despite this drop (compared with a 3-percent decline for U.S. corn), the sorghum grain price continued slightly above the U.S. No. 3 yellow corn price, while the premium of Argentine over U.S. No. 3 corn declined from \$9.59 a metric ton (16 percent) to \$7.97 (14 percent).

Corn price movements in Rotterdam were similar. Argentine corn, priced at \$60.23 a metric ton, was also 14 percent higher than U.S. No. 3 yellow corn. U.S. No. 3 yellow corn was quoted \$52.75 a metric ton, c.i.f. Rotterdam, reflecting the lower price level there than in the United Kingdom.

Like the Gulf port price, the price received by U.S. farmers for corn also dropped 30 percent from its June peak, \$1.43 a bushel (\$56.30 a ton) to \$1.00 (\$39.37 a ton) in October.

Despite the West Coast dock strike, 145 million bushels of corn were exported during July-September, only 4 percent less than a year earlier. With ports on the East and Gulf Coasts struck in October and November, however, export movement is suffering more severely, even though shipping from West Coast ports has resumed. Domestic supplies are damming up because of the strikes, with further price depressing effects. In November, corn production was forecast at 5.55 billion bushels, 152 million more than the October forecast. By contrast, the estimate of sorghum grain production remained virtually unchanged from October, at 890 million bushels, but that amount was 28 percent above last year, almost as high a relative increase as the 35-percent increase in the corn crop.

The soybean price, c.i.f. U.K., at 53.98 pounds sterling a long ton, was virtually unchanged from September but 3 percent below a year earlier. The upward November revision in expected U.S. production from 1,175 to 1,200 million bushels indicates the supply situation might be less tight. Unfortunately, the supply situation is further eased by irretrievable loss of export opportunities due to the dock strike. However, July-September exports exceeded those a year earlier by 30 percent in value, 15 percent in price, and 13 percent in quantity.

Wheat prices abroad were somewhat weak. On a c.i.f. U.K. basis, Australian and Canadian wheats were down almost 1 percent. U.S. No. 2 Hard Winter wheat declined 2 percent from September to October. Compared with a year earlier, these prices were 11-13 percent lower. The Canadian export price, by contrast, was only 7 percent below a year earlier, but was 3 percent below September. The seller's price of U.S. No 2 Hard Winter wheat, f.o.b. Gulf ports, was \$63.29 a metric ton, only fractionally below a year earlier and 2 percent above September, and the buyer's price of that wheat was 1 percent below September but 2 percent above a year earlier. Argentine wheat continued unquoted in both U.K. and Rotterdam markets.

The Thai export price for rice, at \$138.82 a metric ton, although somewhat below month-earlier and year-earlier levels, remained well above the depressed levels that prevailed from February through August.

U.S. cotton was in strong demand. The Liverpool price of Memphis Territory, strict middling, 1-1/16 inch cotton was 36.06 cents a pound, a long-time record high, 2 percent above September and 17 percent above a year earlier. This market strength developed despite a 9-percent crop production increase in the Free World.

Table 11.-- Selected price series of international significance

Year and month	Wheat, Canada, No. 1 Northern, in store Fort William-Port Arthur Export (Class II)		Wheat, U.S. No. 2 Hard Winter, ordinary protein, f.o.b. vessel, Gulf Ports <u>1/</u>						Wheat, U.S. No. 2 Hard Winter, c.i.f. U.K., nearest forward shipment	
	Can. \$/bu.	\$/m.t.	\$/bu.	\$/m.t.	\$/bu.	\$/m.t.	\$/bu.	\$/m.t.	£/l.t.	\$/m.t.
1970										
October .....	1.80	64.62	1.61	59.16	0.13	4.78	1.73	63.57	32.99	77.92
November .....	1.80	64.87	1.65	60.72	.09	3.22	1.74	63.93	33.89	80.05
December .....	1.82	65.85	1.72	63.20	.02	.73	1.74	64.03	33.77	79.77
1971										
January .....	1.82	65.96	1.73	63.57	0	0	1.73	63.57	33.18	78.38
February .....	1.81	66.04	1.72	63.38	0	0	1.72	63.38	32.14	75.91
March .....	1.81	66.00	1.70	62.46	0	0	1.70	62.46	33.06	78.09
April .....	1.81	66.14	1.70	62.46	.01	.36	1.71	62.83	31.97	75.52
May .....	1.74	63.55	1.72	63.29	.04	1.38	1.76	64.67	31.82	75.16
June .....	1.79	64.33	1.68	61.82	.08	2.85	1.76	64.67	31.80	75.11
July .....	1.82	65.68	1.67	61.51	.03	.96	1.70	62.46	31.75	75.00
August .....	1.76	63.69	1.66	60.99	.06	2.12	1.72	63.11	30.21	72.42
September .....	1.74	63.02	1.65	60.63	.04	1.54	1.69	62.10	29.10	70.74
October .....	1.68	61.46	1.63	60.08	.09	3.22	1.72	63.29	28.59	70.10
	Wheat, Northern Manitoba No. 2, c.i.f. U.K., nearest forward shipment		Wheat, Australian, c.i.f. U.K., nearest forward shipment		Corn, U.S. No. 2 yellow, f.o.b. vessel, Gulf Ports		Corn, U.S. No. 3 yellow, c.i.f. U.K., nearest forward shipment		Corn, Argentine, c.i.f. U.K., nearest forward shipment	
	£/l.t.	\$/m.t.	£/l.t.	\$/m.t.	\$/bu.	\$/m.t.	£/l.t.	\$/m.t.	£/l.t.	\$/m.t.
1970										
October .....	35.94	84.89	30.06	71.01	1.54	60.63	31.34	74.04	34.42	81.30
November .....	35.96	84.96	30.06	71.01	1.55	60.92	30.73	72.60	33.00	77.95
December .....	35.56	84.00	30.34	71.66	1.64	64.37	31.85	75.23	32.95	77.83
1971										
January .....	35.38	83.56	30.75	72.63	1.68	66.24	32.33	76.36	33.00	77.95
February .....	35.21	83.17	30.75	72.63	1.67	65.65	32.08	75.78	32.24	76.15
March .....	35.00	82.67	28.75	68.38	1.64	64.76	31.25	73.84	31.04	73.32
April .....	32.52	76.83	29.31	69.23	1.60	63.15	30.21	71.36	29.50	69.68
May .....	32.58	76.95	29.25	69.09	1.59	62.69	29.88	70.57	29.12	68.80
June .....	32.72	77.29	29.25	69.09	1.67	65.75	31.03	73.30	31.58	74.60
July .....	32.38	76.47	28.55	67.44	1.55	61.10	29.54	69.77	31.50	74.41
August .....	2/31.39	2/75.24	27.44	65.77	1.38	54.13	26.67	63.93	29.90	71.67
September .....	2/31.62	2/76.87	26.88	65.33	1.26	49.60	24.48	59.50	28.42	69.09
October .....	2/31.40	2/76.98	26.62	65.27	1.17	46.06	23.81	58.37	27.06	66.34

Continued--



Table 11.--Selected price series of international significance--Continued

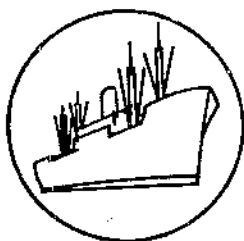
Year and month	Sorghum grain, c.i.f. U.K., nearest forward shipment 3/		Rice, Thailand, White, 5% broken, f.o.b. Bangkok	Soybeans, U.S. No. 2, bulk, c.i.f. U.K., nearest forward shipment		Cotton, American, Memphis Territory, strict middling, 1-1/16", c.i.f. Liverpool	
	£/l.t.	\$/m.t.	\$/m.t.	£/l.t.	\$/m.t.	c/lb.	\$/m.t.
<u>1970</u>							
October .....	30.46	71.95	142.50	55.53	131.17	30.95	682.14
November .....	29.62	69.98	141.60	56.00	132.29	30.83	679.57
December .....	28.17	66.53	138.00	54.46	128.63	30.62	675.16
<u>1971</u>							
January .....	29.76	70.30	139.20	54.70	129.35	30.95	682.32
February .....	29.28	69.15	125.70	54.84	129.53	31.40	692.24
March .....	27.04	63.99	115.20	54.09	127.77	32.02	705.91
April .....	26.24	61.98	111.60	52.12	123.11	30.67	676.15
May .....	26.16	61.80	123.84	53.12	125.49	33.54	739.37
June .....	27.65	65.30	127.20	55.19	130.54	33.48	737.99
July .....	27.40	64.72	129.00	57.30	135.35	34.60	762.79
August .....	26.31	63.05	131.52	55.53	133.12	35.71	787.32
September .....	25.35	61.63	139.89	53.91	131.06	35.25	777.12
October .....	24.01	58.86	138.82	53.98	132.34	36.06	794.98

1/ Buyer's price equals seller's price minus export payment, except for rounding errors.

2/ No. 1 Canadian Western Red Spring Wheat, 13½% protein and 14% protein since mid-September.

3/ U.S./Argentine sorghums transshipped from Continental European ports.

Source: Monthly Bulletin of Agricultural Economics and Statistics, FAO; The Public Ledger, London; Grain Market News, USDA, C&MS; Bangkok Board of Trade; and Cotton and General Economic Review, Liverpool.



## Export Highlights

### U.S. AGRICULTURAL EXPORTS, JULY-OCTOBER 1971

U.S. agricultural exports in July-October 1971 were 3 percent below the \$2.4 billion level achieved in the same period a year ago. Substantial value gains in exports of cotton, oilseeds and products, butter, and tobacco failed to balance greatly reduced shipments of grains, especially feed grains, and wheat, and smaller declines for fruits, nuts, vegetables, and alfalfa meal.

U.S. farm shipments in October totaled \$466 million, 36 percent below October 1970. The longshoremen's strike at East Coast and some Gulf ports and increased grain production in foreign countries were primarily responsible.

July-October cotton exports of 881,000 bales were 63 percent above the level a year earlier. With the West Gulf ports open, exports for October amounted to 195,000 bales -- 8 percent above October 1970. Important markets during July-October for U.S. cotton were Korea, Japan, India, Canada, Philippines, Taiwan, and Indonesia.

Exports of oilseeds and products rose to \$665 million in July-October from \$602 million a year earlier. The 10-percent advance in this category was sparked by higher soybean prices. In terms of quantity, soybean exports in July-October were slightly below the 131 million bushels exported in 1970. However, the value of soybean exports totaled \$397 million in July-October 1971, against \$371 million in the same period last year.

Soybean and cottonseed oils totaled 687 million pounds, compared with 630 million pounds in July-October 1970. Exports picked up to register a \$21 million advance over the previous year's level, despite the expected substantial world gains in production of copra, palm oil, and rapeseed.

Protein meal exports of 1.5 million short tons amounted to a 10-percent increase over July-October 1970.

Tobacco exports including cut leaf totaled 173 million pounds in July-October, about the same as in the previous year. Principal markets for U.S. tobacco were the European Community (EC), United Kingdom, Thailand, Switzerland, Sweden, South Vietnam, and Japan. In July-September, tobacco exports were up 44 percent, mainly in anticipation of the strike.

U.S. exports of grains and preparations were down 18 percent in July-October, mainly because of the sharp decline in shipments during October. Exports in October 1970 were very high, reflecting the short grain supply in the EC and the rest of Western Europe last year. Reduced wheat shipments during October accounted for two-fifths of the decline in grain shipments. Wheat and products totaled 201 million bushels compared with 243 million in July-October 1970. India, Brazil, Japan, Pakistan, Venezuela, the Netherlands, and the United Kingdom were big outlets during July-October.

Table 12.--U.S. agricultural exports: Value by commodity,  
July-October 1970 and 1971

Commodity	July-October		Change
	1970	1971 <sup>1/</sup>	
	-- Million dollars --		Percent
Animals and animal products:			
Dairy products .....	47	52	+11
Fats, oils, and greases .....	82	82	---
Hides and skins .....	50	52	+4
Meats and meat products .....	45	48	+7
Poultry products .....	22	20	-9
Other .....	26	29	+12
Total animals and products .....	272	283	+4
Cotton, excluding linters .....	69	133	+93
Feeds and fodders, excl. protein meals:			
Corn byproducts .....	14	15	+7
Alfalfa meal .....	13	4	-69
Other .....	27	21	-22
Total feeds and fodders, except oil cake and meal .....	54	40	-26
Fruits and preparations .....	133	121	-9
Grains and preparations:			
Feed grains, excluding products .....	420	298	-29
Rice .....	104	93	-11
Wheat and products .....	386	342	-11
Other .....	27	39	+44
Total grains and preparations .....	937	772	-18
Nuts and preparations .....	29	23	-21
Oilseeds and products:			
Cottonseed and soybean oils .....	83	104	+25
Soybeans .....	372	397	+7
Protein meal .....	116	132	+14
Other .....	31	32	+3
Total oilseeds and products .....	602	665	+10
Tobacco, unmanufactured .....	173	176	+2
Vegetables and preparations .....	59	48	-19
Other .....	75	80	+7
Total exports .....	2,405	2,341	-3

<sup>1/</sup> Preliminary

Feed grain exports totaling 5.2 million tons were down sharply from the 7.8 million tons exported in July-October 1970.

Rice exports of 11.7 million 100-pound bags were down from the 13.3 million bags shipped in the first 4 months of 1970/71.

Exports of fruits and vegetables were off in July-October 1971/72 because of the strike. Fruit and vegetable shipments totaled \$169 million compared with \$192 million a year earlier.

Exports of animals and animal products showed a 4-percent gain from a year earlier. Shipments of dairy products, inedible tallow, meats, and hides and skins were up during the first 4 months of 1971/72.

July-October exports to most European countries advanced while those to Asia showed little change. U.S. exports of farm products to the EC advanced by 4 percent to \$567 million. All members of the EC except Belgium took more U.S. farm commodities in July-October. But the advance for Italy accounted for most of the overall increase.

Substantial declines in exports to Japan, Korea, Taiwan, and South Vietnam more than offset gains to India, Pakistan, Ceylon, Thailand, Syrian Arab Republic, and Afghanistan. Exports to Africa advanced to Morocco, UAR, Guinea, Nigeria, Congo, and the Republic of South Africa. Advances in Latin America to Brazil, Venezuela, Colombia, Paraguay, Argentina, Jamaica, Guatemala, Panama, and Honduras more than offset declines to Mexico, Costa Rica, and Chile.

U.S. agricultural exports to Japan, the top country market, dropped by one-fifth in July-October. Most of the decline was in grains and preparations, which fell by nearly 50 percent. The longshoremen's strike on the West Coast caused most of a drop of almost two-thirds in wheat exports to Japan. But the decline in feed grains stemmed from increased competition from other suppliers, especially Australia and Thailand. The soybean export value advanced slightly because of higher prices and stepped-up shipments in anticipation of the longshoremen's strike at East Coast and Gulf ports. Cotton exports were also unusually heavy during July-October because of the strike threat and because relatively tight world supplies encouraged Japan to purchase earlier in the season. Moreover, the opening of the West Coast ports in October also pushed shipments from these ports to a high level. The decline in most other commodities -- fruits and vegetables, alfalfa meal, and hides and skins -- is directly related to the longshoremen's strike.

Exports to the United Kingdom advanced slightly to \$200 million. The increase can be traced to a gain in exports of butter, which totaled over \$11 million in July-October 1971 compared with none during the like months in 1970. Exports of cotton also advanced, but shipments of most other products including wheat and tobacco declined.

Exports of farm products to Canada (including transshipments) fell by 6 percent. Most of this decline occurred for the commodities (grains) that are transshipped from Canadian ports. Movement of fruits and vegetables, our principal exports to Canada, gained by 9 percent. Shipments of soybeans, cotton, tobacco, and hides and skins also advanced.

U.S. agricultural exports to Spain in July-October 1971 were 48 percent above the level of a year ago. The pickup in soybeans prior to the strike accounted for most of the increase. Soybean exports to Spain were valued at nearly \$30 million in July-October 1971, over one-fifth above the level for these months of 1970. Spain also purchased more inedible tallow, cotton, tobacco, and feed grains.

Table 13.--U.S. exports to the EC: Value by commodity,  
October and July-October 1970-71

Commodity	October		July-October	
	1970	1971	1970	1971
-- 1,000 dollars --				
Variable-levy commodities: <u>1/</u>				
Feed grains .....	46,066	16,743	134,211	131,978
Corn .....	38,500	16,143	115,890	128,088
Grain sorghums .....	3,121	600	12,377	3,728
Barley .....	1,118	0	1,333	162
Oats .....	3,327	0	4,611	0
Rice .....	2,231	573	5,247	5,058
Rye grain .....	0	0	0	272
Wheat grain .....	9,503	3,686	28,683	22,385
Wheat flour .....	71	94	324	410
Beef and veal, excl. variety meats ..	30	20	191	148
Pork, excl. variety meats .....	26	35	50	103
Lard <u>2/</u> .....	108	32	346	84
Dairy products .....	9	1	49	160
Poultry and eggs .....	2,055	900	5,567	4,003
Live poultry .....	310	127	821	605
Broilers and fryers .....	33	34	148	256
Stewing chickens .....	0	0	0	2
Turkeys .....	1,653	677	4,271	2,685
Other fresh poultry .....	0	0	0	1
Eggs .....	59	62	327	454
Other .....	646	137	2,202	1,686
Total .....	60,745	22,221	176,870	166,287
Nonvariable-levy commodities:				
Canned poultry <u>3/</u> .....	0	0	8	32
Cotton, excl. linters .....	2,242	4,657	4,307	15,772
Fruits and preparations .....	7,116	4,270	27,436	17,686
Fresh fruits .....	507	902	9,031	9,099
Citrus .....	417	876	8,885	8,945
Oranges and tangerines .....	9	211	4,505	3,393
Lemons and limes .....	232	584	3,212	4,838
Grapefruits .....	176	81	1,120	714
Other .....	0	0	48	0
Apples .....	0	0	0	0
Grapes .....	1	0	1	71
Other .....	89	26	145	83
Dried fruits .....	1,561	1,565	5,019	2,312
Raisins .....	279	183	683	537
Prunes .....	942	1,077	3,072	1,446
Other .....	340	305	1,264	329
Fruit juices .....	511	128	2,999	2,290
Orange .....	327	54	1,966	1,507
Grapefruit .....	26	9	342	348
Other .....	158	65	691	435
Canned fruits <u>4/</u> .....	4,504	1,611	10,187	3,819
Peaches .....	2,575	572	4,587	778
Fruit cocktail .....	606	339	1,422	540
Pineapples .....	1,073	643	3,513	2,089
Other .....	250	57	665	412

Continued--

Table 13--U.S. exports to the EC: Value by commodity,  
October and July-October 1970-71--Continued

Commodity	October		July-October	
	1970	1971	1970	1971
-- 1,000 dollars --				
Nonvariable-levy commodities--Con.:				
Other fruits .....	33	64	200	166
Vegetables and preparations .....	2,720	1,574	6,867	4,107
Pulse .....	1,693	1,269	3,500	1,899
Dried beans .....	780	632	1,692	1,243
Dried peas .....	913	637	1,808	656
Fresh vegetables .....	62	16	77	54
Canned vegetables .....	80	32	392	174
Asparagus .....	5	6	119	6
Other .....	75	26	273	168
Hops .....	195	17	374	396
Other vegetables and preparations ..	690	240	2,524	1,584
Hides and skins .....	2,484	2,102	8,907	7,822
Cattle hides .....	1,291	982	4,825	4,299
Calf and kip skins .....	105	65	238	449
Other .....	1,088	1,055	3,844	3,074
Oilseeds and products .....	75,017	37,736	204,327	227,786
Oil cake and meal .....	18,570	9,969	75,062	88,117
Soybean .....	17,234	8,858	70,638	83,491
Other .....	1,336	1,111	4,424	4,626
Oilseeds .....	55,643	26,209	125,663	128,786
Soybeans .....	55,162	26,054	121,322	127,291
Flaxseeds .....	351	0	3,133	20
Other .....	130	155	1,208	1,475
Vegetable oils .....	804	1,558	3,602	10,882
Cottonseed .....	0	176	380	3,655
Soybean .....	0	1	96	37
Linseed .....	0	42	618	131
Other .....	804	1,339	2,508	7,060
Tallow <sup>3/</sup> .....	3,878	1,912	11,683	10,286
Tobacco, unmanufactured .....	11,495	158	47,318	60,242
Variety meats, fresh or frozen <sup>3/</sup> .....	3,486	4,588	13,567	15,835
Nuts and preparations .....	7,331	5,353	10,428	8,548
Corn byproducts, feed <sup>5/</sup> .....	3,457	4,497	13,669	14,661
Food for relief and charity .....	8	0	208	11
Other .....	6,315	2,682	20,417	17,994
Total nonvariables .....	125,549	69,529	369,142	400,782
Total EC .....	186,294	91,750	546,012	567,069

<sup>1/</sup> Grains, poultry, and pork were subject to variable levies beginning on July 30, 1962; rice, on Sept. 1, 1964; and beef and dairy products, on Nov. 1, 1964. <sup>2/</sup> Lard for food is a variable-levy commodity, while lard for industrial use is bound in the General Agreement on Tariffs and Trade (GATT) at 3 percent ad valorem. U.S. lard is for food use. <sup>3/</sup> Although canned poultry, tallow, and variety meats are subject to variable levies, these cannot exceed the amount of import duties bound in GATT. <sup>4/</sup> Variable levy on sugar-added content. <sup>5/</sup> Mainly corn gluten feed and meal, which are nonvariable-levy commodities; but may contain small quantities of other corn products, subject to variable levies (see "Export Highlights, March 1970").



## Import Highlights

---

### U.S. AGRICULTURAL IMPORTS, JULY-OCTOBER 1971

During the first 4 months of 1971/72, U.S. agricultural imports totaled nearly \$2.0 billion, 7 percent more than in corresponding months last year. Supplementary commodities gained 6 percent to \$1.25 billion, and complementary products rose 9 percent to \$753 million. Larger purchases of beef, sugar, vegetables, tobacco, and wines accounted for most of the expansion in supplementary items. Among complementary commodities, increases for coffee, rubber, tea, and black pepper more than offset reductions in bananas and cocoa. Pre-strike inventory buildup raised imports to record levels in the July-September period.

Agricultural imports in October began to recede from peak levels reached in July-September. At \$302 million, these imports were the lowest since January 1969 during East Coast and Gulf longshoremen's strikes. Strikes at Atlantic and Gulf ports began October 1 when labor contracts expired. Most ports were closed, but some Texas locations remained open until mid-November. Temporary restraining orders by Federal courts reopened a few locations such as New Orleans, Mobile, Baltimore, and Philadelphia at various times during October and early November. All East Coast and Gulf ports reopened for at least 80 days on November 29 after a court injunction was issued.

Meanwhile, Great Lakes and West Coast ports remained open. A Taft-Hartley Act injunction reopened West Coast ports on October 8 after a 100-day strike. Only \$87 million in agricultural imports moved through West Coast customs districts in July-September 1971, compared with \$181 million during the same months of 1970. At the same time, entries through Atlantic and Gulf Coast ports rose 36 percent to \$1.47 billion, and Lake port imports went up 12 percent to \$114 million.

Other factors tending to depress imports in October were the appreciation in value of foreign currencies and the U.S. import surcharge. Some West European exchange rates appreciated by as much as 10 percent in relation to the dollar, making imports more expensive. The 10-percent surcharge affected only about 27 percent of U.S. agricultural imports. The surcharge had little or no effect in September, when imports reached a record \$651 million, because of large surcharge-exempt items such as meat, sugar, coffee, bananas, tea, cocoa, rubber, spices, and essential oils. Commodities on which the surcharge applied, including tobacco, wines, olives, cashew nuts, and preserved beef, also showed sharp increases in September. Imports of both surcharge-exempt and nonexempt items fell off during October, chiefly because of large pre-strike inventory accumulation.

U.S. agricultural imports from Mainland China resumed in August after being banned for nearly 20 years. The agricultural import total in August and September amounted to \$2.1 million. On April 14, 1971, the President announced that restrictions on imports from Mainland China would be removed. The Treasury Department subsequently issued regulations allowing Chinese goods to enter under general import licensing procedures. Major items from Mainland China in August and September were hog bristles (159,000 pounds worth \$983,000), unground cassia (1.4 million pounds, \$836,000), and

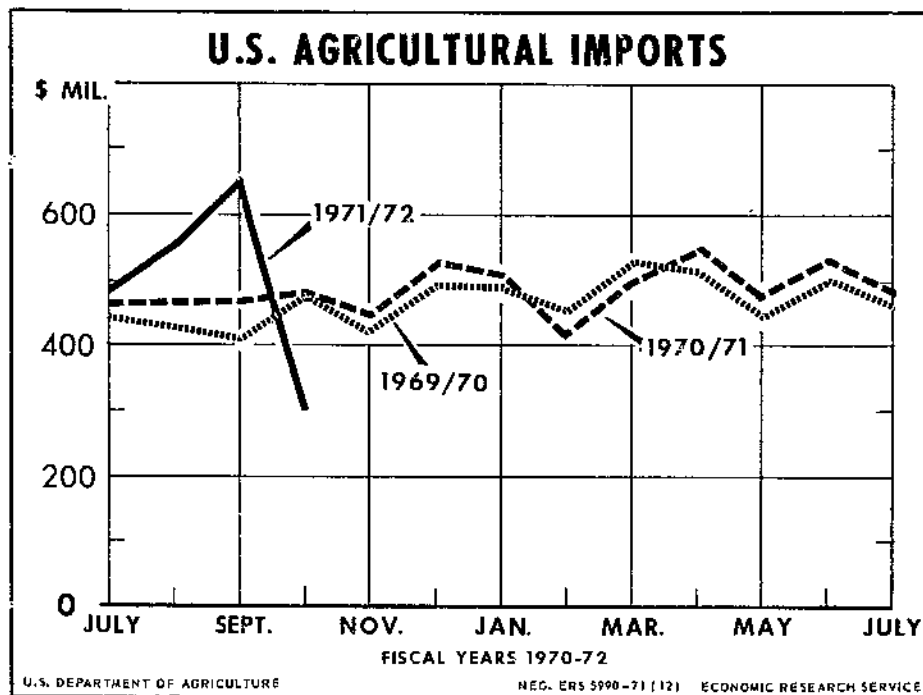


Figure 1

cassia oil (53,000 pounds, \$127,000). In addition, shipments from China included cashmere goat hair (\$77,000), raw silk (\$33,000), camel hair (\$31,000), feathers (\$20,000), prepared vegetables (\$9,000), prepared fruits (\$4,000), nuts (\$3,000), noodles (\$3,000), soy sauce (\$1,000), and duck eggs (\$1,000).

Virtually no agricultural imports from Mainland China have been recorded since 1952, when they totaled \$27 million. Most of those entries came from stocks in bonded warehouses; the embargo on Chinese goods became effective in late 1951 during the Korean war. Before the war, the level of U.S. agricultural imports from China reached \$96 million. They consisted mainly of hog bristles, tung oil, and carpet wool.



Table 14.--U.S. agricultural imports: Value by commodity,  
July-October 1970 and 1971

Commodity or commodity group	July-October		Change
	1970	1971 <sup>1/</sup>	
	-- Million dollars --		Percent
<u>Supplementary</u>			
Animals and animal products:			
Cattle and calves .....	21	18	-14
Dairy products and eggs .....	43	43	0
Hides and skins, including furskins .....	31	25	-19
Meats and meat products, excluding poultry:			
Beef and veal .....	261	292	+12
Pork .....	85	77	-9
Other meats and products .....	18	16	-11
Sausage casings .....	10	9	-10
Wool, apparel .....	14	10	-29
Other animals and animal products .....	33	28	-15
Total animals and products .....	516	518	0
Cotton, raw, excluding linters <sup>2/</sup> .....	2	2	-21
Feeds and fodders, excluding oil cake .....	10	10	0
Fruits and preparations .....	40	39	-2
Grains and preparations .....	26	26	0
Nuts and preparations, edible .....	40	41	+3
Oilseeds, oilnuts, and products:			
Coconut oil .....	25	25	0
Copra .....	19	5	-74
Olive oil .....	6	7	+17
Other oilseeds and products .....	20	23	+15
Seeds and nursery stock, excluding oilseeds .....	17	14	-18
Sugar and molasses:			
Sugar, cane .....	267	294	+10
Molasses, inedible .....	13	12	-8
Tobacco, unmanufactured .....	49	64	+31
Vegetables and preparations .....	46	54	+17
Wines and malt beverages:			
Wines .....	48	74	+54
Malt beverages .....	12	13	+8
Other supplementary vegetable products .....	25	25	0
Total supplementary products .....	1,181	1,246	+6
<u>Complementary</u>			
Bananas, fresh .....	62	52	-16
Cocoa and chocolate:			
Cocoa beans .....	60	48	-20
Cocoa butter .....	6	6	0
Cocoa and chocolate prepared .....	20	18	-10
Coffee:			
Coffee, green or crude .....	382	429	+12
Coffee, soluble .....	18	21	+17
Drugs, crude .....	7	10	+43
Essential oils .....	11	12	+9
Fibers, unmanufactured .....	7	7	0
Rubber, crude:			
Rubber, crude, dry form .....	57	64	+12
Rubber, latex .....	8	9	+13
Silk, raw .....	2	1	-50
Spices .....	15	20	+33
Tea, crude .....	16	29	+81
Wool, carpet .....	12	15	+25
Other complementary products .....	11	12	+9
Total complementary products .....	694	753	+9
Total agricultural imports .....	1,875	1,999	+7

<sup>1/</sup> Preliminary. <sup>2/</sup> Rounded from \$1.5 million in 1971 and \$1.9 million in 1970.

TABLE 15.--U.S. AGRICULTURAL IMPORTS: QUANTITY AND VALUE BY COMMODITY

COMMODITY	UNIT	JULY-OCTOBER				OCTOBER			
		QUANTITY		VALUE		QUANTITY	VALUE		
		1970 THOU.	1971 1/ THOU.	1970 1,000 DOL.	1971 1/ 1,000 DOL.	1970 THOU.	1971 1/ THOU.	1970 1,000 DOL.	1971 1/ 1,000 DOL.
ALL COMMODITIES	---	---	---	13,424,300	15,424,433	---	---	3,585,900	3,516,639
NONAGRICULTURAL COMMODITIES	---	---	---	11,549,519	13,425,916	---	---	3,105,564	3,214,166
AGRICULTURAL COMMODITIES	---	---	---	1,874,781	1,998,518	---	---	480,336	302,473
SUPPLEMENTARY	---	---	---	1,180,521	1,246,062	---	---	288,705	221,185
ANIMALS AND ANIMAL PRODUCTS	---	---	---	516,210	518,086	---	---	123,209	84,280
ANIMALS, LIVE	---	---	---	33,660	26,301	---	---	8,831	4,737
BABY CHICKS	NO	1,477	1,414	909	849	292	75	174	52
CATTLE, DUTIABLE	NO	125	101	17,324	15,007	44	26	5,711	3,415
CATTLE FOR BREEDING, FREE	NO	8	7	3,547	2,936	2	2	834	662
HORSES	NO	1	1	9,399	5,439	0	0	1,521	332
OTHER	---	---	---	2,480	2,070	---	---	590	276
DAIRY PRODUCTS	---	---	---	41,602	41,539	---	---	12,407	7,683
CHEESE	LB	49,253	51,219	26,343	29,165	15,566	8,791	8,471	5,524
BLUE MOLD, INCLUDING ROQUEFORT	LB	2,487	2,157	1,895	1,830	665	319	501	330
CHEDDAR	LB	1,487	3,940	788	2,022	829	1,429	420	745
COLBY	LB	387	216	123	85	243	48	83	19
EDAM AND GOUDA	LB	4,486	4,204	2,184	2,330	1,199	420	588	219
ROMANO, REGGIANO, PARMESANO	LB	1,685	2,671	1,530	2,481	510	750	491	796
PECORINO	LB	6,285	5,406	4,272	3,505	1,813	960	1,352	583
SWISS	LB	15,471	15,296	8,460	8,752	4,698	2,385	2,603	1,450
OTHER	LB	16,966	17,329	7,091	8,160	5,609	2,479	2,432	1,382
BUTTER	LB	181	211	109	133	88	17	54	10
CASEIN AND MIXTURES	LB	43,974	32,248	9,898	10,750	10,538	5,819	2,479	1,931
ICE CREAM	GAL	4,761	0	4,102	0	931	0	796	0
OTHER	---	---	---	1,150	1,491	---	---	607	218
HIDES AND SKINS, INCLUDING FUR SKINS	---	---	---	31,079	25,116	---	---	6,196	3,095
CALF AND KIP SKINS	LB	2,170	982	679	287	745	145	231	42
CATTLE HIDES	LB	6,692	5,060	944	738	1,386	519	208	67
GOAT AND KID SKINS	LB	445	762	339	631	38	175	18	155
SHEEP AND LAMB SKINS	LB	15,379	13,081	9,953	11,213	2,450	1,309	1,737	1,250
FUR SKINS	---	---	---	16,560	10,579	---	---	3,442	1,356
OTHER	---	---	---	2,604	1,668	---	---	561	225
MEATS AND MEAT PREPARATIONS	LB	662,049	654,071	363,902	384,857	155,240	110,397	85,236	62,177
BEEF AND VEAL	LB	507,667	508,918	260,918	292,440	116,490	90,072	58,813	49,940
CANNED	LB	47,463	40,584	21,041	26,582	13,078	6,989	5,836	4,570
FRESH OR FROZEN	LB	423,246	434,651	214,386	235,757	92,756	79,873	45,608	42,791
PREPARED OR PRESERVED	LB	36,959	33,684	25,491	30,101	10,656	3,210	7,368	2,578
MUTTON, GOAT, AND LAMB	LB	24,226	23,386	9,182	7,776	3,185	3,887	1,161	1,314
PORK	LB	110,428	108,080	84,803	76,719	29,777	13,947	22,995	9,468
FRESH OR FROZEN	LB	19,030	21,141	7,547	7,456	4,294	3,763	1,606	1,384
HAMS AND SHOULDERS, CND, COOKED, ETC	LB	78,738	78,482	68,922	63,620	22,504	9,036	19,436	7,309
OTHER	LB	12,661	8,457	8,334	5,643	2,980	1,148	1,954	775
OTHER	LB	19,728	13,686	8,999	7,923	5,789	2,490	2,267	1,455

CONTINUED--

TABLE 15.--U.S. AGRICULTURAL IMPORTS: QUANTITY AND VALUE BY COMMODITY--CONTINUED

COMMODITY	UNIT	JULY-OCTOBER				OCTOBER			
		QUANTITY		VALUE		QUANTITY		VALUE	
		1970 THOU.	1971 1/ THOU.	1970 1,000 DOL.	1971 1/ 1,000 DOL.	1970 THOU.	1971 1/ THOU.	1970 1,000 DOL.	1971 1/ 1,000 DOL.
POULTRY PRODUCTS	---	---	---	2,202	1,597	---	---	395	323
EGGS, DRIED AND OTHERWISE PRESERVED	LB	721	270	418	163	244	46	163	27
EGGS IN THE SHELL	DOZ	3,726	1,224	1,416	1,038	548	108	184	189
POULTRY MEAT	LB	285	221	368	395	51	68	48	107
OTHER ANIMAL PRODUCTS	---	---	---	43,746	38,676	---	---	10,143	6,265
BEESWAX	LB	1,062	1,117	746	742	354	49	242	33
BONES, HOOPS, AND HORNS,	---	---	---	1,250	1,222	---	---	345	374
BRISTLES, CRUDE OR PREPARED	LB	707	692	2,123	2,407	171	42	543	167
FATS, OILS, AND GREASES	LB	5,638	5,068	521	740	1,517	862	128	101
FEATHERS AND DOWNS, CRUDE, SORTED	LB	1,420	1,522	2,801	2,951	395	162	800	418
GELATIN	---	---	---	4,171	3,696	---	---	1,224	623
HAIR, UNMANUFACTURED	LB	2,460	796	1,780	1,028	337	26	301	120
SAUSAGE CASINGS	---	---	---	9,689	9,093	---	---	2,525	1,345
OSSEIN	LB	2,374	4,316	688	794	399	612	116	211
RENNET	LB	242	230	579	564	58	47	161	76
WOOL, UNMANUFACTURED, EX FREE IN BOND	GLB	28,176	21,132	14,037	10,071	4,183	3,939	2,026	1,993
OTHER	---	---	---	5,361	5,370	---	---	1,733	805
VEGETABLE PRODUCTS	---	---	---	664,311	727,976	---	---	165,495	136,905
COTTON, UNMANUFACTURED	RBA	41	26	3,119	2,208	9	3	803	150
COTTON, RAW	RBA	11	9	1,943	1,538	3	0	560	0
LINTERS	RBA	30	17	1,175	670	6	3	243	150
FRUITS AND PREPARATIONS	---	---	---	40,095	38,772	---	---	11,636	7,604
APPLES, FRESH	LB	13,747	14,680	1,052	878	3,622	4,491	354	182
APPLE AND PEAR JUICES	GAL	4,896	5,636	1,250	1,948	2,406	417	551	284
BLUEBERRIES	LB	10,720	6,293	2,852	1,426	1,298	727	459	181
STRAWBERRIES	LB	23,786	22,293	3,569	2,862	3,801	1,771	528	211
OTHER BERRIES	LB	3,639	10,123	838	1,843	497	6,512	105	1,008
CHERRIES	LB	6,893	5,760	2,128	1,761	2,284	882	713	283
DATES	LB	15	151	1	25	0	38	0	6
FIGS	LB	4,830	2,677	554	462	2,560	1,478	388	250
GRAPES	LB	17,417	6,572	1,645	495	12,971	2,319	1,181	70
MELONS	LB	2,773	2,115	146	67	998	28	61	2
ORANGES, MANDARIN, CANNED	LB	25,657	19,886	5,718	4,208	5,877	4,371	1,340	907
ORANGES, FRESH	LB	13,868	19,737	960	1,040	9,147	6,210	569	305
ORANGE JUICE, CONCENTRATED	GAL	1,245	11,009	362	3,750	0	614	0	215
PEARS, FRESH	LB	3,881	707	506	109	2,541	410	351	68
PEARS, PREP OR PRES	LB	1,549	8,026	199	913	207	583	24	74
PINEAPPLES, CND, PREP OR PRES	LB	91,603	61,386	10,963	7,647	22,055	13,750	2,751	1,743
PINEAPPLE JUICE	GAL	4,706	3,644	1,128	913	2,468	278	572	67
JELLIES AND JAMS	LB	3,043	4,054	851	1,133	806	825	211	216
OTHER	---	---	---	5,373	7,291	---	---	1,478	1,532

CONT INUED--

TABLE 15.--U.S. AGRICULTURAL IMPORTS: QUANTITY AND VALUE BY COMMODITY--CONTINUED

COMMODITY	UNIT	JULY-OCTOBER				OCTOBER			
		QUANTITY		VALUE		QUANTITY		VALUE	
		1970 THOU.	1971 1/ THOU.	1970 1,000 DOL.	1971 1/ 1,000 DOL.	1970 THOU.	1971 1/ THOU.	1970 1,000 DOL.	1971 1/ 1,000 DOL.
NUTS AND PREPARATIONS	---	---	---	39,759	41,285	---	---	11,338	4,324
ALMONDS	LB	89	80	61	61	14	3	9	3
BRAZIL NUTS	LB	20,768	16,277	4,571	4,806	4,143	1,275	1,163	370
CASHEW NUTS	LB	38,734	39,528	23,735	24,016	9,732	4,270	5,962	2,715
CHESTNUTS	LB	2,552	293	571	96	2,283	240	494	64
COCONUT MEAT, FR, PREP, OR PRES	LB	42,594	37,576	5,656	4,854	12,909	7,777	1,639	956
FILBERTS	LB	1,583	1,508	1,020	890	1,106	44	697	25
PISTACHE NUTS	LB	5,250	8,628	3,154	5,668	1,876	9	896	12
WALNUTS	LB	43	17	20	6	13	17	6	6
OTHER	---	---	---	970	689	---	---	472	174
GRAINS AND PREPARATIONS	---	---	---	26,307	26,093	---	---	7,295	5,267
BARLEY	BU	5,283	2,709	6,487	3,264	1,185	429	1,558	433
BARLEY MALT	CWT	222	82	1,051	436	21	9	100	49
CORN	BU	622	569	818	953	177	119	278	236
OATS	BU	434	414	386	361	137	75	106	60
RICE	LB	21,750	54,979	1,096	2,851	5,541	2,282	347	319
RYE	BU	197	236	218	256	12	105	15	97
WHEAT	BU	1	96	0	177	0	1	0	1
WHEAT FLOUR	CWT	29	7	177	47	2	0	14	0
WHEAT GLUTEN	LB	6,877	7,579	1,390	1,786	943	2,232	201	523
BISCUITS, CAKES, WAFERS, ETC	LB	28,867	29,301	10,729	11,445	8,646	6,121	3,566	2,460
BREAD CRUMBS	LB	7,796	7,758	1,092	1,011	2,368	1,759	318	228
BREAD, YEAST-LEAVENED	LB	1,951	1,931	320	383	582	469	100	95
MACARONI, SPAGHETTI, ETC	LB	9,038	9,062	1,707	1,686	2,537	1,944	456	386
OTHER	---	---	---	636	1,438	---	---	237	381
OILBEARING MATERIALS AND PRODUCTS	---	---	---	70,008	59,511	---	---	20,485	19,321
OIL CAKE AND MEAL	STN	3	2	214	99	0	1	11	35
OILSEEDS AND OILNUTS:	---	---	---	23,294	9,515	---	---	5,969	6,015
COPRA	LB	222,573	70,134	19,217	5,196	57,617	70,134	4,831	5,196
SESAME SEED	LB	11,037	11,630	1,896	2,166	2,839	1,736	486	363
OTHER	---	---	---	2,181	2,153	---	---	652	456
VEGETABLE OILS AND WAXES	LB	318,950	358,062	46,501	49,896	106,271	105,849	14,505	13,271
CARNAUBA	LB	2,897	3,383	663	1,274	526	165	171	60
CASTOR OIL	LB	20,195	22,675	2,359	3,057	2,338	3,856	343	524
COCONUT OIL	LB	185,455	212,641	24,510	25,419	63,938	67,810	8,061	8,018
OLIVE OIL, EDIBLE	LB	19,712	21,632	6,317	7,160	4,651	3,886	1,500	1,371
PALM OIL	LB	50,208	58,996	5,628	6,229	23,753	25,672	2,560	2,871
PALM KERNEL OIL	LB	22,983	24,164	3,462	3,935	6,522	521	976	143
TUNG OIL	LB	6,967	6,196	1,311	665	2,179	659	390	69
OTHER	LB	11,333	8,376	2,250	2,159	2,365	1,081	504	215

CONTINUED--

TABLE 15.--U.S. AGRICULTURAL IMPORTS: QUANTITY AND VALUE BY COMMODITY--CONTINUED

COMMODITY	UNIT	JULY-OCTOBER				OCTOBER			
		QUANTITY		VALUE		QUANTITY		VALUE	
		1970 THOU.	1971 1/ THOU.	1970 1,000 DOL.	1971 1/ 1,000 DOL.	1970 THOU.	1971 1/ THOU.	1970 1,000 DOL.	1971 1/ 1,000 DOL.
SUGAR AND RELATED PRODUCTS	---	---	---	291,941	318,199	---	---	60,728	51,574
SUGAR	STN	1,914	2,051	267,472	294,375	372	332	53,245	46,241
MOLASSES, INEDIBLE	GAL	112,395	98,611	13,126	11,746	32,946	20,354	3,869	2,077
MAPLE SUGAR AND SIRUP	LB	4,508	2,374	1,986	1,316	1,576	722	738	444
CONFECTIONERY PRODUCTS	LB	28,109	27,531	7,932	8,953	7,482	5,119	2,300	1,945
HONEY	LB	3,652	3,327	443	571	683	869	90	160
OTHER	---	---	---	984	1,237	---	---	486	706
VEGETABLES AND PREPARATIONS	---	---	---	45,701	54,306	---	---	13,375	12,116
FRESH OR FROZEN:									
BEANS	LB	155	387	22	53	4	0	2	0
CARROTS	LB	25,132	22,475	875	1,045	14,562	11,418	479	495
CUCUMBERS	LB	235	291	11	31	182	0	6	0
DASHEENS	LB	5,729	5,485	429	572	1,430	1,170	112	126
EGGPLANT	LB	0	8	0	6	0	0	0	0
GARLIC	LB	5,077	3,496	939	898	1,170	699	239	189
ONIONS	LB	4,507	5,493	520	759	282	744	32	106
PEAS	LB	403	506	135	154	81	77	25	24
PEPPERS	LB	2,548	1,899	260	263	520	428	46	39
POTATOES, WHITE OR IRISH	CWT	23	50	63	122	20	36	53	80
SQUASH	LB	124	85	9	10	22	9	1	0
TOMATOES	LB	10,223	12,709	1,186	1,598	2,041	3,276	197	199
TURNIPS OR RUTABAGAS	CWT	231	223	856	909	115	111	374	387
OTHER	LB	0	0	1,707	1,982	0	0	523	436
PREPARED OR PRESERVED:									
CASSAVA, FLOUR, STARCH, AND TAPIOCA	LB	61,532	50,754	2,202	2,204	12,977	10,429	486	417
HOPS	LB	269	53	248	44	55	41	46	29
MUSHROOMS, INCLUDING DRIED	LB	7,239	8,771	5,288	6,621	1,525	1,757	1,146	1,325
OLIVES, IN BRINE	GAL	4,922	6,132	11,419	15,966	1,201	1,221	2,981	3,279
ONIONS	LB	1,545	1,158	371	367	491	365	108	107
PEAS, EX DRIED	LB	2,081	3,132	357	719	935	381	143	61
PICKLED VEGETABLES	LB	11,056	15,983	1,595	1,964	4,343	4,629	486	519
TOMATOES	LB	38,472	34,568	3,440	3,138	19,127	7,959	1,676	718
TOMATO PASTE AND SAUCE	LB	28,564	28,042	4,038	3,759	10,945	9,630	1,604	1,248
OTHER	---	---	---	9,731	11,122	---	---	2,609	2,309
OTHER VEGETABLE PRODUCTS	---	---	---	147,380	187,603	---	---	39,834	36,550
BROOMCORN	STN	5	4	2,583	2,483	1	1	627	507
CUT FLOWERS	---	---	---	817	872	---	---	193	261
ESSENTIAL OR DISTILLED OILS	LB	485	570	1,092	1,512	82	63	187	184
FEEDS AND FODDERS, EX OIL CAKE & MEAL	---	---	---	10,410	10,481	---	---	2,411	2,208
FLAVORING EXTRACTS	---	---	---	1,184	1,134	---	---	343	250
JUTE AND JUTE BUTTS, UNMANUFACTURED	LTN	7	4	854	916	1	0	89	36
MALT LIQUORS	GAL	10,042	11,067	12,025	13,337	2,366	1,423	2,810	1,614
NURSERY AND GREENHOUSE STOCK	---	---	---	11,769	10,151	---	---	3,550	3,404
SEEDS, EXCEPT OILSEEDS	LB	17,662	12,615	5,308	4,338	4,904	2,535	1,586	1,003
SPICES	LB	4,211	2,901	1,050	986	1,604	639	357	209
TOBACCO, UNMANUFACTURED	LB	84,118	108,544	49,087	63,666	22,750	19,997	13,363	10,987
WINES	GAL	9,626	16,044	47,616	74,000	2,731	3,269	13,545	15,089
OTHER	---	---	---	3,585	3,725	---	---	774	800

CONTINUED--

TABLE 15.--U.S. AGRICULTURAL IMPORTS: QUANTITY AND VALUE BY COMMODITY--CONTINUED

COMMODITY	UNIT	JULY-OCTOBER				OCTOBER			
		QUANTITY		VALUE		QUANTITY		VALUE	
		1970 THOU.	1971 1/ THOU.	1970 1,000 DOL.	1971 1/ 1,000 DOL.	1970 THOU.	1971 1/ THOU.	1970 1,000 DOL.	1971 1/ 1,000 DOL.
COMPLEMENTARY	---	---	---	694,262	752,456	---	---	191,631	81,288
BANANAS	LB	1,314,640	1,193,201	61,956	51,573	343,444	235,948	15,997	10,681
PLANTAINS	LB	33,387	25,915	1,500	1,093	8,883	4,136	401	209
COFFEE, GREEN	LB	823,981	1,088,305	381,517	429,068	226,661	82,126	103,934	31,678
COFFEE EXTRACTS, ESSENCES, CONCENTRATES	LB	12,898	15,411	17,630	20,900	5,088	993	6,348	1,229
COCOA BEANS	LB	213,654	202,316	60,294	47,954	59,704	31,022	17,508	6,511
COCOA BUTTER	LB	9,988	12,418	6,249	6,411	2,347	1,048	1,412	568
COCOA AND CHOCOLATE PREPARATIONS	LB	80,040	62,191	20,262	17,543	25,295	10,884	7,385	3,691
DRUGS, HERBS, ROOTS, ETC	LB	29,202	21,974	7,422	9,613	11,191	898	2,295	2,338
ESSENTIAL OR DISTILLED OILS	LB	3,681	3,338	10,990	11,627	961	317	2,895	1,499
FIBERS, UNMANUFACTURED	LTN	34	37	6,724	6,943	9	5	1,848	864
RUBBER, CRUDE, NATURAL:									
RUBBER, DRY FORM	LB	320,993	423,683	57,112	64,329	92,081	88,299	15,202	13,093
RUBBER, LATEX	LB	48,292	60,428	8,296	9,451	12,624	11,775	2,046	2,076
SILK, RAW	LB	207	108	1,681	859	33	15	273	125
SPICES:									
PEPPER, UNGROUND, BLACK	LB	11,100	22,268	4,788	9,559	3,611	966	1,555	397
VANILLA BEANS	LB	603	513	2,732	2,082	139	64	579	91
OTHER	LB	20,434	21,288	7,647	8,655	6,358	2,136	2,295	624
TEA	LB	40,494	69,349	15,755	28,632	11,971	4,631	5,039	2,135
WOOL, UNMANUFACTURED, FREE IN BOND	GLB	33,790	41,307	11,649	15,251	6,581	3,288	2,298	1,236
OTHER	---	---	---	10,058	10,914	---	---	2,322	2,241

1/ PRELIMINARY

TABLE 16.--U.S. AGRICULTURAL EXPORTS: QUANTITY AND VALUE BY COMMODITY

COMMODITY	UNIT	JULY-OCTOBER				OCTOBER			
		QUANTITY		VALUE		QUANTITY		VALUE	
		1970 THOU.	1971 1/ THOU.	1970 1,000 DOL.	1971 1/ 1,000 DOL.	1970 THOU.	1971 1/ THOU.	1970 1,000 DOL.	1971 1/ 1,000 DOL.
ALL COMMODITIES	---	---	---	14,013,100	13,779,461	---	---	3,901,700	2,840,966
NONAGRICULTURAL COMMODITIES	---	---	---	11,609,637	11,438,378	---	---	3,171,834	2,374,718
AGRICULTURAL COMMODITIES	---	---	---	2,403,463	2,341,083	---	---	729,866	466,248
ANIMALS AND ANIMAL PRODUCTS	---	---	---	271,950	282,778	---	---	72,984	71,494
ANIMALS, LIVE	---	---	---	14,924	15,506	---	---	3,541	3,698
CATTLE	NO	8	10	3,936	4,965	2	3	892	1,618
POULTRY, LIVE:									
BABY CHICKS, EX BREEDING CHICKS	NO	4,704	5,192	974	1,186	1,237	1,144	276	306
BREEDING CHICKS	NO	4,439	5,471	4,632	5,288	964	1,241	1,135	1,210
OTHER	---	---	---	853	495	---	---	178	94
OTHER	---	---	---	4,528	3,571	---	---	1,061	469
DAIRY PRODUCTS	---	---	---	46,636	52,521	---	---	8,957	13,403
ANHYDROUS MILK FAT	LB	25	1,166	21	595	1	1,095	1	549
BUTTER	LB	194	23,183	83	11,810	4	10,673	3	5,167
CHEESE AND CURD	LB	2,304	1,868	1,723	1,478	707	496	548	396
MILK AND CREAM:									
CONDENSED OR EVAPORATED	LB	16,406	9,098	3,393	1,888	8,968	3,192	2,056	694
DRY, WHOLE MILK AND CREAM	LB	2,571	10,658	899	2,331	738	1,474	275	391
FRESH	GAL	498	442	686	666	162	79	213	117
NONFAT DRY	LB	149,715	116,549	38,917	33,054	21,057	24,430	5,577	6,012
OTHER	---	---	---	915	700	---	---	284	77
FATS, OILS, AND GREASES	LB	858,362	899,630	82,315	81,661	268,353	224,207	25,380	19,920
LARD AND OTHER RENDERED PIG FAT	LB	140,333	58,067	16,920	7,029	37,255	12,154	4,434	1,492
TALLOW:									
EDIBLE	LB	6,181	1,786	610	222	183	539	27	65
INEDIBLE	LB	640,777	786,638	57,121	68,285	202,454	197,598	17,945	16,932
OTHER	LB	71,071	53,140	7,664	6,125	28,460	13,916	2,974	1,432
MEAT AND MEAT PREPARATIONS	LB	121,246	127,127	45,412	47,942	33,252	31,988	12,732	12,244
BEEF AND VEAL, EXCEPT OFFALS	LB	8,826	11,064	7,458	10,073	2,315	2,584	1,937	2,266
PORK, EXCEPT OFFALS	LB	26,964	22,485	11,475	9,119	8,360	6,174	3,821	2,833
OFFALS, EDIBLE, VARIETY MEATS	LB	75,897	84,803	21,760	24,019	19,634	21,317	5,401	6,203
OTHER	LB	9,560	8,775	4,719	4,731	2,943	1,912	1,573	942
POULTRY PRODUCTS	---	---	---	21,643	19,695	---	---	6,178	3,389
EGGS, DRIED AND OTHERWISE PRESERVED	LB	248	435	294	470	62	11	91	12
EGGS IN THE SHELL, FOR HATCHING	DOZ	3,921	3,523	3,664	3,699	1,065	982	911	988
EGGS IN THE SHELL, OTHER	DOZ	369	290	157	105	79	84	35	28
POULTRY MEAT, FRESH, FROZEN:									
CHICKENS	LB	35,587	36,514	9,238	9,594	8,126	3,630	2,107	1,047
TURKEYS	LB	16,457	9,772	6,012	4,271	6,368	2,357	2,421	972
OTHER	LB	3,425	2,507	1,264	846	1,037	529	408	186
POULTRY, CANNED AND SPECIALTIES	LB	2,680	1,981	1,012	711	538	440	204	156

CONTINUED--

TABLE 16.--U.S. AGRICULTURAL EXPORTS: QUANTITY AND VALUE BY COMMODITY--CONTINUED

COMMODITY	UNIT	JULY-OCTOBER				OCTOBER			
		QUANTITY		VALUE		QUANTITY		VALUE	
		1970 THOU.	1971 1/ THOU.	1970 1,000 DOL.	1971 1/ 1,000 DOL.	1970 THOU.	1971 1/ THOU.	1970 1,000 DOL.	1971 1/ 1,000 DOL.
OTHER ANIMAL PRODUCTS	---	---	---	61,021	65,453	---	---	16,196	18,842
HAIR, ANIMAL, EX WOOL OR FINE HAIR	LB	486	361	296	173	99	83	57	46
HIDES AND SKINS, INCL FURSKINS	---	---	---	49,761	51,704	---	---	13,283	16,547
SAUSAGE CASINGS	LB	3,810	3,637	3,934	3,500	968	829	983	649
WOOL, UNMANUFACTURED, INC FINE HAIR	CLB	2,405	7,046	1,761	3,644	731	566	492	330
OTHER	---	---	---	5,268	6,431	---	---	1,381	1,270
VEGETABLE PRODUCTS	---	---	---	2,131,513	2,058,306	---	---	656,882	394,754
COTTON, UNMANUFACTURED	RBA	578	911	70,325	134,069	191	207	23,144	30,064
COTTON, RAW	RBA	539	881	69,125	133,173	180	195	22,819	29,726
LINTERS	RBA	39	29	1,200	895	10	12	325	339
FRUITS AND PREPARATIONS	---	---	---	133,200	120,662	---	---	33,780	40,091
CANNED	LB	152,179	71,628	23,040	12,445	56,399	25,094	8,298	4,231
CHERRIES	LB	787	739	261	229	200	170	79	66
FRUIT COCKTAIL	LB	34,178	15,720	5,998	3,022	10,397	7,471	1,840	1,400
PEACHES	LB	69,096	25,366	8,811	3,714	30,983	10,907	3,935	1,590
PEARS	LB	5,518	1,481	778	286	2,140	647	315	102
PINEAPPLES	LB	34,413	19,787	5,393	3,287	10,033	4,763	1,566	818
OTHER	LB	8,187	8,535	1,799	1,907	2,646	1,136	563	255
DRIED	LB	114,932	69,153	24,214	14,655	30,926	32,878	6,642	7,124
PRUNES	LB	36,642	19,319	8,282	4,240	11,697	10,495	2,458	2,422
GRAPES (RAISINS)	LB	64,454	40,316	11,862	7,323	15,274	17,861	2,982	3,298
OTHER	LB	13,836	9,517	4,071	3,091	3,954	4,522	1,203	1,403
FRESH	LB	686,135	735,966	67,498	75,133	152,875	235,045	14,845	24,783
APPLES	LB	22,378	26,116	2,400	2,961	9,108	6,569	899	670
BERRIES	LB	5,669	5,444	1,249	1,253	1,470	796	278	154
GRAPEFRUITS	LB	52,762	48,904	4,371	4,594	22,966	21,442	1,407	1,819
GRAPES	LB	157,995	208,130	18,366	24,608	66,507	137,234	7,012	15,185
LEMONS AND LIMES	LB	102,225	114,385	11,027	12,146	17,856	19,438	2,001	2,026
ORANGES, TANGERINES, AND CLEMENTINE	LB	162,816	142,385	16,220	14,132	21,421	26,960	2,148	2,762
PEARS	LB	20,376	25,749	2,157	2,701	5,069	13,212	439	1,370
OTHER	LB	161,913	164,853	11,707	12,738	8,478	9,394	661	797
FRUIT JUICES	GAL	11,500	8,934	17,236	17,155	2,282	1,724	3,688	3,581
GRAPEFRUIT	GAL	1,570	1,402	2,326	2,222	305	261	479	404
ORANGE	GAL	6,149	5,274	10,567	11,757	1,222	961	2,291	2,456
OTHER	GAL	3,781	2,258	4,343	3,176	755	502	918	721
FROZEN FRUITS	LB	1,770	2,007	377	433	410	439	93	98
OTHER	---	---	---	835	841	---	---	214	275
NUTS AND PREPARATIONS	LB	47,667	38,995	28,612	23,190	28,642	21,660	17,252	13,496
ALMONDS	LB	28,436	22,759	19,484	15,800	18,179	15,393	12,767	10,798
WALNUTS	LB	8,286	9,140	2,535	2,452	6,070	3,897	1,753	1,113
OTHER	LB	10,945	7,096	6,594	4,937	4,393	2,370	2,733	1,585

CONTINUED--



TABLE 161--U.S. AGRICULTURAL EXPORTS: QUANTITY AND VALUE BY COMMODITY--CONTINUED

COMMODITY	UNIT	JULY-OCTOBER				OCTOBER			
		QUANTITY		VALUE		QUANTITY		VALUE	
		1970 THOU.	1971 1/ THOU.	1970 1,000 DOL.	1971 1/ 1,000 DOL.	1970 THOU.	1971 1/ THOU.	1970 1,000 DOL.	1971 1/ 1,000 DOL.
GRAINS AND PREPARATIONS	---	---	---	937,107	772,137	---	---	289,875	137,851
FEED GRAINS AND PRODUCTS	MT	7,869	5,323	428,105	305,970	2,189	757	127,548	39,941
FEED GRAINS	MT	7,752	5,224	419,979	298,165	2,154	739	125,202	38,751
BARLEY	BU	26,485	6,503	17,578	9,047	4,240	2,361	4,151	2,586
CORN	BU	207,324	170,351	307,029	245,774	56,548	25,678	87,396	34,068
GRAIN SORGHUMS	BU	70,275	29,522	88,637	42,882	20,942	1,349	28,589	1,963
OATS	BU	8,547	408	6,735	463	6,427	93	5,066	133
MALT AND FLOUR, INC BARLEY MALT	LB	22,525	27,434	1,424	1,931	5,843	1,445	386	93
CORN GRITS AND HOMINY	LB	10,956	8,023	499	427	2,063	1,805	102	88
CORNMEAL	CWT	764	550	3,234	2,622	154	153	703	693
CORN STARCH	LB	15,922	18,246	1,870	1,984	4,989	1,724	454	207
OATMEAL AND GROATS	CWT	33	5	186	27	32	0	177	0
OATMEAL & OATS, ROLLED, ETC	LB	15,270	14,173	912	814	9,137	1,965	524	109
RICE, MILLED BASIS	LB	1,333,226	1,169,539	103,586	93,266	438,588	394,728	34,133	29,685
MILLED	LB	843,739	848,653	70,165	71,383	396,360	249,611	30,951	19,971
HUSKED, BROWN	LB	489,004	320,717	33,359	21,860	42,120	145,056	3,169	9,705
PADDY OR ROUGH	LB	483	169	61	22	109	61	14	8
RYE	BU	14	1,604	23	1,946	3	1	3	1
WHEAT AND PRODUCTS	BU	243,494	200,759	386,656	342,366	76,520	36,924	123,120	63,450
WHEAT	BU	223,370	182,470	353,133	307,848	69,143	32,921	110,841	55,750
WHEAT FLOUR	CWT	6,922	6,532	25,514	26,815	2,694	1,413	9,956	5,813
OTHER WHEAT PRODUCTS	BU	4,341	3,395	8,009	7,703	1,236	782	2,324	1,886
BAKERY PRODUCTS	LB	5,765	6,185	2,189	2,312	1,769	1,474	672	518
INFANTS AND DIETETIC FOODS	LB	27,008	73,949	5,963	11,689	3,840	2,904	1,298	944
BLENDED FOOD PRODUCTS	LB	89,307	123,808	7,040	10,734	26,579	29,135	2,155	2,491
OTHER	---	---	---	3,543	3,854	---	---	945	822
FEEDS AND FODDERS, EX OIL CAKE & MEAL	---	---	---	53,864	39,942	---	---	15,171	9,865
CORN BYPRODUCTS, FEED	STN	263	262	14,314	14,766	68	76	3,730	4,513
ALFALFA MEAL, DEHYDRATED	STN	147	46	7,839	2,530	36	24	1,925	1,292
ALFALFA MEAL, SUN-CURED	STN	96	29	4,802	1,356	28	18	1,389	834
POULTRY FEEDS, PREPARED	STN	49	42	6,386	6,302	14	6	1,690	781
OTHER	---	---	---	20,523	14,987	---	---	6,435	2,445
OILSEEDS AND PRODUCTS	---	---	---	601,949	664,718	---	---	181,217	133,228
OIL CAKE AND MEAL	STN	1,342	1,477	115,506	131,993	307	177	25,993	15,642
SOYBEAN OIL CAKE AND MEAL	STN	1,260	1,401	108,690	124,954	281	157	23,976	13,889
OTHER	STN	82	76	6,816	7,039	26	20	2,017	1,753
FLAXSEED	BU	2,647	4	390,306	408,335	---	---	134,921	94,896
SOYBEANS	BU	130,814	124,480	6,918	20	1,391	0	3,676	0
SAFFLOWER SEED	LB	87,539	41,207	371,861	396,544	43,990	29,446	128,341	90,923
OTHER	---	---	---	3,887	2,113	24,833	41,207	1,165	2,113
VEG OILS AND WAXES	LB	700,352	811,638	7,640	9,658	---	---	1,740	1,860
COTTONSEED OIL	LB	56,303	115,491	96,137	124,390	141,241	176,751	20,302	22,690
SOYBEAN OIL	LB	573,257	574,508	8,280	18,628	12,185	3,132	1,740	536
OTHER	LB	70,793	123,639	74,923	85,398	111,574	142,972	15,424	18,674
				12,935	20,365	17,482	30,646	3,139	3,480

CONTINUED--

TABLE 16.--U.S. AGRICULTURAL EXPORTS: QUANTITY AND VALUE BY COMMODITY--CONTINUED

COMMODITY	UNIT	JULY-OCTOBER				OCTOBER			
		QUANTITY		VALUE		QUANTITY		VALUE	
		1970 THOU.	1971 1/ THOU.	1970 1,000 DOL.	1971 1/ 1,000 DOL.	1970 THOU.	1971 1/ THOU.	1970 1,000 DOL.	1971 1/ 1,000 DOL.
TOBACCO, UNMANUFACTURED	LB	174,135	172,922	172,842	176,367	56,677	4,034	57,940	4,432
BURLEY	LB	11,203	12,755	11,914	14,164	2,087	7	2,320	11
CIGAR WRAPPER	LB	379	1,287	1,503	8,019	119	47	746	241
DARK-FIRED KENTUCKY AND TENNESSEE	LB	6,588	9,988	4,221	6,871	2,290	1	1,469	1
FLUE-CURED	LB	123,847	107,180	135,464	118,818	40,757	2,265	46,804	3,290
MARYLAND	LB	4,571	5,356	4,124	5,461	1,478	3	1,356	3
OTHER	LB	27,547	36,437	15,617	23,034	9,946	1,712	5,244	887
VEGETABLE AND PREPARATIONS	---	---	---	59,020	47,508	---	---	17,101	13,198
CANNED	LB	38,949	25,966	7,628	5,131	9,454	7,018	1,931	1,315
ASPARAGUS	LB	2,678	947	944	374	389	353	122	108
CORN	LB	4,372	4,102	790	790	1,357	616	253	118
SOUPS	LB	5,963	4,836	1,359	1,157	1,992	1,160	446	254
TOMATOES, TOMATO SAUCE AND PUREE	LB	11,497	7,854	1,949	1,228	1,846	2,704	352	420
OTHER	LB	14,439	8,227	2,586	1,581	3,870	2,185	758	415
PULSES	LB	236,114	140,606	18,208	12,630	71,462	60,236	5,823	4,854
DRIED BEANS	LB	117,073	91,904	10,695	9,362	35,427	30,205	3,355	3,056
DRIED PEAS, INC CORN AND CHICK	LB	94,251	36,357	5,125	2,097	28,509	21,450	1,704	1,017
DRIED LENTILS	LB	24,791	12,346	2,388	1,170	7,526	8,582	764	781
FRESH	LB	264,870	274,839	14,774	15,263	52,493	56,210	3,476	4,179
LETTUCE	LB	34,678	42,177	2,046	2,505	20,157	23,810	1,108	1,456
ONIONS	LB	25,219	32,471	1,299	1,464	5,010	5,844	253	306
POTATOES, EXCEPT SWEET POTATOES	LB	121,147	113,729	4,003	3,026	7,449	3,235	310	93
TOMATOES	LB	44,444	44,128	3,925	4,720	11,771	13,866	914	1,317
OTHER	LB	39,381	42,333	3,501	3,548	8,106	9,455	891	1,007
FROZEN VEGETABLES	LB	6,496	5,981	1,178	1,084	1,766	1,237	256	193
HOPS	LB	1,645	1,257	1,463	1,172	1,036	290	865	223
SOUPS AND VEGETABLES, DEHYDRATED	LB	12,370	7,992	5,224	3,294	3,368	1,843	1,292	707
TOMATO JUICE, CANNED	GAL	581	228	634	243	145	56	159	58
VEGETABLE SEASONINGS	LB	17,661	14,313	4,441	4,094	5,638	2,630	1,449	666
OTHER	---	---	---	5,470	4,597	---	---	1,848	1,003
OTHER VEGETABLE PRODUCTS	---	---	---	74,594	79,715	---	---	21,403	12,528
COFFEE	LB	5,793	6,871	6,180	7,190	2,189	1,357	2,062	1,582
DRUGS, HERBS, ROOTS, ETC	LB	3,974	3,491	3,113	3,191	935	450	1,233	863
ESSENTIAL OILS AND RESINOIDS	LB	3,935	4,300	10,014	11,744	915	473	2,859	1,373
FLAVORING SIRUPS, SUGARS, EXTRACTS	---	---	---	16,878	18,341	---	---	3,913	793
HONEY	LB	2,609	2,124	596	545	502	239	144	72
NURSERY STOCK	---	---	---	2,498	2,512	---	---	588	694
SEEDS, EXCEPT OILSEEDS	LB	37,089	26,001	11,455	9,628	13,092	8,649	4,195	2,886
SPICES	LB	3,091	2,387	1,722	1,613	709	325	497	195
OTHER	---	---	---	22,138	24,950	---	---	5,912	4,071

1/ PRELIMINARY

Table 17.--U.S. agricultural exports and imports: Value by country  
July-October 1970 and 1971

Country	Exports		Imports		Country	Exports		Imports	
	1970	1971	1970	1971		1970	1971	1970	1971
					-- 1,000 dollars --				
World	2,372,009	2,341,083	1,844,758	1,998,438					
Major Trade Blocs:					Europe--Continued				
CACM	17,975	16,186	116,986	122,889	Sweden	21,913	21,604	1,900	3,240
LAFTA	145,186	175,333	477,782	515,325	Norway	14,191	15,792	1,136	2,733
EC	543,051	567,069	140,565	157,663	Finland	5,665	4,323	1,616	3,558
EFTA	244,871	222,875	88,264	104,625	Denmark	25,639	28,024	50,860	48,838
Greenland	1	0	0	0	United Kingdom	135,225	107,310	13,798	19,821
Canada	295,826	277,095	99,249	95,739	Ireland	9,190	2,177	20,162	14,432
Miquelon and St. Pierre Islands	395	15	0	0	Netherlands	199,720	205,272	50,882	50,992
Mexico	44,762	38,485	92,397	87,374	Belgium-Luxembourg	57,210	52,588	5,383	4,303
Central America	25,624	25,205	131,625	134,509	France	56,730	60,620	36,781	45,546
Guatemala	4,526	5,351	29,493	31,111	West Germany	182,152	184,065	21,340	26,406
British Honduras	797	1,358	898	1,129	East Germany	3,292	1,372	0	27
El Salvador	3,860	2,311	11,307	12,711	Austria	4,344	3,959	2,583	2,604
Honduras	2,885	3,731	26,394	30,459	Czechoslovakia	3,544	5,172	693	373
Nicaragua	2,286	2,069	14,775	12,748	Switzerland	7,302	6,269	1,999	1,273
Costa Rica	4,417	2,743	34,997	29,860	Estonia	26,955	25,484	9,190	9,964
Panama	6,853	8,662	13,761	10,376	Latvia	0	0	0	0
Canal Zone	0	0	0	115	Lithuania	0	0	0	0
Caribbean	49,995	60,249	52,695	50,693	Poland	0	0	0	0
Bermude	3,088	3,393	2	5	U.S.S.R.	10,392	16,056	15,592	13,452
Bahamas	8,782	9,184	275	167	Azores	374	5,419	104	1,231
Cuba	0	0	13	44	Spain	3	196	45	39
Jamaica	11,990	13,167	3,248	4,658	Portugal	29,729	44,037	24,987	38,777
Haiti	2,533	3,087	3,441	4,756	Gibraltar	10,939	15,667	7,114	13,837
Dominican Republic	9,797	15,315	37,018	34,781	Malta-Gozo	7	20	6	3
Leeward-Windward Islands	2,015	1,792	726	123	Italy	453	836	0	0
Barbados	1,271	1,252	1,275	645	Yugoslavia	47,239	64,524	26,180	30,417
Trinidad-Tobago	5,713	6,475	3,305	4,756	Albania	13,571	10,044	8,672	11,168
Netherlands Antilles	4,291	5,456	3	2,034	Greece	0	0	44	98
French West Indies	515	1,128	3,389	3,472	Romania	10,345	7,552	12,094	11,710
South America	103,439	140,792	391,696	436,173	Bulgaria	10,885	5,291	332	619
Colombia	13,090	20,925	54,778	66,384	Turkey	1,540	0	431	403
Venezuela	33,452	34,558	7,625	8,124	Cyprus	9,198	16,357	24,073	30,053
Guyana	1,308	1,739	6,155	97	Asia	2,354	1,377	114	182
Surinam	1,657	2,171	156	0	Syrian Arab Republic	854,113	776,105	316,877	345,103
French Guiana	51	34	0	27,068	Lebanon	148	6,487	471	848
Ecuador	4,456	8,084	39,564	33,289	Iraq	7,531	5,660	1,963	3,142
Peru	9,023	20,457	35,172	4,494	Iran	390	4,856	529	498
Bolivia	1,806	4,336	1,400	97	Israel	12,827	22,378	6,634	9,829
Chile	13,681	6,874	1,020	0	Jordan	31,769	32,584	1,526	1,976
Brazil	21,337	35,524	195,280	241,953	Geza Strip	2,324	1,472	0	0
Paraguay	888	2,187	4,812	1,432	Kuwait	20	2	1	0
Uruguay	860	652	2,391	477	Saudi Arabia	817	1,896	0	0
Argentina	1,830	3,251	43,343	46,112	Arabia Peninsula States, n.e.c.	10,041	8,648	0	0
Falkland Islands	0	0	0	0	Southern Yemen	1,682	630	46	250
Europe	900,761	912,119	336,977	386,129	Bahrain	319	52	36	84
Iceland	660	712	66	30	Afghanistan	571	366	0	0
					India	521	4,663	89	738
					Pakistan	72,769	102,949	31,112	37,578
					Nepal	21,555	48,499	1,659	1,361
					Ceylon	37	11	466	195
					Burma	800	5,695	7,420	11,546
						217	320	30	0

Continued--

Table 17.--U.S. agricultural exports and imports: Value by country  
July-October 1970 and 1971--Continued

Country	Exports		Imports		Country	Exports		Imports	
	1970	1971	1970	1971		1970	1971	1970	1971
	-- 1,000 dollars --					-- 1,000 dollars --			
Asia--Continued:					Africa--Continued:				
Thailand	10,954	19,768	8,703	9,415	Guinea	1,805	3,790	3,138	1,229
North Vietnam	0	0	0	0	Sierra Leone	1,138	1,796	1,364	1,069
South Vietnam	44,719	23,493	38	38	Ivory Coast	315	621	22,620	18,753
Laos	675	297	0	97	Ghana	2,664	2,735	26,892	16,112
Cambodia	18	1,827	37	0	The Gambia	55	404	19	0
Malaysia	4,784	4,871	35,869	43,755	Togo	338	486	34	172
Singapore	5,686	3,641	4,842	8,314	Nigeria	10,687	11,566	5,481	9,900
Indonesia	37,162	32,613	36,211	46,323	Central African Republic	16	9	0	0
Philippines	21,493	19,789	148,177	137,880	Cabon	51	66	0	0
Macao	36	37	0	63	Western Africa, n.e.c.	920	---	952	---
Southern-Southeastern Asia, n.e.c.	21	5	49	87	Mali 1/2	---	622	---	39
China (Mainland)	0	0	0	2,148	Niger 1/2	---	44	---	2/
Outer Mongolia	0	0	99	410	Chad 1/2	---	32	---	6
North Korea	1	0	0	0	Upper Volta 1/2	---	611	---	0
Korea, Republic of	78,329	66,291	935	2,207	Dahomey 1/2	---	519	---	164
Hong Kong	19,250	16,147	1,094	1,130	Congo (Brazzaville) 1/2	---	168	---	98
Republic of China	44,329	28,510	15,307	13,185	British West Africa	0	0	1	0
Japan	416,365	309,410	13,529	11,893	Madeira Islands	5	419	75	239
Nansei Islands, n.e.c.	5,953	2,238	5	12	Angola	2,780	2,219	20,796	31,735
					Western Portuguese Africa, n.e.c.	123	118	200	92
Australia and Oceania	18,931	12,727	235,745	265,805	Liberia	3,087	3,473	10,799	9,207
Australia	12,594	9,544	141,210	166,621	Congo (Kinshasa)	1,322	3,093	5,144	12,595
New Guinea	107	27	6,162	7,419	Burundi and Rwanda	190	---	15,033	---
New Zealand	3,682	2,393	82,028	86,982	Burundi 1/2	---	76	---	5,863
British Western Pacific Islands	325	---	6,336	---	Rwanda 1/2	---	306	---	2,682
British Pacific Islands 1/2	---	20	---	9	Somalia Republic	1,653	1	4	2
Pacific Islands, n.e.c. 1/2	---	13	---	4,756	Ethiopia	348	333	16,489	18,942
French Pacific Islands	1,120	362	18	15	Afers-Isas	102	157	0	0
Trust Territory of Pacific Islands	1,103	368	1	3	Uganda	110	159	16,732	17,122
					Kenya	609	1,375	7,658	7,459
Africa	78,162	97,291	187,497	196,911	Seychelles-Dependencies	11	37	120	291
Morocco	13,138	17,497	1,008	503	Tanzania	1,019	2,700	6,948	5,148
Algeria	6,064	4,304	85	6	Mauritius-Dependencies	750	783	80	2,931
Tunisia	6,531	4,911	141	502	Mozambique	125	98	4,936	5,737
Libya	1,479	1,324	0	0	Malagasy Republic	398	---	6,341	---
UAR	7,960	13,726	242	756	Malagasy Republic 1/2	---	491	---	8,109
Sudan	126	314	1,765	1,629	French Indian Ocean Areas 1/2	---	7	---	494
Canary Islands	1,266	1,196	0	1	Republic of South Africa	8,500	10,465	4,116	7,834
Spanish Africa, n.e.c., Equatorial	---	---	0	---	Zambia	135	134	103	5
Guinea	8	---	0	---	Rhodesia	45	13	1	2/
Spanish Africa, n.e.c. 1/2	---	0	---	0	Malawi	64	56	522	1,128
Equatorial Guinea 1/2	---	0	---	345	Southern Africa, n.e.c.	1,207	---	3	---
Mauritania	1	384	1	164	Botswana 1/2	---	81	---	3
Federal Republic of Cameroon	400	1,051	7,665	6,835	Swaziland 1/2	---	32	---	1,112
Senegal	617	1,496	7	0	Lesotho 1/2	---	1,013	---	0

Table 18.--Quantity indexes: U.S. agricultural exports, fiscal years 1968-71, monthly and accumulated, July 1970 to date

Year and month	Animals and animal products	Cotton and lintens	Tobacco, and unmanu- factured	Grains and feeds	Vegetable oils and oilseeds	Fruits and vegetables	All agricultural commodities <sup>1/</sup>
Calendar year 1967 = 100							
1967/68	96	101	100	104	99	91	101
1968/69	110	69	100	85	106	93	92
1969/70	101	75	101	97	148	109	106
1970/71	117	98	98	106	157	103	115
July-October 1970/71	105	44	89	113	144	113	110
July-October 1971/72	117	71	84	91	142	95	101
Adjusted for seasonal variation <sup>2/</sup>							
<u>Monthly</u>							
1970/71	105	74	86	119	149	122	114
July	99	36	56	104	167	112	109
August	109	30	69	108	190	89	110
September	109	66	107	136	143	81	128
October	106	71	84	103	57	96	102
November	144	59	79	111	154	100	112
December	132	116	102	112	175	104	123
January	122	118	84	104	168	95	115
February	128	149	133	92	163	111	117
March	118	157	108	90	165	113	110
April	103	104	122	104	147	96	112
May	125	121	97	88	159	114	111
June							
1971/72	103	79	86	90	204	90	106
July	111	69	78	83	169	79	102
August	145	108	112	135	186	75	138
September	115	77	6	68	101	86	80
October							
November							
December							
January							
February							
March							
April							
May							
June							
Not adjusted for seasonal variation							
1970/71	98	63	74	114	123	116	106
July	103	27	62	103	131	107	98
August	104	28	102	103	138	110	103
September	113	56	119	131	185	118	132
October	125	79	160	120	180	96	129
November	237	113	137	114	207	96	133
December	116	138	84	108	157	91	117
January	116	144	67	100	147	85	110
February	134	176	110	104	162	104	123
March	118	145	90	92	153	101	109
April	112	102	95	100	148	100	109
May	127	100	80	84	159	118	105
June							
1971/72	96	67	74	87	168	85	98
July	115	52	87	82	133	75	92
August	139	100	166	128	135	93	129
September	119	65	7	65	131	125	83
October							
November							
December							
January							
February							
March							
April							
May							
June							

<sup>1/</sup> Based on 359 classifications in 1971. <sup>2/</sup> The seasonal adjustment series has been revised to incorporate the Bureau of the Census Method X-11. This new method of adjusting for seasonal variations is a continuing system which takes into account changing seasonal patterns. For detailed explanation of the new adjustment procedures, see U.S. Department of Commerce, Bureau of the Census, The X-11 variant of the seasonal Method II seasonal adjustment program, Technical Paper No. 15. U.S. Government Printing Office, Washington, D.C., 1965.

## Explanatory Note

U.S. foreign agricultural trade statistics in this report include official U.S. data based on compilations of the Bureau of the Census. Agricultural commodities consist of (1) nonmarine food products and (2) other products of agriculture which have not passed through complex processes of manufacture such as raw hides and skins, fats and oils, and wine. Such manufactured products as textiles, leather, boots and shoes, cigarettes, naval stores, forestry products, and distilled alcoholic beverages are not considered agricultural.

The trade statistics exclude shipments between the 50 States and Puerto Rico, between the 50 States and the island possessions, between Puerto Rico and the island possessions, among the island possessions, and intransit through the United States from one foreign country to another when documented as such through U.S. Customs.

**EXPORTS** The export statistics also exclude shipments to the U.S. armed forces and diplomatic missions abroad for their own use and supplies for vessels and planes engaged in foreign trade. Data on shipments valued at less than \$251 are not compiled by commodity and are excluded from agricultural statistics but are reflected in nonagricultural and overall export totals in this report. The agricultural export statistics include shipments under P.L. 83-480 (Agricultural Trade Development and Assistance Act), and related laws; under P.L. 87-195 (Act for International Development); and involving Government payments to exporters. (USDA payments are excluded from the export value.) Separate statistics on Government program exports are compiled by USDA from data obtained from operating agencies.

The export value, the value at the port of exportation, is based on the selling price (or cost if not sold) and includes inland freight, insurance, and other charges to the port. The country of destination is the country of ultimate destination or where the commodities are to be consumed, further processed, or manufactured. When the shipper does not know the ultimate destination, the shipments are credited to the last country, as known to him at the time of shipment from the United States, to which the commodities are to be shipped in their present form. Except for Canada, export shipments valued at \$251-\$499 are included on the basis of sampling estimates; shipments to Canada valued at \$251-\$1,999 are sampled.

**IMPORTS** Imports for consumption are a combination of entries for immediate consumption and withdrawals from warehouses for consumption. Data on shipments valued at less than \$251 are estimated on the basis of a 1-percent sample and are not compiled by commodity. They are excluded from agricultural statistics but are reflected in nonagricultural and overall import totals in this report.

The import value, defined generally as the market value in the foreign country, excludes import duties, ocean freight, and marine insurance. The country of origin is defined as the country where the commodities were grown or processed. When the country of origin is not known, the imports are credited to the country of shipment.

Imports similar to agricultural commodities produced commercially in the United States and others that are interchangeable in use to any significant extent with such U.S. commodities are supplementary or partly competitive. All other commodities are complementary or noncompetitive.

Further explanatory material on foreign trade statistics and compilation procedures of the Bureau of the Census is contained in the publications of that agency.

END

DATE

FILMED

9-10-79

NTIS