



AgEcon SEARCH
RESEARCH IN AGRICULTURAL & APPLIED ECONOMICS

The World's Largest Open Access Agricultural & Applied Economics Digital Library

This document is discoverable and free to researchers across the globe due to the work of AgEcon Search.

Help ensure our sustainability.

Give to AgEcon Search

AgEcon Search
<http://ageconsearch.umn.edu>
aesearch@umn.edu

*Papers downloaded from **AgEcon Search** may be used for non-commercial purposes and personal study only. No other use, including posting to another Internet site, is permitted without permission from the copyright owner (not AgEcon Search), or as allowed under the provisions of Fair Use, U.S. Copyright Act, Title 17 U.S.C.*

58-684 (1982)

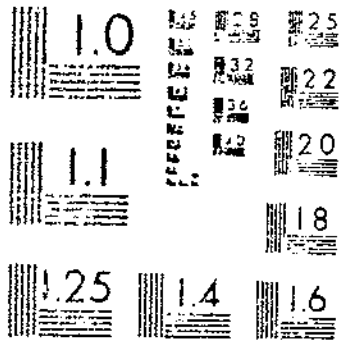
USDA STATISTICAL BULLETINS

VEDENTR

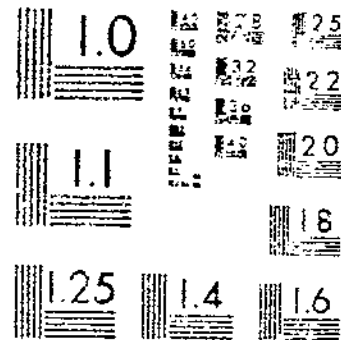
FRESH FRUIT AND VEGETABLE PRICES 1981

1 OF 1

START



MICROCOPY RESOLUTION TEST CHART
NATIONAL BUREAU OF STANDARDS 1963-A



MICROCOPY RESOLUTION TEST CHART
NATIONAL BUREAU OF STANDARDS 1963-A



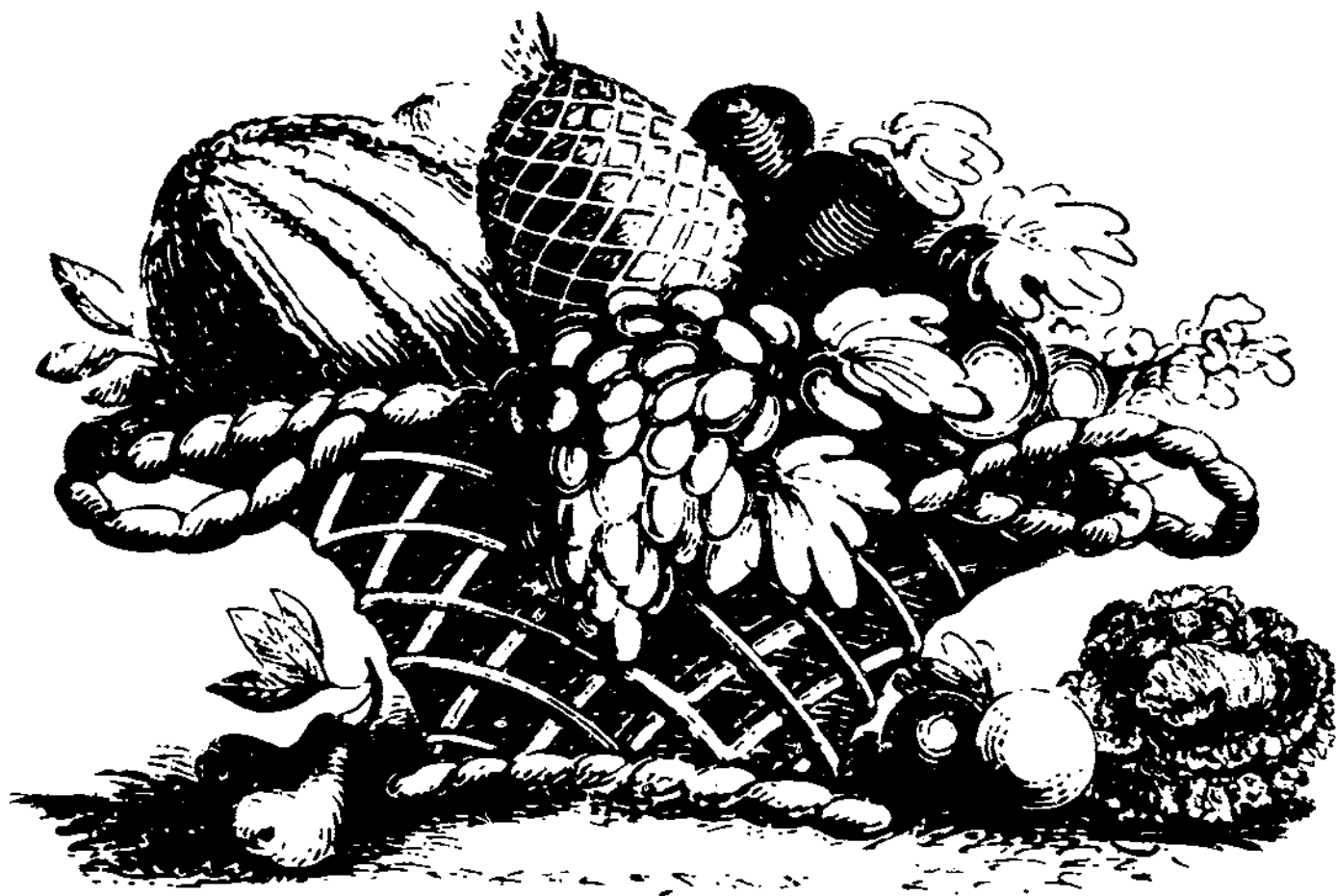
United States
Department of
Agriculture

Agricultural
Marketing
Service

Statistical
Bulletin
Number 684

Fresh Fruit and Vegetable Prices, 1981

Wholesale Chicago and New York
City, F.o.b. Leading Shipping Points



PREFACE

Prices listed in this report represent sales of certain fresh fruits and vegetables at important shipping points and at New York City and Chicago wholesale terminal markets during 1981.

Prices reported for important shipping points are simple averages of the midpoints of the daily range throughout the year as reported by local market news offices. They refer to sales in straight or mixed carloads or truckloads, unless otherwise noted. An average shipping point price for a month generally is shown only when there were quotations for 6 or more days for daily, 4 or more for semiweekly, and 2 or more for weekly reports during the month.

FOB shipping point prices represent sales for the commodity loaded on a railcar or truck at shipping point or port of entry. Transportation and protective service charges are not included in prices shown.

Wholesale prices for private sales at New York City and Chicago are simple average of representative prices for each Tuesday. In arriving at the Tuesday prices, local market reporters consider estimated volume of sales at different price levels, quality, condition, and other factors. These prices represent private sales in wholesale lots made by the first seller on the wholesale market. In a few instances, prices representing sales at auction are reported, but these are indicated in the tables. Prices are for stock of generally good merchantable quality and condition; protective services are extra unless otherwise stated. Grades are shown where quoted by grade.

Prepared by
U.S. Department of Agriculture
Agricultural Marketing Service
Fruit and Vegetable Division
Market News Branch
Washington, D.C. 20250

June 1982

CONTENTS

Page

Table 1. -Average prices of specified fruits and vegetables at leading shipping points, each month, by description of sale, 1981

Berries

Blueberries 5

Strawberries 5

Citrus Fruits

Grapefruit 5

Lemons 5

Limes 5

Oranges 6

Tangelos 6

Tangerines 6

Other Fruit

Apples 7-9

Apricots 9

Avocados 9

Cherries 9

Grapes 10

Mangoes 10

Nectarines 10

Peaches 11

Pears 11-12

Pineapples 12

Plums 12

Prunes, Fresh 12

Melons

Cantaloups 13

Honeydews 13

Watermelons 13-14

Nuts

Pecans 14

Vegetables

Artichokes 14

Asparagus 14-15

Beans, Green 15

Broccoli 15

Cabbage 15

Carrots 16

Cauliflower 16

Celery 16

Corn, Sweet 16

Cucumbers 16-17

Eggplant 17

Endive & Escarole 17

Onions, Dry 18-19

Onions, Green 19

Peppers, Green 19-20

Potatoes 20-21

Radishes 21

Spinach 22

Squash 22

Sweet Potatoes 22

Tomatoes 23-24

Page

Table 2. -Wholesale prices of specified fruits and vegetables at New York City and Chicago, each month by market, origin and description, 1981

Berries

Blueberries 25

Cranberries 25

Raspberries 25

Strawberries 25

Citrus Fruits

Grapefruit 25-26

Lemons 26

Limes 26

Oranges 26

Tangelos 26

Tangerines 26

Other Fruit

Apples 27

Avocados 27

Bananas 27

Cherries 28

Grapes 28

Nectarines 28

Peaches 28-29

Pears 29

Plums 29

Prunes, Fresh 29

Melons

Cantaloups 29

Honeydews 30

Watermelons 30

Vegetables

Artichokes 30

Asparagus 30

Beans, Green 30-31

Beets 31

Broccoli 31

Brussel Sprouts 31

Cabbage 31

Carrots 32

Cauliflower 32

Celery 32

Corn, Sweet 32

Cucumbers 33

Eggplant 33

Endive 33

Escarole 33

Kale 33

Lettuce 34

Mushrooms 34

Onions, Dry 35

Onions, Green 35

Peas, Green 35

Peppers 35

Potatoes 35-36

Radishes 36

Rhubarb 36

Spinach 36

Squash 36-37

Sweet Potatoes 37

Tomatoes 37-38

Table 1. —Average prices of specified fruits and vegetable at a leading shipping points, each month 1901.

(Prices in this table are simple averages of the midpoints of the daily range and are only for months during which market news offices were in operation in the specified districts. All sales free on board at shipping point. Unless otherwise stated, protective services are extra.)

BERRIES

Shipping point and Description of sale	Jan.	Feb.	Mar.	Apr.	May	June	July	Aug.	Sept.	Oct.	Nov.	Dec.
--	------	------	------	------	-----	------	------	------	-------	------	------	------

Dollars per unit

Blueberries

Cultivated, film wrpd., 12-pint flat
 West and Central Michigan - - - - - 8.51 8.10 9.17 - - -
 South and Central New Jersey - - - - - 9.81 8.30 7.53 - - -

Strawberries

12-pint flat												
Central Coast, California	-	-	-	5.50	5.21	5.05	7.53	7.23	5.43	9.00	-	-
Southern California	-	7.00	7.32	5.70	4.41	4.81	-	-	-	-	-	-
Central Florida	10.70	8.10	6.16	4.74	-	-	-	-	-	-	-	-
Hawmond & Ponchatoula, LA	-	-	6.78	6.70	-	-	-	-	-	-	-	-
Mexico-FOB So. Tex. (Point of Entry)												
Duty & crossing charges paid	0.45	-	-	-	-	-	-	-	-	-	-	-
16-quart crate												
Vineland, N.J.—Auction sales	-	-	-	-	22.18	16.22	-	-	-	-	-	-

CITRUS FRUITS

Grapefruit

Carton, shippers first grade												
California												
Coachella Valley												
Red, 27s	4.77	5.00	4.86	5.44	5.75	6.72	-	-	-	8.13	5.86	5.50
36s	4.61	5.00	4.92	6.03	6.67	7.58	-	-	-	8.14	6.08	5.75
48s	4.09	4.50	4.57	5.32	6.30	7.58	-	-	-	5.88	4.62	4.37
White 27s	3.93	4.50	4.52	4.40	4.49	5.42	-	-	-	6.93	5.27	5.25
36s	3.93	4.50	4.51	4.81	5.19	5.92	-	-	-	6.60	5.31	5.25
48s	3.26	3.25	3.30	3.94	4.85	5.89	-	-	-	3.85	3.79	3.88
Southern & Central												
White 27s	-	-	-	-	-	7.07	8.13	7.76	8.75	8.75	-	-
36s	-	-	-	-	-	7.75	7.38	7.63	7.75	7.75	-	-
48s	-	-	-	-	-	7.71	6.68	3.75	5.08	5.25	-	-
Red, 27s	-	-	-	-	-	6.78	8.10	8.43	8.85	7.25	-	-
36s	-	-	-	-	-	6.78	4.63	5.25	4.95	3.75	-	-
Carton, U.S. No. 1												
Texas												
Lower Rio Grande Valley												
Ruby Red, 27s	6.18	6.27	5.87	6.00	-	-	-	-	-	8.01	6.98	6.62
36s	5.45	5.64	5.71	6.00	-	-	-	-	-	7.25	5.68	5.53
48s	4.77	5.32	5.70	6.00	-	-	-	-	-	7.00	6.68	6.64
8-5 lb. film bag	6.04	6.51	6.59	7.00	-	-	-	-	-	7.70	6.68	6.64

Lemons

Carton, 140-165s												
California												
South & Central												
Shippers first grade	6.76	5.92	6.55	7.18	8.15	8.87	12.86	13.76	14.22	8.92	7.20	8.23
Choice	4.94	4.85	5.66	6.13	6.43	6.78	10.77	11.25	12.08	7.70	5.72	6.00

Limes

Persian Seedless												
10-lb. carton, 42-63s												
South Florida	4.11	5.89	7.20	10.10	7.85	5.55	1.79	1.63	2.88	3.69	2.70	4.53
Mexico Imports-FOB So. Tex (Point of Entry) Duty and crossing charges paid	2.96	4.27	6.20	9.58	5.22	4.34	-	-	-	3.11	2.25	4.66

Table 1. --Continued

CITRUS FRUITS

Shipping point and Description of sale	Jan.	Feb.	Mar.	Apr.	May	June	July	Aug.	Sept.	Oct.	Nov.	Dec.
Dollars per unit												
Oranges												
Carton												
Navel												
Central District-California												
Shopper first grade												
88-113s	7.31	7.26	4.86	4.49	4.38	4.78	-	-	-	6.96	6.06	6.61
138s	4.00	4.11	3.75	3.57	3.49	3.50	-	-	-	5.37	4.42	5.71
Choice												
88-113s	5.57	5.63	3.25	3.40	3.38	3.63	-	-	-	6.23	4.62	5.06
138s	3.37	3.50	-	-	-	-	-	-	-	4.38	3.48	4.43
South District-California												
Shopper first grade												
88-113s	7.31	7.26	7.00	-	-	-	-	-	-	-	-	8.38
138s	4.00	4.11	4.00	-	-	-	-	-	-	-	-	6.75
Choice												
88-113s	5.57	5.63	5.38	-	-	-	-	-	-	-	-	7.33
138s	3.37	3.50	3.50	-	-	-	-	-	-	-	-	5.25
Valencia												
Central District-California												
Shopper first grade												
88-113s	-	-	-	-	-	8.50	8.49	7.38	6.93	6.21	-	-
138s	-	-	-	-	-	4.55	4.38	4.50	5.37	4.17	-	-
Choice												
88-113s	-	-	-	-	-	5.09	6.74	6.29	5.38	4.84	-	-
138s	-	-	-	-	-	3.89	3.88	4.00	4.55	4.27	-	-
South District-California												
Shoppers first grade												
88-113s	-	-	-	8.00	8.16	9.00	8.42	7.05	6.91	6.60	6.25	6.25
138s	-	-	-	5.75	5.75	5.78	5.69	5.75	5.84	5.13	4.34	4.40
Choice												
88-113s	-	-	-	4.17	4.63	5.08	6.00	6.28	5.58	5.20	4.46	4.75
138s	-	-	-	3.75	4.10	4.05	4.71	4.25	4.79	4.69	4.29	4.62
Texas												
Lower Rio Grande Valley												
U.S. Combination-U.S. No. 1 and No. 2, 80-125s												
Early & Midseason	4.49	5.56	-	-	-	-	-	-	-	6.44	5.34	5.04
Valencias	5.50	5.85	5.26	5.30	-	-	-	-	-	-	-	-
Tangelos												
California												
South & Central California												
Carton												
Various Varieties-Mammoth	7.43	7.71	4.91	5.85	6.00	-	-	-	-	-	-	7.00
Jumbo	6.25	6.31	4.34	5.45	5.75	-	-	-	-	-	-	6.50
Large	4.75	4.50	3.86	4.35	4.75	-	-	-	-	-	-	6.60
Medium	3.75	3.46	3.31	3.43	3.50	-	-	-	-	-	-	4.25
Tangerines												
California												
Coachella Valley												
Carton												
Various Varieties Mammoth	-	-	-	-	-	-	-	-	-	-	-	7.88
Jumbo	-	-	-	-	-	-	-	-	-	-	-	7.00
Large	-	-	-	-	-	-	-	-	-	-	-	5.32
Medium	-	-	-	-	-	-	-	-	-	-	-	3.50
Mexico crate & carton												
FOB So. Tex. (Point of Entry)												
Duty and crossing charges paid												
Var. Varieties, 150-176s	5.50	-	-	-	-	-	-	-	-	8.25	6.73	6.42

Table 1. --Continued

OTHER FRUIT

Shipping point and Description of sale	Jan.	Feb.	Mar.	Apr.	May	June	July	Aug.	Sept.	Oct.	Nov.	Dec.
	Dollars per unit											
Apples												
Carton												
Idaho												
Idaho State Grade or U.S. Grade												
Tray Pack, Extra Fancy, 80-125s												
Red Delicious	8.00	-	-	-	-	-	-	-	-	11.78	12.38	13.75
Golden Delicious	6.75	-	-	-	-	-	-	-	-	8.04	8.00	-
Red Rome	7.72	7.50	-	-	-	-	-	-	-	11.83	12.68	13.00
C.A. Storage												
Red Delicious	-	9.08	9.48	-	-	-	-	-	-	-	-	-
Michigan												
Film bag, 12-3-lb.												
U.S. Fancy, 2-1/4" min.												
Jonathan	4.55	-	-	-	-	-	-	-	6.94	6.53	6.50	6.56
McIntosh	4.52	-	-	-	-	-	-	7.42	7.09	7.53	7.94	8.00
Red Delicious	5.37	-	-	-	-	-	-	-	7.25	7.31	7.29	7.06
Ida-Red & Winesap	5.38	-	-	-	-	-	-	-	-	7.25	7.25	7.27
Tray Pack Combination U.S.												
Extra Fancy & Fancy 88-113s												
Red Delicious	7.29	-	-	-	-	-	-	-	9.50	10.58	11.00	11.22
C.A. Storage												
Film bag, 12-3-lb.												
U.S. Fancy, 2-1/4" min.												
Jonathan	5.88	5.97	5.81	5.76	6.01	-	-	-	-	-	-	7.23
McIntosh	5.88	5.98	6.00	6.10	7.00	-	-	-	-	-	-	8.75
Red Delicious	6.50	6.62	6.74	6.70	6.81	-	-	-	-	-	-	7.38
Ida-Red & Winesap	6.25	6.38	6.33	6.32	6.45	-	-	-	-	-	-	7.25
Tray Pack Combination U.S.												
Extra Fancy & Fancy 88-113s												
Red Delicious	-	8.40	8.18	8.00	8.00	-	-	-	-	-	-	-
Red Rome	-	8.00	8.0	-	-	-	-	-	-	-	-	-
New York												
U.S. Fancy												
Hudson Valley												
Cell Pack, 100-120s												
McIntosh	8.26	-	-	-	-	-	-	-	10.05	10.90	12.00	13.47
Cortland	7.25	-	-	-	-	-	-	-	-	10.23	10.48	10.59
C.A. Storage												
McIntosh	9.35	9.35	8.88	8.73	8.63	-	-	-	-	-	-	-
Cortland	-	-	7.85	8.17	-	-	-	-	-	-	-	-
Tray Pack 88-113s												
Red Delicious	8.40	8.52	-	-	-	-	-	-	-	-	11.46	11.45
C.A. Storage												
Red Delicious	8.75	8.75	8.75	8.78	8.88	-	-	-	-	-	-	-
Film bags, 12-3-lb.												
2-1/4" min or up												
Cortland	8.75	-	-	-	-	-	-	-	-	7.76	7.70	7.87
McIntosh	9.88	5.25	-	-	-	-	-	-	7.25	7.87	8.44	8.76
Red Delicious	5.72	-	-	-	-	-	-	-	-	7.80	8.00	7.97
C.A. Storage												
Cortland	5.85	5.85	6.05	5.75	-	-	-	-	-	-	-	-
McIntosh	6.57	5.57	6.54	6.68	6.63	-	-	-	-	-	-	-
Red Delicious	6.80	6.80	6.74	6.73	6.75	-	-	-	-	-	-	-
Red Rome	6.25	6.25	6.27	6.00	6.25	-	-	-	-	-	-	-
Lake Champlain-Mohawk Valley												
Cell pack, 100-120s												
McIntosh	9.00	-	-	-	-	-	-	-	-	12.00	12.13	13.12
C.A. Storage												
McIntosh	9.50	9.79	9.48	9.41	9.38	-	-	-	-	-	-	-
Film bag, 12-3-lb.												
2-1/4" min. or up												
McIntosh	6.00	6.12	-	-	-	-	-	-	-	8.33	8.00	8.63
C.A. Storage												
McIntosh	-	6.62	6.62	6.74	6.75	-	-	-	-	-	-	-

Table 1. -Continued

OTHER FRUIT-CONTINUED

Shipping point and Description of sale	: Jan. :	Feb. :	Mar. :	Apr. :	May :	June :	July :	Aug. :	Sept. :	Oct. :	Nov. :	Dec.
	Dollars per unit											
Apples-Continued												
Carton												
New York Continued												
Western & Central New York												
Tray Pack, 88-113s U.S. Fancy												
Red Delicious	-	8.75	9.00	8.63	-	-	-	-	-	12.75	12.63	11.78
C.A. Storage												
Red Delicious	-	-	9.80	9.57	-	-	-	-	-	-	-	-
Film bags, 12-3-lb. 2-1/4" min. or up												
McIntosh	6.13	5.55	5.92	-	-	-	-	-	-	8.58	8.91	9.06
Red Delicious	6.13	6.13	6.28	6.16	-	-	-	-	-	8.49	8.50	8.38
C.A. Storage												
McIntosh	-	6.82	7.00	7.07	-	-	-	-	-	-	-	-
Red Delicious	-	8.00	7.40	7.25	-	-	-	-	-	-	-	-
North Carolina												
Western North Carolina												
U.S. Fancy												
Tray Pack, 88-113s												
Golden Delicious	-	-	-	-	-	-	-	8.45	7.50	7.57	8.46	-
Red Delicious	-	-	-	-	-	-	-	9.55	8.13	8.08	7.50	-
Film bags, 12-3-lb. 2-1/4" min. or up												
Golden Delicious	-	-	-	-	-	-	-	6.55	5.32	5.58	6.08	-
Red Delicious	-	-	-	-	-	-	-	7.23	5.50	5.58	5.75	-
Georgia & South Carolina												
U.S. Fancy												
Tray Pack, 88-113s												
Red Delicious	-	-	-	-	-	-	-	7.10	7.13	-	-	-
Film bag, 12-3-lb. 2-1/4" min. or up												
Red Delicious	-	-	-	-	-	-	-	6.92	5.06	-	-	-
Washington												
Yakima Valley-Wenatchee												
Wash. State or U.S. Grade												
Extra Fancy												
Tray Pack, 88-113s												
Golden Delicious	6.95	6.88	-	-	-	-	-	-	9.30	8.67	9.25	10.00
Red Delicious	8.50	8.70	-	-	-	-	-	-	16.03	13.15	14.28	13.76
C.A. Storage												
Golden Delicious	-	9.25	9.50	9.35	8.91	8.46	7.90	6.88	-	-	-	-
Red Delicious	-	9.70	9.74	9.13	9.54	10.23	12.49	16.03	-	-	-	-
Md.-Pa.-Va.-W.Va.												
Appalachian District												
Combination, U.S. Extra												
Fancy & Fancy												
Tray Pack, 88-113s												
Golden Delicious	7.73	-	-	-	-	-	-	-	8.69	9.06	9.16	9.00
Red Delicious	8.25	-	-	-	-	-	-	-	10.00	10.95	11.88	12.15
Red Rome	7.80	7.41	-	-	-	-	-	-	-	-	9.28	9.20
Red Stayman	9.00	-	-	-	-	-	-	-	-	-	11.23	11.08
Red York	7.38	-	-	-	-	-	-	-	-	-	9.00	9.00
C.A. Storage												
Golden Delicious	-	8.91	-	-	-	-	-	-	-	-	-	-
Red Delicious	9.50	9.20	8.60	8.03	8.50	-	-	-	-	-	-	-
Red Stayman	-	10.72	10.41	10.04	-	-	-	-	-	-	-	-
Red Rome	-	-	8.79	8.45	8.43	-	-	-	-	-	-	-

Table 1. -Continued

OTHER FRUIT-CONTINUED

Shipping point and Description of sale	: Jan.	: Feb.	: Mar.	: Apr.	: May	: June	: July	: Aug.	: Sept.	: Oct.	: Nov.	: Dec.
	Dollars per unit											
Apples-Continued												
Carton												
Md.-Pa.-Va.-W Va -Continued												
Appalachian District												
Film bags, 12-3-lb. U.S. Fancy												
2-1/4" min. or up												
Golden Delicious	5.10	5.50	-	-	-	-	-	-	6.44	6.50	6.50	6.50
Red Delicious	5.62	6.02	-	-	-	-	-	-	6.58	7.00	7.19	7.30
Red Stayman	5.35	-	-	-	-	-	-	-	-	7.21	7.00	6.62
Red Rome	5.35	5.09	-	-	-	-	-	-	-	7.00	7.00	7.00
Red York	5.18	5.06	-	-	-	-	-	-	-	-	6.89	6.88
Winesap	5.58	5.13	-	-	-	-	-	-	-	-	-	7.00
C.A. Storage												
Golden Delicious	-	7.00	6.83	6.75	6.98	-	-	-	-	-	-	-
Red Delicious	7.25	7.29	6.77	6.94	7.22	-	-	-	-	-	-	-
Red Stayman	-	7.50	7.08	6.69	6.50	-	-	-	-	-	-	-
Red Rome	-	-	6.37	6.34	6.38	-	-	-	-	-	-	-
Winesap	-	-	6.96	-	-	-	-	-	-	-	-	-
Chile Dock Prices NYC/Philadelphia												
Carton Tray Pack												
Granny Smith 80-125s	-	-	18.44	18.00	18.50	-	-	-	-	-	-	-
Apricots												
California												
Winter-Brentwood-N. San Joaquin Vly.												
Lug, 24-lb., tight/volume-fill pack												
Derby Royal & Royal												
Jumbo	-	-	-	-	17.25	15.05	-	-	-	-	-	-
Extra Large	-	-	-	-	15.25	13.70	-	-	-	-	-	-
Large	-	-	-	-	12.00	9.53	-	-	-	-	-	-
Avocados												
Florida												
South Florida												
Flats, 6-18s												
Various varieties	4.48	4.68	-	-	-	-	5.50	5.86	5.63	3.66	4.00	3.80
Cherries												
California												
Stockton-Linden-Lodi												
18-lb. lug and carton												
12 row size and larger												
Bing	-	-	-	-	15.87	12.00	-	-	-	-	-	-
Early Burlat	-	-	-	-	16.13	-	-	-	-	-	-	-
Larlans	-	-	-	-	17.50	-	-	-	-	-	-	-
Washington												
Yakima Valley-Wenatchee												
(Including Milton Freewater, Oreg.)												
20-lb. lug & Carton, U.S. No. 1												
12 row size & lgr.												
Bing	-	-	-	-	15.87	15.58	-	-	-	-	-	-
Lambert	-	-	-	-	14.33	14.60	-	-	-	-	-	-
Vans	-	-	-	-	12.00	12.00	-	-	-	-	-	-

Table 1. -Continued

OTHER FRUIT-CONTINUED

Shipping point and Description of sale	Jan.	Feb.	Mar.	Apr.	May	June	July	Aug.	Sept.	Oct.	Nov.	Dec.
	Dollars per unit											
Grapes												
California												
22-lb. lug, U.S. No. 1												
Cochella Valley												
Beauty Seedless	-	-	-	-	-	23.00	-	-	-	-	-	-
Cardinal	-	-	-	-	-	18.10	-	-	-	-	-	-
Perlette	-	-	-	-	-	17.78	-	-	-	-	-	-
Thompson Seedless	-	-	-	-	-	14.94	15.25	-	-	-	-	-
Exotics	-	-	-	-	-	18.00	-	-	-	-	-	-
23-lb. lug U.S. No. 1												
Central San Joaquin Valley												
Calmeria	-	-	-	-	-	-	-	-	11.00	11.05	12.59	14.16
Cardinal	-	-	-	-	-	-	10.10	7.50	-	-	-	-
Emperors	7.00	7.67	-	-	-	-	-	-	9.00	8.81	8.50	9.11
Flame Seedless	-	-	-	-	-	-	11.90	10.07	-	-	-	-
Ruby Seedless	9.00	-	-	-	-	-	-	10.00	11.04	-	-	-
Riblers	-	-	-	-	-	-	-	10.13	8.92	9.35	11.82	14.00
Thompson Seedless	-	-	-	-	-	-	11.38	8.87	13.15	-	-	-
23-lb. lug, U.S. No. 1												
Kern District												
Almeria	-	-	-	-	-	-	-	-	-	10.50	10.96	-
Calmeria	12.00	-	-	-	-	-	-	-	11.00	10.43	13.12	14.50
Cardinal	-	-	-	-	-	-	11.50	9.10	-	-	-	-
Emperor	8.50	8.50	-	-	-	-	-	-	-	8.90	9.56	10.00
Exotic	-	-	-	-	-	-	13.90	10.50	-	-	-	-
Flame Seedless	-	-	-	-	-	-	13.00	10.40	-	-	-	-
Ribler	14.50	-	-	-	-	-	-	9.50	9.50	10.19	12.94	14.57
Thompson Seedless	-	-	-	-	-	-	12.30	9.49	13.80	19.92	-	-
Lodi District												
Tokay	-	-	-	-	-	-	-	8.00	8.00	8.00	-	-
Chile Dock Prices NYC/Philadelphia												
6.5 Kilo lug												
Almeria	-	-	-	12.00	17.50	-	-	-	-	-	-	-
Cardinal	-	14.25	13.00	-	-	-	-	-	-	-	-	-
Emperors	-	-	11.85	-	-	-	-	-	-	-	-	-
Perlette	19.38	26.00	-	-	-	-	-	-	-	-	-	-
Riblers	-	17.17	11.00	9.50	12.00	-	-	-	-	-	-	-
Thompson Seedless	24.75	13.41	12.33	16.50	20.50	-	-	-	-	-	-	-
Tokay	-	-	13.88	10.25	-	-	-	-	-	-	-	-
Mangoes												
Florida												
South Florida												
Flats, 8-16s												
Various Varieties	-	-	-	-	-	5.91	5.68	4.63	-	-	-	-
Nectarines												
California												
Central San Joaquin Valley												
U.S. No. 1, 70-72s Various Varieties												
2-layer lug, tray pack	-	-	-	-	6.62	5.75	6.93	6.93	-	-	-	-
Washington												
2-layer lug, tray pack												
Various Varieties 70-72s	-	-	-	-	-	-	-	8.00	8.09	-	-	-
Chile Dock Prices NYC/Philadelphia												
8.0 Kilo lug												
Various Varieties 60-88s	11.75	12.28	12.23	-	-	-	-	-	-	-	-	-

Table 1. -Continued

OTHER FRUIT-CONTINUED

Shipping point and Description of sale	: Jan.	: Feb.	: Mar.	: Apr.	: May	: June	: July	: Aug.	: Sept.	: Oct.	: Nov.	: Dec.
	Dollars per unit											
Peaches												
Various Varieties, Yellow Flesh												
California												
Central & So. San Joaquin Valley												
U.S. No. 1, 2-layer lug												
Troy Pack, 56-64s	-	-	-	-	11.62	7.46	6.73	4.10	6.07	4.75	-	-
70-72s	-	-	-	-	10.01	4.41	4.78	3.31	4.72	3.87	-	-
Georgia												
Central Georgia												
3/4 bushel crate & carton												
U.S. Extra No. 1												
Mostly Hydrocooling Included												
2" & up	-	-	-	-	17.38	7.28	4.25	5.25	-	-	-	-
2-1/4" & up	-	-	-	-	-	9.48	6.56	6.50	-	-	-	-
Michigan												
West Michigan												
3/4 bushel crate or carton												
U.S. No. 1 Hydrocooling included												
2" & up	-	-	-	-	-	-	-	9.48	-	-	-	-
2-1/4" & up	-	-	-	-	-	-	-	10.58	10.75	-	-	-
New Jersey												
South & Central New Jersey												
Hydrocooled, mostly no grade mark												
3/4 bushel crate or carton												
2-1/2" & up	-	-	-	-	-	-	9.10	9.55	10.92	-	-	-
2-1/4" & up	-	-	-	-	-	-	7.90	8.80	13.63	-	-	-
South Carolina & North Carolina												
U.S. Extra No. 1												
Hydrocooling included												
3/4 bushel crate or carton												
2" & up	-	-	-	-	-	7.31	5.08	-	-	-	-	-
2-1/4" & up	-	-	-	-	-	9.21	6.40	7.25	-	-	-	-
Washington												
Yakima Valley-Wenatchee												
Wash Extra Fancy												
2-layer carton, 40-72s	-	-	-	-	-	-	7.28	6.23	7.00	-	-	-
Mo-Pa-Va.-W.Va												
Appalachian District												
U.S. Extra No. 1 Hydrocooled												
3/4 bushel crate or carton												
2" & up	-	-	-	-	-	-	6.38	6.32	8.50	-	-	-
2-1/4" & up	-	-	-	-	-	-	7.50	8.31	12.00	-	-	-
Chile Dock Price NYC/Philadelphia												
8.0 Kilo lug												
Various varieties 60-84s	11.81	12.87	13.50	-	-	-	-	-	-	-	-	-
Pear												
Standard box & carton, wrapped pack												
U.S. No. 1, 90-135s												
California												
Bartlett												
Sacramento District	-	-	-	-	-	-	11.47	10.87	-	-	-	-
Mendocino County	-	-	-	-	-	-	-	10.87	10.03	10.04	-	-
Lake County	-	-	-	-	-	-	-	-	-	-	-	-

Table 1. -Continued

OTHER FRUIT-CONTINUED

Shipping point and Description of sale	Jan.	Feb.	Mar.	Apr.	May	June	July	Aug.	Sept.	Oct.	Nov.	Dec.
	Dollars per unit											
Pear-Continued												
Standard box & carton, wrapped pack												
U.S. No. 1, 90-135s												
Oregon												
Hood River District												
D'Anjou	9.99	10.64	10.67	-	-	-	-	-	-	-	10.50	10.48
C.A. Storage												
D'Anjou	-	-	12.05	12.60	13.05	-	-	-	-	-	-	-
Medford District												
D'Anjou	9.75	10.00	-	-	-	-	-	-	-	10.25	10.20	10.26
Bartlett	-	-	-	-	-	-	-	-	9.04	8.70	-	-
Bosc	12.13	-	-	-	-	-	-	-	-	14.37	13.62	13.50
Washington												
Yakima Valley-Wenatchee												
Bartlett	-	-	-	-	-	-	-	9.25	8.72	8.83	-	-
D'Anjou	10.08	10.63	11.00	-	-	-	-	-	-	10.50	10.50	10.67
C.A. Storage												
D'Anjou	-	12.50	12.70	13.21	13.59	13.85	-	-	-	-	-	-
Bartlett	-	-	-	-	-	-	-	-	-	11.37	12.50	-
Chile Dock Price NYC/Philadelphia												
Standard carton 100-120s												
Bartlett	-	17.25	17.08	-	-	-	-	-	-	-	-	-
Bosc	-	-	21.90	24.50	-	-	-	-	-	-	-	-
Packham Triumph	-	19.00	20.37	21.00	-	-	-	-	-	-	-	-
Pineapples												
Mexico												
FOB South Texas (Point of Entry)												
Duty and crossing charges paid												
Various Varieties, mostly												
Smooth Cayenne												
40-lb. carton 6-12s	3.87	3.82	4.82	4.33	4.00	-	-	-	-	-	-	-
Plums												
California												
Central San Joaquin Valley												
28-lb. tight/volume fill carton												
U.S. No. 1, 4x5 size												
Red Beaut	-	-	-	-	14.00	14.00	-	-	-	-	-	-
Durado	-	-	-	-	12.66	11.00	-	-	-	-	-	-
Casseiman	-	-	-	-	-	-	6.96	10.08	-	-	-	-
El Dorado	-	-	-	-	-	12.00	8.20	-	-	-	-	-
Laroda	-	-	-	-	-	-	7.65	4.18	-	-	-	-
Queen Ann	-	-	-	-	-	-	7.26	5.00	-	-	-	-
Roysum	-	-	-	-	-	-	-	-	11.00	9.48	-	-
Santa Rosa	-	-	-	-	-	13.48	7.25	4.10	-	-	-	-
Simka	-	-	-	-	-	-	7.36	4.08	-	-	-	-
Chile Dock Price NYC/Philadelphia												
6.5 kilo tugs												
Various Varieties 70-90s	12.50	11.75	9.63	-	-	-	-	-	-	-	-	-
Prunes, Fresh												
Michigan												
West Michigan												
U.S. No. 1, 1-1/4" min.												
Mostly pre-cooled, 30-lb. carton												
Stanley	-	-	-	-	-	-	-	-	5.40	4.79	-	-
Washington												
Yakima Valley-Wenatchee												
Wash. No. 1, 1-1/4" min.												
30-lb. carton												
Italian type	-	-	-	-	-	-	-	4.33	4.57	-	-	-

Table 1. -Continued

MELONS

Shipping point and Description of sale	: Jan. :	Feb. :	Mar. :	Apr. :	May :	June :	July :	Aug. :	Sept. :	Oct. :	Nov. :	Dec. :
	Dollars per unit											
Cantaloups												
Arizona & Palo Verde Valley, Calif												
1/2 carton 18s	-	-	-	-	7.75	7.25	-	-	-	6.60	-	-
Westside District, California												
1/2 carton 18s	-	-	-	-	-	9.25	6.42	4.69	4.58	4.70	-	-
Colorado												
Arkansas Valley, Colorado												
1/2 carton 18s	-	-	-	-	-	-	-	5.50	5.25	-	-	-
Delaware												
Laurel-Auction sale												
Various Varieties, per melon	-	-	-	-	-	-	.39	.37	.22	-	-	-
Texas												
1/2 carton 18s												
Lower Rio Grande Valley	-	-	-	-	-	9.00	6.93	-	-	-	-	-
San Antonio-Winter Garden Dist.	-	-	-	-	-	-	8.44	6.10	-	-	-	-
Mexico												
Duty and crossing charges paid												
FOB South Texas (Point of Entry)												
Junco crates 36s	-	35.00	28.79	26.03	32.60	-	-	-	-	-	-	-
FOB Nogales, Arizona												
(Point of Entry)												
1/2 crates 18s	-	-	-	-	-	13.29	-	-	-	-	-	-
23s	-	-	-	-	10.00	11.25	-	-	-	-	-	-
Honeydews												
2/3 Flat Carton												
California												
San Joaquin Valley 5-6s	-	-	-	-	-	4.13	4.82	3.83	3.11	3.30	-	-
Sacramento Valley 5s	-	-	-	-	-	-	4.48	4.88	2.88	2.87	-	-
Texas												
Lower Rio Grande Valley 6s	-	-	-	-	6.90	4.50	-	-	-	-	-	-
Mexico												
Duty and crossing charges paid												
FOB South Texas (Point of Entry)												
Standard crate, 6-8s	-	12.50	11.88	10.23	-	-	-	-	-	-	-	-
Chile Dock Price NYC/Philadelphia												
Flat crates 6-12s	-	13.00	12.95	14.50	-	-	-	-	-	-	-	-
Watermelons												
Per Pound												
Arizona												
Central Arizona												
Peacock, 15-20-lb. Av.	-	-	-	-	-	.08	.09	-	-	-	-	-
Per Melon												
Delaware												
Laurel (Auction sale) 20-lb.												
Jubilee	-	-	-	-	-	-	1.08	.63	.54	-	-	-
Long Gray	-	-	-	-	-	-	.77	.68	.45	-	-	-
Crimson Sweet	-	-	-	-	-	-	.96	.77	.66	-	-	-
Sugar Baby (icebox type)	-	-	-	-	-	-	.36	.37	.19	-	-	-
Per CWT												
Florida												
Long Gray & Jubilee												
14-16-lb. Av.	-	-	-	-	-	4.50	-	-	-	-	-	-
17-24-lb. Av.	-	-	-	-	-	7.00	5.72	-	-	-	-	-
25-35-lb. Av.	-	-	-	-	-	7.35	6.08	-	-	-	-	-
Missouri												
Southeast Missouri												
Long Gray												
18-24-lb. Av.	-	-	-	-	-	-	5.07	4.08	4.00	-	-	-

Table 1. -Continued

MELONS-CONTINUED

Shipping point and Description of sale	Jan.	Feb.	Mar.	Apr.	May	June	July	Aug.	Sept.	Oct.	Nov.	Dec.
---	------	------	------	------	-----	------	------	------	-------	------	------	------

Dollars per unit

Watermelons-Continued

Per CWT

Georgia

South & Central Georgia

Long Gray, Crimson Sweet
and Jubilee

14-16-lb. Av.

17-24-lb. Av.

North Carolina

Northeastern North Carolina

Long Gray

17-24-lb. Av.

South Carolina

Long Gray

14-16-lb. Av.

17-24-lb. Av.

Crimson Sweet

17-24-lb. Av.

Texas

South, Central & East Texas

Long Gray

16-22-lb. Av.

Virginia

Southeast Virginia

Mostly Long Gray & Jubilee

17-24-lb. Av.

25-lb. Av. & larger

Mexico

Duty and crossing charges paid

FOB Nogales, Arizona

(Point of Entry) Carton, 4-5s

Peacock & Jubilee

NUTS

Pecans

Price paid to grower-Per Pound

Southeast

Fla.-Ga.-Miss.

Natives

Stuarts

Moneymaker

Texas

Natives

Improved Varieties

VEGETABLES

Artichokes

California

Central California

Carton, 18-60s

Asparagus

Pyramid crates

California

Green loose, large

Imperial-Coachella Valley

Delta, 9" cut

Salinas, 9" cut

Table 1. -Continued

VEGETABLES-CONTINUED

Shipping point and Description of sale	: Jan.	: Feb.	: Mar.	: Apr.	: May	: June	: July	: Aug.	: Sept.	: Oct.	: Nov.	: Dec.
	Dollars per unit											
Asparagus-Continued												
Pyramid crates												
Michigan												
West, Central & Southwest Michigan												
Loose Large	-	-	-	24.00	23.22	-	-	-	-	-	-	-
New Jersey-Auction sales												
12-bchs., field run												
Swedesboro	-	-	-	23.16	23.11	23.90	-	-	-	-	-	-
Vineland	-	-	-	24.25	24.36	28.45	-	-	-	-	-	-
Washington												
Yakima												
U.S. No. 1, 30-lb. loose	-	-	-	24.35	23.92	25.50	-	-	-	-	-	-
Bean, Green												
Bushel hamper crate & carton												
Round Green												
South, Central & North Florida	-	20.42	-	15.11	8.57	6.08	-	-	-	-	8.73	12.49
Pompano Beach Florida												
State Farm Market	22.20	17.82	15.23	11.32	8.44	-	-	-	-	-	8.25	12.54
West & Central New York												
Vineland New Jersey												
Auction Sales	-	-	-	-	-	-	-	7.23	5.50	10.79	-	-
South Georgia												
Western North Carolina	-	-	-	-	8.11	6.00	-	-	6.50	9.05	7.50	-
Faison, North Carolina												
Auction Sale	-	-	-	-	6.58	7.49	-	-	-	-	-	-
Pole Type												
South & Central Florida	18.23	-	-	-	9.13	-	-	-	-	-	12.35	-
Western North Carolina												
South Georgia	-	-	-	-	9.93	7.87	-	-	9.63	12.27	-	-
Broccoli												
Carton, 14 bunches												
California												
Salinas-Watsonville	6.48	7.29	8.87	6.43	6.49	5.99	6.40	5.50	6.77	6.59	6.26	7.34
Ocean-Santa Maria Guadalupe	6.19	7.00	6.54	6.26	6.40	5.83	5.91	5.45	6.32	6.26	5.88	6.92
Imperial Coachella Valley	6.73	8.23	-	-	-	-	-	-	-	-	-	9.75
Cabbage												
Green medium-large size												
California												
Imperial-Coachella Valley												
50-lb. carton 24s	3.11	3.20	-	-	-	-	-	-	-	-	-	-
Florida												
1-3/4 bushel crate & carton												
South, Central & North Fla.	5.27	3.56	3.18	3.00	3.00	-	-	-	-	-	-	-
New Jersey												
1-3/4 bushel crate & carton												
South and Central N.J.	-	-	-	-	-	2.63	3.05	-	-	-	-	-
New York												
West & Central N.Y.												
50-lb. bag Danish, medium	4.80	4.08	4.10	4.49	-	-	3.29	2.94	3.01	3.34	3.16	3.19
Long Island-Auction Sales												
1-3/4 bushel crate & carton	-	-	-	-	-	-	-	-	3.06	2.48	2.55	2.89
North Carolina												
1-3/4 bushel crate & carton												
Eastern North Carolina	-	-	-	-	2.95	2.78	-	-	-	-	-	-
Western North Carolina	-	-	-	-	-	-	-	3.19	3.38	-	-	-
Texas												
50-lb. sack												
Lower Rio Grande Valley	3.48	2.08	1.94	2.30	-	-	-	-	-	-	2.02	2.19
San Antonio-Winter Garden	3.60	2.19	2.16	-	-	-	-	-	-	-	-	-
Wisconsin												
Central Wisconsin												
1-3/4 bushel crate & carton	-	-	-	-	-	-	2.50	2.75	2.46	2.73	-	-

Table 1. -Continued

VEGETABLES-CONTINUED

Shipping point and Description of sale	: Jan. :	Feb. :	Mar. :	Apr. :	May :	June :	July :	Aug. :	Sept. :	Oct. :	Nov. :	Dec. :
	Dollars per unit											
Carrots												
48-1-lb. film bags, medium-large size in sacks												
California												
Imperial Coachella Valley	6.85	6.48	5.66	5.46	6.85	-	-	-	-	-	-	-
Kern District	6.68	6.40	5.54	5.34	6.77	4.95	6.48	6.28	5.28	5.26	5.10	6.65
Salinas-King City	-	-	-	-	7.69	6.44	8.36	7.22	6.55	6.68	7.81	7.75
Florida												
South & Central Florida	6.56	6.75	5.00	5.08	6.58	6.00	-	-	-	-	7.83	7.70
Michigan												
	-	-	-	-	-	-	10.00	7.13	6.68	6.86	6.95	-
Texas												
Lower Rio Grande Valley	6.85	6.30	4.92	4.69	-	-	-	-	-	-	-	-
San Antonio-Winter Garden	6.82	6.50	4.75	5.01	7.50	-	-	-	-	-	-	-
Cauliflower												
Carton film wrapped 12s												
California												
Salinas-Watsonville District	8.50	6.93	7.61	7.43	7.86	7.76	8.25	7.51	7.02	7.03	6.55	6.20
Oceans-Santa Maria District	6.88	-	6.00	7.41	7.71	7.46	7.86	7.20	6.32	6.79	6.31	7.68
Florida												
South & Central	9.12	8.67	9.36	7.38	-	-	-	-	-	-	9.17	11.13
New York												
Long Island Auction Sales	-	-	-	-	-	-	-	-	8.38	7.48	8.60	7.33
Long Island crates 12s	-	-	-	-	-	-	-	-	-	-	-	-
Celery												
Crates 2-3 dozen												
Southern California												
Salinas-Watsonville, California	7.66	4.39	3.99	7.72	9.57	7.02	6.25	-	-	-	5.63	6.32
Oceans-Santa Maria-Guadalupe-	-	-	-	-	-	8.49	7.15	6.33	6.28	6.81	6.50	5.73
District California	-	-	-	-	-	7.65	6.82	6.15	6.07	6.34	6.50	6.16
South & Central Florida	7.96	4.72	4.50	7.01	9.66	6.70	-	-	-	-	8.68	7.46
Michigan												
	-	-	-	-	-	-	-	9.47	6.56	6.95	6.25	-
Orange County, New York												
	-	-	-	-	-	-	9.32	7.05	7.14	-	-	-
Corn, Sweet												
Crates, 4-1/2-5 dozen Yellow												
California												
Imperial Coachella Valley	-	-	-	-	6.28	5.23	-	-	-	-	-	-
Florida												
South & Central	6.58	9.45	8.46	5.22	4.27	2.79	-	-	-	5.90	4.35	6.00
North Carolina												
Eastern	-	-	-	-	-	5.41	5.65	-	-	-	-	-
Georgia	-	-	-	-	-	4.28	5.63	-	-	-	-	-
New Jersey												
South & Central	-	-	-	-	-	-	4.68	4.50	-	-	-	-
New York												
Western & Central	-	-	-	-	-	-	4.27	3.83	4.74	-	-	-
Hudson Valley	-	-	-	-	-	-	4.27	3.69	4.44	-	-	-
Washington												
Yakima Valley	-	-	-	-	-	-	5.84	5.50	-	-	-	-
Cucumbers												
Medium, waxed												
Florida												
Bushel basket												
1-1/9 bushel crate & carton												
South & Central Florida	12.40	13.37	14.33	11.56	8.84	5.50	-	-	-	7.35	7.93	10.22
North Florida	-	-	-	10.67	9.55	6.60	-	-	-	-	-	-

Table 1. -Continued

VEGETABLES-CONTINUED

Shipping point and Description of sale	: Jan.	: Feb.	: Mar.	: Apr.	: May	: June	: July	: Aug.	: Sept.	: Oct.	: Nov.	: Dec.
	Dollars per unit											
Cucumber-Continued												
Medium waxed												
Georgia												
1-1/9 bushel crate & carton												
South Georgia	-	-	-	-	6.94	9.24	-	-	10.00	9.00	6.12	-
Michigan												
1-1/9 bushel carton	-	-	-	-	-	-	7.76	5.83	9.00	-	-	-
New York												
1-1/9 bushel crate & carton												
Western & Central New York	-	-	-	-	-	-	6.28	5.88	7.92	-	-	-
North Carolina												
Bushel basket												
1-1/9 bushel crate & carton												
Eastern North Carolina	-	-	-	-	-	11.45	6.00	-	-	-	-	-
Faison, North Carolina	-	-	-	-	-	9.79	9.00	-	-	-	-	-
Auction Sales, unwaxed	-	-	-	-	-	-	-	-	-	-	-	-
South Carolina												
1-1/9 bushel crate & carton												
Charleston-Beaufort-Jasper	-	-	-	-	-	7.81	-	-	-	-	-	-
Texas												
Bushel carton												
Lower Rio Grande Valley	-	-	-	12.00	10.05	-	-	-	-	7.35	7.69	7.95
Mexico												
FOB Nogales, Arizona (Point of Entry)												
Duty and crossing charges paid												
1-1/9 bushel crate & carton	11.60	12.16	12.90	11.35	-	-	-	-	-	-	-	9.65
Eggplant												
Florida												
Pompano Beach State Farmers Market												
Bushel carton												
1-1/9 bu. crate & carton												
medium wrapped	8.09	7.93	10.09	4.93	7.02	-	-	-	-	-	4.89	4.60
South & Central Florida												
1-1/9 bushel crate & carton												
medium wrapped	8.81	9.50	12.49	6.70	6.35	-	-	-	-	-	5.78	5.79
New Jersey												
Vineland-Auction Sales												
Bushel crate & carton medium	-	-	-	-	-	-	-	2.27	3.07	5.28	-	-
North Carolina												
1-1/9 bushel crate & carton												
Faison Auction Sales	-	-	-	-	-	9.45	6.79	-	-	-	-	-
Mexico												
FOB Nogales, Arizona (Point of Entry)												
Duty and crossing charges paid												
Bushel crate & carton												
wrapped, 18-24s	7.55	7.53	8.59	4.95	-	-	-	-	-	-	-	5.21
Endive & Escarole												
Florida												
1-1/9 bushel crate												
South & Central Florida	4.80	3.16	3.00	2.94	3.54	-	-	-	-	3.50	4.23	8.72
Lettuce												
Iceberg type, carton 24s												
Arizona												
Central Arizona	-	-	5.09	2.38	-	-	-	-	-	-	5.93	9.30
Western Arizona	3.71	3.68	4.31	-	-	-	-	-	-	-	6.15	10.31
Eastern Arizona	-	-	-	-	5.47	-	-	-	-	4.50	4.75	-
California												
Imperial Valley	3.48	3.42	3.85	-	-	-	-	-	-	-	-	10.72
Palo Verde Valley	4.31	4.72	-	-	-	-	-	-	-	-	5.22	10.93
Kern District	4.69	3.27	-	-	-	-	-	-	-	4.00	3.54	-
Salinas-Watsonville District	-	-	-	5.58	5.19	4.47	6.94	6.63	5.55	4.26	-	-
Santa Maria-Guadalupe-												
Lompoc District	-	-	-	3.51	4.87	4.17	6.12	6.31	5.38	4.13	3.72	-
Central San Joaquin Valley	-	-	3.70	3.72	-	-	-	-	-	4.50	3.79	-

Table 1. -Continued

VEGETABLES-CONTINUED

Shipping point and Description of sale	: Jan.	: Feb.	: Mar.	: Apr.	: May	: June	: July	: Aug.	: Sept.	: Oct.	: Nov.	: Dec.
	Dollars per unit											
Lettuce-Continued												
Iceberg type, carton 24s												
Colorado												
San Luis Valley	-	-	-	-	-	-	7.69	5.80	6.02	-	-	-
Florida												
South & Central Florida	4.68	4.33	4.77	4.38	6.00	-	-	-	-	-	-	12.02
New Jersey												
South New Jersey	-	-	-	-	8.41	4.77	-	-	5.36	4.00	-	-
New York												
Western & Central New York	-	-	-	-	-	5.25	7.54	6.46	6.25	-	-	-
Orange County, New York	-	-	-	-	-	-	9.05	6.75	-	-	-	-
Texas												
Lower Rio Grande Valley	3.62	3.37	3.99	-	-	-	-	-	-	-	-	10.52
Big Boston Type												
Eastern Boston crate, 24s												
New York												
Orange County, New York	-	-	-	-	-	5.85	5.50	-	-	-	-	-
Florida												
South Florida	3.15	3.75	5.19	4.78	4.91	-	-	-	-	4.40	4.63	9.56
Romaine												
1-1/9 bushel crate & carton												
New York												
Orange County, New York	-	-	-	-	-	-	5.48	5.50	-	-	-	-
Florida												
South Florida	3.00	3.00	3.22	3.60	4.63	-	-	-	-	4.90	4.44	9.30
Onions, Dry												
50-lb. sack												
Arizona												
Central Arizona-U.S. No. 1												
Yellow Granex, Jumbo	-	-	-	-	9.68	10.00	-	-	-	-	-	-
Repacker	-	-	-	-	7.68	7.83	-	-	-	-	-	-
California												
Imperial Valley												
Yellow Granex, Jumbo	-	-	-	14.45	12.56	-	-	-	-	-	-	-
Medium	-	-	-	9.95	9.76	-	-	-	-	-	-	-
Repacker	-	-	-	9.05	8.84	-	-	-	-	-	-	-
Yellow Grano, Jumbo	-	-	-	16.15	11.70	-	-	-	-	-	-	-
Medium	-	-	-	9.80	9.60	-	-	-	-	-	-	-
Repacker	-	-	-	8.95	9.13	-	-	-	-	-	-	-
Kern District												
Yellow, Jumbo	-	-	-	-	-	10.26	9.00	-	-	-	-	-
Medium	-	-	-	-	-	7.84	7.57	-	-	-	-	-
Repacker	-	-	-	-	-	7.81	8.42	-	-	-	-	-
Stockton-U.S. No. 1												
Yellow, Jumbo	-	-	-	-	-	9.99	9.80	-	-	-	-	-
Medium	-	-	-	-	-	8.04	7.46	-	-	-	-	-
Repacker	-	-	-	-	-	7.85	8.96	-	-	-	-	-
Colorado												
U.S. No. 1, 3" & larger												
Yellow Hybrid type												
North & East Colorado	9.25	11.71	-	-	-	-	-	6.54	6.04	7.78	9.11	9.25
Western Slope	8.46	9.82	14.77	-	-	-	-	-	-	7.83	8.25	8.07
Idaho-Oregon												
Western Idaho-Melhour Co. Oreg.												
U.S. No. 1												
Yellow Spanish 2-1/4-3"	6.24	8.23	10.75	-	-	-	-	6.38	4.68	5.61	7.16	7.12
3" & larger	8.23	9.00	13.82	-	-	-	-	6.10	5.42	7.34	8.59	9.47
White, medium	-	-	-	-	-	-	-	7.80	6.99	6.95	8.17	13.17
large	-	-	-	-	-	-	-	9.07	7.44	7.57	9.38	15.15
Michigan												
U.S. No. 1, 70% or more 2" & larger												
Yellow Globe	7.47	8.07	10.14	-	-	-	-	6.58	4.92	4.81	4.84	4.90

Table 1. -Continued

VEGETABLES-CONTINUED

Shipping point and Description of sale	: Jan. :	Feb. :	Mar. :	Apr. :	May :	June :	July :	Aug. :	Sept.:	Oct. :	Nov. :	Dec.
	Dollars per unit											
Onions, Dry-Continued												
50-lb. sack												
New Mexico												
South New Mexico												
Yellow Grano, Jumbo	-	-	-	-	-	6.50	10.63	8.69	-	-	-	-
Repacker	-	-	-	-	-	8.25	9.26	7.70	-	-	-	-
White, Jumbo	-	-	-	-	-	12.38	11.15	10.57	-	-	-	-
Repacker	-	-	-	-	-	7.37	8.56	7.53	-	-	-	-
New York												
Western & Central New York												
U.S. No. 1, 50-70% 2" & larger												
Yellow Globe	8.29	8.52	9.76	9.10	-	-	-	-	5.18	5.08	5.17	5.23
Orange County												
U.S. No. 1, 60-70% 2" & larger												
Yellow Globe	8.22	8.64	10.30	-	-	-	-	6.84	5.56	5.32	5.68	5.63
Texas												
Lower Rio Grande Valley												
80% U.S. No. 1 or better												
Yellow Granex-Grano, Jumbo	-	-	13.65	14.17	-	-	-	-	-	-	-	-
Medium	-	-	11.35	10.70	-	-	-	-	-	-	-	-
Repacker	-	-	9.85	8.00	-	-	-	-	-	-	-	-
Yellow Granex, Jumbo	-	-	-	13.25	-	-	-	-	-	-	-	-
Medium	-	-	-	11.00	-	-	-	-	-	-	-	-
Repacker	-	-	-	8.75	-	-	-	-	-	-	-	-
Yellow Grano, Jumbo	-	-	-	16.50	11.44	-	-	-	-	-	-	-
Medium	-	-	-	10.00	7.73	-	-	-	-	-	-	-
Repacker	-	-	-	9.00	8.27	-	-	-	-	-	-	-
White, Jumbo	-	-	-	17.30	16.11	-	-	-	-	-	-	-
Repacker	-	-	-	9.05	9.58	-	-	-	-	-	-	-
San Antonio-Winter Garden District												
Yellow Grano, Jumbo	-	-	-	-	11.99	8.83	-	-	-	-	-	-
Medium	-	-	-	-	7.82	6.81	-	-	-	-	-	-
Repacker	-	-	-	-	8.39	8.20	-	-	-	-	-	-
White, Jumbo	-	-	-	-	13.42	14.00	-	-	-	-	-	-
Medium	-	-	-	-	11.46	11.80	-	-	-	-	-	-
Repacker	-	-	-	-	9.29	7.81	-	-	-	-	-	-
Washington												
Walla Walla District												
Yellow, 3" & larger	8.03	8.47	14.63	-	-	7.75	8.86	7.45	5.46	7.19	8.63	8.27
Mexico												
FOB South Texas(Point of Entry)												
Duty and crossing charges paid												
U.S. No. 1												
White, Jumbo	15.71	22.58	23.30	19.15	-	-	-	-	-	-	-	-
Repacker	14.42	21.43	19.10	10.98	-	-	-	-	-	-	-	-
Yellow, Jumbo	-	-	-	18.50	-	-	-	-	-	-	-	-
Repacker	-	-	-	9.00	-	-	-	-	-	-	-	-
Onions Green												
Carton 48 Bunches												
Arizona												
Central Arizona	3.90	3.50	3.67	3.53	3.95	-	-	-	-	-	-	5.83
California												
Imperial-Coachella Valley	4.32	3.79	3.69	3.34	-	-	-	-	-	-	-	-
Peppers, Green												
California wonder type large												
California												
Approximate 30-lb. carton												
Gilroy, Hollister, King City	-	-	-	-	-	-	10.62	5.95	4.61	7.18	-	-
Florida												
Pompano Beach- State Fairs. Mkt.												
Bushel carton	12.27	22.83	36.00	15.77	7.75	-	-	-	-	-	7.91	8.46
South, Central & North Florida												
1-1/9 bushel crate & carton	12.56	26.25	37.51	12.60	8.23	6.83	-	-	-	10.00	8.26	9.39

Table 1. -Continued

VEGETABLES-CONTINUED

Shipping point and Description of sale	Jan.	Feb.	Mar.	Apr.	May	June	July	Aug.	Sept.	Oct.	Nov.	Dec.
	Dollars per unit											
Peppers, Green-Continued												
California Wonder type, large												
Michigan												
1-1/9 bushel crates & cartons												
Southeastern Michigan	-	-	-	-	-	-	10.70	6.97	5.77	-	-	-
New Jersey												
1-1/9 bushel crates & carton												
Vineland N.J. Auction Sales	-	-	-	-	-	-	-	4.28	4.73	5.66	-	-
North Carolina												
1-1/9 bushel crate												
Eastern N.C.	-	-	-	-	-	13.50	10.37	-	-	-	-	-
Western N.C.	-	-	-	-	-	-	-	7.71	6.83	-	-	-
Faison-Auction sales												
85% or more U.S. No.1, med.-lge.												
1-1/9 bushel crate	-	-	-	-	11.44	7.48	-	-	-	-	-	-
Texas												
Bushel carton												
Lower Rio Grande Valley	-	-	-	-	9.61	7.00	-	-	-	8.00	8.47	9.86
Mexico												
FOB Nogales Ariz. (Point of Entry)												
Duty and crossing charges paid												
1-1/9 bushel crate & carton	11.10	26.04	34.92	20.75	-	-	-	-	-	-	-	10.50
Potatoes												
Washed, U.S. No.1, Size A												
Arizona												
Central Arizona-CWT basis												
50-lb. carton												
Round Red	-	-	-	-	13.90	-	-	-	-	-	-	-
California												
Kern District-CWT basis												
Long White, 100-lb. sack	-	-	-	-	10.91	10.84	11.00	-	-	-	-	-
50-lb. carton	-	-	-	-	12.41	12.09	12.50	-	-	-	-	-
Round Red, 100-lb. sack	-	-	-	-	12.93	11.42	-	-	-	-	-	-
Centennial, 50-lb. carton 90s	-	-	-	-	15.50	21.62	21.90	-	-	-	-	-
Colorado												
100-lb. sack												
Northern Colorado(Greeley)												
Norgold 50-lb. ctn. CWT basis	-	-	-	-	-	-	-	21.15	18.00	-	-	-
Round Red	-	-	-	-	-	-	-	8.87	-	-	-	-
San Luis Valley												
Red McClures	12.31	13.25	14.70	16.00	-	-	-	-	9.00	8.63	8.41	8.00
Russet & Centennial,												
1-7/8" or 4 oz. min.	-	-	-	-	-	-	-	-	15.43	13.12	12.50	-
50-lb. carton, CWT 80-100s	20.00	20.23	17.70	17.50	18.08	-	-	-	-	13.70	13.75	13.58
Delaware												
50-lb. sack												
Round White	-	-	-	-	-	-	4.55	3.60	-	-	-	-
Florida												
South Florida-50-lb-sack												
Round Red Size A	-	11.00	14.20	8.91	6.25	-	-	-	-	-	-	-
Size B	-	12.00	14.00	8.13	6.25	-	-	-	-	-	-	-
North Florida-50-lb-sack												
Round White	-	-	-	7.20	6.00	6.93	-	-	-	-	-	-
To Processors, bulk per CWT unwashed												
85 or more U.S. No.1, quality												
Round White, 1-5/8" & up	-	-	-	7.40	5.00	6.72	-	-	-	-	-	-
Idaho												
Upper Valley-Twin Falls-Burley												
2" or 4-oz. min., per CWT basis												
Russet, baled												
10-lb. sack non-size	13.44	13.99	14.20	14.18	15.30	13.22	-	-	10.44	9.34	9.11	8.76
50-lb. carton, 80-100s	20.55	19.26	18.36	18.01	21.50	26.03	-	-	16.32	14.16	14.75	13.91
Maine												
50-lb. sack												
Round White	5.01	4.98	5.27	5.20	5.35	-	-	-	-	2.33	2.27	2.22

Table 1. -Continued

VEGETABLES-CONTINUED

Shipping point and Description of sale	: Jan. :	Feb. :	Mar. :	Apr. :	May :	June :	July :	Aug. :	Sept. :	Oct. :	Nov. :	Dec. :
	Dollars per unit											
Potatoes-Continued												
Washed, U.S. No.1, Size A												
Michigan												
50-lb. sack												
Round White	5.77	6.58	6.70	-	-	-	3.90	3.22	3.25	3.39	3.30	3.21
Minnesota												
Anoka-Osseo-Big Lake District												
100-lb. sack or CWT basis												
Round Red	-	-	-	-	-	-	8.08	7.14	6.97	-	-	-
Norgold 50-lb. carton 80-90s	-	-	-	-	-	-	-	20.25	14.88	12.20	-	-
New Jersey												
South & Central New Jersey												
Round White -50-lb. sack	-	-	-	-	-	-	3.98	3.47	3.37	3.31	-	-
New York												
Long Island												
50-lb. sack, 2" min.												
Round White mostly unwashed	6.15	6.12	6.08	-	-	-	4.10	3.46	3.29	3.35	3.30	3.34
Western & Central New York												
50-lb. sack												
Round White	6.82	7.26	7.16	7.15	-	-	5.19	4.05	3.39	3.31	3.13	3.13
North Carolina												
Eastern N.C.-50-lb. sack												
Round White	-	-	-	-	-	5.90	5.00	-	-	-	-	-
North Dakota-Minnesota												
Red River Valley-100-lb. sack												
Round Red	12.41	13.29	14.17	14.13	12.17	-	-	-	7.56	5.87	5.51	5.40
Russet	11.95	-	12.10	11.60	-	-	-	-	-	-	-	-
Oregon-California												
Klamath Basin												
1-7/8" min. CWT basis												
Russet, baled,												
10-lb. film bags non size A	11.50	11.48	11.52	11.10	11.87	-	-	-	-	7.36	7.15	6.90
50-lb. carton 80-100s	16.63	16.58	16.50	16.28	16.76	-	-	-	-	12.13	11.93	11.85
Oregon												
Umatilla Basin CWT basis												
1-7/8" min. CWT basis												
Norgold, baled,												
10-lb. film bag non size A	-	-	-	-	-	-	10.50	10.55	7.81	-	-	-
50-lb. carton 80-100s	-	-	-	-	-	-	19.75	17.32	13.18	-	-	-
Texas												
Hill Plains												
Norgold, 50-lb. carton												
CWT basis 80-100s	-	-	-	-	-	-	23.63	23.00	-	-	-	-
Round Red, 100-lb. sack	-	-	-	-	-	-	9.75	8.31	-	-	-	-
Virginia												
Eastern Shore -50-lb. sack												
Round White	-	-	-	-	-	5.37	4.63	-	-	-	-	-
Washington												
Yakima Valley-Columbia Basin												
2" or 4-oz. min., CWT basis												
Russet, baled												
10-lb. film bags non size A	11.65	11.47	12.21	11.91	13.38	-	-	-	7.70	7.62	7.83	7.63
50-lb. carton 80-100s	18.11	17.31	16.33	12.18	18.78	-	-	-	13.17	11.73	12.16	11.95
Norgold, baled												
10-lb. film bags non size A	-	-	-	-	-	-	10.50	10.76	8.70	-	-	-
50-lb. carton 80-100s	-	-	-	-	-	-	19.50	17.60	13.02	-	-	-
Wisconsin												
100-lb. sack or CWT basis												
Round White	10.85	11.18	11.88	-	-	-	7.00	5.65	5.32	5.25	5.14	5.25
Russet, baled												
10-lb. film bags non size A	-	14.00	13.59	13.50	-	-	-	-	-	7.43	7.33	7.42
50-lb. carton, 80-100s	19.12	16.93	16.99	16.50	-	-	-	-	11.75	12.00	11.86	11.43
Radishes												
Carton, film bag, red 30-6 oz												
Florida	2.00	2.30	2.72	2.45	2.95	2.50	-	-	-	2.50	4.86	4.14
Michigan	-	-	-	-	-	-	3.46	2.69	3.46	4.17	-	-

Table 1. -Continued

VEGETABLES-CONTINUED

Shipping point and Description of sale	Jan.	Feb.	Mar.	Apr.	May	June	July	Aug.	Sept.	Oct.	Nov.	Dec.
	Dollars per unit											
Spinach												
Savory type, bushel or crate												
New Jersey												
Vineland-Auction sale	-	-	-	2.77	3.42	5.71	-	-	-	-	-	-
Texas												
San Antonio Winter Garden	5.61	5.53	5.47	-	-	-	-	-	-	-	-	6.00
Squash												
Yellow Straightneck-small												
1/2 bushel basket & carton												
5/9 bushel crate & carton												
South & Central Florida												
Pompano Beach	-	-	-	6.03	-	-	-	-	-	6.44	9.76	-
Farmers Market Florida												
South Georgia	11.07	-	9.45	4.12	5.50	-	-	-	-	-	9.50	6.83
Falson N.C. Auction Sale												
Bridgton-Swedesboro N.J. Auction	-	-	-	-	3.47	3.04	-	-	-	-	-	-
Yellow Crookneck bu. carton small												
South & Central Florida												
South Georgia	20.69	25.13	15.15	8.63	5.85	-	-	-	-	-	8.36	7.04
South Georgia												
Zucchini 1/2 bu. bkts. & ctns	-	-	-	-	5.99	7.74	-	-	9.25	10.50	7.59	-
5/9 bushel crates & carton												
South & Central Florida												
Pompano Beach	10.31	9.48	10.56	4.57	4.89	6.50	-	-	-	4.81	8.58	8.38
Farmers Market Florida												
South Georgia	11.72	9.48	7.74	3.95	5.19	-	-	-	-	-	8.28	7.60
Falson N.C. Auction Sale												
South Georgia	-	-	-	-	2.32	4.12	-	-	-	-	-	-
Bridgton-Swedesboro N.J. Auction												
Mexico-FOB Nogales, Arizona	-	-	-	-	-	-	4.76	5.16	5.63	-	-	-
(Point of Entry) Duty and crossing charges paid												
Acorn -1-1/9 bu. crts. & ctns.	13.09	10.65	19.41	-	-	-	-	-	-	-	-	-
South & Central Florida												
Pompano Beach Florida	10.73	-	-	5.29	5.09	-	-	-	-	-	-	7.73
Falson N.C. Auction Sales												
Bridgton-Swedesboro N.J. Auction	11.38	15.00	13.50	8.25	5.02	-	-	-	-	-	-	9.50
Bridgton-Swedesboro N.J. Auction												
Butternut-1-1/9 bu. crt. medium	-	-	-	-	-	-	-	2.91	4.26	-	-	-
South & Central Florida												
Falson N.C. Auction Sale	8.75	-	-	9.63	-	-	-	-	-	-	-	8.08
Bridgton-Swedesboro N.J. Auction												
	-	-	-	-	-	6.59	4.59	-	-	-	-	-
	-	-	-	-	-	-	-	3.91	3.72	-	-	-
Sweet Potatoes												
California												
Atwater Livingston 40-lb. carton												
Yellow Jersey	10.80	10.80	10.80	10.88	11.28	11.20	-	-	13.10	12.00	11.80	11.72
Porto Rico type Garnet	10.60	10.50	11.06	11.85	12.15	14.80	-	-	10.33	9.52	9.76	9.89
Jewel	10.40	10.64	11.62	12.55	14.28	12.40	-	-	10.66	9.80	9.80	9.76
Georgia												
50-lb. crate & carton												
washed & waxed, U.S. No. 1												
Jewel, cured	11.00	11.56	11.75	-	-	-	-	-	-	-	12.00	10.47
Jewel, uncured	-	-	-	-	-	-	13.32	11.07	9.29	9.28	9.75	-
Louisiana												
50-lb. crate & carton U.S. No. 1												
Porto Rico type, cured	12.81	13.11	14.35	16.13	-	-	-	-	-	-	13.06	12.25
uncured	-	-	-	-	-	-	13.32	11.07	9.29	9.28	9.75	-
North Carolina												
Eastern N.C.												
50-lb. crate & carton U.S. No. 1												
Jewel, cured	11.12	12.40	14.30	15.50	16.60	-	-	-	-	-	11.84	10.13
uncured	-	-	-	-	-	-	-	-	8.53	10.52	10.33	-
Virginia												
Eastern Shore												
50-lb. crt. & ctn., washed												
Jewel, cured	10.31	12.25	-	-	-	-	-	-	-	-	11.63	10.50
uncured	-	-	-	-	-	-	-	-	8.44	8.50	-	-

Table 1. -Continued

VEGETABLES-CONTINUED

Shipping point and Description of sale	Jan.	Feb.	Mar.	Apr.	May	June	July	Aug.	Sept.	Oct.	Nov.	Dec.
Dollars per unit												
Tomatoes												
Arkansas												
Bradley-Drew County												
Auction prices to grower												
20-lb. carton Pink												
Place Pack, large	-	-	-	-	-	5.49	6.03	-	-	-	-	-
California 85% or more U.S. No. 1												
Imperial Valley												
30-lb. carton Green												
large	-	-	-	-	7.47	-	-	-	-	-	-	-
medium	-	-	-	-	7.34	-	-	-	-	-	-	-
2-layer flat Pink												
Place pack, 4x5-5x6s	-	-	-	-	6.53	-	-	-	-	-	-	-
Cutler-Orosi-Kern District												
2-layer flat Pink												
Place pack 4x5-5x6s	-	-	-	-	-	5.35	5.55	-	-	-	-	-
Southern California												
2-layer flat Pink												
Place pack 4x5-5x6s	-	-	-	-	-	4.58	6.84	6.11	5.35	5.35	3.81	5.12
3-layer lug Pink												
6x6s	-	-	-	-	-	6.84	8.02	7.61	6.98	7.89	5.86	7.38
6x7s	-	-	-	-	-	6.11	7.37	7.41	6.53	7.17	5.26	6.57
Gonzales-King City District												
30-lb. carton Green												
Extra large	-	-	-	-	-	-	9.00	6.75	7.19	8.29	-	-
Large	-	-	-	-	-	-	8.00	5.81	6.15	7.29	-	-
Medium	-	-	-	-	-	-	7.00	4.75	4.12	6.25	-	-
Northern San Joaquin Valley												
30-lb. carton Green												
Extra large	-	-	-	-	-	-	9.04	7.67	7.58	8.27	6.00	-
large	-	-	-	-	-	-	7.96	6.67	5.33	7.35	5.00	-
medium	-	-	-	-	-	-	6.99	5.79	4.32	6.23	4.00	-
Florida 85% or more U.S. No. 1												
South Florida												
30-lb. carton Green												
5x6s	14.75	18.48	21.42	11.18	5.33	-	-	-	-	-	6.90	8.13
6x6s	13.50	17.48	20.04	9.68	3.80	-	-	-	-	-	5.90	6.46
20-lb. carton Pink												
5x6s	10.27	11.86	15.68	7.93	3.45	-	-	-	-	-	4.73	5.56
6x6s	9.49	11.14	15.15	7.60	3.25	-	-	-	-	-	4.73	5.00
Central Florida												
20-lb. carton Pink												
5x6s	-	-	-	6.00	6.15	8.20	-	-	-	8.25	7.60	7.75
6x6s	-	-	-	5.00	5.02	7.20	-	-	-	7.25	6.60	5.70
North Florida												
30-lb. carton Green												
5x6s	-	-	-	-	-	7.26	-	-	-	-	-	-
6x6s	-	-	-	-	-	5.65	-	-	-	-	-	-
Michigan												
South Michigan												
10-lb. carton, place pack												
5x6s	-	-	-	-	-	-	4.13	2.89	2.79	-	-	-
New Jersey												
Sweedsboro-Auction Sales												
1/2-bushel hamper Pink												
medium large	-	-	-	-	-	16.55	10.40	4.51	-	-	-	-
North Carolina												
Western North Carolina												
20-lb. carton Pink												
Extra large-large	-	-	-	-	-	-	6.92	4.89	5.81	-	-	-

Table 1. -Continued

VEGETABLES-CONTINUED

Shipping point and Description of sale	: Jan.	: Feb.	: Mar.	: Apr.	: May	: June	: July	: Aug.	: Sept.	: Oct.	: Nov.	: Dec.
Dollars per unit												
Tomatoes-Continued												
South Carolina 85% or more U.S. No. 1												
Charleston-Beauford District												
30-lb. carton Green												
5x6s	-	-	-	-	-	-	-	7.02	-	-	-	-
6x6s	-	-	-	-	-	-	-	5.37	-	-	-	-
Mexico 85% or more U.S. No. 1												
Duty and crossing charges paid												
FOB Nogales, Ariz. (Point of Entry)												
3-layer lug, place pack Pink												
6x6s	13.83	13.75	13.26	9.21	6.22	8.30	-	-	-	-	-	-
6x7s	12.83	12.54	15.40	7.94	5.90	8.30	-	-	-	-	-	-
2-layer flats, place pack Pink												
4x5-5x6s	11.83	11.41	14.94	7.54	4.80	6.90	-	-	-	-	-	-

Table 2. —Wholesale prices of specified fruit and vegetables at New York City and Chicago, each month by market origin, and description, 1961 1/

BERRIES

Market, origin and Description	: Jan. :	Feb. :	Mar. :	Apr. :	May :	June :	July :	Aug. :	Sept.:	Oct. :	Nov. :	Dec.
	Dollars per unit											
Blueberries												
Per Pint												
New York												
North Carolina	-	-	-	-	1.75	.93	-	-	-	-	-	-
New Jersey	-	-	-	-	-	.87	.75	.87	-	-	-	-
Michigan	-	-	-	-	-	-	-	1.01	1.13	-	-	-
Chicago												
Michigan	-	-	-	-	-	-	.81	.72	.96	-	-	-
North Carolina	-	-	-	-	1.95	1.15	-	-	-	-	-	-
New Jersey	-	-	-	-	-	1.00	.88	-	-	-	-	-
Illinois	-	-	-	-	-	1.30	-	-	-	-	-	-
Indiana	-	-	-	-	-	1.00	.75	.66	-	-	-	-
Cranberries												
24-12 oz. film bags, carton												
New York												
Mass., Early Black	-	-	-	-	-	-	-	-	12.50	12.50	13.50	-
Late Howes	-	-	-	-	-	-	-	-	-	-	-	21.00
Chicago												
Mass., Early Black	-	-	-	-	-	-	-	-	17.50	15.91	17.66	-
Late Howes	16.00	11.00	-	-	-	-	-	-	-	-	-	24.00
Wisc., Searles	-	-	-	-	-	-	-	-	-	16.41	14.16	19.00
Raspberries												
Reds 1/2 Pint												
New York												
California	-	-	-	-	2.75	3.25	2.91	2.25	1.85	1.68	1.75	-
Chicago												
California	-	-	-	-	2.95	1.81	-	1.75	1.60	1.44	-	-
Washington	-	-	-	-	-	-	1.25	1.09	-	-	-	-
Oregon	-	-	-	-	-	-	1.24	-	-	-	-	-
Strawberries												
Various Varieties, Per Pint												
New York												
California	-	1.06	.97	.78	.70	.83	1.00	1.05	.80	1.47	1.48	-
Florida	1.45	.96	.72	.56	-	-	-	-	-	-	-	2.58
Mexico	.88	-	-	-	-	-	-	-	-	-	-	1.63
Chicago												
California	1.66	1.10	1.00	.75	.62	.77	.88	.83	.61	.89	1.80	1.75
Florida	1.46	1.02	.75	.61	-	-	-	-	-	-	-	-
Mexico	.91	.71	-	-	-	-	-	-	-	-	-	1.13
CITRUS FRUITS												
Grapefruit												
Carton, 32-40s												
New York												
Fla. Indian River District												
White	6.94	6.94	6.68	7.13	7.63	8.33	-	-	9.00	7.88	6.31	6.60
Red	7.69	7.69	7.56	7.94	8.63	9.00	-	-	-	-	7.38	7.60

1/ Price shown are simple average of representative prices for Tuesday of each week during the month.

Table 2. --Continued

CITRUS FRUITS--CONTINUED

Market, origin and Description	Jan.	Feb.	Mar.	Apr.	May	June	July	Aug.	Sept.	Oct.	Nov.	Dec.
	Dollars per unit											
Grapefruit--Continued												
Carton, 32-40s												
Chicago												
Fla. Indian River District												
White	7.56	8.50	7.90	8.12	8.56	9.25	-	11.12	10.58	8.43	7.66	7.68
Red	7.87	8.87	8.40	8.86	9.31	10.83	-	11.12	10.58	8.43	7.66	7.68
Texas, Ruby Red	7.06	8.00	8.06	8.25	-	-	-	-	-	9.00	9.45	7.80
Star Ruby	-	-	-	-	-	-	-	-	-	-	10.00	10.41
Lemon 2/												
Carton 140-165s												
New York												
California	-	-	10.50	11.00	11.69	14.00	18.19	17.25	-	-	10.75	11.88
Florida	-	-	-	-	-	-	-	-	13.60	10.88	-	-
Chicago												
California	11.06	10.18	10.43	10.96	11.25	13.12	16.00	18.43	17.44	12.83	11.18	11.75
Arizona	9.87	9.00	9.33	-	-	-	-	-	-	-	11.00	12.55
Limes												
10-lb. carton, Persian Seedless 48-72s												
New York												
Florida	4.88	6.63	7.95	12.38	7.50	6.25	2.25	2.35	3.65	5.00	3.58	5.30
Mexico	3.68	6.25	7.65	12.37	7.00	5.50	-	-	3.75	6.25	2.05	-
Chicago												
Florida	5.25	6.56	8.81	12.75	10.91	6.93	3.19	2.77	3.85	4.43	4.10	4.87
Mexico	4.31	5.37	8.31	11.81	9.00	5.87	3.00	2.41	3.75	3.62	3.21	5.50
Oranges												
Carton												
New York												
Calif. 72-113s Navels	9.00	8.63	7.95	7.75	8.69	9.05	-	-	-	-	10.00	10.20
Valencias	-	-	-	-	-	-	13.75	11.75	11.30	9.50	9.50	-
Florida												
Various Varieties 64-100s	7.08	8.63	7.91	7.91	8.53	9.14	12.69	13.17	13.00	8.75	7.25	6.95
Chicago												
Calif. 72-113s Navels	9.56	9.66	8.70	6.47	8.62	9.55	12.25	-	-	-	10.18	9.97
Valencias	-	-	-	-	8.50	9.33	13.37	11.75	11.30	10.37	10.25	-
Florida												
Various Varieties 64-100s	7.93	9.31	9.03	8.65	6.90	9.93	15.00	-	-	-	-	7.98
Tangelos												
Grate & carton 80-100s												
New York												
Florida	8.75	9.75	-	-	-	-	-	-	-	-	8.00	9.25
Chicago												
Florida	9.25	9.87	8.50	-	-	-	-	-	-	-	-	-
Tangerines												
Grate & carton 120-176s												
New York												
Florida	8.56	-	-	-	-	-	-	-	-	-	12.88	12.50
Chicago												
Florida	9.62	13.25	14.15	15.41	-	-	-	-	-	12.16	12.30	10.93
Mexico	8.25	12.50	-	-	-	-	-	-	-	13.00	12.80	10.93

2/ Auction prices, weighted average, all sizes and grades.

Table 2. --Continued

OTHER FRUIT

Market, origin and Description	Jan.	Feb.	Mar.	Apr.	May	June	July	Aug.	Sept.	Oct.	Nov.	Dec.
Dollars per unit												
Apples												
Carton												
New York												
U.S. Fancy												
N.Y. Hudson Valley												
Film bags, 12-3-lb. 2-1/4" min.												
Cortland	6.41	-	-	-	-	-	-	-	-	8.25	-	-
McIntosh	6.58	-	-	-	-	-	-	-	-	9.00	8.75	9.50
Red Delicious	7.50	-	-	-	-	-	-	-	-	-	-	8.00
C.A. Storage												
Cortland	-	8.67	7.25	-	-	-	-	-	-	-	-	-
Red Delicious	-	8.93	7.62	7.68	7.68	-	-	-	-	-	-	-
Cell Pack, 100-120s												
McIntosh	8.75	-	-	-	-	-	-	-	-	-	-	-
McIntosh-C.A. Storage	9.50	10.00	9.56	-	-	-	-	-	-	-	-	-
N.Y. Lake Champlain												
McIntosh U.S. Fancy												
Cell Pack 100-120s	10.25	-	-	-	-	-	-	-	-	15.50	14.00	16.00
C.A. Storage	10.75	11.13	11.30	11.27	11.13	11.50	-	-	-	-	-	-
Film bags,												
12-3-lb. 2-1/4" min.												
C.A. Storage	7.50	7.58	7.74	7.68	7.71	11.50	-	-	-	9.50	9.75	9.62
New England												
Film bags, 12-3-lb. 2-1/4" min.												
McIntosh U. S. No. 1	7.08	-	-	-	-	-	-	-	-	-	8.50	-
Cell Pack U.S. Extra Fancy 100-120s	-	-	-	-	-	-	-	-	-	-	-	-
McIntosh	12.33	-	-	-	-	-	-	-	13.00	13.87	14.87	15.00
McIntosh C.A. Storage	12.50	11.25	11.13	11.75	12.00	12.75	12.75	13.00	-	-	-	-
Washington												
Wash. Extra Fancy or U.S. Extra Fancy												
Tray Pack, 100-125s												
Red Delicious	12.50	12.50	-	-	-	-	-	-	23.33	18.63	17.38	18.80
Red Delicious C.A. Storage	-	13.08	13.45	13.13	13.50	14.31	15.50	21.25	25.00	-	-	-
Chicago												
U.S. Fancy												
Film bags, 12-3-lb. 2-1/4" min.												
Michigan												
Jonathan	6.56	6.50	-	-	-	-	-	-	8.75	8.33	7.05	8.40
McIntosh	6.56	6.75	-	-	-	-	-	-	8.50	8.35	8.50	-
Red Delicious	7.06	7.00	-	-	-	-	-	-	-	8.00	8.50	9.00
C.A. Storage												
Jonathan	7.37	7.68	8.14	7.81	7.50	-	-	-	-	-	-	-
McIntosh	7.36	7.68	8.00	7.87	-	-	-	-	-	-	-	-
Red Delicious	8.75	8.75	8.61	8.68	8.50	8.58	-	-	-	-	-	-
Tray Pack 88-113s												
Washington Extra Fancy												
or U.S. Grade												
Red Delicious	12.25	12.31	-	-	-	-	-	-	20.58	18.27	19.23	18.43
Red Delicious-C.A. Storage	-	14.83	14.30	13.50	13.31	13.50	14.50	18.06	18.00	-	-	-
Avocados												
Various Varieties, flat & carton												
(Approx. 13-lb.)												
New York												
California	6.56	6.56	7.85	7.12	7.37	7.30	7.56	6.87	7.64	7.18	7.62	6.95
Florida	6.61	7.41	-	-	-	-	8.00	7.87	6.70	4.87	5.12	5.50
Chicago												
California	7.00	6.50	7.25	6.81	7.83	5.62	6.00	5.56	8.00	9.36	7.25	7.50
2-layer, 40-48s	18.00	-	-	-	-	-	-	-	-	11.00	13.62	19.20
Bananas												
Import-40-lb. carton												
New York	9.38	10.25	10.87	11.15	11.59	10.36	9.06	8.81	9.90	9.94	10.00	10.50
Chicago	9.71	10.81	11.79	11.50	11.59	10.18	8.96	9.16	10.85	9.43	9.85	10.65

Table 2. --Continued

OTHER FRUIT--CONTINUED

Market, origin and Description	Jan.	Feb.	Mar.	Apr.	May	June	July	Aug.	Sept.	Oct.	Nov.	Dec.
Dollars per unit												
Cherries												
Lug or carton, 12 row size & 1 gr.												
New York												
California 18-lb.	-	-	-	-	21.40	15.50	-	-	-	-	-	-
Northwest 20-lb.	-	-	-	-	-	22.67	18.67	19.50	-	-	-	-
Chicago												
California 18-lb.	-	-	-	-	16.50	20.75	-	-	-	-	-	-
Northwest, 20-lb.	-	-	-	-	-	21.00	16.62	-	-	-	-	-
Grapes												
New York												
22-lb. lug												
California, Cardinal	-	-	-	-	20.00	18.75	13.16	10.50	-	-	-	-
Perlette	-	-	-	-	22.83	23.50	-	-	-	-	-	-
23-lb. lug												
California, Calmeria	-	-	-	-	-	-	-	-	-	-	16.38	-
Emperors	13.75	-	-	-	-	-	-	-	14.50	13.50	13.38	-
Riblers	-	-	-	-	-	-	-	15.50	14.80	14.75	15.25	-
Thompson Seedless	-	-	-	-	22.08	21.31	13.25	16.30	19.00	-	-	-
Flame Seedless	-	-	-	-	23.50	23.00	16.50	16.25	-	-	-	-
Lug approx. 14-15 lb. wrapped												
Chile												
Thompson Seedless	-	17.38	13.05	18.63	24.50	-	-	-	-	-	-	-
Riblers	-	-	12.63	11.38	15.25	-	-	-	-	-	-	-
Emperors	-	-	12.50	10.25	11.75	-	-	-	-	-	-	-
Chicago												
22-lb. lug												
California, Cardinal	-	-	-	-	22.00	19.87	14.37	-	-	-	-	-
Perlette	-	-	-	-	35.00	23.50	20.75	-	-	-	-	-
Thompson Seedless	-	-	-	-	-	19.75	18.65	13.50	16.10	16.00	-	-
23-lb. lug												
California, Calmeria	-	-	-	-	-	-	-	-	-	15.00	15.62	17.00
Emperors	13.87	13.75	14.50	-	-	-	-	-	-	13.75	13.50	14.60
Riblers	17.62	-	-	-	-	-	-	-	14.00	15.00	14.25	17.00
Flame Seedless	-	-	-	-	-	21.50	23.50	-	14.50	17.00	-	-
Almeria	-	-	-	-	-	-	-	-	-	-	15.33	15.75
Lug approx. 14-15-lb. wrapped												
Chile												
Perlette	-	15.58	-	-	-	-	-	-	-	-	-	-
Thompson Seedless	-	-	-	-	-	-	-	-	-	-	-	-
Riblers	-	-	14.93	12.62	-	18.50	-	-	-	-	-	-
Emperors	-	-	16.70	11.50	12.18	13.00	-	-	-	-	-	-
Cardinal	-	17.58	15.50	-	-	-	-	-	-	-	-	-
Tokay	-	-	17.00	-	-	-	-	-	-	-	-	-
Nectarines												
Various Varieties, 2-layer lug 56-88s												
New York												
California	-	-	-	-	20.00	15.90	11.75	9.20	11.50	-	-	-
Chile	-	-	15.33	-	-	-	-	-	-	-	-	-
Chicago												
California	-	-	-	-	-	12.87	11.68	8.62	8.58	-	-	-
Chile	14.58	15.06	17.06	22.50	-	-	-	-	-	-	-	-
Peaches												
Various varieties, Yellow Flesh												
U.S. No. 1, or better												
New York												
2-layer lug 56-72s												
California	-	-	-	-	15.75	11.00	11.25	10.38	-	-	-	-
3/4 bu. crate or carton												
Georgia & Florida 2" & up	-	-	-	-	20.00	9.17	-	-	-	-	-	-
North & South Carolina 2" & up	-	-	-	-	20.00	9.17	6.00	7.00	-	-	-	-
2-1/4" & up	-	-	-	-	-	-	7.67	9.17	11.17	-	-	-
New Jersey 2-1/4" & up	-	-	-	-	-	-	-	-	16.13	-	-	-

Table 2. --Continued

OTHER FRUIT--CONTINUED

Market, origin and Description	Jan.	Feb.	Mar.	Apr.	May	June	July	Aug.	Sept.	Oct.	Nov.	Dec.
Dollars per unit												
Peaches--Continued												
Various varieties, Yellow Flesh												
U.S. No. 1, or better												
Chicago												
Calif., 2-layer lug 56-72s	-	-	-	-	11.72	11.50	10.00	-	-	-	-	-
3/4 bu. crate or carton 2" & up	-	-	-	-	-	9.00	7.00	-	-	-	-	-
Georgia	-	-	-	-	-	8.50	7.25	-	-	-	-	-
South Carolina	-	-	-	-	-	-	-	-	-	-	-	-
Chile	-	-	-	-	-	-	-	-	-	-	-	-
2-layer lug 48-50s	15.41	15.00	15.66	-	-	-	-	-	-	-	-	-
Pears												
Standard box carton, U.S.No.1, 90-135s												
New York												
Calif., Bartlett	-	-	-	-	-	-	-	-	-	14.50	-	-
Wash-Oreg., D'Anjou	14.38	14.81	16.50	18.25	15.25	-	-	-	-	-	15.25	14.40
Chile	-	-	-	-	-	-	-	-	-	-	-	-
Bosc.	-	-	24.50	25.25	-	-	-	-	-	-	-	-
Packham Triumph	-	-	23.33	23.50	-	-	-	-	-	-	-	-
Chicago												
Calif., Bartlett	-	-	-	-	-	16.33	15.27	13.10	13.43	-	-	-
Wash., Bartlett	-	-	-	-	-	-	-	14.00	12.93	13.25	-	-
D'Anjou	13.91	13.87	14.38	-	-	-	-	-	-	-	-	-
C.A. Storage-D'Anjou	-	-	17.50	18.12	18.93	18.00	19.00	-	-	-	-	-
Chile	-	-	-	-	-	-	-	-	-	-	-	-
Bartlett	-	-	24.00	-	-	-	-	-	-	-	-	-
Bosc.	-	-	26.00	-	-	-	-	-	-	-	-	-
Packham Triumph	-	23.00	22.75	22.00	-	-	-	-	-	-	-	-
Plum												
28-lb. carton 4x4 size												
New York												
California, Laroda	-	-	-	-	-	11.50	7.50	-	-	-	-	-
Eldorado	-	-	-	-	-	12.83	-	-	-	-	-	-
Friars	-	-	-	-	-	-	8.50	-	-	-	-	-
Red Beaut	-	-	-	-	30.00	18.00	-	-	-	-	-	-
Santa Rosa	-	-	-	-	-	19.00	17.50	-	-	-	-	-
Chicago												
California, Black Beaut	-	-	-	-	-	19.12	-	-	-	-	-	-
Laroda	-	-	-	-	-	13.75	9.25	-	-	-	-	-
Friar	-	-	-	-	-	13.00	10.13	-	-	-	-	-
Rosemary	-	-	-	-	-	10.00	-	-	-	-	-	-
Red Beaut	-	-	-	30.00	17.81	14.00	-	-	-	-	-	-
Roysum	-	-	-	-	-	-	-	15.66	-	-	-	-
Santa Rosa	-	-	-	-	18.75	13.75	9.25	-	-	-	-	-
Prunes, Fresh												
30-lb. carton, Italian type												
New York												
Northwest	-	-	-	-	-	-	-	7.00	7.65	-	-	-
Michigan Stanley	-	-	-	-	-	-	-	-	6.25	-	-	-
Chicago												
Northwest	-	-	-	-	-	-	-	6.75	7.62	-	-	-
Michigan Stanley	-	-	-	-	-	-	-	5.75	6.00	-	-	-
MELONS												
Cantaloups												
New York												
Calif. 1/2 crate & carton 18s	-	-	-	-	-	10.70	12.13	9.13	9.45	9.50	13.13	-
Mexico, jumbo crate 36s	-	-	26.90	33.25	36.25	36.25	25.00	-	-	-	-	-
Texas, 1/2 carton 18s	-	-	-	-	-	8.90	9.00	8.25	-	-	-	-
Chicago												
Calif., jumbo crate 36s	-	41.00	35.80	33.12	-	-	-	-	-	-	-	-
1/2 crate & carton 18s	-	-	-	-	13.00	10.00	12.18	9.25	8.75	9.68	11.75	-
Mexico, 1/2 crate & carton 18s	-	-	-	-	16.75	11.00	-	-	-	-	-	-
Texas, 1/2 carton, 18s	-	-	-	-	13.00	7.75	8.75	-	-	-	-	-

Table 2. --Continued

MELONS--CONTINUED

Market, origin and Description	: Jan. :	Feb. :	Mar. :	Apr. :	May :	June :	July :	Aug. :	Sept.:	Oct. :	Nov. :	Dec.
	Dollars per unit											
Honeydews												
2/3 carton 5-8s												
New York												
Arizona	-	-	-	-	-	7.38	-	-	-	-	-	-
Central America	12.50	11.75	10.70	9.67	15.50	-	-	-	-	-	-	-
California	9.00	-	-	-	-	9.50	8.63	6.69	6.25	7.00	9.19	7.75
Texas	-	-	-	-	9.00	7.31	-	-	-	-	-	-
Mexico	-	-	-	9.95	12.33	-	-	-	-	-	-	-
Chicago												
California	14.00	14.00	-	-	-	-	8.43	7.98	6.34	6.06	9.00	12.00
Texas	-	-	-	-	-	9.25	6.12	-	-	-	-	-
Mexico flat carton 10-12s	8.50	14.00	13.87	13.25	15.91	-	-	-	-	-	-	-
Chile flat crates 10-12s	9.50	15.16	16.00	15.00	-	-	-	-	-	-	-	-
Watermelon												
New York												
Various Varieties per lb.												
Florida	-	-	-	-	-	.13	.11	-	-	-	-	-
South Carolina	-	-	-	-	-	.13	.11	-	-	-	-	-
Virginia	-	-	-	-	-	-	.09	.08	-	-	-	-
Texas	-	-	-	-	-	-	-	-	.12	.14	.16	.27
Chicago												
Various Varieties per lb.												
Florida	.23	.24	-	-	.13	.13	.15	-	-	-	.23	.25
Mississippi	-	-	-	-	-	-	.10	.10	-	-	-	-
Georgia	-	-	-	-	-	-	.10	-	-	-	-	-
Indiana	-	-	-	-	-	-	-	.09	.07	-	-	-
Texas	-	-	-	-	-	-	-	-	.11	.14	.20	-
Jubilee Carton 3-4s per lb.	-	-	-	-	-	-	-	-	-	-	-	-
Mexico	.25	.24	.24	.31	.21	-	-	-	-	-	-	-
VEGETABLES												
Artichokes												
Globe type 7" carton 48-60s												
California												
New York	11.83	17.75	10.30	10.00	9.66	6.00	11.00	7.33	13.33	8.75	11.50	15.60
Chicago	16.62	17.83	14.10	10.62	11.50	12.70	17.00	-	14.00	10.83	15.62	17.50
Asparagus												
Pyramid crate & carton 30-lb.												
New York												
Calif., loose large	-	41.83	31.00	27.87	22.12	-	-	-	-	-	-	-
N.J. 12-bunches, field, run	-	-	-	27.50	26.50	22.50	-	-	-	-	-	-
Mexico 1/2 carton, 6 bunches	-	-	-	-	-	-	-	-	-	-	-	-
Extra Select	39.00	30.00	-	-	-	-	-	-	-	-	-	-
Wash. U.S. 1-3/8" min. diameter	-	-	-	29.50	30.33	-	-	-	-	-	-	-
Chicago												
Calif., loose large	-	28.16	34.50	30.50	29.00	-	-	-	-	-	-	-
1/2 ctns. 6 bunches select	17.83	-	-	-	-	-	-	-	-	-	-	-
Mexico, 1/2 pyramid carton	-	-	-	-	-	-	-	-	-	-	-	-
6 bunches select	18.50	18.00	17.75	-	-	-	-	22.00	19.75	24.00	-	-
Beans, Green												
Bushel basket, hamper or crate												
New York												
Florida	24.87	26.66	19.50	14.50	11.62	9.50	-	-	-	16.00	12.50	16.30
South Carolina	-	-	-	-	11.00	9.00	-	-	-	-	-	-
New Jersey	-	-	-	-	-	7.50	8.87	9.00	8.65	8.65	-	-
N.Y.L.I.	-	-	-	-	-	-	-	-	-	7.50	-	-
Mexico, 1-1/9 bu. crt. improved	-	-	-	-	-	-	-	-	-	-	-	-
Kentucky wonder type	20.00	27.32	11.00	-	-	-	-	-	-	-	-	-

Table 2. --Continued

VEGETABLES--CONTINUED

Market, origin and Description	: Jan. :	Feb. :	Mar. :	Apr. :	May :	June :	July :	Aug. :	Sept. :	Oct. :	Nov. :	Dec.
	Dollars per unit											
Beans, Green--Continued												
Bushel basket, hamper or crate												
Round Green type												
Chicago												
Florida	22.87	32.75	23.30	15.75	13.75	-	-	-	-	15.00	13.25	16.80
Illinois	-	-	-	-	-	11.00	11.25	12.87	9.50	12.16	-	-
Tennessee	-	-	-	-	-	-	11.50	-	-	10.00	-	-
North Carolina	-	-	-	-	-	-	9.75	-	-	12.00	-	-
Georgia	-	-	-	-	12.00	10.37	-	-	-	-	-	-
Beets												
New York												
N.J., 4/5 bu. crate 12 bunches	-	-	-	-	-	4.90	4.50	4.00	4.58	5.83	5.25	-
Texas, 1-2/5 bushel crate 24-bunches	8.66	9.25	9.25	9.66	-	-	-	-	-	-	8.50	8.50
Chicago												
Ill., crate & carton 12-bunches	-	-	-	-	-	6.50	5.87	6.00	6.00	6.00	6.25	-
Texas, 1-2/5 bu. crate & carton 24-bunches	6.93	8.08	8.43	8.93	12.00	-	-	-	-	-	-	8.50
Broccoli												
Carton, 14 bunches												
New York												
California	8.62	11.87	10.35	9.75	9.75	10.50	11.50	9.62	10.25	10.37	9.37	10.00
Chicago												
California	9.18	10.25	10.55	9.37	9.56	10.37	10.12	9.37	9.95	10.00	9.56	10.37
Brussel Sprouts												
New York												
California repacked locally 10-oz. cup	.75	.75	.75	.77	.71	-	-	-	.85	.65	.63	.72
N.Y.L.I. 10-oz. cup	-	-	-	-	-	-	-	-	-	.59	.50	.55
Chicago												
California 25-lb. carton 10-oz. cup	10.75	-	-	14.50	-	-	-	-	12.50	10.25	10.00	10.00
	.63	.65	.65	.70	-	-	-	-	.75	.66	.65	.60
Cabbage												
New York												
Danish type												
N.Y. 50-lb. sack	5.37	5.19	5.06	5.13	6.42	-	-	-	-	3.25	3.40	3.85
Green 1-3/4 bushel crate & carton	-	-	-	-	-	-	-	-	-	-	-	-
Florida	7.56	6.25	5.60	5.32	5.50	-	-	-	-	-	-	6.16
North Carolina	-	-	-	5.50	4.42	-	-	-	-	-	-	-
N.Y.L.I.	-	-	-	-	-	-	-	-	-	-	4.00	4.85
New Jersey	-	-	-	-	-	3.38	3.12	3.06	3.65	4.18	3.75	-
Chicago												
Danish type												
Wisc. 50-lb. sack	-	-	-	-	-	-	-	-	3.16	3.37	3.83	4.00
Green 1-3/4 bushel crate	-	-	-	-	-	-	-	-	-	-	-	-
Florida	8.00	-	-	-	-	-	-	-	-	-	-	5.37
Texas	7.25	5.62	5.50	5.87	6.18	5.75	-	-	-	-	6.25	5.81
Wisconsin	-	-	-	-	-	-	3.50	3.15	3.25	4.12	5.16	-
Indiana	-	-	-	-	-	5.12	3.41	3.00	-	3.00	4.75	-
Illinois	-	-	-	-	-	4.66	3.50	3.17	3.50	3.50	-	-

Table 2. --Continued

VEGETABLES--CONTINUED

Market, origin and Description	Jan.	Feb.	Mar.	Apr.	May	June	July	Aug.	Sept.	Oct.	Nov.	Dec.
	Dollars per unit											
Carrots												
New York												
48-1-lb. film bags in sacks												
Canada	9.00	-	-	-	-	-	10.00	7.18	5.68	6.62	7.60	7.93
California	11.43	10.31	9.41	8.75	10.25	9.55	12.18	10.25	10.30	7.12	11.37	11.90
Texas	-	8.44	7.66	7.25	-	-	-	-	-	8.00	10.00	10.00
Michigan	-	-	-	-	-	-	-	-	-	-	10.00	10.00
Florida	8.56	8.83	8.00	7.50	8.87	7.75	-	-	-	-	-	9.08
50-lb. sack loose large												
Canada	7.31	8.50	-	-	-	-	-	8.33	7.75	6.00	6.50	6.43
California	9.00	8.56	8.91	7.50	10.00	13.10	13.25	10.12	10.50	10.12	8.37	8.45
Michigan	-	-	-	-	-	-	-	-	-	-	7.50	-
Texas	7.68	7.69	7.50	6.87	11.00	-	-	-	7.25	5.25	7.00	7.25
Florida	7.25	-	-	6.75	10.87	-	-	-	-	-	6.75	-
Chicago												
48-1-lb. film bags in sacks												
Arizona	-	-	-	9.50	11.75	-	-	-	-	-	-	-
Canada	9.00	9.00	-	-	-	-	-	-	-	-	-	-
California	11.25	11.06	10.15	9.50	11.83	11.25	11.06	11.50	10.40	10.18	11.00	11.70
Michigan	-	-	-	-	-	-	-	10.12	8.39	8.75	9.33	-
Texas	10.00	9.62	8.81	7.93	12.00	-	-	-	-	-	10.00	9.75
50-lb. sack loose large												
Arizona	-	-	-	7.00	11.75	-	-	-	-	-	-	-
Canada	8.25	9.00	-	-	-	-	-	-	-	-	-	-
California	9.81	9.56	7.81	7.43	11.25	11.20	11.06	11.18	8.55	7.31	8.37	9.08
Michigan	-	-	-	-	-	-	-	9.58	7.70	7.37	7.50	-
Texas	9.13	9.25	7.60	6.87	-	-	-	-	-	-	7.00	9.00
Cauliflower												
New York												
Calif., carton, film wrpd. 12s	10.37	9.00	15.50	12.75	11.50	12.50	12.75	12.12	10.20	10.87	10.00	10.66
N.Y.L.I., Long Island type crate jacket pack 12s	-	-	-	-	-	-	-	-	-	8.50	7.84	8.50
N.Y. Catskill carton, film wrapped 12s	-	-	-	-	-	-	-	-	-	8.50	6.37	-
Chicago												
Calif., carton film wrpd. 12s	11.25	13.62	12.65	11.50	11.18	12.50	13.25	12.37	9.00	11.93	11.00	12.00
Fla. carton film wrpd. 12s	-	13.25	13.75	12.00	-	-	-	-	-	-	-	17.00
Celery												
Crate 2-3 dozen												
New York												
California	10.87	8.93	9.50	12.91	16.37	15.40	12.87	11.12	11.40	13.50	11.00	11.30
Florida	11.68	7.12	7.00	10.31	13.37	-	-	-	-	-	-	-
Chicago												
California	14.50	9.06	12.67	11.68	15.87	14.60	13.75	12.12	11.70	11.18	11.50	11.40
Florida	-	7.25	13.75	12.37	15.00	15.50	-	-	-	-	11.00	-
Michigan	-	-	-	-	-	-	13.00	10.12	9.25	-	-	-
Corn, Sweet												
Crate, 4-1/2-5 dozen Yellow												
New York												
Florida	10.25	12.50	12.63	9.38	7.44	6.45	9.50	-	-	8.67	7.25	8.31
New Jersey	-	-	-	-	-	-	6.62	5.50	-	-	-	-
Chicago												
Florida	10.62	12.00	13.37	10.00	8.81	7.30	9.00	-	10.50	9.87	8.50	9.18
Illinois	-	-	-	-	-	-	6.81	5.31	4.87	-	-	-

Table 2. --Continued

VEGETABLES--CONTINUED

Market, origin and Description	: Jan. :	Feb. :	Mar. :	Apr. :	May :	June :	July :	Aug. :	Sept. :	Oct. :	Nov. :	Dec.
	Dollars per unit											
Cucumbers												
Bushel carton & 1-1/9 bu. crt & ctn.												
New York												
Florida	14.75	-	-	15.00	13.37	10.50	10.00	-	-	10.67	11.13	11.25
New Jersey	-	-	-	-	-	-	7.00	6.16	10.00	-	-	-
North Carolina	-	-	-	-	-	9.50	-	-	-	-	-	-
Mexico	15.00	17.00	20.50	12.50	-	-	-	-	-	-	-	13.90
South Carolina	-	-	-	-	-	9.50	-	-	-	-	-	-
Virginia	-	-	-	-	-	-	-	-	10.50	10.50	-	-
Chicago												
Florida	-	-	-	16.66	15.62	9.50	12.00	10.75	-	-	-	11.69
Illinois	-	-	-	-	-	19.50	11.50	7.44	9.60	11.00	-	-
Michigan	-	-	-	-	-	21.50	10.81	7.31	-	-	-	-
North Carolina	-	-	-	-	-	19.00	11.67	-	-	12.17	-	-
Texas	-	-	-	-	13.00	10.50	-	-	-	12.25	10.50	11.00
Mexico	15.50	17.25	16.20	14.75	-	-	-	-	-	8.50	11.83	11.75
Eggplants												
Bushel carton & 1-1/9 bu. crt & ctn.												
New York												
Florida	10.25	11.16	-	7.25	10.25	7.40	10.25	-	-	8.25	7.62	7.00
New Jersey	-	-	-	-	-	-	9.50	4.50	4.45	5.50	-	-
Mexico, bu. crt. 18-24s	10.66	11.12	12.90	7.67	9.50	8.00	-	-	-	-	-	8.50
Chicago												
Florida	12.31	12.08	14.00	10.33	12.25	9.25	-	-	-	9.13	9.88	10.00
Illinois	-	-	-	-	-	-	11.13	7.00	5.93	5.25	-	-
Mexico, bu. crt. 24s	11.50	12.00	12.40	10.75	-	-	-	-	-	-	-	-
Endive												
1-1/9 bu. crt. & ctn.												
New York												
Florida	6.25	5.62	4.90	4.37	5.68	-	-	-	-	-	5.87	12.10
New Jersey	-	-	-	-	-	5.05	6.93	5.75	4.81	4.75	-	-
N.Y.L.I.	-	-	-	-	-	6.00	-	-	-	-	3.88	-
Chicago												
Florida	6.50	6.69	6.00	5.50	6.56	6.83	-	-	-	-	-	13.25
Ohio 24 qt. basket	-	-	-	-	-	4.00	4.38	6.00	4.67	4.00	-	-
California large carton 24s	8.50	9.00	8.50	8.00	9.50	11.50	11.75	12.00	12.50	10.00	9.88	14.50
Escarole												
1-1/9 bu. crt. & ctn.												
New York												
Florida	7.00	5.62	4.90	4.37	5.81	-	-	-	-	-	5.37	11.10
New Jersey	-	-	-	-	-	5.15	6.93	5.25	4.70	4.56	4.80	-
Chicago												
Florida	7.00	6.50	5.90	5.50	6.38	6.88	-	-	-	-	-	9.13
Ohio, 24qt. basket	-	-	-	-	-	4.00	4.38	5.88	4.67	4.00	-	-
California, large ctn. 24s	8.42	9.00	8.00	7.75	9.00	11.00	9.83	11.83	11.33	11.77	10.00	15.75
Kale												
1-3/5 bushel crate												
New York												
Florida	8.00	7.00	6.43	7.00	-	-	-	-	-	-	-	6.33
New Jersey	-	-	-	4.00	-	5.00	4.25	4.50	-	-	4.18	5.00
Georgia	7.50	7.25	6.70	7.00	6.50	-	-	-	-	-	5.00	6.25

Table 2. --Continued

VEGETABLES--CONTINUED

Market, origin and Description	Jan.	Feb.	Mar.	Apr.	May	June	July	Aug.	Sept.	Oct.	Nov.	Dec.
	Dollars per unit											
Lettuce												
New York												
Iceberg type, carton												
Arizona	8.18	8.25	9.33	7.92	-	-	-	-	-	-	8.81	15.10
California	8.06	7.76	8.65	7.88	10.81	9.15	12.25	12.25	10.25	8.87	9.25	12.60
Colorado	-	-	-	-	-	-	11.50	9.50	10.00	-	-	-
Florida	6.00	-	6.50	5.25	-	-	-	-	-	-	-	-
New Jersey	-	-	-	-	-	4.50	-	-	-	8.00	4.87	-
N.Y. Orange County	-	-	-	-	-	4.75	-	-	-	-	-	-
Big Boston type carton & crate 24's												
Florida	6.56	6.25	7.70	7.93	7.00	-	-	-	-	-	11.00	13.60
New Jersey	-	-	-	-	10.00	5.05	7.33	8.75	8.33	6.12	7.50	-
Romaine type												
1-1/9 bushel crate & carton												
Florida	4.87	5.18	4.95	5.56	4.16	-	-	-	-	-	7.75	16.10
New Jersey	-	-	-	-	4.50	4.60	5.33	5.00	6.45	6.12	6.16	4.50
Chicago												
Iceberg type carton 24's												
California	7.44	7.94	8.45	7.50	10.10	8.45	12.25	11.50	10.30	8.31	8.06	14.90
Arizona	7.58	8.17	8.65	7.44	-	-	-	-	-	-	7.75	13.50
Texas	6.00	-	-	-	-	-	-	-	-	-	-	-
Big Boston type carton 24's												
California	7.25	7.62	8.00	7.83	8.75	8.66	10.91	12.00	12.50	9.33	9.50	15.00
Romaine type												
California, large carton 24's	8.50	8.33	7.87	8.50	9.00	9.06	9.16	8.00	11.16	10.58	10.00	17.80
Mushrooms												
New York												
Medium-large												
Pk., 4-quart basket	4.12	3.93	4.20	4.31	4.33	4.30	4.62	4.56	4.30	4.06	4.56	3.45
Chicago												
Illinois												
Medium large 1-lb. package	1.45	1.45	1.45	1.45	1.45	1.45	1.45	1.45	1.45	1.45	1.45	1.45
Onions, Dry												
50-lb. sack U.S. No. 1 or Generally good quality												
New York												
Calif., Stockton, Yellow												
Jumbo	-	-	-	-	-	14.63	12.63	11.50	-	-	-	-
Repacker	-	-	-	-	-	11.25	12.75	11.16	-	-	-	-
Ida-Oreg., Yellow Spanish												
Jumbo	11.13	11.56	16.20	18.00	-	-	-	9.50	8.30	9.37	11.37	11.55
N.Y. Orange County, Yellow												
Medium	8.31	9.13	9.91	9.50	-	-	-	-	-	6.37	6.50	6.50
Texas, Yellow Granex												
Repacker	-	-	-	11.66	11.93	10.75	12.41	11.12	-	-	-	-
Jumbo	-	-	-	18.66	14.00	15.00	-	-	-	-	-	-
Yellow Grano												
Jumbo	-	-	-	20.16	14.50	14.63	12.75	11.00	-	-	-	-
Repacker	-	-	-	-	11.50	11.50	12.25	-	-	-	-	-
Chicago												
California, Grano-Jumbo												
Grano-Jumbo	-	-	-	-	17.13	14.17	12.50	11.58	7.25	-	-	-
Ida-Org. Yellow Spanish												
Jumbo	10.94	11.00	17.25	15.50	-	-	-	9.13	8.25	9.09	11.25	11.05
Texas, Yellow Granex												
Jumbo	-	-	-	18.00	15.50	-	-	-	-	-	-	-
Repacker	-	-	-	12.25	12.50	10.50	-	-	-	-	-	-
Yellow Grano												
Jumbo	-	-	-	20.50	15.38	14.50	13.50	11.06	-	-	-	-
Repacker	-	-	-	12.50	12.08	11.16	11.75	-	-	-	-	-
Michigan, Yellow medium	8.31	9.44	11.35	-	-	-	-	9.25	6.95	6.28	6.25	6.21
Mexico, Yellow Grano, Jumbo	-	-	18.63	19.00	17.00	-	-	-	-	-	-	-

Table 2. --Continued

VEGETABLES--CONTINUED

Market, origin and Description	Jan.	Feb.	Mar.	Apr.	May	June	July	Aug.	Sept.	Oct.	Nov.	Dec.
	Dollars per unit											
Onions, Green												
New York												
Carton bunched 48s												
Arizona	6.00	6.31	6.70	6.19	6.38	7.25	8.83	9.37	9.50	8.00	11.50	9.60
California	7.50	7.68	7.75	7.58	8.06	8.40	9.43	9.93	10.20	8.93	10.50	9.60
N.J. 4/5 bu. crts. 36 bunches	-	-	-	4.50	5.94	6.10	6.43	6.12	8.05	6.16	5.00	-
Chicago												
Carton bunched 48s												
Arizona	5.50	7.19	7.19	7.19	7.31	8.62	-	-	-	-	9.17	9.90
California	7.88	7.69	7.30	7.63	7.50	8.50	8.81	9.00	9.75	10.31	9.88	10.50
Mexico	7.06	7.38	7.13	7.42	7.50	8.00	-	-	-	-	9.63	9.67
Illinois 24 bunches	-	-	-	-	5.42	6.06	7.81	8.00	8.35	8.13	8.25	-
Peas, Green												
Bushel basket, crate or carton												
New York												
California	-	-	-	9.50	9.75	7.12	8.00	-	-	19.50	-	17.00
Mexico	16.33	23.37	19.25	16.50	14.50	-	-	-	-	-	-	23.00
Chicago												
California	-	-	-	18.00	13.50	-	-	-	-	-	-	-
Mexico	16.00	20.00	20.00	17.25	-	-	-	-	-	-	-	-
Pepper, Green												
Bushel carton and 1-1/9 bushel crate & carton												
Calif. wonder type large												
New York												
California	-	-	-	-	-	-	-	-	7.87	10.25	14.50	-
Florida	12.87	27.00	27.00	14.25	9.00	10.00	-	-	-	-	11.00	10.90
Mexico	12.33	29.00	38.50	-	-	-	-	-	-	-	-	10.75
North Carolina	-	-	-	-	-	16.75	10.50	-	-	-	-	-
New Jersey	-	-	-	-	-	-	10.50	6.56	6.16	6.00	-	-
Texas	-	-	-	-	-	-	-	-	-	-	8.50	9.50
Chicago												
California	-	-	-	-	9.75	13.83	15.38	9.00	8.92	11.50	13.50	-
Florida	16.13	21.67	30.00	18.17	11.13	10.25	-	-	-	-	12.69	13.05
Illinois	-	-	-	-	-	-	11.50	8.63	7.55	6.00	-	-
Louisiana	-	-	-	-	-	14.75	18.00	-	-	-	-	-
Mexico	15.88	27.13	34.33	25.50	-	-	-	-	-	-	-	14.62
North Carolina	-	-	-	-	-	16.00	13.33	-	-	-	-	-
Texas	-	-	-	-	-	-	-	-	-	9.38	11.25	12.35
Potatoes												
New York												
U.S.No.1, Size A												
50-lb. sack washed												
Ala., Round Red	-	-	-	-	-	9.63	8.81	-	-	-	-	-
Fla. Round Red	-	12.33	16.83	12.78	9.88	-	-	-	-	-	-	-
Minn-N.D. Round Red	8.50	10.06	10.33	10.50	11.00	10.12	-	7.87	7.00	6.81	6.75	6.75
Calif., Long White												
50-lb. carton	13.00	14.25	17.66	11.50	10.50	9.17	9.75	11.93	11.62	-	14.00	13.62
Idaho, Russet Burbank												
50-lb. carton 80-90s	14.93	14.00	13.30	12.78	13.63	17.20	-	-	13.50	11.50	11.37	11.25
Wash., Norgold												
50-lb. carton 80-100s	-	-	-	-	-	-	-	12.06	12.06	-	-	-
Va., Round White	-	-	-	-	-	6.25	8.53	4.50	-	-	-	-
N.Y.L.I., Round White												
2" min	6.71	6.66	6.63	6.78	-	-	-	-	-	4.00	4.05	4.15
Maine Katahdin type unwashed	6.68	6.75	6.93	7.14	7.28	7.88	-	-	-	4.00	4.15	4.01
Canada Prince Edward Island												
Round White-Canada No. 1												
2-1/4" min.	7.21	6.93	7.36	7.92	8.16	-	-	-	5.00	4.70	4.39	4.40

Table 2. --Continued

VEGETABLES--CONTINUED

Market, origin and Description	Jan.	Feb.	Mar.	Apr.	May	June	July	Aug.	Sept.	Oct.	Nov.	Dec.
	Dollars per unit											
Potatoes--Continued												
Chicago												
U.S. No. 1 Size A, 100-lb. sack washed	-	-	-	-	-	-	6.75	-	-	-	-	-
Ala., Round Red 50-lb. sack	-	-	-	-	-	-	-	-	-	-	-	-
Fla., Round Red 50-lb. sack	-	-	-	-	-	-	-	-	-	-	-	-
Size A	-	14.50	16.13	13.88	10.56	-	-	-	-	-	-	-
Size B	-	13.75	15.08	12.88	10.50	-	-	-	-	-	-	-
Minn.-N.D., Round Red	14.56	17.50	17.55	17.56	17.06	17.50	15.00	11.29	10.05	9.88	9.56	9.50
Calif., Long White	-	-	-	-	16.87	17.19	17.25	-	-	-	-	-
Idaho, Russet Burbanks	-	-	-	-	-	-	-	-	-	-	-	-
50-lb. carton 80-100s	13.81	14.38	13.50	12.69	13.31	16.05	16.00	13.63	12.00	10.69	10.75	10.47
Wisconsin, Russet	-	-	-	-	-	-	-	-	-	-	-	-
50-lb. carton 80-90s	12.25	11.81	11.50	10.75	-	-	-	-	-	-	8.00	8.08
Round White	12.75	14.63	14.90	15.75	-	-	-	9.00	7.95	8.13	8.56	8.22
Radishes												
Carton, 30-6 oz. film bags, topped red												
New York												
Florida	2.83	2.83	4.15	3.43	3.62	3.85	-	-	-	3.75	5.43	5.40
Ohio	-	-	-	-	3.75	3.43	4.68	3.50	4.15	5.33	-	-
Chicago												
Florida	3.19	3.19	4.25	3.74	3.78	3.46	-	-	-	3.75	5.38	5.13
Michigan	-	-	-	-	-	3.50	3.79	3.50	3.04	-	-	-
Ohio	-	-	-	-	-	3.85	3.86	3.54	4.16	4.08	-	-
Rhubarb												
Carton												
New York												
Michigan 5-lb. Extra Fancy	-	-	-	-	-	-	-	-	-	-	-	-
Special long	3.50	3.03	3.62	3.24	3.25	-	-	-	-	-	-	-
Washington, 20-lb. carton	-	-	-	10.00	-	-	-	-	-	-	-	-
Oregon, 20-lb. lug	-	-	-	8.25	-	-	-	-	-	-	-	-
Spinach												
Bushel basket or crate, Savoy type												
New York												
Colorado	-	-	-	-	-	9.50	10.50	16.12	10.25	-	-	-
New Jersey	-	-	-	5.42	4.62	5.58	6.50	10.16	10.75	6.50	8.00	9.00
Texas	8.75	8.50	8.40	8.50	-	-	-	-	-	-	-	9.40
N.Y.L.I.	-	-	-	-	-	9.50	-	-	-	-	-	-
Chicago												
Illinois	-	-	-	5.87	6.87	6.08	8.62	9.00	11.50	7.31	6.60	7.25
Texas	7.50	7.50	7.75	7.00	-	-	-	-	-	-	-	8.45
California-flat leaf	7.56	7.75	8.08	9.37	11.33	9.83	12.62	12.80	11.87	13.66	10.25	10.75
Squash												
New York												
Zucchini-small 1/2 bu. bkts. & 5/9 bu. crts. & ctns.												
Florida	15.00	15.50	17.62	7.00	7.00	-	-	-	-	-	11.12	10.00
North Carolina	-	-	-	-	5.50	5.33	-	-	-	-	-	-
New Jersey	-	-	-	-	-	5.62	5.12	6.50	7.00	7.37	-	-
Mexico lug	17.62	15.62	22.20	10.00	-	-	-	-	-	-	-	9.00
Yellow Straightneck 1/2 bu. bkts. & ctns. 5/9 bu. crts. & ctns. small												
Florida	13.60	20.33	19.16	7.62	8.50	-	-	-	-	9.50	11.75	9.50
Mexico lug	14.25	24.00	25.00	-	-	-	-	-	-	-	-	15.50
North Carolina	-	-	-	-	5.50	5.33	-	-	-	-	-	-
New Jersey	-	-	-	-	-	6.50	5.66	8.12	9.00	-	-	-
Acorn 1-1/9 bu. crts. & ctns.												
Florida	13.33	17.50	22.25	14.87	9.00	6.50	-	-	-	-	10.50	15.00
North Carolina	-	-	-	-	-	8.00	-	-	-	-	-	-
New Jersey	-	-	-	-	-	-	7.50	7.87	6.30	6.50	6.50	-
Butternut-1-1/9 bu. crt. & ctns.												
New Jersey	6.87	6.94	6.66	7.91	-	-	10.25	7.62	6.40	6.16	6.00	6.18

Table 2. --Continued

VEGETABLES--CONTINUED

Market, origin and Description	Jan.	Feb.	Mar.	Apr.	May	June	July	Aug.	Sept.	Oct.	Nov.	Dec.
Dollars per unit												
Squash Continued												
Chicago												
Zucchini small 1/2 bu. bkts & ctn 5/9 bu crts. & ctns.												
Florida	-	11.50	15.10	7.75	8.00	5.00	-	-	-	7.00	11.37	12.62
Mexico lugs	22.50	16.62	21.37	9.50	-	-	-	-	-	-	-	13.37
Illinois, 10-lb. bkts.	-	-	-	-	3.00	3.65	3.68	2.93	2.97	4.52	-	-
Yellow Straightneck small-medium												
Florida	13.00	-	16.83	8.56	6.75	5.00	-	-	-	-	-	14.75
Illinois 10-lb. bkts. & ctns.	-	-	-	-	4.00	3.80	3.06	3.00	3.70	4.25	-	-
Acorn-1-1/9 bu. crts. medium												
Florida	12.50	-	-	10.50	9.66	9.50	-	-	-	-	-	12.83
Mexico	-	-	23.60	17.66	-	-	-	-	-	-	-	-
Illinois	-	-	-	-	-	-	-	7.31	5.00	3.75	4.08	-
Butternut-1-1/9 bu. crt. medium												
Illinois	-	-	-	-	-	-	-	7.43	5.50	4.75	4.43	5.50
Florida	11.50	-	-	-	-	-	-	-	-	-	-	-
Michigan	-	-	-	-	-	-	-	-	-	-	5.31	6.37
Sweet Potatoes												
50-lb. carton, crate & bushel basket												
New York												
La. Porto Rico type U.S. No.1, cured	-	16.00	17.50	18.50	-	-	-	-	-	13.00	14.50	14.63
uncured	-	-	-	-	-	-	25.25	18.75	13.10	-	-	-
N.C. Jewel type, cured	13.88	14.56	16.90	18.19	18.88	21.88	-	-	-	12.63	13.81	13.50
uncured	-	-	-	-	-	-	23.50	18.63	11.90	-	-	-
Chicago												
La. Porto Rico type U.S. No.1, cured	-	16.00	17.50	18.50	-	-	-	-	-	13.00	14.50	14.63
uncured	-	-	-	-	-	-	25.25	18.75	13.10	-	-	-
Tomatoes												
New York												
Calif., 30-lb. carton Green												
5x6s	-	-	-	-	-	-	14.50	12.00	11.60	13.25	12.00	-
6x6s	-	-	-	-	-	-	13.00	10.81	9.95	11.83	16.25	-
2-layer lug												
4x5-5x6s	-	-	-	-	-	8.87	8.66	5.37	7.62	9.50	5.68	6.62
Fla., 30-lb. carton Green												
5x6s	16.63	22.88	34.63	18.12	8.63	11.00	-	-	-	-	10.12	11.20
6x6s	16.25	21.50	32.38	16.13	7.13	9.75	-	-	-	-	9.00	9.00
N.J., 30-lb. carton Green												
5x6s	-	-	-	-	-	-	11.75	8.18	12.50	-	-	-
S.C., 30-lb. carton Green												
5x6s	-	-	-	-	-	11.25	10.62	10.50	-	-	-	-
6x6s	-	-	-	-	-	9.38	9.50	8.50	-	-	-	-
Mexico 2-layer flat, 20-lb. carton pink 4x5-5x6s	14.62	20.15	20.75	15.00	-	-	-	-	-	-	-	-
Ohio, 8-lb. bkt. greenhouse, Pink large	-	-	10.25	7.56	5.00	5.91	-	-	-	6.93	5.50	5.50
Cherry type 12 pint tray												
Mexico	13.75	10.25	16.00	10.50	13.25	7.75	-	-	10.00	8.62	11.05	11.00
California	-	-	-	-	-	9.13	8.50	10.00	7.37	8.50	-	-
Florida	-	-	-	6.50	8.00	6.62	8.00	-	-	9.33	7.50	10.00

Table 2. --Continued

VEGETABLES--CONTINUED

Market, origin and Description	: Jan.	: Feb.	: Mar.	: Apr.	: May	: June	: July	: Aug.	: Sept.	: Oct.	: Nov.	: Dec.
Dollars per unit												
Tomatoes--Continued												
Chicago												
Calif., 30-lb. carton Green 5x6s	-	-	-	-	-	-	12.83	9.68	10.20	10.86	8.50	-
2-layer lug turning 4x5-5x6s	-	-	-	-	-	-	8.67	6.13	7.92	8.06	5.83	6.88
Fla. 30-lb. carton Green 5x6s	15.38	20.83	-	18.13	8.50	10.13	-	-	-	11.50	9.50	10.05
20-lb. carton turning 5x6s	-	-	-	-	-	-	-	-	-	-	6.50	7.50
Ill., 10-lb. basket Pink medium large	-	-	-	-	-	-	4.19	2.83	-	-	-	-
Mich., 10-lb. basket Pink medium large	-	-	-	-	-	-	5.25	3.25	3.25	3.25	-	-
Mexico, 2-layer flat turning 4x5-5x6s	15.00	13.88	18.70	12.50	-	-	-	-	-	-	-	-
Ill., 8-lb. basket, greenhouse U.S. No.1, Pink medium	-	-	-	6.41	2.90	3.10	3.44	-	-	4.87	3.00	2.88
Cherry type 12 pint trays												
California	-	-	-	-	-	7.75	7.00	7.00	6.35	9.44	6.83	10.00
Michigan	-	-	-	-	-	-	6.13	6.44	5.75	7.50	-	-
Mexico	9.50	9.50	15.90	9.88	11.50	8.80	7.33	7.31	-	8.50	5.50	11.06
Florida	8.50	-	-	-	9.50	-	-	-	-	8.25	-	-

U.S. GOVERNMENT PRINTING OFFICE: 1982-360-929:AMS-655

END