



AgEcon SEARCH
RESEARCH IN AGRICULTURAL & APPLIED ECONOMICS

The World's Largest Open Access Agricultural & Applied Economics Digital Library

This document is discoverable and free to researchers across the globe due to the work of AgEcon Search.

Help ensure our sustainability.

Give to AgEcon Search

AgEcon Search

<http://ageconsearch.umn.edu>

aesearch@umn.edu

*Papers downloaded from **AgEcon Search** may be used for non-commercial purposes and personal study only. No other use, including posting to another Internet site, is permitted without permission from the copyright owner (not AgEcon Search), or as allowed under the provisions of Fair Use, U.S. Copyright Act, Title 17 U.S.C.*

SB 619 (1979)

USDA STATISTICAL BULLETINS

UPDATA

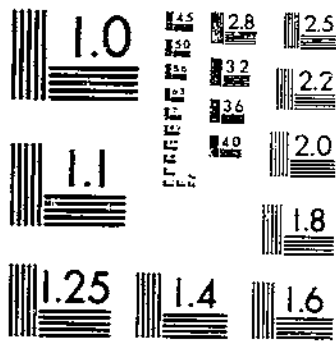
INDICES OF AGRICULTURAL PRODUCTION FOR ASIA AND OCEANIA

1961-65

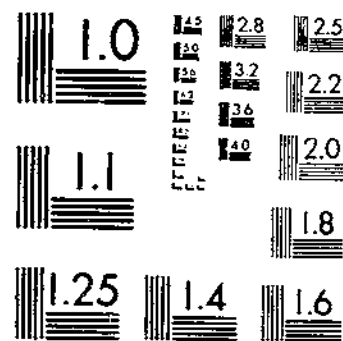
1969-78

1 OF 1

START



MICROCOPY RESOLUTION TEST CHART
NATIONAL BUREAU OF STANDARDS-1963-A



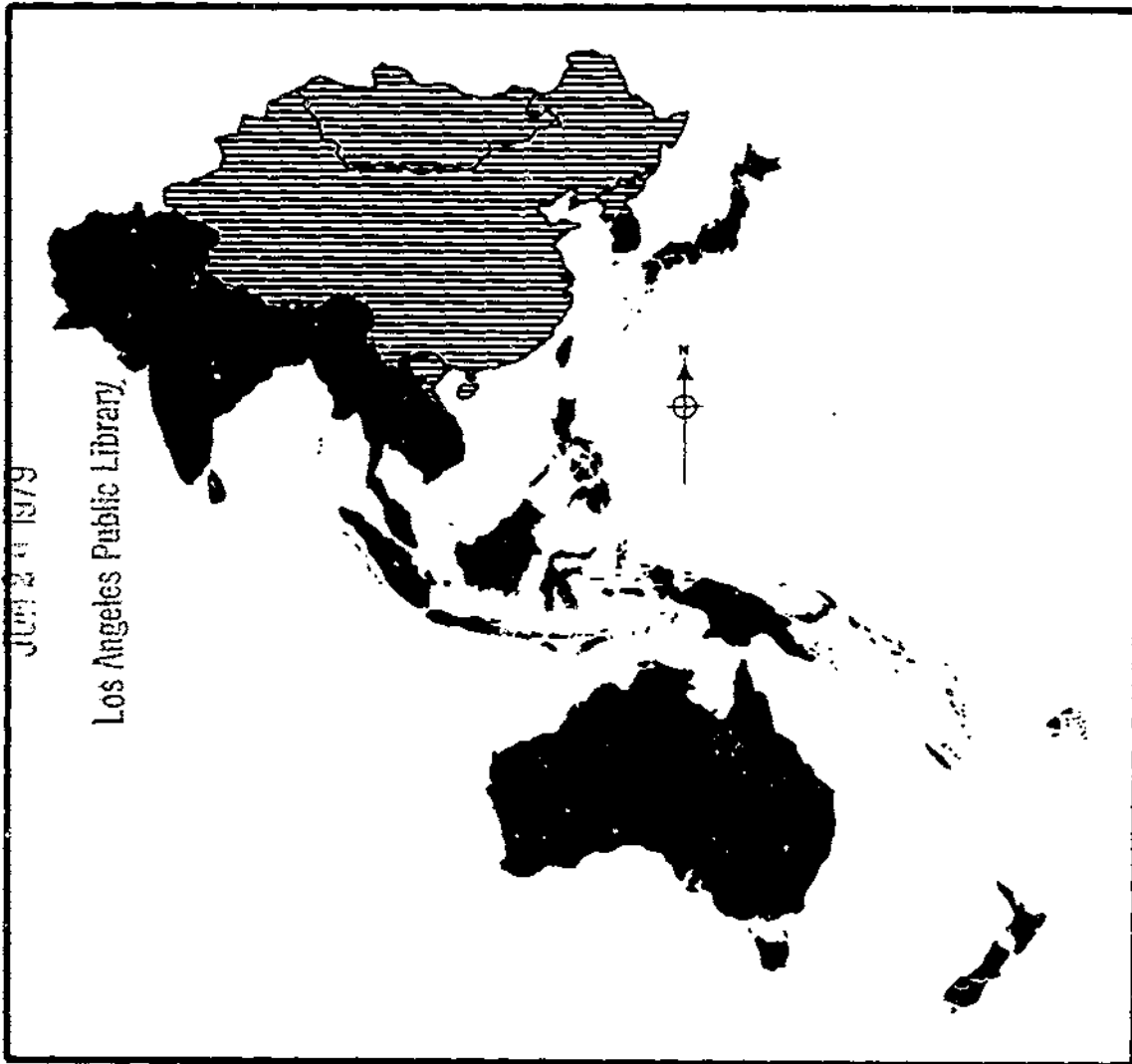
MICROCOPY RESOLUTION TEST CHART
NATIONAL BUREAU OF STANDARDS-1963-A

R
630.5
a 53.13

37

STATISTICAL BULLETIN NO. 619

Indices of Agricultural Production for Asia and Oceania, Average 1961-65 and Annual 1969-78



U. S. DEPOSITORY.

JUN 24 1979

Los Angeles Public Library

ECONOMICS, STATISTICS, and COOPERATIVES SERVICE
UNITED STATES DEPARTMENT OF AGRICULTURE

CONTENTS

	<u>Page</u>
Introduction	1
 <u>Table</u>	
<u>Summary tables</u>	
1 South and East Asia and Oceania: Midyear population by country 1969-78.	3
2 South and East Asia: Agricultural production for selected years . .	4
3 Oceania: Agricultural production for selected years	6
4 South and East Asia and Oceania: Indices of total agricultural production, by country, 1969-78.	7
5 South and East Asia and Oceania: Indices of per capita agricultural production, by country, 1969-78.	8
6 South and East Asia and Oceania: Indices of total food production by country, 1969-78.	9
7 South and East Asia and Oceania: Indices of per capita food production, by country, 1969-78.	10
8 South and East Asia and Oceania: Aggregates of total agricultural production, by country, average 1961-65, annual 1969-78	11
9 South and East Asia and Oceania: Aggregates of total food production, by country, average 1961-65, annual 1969-78.	12
 <u>Country tables: Production by commodity, value, and indices of total agricultural and food products, average 1961-65, annual 1969-78.</u>	
10 Australia.	13
11 Bangladesh	14
12 Burma.	15
13 India.	16
14 Indonesia.	17
15 Japan.	18
16 Korea, Republic of	19
17 Malaysia, West	20
18 New Zealand.	21
19 Pakistan	22
20 Philippines.	23
21 Sri Lanka.	24
22 Taiwan	25
23 Thailand	26



INDICES OF AGRICULTURAL PRODUCTION FOR ASIA AND OCEANIA,
AVERAGE 1961-65 AND ANNUAL 1969-78

Asia Branch
International Economics Division
Economics, Statistics, and Cooperatives Service

INTRODUCTION

Indices of agricultural production in foreign countries have been prepared since World War II as part of a continuing assessment of the current agricultural situation abroad. During and immediately after the war the effort focused on Europe. Since the mid-1950's, special attention has been given to the less developed countries because of an arrangement with the Agency for International Development, whereby the Department of Agriculture prepares annual reports on the volume of agricultural production in most countries that are aid recipients.

The indices presented on the following pages are constructed from production series given in metric tons, extending from 1969 through 1978, inclusive. To the extent possible, commodities were combined on a calendar year basis. Calendar year production includes crops harvested during the spring, summer, and autumn of 1969 (for example) and includes some crops such as rice, where the bulk of the crop is harvested in 1969, but continued into the early part of 1970. The base period is the average of the calendar years 1961-65. The indices in this report supersede those published in the June 1978 Indices of Agricultural Production for Asia and Oceania, Statistical Bulletin No. 606 and all previous editions.

The reader is cautioned against using the products listed by each country as its total food supply. The list does not include all food or fiber grown in the country. Also, output of some crops and products is exported and not available for domestic use.

Country Indices. Country indices are calculated with Laspeyres' base-weighted aggregate formula. Estimated base-period average prices received by farmers, expressed in U.S. dollars per metric ton, are used for weighting. When farm prices are not available it is necessary to use wholesale or export prices, adjusting to make them comparable to farm level.

Sources of Data. These indices are based on statistics of widely differing reliability. For most commodities, forecasts of production in the current year are published by the Foreign Agricultural Service. These forecasts cover the major producing countries and are subsequently revised by the governments concerned or by USDA. For other commodities (e.g., millet, sorghum, bananas, and cassava), FAS does not publish production statistics and ESCS must rely on other sources, such as FAO and foreign governments, for historical data and on estimates, based largely on trends, for the current year. Statistics of livestock products are generally less reliable than figures for output of the principal commercial crops. All production figures are based on the latest information available to this office as of the end of March 1979.

Regional Indices. Indices of agricultural production are computed for three regions: South Asia, East Asia, and Oceania, and totals for each region are included in the tables. Several smaller countries are omitted from the calculations for lack of data. The formula for the regional indices is a weighted-aggregative type, the regional aggregates being the sums of the country aggregates. This method is biased in favor of countries with relatively comprehensive commodity coverage or relatively high price weights, but the bias is not serious enough to offset the advantage of great flexibility in the grouping of countries into various alternative regions and sub-regions.

Commodity Coverage. In the country indices all major cash crops and subsistence crops are included if current production estimates are available. Hay and other crops grown for feeding on the farm are omitted. Output of milk, eggs, poultry meat, wool, honey, and fur skins, if significant, is included to the extent permitted by the quality of the data. Production of meat animals is represented for most countries by estimates of meat production.

Commodity Prices. Prices of agricultural commodities are generally reported in local currencies. Converting to U.S. dollars poses a problem. The currencies of many less developed countries are overvalued in varying degrees in the base-period years 1961-65. To convert with exchange rates at par value would give an unrealistic schedule of prices in U.S. dollars. Prices would be too high in proportion to the extent of currency depreciation. This would not affect the computation of an index for a given country, but it would cause difficulty when combining production

of several countries to obtain a regional index. Thus, conversion of prices to U.S. dollars, using free market exchange rates rather than official rates, offers a more standard basis for regional analysis. For this reason, prices in countries included in this publication are converted to U.S. dollars using free market rates reported in Hong Kong. The exchange rates employed are gathered on a monthly basis and averaged over the 5-year 1961-65 base period.

Feed Deduction. For Australia and Japan, the indices of agricultural production regard agriculture as consisting essentially of two farms: one which produces only crops and no livestock; and one which produces livestock products from pasture and forage, together with feed either produced domestically or imported. Aggregates are shown separately for crops and livestock, referring to the gross output of these two farms. When these two aggregates are combined, a deduction is made for livestock feed to avoid double counting of feed and the livestock products produced from it. This deduction is a fixed percentage of the livestock aggregates and represents the feed purchased by the national livestock farm.

The fixed percentage deduction for feed was derived by dividing the feed bill for the base period (1961-65) by the gross value of livestock output in the same years. The feed bill for the base period was calculated by applying to the grains, potatoes, and other crops fed, the prices received by farmers, with no markup for transportation or compounding. In the case of byproduct feeds, such as bran, oilcake, molasses, and brewers' grains, estimates of prices paid by farmers were used.

Food Production Indices. Index numbers of food production are computed for all countries and all regions. They are derived from the index numbers of agricultural production and differ only by the exclusion of inedible commodities and of coffee, tea, and spices.

COMMODITIES CLASSIFIED AS FOOD

Cereals

Rice, paddy
Wheat
Millet and sorghum
Barley
Corn
Other grains

Vegetables and Tubers

White potatoes
Sweet potatoes
Cassava
Onions
Chillies
Other vegetables

Fruits

Bananas
Pineapple
Citrus
Grapes
Apples
Pears
Other fruit

Oilseeds and Oils

Copra
Peanuts
Cottonseed
Rape and mustard seed
Soybeans
Sesame
Palm oil
Palm kernel

Livestock Products

Milk
Eggs
Meat

Sugar
Sugarcane
Sugar beets
Honey

Fulses

Chickpeas
Pigeon peas
Other pulses

Other
Cocoa

TABLE 1--SOUTH AND EAST ASIA AND OCEANIA

COUNTRY AND REGION	MID-YEAR POPULATION BY COUNTRY, 1969-78										Growth Rate ^{1/} Percent
	1969	1970	1971	1972	1973	1974	1975	1976	1977	1978	
	----- THOUSANDS -----										
BANGLADESH	68,170	69,920	71,622	73,057	74,946	76,887	78,963	81,095	83,284	85,294	2.2
SRI LANKA	12,091	12,360	12,635	12,916	13,190	13,456	13,728	14,006	14,289	14,578	1.8
INDIA	537,070	548,520	560,157	572,533	584,614	596,832	609,127	621,370	633,858	646,598	1.8
PAKISTAN	58,909	60,607	62,425	64,298	66,227	68,214	70,260	72,367	74,537	76,773	2.7
SOUTH ASIA	676,240	691,407	706,832	722,804	738,977	755,189	772,078	788,838	805,966	823,243	2.0
BURMA	27,306	27,637	27,900	28,232	29,052	29,749	30,463	31,194	31,890	32,590	1.8
INDONESIA	121,807	124,578	127,349	130,237	133,201	136,259	139,421	142,656	145,937	149,294	2.1
JAPAN	133,170	134,348	135,680	137,170	138,790	140,160	141,560	142,770	143,992	145,220	1.1
KOREA, REPUBLIC OF	31,652	32,394	33,209	33,637	34,276	34,927	35,749	36,557	36,975	37,695	1.7
MALAYSIA, WEST	8,952	9,176	9,405	9,640	9,882	10,121	10,378	10,646	10,921	11,279	2.3
PHILIPPINES	36,450	37,549	38,563	39,604	40,673	41,772	42,801	43,871	44,968	46,092	2.3
TAIWAN (REP. OF CHINA)	14,111	14,524	14,838	15,137	15,431	15,732	16,046	16,357	16,680	17,010	1.8
THAILAND	35,463	36,532	37,701	38,832	39,919	40,952	41,949	42,863	43,806	44,770	2.3
EAST ASIA	378,611	386,730	394,445	402,489	411,134	419,672	428,352	436,714	445,167	453,851	1.8
EAST ASIA LESS JAPAN	275,441	282,390	288,765	296,319	302,434	309,512	316,792	323,944	331,177	338,631	2.1
SOUTH AND EAST ASIA	1,054,851	1,078,137	1,101,277	1,125,293	1,150,111	1,175,061	1,200,430	1,225,552	1,251,135	1,277,094	1.9
SO. AND E. ASIA LESS JAPAN	951,681	973,797	995,597	1,018,123	1,041,411	1,064,901	1,088,870	1,112,782	1,137,145	1,161,874	2.0
AUSTRALIA	12,260	12,510	12,760	12,960	13,130	13,340	13,500	13,640	13,780	13,920	1.2
NEW ZEALAND	2,770	2,810	2,850	2,900	2,950	3,010	3,070	3,140	3,210	3,280	1.7
OCEANIA	15,030	15,320	15,610	15,860	16,080	16,350	16,570	16,780	16,990	17,200	1.3

^{1/} Compound annual rate, 1969-78.

TABLE 2-- SOUTH AND EAST ASIA

AGRICULTURAL PRODUCTION FOR SELECTED YEARS

COMMODITY	AVERAGE	1969	1970	1971	1972	1973	1974	1975	1976	1977	1978
	1961-65										
					- 1,000 METRIC TONS -						
WHEAT	16,950	26,380	28,222	31,098	33,865	32,631	29,898	32,392	36,176	38,863	40,605
RYE	18	13	10	8	8	6	6	9	6	4	4
RICE, PADDY	132,471	156,027	157,797	155,416	147,489	164,787	160,339	178,368	168,162	188,518	192,625
CORN	10,269	12,579	15,215	12,973	12,728	14,336	14,601	17,082	15,598	15,056	15,608
BARLEY	5,263	5,017	5,004	4,914	4,621	4,182	4,148	5,210	5,306	3,504	4,120
OATS	145	67	61	60	57	41	37	28	22	18	26
MILLET	8,321	9,633	12,666	9,621	7,883	12,019	7,408	10,868	10,067	10,192	10,947
BORGHUM	9,139	10,116	8,548	8,183	7,410	9,687	10,964	10,108	11,053	12,319	12,483
OTHER GRAINS	43	28	22	25	29	25	4	4	5	4	2
PULSES	759	773	783	806	993	863	847	862	823	944	962
CHICKPEAS	6,211	4,892	6,115	5,788	5,649	5,150	4,771	4,635	6,519	6,104	6,131
PIGEON PEA	1,666	1,816	1,842	1,883	1,883	1,928	1,834	2,099	1,725	1,888	1,750
OTHER PULSES	4,512	4,293	4,303	4,736	4,330	3,402	4,500	4,165	5,061	4,212	4,459
POTATOES	7,340	8,954	8,190	8,730	9,009	8,410	8,354	10,226	11,718	11,369	11,400
CASSAVA	17,015	19,974	20,276	19,763	20,403	24,825	26,034	24,662	25,323	25,270	27,523
SWEET POTATOES	15,693	14,361	13,531	12,061	11,991	10,935	10,645	11,086	10,327	9,733	10,102
OTHER ROOT CROPS	158	160	143	137	127	125	125	138	150	150	150
SUGARCANE	163,886	194,739	212,757	208,814	186,832	208,561	235,495	233,134	249,954	271,697	287,674
SUGAR BEETS	1,323	2,075	2,324	2,197	2,760	2,951	1,879	1,758	2,169	2,333	2,400
TOBACCO	906	1,054	1,015	1,043	1,105	1,045	1,120	1,056	1,114	1,233	1,237
COTTON	1,455	1,622	1,545	2,059	1,872	1,850	1,853	1,806	1,595	1,776	1,803
JUTE	2,171	2,360	2,179	1,965	2,108	2,295	1,610	1,636	1,893	2,003	2,245
KENAF	303	375	390	370	432	640	400	250	180	270	300
COTTONSEED	2,907	3,244	3,090	4,116	3,725	3,714	3,926	3,299	3,106	3,977	3,926
FLAXSEED	445	339	480	464	542	437	513	573	607	428	515
SOYBEANS	944	882	981	947	1,000	1,054	1,198	1,229	1,092	1,060	1,163
PEANUTS, IN SHELL	6,164	6,331	7,457	7,425	5,285	7,230	6,367	8,126	6,528	7,449	7,614
RAPESEED	1,774	1,753	1,977	2,396	1,865	2,234	2,097	2,623	2,321	1,966	2,643
SESAME SEED	575	616	759	621	543	644	593	669	621	684	677
CASTOR BEANS	147	153	168	189	190	175	271	265	268	270	300
CITRONELLA OIL	3	1	1	1	1	1	1	1	1	1	1
VEGETABLES	14,836	19,534	18,788	19,678	19,530	19,104	19,404	19,802	20,547	20,840	21,017
CITRUS FRUIT	1,456	2,761	3,191	3,258	4,350	4,306	4,314	4,679	4,219	4,493	4,649
APPLES	1,186	1,304	1,233	1,226	1,220	1,254	1,147	1,239	1,229	1,309	1,226
PEARS	360	535	516	493	510	547	560	540	570	605	634
PEACHES	30	68	78	66	80	84	89	86	92	84	82
PENSIMMONS	400	478	373	326	338	379	326	313	304	325	327
BANANAS	1,377	1,888	1,751	1,871	1,994	1,803	2,087	2,320	1,816	1,898	1,930
PINEAPPLES	554	869	854	991	969	950	886	932	904	973	1,080
OTHER FRUIT	1,415	1,724	1,721	1,828	1,809	2,041	2,274	2,288	2,503	2,455	2,614

Continued--

TABLE 2--SOUTH AND EAST ASIA

AGRICULTURAL PRODUCTION FOR SELECTED YEARS -- continued

COMMODITY	AVERAGE 1961-65	1969	1970	1971	1972	1973	1974	1975	1976	1977	1978
	- - - - - 1,000 METRIC TONS - - - - -										
SPICES	39	72	68	67	68	67	68	65	63	65	70
COFFEE	197	300	309	340	304	325	332	342	330	356	362
COCOA BEANS	6	6	6	6	5	6	6	6	6	6	6
TEA	791	837	860	875	904	933	930	956	963	1,022	1,033
RUBBER	1,798	2,515	2,578	2,654	2,736	3,086	3,013	2,914	3,211	3,389	3,484
ABACA	114	108	122	105	110	115	126	134	140	140	150
KAPOK	23	28	28	29	28	29	29	29	29	30	30
HEMP FIBER	6	7	7	5	5	4	4	4	4	4	4
PALM OIL	270	515	616	799	928	740	1,159	1,403	1,652	1,981	1,950
COPRA	3,265	3,187	3,265	3,491	3,931	3,349	2,997	3,971	4,576	4,341	4,480
PALM KERNELS	63	117	135	175	196	193	244	302	359	433	424
MEATS	614	913	944	971	1,025	1,117	1,058	1,041	1,159	1,191	1,212
BEEF AND VEAL	278	287	309	321	337	287	341	418	374	442	499
PORK	316	545	690	784	663	923	1,053	1,128	1,144	1,315	1,472
POULTRY MEAT	148	400	487	537	639	705	764	617	701	785	890
OTHER MEAT	23	13	11	10	7	6	5	5	6	6	8
MILK	2,729	4,523	4,776	4,833	4,952	4,927	4,886	4,981	5,268	5,759	6,172
EGGS	882	1,607	1,739	1,806	1,794	1,805	1,799	1,788	1,860	1,878	1,956

TABLE 3--OCEANIA

AGRICULTURAL PRODUCTION FOR SELECTED YEARS

COMMODITY	AVERAGE 1961-65	1969	1970	1971	1972	1973	1974	1975	1976	1977	1978
	- 1,000 METRIC TONS -										
WHEAT	8,469	11,003	8,177	8,932	8,974	12,363	11,572	12,185	12,094	9,868	17,988
RYE	11	20	22	24	9	21	8	11	15	12	14
RICE, PADRY	136	256	247	299	348	309	409	398	418	487	571
CORN	192	201	250	313	330	257	194	338	363	403	338
BARLEY	1,076	1,932	2,524	3,324	2,062	2,656	2,757	3,513	3,161	2,690	4,219
OATS	1,206	1,298	1,671	1,335	765	1,152	937	1,206	1,116	1,059	1,410
MILLET	29	26	20	29	24	24	35	23	14	20	20
BURGHUM	221	294	547	1,297	1,228	1,018	1,061	901	1,124	956	669
PULSES	25	57	50	52	60	60	53	68	55	45	48
POTATOES	755	1,067	1,015	957	1,066	937	855	968	944	976	984
ONIONS	21	30	26	30	32	32	39	29	38	40	40
SUGARCANE	12,936	15,784	17,645	19,391	18,928	19,278	20,418	21,959	23,344	23,493	21,500
TOBACCO	16	16	20	20	19	19	18	18	18	19	18
COTTON	8	28	20	44	31	31	33	25	28	44	48
FLAXSEED	24	37	31	10	11	14	36	16	19	44	31
PEANUTS, IN SHELL	18	17	43	31	46	39	29	24	31	27	31
VEGETABLES	601	745	800	852	957	893	794	884	871	890	960
GRASS SEED	38	50	42	61	38	48	45	47	44	50	50
CITRUS FRUIT	241	291	384	363	424	389	420	444	410	484	444
APPLES	426	529	559	557	509	583	488	527	447	448	428
PEARS	139	124	209	208	202	206	179	172	154	117	126
APRICOTS	38	44	39	53	32	44	37	27	24	27	23
PEACHES	97	131	138	147	139	138	104	115	103	89	78
BANANAS	126	132	130	128	124	125	114	97	115	97	93
PINEAPPLES	83	120	141	154	124	115	110	103	129	110	120
GRAPES	600	553	758	549	832	603	552	728	710	726	786
BEEF AND VEAL	1,220	1,386	1,441	1,560	1,848	1,756	1,952	2,388	2,614	2,688	2,925
MUTTON AND LAMB	1,070	1,316	1,368	1,520	1,268	1,013	1,028	1,079	1,083	1,069	975
PORK	164	211	221	236	277	246	204	208	218	238	234
POULTRY MEAT	7	10	12	17	17	13	14	14	23	25	24
MILK	12,481	14,164	13,411	13,212	13,373	12,671	12,811	13,022	12,617	11,576	12,016
WOOL, GREASY BASIS	1,085	1,251	1,220	1,202	1,044	986	1,088	1,066	1,006	988	1,006
EGGS	167	210	227	221	170	167	175	164	158	169	161

TABLE 4 -- SOUTH AND EAST ASIA AND OCEANIA

INDICES OF TOTAL AGRICULTURAL PRODUCTION, BY COUNTRY, 1969-78

	(1961-65 = 100)									PRELIM. 1978
	1969	1970	1971	1972	1973	1974	1975	1976	1977	
BANGLADESH	121	114	100	103	117	109	123	116	126	132
SRI LANKA	123	128	122	119	119	126	119	119	131	138
INDIA	117	124	127	119	129	122	139	135	147	154
PAKISTAN	149	158	157	156	157	162	155	165	184	176
SOUTH ASIA	119	126	126	120	129	124	138	135	147	153
BURMA	105	107	106	101	116	116	118	119	121	128
INDONESIA	113	121	123	120	130	138	140	145	146	158
JAPAN	115	109	102	110	110	110	115	109	118	116
KOREA, REPUBLIC OF	131	129	130	136	139	144	158	170	176	181
MALAYSIA, WEST	149	156	169	170	195	205	191	220	235	232
PHILIPPINES	126	130	137	133	143	146	161	172	173	174
TAIWAN	128	138	134	137	146	146	145	162	164	162
THAILAND	129	122	141	131	159	156	162	167	167	179
EAST ASIA	120	115	117	121	126	128	134	135	142	144
EAST ASIA LESS JAPAN	125	130	134	133	145	149	154	165	168	174
SOUTH AND EAST ASIA	120	122	121	120	128	126	135	135	144	148
SO. AND E. ASIA LESS JAPAN	121	127	129	124	135	132	143	145	155	160
AUSTRALIA	121	129	126	112	118	121	126	123	118	135
NEW ZEALAND	120	118	119	123	115	115	123	130	126	127
OCEANIA	121	115	124	115	117	119	125	125	120	133

TABLE 5.-- SOUTH AND EAST ASIA AND OCEANIA

INDICES OF PER CAPITA AGRICULTURAL PRODUCTION, BY COUNTRY, 1969-78

(1961-65 = 100)

	1969	1970	1971	1972	1973	1974	1975	1976	1977	PRELIM. 1978
BANGLADESH	104	95	82	82	92	83	91	84	89	90
SRI LANKA	108	109	102	97	95	98	91	89	96	100
INDIA	102	107	107	98	104	96	107	102	109	112
PAKISTAN	126	120	124	120	118	118	109	113	122	115
SOUTH ASIA	104	102	106	98	103	97	106	101	108	110
BURMA	91	91	90	84	94	92	91	90	90	92
INDONESIA	98	102	102	97	102	106	106	107	106	112
JAPAN	107	101	93	99	97	96	100	93	100	97
KOREA, REPUBLIC OF	112	109	107	110	111	112	120	127	130	131
MALAYSIA, WEST	128	130	137	136	151	155	141	159	165	158
PHILIPPINES	105	105	108	102	107	106	114	119	117	115
TAIWAN	107	112	107	107	112	110	107	117	116	113
THAILAND	108	105	111	100	118	113	115	116	114	119
EAST ASIA	106	103	99	100	102	102	104	103	106	106
EAST ASIA LESS JAPAN	107	109	110	107	113	114	115	121	120	122
SOUTH AND EAST ASIA	105	105	102	99	103	99	104	102	107	107
S. AND E. ASIA LESS JAPAN	105	106	107	101	107	103	109	108	113	114
AUSTRALIA	108	104	107	95	98	99	102	99	93	106
NEW ZEALAND	110	106	105	107	98	96	101	104	99	98
OCEANIA	109	105	107	98	98	98	102	101	95	104

TABLE 6.-- SOUTH AND EAST ASIA AND OCEANIA

INDICES OF TOTAL FOOD PRODUCTION, BY COUNTRY, 1969-78

(1961-65 = 100)

	1969	1970	1971	1972	1973	1974	1975	1976	1977	PRELIM. 1978
BANGLADESH	121	114	102	102	119	114	129	120	131	134
SRI LANKA	125	140	128	122	119	145	121	127	155	170
INDIA	118	127	127	119	130	122	140	137	149	156
PAKISTAN	150	160	152	152	159	164	161	177	193	187
SOUTH ASIA	120	128	126	119	130	124	140	137	150	156
BURMA	105	107	106	101	111	112	115	116	119	126
INDONESIA	113	122	124	119	130	140	141	145	145	158
JAPAN	115	110	103	110	110	111	115	109	118	117
KOREA, REPUBLIC OF	130	129	129	131	135	141	155	167	170	176
MALAYSIA, WEST	141	156	178	189	202	230	238	260	280	261
PHILIPPINES	127	131	138	134	145	147	163	173	175	176
TAIWAN	128	138	135	138	147	147	146	163	165	163
THAILAND	128	132	139	125	154	157	167	174	169	183
EAST ASIA	119	110	116	119	124	127	133	133	139	141
EAST ASIA LESS JAPAN	124	125	132	130	141	147	154	164	166	171
SOUTH AND EAST ASIA	119	123	121	119	127	125	136	135	144	148
SO. AND E. ASIA LESS JAPAN	121	120	120	123	134	132	145	146	155	161
AUSTRALIA	121	122	130	120	130	129	140	139	131	157
NEW ZEALAND	123	119	121	129	121	119	129	139	132	134
OCEANIA	122	121	128	123	127	127	137	139	131	150

TABLE 7.-- SOUTH AND EAST ASIA AND OCEANIA

INDICES OF PER CAPITA FOOD PRODUCTION, BY COUNTRY, 1969-78

(1961-65 = 100)

	1969	1970	1971	1972	1973	1974	1975	1976	1977	PRELIM. 1978
BAGLADESH	104	95	84	82	93	87	96	86	92	92
SRI LANKA	109	119	106	99	95	113	93	96	114	123
INDIA	103	109	107	98	104	96	108	103	111	113
PAKISTAN	126	131	121	117	119	119	114	121	128	121
SOUTH ASIA	105	110	106	97	104	97	107	103	110	112
BURMA	91	91	89	84	90	88	89	88	88	91
INDONESIA	98	103	103	96	103	108	107	107	104	111
JAPAN	107	101	94	99	98	97	100	93	100	98
KOREA, REPUBLIC OF	112	108	106	106	107	109	112	125	125	127
MALAYSIA, WEST	121	131	145	150	157	175	176	187	197	177
PHILIPPINES	106	106	109	103	108	107	116	120	118	116
THAI	107	112	108	108	113	111	108	118	117	114
THAILAND	107	109	110	96	115	114	118	121	115	122
EAST ASIA	105	102	92	99	101	101	104	102	104	104
EAST ASIA LESS JAPAN	107	102	108	104	110	112	115	120	119	119
SOUTH AND EAST ASIA	104	106	102	98	102	98	105	102	107	107
SO. AND E. ASIA LESS JAPAN	105	109	107	100	107	103	110	109	113	115
AUSTRALIA	108	106	111	101	108	106	113	111	104	123
NEW ZEALAND	112	107	107	112	103	100	106	112	104	103
OCEANIA	110	107	111	105	107	105	112	112	104	118

TABLE 8.-- SOUTH AND EAST ASIA AND OCEANIA

AGGREGATES OF TOTAL AGRICULTURAL PRODUCTION, BY COUNTRY, AVERAGE 1961-65, ANNUAL 1969-78

	AVERAGE 1961-65	1969	1970	1971	1972	1973	1974	1975	1976	1977	PRELIM. 1978
- - - - - MILLION DOLLARS AT CONSTANT PRICES - - - - -											
BANGLADESH	1,098.2	1,329.5	1,245.1	1,059.0	1,128.0	1,287.1	1,200.6	1,354.0	1,271.6	1,389.0	1,447.7
SRI LANKA	229.8	283.6	294.3	281.2	274.3	274.0	288.5	274.1	275.1	300.7	318.2
INDIA	8,453.0	9,849.0	10,519.6	10,718.8	10,039.5	10,898.1	10,311.4	11,708.0	11,429.4	12,442.3	12,992.1
PAKISTAN	721.3	1,078.0	1,143.0	1,131.4	1,123.0	1,136.0	1,172.0	1,120.3	1,187.8	1,324.2	1,269.2
SOUTH ASIA	10,502.3	12,540.1	13,206.0	13,230.4	12,565.2	13,595.2	12,972.5	14,456.4	14,161.9	15,456.2	16,027.2
BURMA	219.7	230.0	235.1	233.2	221.8	255.7	254.7	259.0	261.1	266.6	281.0
INDONESIA	1,460.0	1,653.6	1,765.1	1,802.0	1,752.2	1,893.7	2,010.3	2,042.7	2,116.4	2,138.0	2,309.8
JAPAN	6,256.4	7,169.8	6,825.4	6,912.3	6,873.8	6,873.0	6,897.0	7,202.6	6,830.3	7,391.9	7,287.1
KOREA, REPUBLIC OF	1,103.9	1,441.0	1,427.1	1,420.1	1,506.3	1,538.3	1,585.4	1,744.7	1,878.9	1,944.4	1,993.3
MALAYSIA, WEST	508.4	759.7	753.8	857.1	866.6	924.4	1,039.9	968.8	1,119.0	1,194.3	1,181.3
PHILIPPINES	943.0	1,187.9	1,223.4	1,251.0	1,251.0	1,353.2	1,377.7	1,518.0	1,617.7	1,627.9	1,638.7
TAIWAN	608.6	777.1	838.0	815.8	834.8	888.2	887.5	879.7	984.1	998.2	986.4
THAILAND	712.2	919.2	945.1	1,001.0	930.8	1,131.0	1,108.4	1,155.0	1,191.4	1,191.1	1,277.9
EAST ASIA	11,812.2	14,138.3	14,067.0	13,842.5	14,237.3	14,925.5	15,160.9	15,770.5	15,998.9	16,752.4	16,955.5
EAST ASIA LESS JAPAN	5,555.8	6,968.5	7,231.6	7,430.2	7,363.5	8,052.5	8,263.9	8,567.9	9,168.6	9,360.5	9,668.4
SOUTH AND EAST ASIA	22,314.5	26,678.4	27,273.0	27,072.9	26,802.5	28,520.7	28,133.4	30,226.9	30,160.8	32,208.6	32,982.7
SO. AND E. ASIA LESS JAPAN	16,058.1	19,508.6	20,437.6	20,660.6	19,928.7	21,647.7	21,236.4	23,024.3	23,330.5	24,816.7	25,695.6
AUSTRALIA	2,703.2	3,273.4	3,231.6	3,394.6	3,038.8	3,179.8	3,274.5	3,407.1	3,332.3	3,187.8	3,654.5
NEW ZEALAND	577.4	1,176.2	1,145.8	1,162.8	1,200.0	1,123.9	1,120.5	1,206.9	1,268.4	1,227.1	1,240.4
OCEANIA	3,680.6	4,449.6	4,377.4	4,557.4	4,238.8	4,303.7	4,395.0	4,614.0	4,600.7	4,414.9	4,894.9

TABLE 9.--- SOUTH AND EAST ASIA AND OCEANIA

AGGREGATES OF TOTAL FOOD PRODUCTION, BY COUNTRY, AVERAGE 1961-65, ANNUAL 1969-78

	AVERAGE 1961-65	1969	1970	1971	1972	1973	1974	1975	1976	1977	PRELIM. 1978
----- MILLION DOLLARS AT CONSTANT PRICES -----											
BANGLADESH	964.0	1,171.0	1,054.5	986.8	982.2	1,151.8	1,098.9	1,243.1	1,152.4	1,258.5	1,293.0
SRI LANKA	88.6	110.6	123.9	113.6	108.1	105.8	128.3	137.3	112.6	137.1	150.7
INDIA	7,604.8	8,537.1	9,625.0	9,673.8	9,030.7	9,855.8	9,252.4	10,663.8	10,385.7	11,330.5	11,838.3
PAKISTAN	597.8	895.3	957.8	908.4	910.4	951.3	979.8	964.8	1,058.0	1,155.0	1,119.1
SOUTH ASIA	9,255.2	11,114.0	11,805.2	11,682.0	11,831.4	12,064.7	11,459.4	12,979.0	12,708.7	13,881.1	14,393.1
FLRPA	207.6	217.8	222.8	220.2	208.8	239.8	231.9	238.6	241.8	247.3	262.2
INDONESIA	1,205.5	1,366.4	1,417.5	1,458.3	1,436.3	1,572.3	1,688.1	1,794.6	1,744.0	1,747.6	1,902.7
JAPAN	6,003.9	6,899.1	6,585.1	6,165.7	6,630.1	6,612.9	6,645.9	6,926.0	6,547.9	7,109.7	7,005.2
KOREA, REPUBLIC OF	1,161.4	1,383.3	1,365.6	1,366.7	1,391.6	1,429.5	1,492.2	1,641.6	1,769.8	1,803.8	1,863.8
MALAYSIA, WEST	172.3	243.3	269.2	306.0	324.8	348.8	396.9	409.8	447.2	481.8	448.9
PHILIPPINES	896.1	1,142.1	1,172.4	1,235.8	1,203.5	1,299.0	1,321.2	1,457.6	1,552.9	1,564.3	1,577.2
TAIWAN	590.3	754.1	815.2	796.5	816.6	867.8	869.5	860.5	961.3	975.2	963.4
THAILAND	582.3	745.1	771.8	869.8	728.5	897.6	917.3	971.7	1,013.3	988.4	1,069.8
EAST ASIA	10,720.4	12,748.4	12,676.6	12,402.5	12,742.2	13,258.7	13,563.0	14,210.4	14,278.2	14,918.1	15,093.2
EAST ASIA LESS JAPAN	4,716.5	5,849.3	6,027.5	6,237.3	6,112.1	6,645.8	6,917.1	7,284.4	7,730.3	7,808.4	8,088.0
SOUTH AND EAST ASIA	19,975.6	23,862.4	24,481.8	24,084.5	23,773.6	25,323.4	25,022.4	27,189.4	26,986.9	28,799.2	29,486.3
S. AND E. ASIA LESS JAPAN	11,971.7	16,963.3	17,892.7	17,919.3	17,143.5	18,710.5	18,376.5	20,263.4	20,439.0	21,689.5	22,481.1
AUSTRALIA	1,784.5	2,167.1	2,165.3	2,322.6	2,146.6	2,322.6	2,310.4	2,495.9	2,474.5	2,340.9	2,798.3
NEW ZEALAND	704.3	865.0	835.6	853.0	966.5	850.1	840.7	910.3	982.4	930.9	940.6
OCEANIA	2,488.2	3,032.1	3,000.9	3,175.6	3,053.1	3,172.7	3,151.1	3,406.2	3,456.9	3,271.8	3,738.9

TABLE 10.--AUSTRALIA

PRODUCTION BY COMMODITY, VALUE AND INDICES OF TOTAL AGRICULTURAL AND FOOD PRODUCTION, AVERAGE 1961-65, ANNUAL 1969-78

COMMODITY	PRICE	AVERAGE										
	WEIGHT	1961-65	1969	1970	1971	1972	1973	1974	1975	1976	1977	1978
	DOLLARS	-1,000 METRIC TONS-										
WHEAT	51	8,222	16,546	7,090	8,606	6,590	11,987	11,357	11,982	11,667	9,299	17,648
RYE	43	11	20	22	24	9	21	8	11	15	12	14
RICE, PADDY	58	136	256	247	299	248	309	409	308	418	487	571
CORN	52	176	158	191	212	214	139	106	133	131	144	111
BARLEY	43	978	1,699	2,350	3,065	1,727	2,398	2,515	3,179	2,847	2,386	3,953
OATS	38	1,172	1,246	1,613	1,275	736	1,107	874	1,141	1,072	991	1,551
MILLET	33	29	26	20	29	24	26	35	23	14	28	28
SORGHUM	33	221	254	547	1,297	1,228	1,018	1,061	901	1,124	956	669
POTATOES	58	551	811	762	747	822	721	649	742	696	728	734
SUGARCANE	11	12,936	15,784	17,645	19,391	18,928	19,278	20,418	21,959	23,344	23,493	21,500
TOBACCO	2,513	12	15	17	17	16	16	15	15	15	16	13
COTTON	744	8	28	28	44	31	31	33	25	28	44	48
FLAXSEED	142	24	37	31	10	14	14	36	16	15	44	31
PEANUTS, IN SHELL	187	18	17	43	31	46	39	29	26	24	27	31
VEGETABLES	168	601	745	809	852	957	893	794	884	871	890	960
GRASS SEED	517	14	26	24	27	15	20	22	23	26	25	25
CITRUS FRUIT	77	241	291	384	363	424	389	420	444	410	444	444
APPLES	93	340	422	425	443	360	431	335	368	275	382	245
PEARS	100	124	107	190	188	184	162	158	140	140	105	112
APRICOTS	125	38	44	39	53	32	44	37	27	26	27	23
PEACHES	111	81	108	112	123	117	114	81	91	79	66	61
BANANAS	106	126	132	130	128	124	125	118	97	115	97	93
PINEAPPLES	56	81	120	141	154	126	115	110	103	129	110	120
GRAPES	66	608	553	758	549	832	603	552	728	710	728	786
BEEF AND VEAL	238	541	1,010	1,048	1,167	1,438	1,310	1,547	1,840	1,988	2,130	1,970
MUTTON AND LAMB	265	599	755	825	956	713	457	527	588	550	511	480
PORK	579	122	174	182	154	236	211	175	174	185	199	208
MILK	54	6,962	7,712	9,450	7,275	6,952	6,978	6,710	6,454	5,963	5,338	5,505
WOOL, GREASY BASIS	1,115	780	923	886	880	35	701	794	754	703	677	691
EGGS	582	148	185	196	185	135	131	136	129	123	131	126
AGGREGATES OF PRODUCTION		- MILLION DOLLARS AT CONSTANT PRICES -										
CROPS		992.5	1,265.5	1,240.9	1,355.3	1,180.2	1,470.6	1,414.4	1,521.8	1,498.9	1,378.0	1,869.5
LIVESTOCK		1,785.2	2,095.5	2,077.7	2,125.1	1,941.2	1,789.7	1,936.0	1,958.7	1,903.4	1,876.9	1,853.0
LIVESTOCK FEED DEDUCTION	-14	-74.5	-87.6	-87.0	-85.8	-82.6	-80.5	-75.9	-73.4	-67.0	-68.1	-68.0
TOTAL AGRICULTURE		2,703.2	3,273.4	3,231.6	3,394.6	3,038.8	3,179.8	3,274.5	3,407.1	3,332.3	3,187.8	3,654.5
TOTAL FOOD		1,784.9	2,167.1	2,165.3	2,322.6	2,146.6	2,322.6	2,310.4	2,495.9	2,474.5	2,340.9	2,798.3
INDICES OF PRODUCTION		(1961-65 = 100)										
CROPS		100	128	125	127	119	148	143	153	151	139	188
TOTAL AGRICULTURE		100	121	120	126	112	118	121	126	123	118	135
TOTAL FOOD		100	121	122	130	120	130	129	140	139	131	157
PER CAPITA AGRICULTURE		100	108	105	108	95	98	100	102	99	94	106
PER CAPITA FOOD		100	109	106	112	102	109	106	114	111	104	123
INDEX OF POPULATION		1961-65 POPULATION = 10,959,000										
1961-65 POPULATION		100.0	111.9	114.2	116.4	118.3	119.6	121.7	123.2	124.5	125.7	127.0

TABLE 11.--BANGLADESH

PRODUCTION BY COMMODITY, VALUE AND INDICES OF TOTAL AGRICULTURAL AND FOOD PRODUCTION, AVERAGE 1961-65, ANNUAL 1969-78

COMMODITY	PRICE	AVERAGE										
	WEIGHT	1961-65	1969	1970	1971	1972	1973	1974	1975	1976	1977	1978
	DOLLARS	-1,000 METRIC TONS-										
WHEAT	49	38	93	105	112	91	111	117	218	259	336	490
RICE, FADLY	60	15,050	18,026	16,733	14,913	15,150	17,881	16,947	19,163	17,647	19,317	19,678
CCRA	42	4	3	3	2	2	2	2	2	2	2	3
BARLEY	17	16	18	20	26	16	15	16	17	15	16	16
CHICKPEAS	47	36	55	58	55	58	60	62	70	39	41	70
SUGARCANE	9	5,022	7,414	7,537	7,600	5,686	6,340	6,800	7,250	7,250	7,500	7,750
TOBACCO	347	28	41	42	34	39	41	41	40	44	51	50
COTTON	259	3	2	2	2	2	2	2	2	1	1	1
JUTE	95	1,119	1,302	1,248	907	1,175	1,080	720	792	886	994	1,182
COTTONSEED	52	6	4	4	4	4	4	6	6	4	4	3
FLAXSEED	71	10	7	8	8	8	4	4	5	5	5	7
RAPESEED	82	98	130	128	128	139	120	99	116	112	114	134
SESAME SEED	126	25	30	27	29	25	23	25	28	29	27	30
TEA	654	26	30	31	20	30	27	28	32	29	27	37
AGGREGATES OF PRODUCTION		-MILLION DOLLARS AT CONSTANT PRICES-										
CROPS		1,098.2	1,329.5	1,249.1	1,059.0	1,128.0	1,287.1	1,200.6	1,354.0	1,271.6	1,389.0	1,447.7
LIVESTOCK		0.0	0.0	0.0	0.0	0.0	0.0	0.0	0.0	0.0	0.0	0.0
TOTAL AGRICULTURE		1,098.2	1,329.5	1,249.1	1,059.0	1,128.0	1,287.1	1,200.6	1,354.0	1,271.6	1,389.0	1,447.7
TOTAL FOOD		564.0	1,171.0	1,094.5	986.8	982.2	1,151.8	1,098.9	1,243.1	1,152.4	1,258.5	1,293.0
INDICES OF PRODUCTION		(1961-65 = 100)										
CROPS		100	121	114	100	103	117	109	123	116	126	132
TOTAL AGRICULTURE		100	121	114	100	103	117	109	123	116	126	132
TOTAL FOOD		100	121	114	102	102	119	114	129	120	131	134
PER CAPITA AGRICULTURE		100	104	96	82	83	92	84	92	84	89	91
PER CAPITA FOOD		100	105	96	84	82	94	87	96	87	92	92
INDEX OF POPULATION		1961-65 POPULATION = 58,018,000										
		100.0	115.9	118.9	121.8	124.2	127.4	130.7	134.2	137.9	141.6	145.0

TABLE 12.--BURMA

PRODUCTION BY COMMODITY, VALUE AND INDICES OF TOTAL AGRICULTURAL AND FOOD PRODUCTION, AVERAGE 1961-65, ANNUAL 1969-78

COMMODITY	PRICE	AVERAGE	1969	1970	1971	1972	1973	1974	1975	1976	1977	1978
	WEIGHT	1961-65										
DOLLARS			-1,000 METRIC TONS-									
WHEAT	50	36	26	33	40	39	40	63	56	75	92	95
RICE, PADDY	13	7,769	7,985	8,162	8,175	7,360	8,602	8,582	9,207	9,312	9,462	10,000
CORN	12	59	68	67	73	59	32	62	65	62	95	85
MILLET	9	51	53	52	49	48	45	50	50	50	50	50
PEASES	30	368	320	273	290	345	265	262	291	255	337	350
POTATOES	24	39	36	41	41	50	49	57	45	54	60	67
SUGARCANE	3	1,104	1,308	1,312	1,437	1,400	2,020	1,678	1,199	1,621	1,600	1,600
TOBACCO	121	41	46	41	44	44	66	63	64	64	64	65
COTTON	139	19	11	14	16	14	43	37	42	37	33	17
JUTE	82	10	22	28	27	30	88	78	39	37	40	55
COTTONSEED	10	35	23	28	33	28	32	14	13	18	11	6
PEANUTS, IN SHELL	97	259	444	529	450	390	500	466	450	450	450	450
SESAME SEED	68	73	102	132	91	90	90	125	130	130	130	130
VEGETABLES	32	536	1,050	974	1,044	1,050	1,075	1,075	1,075	1,075	1,075	1,182
BANANAS	24	173	218	176	187	200	225	230	232	243	245	270
OTHER FRUIT	64	517	437	473	473	473	473	473	475	475	475	523
TEA	56	5	9	6	9	9	9	9	9	9	9	9
RUBBER	215	16	13	13	13	13	15	15	15	14	15	15
AGGREGATES OF PRODUCTION			-MILLION DOLLARS AT CONSTANT PRICES-									
CROPS		219.7	234.0	235.1	233.2	221.8	255.7	254.7	259.9	261.1	266.6	281.0
LIVESTOCK		0.0	0.0	0.0	0.0	0.0	0.0	0.0	0.0	0.0	0.0	0.0
TOTAL AGRICULTURE		219.7	234.0	235.1	233.2	221.8	255.7	254.7	259.9	261.1	266.6	281.0
TOTAL FOOD		207.6	217.8	222.8	220.2	208.8	238.8	231.9	238.6	241.8	247.3	262.2
INDICES OF PRODUCTION			(1961-65 = 100)									
CROPS		100	105	107	106	101	116	116	118	119	121	128
TOTAL AGRICULTURE		100	105	107	106	101	116	116	118	119	121	128
TOTAL FOOD		100	105	107	106	101	111	112	115	116	119	126
PER CAPITA AGRICULTURE		160	92	92	90	85	95	92	92	90	90	93
PER CAPITA FOOD		160	92	92	90	84	91	89	89	88	88	92
INDEX OF POPULATION												
1961-65 POPULATION= 23,654,000		100.0	114.2	116.8	118.0	119.4	122.8	125.8	128.8	131.9	134.8	137.8

TABLE 13.--INDIA

PRODUCTION BY COMMODITY, VALUE AND INDICES OF TOTAL AGRICULTURAL AND FOOD PRODUCTION, AVERAGE 1961-65, ANNUAL 1969-78

COMMODITY	PRICE	AVERAGE	1969	1970	1971	1972	1973	1974	1975	1976	1977	1978
	WEIGHT	1961-65										
DOLLARS		-1,000 METRIC TONS-										
WHEAT	66	11,192	18,651	20,093	23,832	26,410	24,735	21,776	24,104	28,846	29,010	31,328
RICE, PADDY	53	52,264	61,708	63,401	64,667	58,926	66,077	62,438	73,183	62,938	75,093	74,829
CORN	55	4,599	5,674	7,486	5,181	6,388	5,804	5,559	7,256	6,361	5,947	5,500
BARLEY	52	2,601	2,424	2,716	2,784	2,577	2,379	2,371	3,135	3,192	2,344	2,309
MILLET	61	7,729	9,176	12,172	9,196	7,404	11,557	7,021	10,457	9,650	9,728	10,580
SORGHUM	61	8,845	9,721	8,105	7,722	6,968	9,097	10,414	9,504	10,524	11,818	12,080
CHICKPEAS	59	5,535	4,309	5,546	5,199	5,081	4,537	4,099	4,015	5,079	5,424	5,451
PIGEON PEA	68	1,660	1,816	1,842	1,883	1,683	1,928	1,834	2,099	1,725	1,808	1,750
OTHER PULSES	77	4,512	4,253	4,303	4,756	4,330	3,442	4,500	4,165	5,061	4,212	4,459
POTATOES	41	3,023	4,726	3,513	4,807	4,826	4,451	4,861	6,225	7,306	7,170	8,153
CASSAVA	20	2,295	4,636	5,214	5,130	5,939	6,371	6,421	6,326	6,638	6,375	6,493
SWEET POTATOES	39	584	1,764	1,444	1,750	2,267	1,550	1,658	1,672	1,811	1,361	1,800
SUGARCANE	8	106,403	124,676	135,024	126,368	113,570	124,867	140,805	144,289	140,609	153,809	181,628
TOBACCO	436	330	361	337	362	419	372	462	353	350	414	430
COTTON	281	1,032	1,052	972	1,296	1,129	1,161	1,140	1,240	1,110	1,165	1,275
JUTE	130	1,022	1,014	889	1,023	896	1,120	805	799	962	961	1,000
COTTONSEED	51	2,064	2,104	1,944	2,592	2,241	2,320	2,502	2,250	2,200	2,800	2,900
FLAXSEED	84	432	329	469	453	530	428	504	564	598	419	504
PEANUTS, IN SHELL	99	5,048	5,130	6,111	6,181	4,092	5,932	5,111	6,755	5,262	6,017	6,200
RAPESEED	114	1,277	1,347	1,564	1,976	1,433	1,808	1,704	2,252	1,936	1,551	1,610
SESAME SEED	152	444	448	562	450	385	484	392	479	422	486	475
CASTOR BEANS	83	107	116	123	136	154	145	229	210	225	225	250
COFFEE	555	43	74	69	115	74	95	92	98	89	187	110
TEA	532	357	396	422	433	456	473	490	487	512	560	566
RUBBER	438	38	82	92	101	112	123	130	138	138	150	140

AGGREGATES OF PRODUCTION

	-MILLION DOLLARS AT CONSTANT PRICES-											
CROPS	8,453.0	9,849.0	10,519.6	10,718.8	10,039.9	10,898.1	10,311.4	11,708.0	11,429.4	12,442.3	12,992.1	
LIVESTOCK	0.0	0.0	0.0	0.0	0.0	0.0	0.0	0.0	0.0	0.0	0.0	0.0
TOTAL AGRICULTURE	8,453.0	9,849.0	10,519.6	10,718.8	10,039.9	10,898.1	10,311.4	11,708.0	11,429.4	12,442.3	12,992.1	
TOTAL FOOD	7,604.8	8,937.1	9,629.0	9,673.8	9,030.7	9,855.8	9,252.4	10,663.8	10,385.7	11,330.5	11,830.3	

INDICES OF PRODUCTION

(1961-65 = 100)

CROPS	100	117	124	127	119	129	122	139	135	147	154
TOTAL AGRICULTURE	100	117	124	127	119	129	122	139	135	147	154
TOTAL FOOD	100	118	127	127	119	130	122	140	137	145	156
PER CAPITA AGRICULTURE	100	103	107	107	98	104	97	108	103	110	112
PER CAPITA FOOD	100	103	109	107	98	105	96	109	104	111	114

INDEX OF POPULATION

1961-65 POPULATION=472,934,000	100.0	113.6	116.0	118.4	121.1	123.6	126.2	128.8	131.4	134.0	136.7
--------------------------------	-------	-------	-------	-------	-------	-------	-------	-------	-------	-------	-------

TABLE 14.--INDONESIA

PRODUCTION BY COMMODITY, VALUE AND INDICES OF TOTAL AGRICULTURAL AND FOOD PRODUCTION, AVERAGE 1961-65, ANNUAL 1969-78

COMMODITY	PRICE WEIGHT	AVERAGE 1961-65	1969	1970	1971	1972	1973	1974	1975	1976	1977	1978	---1,000 METRIC TONS---	
													DOLLARS	
RICE, FADY	52	14,377	18,313	19,324	20,182	19,386	21,481	22,464	22,331	23,301	22,794	26,029		
CORN	38	2,204	2,292	2,825	2,607	2,254	2,912	3,011	2,903	2,572	3,030	2,500		
CASSAVA	12	11,832	11,034	10,451	10,042	9,450	12,300	14,000	12,456	12,191	12,170	13,000		
SWEET POTATOCES	13	3,165	3,021	3,629	2,153	2,147	2,150	2,300	2,433	2,381	2,450	2,500		
SUGARCANE	5	7,477	8,260	5,785	10,448	8,820	10,500	11,000	11,500	12,000	12,556	11,360		
TOBACCO	862	74	69	72	72	77	79	79	83	118	129	135		
SOYBEANS	73	395	389	488	475	518	529	564	590	522	480	500		
PEANUTS, IN SHELL	76	280	382	419	424	412	434	437	576	517	614	606		
COFFEE	224	111	177	185	191	174	174	180	175	169	177	180		
TEA	263	84	63	67	71	69	79	77	80	84	85	85		
RUBBER	215	663	788	811	804	885	890	890	950	970	1,000	1,050		
KAPCK	74	23	28	28	29	28	29	29	29	29	30	30		
PALM OIL	122	151	189	214	248	269	0	217	411	434	496	500		
COPPA	42	1,251	1,097	1,064	1,135	1,215	1,070	1,150	1,225	1,458	1,376	1,400		
PALM KERNELS	71	33	42	48	56	59	0	49	84	82	92	91		
AGGREGATES OF PRODUCTION														
														-MILLION DOLLARS AT CONSTANT PRICES-
CROPS		1,460.0	1,653.6	1,765.1	1,802.0	1,752.2	1,893.7	2,010.3	2,042.7	2,116.4	2,138.0	2,309.8		
LIVESTOCK		0.0	0.0	0.0	0.0	0.0	0.0	0.0	0.2	0.0	0.0	0.0		
TOTAL AGRICULTURE		1,460.0	1,653.6	1,765.1	1,802.0	1,752.2	1,893.7	2,010.3	2,042.7	2,116.4	2,138.0	2,309.8		
TOTAL FOOD		1,205.5	1,366.4	1,467.5	1,458.3	1,436.3	1,572.3	1,608.1	1,704.6	1,744.0	1,747.6	1,902.7		
INDICES OF PRODUCTION														(1961-65 = 100)
CROPS		100	113	121	123	120	130	138	140	145	146	158		
TOTAL AGRICULTURE		100	113	121	123	120	130	138	140	145	146	158		
TOTAL FOOD		100	113	122	124	119	130	140	141	145	145	158		
PER CAPITA AGRICULTURE		100	58	103	102	97	103	107	106	107	106	112		
PER CAPITA FOOD		100	58	103	103	97	103	109	107	107	105	112		
INDEX OF POPULATION														
1961-65 POPULATION=125,643,000		100.0	115.3	117.9	120.5	123.3	126.1	129.0	132.0	135.0	138.1	141.3		

TABLE 15 --JAPAN

PRODUCTION BY COMMODITY, VALUE AND INDICES OF TOTAL AGRICULTURAL AND FOOD PRODUCTION, AVERAGE 1961-65, ANNUAL 1969-78

COMMODITY	PRICE WEIGHT	AVERAGE 1961-65	1969	1970	1971	1972	1973	1974	1975	1976	1977	1978
			DOLLARS - - - - -1,000 METRIC TONS- - - - -									
WHEAT	102	1,332	758	474	440	284	202	232	241	222	236	367
RICE, PADDY	202	15,808	17,594	15,861	13,609	14,861	15,180	15,365	16,456	14,716	16,368	15,736
CCRN	75	97	40	33	33	24	19	14	11	11	8	11
BARLEY	100	1,379	812	573	503	325	216	233	221	219	206	326
OATS	108	145	67	61	60	57	41	37	28	22	18	20
MILLET	124	51	14	11	14	12	10	10	4	4	4	4
SCRGHM	134	1	3	0	0	0	0	0	0	0	0	0
OTHER GRAINS	108	36	22	17	20	25	18	0	9	0	0	0
PULSES	196	289	218	254	186	265	235	212	166	151	180	160
POTATGES	40	3,781	3,575	3,611	3,271	3,533	3,413	2,942	3,261	3,742	3,520	3,300
SWEETPOTATOS	35	6,008	2,855	2,564	2,041	1,987	1,550	1,435	1,418	1,279	1,431	1,300
SUGARCANE	13	2,149	2,639	2,584	1,895	2,048	2,937	1,817	1,973	1,981	2,382	2,400
SLGAR BEETS	17	1,323	2,075	2,324	2,197	2,760	2,951	1,879	1,758	2,169	2,333	2,400
TCBACC	1,061	166	174	150	149	144	154	151	166	176	174	171
SOYBEANS	149	302	136	126	122	127	118	133	126	110	111	190
PEANUTS, IN SHELL	179	139	126	124	111	115	97	91	71	65	69	62
RAPESEED	140	178	48	30	23	16	13	9	7	6	5	5
VEGETABLES	82	11,483	14,320	13,319	13,084	13,765	13,276	13,040	12,835	13,112	13,749	13,435
CITRUS FRUIT	178	1,310	2,516	2,511	2,542	3,994	3,909	3,891	4,255	3,755	4,056	3,589
APPLES	91	1,066	1,085	1,021	1,005	959	963	850	902	879	959	837
PEARS	111	330	489	464	445	460	495	523	478	507	531	557
PEARSIMONS	132	382	444	343	303	377	347	284	275	264	275	270
OTHER FRUIT	190	518	680	680	655	641	723	737	710	720	728	778
TEA	957	80	50	91	93	95	101	95	105	100	102	105
BEEF AND VEAL	946	185	216	261	275	295	227	292	353	298	361	418
PORK	690	303	500	648	750	770	820	958	1,040	1,056	1,169	1,285
POULTRY MEAT	593	148	400	487	537	639	705	744	617	701	785	890
OTHER MEAT	596	23	13	11	10	7	6	5	5	6	6	5
MILK	85	2,711	4,509	4,762	4,819	4,939	4,912	4,869	4,981	5,266	5,737	6,150
EGGS	477	282	1,607	1,734	1,806	1,794	1,805	1,799	1,788	1,860	1,878	1,956
AGGREGATES OF PRODUCTION - - - - -MILLION DOLLARS AT CONSTANT PRICES- - - - -												
CROPS		5,773.9	6,347.5	5,855.7	5,413.3	5,837.6	5,834.1	5,785.5	6,068.5	5,669.4	6,132.9	5,917.0
LIVESTOCK		1,121.9	1,512.2	2,175.9	2,323.2	2,409.7	2,415.9	2,584.7	2,637.4	2,699.7	2,927.8	3,186.1
LIVESTOCK FEED DEDUCTION	.57	-639.4	-1,089.9	-1,240.2	-1,324.2	-1,373.5	-1,377.0	-1,473.2	-1,503.3	-1,538.8	-1,668.8	-1,816.0
TOTAL AGRICULTURE		6,256.4	7,169.8	6,735.4	6,412.3	6,873.8	6,873.0	6,897.0	7,202.6	6,830.3	7,391.9	7,287.1
TOTAL FOOD		6,003.9	6,899.1	6,585.1	6,165.2	6,630.1	6,612.9	6,645.9	6,926.0	6,547.9	7,109.7	7,005.2
INDICES OF PRODUCTION (1961-65 = 100)												
CROPS		100	110	102	94	101	101	100	105	98	106	102
TOTAL AGRICULTURE		100	115	109	102	110	110	110	115	109	118	116
TOTAL FOOD		100	115	110	103	110	110	111	115	109	116	117
PER CAPITA AGRICULTURE		100	108	101	54	99	98	97	100	94	100	98
PER CAPITA FOOD		100	108	102	54	100	98	97	100	94	101	98
INDEX OF POPULATION												
1961-65 POPULATION= 96,858,000		100.0	106.5	107.7	109.1	110.6	112.2	113.7	115.2	116.4	117.7	119.0

TABLE 16.--KOREA, REPUBLIC OF

PRODUCTION BY COMMODITY, VALUE AND INDICES OF TOTAL AGRICULTURAL AND FOOD PRODUCTION, AVERAGE 1961-65, ANNUAL 1969-78

COMMODITY	PRICE	AVERAGE										
	WEIGHT	1961-65	1969	1970	1971	1972	1973	1974	1975	1976	1977	1978
	DOLLARS	-1,000 METRIC TONS-										
WHEAT	90	170	224	219	196	149	100	74	97	82	45	36
RYE	79	16	13	10	8	8	6	6	9	6	4	4
RICE, PADDY	129	4,821	5,681	5,471	5,552	5,496	5,849	6,173	6,485	7,243	8,342	8,851
CCRN	91	26	63	68	64	54	61	58	60	84	113	112
BARLEY	97	1,148	1,666	1,591	1,510	1,600	1,443	1,388	1,700	1,759	814	1,348
MILLET	90	71	61	45	35	32	31	30	26	26	26	26
SORGHUM	90	6	7	7	6	5	6	5	4	4	6	6
OTHER GRAINS	77	7	6	5	5	4	7	4	4	5	4	4
PULSES	132	25	38	39	35	32	34	43	47	52	53	55
POTATOES	57	483	599	605	589	575	470	469	675	591	594	355
SWEET POTATOES	35	1,828	2,123	2,136	1,901	1,850	1,669	1,450	1,953	1,783	1,560	1,627
TOBACCO	954	40	59	56	63	115	111	95	105	112	145	134
COTTON	329	5	5	4	4	3	4	3	4	2	2	4
COTTONSEED	66	11	9	9	8	6	6	6	6	4	4	6
SOYBEANS	150	163	229	232	222	225	246	319	311	295	319	293
PEANUTS, IN SHELL	201	3	9	10	8	10	4	5	5	5	5	6
VEGETABLES	86	1,338	2,428	2,520	2,708	2,740	2,612	2,975	3,280	3,520	3,016	3,350
APPLES	117	120	219	212	221	261	291	297	337	350	350	389
PEARS	116	30	46	52	48	50	52	57	62	63	74	77
PEACHES	98	30	68	78	66	80	84	89	88	92	84	82
PERSIMMONS	153	18	34	30	23	31	32	42	38	40	50	57
OTHER FRUIT	223	15	49	51	52	54	90	98	135	159	162	203
HEMP FIBER	406	6	7	7	5	5	4	4	4	4	4	1
BEEF AND VEAL	758	43	31	48	46	42	60	49	65	76	81	81
PORK	437	15	37	42	34	93	103	95	88	88	146	187
AGGREGATES OF PRODUCTION		-MILLION DOLLARS AT CONSTANT PRICES-										
CROPS		1,064.5	1,461.3	1,372.3	1,386.3	1,433.5	1,447.8	1,506.8	1,656.9	1,782.8	1,819.2	1,850.2
LIVESTOCK		39.4	39.7	54.8	49.8	72.4	90.5	78.6	87.8	96.1	125.2	143.1
TOTAL AGRICULTURE		1,103.9	1,501.0	1,427.1	1,436.1	1,505.9	1,538.3	1,585.4	1,744.7	1,878.9	1,944.4	1,993.3
TOTAL FOOD		1,061.4	1,386.3	1,365.6	1,366.7	1,393.6	1,429.5	1,492.2	1,641.6	1,769.8	1,803.2	1,863.8
INDICES OF PRODUCTION		(1961-65 = 100)										
CROPS		100	132	125	130	135	136	142	156	167	171	174
TOTAL AGRICULTURE		100	131	125	130	136	139	144	158	170	176	181
TOTAL FOOD		100	130	125	129	131	135	141	155	167	170	176
PER CAPITA AGRICULTURE		100	113	109	107	111	111	112	121	128	130	131
PER CAPITA FOOD		100	112	109	107	107	107	110	118	125	126	128
INDEX OF POPULATION		1961-65 POPULATION = 27,360,000										
		100.0	115.9	118.6	120.9	123.2	125.5	127.9	130.9	133.1	135.4	137.7

TABLE 17.--MALAYSIA, WEST

PRODUCTION BY COMMODITY, VALUE AND INDICES OF TOTAL AGRICULTURAL AND FOOD PRODUCTION, AVERAGE 1961-65, ANNUAL 1969-78

COMMODITY	PRICE	AVERAGE	1969	1970	1971	1972	1973	1974	1975	1976	1977	1978
	WEIGHT	1961-65										
DOLLARS			-1,000 METRIC TONS-									
RICE, PADDY	99	957	1,354	1,429	1,545	1,565	1,727	1,818	1,718	1,748	1,580	1,307
SWEET POTATCES	56	127	112	112	91	81	71	51	61	62	60	60
TOBACCO	594	3	2	3	4	5	5	9	6	4	4	4
BANANAS	62	337	188	213	178	178	142	198	205	210	210	210
PINEAPPLES	35	285	306	283	268	255	242	245	208	225	242	260
COFFEE	483	5	5	6	4	5	5	7	7	7	7	7
TEA	1,592	3	3	3	3	4	4	3	3	4	4	4
RUBBER	424	773	1,199	1,216	1,279	1,251	1,491	1,486	1,292	1,557	1,653	1,700
PALM OIL	168	120	326	402	551	659	740	942	1,072	1,218	1,485	1,450
CCPRA	133	136	121	160	167	154	121	109	100	123	120	120
PALM KERNELS	98	30	75	87	119	137	153	195	218	277	341	335
MILK	73	18	14	14	14	13	15	17	20	22	22	22
AGGREGATES OF PRODUCTION			- MILLION DOLLARS AT CONSTANT PRICES -									
CROPS		507.1	758.7	752.8	856.1	865.7	991.3	1,038.7	967.3	1,117.4	1,192.7	1,179.7
LIVESTOCK		1.3	1.0	1.0	1.0	0.9	1.1	1.2	1.5	1.6	1.6	1.6
TOTAL AGRICULTURE		508.4	759.7	753.8	857.1	866.6	992.4	1,039.9	968.8	1,119.0	1,194.3	1,181.3
TOTAL FOOD		172.3	243.3	269.2	306.0	324.8	348.8	356.9	409.8	447.2	481.8	448.9
INDICES OF PRODUCTION			(1961-65 = 100)									
CROPS		100	150	156	169	171	195	205	191	220	235	233
TOTAL AGRICULTURE		100	149	156	169	170	195	205	191	220	235	232
TOTAL FOOD		100	141	156	178	189	202	230	238	260	280	261
PER CAPITA AGRICULTURE		100	128	131	138	136	152	155	141	159	165	159
PER CAPITA FOOD		100	121	131	145	150	158	175	176	188	197	178
INDEX OF POPULATION												
1961-65 POPULATION=	7,892,000	100.0	116.4	119.3	122.3	125.3	128.5	131.6	134.9	138.4	142.0	146.5

TABLE 18.--NEW ZEALAND

PRODUCTION BY COMMODITY, VALUE AND INDICES OF TOTAL AGRICULTURAL AND FOOD PRODUCTION, AVERAGE 1961-65, ANNUAL 1969-78

COMMODITY	PRICE	AVERAGE	1969	1970	1971	1972	1973	1974	1975	1976	1977	1978
	WEIGHT	1961-65										
	DOLLARS		-1,000 METRIC TONS-									
WHEAT	69	248	457	287	326	384	376	215	203	427	369	340
CORN	83	16	51	59	101	116	118	80	205	232	259	227
BARLEY	58	98	233	174	259	335	258	242	334	334	304	266
OATS	76	34	52	58	60	49	45	63	65	44	68	59
PULSES	70	25	57	50	52	60	60	53	48	55	45	48
POTATOS	55	204	256	253	210	244	216	286	226	248	248	250
ONIONS	82	21	30	26	38	32	32	39	29	38	40	40
TOBACCO	1,094	4	3	3	3	3	3	3	3	3	3	3
GRASS SEED	406	24	24	18	34	23	28	23	24	18	25	25
APPLES	125	86	107	134	114	149	152	153	159	172	146	183
PEARS	141	15	17	19	20	18	16	17	14	14	12	14
PEACHES	113	16	23	26	24	22	24	23	24	24	23	17
BEEF AND VEAL	295	278	376	393	393	410	446	405	508	628	558	555
MUTTON AND LAMB	334	471	563	563	564	575	556	501	491	513	498	495
PORK	519	42	37	39	44	41	35	34	34	33	39	39
POULTRY MEAT	992	7	10	12	17	17	13	19	19	23	25	24
MILK	66	5,515	6,422	5,961	5,937	6,421	5,693	6,101	6,568	6,654	6,238	6,511
WOOL, GREASY BASIS	909	285	328	334	322	309	285	294	312	303	311	315
EGGS	810	19	25	31	36	35	36	39	35	35	38	35
AGGREGATES OF PRODUCTION			-MILLION DOLLARS AT CONSTANT PRICES-									
CROPS		70.2	105.2	91.7	105.1	115.6	111.5	95.8	111.1	128.9	126.0	123.0
LIVESTOCK		907.2	1,071.0	1,058.1	1,057.7	1,084.4	1,012.4	1,024.7	1,095.8	1,139.5	1,101.1	1,117.4
TOTAL AGRICULTURE		977.4	1,176.2	1,149.8	1,162.8	1,200.0	1,123.9	1,120.5	1,206.9	1,268.4	1,227.1	1,240.4
TOTAL FOOD		704.3	865.0	835.6	853.7	906.5	850.1	840.7	910.3	982.4	930.9	940.6
INDICES OF PRODUCTION			(1961-65 = 100)									
CROPS		100	150	131	150	165	159	136	158	184	179	175
TOTAL AGRICULTURE		100	120	118	119	123	115	115	123	130	126	127
TOTAL FOOD		100	123	115	121	129	121	119	129	139	132	134
PER CAPITA AGRICULTURE		100	110	106	106	107	99	97	102	105	99	98
PER CAPITA FOOD		100	112	107	108	112	104	100	107	113	104	103
INDEX OF POPULATION			1961-65 POPULATION = 2,534,000									
1961-65 POPULATION =	2,534,000	100.0	109.3	110.9	112.5	114.4	116.4	118.8	121.2	123.9	126.7	129.4

TABLE 19.--PAKISTAN

PRODUCTION BY COMMODITY, VALUE AND INDICES OF TOTAL AGRICULTURAL AND FOOD PRODUCTION, AVERAGE 1961-65, ANNUAL 1969-78

COMMODITY	PRICE	AVERAGE	1969	1970	1971	1972	1973	1974	1975	1976	1977	1978
	WEIGHT	1961-65										
	DOLLARS		-1,000 METRIC TONS-									
WHEAT	49	4,153	6,618	7,294	6,476	6,890	7,442	7,629	7,673	8,691	9,143	8,288
RICE, PADDY	60	1,826	3,605	3,303	3,356	3,498	3,686	3,474	3,930	4,110	4,424	4,650
CORN	42	514	668	717	705	706	768	747	803	764	821	750
BARLEY	37	118	97	104	91	103	109	140	137	130	124	121
MILLET	43	394	302	361	304	360	351	265	308	311	318	341
SORGHUM	39	261	304	329	312	302	378	265	281	261	284	233
CHICKPEAS	47	639	528	511	494	518	553	610	550	601	639	610
SUGARCANE	9	15,852	21,971	26,369	23,167	19,962	19,947	23,910	21,240	25,545	29,379	30,076
TOBACCO	347	72	125	127	113	87	66	66	77	61	74	74
COTTON	259	380	537	544	705	703	623	652	496	418	553	479
COTTONSEED	52	760	1,075	1,087	1,415	1,404	1,318	1,355	992	836	1,106	958
FLAXSEED	71	3	3	3	3	4	5	5	4	4	4	4
RAPESEED	82	220	228	255	269	286	293	285	248	267	296	286
SESAME SEED	126	9	8	10	13	15	10	12	8	12	12	12
AGGREGATES OF PRODUCTION			-MILLION DOLLARS AT CONSTANT PRICES-									
CROPS		721.3	1,078.0	1,143.9	1,131.4	1,123.6	1,136.0	1,172.0	1,120.3	1,187.8	1,324.2	1,269.2
LIVESTOCK		0.0	0.0	0.0	0.0	0.0	0.0	0.0	0.0	0.0	0.0	0.0
TOTAL AGRICULTURE		721.3	1,078.0	1,143.9	1,131.4	1,123.6	1,136.0	1,172.0	1,120.3	1,187.8	1,324.2	1,269.2
TOTAL FOOD		597.8	895.3	957.8	908.4	910.4	951.3	979.8	964.8	1,050.0	1,155.0	1,119.1
INDICES OF PRODUCTION			(1961-65 = 100)									
CROPS		100	149	158	157	156	157	162	155	165	184	176
TOTAL AGRICULTURE		100	149	158	157	156	157	162	155	165	184	176
TOTAL FOOD		100	150	162	152	152	159	164	161	177	193	187
PER CAPITA AGRICULTURE		100	126	130	125	120	118	118	110	113	122	114
PER CAPITA FOOD		100	126	131	121	118	119	119	114	122	129	121
INDEX OF POPULATION			1961-65 POPULATION= 49,710,000									
		100.0	118.5	121.9	125.6	129.3	133.2	137.2	141.3	145.6	149.9	154.4

TABLE 20 ---PHILIPPINES

PRODUCTION BY COMMODITY, VALUE AND INDICES OF TOTAL AGRICULTURAL AND FOOD PRODUCTION, AVERAGE 1961-65, ANNUAL 1969-78

COMMODITY	PRICE	AVERAGE	1969	1970	1971	1972	1973	1974	1975	1976	1977	1978
	WEIGHT	1961-65										
DOLLARS			- - - - - 1,000 METRIC TONS - - - - -									
RICE, PADDY	72	3,957	5,233	5,343	5,100	4,408	5,585	5,651	6,159	6,456	6,895	7,049
CCRM	48	1,205	2,008	2,005	2,013	1,831	2,289	2,568	2,767	2,843	2,854	3,200
PULSES	133	30	20	23	24	24	24	23	32	35	35	35
POTATOES	112	14	18	20	22	25	27	25	20	25	25	25
CASSAVA	23	548	506	442	427	440	460	480	679	700	700	725
SWEETPOTATOES	27	738	718	731	657	651	650	806	986	1,000	1,000	1,000
OTHER ROOT CROPS	26	158	160	143	137	127	125	125	138	150	150	150
SUGARCANE	9	14,232	15,550	17,535	23,287	19,941	22,676	26,085	24,596	29,220	28,208	24,360
TOBACCO	240	66	57	61	71	51	76	75	73	83	78	69
PEANUTS, IN SHELL	112	12	15	17	19	19	18	22	36	40	40	40
VEGETABLES	74	177	221	286	277	271	310	375	426	450	450	475
CITRUS FRUIT	67	62	75	71	63	65	65	62	76	80	80	85
BANANAS	23	641	856	500	1,035	1,250	1,013	1,328	1,686	1,150	1,210	1,250
PINEAPPLES	40	152	230	233	365	380	380	333	405	400	450	530
OTHER FRUIT	57	286	308	309	370	370	410	523	596	650	650	650
COFFEE	355	38	44	49	50	51	51	53	62	65	65	65
COCOA BEANS	748	4	4	4	4	3	4	4	4	4	4	4
ABACA	156	114	136	122	105	110	115	126	134	140	140	140
CCPRA	103	1,396	1,516	1,656	1,788	2,170	1,808	1,380	2,206	2,560	2,400	2,450
MEATS	546	322	465	450	469	484	485	478	454	448	451	465
AGGREGATES OF PRODUCTION			- - - - - MILLION DOLLARS AT CONSTANT PRICES - - - - -									
CROPS		767.0	934.0	577.7	1,024.9	986.7	1,088.4	1,116.7	1,270.1	1,375.1	1,381.7	1,384.8
LIVESTOCK		176.0	253.9	245.7	256.1	264.3	264.8	261.0	247.9	244.6	246.2	253.9
TOTAL AGRICULTURE		943.0	1,187.9	1,223.4	1,251.0	1,251.0	1,353.2	1,377.7	1,518.0	1,617.7	1,627.9	1,638.7
TOTAL FOOD		896.1	1,142.1	1,172.4	1,239.8	1,203.5	1,299.0	1,321.2	1,457.6	1,552.9	1,564.3	1,577.2
INDICES OF PRODUCTION			(1961-65 = 100)									
CROPS		100	122	127	135	129	142	146	166	179	180	181
TOTAL AGRICULTURE		100	126	130	137	133	143	146	161	172	173	174
TOTAL FOOD		100	127	131	138	134	145	147	163	173	175	176
PER CAPITA AGRICULTURE		100	196	195	188	182	198	197	115	119	117	115
PER CAPITA FOOD		100	107	106	110	104	109	108	116	121	119	117
INDEX OF POPULATION												
1961-65 POPULATION = 30,532,000		100.0	119.4	123.0	126.3	129.7	133.2	136.8	140.2	143.7	147.3	151.0

TABLE 21 -- SRI LANKA

PRODUCTION BY COMMODITY, VALUE AND INDICES OF TOTAL AGRICULTURAL AND FOOD PRODUCTION, AVERAGE 1961-65, ANNUAL 1969-78

COMMODITY	PRICE	AVERAGE	1969	1970	1971	1972	1973	1974	1975	1976	1977	1978
	WEIGHT	1961-65										
DOLLARS			-1,000 METRIC TONS-									
RICE, PADDY	57	948	1,375	1,617	1,396	1,312	1,312	1,602	1,155	1,253	1,651	1,878
CCRN	34	10	17	16	18	20	15	23	27	35	35	37
MILLET	30	18	20	18	20	21	20	25	17	22	22	22
SORGHUM	30	1	0	0	0	0	0	0	0	0	0	0
CASSAVA	22	313	403	430	445	450	616	707	722	700	750	755
SWEET POTATOES	40	204	66	74	77	80	91	157	160	160	160	165
TOBACCO	400	4	7	10	9	9	9	9	9	9	9	9
SESAME SEED	77	6	6	6	6	6	6	6	6	6	6	6
SPICES	571	39	72	68	67	68	67	68	65	63	65	70
COCOA BEANS	290	2	2	2	2	2	2	2	2	2	2	2
TEA	420	217	220	212	219	215	211	204	214	200	208	206
RUBBER	243	107	151	159	141	138	155	132	149	152	146	154
COFFEE	70	280	201	183	195	190	100	108	170	165	175	180
MEATS	131	29	33	33	34	34	35	37	37	37	37	37
AGGREGATES OF PRODUCTION			- MILLION DOLLARS AT CONSTANT PRICES -									
CROPS		225.9	279.3	290.0	276.7	269.8	269.4	283.7	269.3	268.3	295.9	313.4
LIVESTOCK		1.9	4.3	4.3	4.5	4.5	4.6	4.8	4.8	4.8	4.8	4.8
TOTAL AGRICULTURE		225.8	283.6	294.3	281.2	274.3	274.0	288.5	274.1	273.1	300.7	318.2
TOTAL FOOD		88.6	110.6	123.9	113.0	108.1	105.8	128.3	107.3	112.6	137.1	150.7
INDICES OF PRODUCTION			(1961-65 = 100)									
CROPS		100	124	128	122	119	119	126	119	119	131	139
TOTAL AGRICULTURE		100	123	128	122	119	119	126	119	119	131	138
TOTAL FOOD		100	125	140	128	122	119	145	121	127	155	170
PER CAPITA AGRICULTURE		100	108	110	102	98	96	99	92	90	97	100
PER CAPITA FOOD		100	109	120	107	100	96	114	93	96	115	123
INDEX OF POPULATION			1961-65 POPULATION = 10,579,000									
		100.0	114.3	116.8	119.4	122.1	124.7	127.2	129.8	132.4	135.1	137.8

TABLE 22.--TAIWAN

PRODUCTION BY COMMODITY, VALUE AND INDICES OF TOTAL AGRICULTURAL AND FOOD PRODUCTION, AVERAGE 1961-65, ANNUAL 1969-78

COMMODITY	PRICE	AVERAGE										
	WEIGHT	1961-65	1969	1970	1971	1972	1973	1974	1975	1976	1977	1978
	DOLLARS	-1,000 METRIC TONS-										
WHEAT	96	30	10	4	2	2	1	1	3	1	1	1
RICE, PADDY	88	2,937	3,135	3,583	3,137	3,302	3,057	3,325	3,381	3,678	3,592	3,426
CORN	78	36	45	57	57	71	84	107	138	114	95	110
MILLET	83	6	7	7	7	6	5	7	6	4	4	4
SORGHUM	83	4	6	7	8	15	16	22	19	14	11	14
PULSES	117	18	25	26	21	27	30	27	26	30	39	42
CASSAVA	17	235	316	308	288	324	328	376	279	294	275	250
SWEET POTATOES	16	2,988	3,702	3,441	3,351	2,928	3,204	2,788	2,403	1,851	1,711	1,650
SUGARCANE	6	7,362	7,012	5,591	7,281	7,092	7,474	8,900	7,687	8,728	11,063	9,900
TOBACCO	487	17	21	21	17	16	18	17	18	26	25	23
JUTE	199	12	13	8	2	1	1	1	1	1	1	1
SOYBEANS	143	57	67	65	61	60	61	67	62	53	52	55
PEANUTS, IN SHELL	156	107	101	122	98	94	98	94	91	89	79	80
SESAME SEED	218	3	3	2	2	2	2	2	1	1	1	1
CITRONELLA OIL	1,500	3	1	1	1	1	1	1	1	1	1	1
VEGETABLES	28	902	1,465	1,685	1,765	1,704	1,881	1,939	2,226	2,390	2,550	2,575
CITRUS FRUIT	93	83	170	209	253	291	332	361	348	384	357	375
BANANAS	63	225	586	462	471	366	423	333	197	213	183	200
PINEAPPLES	29	197	325	338	358	334	328	308	319	279	281	290
OTHER FRUIT	55	80	170	208	278	271	345	445	382	499	440	460
TEA	394	20	26	28	27	26	29	24	26	25	27	27
MEATS	537	262	415	461	468	507	597	540	550	674	703	710
AGGREGATES OF PRODUCTION		-MILLION DOLLARS AT CONSTANT PRICES-										
CROPS		467.8	554.2	590.4	564.5	562.5	567.6	597.5	584.3	622.2	620.7	605.1
LIVESTOCK		140.8	222.9	247.6	251.3	272.3	320.6	298.0	295.4	361.9	377.5	381.3
TOTAL AGRICULTURE		608.6	777.1	838.0	815.8	834.8	888.2	887.5	879.7	984.1	998.2	986.4
TOTAL FOOD		590.3	754.1	815.2	796.5	816.6	867.8	869.5	860.5	961.3	975.2	963.4
INDICES OF PRODUCTION		{1961-65 = 100}										
CROPS		100	118	126	121	120	121	128	125	133	133	129
TOTAL AGRICULTURE		100	128	138	134	137	146	146	145	162	164	162
TOTAL FOOD		100	126	132	135	138	147	147	146	163	165	163
PER CAPITA AGRICULTURE		100	108	113	107	108	112	110	107	117	117	113
PER CAPITA FOOD		100	108	113	108	109	113	111	108	118	118	114
INDEX OF POPULATION		1961-65 POPULATION = 11,880,000										
		100.0	118.8	122.3	124.9	127.4	129.9	132.4	135.0	137.7	140.4	143.2

TABLE 23.--THAILAND

PRODUCTION BY COMMODITY, VALUE AND INDICES OF TOTAL AGRICULTURAL AND FOOD PRODUCTION, AVERAGE 1961-65, ANNUAL 1969-78

COMMODITY	PRICE	AVERAGE										
	WEIGHT	1961-65	1969	1970	1971	1972	1973	1974	1975	1976	1977	1978
	DOLLARS	-1,000 METRIC TONS-										
RICE, PADDY	39	11,158	13,410	13,576	13,744	12,219	14,350	14,500	15,200	15,760	15,000	16,600
CORN	44	815	1,700	1,938	2,300	1,315	2,350	2,450	3,050	2,750	2,050	3,300
SCRGHLW	38	20	75	100	135	120	179	280	339	250	200	230
PLLSES	99	89	152	148	250	300	275	280	300	300	300	320
CASSAVA	11	1,789	3,079	3,431	3,431	3,800	4,750	4,050	4,200	4,800	5,000	6,300
SUGARCANE	5	4,285	5,909	6,620	6,731	9,513	12,700	14,560	13,400	19,000	26,400	18,600
TOBACCO	332	59	52	95	99	99	48	53	62	67	66	68
COTTON	138	16	15	9	32	21	17	19	22	27	22	27
JUTE	124	8	5	6	6	6	6	6	7	7	7	7
KENAF	117	303	373	390	370	432	640	400	250	180	270	300
COTTONSEED	39	32	29	18	64	42	34	43	32	44	52	53
SCYBEANS	59	27	61	70	67	70	100	115	140	114	98	125
PEANUTS, IA SHELL	91	117	124	125	134	153	147	161	142	160	175	170
SESAME SEED	192	15	19	20	30	20	29	31	17	21	22	23
CASTOR BEANS	94	40	37	43	53	36	30	42	35	43	45	50
RUBBER	332	201	282	287	316	337	412	360	380	380	425	425
COPRA	219	202	202	202	202	202	250	250	270	270	270	290
AGGREGATES OF PRODUCTION		-MILLION DOLLARS AT CONSTANT PRICES-										
CROPS		712.2	919.2	949.1	1,001.0	930.8	1,131.0	1,108.4	1,155.0	1,191.4	1,191.1	1,277.9
LIVESTOCK		0.0	0.0	0.0	0.0	0.0	0.0	0.0	0.0	0.0	0.0	0.0
TOTAL AGRICULTURE		712.2	919.2	949.1	1,001.0	930.8	1,131.0	1,108.4	1,155.0	1,191.4	1,191.1	1,277.9
TOTAL FOOD		582.2	745.2	770.8	809.8	728.5	897.6	917.3	971.7	1,013.3	988.4	1,069.8
INDICES OF PRODUCTION		(1961-65 = 100)										
CROPS		100	129	133	141	131	159	156	162	167	167	179
TOTAL AGRICULTURE		100	129	133	141	131	159	156	162	167	167	179
TOTAL FOOD		100	128	132	139	125	154	157	167	174	169	183
PER CAPITA AGRICULTURE		100	109	109	111	101	119	114	116	117	114	120
PER CAPITA FOOD		100	108	108	110	96	115	115	119	121	116	123
INDEX OF POPULATION		1961-65 POPULATION = 29,874,000										
		100.0	118.7	122.3	126.2	130.0	133.6	137.1	140.4	143.5	146.6	149.9

UNITED STATES DEPARTMENT OF AGRICULTURE
WASHINGTON, D.C. 20250

POSTAGE AND FEES PAID
U.S. DEPARTMENT OF
AGRICULTURE
AGR 101
THIRD CLASS



END