



**AgEcon** SEARCH  
RESEARCH IN AGRICULTURAL & APPLIED ECONOMICS

*The World's Largest Open Access Agricultural & Applied Economics Digital Library*

**This document is discoverable and free to researchers across the globe due to the work of AgEcon Search.**

**Help ensure our sustainability.**

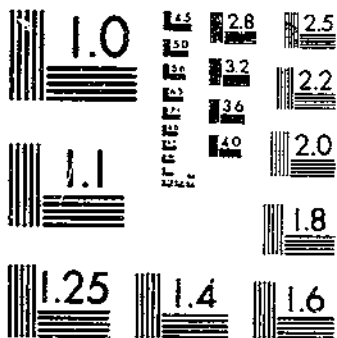
Give to AgEcon Search

AgEcon Search  
<http://ageconsearch.umn.edu>  
[aesearch@umn.edu](mailto:aesearch@umn.edu)

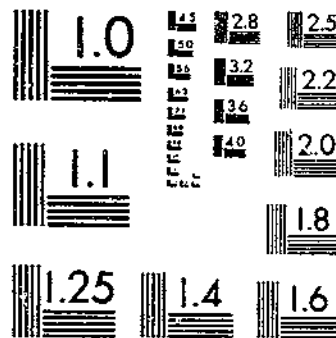
*Papers downloaded from **AgEcon Search** may be used for non-commercial purposes and personal study only. No other use, including posting to another Internet site, is permitted without permission from the copyright owner (not AgEcon Search), or as allowed under the provisions of Fair Use, U.S. Copyright Act, Title 17 U.S.C.*

SB 545 (1975) USDA STATISTICAL BULLETINS 1961-65 1965-74  
INDICES OF AGRICULTURAL PRODUCTION FOR THE FAR EAST AND 1 OF 1  
UP DATA

# START



MICROCOPY RESOLUTION TEST CHART  
NATIONAL BUREAU OF STANDARDS-1963-A



MICROCOPY RESOLUTION TEST CHART  
NATIONAL BUREAU OF STANDARDS-1963-A

R  
600,5  
450-10  
# 2

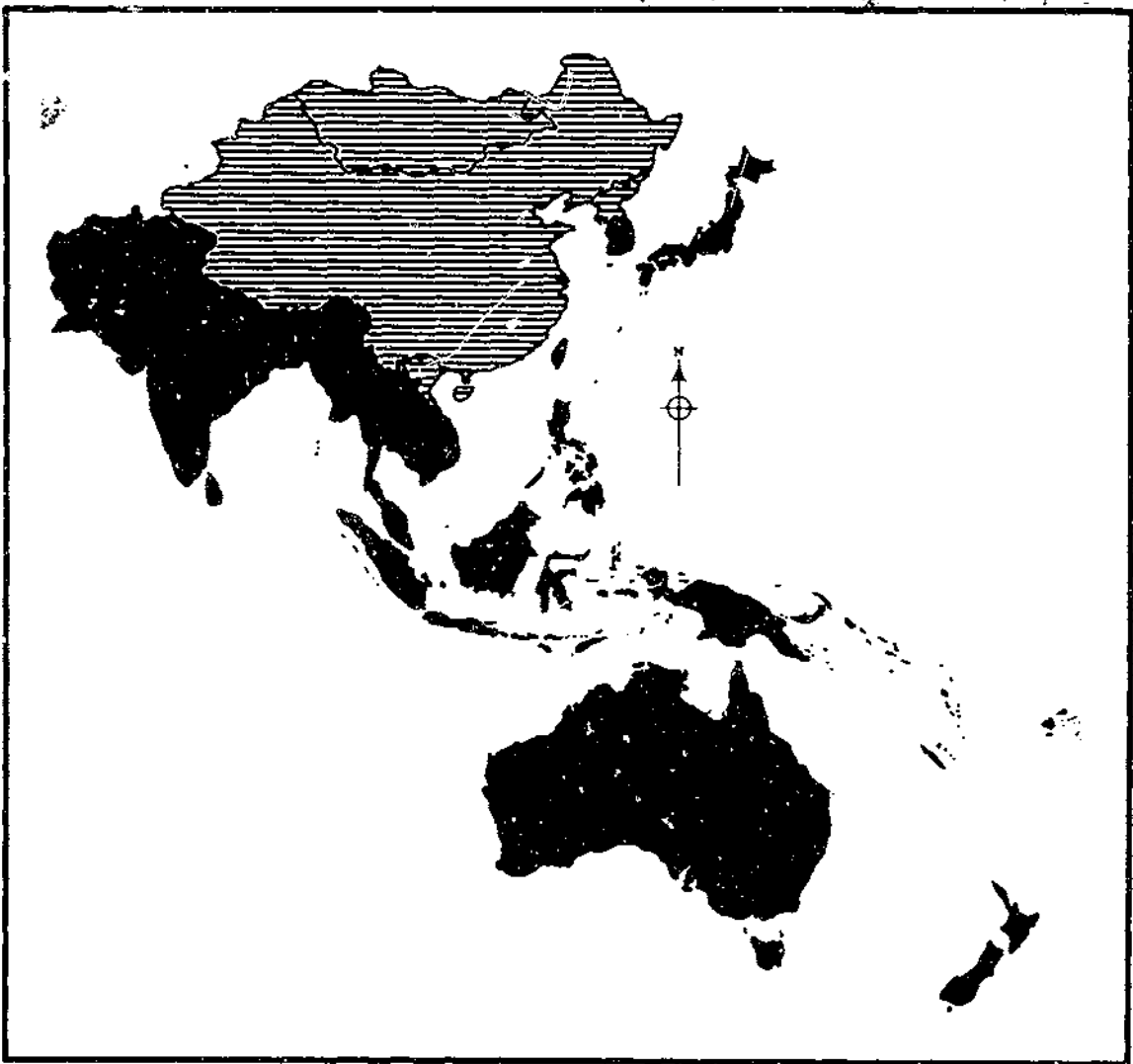
69

REFERENCE  
DO NOT LOAN

STATISTICAL BULLETIN NO.545

# Indices of Agricultural Production for the Far East and Oceania, Average 1961-65 and Annual 1965-74

1965-74 45-10



ECONOMIC RESEARCH SERVICE  
UNITED STATES DEPARTMENT OF AGRICULTURE

JAN 11 1977

© UPDATA 1981

LIST OF TABLES

<u>Table</u>		<u>Page</u>
<u>Summary tables</u>		
1	Far East and Oceania: Mid-year population by country, 1965-74. . . . .	1
2	Far East: Production of selected agricultural products, 1965-74. . . . .	3
3	Oceania: Production of selected agricultural products, 1965-74. . . . .	4
4	Far East and Oceania: Indices of total agricultural production by country, 1965-74 . . . . .	5
5	Far East and Oceania: Indices of per capita agricultural production by country, 1965-74 . . . . .	6
6	Far East and Oceania: Indices of total food production by country, 1965-74. . . . .	7
7	Far East and Oceania: Indices of per capita food production by country, 1965-74. . . . .	8
8	Far East and Oceania: Aggregates of total agricultural production by country, 1965-74. . . . .	9
9	Far East and Oceania: Aggregates of total food production by country, 1965-74. . . . .	10
 <u>Country Tables: Production by commodity, value and indices of total agricultural and food products, 1965-74</u>		
10	Australia . . . . .	11
11	Bangladesh. . . . .	12
12	Burma . . . . .	13
13	India . . . . .	14
14	Indonesia . . . . .	15
15	Japan . . . . .	16
16	Khmer Republic (Cambodia) . . . . .	17
17	Korea, Republic of. . . . .	18
18	Malaysia. . . . .	19
19	New Zealand . . . . .	20
20	Pakistan. . . . .	21
21	Philippines . . . . .	22
22	Sri Lanka (Ceylon). . . . .	23
23	Taiwan. . . . .	24
24	Thailand. . . . .	25
25	Vietnam, Republic of. . . . .	26

## INDICES OF AGRICULTURAL PRODUCTION FOR THE FAR EAST AND OCEANIA

Asia Program Area  
Foreign Demand and Competition Division  
Economic Research Service

### INTRODUCTION

Indices of agricultural production in foreign countries have been prepared since World War II as part of a continuing assessment of the current agricultural situation abroad. During and immediately after the war the effort was focused on Europe. Since the middle 1950's special attention has been given to the less developed countries because of an arrangement with the Agency for International Development whereby the Department of Agriculture prepares annual reports on the volume of agricultural production in most countries which are aid recipients.

The indices presented on the following pages are constructed from production series given in metric tons, extending from 1965 through 1974 inclusive. To the extent possible, commodities were combined on a calendar year basis. Calendar year production includes crops harvested during the spring, summer and autumn of 1965 (for example) and includes some crops such as rice, where the bulk of the crop is harvested in 1965, but continued into the early part of 1966. The base period is the average of the calendar years 1961-65.

Country Indices. Country indices are calculated with Laspeyres' base-weighted aggregate formula. Estimated base-period average prices received by farmers, expressed in U.S. dollars per metric ton are used for weighting. When farm prices were not available it was necessary to use wholesale or export prices, adjusting to make them comparable to farm level.

Sources of Data. These indices are based on statistics of widely differing reliability. For most commodities, forecasts of production in the current year are published by Foreign Agricultural Service. These forecasts cover the major producing countries and are subsequently revised by the governments concerned or by FAS. For other commodities (e.g. millet, sorghum, bananas, and cassava), FAS does not publish production statistics and ERS must rely on other sources, such as FAO and foreign governments, for historical data and on estimates, based largely on trends, for the current year. Statistics of livestock products are generally less reliable than figures for output of the principal commercial crops. All production figures are based on the latest information available to this office as of April 1975.

Regional Indices. Indices of agricultural production are computed for three regions: South Asia, East Asia, and Oceania and totals for each region are included in the tables. Several smaller countries are omitted from the calculations for lack of data. The formula for the regional indices is a weighted-aggregate type, the regional aggregates being the sums of the country aggregates. This method is biased in favor of countries with relatively comprehensive commodity coverage or relatively high price weights, but the bias is not serious enough to offset the advantage of great flexibility in the grouping of countries into various alternative regions and subregions.

Commodity Coverage. In the country indices all major cash crops and subsistence crops are included if current estimates of their production are obtainable. Hay and other crops grown for feeding on the farm are omitted. Outputs of milk, eggs, poultry meat, wool, honey, and fur skins, if significant, are included to the extent permitted by the quality of the data. Production of meat animals is represented for most countries by estimates of meat production.

Commodity prices. Prices of agricultural commodities are generally reported in local currencies. Converting to U.S. dollars poses a problem. The currencies of many less developed countries are overvalued in varying degrees in the base-period years 1961-65. To convert with exchange rates at par value would give an unrealistic schedule of prices in U.S. dollars. Prices would be too high in proportion to the extent of currency depreciation. This would not affect the computation of an index for a given country, but it would cause difficulty when combining production of several countries to obtain a regional index. Thus, conversion of prices to U.S. dollars, using free market exchange rates rather than official rates, offers a more standard basis for regional analysis. For this reason prices in countries included in this publication are converted to U.S. dollars using free market rates reported at Hong Kong. The exchange rates employed are gathered on a monthly basis and averaged over the 5-year 1961-65 base period.

Feed Deduction. For Australia and Japan, the indices of agricultural production regard agriculture as consisting essentially of two farms, one with no livestock which produces only crops and one with grazing land but no crops except hay and forage crops which produces livestock products from pasture and forage, and from feed purchases either from the domestic crop farm or from abroad. Aggregates are shown separately for crops and livestock, referring to the gross output of these two farms. When these two aggregates are combined, a deduction is made for livestock feed to avoid double counting of feed and the livestock products produced from it. This deduction is a fixed percentage of the livestock aggregates and represents the feed purchased by the national livestock farm.

The fixed percentage deduction for feed was derived by dividing the feed bill for the base period (1961-65) by the gross value of livestock output in the same years. The feed bill for the base period was calculated by applying to the grains, potatoes, and other crops fed, the prices received by farmers, with no markup for transportation or compounding. In the case of byproduct feeds, such as bran, oilcake, molasses, and brewers' grains, estimates of prices paid by farmers were used.

Food Production Indices. Index numbers of food production are computed for all countries and for regions. They are derived from the index numbers of agricultural production and differ only by the exclusion of inedible commodities and of coffee, tea, and spices.

#### COMMODITIES CLASSIFIED AS FOOD

##### Cereals

Rice, paddy  
Wheat  
Millet and sorghum  
Barley  
Corn  
Other grains

##### Vegetables and Tubers

White potatoes  
Sweet potatoes  
Cassava  
Onions  
Chillies  
Other vegetables

##### Fruits

Bananas  
Pineapple  
Citrus  
Grapes  
Apples  
Pears  
Other fruit

##### Oilseeds and Oils

Copra  
Peanuts  
Cottonseed  
Rape and mustard seed  
Soybeans  
Sesame  
Palm oil  
Palm kernel

##### Livestock Products

Milk  
Eggs  
Meat

##### Pulses

Chickpeas  
Pigeon peas  
Other pulses

##### Sugar

Sugarcane  
Sugar beets  
Honey

##### Other

Cocoa

TABLE 1--FAR EAST AND OCEANIA: MID-YEAR POPULATION BY COUNTRY, 1965-74

COUNTRY AND REGION	1965	1966	1967	1968	1969	1970	1971	1972	1973	1974	Growth Rate <sup>1/</sup>
----- THOUSANDS -----											
BANGLADESH	62,560	64,250	65,990	67,780	69,600	70,990	72,830	74,370	76,410	78,470	2.5
CEYLON	11,110	11,370	11,620	11,890	12,140	12,390	12,640	12,920	13,200	13,500	2.2
INDIA	505,980	517,230	528,740	540,500	552,520	564,810	577,370	590,220	603,210	616,480	2.2
PAKISTAN	52,090	53,550	55,070	56,650	58,270	59,970	61,720	63,530	65,400	67,330	2.9
TOTAL 4 COUNTRIES	631,740	646,400	661,420	676,820	692,530	708,160	724,560	741,040	758,220	775,780	2.3
BURMA	24,730	25,270	25,820	26,390	26,980	27,590	28,220	28,900	29,550	30,230	2.2
INDONESIA	105,710	108,250	110,850	113,660	116,650	119,720	123,020	126,390	129,850	133,360	2.6
JAPAN	98,880	99,790	100,820	101,950	103,160	104,330	105,600	106,960	108,140	109,440	1.1
KHMER REPUBLIC	6,200	6,370	6,540	6,720	6,910	7,110	7,320	7,550	7,770	8,000	2.8
KOREA, REPUBLIC OF	28,470	29,190	29,860	30,520	31,200	31,820	32,420	33,090	33,780	34,460	2.1
MALAYSIA	8,040	8,300	8,540	8,770	9,000	9,260	9,520	9,790	10,050	10,330	2.8
PHILIPPINES	32,360	33,430	34,530	35,680	36,870	38,110	39,400	40,730	42,060	43,410	3.3
TAIWAN	12,650	13,020	13,370	13,680	14,100	14,500	14,830	15,130	15,430	15,720	2.4
THAILAND	31,600	32,630	33,690	34,780	35,950	37,160	38,400	39,700	41,050	42,450	3.3
VIET NAM, REPUBLIC OF	16,120	16,540	16,970	17,410	17,870	18,330	18,810	19,300	19,800	20,320	2.6
TOTAL 10 COUNTRIES	364,760	372,790	380,990	389,560	398,690	407,930	417,540	427,540	437,480	447,720	2.3
TOTAL EXCLUDING JAPAN	265,880	273,000	280,170	287,610	295,530	303,600	311,940	320,580	329,340	338,280	2.7
TOTAL 14 COUNTRIES	996,500	1,019,190	1,042,410	1,066,380	1,091,220	1,116,090	1,142,100	1,168,580	1,195,700	1,223,500	2.3
TOTAL EXCLUDING JAPAN	897,620	919,400	941,590	964,430	988,060	1,011,760	1,036,500	1,061,620	1,087,560	1,114,050	2.4
AUSTRALIA	11,398	11,600	11,800	12,010	12,260	12,510	12,760	12,960	13,130	13,300	1.7
NEW ZEALAND	2,630	2,677	2,727	2,751	2,777	2,810	2,850	2,900	2,960	3,020	1.5
TOTAL 2 COUNTRIES	14,018	14,277	14,527	14,761	15,037	15,320	15,610	15,860	16,090	16,320	1.7

<sup>1/</sup> Compound Rate 1965-74



C  
 UPDATA  
 1981

TABLE 2--FAR EAST: PRODUCTION OF SELECTED AGRICULTURAL PRODUCTS, 1965-74

COMMODITY	AVERAGE 1961-65	1965	1966	1967	1968	1969	1970	1971	1972	1973	1974
- - - - - 1,000 METRIC TONS - - - - -											
WHEAT	17,059	18,566	15,811	17,184	24,442	26,521	28,360	31,224	33,956	33,049	30,446
RICE, PADDY	138,081	132,775	133,886	151,089	155,449	163,106	165,182	164,181	154,051	172,223	168,172
MILLET AND SORGHUM	191	167	157	125	172	143	112	102	102	95	98
MILLET	452	411	411	439	373	355	413	353	409	401	375
SORGHUM	9,106	7,855	9,501	10,339	10,066	10,004	8,434	8,034	7,270	9,370	8,450
MILLET, RAJRA	3,953	3,752	4,468	5,185	3,802	5,327	8,029	5,319	3,929	7,086	4,200
MILLET, RAGI	1,897	1,327	1,631	1,884	1,648	2,117	2,155	2,208	1,923	2,131	2,000
MILLET, SMALL	1,880	1,555	1,488	1,907	1,864	1,732	1,988	1,669	1,552	1,964	1,600
COBN	10,466	10,529	12,107	12,532	13,162	12,708	15,395	13,024	12,854	14,017	14,282
BARLEY	5,533	5,693	5,600	5,399	6,732	5,419	5,386	5,261	4,991	4,497	4,418
OTHER GRAINS	230	215	184	166	162	128	109	100	92	82	56
PULSES	770	764	703	767	795	785	774	752	902	903	924
CHICKPEAS	6,211	6,485	4,808	4,306	6,500	4,892	6,115	5,754	5,666	5,208	4,659
PIGEON PEA	1,668	1,890	1,733	1,130	1,741	1,816	1,842	1,883	1,683	1,928	1,364
OTHER PULSFS	4,512	4,749	3,987	3,595	4,390	4,293	4,303	4,736	4,330	3,442	4,384
POTATOES	7,340	8,293	8,185	7,771	8,959	8,954	8,190	8,730	9,015	8,416	8,104
CASSAVA	17,309	18,626	18,038	18,107	20,129	20,207	20,492	19,548	20,050	21,183	21,977
SWEETPOTATOS	16,170	16,028	15,583	14,019	14,189	14,587	13,751	12,281	11,565	11,484	10,745
OTHER ROOT CROPS	158	166	156	152	151	160	143	137	127	125	125
SUGARCANE	164,869	190,410	194,089	163,607	165,398	195,060	213,093	208,449	188,345	210,909	226,998
SUGAR BEETS	1,323	1,815	1,639	1,984	2,110	2,075	2,324	2,205	2,759	2,948	2,100
TOBACCO	922	1,017	1,029	1,140	1,131	1,078	1,033	1,060	1,123	1,076	1,157
COTTON	1,459	1,456	1,504	1,717	1,646	1,624	1,545	2,059	1,878	1,815	1,900
JUTE	2,171	1,997	2,183	2,420	1,609	2,360	2,179	1,965	2,108	2,232	1,575
KENAF	303	529	661	421	316	373	390	410	435	570	400
COTTONSEED	2,914	2,910	3,024	3,399	3,299	3,248	3,090	4,162	3,757	3,703	3,850
FLAXSEED	445	506	343	272	449	339	480	464	542	437	480
SOYBEANS	957	908	893	949	962	897	997	970	1,022	977	1,151
PEANUTS, IN SHLL	6,211	5,389	5,636	6,947	5,910	6,387	7,506	7,538	5,524	7,270	6,546
RAPESEED	1,774	1,906	1,672	1,614	2,032	1,753	1,977	2,396	1,865	2,234	2,106
SESAME SEED	585	549	544	630	585	527	770	624	555	656	648
CASTOR BEANS	147	138	122	148	160	153	166	171	179	185	277
CITRONEILLA OIL	3	3	3	2	1	1	1	1	1	1	1
VEGETABLES	14,836	16,231	17,294	17,800	19,353	19,534	18,784	19,678	19,530	19,103	19,432
CITRUS FRUIT	1,456	1,824	2,301	2,177	2,992	2,761	3,191	3,271	4,350	4,306	4,374
APPLES	1,186	1,299	1,233	1,315	1,335	1,304	1,233	1,226	1,189	1,252	1,224
PEARS	360	400	445	488	523	535	516	488	513	546	569
PEACHES	30	54	63	71	72	68	78	70	72	84	70
PFNSIMMONS	400	370	441	528	485	478	373	326	332	380	325
BANANAS	1,377	1,683	1,714	1,842	1,806	1,888	1,751	1,871	1,994	1,800	1,959

CONTINUED ---

TABLE 2--FAR EAST: PRODUCTION OF SELECTED AGRICULTURAL PRODUCTS, 1965-74 -- CONTINUED

COMMODITY	AVERAGE 1961-65	1965	1966	1967	1968	1969	1970	1971	1972	1973	1974
	-----1,000 METRIC TONS-----										
PINEAPPLES	554	665	716	784	820	869	854	991	969	950	971
OTHER FRUIT	1,415	1,525	1,620	1,746	1,792	1,724	1,721	1,828	1,809	2,011	2,227
SPICES	39	39	43	51	47	72	68	67	68	67	68
PEPPER	2	2	2	3	2	2	2	2	2	2	2
COFFEE	197	212	242	256	263	300	309	360	308	341	343
COCOA BEANS	6	6	7	7	6	6	6	6	5	6	6
TEA	796	826	840	838	816	842	866	881	910	935	931
RUBBER	1,917	2,080	2,146	2,236	2,354	2,589	2,624	2,719	2,775	3,126	3,066
ARACA	114	108	113	103	103	106	122	105	110	115	125
KAPOK	32	32	33	34	30	32	32	33	32	33	33
HEMP FIBER	6	6	6	6	6	7	7	5	6	4	4
PALM OIL	270	306	360	391	453	515	616	799	928	1,029	1,189
COPRA	3,303	3,413	3,383	3,082	3,241	3,172	3,294	3,520	3,960	3,444	2,978
PALM KERNELS	63	68	78	84	100	117	135	175	196	247	270
MEATS	614	693	768	829	860	913	944	971	1,025	1,094	1,063
BEEF AND VEAL	228	259	184	192	207	247	309	321	337	280	339
PORK	318	420	583	624	616	545	690	784	863	923	1,015
POULTRY MEAT	148	204	240	292	328	400	487	537	639	705	730
OTHER MEAT	23	18	14	15	16	13	11	10	7	6	5
MILK	2,729	3,236	3,421	3,579	4,030	4,523	4,776	4,833	4,952	4,927	4,876
EGGS	882	1,036	1,087	1,296	1,373	1,607	1,734	1,806	1,795	1,805	1,780

TABLE 3--OCEANIA: PRODUCTION OF SELECTED AGRICULTURAL PRODUCTS, 1965-74

COMMODITY	AVERAGE	1965	1966	1967	1968	1969	1970	1971	1972	1973	1974
	1961-65										
-1,000 METRIC TONS-											
WHEAT	8,469	7,317	12,901	7,895	15,246	11,003	8,177	8,836	6,823	12,472	11,954
RICE, PADDY	136	153	182	214	221	256	247	299	248	309	409
SORGHUM	221	195	195	319	288	294	547	1,298	1,228	1,018	1,113
CORN	192	199	144	208	217	201	251	313	330	241	235
BARLFY	1,076	1,055	1,511	969	1,865	1,932	2,525	3,324	2,063	2,661	3,115
OATS	1,206	1,147	1,987	747	1,755	1,298	1,671	1,335	786	1,156	1,150
PULSES	25	24	29	32	36	57	50	52	58	59	60
POTATOES	755	763	884	840	905	1,067	1,015	957	1,042	931	911
ONIONS	21	19	22	24	24	30	26	24	26	27	27
SUGARCANE	12,936	14,382	16,953	17,025	18,412	15,784	17,645	19,391	18,928	19,278	20,601
TOBACCO	16	15	15	16	14	18	20	20	19	18	18
COTTON	8	20	20	36	33	28	20	44	31	30	40
FLAXSEED	24	6	14	11	20	37	31	10	11	14	32
PEANUTS, IN SHELL	18	11	28	42	31	17	43	31	46	38	29
VEGETABLES	601	656	671	766	671	745	800	852	957	893	820
GRASS SEED	38	41	43	53	38	50	42	61	34	44	45
CITRUS FRUIT	241	236	277	267	315	291	384	363	424	359	407
APPLES	426	452	485	478	487	529	559	557	509	556	488
PEARS	139	137	170	150	170	124	209	208	202	183	182
APRICOTS	38	43	39	52	33	44	39	53	32	28	30
PEACHES	97	120	133	143	150	131	138	147	140	140	105
BANANAS	126	119	124	131	125	132	130	128	124	128	120
PINEAPPLES	83	94	115	130	121	120	141	154	126	129	128
GRAPES	600	691	591	695	639	553	758	549	832	598	614
BEEF AND VEAL	1,220	1,222	1,171	1,206	1,280	1,306	1,441	1,560	1,849	1,751	1,748
MUTTON AND LAMB	1,070	1,084	1,065	1,186	1,246	1,318	1,388	1,520	1,282	1,019	992
PORK	16	175	183	187	200	211	221	238	281	250	221
POULTRY MEAT	7	8	9	11	10	10	12	17	19	20	22
MILK	12,481	13,100	13,610	13,203	13,465	14,164	13,411	13,212	13,480	13,051	12,383
WOOL, GREASY BASIS	1,065	1,069	1,121	1,133	1,216	1,251	1,220	1,202	1,045	988	1,087
EGGS	189	201	211	224	229	233	247	239	226	221	226

TABLE 4 -- FAR EAST AND OCEANIA

INDICES OF TOTAL AGRICULTURAL PRODUCTION, BY COUNTRY, 1965-74

(1961-65 = 100)

	1965	1966	1967	1968	1969	1970	1971	1972	1973	PRELIM. 1974
BANGLADESH	105	99	114	113	121	114	104	104	121	119
SRI LANKA	102	102	110	109	122	124	128	120	116	122
INDIA	96	95	104	111	117	125	127	119	128	119
PAKISTAN	110	113	124	139	149	158	157	155	165	160
TOTAL 4 COUNTRIES	98	97	106	113	119	126	127	120	130	122
BURMA	96	89	101	101	103	105	104	99	111	103
INDONESIA	103	110	104	112	113	125	128	125	135	143
JAPAN	103	106	115	119	115	109	102	110	110	110
KHMER REPUBLIC	98	101	129	105	145	102	86	46	37	34
KOREA, REPUBLIC OF	111	121	113	114	130	129	129	135	138	143
MALAYSIA, WEST	110	115	118	133	149	156	169	170	196	202
PHILIPPINES	109	111	111	117	126	130	137	133	142	146
TAIWAN	113	118	125	130	128	134	134	137	147	147
THAILAND	110	130	126	126	134	139	144	131	163	163
VIET NAM, REPUBLIC OF	96	86	91	84	94	103	113	113	122	129
TOTAL 10 COUNTRIES	105	110	114	119	120	119	117	120	126	128
TOTAL EXCLUDING JAPAN	107	114	113	117	125	130	134	132	144	148
TOTAL 14 COUNTRIES	102	104	110	115	119	122	122	120	128	125
TOTAL EXCLUDING JAPAN	102	103	109	114	121	127	129	124	135	131
AUSTRALIA	99	115	105	125	121	120	125	113	118	121
NEW ZEALAND	107	109	113	119	120	117	118	120	117	115
TOTAL 2 COUNTRIES	101	114	107	124	121	119	123	115	118	119

TABLE 5 -- FAR EAST AND OCEANIA

INDICES OF PER CAPITA AGRICULTURAL PRODUCTION, BY COUNTRY, 1965-74

(1961-65 = 100)

	1965	1966	1967	1968	1969	1970	1971	1972	1973	PRELIM. 1974
BANGLADESH	100	92	103	99	103	95	85	83	94	90
SRI LANKA	97	95	100	97	107	106	107	99	93	96
INDIA	92	89	95	99	103	107	107	98	103	93
PAKISTAN	104	104	111	121	126	130	125	120	124	117
TOTAL 4 COUNTRIES	94	91	97	101	104	107	106	98	104	95
BURMA	92	83	93	91	90	90	87	81	89	81
INDONESIA	98	103	95	99	98	105	105	100	105	108
JAPAN	101	103	110	113	108	101	94	100	98	97
KHMER REPUBLIC	93	94	116	92	124	85	69	36	28	25
KOREA, REPUBLIC OF	105	112	102	101	113	110	108	110	111	112
MALAYSIA, WEST	104	105	105	115	126	128	135	132	148	148
PHILIPPINES	102	101	97	99	104	103	105	99	102	102
TAIWAN	106	108	111	113	108	110	108	108	113	111
THAILAND	103	118	111	108	111	111	111	98	118	114
VIET NAM, REPUBLIC OF	91	80	82	74	81	86	92	90	94	97
TOTAL 10 COUNTRIES	101	103	105	106	105	102	98	98	101	100
TOTAL EXCLUDING JAPAN	102	105	102	103	107	108	108	104	110	110
TOTAL 14 COUNTRIES	98	97	101	103	104	104	102	98	102	97
TOTAL EXCLUDING JAPAN	97	96	99	101	105	107	107	100	106	101
AUSTRALIA	95	109	97	114	108	105	107	96	98	100
NEW ZEALAND	103	103	105	110	109	105	105	105	100	96
TOTAL 2 COUNTRIES	97	108	99	113	109	105	106	98	99	98

TABLE 6 -- FAR EAST AND OCEANIA

INDICES OF TOTAL FOOD PRODUCTION, BY COUNTRY, 1965-74

(1961-65 = 100)

	1965	1966	1967	1968	1969	1970	1971	1972	1973	PRELIM. 1974
BANGLADESH	106	98	114	115	122	114	107	104	123	124
SRI LANKA	97	93	107	120	122	130	141	123	111	131
INDIA	96	95	103	112	118	127	127	118	129	119
PAKISTAN	110	110	119	137	150	160	152	152	169	160
TOTAL 4 COUNTRIES	98	96	105	114	120	128	127	119	131	122
BURMA	96	90	101	100	103	105	104	99	111	104
INDONESIA	102	108	101	113	113	126	129	125	137	148
JAPAN	103	106	115	119	115	110	103	110	110	110
KHMER REPUBLIC	96	99	129	102	149	109	87	40	29	28
KOREA, REPUBLIC OF	110	119	112	112	129	129	128	130	133	139
MALAYSIA, WEST	110	109	112	129	141	156	178	189	204	222
PHILIPPINES	109	111	111	118	127	131	138	134	143	146
TAIWAN	113	119	126	130	128	135	135	139	148	149
THAILAND	105	127	127	126	134	139	143	125	159	164
VIET NAM, REPUBLIC OF	96	88	93	86	98	108	118	120	127	137
TOTAL 10 COUNTRIES	104	109	113	118	119	119	116	119	124	127
TOTAL EXCLUDING JAPAN	106	113	111	116	124	129	133	129	140	146
TOTAL 14 COUNTRIES	102	103	110	116	119	123	121	119	127	124
TOTAL EXCLUDING JAPAN	101	102	107	115	121	128	129	123	134	130
AUSTRALIA	99	121	105	131	121	122	130	122	131	130
NEW ZEALAND	106	108	113	120	122	118	120	126	123	117
TOTAL 2 COUNTRIES	101	117	107	128	122	120	127	123	129	126

TABLE 7 — FAR EAST AND OCEANIA

INDICES OF PER CAPITA FOOD PRODUCTION, BY COUNTRY, 1965-74

(1961-65 = 100)

	1965	1966	1967	1968	1969	1970	1971	1972	1973	PRELIM. 1974
BANGLADESH	101	91	103	101	104	95	87	83	96	94
SRI LANKA	93	87	98	107	107	111	118	101	89	103
INDIA	92	89	94	100	103	109	107	97	104	93
PAKISTAN	104	101	107	119	127	132	122	118	127	117
TOTAL 4 COUNTRIES	94	90	96	102	105	109	106	97	104	95
BURMA	92	84	93	90	90	90	87	81	89	81
INDONESIA	97	101	92	100	98	106	106	100	106	112
JAPAN	101	103	110	113	108	102	94	100	98	97
KHMER REPUBLIC	91	92	116	90	127	91	70	31	22	21
KOREA, REPUBLIC OF	105	110	101	99	112	110	107	106	107	109
MALAYSIA, WEST	104	100	100	112	119	128	142	147	154	163
PHILIPPINES	102	101	97	100	104	104	106	100	103	102
TAIWAN	106	109	112	113	108	111	108	109	114	113
THAILAND	99	116	112	108	111	111	111	94	115	115
VIET NAM, REPUBLIC OF	91	81	84	76	84	90	96	95	98	103
TOTAL 13 COUNTRIES	100	102	104	106	104	102	97	97	99	99
TOTAL EXCLUDING JAPAN	101	104	100	102	106	107	108	102	107	109
TOTAL 14 COUNTRIES	98	96	101	104	104	105	101	97	101	97
TOTAL EXCLUDING JAPAN	96	95	97	102	105	108	107	99	106	100
AUSTRALIA	95	114	97	119	108	107	112	103	109	107
NEW ZEALAND	102	102	105	110	111	106	107	110	105	98
TOTAL 2 COUNTRIES	97	111	99	117	109	106	110	105	108	104

TABLE 8 -- FAR EAST AND OCEANIA

AGGREGATES OF TOTAL AGRICULTURAL PRODUCTION, BY COUNTRY, AVERAGE 1961-65, ANNUAL 1965-74

	AVERAGE 1961-65	1965	1966	1967	1968	1969	1970	1971	1972	1973	PRELIM. 1974
-----MILLION DOLLARS AT CONSTANT PRICES-----											
BANGLADESH	1,097.4	1,155.0	1,088.1	1,250.4	1,244.0	1,329.5	1,249.1	1,143.2	1,143.1	1,324.1	1,310.5
SRI LANKA	232.2	236.2	236.0	256.3	253.4	283.5	288.4	296.1	277.9	269.2	284.1
INDIA	8,494.1	8,196.3	8,088.4	8,929.0	9,395.1	9,899.6	10,590.2	10,769.3	10,068.4	10,882.0	10,120.9
PAKISTAN	721.3	794.8	815.8	893.2	1,003.0	1,076.9	1,143.0	1,130.9	1,120.1	1,192.0	1,150.6
TOTAL 4 COUNTRIES	10,545.0	10,382.3	10,228.3	11,228.9	11,895.5	12,589.5	13,270.7	13,339.5	12,609.5	13,667.3	12,866.1
BURMA	223.3	214.1	199.7	224.6	224.9	229.8	235.1	233.2	221.7	247.8	229.1
INDONESIA	1,391.2	1,432.4	1,526.7	1,445.0	1,554.6	1,568.2	1,733.8	1,773.9	1,734.9	1,874.0	1,994.2
JAPAN	6,256.9	6,441.8	6,643.5	7,184.5	7,431.7	7,169.6	6,835.0	6,412.7	6,872.7	6,870.0	6,892.3
KHMER REPUBLIC	79.9	78.6	80.7	102.7	83.6	115.6	81.3	69.1	36.9	29.4	27.2
KOREA, REPUBLIC OF	1,144.3	1,271.2	1,383.5	1,295.6	1,306.2	1,482.1	1,479.7	1,478.3	1,548.5	1,579.5	1,634.8
MALAYSIA, WEST	508.4	558.5	582.9	598.4	674.9	759.7	793.8	857.2	866.7	997.1	1,025.6
PHILIPPINES	943.2	1,025.0	1,048.2	1,046.3	1,100.5	1,187.9	1,223.4	1,291.0	1,252.8	1,340.2	1,372.9
TAIWAN	600.1	677.8	708.4	752.0	779.0	768.7	806.5	806.2	824.9	879.3	884.0
THAILAND	682.6	747.5	889.6	859.3	858.8	915.3	945.8	982.3	891.5	1,111.4	1,115.6
VIET NAM, REPUBLIC OF	235.3	225.1	203.0	213.6	197.2	220.3	242.9	265.3	265.5	286.7	303.8
TOTAL 10 COUNTRIES	12,065.2	12,073.0	13,266.2	13,722.0	14,211.4	14,418.2	14,377.3	14,169.2	14,516.1	15,215.4	15,479.5
TOTAL EXCLUDING JAPAN	5,808.3	6,231.2	6,622.7	6,537.5	6,779.7	7,248.6	7,542.3	7,756.5	7,643.4	8,345.4	8,587.2
TOTAL 14 COUNTRIES	22,610.2	23,055.3	23,494.5	24,950.9	26,106.9	27,007.7	27,648.0	27,508.7	27,125.6	28,882.7	28,345.6
TOTAL EXCLUDING JAPAN	16,353.3	16,613.5	16,851.0	17,766.4	18,675.2	19,838.1	20,813.0	21,096.0	20,252.9	22,012.7	21,453.3
AUSTRALIA	2,702.0	2,608.4	3,109.0	2,844.5	3,389.3	3,271.6	3,230.1	3,387.7	3,064.7	3,194.8	3,270.7
NEW ZEALAND	995.7	1,061.8	1,088.7	1,128.0	1,181.2	1,194.8	1,166.0	1,176.8	1,199.4	1,164.5	1,140.3
TOTAL 2 COUNTRIES	3,697.7	3,730.2	4,197.7	3,972.5	4,570.5	4,466.4	4,396.1	4,564.5	4,264.1	4,359.3	4,411.0



TABLE 9 — FAR EAST AND OCEANIA

## AGGREGATES OF TOTAL FOOD PRODUCTION, BY COUNTRY, AVERAGE 1961-65, ANNUAL 1965-74

	AVERAGE 1961-65	1965	1966	1967	1968	1969	1970	1971	1972	1973	PRELIM. 1974
----- MILLION DOLLARS AT CONSTANT PRICES -----											
BANGLADESH	963.1	1,016.9	946.8	1,098.7	1,111.5	1,171.0	1,094.5	1,031.0	997.3	1,188.8	1,195.8
SRI LANKA	90.9	87.8	84.4	96.9	109.1	110.5	118.0	127.9	111.7	101.0	118.8
INDIA	7,645.8	7,360.7	7,259.5	7,895.5	8,541.6	8,987.7	9,699.6	9,724.3	9,057.7	9,849.3	9,078.0
PAKISTAN	597.7	658.5	659.6	710.5	821.4	894.2	957.8	907.9	907.5	1,007.3	958.4
TOTAL 4 COUNTRIES	9,297.5	9,123.9	8,950.3	9,801.6	10,583.6	11,163.4	11,869.9	11,791.1	11,074.2	12,146.4	11,351.0
BURMA	211.2	202.5	189.6	212.3	212.2	217.6	222.8	220.2	208.7	234.2	219.2
INDONESIA	1,136.5	1,160.1	1,233.1	1,142.7	1,282.0	1,281.0	1,436.2	1,470.2	1,419.0	1,558.5	1,676.4
JAPAN	6,004.3	6,162.4	6,354.0	6,881.5	7,145.6	6,898.9	6,588.7	6,165.6	6,629.0	6,609.9	6,633.7
KHMER REPUBLIC	67.7	65.2	67.1	87.3	68.9	101.2	74.1	58.8	27.2	19.7	19.1
KOREA, REPUBLIC OF	1,101.8	1,214.1	1,310.8	1,228.9	1,235.7	1,421.4	1,422.2	1,414.9	1,435.4	1,470.7	1,532.0
MALAYSIA, WEST	172.1	189.1	186.9	192.7	221.3	243.3	269.2	306.1	324.9	351.9	382.8
PHILIPPINES	896.2	977.3	998.7	999.0	1,053.2	1,142.1	1,172.4	1,239.8	1,203.9	1,285.0	1,312.3
TAIWAN	581.8	659.1	690.2	731.7	757.1	745.7	783.7	786.9	806.7	858.9	866.0
THAILAND	553.7	581.5	701.3	703.2	696.6	742.4	767.5	790.1	693.5	877.9	906.5
VIET NAM, REPUBLIC OF	208.9	201.0	183.0	194.9	179.8	204.3	225.0	246.7	249.7	266.0	285.4
TOTAL 10 COUNTRIES	10,934.2	11,412.3	11,914.7	12,374.2	12,852.4	12,997.9	12,961.8	12,699.3	12,998.0	13,532.7	13,833.4
TOTAL EXCLUDING JAPAN	4,929.9	5,249.9	5,560.7	5,492.7	5,706.8	6,099.0	6,373.1	6,533.7	6,369.0	6,922.8	7,199.7
TOTAL 14 COUNTRIES	20,231.7	20,536.2	20,865.0	22,175.8	23,436.0	24,161.3	24,831.7	24,490.4	24,072.2	25,579.1	25,186.4
TOTAL EXCLUDING JAPAN	14,227.4	14,373.8	14,511.0	15,294.3	16,290.4	17,262.4	18,243.0	18,324.8	17,443.2	19,069.2	18,550.7
AUSTRALIA	1,783.4	1,773.4	2,161.7	1,875.2	2,340.3	2,165.3	2,167.8	2,315.7	2,171.4	2,338.7	2,320.9
NEW ZEALAND	722.6	763.0	782.5	813.3	867.2	883.6	851.8	867.0	907.5	892.4	845.9
TOTAL 2 COUNTRIES	2,506.0	2,536.4	2,944.2	2,688.5	3,207.5	3,048.9	3,019.6	3,182.7	3,078.9	3,231.1	3,166.8

TABLE 10 --AUSTRALIA

PRODUCTION BY COMMODITY, VALUE AND INDICES OF TOTAL AGRICULTURAL AND FOOD PRODUCTION, AVERAGE 1961-65, ANNUAL 1965-74

COMMODITY	PRICE	AVERAGE										PRELIM.
	WEIGHT	1961-65	1965	1966	1967	1968	1969	1970	1971	1972	1973	1974
DOLLARS		-1,000 METRIC TONS-										
WHEAT	51	8,222	7,067	12,699	7,547	14,804	10,546	7,890	8,510	6,434	12,094	11,700
RICE, PADDY	58	136	153	182	214	221	256	247	299	248	309	409
SORGHUM	33	221	195	195	319	288	294	547	1,298	1,228	1,018	1,113
CORN	52	176	175	125	190	181	150	192	212	214	139	108
BARLEY	43	978	949	1,397	835	1,646	1,699	2,351	3,065	1,727	2,404	2,835
OATS	38	1,172	1,102	1,943	719	1,710	1,246	1,613	1,275	736	1,111	1,095
POTATOES	58	551	515	649	653	659	811	762	747	822	693	665
SUGARCANE	11	12,936	14,382	16,953	17,025	18,412	15,784	17,645	19,391	18,928	19,278	20,601
TOBACCO	2,513	13	11	12	13	11	15	17	17	16	15	15
COTTON	744	8	20	20	36	33	28	20	44	31	30	40
FLAXSEED	142	24	6	14	11	20	37	31	10	11	14	32
PEANUTS, IN SHELL	187	18	11	28	42	31	17	43	31	46	38	29
VEGETABLES	168	601	656	671	766	671	745	800	852	957	893	820
GRASS SEED	517	14	21	18	25	16	26	24	27	15	20	22
CITRUS FRUIT	77	241	236	277	267	315	291	384	363	424	359	407
APPLES	93	340	360	377	370	374	422	425	443	360	412	340
PEARS	100	124	121	153	134	150	107	190	188	184	163	165
APRICOTS	125	38	43	39	52	33	44	39	53	32	28	30
PEACHES	111	81	104	112	121	128	108	112	123	117	114	79
BANANAS	106	126	119	124	131	125	132	130	128	124	128	120
PINEAPPLES	56	83	94	115	130	121	120	141	154	126	129	128
GRAPES	66	600	691	591	695	639	553	758	549	832	598	614
BEEF AND VEAL	238	941	946	879	904	935	1,010	1,048	1,167	1,438	1,302	1,330
MUTTON AND LAMB	265	599	608	596	665	680	755	825	956	713	465	526
PORK	579	122	135	142	150	162	174	182	194	236	209	180
MILK	54	6,962	7,111	7,499	6,994	7,153	7,732	7,450	7,275	7,264	7,067	6,552
WOOL, GREASY BASIS	1,115	780	754	799	803	884	923	886	800	736	703	777
EGGS	582	148	155	162	172	175	185	196	185	174	168	168
AGGREGATES OF PRODUCTION	-----MILLION DOLLARS AT CONSTANT PRICES-----											
CROPS		991.2	966.4	1,350.9	1,072.1	1,500.3	1,263.7	1,239.4	1,348.4	1,171.0	1,461.5	1,470.4
LIVESTOCK		1,785.3	1,779.3	1,839.4	1,851.4	1,970.4	2,095.5	2,077.7	2,125.1	1,981.9	1,817.3	1,878.1
LIVESTOCK FEED DEDUCTION	.14	-74.5	-77.3	-81.3	-79.0	-81.4	-87.6	-87.0	-85.8	-88.2	-84.0	-77.8
TOTAL AGRICULTURE		2,702.0	2,668.4	3,109.0	2,844.5	3,389.3	3,271.6	3,230.1	3,387.7	3,064.7	3,194.8	3,270.7
TOTAL FOOD		1,783.4	1,773.4	2,161.7	1,875.2	2,340.3	2,165.3	2,167.8	2,315.7	2,171.4	2,338.7	2,320.9
INDICES OF PRODUCTION	(1961-65 = 100)											
CROPS		100	97	136	108	151	127	125	136	118	147	148
TOTAL AGRICULTURE		100	99	115	105	125	121	120	125	113	118	121
TOTAL FOOD		100	99	121	105	131	121	122	130	122	131	130
PER CAPITA AGRICULTURE		100	95	109	97	114	108	105	107	96	98	100
PER CAPITA FOOD		100	95	114	97	119	108	107	112	103	109	107
INDEX OF POPULATION	1961-65 POPULATION= 10,959,000											
		100.0	103.9	105.8	107.7	109.6	111.9	114.2	116.4	118.3	119.8	121.4

TABLE 11 --BANGLADESH

PRODUCTION BY COMMODITY, VALUE AND INDICES OF TOTAL AGRICULTURAL AND FOOD PRODUCTION, AVERAGE 1961-65, ANNUAL 1965-74

COMMODITY	PRICE	AVERAGE	1965	1966	1967	1968	1969	1970	1971	1972	1973	PRELIM.
	WEIGHT	1961-65										1974
	DOLLARS		-----1,000 METRIC TONS-----									
WHEAT	49	38	35	36	59	59	93	105	112	90	109	165
RICE, PADDY	60	15,035	15,751	14,362	16,773	17,033	18,027	16,733	15,650	15,400	18,500	18,500
CORN	42	4	3	3	3	3	3	3	2	2	2	3
BARLEY	37	16	12	12	15	16	20	20	26	21	15	15
CHICKPEAS	47	36	38	44	49	48	55	58	55	58	60	62
SUGARCANE	9	5,022	6,330	7,670	8,200	7,710	7,414	7,537	7,600	5,686	6,340	6,800
TJACCO	347	28	27	27	38	40	41	42	34	39	41	45
CUTTON	259	3	3	2	3	2	2	2	2	2	2	2
JUTE	95	1,119	1,154	1,184	1,243	1,045	1,302	1,248	907	1,175	1,080	828
COTTONSEED	52	6	6	5	6	5	4	4	4	4	4	4
FLAXSEED	71	10	9	9	9	7	7	8	8	8	4	4
RAPSEED	82	98	91	97	104	122	130	128	128	130	120	120
SESAME SEED	126	25	24	27	30	31	30	27	29	25	23	23
TEA	654	26	27	28	29	28	30	31	20	30	27	30
AGGREGATES OF PRODUCTION			-----MILLION DOLLARS AT CONSTANT PRICES-----									
CROPS		1,097.4	1,155.0	1,088.1	1,250.4	1,244.0	1,329.5	1,249.1	1,143.2	1,143.1	1,324.1	1,310.5
LIVESTOCK		0.0	0.0	0.0	0.0	0.0	0.0	0.0	0.0	0.0	0.0	0.0
TOTAL AGRICULTURE		1,097.4	1,155.0	1,088.1	1,250.4	1,244.0	1,329.5	1,249.1	1,143.2	1,143.1	1,324.1	1,310.5
TOTAL FOOD		963.1	1,016.9	946.8	1,098.7	1,111.5	1,171.0	1,094.5	1,031.0	997.3	1,188.8	1,195.8
INDICES OF PRODUCTION			(1961-65 = 100)									
CROPS		100	105	99	114	113	121	114	104	104	121	119
TOTAL AGRICULTURE		100	105	99	114	113	121	114	104	104	121	119
TOTAL FOOD		100	106	98	114	115	122	114	107	104	123	124
PER CAPITA AGRICULTURE		100	100	92	103	99	103	95	85	83	94	90
PER CAPITA FOOD		100	101	91	103	101	104	95	87	83	96	94
INDEX OF POPULATION												
1961-65 POPULATION= 59,452,000		100.0	105.2	108.1	111.0	114.0	117.1	119.4	122.5	125.1	128.5	132.0

TABLE 12 --BURMA

## PRODUCTION BY COMMODITY, VALUE AND INDICES OF TOTAL AGRICULTURAL AND FOOD PRODUCTION, AVERAGE 1961-65, ANNUAL 1965-74

COMMODITY	PRICE	AVERAGE	1965	1966	1967	1968	1969	1970	1971	1972	1973	PRELIM.
	WEIGHT	1961-65										1974
	DOLLARS		- - - - -1,000 METRIC TONS- - - - -									
WHEAT	50	38	72	97	67	51	25	33	40	39	40	40
RICE, PADDY	13	8,041	8,055	6,637	7,770	8,023	7,985	8,162	8,175	7,357	8,735	7,620
MILLET	9	57	41	40	25	43	53	52	49	48	50	50
CORN	12	57	48	54	65	62	48	67	73	60	60	60
PULSES	30	308	279	278	263	268	320	273	290	345	360	375
POTATOES	24	39	35	21	28	42	36	41	41	50	55	60
SUGARCANE	3	1,104	1,084	1,448	1,582	1,446	1,308	1,312	1,437	1,400	1,450	1,000
TOBACCO	121	41	44	35	43	53	46	41	44	44	45	30
COTTON	139	19	15	14	16	11	11	14	16	14	16	10
JUTE	82	10	15	13	22	21	22	28	27	30	33	20
COTTONSEED	10	35	30	28	33	21	23	28	33	28	32	20
PEANUTS, IN SHELL	47	359	288	277	371	398	444	529	450	390	500	500
SESAME SEED	68	73	58	57	108	83	102	132	91	90	90	90
VEGETABLES	32	936	893	986	1,015	957	1,090	974	1,044	1,050	1,075	1,075
BANANAS	28	173	202	213	209	211	218	176	187	200	225	240
OTHER FRUIT	64	517	449	461	472	467	437	473	473	473	473	473
TEA	56	5	8	9	9	9	9	6	9	9	9	9
RUBBER	215	16	12	11	12	12	13	13	13	13	13	13
AGGREGATES OF PRODUCTION	- - - - -MILLION DOLLARS AT CONSTANT PRICES- - - - -											
CROPS		223.3	214.1	199.7	224.6	224.9	229.8	235.1	233.2	221.7	247.8	229.1
LIVESTOCK		0.0	0.0	0.0	0.0	0.0	0.0	0.0	0.0	0.0	0.0	0.0
TOTAL AGRICULTURE		223.3	214.1	199.7	224.6	224.9	229.8	235.1	233.2	221.7	247.8	229.1
TOTAL FOOD		211.2	202.5	189.6	212.3	212.2	217.6	222.8	220.2	208.7	234.2	219.2
INDICES OF PRODUCTION	(1961-65 = 100)											
CROPS		100	96	89	101	101	103	105	104	99	111	103
TOTAL AGRICULTURE		100	96	89	101	101	103	105	104	99	111	103
TOTAL FOOD		100	96	90	101	100	103	105	104	99	111	104
PER CAPITA AGRICULTURE		100	92	83	93	91	90	90	87	81	89	81
PER CAPITA FOOD		100	92	84	93	90	90	90	87	81	89	81
INDEX OF POPULATION												
1961-65 POPULATION= 23,692,000		100.0	104.4	106.7	109.0	111.4	113.9	116.5	119.1	122.0	124.7	127.6

TABLE 13 --INDIA

PRODUCTION BY COMMODITY, VALUE AND INDICES OF TOTAL AGRICULTURAL AND FOOD PRODUCTION, AVERAGE 1961-65, ANNUAL 1965-74

COMMODITY	PRICE WEIGHT	AVERAGE 1961-65, ANNUAL 1965-74										PRELIM. 1974
		1961-65	1965	1966	1967	1968	1969	1970	1971	1972	1973	
	DOLLARS	-----1,000 METRIC TONS-----										
WHEAT	66	11,192	12,258	10,394	11,393	16,540	18,651	20,093	23,832	26,410	24,735	22,072
RICE, PADDY	53	52,864	45,929	45,703	56,474	59,701	60,706	63,401	64,667	58,926	65,679	59,309
SORGHUM	61	8,845	7,581	9,224	10,048	9,804	9,721	8,105	7,722	6,968	8,992	8,100
MILLET, BAJRA	68	3,953	3,752	4,468	5,185	3,802	5,327	8,029	5,319	3,929	7,086	4,200
MILLET, RAGI	64	1,897	1,327	1,631	1,884	1,648	2,117	2,155	2,208	1,923	2,131	2,000
MILLET, SMALL	65	1,880	1,555	1,488	1,907	1,804	1,732	1,988	1,669	1,552	1,864	1,600
CORNI	55	4,599	4,823	4,894	6,270	5,701	5,674	7,486	5,101	6,388	5,643	5,500
BARLEY	52	2,601	2,522	2,382	2,348	3,504	2,424	2,716	2,784	2,577	2,379	2,327
CHICKPEAS	59	5,535	5,775	4,224	3,622	5,971	4,309	5,546	5,199	5,081	4,537	4,006
PIGEON PEA	68	1,608	1,890	1,733	1,130	1,741	1,816	1,842	1,883	1,683	1,928	1,364
OTHER PULSES	77	4,512	4,749	3,987	3,595	4,390	4,293	4,303	4,736	4,330	3,442	4,384
POTATOES	41	3,023	3,605	4,076	3,522	4,232	4,726	3,913	4,807	4,832	4,451	4,626
CASSAVA	20	2,295	3,033	3,467	3,817	4,644	4,636	5,214	5,130	5,939	6,371	6,358
SWEET POTATOES	39	984	1,098	991	1,297	1,588	1,764	1,444	1,750	1,600	1,800	1,850
SUGARCANE	8	106,403	121,909	123,990	92,826	95,500	124,676	135,024	126,368	113,570	124,867	137,833
TOBACCO	436	338	356	293	353	369	361	337	362	419	362	441
COTTON	281	1,032	997	997	1,149	1,062	1,052	972	1,296	1,134	1,152	1,215
JUTE	130	1,022	806	964	1,138	528	1,018	889	1,023	896	1,112	720
COTTONSEED	51	2,064	1,994	1,994	2,298	2,124	2,104	1,944	2,592	2,268	2,304	2,430
FLAXSEED	89	432	493	331	260	438	329	469	453	530	428	471
PEANUTS, IN SHELL	99	5,048	4,263	4,411	5,731	4,631	5,130	6,111	6,181	4,211	5,793	5,000
RAPESEED	114	1,277	1,474	1,298	1,228	1,568	1,347	1,564	1,976	1,433	1,808	1,692
SESAME SEED	152	444	424	416	445	422	448	562	450	385	486	475
CASTOR BEANS	83	107	106	80	110	121	116	123	136	154	145	235
COFFEE	555	43	47	64	78	57	74	69	115	74	95	92
TEA	532	357	366	376	385	402	396	422	433	456	468	475
RUBBER	438	38	50	55	65	71	82	92	101	112	125	115
AGGREGATES OF PRODUCTION		-----MILLION DOLLARS AT CONSTANT PRICES-----										
CROPS		8,494.1	8,196.3	8,088.4	8,829.0	9,395.1	9,899.6	10,590.2	10,769.3	10,068.4	10,882.0	10,120.9
LIVESTOCK		0.0	0.0	0.0	0.0	0.0	0.0	0.0	0.0	0.0	0.0	0.0
TOTAL AGRICULTURE		8,494.1	8,196.3	8,088.4	8,829.0	9,395.1	9,899.6	10,590.2	10,769.3	10,068.4	10,882.0	10,120.9
TOTAL FOOD		7,645.8	7,360.7	7,259.5	7,895.5	8,541.6	8,987.7	9,699.6	9,724.3	9,057.7	9,849.3	9,078.0
INDICES OF PRODUCTION		(1961-65 = 100)										
CROPS		100	96	95	104	111	117	125	127	119	128	119
TOTAL AGRICULTURE		100	96	95	104	111	117	125	127	119	128	119
TOTAL FOOD		100	96	95	103	112	118	127	127	118	129	119
PER CAPITA AGRICULTURE		100	92	89	95	99	103	107	107	98	103	93
PER CAPITA FOOD		100	92	89	94	100	103	109	107	97	104	93
INDEX OF POPULATION												
1961-65 POPULATION=484,432,000		100.0	104.4	106.8	109.1	111.6	114.1	116.6	119.2	121.8	124.5	127.3

TABLE 14 --INDONESIA

PRODUCTION BY COMMODITY, VALUE AND INDICES OF TOTAL AGRICULTURAL AND FOOD PRODUCTION, AVERAGE 1961-65, ANNUAL 1965-74

COMMODITY	PRICE WEIGHT	AVERAGE 1961-65	1965	1966	1967	1968	1969	1970	1971	1972	1973	PRELIM.
												1974
DOLLARS			-1,000 METRIC TONS-									
RICE, PADDY	52	13,048	13,657	14,368	13,918	15,640	16,372	18,721	19,645	19,045	22,618	23,538
CORN	38	2,804	2,365	3,717	2,369	3,166	2,293	2,825	2,606	2,268	2,594	2,765
CASSAVA	12	11,832	12,643	11,232	10,747	11,356	11,034	10,451	10,042	9,450	12,300	14,000
SWEETPOTATOES	13	3,165	2,651	2,476	2,144	2,364	3,021	3,029	2,153	2,147	2,150	2,300
SUGARCANE	5	7,477	8,360	9,170	8,880	9,190	8,260	9,785	10,448	8,820	10,500	11,000
TOBACCO	862	74	77	98	101	69	69	72	78	77	79	79
SOYBEANS	73	395	410	417	416	420	389	488	475	518	529	550
PEANUTS, IN SHELL	76	380	370	400	365	414	382	419	424	412	458	475
COFFEE	224	111	118	130	129	157	177	185	191	174	174	180
TEA	263	84	89	92	78	73	63	67	71	69	79	77
RUBBER	215	663	717	716	762	730	788	811	804	885	890	890
KAPOK	74	23	25	26	27	23	28	28	29	28	29	29
PALM OIL	122	151	157	174	174	188	189	214	248	269	290	325
COPRA	42	1,251	1,249	1,129	1,094	1,131	1,097	1,064	1,139	1,215	1,070	1,150
PALM KERNELS	71	33	33	35	35	40	42	48	56	59	64	66
AGGREGATES OF PRODUCTION			-MILLION DOLLARS AT CONSTANT PRICES-									
CROPS		1,391.2	1,432.4	1,526.7	1,445.0	1,554.6	1,568.2	1,733.8	1,773.9	1,734.9	1,982.4	2,073.2
LIVESTOCK		0.0	0.0	0.0	0.0	0.0	0.0	0.0	0.0	0.0	0.0	0.0
TOTAL AGRICULTURE		1,391.2	1,432.4	1,526.7	1,445.0	1,554.6	1,568.2	1,733.8	1,773.9	1,734.9	1,982.4	2,073.2
TOTAL FOOD		1,136.5	1,160.1	1,233.1	1,142.7	1,282.0	1,281.0	1,436.2	1,470.2	1,419.0	1,661.0	1,751.0
INDICES OF PRODUCTION			(1961-65 = 100)									
CROPS		100	103	110	104	112	113	125	128	125	142	149
TOTAL AGRICULTURE		100	103	110	104	112	113	125	128	125	142	149
TOTAL FOOD		100	102	108	101	113	113	126	129	125	146	154
PER CAPITA AGRICULTURE		100	98	103	95	99	98	105	105	100	110	113
PER CAPITA FOOD		100	97	101	92	100	98	106	106	100	113	116
INDEX OF POPULATION												
1961-65 POPULATION=100,918,000		100.0	104.7	107.3	109.8	112.6	115.6	118.6	121.9	125.2	128.7	132.1

TABLE 15--JAPAN

PRODUCTION BY COMMODITY, VALUE AND INDICES OF TOTAL AGRICULTURAL AND FOOD PRODUCTION, AVERAGE 1961-65, ANNUAL 1965-74

COMMODITY	PRICE WEIGHT	AVERAGE 1961-65	1965-74										PRELIM. 1974
			1965	1966	1967	1968	1969	1970	1971	1972	1973		
	DOLLARS		- - - - -1,000 METRIC TONS- - - - -										
WHEAT	102	1,332	1,287	1,024	997	1,012	758	474	440	284	202	232	
RICE, PADDY	202	15,808	15,511	15,931	18,066	18,061	17,504	15,861	13,609	14,871	15,186	15,353	
MILLET AND SURGHUM	134	52	35	28	22	20	14	8	2	0	0	0	
CORN	75	97	75	63	61	51	40	33	33	24	19	14	
BARLEY	100	1,379	1,234	1,105	1,032	1,020	812	572	503	325	216	232	
OTHER GRAINS	108	182	168	131	130	116	91	79	75	67	59	37	
PULSES	196	269	279	206	291	247	218	254	186	265	235	213	
POTATOES	40	3,781	4,056	3,383	3,638	4,056	3,575	2,611	3,271	3,533	3,413	2,920	
SWEET POTATOES	35	6,008	4,955	4,810	4,031	3,594	2,855	2,564	2,041	1,987	1,550	1,300	
SUGARCANE	13	2,149	2,694	2,532	2,814	2,829	2,639	2,584	1,895	2,048	2,037	2,000	
SUGAR BEETS	17	1,323	1,815	1,639	1,984	2,110	2,075	2,324	2,205	2,759	2,948	2,100	
TOBACCO	1,061	166	193	198	209	193	174	150	149	144	154	149	
SOYBEANS	149	302	230	199	190	168	136	126	122	127	118	133	
PEANUTS, IN SHELL	179	139	137	139	136	122	126	124	111	115	97	91	
RAPESEED	140	178	126	95	79	68	48	30	23	16	13	9	
VEGETABLES	82	11,483	12,609	13,420	13,649	14,821	14,320	13,319	13,884	13,765	13,226	12,980	
CITRUS FRUIT	178	1,310	1,639	2,089	1,944	2,738	2,516	2,911	2,955	3,994	3,909	3,911	
APPLES	91	1,066	1,132	1,059	1,125	1,136	1,085	1,021	1,007	959	963	924	
PEARS	111	330	360	404	447	475	489	464	440	460	495	514	
PEPSIMMONS	132	382	346	419	504	450	444	343	303	307	347	290	
OTHER FRUIT	190	518	588	650	729	736	680	680	655	641	723	763	
TEA	957	80	78	83	85	85	90	91	93	95	101	105	
BEEF AND VEAL	940	185	217	155	158	176	216	261	275	295	220	290	
PORK	690	303	407	565	603	590	508	648	750	770	820	920	
POULTRY MEAT	503	148	204	240	292	328	400	487	537	639	705	730	
OTHER MEAT	596	23	18	14	15	16	13	11	10	7	6	5	
MILK	85	2,711	3,221	3,409	3,566	4,016	4,509	4,762	4,819	4,938	4,912	4,860	
EGGS	477	882	1,036	1,087	1,296	1,373	1,607	1,734	1,806	1,795	1,805	1,780	

AGGREGATES OF PRODUCTION

	- - - - -MILLION DOLLARS AT CONSTANT PRICES- - - - -											
CROPS	5,774.3	5,854.3	6,010.1	6,478.5	6,682.0	6,347.3	5,899.3	5,413.7	5,836.3	5,834.0	5,800.1	
LIVESTOCK	1,122.3	1,366.1	1,472.9	1,641.7	1,743.3	1,912.0	2,175.9	2,323.2	2,410.1	2,409.3	2,539.8	
LIVESTOCK FEED DEDUCTION .57	-639.7	-778.6	-839.5	-935.7	-993.6	-1,089.9	-1,240.2	-1,324.2	-1,373.7	-1,373.3	-1,447.6	
TOTAL AGRICULTURE	6,256.9	6,441.8	6,643.5	7,184.5	7,431.7	7,169.6	6,835.0	6,412.7	6,872.7	6,870.0	6,892.3	
TOTAL FOOD	6,004.3	6,162.4	6,354.0	6,881.5	7,145.6	6,898.9	6,588.7	6,165.6	6,629.0	6,609.9	6,633.7	

INDICES OF PRODUCTION

(1961-65 = 100)

CROPS	100	101	104	112	116	110	102	94	101	101	100
TOTAL AGRICULTURE	100	103	106	115	119	115	109	102	101	110	110
TOTAL FOOD	100	103	106	115	119	115	110	103	110	110	110
PER CAPITA AGRICULTURE	100	101	103	110	113	108	101	94	100	98	97
PER CAPITA FOOD	100	101	103	110	113	108	102	94	100	98	97
INDEX OF POPULATION											
1961-65 POPULATION= 96,860,000	100.0	102.1	103.0	104.1	105.3	106.5	107.7	109.0	110.4	111.6	113.0

C  
 UPDATA  
 1981

TABLE 16 --KHMER REPUBLIC (CAMBODIA)

PRODUCTION BY COMMODITY, VALUE AND INDICES OF TOTAL AGRICULTURAL AND FOOD PRODUCTION, AVERAGE 1961-65, ANNUAL 1965-74

COMMODITY	PRICE	AVERAGE	1965	1966	1967	1968	1969	1970	1971	1972	1973	PRELIM.
	WEIGHT	1961-65										1974
	DOLLARS		-1,000 METRIC TONS-									
RICE, PADDY	25	2,459	2,376	2,457	3,251	2,503	3,814	2,732	2,138	953	651	635
CORN	25	159	139	136	150	154	118	137	121	79	80	72
TOBACCO	318	8	10	10	12	14	16	10	9	9	9	9
COTTON	85	4	2	1	1	2	2	0	0	1	1	1
COTTONSEED	21	7	3	2	2	4	4	0	0	2	2	2
SOYBEANS	98	9	5	7	8	4	9	9	9	2	2	2
PEANUTS, IN SHELL	57	15	24	21	21	26	22	17	15	14	14	14
SESAME SEED	43	10	8	10	5	9	11	11	11	10	10	10
PEPPER	738	2	2	2	3	2	2	2	2	2	2	2
RUBBER	155	45	49	51	54	49	46	13	35	30	30	20
KAPCK	126	9	7	7	7	7	4	4	4	4	4	4
AGGREGATES OF PRODUCTION	-MILLION DOLLARS AT CONSTANT PRICES-											
CROPS		79.9	78.6	80.7	102.7	83.6	115.6	81.3	69.1	36.9	29.4	27.2
LIVESTOCK		0.0	0.0	0.0	0.0	0.0	0.0	0.0	0.0	0.0	0.0	0.0
TOTAL AGRICULTURE		79.9	78.6	80.7	102.7	83.6	115.6	81.3	69.1	36.9	29.4	27.2
TOTAL FOOD		67.7	65.2	67.1	87.3	68.9	101.2	74.1	58.8	27.2	19.7	19.1
INDICES OF PRODUCTION	(1961-65 = 100)											
CROPS		100	98	101	129	105	145	102	86	46	37	34
TOTAL AGRICULTURE		100	98	101	129	105	145	102	86	46	37	34
TOTAL FOOD		100	96	99	129	102	149	109	87	40	29	28
PER CAPITA AGRICULTURE		100	93	94	116	92	124	85	69	36	28	25
PER CAPITA FOOD		100	91	92	116	90	127	91	70	31	22	21
INDEX OF POPULATION												
1961-65 POPULATION= 5,908,000		100.0	104.9	107.8	110.7	113.7	117.0	120.3	123.9	127.8	131.5	135.4



TABLE 17--KOREA, REPUBLIC OF

PRODUCTION BY COMMODITY, VALUE AND INDICES OF TOTAL AGRICULTURAL AND FOOD PRODUCTION, AVERAGE 1961-65, ANNUAL 1965-74

COMMODITY	PRICE WEIGHT	AVERAGE 1961-65, ANNUAL 1965-74										PRELIM. 1974
		1965	1966	1967	1968	1969	1970	1971	1972	1973		
DOLLARS		-----1,000 METRIC TONS-----										
WHEAT	90	277	300	315	310	345	366	357	322	241	162	136
RICE, PADDY	129	4,818	4,767	5,337	4,906	4,351	5,570	5,471	5,552	5,496	5,850	6,173
MILLET AND SURGHUM	90	110	100	95	69	123	97	73	66	60	53	50
CORN	91	26	40	34	60	63	63	68	64	54	61	58
BARLEY	97	1,419	1,807	2,018	1,916	2,084	2,066	1,974	1,857	1,965	1,778	1,705
OTHER GRAINS	77	49	47	53	36	46	37	30	25	25	23	19
PULSES	132	25	26	31	30	38	38	39	35	32	34	24
POTATOES	57	483	581	688	566	617	599	605	589	575	470	469
SWEET POTATOES	35	1,828	2,997	2,690	1,671	2,049	2,123	2,136	1,901	1,850	1,669	1,450
TOBACCO	954	40	56	72	66	70	59	56	63	115	111	105
COTTON	329	5	4	5	4	4	5	4	4	3	4	3
COTTONSEED	66	11	8	9	8	8	9	8	8	6	6	6
SOYBEANS	150	163	174	161	201	245	229	232	222	225	246	319
PEANUTS, IN SHELL	201	3	4	5	6	8	9	10	8	10	4	5
VEGETABLES	86	1,338	1,576	1,717	1,869	2,150	2,428	2,520	2,708	2,740	2,621	2,978
APPLES	117	120	167	174	190	199	219	212	219	230	289	300
PEARS	116	30	40	41	41	48	46	52	48	53	51	55
PEACHES	98	30	54	63	71	72	68	78	70	72	84	70
PERSIMMONS	153	18	24	22	24	35	34	30	23	25	33	35
OTHER FRUIT	223	15	26	30	34	40	49	51	52	54	90	127
HEMP FIBER	406	6	6	6	6	6	7	7	5	6	4	4
BEEF AND VEAL	758	43	42	29	34	31	31	48	46	42	60	49
PORK	437	15	13	18	21	26	37	42	34	93	103	95
AGGREGATES OF PRODUCTION		-----MILLION DOLLARS AT CONSTANT PRICES-----										
CRUPS		1,104.9	1,233.7	1,353.6	1,260.6	1,271.3	1,442.4	1,424.9	1,428.5	1,476.1	1,489.0	1,556.2
LIVESTOCK		39.4	57.5	29.9	35.0	34.9	39.7	54.8	49.8	72.4	90.5	78.6
TOTAL AGRICULTURE		1,144.3	1,271.2	1,383.5	1,295.6	1,306.2	1,482.1	1,479.7	1,478.3	1,548.5	1,579.5	1,634.8
TOTAL FOOD		1,101.8	1,214.1	1,310.8	1,228.9	1,235.7	1,421.4	1,422.2	1,414.9	1,435.4	1,470.7	1,532.0
INDICES OF PRODUCTION		(1961-65 = 100)										
CRUPS		100	112	123	114	115	131	129	129	134	135	141
TOTAL AGRICULTURE		100	111	121	113	114	130	129	129	135	138	143
TOTAL FOOD		100	110	119	112	112	129	129	128	130	133	139
PER CAPITA AGRICULTURE		100	105	112	102	101	113	110	108	110	111	112
PER CAPITA FOOD		100	105	110	101	99	112	110	107	106	107	109
INDEX OF POPULATION		1961-65 POPULATION = 27,064,000										
		100.0	105.2	107.9	110.3	112.8	115.3	117.6	119.8	122.3	124.8	127.3

BT

## PRODUCTION BY COMMODITY, VALUE AND INDICES OF TOTAL AGRICULTURAL AND FOOD PRODUCTION, AVERAGE 1961-65, ANNUAL 1965-74

COMMODITY	PRICE	AVERAGE	1965	1966	1967	1968	1969	1970	1971	1972	1973	PRELIM.
	WEIGHT	1961-65										1974
	DOLLARS		-1,000 METRIC TONS-									
RICE, PADDY	99	955	1,059	1,042	1,030	1,218	1,354	1,429	1,546	1,565	1,729	1,814
SWEET POTATOES	56	127	142	146	142	132	112	112	91	81	71	81
TOBACCO	594	3	3	2	2	2	2	3	4	5	5	9
BANANAS	62	337	338	208	198	203	188	213	178	178	142	147
PINEAPPLES	35	205	258	258	280	283	306	283	268	255	242	245
COFFEE	403	5	4	5	5	5	5	6	4	5	5	5
TEA	1,592	3	3	3	3	3	3	3	3	4	5	5
RUBBER	424	773	852	915	938	1,051	1,199	1,216	1,279	1,251	1,491	1,480
PALM OIL	168	120	149	186	217	265	326	402	551	659	740	864
COPRA	133	136	126	130	138	146	131	160	167	154	121	109
PALM KERNELS	98	30	35	43	49	60	75	87	119	137	183	205
MILK	73	18	15	12	13	14	14	14	14	14	15	16
AGGREGATES OF PRODUCTION			-MILLION DOLLARS AT CONSTANT PRICES-									
CROPS		507.1	557.4	582.0	597.5	673.9	758.7	792.8	856.2	865.7	996.0	1,024.4
LIVESTOCK		1.3	1.1	0.9	0.9	1.0	1.0	1.0	1.0	1.0	1.1	1.2
TOTAL AGRICULTURE		508.4	558.5	582.9	598.4	674.9	759.7	793.8	857.2	866.7	997.1	1,025.6
TOTAL FOOD		172.1	189.1	186.9	192.7	221.3	243.3	269.2	306.1	324.9	351.9	382.8
INDICES OF PRODUCTION			(1961-65 = 100)									
CROPS		100	110	115	118	133	150	156	169	171	196	202
TOTAL AGRICULTURE		100	110	115	118	133	149	156	169	170	196	202
TOTAL FOOD		100	110	109	112	129	141	156	178	189	204	222
PER CAPITA AGRICULTURE		100	104	105	105	115	126	128	135	132	148	148
PER CAPITA FOOD		100	104	100	100	112	119	128	142	147	154	163
INDEX OF POPULATION												
1961-65 POPULATION=	7,596,000	100.0	105.8	109.3	112.4	115.5	118.5	121.9	125.3	128.9	132.3	136.0

TABLE 19 --NEW ZEALAND

PRODUCTION BY COMMODITY, VALUE AND INDICES OF TOTAL AGRICULTURAL AND FOOD PRODUCTION, AVERAGE 1961-65, ANNUAL 1965-74

COMMODITY	PRICE	AVERAGE	1965	1966	1967	1968	1969	1970	1971	1972	1973	PRELIM.
	WEIGHT	1961-65										1974
DOLLARS			-1,000 METRIC TONS-									
WHEAT	69	248	250	292	348	442	457	287	326	389	378	254
CORN	83	16	24	19	18	36	51	59	101	116	102	127
BARLEY	58	98	106	114	134	219	233	174	259	336	257	280
OATS	76	34	45	44	28	45	52	58	60	50	45	55
PULSES	70	25	24	29	32	36	57	50	52	58	59	60
POTATOES	55	204	247	235	187	236	256	253	210	220	238	246
ONIONS	82	21	19	22	24	24	30	26	24	26	27	27
TOBACCO	1,094	4	4	3	3	3	3	3	3	3	3	3
GRASS SEED	406	24	20	25	28	22	24	18	34	19	24	23
APPLES	125	86	92	108	108	113	107	134	114	149	144	148
PEARS	141	15	16	17	16	20	17	19	20	18	20	17
PEACHES	113	16	16	21	22	22	23	26	24	23	26	26
BEEF AND VEAL	295	278	276	292	302	345	376	393	393	411	449	418
MUTTON AND LAMB	334	471	476	469	521	566	563	563	564	569	554	466
PORK	519	42	40	41	37	38	37	39	44	45	41	41
POULTRY MEAT	992	7	8	9	11	10	10	12	17	19	20	22
MILK	66	5,519	5,989	6,111	6,209	6,312	6,432	5,961	5,937	6,216	5,984	5,831
WOOL, GREASY BASIS	909	285	315	322	330	332	328	334	322	309	285	310
EGGS	810	41	46	49	52	54	48	51	54	52	53	58
AGGREGATES OF PRODUCTION	-----MILLION DOLLARS AT CONSTANT PRICES-----											
CROPS		70.2	73.8	80.1	82.9	98.7	105.2	91.7	104.6	112.7	109.0	104.7
LIVESTOCK		925.5	988.0	1,008.6	1,045.1	1,082.5	1,089.6	1,074.3	1,072.2	1,086.7	1,055.5	1,035.6
TOTAL AGRICULTURE		995.7	1,061.8	1,088.7	1,128.0	1,181.2	1,194.8	1,166.0	1,176.8	1,199.4	1,164.5	1,140.3
TOTAL FOOD		722.6	763.0	782.5	813.3	867.2	883.6	851.8	867.0	907.5	892.4	845.9
INDICES OF PRODUCTION	(1961-65 = 100)											
CROPS		100	105	114	118	141	150	131	149	161	155	149
TOTAL AGRICULTURE		100	107	109	113	119	120	117	118	120	117	115
TOTAL FOOD		100	106	108	113	120	122	118	120	126	123	117
PER CAPITA AGRICULTURE		100	103	103	105	110	109	105	105	105	100	96
PER CAPITA FOOD		100	102	102	105	110	111	106	107	110	105	98
INDEX OF POPULATION												
1961-65 POPULATION=	2,533,000	100.0	103.8	105.7	107.7	108.6	109.6	110.9	112.5	114.5	116.9	119.2

TABLE 20 --PAKISTAN

PRODUCTION BY COMMODITY, VALUE AND INDICES OF TOTAL AGRICULTURAL AND FOOD PRODUCTION, AVERAGE 1961-65, ANNUAL 1965-74

COMMODITY	PRICE	AVERAGE										PRELIM.
	WEIGHT	1961-65	1965	1966	1967	1968	1969	1970	1971	1972	1973	1974
	DOLLARS											
			-----1,000 METRIC TONS-----									
WHEAT	49	4,153	4,591	3,916	4,334	6,418	6,618	7,294	6,476	6,890	7,800	7,800
RICE, PADDY	60	1,825	1,976	2,048	2,251	3,051	3,601	3,303	3,343	3,436	3,686	3,303
MILLET	43	394	370	371	414	330	302	361	304	361	351	325
SURGHUM	39	261	274	277	291	262	283	329	312	302	378	350
CORN	42	514	540	587	792	626	668	717	705	706	767	711
BARLEY	37	118	118	83	88	108	97	104	91	103	109	139
CHICKPEAS	47	639	672	540	635	481	528	511	500	527	611	591
SUGARCANE	9	15,852	16,670	22,310	21,988	18,650	21,971	26,369	23,167	19,947	23,910	21,344
TOBACCO	347	72	82	110	140	130	125	127	113	87	66	66
CUTTON	259	380	415	455	517	526	537	544	709	703	623	652
CUTTONSEED	52	760	829	927	998	1,059	1,075	1,087	1,461	1,407	1,321	1,355
FLAXSEED	71	3	4	3	3	4	3	3	3	4	5	5
RAPESEED	82	220	215	182	203	274	228	255	269	286	293	285
SESAME SEED	126	9	7	7	9	8	8	10	13	15	10	12
AGGREGATES OF PRODUCTION												
			-----MILLION DOLLARS AT CONSTANT PRICES-----									
CROPS		721.3	794.8	815.8	893.2	1,003.0	1,076.9	1,143.0	1,130.9	1,120.1	1,192.0	1,150.6
LIVESTOCK		0.0	0.0	0.0	0.0	0.0	0.0	0.0	0.0	0.0	0.0	0.0
TOTAL AGRICULTURE		721.3	794.8	815.8	893.2	1,003.0	1,076.9	1,143.0	1,130.9	1,120.1	1,192.0	1,150.6
TOTAL FOOD		597.7	658.5	659.6	710.5	821.4	896.2	957.8	907.9	907.5	1,007.3	958.4
INDICES OF PRODUCTION												
				(1961-65 = 100)								
CROPS		100	110	113	124	139	149	158	157	155	165	160
TOTAL AGRICULTURE		100	110	113	124	139	149	158	157	155	165	160
TOTAL FOOD		100	110	110	119	137	150	160	152	152	169	160
PER CAPITA AGRICULTURE		100	104	104	111	121	126	130	125	120	124	117
PER CAPITA FOOD		100	104	101	107	119	127	132	122	118	127	117
INDEX OF POPULATION												
1961-65 POPULATION= 49,354,000		100.0	105.5	108.5	111.6	114.8	118.1	121.5	125.1	128.7	132.5	136.4

TABLE 21--PHILIPPINES

PRODUCTION BY COMMODITY, VALUE AND INDICES OF TOTAL AGRICULTURAL AND FOOD PRODUCTION, AVERAGE 1961-65, ANNUAL 1965-74

COMMODITY	PRICE	AVERAGE	1965	1966	1967	1968	1969	1970	1971	1972	1973	PRELIM.
	WEIGHT	1961-65										1974
	DOLLARS		-----1,000 METRIC TONS-----									
RICE, PADDY	72	3,957	4,073	4,094	4,165	4,445	5,233	5,343	5,100	4,414	5,594	5,932
CORN	48	1,305	1,380	1,490	1,435	1,733	2,008	2,005	2,013	1,831	2,289	2,350
PULSES	133	30	26	24	21	22	20	23	24	24	24	25
POTATOES	112	14	16	17	17	12	18	20	22	25	27	29
CASSAVA	23	548	646	614	529	487	506	442	427	440	460	480
SWEETPOTATOES	27	738	725	701	687	706	718	731	657	651	650	650
OTHER ROOT CROPS	26	158	166	156	152	151	160	143	137	127	125	125
SUGARCANE	9	14,232	16,300	13,282	15,277	15,525	15,550	17,535	23,287	19,941	22,676	26,085
TOBACCO	240	66	65	69	65	65	57	61	71	51	80	90
PEANUTS, IN SHELL	112	12	13	14	14	15	15	17	19	19	20	20
VEGETABLES	74	177	185	208	215	216	231	286	277	271	300	320
CITRUS FRUIT	67	62	71	75	78	78	75	71	63	65	65	65
BANANAS	23	641	683	765	781	747	896	900	1,035	1,250	1,010	1,300
PINEAPPLES	40	152	176	188	208	226	238	233	365	380	380	400
OTHER FRUIT	57	286	352	367	374	365	388	309	370	370	380	380
COFFEE	355	38	43	43	44	44	44	49	50	55	51	55
COCOA BEANS	748	4	4	4	4	4	4	4	4	3	4	4
ABACA	156	114	108	113	103	103	106	122	105	110	115	125
COPRA	103	1,396	1,524	1,686	1,431	1,542	1,516	1,656	1,788	2,170	1,809	1,290
MEATS	546	322	374	414	426	440	465	450	469	484	462	486
AGGREGATES OF PRODUCTION			-----MILLION DOLLARS AT CONSTANT PRICES-----									
CROPS		767.1	820.8	822.2	813.7	860.3	934.0	977.7	1,034.9	988.5	1,087.9	1,107.5
LIVESTOCK		176.1	204.2	226.0	232.6	240.2	253.9	245.7	256.1	264.3	252.3	265.4
TOTAL AGRICULTURE		943.2	1,025.0	1,048.2	1,046.3	1,100.5	1,187.9	1,223.4	1,291.0	1,252.8	1,340.2	1,372.9
TOTAL FOOD		896.2	977.3	998.7	999.0	1,053.2	1,142.1	1,172.4	1,239.8	1,203.9	1,285.0	1,312.3
INDICES OF PRODUCTION			(1961-65 = 100)									
CROPS		100	107	107	106	112	122	127	135	129	142	144
TOTAL AGRICULTURE		100	109	111	111	117	126	130	137	133	142	146
TOTAL FOOD		100	109	111	111	118	127	131	138	134	143	146
PER CAPITA AGRICULTURE		100	102	101	97	99	104	103	105	99	102	102
PER CAPITA FOOD		100	102	101	97	100	104	104	106	100	103	102
INDEX OF POPULATION			1961-65 POPULATION= 30,322,000									
		100.0	106.7	110.2	113.9	117.7	121.6	125.7	129.9	134.3	138.7	143.2

TABLE 22--SRI LANKA (CEYLON)

PRODUCTION BY COMMODITY, VALUE AND INDICES OF TOTAL AGRICULTURAL AND FOOD PRODUCTION, AVERAGE 1961-65, ANNUAL 1965-74

COMMODITY	PRICE WEIGHT	AVERAGE 1961-65	1965	1966	1967	1968	1969	1970	1971	1972	1973	PRELIM. 1974
		DOLLARS ----- -1,000 METRIC TONS-----										
RICE, PADDY	57	986	945	954	1,145	1,348	1,374	1,514	1,658	1,375	1,295	1,544
MILLET AND SORGHUM	30	20	20	20	17	16	20	18	20	21	20	20
CORN	34	10	10	10	17	12	17	16	18	20	15	15
CASSAVA	22	313	328	289	391	429	403	430	445	450	445	450
SWEET POTATOES	40	54	51	63	73	76	66	74	77	80	80	85
TOBACCO	400	4	4	5	7	7	7	10	9	9	9	9
SESAME SEED	77	6	7	5	7	7	6	6	6	6	6	6
SPICES	571	39	39	43	51	47	72	68	67	68	67	68
COCOA BEANS	290	2	2	3	3	2	2	2	2	2	2	2
TEA	420	217	228	222	221	187	220	212	219	215	211	200
RUBBER	243	107	118	131	143	149	151	159	141	138	155	160
COPRA	70	280	265	212	191	194	201	183	195	190	105	150
MEATS	131	29	31	31	32	33	33	33	34	34	35	37
AGGREGATES OF PRODUCTION		----- -MILLION DOLLARS AT CONSTANT PRICES-----										
CROPS		228.3	232.1	231.9	252.1	249.1	279.2	284.1	291.6	273.4	264.6	279.3
LIVESTOCK		3.9	4.1	4.1	4.2	4.3	4.3	4.3	4.5	4.5	4.6	4.8
TOTAL AGRICULTURE		232.2	236.2	236.0	256.3	253.4	283.5	288.4	296.1	277.9	269.2	284.1
TOTAL FOOD		90.9	87.8	84.4	96.9	109.1	110.5	118.0	127.9	111.7	101.0	118.8
INDICES OF PRODUCTION		(1961-65 = 100)										
CROPS		100	102	102	110	109	122	124	128	120	116	122
TOTAL AGRICULTURE		100	102	102	110	109	122	124	128	120	116	122
TOTAL FOOD		100	97	93	107	120	122	130	141	123	111	131
PER CAPITA AGRICULTURE		100	97	95	100	97	107	106	107	99	93	96
PER CAPITA FOOD		100	93	87	98	107	107	111	118	101	89	103
INDEX OF POPULATION												
1961-65 POPULATION= 10,612,000		100.0	104.7	107.1	109.5	112.0	114.4	116.8	119.1	121.7	124.4	127.2

TABLE 23 --TAIWAN

PRODUCTION BY COMMODITY, VALUE AND INDICES OF TOTAL AGRICULTURAL AND FOOD PRODUCTION, AVERAGE 1961-65, ANNUAL 1965-74

COMMODITY	PRICE	AVERAGE										PRELIM.
	WEIGHT	1961-65	1965	1966	1967	1968	1969	1970	1971	1972	1973	1974
	DOLLARS	-1,000 METRIC TONS-										
WHEAT	96	30	23	29	24	17	10	4	2	2	1	1
RICE, PADDY	88	2,838	3,076	3,117	3,162	3,299	3,041	3,226	3,030	3,196	2,954	3,266
MILLET AND SORGHUM	83	10	12	14	17	13	12	13	14	21	22	28
CORN	78	36	41	52	64	51	45	57	57	71	85	95
PULSES	117	18	17	18	20	23	25	26	21	27	30	27
CASSAVA	17	235	265	264	299	342	316	308	288	324	328	366
SWEETPOTATOES	16	2,988	3,131	3,460	3,720	3,445	3,702	3,441	3,391	2,928	3,204	2,791
SUGARCANE	6	7,362	9,490	8,924	6,744	8,268	7,012	5,991	7,881	7,092	7,474	8,386
TOBACCO	487	17	16	15	18	21	21	21	17	16	18	17
JUTE	199	12	13	11	10	11	13	8	2	1	1	1
SOYBEANS	143	57	66	63	75	73	67	65	61	60	61	67
PEANUTS, IN SHELL	156	107	126	115	137	106	101	122	98	94	98	93
SESAME SEED	218	3	3	2	3	3	3	2	2	2	2	2
CITRONELLA OIL	1,500	3	3	3	2	1	1	1	1	1	1	1
VEGETABLES	28	902	968	963	1,052	1,209	1,465	1,685	1,765	1,704	1,881	2,079
CITRUS FRUIT	93	83	114	137	155	176	170	209	253	291	332	398
BANANAS	63	225	460	528	654	645	586	462	471	366	423	272
PINEAPPLES	29	197	231	270	296	311	325	338	358	334	328	326
OTHER FRUIT	55	80	110	112	157	184	170	208	278	271	345	484
TEA	394	20	21	22	24	24	26	28	27	26	29	24
MEATS	537	262	288	323	371	387	415	461	468	507	597	540
AGGREGATES OF PRODUCTION		- - - - - MILLION DOLLARS AT CONSTANT PRICES - - - - -										
CROPS		459.3	523.1	534.9	552.8	571.2	545.8	558.9	554.9	552.6	558.7	594.0
LIVESTOCK		140.8	154.7	173.5	199.2	207.8	222.9	247.6	251.3	272.3	320.6	290.0
TOTAL AGRICULTURE		600.1	677.8	708.4	752.0	779.0	768.7	806.5	806.2	824.9	879.3	884.0
TOTAL FOOD		581.8	659.1	690.2	731.7	757.1	745.7	783.7	786.9	806.7	858.9	866.0
INDICES OF PRODUCTION		(1961-65 = 100)										
CROPS		100	114	116	120	124	119	122	121	120	122	129
TOTAL AGRICULTURE		100	113	118	125	130	128	134	134	137	147	147
TOTAL FOOD		100	113	119	126	130	128	135	135	139	148	149
PER CAPITA AGRICULTURE		100	106	108	111	113	108	110	108	108	113	111
PER CAPITA FOOD		100	106	109	112	113	108	111	108	109	114	113
INDEX OF POPULATION		1961-65 POPULATION= 11,902,000										
		100.0	106.3	109.4	112.3	114.9	118.5	121.8	124.6	127.1	129.6	132.1

## PRODUCTION BY COMMODITY, VALUE AND INDICES OF TOTAL AGRICULTURAL AND FOOD PRODUCTION, AVERAGE 1961-65, ANNUAL 1965-74

COMMODITY	PRICE WEIGHT	AVERAGE 1961-65	1965	1966	1967	1968	1969	1970	1971	1972	1973	PRELIM.											
												1974											
DOLLARS												- - - - -1,000 METRIC TONS- - - - -											
RICE, PADDY	39	10,419	10,778	13,500	13,490	12,410	13,410	13,570	13,744	11,669	14,200	14,500	14,500										
CORN	44	815	1,021	1,122	1,212	1,508	1,700	1,950	2,200	1,320	2,350	2,400	2,400										
PULSES	99	89	125	132	122	184	152	143	185	195	210	250	250										
CASSAVA	11	1,789	1,475	1,892	2,062	2,611	3,079	3,431	3,000	3,200	3,800	4,000	4,000										
SUGARCANE	5	4,285	4,480	3,827	4,526	5,879	5,909	6,620	5,926	9,510	13,080	14,000	14,000										
TUBACCO	332	59	76	88	78	90	92	95	99	99	98	105	105										
COTTON	138	16	20	30	27	39	15	9	32	21	17	17	17										
JUTE	124	8	9	11	7	4	5	6	6	6	6	6	6										
KENAF	117	303	529	661	421	316	373	390	410	435	570	400	400										
COTTONSEED	39	32	40	59	54	78	29	18	64	42	34	33	33										
SOYBEANS	99	27	19	38	53	45	61	70	74	83	93	120	120										
PEANUTS, IN SHELL	91	117	131	220	132	158	124	125	200	220	240	250	250										
SESAME SEED	192	15	18	20	23	22	19	20	22	22	29	30	30										
CASTOR BEANS	94	40	32	42	38	39	37	43	35	25	40	42	42										
RUBBER	332	201	217	218	219	258	282	287	310	326	384	363	363										
COPKA	219	202	212	194	195	200	202	202	202	202	250	250	250										
AGGREGATES OF PRODUCTION												- - - - -MILLION DOLLARS AT CONSTANT PRICES- - - - -											
CROPS		682.6	747.5	889.6	859.3	858.8	916.3	945.8	982.3	891.5	1,111.4	1,115.6	1,115.6										
LIVESTOCK		0.0	0.0	0.0	0.0	0.0	0.0	0.0	0.0	0.0	0.0	0.0	0.0										
TOTAL AGRICULTURE		682.6	747.5	889.6	859.3	858.8	916.3	945.8	982.3	891.5	1,111.4	1,115.6	1,115.6										
TOTAL FOOD		553.7	581.5	701.3	703.2	696.6	742.4	767.5	790.1	693.5	877.9	906.5	906.5										
INDICES OF PRODUCTION												(1961-65 = 100)											
CROPS		100	110	130	126	126	134	139	144	131	163	163	163										
TOTAL AGRICULTURE		100	110	130	126	126	134	139	144	131	163	163	163										
TOTAL FOOD		100	105	127	127	126	134	139	143	125	159	164	164										
PER CAPITA AGRICULTURE		100	103	118	111	108	111	111	111	98	118	114	114										
PER CAPITA FOOD		100	99	116	112	108	111	111	111	94	115	115	115										
INDEX OF POPULATION												1961-65 POPULATION= 29,734,000											
		100.0	106.3	109.7	113.3	117.0	120.9	125.0	129.1	133.5	138.1	142.8	142.8										

PRICE



TABLE 25--VIETNAM, REPUBLIC OF

PRODUCTION BY COMMODITY, VALUE AND INDICES OF TOTAL AGRICULTURAL AND FOOD PRODUCTION, AVERAGE 1961-65, ANNUAL 1965-74

COMMODITY	PRICE	AVERAGE	1965	1966	1967	1968	1969	1970	1971	1972	1973	PRELIM.
	WEIGHT	1961-65										1974
	DOLLARS		-1,000 METRIC TONS-									
RICE, PADDY	35	5,029	4,822	4,336	4,688	4,366	5,115	5,716	6,324	6,348	6,600	7,100
CORN	54	39	44	35	34	32	31	31	31	31	52	54
PULSES	102	11	12	14	20	13	12	11	11	14	10	10
CASSAVA	27	296	236	280	262	260	233	216	216	247	330	400
SWEET POTATOES	32	278	278	246	254	235	226	220	220	241	280	300
SUGARCANE	4	983	1,093	936	770	401	321	336	440	331	530	550
TOBACCO	756	8	8	7	8	8	8	8	8	9	10	11
SOYBEANS	129	4	4	8	6	7	6	7	7	7	11	12
PEANUTS, IN SHELL	95	32	33	34	34	32	34	32	32	39	45	50
TEA	748	5	6	5	4	5	5	6	6	6	6	6
RUBBER	225	74	65	49	43	34	28	33	36	20	38	25
COPRA	142	38	37	32	33	28	25	29	29	29	29	29
AGGREGATES OF PRODUCTION	-MILLION DOLLARS AT CONSTANT PRICES-											
CROPS		235.3	226.1	203.0	213.6	197.2	220.3	242.9	265.3	265.5	286.7	303.8
LIVESTOCK		0.0	0.0	0.0	0.0	0.0	0.0	0.0	0.0	0.0	0.0	0.0
TOTAL AGRICULTURE		235.3	226.1	203.0	213.6	197.2	220.3	242.9	265.3	265.5	286.7	303.8
TOTAL FOOD		208.9	201.0	183.0	194.9	179.8	204.3	225.0	246.7	249.7	266.0	285.4
INDICES OF PRODUCTION	(1961-65 = 100)											
CROPS		100	96	86	91	84	94	103	113	113	122	129
TOTAL AGRICULTURE		100	96	86	91	84	94	103	113	113	122	129
TOTAL FOOD		100	96	88	93	86	98	108	118	120	127	137
PER CAPITA AGRICULTURE		100	91	80	82	74	81	86	92	90	94	97
PER CAPITA FOOD		100	91	81	84	76	84	90	96	95	98	103
INDEX OF POPULATION												
1961-65 POPULATION= 15,316,000		100.0	105.2	108.0	110.8	113.7	116.7	119.7	122.8	126.0	129.3	132.7

**UNITED STATES DEPARTMENT OF AGRICULTURE  
WASHINGTON, D.C. 20250**

---

**OFFICIAL BUSINESS  
PENALTY FOR PRIVATE USE, \$300**

**POSTAGE AND FEES PAID  
U.S. DEPARTMENT OF  
AGRICULTURE  
AGR 101  
FIRST CLASS**



END