



AgEcon SEARCH
RESEARCH IN AGRICULTURAL & APPLIED ECONOMICS

The World's Largest Open Access Agricultural & Applied Economics Digital Library

This document is discoverable and free to researchers across the globe due to the work of AgEcon Search.

Help ensure our sustainability.

Give to AgEcon Search

AgEcon Search

<http://ageconsearch.umn.edu>

aesearch@umn.edu

*Papers downloaded from **AgEcon Search** may be used for non-commercial purposes and personal study only. No other use, including posting to another Internet site, is permitted without permission from the copyright owner (not AgEcon Search), or as allowed under the provisions of Fair Use, U.S. Copyright Act, Title 17 U.S.C.*

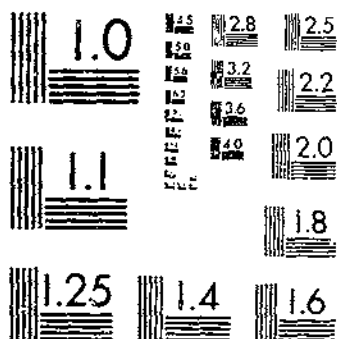
SB 402 (1967)
FRESH FRUIT AND

USDA STATISTICAL BULLETINS
VEGETABLE PRICES, 1966

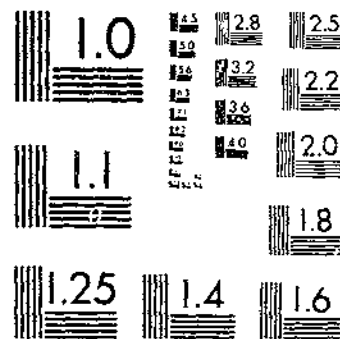
UPDATA

1 OF 1

START



MICROCOPY RESOLUTION TEST CHART
NATIONAL BUREAU OF STANDARDS-1963-A



MICROCOPY RESOLUTION TEST CHART
NATIONAL BUREAU OF STANDARDS-1963-A

R 630.5 U 53-13

402

REFERENCE
DO NOT LOAN



FRESH FRUIT and VEGETABLE PRICES • 1966

UNIVERSITY OF CALIFORNIA LIBRARY
JUN 10 1967



WHOLESALE
CHICAGO AND
NEW YORK CITY

AUCTION
CHICAGO AND
NEW YORK CITY

F.O.B.
LEADING
SHIPPING POINTS

STATISTICAL BULLETIN No. 402
MAY 1967

UNITED STATES DEPARTMENT OF AGRICULTURE
Consumer and Marketing Service
Fruit and Vegetable Division
Washington, D. C.

P R E F A C E

Prices listed in this report represent sales in wholesale lots of certain fresh fruits and vegetables at New York City, Chicago and at important shipping points where market news field stations were located during 1966. The report also includes monthly average auction prices for important fresh fruits compiled by the Economic Research Service from information contained in the New York Daily Fruit Reporter and Chicago Daily Fruit and Vegetable Reporter.

Wholesale prices for private sales at New York City and Chicago are simple averages of representative prices for each Tuesday. In arriving at the Tuesday prices, local market reporters consider estimated volume of sales at different price levels, quality, condition, and other factors. These wholesale prices in most cases represent private sales in less than carlot quantities. Generally they represent sales made by the first seller on the wholesale market. In a few instances, prices representing sales in carlots or sales at auction are reported, but these are indicated in the body of the report. Prices are for stock of generally good merchantable quality and condition, unless otherwise stated. Grades are shown where quoted by grade.

Prices reported for important shipping points or areas are simple averages of the mid-points of the daily range throughout the year as reported by local market news offices. They refer to sales in straight or mixed carloads or truckloads, unless otherwise noted. An average shipping point prices for a month generally is shown only when there were quotations for six or more days during that month.

"Sales f.o.b." refer to transactions in which the buyer assumes responsibility for the commodity at shipping point. "Delivered sales, shipping point basis", refer to transactions in which the seller assumes responsibility for delivery to the market. Prices for the latter group of transactions are adjusted to a shipping point basis by making appropriate deductions for transportation and protective services.

The report includes a table of estimated value per carlot of fresh fruits and vegetables for 1965 and 1966 by months, at New York City and Chicago (Table 4). These estimates are intended to indicate a comparative trend rather than an absolute value per car. They do not include prices for produce sold in other sections of the country, nor do they include commodities sold on these markets but not included in this price summary.

Major changes were made in 1960 and 1966 in the loadings per carlot in connection with the transportation reports, compiled for fruits and vegetables to reflect current loading practices. These higher loading factors were used in computing the estimated value per carlot and are reflected in higher values per carlot.

Estimated value per carlot is computed by multiplying the monthly prices at New York City and Chicago for various commodities shown in this report by the number of packages per carlot for respective commodities. These computed carlot values are then weighted by the monthly unloads adjusted to carlot equivalents.

The indices of wholesale value per carlot (Table 5) were computed from the wholesale value information described in the preceding paragraphs.

Prepared by Market News Branch
Fruit and Vegetable Division
Consumer and Marketing Service

CONTENTS

Page	Page		
Introduction	2	Table 2.--Continued	
Table 1.--Wholesale prices of specified fruits and vegetables at New York City and Chicago, each month by market, origin and description, 1966	4	Deciduous Fruits	
Berries		Apples	12
Blackberries	4	Apricots	12
Blueberries	4	Cherries	13
Cranberries	4	Grapes	13
Raspberries	4	Nectarines	13
Strawberries	4	Peaches	13
Citrus Fruits		Pears	13
Grapefruit	4	Plums	14
Limes	4	Prunes, Fresh	14
Oranges	4	Table 3.--Average prices of specified fruits and vegetables at leading shipping points, each month, by description of sale, 1966 .	15
Tangelos	5	Berries	
Tangerines	5	Blueberries	15
Other Fruits		Raspberries	15
Apples	5	Strawberries	15
Avocados	5	Citrus Fruits	
Peaches	5	Grapefruit	16
Prunes, Fresh	6	Lemons	16
Miscellaneous Melons		Oranges	16
Cantaloups	6	Other Fruits	
Honeydew Melons	6	Apples	16
Watermelons	6	Apricots	17
Vegetables		Cherries	17
Asparagus	7	Grapes	18
Beans, Lima	7	Nectarines	18
Beans, Snap	7	Peaches	18
Beets	7	Pears	19
Broccoli	7	Plums	19
Brussels Sprouts	7	Prunes, Fresh	19
Cabbage	7	Melons	
Carrots	8	Cantaloups	20
Cauliflower	8	Honeydews	20
Celery	8	Miscellaneous Melons	20
Corn, Sweet	8	Watermelons	20
Cucumbers	8	Vegetables	
Eggplant	9	Asparagus	21
Endive-Chicory	9	Beans, Lima	21
Escarole	9	Beans, Snap	21
Kale	9	Broccoli	21
Lettuce	9	Cabbage	22
Mushroom	9	Carrots	22
Onions, Dry	9	Cauliflower	22
Peas, Green	9	Celery	23
Peppers, Green	10	Corn, Sweet	23
Potatoes	10	Cucumbers	23
Radishes	10	Eggplant	23
Rhubarb	10	Escarole	24
Spinach	10	Lettuce	24
Sweetpotatoes	11	Onions, Dry	24
Tomatoes	11	Peppers, Green	25
Table 2.--Auction prices of specified citrus and deciduous fruits in New York City and Chicago, each month, by market, origin and description, 1966	12	Potatoes	25
Citrus Fruits		Spinach	27
Grapefruit	12	Sweetpotatoes	27
Lemons	12	Tomatoes	28
Oranges	12	Table 4.--Computed wholesale values per carlot of domestic fresh fruits and vegetables, New York City and Chicago, by months, 1965-66	30
Tangelos	12	Table 5.--Index of wholesale value of fresh fruits and vegetables at New York City and Chicago, by months, 1947-1966	31
Tangerines	12		

Table 1.--Wholesale prices of specified fruits and vegetables at New York City and Chicago, each month by market, origin, and description, 1966 1/

BERRIES

Market, Origin and description	Jan.	Feb.	Mar.	Apr.	May	June	July	Aug.	Sept.	Oct.	Nov.	Dec.
- - - Dollars Per Unit - - -												
Blackberries												
New York:												
N.J., Per pint	-	-	-	-	-	-	.38	.40	-	-	-	-
Blueberries												
New York:												
<u>Cultivated, per pint--</u>												
N.C.,	-	-	-	-	.50	.32	-	-	-	-	-	-
N.J.,	-	-	-	-	-	-	.32	.33	.50	-	-	-
Chicago:												
<u>Cultivated, per pint--</u>												
Ill.,	-	-	-	-	-	-	.35	-	-	-	-	-
Mich.,	-	-	-	-	-	-	.38	.32	.32	-	-	-
N.C.,	-	-	-	-	-	.47	.38	-	-	-	-	-
Granberries												
New York:												
<u>24-1-lb. film bags, carton--</u>												
Mass., Early varieties	-	-	-	-	-	-	-	-	5.50	5.62	-	-
Late Howe	-	-	-	-	-	-	-	-	-	5.75	6.15	6.25
Chicago:												
<u>24-1-lb. film bags, carton--</u>												
Mass., Early varieties	-	-	-	-	-	-	-	-	5.50	5.44	5.35	-
Late Howe	6.25	-	-	-	-	-	-	-	-	-	5.92	5.98
Wis., Seattle	-	-	-	-	-	-	-	-	-	5.44	5.56	-
Raspberries												
New York:												
Calif., Reds, 1/2-pint	-	-	-	-	.50	.61	.60	.52	.51	.50	.58	-
Strawberries												
New York:												
<u>Various varieties, per pint--</u>												
Calif.,	-	-	.55	.42	.43	.48	.40	.52	.42	.48	.61	-
Fla.,42	.42	.37	.30	-	-	-	-	-	-	-	.60f
Chicago:												
<u>Various varieties, per pint--</u>												
Calif.,	-	-	.56	.37	.40	.32	-	.36	.32	.44	.48	-
La.,	-	-	-	.29	.31	-	-	-	-	-	-	-
Mexico,30	.35	.40	-	-	-	-	-	-	-	-	.35

CITRUS-FRUIT 2/

Limes												
New York:												
<u>10-lb. flat--</u>												
Fla., Persian, various sizes	4.06	2.10	2.57	4.84	5.70	2.28	2.06	1.26	2.05	1.39	2.18	3.42
Chicago:												
<u>10-lb. flat--</u>												
Fla., Persian, various sizes	3.54	2.00	2.94	5.35	5.44	1.90	1.64	1.30	2.62	1.96	2.26	3.40
Grapefruit												
Chicago:												
<u>Various varieties</u>												
<u>4/5-bushel crates & cartons--</u>												
Fla., Indian River Dist.,	3.42	3.85	4.19	3.90	4.18	4.38	-	-	-	3.72	3.27	3.65
Interior Dist.,	2.38	2.74	2.25	2.59	3.08	3.25	-	-	-	3.37	2.44	2.16
Oranges												
Chicago:												
<u>Various varieties</u>												
<u>4/5-bushel crates & cartons--</u>												
Fla.,	2.41	3.02	2.61	2.81	3.12	3.28	3.25	-	-	2.85	2.43	2.28

1/ Prices shown are simple average of representative prices for Tuesday of each week during the Month.

2/ For auction prices see Table 2.

f - Few

Table 1.--Continued

CITRUS FRUITS 2/--CONTINUED

Market, Origin and description	Jan.	Feb.	Mar.	Apr.	May	June	July	Aug.	Sept.	Oct.	Nov.	Dec.
	- - - Dollars Per Unit - - -											
Tangerines												
Chicago:												
<u>4/5-bushel crates & cartons--</u>												
Fla.,	3.15	-	-	-	-	-	-	-	-	-	3.48	2.45
Tangerines												
Chicago:												
<u>4/5-bushel crates & cartons--</u>												
Fla.,	3.68	-	-	-	-	-	-	-	-	-	4.00	3.60
OTHER FRUITS												
Apples 2/												
New York:												
<u>U.S.No. 1 or better, 2 1/2-in. up, unless stated</u>												
<u>Eastern box & 1-1/8 bushel carton--</u>												
N.Y., Hud.Vly., Cortland	2.04	-	-	-	-	-	-	-	2.60	2.44	2.36	2.65
Golden Delicious	3.41	3.41	3.38	-	-	-	-	-	-	3.82	3.46	3.58
Red Delicious	2.88	2.62	-	-	-	-	-	-	-	4.00	3.53	3.44
<u>Carton cell pack, 100-120s, unless stated--</u>												
N.Y., Hud.Vly., McIntosh	3.19	3.22	-	-	-	-	-	5.35	5.25	4.50	4.44	4.72
New England, McIntosh, U.S. Fancy	4.12	4.17	3.90	-	-	-	-	-	5.25	4.95	5.03	5.00
<u>Carton cell pack, USFancy, 100-120s, G.A. Storage--</u>												
N.Y., Hud.Vly., McIntosh	-	-	3.75	3.78	3.94	4.22	4.00	-	-	-	-	-
New England, McIntosh	-	4.94	5.00	5.12	5.81	5.26	5.25	-	-	-	-	-
Chicago:												
<u>Cartons, USFancy, film bags, 2 1/2-in. up, 10-4-lb.--</u>												
Mich., Jonathan	2.65	2.40	2.09	2.12	-	-	-	-	3.00	2.69	2.98	3.12
McIntosh	2.69	2.46	1.94	-	-	-	-	-	2.75	2.56	2.94	2.90
Red Delicious	3.50	3.57	3.12	-	-	-	-	-	-	3.70	3.80	3.78
<u>Cartons, USFancy, film bags, 2 1/2-in. up, 12-3 lb. G.A. Storage--</u>												
Mich., Jonathan	-	3.35	3.09	3.42	3.86	-	-	-	-	-	-	-
McIntosh	-	3.35	3.12	3.11	3.58	-	-	-	-	-	-	-
Red Delicious	-	-	-	4.35	4.50	-	-	-	-	-	-	-
Avocados												
New York:												
<u>Various varieties, flats(approx. 13-lbs.)--</u>												
Calif.,	-	4.17	3.80	3.78	3.75	3.79	3.56	3.70	3.79	3.68	3.88	3.17
Fla.,	-	-	-	-	-	-	5.00	5.50	4.44	3.50	2.91	2.48
Chicago:												
<u>Various varieties, flats(approx. 13-lbs.)--</u>												
Calif.,	3.75	3.80	3.71	3.59	3.47	3.68	3.55	3.51	3.91	4.59	4.02	3.29
Fla.,	-	-	-	-	-	-	-	-	3.85	3.52	2.92	2.32
Peaches 2/												
New York:												
<u>U.S. No. 1 or better</u>												
<u>2-in. up, unless stated</u>												
<u>3/4-bushel basket or crate--</u>												
Ga., Coronet	-	-	-	-	-	4.62	-	-	-	-	-	-
Dixired	-	-	-	-	-	4.75	-	-	-	-	-	-
Keystone	-	-	-	-	-	4.25	4.25	-	-	-	-	-
Southland	-	-	-	-	-	-	3.95	-	-	-	-	-
N.J., No grade mark--												
Redhaven	-	-	-	-	-	-	-	3.75	4.50	-	-	-
Rio Oro Gem	-	-	-	-	-	-	-	-	5.50	-	-	-
Sunhigh	-	-	-	-	-	-	-	-	4.62	-	-	-
Pa., Redhaven	-	-	-	-	-	-	-	-	3.88	-	-	-
Rio Oro Gem	-	-	-	-	-	-	-	-	-	6.00	-	-
Sunhigh	-	-	-	-	-	-	-	-	4.00	-	-	-
S.C., Coronet	-	-	-	-	-	4.00	3.62	-	-	-	-	-
Dixired	-	-	-	-	-	4.50	-	-	-	-	-	-
Keystone	-	-	-	-	-	-	-	3.58	-	-	-	-
Southland	-	-	-	-	-	-	-	4.62	-	-	-	-

2/ For auction prices see Table 2.

Table 1.--Continued

OTHER FRUITS--CONTINUED

Market, Origin and description	Jan.	Feb.	Mar.	Apr.	May	June	July	Aug.	Sept.	Oct.	Nov.	Dec.
Dollars Per Unit												
<u>Peaches 2/--Continued</u>												
Chicago:												
U.S. No. 1 or better												
2-in. up, unless stated												
3/4-bushel basket or crate--												
Ga., Coronet	-	-	-	-	-	4.18	4.00	-	-	-	-	-
Dixired	-	-	-	-	-	4.65	-	-	-	-	-	-
Keystone	-	-	-	-	-	4.00	3.90	-	-	-	-	-
Southland	-	-	-	-	-	-	3.58	-	-	-	-	-
Mich., Redhaven	-	-	-	-	-	-	-	4.00	-	-	-	-
S.C., Coronet	-	-	-	-	-	4.38	-	-	-	-	-	-
Dixired	-	-	-	-	-	4.25	-	-	-	-	-	-
Keystone	-	-	-	-	-	4.25	4.17	-	-	-	-	-
Southland	-	-	-	-	-	-	4.75	3.50	-	-	-	-
Sullivan Elberta	-	-	-	-	-	-	4.50	3.50	-	-	-	-
<u>Prunes, Fresh 2/</u>												
New York:												
1/2-bushel basket or carton--												
Northwest, Early Italian type ...	-	-	-	-	-	-	-	4.00	-	-	-	-
Italian type	-	-	-	-	-	-	-	4.50	3.96	4.00	-	-
Chicago:												
1/2-bushel basket or carton--												
Northwest, Early Italian type ..	-	-	-	-	-	-	-	4.50	-	-	-	-
Italian type	-	-	-	-	-	-	-	4.25	4.17	3.55	-	-
<u>MELONS</u>												
<u>Cantaloups</u>												
New York:												
Jumbo crate - 36r--												
Ariz.,	-	-	-	-	-	7.42	7.75	-	-	-	-	-
Calif.,	-	-	-	-	-	8.00	9.38	9.70	9.44	11.12	8.95	-
Mexico,	-	16.75	16.75	15.00	14.70	11.00	-	-	-	-	-	-
Chicago:												
Jumbo Crate - 36r--												
Ariz.,	-	-	-	-	-	6.97	8.00	-	-	-	-	-
Calif.,	-	-	-	-	-	7.84	9.50	9.38	9.31	-	-	-
Texas,	-	-	-	-	8.00	8.00	-	-	-	-	-	-
Mexico,	-	14.90	12.62	12.80	10.50	-	-	-	-	-	-	-
<u>Honeydews</u>												
New York:												
Standard flat crate, 9-12s, unless stated--												
Calif.,	-	-	-	-	-	7.00	4.56	4.70	5.00	4.67	-	-
Texas,	-	-	-	-	-	7.00	4.38	-	-	-	-	-
ctns, approx. 2/3-flat crt., 5-8s	-	-	-	-	-	4.12	2.50	-	-	-	-	-
Mexico, standard flat crate, 12s..	-	-	-	-	6.58	-	-	-	-	-	-	-
Chicago:												
Standard flat crate 9-12s, unless stated--												
Calif.,	-	-	-	-	-	6.50	4.06	4.60	5.04	5.02	-	-
Texas,	-	-	-	-	-	5.72	4.00	-	-	-	-	-
cartons, 5-8s	-	-	-	-	-	3.50	-	-	-	-	-	-
Mexico,	-	-	-	-	6.92	-	-	-	-	-	-	-
<u>Watermelons</u>												
New York:												
Per Pound--												
Various states, Charleston Gray,												
20-25-lb. Av.	-	-	-	.0925	.0583	.0373	.0431	.0381	.0338	-	-	-
25-32-lb. Av.	-	-	-	-	-	.0425	.0475	.0440	.0388	-	-	-
Mexico, Peacock, flat cartons	1300	.1125	.1162	.1125	.0925	-	-	-	-	-	-	-
Chicago:												
Per Pound--												
Mo., Charleston Gray, 20-25-lb. Av.	-	-	-	-	-	-	.0475	.0369	-	-	-	-
Texas, Charles Gray, 20-25-lb. Av.	-	-	-	-	-	-	.0425	.0400	-	-	-	-
30-lb. Av.	-	-	-	-	-	.0475	.0458	.0370	.0310	-	-	-
Mexico, Peacock, 12-15-lb. Av. ...	-	.1150	.1035	.0962	.0775	-	-	-	-	-	-	-

2/ For auction prices see Table 2.

Table 1.--Continued

VEGETABLES

Market, Origin and description	Jan.	Feb.	Mar.	Apr.	May	June	July	Aug.	Sept.	Oct.	Nov.	Dec.
	- - - Dollars Per Unit - - -											
Asparagus												
New York:												
Pyramid crate--												
Calif., Loose, large	-	21.00	14.05	7.00	10.00	-	-	-	-	-	-	-
N. J., Bunched, large	-	-	-	-	7.43	6.75	5.50	-	-	-	-	-
Chicago:												
Pyramid crate--												
Calif., 12-bchs., select	-	-	10.00	7.00	-	-	-	-	-	-	-	-
12-bchs., extra fancy	-	-	8.12	7.00	-	-	-	-	-	-	-	-
Loose, large	-	-	12.58	7.84	-	-	-	-	-	-	-	-
Ill., Crate, 12-1-lb. bch.	-	-	-	-	3.58	3.28	2.75	-	-	-	-	-
Beans, Lima												
New York:												
Bushel hamper--												
Various Eastern States	-	-	-	-	4.75	-	-	4.50	4.69	4.50	-	-
Chicago:												
Mich., 12-qt. basket	-	-	-	-	-	-	-	-	2.12	-	-	-
Beans, Snap Green												
New York:												
Bushel hamper--												
Fla., Harvester	4.39	8.31	7.65	4.88	5.12	-	-	-	-	3.40	6.12	7.31
N. J., Harvester	-	-	-	-	-	3.50	6.00	3.78	3.62	-	-	-
Va., Harvester	-	-	-	-	-	4.50	-	-	4.50	3.92	4.25	-
Chicago:												
Bushel hamper--												
Fla., Harvester	4.81	7.40	7.44	5.15	4.50	-	-	-	-	-	7.08	7.00
Mich., Various varieties	-	-	-	-	-	-	-	4.40	3.94	4.00	-	-
Va., Harvester	-	-	-	-	-	4.25	5.00	-	-	-	-	-
Beets												
New York:												
Bunched--												
N. J., Per Bunch	-	-	-	-	-	.0850	.0869	.0942	.1195	.1100	.1062	-
Bushel basket, Topped	1.38	1.38	1.31	1.19	-	-	-	-	-	-	-	-
Texas, 1-3/4 bushel crate, 3-dozen.	-	4.08	3.60	3.81	4.00	-	-	-	-	-	-	4.25
Chicago:												
Bunched--												
Ill., Crates, 18-bchs.	-	-	-	-	-	1.65	1.31	1.78	1.50	1.50	1.25	-
Texas, Crates, 3-dozen	3.84	4.06	3.48	3.59	4.10	-	-	-	-	-	3.95	3.25
Broccoli												
New York:												
14-bunches--												
Calif., 1/2-crates,	4.47	4.39	3.68	3.21	4.09	3.94	4.67	4.55	4.88	4.04	3.63	5.08
Texas, 1-2/5-bu. crts.,	-	3.60	2.98	-	-	-	-	-	-	-	-	-
Chicago:												
14-bunches--												
Calif., 1/2-crate,	4.26	4.44	3.56	3.14	3.45	3.55	3.61	4.02	3.81	3.52	3.69	4.15
Brussel Sprouts												
New York:												
Calif., Repacks locally, 10-oz. cup	.28	.26	.26	.26	.25	-	-	-	-	-	.22	.24
N.Y.L.I., 10-oz. cup25	.20	-	-	-	-	-	-	.26	.20	.18	.18
Chicago:												
Calif., 25-lb. drums	6.75	6.17	-	-	-	-	-	-	5.94	6.06	5.53	5.18
Cabbage												
New York:												
Danish type--												
N.Y., 50-lb. sack	1.40	2.47	2.12	2.44	-	-	-	-	-	2.25	2.44	2.70
Domestic Round type												
1-3/4 bushel crate, unless stated--												
Fla.,	2.44	4.50	3.69	3.16	2.74	-	-	-	-	-	-	3.70
N.C.,	-	-	-	-	2.50	2.75	-	-	-	-	4.00	-
N.J., Various used crates (approx. 50-lb.)	-	-	-	-	-	2.15	2.38	2.29	2.30	2.09	2.58	3.25
S.C.,	-	-	-	-	2.56	-	-	-	-	-	-	-

Table 1.--Continued

VEGETABLES--CONTINUED

Market, Origin and description	Jan.	Feb.	Mar.	Apr.	May	June	July	Aug.	Sept.	Oct.	Nov.	Dec.
	Dollars Per Unit											
<u>Cabbage--Continued</u>												
Chicago:												
<u>Danish type--</u>												
Wis., 50-lb. sack	1.91	3.22	3.02	3.00	-	-	-	-	2.62	2.25	2.25	3.09
<u>Domestic Round type</u>												
<u>1-3/4-bushel crate, unless stated--</u>												
Ill., Various used crates (approx. 50-lbs.)	-	-	-	-	-	2.52	3.10	3.34	3.91	3.45	3.21	-
Texas,	2.84	4.19	3.52	3.16	2.46	-	-	-	-	-	3.68	3.31
<u>Carrots</u>												
New York:												
<u>Topped, washed, 48-1-lb. film bags--</u>												
Calif., Crate	5.22	5.96	5.29	5.42	6.58	5.89	5.30	4.83	4.78	4.50	4.58	4.97
Texas, Mesh, master container	3.86	4.84	3.89	4.42	5.10	-	-	-	-	-	3.88	3.72
Canada, Film, master container	3.21	-	-	-	-	-	-	3.07	3.04	2.96	2.94	2.85
Chicago:												
<u>Topped, washed, 48-1-lb. film bags--</u>												
Calif., Crate	4.75	-	-	-	6.62	6.07	5.45	5.06	4.76	4.50	4.40	4.64
Texas, Mesh, master container	3.88	4.71	4.00	4.26	4.98	4.25	-	-	-	-	3.17	3.17
<u>Cauliflower</u>												
New York:												
Calif., Cartons, film wrpd., 12s ..	4.68	4.84	4.48	3.96	5.04	4.74	5.00	4.25	3.50	3.40	3.54	4.88
N.Y., (Catskill Sec.) Catskill type crates and cartons, 12s	-	-	-	-	-	-	-	4.25	3.94	3.62	3.88	-
N.Y.-L.I., Long Island type crates, 12s ..	-	-	-	-	-	-	-	-	3.50	3.10	3.18	2.88
Chicago:												
Calif., Cartons, film wrpd., 12s ..	4.36	4.48	4.18	3.68	4.40	4.09	3.92	4.39	3.72	3.64	3.70	3.82
Mich., Long Island type crate, 12s ..	-	-	-	-	-	-	-	-	3.15	2.92	2.46	-
Texas, Long Island type crate, 12s ..	3.62	4.10	-	-	-	-	-	-	-	-	-	3.75
<u>Celery</u>												
New York:												
<u>Pascal type - 16-inch crate--</u>												
Calif., 2-3 dozen	6.31	5.80	5.46	3.85	6.23	7.02	7.19	6.15	5.02	4.00	4.75	4.62
Fl., 2-4 dozen	4.39	5.04	4.36	2.81	4.35	5.84	4.90	-	-	-	3.50	3.44
I. S. Co., 2-3 dozen	-	-	-	-	-	-	4.54	4.20	3.51	2.75	-	-
Chicago:												
<u>Pascal type - 16-inch crate--</u>												
Calif., 2-3 dozen	5.66	5.78	4.96	3.39	5.56	6.75	6.59	5.78	4.44	3.69	4.53	4.02
Fl., 2-4 dozen	4.59	4.70	4.21	2.96	4.50	5.78	-	-	-	-	3.65	3.75
Mich., 2-4 dozen	-	-	-	-	-	-	5.67	4.50	3.84	2.75	-	-
<u>Corn, Sweet</u>												
New York:												
<u>Yellow--</u>												
Fl., 5-dozen, crate	4.92	5.25	5.93	5.30	3.15 ^{3/4}	3.16 ^{2/3}	4.30 ^{3/4}	-	-	4.12	4.05	4.26
N.Y., Crates (approx. 4 1/2-5-dozen) ...	-	-	-	-	-	-	-	2.48	2.60	-	-	-
Chicago:												
<u>Yellow, 5-dozen, crate--</u>												
Fl.,	4.96	4.45	5.50	5.85	3.15	3.28	4.62	-	-	4.58	3.68	4.38
Ill.,	-	-	-	-	-	-	2.12	1.98	1.67	-	-	-
<u>Cucumbers</u>												
New York:												
<u>Bushel basket--</u>												
Fl.,	6.98	9.00	18.00	5.25	5.45	6.12	-	-	-	3.98	6.00	7.31
N.C.,	-	-	-	-	-	9.50	5.06	-	3.75	-	-	-
N.Y.-L.I.,	-	-	-	-	-	-	4.50	3.84	2.75	-	-	-
S.C.,	-	-	-	-	6.50	7.54	5.25	-	3.50	3.75	6.00	-
British West Indies	8.62	12.00	-	-	-	-	-	-	-	-	-	-
Chicago:												
<u>Bushel basket--</u>												
Fl.,	6.31	-	-	5.70	5.20	6.25	-	-	-	4.00	5.32	6.94
Ill.,	-	-	-	-	-	8.50	5.50	2.35	2.84	-	-	-
Mexico,	8.38	9.58	11.50	-	-	-	-	-	-	-	-	-

3/ 4 1/2-5 dozen crate

Page 1--Continued

VEGETABLES--CONTINUED

State, Origin and description	Jan.	Feb.	Mar.	Apr.	May	June	July	Aug.	Sept.	Oct.	Nov.	Dec.
	Dollars Per Unit											
Asplant												
Asplant basket--												
Fla.,	3.81	5.31	6.20	3.72	3.95	4.81	5.25	-	-	5.62	4.25	2.88
N.J.,	-	-	-	-	-	-	5.25	3.65	2.84	3.94	-	-
Asplant basket--												
Fla.,	3.81	4.50	5.56	3.66	4.30	4.56	-	-	-	-	4.60	3.31
Ill.,	-	-	-	-	-	-	4.25	3.62	2.31	-	-	-
Endive-Chicory												
New York:												
1-1/9 bushel crate--												
Fla.,	2.35	3.75	2.55	1.75	2.70	5.00	-	-	-	2.50	2.30	1.88
N.J.,	-	-	-	-	-	2.82	2.47	1.88	1.47	1.19	1.25	-
Macarole												
New York:												
1-1/9 bushel crate--												
Fla.,	2.03	3.88	2.06	1.78	2.45	5.00	-	-	-	2.50	2.40	1.88
N.J.,	-	-	-	-	-	1.12	2.06	2.00	1.66	1.22	1.32	-
Kale												
New York:												
N.J., Various used crates	-	-	-	-	1.50	1.17	1.16	1.31	1.94	1.72	1.40	-
Va., bushel basket	1.38	-	-	-	-	-	-	-	-	-	1.62	1.25
Lettuce												
New York:												
Iceberg type - 24 heads, carton--												
Ariz.,	5.31	-	3.58	3.85	2.64	3.25	-	-	-	-	3.90	2.54
Calif.,	5.54	5.15	4.30	3.85	2.79	3.51	5.19	4.86	4.69	4.06	4.09	2.54
Big Boston type - 24 heads, Eastern Boston crate--												
Fla.,	4.08	4.75	2.88	3.12	2.50	-	-	-	-	-	2.94	2.81
N.J.,	-	-	-	-	2.17	1.13	1.34	3.00	-	1.97	2.54	-
Romaine type - 1-1/9 bushel crate--												
Fla.,	3.21	4.08	3.69	2.30	2.00	-	-	-	-	-	2.10	2.16
N.J.,	-	-	-	-	1.38	.94	1.25	2.28	1.46	1.10	1.92	-
Chicago:												
Iceberg type - 24 heads, carton--												
Ariz.,	4.60	4.85	3.50	3.79	2.20	-	-	-	-	5.00	3.04	2.49
Calif.,	4.95	5.39	3.83	3.56	2.45	3.11	4.54	4.31	3.75	3.78	3.56	2.52
Mushrooms												
New York:												
Extra Fancy and Special--												
Pa., 4-quart basket	1.54	1.62	1.57	1.55	1.64	1.73	2.04	2.50	1.78	1.72	1.67	1.68
Chicago:												
Ill., 1-pound carton72	.72	.72	.72	.73	.72	.72	.72	.72	.72	.72	.72
Onions, Dry												
New York:												
50-lb. sack--												
Ida-Ore., Yellow Spanish, large ..	2.53	2.90	3.43	5.60	-	-	-	3.15	3.18	3.20	3.83	4.08
N.Y. West Sect., Yellow Globe, medium	1.16	1.86	1.64	2.20	3.30	1.55	-	3.12	2.77	-	2.80	2.90
Yellow Globe, large	1.54	1.92	2.03	3.92	4.24	2.15	-	2.87	2.65	-	-	3.39
Texas, Yellow Granex, medium	-	-	-	4.82	4.26	3.05	-	-	-	-	-	-
Yellow Granex, large	-	-	-	5.62	4.25	-	-	-	-	-	-	-
Chicago:												
50-lb. sack--												
Idaho, Yellow Spanish, large	2.26	2.61	3.20	4.98	-	-	-	2.85	2.86	3.48	3.74	-
Midwestern, Yellow Globe, medium	1.20	1.60	1.58	2.50	-	-	4.05	2.81	2.69	2.61	2.68	2.74
Texas, Yellow Granex, medium	-	-	-	4.58	3.75	2.92	-	-	-	-	-	-
Yellow Granex, large	-	-	-	5.40	4.12	-	-	-	-	-	-	-
Peas, Green												
New York:												
Bushel basket--												
Calif.,	-	-	-	3.67	6.67	6.00	6.50	6.38	-	8.08	6.30	4.34
Colo.,	-	-	-	-	-	-	6.38	6.17	6.75	-	-	-
Mexico,	7.00	4.81	4.70	3.88	-	-	-	-	-	-	-	5.38

Table 1.--Continued

VEGETABLES--CONTINUED

Market, Origin and description	Jan.	Feb.	Mar.	Apr.	May	June	July	Aug.	Sept.	Oct.	Nov.	Dec.
	-- - - Dollars Per Unit -- - -											
<u>Beas, Green--Continued</u>												
Chicago:												
<u>Bushel basket--</u>												
Calif.,	-	-	-	4.12	6.00	6.00	6.17	-	7.00	7.00	6.81	5.25
Colo.,	-	-	-	-	-	-	6.00	6.50	-	-	-	-
Mexico,	6.50	5.75	4.62	-	-	-	-	-	-	-	-	6.00
<u>Peppers, Green</u>												
New York:												
<u>Calif. Wonder type - bushel basket--</u>												
Fla., large	5.75	6.19	7.10	5.75	4.60	4.67	-	-	-	-	7.25	4.58
N.J., large	-	-	-	-	-	-	5.75 ^{4/}	3.66	2.92	2.75 ^{4/}	-	-
Chicago:												
<u>Calif. Wonder type - bushel basket--</u>												
Fla., large	6.56	6.31	5.44	7.69	4.30	4.58	-	-	-	-	6.00	4.91
Texas, med.-lge.	6.25	-	-	-	-	4.82	-	-	-	5.75	4.87	4.17
<u>Potatoes</u>												
New York:												
<u>U.S. No. 1, Size A, 50-lb. sack--</u>												
<u>Washed, unless stated</u>												
Calif., Long White	-	-	-	-	2.62	2.51	2.51	2.62	-	-	-	-
Fla., Round Reds, Size A	-	-	3.04	4.25	3.38	2.85	-	-	-	-	-	-
Round Reds, Size B	-	-	3.08	4.50	3.46	2.65	-	-	-	-	-	-
Sebagoes, Size A	-	-	-	-	2.87	2.60	-	-	-	-	-	-
Idaho, Russet Burbank ^{5/}	2.60	2.70	2.73	2.85	3.00	2.98	3.25	-	-	2.98	3.14	3.12
Maine, Katahdin type, unwashed ^{5/} ..	1.67	1.76	1.93	2.31	2.46	2.50	2.29	2.00	-	-	1.79	1.76
N.Y.L.I., Various Round whites, washed & unwashed mostly washed	1.66	1.68	1.74	-	-	-	1.35	1.75	1.68	1.80	1.82	1.74
Chicago:												
<u>Street Sales</u>												
<u>U.S. No. 1, Size A, 100-lb. sack, washed--</u>												
Calif., Long White	-	-	-	-	5.13	3.94	3.85	3.94	-	-	-	-
Idaho, Russet Burbank	4.62	4.75	4.83	5.08	5.12	5.08	-	-	-	5.07	5.45	5.35
Minn.-N.Dak. (Red River Valley) Round Reds	3.40	3.51	3.44	3.60	4.05	3.75	-	-	3.05	3.11	3.44	3.38
Round Reds	2.75	-	-	-	-	-	-	3.32	2.71	2.81	3.08	-
Russet Burbank	3.38	3.39	3.45	3.50	4.04	-	-	-	-	3.75	4.01	4.35
<u>U.S. No. 1, Size A, 50-lb. sack, washed--</u>												
Fla., Round Reds, Size A	3.50	3.50	3.03	3.69	3.21	-	-	-	-	-	-	-
Round Reds, Size B	-	3.95	3.16	3.22	3.10	-	-	-	-	-	-	-
<u>Radishes</u>												
New York:												
<u>Baskets--</u>												
Fla., Reds, 30s, 6-oz. film bags, Topped	1.25	1.97	1.20	1.22	1.72	2.00	-	-	-	2.44	1.30	1.16
N.J., Per Bunch	-	-	-	-	.0586	.0418	.0626	.0538	.0439	.0720	.0562	-
Chicago:												
<u>Baskets--</u>												
Fla., Reds, 30s, 6-oz. film bags, Topped	1.38	1.97	1.18	1.02	1.83	-	-	-	-	-	1.25	1.14
Ind., Reds, 30s, 8-oz. film bags, Topped	-	-	-	-	-	1.62	3.25	1.97	1.42	1.75	1.67	-
<u>Rhubarb</u>												
New York:												
<u>5-pound carton--</u>												
Mich., Extra fancy, Special long..	1.17	.98	.91	1.09	1.15	-	-	-	-	-	-	-
N.J., Per Bunch	-	-	-	-	.0709	.0600	.0650	-	-	-	-	-
<u>Spinach</u>												
New York:												
<u>Savoy type - Bushel basket & crate--</u>												
Colo.,	-	-	-	-	-	-	-	4.25	4.12	4.00	-	-
N.J.,	-	-	-	1.12	.79	.80	1.34	2.34	2.19	1.62	1.78	2.12
Texas,	2.28	2.47	2.88	2.35	-	-	-	-	-	-	-	3.18

1 - Few

4/ Medium-large.

5/ 2-inch minimum.

Table 1.--Continued

VEGETABLES--CONTINUED

Market, Origin and description	Jan.	Feb.	Mar.	Apr.	May	June	July	Aug.	Sept.	Oct.	Nov.	Dec.
	-- Dollars Per Unit --											
<u>Spinach--Continued</u>												
Chicago:												
Bushel basket--												
Ill., Flat type	-	-	-	2.38	2.55	1.87	2.50	3.50	-	2.08	1.97	2.08
Texas, Savoy type	2.64	2.54	-	-	-	-	-	-	-	-	-	2.00
<u>Spudpotatoes</u>												
New York:												
Bushel basket--												
N.C., Porto Rico type	3.65	3.80	3.65	3.65	3.78	3.92	4.17	5.50	4.18	4.01	4.48	5.05
N.J., Orange Jersey type	3.12	3.21	3.04	2.90	2.75	2.96	3.19	-	4.00	-	3.78	4.12
Chicago:												
50-lb. crate--												
La., Porto Rico type, cured	3.75	3.75	3.73	3.58	3.77	4.32	-	-	-	-	5.12	5.10
uncured	-	-	-	-	-	-	6.16	4.40	3.76	3.92	4.33	3.85
<u>Tomatoes</u>												
New York:												
Straw Sales--												
Fla., 8-lb. flat carton, vine ripe, large	1.90	1.92	2.02	-	2.08	-	-	-	-	-	-	2.50
N.J., 12-qt. basket vine ripe, medium	-	-	-	-	-	-	4.00	1.70	2.15	-	-	-
Ohio, 8-lb. basket, greenhouse, U.S.No. 1, medium	-	-	3.50	3.29	2.65	2.92	-	-	-	2.75	2.50	3.14
Chicago:												
Green, Ripes and Turning--												
Fla., 40-lb. carton, 6x6 & lgr. 6/	5.88	6.50	-	-	5.66	6.50	-	-	-	-	-	8.25
8-lb. flat carton, vine ripe, large	1.78	1.70	1.73	2.50	-	-	-	-	-	-	-	2.65
Ill., 8-quart basket, vine ripe, medium-large	-	-	-	-	-	-	2.18	1.64	-	-	-	-
Mich., 10-lb. basket, vine ripe, medium-large	-	-	-	-	-	-	-	1.35	1.19	1.12	-	-
Midwestern, 8-lb. carton, greenhouse, medium-large	1.95	-	3.00	3.14	2.20	2.42	2.32	2.10	-	2.28	2.37	2.70
S.C., 40-lb. carton, 6x6 & lgr. 6/	-	-	-	-	-	5.25	5.75	-	-	-	-	-
Texas, 40-lb. carton, 6x6 & lgr. 6/	-	-	-	-	-	6.25	5.88	-	-	-	-	-

6/ 85% or more U.S. No. 1, quality.

Table 2.--Auction prices of specified citrus and deciduous fruits in New York City and Chicago, each month, by market, origin, and description, 1966. Weighted average, all grades and sizes 1/

Market, Origin and description	Jan.	Feb.	Mar.	Apr.	May	June	July	Aug.	Sept.	Oct.	Nov.	Dec.
	Dollars Per Unit											
CITRUS FRUITS												
Grapefruit												
New York:												
Various varieties--												
Calif., 1/2-box, carton	-	-	-	-	2.45	3.73	3.64	3.66	5.31	-	-	-
Fla. 4/5-bu. box or carton, rail-truck 2/	3.26	3.32	3.04	3.02	2.99	2.71	2.31	2.98	6.04	3.16	2.74	2.72
Chicago:												
Various varieties--												
Calif., 1/2-box, carton	-	-	-	-	-	3.50	2.91	3.14	2.84	-	-	-
Lemons												
New York:												
Calif., 1/2-box, carton	3.84	4.16	4.21	4.26	4.21	4.74	5.09	4.07	4.42	3.93	4.31	4.53
Chicago:												
Calif., 1/2-box, carton	3.78	4.02	4.48	4.31	4.20	4.91	5.20	4.47	4.98	4.53	4.01	5.93
Oranges												
New York:												
Calif., Navel, 1/2-box, carton .	3.07	3.43	3.51	3.56	4.47	-	-	-	-	-	4.27	3.47
Valencia, 1/2 box, carton -	-	-	-	3.20	3.94	3.04	3.98	4.09	4.92	4.50	3.81	1.96
Fla., Various varie., 4/5-bu. box or carton, rail-truck 2/	2.58	3.34	2.68	3.05	3.34	2.86	3.51	3.94	3.77	2.69	2.55	2.20
Temple, 4/5-bu. box or carton, rail-truck 2/	2.53	2.78	3.39	3.53	3.04	-	-	-	-	-	-	3.61
Chicago:												
Calif., Navel, 1/2-box, carton..	2.91	3.21	3.12	3.04	3.60	-	-	-	-	-	3.67	3.38
Valencia, 1/2 box, carton -	-	-	-	3.01	3.35	2.78	3.59	3.56	4.44	4.03	3.19	-
Tangelos												
New York:												
Fla., 4/5-bu. box or carton, rail-truck 2/	2.81	2.67	2.97	2.74	-	-	-	-	-	3.42	2.96	2.77
Tangerines												
New York:												
Fla., 4/5-bu. box or carton, rail-truck 2/	2.92	4.27	4.19	4.80	-	-	-	-	-	5.12	4.01	3.68
DECIDUOUS FRUITS												
Apples												
New York:												
Boxes, all grades and sizes--												
Wash., Delicious 3/	5.30	5.58	6.08	6.12	6.49	6.54	7.03	4.99	6.95	5.47	5.40	5.51
Golden Delicious	4.44	4.59	4.95	4.67	6.00	4.91	4.25	-	5.95	4.94	4.94	4.60
Red Delicious	5.65	6.09	6.83	6.77	-	-	-	-	7.28	5.84	5.75	6.05
Winesap	-	4.39	4.26	4.74	5.36	5.82	6.12	9.70	-	-	-	-
Chicago:												
Boxes, all grades and sizes--												
Wash., Delicious 3/	4.99	5.30	5.39	5.76	6.13	6.03	8.35	-	6.68	5.00	4.79	3.64
Golden Delicious	5.49	4.98	5.15	4.89	5.20	4.79	-	-	6.98	5.96	4.58	6.47
Winesap	4.49	4.18	3.62	4.61	4.51	5.89	6.07	-	-	-	-	-
Apricots												
New York:												
Per lug--												
Calif., Perfection	-	-	-	-	-	4.52	-	-	-	-	-	-
Royal	-	-	-	-	7.84	4.78	-	-	-	-	-	-
Tilton	-	-	-	-	-	5.70	5.11	-	-	-	-	-
Chicago:												
Per lug--												
Calif., Royal	-	-	-	-	7.58	5.07	-	-	-	-	-	-
Tilton	-	-	-	-	-	4.92	5.56	-	-	-	-	-

1/ Compiled by Economic and Statistical Analysis Division, ERS.

2/ Weighted averages for combined rail and truck receipts compiled by Market News Branch, Fruit and Vegetable Division, C&MS, from information supplied by Economic and Statistical Analysis Division, ERS.

3/ Includes Red Strains.

Table 2.--Continued

DECIDUOUS FRUITS--CONTINUED

Market, Origin and description	Jan.	Feb.	Mar.	Apr.	May	June	July	Aug.	Sept.	Oct.	Nov.	Dec.
	Dollars Per Unit											
Cherries												
New York:												
Calix lug (20-lb. lug. loose)--												
Calif., Bing	-	-	-	-	10.26	8.39	-	-	-	-	-	-
Calif., Tartarian	-	-	-	-	5.62	-	-	-	-	-	-	-
Oreg., Bing	-	-	-	-	-	8.95	6.40	-	-	-	-	-
Lambert	-	-	-	-	-	-	7.17	-	-	-	-	-
Wash., Bing	-	-	-	-	-	9.46	6.55	6.42	-	-	-	-
Lambert	-	-	-	-	-	-	7.56	7.02	-	-	-	-
Chicago:												
Calix lug (20-lb. lug. loose)--												
Calif., Bing	-	-	-	-	7.72	7.88	-	-	-	-	-	-
Tartarian	-	-	-	-	4.62	-	-	-	-	-	-	-
Oreg., Bing	-	-	-	-	-	10.41	8.20	-	-	-	-	-
Lambert	-	-	-	-	-	-	8.09	-	-	-	-	-
Wash., Bing	-	-	-	-	-	7.88	-	-	-	-	-	-
GRAPES												
New York:												
Table Stock, Per lug--												
Calif., Calmeria	3.46	4.14	3.19	-	-	-	-	-	-	4.65	4.59	4.05
Cardinal	-	-	-	-	-	5.48	4.20	3.49	-	-	-	-
Emperor	2.85	3.41	3.47	4.51	-	-	-	-	3.84	3.15	2.93	3.40
Perlette	-	-	-	-	-	6.18	4.71	-	-	-	-	-
Ribier	4.84	3.50	3.15	-	-	-	4.90	4.47	4.01	4.45	4.72	5.11
Thompson Seedless	-	-	-	-	-	5.80	5.14	3.84	4.03	3.88	4.41	-
Chicago:												
Table Stock, per lug--												
Calif., Calmeria	4.24	4.13	3.53	-	-	-	-	-	2.70	3.83	4.15	4.09
Cardinal	-	-	-	-	-	5.42	4.68	4.56	-	-	-	-
Emperor	2.83	3.58	3.57	-	-	-	-	-	3.34	3.52	3.07	3.31
Perlette	-	-	-	-	-	8.18	5.05	-	-	-	-	-
Ribier	3.52	2.83	-	-	-	-	6.00	4.48	4.03	3.90	4.18	4.25
Thompson Seedless	-	-	-	-	-	7.17	5.20	3.90	4.58	4.72	-	-
Nectarines												
New York:												
2-layer lug - cup pack--												
Calif., Early SunGrand	-	-	-	-	-	4.10	3.85	-	-	-	-	-
Late LeGrand	-	-	-	-	-	-	4.52	3.47	3.42	-	-	-
LeGrand	-	-	-	-	-	-	3.90	2.95	-	-	-	-
SunGrand	-	-	-	-	-	-	-	4.27	2.30	-	-	-
Sunrise	-	-	-	-	6.44	3.67	-	-	-	-	-	-
Chicago:												
2-layer lug - cup pack--												
Calif., Early SunGrand	-	-	-	-	-	6.43	3.73	-	-	-	-	-
Late LeGrand	-	-	-	-	-	-	4.48	3.48	3.93	-	-	-
LeGrand	-	-	-	-	-	-	3.89	3.54	-	-	-	-
SunGrand	-	-	-	-	-	-	4.17	-	-	-	-	-
Sunrise	-	-	-	-	-	3.76	-	-	-	-	-	-
Peaches												
New York:												
2-layer lug - cup pack--												
Calif., Redhaven	-	-	-	-	-	2.23	-	2.53	-	-	-	-
Rio Oso Gem	-	-	-	-	-	-	-	2.59	-	-	-	-
Chicago:												
2-layer lug - cup pack--												
Calif., Redhaven	-	-	-	-	-	3.11	2.08	-	-	-	-	-
Rio Oso Gem	-	-	-	-	-	-	-	3.10	3.83	-	-	-
Pears												
New York:												
All Grades, Per Box--												
Calif., Bartlett	-	-	-	-	-	-	5.66	5.45	6.45	6.54	-	-
Bosc	-	-	-	-	-	-	-	6.59	5.80	5.18	-	-
Comice	-	-	-	-	-	-	-	-	6.41	6.06	5.99	4.96
D'Anjou	-	-	-	-	-	-	-	-	-	5.39	-	4.77
Winter Nelis	-	-	-	-	-	-	-	-	2.54	-	-	-

Table 2.--Continued

DECIDUOUS FRUITS--CONTINUED

Market, Origin and description	Jan.	Feb.	Mar.	Apr.	May	June	July	Aug.	Sept.	Oct.	Nov.	Dec.
	Dollars Per Unit											
Pears--Continued												
New York:												
All Grades, Per Box--												
Oreg., Bartlett	-	-	-	-	-	-	-	5.25	5.12	5.00	3.88	1.97
Bosc	7.32	8.29	8.51	9.70	-	-	-	-	6.15	5.41	5.75	5.63
Comice	6.43	4.31	5.45	-	-	-	-	-	5.23	5.61	5.44	4.65
D'Anjou	5.88	5.53	5.70	5.21	5.08	6.94	-	-	-	4.20	5.05	5.22
Wash., Bartlett	-	-	-	-	-	-	-	4.68	4.85	3.99	3.86	3.01
Bosc	5.02	4.63	-	-	-	-	-	-	-	-	-	-
Comice	-	-	-	-	-	-	-	-	-	-	3.13	-
D'Anjou	5.65	5.24	5.24	4.84	6.24	6.74	-	-	-	5.68	4.87	5.31
Chicago:												
All Grades, Per Box--												
Calif., Bartlett	-	-	-	-	-	-	5.93	5.21	6.01	6.52	-	-
Oreg., Bartlett	-	-	-	-	-	-	-	-	5.44	5.11	-	-
Bosc	7.83	7.92	8.48	-	-	-	-	-	6.32	6.16	6.36	6.81
D'Anjou	5.96	5.68	5.84	5.88	-	-	-	-	-	5.29	5.26	5.29
Wash., Bartlett	-	-	-	-	-	-	-	-	4.74	5.46	4.34	-
Bosc	-	-	-	-	-	-	-	-	-	-	4.15	-
D'Anjou	-	5.87	-	-	6.37	-	-	-	-	5.40	4.85	5.58
Plums												
New York:												
Per Crate--												
Calif., Beauty	-	-	-	-	7.66	4.99	-	-	-	-	-	-
Eldorado	-	-	-	-	-	6.85	5.96	7.44	-	-	-	-
Laroda	-	-	-	-	-	-	5.42	6.40	-	-	-	-
Late Santa Rosa	-	-	-	-	-	-	5.58	7.00	-	-	-	-
President	-	-	-	-	-	-	4.72	7.17	8.15	-	-	-
Santa Rosa	-	-	-	-	-	6.00	6.92	-	-	-	-	-
Chicago:												
Per Crate--												
Calif., Beauty	-	-	-	-	6.28	4.80	-	-	-	-	-	-
Eldorado	-	-	-	-	-	6.07	5.74	-	-	-	-	-
Laroda	-	-	-	-	-	-	5.64	6.10	-	-	-	-
Late Santa Rosa	-	-	-	-	-	-	5.90	6.05	-	-	-	-
President	-	-	-	-	-	-	5.11	6.11	8.99	-	-	-
Santa Rosa	-	-	-	-	-	5.50	6.32	-	-	-	-	-
Prunes, Fresh												
New York:												
1/2-Bushel Basket--												
Northwest, Italian type	-	-	-	-	-	-	-	3.80	2.73	1.88	-	-
Chicago:												
1/2-Bushel Basket--												
Northwest, Italian type	-	-	-	-	-	-	-	3.56	-	-	-	-

Table 3.--Average prices of specified fruits and vegetables at leading shipping points, each month by description of sale 1966.

(Prices in this table are simple averages of the mid-points of the daily range and are only for months during which market news stations were in operation in the specified districts. All sales f.o.b. shipping point, unless otherwise stated.)

BERRIES

Shipping point and description of sale	Jan.	Feb.	Mar.	Apr.	May	June	July	Aug.	Sept.	Oct.	Nov.	Dec.
- - - Dollars Per Unit - - -												
Blueberries												
Michigan:												
<u>Benton Harbor</u>												
<u>Cash market growers' sales</u>												
<u>Cultivated, film wrapped--</u>												
Various varieties, 12-pint flat	-	-	-	-	-	-	4.50	3.58	3.55	-	-	-
New Jersey:												
<u>New Jersey Points</u>												
<u>Sales f.o.b. shipping point and delivered</u>												
<u>sales shipping point basis</u>												
<u>Cultivated, film wrapped, 12-pint flat--</u>												
Various varieties, med-lge., per pt.	-	-	-	-	-	-	.31	.30	-	-	-	-
Raspberries												
Michigan:												
<u>Benton Harbor</u>												
<u>Cash market growers' sales</u>												
<u>12-pint flat--</u>												
Black	-	-	-	-	-	-	2.93	-	-	-	-	-
Red	-	-	-	-	-	-	5.50	-	-	-	-	-
Strawberries												
Arkansas:												
<u>Auction sales - 16-quart crate - U.S. No. 1</u>												
<u>Bald Knob Area--</u>												
Blakemore	-	-	-	-	5.54	-	-	-	-	-	-	-
Tennessee Beauty	-	-	-	-	5.48	-	-	-	-	-	-	-
<u>Marshall Area--</u>												
Blakemore	-	-	-	-	5.61	-	-	-	-	-	-	-
Tennessee Beauty	-	-	-	-	5.61	-	-	-	-	-	-	-
California:												
<u>Central (Coastal Points)--</u>												
Various varieties, 12-pint tray	-	-	-	-	3.23	3.12	-	-	-	-	-	-
<u>Southern (Orange County)</u>												
<u>Precooling & Palleting extra--</u>												
Various varieties, 12-pint tray	-	-	4.65	3.32	3.15	3.11	-	-	-	-	-	-
Florida:												
<u>Delivered sales shipping point basis</u>												
<u>12-pint flat--</u>												
Various varieties, per pint34	.34	.29	-	-	-	-	-	-	-	-	-
Delaware:												
<u>Laurel Area, Auction sales--</u>												
Various varieties, 16-quart crate	-	-	-	-	-	6.36	-	-	-	-	-	-
Louisiana:												
<u>Hammond Area</u>												
<u>12-pint flat--</u>												
L.S.U. varieties, jumble pack ...	-	-	-	2.98	2.72	-	-	-	-	-	-	-
Michigan:												
<u>Benton Harbor</u>												
<u>Cash market growers' sales--</u>												
Various varieties, 16-quart crate	-	-	-	-	-	6.01	-	-	-	-	-	-
and 2-8-quart flat	-	-	-	-	-	-	-	-	-	-	-	-
<u>Alcona District - Auction sales</u>												
<u>16-quart crate--</u>												
Various varieties.....	-	-	-	-	-	-	6.53	-	-	-	-	-
New Jersey:												
<u>South New Jersey Points - Auction sales</u>												
<u>Hampton Area - 16-quart crate--</u>												
Various varieties	-	-	-	-	-	7.12	-	-	-	-	-	-
Virginia:												
<u>Eastern Shore - Auction sales</u>												
<u>Empire Area - 16-quart crate--</u>												
Various varieties mostly Dixieland	-	-	-	-	-	7.45	-	-	-	-	-	-
and Pocahontas	-	-	-	-	-	-	-	-	-	-	-	-

Table 3.--Continued

CITRUS FRUITS

Shipping point and description of sale	Jan.	Feb.	Mar.	Apr.	May	June	July	Aug.	Sept.	Oct.	Nov.	Dec.
	- - - Dollars Per Unit - - -											
Grapefruit												
Texas:												
<u>Lower Rio Grande Valley</u>												
<u>Carton - U.S. Combination - Ruby Reds--</u>												
48s	1.89	2.02	1.93	2.14	-	-	-	-	-	2.12	1.72	1.41
40s	1.73	1.93	1.90	2.09	-	-	-	-	-	2.35	1.97	1.76
36s	1.62	1.84	1.82	2.05	-	-	-	-	-	2.61	2.34	2.40
32s	1.62	1.84	1.82	2.05	-	-	-	-	-	2.56	2.40	2.61
27s & larger	1.60	1.74	1.67	1.76	-	-	-	-	-	-	2.65	2.61
5-lb. film bags26	.30	.29	.32	-	-	-	-	-	.34	.28	.24
Lemons												
California:												
<u>Southern & Central Districts</u>												
<u>Carton - Shippers First Grade--</u>												
140-165s	4.00	3.78	3.84	3.62	3.63	3.99	4.21	4.15	4.40	4.54	4.32	4.30
<u>Choice--</u>												
140-165s	2.58	2.64	2.88	3.05	3.14	3.25	3.25	3.15	3.23	3.23	3.02	3.15
Oranges												
California:												
<u>Southern & Central Districts</u>												
<u>Navel - Carton - Shippers First Grade--</u>												
88-113s	2.61	2.58	2.57	2.80	3.03	-	-	-	-	-	4.01	3.33
138-163s	2.42	2.42	2.29	2.53	2.67	-	-	-	-	-	3.85	3.40
<u>Choice--</u>												
88-113s	2.14	2.08	2.08	2.05	2.17	-	-	-	-	-	3.26	2.30
138-163s	2.01	2.20	2.00	1.98	2.10	-	-	-	-	-	3.03	2.30
<u>Valencia - Carton - Shippers First Grade--</u>												
88-113s	-	-	-	-	2.84	2.92	3.22	3.58	4.05	4.57	-	-
138-163s	-	-	-	-	2.51	2.45	2.61	2.79	3.29	3.40	-	-
<u>Choice--</u>												
88-113s	-	-	-	-	2.38	2.33	2.40	2.25	2.79	3.08	-	-
138-163s	-	-	-	-	2.20	2.01	2.10	2.08	2.35	2.36	-	-
Texas:												
<u>Lower Rio Grande Valley</u>												
<u>Carton - U.S. Combination</u>												
<u>Marks & Hamline Varieties--</u>												
125s & larger	1.86	1.99	-	-	-	-	-	-	-	2.34	1.88	1.68
5-lb. film bags26	.28	-	-	-	-	-	-	-	.31	.26	.24
<u>Valencia--</u>												
125s & larger	-	2.30	2.20	2.08	-	-	-	-	-	-	-	-
5-lb. film bags	-	.32	.30	.30	-	-	-	-	-	-	-	-

OTHER FRUITS

Apples

Michigan:												
<u>West Michigan Points</u>												
<u>Carton tray pack, U.S. Fancy, 125s & larger--</u>												
Jonathan	-	-	-	-	-	-	-	-	-	-	3.34	3.42
Red Delicious	3.92	-	-	-	-	-	-	-	5.08	-	-	-
<u>10-4-lb. film, master container,</u>												
<u>U.S. Fancy, 2 1/2" up--</u>												
Jonathan	2.19	2.00	2.00	-	-	-	-	-	3.12	2.49	2.80	2.84
McIntosh	2.29	2.03	2.00	-	-	-	-	-	2.60	2.46	2.62	2.60
Red Delicious	3.25	-	-	-	-	-	-	-	4.07	3.69	3.50	3.50
<u>C. A. Storage, carton tray pack</u>												
<u>U.S. Fancy, 125s & larger--</u>												
Jonathan	3.55	-	-	-	-	-	-	-	-	-	-	-
Red Delicious	4.50	4.50	4.66	-	-	-	-	-	-	-	-	-
<u>12-3-lb. film, master container</u>												
<u>U.S. Fancy, 2 1/2" up--</u>												
Jonathan	3.06	3.07	2.88	-	-	-	-	-	-	-	-	-
McIntosh	3.16	3.08	3.02	-	-	-	-	-	-	-	-	-
Red Delicious	3.84	3.89	4.08	-	-	-	-	-	-	-	-	-

Table 3.--Continued

OTHER FRUITS--CONTINUED

Shipping point and description of sale	Jan.	Feb.	Mar.	Apr.	May	June	July	Aug.	Sept.	Oct.	Nov.	Dec.
Dollars Per Unit												
<u>Apples--Continued</u>												
New York:												
<u>Western and Central New York Points</u>												
<u>Sales f.o.b. shipping point and delivered sales shipping point basis</u>												
<u>Carton tray pack, U.S. Fancy</u>												
<u>125a and larger--</u>												
Red Delicious	4.20	4.14	-	-	-	-	-	-	-	4.60	4.50	4.53
<u>U.S. Fancy, 2½ in. up master container</u>												
<u>12-3-lb. film bags--</u>												
McIntosh	2.64	2.61	2.70	-	-	-	-	-	-	2.88	3.03	3.02
Red Delicious	3.16	3.28	3.24	-	-	-	-	-	-	3.68	3.71	3.42
<u>G. A. Storage--</u>												
McIntosh	-	-	3.49	3.45	-	-	-	-	-	-	-	-
Red Delicious	-	-	4.27	4.50	-	-	-	-	-	-	-	-
<u>10-4-lb. film bags--</u>												
Cortland	2.35	2.34	-	-	-	-	-	-	-	2.69	2.72	2.66
McIntosh	2.86	2.76	-	-	-	-	-	-	-	3.12	3.16	3.13
Red Delicious	3.47	3.52	3.54	-	-	-	-	-	-	3.92	-	3.56
Red Rome	2.83	2.96	2.89	-	-	-	-	-	-	-	-	3.27
<u>G. A. Storage--</u>												
Red Rome	-	-	-	3.98	-	-	-	-	-	-	-	-
Washington:												
<u>Yakima Valley</u>												
<u>Carton tray pack,</u>												
<u>Extra Fancy, 128a & larger--</u>												
Golden Delicious	5.05	5.10	5.25	5.25	5.25	-	-	-	5.55	5.02	4.88	4.72
Red Delicious	4.45	4.40	4.52	4.80	5.06	-	-	-	5.52	4.47	4.25	4.33
Winesap	3.96	4.02	4.28	4.48	4.72	5.28	5.50	-	-	3.90	3.89	3.99
<u>G. A. Storage--</u>												
Golden Delicious	-	-	5.91	5.99	6.50	-	-	-	-	-	-	-
Red Delicious	-	-	5.58	5.66	5.91	6.03	6.21	-	-	-	-	-
West Virginia:												
<u>Appalachian District (W.Va.-Va.-Md.-Pa.)</u>												
<u>Carton tray pack, Combination U.S.</u>												
<u>Extra Fancy and U.S. Fancy, 125a & larger--</u>												
Red Delicious	4.12	4.14	-	-	-	-	-	-	5.88	4.66	4.51	4.36
Red Rome	3.41	3.39	3.43	-	-	-	-	-	-	3.98	4.00	4.02
Red Stayman	3.38	3.33	3.30	-	-	-	-	-	-	3.96	4.09	4.08
<u>4-lb. film bags, master container</u>												
<u>U.S. Fancy, 2½ in. up--</u>												
Red Delicious31	-	-	-	-	-	-	-	.43	.38	.39	.38
Red Rome28	.28	-	-	-	-	-	-	-	.33	.33	.33
Red Stayman28	.27	-	-	-	-	-	-	-	.32	.33	.33
<u>3-lb. film bags, master container</u>												
<u>U.S. Fancy, 2½ in. up--</u>												
Red Delicious	-	-	-	-	-	-	-	-	.36	.32	.32	.32
<u>G. A. Storage--</u>												
<u>Carton tray pack, Combination U.S.</u>												
<u>Extra Fancy and U.S. Fancy, 125a & larger--</u>												
Red Delicious	-	5.48	5.50	-	-	-	-	-	-	-	-	-
Red Rome	-	-	4.15	-	-	-	-	-	-	-	-	-
Red Stayman	-	-	4.06	-	-	-	-	-	-	-	-	-
<u>4-lb. film bags, master container</u>												
<u>U.S. Fancy, 2½ in. up--</u>												
Red Delicious40	.40	-	-	-	-	-	-	-	-	-	-
Red Rome	-	-	.35	-	-	-	-	-	-	-	-	-
Red Stayman	-	.35	.35	-	-	-	-	-	-	-	-	-
Apricots												
Washington:												
<u>Yakima Valley</u>												
<u>Wash. No. 1 - 6 row & larger,</u>												
<u>double faced--</u>												
Moorpark, 14-lb. lug.....	-	-	-	-	-	-	1.59	-	-	-	-	-
28-lb. lug, loose ...	-	-	-	-	-	-	2.24	-	-	-	-	-
Cherries												
Washington:												
<u>Yakima Valley</u>												
<u>U.S. No. 1--</u>												
Binga, 20-lb. lug, loose,	-	-	-	-	-	6.73	-	-	-	-	-	-
12 row & larger	-	-	-	-	-	-	-	-	-	-	-	-

Table 3.--Continued

OTHER FRUITS--CONTINUED

Shipping point and description of sale	Jan.	Feb.	Mar.	Apr.	May	June	July	Aug.	Sept.	Oct.	Nov.	Dec.
	Dollars Per Unit											
Grapes												
California:												
Cochella Valley												
U.S. No. 1 - 22-lb. lug--												
Cardinal	-	-	-	-	-	4.74	-	-	-	-	-	-
Perlette	-	-	-	-	-	6.37	-	-	-	-	-	-
Thompson Seedless	-	-	-	-	-	4.60	-	-	-	-	-	-
Fresno-Central San Joaquin Valley												
26-lb. lug--												
Emperor	1.87	2.08	2.44	-	-	-	-	-	2.58	2.34	2.06	2.25
Red Malaga	-	-	-	-	-	-	-	2.82	-	-	-	-
Ribier	2.76	-	-	-	-	-	-	3.66	3.15	3.04	2.94	2.93
Thompson Seedless	-	-	-	-	-	-	3.28	3.00	3.31	3.52	-	-
Kern County Points												
26-lb. lug--												
Cardinal	-	-	-	-	-	-	3.54	-	-	-	-	-
Emperor	2.50	2.66	-	-	-	-	-	-	2.80	2.60	2.55	2.71
Red Malaga	-	-	-	-	-	-	3.42	3.02	-	-	-	-
Ribier	3.18	-	-	-	-	-	4.42	3.72	3.44	3.17	3.18	3.45
Thompson Seedless	-	-	-	-	-	-	3.97	3.28	3.64	3.48	-	-
Lodi District												
U.S. No. 1 - 26-lb. lug--												
Tokay	-	-	-	-	-	-	-	2.18	2.09	1.80	-	-
Michigan:												
Renton Harbor												
Cash market growers' sales												
Concord--												
Fancy table, crts. & ctns, 8-2-qt.	-	-	-	-	-	-	-	-	3.29	3.39	-	-
Nectarines												
California:												
Fresno-Central San Joaquin Valley												
2-layer lug, cup pack--												
Sunrise, 80-84s	-	-	-	-	-	3.55	-	-	-	-	-	-
Early SunGrand, 80-84s	-	-	-	-	-	3.25	-	-	-	-	-	-
Regular SunGrand, 80-84s	-	-	-	-	-	-	3.25	-	-	-	-	-
Regular LeGrand, 72s & lgr.	-	-	-	-	-	-	3.25	-	-	-	-	-
Late LeGrand, 72s & lgr.	-	-	-	-	-	-	3.39	3.21	-	-	-	-
Peaches												
Arkansas:												
3/4-bushel basket or crate												
U.S. No. 1, 2-in. up												
Clarksville Area--												
Red Elberta	-	-	-	-	-	-	-	3.23	-	-	-	-
Redhaven	-	-	-	-	-	-	3.46	-	-	-	-	-
Nashville Area--												
Fairbeauty	-	-	-	-	-	3.30	2.86	-	-	-	-	-
Elberta	-	-	-	-	-	-	3.13	-	-	-	-	-
Redhaven	-	-	-	-	-	3.56	-	-	-	-	-	-
Crowley-Ridge Area--												
Dixired	-	-	-	-	-	3.46	-	-	-	-	-	-
Redhaven	-	-	-	-	-	-	3.75	-	-	-	-	-
Redskin	-	-	-	-	-	-	-	3.49	-	-	-	-
Triogen	-	-	-	-	-	-	3.35	-	-	-	-	-
California:												
Central San Joaquin Valley												
2-layer lug, cup pack, 72s & lgr.--												
J. H. Hales	-	-	-	-	-	-	2.20	-	-	-	-	-
Red Globe	-	-	-	-	-	2.42	2.23	-	-	-	-	-
Redhaven	-	-	-	-	-	2.61	-	-	-	-	-	-
Rio Geo Gem	-	-	-	-	-	-	-	2.75	-	-	-	-
Springtime	-	-	-	-	5.00	-	-	-	-	-	-	-
Peach box, 65s & lgr.--												
Early Elberta	-	-	-	-	-	1.40	-	-	-	-	-	-
Elberta	-	-	-	-	-	-	1.40	-	-	-	-	-

Table 3.--Continued

OTHER FRUITS--CONTINUED

Shipping point and description of sale	Jan.	Feb.	Mar.	Apr.	May	June	July	Aug.	Sept.	Oct.	Nov.	Dec.
	Dollars Per Unit											
Georgia:												
<u>Macon & Georgia Points</u>												
<u>U.S.Extra No. 1, 2-in.up</u>												
<u>3/4-bushel crate or carton--</u>												
Coronet	-	-	-	-	-	3.20	-	-	-	-	-	-
Dixired	-	-	-	-	-	3.14	-	-	-	-	-	-
Keystone.....	-	-	-	-	-	3.14	-	-	-	-	-	-
Southland.....	-	-	-	-	-	2.96	2.74	-	-	-	-	-
Michigan:												
<u>West Michigan Points,-U.S.No.1,2-in.up</u>												
<u>3/4-bushel crate or carton--</u>												
Elberta.....	-	-	-	-	-	-	-	-	4.89	-	-	-
Redhaven.....	-	-	-	-	-	-	-	4.32	-	-	-	-
Redskin.....	-	-	-	-	-	-	-	-	6.25	-	-	-
North Carolina:												
<u>North Carolina Points</u>												
<u>U.S.Extra No. 1, 2-in.up</u>												
<u>3/4-bushel basket, crate, or carton--</u>												
Coronet.....	-	-	-	-	-	-	2.92	-	-	-	-	-
Dixired.....	-	-	-	-	-	3.21	-	-	-	-	-	-
Keystone.....	-	-	-	-	-	-	3.09	-	-	-	-	-
Redhaven.....	-	-	-	-	-	-	2.90	-	-	-	-	-
Southland.....	-	-	-	-	-	-	3.78	-	-	-	-	-
South Carolina:												
<u>Spartanburg(South Carolina Points)</u>												
<u>U.S.Extra No. 1, 2-in.up</u>												
<u>3/4-bushel basket, crate, or carton--</u>												
Coronet.....	-	-	-	-	-	3.32	2.78	-	-	-	-	-
Dixired.....	-	-	-	-	-	3.14	-	-	-	-	-	-
Keystone.....	-	-	-	-	-	2.99	2.99	-	-	-	-	-
Redhaven.....	-	-	-	-	-	3.40	2.94	-	-	-	-	-
Southland.....	-	-	-	-	-	-	3.25	-	-	-	-	-
Washington:												
<u>Yakima Valley - Truck & L.C.L. sales</u>												
<u>2-layer lug, cup pack, Wash.No. 1, 70s & 1gr.</u>												
Early Hales.....	-	-	-	-	-	-	-	2.86	-	-	-	-
J.H.Hales.....	-	-	-	-	-	-	-	2.80	-	-	-	-
J.H.Hales,Pch.box,wrpd.65s & 1gr..	-	-	-	-	-	-	-	1.96	-	-	-	-
Early Elberta,Pch.box,wrpd.65s & 1gr.-	-	-	-	-	-	-	-	1.62	-	-	-	-
West Virginia:												
<u>Appalachian District(W.Va.-Va.-Md.-Pa.)</u>												
<u>U.S.Extra No. 1, 2-in.up</u>												
<u>3/4-bushel crate or carton--</u>												
Elberta.....	-	-	-	-	-	-	-	2.95	-	-	-	-
Redhaven.....	-	-	-	-	-	-	-	3.54	-	-	-	-
Sunhigh.....	-	-	-	-	-	-	-	3.64	-	-	-	-
Washington:												
<u>Yakima Valley</u>												
<u>Boxes, wrapped, film lined--</u>												
Bartlett, U.S.No. 1, var. sizes...	-	-	-	-	-	-	-	3.51	3.83	4.10	-	-
D'Anjou, U.S.No. 1, var. sizes....	4.68	4.81	5.23	-	-	-	-	-	-	4.17	4.20	4.24
California:												
<u>Central San Joaquin Valley</u>												
<u>U.S.No. 1, 4-basket, crate, 3x4x5s unless stated.</u>												
Beauty, 4x5s.....	-	-	-	-	4.67	-	-	-	-	-	-	-
Eldorado.....	-	-	-	-	-	4.04	4.00	-	-	-	-	-
Laroda.....	-	-	-	-	-	-	4.50	-	-	-	-	-
Late Santa Rosa.....	-	-	-	-	-	-	4.50	-	-	-	-	-
President.....	-	-	-	-	-	-	4.50	4.64	-	-	-	-
Santa Rosa, 4x5s.....	-	-	-	-	-	4.20	-	-	-	-	-	-
Idaho:												
<u>Western Idaho & Malheur Co., Oregon</u>												
<u>U.S.No. 1 --</u>												
Early Italian type, 1/2-bu.bkt. ring faced....	-	-	-	-	-	-	-	3.50	-	-	-	-
Italian type, 1/2-bu.bkt. ring faced.....	-	-	-	-	-	-	-	3.30	-	-	-	-
30-lb.ctn., loose...	-	-	-	-	-	-	-	3.20	-	-	-	-

Table 3.--Continued

OTHER FRUITS--CONTINUED

Shipping point and description of sale	Jan.	Feb.	Mar.	Apr.	May	June	July	Aug.	Sept.	Oct.	Nov.	Dec.
-- Dollars Per Unit --												
Prunes, Fresh--Continued												
Washington:												
Yakima Valley												
Wash. No. 1--												
Early Italian type, 1/2-bu. bkt., faced	-	-	-	-	-	-	-	3.43	-	-	-	-
30-lb. carton, loose	-	-	-	-	-	-	-	3.29	-	-	-	-
Italian type, 1/2-bu. bkt., faced	-	-	-	-	-	-	-	3.03	-	-	-	-
30-lb. carton, loose	-	-	-	-	-	-	-	2.85	-	-	-	-
MELONS												
Cantaloupe												
Arizona:												
Vine ripened - Jumbo crate, 36s--												
Parker District	-	-	-	-	-	5.10	-	-	-	-	-	-
Yuma District	-	-	-	-	-	5.77	-	-	-	-	-	-
California:												
Vine ripened - Jumbo crate, 36s--												
Blythe District (Palo Verde Valley)	-	-	-	-	-	5.44	-	-	-	-	-	-
El Centro (Imperial Valley)	-	-	-	-	-	5.88	-	-	-	-	-	-
West Side District	-	-	-	-	-	-	6.37	6.11	5.87	-	-	-
Wheeler Ridge Section	-	-	-	-	-	5.84	-	-	-	-	-	-
Baltimore:												
Laurel Area - Auction sales--												
Loose, each	-	-	-	-	-	-	-	.16	.09	-	-	-
Texas:												
Lower Rio Grande Valley												
Vine ripened--												
Jumbo crate, 36s	-	-	-	-	-	6.05	-	-	-	-	-	-
Honeydew												
California:												
Fresno-Central San Joaquin Valley--												
Standard crate, 9-12s	-	-	-	-	-	-	3.06	3.00	3.08	-	-	-
Miscellaneous Melons												
California:												
Fresno-Central San Joaquin Valley												
Jumbo flat crate, 6s--												
Cañaba	-	-	-	-	-	-	3.60	3.35	3.35	-	-	-
Cranshaw	-	-	-	-	-	-	3.72	3.75	3.82	-	-	-
Persian	-	-	-	-	-	-	-	3.78	3.82	-	-	-
Santa Claus	-	-	-	-	-	-	-	3.75	3.75	-	-	-
Watermelons												
Arizona:												
Phoenix & Central Arizona Points--												
Peacock, 18-22-lb. Av., per ton	-	-	-	-	-	55.21	37.22	-	-	-	-	-
California:												
El Centro (Imperial Valley)--												
Peacock, 16-20-lb. Av., per ton	-	-	-	-	-	57.37	-	-	-	-	-	-
Fresno-Kingsburg-Dinuba District--												
Peacock, 17-18-lb. Av., per ton	-	-	-	-	-	-	43.21	38.00	-	-	-	-
Kern District--												
Peacock, Klondike, & Stripes	-	-	-	-	-	-	40.69	-	-	-	-	-
16-20-lb. Av., per ton	-	-	-	-	-	-	-	-	-	-	-	-
Baltimore:												
Laurel Area - Auction sales												
Charleston Gray - Per Melon--												
20-24 lb.	-	-	-	-	-	-	-	.44	.38	-	-	-
Florida:												
Florida Points												
Sales f.o.b. shipping point and delivered sales shipping point basis												
Mostly Charleston Gray - Per Cwt.--												
22-lb. Av. & smaller	-	-	-	4.03	2.64	1.76	1.91	-	-	-	-	-
24-lb. Av. & larger	-	-	-	5.18	3.11	1.70	2.04	-	-	-	-	-

Table 3.--Continued

MELONS--CONTINUED

Shipping point and description of sale	Jan.	Feb.	Mar.	Apr.	May	June	July	Aug.	Sept.	Oct.	Nov.	Dec.
	-- - - Dollars Per Unit - - -											
Georgia:												
<u>Southern & Central Georgia Points</u>						<u>Watermelons--Continued</u>						
<u>Sales f.o.b. shipping point and delivered sales shipping point basis</u>												
<u>Mostly Charleston Gray - Per Cwt.--</u>												
22-lb. Av. & smaller.....	-	-	-	-	-	1.65	1.98	-	-	-	-	-
24-lb. Av. & larger.....	-	-	-	-	-	1.58	2.09	-	-	-	-	-
Indiana:												
<u>Southwest</u>												
<u>Charleston Gray - Per Cwt.--</u>												
18-27-lb.....	-	-	-	-	-	-	-	1.69	-	-	-	-
Maryland:												
<u>Salisbury Area - Auction sales</u>												
<u>Charleston Gray - Per Melon--</u>												
20-24-lb.....	-	-	-	-	-	-	-	.47	-	-	-	-
South Carolina:												
<u>Allendale & Nearby Points</u>												
<u>Charleston Gray - Per Cwt.--</u>												
18-30-lb. Av.....	-	-	-	-	-	-	2.01	-	-	-	-	-
Texas:												
<u>Central & East Texas Points</u>												
<u>Mostly Charleston Gray - Per Cwt.--</u>												
16-30-lb.....	-	-	-	-	-	1.95	1.87	1.72	-	-	-	-
Virginia:												
<u>Southeast Virginia Points</u>												
<u>Sales f.o.b. acceptance final- Prices net to growers</u>												
<u>Charleston Gray - Per Cwt.</u>												
20-24-lb.....	-	-	-	-	-	-	-	1.75	-	-	-	-
25-lb. & larger.....	-	-	-	-	-	-	-	1.98	-	-	-	-

VEGETABLES

California:												
<u>El Centro (Imperial Valley)</u>						<u>Asparagus</u>						
<u>Green, Pyramid crate--</u>												
Loose, large.....	-	-	10.90	6.64	-	-	-	-	-	-	-	-
standard.....	-	-	9.72	6.14	-	-	-	-	-	-	-	-
<u>Delta District</u>												
<u>Green, Pyramid crate, loose, 9-in.cut--</u>												
Large.....	-	-	7.76	5.50	-	-	-	-	-	-	-	-
New Jersey:												
<u>Swedesboro Area - Auction sales</u>												
<u>Pyramid crate, 12-bchs.--</u>												
Large.....	-	-	-	-	6.87	6.32	-	-	-	-	-	-
Florida:												
<u>Pompano Beach Section</u>						<u>Beans, Lima</u>						
<u>Sales to local buyers--</u>												
Lima, bushel hamper.....	5.75	4.54	-	4.72	4.55 ^{1/2}	3.77 ^{1/2}	-	-	-	-	-	-
Florida:												
<u>Dade County Points--</u>						<u>Beans, Snap</u>						
<u>Poles, bushel hamper.....</u>												
	3.78	5.25	5.21	3.74	-	-	-	-	-	-	4.88	3.90
<u>Lake Okechobee Section--</u>												
<u>Harvester, bushel hamper.....</u>												
	-	-	-	3.80	3.50	-	-	-	-	-	5.10	5.17
<u>Pompano Beach Section--</u>												
<u>Sales to local buyers--</u>												
<u>Harvester, bushel hamper.....</u>												
	3.67	7.24	6.40	3.74	-	-	-	-	-	-	5.40	5.22
New Jersey:												
<u>Cedarville Area - Auction sales--</u>												
<u>Harvester, bushel hamper.....</u>												
	-	-	-	-	-	3.24	4.05	2.95	3.34	-	-	-
California:												
<u>Oceano-Santa Maria-Guadalupe District--</u>												
<u>Crates, 14-bchs.....</u>												
	2.76	3.00	2.25	2.26	2.66	-	-	-	-	-	2.59	2.68

1/ Auction sales.

Table 3.--Continued

VEGETABLES--CONTINUED

Shipping point and description of sale	Jan.	Feb.	Mar.	Apr.	May	June	July	Aug.	Sept.	Oct.	Nov.	Dec.
	Dollars Per Unit											
Cabbages												
California:												
<u>El Centro (Imperial Valley)--</u>												
Domestic Round type, carton, 24s.	2.15	2.96	2.62	-	-	-	-	-	-	-	-	2.23
Florida:												
<u>Domestic Round type</u>												
<u>Hastings--</u>												
1-3/4-bushel crate	1.59	3.00	2.10	1.70	-	-	-	-	-	-	-	-
<u>Lake Okeechobee Section--</u>												
1-3/4-bushel crate	1.54	2.92	2.17	1.84	1.46	-	-	-	-	-	-	2.38
<u>Sanford-Oviedo-Zellwood Section--</u>												
1-3/4-bushel crate	1.58	3.14	2.42	2.20	1.58	-	-	-	-	-	-	-
New Jersey:												
<u>New Jersey Points</u>												
<u>Sales f.o.b. shipping point and delivered sales shipping point basis</u>												
<u>Domestic Round type--</u>												
Various used crts. (approx. 50-lbs.)	-	-	-	-	-	1.40	1.72	-	-	-	-	-
<u>Danish type--</u>												
Various used crts. (approx. 50-lbs.)	-	-	-	-	-	-	2.36	-	2.35	2.22	-	-
New York:												
<u>Western & Central New York Points</u>												
<u>Sales f.o.b. shipping point and delivered sales shipping point basis</u>												
<u>50-lb. sack--</u>												
Danish type, small-medium	.99	2.25	1.96	1.96	-	-	-	-	-	2.04 ^{2/}	2.35 ^{2/}	2.36 ^{2/}
Texas:												
<u>Lower Rio Grande Valley</u>												
<u>Domestic Round type--</u>												
1-3/4-bushel crate	1.85	3.46	2.35	2.07	-	-	-	-	-	-	-	2.27
50-lb. sack	1.51	3.00	1.97	1.72	-	-	-	-	-	-	-	1.88
Virginia:												
<u>Eastern Shore Points</u>												
<u>Sales f.o.b. shipping point and delivered sales shipping point basis</u>												
<u>Domestic Round type, 85% or more U.S.#1, quality--</u>												
1-3/4-bushel crate	-	-	-	-	-	1.80	-	-	-	-	-	-
CARROTS												
Arizona:												
<u>Phoenix & Central Arizona Points</u>												
<u>Topped, washed--</u>												
48-1-lb. film bag, mesh, master container	-	-	-	-	4.39	3.70	-	-	-	-	-	-
California:												
<u>Topped, washed</u>												
<u>El Centro (Imperial Valley)--</u>												
48-1-lb. film bag, mesh, master container	-	-	3.55	3.96	4.46	-	-	-	-	-	-	-
<u>Salinas-River City District--</u>												
48-1-lb. film bag, crate	-	-	-	-	-	3.87	3.47	3.13	3.00	3.00	3.01	3.08
Michigan:												
<u>Michigan Points</u>												
<u>Topped, washed--</u>												
48-1-lb. film bag, mesh, master container	-	-	-	-	-	-	-	2.98	2.65	2.51	2.80	-
Texas:												
<u>Lower Rio Grande Valley</u>												
<u>Topped, washed--</u>												
48-1-lb. film bag, mesh, master container	3.05	3.63	3.02	3.57	4.64	-	-	-	-	-	-	2.62
Cauliflower												
California:												
<u>Irvington-Alvarado-Centerville District--</u>												
<u>Flats & 2-layer ctns., film wrapped.</u>												
12s	3.36	3.43	2.82	2.56	-	-	-	-	-	-	2.94	3.38

2/ Medium.

Table 3.--Continued

VEGETABLES--CONTINUED

Shipping point and description of sale	Jan.	Feb.	Mar.	Apr.	May	June	July	Aug.	Sept.	Oct.	Nov.	Dec.
	Dollars Per Unit											
Cauliflower--Continued												
California:												
<u>Salinas-Watsonville District--</u>												
Flats & 2-layer ctns., film wrpd.												
12s	-	-	2.67	2.69	-	-	-	-	-	-	2.64	3.05
<u>Oceans-Santa Maria-Guadalupe District--</u>												
Flat crates, film wrapped, 12s ..	-	-	2.60	2.98	3.46	-	-	-	-	-	-	-
New York:												
<u>Long Island - Auction sales</u>												
<u>Long Island crate, various sizes--</u>												
Riverhead	-	-	-	-	-	-	-	-	3.63	3.15	2.72	3.81
Celery												
California:												
<u>Pascal type - 16-inch crate</u>												
<u>Southern California District--</u>												
2-3 dozen	3.44	3.66	2.80	2.18	3.35	4.13	4.04	-	-	-	2.67	2.38
<u>Salinas-Watsonville District--</u>												
2-3 dozen	-	-	-	-	-	-	4.02	3.46	2.29	1.92	2.52	2.27
Florida:												
<u>Lake Okeechobee Section</u>												
<u>Pascal type - 16-inch crate--</u>												
2-10-dozen	3.08	3.32	2.91	2.23	3.29	-	-	-	-	-	2.51	2.06
Michigan:												
<u>West Michigan Points</u>												
<u>Pascal type - 16-inch crate--</u>												
2-4 dozen	-	-	-	-	-	-	4.30	3.94	3.45	2.62	-	-
New York:												
<u>Western & Central New York Points</u>												
<u>Sales f.o.b. shipping point and delivered sales shipping point basis</u>												
<u>Pascal type - 16-inch crate--</u>												
2-6 dozen	-	-	-	-	-	-	-	-	3.14	2.49	2.96	-
Corn, Sweet												
Florida:												
<u>U. S. Fancy - Yellow, 5-dozen crate--</u>												
Lake Okeechobee Section	3.36	3.92	4.32	3.38	1.92 ^{2/3}	-	-	-	-	-	2.51	2.98
Sanford-Oviedo-Zellwood Section ..	-	-	-	-	-	1.86	-	-	-	-	-	-
New Jersey:												
<u>New Jersey Points</u>												
<u>Sales f.o.b. shipping point and delivered sales shipping point basis--</u>												
Yellow, 4 $\frac{1}{2}$ -5 dozen, crate	-	-	-	-	-	-	3.39	-	-	-	-	-
Texas:												
<u>Lower Rio Grande Valley--</u>												
Yellow, clipped, 5-5 $\frac{1}{2}$ dozen wirebound crate	-	-	-	-	1.70	-	-	-	-	-	-	-
Yellow, clipped, 5-5 $\frac{1}{2}$ dozen mesh & film bags	-	-	-	-	1.50	-	-	-	-	-	-	-
Cucumbers												
Florida:												
<u>Ft. Myers-Immokalee Section--</u>												
Bu. bkt. & 1-1/9 -bu. crt., waxed ..	4.65	-	-	4.06	4.12	-	-	-	-	-	4.52	5.62
<u>Pompano Beach Section & Nearby Points--</u>												
Bushel basket, waxed	5.31	-	-	5.46	-	-	-	-	-	-	4.65	5.79
Imports packed locally, bu. bkt & 1-1/9 bu. crt., waxed	7.26	11.03	13.86	-	-	-	-	-	-	-	-	7.92
New Jersey:												
<u>New Jersey Points</u>												
<u>Sales f.o.b. shipping point and delivered sales shipping point basis--</u>												
Bushel basket, washed, waxed	-	-	-	-	-	-	5.02	-	-	-	-	-
Eggplant												
Florida:												
<u>Plant City - Auction sales--</u>												
Bushel hamper	-	-	-	-	3.40	2.80	-	-	-	-	-	-
<u>Pompano Beach Section</u>												
<u>Sales to local buyers--</u>												
Bu. Bkt. & 1-1/9-bu. crt., wrapped ..	2.61	3.50	4.71	2.06	-	-	-	-	-	-	2.96	1.65

3/ 4 $\frac{1}{2}$ -5 dozen.

Table 3.--Continued

VEGETABLES--CONTINUED

Shipping point and description of sale	Jan.	Feb.	Mar.	Apr.	May	June	July	Aug.	Sept.	Oct.	Nov.	Dec.
	Dollars Per Unit											
eggplant--Continued												
New Jersey:												
Vinland Area - Auction sales												
High Bush Type--												
Bushel basket	-	-	-	-	-	-	-	1.86	2.20	2.86	-	-
Kecarole												
Florida:												
Lake Okechobee Section--												
1-1/9 bushel crate	1.14	2.16	1.14	.85	1.18	-	-	-	-	-	1.49	.90
Lettuce												
Arizona:												
Iceberg type, standard carton, 24s--												
Phoenix & Central Arizona Points.	-	-	1.68	2.38	1.41	-	-	-	-	-	2.12	1.28
Willcox & Eastern Arizona Points.	-	-	-	-	1.29	1.75	-	-	-	2.90	-	-
California:												
Iceberg type, standard carton, 24s--												
El Centro (Imperial Valley).....	3.60	3.72	2.39	-	-	-	-	-	-	-	-	1.30
Salinas-Watsonville District	-	-	-	2.00	1.22	1.85	3.26	2.76	2.38	2.26	-	-
New Jersey:												
South N.J. Points												
Sales f.o.b. shipping point and delivered sales shipping point basis--												
Iceberg type, Eastern iceberg crates and cartons, 24s .	-	-	-	-	-	1.90	-	-	-	2.39	-	-
Texas:												
Lower Rio Grande Valley--												
Iceberg type, standard ctn., 24s.	3.46	3.45	2.21	-	-	-	-	-	-	-	-	1.31
Onion, Dry												
Arizona:												
Phoenix & Central Arizona Points												
U.S. No. 1, 50-lb. sack--												
Yellow Granex, medium	-	-	-	-	2.75	-	-	-	-	-	-	-
Yellow Granex, large	-	-	-	-	2.74	2.16	-	-	-	-	-	-
California:												
Stockton District												
U.S. No. 1, 50-lb. sack--												
Stockton Yellow Globe, medium ...	-	-	-	-	-	1.93	-	-	-	-	-	-
Stockton Yellow Globe, large	-	-	-	-	-	3.14	-	-	-	-	-	-
Colorado:												
North & East Colorado Points												
Sales f.o.b. shipping point and delivered sales shipping point basis												
U.S. No. 1, 50-lb. sack--												
Spanish type, 3-in. & lgr.	-	-	-	-	-	-	-	-	2.09	2.12	2.66	-
Idaho-Oregon:												
Western Idaho-Malheur County Oregon												
U.S. No. 1, 50-lb. sack--												
Yellow Spanish, 2-3 in.63	1.15	.96	-	-	-	-	-	1.72	1.66	2.08	2.30
Yellow Spanish, 3-in. & lgr. ...	1.26	1.88	2.32	-	-	-	-	-	1.82	2.05	2.60	2.86
Michigan:												
Michigan Points												
U.S. No. 1, 50-lb. sack--												
Yellow Globe, 70-80% 2-in. & lgr.	.83	1.24	1.20	-	-	-	-	-	2.24 ^{4/}	2.21 ^{4/}	2.28 ^{4/}	2.42 ^{4/}
New Jersey:												
New Jersey Points												
Sales f.o.b. shipping point and delivered sales shipping point basis												
50-lb. sack--												
Yellow, medium	-	-	-	-	-	-	3.92	-	-	-	-	-
New York:												
Western & Central New York Points												
Sales f.o.b. shipping point and delivered sales shipping point basis												
U.S. No. 1, 50-lb. sack--												
Yellow Globe, 60-80% 2-in. & lgr.	.91	1.42	1.32	2.11	-	-	-	-	-	2.40 ^{5/}	2.38 ^{5/}	2.59 ^{5/}

4/ 70% 2-inch & larger.

5/ 60-70% 2-inch & larger.

Table 3.--Continued

VEGETABLES--CONTINUED

Shipping point and description of sale	Jan.	Feb.	Mar.	Apr.	May	June	July	Aug.	Sept.	Oct.	Nov.	Dec.
	Dollars Per Unit											
Onions, Dry--Continued												
Texas:												
<u>Lower Rio Grande Valley</u>												
<u>50-lb. sack--</u>												
Yellow Granex, medium	-	-	-	3.40	2.99	-	-	-	-	-	-	-
Yellow Granex, large	-	-	-	4.27	3.59	-	-	-	-	-	-	-
Yellow Grano, medium	-	-	-	3.27	2.92	-	-	-	-	-	-	-
Yellow Grano, large	-	-	-	4.97	4.39	-	-	-	-	-	-	-
Whites, medium	-	-	-	5.32	5.17	-	-	-	-	-	-	-
Whites, large	-	-	-	5.37	-	-	-	-	-	-	-	-
<u>Hinter Garden-Eagle Pass District</u>												
<u>50-lb. sack--</u>												
Yellow Granex, medium	-	-	-	-	2.34	-	-	-	-	-	-	-
Yellow Granex, large	-	-	-	-	2.93	-	-	-	-	-	-	-
Yellow Grano, medium	-	-	-	-	2.20	-	-	-	-	-	-	-
Yellow Grano, large	-	-	-	-	3.40	-	-	-	-	-	-	-
Whites, medium	-	-	-	-	4.38	-	-	-	-	-	-	-
Whites, large	-	-	-	-	4.80	-	-	-	-	-	-	-
Peppers, Green												
California:												
<u>Fresno-Central San Joaquin Valley</u>												
<u>Calif. Wonder type--</u>												
30-lb. carton, large	-	-	-	-	-	4.66	3.56	-	-	-	-	-
<u>Salinas-Gilroy, Hollister, San Jose, King City Districts</u>												
<u>Calif. Wonder type--</u>												
Approx. 30-lb. carton	-	-	-	-	-	-	-	3.23	2.76	3.38	-	-
Florida:												
<u>Plant City - Auction sales</u>												
<u>Bushel hampers--</u>												
Calif. Wonder type, large	-	-	-	-	3.40	4.50	-	-	-	-	-	-
New Jersey:												
<u>Auction sales</u>												
<u>Calif. Wonder type, bushel basket--</u>												
Vineland Area	-	-	-	-	-	-	-	2.38	2.40	1.89	-	-
Texas:												
<u>Lower Rio Grande Valley</u>												
<u>Cartons, approx. 30-lbs.--</u>												
Calif. Wonder Type, med.-lge. ..	-	-	-	-	-	-	-	-	-	-	4.00	2.91
Potatoes												
Alabama:												
<u>Foley & Southern Alabama Points</u>												
<u>Delivered sales shipping point basis</u>												
<u>100-lb. sack, washed, U.S. No. 1, Size A--</u>												
Round Reds	-	-	-	-	2.75	2.10	-	-	-	-	-	-
Sebagoes	-	-	-	-	-	2.92	-	-	-	-	-	-
Arizona:												
<u>Phoenix & Central Arizona Points</u>												
<u>100-lb. sack, washed, U.S. No. 1, Size A--</u>												
Round Reds	-	-	-	-	-	1.93	-	-	-	-	-	-
California:												
<u>Kern County Points</u>												
<u>Sales f.o.b. shipping point and delivered sales shipping point basis</u>												
<u>100-lb. sack, washed, U.S. No. 1, Size A--</u>												
Long Whites	-	-	-	-	2.68	1.73	1.74	-	-	-	-	-
<u>Chino-Ferris Valley District</u>												
<u>100-lb. sack, washed, U.S. No. 1, Size A--</u>												
Long Whites	-	-	-	-	-	-	1.86	2.12	-	-	-	-
<u>Stockton-Delta District</u>												
<u>100-lb. sack, washed, U.S. No. 1, Size A--</u>												
Long Whites	-	-	-	-	-	-	-	2.27	3.16	-	-	-
Colorado:												
<u>Sales f.o.b. shipping point and delivered sales shipping point basis</u>												
<u>100-lb. sack, washed, U.S. No. 1, Size A</u>												
<u>North & East Colorado Points--</u>												
Round Reds, 2-in. min.	-	-	-	-	-	-	-	2.49	2.38	-	-	-
Margold, 2-in. or 4-oz. min. ...	-	-	-	-	-	-	-	2.73	3.01	-	-	-

Table 3.--Continued

VEGETABLES--CONTINUED

Shipping point and description of sale	Jan.	Feb.	Mar.	Apr.	May	June	July	Aug.	Sept.	Oct.	Nov.	Dec.
	Dollars Per Unit											
Colorado: Continued												
San Luis Valley												
Red McClures 2-1/8 in. up	2.35	2.36	2.15	2.48	-	-	-	-	-	2.29	2.35	2.34
Russet Burbank, 2-in. or 4-oz. min.	2.82	2.85	2.84	3.44	-	-	-	-	-	3.25	3.74	3.75
Delaware:												
Dover & Nearby Points												
<u>Sales f.o.b. shipping point and delivered sales shipping point basis</u>												
<u>50s CWT. Basis, Unwashed, U.S. No. 1, Size A--</u>												
Round Whites	-	-	-	-	-	-	-	2.82	2.56	-	-	-
Florida:												
Dade County Section												
<u>50-lb. sack, washed--</u>												
Round Reds, U.S. No. 1, Size A ..	-	-	2.29	2.92	-	-	-	-	-	-	-	-
U.S. No. 1, Size B ..	-	-	2.14	2.40	-	-	-	-	-	-	-	-
Hastings Section												
<u>Delivered sales shipping point basis</u>												
<u>To Processors - 100-lb. sack--</u>												
Sebagoes, washed and unwashed mostly washed 1-5/8-in. min. some 1-7/8 in. min. 85% or better U.S. #1, quality	-	-	-	4.58	3.25	-	-	-	-	-	-	-
<u>Table Stock - 50-lb. sack, washed--</u>												
Sebagoes, U.S. No. 1, Size A	-	-	-	1.99	-	-	-	-	-	-	-	-
Idaho:												
<u>Sales f.o.b. shipping point and delivered sales shipping point basis</u>												
<u>100-lb. sack, washed, U.S. No. 1, Size A</u>												
<u>Upper Valley-Twin Falls-Burley Districts--</u>												
Russet Burbank, 2-in. or 4-oz. min.	2.84	3.08	3.06	3.32	-	-	-	-	-	3.53	3.80	3.77
10-oz. min.	4.04	3.91	4.29	5.07	-	-	-	-	-	3.33	3.76	4.00
U.S. No. 2, 6-oz. min.	2.02	1.98	2.07	2.22	-	-	-	-	-	1.79	1.60	1.46
Western Idaho & Malheur County, Oregon--												
Norgold, 2-in. or 4-oz. min. ..	-	-	-	-	-	-	-	2.52	-	-	-	-
Russet Burbank, 2-in. or 4-oz. min.	-	-	-	-	-	-	-	-	3.58	-	-	-
Maine:												
Arcoosook County Points												
<u>Sales f.o.b. shipping point and delivered sales shipping point basis</u>												
<u>U.S. No. 1, 2-in. min. - 50-lb. sack--</u>												
Var. varie. mostly Katahdin type.	1.11	1.12	1.41	1.68	1.86	1.63	-	-	-	1.18	1.18	1.18
Maryland-Virginia:												
Eastern Shore Points												
<u>Sales f.o.b. shipping point and delivered sales shipping point basis</u>												
<u>U.S. No. 1, Size A, washed & unwashed, 100-lb. sack--</u>												
Round Whites, various varieties .	-	-	-	-	-	1.98	1.90	-	-	-	-	-
Michigan:												
<u>Delivered sales shipping point basis</u>												
Bay County District												
<u>U.S. No. 1, Size A, 50-lb. sack--</u>												
Onaways, mostly washed	-	-	-	-	-	-	-	1.38	-	-	-	-
Montcalm-Kent Counties & Lower Michigan Points												
<u>U.S. No. 1, Size A - 50-lb. sack--</u>												
Round Whites mostly washed	1.36	1.42	1.48	-	-	-	-	-	1.24	1.44	1.54	1.38
New Jersey:												
South & Central New Jersey Points												
<u>Sales f.o.b. shipping point and delivered sales shipping point basis</u>												
<u>U.S. No. 1, Size A, unwashed, 50-lb. sack--</u>												
Round Whites	-	-	-	-	-	-	-	-	1.33	1.32	1.37	1.32
New York:												
Riverhead & Nearby Long Island Points												
<u>Delivered sales shipping point basis</u>												
<u>U.S. No. 1, Size A--</u>												
Round Whites 2-in. min., 50-lb. sack unwashed	1.40	1.39	1.56	-	-	-	-	1.46	1.49	1.56	1.54	1.50
Russet Burbank, 2-in. or 4-oz. min. 50-lb. sack, washed	1.43	1.32	1.52	-	-	-	-	-	1.94	1.89	1.88	1.89
Western & Central New York Points												
<u>Sales f.o.b. shipping point and delivered sales shipping point basis</u>												
<u>U.S. No. 1, Size A, washed, 50-lb. sack--</u>												
Round White varieties	1.41	1.59	1.75	2.20	-	-	-	-	1.48	1.52	1.58	1.54

Table 3.--Continued

VEGETABLES--CONTINUED

Shipping point and description of sale	Jan.	Feb.	Mar.	Apr.	May	June	July	Aug.	Sept.	Oct.	Nov.	Dec.
	Dollars Per Unit											
Potatoes--Continued												
North Carolina:												
<u>Elizabeth City & Eastern North Carolina Points</u>												
<u>Sales f.o.b. shipping point and delivered sales shipping point basis</u>												
<u>U.S. No. 1, Size A, washed & unwashed, 100-lb. sack--</u>												
Pungo	-	-	-	-	-	2.13	1.61	-	-	-	-	-
Oregon-California:												
<u>Klamath Basin Area</u>												
<u>Sales f.o.b. shipping point and delivered sales shipping point basis</u>												
<u>U.S. No. 1, Size A, washed, 100-lb. sack--</u>												
Russet Burbank, 2-in. or 4-oz. min.	2.96	3.06	3.06	-	-	-	-	-	-	3.27	3.42	3.90
Pennsylvania:												
<u>East Pennsylvania Points</u>												
<u>Sales f.o.b. shipping point and delivered sales shipping point basis</u>												
<u>U.S. No. 1, Size A, unwashed, 50-lb. sack--</u>												
Mostly Katahdin	1.40	1.40	-	-	-	-	-	-	-	-	-	1.38
Texas:												
<u>Lower Rio Grande Valley</u>												
<u>50-lb. sack, washed--</u>												
Round Reds, U.S. No. 1, Size A ..	-	-	-	3.06	-	-	-	-	-	-	-	-
U.S. No. 1, Size B ..	-	-	-	2.82	-	-	-	-	-	-	-	-
Washington:												
<u>Yakima Valley-Columbia Basin Area</u>												
<u>U.S. No. 1, Size A, washed, 100-lb. sack--</u>												
Norgold, 2-in. or 4-oz. min.	-	-	-	-	-	-	2.66	2.49	-	-	-	-
Russet Burbank, 2-in. or 4-oz. min.	2.63	2.70	2.69	-	-	-	-	2.66	2.79	2.75	3.35	3.50
Wisconsin:												
<u>Central & North Central Wisconsin Points</u>												
<u>Sales f.o.b. shipping point and delivered sales shipping point basis</u>												
<u>U.S. No. 1, Size A, washed, 100-lb. sack--</u>												
Early Gem	-	-	-	-	-	-	-	2.36	-	-	-	-
Round Reds	-	-	-	-	-	-	-	2.12	1.92	2.29	2.35	2.30
Round Whites	-	-	-	-	-	-	-	2.20	2.10	2.16	2.50	2.50
Russets	-	-	-	-	-	-	-	-	2.87	3.00	3.22	3.34
Spinach												
Texas:												
<u>Eagle Pass-Winter Garden District--</u>												
Savoy type, bushel basket.....	1.52	1.81	1.67	-	-	-	-	-	-	-	-	1.77
Sweetpotatoes												
California: - (Semi-weekly)												
<u>Stockton-Atwater-Livingston District</u>												
<u>40-lb. carton--</u>												
Yellow Jersey	4.94	4.90	4.97	4.87	-	-	-	-	5.69	5.00	5.06	5.78
Porto Rico type	4.11	4.20	4.19	4.18	-	-	-	-	3.75	3.70	3.91	4.56
Louisiana:												
<u>Southwest Louisiana Points</u>												
<u>Porto Rico type, 30-lb. crate--</u>												
U.S. No. 1, cured	3.30	3.20	3.10	3.05	3.05	-	-	-	-	-	4.50	4.50
U.S. No. 1, uncured	-	-	-	-	-	-	-	3.62	3.13	3.24	3.57	-
U.S. No. 2, cured	2.25	2.20	2.08	1.88	1.80	-	-	-	-	-	3.08	3.00
U.S. No. 2, uncured	-	-	-	-	-	-	-	2.15	2.08	2.09	2.19	-
New Jersey: - (Semi-weekly)												
<u>South & Central New Jersey Points</u>												
<u>Sales f.o.b. shipping point and delivered sales shipping point basis</u>												
<u>U.S. No. 1, or better, washed, waxed & cured</u>												
<u>Bushel Basket--</u>												
Orange Jersey type	2.50	2.50	2.62	2.48	-	-	-	-	-	-	-	-
Yellow Jersey type	2.92	3.00	2.90	-	-	-	-	-	-	-	-	-
Centennial	-	-	2.48	2.44	-	-	-	-	-	-	-	-
North Carolina:												
<u>Eastern North Carolina Points</u>												
<u>50-lb. crate, carton & bushel basket</u>												
<u>washed, waxed - U.S. No. 1--</u>												
Porto Rico type, uncured	-	-	-	-	-	-	-	-	3.00	2.94	3.29	-
cured	-	-	-	-	-	-	-	-	-	-	4.38	4.37

Table 3.--Continued

VEGETABLES--CONTINUED

Shipping point and description of sale	Jan.	Feb.	Mar.	Apr.	May	June	July	Aug.	Sept.	Oct.	Nov.	Dec.
	Dollars Per Unit											
Virginia: - (Semi-weekly)												
Eastern Shore Points												
Sweetpotatoes--Continued												
Sales f.o.b. shipping point and delivered sales shipping point basis												
Bushel Basket - washed & waxed												
Nemagold, uncured.....	-	-	-	-	-	-	-	-	-	2.57	-	-
cured.....	-	-	-	-	-	-	-	-	-	-	-	3.50
California:												
Cutler-Croci District-Central, San Joaquin Valley												
Pinks, 2-layer flats--												
5x6 & larger.....	-	-	-	-	-	3.82	3.92	-	-	-	-	-
El Centro (Imperial Valley)												
85% or more U.S.No. 1, quality												
Green, unwrapped, Loose, 40-lb. carton--												
6x6 & larger.....	-	-	-	-	-	5.64	-	-	-	-	-	-
6x7	-	-	-	-	-	4.64	-	-	-	-	-	-
Pinks, 2-layer flats--												
5x6 & larger.....	-	-	-	-	-	3.70	-	-	-	-	-	-
Merced District-Central, San Joaquin Valley												
U.S.No. 1 - 40-lb. carton--												
Green, unwrapped, waxed												
6x6 & larger.....	-	-	-	-	-	5.39	5.56	-	-	-	-	-
6x7	-	-	-	-	-	4.50	4.42	-	-	-	-	-
Gonzales-King City District-Salinas												
85% or more U.S.No. 1, quality												
Loose, Approx. 40-lb. cartons & crates--												
Green, unwrapped												
5x6 & larger.....	-	-	-	-	-	-	-	4.01	3.86	3.88	-	-
6x6	-	-	-	-	-	-	-	3.02	3.10	3.33	-	-
6x7	-	-	-	-	-	-	-	1.88	2.32	2.95	-	-
N. San Joaquin Valley-Stockton												
85% or more U.S.No. 1, quality												
Loose, 40-lb. cartons & crates--												
Green, unwrapped												
5x6 & larger.....	-	-	-	-	-	-	-	-	3.98	4.39	5.00	-
6x6	-	-	-	-	-	-	-	-	3.52	4.38	5.00	-
6x7	-	-	-	-	-	-	-	-	2.89	4.02	4.16	-
Pinks, 2-layer flats--												
5x6 & larger.....	-	-	-	-	-	-	-	-	2.49	2.68	2.98	-
Florida:												
Dade County Points												
85% or more U.S.No. 1, quality												
Green, unwrapped, 40-lb. carton--												
6x6 & larger.....	4.43	5.48	5.88 ^{6/}	8.12 ^{6/}	-	-	-	-	-	-	-	7.80
6x7	3.32	4.40	-	-	-	-	-	-	-	-	-	4.36
Ft. Myers-Immokalee-Ft. Pierce Section												
85% or more U.S.No. 1, quality												
Green, unwrapped, 40-lb. carton--												
6x6 & larger.....	-	-	-	5.75	3.59	-	-	-	-	-	-	8.90
6x7	-	-	-	3.50	3.12	-	-	-	-	-	-	5.95
Florida West Coast Section												
85% or more U.S.No. 1, quality												
Green, unwrapped, 40-lb. carton--												
6x6 & larger.....	-	-	-	-	3.82	-	-	-	-	-	-	-
6x7	-	-	-	-	3.16	-	-	-	-	-	-	-
Pompano Beach Section & Nearby Points												
Vine ripe, Stake Grown, wrapped--												
8-lb. carton, med-lge.....	1.28	1.10	1.26	2.03	-	-	-	-	-	-	-	-
20-lb. carton, large.....	3.75	3.05	3.75	5.14	-	-	-	-	-	-	-	5.31
20-lb. carton, med-lge.....	2.81	2.38	2.82	3.89	-	-	-	-	-	-	-	4.02
New Jersey:												
Svedesboro Area - Auction sales												
Pinks												
12-quart climax basket, med-lge...	-	-	-	-	-	-	2.96	1.73	-	-	-	-
New York:												
Western & Central New York Points												
Sales f.o.b. shipping point and delivered sales shipping point basis												
85% or better U.S.No. 1, quality												
Green, waxed, 40-lb. carton--												
6x6 & larger.....	-	-	-	-	-	-	-	-	3.51	3.88	-	-

5/65-80% U.S.No. 1, quality.

Table 3.--Continued

VEGETABLES--CONTINUED

Shipping point and description of sale	Jan.	Feb.	Mar.	Apr.	May	June	July	Aug.	Sept.	Oct.	Nov.	Dec.
	- - - Dollars Per Unit - - -											
<u>Ohio</u>												
<u>Cleveland-Northern Ohio Districts</u>												
<u>Greenhouse Grown, U.S.No.1, 8-lb.basket--</u>												
Medium.....	-	-	3.25	2.91	2.10	2.37	2.42	-	-	2.19	2.10	2.64
<u>Pennsylvania:</u>												
<u>East Penna. Points</u>												
<u>Sales f.o.b. shipping point and delivered sales shipping point basis</u>												
<u>85% or better U.S.No. 1, quality</u>												
<u>Green, 40-lb.carton--</u>												
<u>Northeast Area--</u>												
6x6 & larger.....	-	-	-	-	-	-	-	3.44	3.25 ^{7/}	-	-	-
<u>Texas:</u>												
<u>Lower Rio Grande Valley Points</u>												
<u>U.S.No.1, 40-lb.carton--</u>												
<u>Green, unwrapped</u>												
6x6 & larger.....	-	-	-	-	-	4.58	-	-	-	-	-	-
6x7	-	-	-	-	-	4.04	-	-	-	-	-	-
<u>Mexico:</u>												
<u>West Mexico District, Nogales, Ariz.(Port of Entry)</u>												
<u>Duty and crossing charges extra</u>												
<u>85% or more U.S.No. 1, quality</u>												
<u>Green, 40-lb. carton--</u>												
6x6 & larger.....	-	-	3.76	-	-	-	-	-	-	-	-	-
<u>Duty and crossing charges paid</u>												
<u>Vine ripe - 2-layer flats--</u>												
5x6 & larger.....	3.26	2.92	2.75	4.71	3.54	-	-	-	-	-	-	4.30

7/ 70-80% U.S.No. 1, quality.

Table 4.--Computed wholesale values ^{1/} per carlot of domestic fruits and vegetables, New York City and Chicago, by months, 1965 and 1966
(Values are based on stock of good merchantable quality and condition)

Year, Market and commodity	Jan.	Feb.	Mar.	Apr.	May	June	July	Aug.	Sept.	Oct.	Nov.	Dec.	Year
	- - - Dollars Per Unit - - -												
1965 - New York City													
Fruits	3433	3423	3381	3134	2944	3457	2873	2829	3283	3178	3224	3107	3164
Vegetables	2543	2673	2953	3183	3469	2716	2313	1738	1784	1927	2311	2300	2494
Fruits and Vegetables	2853	2963	3108	3166	3274	3042	2572	2252	2398	2352	2610	2580	2755
1965 - Chicago													
Fruits	3351	3248	3287	3305	2818	3056	2619	2718	3451	3282	3134	3576	3086
Vegetables	2565	2599	2711	3250	3695	3004	2411	1856	1926	2156	2248	2335	2575
Fruits and Vegetables	2792	2798	2886	3265	3429	3023	2509	2182	2402	2417	2492	2704	2741
1966 - New York City													
Fruits	3156	3466	3570	3561	3649	3832	3993	3930	4579	3853	3621	3476	3774
Vegetables	2864	3168	3072	3073	2917	2898	2948	2651	2450	2461	2867	2998	2868
Fruits and Vegetables	2970	3282	3240	3220	3162	3338	3486	3255	3349	3002	3145	3174	3230
1966 - Chicago													
Fruits	2993	3332	3311	3571	3687	3700	3715	3611	3839	3962	3392	3406	3581
Vegetables	2692	2804	2718	3043	2894	2786	3163	2693	2311	2570	2881	2729	2775
Fruits and Vegetables	2782	2961	2888	3179	3082	3130	3403	3039	2815	2978	3017	2936	3033

^{1/} The monthly carlot values in this table were computed from representative average prices including both private sales and auction transactions, and average quantities per carload of each leading fruit and vegetable. For each commodity this average monthly carlot value was weighted by domestic carload, boat and available truck unloads in obtaining a monthly average carlot value for all commodities. Estimates of farmers' market truck receipts were not available for Chicago. Estimated values for the year were obtained by weighting the monthly figures shown in the table by the monthly unloads.

Fruits include: Apples, blueberries, cantaloups, cherries, cranberries, grapefruit, grapes, honeydew melons, lemons, oranges, peaches, pears, plums and fresh prunes, strawberries and watermelons. Vegetables include: Asparagus, beans, snap beans, broccoli, cabbage, carrots, cauliflower, celery, corn, cucumbers, eggplants, escarole, lettuce, mushrooms, onions, peas, peppers, potatoes, radishes, spinach, sweetpotatoes and tomatoes.

The ratio of the volume used each month to total domestic unloads varied generally from 85 to 95 percent. Some of the minor commodities were not used in the computations. Their inclusion would make little difference in the average value per car.

Table 5.--Index of wholesale value of fresh fruits and vegetables at
New York City and Chicago, by months, 1947-66 1/

Corresponding month 1957-59 = 100

Market, commodity and year	Jan.	Feb.	Mar.	Apr.	May	June	July	Aug.	Sept.	Oct.	Nov.	Dec.	Year
NEW YORK													
Fruits													
1947	79	91	87	84	83	81	67	78	79	88	85	76	80
1948	72	74	75	67	72	76	81	86	79	84	88	86	79
1949	90	95	96	97	85	84	78	70	63	84	82	81	81
1950	92	98	98	88	88	89	79	83	75	91	94	87	87
1951	87	98	88	77	71	76	78	90	85	94	90	88	84
1952	88	89	95	97	74	93	99	90	88	106	104	101	94
1953	103	106	105	101	84	89	92	92	87	99	109	97	95
1954	92	95	94	89	86	91	94	94	95	105	106	94	96
1955	93	96	89	101	94	110	101	91	78	91	98	93	95
1956	89	97	98	88	89	110	99	101	95	116	119	114	103
1957	111	108	94	96	93	111	120	107	95	102	98	96	105
1958	94	97	106	110	115	98	86	94	103	105	107	100	99
1959	95	95	100	94	92	91	95	99	103	93	95	104	96
1960	118	121	111	123	113	107	109	110	129	126	133	133	117
1961	144	136	140	128	98	99	117	124	134	118	119	148	122
1962	135	133	147	124	96	104	109	120	115	123	122	138	118
1963	155	154	162	144	102	108	134	124	111	124	132	142	128
1964	145	147	152	145	102	133	135	122	125	137	139	144	133
1965	149	148	142	122	98	120	113	120	120	122	125	130	123
1966	137	150	150	139	121	133	157	167	168	148	141	146	147
Vegetables													
1947	81	88	89	87	97	93	79	80	89	96	104	100	90
1948	98	99	93	103	109	98	95	82	83	79	88	83	92
1949	97	98	98	95	95	93	88	87	88	77	97	84	91
1950	80	77	74	86	84	87	78	66	67	75	86	87	79
1951	89	93	80	92	89	108	75	76	81	91	123	129	94
1952	114	103	106	124	106	113	127	109	103	100	118	118	112
1953	118	100	109	110	90	129	88	91	72	77	91	90	98
1954	87	84	80	85	93	85	92	86	82	82	163	93	87
1955	92	94	96	98	92	76	73	104	100	96	107	94	93
1956	109	94	100	95	111	137	118	92	84	98	108	102	105
1957	95	94	89	96	100	111	115	118	99	100	98	104	102
1958	109	109	118	110	106	97	92	85	80	90	97	91	98
1959	96	97	93	95	94	92	94	97	121	110	105	105	100
1960	128	124	123	131	131	117	113	114	112	114	123	113	122
1961	117	114	113	110	113	126	124	119	120	117	118	103	117
1962	121	127	137	119	133	129	125	122	118	108	115	122	124
1963	129	127	120	110	108	134	134	116	111	110	129	133	122
1964	131	135	131	117	127	162	158	149	131	142	157	136	140
1965	141	150	157	163	180	167	154	128	127	128	141	127	150
1966	159	178	164	158	151	179	196	196	174	164	175	166	172
Fruits and Vegetables													
1947	81	92	91	87	94	83	72	78	85	95	97	91	86
1948	88	89	87	91	96	84	85	83	81	85	91	85	87
1949	95	98	98	96	92	86	82	77	74	82	92	84	87
1950	86	86	83	87	85	86	78	75	69	85	91	88	83
1951	89	97	84	87	83	90	77	86	85	96	109	113	90
1952	104	98	103	113	95	101	111	97	94	105	113	111	104
1953	112	103	108	107	89	106	90	91	81	91	102	92	97
1954	89	89	85	86	91	90	94	94	91	98	138	93	92
1955	96	95	95	98	93	89	89	96	89	97	104	94	94
1956	102	96	99	92	104	122	107	97	89	110	115	106	104
1957	101	98	91	96	99	110	117	111	96	103	98	101	103
1958	104	105	114	110	106	97	85	91	92	95	102	94	99
1959	95	96	95	95	95	93	95	99	112	102	100	106	99
1960	125	124	119	129	125	112	111	112	120	118	127	123	120
1961	127	122	123	117	110	113	121	123	132	119	118	121	120
1962	128	130	142	122	121	116	117	123	116	115	119	130	122
1963	141	139	134	121	110	121	135	122	113	118	129	138	126
1964	138	142	140	126	120	145	144	133	129	139	149	139	137
1965	146	152	153	150	148	141	129	124	123	123	133	129	138
1966	152	168	160	153	143	155	175	179	172	157	160	159	162

See footnote at end of table.

Table 5--Continued

Market, commodity and year	Jan.	Feb.	Mar.	Apr.	May	June	July	Aug.	Sept.	Oct.	Nov.	Dec.	Year
CHICAGO													
Fruits													
1947	74	93	81	75	72	65	69	71	77	76	75	67	72
1948	65	70	71	79	59	57	64	77	76	81	85	79	70
1949	90	91	95	93	86	63	63	63	65	76	74	79	73
1950	88	99	90	88	78	65	72	86	85	85	86	86	80
1951	84	96	90	76	67	58	63	85	88	86	91	92	77
1952	98	99	93	85	81	72	73	79	87	98	97	98	84
1953	99	101	107	102	83	64	73	81	93	96	109	99	87
1954	97	89	95	94	76	56	80	89	101	103	103	95	86
1955	111	96	100	97	101	104	96	104	93	95	99	99	99
1956	95	99	96	97	101	101	97	109	96	105	108	107	102
1957	112	104	105	100	97	104	114	102	93	96	93	96	102
1958	92	95	100	103	102	103	87	95	99	104	101	97	97
1959	96	101	96	98	101	93	99	103	108	100	106	107	101
1960	119	125	124	120	104	87	88	95	112	127	137	134	107
1961	134	135	133	128	92	81	94	98	108	113	119	127	106
1962	135	133	135	112	90	78	79	100	113	118	126	130	103
1963	146	149	149	138	92	78	104	101	112	120	133	136	112
1964	135	141	142	137	87	91	93	103	118	128	128	134	112
1965	138	135	128	115	81	84	85	106	126	119	120	136	108
1966	123	138	129	125	106	102	120	140	140	144	130	130	125
Vegetables													
1947	77	80	73	82	93	86	91	100	85	87	99	100	88
1948	107	107	92	105	109	99	88	77	99	82	80	82	94
1949	101	109	94	92	91	82	81	90	90	74	85	82	89
1950	87	82	74	86	84	81	87	84	69	72	79	87	81
1951	85	93	82	88	91	98	89	86	93	89	116	120	94
1952	117	108	106	107	110	118	127	119	103	107	111	106	111
1953	105	102	90	89	89	99	92	91	85	77	86	76	91
1954	83	71	83	90	90	96	100	82	76	90	90	81	87
1955	88	88	86	104	96	87	75	79	91	84	81	87	88
1956	97	101	103	104	103	126	135	105	84	93	98	96	105
1957	94	95	89	97	99	106	113	115	100	100	103	116	102
1958	112	112	120	112	108	91	94	82	84	89	93	87	98
1959	94	93	91	91	93	104	93	103	116	111	104	97	99
1960	135	119	119	127	115	115	129	129	123	117	114	114	122
1961	114	111	110	113	111	116	114	111	109	113	112	107	113
1962	123	135	143	133	134	125	121	114	118	118	114	119	126
1963	117	110	111	107	102	122	136	125	108	115	121	127	117
1964	133	126	121	116	118	138	131	134	129	144	147	147	132
1965	153	156	146	171	188	166	150	136	140	145	132	129	153
1966	161	168	147	160	147	154	197	197	168	173	170	151	165
Fruits and Vegetables													
1947	78	86	78	81	88	73	78	85	84	85	91	88	82
1948	92	94	86	98	91	77	75	76	89	84	83	82	84
1949	99	103	94	92	89	73	73	75	76	73	82	81	82
1950	89	89	79	87	82	73	78	81	76	80	80	84	81
1951	84	95	85	84	83	77	75	85	91	88	108	109	87
1952	111	104	102	100	101	94	97	96	96	104	107	103	100
1953	103	102	93	94	88	81	83	88	90	86	96	85	90
1954	88	81	88	92	87	76	91	88	89	103	96	86	88
1955	93	92	92	101	100	95	87	97	93	93	89	92	94
1956	97	102	101	103	105	116	115	108	92	100	103	99	105
1957	99	97	93	98	100	104	114	107	96	100	100	109	102
1958	105	106	114	109	103	96	90	90	92	96	96	90	98
1959	95	96	94	94	97	100	96	103	112	104	104	101	100
1960	130	121	121	125	109	98	106	110	117	118	120	121	115
1961	119	118	117	118	106	99	102	105	109	112	115	113	110
1962	125	134	141	127	120	101	98	106	116	116	120	125	117
1963	128	121	121	112	100	100	117	110	110	116	125	130	114
1964	135	133	127	121	108	114	110	116	122	136	141	145	124
1965	149	150	142	154	148	123	114	116	129	133	130	134	134
1966	149	158	142	150	133	127	154	162	152	160	157	145	148

1/ THE INDEX OF WHOLESALE VALUES presented in this table were computed from prices representing private and auction sales weighted according to the unloads of each fruit and vegetables for that month. Index numbers for the year were obtained by weighting the monthly data by the unloads for the respective months.

The following fruits and vegetables are included: Apples, blueberries, cantaloups, cherries, cranberries, grapefruit, grapes, honeydew melons, lemons, oranges, peaches, pears, plums and prunes, strawberries, watermelons, asparagus, snap beans, beets, broccoli, cabbage, carrots, cauliflower, celery, yellow corn, cucumbers, eggplants, escarole, lettuce, mushrooms, onions, peas, peppers, potatoes, radishes, spinach, sweetpotatoes and tomatoes.

END