



AgEcon SEARCH
RESEARCH IN AGRICULTURAL & APPLIED ECONOMICS

The World's Largest Open Access Agricultural & Applied Economics Digital Library

This document is discoverable and free to researchers across the globe due to the work of AgEcon Search.

Help ensure our sustainability.

Give to AgEcon Search

AgEcon Search
<http://ageconsearch.umn.edu>
aesearch@umn.edu

*Papers downloaded from **AgEcon Search** may be used for non-commercial purposes and personal study only. No other use, including posting to another Internet site, is permitted without permission from the copyright owner (not AgEcon Search), or as allowed under the provisions of Fair Use, U.S. Copyright Act, Title 17 U.S.C.*

SD 359 (1965)

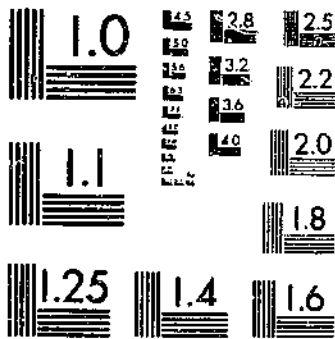
USDA STATISTICAL BULLETINS

VEDATA

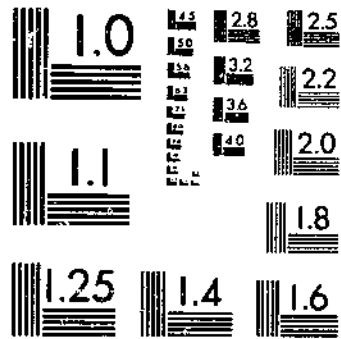
FRESH FRUIT AND VEGETABLE PRICES 1964

1-0-1

START



MICROCOPY RESOLUTION TEST CHART
NATIONAL BUREAU OF STANDARDS-1963-A



MICROCOPY RESOLUTION TEST CHART
NATIONAL BUREAU OF STANDARDS-1963-A

637.5
312.0-13
359

REFERENCE
DO NOT LOAN

FRESH FRUIT and VEGETABLE PRICES • 1964

DEPOSITORY

MAY 27 1965

Los Angeles Public Library



WHOLESALE
CHICAGO AND
NEW YORK CITY

AUCTION
CHICAGO AND
NEW YORK CITY

F.O.B.
LEADING
SHIPPING POINTS

STATISTICAL BULLETIN No 359
MAY 1965

UNITED STATES DEPARTMENT OF AGRICULTURE
Consumer and Marketing Service
Fruit and Vegetable Division
Washington, D. C.

PREFACE

Prices listed in this report represent sales in wholesale lots of certain fresh fruits and vegetables at New York City, Chicago and at important shipping points where market news field stations were located during 1964. The report also includes monthly average auction prices for important fresh fruits compiled by the Economic Research Service from information contained in the New York Daily Fruit Reporter and Chicago Daily Fruit and Vegetable Reporter.

Wholesale prices for private sales at New York City and Chicago are simple averages of representative prices for each Tuesday. In arriving at the Tuesday prices, local market reporters consider estimated volume of sales at different price levels, quality, condition, and other factors. These wholesale prices in most cases represent private sales in less than carlot quantities. Generally they represent sales made by the first seller on the wholesale market. In a few instances, prices representing sales in carlots or sales at auction are reported, but these are indicated in the body of the report. Prices are for stock of generally good merchantable quality and condition, unless otherwise stated. Grades are shown where quoted by grade.

Prices reported for important shipping points or areas are simple averages of the mid-points of the daily range throughout the year as reported by local market news offices. They refer to sales in straight or mixed carloads or truckloads, unless otherwise noted. An average shipping point price for a month generally is shown only when there were quotations for six or more days during that month.

"Sales f.o.b." refer to transactions in which the buyer assumes responsibility for the commodity at shipping point. "Delivered sales, shipping point basis", refer to transactions in which the seller assumes responsibility for delivery to the market. Prices for the latter group of transactions are adjusted to a shipping point basis by making appropriate deductions for transportation and protective services.

The report includes a table of estimated value per carlot of fresh fruits and vegetables for 1963 and 1964 by months, at New York City and Chicago (Table 4). These estimates are intended to indicate a comparative trend rather than an absolute value per car. They do not include prices for produce sold in other sections of the country, nor do they include commodities sold on these markets but not included in this price summary.

Major changes were made in 1960 in the loadings per carlot in connection with the transportation reports, compiled for fruits and vegetables to reflect current loading practices. These higher loading factors were used in computing the estimated value per carlot and are reflected in higher values per carlot. A summary of these changes is provided on page 4 of the reports on "Fresh Fruit and Vegetable Unloads in Eastern and in Western Cities for the Calendar Year 1960." (AMS 427-428)

Estimated value per carlot is computed by multiplying the monthly prices at New York City and Chicago for various commodities shown in this report by the number of packages per carlot for respective commodities. These computed carlot values are then weighted by the monthly unloads adjusted to carlot equivalents.

The indices of wholesale value per carlot (Table 5) were computed from the wholesale value information described in the preceding paragraphs.

Prepared by Market News Branch,
Fruit and Vegetable Division
Consumer and Marketing Service

CONTENTS

<u>Page</u>	<u>Page</u>		
Introduction	3	Table 2.--Continued	
Table 1.--Wholesale prices of specified fruits and vegetables at New York City and Chicago, each month by market, origin and description, 1964	5	<u>Deciduous Fruits</u>	
<u>Berries</u>		Apples	13
Blackberries	5	Apricots	14
Blueberries	5	Cherries	14
Cranberries	5	Grapes	14
Raspberries	5	Nectarines	14
Strawberries	5	Peaches	14
		Pears	15
		Pineapples	15
		Plums	15
		Prunes, Fresh	15
<u>Citrus Fruits</u>		Table 3.--Average prices of specified fruits and vegetables at leading shipping points, each month, by description of sale, 1964	16
Grapefruit	5	<u>Berries</u>	
Limes	5	Blueberries	16
Oranges	5	Raspberries	16
Tangelos	6	Strawberries	16
Tangerines	6	<u>Citrus Fruits</u>	
<u>Other Fruits</u>		Lemons	17
Apples	6	Oranges	17
Avocados	6	<u>Other Fruits</u>	
Peaches	6	Apples	17
Prunes, Fresh	7	Apricots	18
<u>Miscellaneous Melons</u>		Cherries	18
Cantaloups	7	Grapes	18
Honeydew Melons	7	Nectarines	19
Watermelons	8	Peaches	19
<u>Vegetables</u>		Pears	20
Asparagus	8	Plums	20
Beans, Lima	8	Prunes, Fresh	20
Beans, Snap	8	<u>Melons</u>	
Beets	8	Cantaloups	21
Broccoli	8	Honeydews	21
Brussels Sprouts	8	Miscellaneous Melons	21
Cabbage	9	Watermelons	21
Carrots	9	<u>Vegetables</u>	
Cauliflower	9	Asparagus	22
Celery	9	Beans, Lima	22
Corn, Sweet	9	Beans, Snap	22
Cucumbers	10	Beets	22
Eggplant	10	Cabbage	22
Endive-Chicory	10	Carrots	23
Escarole	10	Cauliflower	23
Kale	10	Celery	24
Lettuce	10	Corn, Sweet	24
Mushroom	10	Cucumbers	24
Onions, Dry	11	Eggplant	25
Peas, Green	11	Escarole	25
Peppers, Green	11	Lettuce	25
Potatoes	11	Onions, Dry	25
Radishes	11	Peppers, Green	26
Rhubarb	12	Potatoes	27
Spinach	12	Spinach	29
Sweetpotatoes	12	Sweetpotatoes	29
Tomatoes	12	Tomatoes	29
Table 2.--Auction prices of specified citrus and deciduous fruits in New York City and Chicago, each month, by market, origin and description, 1964	13	Table 4.--Computed wholesale values per carlot of domestic fresh fruits and vegetables, New York City and Chicago, by months, 1963-1964	32
<u>Citrus Fruits</u>		Table 5.--Index of wholesale value of fresh fruits and vegetables at New York City and Chicago, by months, 1945-1964	33
Grapefruit	13		
Lemons	13		
Oranges	13		
Tangelos	13		
Tangerines	13		

Table 1--Wholesale prices of specified fruits and vegetables at New York City and Chicago, each month by market, origin, and description, 1964 ^{1/}

BERRIES

Market, Origin and description	Jan.	Feb.	Mar.	Apr.	May	June	July	Aug.	Sept.	Oct.	Nov.	Dec.
	- - - Dollars Per Unit - - -											
<u>Blackberries</u>												
<u>New York:</u>												
N.J., Per Pint	-	-	-	-	-	.40	.37	.38	-	-	-	-
<u>Blueberries</u>												
<u>New York:</u>												
<u>Cultivated, Per Pint</u>												
N.C.,	-	-	-	-	.50	.33	-	-	-	-	-	-
N.J.,	-	-	-	-	-	.39	.28	.37	.42	-	-	-
<u>Chicago:</u>												
<u>Cultivated, Per Pint</u>												
Ill.,	-	-	-	-	-	.36	-	-	-	-	-	-
Mich.,	-	-	-	-	-	.42	.31	.29	.34	.35	-	-
<u>Cranberries</u>												
<u>New York:</u>												
<u>24-1-lb. Film Bags, Carton</u>												
Mass., Early varieties	-	-	-	-	-	-	-	-	5.00	5.00	5.00	-
Late Howe	-	-	-	-	-	-	-	-	-	-	5.22	5.25
<u>Chicago:</u>												
<u>24-1-lb. Film Bags, Carton</u>												
Mass., Early varieties	-	-	-	-	-	-	-	-	5.42	4.80	-	-
Late Howe	-	-	-	-	-	-	-	-	-	-	5.35	6.00
Wis., Searle	-	-	-	-	-	-	-	-	-	4.79	4.90	5.35
<u>Raspberries</u>												
<u>New York:</u>												
Calif., Reds, 1/2-pint	-	-	-	-	-	.58	.40	-	.50	.47	.52	-
<u>Strawberries</u>												
<u>New York:</u>												
<u>Pint - Various Varieties</u>												
Calif.,65	-	.40	.49	.40	.34	.40	.36	.38	.41	.47	-
Fla.,43	.42	.33	.35	-	-	-	-	-	-	-	.36
<u>Chicago:</u>												
<u>Pint - Various Varieties</u>												
Calif.,	-	-	-	.33	.34	.28	.34	.31	.32	.35	-	-
La.,	-	-	.38f	.30	.24	-	-	-	-	-	-	-
Mexico,	-	-	-	-	-	-	-	-	-	-	.48	.31

CITRUS FRUITS ^{2/}

Limes

<u>New York:</u>												
<u>10-lb. Flat</u>												
Fla., Persian, various sizes	2.78	2.25	7.38	3.69	3.94	1.24	1.32	1.44	1.70	1.26	1.60	2.51
<u>Chicago:</u>												
<u>10-lb. Flat</u>												
Fla., Persian, various sizes	2.15	3.30	6.17	4.58	3.76	1.42	1.22	1.58	1.86	1.60	2.00	2.38

Grapefruit

<u>Chicago:</u>												
<u>4/5-Bushel Crates & Cartons</u>												
<u>Various Varieties</u>												
Fla., Indian River Dist.,	-	-	-	-	-	-	-	-	-	-	3.42	3.40
Interior Dist.,	-	-	-	-	-	-	-	-	-	-	2.93	2.45

Oranges

<u>Chicago:</u>												
<u>4/5-Bushel Crates & Cartons</u>												
Fla., Various varieties	-	-	-	-	-	-	-	-	-	-	3.32	2.99

^{1/} Prices shown are simple average of representative prices for Tuesday of each week during the month.

^{2/} For auction prices see Table 2.

f - Few

Table 1--Continued

CITRUS FRUITS 4/--CONTINUED

Market, Origin and description	Jan.	Feb.	Mar.	Apr.	May	June	July	Aug.	Sept.	Oct.	Nov.	Dec.
	Dollars Per Unit											
<u>Tangelos</u>												
<u>Chicago:</u>												
Fla., 4/5-bu. crts. & ctns.	-	-	-	-	-	-	-	-	-	-	5.82	4.83
<u>Tangerines</u>												
<u>Chicago:</u>												
Fla., 4/5-bu. crts. & ctns.	-	-	-	-	-	-	-	-	-	-	5.70	4.09
<u>OTHER FRUITS</u>												
<u>Apples 2/</u>												
<u>New York:</u>												
<u>U.S. No. 1 or better, 2½-in. up, unless stated</u>												
<u>Eastern Box & 1-1/8 Bushel Carton</u>												
N.Y., Hud.Vly., Cortland	2.62	2.31	-	-	-	-	-	-	1.85	2.00	2.31	2.25
Golden Delicious	-	-	-	-	-	-	-	-	-	-	3.75	3.77
Red Delicious	3.08	2.80	-	-	-	-	-	-	3.45	3.25	3.48	3.70
<u>Carton Cell Pack, 100-120s, unless stated</u>												
N.Y., Hud.Vly., McIntosh	3.77	3.72	-	-	-	-	-	-	3.40	3.50	3.66	3.63
New England, McIntosh, USFcy	4.17	4.00	-	-	-	-	-	-	3.50	3.88	4.24	4.10
<u>Carton Cell Pack, USFcy, 100-120s, C.A. Storage</u>												
N.Y., Hud.Vly., McIntosh	-	4.25	4.26	5.25	5.07	5.74	-	-	-	-	-	-
New England, McIntosh	4.50	4.56	4.77	5.18	6.44	6.37	-	-	-	-	-	-
<u>Chicago:</u>												
<u>U.S. No. 1 or better, 2½-in. up, unless stated</u>												
<u>Bushel Basket</u>												
Mich., Jonathan, 2½-in. up	-	-	-	-	-	-	-	-	2.35	2.40	-	-
McIntosh	-	-	-	-	-	-	-	-	-	2.00	-	-
Red Delicious	-	-	-	-	-	-	-	-	3.00	2.92	-	-
<u>Carton, Film Bags, 2½-in. up, 10-4-lb.</u>												
Mich., Jonathan	2.94	2.95	-	-	-	-	-	-	-	2.24	2.45	2.62
McIntosh	2.81	-	-	-	-	-	-	-	2.44	2.10	2.60	2.72
Red Delicious	-	-	-	-	-	-	-	-	-	3.04	3.30	3.17
<u>Cartons, USFcy, Film Bags, 2½-in. up, C.A. Storage</u>												
Mich., Jonathan, 12-3-lb.	-	3.35	3.22	3.39	3.25	-	-	-	-	-	-	-
Jonathan, 10-4-lb.	3.75	3.82	-	-	-	-	-	-	-	-	-	-
McIntosh, 12-3-lb.	-	-	3.30	3.30	3.25	-	-	-	-	-	-	-
<u>Avocados</u>												
<u>New York:</u>												
<u>Various Varieties</u>												
Calif., Flats (approx. 13-lbs.)	3.22	2.86	3.42	3.35	3.71	3.78	3.15	3.15	-	-	-	-
Fla., Flats (approx. 13-lbs.)	2.10	2.18	-	-	-	4.00	3.60	3.42	3.04	2.82	2.29	2.31
<u>Chicago:</u>												
<u>Various Varieties</u>												
Calif., Flats (approx. 13-lbs.)	3.18	2.81	3.18	3.51	3.70	3.78	3.84	4.45	4.31	4.85	5.25	-
Fla., Flats (approx. 13-lbs.)	1.96	1.90	-	-	-	-	-	3.25	3.19	3.00	2.25	2.33
<u>Peaches 2/</u>												
<u>New York:</u>												
<u>U.S. No. 1 or better</u>												
<u>2-in. up, unless stated</u>												
<u>1/2-Bushel Basket or Crate</u>												
Ga., Coronet	-	-	-	-	-	5.50	-	-	-	-	-	-
Dixired	-	-	-	-	-	4.88	-	-	-	-	-	-
Keystone	-	-	-	-	-	-	4.50	-	-	-	-	-
Southland	-	-	-	-	-	-	4.12	-	-	-	-	-
S.C., Coronet	-	-	-	-	-	5.92	-	-	-	-	-	-
Dixired	-	-	-	-	-	5.12	-	-	-	-	-	-
Keystone	-	-	-	-	-	6.00	4.50	-	-	-	-	-
Southland	-	-	-	-	-	7.00	4.00	-	-	-	-	-
<u>3/4-Bushel Basket or Crate</u>												
Ga., Keystone	-	-	-	-	-	10.75	-	-	-	-	-	-
N.J., No grade mark	-	-	-	-	-	-	-	-	-	-	-	-
Redhaven	-	-	-	-	-	-	4.25	3.92	-	-	-	-
Rio Oso Gem, 2½-in. up	-	-	-	-	-	-	-	-	5.50	-	-	-

2/ For auction prices see Table 2.

Table 1--Continued

OTHER FRUITS--CONTINUED

Market, Origin and description	Jan.	Feb.	Mar.	Apr.	May	June	July	Aug.	Sept.	Oct.	Nov.	Dec.
	Dollars Per Unit											
<u>New York: Cont'd</u>												
<u>U.S. No. 1 or better</u>												
<u>2-in. up, unless stated</u>												
<u>3/4-Bushel Basket or Crate</u>												
<u>N.J., No grade mark</u>												
Sunhigh	-	-	-	-	-	-	-	3.46	3.00	-	-	-
Sunhigh, 2 1/4-in. up	-	-	-	-	-	-	-	3.75	3.50	-	-	-
<u>Pa.,</u>												
Redhaven	-	-	-	-	-	-	-	3.80	-	-	-	-
Rio Oso Gem, 2 1/4-in. up	-	-	-	-	-	-	-	-	4.00	-	-	-
Sunhigh	-	-	-	-	-	-	-	-	3.00	-	-	-
Sunhigh, 2 1/4-in. up	-	-	-	-	-	-	-	3.75	-	-	-	-
<u>Chicago:</u>												
<u>U.S. No. 1 or better</u>												
<u>2-in. up, unless stated</u>												
<u>1/2-Bushel Basket or Crate</u>												
<u>Ga.,</u>												
Coronet	-	-	-	-	-	4.85	-	-	-	-	-	-
Southland	-	-	-	-	-	-	3.75	-	-	-	-	-
<u>S.C.,</u>												
Southland	-	-	-	-	-	-	4.25	-	-	-	-	-
<u>3/4-Bushel Basket or Crate</u>												
<u>Mich.,</u>												
Redhaven,	-	-	-	-	-	-	-	2.84	-	-	-	-
<u>S.C.,</u>												
Elberta, 2 1/4-in. up	-	-	-	-	-	-	3.75	3.08	-	-	-	-
<u>Prunes, Fresh 2/</u>												
<u>New York:</u>												
<u>1/2-Bushel Basket or Carton</u>												
Northwest, Italian type	-	-	-	-	-	-	-	-	3.35	-	-	-
<u>Chicago:</u>												
<u>1/2-Bushel Basket or Carton</u>												
Northwest, Italian type	-	-	-	-	-	-	-	2.99	2.97	2.80	-	-

MELONS

Cantaloups

<u>New York:</u>												
<u>Jumbo Crate, 36s</u>												
Ariz.,	-	-	-	-	-	9.67	7.50	-	-	-	-	-
Calif.,	-	-	-	-	-	9.50	7.94	5.88	7.50	10.06	8.25	-
Mexico,	-	24.00	16.38	14.62	15.31	11.90	-	-	-	-	-	-
<u>Chicago:</u>												
<u>Jumbo Crate, 36s</u>												
Ariz.,	-	-	-	-	-	9.44	7.30	-	-	-	-	-
Calif.,	-	-	-	-	-	9.32	7.08	5.48	6.45	6.50	-	-
Texas,	-	-	-	-	-	9.50	-	-	-	-	-	-
Mexico,	-	-	11.25	13.34	14.04	11.00	-	-	-	-	-	-

Honeydews

<u>New York:</u>												
<u>Standard Flat Crate</u>												
<u>Unless stated</u>												
Calif., 9-12s	-	-	-	-	-	-	5.12	4.10	4.10	-	-	-
Texas, 9-12s	-	-	-	-	-	-	5.28	6.25	-	-	-	-
Carton, 2/3 Jumbo crt., 5-6s.	-	-	-	-	4.50	3.12	-	-	-	-	-	-
Mexico, 12s	-	-	-	4.75	6.42	5.50	-	-	-	-	-	-
<u>Chicago:</u>												
<u>Standard Flat Crate</u>												
Calif., 9-12s	-	-	-	-	-	-	4.92	3.54	3.59	3.61	-	-
Texas, 9-12s	-	-	-	-	-	-	4.95	5.62	-	-	-	-
Jumbo crt., 5-8s.	-	-	-	-	-	-	4.69	-	-	-	-	-

2/ For auction prices see Table 2.

Table 1.--Continued

MELONS--CONTINUED

Market, Origin and description	Jan.	Feb.	Mar.	Apr.	May	June	July	Aug.	Sept.	Oct.	Nov.	Dec.
	Dollars Per Unit											
<u>Watermelons</u>												
<u>New York:</u>												
<u>Charleston Grays, Per Pound</u>												
Various States, 20-30-lb. av., mostly 24-28-lb. av.	-	-	-	.0725	.0544	.0467	.0390	.0266	.0363	-	-	-
Mexico, Peacock, cartons	-	.1500	.1350	.1225	-	-	-	-	-	-	-	-
<u>Chicago:</u>												
<u>Charleston Grays, Per Pound</u>												
Various States, 20-30-lb. av., mostly 24-28-lb. av.	-	-	-	.0750	.0544	.0436	.0319	.0288	-	-	-	-
Mexico, Peacock, 12-15-lb. av.	-	.1412	.1240	.0994	.0800	-	-	-	-	-	-	-
<u>VEGETABLES</u>												
<u>New York:</u>												
<u>Pyramid Crate</u>												
Calif., Loose, large	-	12.12	15.05	6.06	8.25	-	-	-	-	-	-	-
N.J., Bchd., large	-	-	-	5.80	5.06	5.00	-	-	-	-	-	-
<u>Chicago:</u>												
<u>Pyramid crate</u>												
Calif., 12-bchs., select	-	-	13.75	6.60	-	-	-	-	-	-	-	-
12-bchs., extra fancy	-	-	13.00	6.42	-	-	-	-	-	-	-	-
Loose, large	-	-	10.50	6.59	6.00	-	-	-	-	-	-	-
Ill., Crate, 12-1-lb. bch.	-	-	-	-	2.28	2.91	-	-	-	-	-	-
<u>Beans, Lima</u>												
<u>New York:</u>												
<u>Bushel Hamper</u>												
Various Eastern States,	-	-	-	-	-	-	-	4.12	3.36	3.50	-	-
<u>Chicago:</u>												
Mich., 12-qt. basket	-	-	-	-	-	-	-	2.25	1.75	-	-	-
<u>Beans, Snap-Green</u>												
<u>New York:</u>												
<u>Bushel Hamper</u>												
Fla., Harvester	6.81	6.44	5.85	3.78	5.75	-	-	-	-	8.00	5.35	5.30
N.J., Harvester	-	-	-	-	-	-	3.50	2.91	3.15	4.25	-	-
Va., Harvester	-	-	-	-	-	4.12	2.50fq	-	4.00	5.42	-	-
<u>Chicago:</u>												
<u>Bushel Hamper</u>												
Fla., Harvester	7.06	6.44	5.65	3.75	5.25	-	-	-	-	6.60	4.25	5.50
Mich., Various varieties	-	-	-	-	-	-	3.40	4.25	3.35	-	-	-
<u>Beets</u>												
<u>New York:</u>												
<u>Bunched</u>												
N.J., Per bunch	-	-	-	-	-	.0862	.0600	.0725	.1108	.0875	.1050	.1000
Bushel basket, topped	1.68	1.66	1.50	-	-	-	-	-	-	-	-	-
Texas, 1-3/4 bushel crate, 3-doz. ..	3.70	3.66	3.45	2.97	3.00	-	-	-	-	-	4.50	3.50
<u>Chicago:</u>												
<u>Bunched</u>												
Ill., Crates, 18-bchs.	-	-	-	-	-	1.58	1.28	1.48	1.66	1.50	2.25	-
Texas, Crates, 3-doz.	2.94	2.89	2.99	2.90	2.60	-	-	-	-	-	3.15	2.95
<u>Broccoli</u>												
<u>New York:</u>												
Calif., 1/2-crate, 14-bchs.	3.62	3.19	3.90	3.06	3.22	3.90	3.67	4.00	4.44	3.44	3.14	3.68
<u>Chicago:</u>												
Calif., 1/2-crate, 14-bchs.	3.14	3.06	3.33	2.72	2.96	2.90	3.12	3.26	3.70	2.99	3.09	3.32
<u>Brussels Sprouts</u>												
<u>New York:</u>												
Calif., Repacks locally, 10-oz. cup. .	.20	.20	.24	-	-	-	-	-	-	.18	.18	.20
N.Y., L.I., 10-oz. cup	-	-	-	-	-	-	-	-	-	-	.17	.17
<u>Chicago:</u>												
Calif., 25-lb. drums	3.71	3.69	-	-	-	-	-	-	4.58	3.41	3.44	3.98

fq - Fair quality.

Table 1.--Continued

VEGETABLES--CONTINUED

Market, Origin and description	Jan.	Feb.	Mar.	Apr.	May	June	July	Aug.	Sept.	Oct.	Nov.	Dec.
	Dollars Per Unit											
<u>Cabbage</u>												
<u>New York:</u>												
<u>Danish Type</u>												
N.Y., (Other) 50-lb. sack	1.44	1.34	1.56	2.12	-	-	-	-	-	1.28	1.87	2.08
<u>Domestic Round Type</u>												
<u>1-3/4 Bushel Crate, unless stated</u>												
Fla.,	2.81	2.74	2.55	2.26	2.37	3.00f	-	-	-	-	-	3.44
N.C.,	-	-	-	-	3.25	3.15	-	-	-	-	2.50	2.71
N.J., Various used crates (approx. 50-lbs.)	-	-	-	-	-	2.06	1.54	2.14	1.80	1.40	1.82	2.44
S.C.,	-	-	-	-	2.69	-	-	-	-	-	2.62	2.44
<u>Chicago:</u>												
<u>Danish Type</u>												
Wis., 50-lb. sack	1.54	1.34	1.57	1.75	-	-	-	-	1.85	1.70	1.85	2.70
<u>Domestic Round Type</u>												
<u>1-3/4-Bushel Crate, unless stated</u>												
Ill., Various used crates (approx. 50-lbs.)	-	-	-	-	-	1.95	1.44	2.41	2.47	2.54	2.88	-
Texas,	2.92	2.34	2.32	2.35	2.10	-	-	-	-	-	3.05	3.05
<u>Carrots</u>												
<u>New York:</u>												
<u>Topped, Washed, 48-1-lb. Film Bags</u>												
Calif., Crate	5.20	5.41	5.23	4.84	4.22	4.69	4.38	4.96	5.30	5.41	5.96	5.33
Texas, Mesh, master container	-	-	2.75	2.75	2.95	4.02	3.00	-	-	-	3.12	3.62
Canada, Film, master container	3.31	2.92	-	-	-	-	-	3.50	3.00	3.02	3.11	3.54
<u>Chicago:</u>												
<u>Topped, Washed, 48-1-lb. Film Bags</u>												
Calif., Crate	4.35	-	4.50	3.62	4.38	4.35	4.28	4.84	5.12	5.12	5.50	5.22
Texas, Mesh, master container	3.60	2.96	2.63	2.59	2.92	3.78	3.22	-	-	3.40	3.20	3.83
<u>Cauliflower</u>												
<u>New York:</u>												
Calif., Cartons, film wrpd., 12s	3.78	4.19	4.81	3.56	4.54	3.84	4.00	3.88	4.00	-	3.25	4.25
N.Y., (Catskill Sect.) Catskill type crts. & ctns., 12s	-	-	-	-	-	-	-	3.25	3.24	-	-	-
N.Y., L.I., Long Island type crates, 12s	-	-	-	-	-	-	-	-	2.91	2.88	3.16	2.75
Texas, Cartons, film wrpd., 12s	-	-	4.50	-	-	-	-	-	-	-	-	-
<u>Chicago:</u>												
Calif., Cartons, film wrpd., 12s	3.15	3.62	3.58	3.44	3.71	3.39	3.32	3.38	3.67	3.05	3.08	3.57
Mich., Long Island type crt., 12s ..	-	-	-	-	-	-	-	-	2.00	2.25	1.95	-
Texas, Long Island type crt., 12s ..	2.50	2.65	-	-	-	-	-	-	-	-	-	3.08
<u>Celery</u>												
<u>New York:</u>												
<u>Pascal Type, 16-inch Crate</u>												
Calif., 2-3-dozen	6.04	6.39	6.49	4.66	4.61	5.38	5.19	5.35	5.60	4.75	4.94	4.78
Fla., 2-4-dozen	4.19	5.31	5.45	3.52	3.38	4.28	-	-	-	-	4.20	3.52
N.Y., Org. Co., 2-3-dozen	-	-	-	-	-	-	3.69	2.69	3.44	3.12	-	-
<u>Chicago:</u>												
<u>Pascal Type, 16-inch Crate</u>												
Calif., 2-3-dozen	5.22	6.02	6.11	4.19	4.45	5.05	4.38	4.54	4.96	4.28	4.54	3.94
Fla., 2-4-dozen	4.29	4.97	5.47	3.46	3.49	4.08	-	-	-	-	3.85	3.69
Mich., 2-4-dozen	-	-	-	-	-	-	3.29	3.06	3.53	2.84	-	-
<u>Corn, Sweet</u>												
<u>New York:</u>												
<u>5-Dozen, Crate - Yellow, unless stated</u>												
Fla.,	4.51	4.98	5.36	4.94	3.45	3.63	3.15	-	-	5.65	4.54	3.53
N.Y., Crts., approx. 4 1/2 dozen ...	-	-	-	-	-	-	1.62	2.06	1.61	-	-	-
<u>Chicago:</u>												
<u>5-Dozen, Crate - Yellow</u>												
Fla.,	4.44	4.70	5.18	4.78	3.52	3.54	3.00	-	-	5.50	4.45	3.12
Ill.,	-	-	-	-	-	-	1.38	1.44	1.58	-	-	-

f - Few

Table 1.--Continued

VEGETABLES--CONTINUED

Market, Origin and description	Jan.	Feb.	Mar.	Apr.	May	June	July	Aug.	Sept.	Oct.	Nov.	Dec.
	Dollars Per Unit											
<u>Cucumbers</u>												
<u>New York:</u>												
<u>Bushel Basket</u>												
Fla.,	9.08	-	9.92	4.75	6.00	4.75	-	-	-	9.06	5.62	4.65
N.C.,	-	-	-	-	-	3.84	-	-	-	-	-	-
N.Y., L.I.,	-	-	-	-	-	-	1.75	3.25	2.84	-	-	-
S.C.,	-	-	-	-	-	4.08	-	-	5.25	7.34	6.50	-
British West Indies	10.00	14.00	12.40	-	-	-	-	-	-	-	-	5.25
<u>Chicago:</u>												
<u>Bushel Basket</u>												
Fla.,	7.50	-	6.75	4.64	5.12	4.04	-	-	-	9.17	4.75	4.30
Ill.,	-	-	-	-	-	3.90	3.50	-	3.80	5.50	-	-
Mexico,	9.45	13.64	12.38	-	-	-	-	-	-	-	-	-
<u>Eggplant</u>												
<u>New York:</u>												
<u>Bushel Basket</u>												
Fla.,	4.06	6.12	5.44	3.00	4.12	4.08	3.38fq	-	-	7.00	4.87	2.40
N.J.,	-	-	-	-	-	-	4.17	2.26	1.64	-	-	-
<u>Chicago:</u>												
<u>Bushel Basket</u>												
Fla.,	3.44	5.00	4.25	2.92	3.00	4.25	2.68	-	-	-	4.72	2.40
Ill.,	-	-	-	-	-	-	3.12	2.47	1.43	1.42	-	-
<u>Endive-Chicory</u>												
<u>New York:</u>												
<u>1-1/9 Bushel Crate</u>												
Fla.,	3.74	4.15	2.54	2.02	3.38	3.75	-	-	-	-	2.54	1.77
N.J.,	-	-	-	-	-	1.28	1.66	1.52	1.18	1.47	2.25	-
<u>Escarole</u>												
<u>New York:</u>												
<u>1-1/9 Bushel Crate</u>												
Fla.,	3.56	3.72	2.47	1.85	2.75	3.15	-	-	-	-	2.76	1.74
N.J.,	-	-	-	-	-	1.29	1.29	1.40	1.18	1.65	2.25	-
<u>Kale</u>												
<u>New York:</u>												
N.J., Various used crates	-	-	-	-	.90	1.08	1.08	1.19	1.31	1.12	1.10	1.19
Va., Bushel basket	1.40	1.39	1.32	1.35	-	-	-	-	-	-	-	1.68
<u>Lettuce</u>												
<u>New York:</u>												
<u>Iceberg Type, 24 Heads, Carton</u>												
Ariz.,	6.01	4.89	3.94	2.70	3.02	3.01	-	-	-	-	4.32	4.36
Calif.,	6.01	4.89	4.43	2.70	3.02	3.16	3.79	3.79	4.22	3.94	3.62	4.02
<u>Big Boston Type, 24 Heads</u>												
<u>Eastern Boston Crate</u>												
Fla.,	5.08	5.17	3.70	3.50	-	-	-	-	-	-	3.15	2.88
N.J.,	-	-	-	-	2.35	1.08	-	-	2.50f	2.31	2.32	-
<u>Romaine Type</u>												
Fla., 1-1/9 bushel crate	2.55	-	3.12	2.17	-	-	-	-	-	-	2.79	2.44
N.J., 1-1/9 bushel crate	-	-	-	-	2.15	.86	.80	1.42	1.19	1.78	2.17	-
<u>Chicago:</u>												
<u>Iceberg Type, 24 Heads, Carton</u>												
Ariz.,	5.58	3.95	3.44	2.40	2.52	2.25	-	-	-	2.88	3.79	2.67
Calif.,	5.56	4.15	3.68	2.45	2.62	2.48	2.88	3.06	3.43	3.01	3.78	3.21
<u>Mushrooms</u>												
<u>New York:</u>												
<u>Extra Fancy and Special</u>												
Pa., 4-quart basket	1.28	1.35	1.43	1.31	1.48	1.62	1.86	1.92	1.60	1.48	1.50	1.43
<u>Chicago:</u>												
Ill., 1-pound carton68	.68	.68	.68	.67	.65	.65	.72	.75	.72	.72	.71

fq - Fair quality.

f - Few

Table 1.--Continued

VEGETABLES--CONTINUED

Market, Origin and description	Jan.	Feb.	Mar.	Apr.	May	June	July	Aug.	Sept.	Oct.	Nov.	Dec.
	Dollars Per Unit											
<u>Onions, Dry</u>												
<u>New York:</u>												
<u>50-Pound Sack</u>												
Ida.-Ore., Yellow Spanish type, lge.	3.26	3.67	4.28	3.84	-	-	-	-	2.72	3.04	3.18	3.57
Mich., Yellow Globe type, med.	2.39	2.29	2.34 ^f	-	-	-	-	-	-	-	2.25 ^f	2.25 ^f
N.Y. West Sect., Yellow Globe, med.	2.18	1.92	1.84	1.48	1.28	1.20	-	1.57	1.90	1.88	1.97	1.89
Yellow Globe, lge.	-	-	-	-	-	-	-	2.02	2.21	-	2.38	2.61
Texas, Yellow Granex, med.	-	-	-	2.14	2.21	2.39	2.35	-	-	-	-	-
Yellow Granex, lge.	-	-	-	2.00	1.81	2.00	-	-	-	-	-	-
<u>Chicago:</u>												
Idaho, Yellow Spanish, lge.	2.86	3.41	4.02	3.25	-	-	-	-	2.42	2.70	2.82	3.20
Midwestern, Yellow Globe, med.	1.92	1.75	1.87	1.54	-	-	1.75	1.75	1.95	2.16	2.12	2.06
Texas, Yellow Granex, med.	-	-	2.50	2.05	1.90	2.10	-	-	-	-	-	-
Yellow Granex, lge.	-	-	-	1.65	1.58	1.78	-	-	-	-	-	-
<u>Peas, Green</u>												
<u>New York:</u>												
<u>Bushel Basket</u>												
Calif.,	-	-	-	3.75	4.30	4.68	5.15	-	6.75	6.75	7.45	-
Colo.,	-	-	-	-	-	-	5.25	4.80	-	-	-	-
Mexico,	5.40	4.60	4.91	3.91	-	-	-	-	-	-	-	-
<u>Chicago:</u>												
<u>Bushel Basket</u>												
Calif.,	-	-	-	4.00	3.95	4.38	4.67	-	5.75	5.84	6.25	-
Colo.,	-	-	-	-	-	-	4.75	4.88	-	-	-	-
Mexico,	5.88	5.34	5.24	4.45	-	-	-	-	-	-	-	-
<u>Pepper, Green</u>												
<u>New York:</u>												
<u>Bushel Basket, Calif. Wonder Type</u>												
Fla., Large	4.66	4.38	7.55	5.94	5.75	5.10	-	-	-	-	5.25	3.71
N.J., Large	-	-	-	-	-	-	4.75	2.76	2.07	2.25	-	-
<u>Chicago:</u>												
<u>Bushel Basket, Calif. Wonder Type</u>												
Fla., Large	4.94	4.62	6.41	5.81	5.34	4.67	-	-	-	-	-	3.91
Texas, Bushel carton, med.-lge.	-	-	-	-	-	-	-	-	-	5.00	4.56	3.10
<u>Potatoes</u>												
<u>New York:</u>												
<u>U.S. No. 1, Size A, 50-lb. Sack</u>												
<u>Washed, unless stated</u>												
Calif., Long White	-	-	3.25	-	3.60	3.81	3.78	3.58	-	-	-	-
Fla., Round Red	-	3.62 ^f	3.50	3.69	4.07	-	-	-	-	-	-	-
Sebagoes	-	-	3.25	3.00	3.50	-	-	-	-	-	-	-
Idaho, Russet Burbank $\frac{3}{4}$	2.44	2.59	2.85	3.01	3.42	4.07	-	3.38	-	3.50	3.70	4.34
Maine, Katahdin type, unwashed $\frac{3}{4}$	1.39	1.40	1.48	1.66	2.15	2.98	2.84	-	-	-	1.87	2.28
N.Y., L.L., Various Round Whites, wshd. & unwshd. mostly wshd.	1.34	1.37	1.42	1.60	-	-	-	2.11	1.74	1.72	1.94	2.29
<u>Chicago:</u>												
<u>Street Sales</u>												
<u>U.S. No. 1, Size A, 100-lb. Sack, Washed</u>												
Calif., Long White	-	-	-	-	5.97	6.70	6.21	5.48	4.75 ^f	-	-	-
Idaho, Russet Burbank	4.32	4.41	4.92	5.60	6.48	7.34	-	-	-	6.05	6.84	8.17
Minn.-N. Dak. (Red Riv. Vly.) Round Reds	2.48	2.50	2.89	3.59	4.60	5.62	-	-	3.80	4.42	4.69	5.77
Wis., Round Reds	-	-	-	-	-	-	-	3.54	3.45	4.10	-	-
Russet Burbank	3.05	3.06	3.41	4.10	4.25	-	-	-	4.12	4.82	5.26	6.41
<u>U.S. No. 1, Size A, 50-lb. Sack, Washed</u>												
Fla., Round Reds, Size A	-	3.45	3.22	3.35	3.58	-	-	-	-	-	-	-
Round Reds, Size B	-	3.75	3.27	3.79	4.25	-	-	-	-	-	-	-
<u>Radishes</u>												
<u>New York:</u>												
<u>Baskets</u>												
Fla., Red, 30s, 6-oz. film bags, tpd.	1.75	1.51	1.00	1.25	1.94	-	-	-	-	2.14	1.67	1.12
N.J., Per bunch	-	-	-	-	.0588	.0555	.0550	.0650	.0500	.0612	.0667	-
<u>Chicago:</u>												
<u>Baskets</u>												
Fla., Red, 30s, 6-oz. film bags, tpd.	1.60	1.52	1.01	1.19	1.18	1.35	-	-	-	1.92	1.51	1.21
Ind., Red, 30s, 8-oz. film bags, tpd.	-	-	-	-	-	1.82	1.62	1.66	1.21	2.04	-	-

 $\frac{3}{4}$ 2-inch minimum.

f - Few

Table 1.--Continued

VEGETABLES--CONTINUED

Market, Origin and description	Jan.	Feb.	Mar.	Apr.	May	June	July	Aug.	Sept.	Oct.	Nov.	Dec.
	- - - Dollars Per Unit - - -											
<u>Rhubarb</u>												
<u>New York:</u>												
<u>5-Pound Carton</u>												
Mich., Extra Fancy, Special long ...	-	1.05	.92	1.16	1.10	-	-	-	-	-	-	-
N.J., Per bunch	-	-	-	-	.0875	.0545	-	-	-	-	-	-
<u>Spinach</u>												
<u>New York:</u>												
<u>Savoy Type</u>												
<u>Bushel Basket and Crate</u>												
Colo.,	-	-	-	-	-	-	3.42	3.78	3.58	3.38	-	-
N.J.,	-	-	-	1.19	.86	1.67	1.64	2.25	-	1.59	1.50	-
Texas,	2.14	2.19	2.02	-	-	-	-	-	-	-	-	2.41
<u>Chicago:</u>												
<u>Bushel Basket</u>												
Ill., Flat type	-	-	-	1.55	1.50	1.86	2.50	-	-	2.50	2.04	-
Texas, Savoy type	2.35	-	-	-	-	-	-	-	-	-	-	2.30
<u>Sweetpotatoes</u>												
<u>New York:</u>												
<u>Bushel Basket</u>												
N.C., Porto Rico type	4.75	4.90	5.65	5.81	6.30	7.00	-	4.50	4.28	4.34	4.82	5.49
N.J., Orange Jersey type	3.41	3.56	3.78	4.51	5.19	6.45	-	-	-	3.85	4.29	4.19
<u>Chicago:</u>												
<u>50-Pound Crate</u>												
La., Porto Rico type, cured	5.05	4.98	5.66	6.20	6.60	-	-	-	-	-	-	5.40
Porto Rico type, uncured	-	-	-	-	-	-	6.64	4.32	3.95	4.18	4.46	-
<u>New York:</u>												
<u>Street Sales</u>												
Fla., 8-lb. flat ctn., vine ripe, lge.	2.08	2.42	2.45	2.39	2.00	-	-	-	-	-	-	1.75
N.J., 12-qt. basket, med.	-	-	-	-	-	-	2.12	1.62	-	-	-	-
Ohio, 8-lb. bkt., greenhouse, U.S. No. 1, med.	-	-	3.75	3.12	2.70	-	3.00	-	-	2.65	2.59	2.54
<u>Chicago:</u>												
<u>Green, Ripes and Turning</u>												
Fla., 6x6 & lgr., 40-lb. ctn. ^{4/} ..	6.62	-	7.00	7.00	5.69	7.22	-	-	-	-	-	5.00
8-lb. ctn., vine ripe, lge ..	2.06	1.99	2.29	1.96	1.62	2.00	-	-	-	-	-	-
Ill., 8-qt. bkt., vine-ripe, med.-lge.	-	-	-	-	-	-	2.00	1.15	1.25	-	-	-
Midwestern, 8-lb. ctn., greenhouse, med.-lge.	2.25	-	-	2.32	2.26	2.17	2.30	-	-	2.32	2.41	2.16
Texas, 6x6 & lgr., 40-lb. ctn., ^{4/} ..	-	-	-	-	-	5.50	-	-	-	-	-	-

^{4/} 85% or more U.S. No. 1 quality.

Table 2.--Auction prices of specified citrus and deciduous fruits in New York City and Chicago, each month, by market, origin, and description, 1964. Weighted average, all grades and sizes ^{1/}

Market, Origin and description	Jan.	Feb.	Mar.	Apr.	May	June	July	Aug.	Sept.	Oct.	Nov.	Dec.
	Dollars Per Unit											
CITRUS FRUITS												
Grapefruit												
New York:												
<u>Various Varieties</u>												
Calif., 1/2-box, carton	-	-	-	-	3.12	3.92	3.71	4.44	5.03	-	-	-
Fla., 4/5-bu. box or carton, rail-truck ^{2/}	2.94	2.85	2.83	3.28	3.87	2.41	2.04	-	6.20	3.95	3.00	2.81
Chicago:												
<u>Various Varieties</u>												
Calif., 1/2-box, carton	-	-	-	-	3.31	3.58	3.74	3.66	5.02	-	-	-
Fla., 4/5-bu. box or carton, rail-truck ^{2/}	3.33	3.13	3.12	3.44	3.97	4.13	-	-	5.49	3.84	2.89	3.19
Lemons												
New York:												
Calif., 1/2-box, carton	3.65	3.82	3.80	3.48	3.53	3.31	3.80	3.36	4.54	4.03	4.54	4.35
Chicago:												
Calif., 1/2-box, carton	3.68	3.99	3.93	3.72	3.32	3.06	3.64	3.52	4.18	4.76	4.46	4.84
Oranges												
New York:												
<u>Various Varieties, unless stated</u>												
Calif., Navel, 1/2-box, carton	3.36	3.68	4.47	4.65	4.26	-	-	-	-	-	5.86	3.88
Valencia, 1/2-box, carton ..	-	-	3.15	4.01	4.21	4.10	4.99	5.36	5.41	5.70	6.05	3.85
Fla., 4/5-bu. box or carton, rail-truck ^{2/}	4.05	3.99	3.79	3.75	3.97	4.39	5.47	5.51	-	3.69	3.40	3.16
Temple, 4/5-bu. box or carton, rail-truck ^{2/}	3.85	3.92	4.62	4.30	3.24	-	-	-	-	-	-	3.77
Chicago:												
<u>Various Varieties, unless stated</u>												
Calif., Navel, 1/2-box, carton	3.34	3.49	3.94	4.11	2.67	-	-	-	-	-	4.48	3.84
Valencia, 1/2-box, carton ..	-	-	-	3.81	3.52	3.73	4.66	5.02	5.28	5.42	6.47	4.80
Fla., 4/5-bu. box or carton, rail-truck ^{2/}	3.70	3.88	-	-	-	-	-	-	-	4.26	2.83	2.54
Temple, 4/5-bu. box or carton, rail-truck ^{2/}	2.94	4.31	-	-	-	-	-	-	-	-	-	4.00
Tangelos												
New York:												
Fla., 4/5-bu. box or carton, rail-truck ^{2/}	-	-	-	-	-	-	-	-	-	5.22	4.54	3.42
Tangerines												
New York:												
Fla., 4/5-bu. box or carton, rail-truck ^{2/}	-	-	-	-	-	-	-	-	-	8.02	4.92	3.59
DECIDUOUS FRUITS												
Apples												
New York:												
<u>Boxes, All Grades and Sizes</u>												
Wash., Delicious ^{3/}	4.15	4.13	4.78	5.76	6.63	7.34	5.25	-	5.46	5.09	5.09	5.30
Golden Delicious	3.80	3.71	4.27	4.67	5.27	5.85	-	-	5.43	4.18	4.18	3.86
Winesap	-	-	4.24	4.54	4.92	4.64	5.11	5.65	-	-	-	-
Chicago:												
<u>Boxes, All Grades and Sizes</u>												
Wash., Delicious ^{3/}	3.71	3.63	4.35	5.59	6.34	6.35	-	-	5.60	4.30	4.85	5.18
Golden Delicious	3.65	3.44	3.42	6.55	5.41	8.87	-	-	6.03	6.12	5.47	5.75
Winesap	4.08	4.14	4.39	4.41	4.64	4.80	4.61	3.74	-	-	-	-

^{1/} Compiled by Economic and Statistical Analysis Division, ERS.

^{2/} Weighted averages for combined rail and truck receipts compiled by Market News Branch, Fruit and Vegetable Division, C&MS, from information supplied by Economic and Statistical Analysis Division, ERS.

^{3/} Includes Red Strains.

Table 2.--Continued

DECIDUOUS FRUITS--CONTINUED

Market, Origin and description	Jan.	Feb.	Mar.	Apr.	May	June	July	Aug.	Sept.	Oct.	Nov.	Dec.
	Dollars Per Unit											
<u>Apricots</u>												
<u>New York:</u>												
Calif., Royal, per lug	-	-	-	-	-	5.41	-	-	-	-	-	-
Tilton, per lug	-	-	-	-	-	6.82	5.80	-	-	-	-	-
Perfection, per lug	-	-	-	-	-	5.95	5.79	-	-	-	-	-
<u>Chicago:</u>												
Calif., Royal, per lug	-	-	-	-	-	4.83	-	-	-	-	-	-
Tilton, per lug	-	-	-	-	-	5.72	5.29	-	-	-	-	-
<u>Cherries</u>												
<u>New York:</u>												
<u>15-Pound Lug</u>												
Calif., Bing	-	-	-	-	9.21	6.54	-	-	-	-	-	-
Tartarian	-	-	-	-	5.71	4.79	-	-	-	-	-	-
Oreg., Bing	-	-	-	-	-	9.07	8.44	5.35	-	-	-	-
Lambert	-	-	-	-	-	-	5.76	4.62	-	-	-	-
Wash., Bing	-	-	-	-	-	9.16	6.87	5.51	-	-	-	-
Lambert	-	-	-	-	-	-	5.25	5.14	-	-	-	-
<u>Chicago:</u>												
<u>15-Pound Lug</u>												
Calif., Bing	-	-	-	-	8.83	5.83	-	-	-	-	-	-
Tartarian	-	-	-	-	4.81	5.31	-	-	-	-	-	-
Oreg., Bing	-	-	-	-	-	-	7.68	6.98	-	-	-	-
Lambert	-	-	-	-	-	-	5.77	5.07	-	-	-	-
Wash., Bing	-	-	-	-	-	8.05	6.72	-	-	-	-	-
Lambert	-	-	-	-	-	-	5.46	3.36	-	-	-	-
<u>Grapes</u>												
<u>New York:</u>												
<u>Table Stock, Per Lug</u>												
Calif., Calmeria	6.95	7.46	7.33	-	-	-	-	-	2.81	4.73	5.43	5.20
Cardinal	-	-	-	-	-	6.33	4.36	4.38	3.31	-	-	-
Emperor	4.06	4.81	6.03	-	-	-	-	-	3.56	3.14	3.46	3.69
Perlette	-	-	-	-	-	9.21	5.83	4.29	-	-	-	-
Ribier	3.89	2.10	-	-	-	-	7.13	4.74	4.14	4.29	4.83	5.01
Thompson Seedless	-	-	-	-	-	8.37	5.29	4.45	4.46	4.28	5.80	-
<u>Chicago:</u>												
<u>Table Stock, Per Lug</u>												
Calif., Calmeria	5.74	-	-	-	-	-	-	-	-	4.23	4.86	5.24
Cardinal	-	-	-	-	-	5.91	3.71	4.06	4.00	-	-	-
Emperor	5.09	3.98	4.94	-	-	-	-	-	-	3.29	3.05	3.17
Perlette	-	-	-	-	-	8.15	5.57	-	-	-	-	-
Ribier	2.90	-	-	-	-	-	6.62	4.76	4.35	3.99	3.95	4.74
Thompson Seedless	-	-	-	-	-	7.35	5.33	4.43	4.48	4.38	5.93	-
<u>Nectarines</u>												
<u>New York:</u>												
<u>2-Layer Lug, Cup Pack</u>												
Calif., Early SunGrand	-	-	-	-	-	5.41	3.82	-	-	-	-	-
LeGrand	-	-	-	-	-	-	-	2.48	2.61	-	-	-
Late LeGrand	-	-	-	-	-	-	-	2.42	2.96	2.77	-	-
<u>Chicago:</u>												
<u>2-Layer Lug, Cup Pack</u>												
Calif., Early SunGrand	-	-	-	-	-	4.66	3.48	-	-	-	-	-
LeGrand	-	-	-	-	-	-	2.63	2.21	-	-	-	-
SunGrand	-	-	-	-	-	-	3.04	3.01	-	-	-	-
Sunrise	-	-	-	-	-	4.22	2.24	-	-	-	-	-
Late LeGrand	-	-	-	-	-	-	-	2.42	2.92	-	-	-
<u>Peaches</u>												
<u>New York:</u>												
<u>Per Box</u>												
Calif., Elberta	-	-	-	-	-	-	-	1.12	-	-	-	-
<u>2-Layer Lug, Cup Pack</u>												
Calif., Redhaven	-	-	-	-	-	5.86	3.19	2.91	-	-	-	-
Rio Oso Gem	-	-	-	-	-	-	-	2.68	-	-	-	-

Table 2.--Continued

DECIDUOUS FRUITS--CONTINUED

Market, Origin and description	Jan.	Feb.	Mar.	Apr.	May	June	July	Aug.	Sept.	Oct.	Nov.	Dec.
	Dollars Per Unit											
<u>Peaches--Continued</u>												
<u>Chicago:</u>												
<u>2-Layer Lug, Cup Pack</u>												
Calif., Redhaven	-	-	-	-	-	5.12	3.40	-	-	-	-	-
Rio Oso Gem	-	-	-	-	-	-	-	2.96	-	-	-	-
<u>Pears</u>												
<u>New York:</u>												
<u>All Grades, Per Box</u>												
Calif., Bartlett	-	-	-	-	-	-	5.28	5.52	5.19	5.41	5.20	-
Bosc	-	-	-	-	-	-	-	-	5.09	4.93	4.53	-
Comice	-	-	-	-	-	-	-	-	6.72	5.85	5.94	5.58
D'Anjou	-	-	-	-	-	-	-	-	5.04	4.60	4.75	-
Winter Nelis	-	-	5.83	-	-	-	-	-	-	-	-	-
Oreg., Bartlett	4.85	-	-	-	-	-	-	-	4.71	5.07	4.45	2.83
Bosc	6.84	6.95	7.73	-	-	-	-	-	5.44	5.11	5.50	4.92
Buerre Easter	3.95	3.57	3.92	-	-	-	-	-	-	-	-	-
Comice	7.34	6.53	-	-	-	-	-	-	-	5.90	5.50	5.19
D'Anjou	5.54	5.61	5.33	4.38	3.94	2.14	-	-	-	4.94	5.54	5.40
Winter Nelis	-	-	-	-	-	3.05	-	-	-	-	-	-
Wash., Bartlett	-	-	-	-	-	-	-	5.07	4.25	4.43	3.12	2.72
Bosc	4.96	-	-	-	-	-	-	-	-	4.19	4.47	4.01
Comice	6.60	-	-	-	-	-	-	-	-	-	4.77	5.24
D'Anjou	5.60	5.55	5.46	4.44	4.05	3.40	-	-	-	4.66	5.53	5.13
<u>Chicago:</u>												
<u>All Grades, Per Box</u>												
Calif., Bartlett	-	-	-	-	-	-	5.28	5.34	4.88	5.45	6.00	-
Oreg., Bartlett	-	-	-	-	-	-	-	-	-	5.23	4.87	4.70
Bosc	6.99	5.59	-	-	-	-	-	-	-	5.67	5.57	5.24
D'Anjou	5.18	5.44	5.43	4.53	4.69	3.31	-	-	-	-	5.76	5.42
Wash., Bartlett	-	-	-	-	-	-	-	4.26	3.93	4.32	-	5.85
D'Anjou	5.90	5.84	5.33	4.56	3.68	3.54	-	-	-	3.39	5.96	5.98
<u>Pineapples</u>												
<u>New York:</u>												
Puerto Rico, crate	-	-	-	-	7.42	6.87	-	-	-	-	-	-
<u>Plums</u>												
<u>New York:</u>												
<u>Per Crate</u>												
Calif., Beauty	-	-	-	-	-	4.40	3.73	-	-	-	-	-
Eldorado	-	-	-	-	-	-	3.75	3.57	4.71	-	-	-
Late Santa Rosa	-	-	-	-	-	-	4.07	3.22	3.65	-	-	-
President	-	-	-	-	-	-	-	3.06	3.66	-	-	-
Santa Rosa	-	-	-	-	-	4.84	4.22	2.78	-	-	-	-
Laroda	-	-	-	-	-	-	4.07	3.31	4.42	-	-	-
<u>Chicago:</u>												
<u>Per Crate</u>												
Calif., Beauty	-	-	-	-	-	4.50	-	-	-	-	-	-
Eldorado	-	-	-	-	-	-	3.78	3.33	-	-	-	-
Late Santa Rosa	-	-	-	-	-	-	4.51	3.32	2.55	-	-	-
President	-	-	-	-	-	-	-	3.26	3.50	-	-	-
Santa Rosa	-	-	-	-	-	4.38	4.07	-	-	-	-	-
<u>Prunes, Fresh</u>												
<u>New York:</u>												
<u>1/2-Bushel Basket</u>												
Northwest, Italian	-	-	-	-	-	-	-	3.00	3.00	2.46	-	-
<u>Chicago:</u>												
<u>1/2-Bushel Basket</u>												
Northwest, Italian	-	-	-	-	-	-	-	2.86	2.44	-	-	-

Table 3.-Average prices of specified fruits and vegetables at leading shipping points, each month by description of sale 1964.

(Prices in this table are simple averages of the mid-points of the daily range and are only for months during which market news stations were in operation in the specified districts. All sales F.O.B. shipping point, unless otherwise stated.)

BERRIES

Shipping point and description of sale	Jan.	Feb.	Mar.	Apr.	May	June	July	Aug.	Sept.	Oct.	Nov.	Dec.
	- - - Dollars Per Unit - - -											
<u>Blueberries</u>												
<u>Michigan:</u>												
<u>Benton Harbor</u>												
<u>Cash Market Growers' Sales</u>												
<u>Cultivated, Film Wrapped</u>												
Various varie., 12-pt. flat	-	-	-	-	-	-	3.38	3.22	3.34	-	-	-
<u>New Jersey:</u>												
<u>Hammonton Area, Auction Sales</u>												
<u>Cultivated, Film Wrapped</u>												
Various varie., 12-pt. flat	-	-	-	-	-	3.40	3.28	-	-	-	-	-
<u>Raspberries</u>												
<u>Michigan:</u>												
<u>Benton Harbor</u>												
<u>Cash Market Growers' Sales</u>												
<u>12-Pint Flats</u>												
Black	-	-	-	-	-	-	3.22	-	-	-	-	-
Red	-	-	-	-	-	-	3.19	-	-	-	-	-
<u>Strawberries</u>												
<u>Arkansas:</u>												
<u>Auction Sales</u>												
<u>U.S. No. 1, 16-Quart Crate</u>												
<u>Bald Knob Area</u>												
Blakmore	-	-	-	-	4.82	-	-	-	-	-	-	-
Tennessee Beauty	-	-	-	-	5.74	-	-	-	-	-	-	-
<u>Marshall Area</u>												
Blakmore	-	-	-	-	5.28	-	-	-	-	-	-	-
Tennessee Beauty	-	-	-	-	5.42	-	-	-	-	-	-	-
<u>California:</u>												
<u>Central (Coastal Points)</u>												
Various varie., 12-pt. tray	-	-	-	-	3.05	2.88	3.00	-	-	-	-	-
<u>Southern (Orange County)</u>												
Various varie., 12-pt. tray	-	-	4.26	3.52	2.98	2.64	-	-	-	-	-	-
<u>Florida:</u>												
<u>Delivered Sales Shipping Point Basis</u>												
<u>12-Pint Flats</u>												
Various varie., per pint	-	-	-	-	-	-	-	-	-	-	-	.34
<u>Delaware:</u>												
<u>Laurel Area, Auction Sales</u>												
Various varie., 16-qt. crate	-	-	-	-	5.46	4.95	-	-	-	-	-	-
<u>Louisiana:</u>												
<u>Hammond Area</u>												
<u>Various Varieties - Jumble Pack</u>												
12-pint flats	-	-	-	3.32	2.90	-	-	-	-	-	-	-
<u>Maryland:</u>												
<u>Eastern Shore, Auction Sales</u>												
<u>Various Varieties, 16-Quart Crate</u>												
Salisbury Area	-	-	-	-	5.20	-	-	-	-	-	-	-
<u>Michigan:</u>												
<u>Benton Harbor</u>												
<u>Cash Market Growers' Sales</u>												
<u>16-Quart Crate</u>												
Various varieties	-	-	-	-	-	4.62	-	-	-	-	-	-
<u>Alpena District, Auction Sales</u>												
<u>16-Quart Crate & 2-8-Quart Flats</u>												
Various varieties	-	-	-	-	-	5.65	4.96	-	-	-	-	-
<u>New Jersey:</u>												
<u>South New Jersey Points, Auction Sales</u>												
<u>Vineland Area, 16-Quart Crate</u>												
Various varieties	-	-	-	-	6.50	5.48	-	-	-	-	-	-

Table 3.--Continued

BERRIES--CONTINUED

Shipping point and description of sale	Jan.	Feb.	Mar.	Apr.	May	June	July	Aug.	Sept.	Oct.	Nov.	Dec.
	- - - Dollars Per Unit - - -											

Strawberries--Continued

Virginia:

Eastern Shore, Auction Sales

Empire Area, 16-Quart Crate

Various varieties	-	-	-	-	6.04	-	-	-	-	-	-	-
-------------------------	---	---	---	---	------	---	---	---	---	---	---	---

CITRUS FRUITS

Lemons

California:

Southern and Central Districts

Cartons - Shippers First Grade

140-165s	3.26	3.09	3.25	3.89	2.79	2.93	3.05	3.20	3.66	4.20	4.38	4.47
----------------	------	------	------	------	------	------	------	------	------	------	------	------

Choice

140-165s	2.23	2.24	2.48	2.52	2.54	2.68	2.66	2.52	2.98	3.14	2.89	2.82
----------------	------	------	------	------	------	------	------	------	------	------	------	------

Oranges

California:

Southern and Central Districts

Navel, Carton - Shippers First Grade

88-113s	2.92	2.92	3.40	3.85	-	-	-	-	-	-	5.21	3.30
---------------	------	------	------	------	---	---	---	---	---	---	------	------

138-163s	2.46	2.55	2.73	2.68	-	-	-	-	-	-	4.21	3.62
----------------	------	------	------	------	---	---	---	---	---	---	------	------

Choice

88-113s	2.26	2.35	2.68	3.12	-	-	-	-	-	-	4.46	2.54
---------------	------	------	------	------	---	---	---	---	---	---	------	------

138-163s	2.06	2.13	2.26	2.38	-	-	-	-	-	-	3.50	2.64
----------------	------	------	------	------	---	---	---	---	---	---	------	------

Valencia, Carton - Shippers First Grade

88-113s	-	-	-	-	3.49	3.70	4.04	5.38	5.57	5.82	5.82	-
---------------	---	---	---	---	------	------	------	------	------	------	------	---

138-163s	-	-	-	-	2.73	2.59	2.64	3.30	3.56	4.00	4.08	-
----------------	---	---	---	---	------	------	------	------	------	------	------	---

Choice

88-113s	-	-	-	-	2.71	2.76	2.98	3.88	3.98	4.22	4.22	-
---------------	---	---	---	---	------	------	------	------	------	------	------	---

138-163s	-	-	-	-	2.34	2.30	2.37	2.72	3.01	3.42	3.42	-
----------------	---	---	---	---	------	------	------	------	------	------	------	---

OTHER FRUITS

Apples

Michigan:

West Michigan Points

Carton Tray Pack, U.S. Fancy,

12 1/2 & Larger

Jonathan	-	-	-	-	-	-	-	-	-	2.44	2.75	2.75
----------------	---	---	---	---	---	---	---	---	---	------	------	------

McIntosh	-	-	-	-	-	-	-	-	2.25	2.32	-	-
----------------	---	---	---	---	---	---	---	---	------	------	---	---

Red Delicious	-	-	-	-	-	-	-	-	3.77	3.58	3.65	3.75
---------------------	---	---	---	---	---	---	---	---	------	------	------	------

10-4-lb. Film, Master Container, 2 1/2-in. up

Jonathan	2.68	2.61	-	-	-	-	-	-	2.21	1.96	2.23	2.25
----------------	------	------	---	---	---	---	---	---	------	------	------	------

McIntosh	2.59	2.58	-	-	-	-	-	2.73	1.93	2.03	2.32	2.34
----------------	------	------	---	---	---	---	---	------	------	------	------	------

Red Delicious	3.05	3.00	-	-	-	-	-	-	3.26	2.84	2.82	2.98
---------------------	------	------	---	---	---	---	---	---	------	------	------	------

G.A. Storage, Cartons - U.S. Fancy

12-3-lb. Film, Master Container, 2 1/2-in. up

Jonathan	3.43	2.99	2.88	-	-	-	-	-	-	-	-	3.10
----------------	------	------	------	---	---	---	---	---	---	---	---	------

McIntosh	3.38	3.29	3.13	-	-	-	-	-	-	-	-	-
----------------	------	------	------	---	---	---	---	---	---	---	---	---

Red Delicious	-	3.47	3.63	-	-	-	-	-	-	-	-	-
---------------------	---	------	------	---	---	---	---	---	---	---	---	---

New York:

Western and Central New York Points

Sales f.o.b. Shipping Point and Delivered

Sales Shipping Point Basis

U.S. No. 1, 2 1/2-in. up, Master Containers

12-3-lb. Film Bags												
--------------------	--	--	--	--	--	--	--	--	--	--	--	--

McIntosh	2.91	2.89	-	-	-	-	-	-	2.58	2.59	2.62	2.62
----------------	------	------	---	---	---	---	---	---	------	------	------	------

Red Delicious	3.30	3.07	3.08	-	-	-	-	-	-	3.08	3.04	2.98
---------------------	------	------	------	---	---	---	---	---	---	------	------	------

G.A. Storage

McIntosh	-	3.40	3.40	3.40	-	-	-	-	-	-	-	-
----------------	---	------	------	------	---	---	---	---	---	---	---	---

Red Delicious	-	-	4.25	4.43	-	-	-	-	-	-	-	-
---------------------	---	---	------	------	---	---	---	---	---	---	---	---

Table 3.--Continued

OTHER FRUITS--CONTINUED

Shipping point and description of sale	Jan.	Feb.	Mar.	Apr.	May	June	July	Aug.	Sept.	Oct.	Nov.	Dec.
	Dollars Per Unit											
<u>Apples--Continued</u>												
<u>New York: Cont'd</u>												
<u>Western and Central New York Points</u>												
<u>Sales f.o.b. Shipping Point and Delivered</u>												
<u>Sales Shipping Point Basis</u>												
<u>U.S. No. 1, 2 1/2-in. up, Master Containers</u>												
<u>10-4-lb. Film Bags</u>												
Cortland	2.67	2.60	-	-	-	-	-	-	2.50	2.42	2.49	2.50
McIntosh	3.07	2.99	-	-	-	-	-	-	2.47	2.43	2.71	2.75
Red Delicious	3.41	3.09	3.20	3.24	-	-	-	-	-	-	3.16	3.24
Red Rome	3.12	2.98	3.07	3.12	-	-	-	-	-	-	-	-
<u>Washington:</u>												
<u>Yakima Valley</u>												
<u>Carton Tray Pack, Extra Fancy,</u>												
<u>138s & Larger</u>												
Golden Delicious	3.38	3.21	3.92	-	-	-	-	-	4.74	4.75	4.78	4.88
Red Delicious	3.23	3.23	4.06	4.64	-	-	-	-	4.32	4.25	4.25	4.25
Winesap	3.22	3.14	3.22	3.40	4.08	3.97	-	-	-	3.75	3.65	3.66
<u>C.A. Storage</u>												
Golden Delicious	-	-	5.61	6.41	6.80	-	-	-	-	-	-	-
Red Delicious	-	-	5.11	5.73	6.50	-	-	-	-	-	-	-
<u>West Virginia:</u>												
<u>Appalachian District (W.Va.-Va.-Md.-Pa.)</u>												
<u>Carton Tray Pack, Combination U.S. Extra Fancy</u>												
<u>and U.S. Fancy, 125s & Larger</u>												
Red Delicious	3.47	3.35	3.62	-	-	-	-	-	4.51	4.05	4.18	4.22
Red Rome	3.26	3.22	-	-	-	-	-	-	-	3.45	3.38	3.39
Red Stayman	3.30	-	-	-	-	-	-	-	-	3.39	3.38	3.39
<u>4-lb. Film Bags, Master Containers</u>												
<u>U.S. Fancy, 2 1/2-in. up</u>												
Red Delicious	-	-	-	-	-	-	-	-	.33	.28	.29	.30
Red Rome	-	-	-	-	-	-	-	-	-	.28	.28	.28
Red Stayman	-	-	-	-	-	-	-	-	-	.27	.28	.28
<u>Apricots</u>												
<u>Washington:</u>												
<u>Yakima Valley</u>												
<u>Wash. No. 1, 6 Row & Larger</u>												
<u>Double Faced</u>												
Hooparks, 14-lb. lug	-	-	-	-	-	-	1.40	-	-	-	-	-
28-lb. lug, loose	-	-	-	-	-	-	2.21	-	-	-	-	-
<u>Cherries</u>												
<u>Washington:</u>												
<u>Yakima Valley</u>												
<u>U.S. No. 1 - Bing</u>												
20-lb. lugs, loose, 12 row & Igr...	-	-	-	-	-	7.45	6.07	-	-	-	-	-
<u>Grapes</u>												
<u>California:</u>												
<u>Conchella Valley</u>												
<u>24-lb. Lugs</u>												
Cardinal	-	-	-	-	-	5.81	3.80	-	-	-	-	-
Perlette	-	-	-	-	-	6.67	-	-	-	-	-	-
Ribier	-	-	-	-	-	-	5.54	-	-	-	-	-
Thompson Seedless	-	-	-	-	-	6.44	4.10	-	-	-	-	-
<u>Fresno-Central San Joaquin Valley</u>												
<u>27-lb. Lugs</u>												
Emperor	2.97	3.39	-	-	-	-	-	-	-	2.20	2.25	2.28
Red Malaga	-	-	-	-	-	-	-	3.25	-	-	-	-
Ribier	-	-	-	-	-	-	-	3.48	3.18	2.79	2.88	3.00
Thompson Seedless	-	-	-	-	-	-	-	2.72	2.82	3.24	-	-
<u>Kern County Points</u>												
<u>27-lb. Lugs</u>												
Cardinal	-	-	-	-	-	-	3.74	3.04	-	-	-	-
Emperor	3.39	3.95	-	-	-	-	-	-	-	2.63	2.69	2.92

Table 3.--Continued

OTHER FRUITS--CONTINUED

Shipping point and description of sale	Jan.	Feb.	Mar.	Apr.	May	June	July	Aug.	Sept.	Oct.	Nov.	Dec.
	Dollars Per Unit											
<u>Grapes--Continued</u>												
<u>California: Cont'd</u>												
<u>Kern County Points Cont'd</u>												
<u>27-lb. Lugs</u>												
Red Malaga	-	-	-	-	-	-	-	3.25	-	-	-	-
Ribier	-	-	-	-	-	-	5.80	3.90	3.38	2.99	3.42	3.80
Thompson Seedless	-	-	-	-	-	-	4.88	3.15	3.39	3.78	-	-
<u>Lodi District</u>												
<u>U.S. No. 1, 27-lb. Lugs</u>												
Tokay	-	-	-	-	-	-	-	-	2.10	1.83	-	-
<u>Michigan:</u>												
<u>Benton Harbor</u>												
<u>Cash Market Growers' Sales</u>												
<u>Concord</u>												
Fancy table, crts. & ctns., 8, 2-qt.	-	-	-	-	-	-	-	-	3.11	-	-	-
<u>Nectarines</u>												
<u>California:</u>												
<u>Fresno-Central San Joaquin Valley</u>												
<u>2-Layer Lug, Cup Pack</u>												
Early SunGrand, 80-84s	-	-	-	-	-	3.88	2.70	-	-	-	-	-
Regular SunGrand, 80-84s	-	-	-	-	-	-	2.58	-	-	-	-	-
LeGrand, 70s & larger	-	-	-	-	-	-	2.54	1.98	-	-	-	-
Late LeGrand, 70s & larger	-	-	-	-	-	-	-	2.00	2.18	-	-	-
Sunrise, 80-84s	-	-	-	-	-	3.12	-	-	-	-	-	-
<u>Peaches</u>												
<u>Arkansas:</u>												
<u>Clarksville Area</u>												
<u>U.S. No. 1, 2-in. up</u>												
<u>3/4-Bushel Basket or W.B. Crate</u>												
Redhaven	-	-	-	-	-	-	5.42	-	-	-	-	-
Southland	-	-	-	-	-	-	3.65	-	-	-	-	-
<u>Nashville Area</u>												
<u>U.S. No. 1, 2-in. up</u>												
<u>3/4-Bushel Basket or W.B. Crate</u>												
Elberta	-	-	-	-	-	-	3.43	-	-	-	-	-
<u>Crowley-Ridge Area</u>												
<u>U.S. No. 1, 2-in. up</u>												
<u>3/4-Bushel Basket or W.B. Crate</u>												
Redhaven	-	-	-	-	-	6.50	6.40	-	-	-	-	-
Triogen	-	-	-	-	-	-	4.93	-	-	-	-	-
<u>California:</u>												
<u>Central San Joaquin Valley</u>												
<u>2-Layer Lug, Cup Pack</u>												
<u>70s & Larger, unless stated</u>												
J.H. Hales	-	-	-	-	-	-	1.91	1.77	-	-	-	-
Red Globe	-	-	-	-	-	-	2.44	-	-	-	-	-
Redhaven	-	-	-	-	-	3.48	2.84	-	-	-	-	-
Rio Oso Gem	-	-	-	-	-	-	-	2.20	2.32	-	-	-
Robins	-	-	-	-	-	3.98	-	-	-	-	-	-
Springtime, 72s & lgr.	-	-	-	-	4.00	-	-	-	-	-	-	-
<u>Pch. box, 65s & Larger</u>												
Early Elberta	-	-	-	-	-	-	1.56	-	-	-	-	-
Elberta	-	-	-	-	-	-	1.41	1.28	-	-	-	-
<u>Georgia:</u>												
<u>Macon & Georgia Points</u>												
<u>U.S. Extra No. 1, 2-in. up</u>												
<u>1/2-Bushel Basket or W.B. Crate</u>												
Coronet	-	-	-	-	-	3.94	-	-	-	-	-	-
Dixired	-	-	-	-	-	-	3.76	-	-	-	-	-
Keystone	-	-	-	-	-	4.50	-	-	-	-	-	-
Southland	-	-	-	-	-	-	4.56	-	-	-	-	-

Table 3.--Continued

OTHER FRUITS--CONTINUED

Shipping point and description of sale	Jan.	Feb.	Mar.	Apr.	May	June	July	Aug.	Sept.	Oct.	Nov.	Dec.
	- - - Dollars Per Unit - - -											
<u>Peaches--Continued</u>												
<u>Michigan</u>												
<u>West Michigan Points</u>												
<u>3/4-Bushel Crates or Cartons</u>												
<u>U.S. No. 1, 2-in. up</u>												
Halehaven	-	-	-	-	-	-	-	2.02	-	-	-	-
Redhaven	-	-	-	-	-	-	-	3.25	-	-	-	-
Redskin	-	-	-	-	-	-	-	-	3.04	-	-	-
<u>New Jersey:</u>												
<u>South & Central New Jersey Points</u>												
<u>Delivered Sales Shipping Point Basis and</u>												
<u>Sales f.o.b. Inspection and Acceptance Arrival</u>												
<u>3/4-Bushel Basket, 2-in. up</u>												
Redhaven	-	-	-	-	-	-	4.10	-	-	-	-	-
Rio Oso Gem	-	-	-	-	-	-	-	-	4.21	-	-	-
Sunhigh	-	-	-	-	-	-	-	3.12	-	-	-	-
<u>Washington:</u>												
<u>Yakima Valley</u>												
<u>Truck & L.C.L. Sales</u>												
<u>2-Layer Lug, Cup Pack, Wash. No. 1</u>												
Elberta, Pch.box, wrpd., 65s & 1gr..	-	-	-	-	-	-	-	1.49	1.48	-	-	-
Males, 60s & 1gr.	-	-	-	-	-	-	-	2.42	2.06	-	-	-
Pch.box, wrpd., 65s & 1gr..	-	-	-	-	-	-	-	1.59	1.50	-	-	-
26-lb. lug, loose	-	-	-	-	-	-	-	1.96	1.81	-	-	-
<u>West Virginia:</u>												
<u>Appalachian District (Md.-Pa.-Va.-W.Va.)</u>												
<u>U.S. No. 1 or better, 2-in. up</u>												
<u>3/4-Bushel Cartons or Crates</u>												
Elberta	-	-	-	-	-	-	-	2.48	-	-	-	-
Redhaven	-	-	-	-	-	-	3.79	3.11	-	-	-	-
Sunhigh	-	-	-	-	-	-	3.50	3.10	-	-	-	-
<u>Pears</u>												
<u>Washington:</u>												
<u>Yakima Valley</u>												
<u>Boxes, Wrapped, Film Lined</u>												
Bartlett, U.S.No. 1, Var. sizes ...	-	-	-	-	-	-	-	3.84	3.50	3.69	-	-
D'Anjou, U.S.No. 1, Var. sizes	4.98	4.89	4.95	-	-	-	-	-	-	4.50	4.52	4.50
<u>Plums</u>												
<u>California:</u>												
<u>Central San Joaquin Valley</u>												
<u>U.S. No. 1, 4-Basket Crate - 4x5s</u>												
Beauty,	-	-	-	-	-	4.02	-	-	-	-	-	-
Burmosa,	-	-	-	-	-	3.62	-	-	-	-	-	-
Eldorado,	-	-	-	-	-	-	2.52	2.25	-	-	-	-
Laroda,	-	-	-	-	-	-	2.72	2.50	-	-	-	-
Late Santa Rosa,	-	-	-	-	-	-	3.26	2.62	2.58	-	-	-
President,	-	-	-	-	-	-	-	2.56	2.50	-	-	-
Santa Rosa,	-	-	-	-	-	3.44	3.32	-	-	-	-	-
<u>Prunes, Fresh</u>												
<u>Idaho:</u>												
<u>Western Idaho & Malheur Co., Oregon</u>												
<u>U.S. No. 1</u>												
Italian type, 1/2-bu.bkt., ring faced.	-	-	-	-	-	-	-	1.88	2.12	-	-	-
30-lb. carton, loose	-	-	-	-	-	-	-	1.76	1.90	-	-	-
<u>Washington:</u>												
<u>Italian type</u>												
<u>Yakima Valley, Wash. No. 1</u>												
1/2-bushel basket, faced	-	-	-	-	-	-	-	2.06	1.80	-	-	-
30-lb. carton, loose	-	-	-	-	-	-	-	1.91	1.66	-	-	-
<u>Milton-Freewater Section</u>												
1/2-bushel basket, faced	-	-	-	-	-	-	-	2.12	1.94	-	-	-

Table 3.--Continued

MELONS

Shipping point and description of sale	Jan.	Feb.	Mar.	Apr.	May	June	July	Aug.	Sept.	Oct.	Nov.	Dec.
	Dollars Per Unit											
<u>Cantaloups</u>												
<u>Arizona:</u>												
<u>Vine Ripened</u>												
<u>Yuma District</u>												
Jumbo crate, 36s	-	-	-	-	-	6.50	5.39	-	-	-	-	-
<u>California:</u>												
<u>Vine Ripened</u>												
<u>Rivthe District (Palo Verde Valley)</u>												
Jumbo crate, 36s	-	-	-	-	-	6.73	5.90	-	-	-	-	-
<u>El Centro (Imperial Valley)</u>												
Jumbo crate, 36s	-	-	-	-	-	6.98	-	-	-	-	-	-
<u>West Side District</u>												
Jumbo crate, 36s	-	-	-	-	-	-	3.97	3.25	3.40	-	-	-
<u>Wheeler Ridge Section</u>												
Jumbo crate, 36s	-	-	-	-	-	-	4.48	-	-	-	-	-
<u>Delaware:</u>												
<u>Laurel Area - Auction Sales</u>												
Loose, each	-	-	-	-	-	-	.14	.12	.09	-	-	-
<u>New Jersey:</u>												
<u>Vineland Area - Auction Sales</u>												
Various varie., crts., 12-16s	-	-	-	-	-	-	-	1.88	-	-	-	-
<u>Honeydews</u>												
<u>California:</u>												
<u>Fresno-Central San Joaquin Valley</u>												
Standard crate, 9-12s	-	-	-	-	-	-	-	2.31	2.25	-	-	-
<u>Miscellaneous Melons</u>												
<u>California:</u>												
<u>Fresno-Central San Joaquin Valley</u>												
<u>Jumbo Flat Crates - 6s</u>												
Cañaba,	-	-	-	-	-	-	-	2.82	2.64	-	-	-
Cranshaw,	-	-	-	-	-	-	-	3.02	2.75	-	-	-
Persian,	-	-	-	-	-	-	-	3.04	2.66	-	-	-
Santa Claus,	-	-	-	-	-	-	-	2.75	2.66	-	-	-
<u>Watermelons</u>												
<u>Arizona:</u>												
<u>Phoenix & Central Arizona Points</u>												
Peacock, 18-22-lb. av., per ton	-	-	-	-	-	72.00	41.92	-	-	-	-	-
<u>California:</u>												
<u>El Centro (Imperial Valley)</u>												
Peacock, 16-20-lb. av., per ton	-	-	-	-	-	72.86	46.79	-	-	-	-	-
<u>Fresno-Southern & Central San Joaquin Valley</u>												
Peacock, 16-18-lb. av., per ton	-	-	-	-	-	-	42.22	40.00	-	-	-	-
<u>Kern District</u>												
Peacock & Stripes, 16-20-lb. av., per ton	-	-	-	-	-	-	42.00	39.25	-	-	-	-
<u>Delaware:</u>												
<u>Laurel Area - Auction Sales</u>												
<u>Charleston Grays, Per Melon</u>												
20-lb. & up	-	-	-	-	-	-	.36	.24	.37	-	-	-
<u>Florida:</u>												
<u>Florida Points</u>												
<u>Sales f.o.b. Shipping Point and</u>												
<u>Delivered Sales Shipping Point Basis</u>												
<u>Charleston Grays, Per Cwt.</u>												
24-lb. av. & smaller	-	-	-	4.25	2.70	1.68	1.00	-	-	-	-	-
<u>Georgia:</u>												
<u>South & Central Georgia Points</u>												
<u>Sales f.o.b. Shipping Point and</u>												
<u>Delivered Sales Shipping Point Basis</u>												
<u>Charleston Grays, Per Cwt.</u>												
24-lb. av. & smaller	-	-	-	-	-	1.68	.84	-	-	-	-	-

Table 3.--Continued

MELONS--CONTINUED

Shipping point and description of sale	Jan.	Feb.	Mar.	Apr.	May	June	July	Aug.	Sept.	Oct.	Nov.	Dec.
	-- Dollars Per Unit --											
<u>Watermelons--Continued</u>												
<u>Indiana:</u>												
<u>Southwest</u>												
<u>Truck Lot Sales - Cwt. Basis</u>												
<u>Charleston Grays</u>												
18-30-lb. av.	-	-	-	-	-	-	-	1.32	-	-	-	-
<u>Maryland:</u>												
<u>Salisbury Area - Auction Sales</u>												
<u>Charleston Grays, Per Melon</u>												
20-lb. & up	-	-	-	-	-	.40	.22	.31	-	-	-	-
<u>Missouri:</u>												
<u>Kennett (S.E. Mo. Points)</u>												
<u>Prices to Growers, Per Cwt. at Loading Point</u>												
<u>Various Varieties mostly Charleston Gray</u>												
All sizes	-	-	-	-	-	-	1.17	-	-	-	-	-
<u>South Carolina:</u>												
<u>Allendale & Nearby Points</u>												
<u>Sales f.o.b. Cash Truck</u>												
<u>Charleston Grays-U.S. No. 1, Per Cwt.</u>												
All sizes	-	-	-	-	-	-	.92	-	-	-	-	-
<u>Virginia:</u>												
<u>Southeast Virginia Points</u>												
<u>Sales f.o.b. Acceptance Final</u>												
<u>Prices Net to Growers</u>												
<u>Charleston Grays-Trucks, Per Cwt.</u>												
20-24-lb. av.	-	-	-	-	-	-	1.31	.68	-	-	-	-

VEGETABLESAsparagus

<u>California:</u>												
<u>Pyramid Crate</u>												
<u>El Centro (Imperial Valley)</u>												
Green, loose, large	-	-	9.10	5.48	-	-	-	-	-	-	-	-
Green, loose, standard	-	-	8.10	5.14	-	-	-	-	-	-	-	-
<u>Delta District</u>												
Green, loose, 9-in. cut, large	-	-	7.49	4.27	-	-	-	-	-	-	-	-
<u>New Jersey:</u>												
<u>Swedesboro Area - Auction Sales</u>												
<u>Pyramid Crate, 12-Bunches</u>												
Large	-	-	-	5.41	4.76	4.98	-	-	-	-	-	-

Beans, Lima

<u>Florida:</u>												
<u>Pompano Beach Section</u>												
<u>Sales to Local Buyers</u>												
Limas, bushel hamper	4.66	-	4.84	3.68	-	-	-	-	-	-	-	4.28

Beans, Snap

<u>Florida:</u>												
<u>Dade County Points</u>												
Poles, bushel hamper	4.31	5.03	3.05	2.55	-	-	-	-	-	-	2.62	2.72
<u>Lake Okeechobee Section</u>												
Harvester, bushel hamper	-	-	-	2.84	-	-	-	-	-	-	3.66	4.02
<u>Pompano Beach Section</u>												
<u>Sales to Local Buyers</u>												
Harvester, bushel hamper	5.46	5.53	3.89	2.63	-	-	-	-	-	-	4.18	3.97
<u>New Jersey:</u>												
<u>Cedarville Area - Auction Sales</u>												
Harvester, bushel basket	-	-	-	-	-	2.33	2.23	2.61	-	-	-	-

Cabbage

<u>California:</u>												
<u>El Centro (Imperial Valley)</u>												
<u>Domestic Round type</u>												
Cartons, 18-30s	2.09	1.30	1.19	-	-	-	-	-	-	-	-	-

Table 3.--Continued

VEGETABLES--CONTINUED

Shipping point and description of sale	Jan.	Feb.	Mar.	Apr.	May	June	July	Aug.	Sept.	Oct.	Nov.	Dec.
	- - - Dollars Per Unit - - -											
<u>Cabbage--Continued</u>												
<u>Florida:</u>												
<u>Domestic Round Type</u>												
<u>Hastings</u>												
1-3/4 bushel crate	2.06	1.51	1.49	1.40	-	-	-	-	-	-	-	-
<u>Lake Okeechobee Section</u>												
1-3/4 bushel crate	1.97	1.52	1.38	1.25	1.15	-	-	-	-	-	1.69	1.83
<u>Sanford-Oviedo-Zellwood Section</u>												
1-3/4 bushel crate	2.01	1.57	1.51	1.42	1.56	-	-	-	-	-	-	-
<u>New Jersey:</u>												
<u>New Jersey Points</u>												
<u>Delivered Sales Shipping Point Basis and</u>												
<u>Sales f.o.b. Inspection and Acceptance Arrival</u>												
<u>Domestic Round Type</u>												
Various used crts., (approx. 50-lbs).	-	-	-	-	-	1.57	1.54	1.67	2.04	1.80	-	-
<u>Danish Type</u>												
Various used crts., (approx. 50-lbs).	-	-	-	-	-	-	1.73	1.89	2.00	1.71	1.68	-
<u>New York:</u>												
<u>Western & Central New York Points</u>												
<u>Sales f.o.b. Shipping Point and</u>												
<u>Delivered Sales Shipping Point Basis</u>												
<u>50-lb. Sack</u>												
Danish type, small-medium	1.26	1.11	1.24	1.35	-	-	-	-	1.78	1.30	1.62	1.72
<u>Texas:</u>												
<u>Lower Rio Grande Valley</u>												
<u>Domestic Round Type</u>												
1-3/4-bushel crate	2.05	1.49	1.43	1.22	-	-	-	-	-	-	-	2.13
50-lb. sack	1.79	1.23	1.17	.99	-	-	-	-	-	-	-	1.77
<u>Virginia:</u>												
<u>Eastern Shore Points</u>												
<u>Delivered Sales Shipping Point Basis and</u>												
<u>Sales f.o.b. Inspection and Acceptance Arrival</u>												
<u>Domestic Round Type</u>												
1-3/4 bushel crate, new & used, medium, 18-22s	-	-	-	-	-	1.70	-	-	-	-	-	-
<u>Carrots</u>												
<u>Arizona:</u>												
<u>Phoenix & Central Arizona Points</u>												
<u>Topped, Washed</u>												
48-1-lb. film bags, mesh, master container, medium-large	2.78	2.75	-	-	3.20	2.85	-	-	-	-	-	-
<u>California:</u>												
<u>El Centro (Imperial Valley)</u>												
<u>Topped, Washed</u>												
48-1-lb. film bags, mesh, master container, medium-large	-	-	-	2.56	2.77	2.87	-	-	-	-	-	-
<u>Salinas-King City-Watsonville Districts</u>												
<u>Topped, Washed</u>												
48-1-lb. film bag, crt., med.-lge...	-	-	-	-	-	2.94	2.86	3.17	3.50	3.50	3.50	3.04
<u>Michigan:</u>												
<u>Michigan Points</u>												
<u>Topped, Washed</u>												
48-1-lb. film bags, mesh, master container	-	-	-	-	-	-	3.25	2.94	2.82	2.85	2.56	-
<u>Texas:</u>												
<u>Lower Rio Grande Valley</u>												
<u>Topped, Washed</u>												
48-1-lb. film bags, mesh, master container	2.50	2.01	1.78	1.71	2.21	-	-	-	-	-	-	2.86
<u>Cauliflower</u>												
<u>California:</u>												
<u>Irvington-Alvarado-Centerville District</u>												
<u>Flats & 2-Layer Cartons</u>												
Film wrapped, 12s	2.48	2.99	2.94	2.25	-	-	-	-	-	-	-	2.58

Table 3.--Continued

VEGETABLES--CONTINUED

Shipping point and description of sale	Jan.	Feb.	Mar.	Apr.	May	June	July	Aug.	Sept.	Oct.	Nov.	Dec.
	Dollars Per Unit											
<u>Cauliflowers--Continued</u>												
<u>California: Cont'd</u>												
<u>Salinas-Watsonville District</u>												
<u>Flats & 2-Layer Cartons</u>												
Film wrapped, 12s	2.89	-	2.68	2.16	-	-	-	-	-	-	2.82	2.30
<u>Oceano-Santa Maria-Guadalupe Districts</u>												
<u>Flat Crates</u>												
Film wrapped, 12s	2.18	2.96	2.88	2.36	2.36	-	-	-	-	-	-	-
<u>New York:</u>												
<u>Long Island - Auction Sales</u>												
<u>Long Island Crate, Various Sizes</u>												
Riverhead	-	-	-	-	-	-	-	-	2.63	2.54	2.74	2.40
<u>Celery</u>												
<u>California:</u>												
<u>Pascal Type, 16-inch Crate</u>												
<u>Southern California District</u>												
2-3-dozen	3.11	4.28	4.22	2.32	2.28	2.99	3.38	-	-	-	-	2.38
<u>Salinas-Watsonville District</u>												
2-3-dozen	-	-	-	-	-	-	2.27	2.56	2.67	2.46	2.42	1.97
<u>Florida:</u>												
<u>Lake Okeechobee Section</u>												
<u>Pascal Type, 16-inch Crate</u>												
2-10-dozen	2.84	3.64	4.11	2.47	2.13	-	-	-	-	-	2.86	2.21
<u>Michigan:</u>												
<u>West Michigan Points</u>												
<u>Pascal Type, 16-inch Crate</u>												
2-4-dozen	-	-	-	-	-	-	2.95	2.62	2.94	2.38	-	-
<u>New York:</u>												
<u>Western & Central New York Points</u>												
<u>Sales f.o.b. Shipping Point and</u>												
<u>Delivered Sales Shipping Point Basis</u>												
<u>Pascal Type, 16-inch Crate</u>												
2-6-dozen	-	-	-	-	-	-	-	-	2.88	2.64	-	-
<u>Corn, Sweet</u>												
<u>Florida:</u>												
<u>U.S. Fancy, Yellow</u>												
<u>5-Dozen, Crate</u>												
Lake Okeechobee Section	3.18	3.70	3.83	3.44	2.21	-	-	-	-	-	2.90	2.21
Sanford-Oviedo-Zellwood	-	-	-	-	2.19	2.34	-	-	-	-	-	-
<u>New Jersey:</u>												
<u>New Jersey Points</u>												
<u>Sales f.o.b. Inspection and</u>												
<u>Acceptance Arrival</u>												
Yellow, 4 1/2-5-dozen, crt., Hydrocooled.	-	-	-	-	-	-	2.06	-	-	-	-	-
<u>Texas:</u>												
<u>Lower Rio Grande Valley</u>												
Yellow, clipped, 1/2-bu. sack, 5-6 dozen	-	-	-	2.38	1.81	-	-	-	-	-	-	-
<u>Cucumbers</u>												
<u>Florida:</u>												
<u>Et. Myers-Immokalee Section</u>												
<u>Bushel Basket & 1-1/9 Bushel Crate</u>												
Waxed	-	-	-	3.40	3.98	-	-	-	-	-	3.20	3.28
<u>Pompano Beach Section & Nearby Points</u>												
<u>Bushel basket, waxed</u>												
Imports packed locally, bu. bkt. & 1-1/9-bu. crt., waxed	7.44	-	7.72	3.66	-	-	-	-	-	-	3.18	3.56
<u>Michigan:</u>												
<u>Michigan Points</u>												
<u>Bushel Baskets, Washed, Waxed</u>												
Slicers, U.S. No. 1	-	-	-	-	-	-	2.88	4.12	3.38	-	-	-

Table 3.--Continued

VEGETABLES--CONTINUED

Shipping point and description of sale	Jan.	Feb.	Mar.	Apr.	May	June	July	Aug.	Sept.	Oct.	Nov.	Dec.
	- - Dollars Per Unit - -											
<u>Cucumbers--Continued</u>												
<u>New Jersey:</u>												
<u>New Jersey Points</u>												
<u>Delivered Sales Shipping Point Basis and Sales f.o.b. Inspection and Acceptance Arrival</u>												
Bushel baskets, waxed	-	-	-	-	-	-	2.60	-	-	-	-	-
<u>Ohio:</u>												
<u>Cleveland-Northern Ohio Districts</u>												
<u>Greenhouse Grown</u>												
Baskets, U.S. No. 1, 24-30s	-	-	4.80	2.37	2.04	1.88	1.82	-	-	-	-	-
<u>Virginia:</u>												
<u>Eastern Shore Points</u>												
<u>Sales f.o.b. Shipping Point and Delivered Sales Shipping Point Basis</u>												
Bushel basket	-	-	-	-	-	-	-	-	3.55	3.88	-	-
<u>Eggplant</u>												
<u>Florida:</u>												
<u>Plant City - Auction Sales</u>												
Bushel hamper	-	-	-	-	4.67	3.00	-	-	-	-	-	-
<u>Pompano Beach Section</u>												
<u>Sales to Local Buyers</u>												
Bushel basket, wrapped,	2.84	4.68	3.89	1.74	-	-	-	-	-	-	2.75	1.24
<u>New Jersey:</u>												
<u>Vineland Area - Auction Sales</u>												
<u>High Bush Type</u>												
Bushel basket	-	-	-	-	-	-	3.03	1.77	1.61	2.53	-	-
<u>Escarole</u>												
<u>Florida:</u>												
<u>Lake Okeechobee Section</u>												
1-1/9 bushel crate	2.53	2.84	1.48	.96	1.56	-	-	-	-	-	1.56	.99
<u>Lettuce</u>												
<u>Arizona:</u>												
<u>Iceberg Type, Standard Carton, 24s</u>												
Phoenix & Central Arizona Pts.	-	-	1.68	1.23	1.47	-	-	-	-	1.57	2.99	2.46
Wilcox & Eastern Arizona Pts.	-	-	-	-	2.12	1.18	-	-	-	1.94	2.67	-
<u>California:</u>												
<u>Iceberg Type, Standard Carton, 24s</u>												
El Centro (Imperial Valley)	3.41	2.81	2.39	-	-	-	-	-	-	-	-	1.96
Salinas-Watsonville District	-	-	-	1.18	1.40	1.22	1.47	1.72	1.92	1.59	1.45	-
<u>New Jersey:</u>												
<u>South New Jersey Points</u>												
<u>Delivered Sales Shipping Point Basis and Sales f.o.b. Inspection and Acceptance Arrival</u>												
<u>Iceberg Type</u>												
Eastern Iceberg crts. & ctns., 24s..	-	-	-	-	-	1.68	-	-	-	1.99	1.74	-
<u>Texas:</u>												
<u>Lower Rio Grande Valley</u>												
<u>Iceberg Type</u>												
Standard ctns., 24s	3.47	2.71	2.96	-	-	-	-	-	-	-	-	2.06
<u>Wisconsin:</u>												
<u>Central Wisconsin Points</u>												
<u>F.O.B. Trucklot Sales</u>												
<u>Iceberg Type</u>												
Standard ctns., 24s	-	-	-	-	-	-	1.96	2.08	2.24	-	-	-
<u>Onions, Dry</u>												
<u>Arizona:</u>												
<u>Phoenix & Central Arizona Points</u>												
<u>U.S. No. 1, 50-lb. Sack</u>												
Yellow Granex, medium	-	-	-	-	1.41	1.25	-	-	-	-	-	-
<u>California:</u>												
<u>Stockton District</u>												
<u>U.S. No. 1, 50-lb. Sack</u>												
Stockton Yellow Globe, med.	-	-	-	-	-	1.08	1.14	-	-	-	-	-
Stockton Yellow Globe, lge.	-	-	-	-	-	1.14	1.12	-	-	-	-	-

Table 3.--Continued

VEGETABLES--CONTINUED

Shipping point and description of sale	Jan.	Feb.	Mar.	Apr.	May	June	July	Aug.	Sept.	Oct.	Nov.	Dec.
	Dollars Per Unit											
<u>Onions, Dry--Continued</u>												
<u>Colorado:</u>												
<u>Arkansas Valley Points</u>												
<u>Sales f.o.b. Shipping Point and Delivered Sales Shipping Point Basis</u>												
<u>U.S. No. 1, 50-lb. Sack</u>												
Spanish type, 2-in. up	-	-	-	-	-	-	-	-	1.76	2.06	2.19	-
<u>Idaho-Oregon:</u>												
<u>Western Idaho-Malheur County, Oregon</u>												
<u>U.S. No. 1, 50-lb. Sack</u>												
Yellow Spanish, 2-3-in.	-	-	-	-	-	-	-	-	1.04	1.26	1.26	1.35
Yellow Spanish, 3-in. & lgr.	-	-	-	-	-	-	-	-	1.36	1.78	1.99	2.32
<u>Michigan:</u>												
<u>Michigan Points</u>												
<u>U.S. No. 1, 50-lb. Sack</u>												
Yellow Globe, 70-80%, 2-in. & lgr. ..	1.62	1.46	1.48	-	-	-	-	-	1.73 ^{1/2}	1.80	1.68	1.58
<u>New Jersey:</u>												
<u>New Jersey Points</u>												
<u>Delivered Sales Shipping Point Basis and Sales f.o.b. Inspection and Acceptance Arrival</u>												
<u>50-lb. Sack</u>												
Yellow Globe, med.	-	-	-	-	-	-	2.02	-	-	-	-	-
<u>New York:</u>												
<u>Western & Central New York Points</u>												
<u>Sales f.o.b. Shipping Point and Delivered Sales Shipping Point Basis</u>												
<u>U.S. No. 1, 50-lb. Sack</u>												
Yellow Globe, 70-80%, 2-in. & lgr. ...	1.76	1.46	1.44	1.18	-	-	-	-	1.69	1.80	1.76	1.71
<u>Texas:</u>												
<u>Lower Rio Grande Valley</u>												
<u>50-lb. Sack</u>												
<u>80% or better, U.S. No. 1</u>												
Granex, med.	-	-	2.00	-	-	-	-	-	-	-	-	-
Granex, lge.	-	-	3.08	-	-	-	-	-	-	-	-	-
<u>U.S. No. 1</u>												
Granex, med.	-	-	1.66	1.21	1.09	-	-	-	-	-	-	-
Granex, lge.	-	-	2.61	1.21	.91	-	-	-	-	-	-	-
Grano, med.	-	-	-	1.19	1.02	-	-	-	-	-	-	-
Grano, lge.	-	-	-	1.95	1.10	-	-	-	-	-	-	-
Whites, med.	-	-	-	2.62	1.71	-	-	-	-	-	-	-
Whites, lge.	-	-	-	2.70	1.71	-	-	-	-	-	-	-
<u>Winter Garden-Eagle Pass District</u>												
<u>U.S. No. 1, 50-lb. Sack</u>												
Granex, med.	-	-	-	-	1.36	1.36	-	-	-	-	-	-
Granex, lge.	-	-	-	-	1.03	-	-	-	-	-	-	-
Grano, med.	-	-	-	-	1.23	1.26	-	-	-	-	-	-
Grano, lge.	-	-	-	-	1.23	1.40	-	-	-	-	-	-
Whites, med.	-	-	-	-	2.22	2.18	-	-	-	-	-	-
Whites, lge.	-	-	-	-	2.22	2.18	-	-	-	-	-	-
<u>Peppers, Green</u>												
<u>California:</u>												
<u>Salinas-Gilroy, Hollister, San Jose, King City Districts</u>												
<u>Calif. Wonder Type</u>												
Approx. 30-lb. carton	-	-	-	-	-	-	-	-	2.24	3.90	-	-
<u>Florida:</u>												
<u>Plant City - Auction Sales</u>												
<u>Bushel Hampers</u>												
Calif. Wonder type, lge.	-	-	-	-	4.72	3.18	-	-	-	-	-	-
<u>Pompano Beach Section & Nearby Points</u>												
<u>Bushel Basket & 1-1/9 Bushel Crate</u>												
Calif. Wonder type, lge.	4.22	4.46	5.64	5.88	-	-	-	-	-	-	-	-
<u>New Jersey:</u>												
<u>Auction Sales</u>												
<u>Calif. Wonder Type, Bushel Basket</u>												
Vineland Area	-	-	-	-	-	-	3.72	2.04	1.51	2.04	-	-
<u>Texas:</u>												
<u>Lower Rio Grande Valley</u>												
<u>Bushel Basket & Carton</u>												
Calif. Wonder type, med.-lge.	-	-	-	-	-	-	-	-	-	-	2.81	2.50

1/ 60-80%, 2-in. & larger.

Table 3.--Continued

VEGETABLES--CONTINUED

Shipping point and description of sale	Jan.	Feb.	Mar.	Apr.	May	June	July	Aug.	Sept.	Oct.	Nov.	Dec.
	Dollars Per Unit											
<u>Potatoes</u>												
Alabama:												
<u>Foley & Southern Alabama Points</u>												
<u>Sales f.o.b. Shipping Point and</u>												
<u>Delivered Sales Shipping Point Basis</u>												
<u>100-lb. Sack, Washed, U.S.No. 1, Size A</u>												
Round Reds	-	-	-	-	4.22	5.34	-	-	-	-	-	-
Sebago	-	-	-	-	-	5.86	-	-	-	-	-	-
Arizona:												
<u>Phoenix & Central Arizona Points</u>												
<u>100-lb. Sack, Washed, U.S.No. 1, Size A</u>												
Round Reds	-	-	-	-	4.62	4.94	-	-	-	-	-	-
California:												
<u>Kern County Points</u>												
<u>Sales f.o.b. Shipping Point and</u>												
<u>Delivered Sales Shipping Point Basis</u>												
<u>100-lb. Sack, Washed, U.S.No. 1, Size A</u>												
Long Whites	-	-	-	-	3.89	4.38	4.01	-	-	-	-	-
<u>Chino-Perris Valley District</u>												
<u>100-lb. Sack, Washed, U.S. No. 1, Size A</u>												
Long Whites	-	-	-	-	-	-	3.98	3.58	-	-	-	-
<u>Stockton-Delta District</u>												
<u>100-lb. Sack, Washed, U.S.No. 1, Size A</u>												
Long Whites	-	-	-	-	-	-	3.94	3.18	3.04	-	-	-
Colorado:												
<u>Sales f.o.b. Shipping Point and</u>												
<u>Delivered Sales Shipping Point Basis</u>												
<u>100-lb. Sack, Washed, U.S.No. 1, Size A</u>												
<u>North District</u>												
Round Reds, 2-in. up	-	-	-	-	-	-	-	2.68	2.97	-	-	-
<u>San Luis Valley</u>												
Red McClures, 2-1/8-in. up, wshd...	2.10	2.20	2.69	3.14	-	-	-	-	3.14 ^{2/}	3.63 ^{2/}	3.80 ^{2/}	5.02 ^{2/}
Russet Burbank, 25-30Z, 10-oz. & larger	2.52	2.54	3.03	3.68	-	-	-	-	-	-	-	-
Russet Burbank, 1-7/8-in. up	-	-	-	-	-	-	-	-	3.25	3.92	4.65	6.28
Delaware:												
<u>Dover & Nearby Points</u>												
<u>Sales f.o.b. Shipping Point and</u>												
<u>Delivered Sales Shipping Point Basis</u>												
<u>Cwt. Basis, Unwashed, U.S.No. 1, Size A</u>												
Cobblers	-	-	-	-	-	-	4.05	3.29	3.02	-	-	-
Other Round Whites	-	-	-	-	-	-	4.20	3.40	3.02	-	-	-
Florida:												
<u>Dade County Section</u>												
<u>Round Reds, 50-lb. Sack, Washed</u>												
U.S.No. 1, Size A	-	2.54	2.54	2.66	-	-	-	-	-	-	-	-
U.S.No. 1, Size B	-	2.69	2.60	3.00	-	-	-	-	-	-	-	-
<u>Hastings</u>												
<u>Delivered Sales Shipping Point Basis</u>												
<u>To Processors - 100-lb. Sack, Washed</u>												
Sebago, U.S.No. 1, Size A	-	-	-	3.68	4.74	-	-	-	-	-	-	-
<u>Table Stock - 50-lb. Sack</u>												
Sebago, U.S.No. 1, Size A	-	-	-	1.88	2.50	-	-	-	-	-	-	-
Idaho:												
<u>Sales f.o.b. Shipping Point and Delivered Sales Shipping Point Basis</u>												
<u>Upper Valley-Twin Falls, Burley Districts.</u>												
<u>Russet Burbank, Washed, 2-in. or 4-oz. min.</u>												
<u>100-lb. Sack</u>												
U.S. No. 1, Size A	2.58	2.73	3.32	-	-	-	-	-	-	4.50	5.38	6.71
10-oz. min.	-	-	-	-	-	-	-	-	-	5.37	6.36	8.39
U.S. No. 2, 6-oz. min.	1.60	1.72	2.08	-	-	-	-	-	-	3.46	4.08	4.94
<u>Western Idaho and Malheur County, Oregon</u>												
<u>100-lb. Sack, Washed, U.S.No. 1, Size A</u>												
Early Gem, 2-in. or 4-oz. min.	-	-	-	-	-	-	4.00	3.70	-	-	-	-
Russets, 2-in. or 4-oz. min.	-	-	-	-	-	-	-	3.28	-	-	-	-
Russets, U.S. No. 2, 6-oz. min.	-	-	-	-	-	-	-	1.70	2.26	-	-	-

2/ - 2-inch up.

Table 3.--Continued

VEGETABLES--CONTINUED

Shipping point and description of sale	Jan.	Feb.	Mar.	Apr.	May	June	July	Aug.	Sept.	Oct.	Nov.	Dec.
	Dollars Per Unit											
<u>Potatoes--Continued</u>												
Maine:												
<u>Aroostook County Points</u>												
<u>Sales f.o.b. Shipping Point and Delivered Sales Shipping Point Basis</u>												
<u>Various Varieties, Mostly Katahdin Type</u>												
<u>U.S. No. 1, Size A, 2-in. min.</u>												
50-lb. sack76	.82	.89	1.22	1.66	2.25	-	-	-	1.30	1.34	1.79
Maryland-Virginia:												
<u>Eastern Shore Points</u>												
<u>Sales f.o.b. Shipping Point and Delivered Sales Shipping Point Basis</u>												
<u>U.S. No. 1, Size A, Unwashed, 100-lb. Sack</u>												
Cobbler	-	-	-	-	-	4.47	4.52	-	-	-	-	-
Katahdin	-	-	-	-	-	-	4.42	-	-	-	-	-
Pungos	-	-	-	-	-	4.72	4.39	-	-	-	-	-
Michigan:												
<u>Bay County District</u>												
<u>Delivered Sales Shipping Point Basis</u>												
<u>U.S. No. 1, Size A, 50-lb. Sack</u>												
Onaways, mostly washed	-	-	-	-	-	-	2.04	1.51	1.38	-	-	-
<u>Montcalm-Kent Counties & Lower Michigan Points</u>												
<u>U.S. No. 1, Size A, 50-lb. Sack</u>												
Round Whites, mostly washed98	1.04	1.14	-	-	-	-	-	1.33	1.52	1.66	2.14
New Jersey:												
<u>South & Central New Jersey Points</u>												
<u>Delivered Sales Shipping Point Basis and Sales f.o.b. Inspection and Acceptance Arrival</u>												
<u>U.S. No. 1, Size A, Unwashed</u>												
Round Whites, mostly Katahdin, 50-lb. sack	-	-	-	-	-	-	-	1.64	1.42	1.54	-	-
New York:												
<u>Riverhead & Nearby Long Island Points</u>												
<u>Delivered Sales Shipping Point Basis</u>												
<u>U.S. No. 1, Size A</u>												
Chippewa & Katahdin type, 2-in. min., 50-lb. sack, washed & unwashed, mostly washed	1.10	1.13	1.10	-	-	-	-	1.59	1.51	1.58	1.72	2.08
Russet Burbank, 2-in. or 4-oz., 50-lb. sack, washed	1.55	1.62	1.62	-	-	-	-	2.19	2.00	2.21	2.40	2.86
<u>Western & Central New York Points</u>												
<u>Sales f.o.b. Shipping Point and Delivered Sales Shipping Point Basis</u>												
<u>U.S. No. 1, Size A, 50-lb. Sack, Washed</u>												
Round White Varieties	1.03	1.06	1.14	1.37	-	-	-	-	1.48	1.60	1.76	1.99
North Carolina:												
<u>Elizabeth City & Eastern North Carolina Points</u>												
<u>Sales f.o.b. Shipping Point and Delivered Sales Shipping Point Basis</u>												
<u>U.S. No. 1, Size A, 100-lb. Sack, Washed & Unwashed</u>												
Cobbler	-	-	-	-	-	4.69	-	-	-	-	-	-
Pungos	-	-	-	-	-	4.94	4.50	-	-	-	-	-
Oregon-California:												
<u>Klamath Basin Area</u>												
<u>Sales f.o.b. Shipping Point and Delivered Sales Shipping Point Basis</u>												
<u>100-lb. Sack, Washed, Russet Burbank</u>												
U.S. No. 1, Size A, 2-in. or 4-oz. ...	2.62	2.96	3.37	3.40	-	-	-	-	-	4.64 ^{3/4}	4.99 ^{3/4}	6.13 ^{3/4}
Pennsylvania:												
<u>East Pennsylvania Points</u>												
<u>Delivered Sales Shipping Point Basis and Sales f.o.b. Inspection and Acceptance Arrival</u>												
<u>U.S. No. 1, Size A, Unwashed</u>												
Mostly Katahdin, 50-lb. sack	1.11	1.11	-	-	-	-	-	-	-	1.58	1.76	2.09
Washington:												
<u>Yakima Valley, Columbia Basin</u>												
<u>100-lb. Sack, Washed</u>												
<u>Early Gems</u>												
U.S. No. 1, Size A, 2-in. or 4-oz. ...	-	-	-	-	-	-	4.29	-	-	-	-	-
<u>Russet Burbank</u>												
U.S. No. 1, Size A, 2-in. or 4-oz. ...	2.16	2.38	2.74	-	-	-	-	3.52	2.88	3.90	4.90	-

3/ 1-7/8 inch or 4-oz.

Table 3.--Continued

VEGETABLES--CONTINUED

Shipping point and description of sale	Jan.	Feb.	Mar.	Apr.	May	June	July	Aug.	Sept.	Oct.	Nov.	Dec.
	- - - Dollars Per Unit - - -											
<u>Spinach</u>												
<u>Texas:</u>												
<u>Eagle Pass-Winter Garden District</u>												
<u>Bushel Basket</u>												
Savoy type	1.30	1.19	1.15	-	-	-	-	-	-	-	-	1.40
<u>Sweetpotatoes</u>												
<u>California: (Semi-Weekly)</u>												
<u>Stockton-Arwater-Livingston Districts</u>												
<u>40-lb. Carton</u>												
Yellow Jersey	5.17	5.32	-	-	-	-	-	-	5.74	4.59	4.60	5.30
Porto Rico type	3.70	3.70	-	-	-	-	-	-	4.54	4.14	4.52	5.16
<u>Louisiana:</u>												
<u>Southwest Louisiana Points</u>												
<u>Porto Rico Type, 50-lb. Crate</u>												
U.S.No. 1, cured	4.37	4.40	5.00	5.12	-	-	-	-	-	-	4.76	4.75
U.S.No. 1, uncured	-	-	-	-	-	-	-	3.42	3.14	3.39	3.81	-
U.S.No. 2, cured	2.92	2.90	3.35	3.45	-	-	-	-	-	-	3.36	3.38
U.S.No. 2, uncured	-	-	-	-	-	-	-	2.20	2.11	2.26	2.62	-
<u>Maryland: (Semi-Weekly)</u>												
<u>Eastern Shore Points</u>												
<u>Delivered Sales Shipping Point Basis and</u>												
<u>Sales f.o.b. Inspection and Acceptance Arrival</u>												
<u>Washed & Waxed</u>												
Nemagold, uncured	-	-	-	-	-	-	-	-	-	2.81	-	-
Nemagold, cured	-	-	-	-	-	-	-	-	-	-	3.56	-
<u>New Jersey: (Semi-Weekly)</u>												
<u>South & Central New Jersey Points</u>												
<u>Delivered Sales Shipping Point Basis and</u>												
<u>Sales f.o.b. Inspection and acceptance arrival</u>												
<u>U.S. No. 1 or better, Washed, Waxed & Cured</u>												
<u>Bushel Basket</u>												
Orange Jersey type	3.29	3.45	3.45	-	-	-	-	-	-	-	-	3.74
Yellow Jersey type	3.41	-	3.48	-	-	-	-	-	-	-	-	5.04
Centennials	3.49	3.52	3.64	3.82	-	-	-	-	-	-	-	-
<u>Virginia: (Semi-Weekly)</u>												
<u>Eastern Shore Points</u>												
<u>Delivered Sales Shipping Point Basis and</u>												
<u>Sales f.o.b. Inspection and Acceptance Arrival</u>												
<u>Washed & Waxed - Bushel Basket</u>												
Nemagold, uncured	-	-	-	-	-	-	-	-	2.15	2.54	-	-
Nemagold, cured	-	-	-	-	-	-	-	-	-	-	3.50	3.54
<u>Tomatoes</u>												
<u>California:</u>												
<u>Cutler-Orosi District - Central, San Joaquin Valley</u>												
<u>Pinks - 2-Layer Flats</u>												
5x6 & 1gr.	-	-	-	-	-	5.00	3.35	-	-	-	-	-
<u>El Centro (Imperial Valley)</u>												
<u>85% or more U.S. No. 1, quality</u>												
<u>Green, Unwrapped, Loose, 40-lb. Carton</u>												
5x6	-	-	-	-	-	6.92	-	-	-	-	-	-
6x6	-	-	-	-	-	6.38	-	-	-	-	-	-
6x7	-	-	-	-	-	5.12	-	-	-	-	-	-
<u>Vine Ripe</u>												
<u>2-Layer Flats</u>												
5x6s	-	-	-	-	-	4.85	-	-	-	-	-	-
<u>Merced District - Central, San Joaquin Valley</u>												
<u>Green, 40-lb. Carton - U.S. No. 1</u>												
5x6 & 1gr.	-	-	-	-	-	-	3.93	-	-	-	-	-
5x6	-	-	-	-	-	-	3.08	-	-	-	-	-
6x7	-	-	-	-	-	-	2.57	-	-	-	-	-

Table 3.--Continued

VEGETABLES--CONTINUED

Shipping point and description of sale	Jan.	Feb.	Mar.	Apr.	May	June	July	Aug.	Sept.	Oct.	Nov.	Dec.
	Dollars Per Unit											
<u>Tomatoes--Continued</u>												
<u>California: Cont'd</u>												
<u>Gonzales-King City District, Salinas</u>												
<u>85% or more U.S. No. 1, Quality</u>												
<u>Green, Unwrapped, 40-lb. Cartons & Crates</u>												
5x6 & lgr.	-	-	-	-	-	-	-	2.66	2.80	2.74	-	-
6x6	-	-	-	-	-	-	-	2.01	2.19	2.46	-	-
6x7	-	-	-	-	-	-	-	1.62	1.82	2.37	-	-
<u>Pinks, 2-Layer Flats</u>												
5x6 & lgr.	-	-	-	-	-	-	-	2.45	1.94	1.70	-	-
<u>N. San Joaquin Valley, Stockton</u>												
<u>85% or more U.S. No. 1, quality</u>												
<u>Green, Unwrapped, Loose, 40-lb. Cartons & Crates</u>												
5x6 & lgr.	-	-	-	-	-	-	-	-	3.00	3.24	-	-
6x6	-	-	-	-	-	-	-	-	2.56	2.96	-	-
6x7	-	-	-	-	-	-	-	-	2.30	2.78	-	-
<u>Pinks, 2-Layer Flat</u>												
5x6 & lgr.	-	-	-	-	-	-	-	-	1.95	1.88	-	-
<u>Florida:</u>												
<u>Dade County Points</u>												
<u>85% or more U.S. No. 1, quality</u>												
<u>Green, Unwrapped, 40-lb. Carton</u>												
6x6 & lgr.	5.61	6.75	-	7.25	-	-	-	-	-	-	-	4.36
6x7	4.30	5.46	-	4.31	-	-	-	-	-	-	-	2.68
<u>Ft. Myers-Immokalee-Ft. Pierce Section</u>												
<u>85% or more U.S. No. 1, quality</u>												
<u>Green, Unwrapped, 40-lb. Carton</u>												
5x6	-	-	-	6.00	4.08	-	-	-	-	-	9.00	5.44
6x6	-	-	-	5.00	3.46	-	-	-	-	-	9.00	5.32
6x7	-	-	-	4.03	2.93	-	-	-	-	-	6.80	3.73
<u>Florida West Coast Section</u>												
<u>85% or more U.S. No. 1, quality</u>												
<u>Green, Unwrapped, 40-lb. Carton</u>												
5x6	-	-	-	-	4.91	-	-	-	-	-	-	-
6x6	-	-	-	-	4.05	-	-	-	-	-	-	-
6x7	-	-	-	-	3.34	-	-	-	-	-	-	-
<u>Pompano Beach Section & Nearby Points</u>												
<u>Stake Grown, Wrapped - Vine Ripe</u>												
Medium-large, without stems	1.61	1.70	1.85	1.54	-	-	-	-	-	-	-	1.32
<u>New Jersey:</u>												
<u>Auction Sales</u>												
<u>Swedesboro Area</u>												
<u>Pinks</u>												
12-qt. Climax basket, med.-lge....	-	-	-	-	-	3.76	2.62	1.86	-	-	-	-
<u>New York:</u>												
<u>Western & Central New York Points</u>												
<u>Sales f.o.b. Shipping Point and</u>												
<u>Delivered Sales Shipping Point Basis</u>												
<u>Green, Waxed, U.S. No. 1, 40-lb. Carton</u>												
6x6 & lgr.	-	-	-	-	-	-	-	-	3.13	-	-	-
<u>Ohio:</u>												
<u>Cleveland-Northern Ohio Districts</u>												
<u>Greenhouse Grown, U.S. No. 1, 8-lb. Basket</u>												
Medium	-	3.28	3.25	2.72	2.20	2.30	2.10	-	-	2.23	2.28	1.98
<u>Pennsylvania:</u>												
<u>Delivered Sales Shipping Point Basis and</u>												
<u>Sales f.o.b. Inspection and Acceptance Arrival</u>												
<u>Scranton-Berwick, Northeast Area</u>												
<u>Green, 40-lb. Carton, 80% or better U.S.No. 1, quality</u>												
6x6 & lgr.	-	-	-	-	-	-	-	2.88	-	-	-	-
<u>Vine Ripe, 10-lb. Carton</u>												
<u>80% or better, U.S. No. 1, quality</u>												
6x6 & lgr.	-	-	-	-	-	-	-	1.29	-	-	-	-

Table 3.--Continued

VEGETABLES--CONTINUED

Shipping point and description of sale	Jan.	Feb.	Mar.	Apr.	May	June	July	Aug.	Sept.	Oct.	Nov.	Dec.
	- - - Dollars Per Unit - - -											
<u>Tomatoes--Continued</u>												
<u>Texas:</u>												
<u>Lower Rio Grande Valley Points</u>												
<u>Green, Unwrapped, U.S.No. 1, 40-lb. Carton</u>												
5x6	-	-	-	-	3.50	-	-	-	-	-	-	-
6x6	-	-	-	-	3.00	-	-	-	-	-	-	-
6x7	-	-	-	-	2.65	-	-	-	-	-	-	-
<u>Mexico:</u>												
<u>West Mexico District, Nogales, Ariz. (Port of Entry)</u>												
<u>85% or more U.S. No. 1, quality</u>												
<u>Duty and Crossing Charges Extra</u>												
<u>Lugs, Green - Wrapped</u>												
6x6 & lgr.	3.29	-	-	-	-	-	-	-	-	-	-	-
6x7	2.86	-	-	-	-	-	-	-	-	-	-	-
<u>40-lb. Carton, Green, Wrapped</u>												
6x6 & lgr.	3.80	3.88	4.49	3.77	-	-	-	-	-	-	-	-
<u>Duty and Crossing Charges Paid</u>												
<u>Vine Ripe - 2-Layer Flats</u>												
5x6 & lgr.	4.05	3.14	4.52	4.52	4.07	-	-	-	-	-	-	-

Table 4.--Computed wholesale values ^{1/} per carlot of domestic fruits and vegetables, New York City and Chicago, by months, 1963 and 1964
(Values are based on stock of good merchantable quality and condition)

Year, Market and commodity	Jan.	Feb.	Mar.	Apr.	May	June	July	Aug.	Sept.	Oct.	Nov.	Dec.	Year
	- - - Dollars Per Unit - - -												
1963 - New York City													
Fruits	3575	3556	3857	3682	3077	3116	3416	2911	3022	3233	3405	3390	3284
Vegetables	2323	2269	2254	2137	2082	2180	2015	1567	1558	1662	2095	2409	2031
Fruits and Vegetables	2764	2712	2707	2552	2426	2618	2698	2211	2188	2252	2520	2757	2517
1963 - Chicago													
Fruits	3542	3602	3818	3952	3187	2828	3223	2590	3076	3300	3477	3563	3202
Vegetables	1958	1836	2052	2029	2008	2195	2174	1704	1485	1709	2052	2285	1963
Fruits and Vegetables	2387	2265	2462	2381	2308	2453	2585	2066	2036	2153	2399	2638	2344
1964 - New York City													
Fruits	3350	3398	3614	3702	3077	3831	3432	2868	3404	3576	3592	3418	3418
Vegetables	2351	2405	2469	2271	2445	2626	2372	2019	1847	2139	2579	2460	2335
Fruits and Vegetables	2705	2763	2828	2652	2657	3127	2876	2423	2498	2657	2925	2774	2745
1964 - Chicago													
Fruits	3261	3399	3661	3924	3009	3304	2868	2655	3240	3515	3337	3511	3207
Vegetables	2228	2102	2237	2210	2326	2495	2098	1833	1775	2141	2501	2653	2214
Fruits and Vegetables	2517	2486	2592	2556	2505	2802	2437	2177	2268	2522	2721	2936	2536

^{1/} The monthly carlot values in this table were computed from representative average prices including both private sales and auction transactions, and average quantities per carload of each leading fruit and vegetable. For each commodity this average monthly carlot value was weighted by domestic carload, boat and available truck unloads in obtaining a monthly average carlot value for all commodities. Estimates of farmers' market truck receipts were not available for Chicago. Estimated values for the year were obtained by weighting the monthly figures shown in the table by the monthly unloads.

Fruits include: Apples, blueberries, cantaloups, cherries, cranberries, grapefruit, grapes, honeydew melons, lemons, oranges, peaches, pears, plums and fresh prunes, strawberries and watermelons. Vegetables include: Asparagus, beets, snap beans, broccoli, cabbage, carrots, cauliflower, celery, corn, cucumbers, eggplants, escarole, lettuce, mushrooms, onions, peas, peppers, potatoes, radishes, spinach, sweetpotatoes and tomatoes.

The ratio of the volume used each month to total domestic unloads varied generally from 85 to 95 percent. Some of the minor commodities were not used in the computations. Their inclusion would make little difference in the average value per car.

Table 5.--Index of wholesale value of fresh fruits and vegetables at New York City and Chicago, by months, 1945-64 1/

Corresponding month 1957-59 = 100

Market, commodity and year	Jan.	Feb.	Mar.	Apr.	May	June	July	Aug.	Sept.	Oct.	Nov.	Dec.	Year
NEW YORK													
<u>Fruits</u>													
1945	90	89	86	86	76	68	65	80	84	92	98	105	83
1946	98	96	95	91	104	76	77	77	81	104	94	93	88
1947	79	91	87	84	83	81	67	78	79	88	85	76	80
1948	72	74	75	67	72	76	81	86	79	84	88	86	79
1949	90	95	96	97	85	84	78	70	63	84	82	81	81
1950	92	98	98	88	88	89	79	83	75	91	94	87	87
1951	87	98	88	77	71	76	78	90	85	94	90	88	84
1952	88	89	95	97	74	93	99	90	88	106	104	101	94
1953	103	106	105	101	84	89	92	92	87	99	109	97	95
1954	92	95	94	89	86	91	94	94	95	105	106	94	96
1955	93	96	89	101	94	110	101	91	78	91	98	93	95
1956	89	97	98	88	89	110	99	101	95	116	119	114	103
1957	111	108	94	96	93	111	120	107	95	102	98	96	105
1958	94	97	106	110	115	98	86	94	103	105	107	100	99
1959	95	95	100	94	92	91	95	99	103	93	95	104	96
1960	118	121	111	123	113	107	109	110	129	126	133	133	117
1961	144	136	140	128	98	99	117	124	134	118	119	148	122
1962	135	133	147	124	96	104	109	120	115	123	122	138	118
1963	155	154	162	144	102	108	134	124	111	124	132	142	128
1964	145	147	152	145	102	133	135	122	125	137	139	144	133
<u>Vegetables</u>													
1945	85	79	80	91	87	107	111	94	75	83	87	87	89
1946	79	81	88	91	81	91	81	82	60	73	84	74	82
1947	81	88	89	87	97	93	79	80	89	96	104	100	90
1948	98	99	93	103	109	98	95	82	83	79	88	83	92
1949	97	98	98	95	95	93	88	87	88	77	97	84	91
1950	80	77	74	86	84	87	78	66	67	75	86	87	79
1951	89	93	80	92	89	108	75	76	81	91	123	129	94
1952	114	103	106	124	106	113	127	109	103	100	118	118	112
1953	118	100	109	110	90	129	88	91	72	77	91	90	98
1954	87	84	80	85	93	85	92	86	82	82	163	93	87
1955	92	94	96	98	92	76	73	104	100	96	107	94	93
1956	109	94	100	95	111	137	118	92	84	98	108	102	105
1957	95	94	89	96	100	111	115	118	99	100	98	104	102
1958	109	109	118	110	106	97	92	85	80	90	97	91	98
1959	96	97	93	95	94	92	94	97	121	110	105	105	100
1960	128	124	123	131	131	117	113	114	112	114	123	113	122
1961	117	114	113	110	113	126	124	119	120	117	118	103	117
1962	121	127	137	119	133	129	125	122	118	108	115	122	124
1963	129	127	120	110	108	134	134	116	111	110	129	133	122
1964	131	135	131	117	127	162	158	149	131	142	157	136	140
<u>Fruits and Vegetables</u>													
1945	88	84	84	90	83	86	83	83	78	88	94	94	86
1946	87	88	90	90	87	80	78	78	80	92	90	83	84
1947	81	92	91	87	94	83	72	78	85	95	97	91	86
1948	88	89	87	91	96	84	85	83	81	85	91	85	87
1949	95	98	98	96	92	86	82	77	74	82	92	84	87
1950	86	86	83	87	85	86	78	75	69	85	91	88	83
1951	89	97	84	87	83	90	77	86	85	96	109	113	90
1952	104	98	103	113	95	101	111	97	94	105	113	111	104
1953	112	103	108	107	89	106	90	91	81	91	102	92	97
1954	89	89	85	86	91	90	94	94	91	98	138	93	92
1955	96	95	95	98	93	89	89	96	89	97	104	94	94
1956	102	96	99	92	104	122	107	97	89	110	115	106	104
1957	101	98	91	96	99	110	117	111	96	103	98	101	103
1958	104	105	114	110	106	97	89	91	92	95	102	94	99
1959	95	96	95	95	95	93	95	99	112	102	100	106	99
1960	125	124	119	129	125	112	111	112	120	118	127	123	120
1961	127	122	123	117	110	113	121	123	132	119	118	121	120
1962	128	130	142	122	121	116	117	123	116	115	119	130	122
1963	141	139	134	121	110	121	135	122	113	118	129	138	126
1964	138	142	140	126	120	145	144	133	129	139	149	139	137

See footnote at end of table.

Table 5.--Continued

Market, commodity and year	Jan.	Feb.	Mar.	Apr.	May	June	July	Aug.	Sept.	Oct.	Nov.	Dec.	Year
CHICAGO													
<u>Fruits</u>													
1945	76	83	80	71	71	57	57	77	72	91	100	93	74
1946	74	102	90	89	70	55	64	69	73	93	90	77	75
1947	74	93	81	75	72	65	69	71	77	76	75	67	72
1948	65	70	71	79	59	57	64	77	76	81	85	79	70
1949	90	91	95	93	86	63	63	63	65	76	74	79	73
1950	88	99	90	88	78	65	72	86	85	85	86	86	80
1951	84	96	90	76	67	58	63	85	88	86	91	92	77
1952	98	99	93	85	81	72	73	79	87	98	97	98	84
1953	99	101	107	102	83	64	73	81	93	96	109	99	87
1954	97	89	95	94	76	56	80	89	101	103	103	95	86
1955	111	96	100	97	101	104	96	104	93	95	99	99	99
1956	95	99	96	97	101	101	97	109	96	105	108	107	102
1957	112	104	105	100	97	104	114	102	93	96	93	96	102
1958	92	95	100	103	102	103	87	95	99	104	101	97	97
1959	96	101	96	98	101	93	99	103	108	100	106	107	101
1960	119	125	124	120	104	87	88	95	112	127	137	134	107
1961	134	135	133	128	92	81	94	98	108	113	119	127	106
1962	130	133	135	112	90	78	79	100	113	118	126	130	103
1963	146	149	149	138	92	78	104	101	112	120	133	136	112
1964	135	141	142	137	87	91	93	103	118	128	128	134	112
<u>Vegetables</u>													
1945	77	75	74	92	94	97	102	93	72	82	80	79	85
1946	78	79	77	85	72	77	87	75	71	66	73	66	75
1947	77	80	73	82	93	86	91	100	85	87	99	100	88
1948	107	107	92	105	109	99	88	77	99	82	80	82	94
1949	101	109	94	92	91	82	81	90	90	74	85	82	89
1950	87	82	74	86	84	81	87	84	69	72	79	87	81
1951	85	93	82	88	91	98	89	86	93	89	116	120	94
1952	117	108	106	107	110	118	127	119	103	107	111	106	111
1953	105	102	90	89	89	99	92	91	85	77	86	76	91
1954	83	77	83	90	90	96	100	82	76	90	90	81	87
1955	88	88	86	104	96	87	76	79	91	84	81	87	88
1956	97	101	103	104	103	126	135	105	84	93	98	96	105
1957	94	95	89	97	99	106	113	115	100	100	103	116	102
1958	112	112	120	112	108	91	94	82	84	89	93	87	98
1959	94	93	91	91	93	104	93	103	116	111	104	97	99
1960	135	119	119	127	115	115	129	129	123	117	114	114	122
1961	114	111	110	113	111	116	114	111	109	113	112	107	113
1962	123	135	143	133	134	125	121	114	118	118	114	119	126
1963	117	110	111	107	102	122	136	125	108	115	121	127	117
1964	133	126	121	116	118	138	131	134	129	144	147	147	132
<u>Fruits and Vegetables</u>													
1945	79	81	78	87	87	76	77	84	74	92	91	85	82
1946	87	94	81	88	71	66	75	72	75	81	79	69	76
1947	78	86	78	81	88	73	78	85	84	85	91	88	82
1948	92	94	86	98	91	77	75	76	89	84	83	82	84
1949	99	103	94	92	89	73	73	75	76	73	82	81	82
1950	89	89	79	87	82	73	78	81	76	80	80	84	81
1951	84	95	85	84	83	77	75	85	91	88	108	109	87
1952	111	104	102	100	101	94	97	96	96	104	107	103	100
1953	103	102	93	94	88	81	83	88	90	86	96	85	90
1954	88	81	88	92	87	76	91	88	89	103	96	86	88
1955	93	92	92	101	100	95	87	97	93	93	89	92	94
1956	97	102	101	103	105	116	115	108	92	100	103	99	105
1957	99	97	93	98	100	104	114	107	96	100	100	109	102
1958	105	106	114	109	103	96	90	90	92	96	96	90	98
1959	95	96	94	94	97	100	96	103	112	104	104	101	100
1960	130	121	121	125	109	98	106	110	117	118	120	121	115
1961	119	118	117	118	106	99	102	105	109	112	115	113	110
1962	125	134	141	127	120	101	98	106	116	116	120	125	117
1963	128	121	121	112	100	100	117	110	110	116	125	130	114
1964	135	133	127	121	108	114	110	116	122	136	141	145	124

1/ THE INDEX OF WHOLESALE VALUES presented in this table were computed from prices representing private and auction sales, weighted according to the unloads of each fruit and vegetable for that month. Index numbers for the year were obtained by weighting the monthly data by the unloads for the respective months.

The following fruits and vegetables are included: Apples, blueberries, cantaloups, cherries, cranberries, grapefruit, grapes, honeydew melons, lemons, oranges, peaches, pears, plums and prunes, strawberries, watermelons, asparagus, snap beans, beets, broccoli, cabbage, carrots, cauliflower, celery, yellow corn, cucumbers, eggplants escarole, lettuce, mushrooms, onions, peas, peppers, potatoes, radishes, spinach, sweetpotatoes and tomatoes.

U. S. DEPARTMENT OF AGRICULTURE
Consumer and Marketing Service
Washington, D. C. 20250

Postage and Fees Paid
U. S. Department of Agriculture

Official Business

Earlier editions of this publication were issued by the Agricultural Marketing Service. The name of the agency was changed to Consumer and Marketing Service, effective February 8, 1965.

END