



AgEcon SEARCH
RESEARCH IN AGRICULTURAL & APPLIED ECONOMICS

The World's Largest Open Access Agricultural & Applied Economics Digital Library

This document is discoverable and free to researchers across the globe due to the work of AgEcon Search.

Help ensure our sustainability.

Give to AgEcon Search

AgEcon Search

<http://ageconsearch.umn.edu>

aesearch@umn.edu

*Papers downloaded from **AgEcon Search** may be used for non-commercial purposes and personal study only. No other use, including posting to another Internet site, is permitted without permission from the copyright owner (not AgEcon Search), or as allowed under the provisions of Fair Use, U.S. Copyright Act, Title 17 U.S.C.*

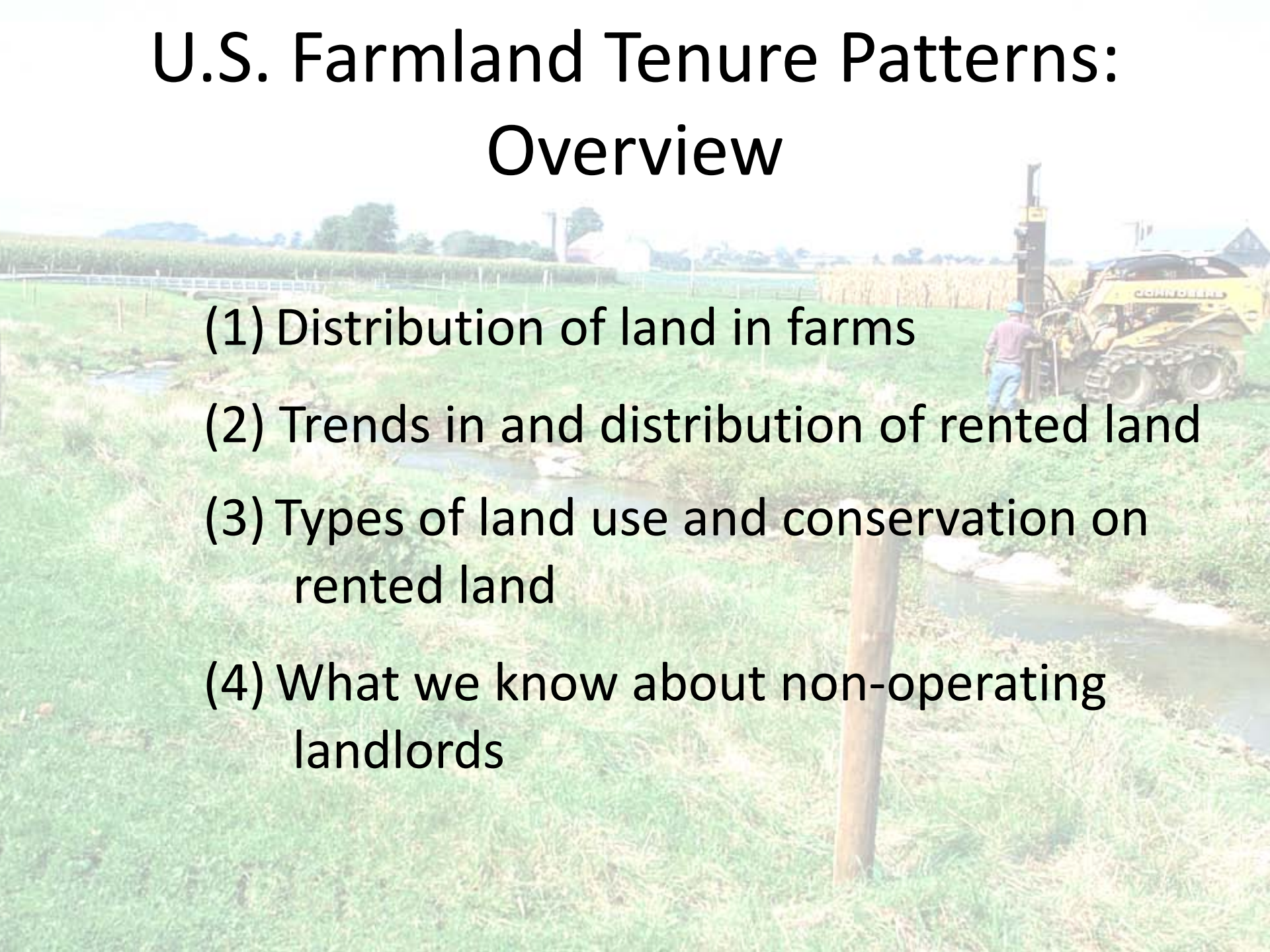
U.S. Farmland Tenure Patterns: Overview

**Cindy Nickerson and Allison Borchers
USDA – Economic Research Service**

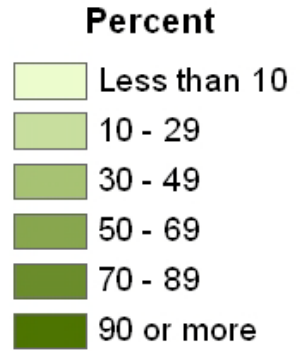
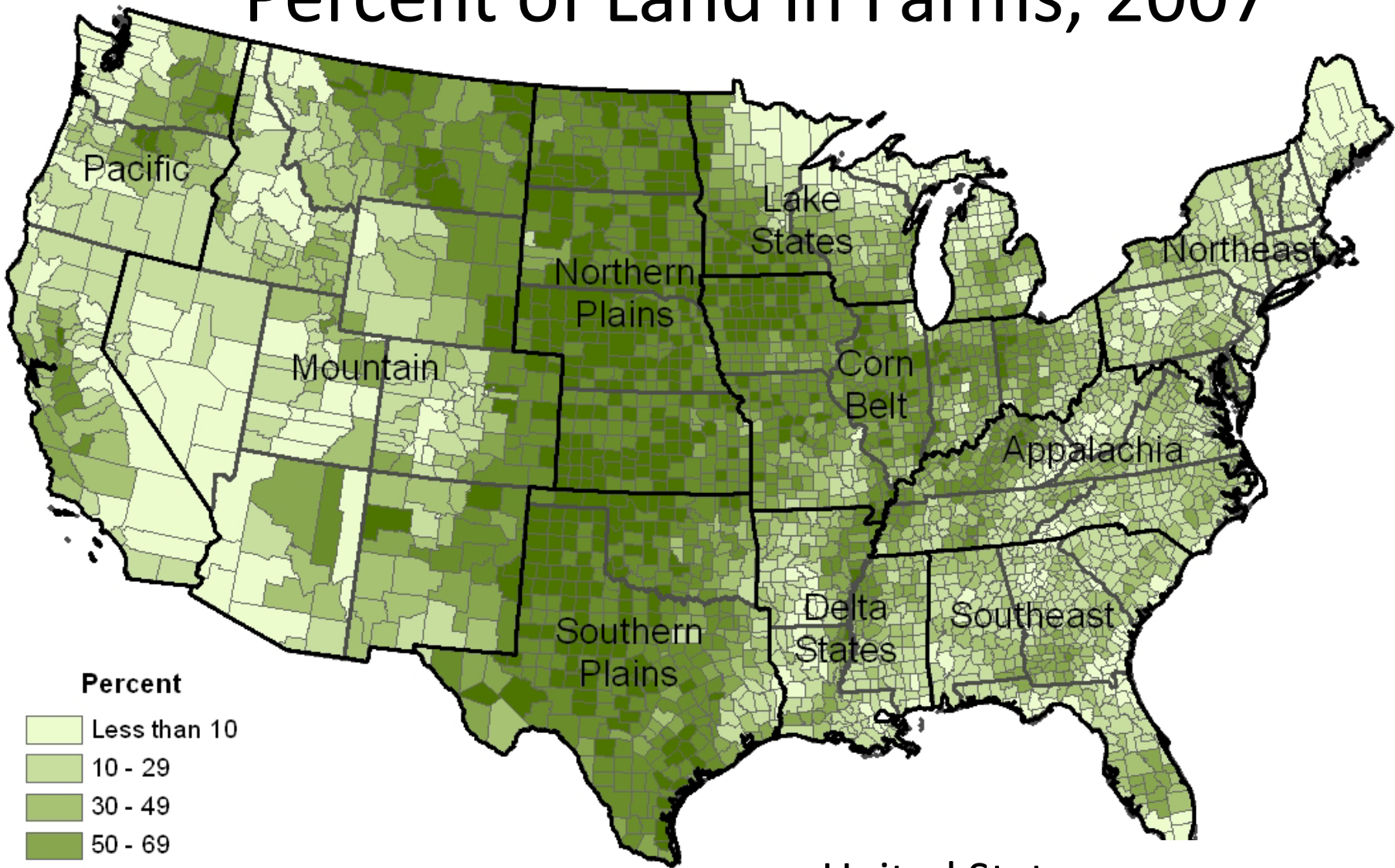
**USDA Ag Outlook Forum
February 24, 2011**



U.S. Farmland Tenure Patterns: Overview

- 
- (1) Distribution of land in farms
 - (2) Trends in and distribution of rented land
 - (3) Types of land use and conservation on rented land
 - (4) What we know about non-operating landlords

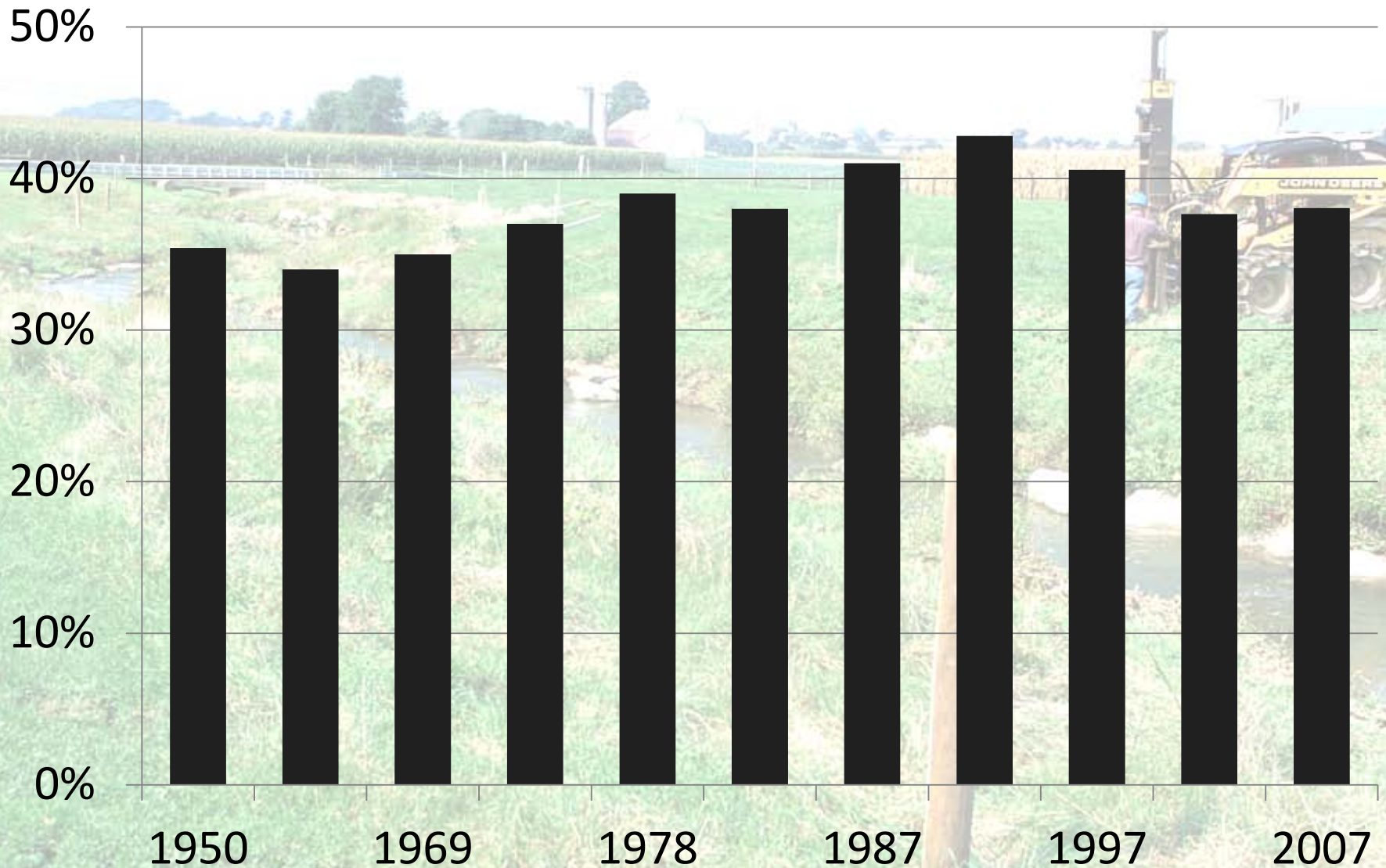
Percent of Land in Farms, 2007



2007 Census of Agriculture, USDA-NASS

United States
922.1 million acres in farms
40.2 % of all land

Share of Acres Rented



Source: Censuses of Agriculture

Counties with >50% leased land, 1950

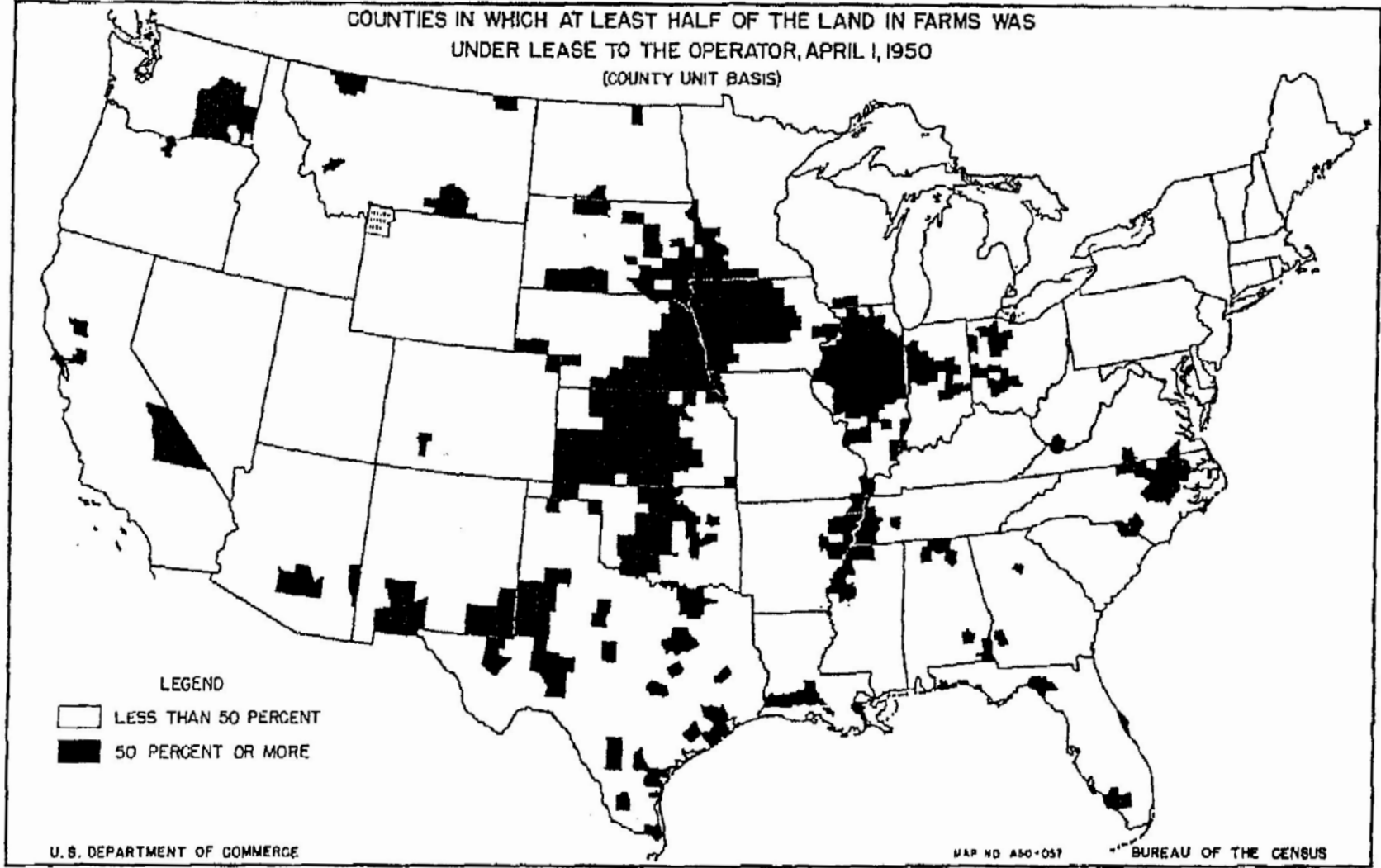
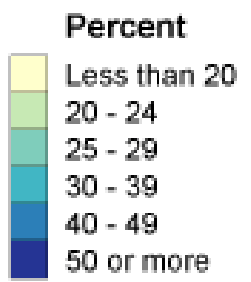
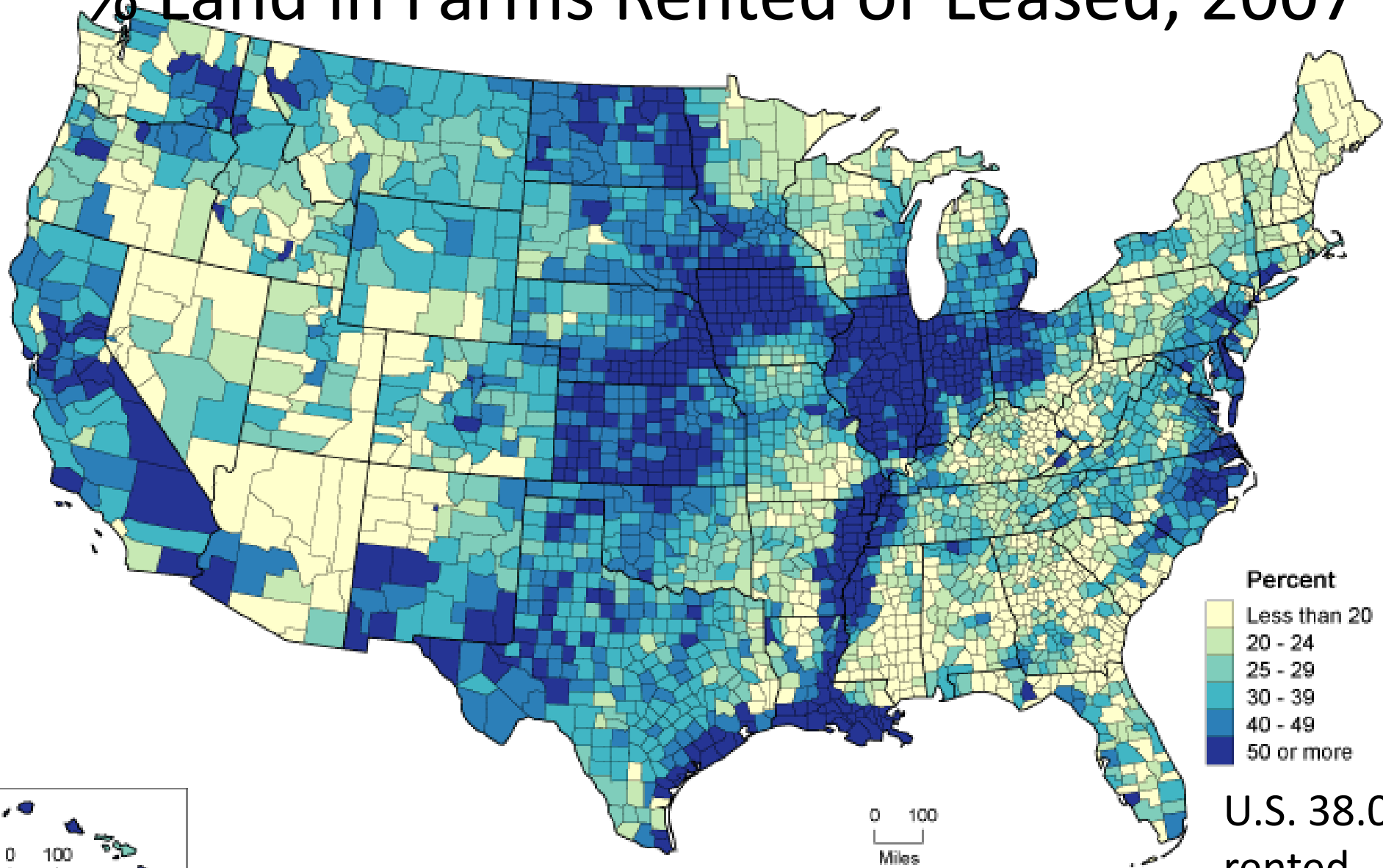


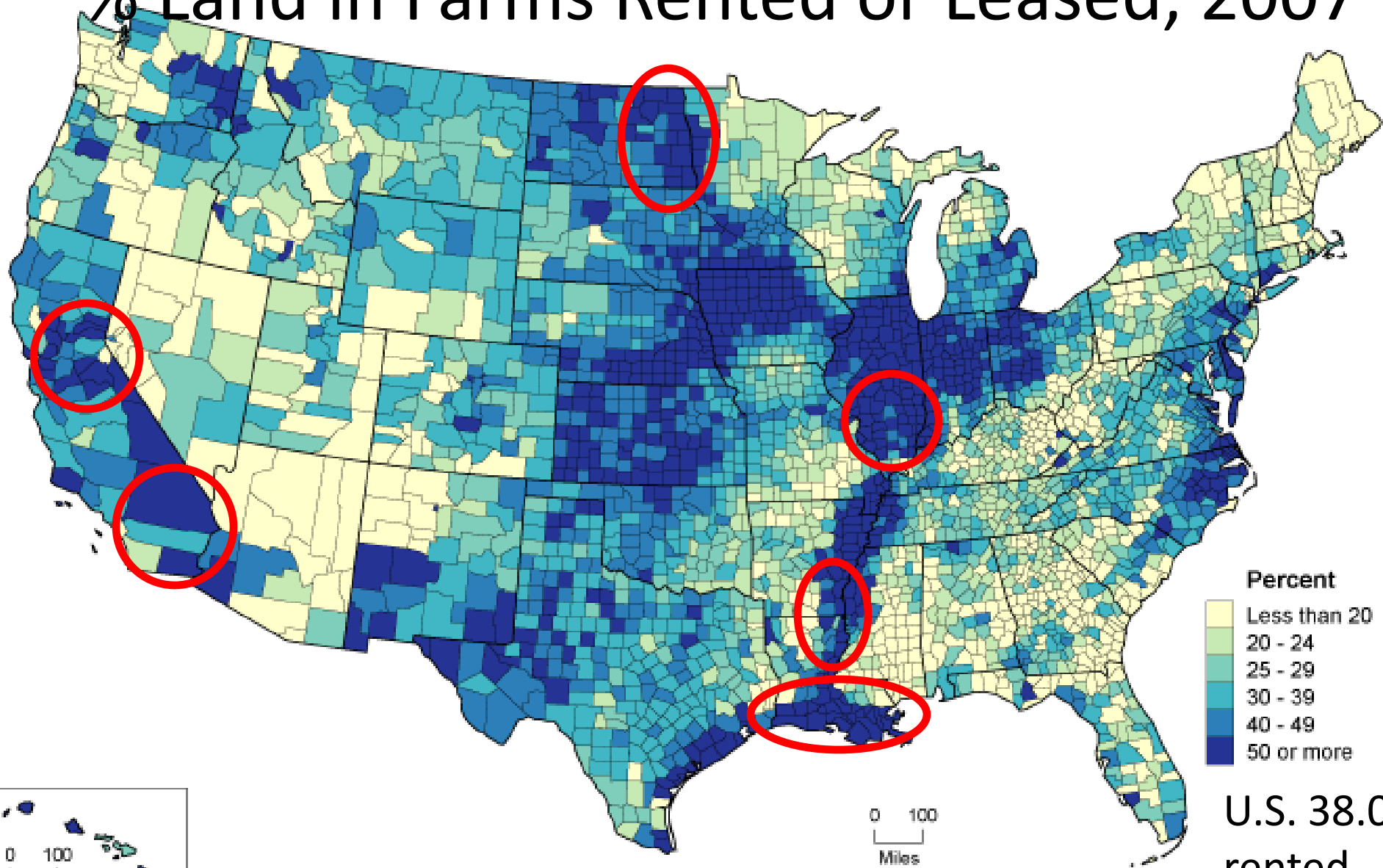
Figure 13

% Land in Farms Rented or Leased, 2007

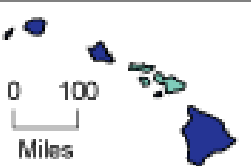


U.S. 38.0%
rented

% Land in Farms Rented or Leased, 2007

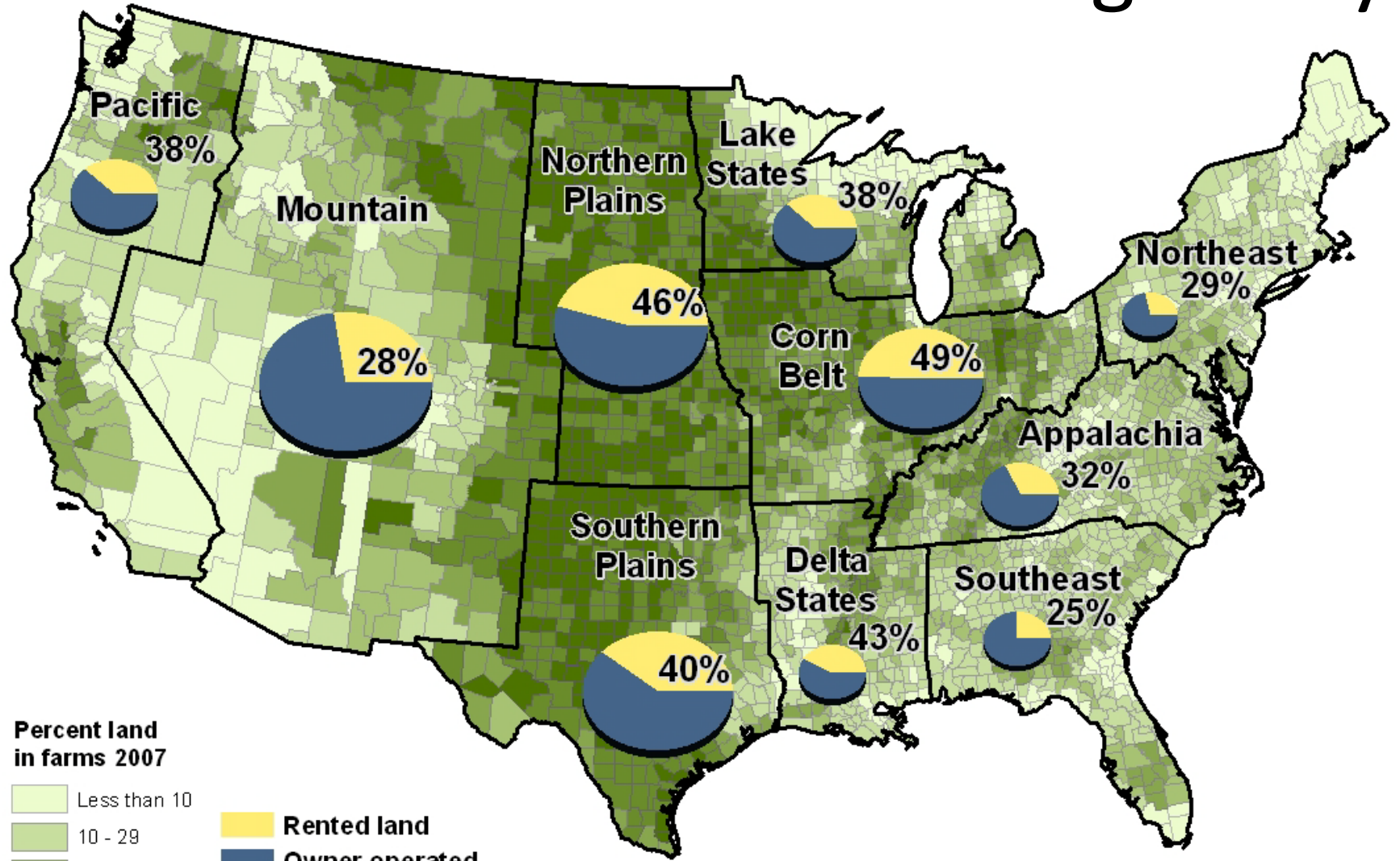


U.S. 38.0%
rented



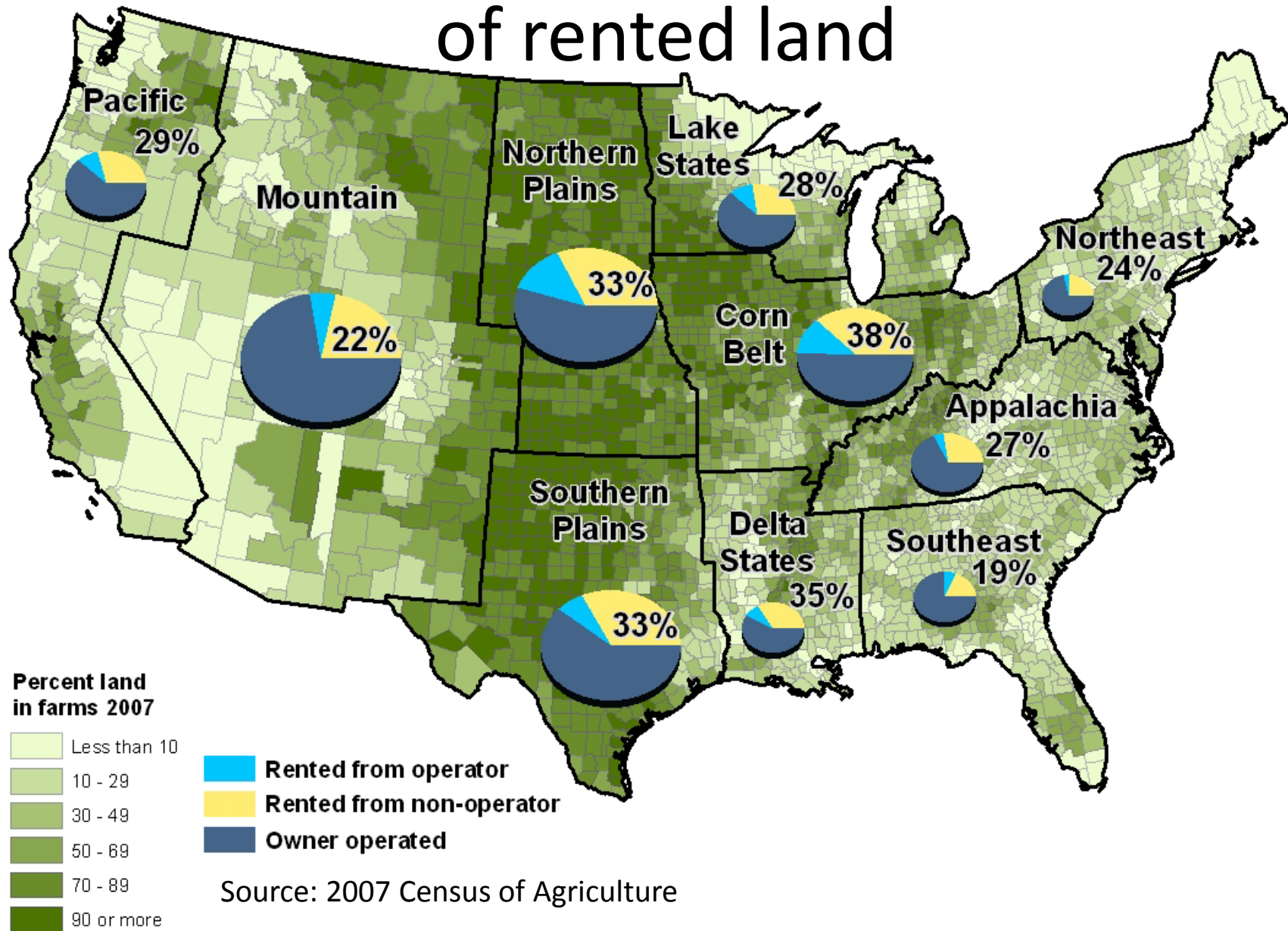
% of rented land varies regionally

(2)

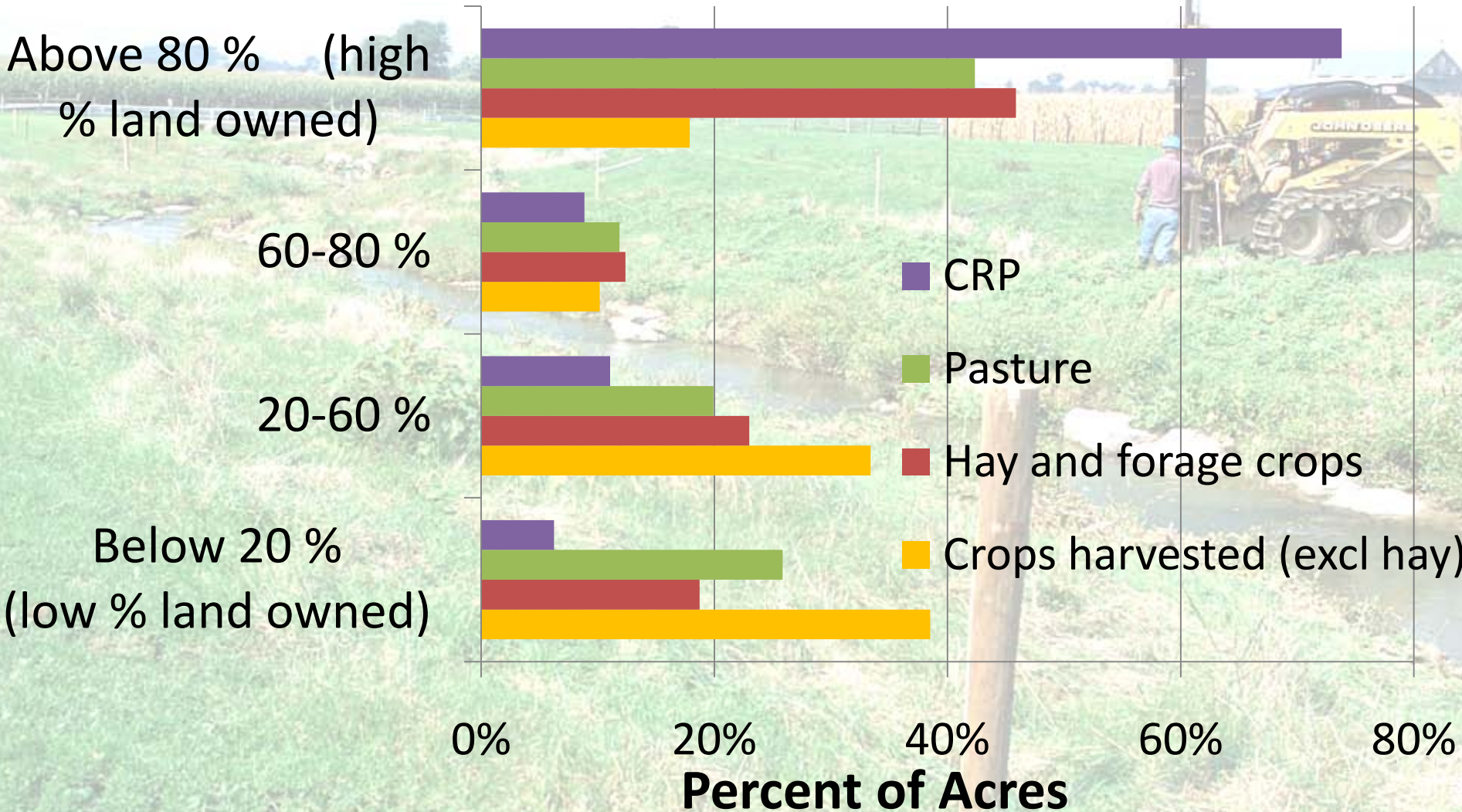


Source: 2007 Census of Agriculture

Non-Operators own significant % of rented land



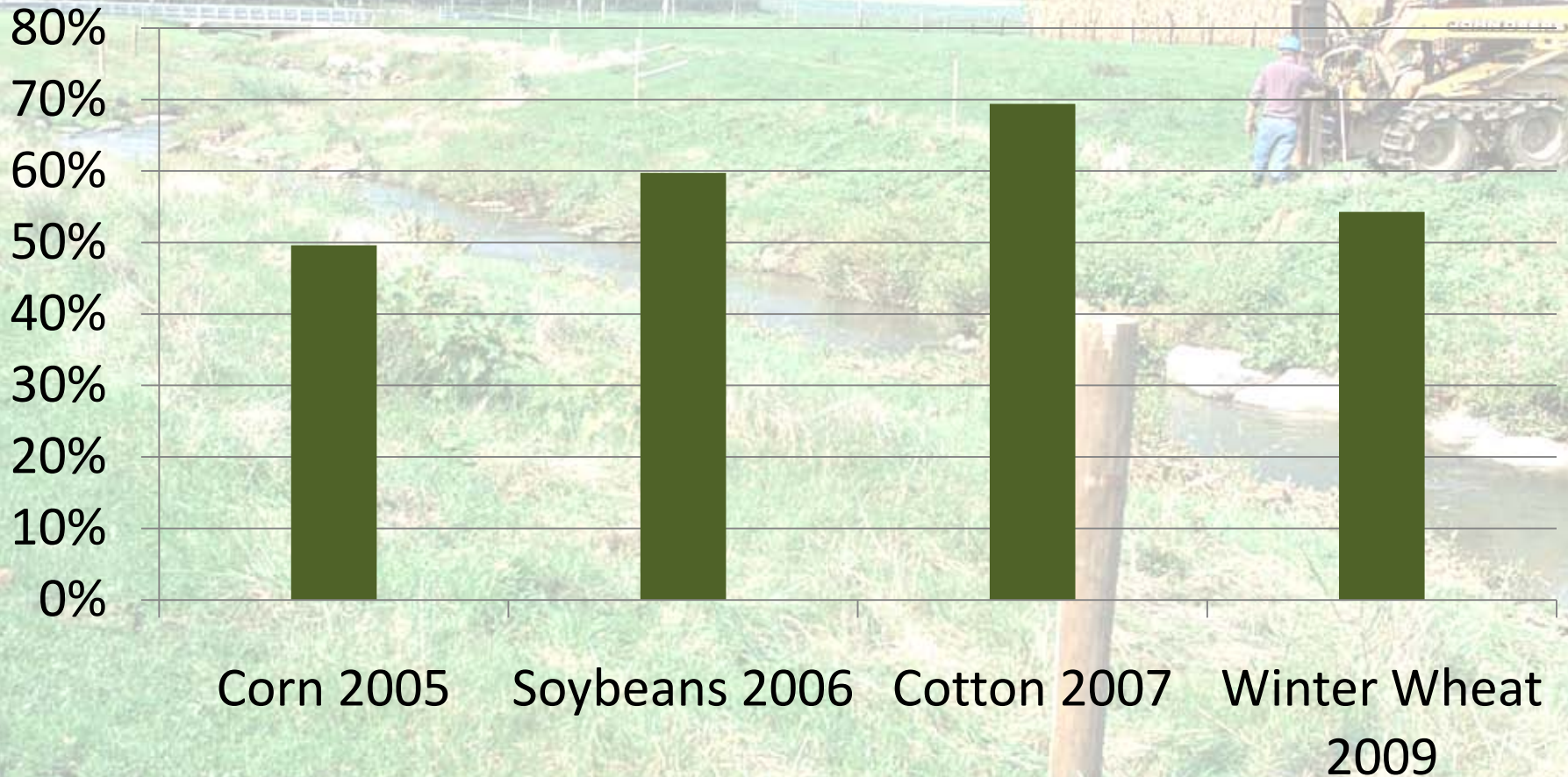
Land Use by Ownership Class, 2007



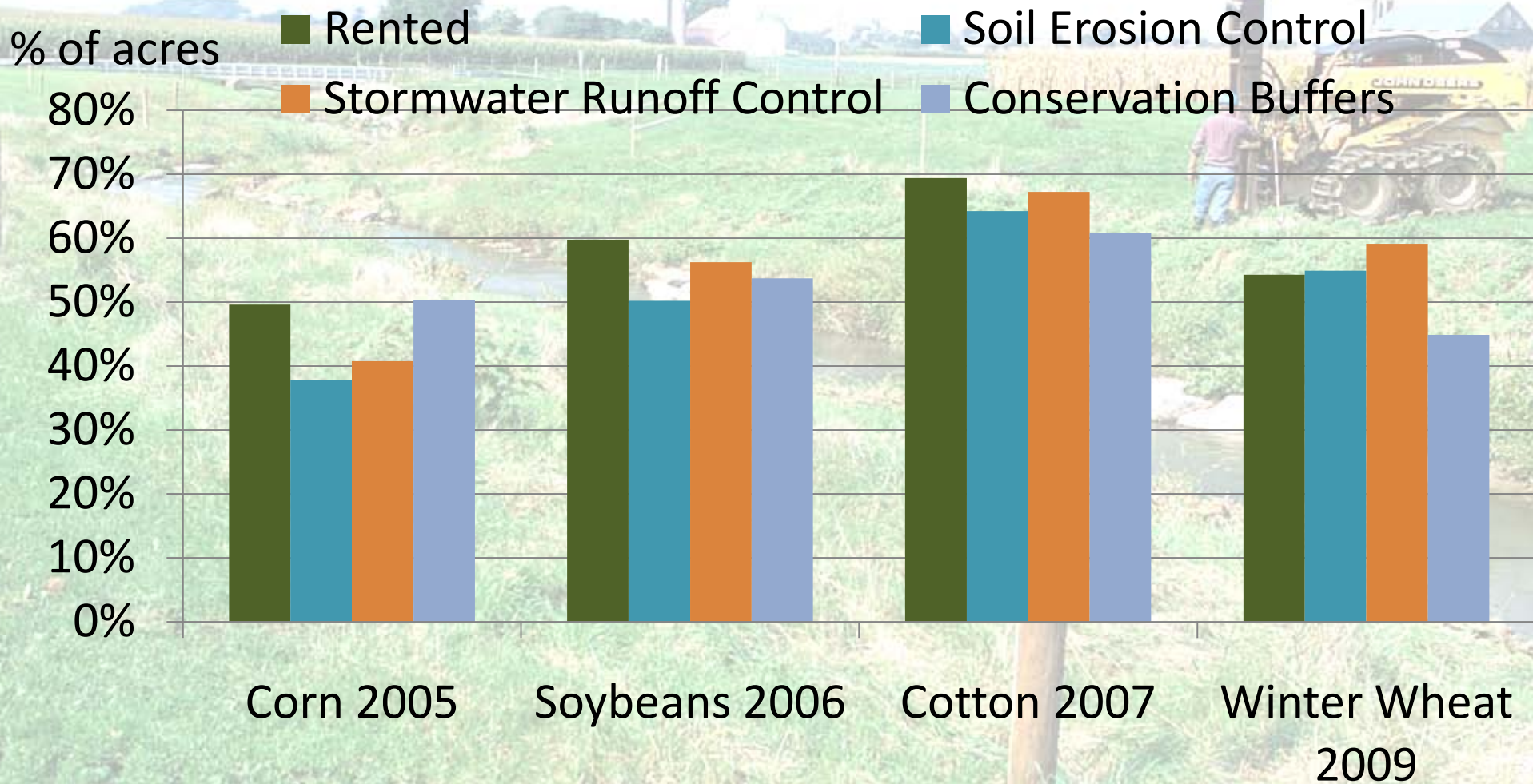
Source: ERS Tabulations based on USDA-NASS/ERS 2007 ARMS

Share of Acres Rented by Crop

% of acres



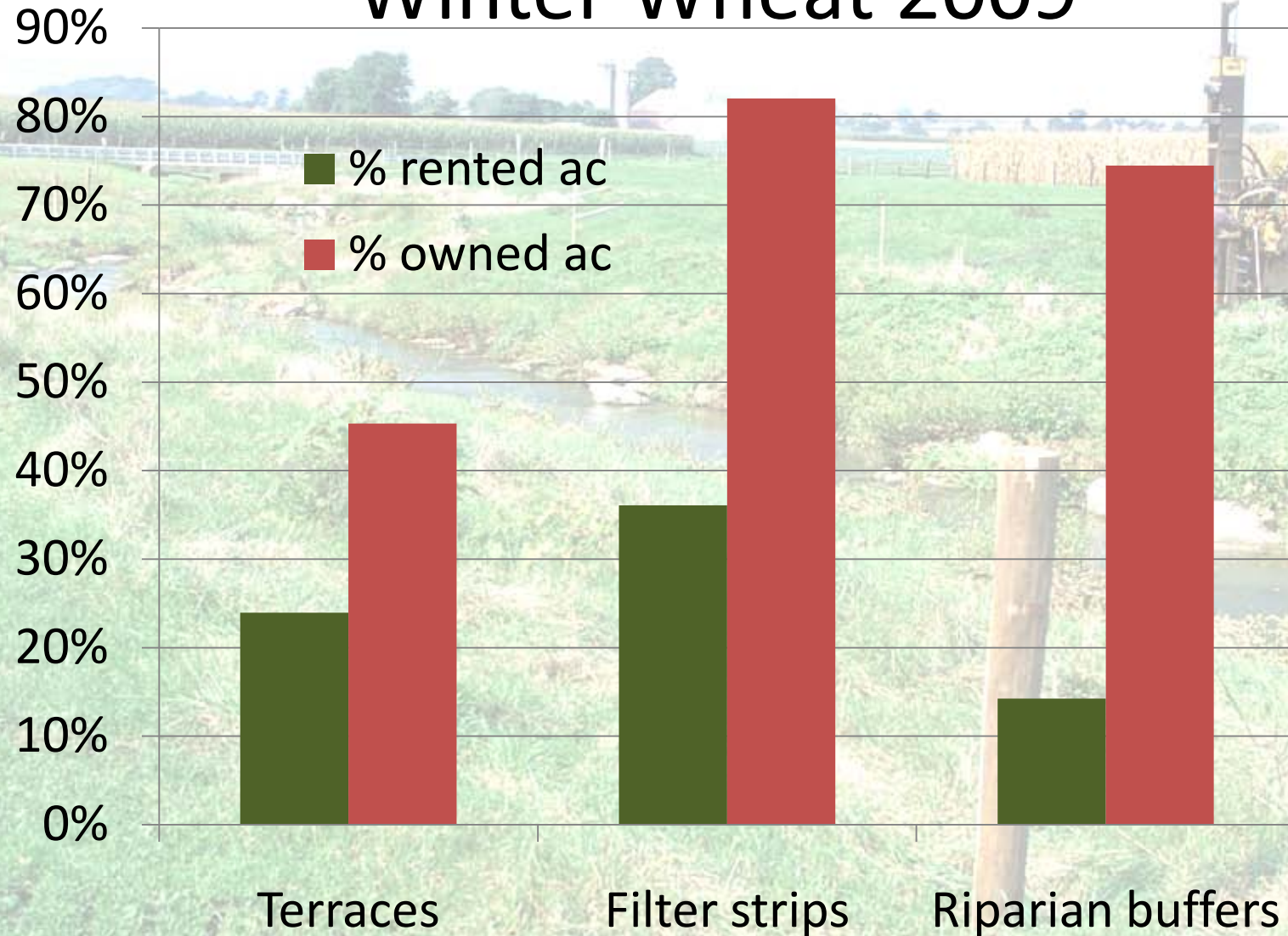
Conservation practices on rented land



Source: ERS Tabulations based on USDA-NASS/ERS ARMS Phase 2

Acres receiving cost share by tenure status

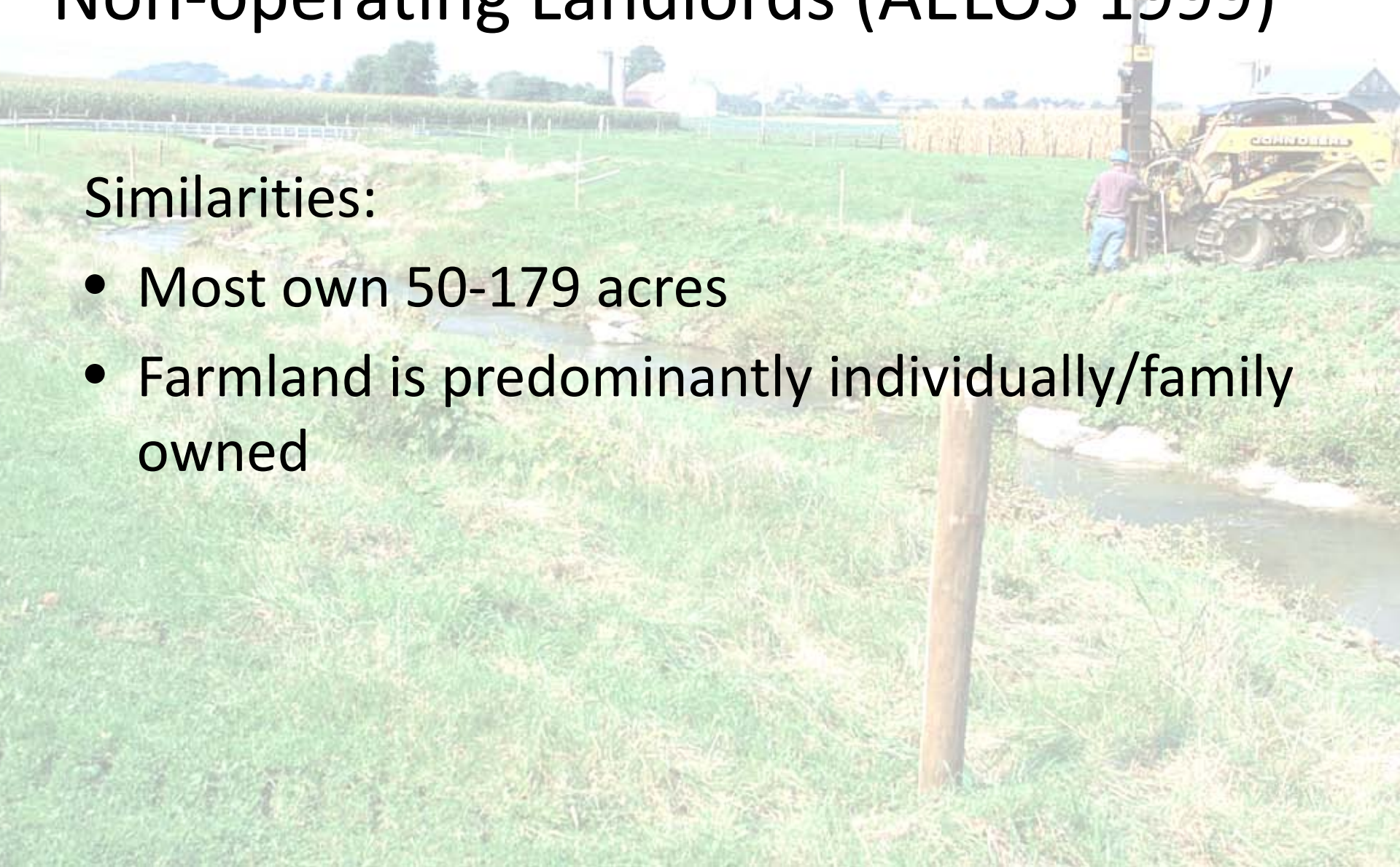
Winter Wheat 2009



Characteristics of Owner-operators and Non-operating Landlords (AELOS 1999)

Similarities:

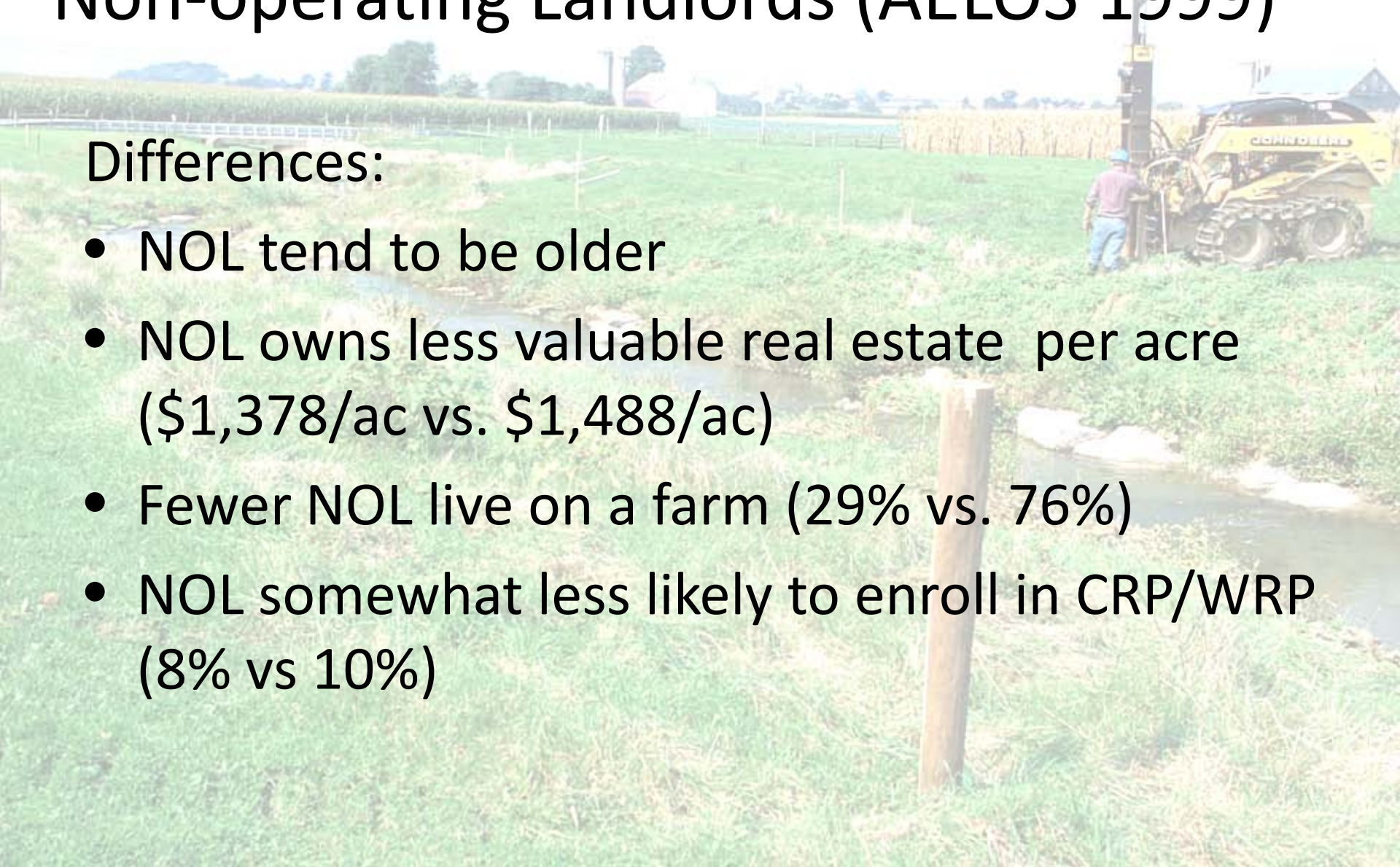
- Most own 50-179 acres
- Farmland is predominantly individually/family owned



Characteristics of Owner-operators and Non-operating Landlords (AELOS 1999)

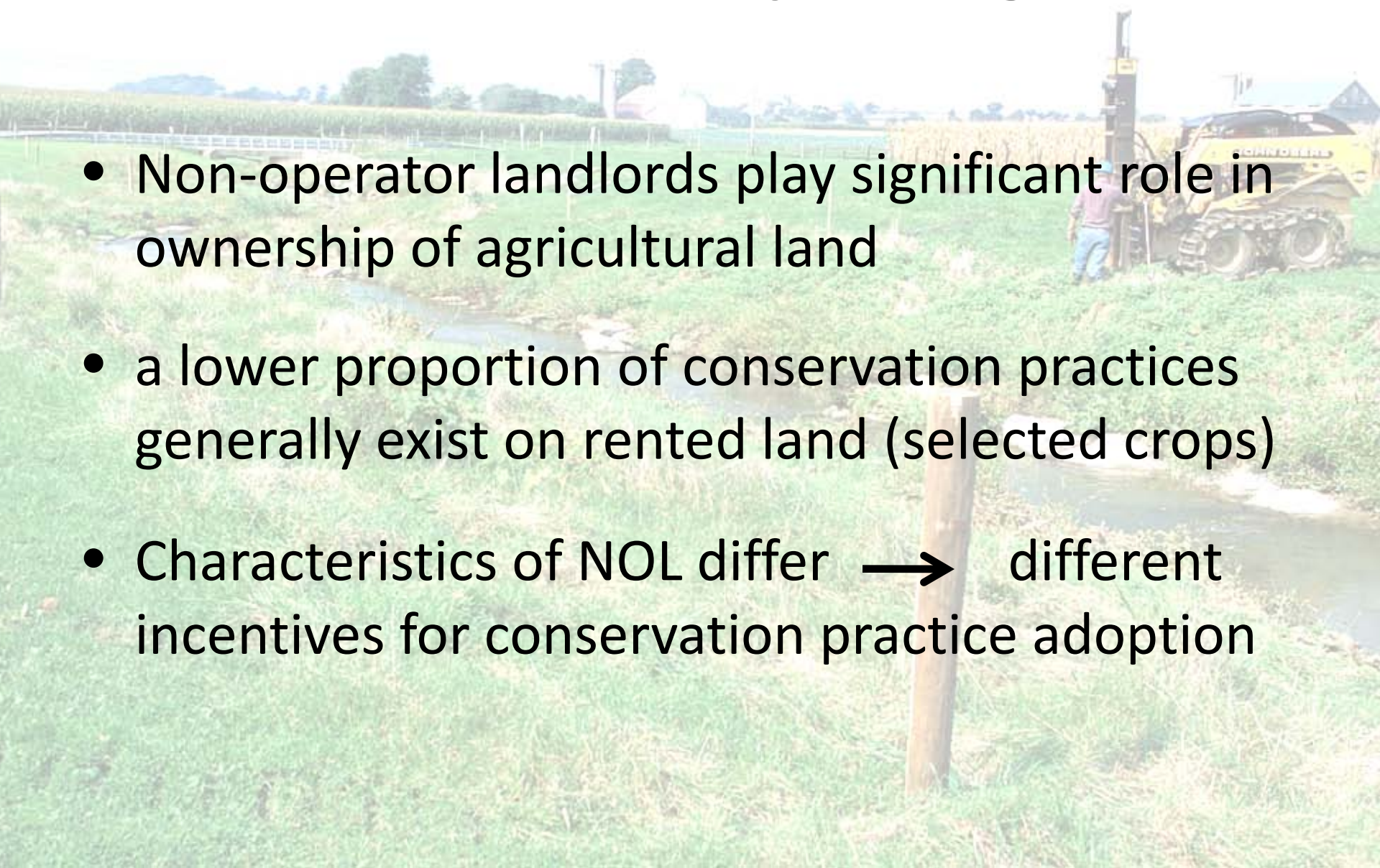
Differences:

- NOL tend to be older
- NOL owns less valuable real estate per acre (\$1,378/ac vs. \$1,488/ac)
- Fewer NOL live on a farm (29% vs. 76%)
- NOL somewhat less likely to enroll in CRP/WRP (8% vs 10%)



Observations on Non-Operating Landlords

- Non-operator landlords play significant role in ownership of agricultural land
- a lower proportion of conservation practices generally exist on rented land (selected crops)
- Characteristics of NOL differ → different incentives for conservation practice adoption



U.S. Farmland Tenure Patterns: Overview

Thank you for listening!

**Cindy Nickerson
cnickerson@ers.usda.gov**

USDA – Economic Research Service

